



DE VALK  
YACHT BROKERS



X-YACHTS XC 42



DE VALK  
YACHT BROKERS

BROKERAGE | CHARTER | BERTHS | FINANCE | INSURANCE | YACHT MANAGEMENT

# X-YACHTS XC 42

## BROKER'S COMMENTS

Speed or comfort? You can have both! Look at this beautiful, punctually maintained XC-42. Only 1 owner from new, full history known. Benefits: low engine hours, water maker, generator, recent solar panels on new arch, teak deck still in superb condition, winter tent over cockpit, many sunshades. Sails in good cruising condition. Inside she offers the warm woody outfit, plus important an overall clean and spotless interior. The comfy air-conditioning makes life very pleasant for owner, family and guests. She comes with new antifouling and sail drive seal, so she is ready for the new season.

*Willem Koopmans*

## SPECIFICATIONS

<b>Dimensions</b>	12.81 x 4.10 x 2.10 (m)	<b>Builder</b>	X-Yachts
<b>Built</b>	2012	<b>Cabins</b>	3
<b>Material</b>	GRP	<b>Berths</b>	6
<b>Engine(s)</b>	1 x Volvo Penta D2-55 diesel	<b>Hp/Kw</b>	55.00 (hp), 40.48 (kw)
<b>Asking price</b>	€ 395.000 (VAT Paid)	<b>Lying</b>	contact sales office

## CONTACT

<b>Sales office</b>	De Valk Costa Blanca	<b>Telephone</b>	+34965021569
<b>Address</b>	Costa Blanca Region 03730 Javea Alicante Spain	<b>E-mail</b>	costablanca@devalk.nl

## DISCLAIMER

These particulars are given in good faith as supplied but cannot be guaranteed.



# X-YACHTS XC 42

## GENERAL

Model	X-YACHTS XC 42
Type	sailing yacht
LOA (m)	12,81
LWL (m)	11,47
Beam (m)	4,10
Draft (m)	2,10
Air draft (m)	21,00
Headroom (m)	2,00
Year built	2012
Launched	2012 to present owners
Builder	X-Yachts
Country	Denmark
Designer	Niels Jeppesen
Displacement (t)	11,4
Ballast (tonnes)	cast iron 4,98
CE norm	A
Hull material	GRP
Hull colour	off-white
Hull shape	round-bilged
Keel type	fin keel with bulb
Superstructure material	GRP
Deck material	GRP
Deck finish	teak
Superstructure deck finish	teak
Cockpit deck finish	teak
Antifouling (year)	Sigma eco fleet 530, to be done in March 2025
Dorades	2
Window frame	aluminium
Window material	polycarbonate
Deckhatch	Flush mounted



# X-YACHTS XC 42

Portholes	aluminium
Fuel tank (litre)	stainless steel 250
Level indicator (fuel tank)	yes
Freshwater tank (litre)	stainless steel 2x 250
Level indicator (freshwater)	yes
Blackwater tank (litre)	2x 60
Blackwater tank extraction	deck extraction + uw line
Wheel steering	cable steering 2x Jefa
Emergency tiller	yes
More info on hull	Epoxy protected
Extra info	From first owners and in superb condition

## ACCOMMODATION

Cabins	3
Berths	6
Interior	teak
Layout	Owner front, 2 aft cabins
Floor	teak and holly
Headroom saloon (m)	2
Air-conditioning	reverse cycle airco 12000 BTU in owner and main cabin
Navigation center	yes
Chart table	yes
Aft Cabin	Double
Dinette	yes
Convertible berth	In salon with sling sail
Galley	yes
Countertop	corian
Sink	stainless steel Double
Cooker	calor gas ENO 3 burner gimballed
Oven	ENO
Gas alarm	CO monitors mounted in cabins



# X-YACHTS XC 42

Microwave	yes
Microwave/oven combi	Front fitted
Fridge	Isotherm front loader 85 ltr
Freezer	Magnum top loader fridge/freezer
Hot water system	220V + engine 25 ltr boiler
Water pressure system	electrical With drink water filter system
Owners cabin	double bed
Bed length (m)	2.2 x 2.1 (1.6 half way)
Wardrobe	hanging/drawers/shelves
Bathroom	en suite
Toilet	en suite
Toilet system	electric Jabsco, new installed 2024
Wash basin	in the bathroom
Shower	en suite
Guest cabin 1	double bed
Bed length (m)	2.2 x 1.4
Wardrobe	hanging and shelves
Bathroom	shared
Toilet	shared
Toilet system	manual Jabsco, new installed 2024
Wash basin	in the bathroom
Shower	shared
Guest cabin 2	yes
Bed length (m)	2.2 x 1.4
Wardrobe	hanging and shelves
Bathroom	shared
Toilet	shared
Toilet system	manual Jabsco, new installed 2024
Wash basin	in the bathroom
Shower	shared
Extra info	Beam doors 45 cm and 42 cm
Extra info	Led lights



Washing machine

Installation is prepared

## MACHINERY

No of engines	1
Make	Volvo Penta
Type	D2-55
HP	55
kW	40.48
Fuel	diesel
Year installed	2012
Maximum speed (kn)	9
Cruising speed (kn)	7
Consumption (l/hr)	3,5
Engine hours	1460
Engine cooling system	freshwater heat exchanger
Drive	sail-drive
Saildrive seal	To be replaced in March 2025
Engine controls	bowden cable
Gearbox	mechanical
Bowthruster	electric Max power retractable
Exhaust	watercooled
Propeller type	folding Bronze
Propeller blades	3
Manual bilge pump	yes
Electric bilge pump	yes
Electrical installation	12/228
Generator	Fischer Panda 4 kW
Running hours generator	468
Batteries	yes
Start battery	AGM 130Ah, new 2024
Service battery	3x AGM 130 Ah, new 2023



Generator battery	yes
Battery monitor	Victron
Battery charger	Mastervolt 12/50/3
Solar panel	3x 115 Watt, new 2024 plus 100 Watt on stainless steel arch
Shorepower	yes
Insulation transformer	Galvanic Isolator 30 Amp
Watermaker	Dessalator 60 ltr

## NAVIGATION

Compass	yes
Electric compass	On pilot
Multi control display	2x Raymarine I70
Depth sounder	yes
Log	yes
Windset	Raymarine I60
VHF	Raymarine 240E
VHF handheld	yes
Autopilot	Linear drive SPX 30 computer
Rudder angle indicator	On pilot
Radar	Raymarine Digital
GPS	yes
Radar/GPS/plotter	Raymarine E90W and 12 inch hybrid touch inside
AIS transponder	Raymarine AIS 650
EPIRB	McMurdo, battery expires in 2029
Navigation lights	yes

## EQUIPMENT

Fixed windscreen	Curved aluminium with toughened glass and sun cover
Sprayhood	New 2023
Cockpit cover	Full (winter) tent or canopy
Bimini	yes



# X-YACHTS XC 42

Sun awning	Side lobs on bimini
Winter cover	See cockpit cover
Cockpit cushions	yes
Cockpit table	With cover and helm covers
Bathing platform	With steps remote electric operated
Boarding ladder	stainless steel
Transom door	yes
Gangway	Carbon fibre, foldable 2,20 m
Deck shower	yes
Anchor	Delta 20 kg
Anchor chain	70 mtr 10 mm
Chain counter	Quick CH1203
Windlass	Quick 1500 Watt
Dinghy	GTI 2.4
Outboard	Tohatsu 4 hp
Outboard support	Mounted on aft pushpit
Davits	Removable
Life raft	valise (or bag) Ocean Safe
Life raft (pers)	6
Last life raft survey	2025 service will be done
Lifejackets	4
Danbuoy	yes
Fenders	yes
Mooring lines	yes
Spare parts	yes
TV	Panasonic 32 inch
Radio-cd player	JVC multimedia
DVD player	yes
Cockpit speakers	Bose
Speakers in salon	JVC
Clock - barometer	yes
Fire extinguisher	4x, to be checked in 2025





## Extra info

Personal safe on board

## RIGGING

Rigging

sloop

Standing rigging

Rod

Brand mast

John mast

Material mast

aluminium

Spreaders

2

Keel stepped mast

yes

Mainsail cover

Lazy back and jack 2023 with integrated sun covers

Battcars

5x Ronstan

Fully battened mainsail

5 full battened Dyneema sandwich Triradial

Genoa

108% triradial cut Dyneema sandwich SRP75 with UV strip

Gennaker

G2 gradient nylon 150 and snuffer

Removable innerforestay

yes

Stormjib

Manual hanks Sanders UK, never used

Reefing System

slabreefing

Backstay adjuster

hydraulic

Boomvang

gasspring Selden

Primary sheet winch

2x Andersen 46ST

Genoa sheetwinches

electric 2x Andersen 58STE

Halyard winches

electric 1x Andersen 46STE

Reefing winch

1x Andersen 46ST



## X-YACHTS XC 42



# X-YACHTS XC 42



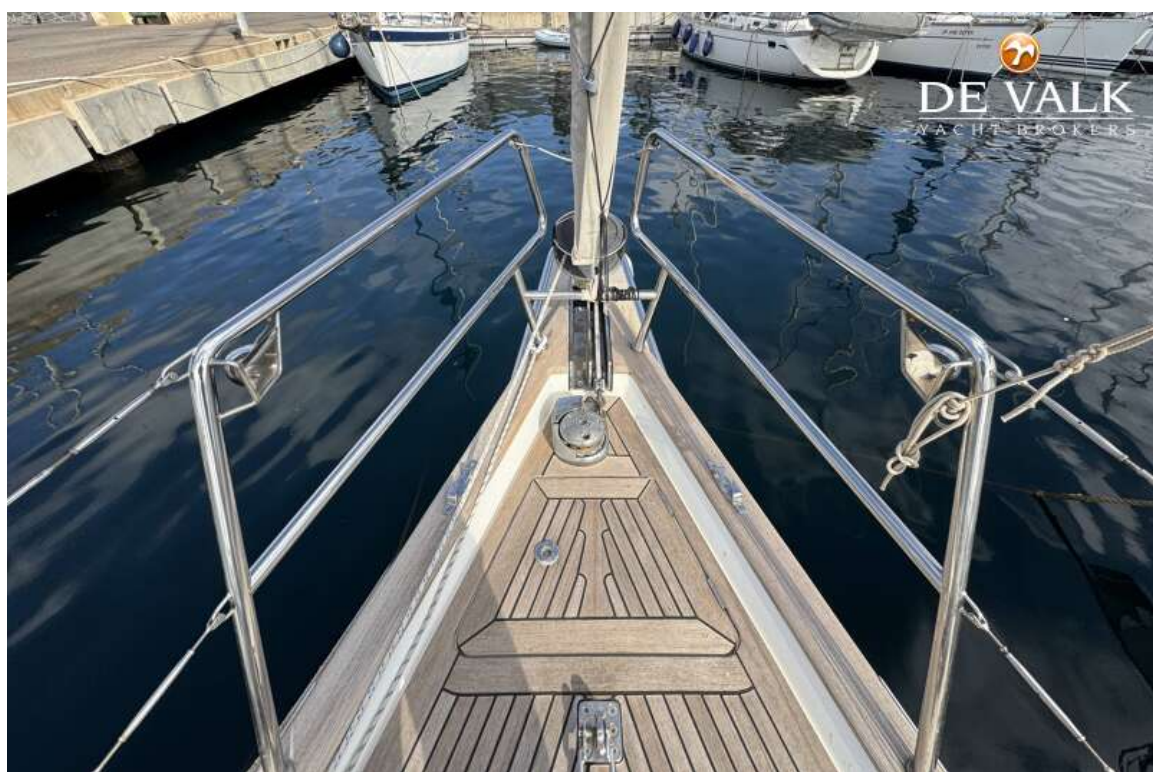


## X-YACHTS XC 42





## X-YACHTS XC 42





## X-YACHTS XC 42





## X-YACHTS XC 42



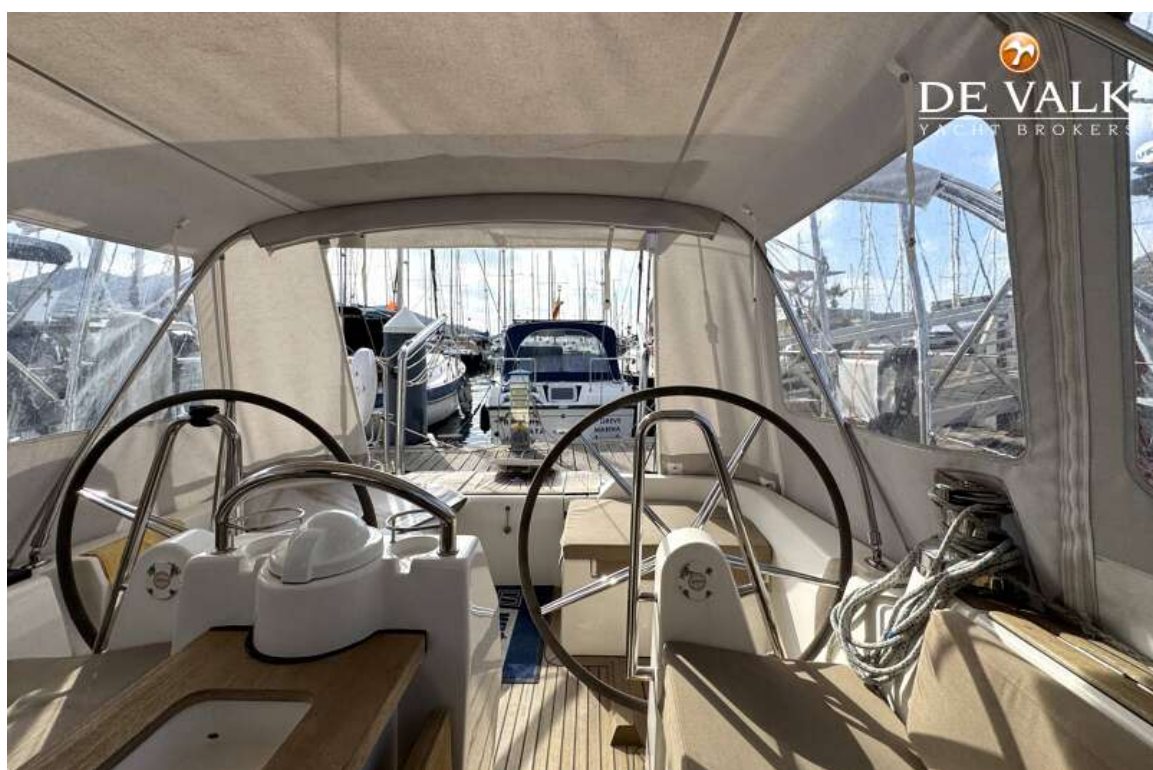


# X-YACHTS XC 42





## X-YACHTS XC 42





## X-YACHTS XC 42



## X-YACHTS XC 42





## X-YACHTS XC 42

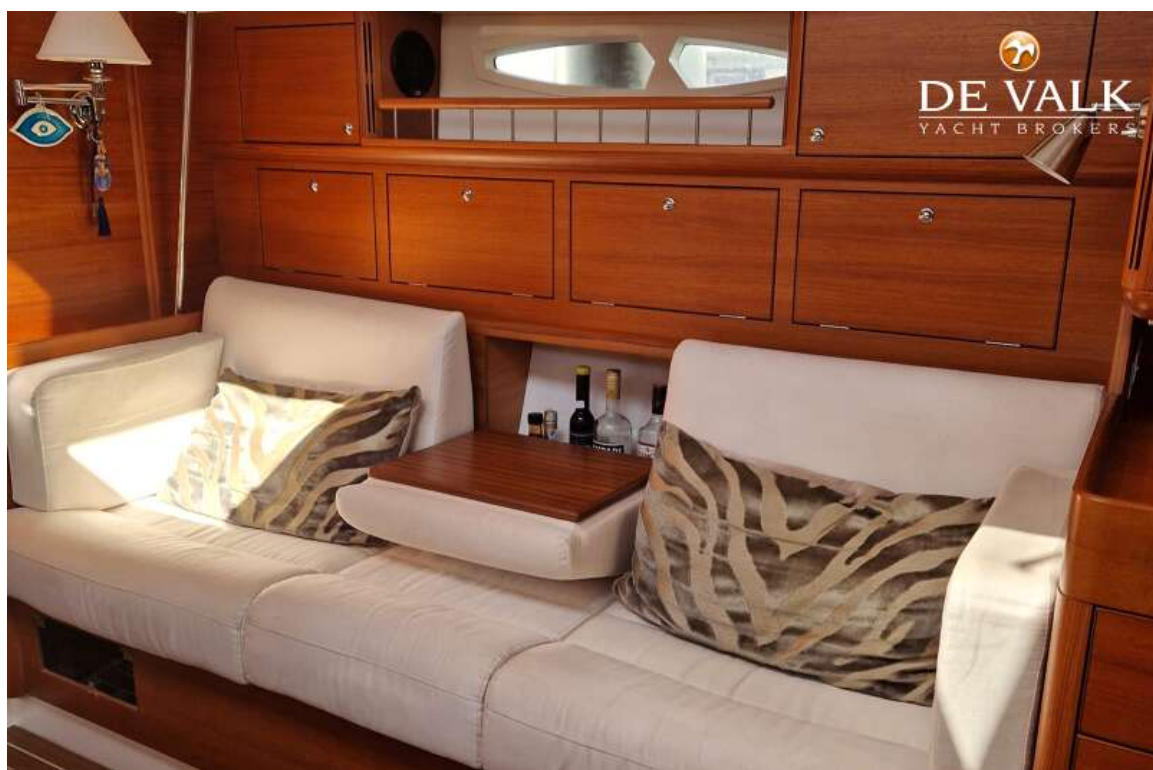


## X-YACHTS XC 42





## X-YACHTS XC 42

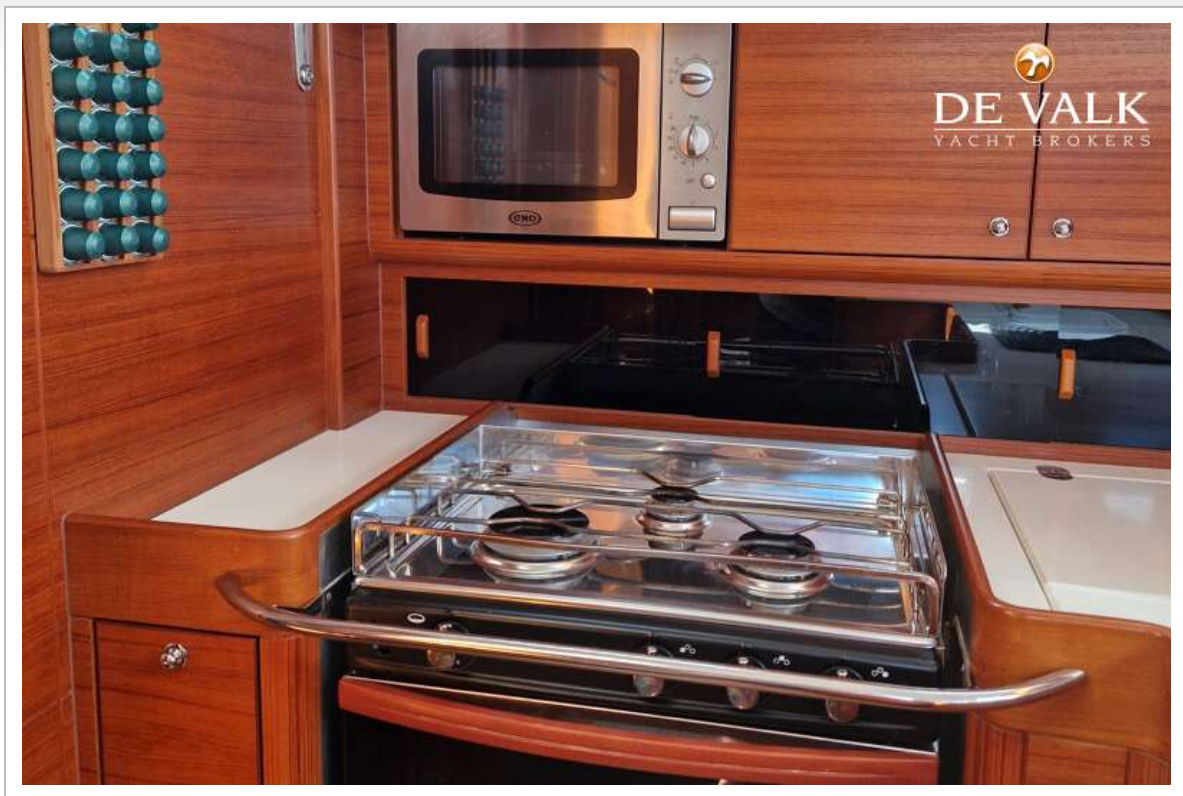


## X-YACHTS XC 42



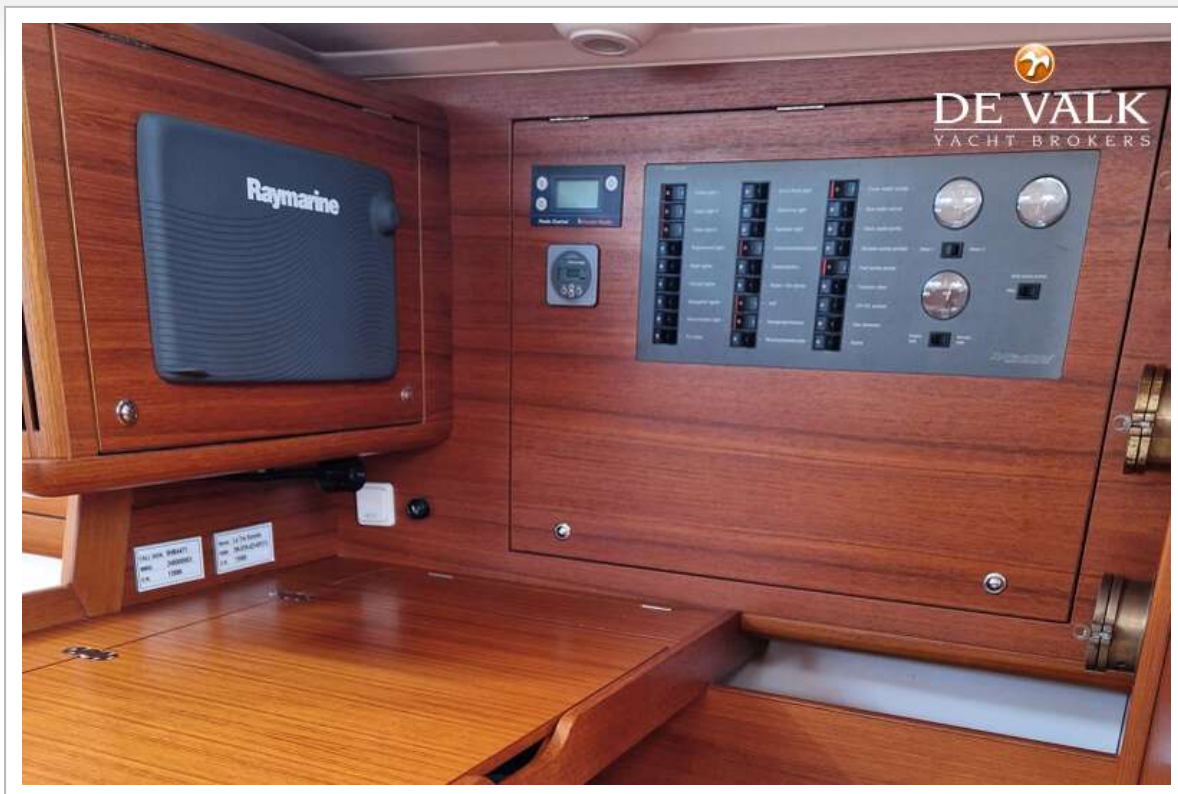


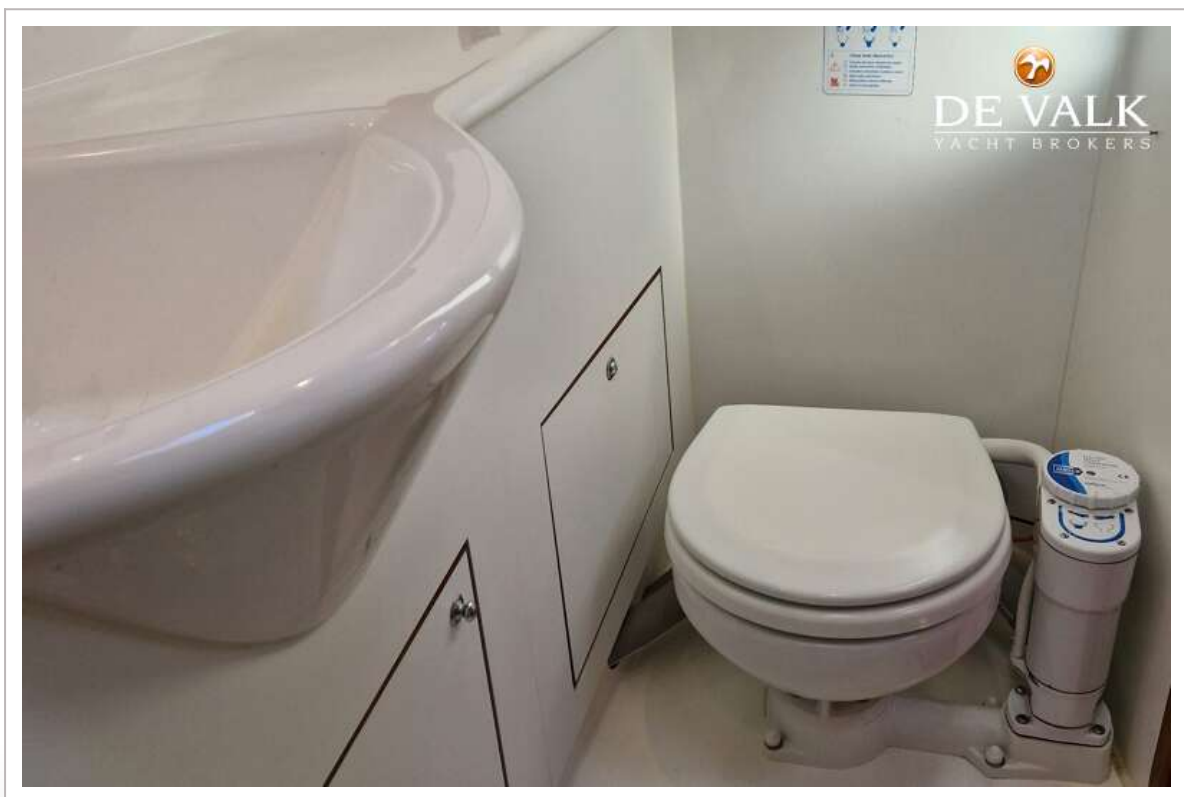
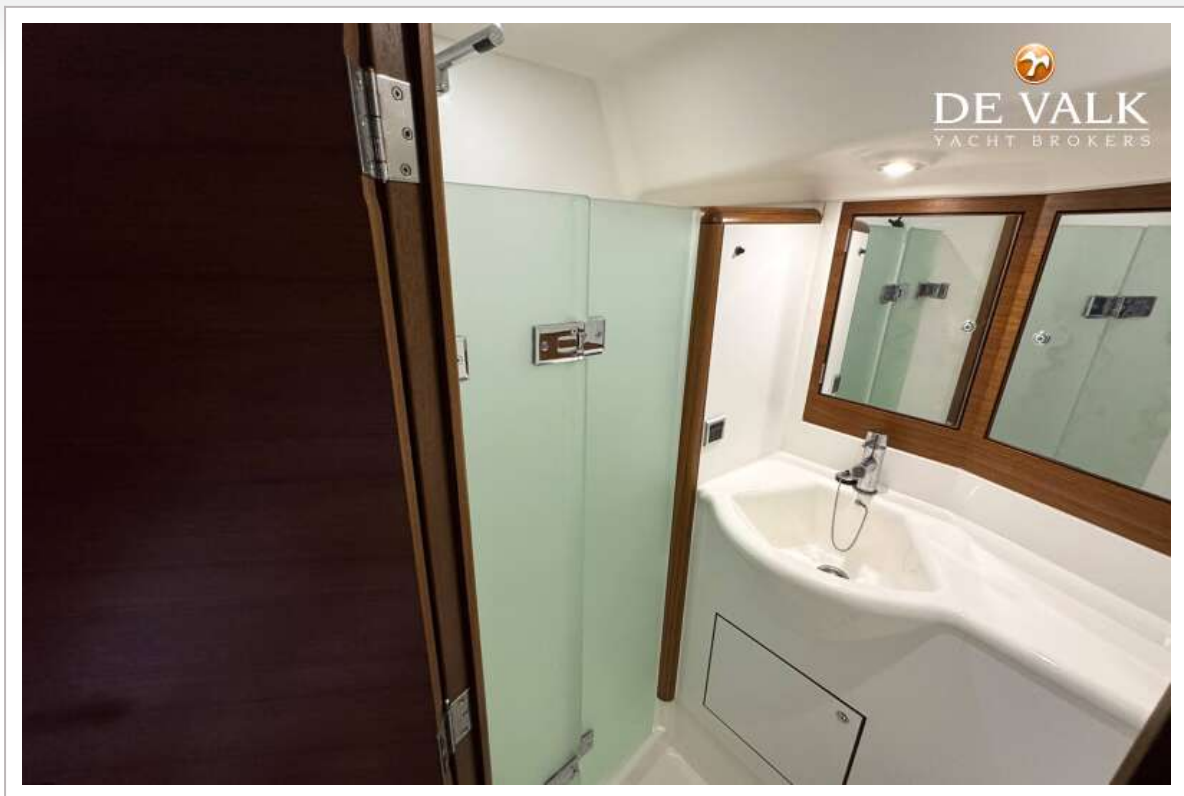
## X-YACHTS XC 42

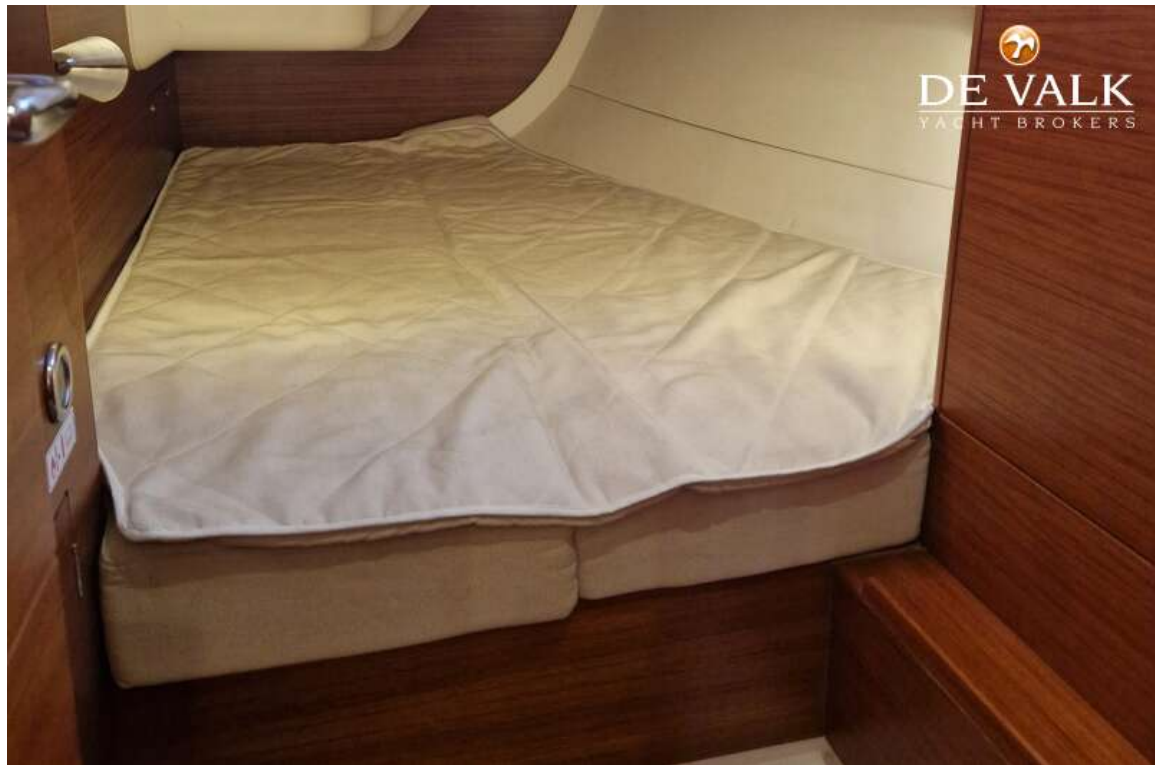




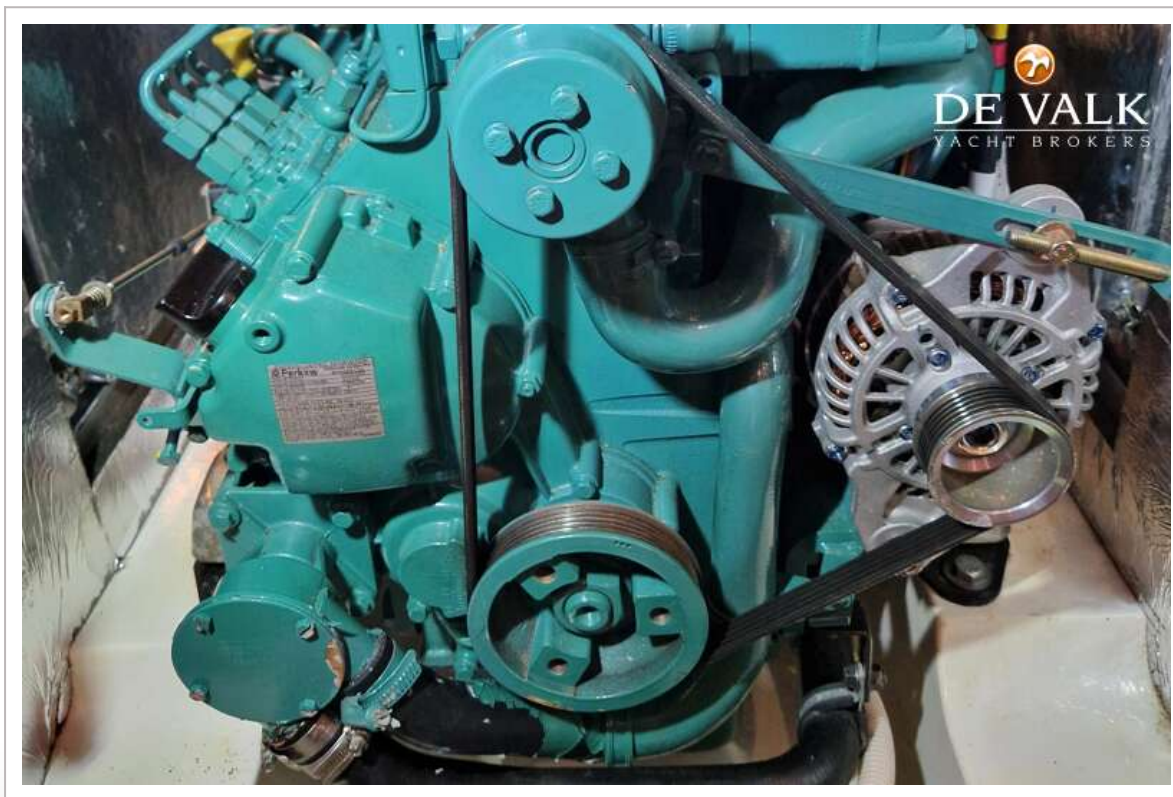
## X-YACHTS XC 42



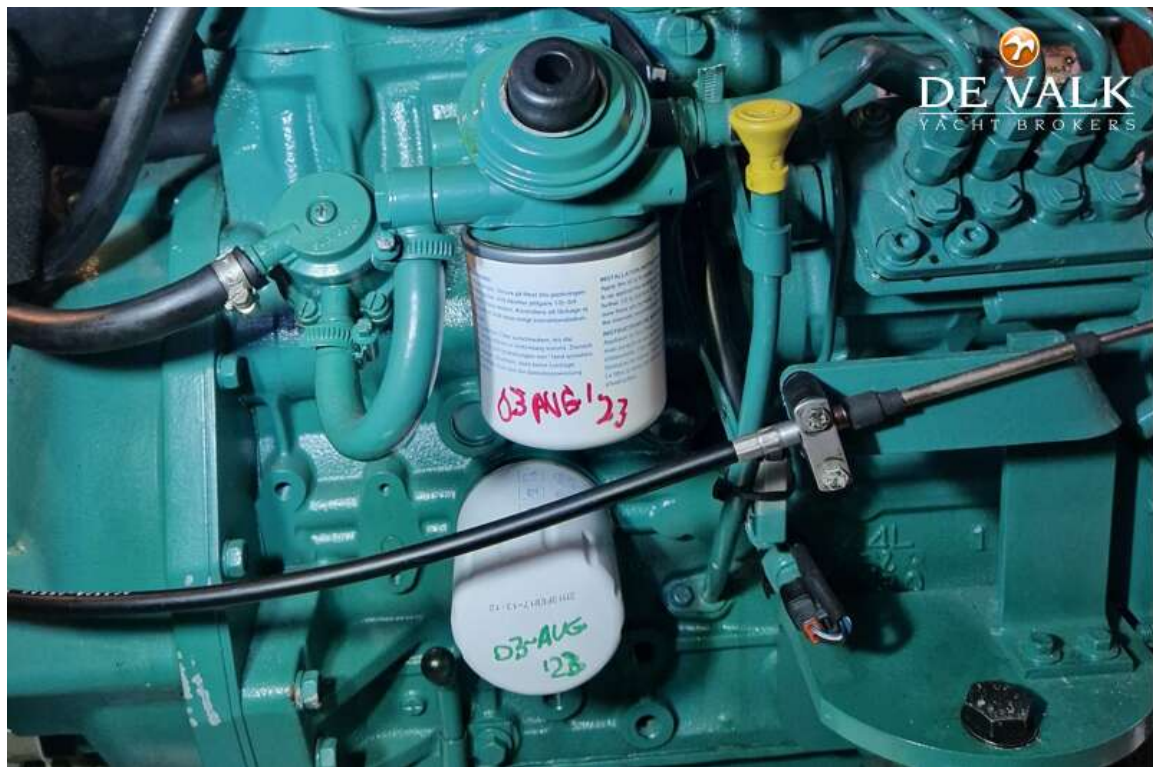








## X-YACHTS XC 42







## Interior layouts

Two interior layouts are offered with a variety of surface finishes, see p36-37 for more details.

X



### Standard layout

Cheer's cabin forward with owner's head compartment with separate shower including space for an optional washing machine.  
 Large saloon with seating for 8 around the table, plus additional seats on deck and side.  
 Cockpit forward facing sea with ample space on charts.  
 Spacious galley with 3 burner stove and optional built-in washing machine.  
 Off-wind head with pull-out shower.  
 Spacious aft double cabin with storage under berth.



### Optional layout

Cheer's cabin forward with owner's head compartment with separate shower including space for an optional washing machine.  
 Large saloon with seating for 8 around the table, plus additional seats on deck and side.  
 Cockpit forward facing sea with ample space on charts.  
 Spacious galley with 3 burner stove and optional built-in washing machine.  
 Off-wind head with pull-out shower.  
 Spacious aft double cabin with storage under berth.

