



DE VALK

YACHT BROKERS



JAGUAR 92



DE VALK
YACHT BROKERS

JAGUAR 92

BROKER'S COMMENTS

"Enter the world of exclusive seafaring with the Jaguar 92, a masterpiece of luxury with four magnificent guest cabins and two dedicated crew cabins. This yacht promises not only an extraordinary maritime experience, but also unparalleled hospitality for you and your party. Discover the perfect balance of style and functionality as you relax in the opulence of four beautifully appointed guest cabins, each with a private bathroom. Photos 08-2024."

Arjen Hoeksma

SPECIFICATIONS

Dimensions	27,54 x 6,45 x 1,25 (m)	Builder	Jaguar Yachts
Built	2010	Cabins	4
Material	GRP	Berths	8
Engine(s)	2 x MTU V type diesel	Hp/Kw	2 x 2000 (hp), 1472 (kw)
Asking price	EUR 1.895.000 (vat: not paid)	Lying	not at sales office

CONTACT

Sales office	De Valk Dalmatia	Telephone	+385 (0)218 68003
Address	Ul. Velimira Skorpika 22000 Sibenik Croatia	Fax	+385 (0)218 68003
		E-mail	dalmatia@devalk.nl

DISCLAIMER

These particulars are given in good faith as supplied but cannot be guaranteed and cannot be used for contracts.



GENERAL

Model	JAGUAR 92
Type	motor yacht
LOA (m)	27,54
Beam (m)	6,45
Draft (m)	1,25
Year built	2010
Builder	Jaguar Yachts
Country	Italy
Designer	Caliari Design
Gross tonnage	97.48
Hull material	GRP
Hull colour	black
Hull shape	deep-V
Rubbing strake	fender rope
Deck material	GRP
Deck finish	teak
Superstructure deck finish	teak
Cockpit deck finish	teak
Antifouling (year)	2024
Window frame	stainless steel
Window material	tempered glass
Portholes	stainless steel
Radar arch	non collapsible
Fuel tank (litre)	GRP 8.000
Level indicator (fuel tank)	yes
Freshwater tank (litre)	GRP 1500
Level indicator (freshwater)	yes
Blackwater tank (litre)	GRP 1000
Level indicator (blackwater)	yes
Blackwater tank extraction	deck extraction + pump



Wheel steering	hydraulic
Inside helm position	yes
Outside helm position	hydraulic
Emergency tiller	yes
Extra info	yes

ACCOMMODATION

Cabins	4
Berths	8
Crew cabin	yes
Crew berths	8
Floor	carpet
Aft deck	yes
Deck saloon	yes
Saloon	yes
Heating	central hot water
Heating 2	diesel ducted hot air
Air-conditioning	Condaria Chiller PCW MFLC 30000 / Webasto C27M-R410A Chiller
Galley	yes
Sink	emaille
Cooker	electric
Extractor	yes
Gas alarm	yes
Fridge	with freezer compartment
Freezer	yes
Hot water system	220V + engine
Water pressure system	electrical
Dishwasher	SMEG UD520D
Coffee maker	Nespresso
Crockery	yes



Waste compactor	yes
Owners cabin	double bed
Wardrobe	hanging/drawers/shelves
Bathroom	en suite
Toilet	en suite
Toilet system	electric
Wash basin	in the bathroom
Shower	en suite
Guest cabin 1	double bed
Wardrobe	hanging/drawers/shelves
Bathroom	en suite
Toilet	en suite
Toilet system	electric
Shower	en suite
Guest cabin 2	twin single
Wardrobe	drawers
Toilet	en suite
Toilet system	electric
Wash basin	in the bathroom
Bath tub	en suite
Guest cabin 3	twin single
Wardrobe	drawers
Toilet	en suite
Toilet system	electric
Wash basin	in the bathroom
Shower	shared
Guest cabin 4	double bed
Wardrobe	hanging and drawers
Toilet	en suite
Toilet system	electric
Wash basin	at the toilet
Shower	en suite



Crew cabin(s)	4 single berths / 2 cabins
Toilet (crew)	yes
Toilet system	electric
Washing machine	Miele TEE735WP Eco
Dryer	Miele WT2780

MACHINERY

No of engines	2
Make	MTU
Type	V type
HP	2000
kW	1472
Fuel	diesel
Maximum speed (kn)	30
Cruising speed (kn)	15
Range (nm)	300
Engine hours	1150
Engine cooling system	freshwater heat exchanger
Drive	surface drive
Engine controls	electrical
Gearbox	hydraulic
Bowthruster	hydraulic
Sternthruster	hydraulic
Exhaust	watercooled
Propeller type	fixed
Electric bilge pump	yes
Bilge alarm	yes
Generator	wet exhaust 2x Kohler 33 Kva
Running hours generator	both 5.250h
Batteries	yes



Start battery	8x
Service battery	5x Tommateck 200A
Generator battery	2x
Battery monitor	yes
Battery charger	yes
Inverter	1x Bluepower
Battery charger/inverter	3x Victron Skylla
Shorepower	with cable
Watermaker	2x Seamar 350ltr/h
Trimtabs	yes
Extra info	Joystick control

NAVIGATION

Compass	yes
Electric compass	yes
Depth sounder	Furuno
Log	Furuno
Windset	Furuno
Fish finder	yes
VHF	Furuno
VHF handheld	5x XLcom IC-M85, 1x XICM25, 2x ICGM1600E
Autopilot	Furuno
Rudder angle indicator	yes
Radar	Furuno
GPS	Furuno
Plotter	yes
Weather receiver	yes
Navtex	yes
PC connection	yes
AIS receiver	yes
Transmitter	yes



EPIRB	yes
Camera	4x

EQUIPMENT

Fixed windscreen	yes
Bimini	yes
Sun awning	yes
Cockpit cushions	yes
Cockpit table	yes
Cockpit chairs	yes
Transom door	yes
Gangway	Opacmare
Deck shower	yes
Anchor	Delta
Anchor chain	120 mtrs galvanized
Anchor 2	Danforth
Anchor chain	yes
Capstan	yes
Windlass aft	electrical
Dinghy	No
Outboard	yes
Sea railing	stainless steel
Life raft	yes
Last life raft survey	February 2024
Lifejackets	yes
Safety harness	yes
Lifebuoy	yes
Danbuoy	yes
Safety lines on deck	yes
Wiper	yes



Clearview window	yes
Window ventilator	yes
Window heating	yes
Horn	electric
Radar reflector	yes
Fenders	yes
Mooring lines	yes
Spare parts	yes
Tools	yes
Alarm system	yes
TV	5x Sony, and Samsung
TV receiver	yes
iPod connection	yes
Surround Sound System	Bose in saloon, JBL deck
Speakers in salon	yes
Speakers in cabin	yes
Clock - barometer	yes
Fire extinguisher	yes
Latest extinguisher survey	February 2024
Auto extinguisher system	yes

RIGGING

Winchcovers	yes
--------------------	-----



JAGUAR 92



JAGUAR 92



JAGUAR 92



JAGUAR 92



JAGUAR 92



JAGUAR 92



JAGUAR 92



JAGUAR 92



JAGUAR 92

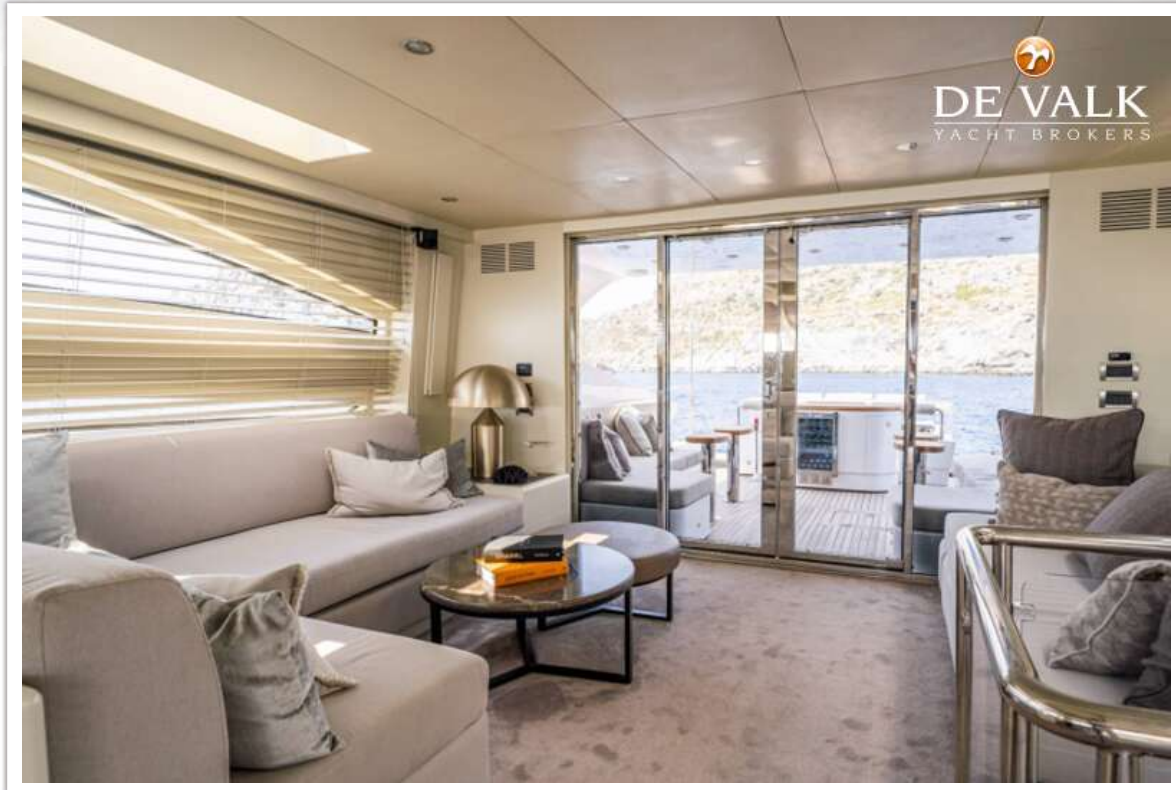


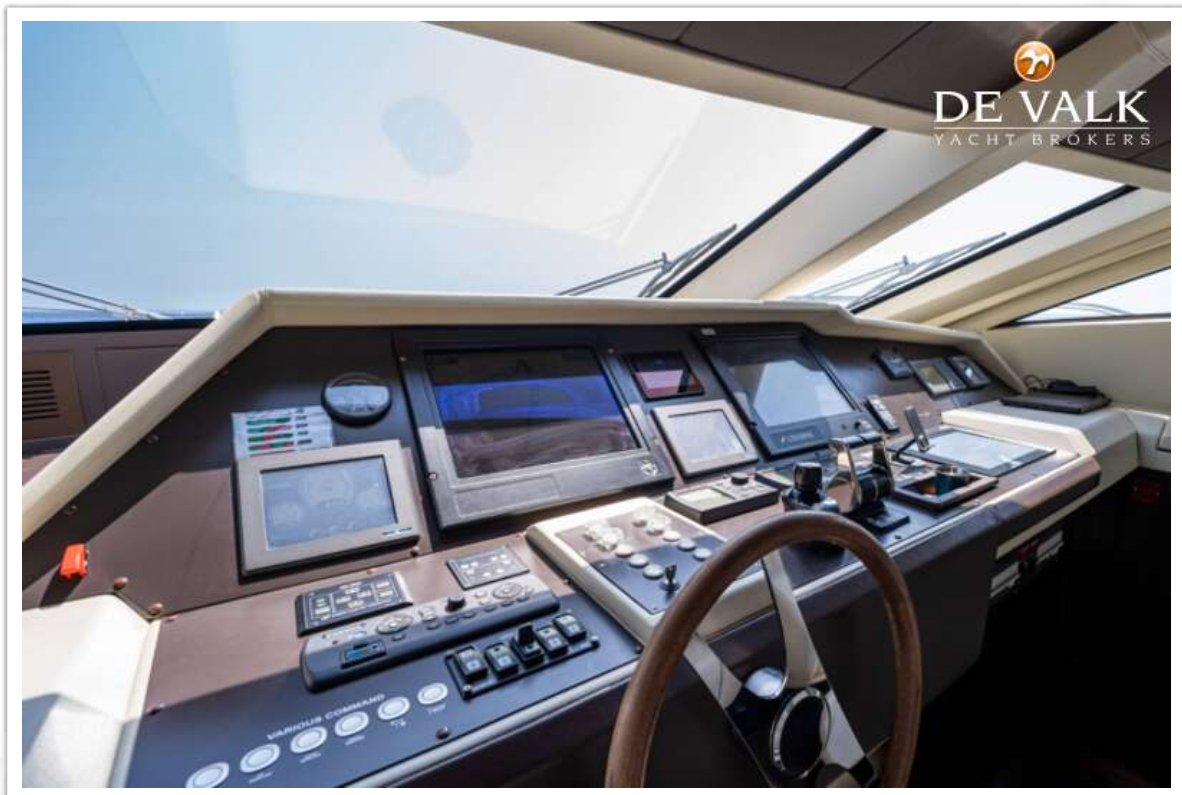
JAGUAR 92



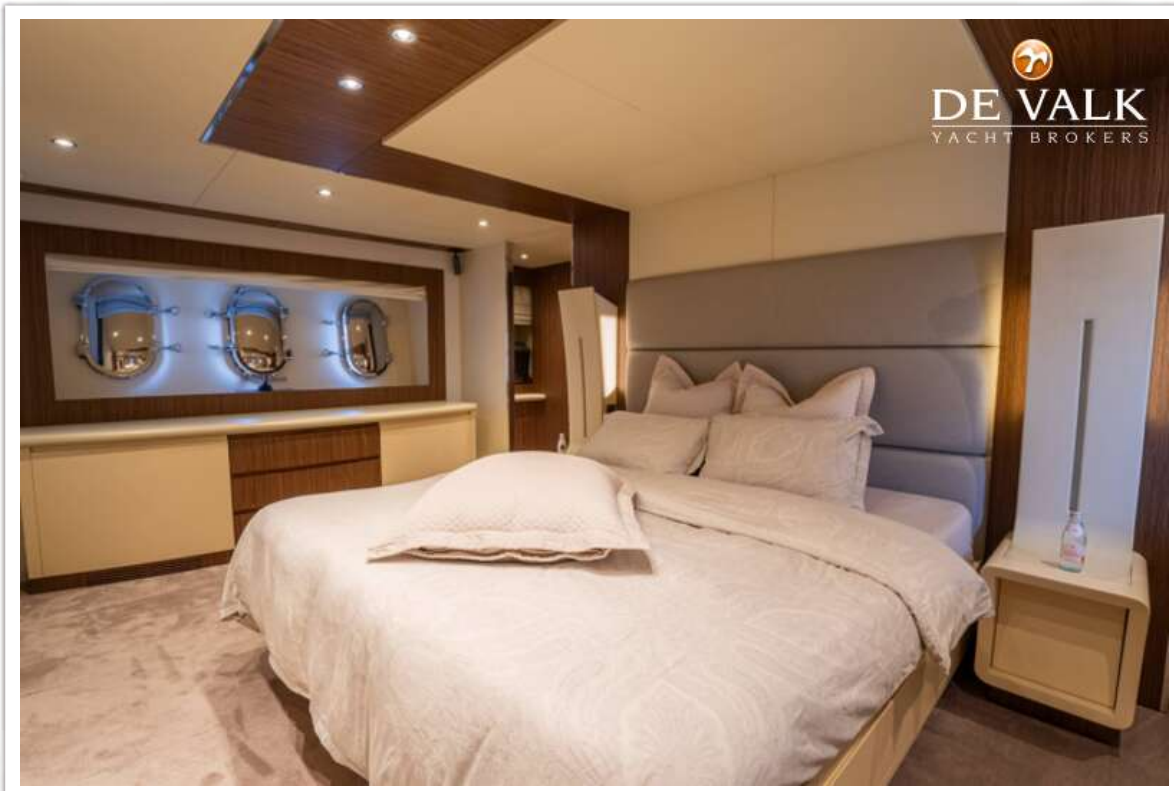
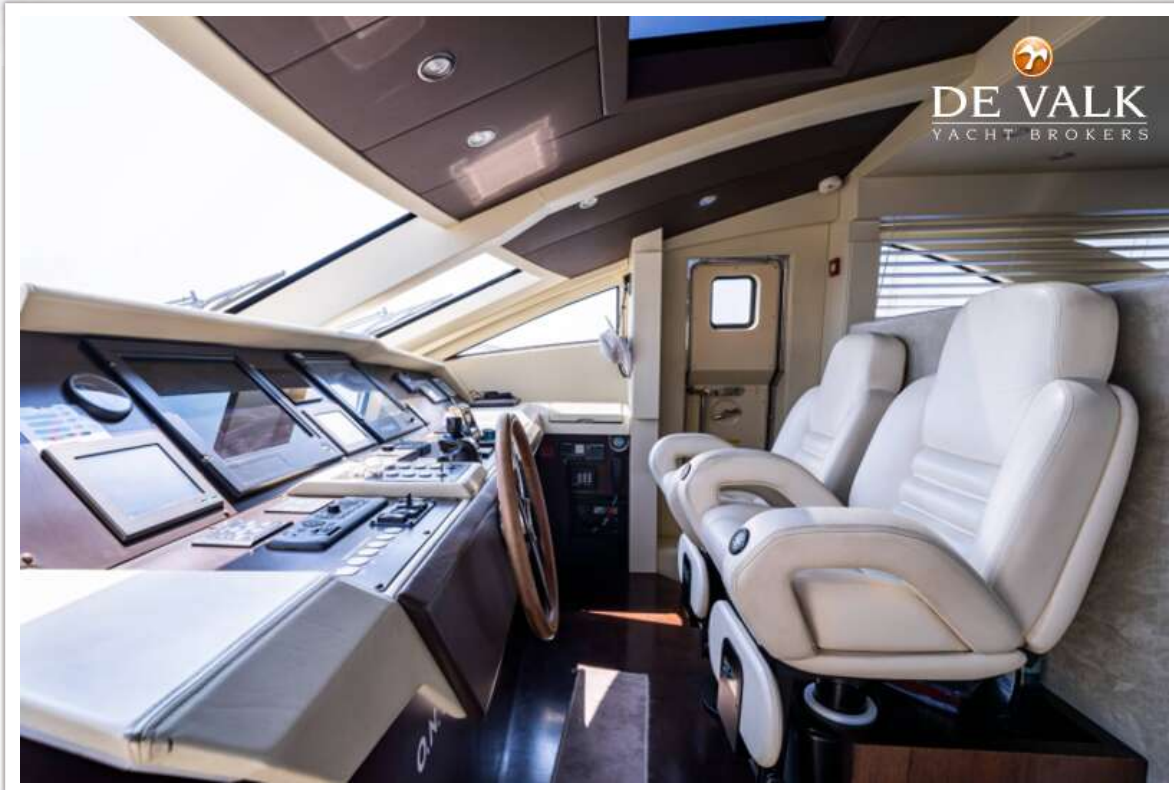
JAGUAR 92



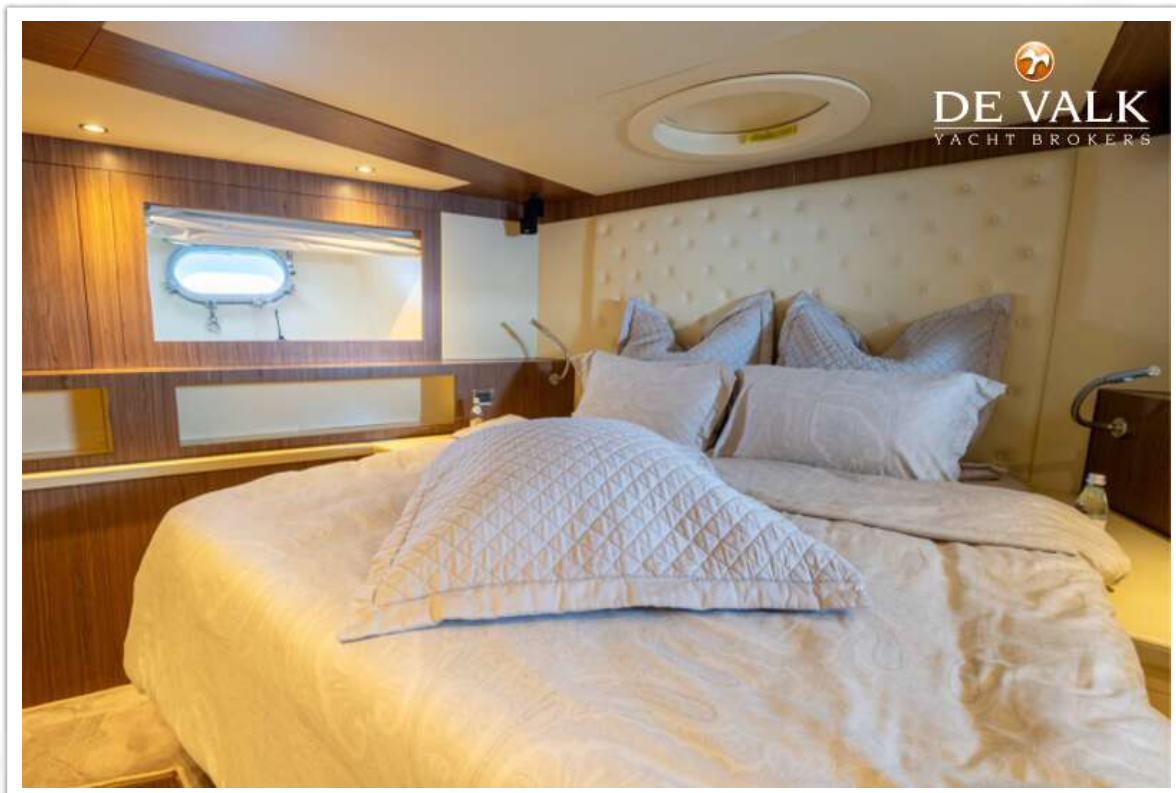


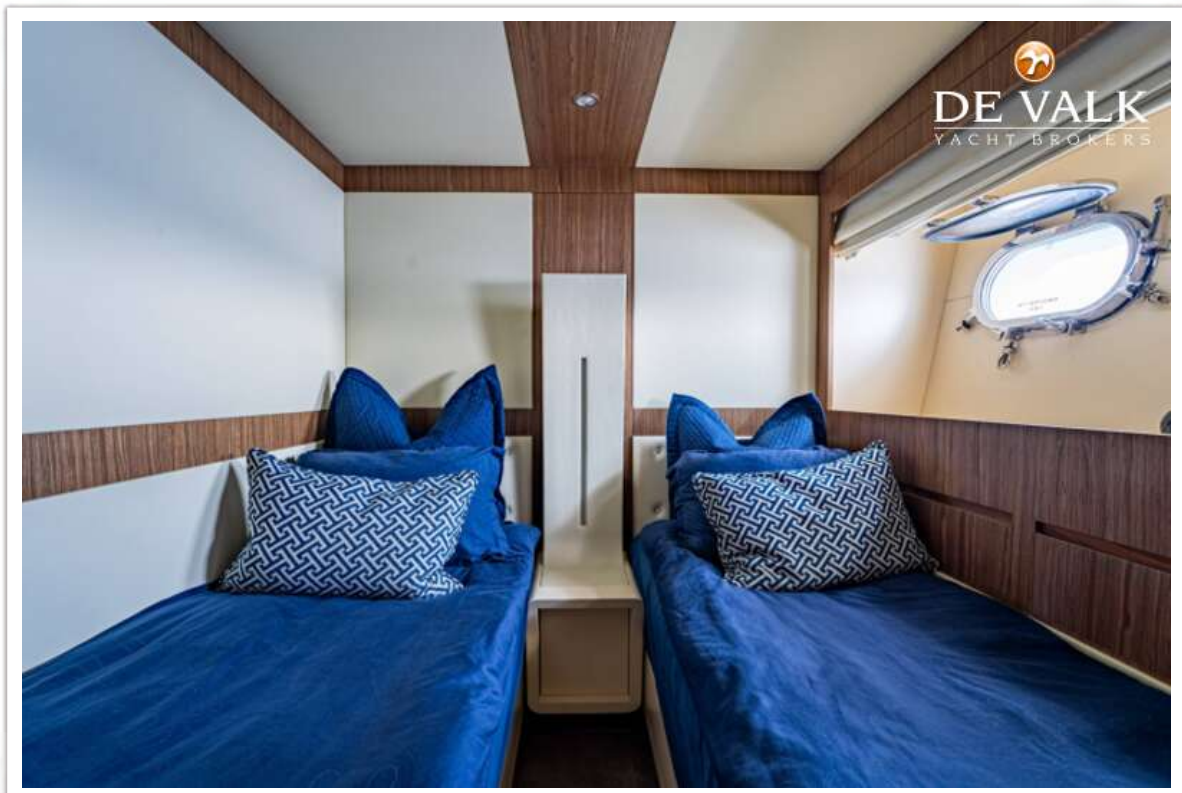
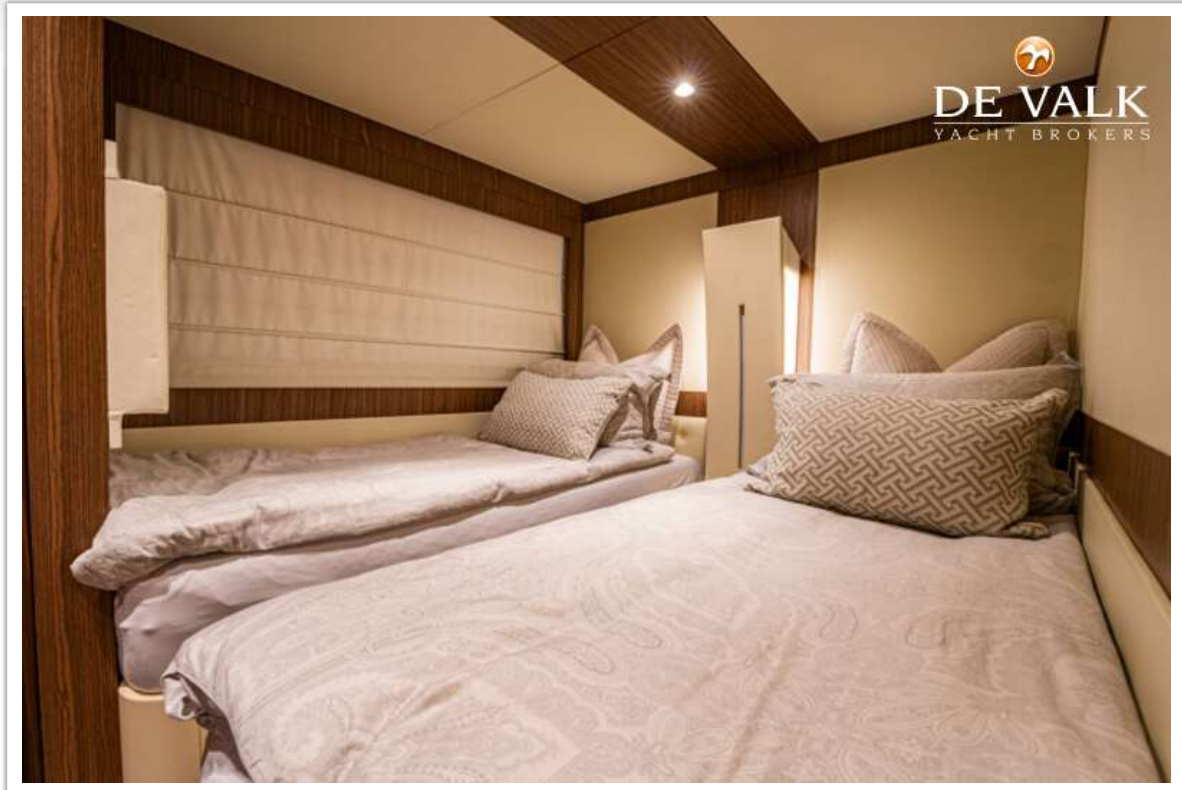


JAGUAR 92

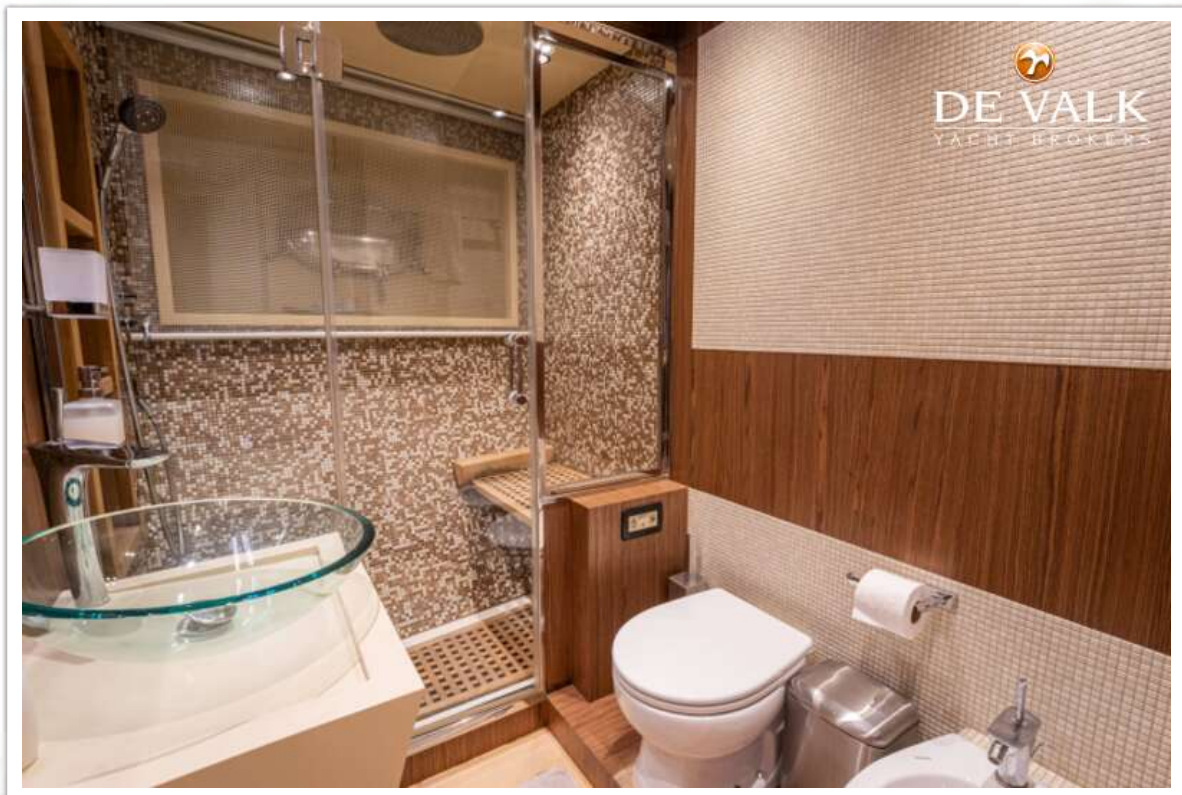


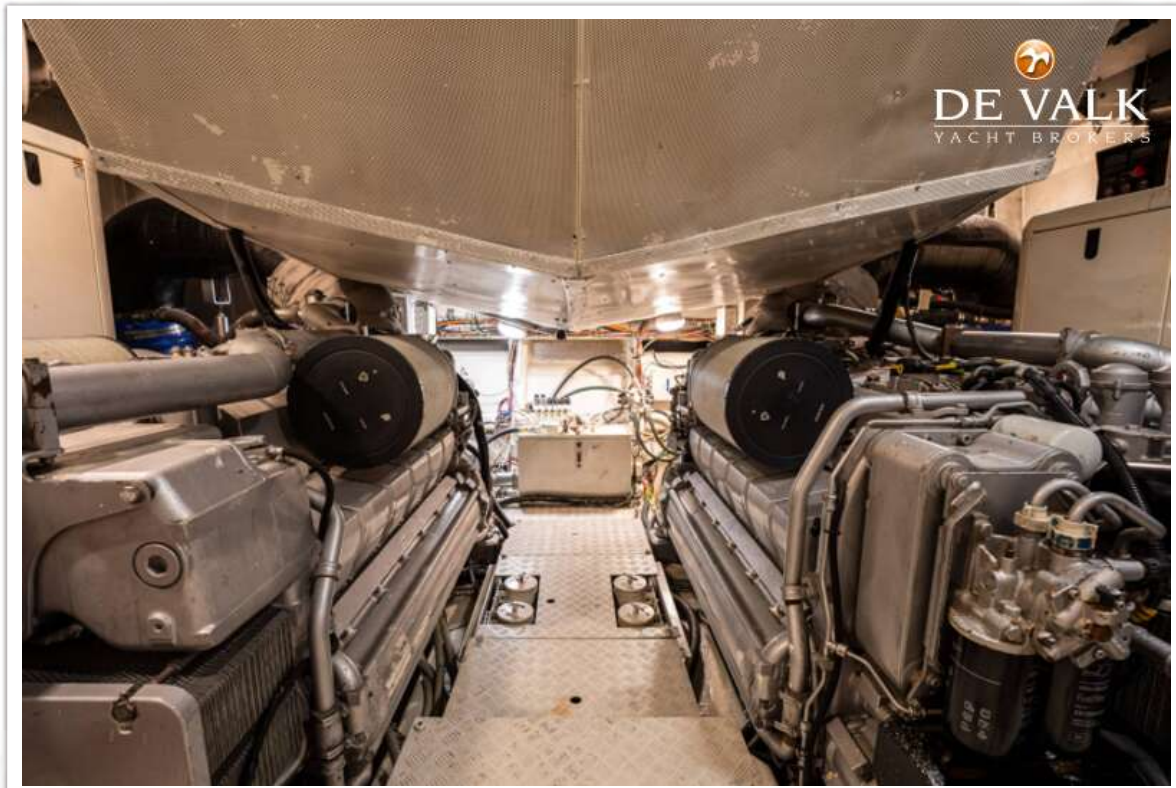
JAGUAR 92





JAGUAR 92





JAGUAR 92

