



## HOEK DESIGN TRULY CLASSIC 78

# HOEK DESIGN TRULY CLASSIC 78

## BROKER'S COMMENTS

The Hoek design Truly Classic 78 "Bontekoning" has a lovely flush teak deck, long overhangs, and remarkably attractive wheel house. This family cruiser is designed for shallow waters to be handled by two persons, thanks her hydraulic in-mast furling system, powered sheet winches, and hydraulic push button furls on the head sails. Her 78 ft size also made it possible to create a full headroom engine room. Extensive refit in season 2021-2022 and highly customized. Kept in mint condition ever since. Ask us for the full refit overview

*Hans Visser*

## SPECIFICATIONS

<b>Dimensions</b>	23.80 x 5.60 x 2.60 (m)	<b>Builder</b>	Dörr jachtbetimmeringen
<b>Built</b>	2006	<b>Cabins</b>	3
<b>Material</b>	Aluminium	<b>Berths</b>	6
<b>Engine(s)</b>	1 x Perkins Sabre M185C diesel	<b>Hp/Kw</b>	185.00 (hp), 136.16 (kw)
<b>Asking price</b>	€ 1.950.000 (VAT Not paid)	<b>Lying</b>	elsewhere / Not at sales office

## CONTACT

<b>Sales office</b>	De Valk Hindeloopen B.V.	<b>Telephone</b>	+31 514 52 40 00
<b>Address</b>	Oosterstrand 1 8713 JS Hindeloopen NL	<b>E-mail</b>	hindeloopen@devalk.nl

## DISCLAIMER

These particulars are given in good faith as supplied but cannot be guaranteed.



# HOEK DESIGN TRULY CLASSIC 78

## GENERAL

Model	HOEK DESIGN TRULY CLASSIC 78
Type	sailing yacht
LOA (m)	23,80
LWL (m)	16,84
Beam (m)	5,60
Draft (m)	2,60
Air draft (m)	29,00
Headroom (m)	2,10
Year built	2006
Builder	Dörr jachtbetimmeringen
Country	The Netherlands
Designer	Hoek Design naval architects
Displacement (t)	48
Ballast (tonnes)	lead   16 t.
CE norm	A
Hull material	aluminium
Hull colour	green
Hull shape	round-bilged
Keel type	bulb keel
Deck material	aluminium
Deck finish	teak
Superstructure deck finish	teak
Cockpit deck finish	teak
Antifouling (year)	2025
Dorades	Stainless steel
Window material	double glazing
Deckhatch	4x singe skylight   1x custom Rondal teak   1 x flush skylight
Portholes	stainless steel
Insulation	foam   Special care was taken to minimize noise & vibration
Fuel tank (litre)	aluminium   900 ltr. (237 USG)



# HOEK DESIGN TRULY CLASSIC 78

Fuel tank 2 (litre)	aluminium   900 ltr. (237 USG)
Level indicator (fuel tank)	yes
Fuel daytank (litre)	aluminium   180 ltr. (47,5 USG)
Level indicator (daytank)	Glass
Freshwater tank (litre)	aluminium   2 x 850 ltr. total 1700 ltr. (442 USG)
Level indicator (freshwater)	yes
Blackwater tank (litre)	500 ltr. (130 USG) also used for grey water
Level indicator (blackwater)	yes
Blackwater tank extraction	Deck extraction + pump and back-up pump
Greywater tank (litre)	See black water tank
Wheel steering	Jefa steering direct drive 3,5 rev port/starboard 1250 mm diam.
Inside helm position	Through autopilot control panel
Outside helm position	mechanical
Emergency tiller	yes
More info on paintwork	Clear varnish items redone in 2025
Extra info	Balanced spade rudder with skeg
Extra info	Built under Lloyds. Refit in 2021-2022. Regular extensive maintenance since then.
Extra info	All bulkheads and constructions are made with noise insulation.

## ACCOMMODATION

Cabins	3
Berths	6
Interior	teak   Art Deco
Floor	parquet   Ash
Pilot house/deck saloon	yes
Saloon	yes
Headroom saloon (m)	2.10 mtr.
Heating	central hot water   Webasto with fan coils
Air-conditioning	single cycle airco   new 2022   controlled low energy consumption, 48.000 BTU
Navigation center	yes



# HOEK DESIGN TRULY CLASSIC 78

Chart table	yes
Opening door to cockpit	yes
Galley	U-Shaped
Countertop	corian
Sink	stainless steel
Cooker	induction   Miele 4 zone
Oven	Atag with steam function
Extractor	Bosch
Microwave/oven combi	Bosch
Fridge	Frigoboat 160 ltr.   Stainless custom drawer
Freezer	Frigoboat 160 ltr.   Stainless custom drawer
Hot water system	220V or central heating   2x webasto 50 ltr. each
Water pressure system	electrical   2x electrical pumps
Kettle	yes
Ice maker	Isotherm
Coffee maker	Nespresso
Crockery	For six persons
Owners cabin	double bed
Bed length (m)	2.00 mtr.
Wardrobe	hanging/drawers/shelves
Bathroom	en suite
Toilet	Tecma Evolution
Toilet system	electric
Wash basin	yes
Shower	yes
Guest cabin 1	twin single
Bed length (m)	2.00
Wardrobe	hanging and shelves
Bathroom	shared
Toilet	shared
Toilet system	electric   Tecma Evolution
Wash basin	in the bathroom



# HOEK DESIGN TRULY CLASSIC 78

Shower	shared
Guest cabin 2	twin single
Bed length (m)	2.00
Wardrobe	hanging and shelves
Washing machine/dryer combi	W71 Excellence Wash&Dry 8/5 kg

## MACHINERY

No of engines	1
Make	Perkins Sabre
Type	M185C
HP	185
kW	136.16
Fuel	diesel
Year installed	2006
Maximum speed (kn)	13
Cruising speed (kn)	8
Consumption (l/hr)	10
Engine cooling system	freshwater heat exchanger
Drive	shaft
Engine controls	electrical
Gearbox	hydraulic   and pitch control on propeller
Bowthruster	Hydraulic Lewmar LS 300 25kW retractable
Exhaust	watercooled   Silent separator
Thrust bearing	CENTAX type 50-LSS1
Propeller type	Pitch control on propeller
Propeller blades	4
Propeller shaft material	Stainless steel West Mekan, type 70EHWS
Manual bilge pump	yes
Electric bilge pump	yes
Bilge alarm	yes
Electrical installation	24 Volt DC & 230 Volt AC



<b>Generator</b>	silent separator   Fisher Panda AGT 6000 on 24 Volt DC; new 2022
<b>Generator 2</b>	silent separator   Fisher Panda AGT 6000 on 24 Volt DC; new 2022
<b>Batteries</b>	12V   300Ah communications and lighting
<b>Start battery</b>	24V   80Ah
<b>Service battery</b>	12 x 220 Ah   24V   2640 Ah total
<b>Generator battery</b>	2x 12V   80Ah   one for each gen.set
<b>Battery monitor</b>	Victron
<b>Battery charger</b>	Victron Skylla TG 24 100
<b>Inverter</b>	5x Victron Phoenix 24 3000
<b>Shorepower</b>	with cable
<b>Insulation transformer</b>	Victron
<b>Watermaker</b>	Schenker
<b>Extra info</b>	For nearly all equipment there are spare parts on board
<b>Extra info</b>	All bilge and water pumps renewed in 2021 (15 pcs total)
<b>Extra info</b>	Fuel pump day tank renewed in 2021

## NAVIGATION

<b>Compass</b>	Magnetic
<b>Electric compass</b>	B&G
<b>Multi control display</b>	B&G / Simrad with repeater in pilot house
<b>Depth sounder</b>	B&G
<b>Windset</b>	B&G
<b>VHF</b>	B&G
<b>VHF handheld</b>	Icom
<b>Autopilot</b>	2x B&G, each independent
<b>Radar</b>	B&G
<b>GPS</b>	Extra back-up Furuno
<b>Plotter</b>	B&G
<b>Navtex</b>	yes
<b>Wifi antenna</b>	yes



AIS transceiver	Simrad V5035
EPIRB	yes
Personal MOB transmitter	yes
Navigation lights	yes
Extra info	All B&G nav. equipment new in 2021-2022
Extra info	Switching system between Iridium-4/5G-Starlink-Wifi. Starlink with dual antenna system, 4/5G router with four sim cards

## EQUIPMENT

Cockpit cover	yes
Sun awning	yes
Cockpit cushions	yes
Cockpit table	yes
Boarding ladder	yes
Gangway	yes
Deck shower	yes
Anchor	CQR Plough   Stainless Steel
Anchor chain	Stainless Steel
Anchor 2	Spare anchor   aluminium
Windlass	Hydraulic Lewmar 3000
Deck wash	Salt water
Dinghy	AB Rib (2025)
Outboard	Mercury 20hp (2025)
Sea railing	stainless steel
Grab rail (superstructure)	teak
Railing side opening gates	yes
Pushpit	yes
Pulpit	yes
Life raft	2
Life raft (pers)	6
Last life raft survey	Valid until 2026





# HOEK DESIGN TRULY CLASSIC 78

Lifejackets	yes
Safety harness	yes
Lifebuoy	yes
Safety lines on deck	yes
Horn	yes
Binocular	yes
Fenders	yes
Mooring lines	yes
Spare parts	Plenty
Tools	yes
TV	yes
Radio	In each cabin
Surround Sound System	yes
Speakers in salon	yes
Speakers in cabin	yes
Clock - barometer	yes
Fire extinguisher	yes
Extinguisher in engine room	yes
Auto extinguisher system	yes
Extra info	2x Starlink; 4G/5G internet, Iridium
Extra info	Bauer Junior compressor with 3 scuba bottles
Extra info	Entire yacht is being service each year. In mint condition

## RIGGING

Rigging	cutter
Standing rigging	Rod   2022
Brand mast	Reckmann   Unstepped/stepped and repainted in 2022
Material mast	aluminium coated
Spreaders	3
Keel stepped mast	yes
Mainsail	North 128 m²



Stoway mast	yes
Cutterstay	yes
Genoa	North Sails 295m <sup>2</sup>
Genoa furler	Reckmann 2022
Cutter furler	yes
Staysail	North Sails 45m <sup>2</sup>
Staysail furler	Reckmann 2022
Yankee	145m <sup>2</sup>
Reefing System	main in-mast furling
Backstay adjuster	hydraulic
Boomvang	hydraulic Reckmann
Primary sheet winch	2x Lewmar 88 SS HST (2022) elec.hydr.
Secondary sheet winch	2x Lewmar 64 SS HST (2022) elec.hydr.
Genoa sheetwinches	2x Lewmar 64 HST (2022) elec.hydr.
Multifunctional winches	Lewmar
Extra info	Boom new in 2022
Extra info	All lines renewed in 2021



# HOEK DESIGN TRULY CLASSIC 78



# HOEK DESIGN TRULY CLASSIC 78





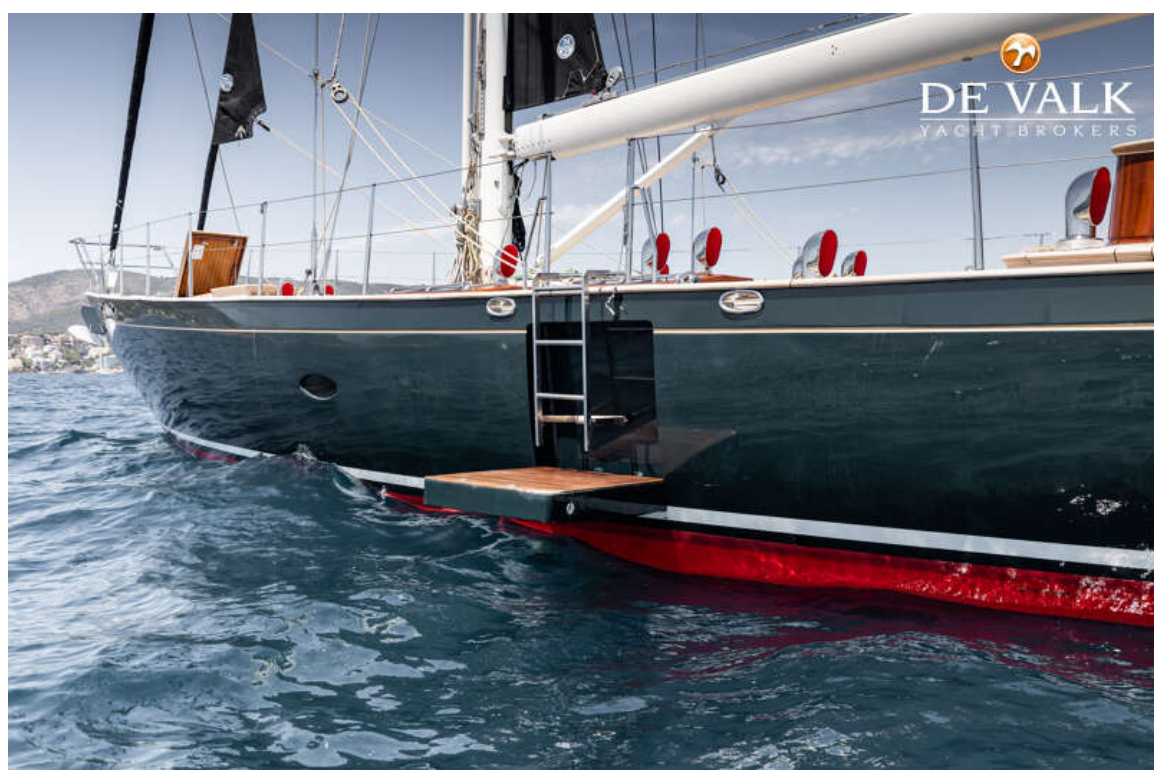
## HOEK DESIGN TRULY CLASSIC 78







# HOEK DESIGN TRULY CLASSIC 78

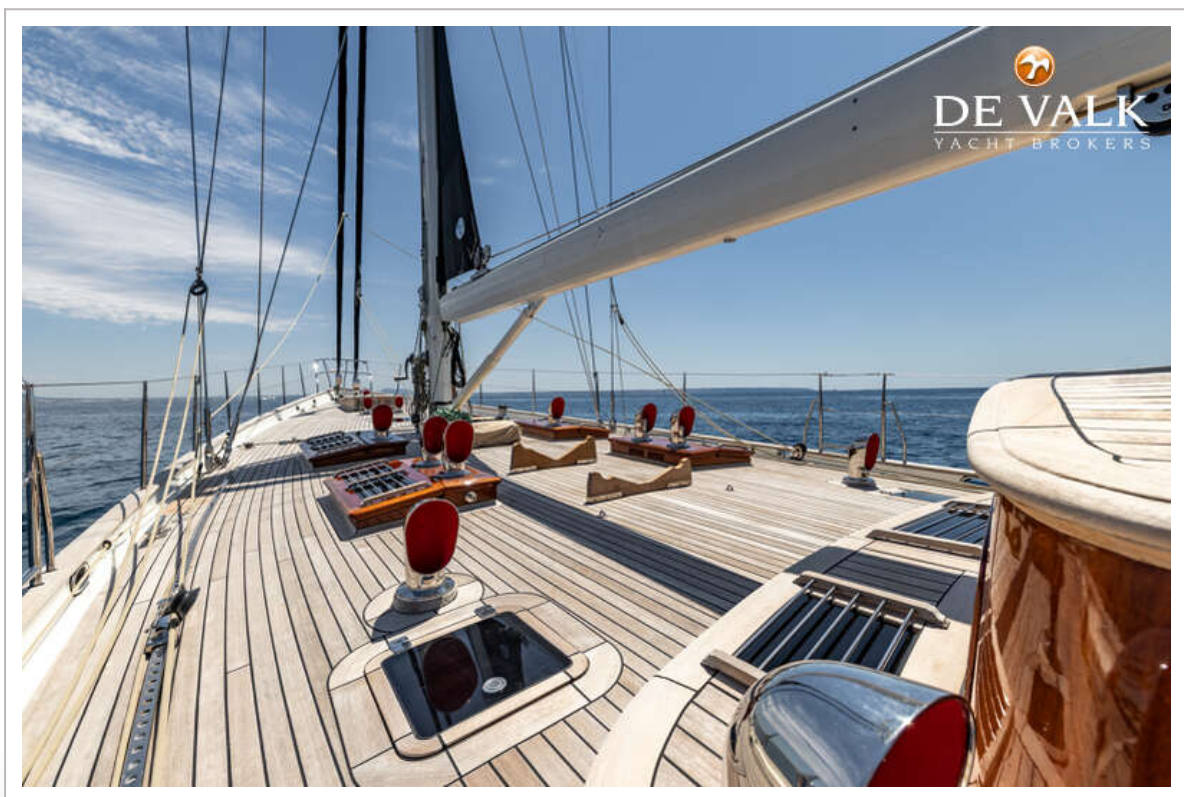
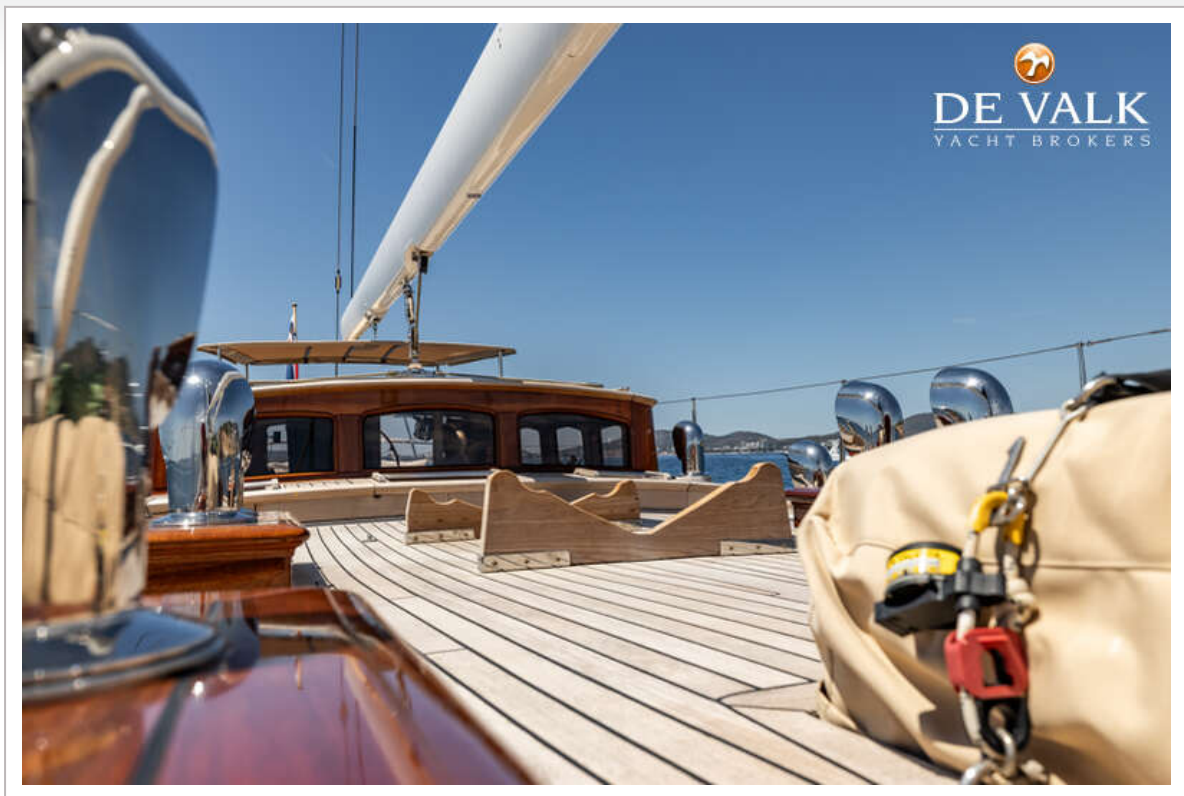


# HOEK DESIGN TRULY CLASSIC 78





# HOEK DESIGN TRULY CLASSIC 78

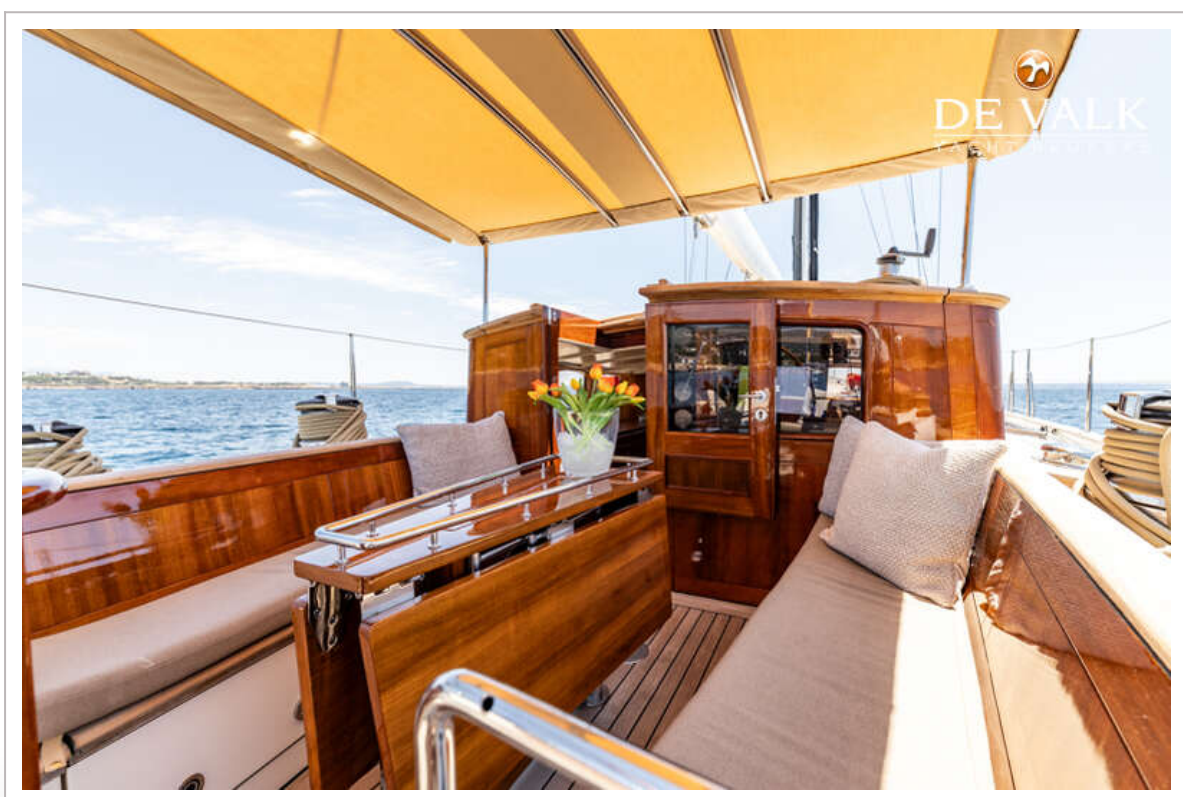


# HOEK DESIGN TRULY CLASSIC 78





## HOEK DESIGN TRULY CLASSIC 78

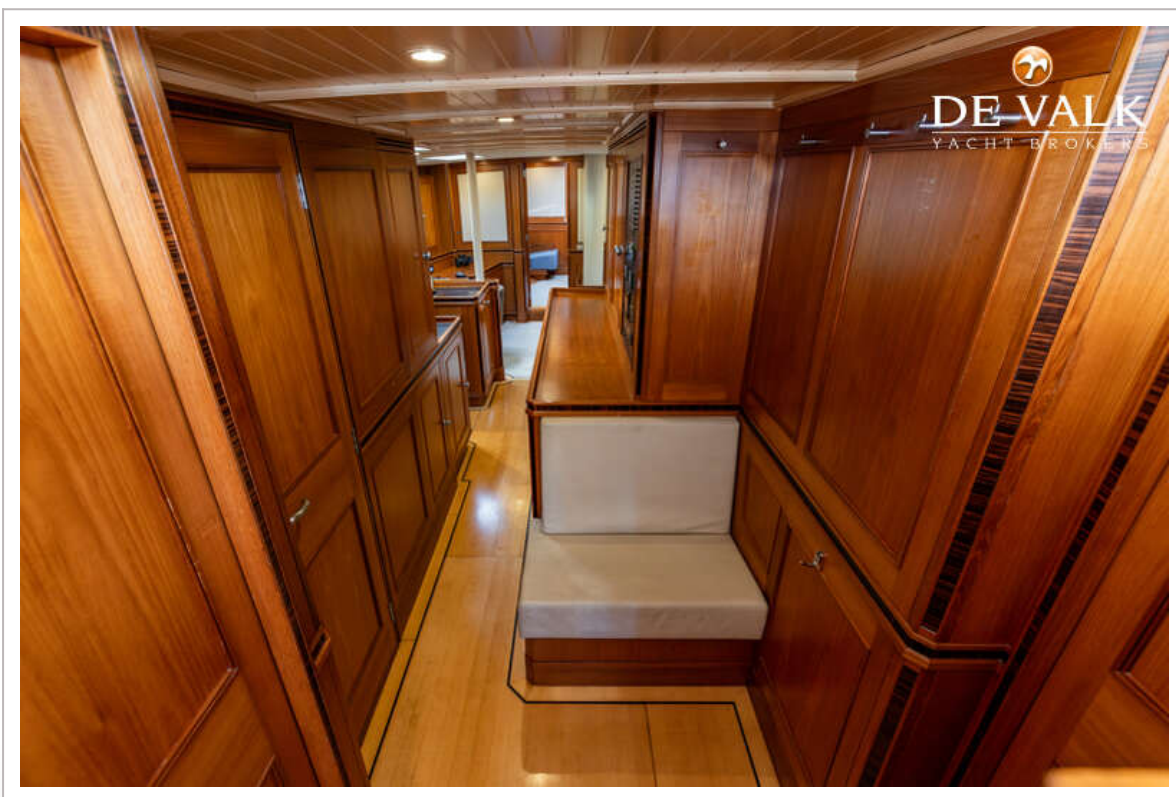
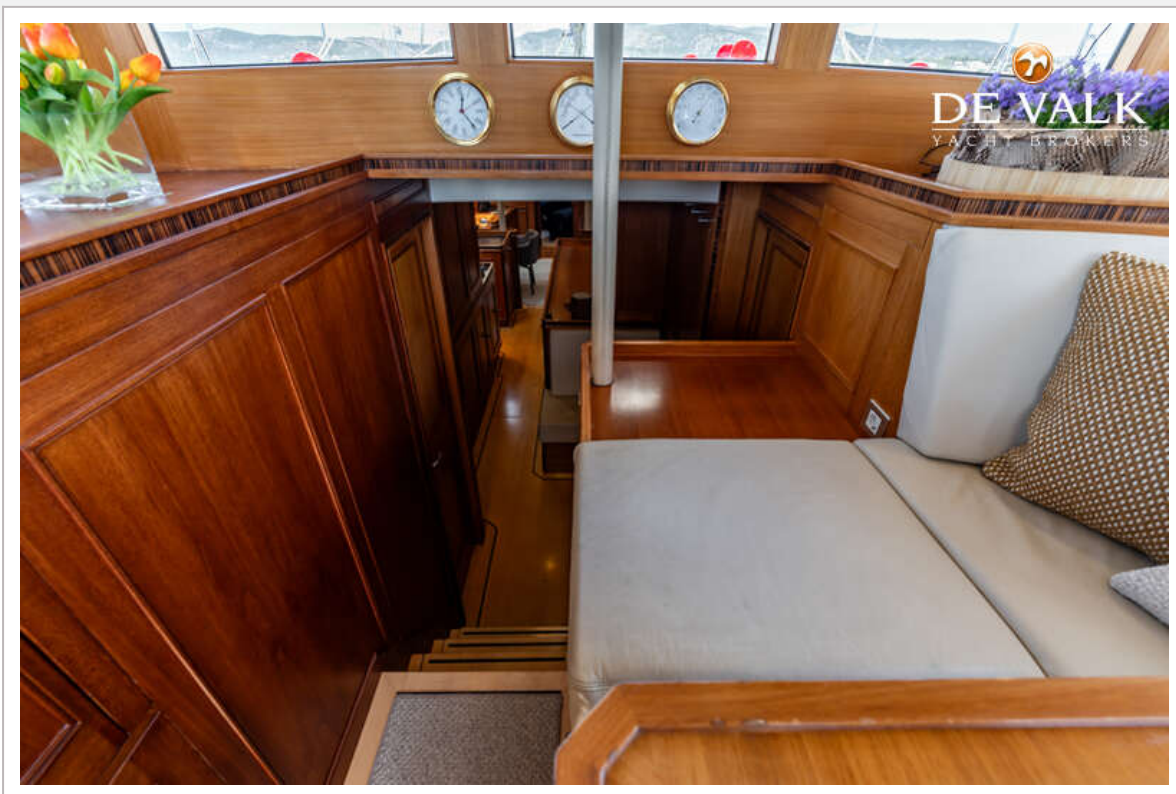


# HOEK DESIGN TRULY CLASSIC 78

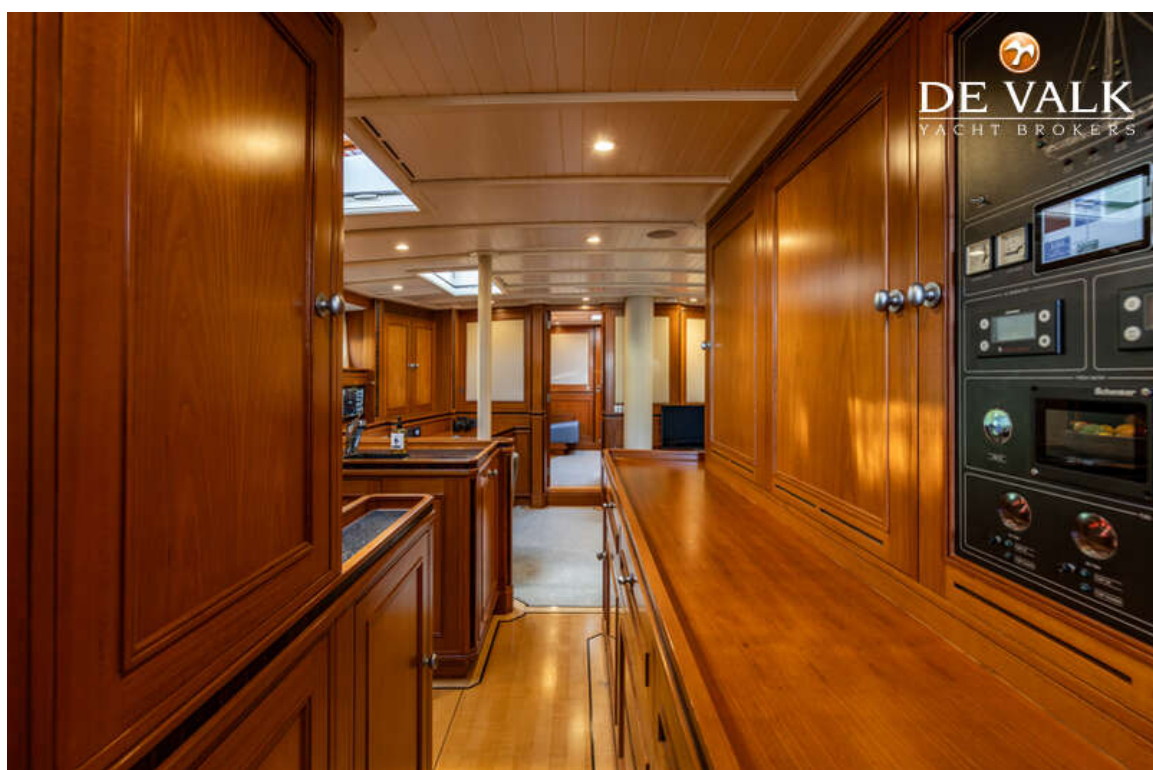




# HOEK DESIGN TRULY CLASSIC 78



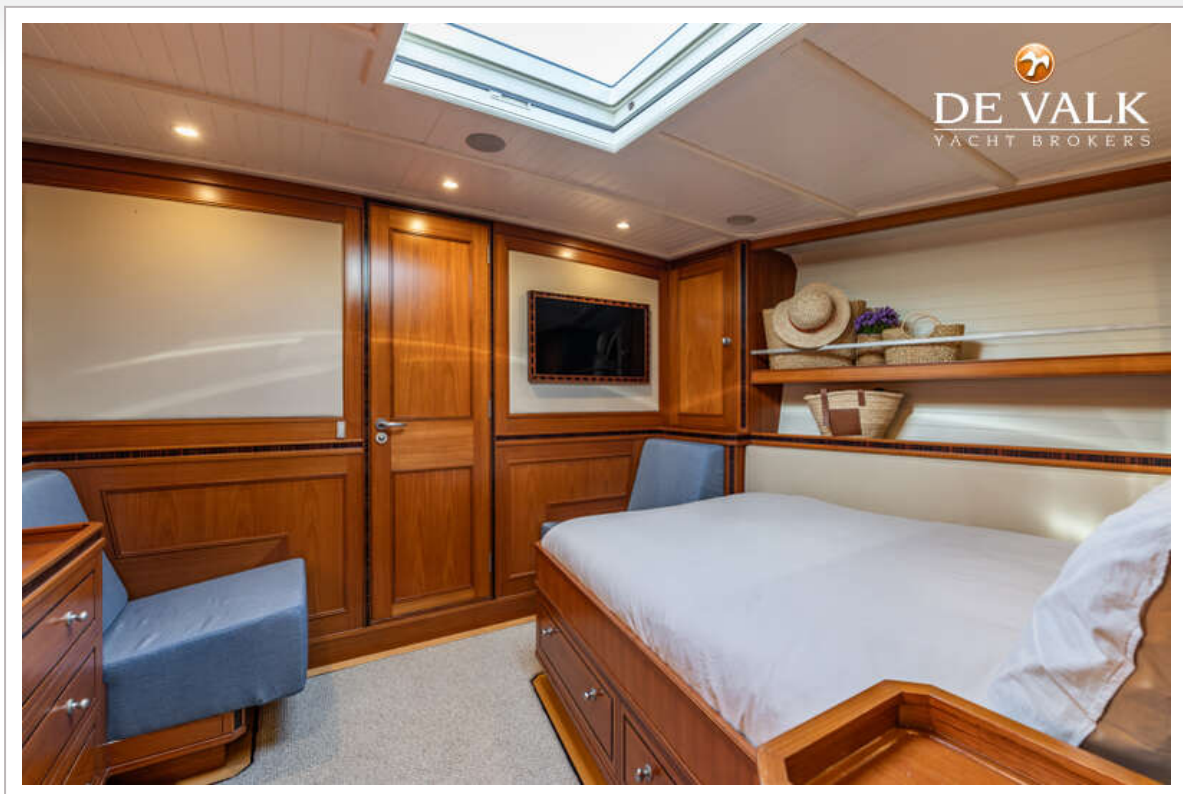
# HOEK DESIGN TRULY CLASSIC 78





# HOEK DESIGN TRULY CLASSIC 78

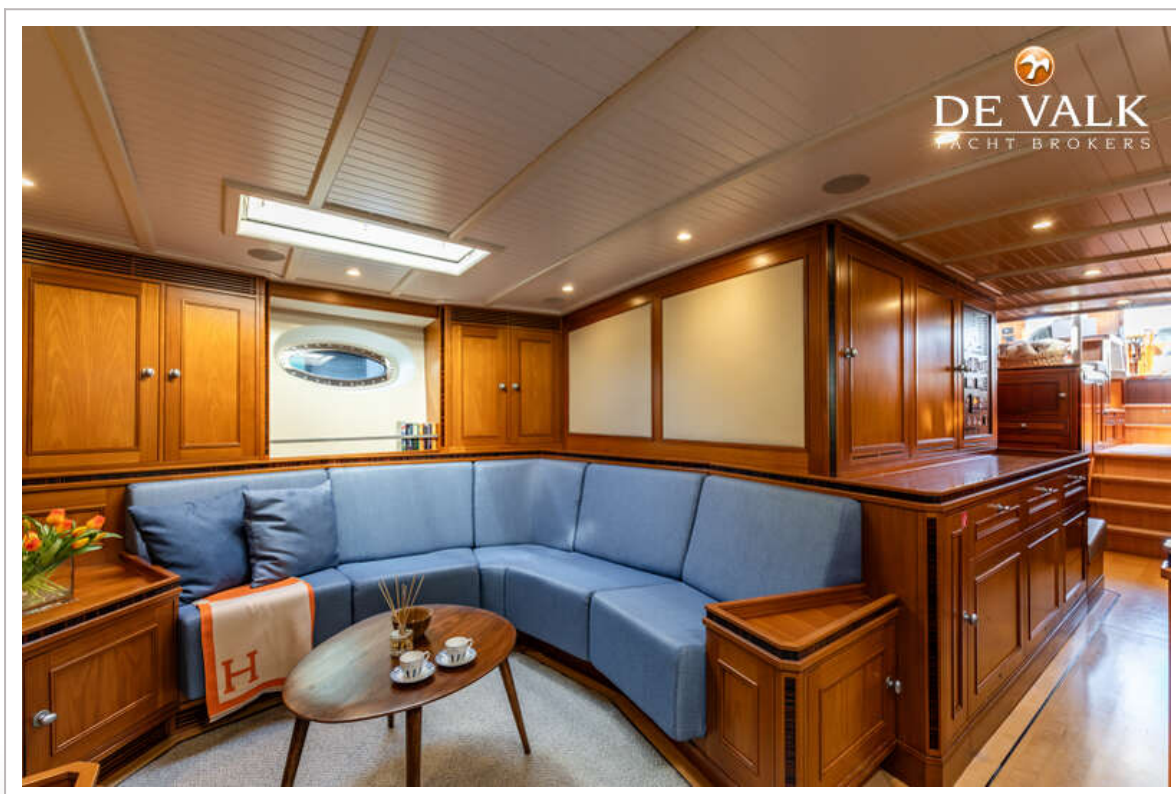
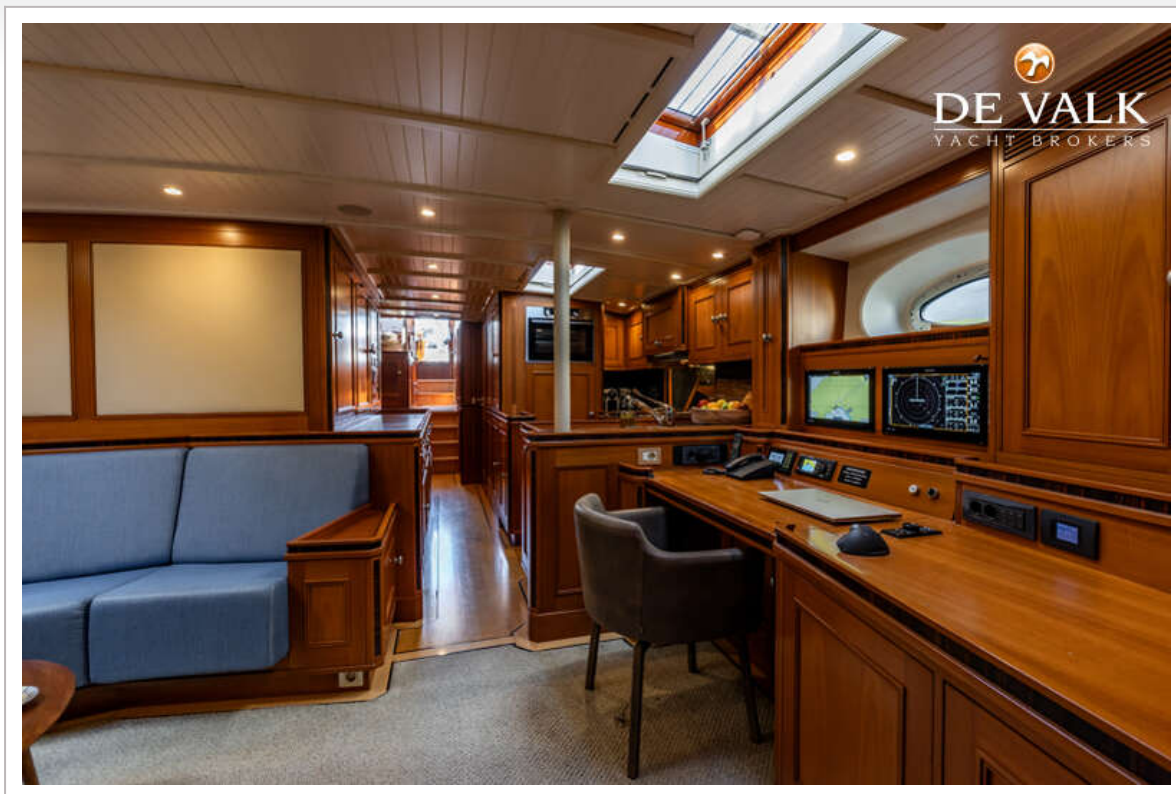






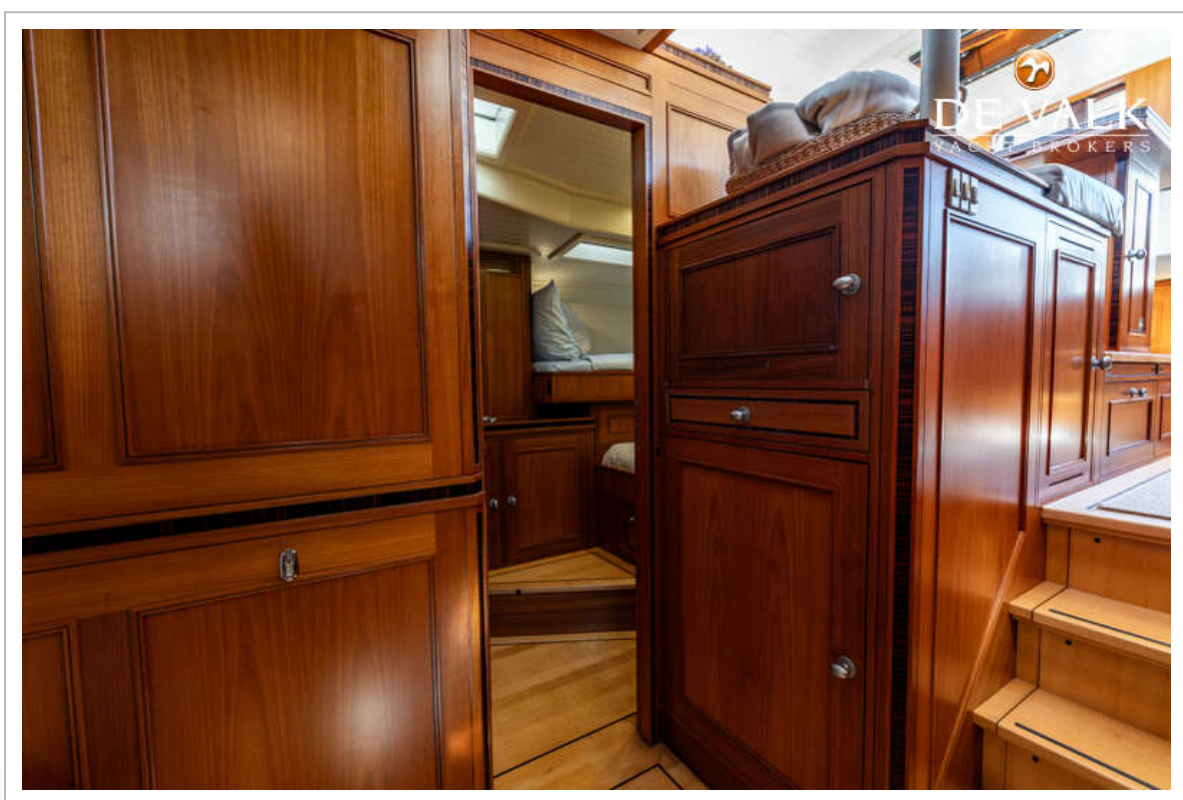
## HOEK DESIGN TRULY CLASSIC 78







# HOEK DESIGN TRULY CLASSIC 78



## HOEK DESIGN TRULY CLASSIC 78

