



DE VALK
YACHT BROKERS



FAIRLINE TARGA 44 GT



DE VALK
YACHT BROKERS

FAIRLINE TARGA 44 GT

BROKER'S COMMENTS

De Fairline Targa 44 GT is a typical Targa. Timeless design, great performance, luxury accomodation and a practical layout. The Targa 44 GT was the first IPS powered Fairline and it set the standard for future IPS powered boats. She comes with two en suite cabins, a very large cockpit, a full grp sliding roof and much more. This particular example of the Fairline Targa 44 GT can be viewed on apointment near the IJsselmeer in the Netherlands. Please contact De Valk Zeeland for details.

Nick Lanting

SPECIFICATIONS

Dimensions	13.68 x 4.01 x 1.00 (m)	Builder	Fairline Boats
Built	2008	Cabins	2
Material	GRP	Berths	5
Engine(s)	2 x Volvo Penta IPS 500 EVC diesel	Hp/Kw	2 x 370.00 (hp), 272.32 (kw)
Asking price	€ 289.000 (VAT Paid)	Lying	elsewhere / Not at sales office

CONTACT

Sales office	De Valk Thuishaven	Telephone	+31 35 5829042
Address	Marinaweg 8 (postal address) 1361 AC Almere NL	E-mail	thuishaven@devalk.nl

DISCLAIMER

These particulars are given in good faith as supplied but cannot be guaranteed.



FAIRLINE TARGA 44 GT

GENERAL

Model	FAIRLINE TARGA 44 GT
Type	motor yacht
LOA (m)	13,68
LWL (m)	10,06
Beam (m)	4,01
Draft (m)	1,00
Air draft (m)	4,02
Headroom (m)	2,00
Year built	2008
Builder	Fairline Boats
Country	United Kingdom
Designer	Bernard Olesinski
Displacement (t)	11,3
CE norm	B
Hull material	GRP
Hull colour	white
Hull shape	deep-V
Superstructure material	GRP
Rubbing strake	stainless steel With rubber insert
Deck material	GRP
Deck finish	non-skid moulded in
Superstructure deck finish	non-skid moulded in
Cockpit deck finish	synthetic teak 2022
Antifouling (year)	2023
Window frame	GRP
Window material	tempered glass
Deckhatch	2 x
Portholes	stainless steel
Radar arch	non collapsible
Fuel tank (litre)	996



FAIRLINE TARGA 44 GT

Level indicator (fuel tank)	yes
Freshwater tank (litre)	320
Level indicator (freshwater)	yes
Blackwater tank (litre)	GRP
Level indicator (blackwater)	yes
Blackwater tank extraction	deck extraction + pump
Outside helm position	powersteer
Emergency tiller	yes
More info on hull	Original gelcoat

ACCOMMODATION

Cabins	2
Berths	5
Interior	cherry American Cherry with Eucalyptus features
Floor	carpet
Open cockpit	yes
Saloon	yes
Headroom saloon (m)	2,00
Sliding roof	electric Inflatable seal not working
Air-conditioning	reverse cycle airco
Sliding door to cockpit	yes
Galley	yes
Countertop	plastic
Sink	stainless steel 2 x
Cooker	electric Force 10 2-burner
Microwave/oven combi	Sharp
Fridge	yes
Hot water system	220V + engine
Water pressure system	electrical
Owners cabin	French bed Forward
Bed length (m)	1,90 x 1,50



FAIRLINE TARGA 44 GT

Wardrobe	hanging/drawers/shelves
Bathroom	en suite
Toilet	In bathroom
Toilet system	electric
Wash basin	in the bathroom
Shower	In bathroom
Guest cabin 1	twin single Aft
Bed length (m)	1,90 x 0,80 (2 x)
Wardrobe	hanging/drawers/shelves
Bathroom	en suite
Toilet	In bathroom
Toilet system	electric
Wash basin	in the bathroom
Shower	In bathroom
Wet bar	In cockpit with sink

MACHINERY

No of engines	2
Make	Volvo Penta
Type	IPS 500 EVC
HP	370
kW	272.32
Fuel	diesel
Year installed	2008
Maximum speed (kn)	30
Cruising speed (kn)	25
Engine hours	1386
Engine cooling system	freshwater heat exchanger
Drive	IPS
Engine controls	electrical
Propeller type	fixed Volvo Penta IPS



FAIRLINE TARGA 44 GT

Manual bilge pump	yes
Electric bilge pump	yes
Bilge alarm	yes
Electrical installation	12 V & 230 V
Generator	Onan
Running hours generator	yes
Batteries	yes
Start battery	2022
Service battery	2022
Generator battery	yes
Battery monitor	yes
Battery charger	yes
Diode battery combiners	yes
Shorepower	with cable
Trimtabs	yes

NAVIGATION

Compass	Danforth
Electric compass	In autopilot
Multi control display	Raymarine i70s (2023)
Depth sounder	yes
Log	yes
VHF	Raymarine Ray 63 (not installed yet)
Autopilot	Raymarine ST6002
Rudder angle indicator	yes
Plotter/GPS	Raymarine Axiom Plus 9 (2023)
Electronic chart(s)	yes
Navigation lights	yes
Searchlight	yes

EQUIPMENT



FAIRLINE TARGA 44 GT

Fixed windscreen	yes
Cockpit cover	yes
Cockpit cushions	Rear seat backrest does not lower anymore
Cockpit table	Teak, foldable
Bathing platform	yes
Boarding ladder	stainless steel
Transom door	yes
Gangway	Besenzoni (removed, so needs re-installation)
Deck shower	yes
Anchor	CQR Plough
Anchor chain	Galvanized
Windlass	electrical
Capstan	On windlass
Dinghy	Ribaa Marine 3.0m + non-braked trailer
Outboard	Hidea 9.9 hp
Sea railing	stainless steel
Grab rail (superstructure)	stainless steel
Pulpit	yes
Lifejackets	yes
Wiper	yes
Horn	electric
Fenders	yes
Mooring lines	yes
TV	In saloon
Radio	yes
Cockpit speakers	yes
Speakers in salon	yes
Fire extinguisher	yes
Latest extinguisher survey	Unknown
Extinguisher in engine room	yes
Auto extinguisher system	yes



FAIRLINE TARGA 44 GT



FAIRLINE TARGA 44 GT



FAIRLINE TARGA 44 GT



FAIRLINE TARGA 44 GT



FAIRLINE TARGA 44 GT



FAIRLINE TARGA 44 GT



FAIRLINE TARGA 44 GT



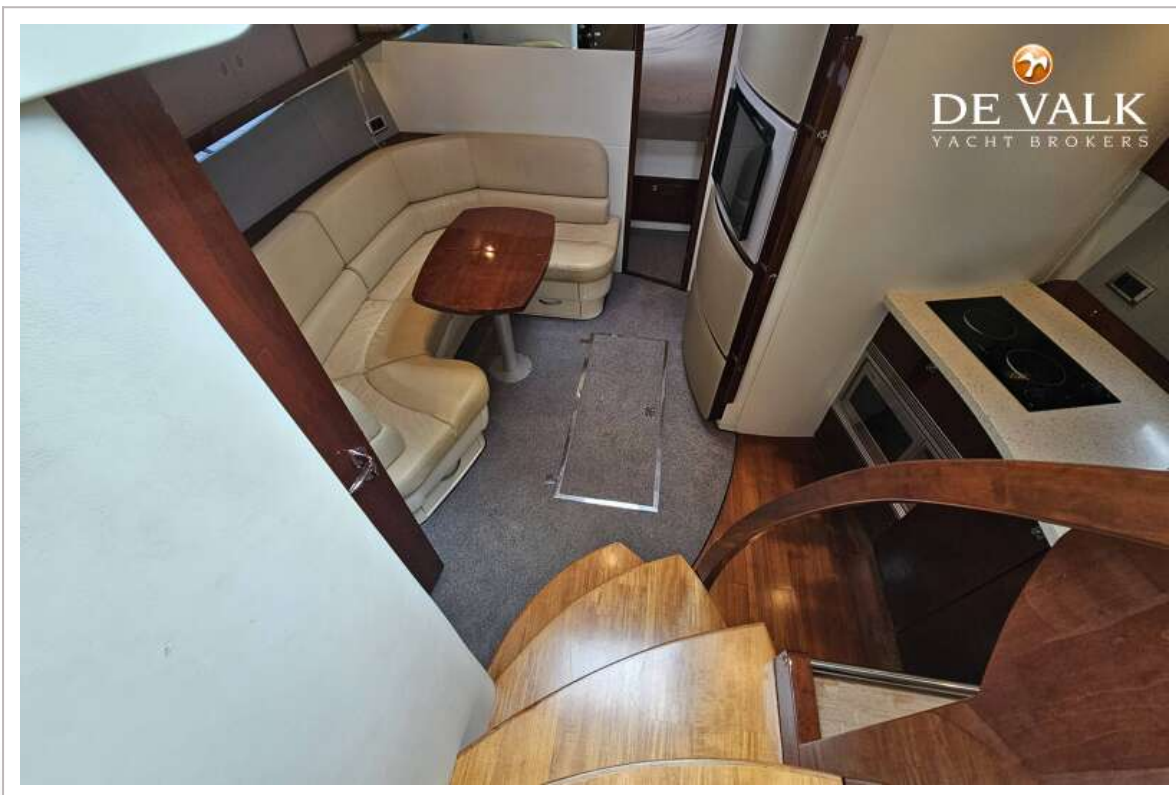
FAIRLINE TARGA 44 GT



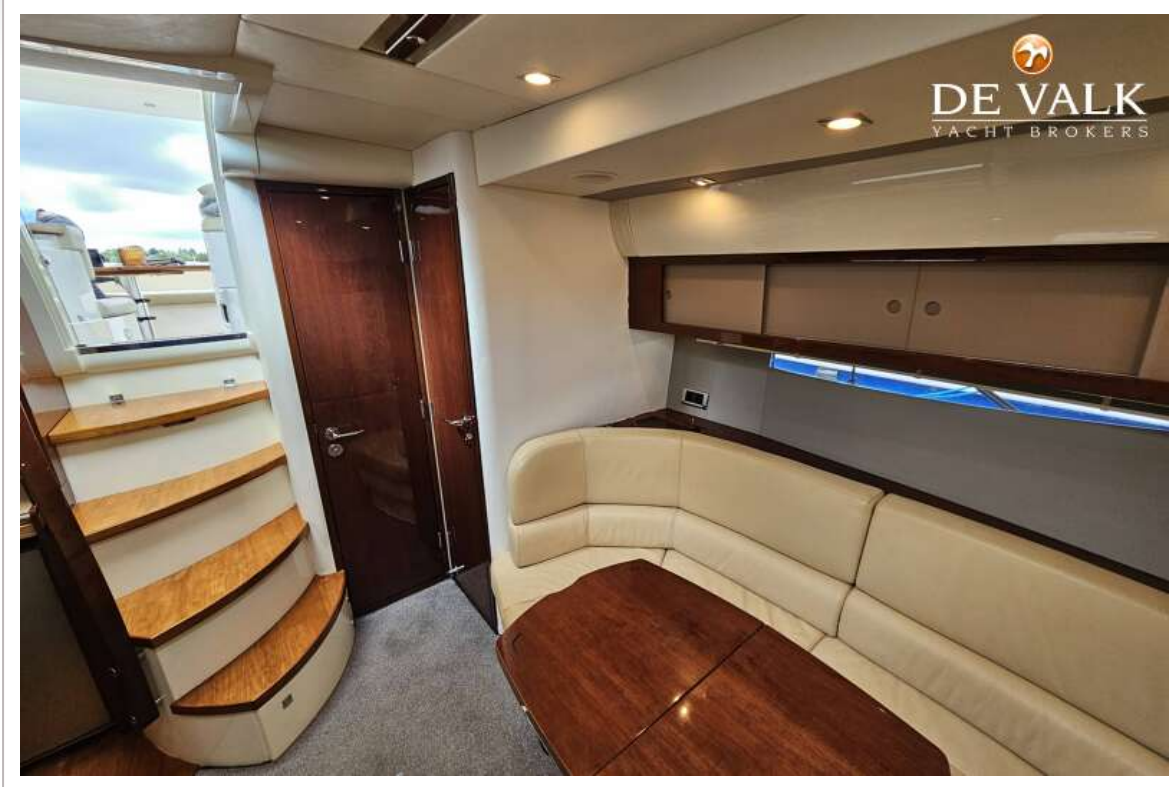
FAIRLINE TARGA 44 GT



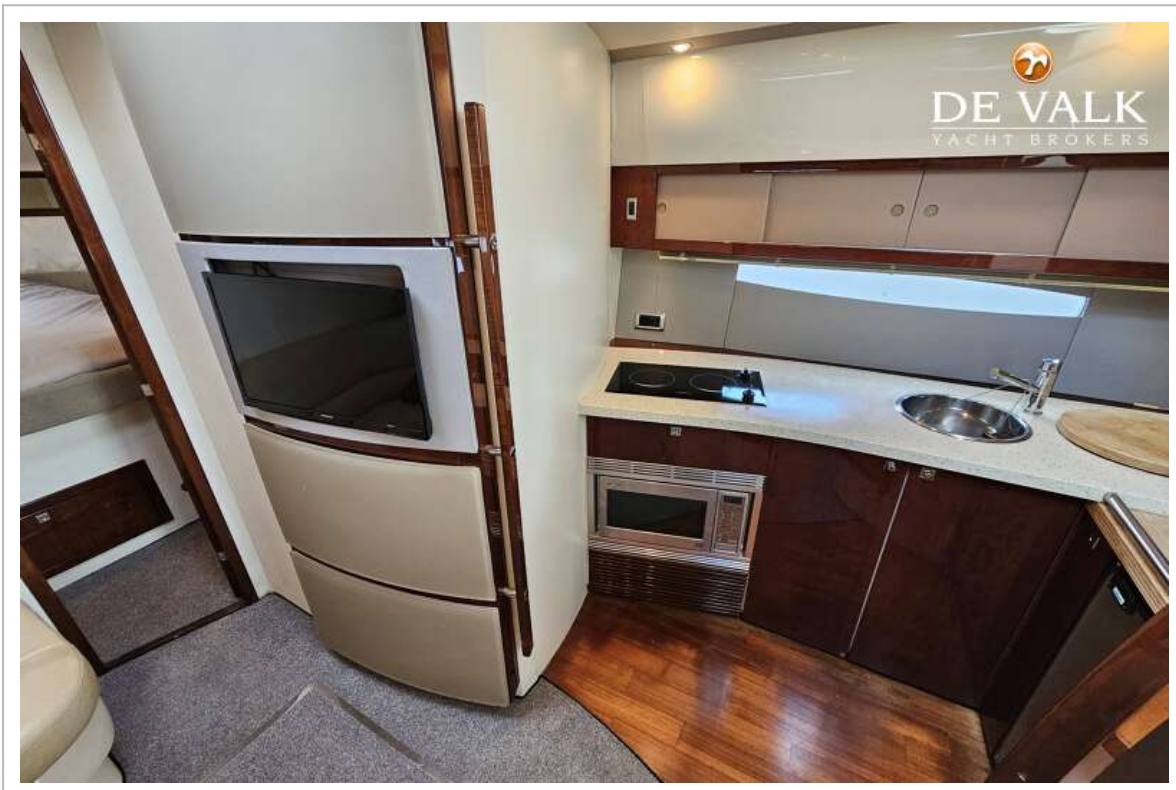
FAIRLINE TARGA 44 GT



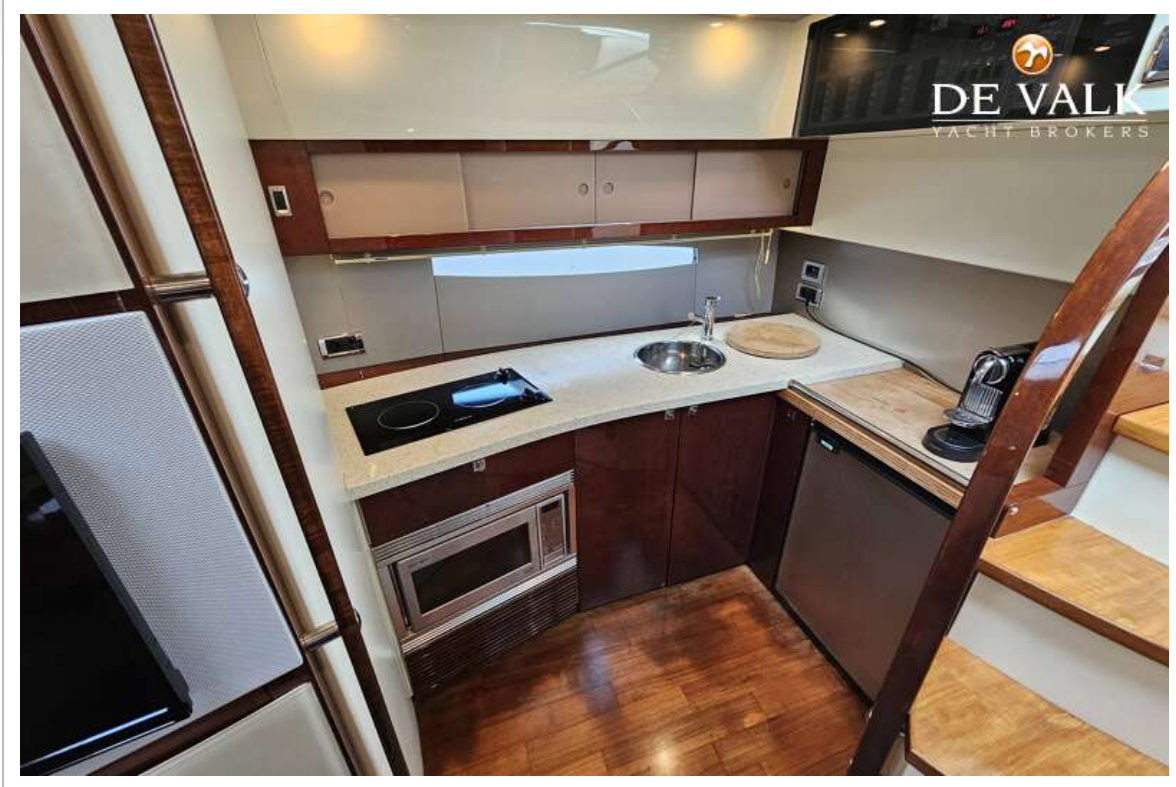
FAIRLINE TARGA 44 GT



FAIRLINE TARGA 44 GT



FAIRLINE TARGA 44 GT



FAIRLINE TARGA 44 GT



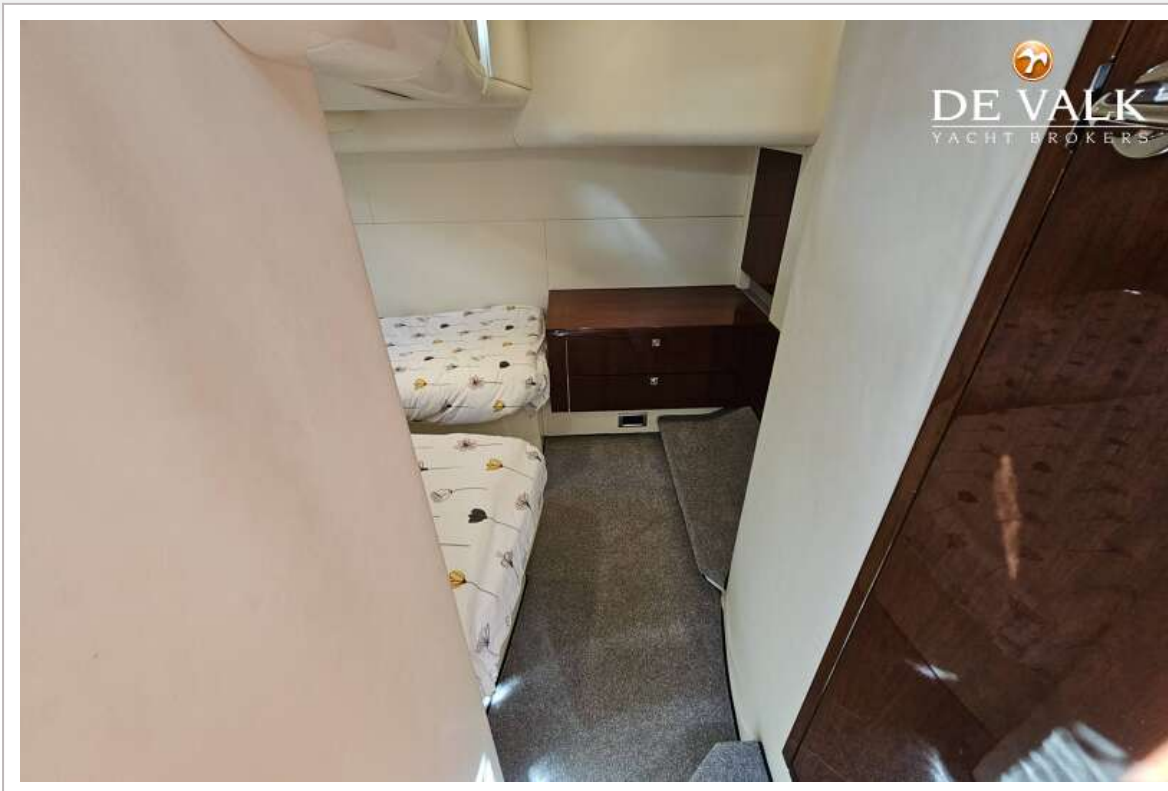
FAIRLINE TARGA 44 GT



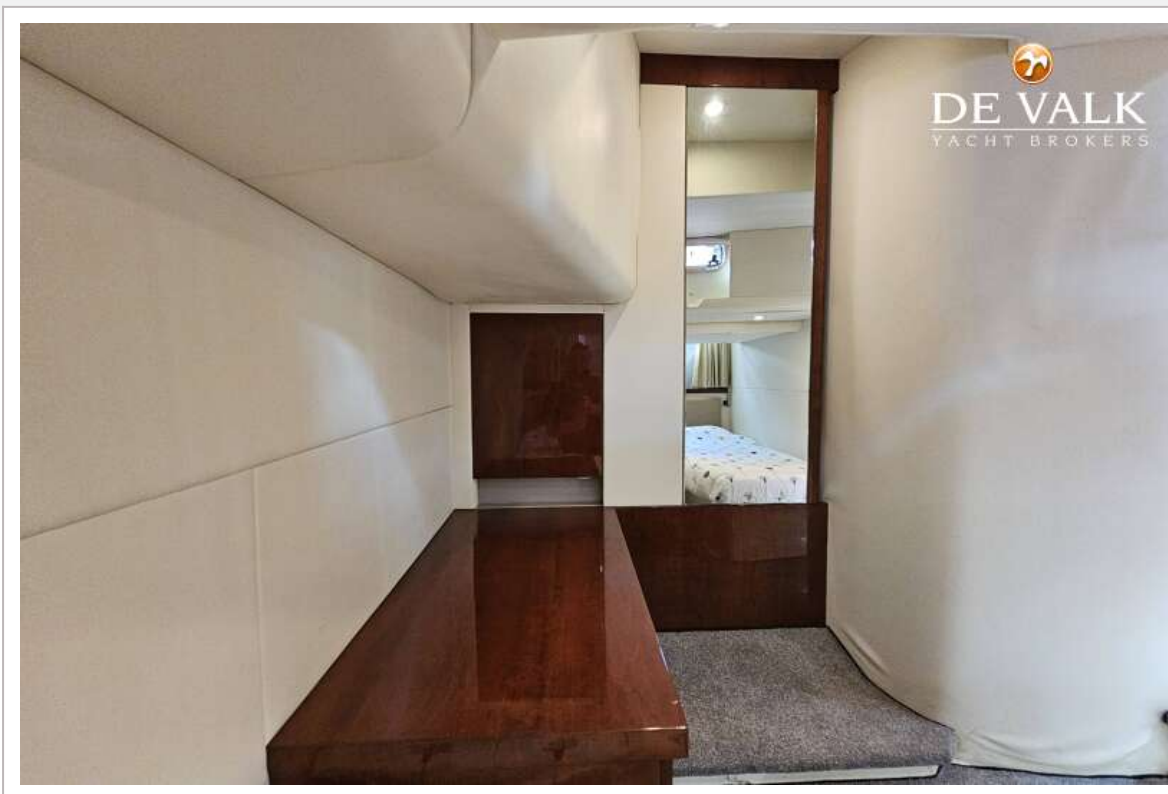
FAIRLINE TARGA 44 GT



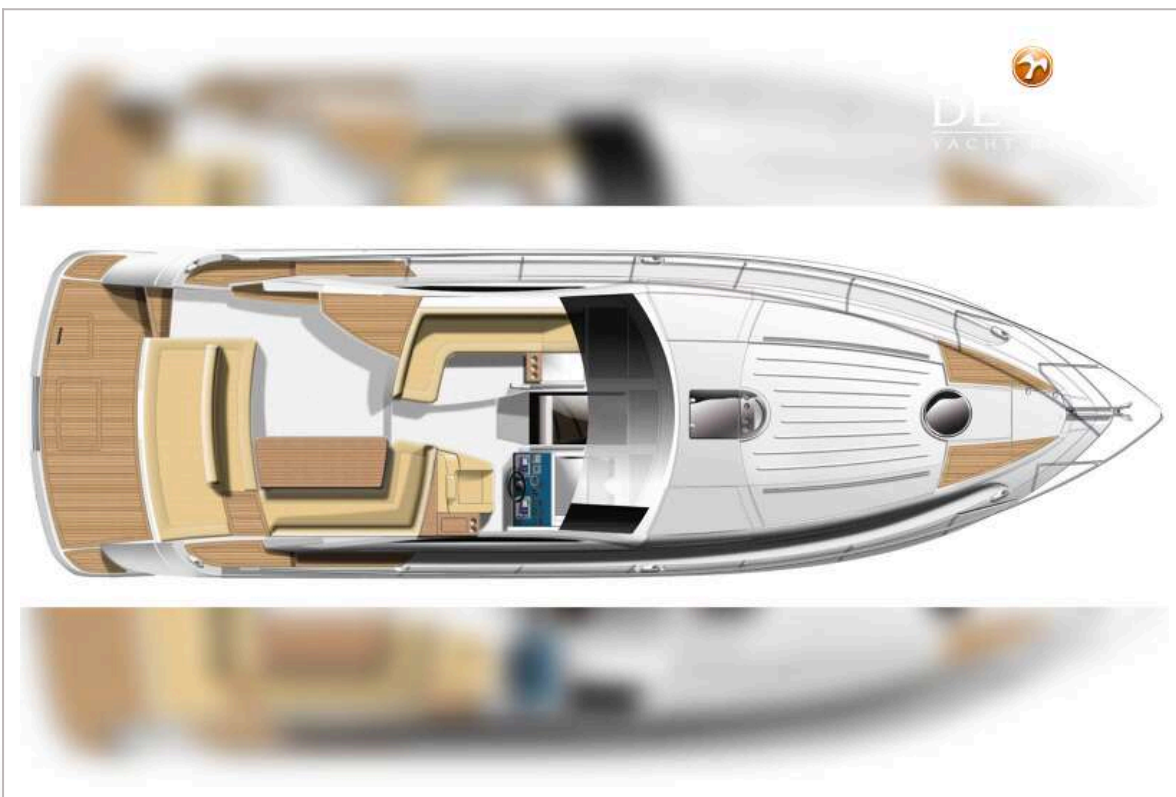
FAIRLINE TARGA 44 GT



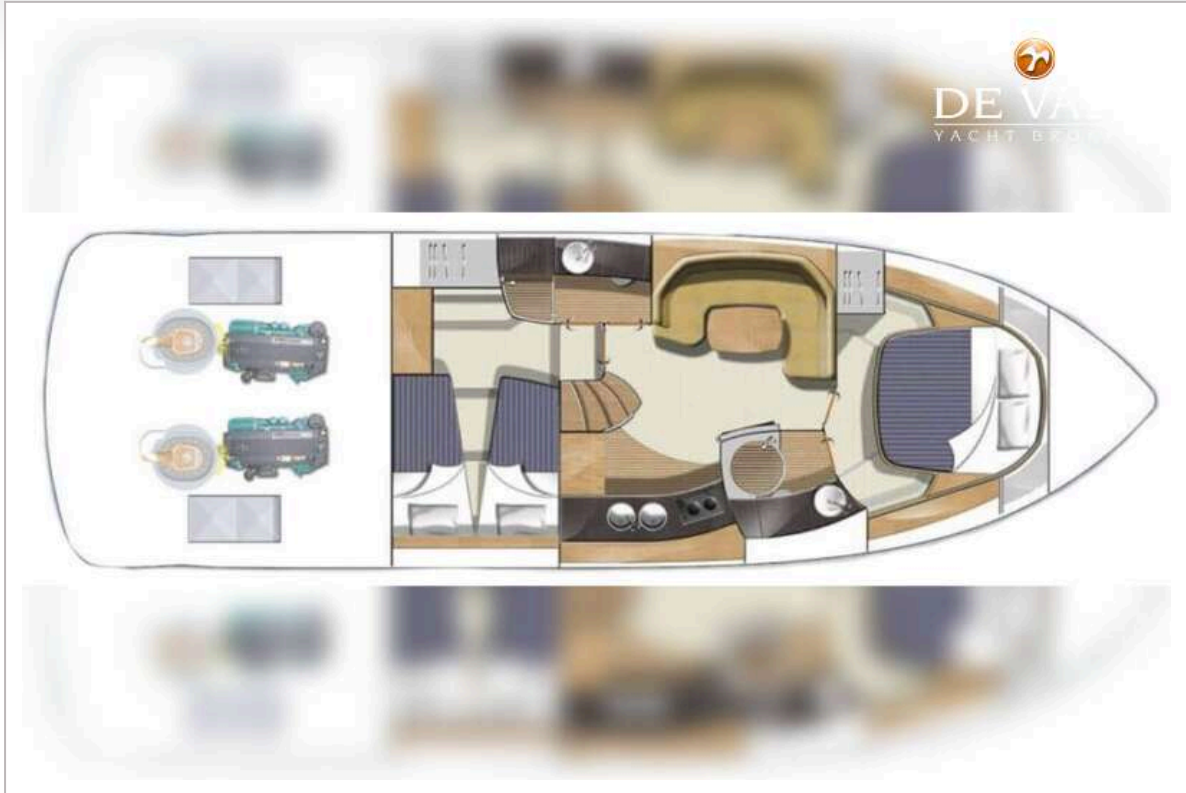
FAIRLINE TARGA 44 GT



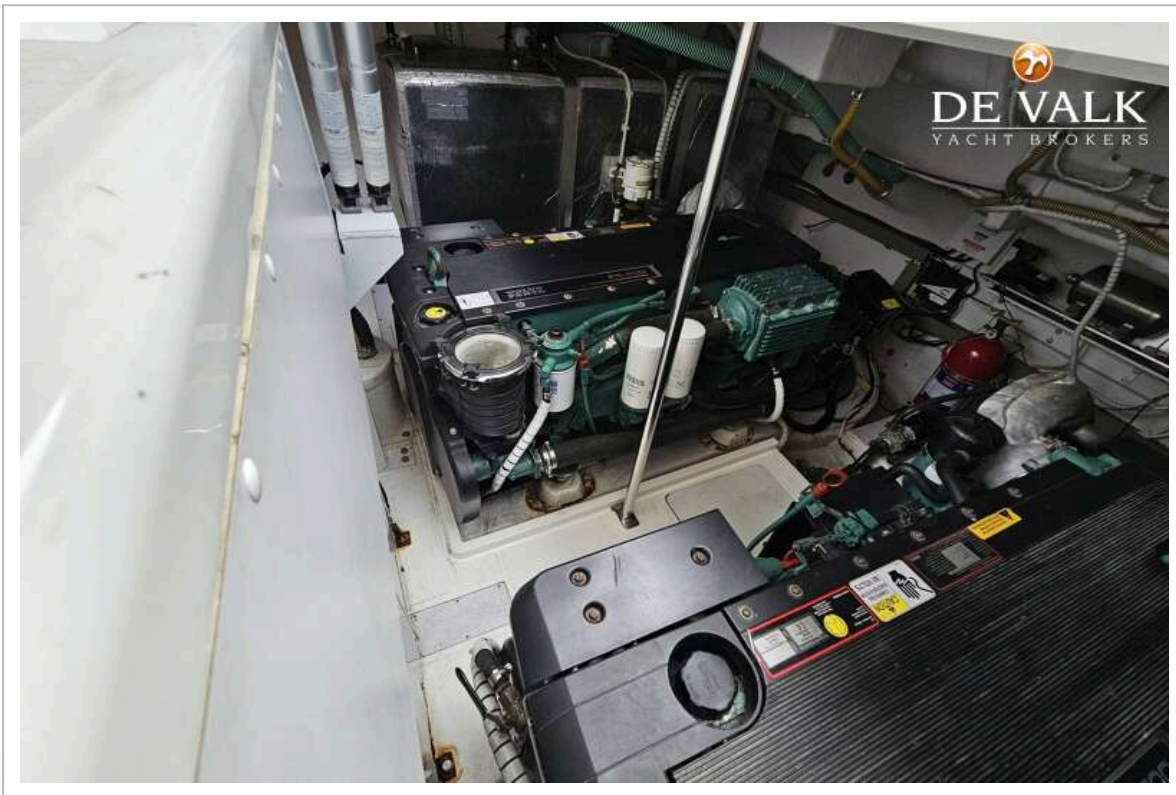
FAIRLINE TARGA 44 GT



FAIRLINE TARGA 44 GT



FAIRLINE TARGA 44 GT



FAIRLINE TARGA 44 GT

