



DE VALK
YACHT BROKERS



PALMER JOHNSON 110



DE VALK
YACHT BROKERS

BROKER'S COMMENTS

Originally named "Nazenin III", the luxury yacht "Keewaydin," translating to "home of the winds" in Native American Indian language, was completed in 1995 by Palmer Johnson. Renowned naval architect John G. Alden crafted her elegant exterior design. Inside, designer John Munford created a timeless ambiance with classic raised wooden panels, adorned with accents of marble. The layout boasts a full-width owner's suite and two guest staterooms, all featuring en-suite facilities. Accommodating up to 6 guests and 5 crew members, Keewaydin ensures a relaxed luxury yacht experience.

Henk Jan Vissia

SPECIFICATIONS

Dimensions	33.50 x 7.16 x 2,60 / 5.55 (m)	Builder	Palmer Johnson Yachts LLC
Built	1995	Cabins	3
Material	Aluminium	Berths	6
Engine(s)	1 x Caterpillar 3408 diesel	Hp/Kw	470.00 (hp), 345.92 (kw)
Asking price	€ 2.950.000 (VAT Paid)	Lying	elsewhere / Not at sales office

CONTACT

Sales office	De Valk Hindeloopen B.V.	Telephone	+31 514 52 40 00
Address	Oosterstrand 1 8713 JS Hindeloopen NL	E-mail	hindeloopen@devalk.nl

DISCLAIMER

These particulars are given in good faith as supplied but cannot be guaranteed.



GENERAL

Model	PALMER JOHNSON 110
Type	sailing yacht
LOA (m)	33,50
LWL (m)	24,50
Beam (m)	7,16
Draft (m)	5,55
Draft min (m)	2,60
Air draft (m)	39,00
Headroom (m)	2,05
Year built	1995
Builder	Palmer Johnson Yachts LLC
Country	U.S.A.
Designer	John G. Alden
Displacement (t)	95
Gross tonnage	114
Net tonnage	34
Hull material	aluminium
Hull colour	Dark Green
Hull shape	S-bilged
Keel type	lifting keel - hydraulic by Holmatro
Superstructure material	Aluminium with teak
Rubbing strake	aluminum
Deck material	aluminium
Deck finish	teak
Antifouling (year)	NRG Marine Sonihull system
Dorades	2
Window frame	aluminium
Window material	double glazing
Deckhatch	3 custom for deck lockers, rest Lewmar
Portholes	aluminium



Fuel tank (litre)	aluminium 11.355
Level indicator (fuel tank)	Maretron DSM410
Freshwater tank (litre)	7.570
Level indicator (freshwater)	Maretron DSM410
Blackwater tank (litre)	2x 3.700
Level indicator (blackwater)	Maretron DSM410
Blackwater tank extraction	deck extraction + pump
Wheel steering	hydraulic
Inside helm position	In pilot house
Emergency tiller	+ wheel steering
More info on paintwork	Last painted 2020
Extra info	Last 4 years major refits, upgrades and renewals.
Extra info	List of works on request.
Extra info	Superb maintenance by very experienced owner

ACCOMMODATION

Cabins	3
Berths	6
Crew cabin	3
Crew berths	5
Interior	teak By John Munford design
Floor	Teak flooring with carpets
Open cockpit	With U-shaped settee just aft the pilot house
Aft deck	With storage for the dinghy
Pilot house	Aft from the main saloon with centre wheel position and settees
Saloon	Above engine room with settees and dining table
Headroom saloon (m)	Approx. 2.05 metres
Heating	Electric heating
Air-conditioning	reverse cycle airco
Navigation center	In pilot house as well as in owners office
Chart table	In pilot house



Sliding door to cockpit	yes
Galley	In crew area outfitted to prepare meals at sea or in harbour
Countertop	corian
Sink	stainless steel
Cooker	induction Gaggenau
Oven	Miele
Extractor	Miele
Microwave	Magic Chef
Fridge	Double
Freezer	Double
Hot water system	220V + engine 2x 150 litre boiler
Water pressure system	electrical 24 and 220V
Hot water tap	yes
Ice maker	In saloon
Waste compactor	/mascerator in sink
Owners cabin	double bed + single bed Comfortably equipped with settee
Bed length (m)	2.00 x 1.40 m. and 2.00 x 0.80 m.
Wardrobe	Several wardrobes with ample hanging, cabinets and drawers
Bathroom	en suite
Toilet	en suite
Toilet system	vacuum
Wash basin	in the bathroom
Shower	en suite
Extra info	Bidet in en suite bathroom
Guest cabin 1	twin single
Bed length (m)	2.00 x 0.75 m.
Wardrobe	With ample hanging and drawers
Bathroom	en suite
Toilet	en suite
Toilet system	vacuum
Wash basin	in the bathroom
Shower	en suite



Guest cabin 2	twin single
Bed length (m)	2.00 x 0.75 m.
Wardrobe	With ample hanging and drawers
Bathroom	en suite
Toilet	en suite
Toilet system	vacuum
Wash basin	in the bathroom
Shower	en suite
Toilet	Day head on port side of guest corridor
Toilet system	vacuum
Wash basin	at the toilet
Extra info	Owners office near master bedroom equiped with nav. instruments
Crew cabin(s)	3 crew cabins, sleeps 5, cap's has small double, rest bunk beds
Bathroom (crew)	Cap's en suite, rest is shared
Toilet (crew)	In bathroom
Toilet system	vacuum
Wash basin	in the bathroom
Shower (crew)	In the bathroom
Extra info	Cosy messroom equiped with back-up navigation systems
Washing machine	Miele Softtronic W5825
Dryer	Miele professional PT7135 C Vario
Central vacuum cleaner	yes
Extra info	Wine lockers in saloon integrated in the interior

MACHINERY

No of engines	1
Make	Caterpillar
Type	3408
HP	470
kW	345.92



Fuel	diesel
Year installed	1995
Maximum speed (kn)	11
Cruising speed (kn)	9
Consumption (l/hr)	28
Range (nm)	3000
Engine hours	9153
Engine cooling system	freshwater heat exchanger
Drive	shaft
Engine controls	electrical Dockmate remote system with bow and stern thruster operation
Gearbox	hydraulic Reintjes type WAF 242
Bowthruster	hydraulic 2x Hydropower driven of either of PTO NL generators
Sternthruster	hydraulic 1x Hydropower driven of either of PTO NL generators
Exhaust	watercooled
Propeller type	feathering Hundested variable pitch with Spurs line cutter on shaft
Propeller blades	4
Propeller shaft material	stainless steel
Shaft lubrication	grease
Electric bilge pump	Flomax 4.5hp AC pump, 3x PAR AC pumps
Bilge alarm	High water bilge alarms 5x
Electrical installation	AC 230V, single phase 60Hz, DC 12/24 V users (AC 110V)
Generator	2x Northern Light 55 kVa, SB side overhaul 2015, service '23
Running hours generator	11-04-2024: PS 3.579hrs; SB 21.948hrs
Generator 2	Fisher Panda; 15000i 15kVa, installed 2023
Running hours generator 2	11-04-2023: 221hrs
Batteries	2023: 12x 220Ah; 12V
Start battery	2023: 2x 220Ah; 12V
Navigation Battery	2023: 2x 220Ah; 12V
Generator battery	2023: 2x 220Ah; 12V
Battery monitor	Several



Battery charger	Several Mastervolt and Victron
Inverter	2x ASEA 12 Kva shore power converters
Shorepower	100 amp inlet aft; Hubble cords and plugs
Insulation transformer	yes
Watermaker	2x Sea Recovery 1200 US gallons per day (reverse osmosis treat.)
Extra info	Holmatro centreboard lift with electric/hydraulic drive
Extra info	Lewmar Commander hydraulic packs (2) for rig and winch systems
Extra info	HPS hydraulic PTO each generator for windlass and thrusters

NAVIGATION

Compass	Danforth liquid Compass
Electric compass	Furuno Satellite GPS gyrocompass
Multi control display	Maretron DSM 410 level indicators
Depth sounder	Furuno F1-150
Windset	B&G Hercules 2000 MFD wind/speed/direction
Repeater	Several in office, cockpit, cap's cabin and mess
VHF	1x Icom ICM330, 2x Icom 502
VHF handheld	2x
Autopilot	Furuno Nav-Pilot (revised 2017) + Simrad back-up
Rudder angle indicator	yes
Radar	Furuno 96 mile with AIS
GPS	Furuno Nav net GPS, 3D GPS (cap's cabin)
Plotter	Via computer systems
Weather receiver	yes
Personal computer	4x 15" Nauticomp (Pilothouse); 1x 15" in office, 1x flat. mess
EPIRB	2x 406 Epirb
Personal MOB transmitter	yes
Camera	2x Raymarine FLIR
Navigation lights	yes
Searchlight	yes



Loudhailer	yes
Extra info	KVH V7 Tracphone SATCOM; FB 250 receiver Panasonic PABX phone
Extra info	Furuno FS 5000 SSB; C-7280 telefax; Iridium+Starlink+Fleet one

EQUIPMENT

Storm blinds	yes
Sun awning	yes
Window cover	yes
Cockpit cushions	2015
Cockpit table	Teak offering lots of space
Cockpit chairs	2
Boarding ladder	Manually operated, stainless steel with teak
Gangway	Hydraulic custom made
Anchor	CQR Lough Stainless steel
Anchor chain	Galvanized
Anchor 2	Rocna Stainless steel
Anchor chain	Galvanized
Capstan	2x Lewmar 6000
Dinghy	Williams Sportjet 460; year 2021
Deck crane	Via Mizzen boom
Sea railing	wire
Grab rail (superstructure)	teak
Pushpit	Stainless Steel
Pulpit	Stainless Steel
Life raft (pers)	2x 6 persons
Last life raft survey	01-2024
Lifejackets	yes
Rope cutter	yes
Wiper	4x
Window ventilator	yes



Horn	yes
Fenders	yes
Mooring lines	yes
Spare parts	yes
Tools	yes
TV	2023
TV receiver	yes
Satellite	yes
Radio	yes
DVD player	yes
Clock - barometer	yes
Fire extinguisher	yes
Extinguisher in engine room	yes
Auto extinguisher system	yes
Extra info	Bauer dive compressor with two diving cylinders

RIGGING

Rigging	ketch-cutter
Standing rigging	Rod By BSI
Brand mast	Offshore Spars
Material mast	aluminium coated
Spreaders	Mast 3x, mizzen mast 2x
Keel stepped mast	yes
Mainsail	North Sails, 2020, 180m2 plus spare 2023
Stoway mast	yes
Cutterstay	yes
Mizzen	North Sails, 2020, 70m2
Mizzen staysail	Gennaker Doyle, 2008, 162m2
Genoa furler	Reckmann, serviced 2020
Cutter furler	Reckmann, serviced 2020
Code Zero	Dustom Sails Croatia, 2022, 372m2 with heavy-duty Karver furler



Gennaker	Doyle, 2008, 469m2
Staysail	North Sails, 2020, 77m2
Yankee	North Sails 2020, 182m2
Stormjib	Doyle
Reefing System	main in-mast furling Hood, serviced 2020
Backstay adjuster	hydraulic
Boomvang	hydraulic Holmatro
Primary sheet winch	2x Lewmar 111, hydraulic, 3 speed
Secondary sheet winch	2x Lewmar 77, hydraulic, 3 speed
Genoa sheetwinches	2x Lewmar 62 for Mizzen outhaul and sheet
Halyard winches	4x 77 Lewmar, hydraulic, 2 speed
Multifunctional winches	2x 62 Lewmar for Mizzen and staysail halyard, 1x 62 Pole lift
Winchcovers	yes
Gennaker pole	carbon
Extra info	Carbon fibre booms for main mast and mizzen by Offshore Spars
Extra info	Mast and rigging pulled 2020. All North Sails are 3Di type



PALMER JOHNSON 110



PALMER JOHNSON 110



PALMER JOHNSON 110





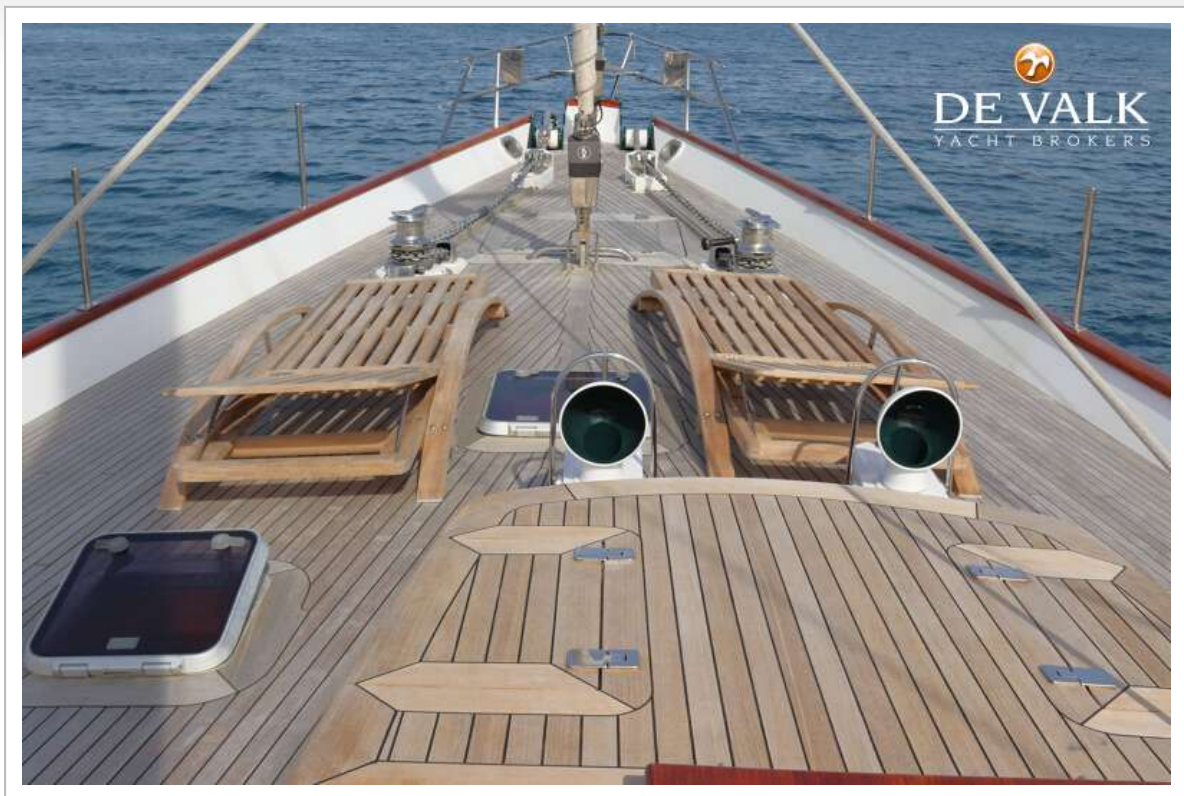
PALMER JOHNSON 110



PALMER JOHNSON 110



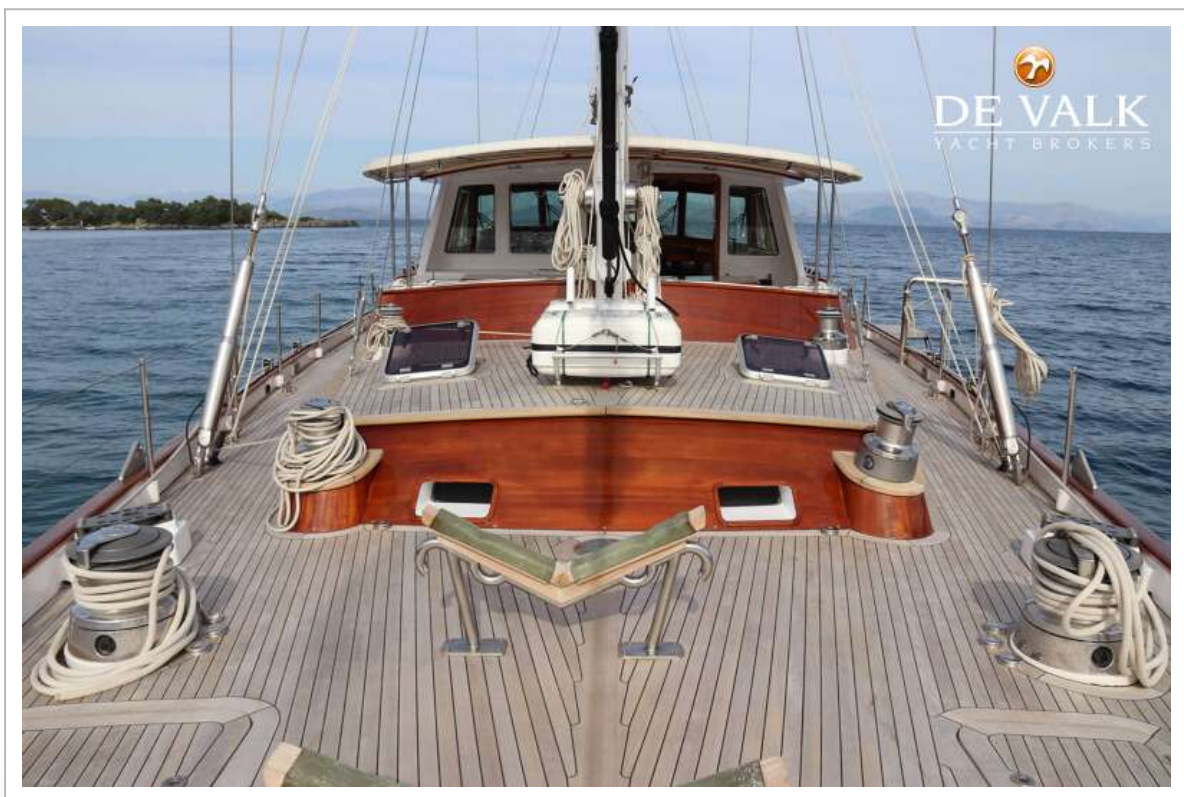
PALMER JOHNSON 110



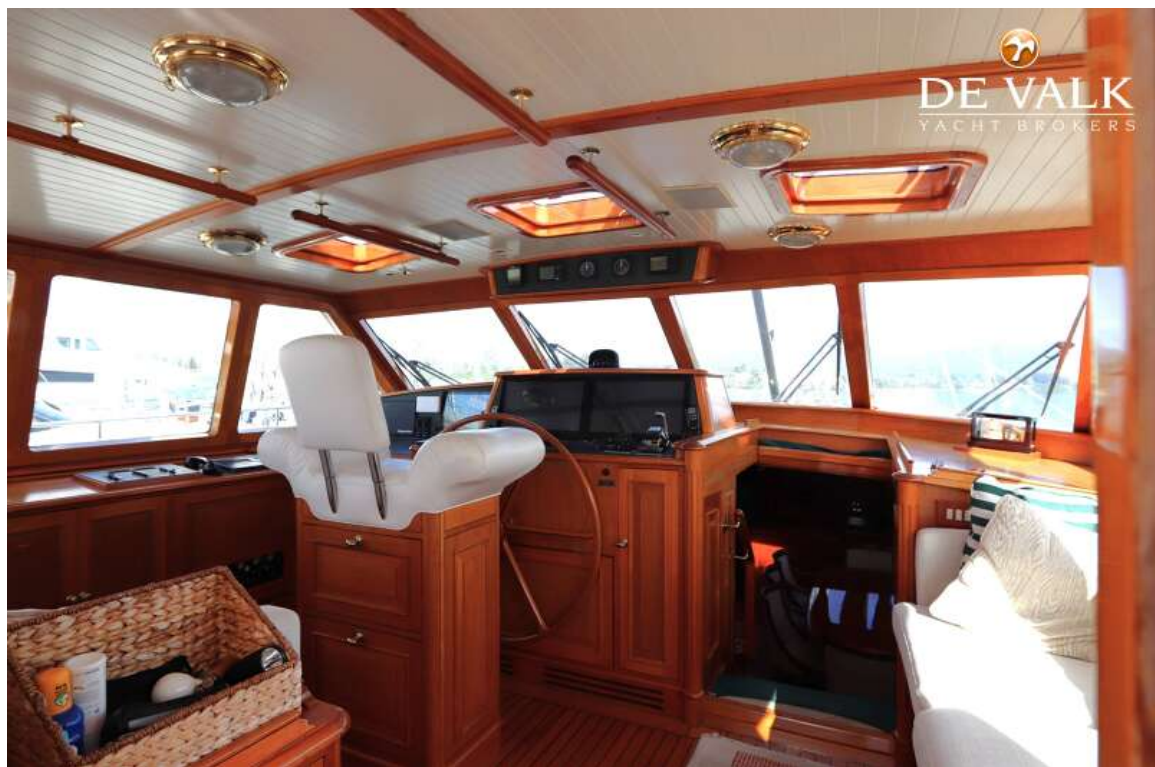
PALMER JOHNSON 110



PALMER JOHNSON 110



PALMER JOHNSON 110



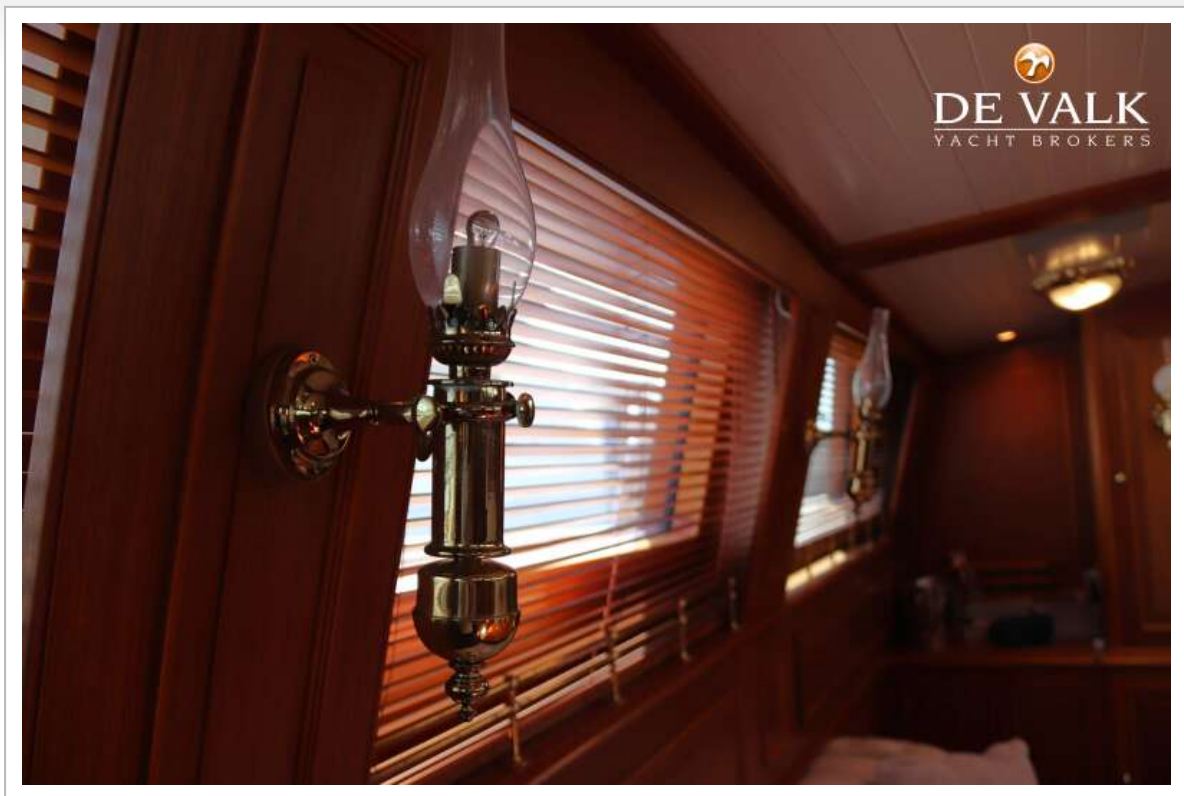
PALMER JOHNSON 110



PALMER JOHNSON 110



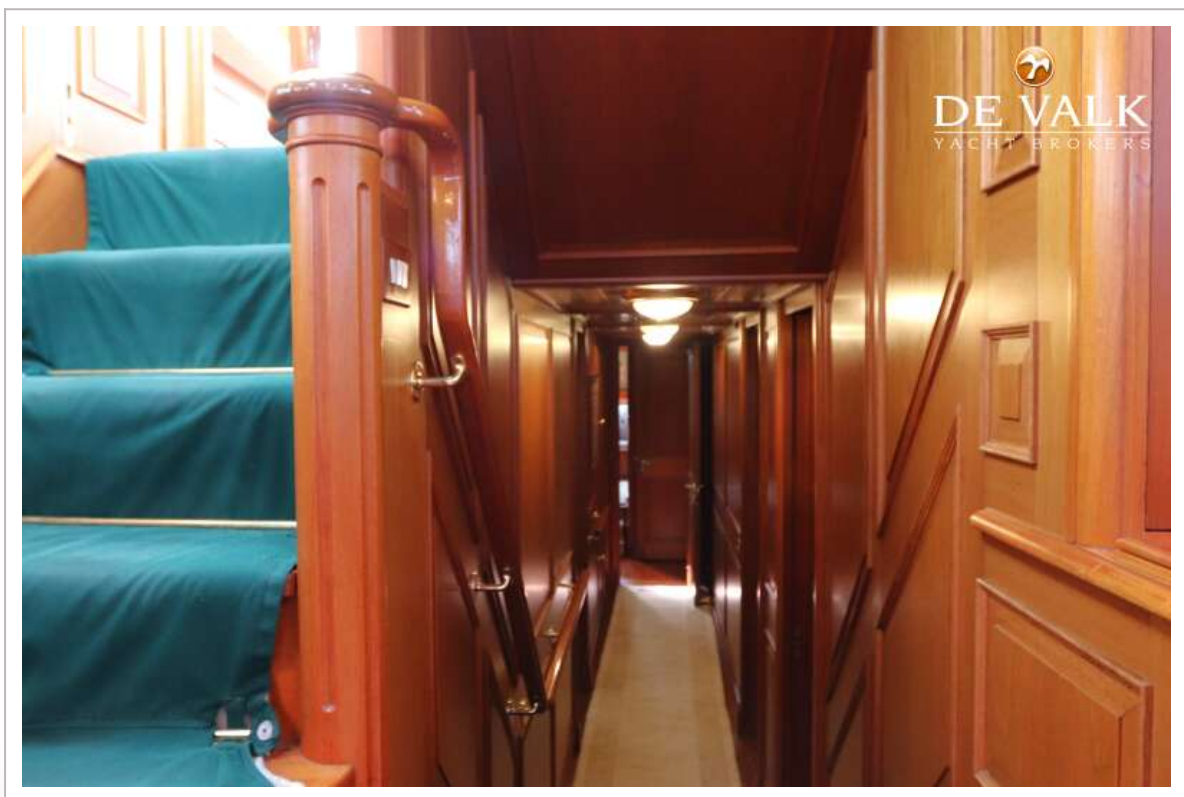
PALMER JOHNSON 110



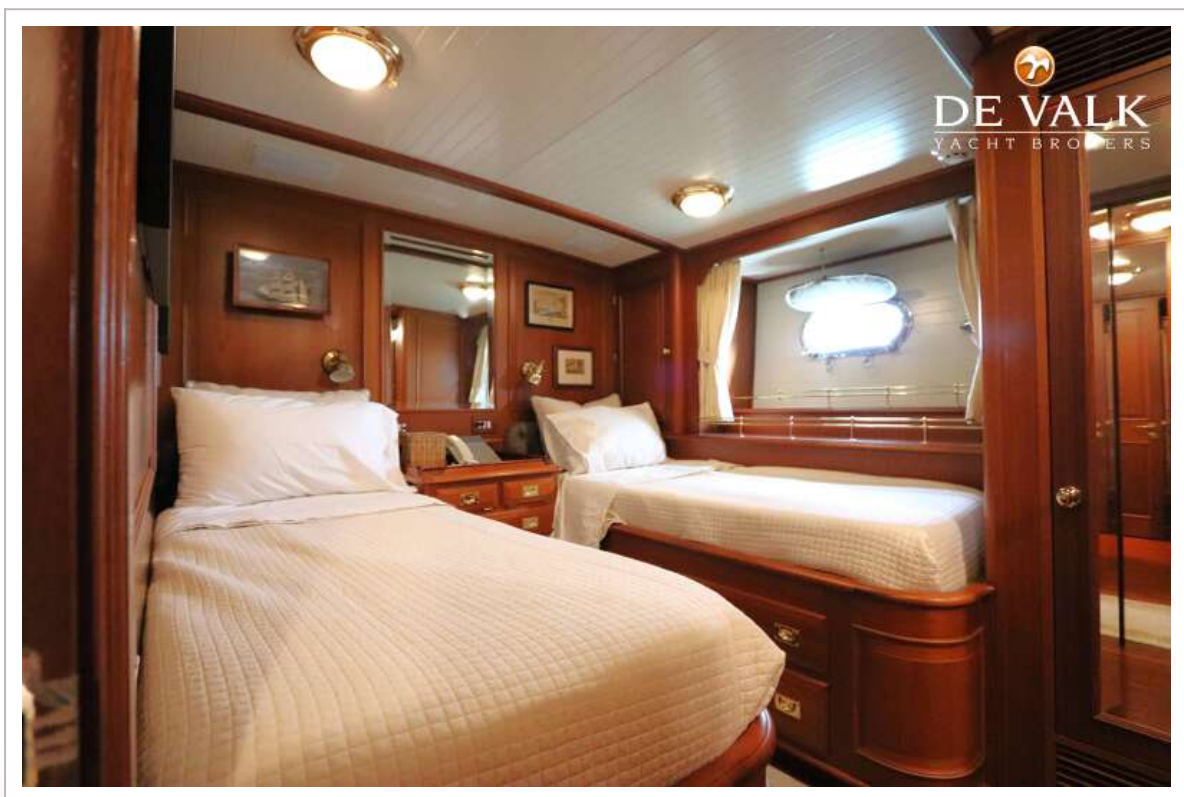
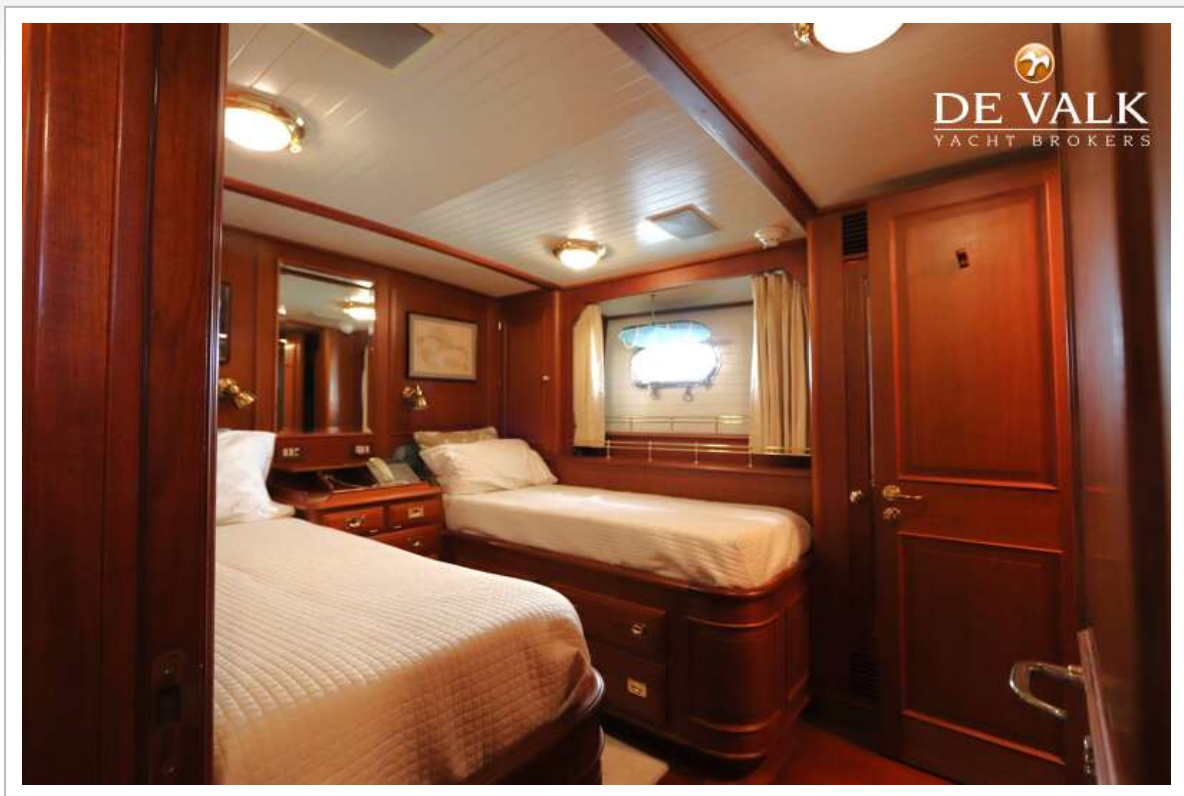
PALMER JOHNSON 110



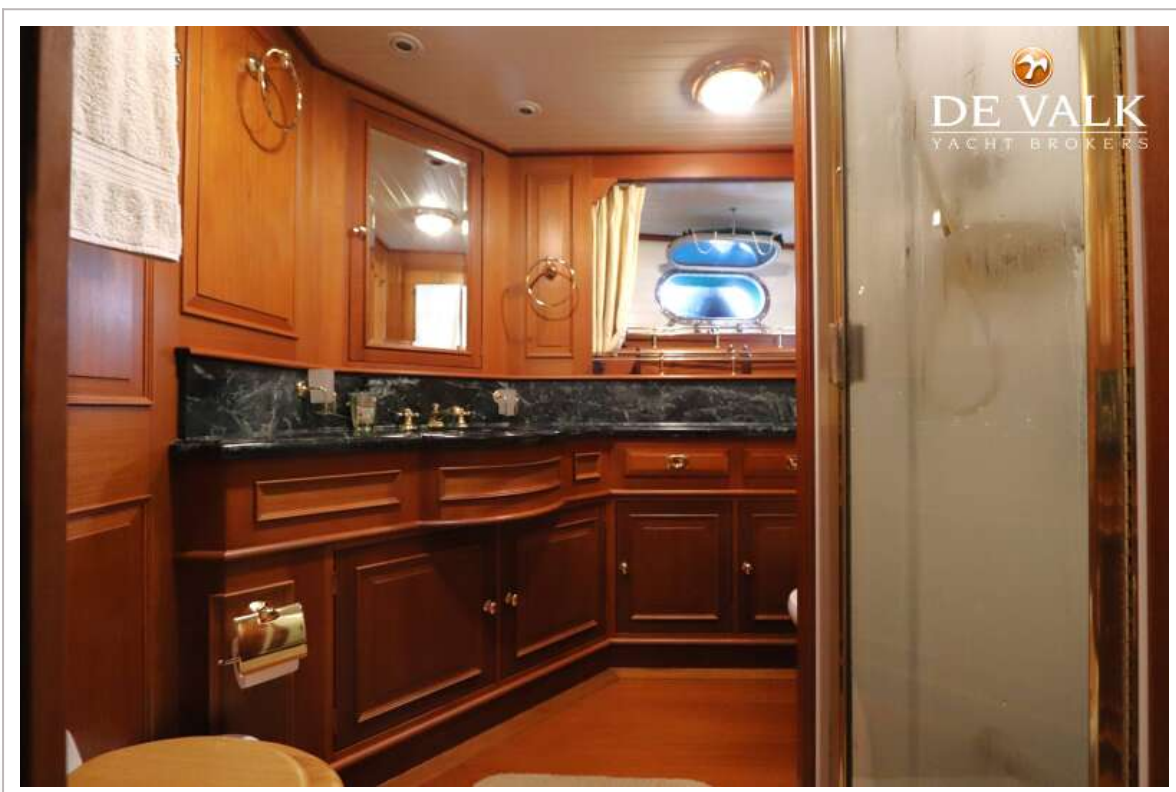
PALMER JOHNSON 110



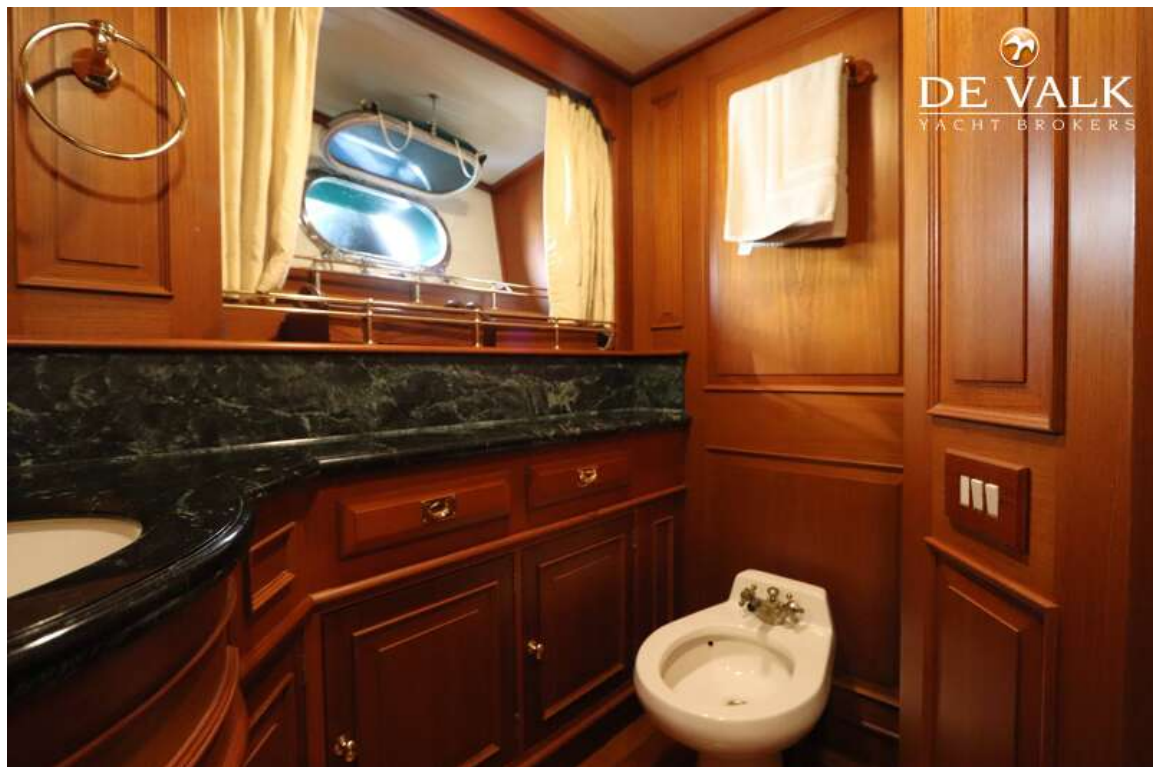
PALMER JOHNSON 110



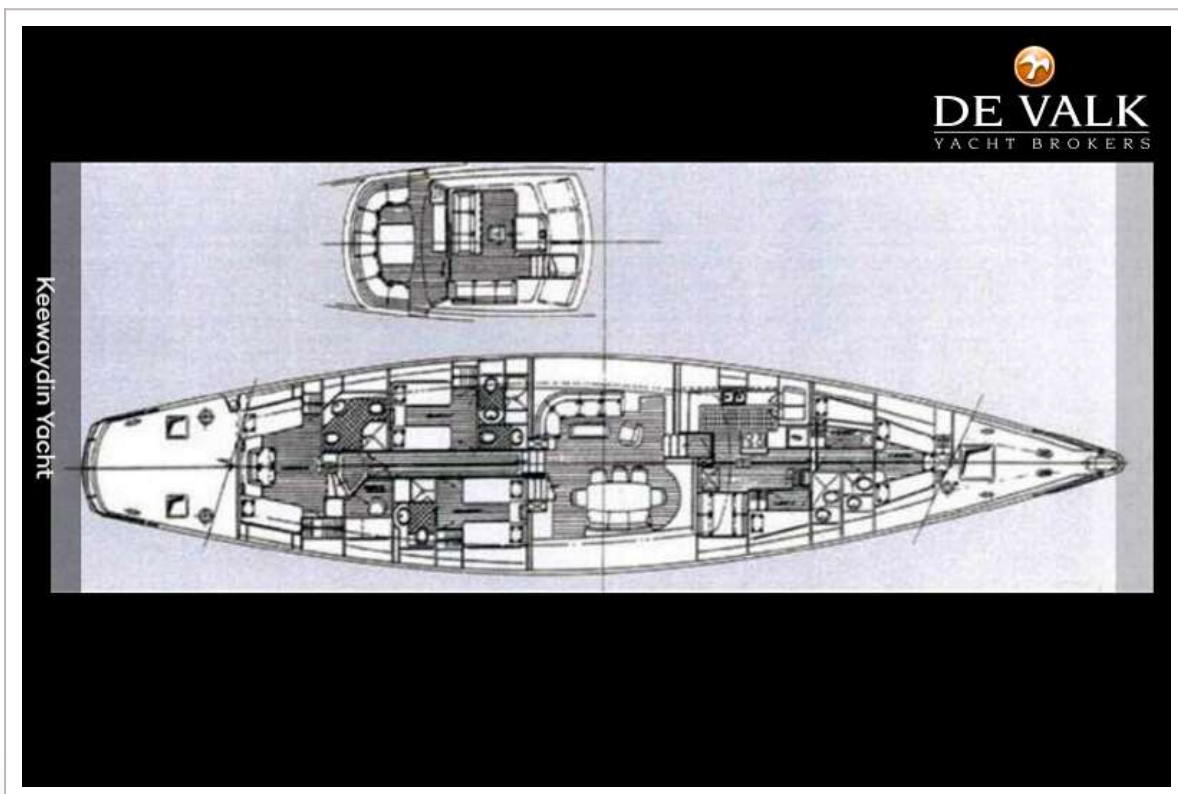
PALMER JOHNSON 110



PALMER JOHNSON 110



PALMER JOHNSON 110



PALMER JOHNSON 110



PALMER JOHNSON 110



