



DE VALK
YACHT BROKERS



ROYAL HUISMAN SLOOP



DE VALK
YACHT BROKERS

ROYAL HUISMAN SLOOP

BROKER'S COMMENTS

The project, "Belle Fontaine", formerly known as "Black Shark of St. Peter" can be considered as a sistership of the legendary "Flyer II". Her current owner started with an extensive refit partially carried out at the Royal Huisman refit facilities in Zaandam. Large parts of the interior have been removed as also a part of the insulation. After a fresh coat of paint in 2023 the owner ran out of time due to obligations to other projects. Therefore, she is now for sale. Mast and rigging are available.

Hans Visser

SPECIFICATIONS

Dimensions	24.68 x 6.11 x 3.96 (m)	Builder	Royal Huisman
Built	1982	Cabins	3
Material	Aluminium	Berths	6
Engine(s)	x	Hp/Kw	0.00 (hp), 0.00 (kw)
Asking price	sold (VAT)	Lying	contact sales office

CONTACT

Sales office	De Valk Hindeloopen B.V.	Telephone	+31 514 52 40 00
Address	Oosterstrand 1 8713 JS Hindeloopen NL	E-mail	hindeloopen@devalk.nl

DISCLAIMER

These particulars are given in good faith as supplied but cannot be guaranteed.



ROYAL HUISMAN SLOOP

GENERAL

Model	ROYAL HUISMAN SLOOP
Type	sailing yacht
LOA (m)	24,68
LWL (m)	19,80
Beam (m)	6,11
Draft (m)	3,96
Air draft (m)	31,00
Year built	1982
Builder	Royal Huisman
Country	The Netherlands
Designer	German Frers
Displacement (t)	55
Gross tonnage	63
CE norm	NA
Hull material	aluminium
Hull colour	White
Hull shape	round-bilged
Keel type	fin keel
Superstructure material	aluminium
Deck material	aluminium
Deck finish	non-skid paint
Cockpit deck finish	teak
Antifouling (year)	2023
Deckhatch	Lewmar and Ronstan
Fuel tank (litre)	2500
Freshwater tank (litre)	2500
Blackwater tank (litre)	Unknown
Greywater tank (litre)	Unknown
Wheel steering	yes
More info on paintwork	Complete paintjob 2023



ROYAL HUISMAN SLOOP

Extra info

Unfinished project with high potential

ACCOMMODATION

Cabins	3
Berths	6
Crew cabin	1
Crew berths	3
Interior	Pieter Beeldsnijder Design; partially removed
Floor	wood
Navigation center	Without instruments
Chart table	yes
Galley	Partially removed
Owners cabin	1 Owners cabin with 2 single beds
Guest cabin 1	2 Guest cabins with bunk beds
Crew cabin(s)	Removed

MACHINERY

Maximum speed (kn)	11
Cruising speed (kn)	9
Range (nm)	900
Drive	V-drive
Bowthruster	Hydraulic, not connected
Manual bilge pump	In engine room
Electric bilge pump	Not connected
Electrical installation	12/24 and 230 Volt. Not connected

NAVIGATION

Compass	2 standard compasses near the cockpit
---------	---------------------------------------

EQUIPMENT



ROYAL HUISMAN SLOOP

Capstan

Lewmar electric, not connected

RIGGING

Rigging

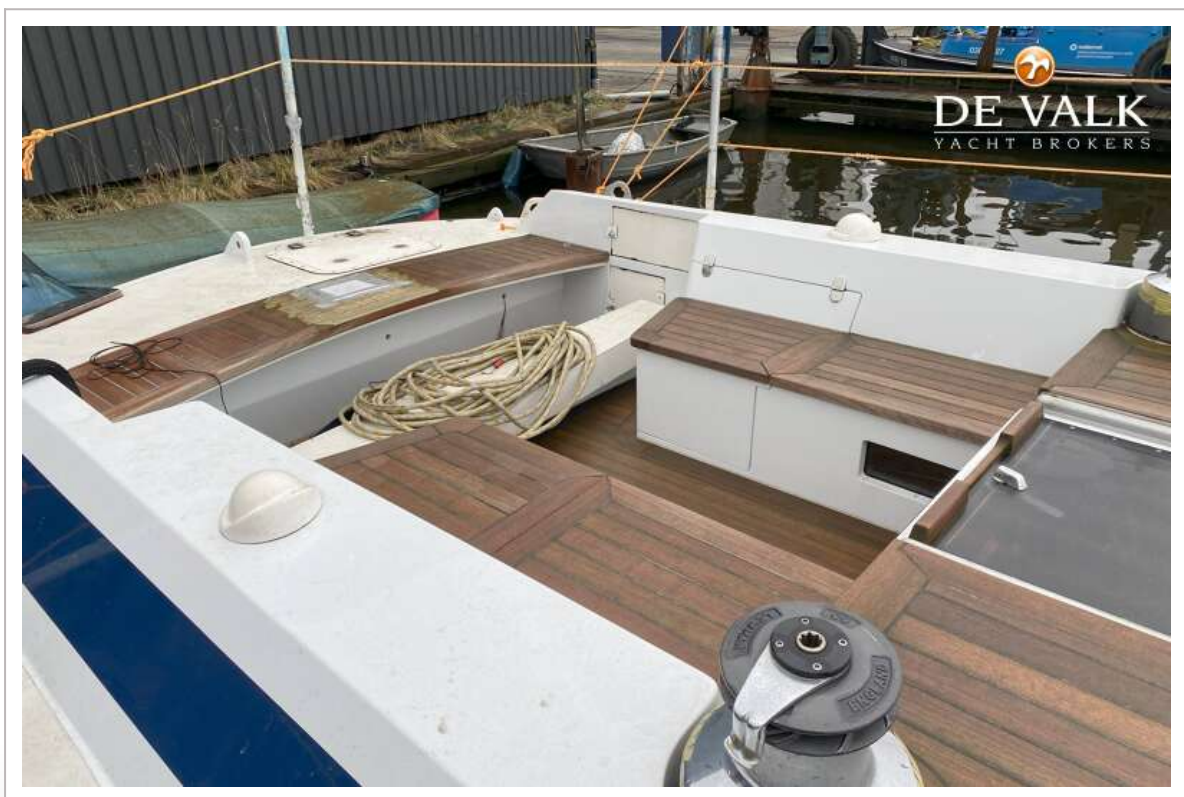
sloop

Multifunctional winches

All Lewmar. 6 electric winches, the rest manual



ROYAL HUISMAN SLOOP



ROYAL HUISMAN SLOOP



ROYAL HUISMAN SLOOP



ROYAL HUISMAN SLOOP



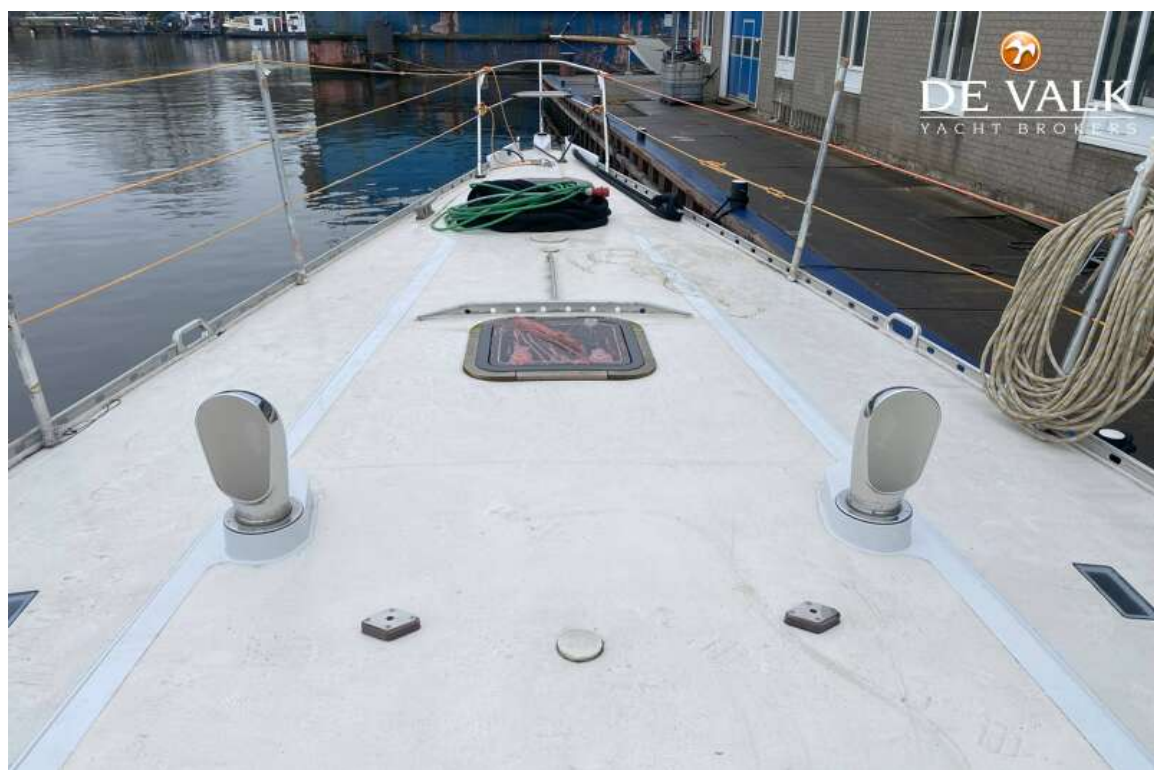
ROYAL HUISMAN SLOOP



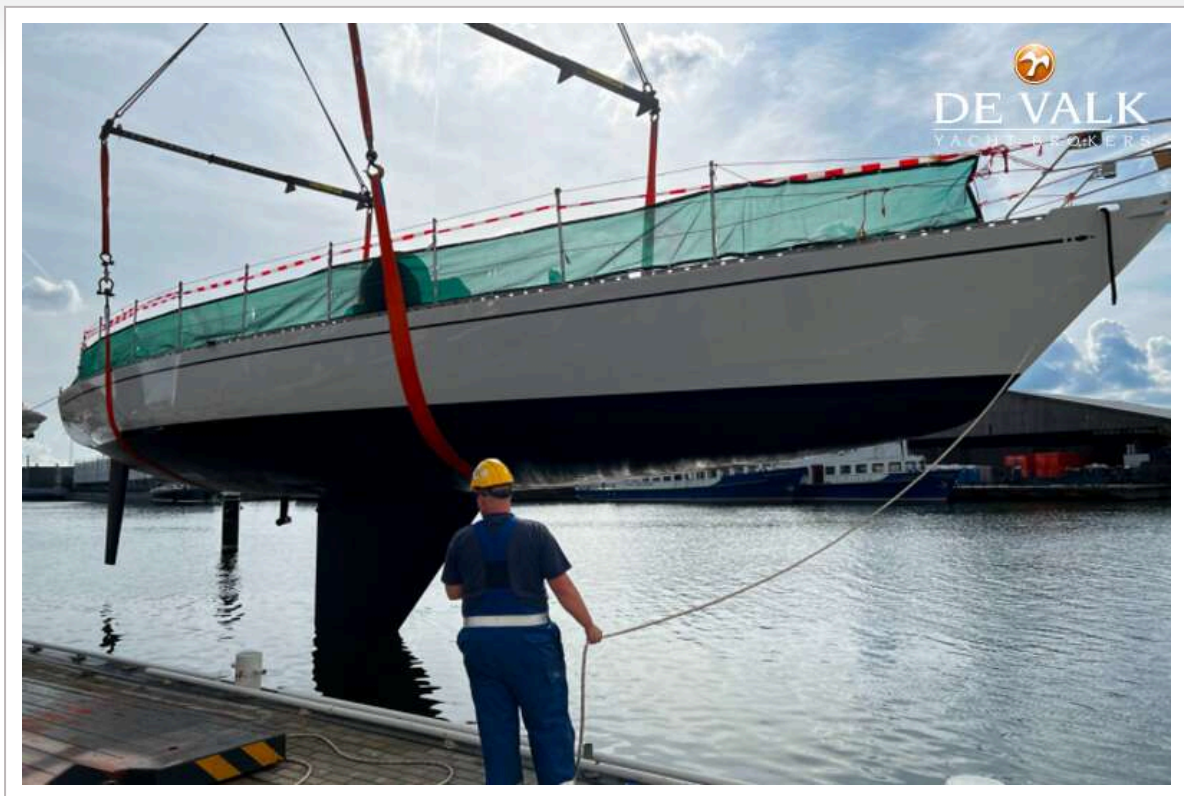
ROYAL HUISMAN SLOOP



ROYAL HUISMAN SLOOP



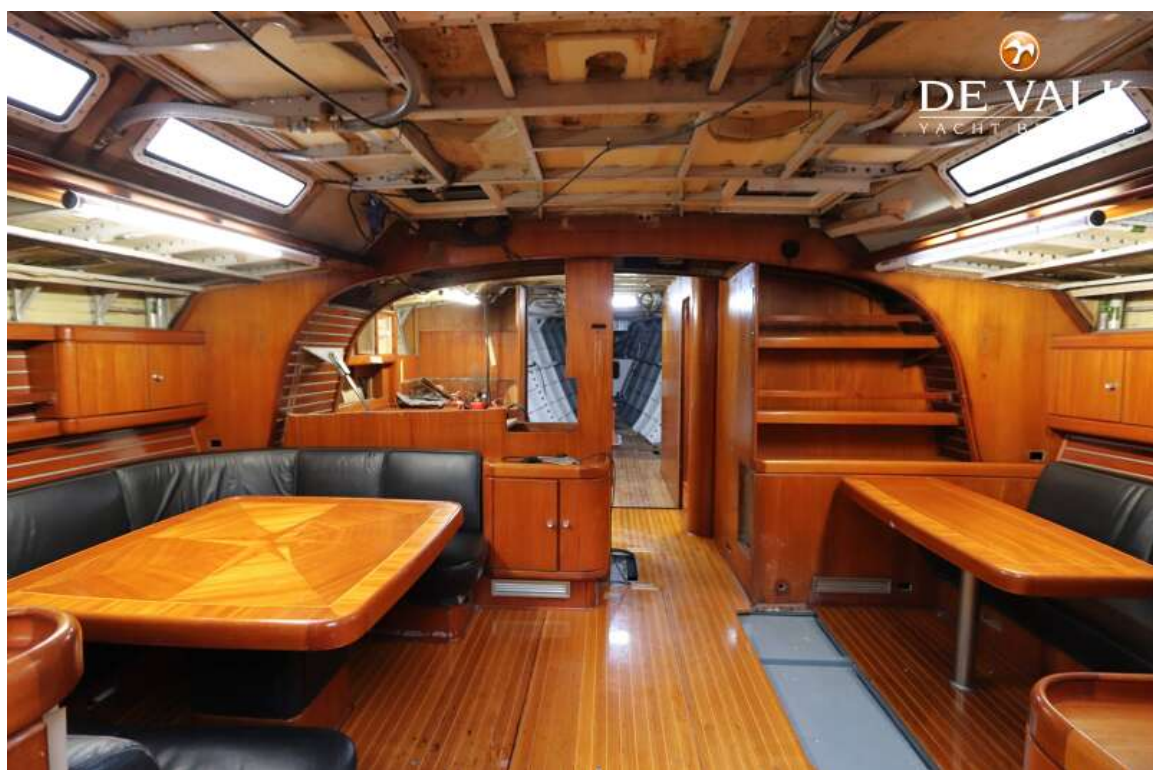
ROYAL HUISMAN SLOOP



ROYAL HUISMAN SLOOP



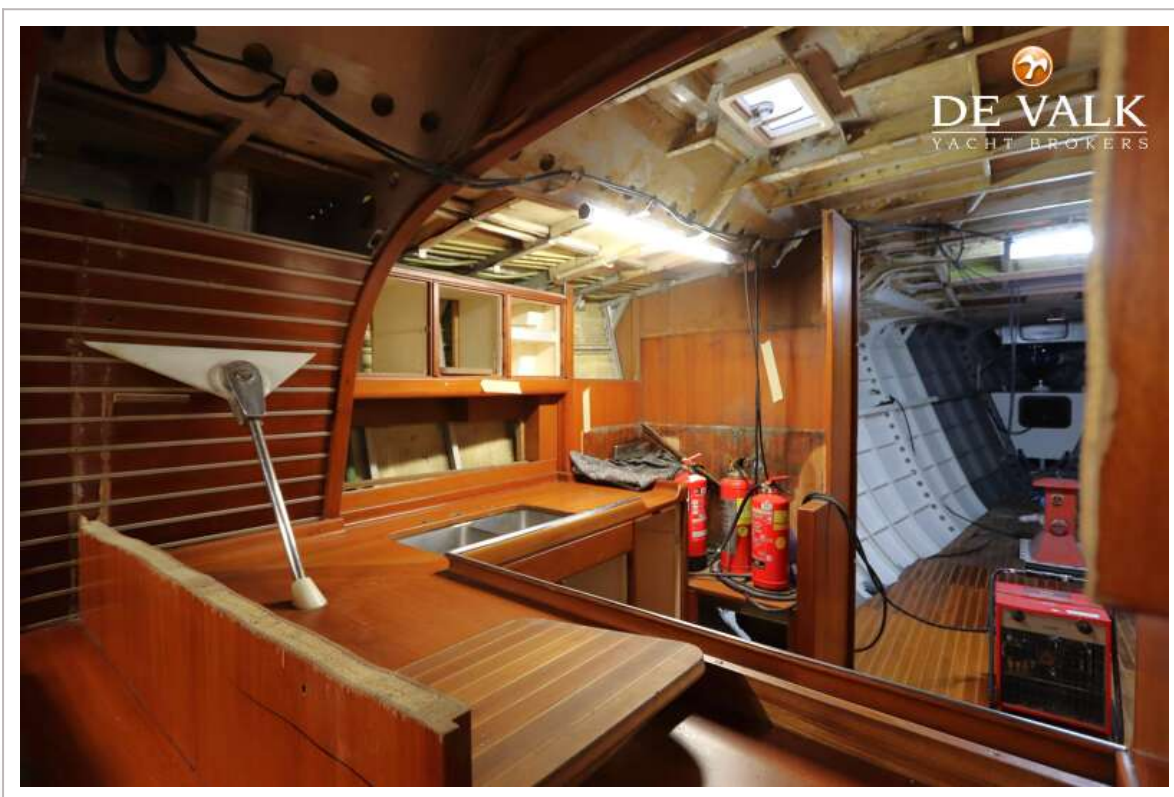
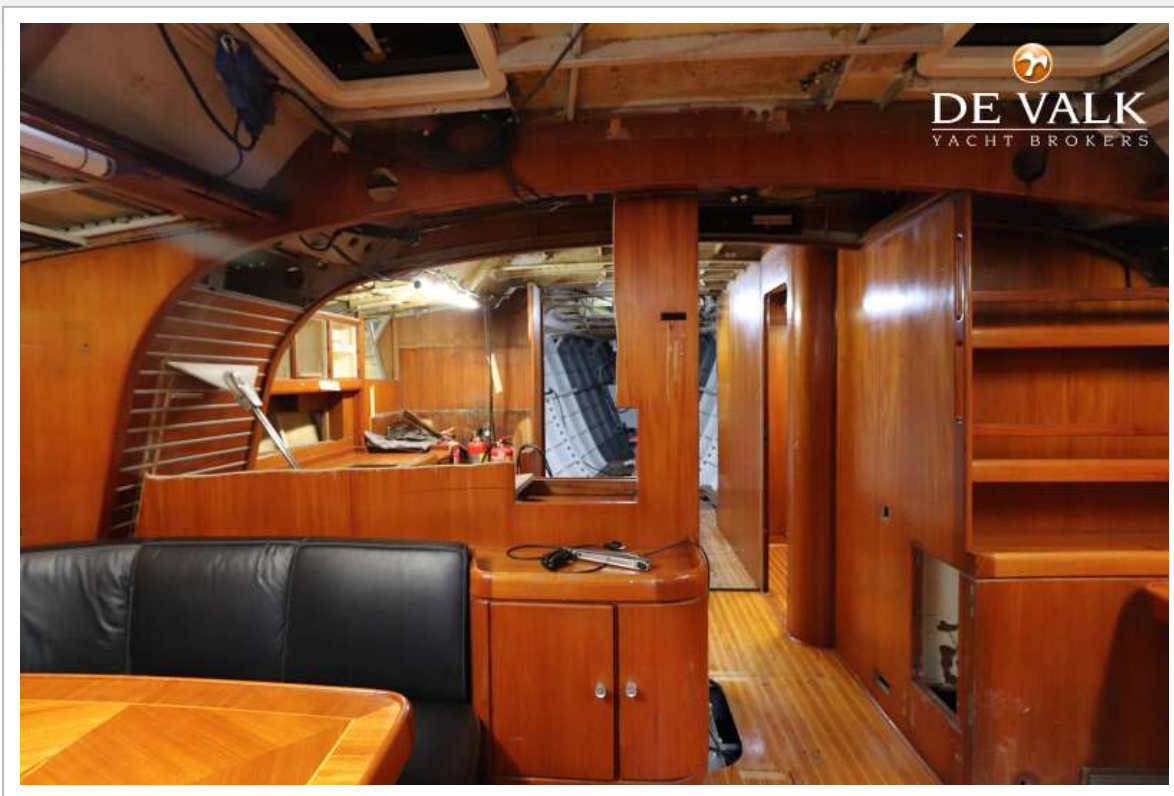
ROYAL HUISMAN SLOOP



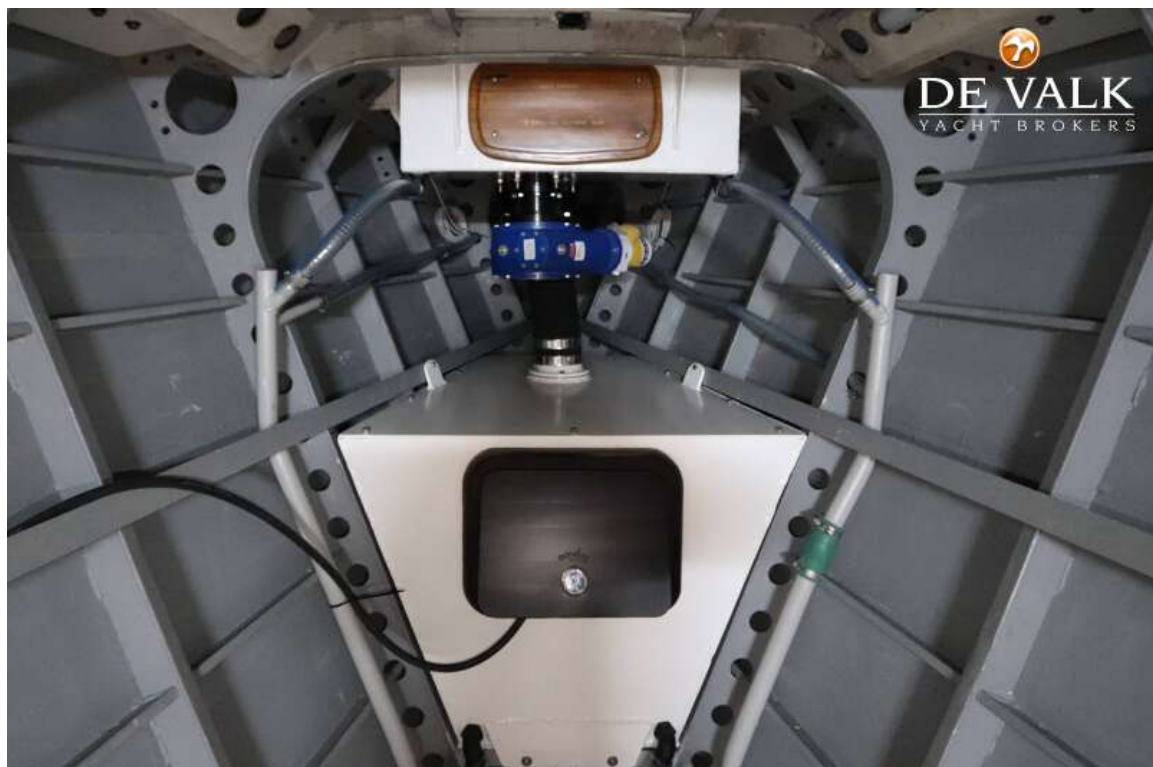
ROYAL HUISMAN SLOOP



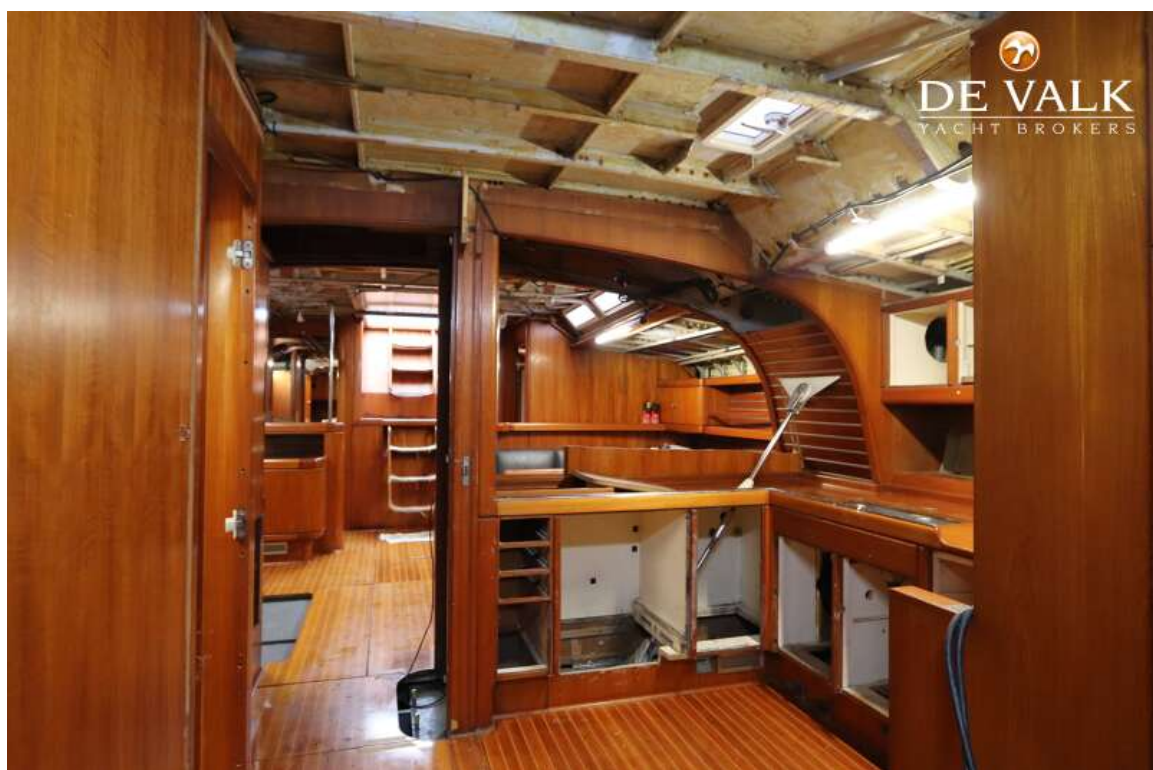
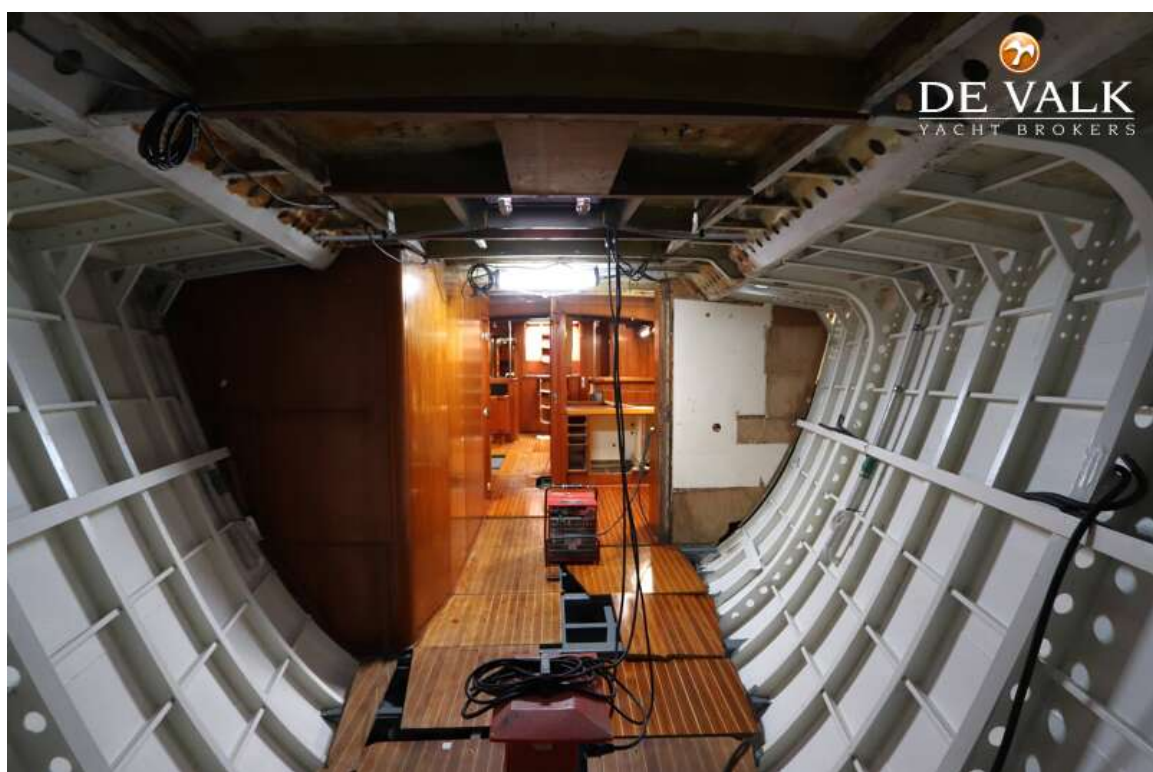
ROYAL HUISMAN SLOOP



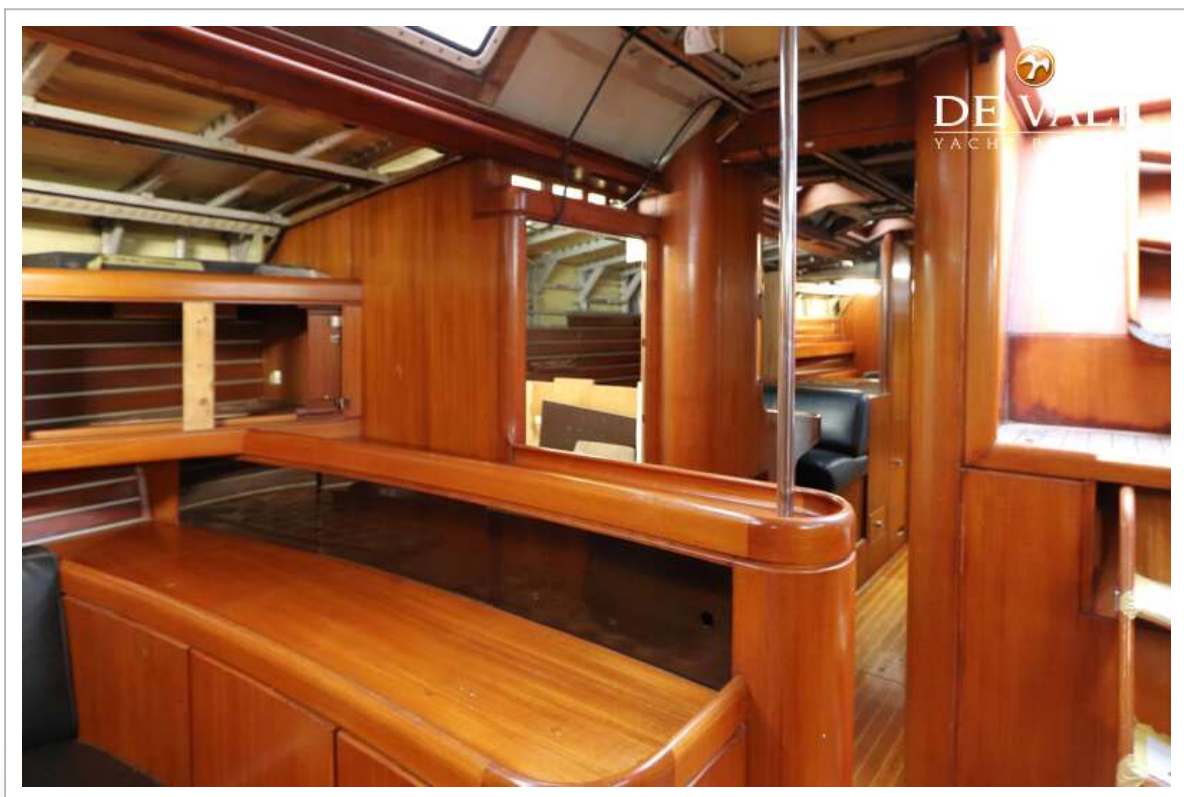
ROYAL HUISMAN SLOOP



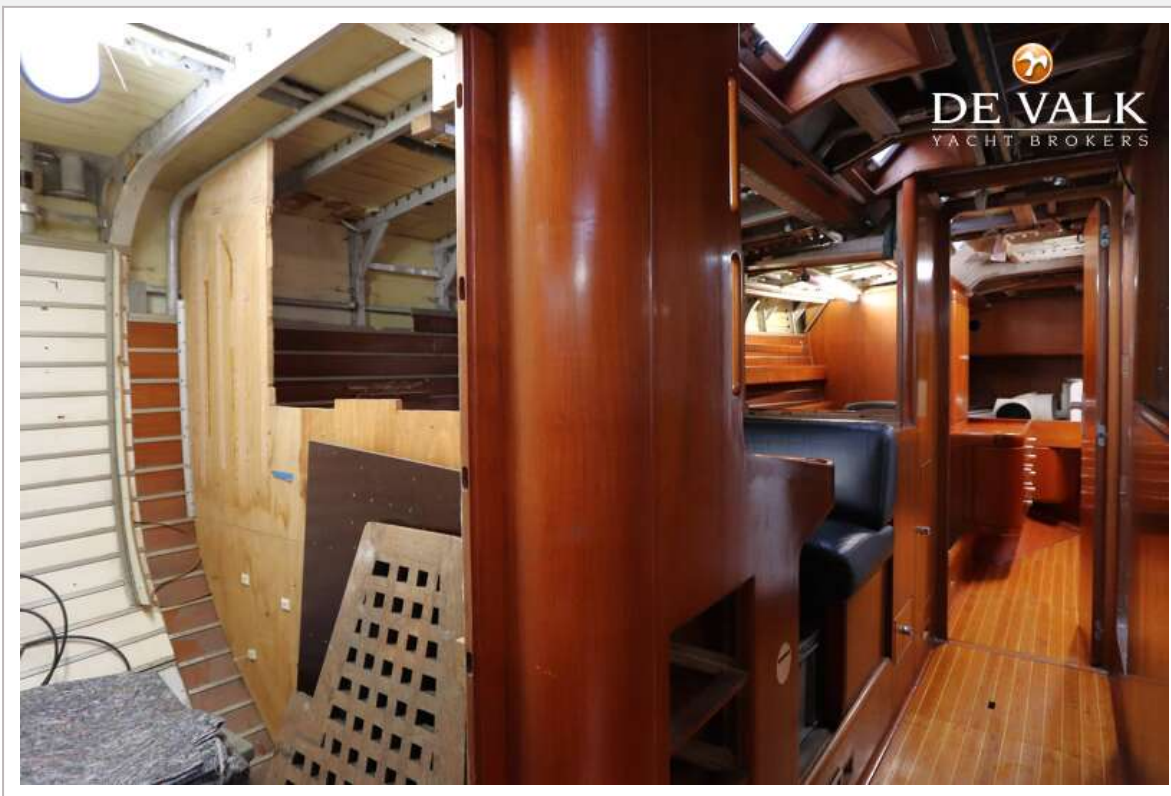
ROYAL HUISMAN SLOOP



ROYAL HUISMAN SLOOP



ROYAL HUISMAN SLOOP



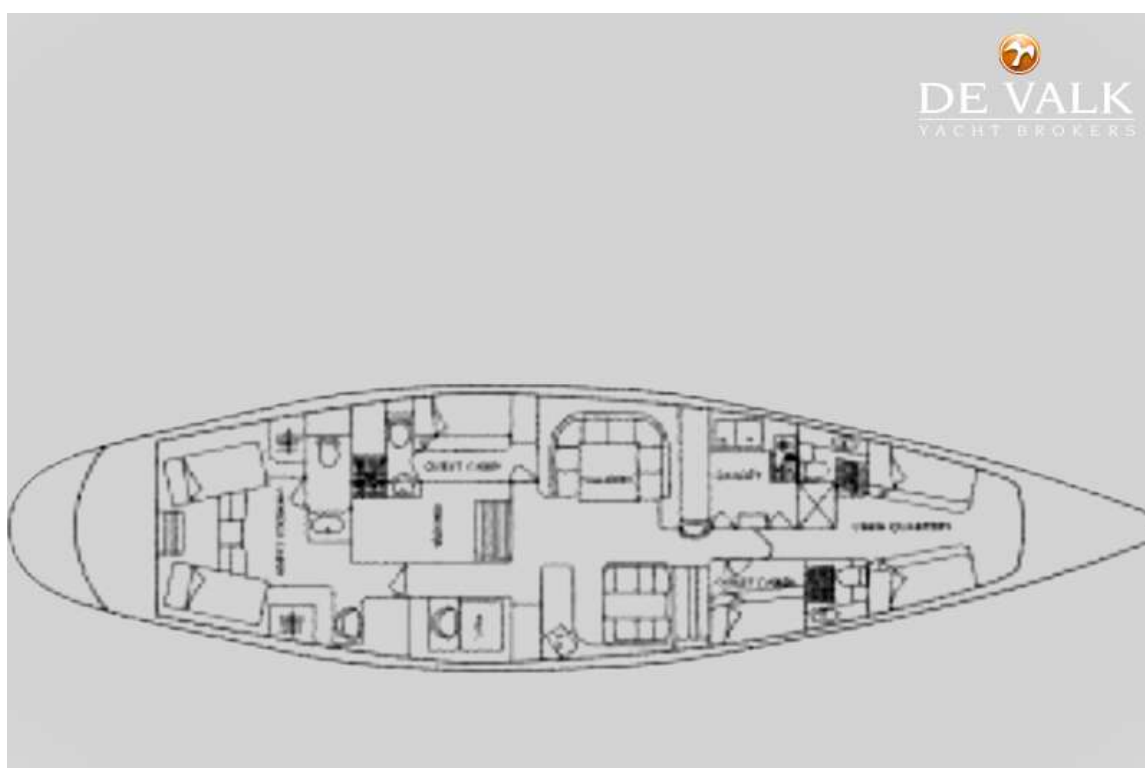
ROYAL HUISMAN SLOOP



ROYAL HUISMAN SLOOP



ROYAL HUISMAN SLOOP



ROYAL HUISMAN SLOOP

