



DE VALK
YACHT BROKERS



HANSE 545



DE VALK
YACHT BROKERS

BROKER'S COMMENTS

In a long line of various designs Hanse Yachts again looked at their house-designer Judel & Vrolijk to create the next step. The Hanse 545 has a very unique and distinctive design with vertical hull windows in the saloon, a superstructure with roof overhang and flush hatches. In combination with the self-tacking jib, electric winches, full cockpit-control she can be easily sailed by one person; a bonus for short-handed cruises with family and friends who are unfamiliar with sailing. The huge cockpit is the place to be for sunset al-fresco dining and leisure. Located in Greece.

Marc Weijenberg

SPECIFICATIONS

Dimensions	16.20 x 4.91 x 2.80 (m)	Builder	Hanse
Built	2010	Cabins	3
Material	GRP	Berths	6
Engine(s)	1 x Yanmar 4JH4-THE diesel	Hp/Kw	110.00 (hp), 80.96 (kw)
Asking price	€ 260.000 (VAT Not paid)	Lying	Greece

CONTACT

Sales office	De Valk Thuishaven	Telephone	+31 35 5829042
Address	Marinaweg 8 (postal address) 1361 AC Almere NL	E-mail	thuishaven@devalk.nl

DISCLAIMER

These particulars are given in good faith as supplied but cannot be guaranteed.



GENERAL

Model	HANSE 545
Type	sailing yacht
LOA (m)	16,20
LWL (m)	14,60
Beam (m)	4,91
Draft (m)	2,80
Year built	2010
Builder	Hanse
Country	Germany
Designer	Judel & Vrolijk
Displacement (t)	18,7
Ballast (tonnes)	cast iron 5,3
CE norm	A
Hull material	GRP
Hull colour	white
Hull shape	round-bilged
Keel type	bulb keel
Superstructure material	GRP
Deck material	GRP
Deck finish	teak
Cockpit deck finish	teak
Antifouling (year)	2025
Window material	polycarbonate
Deckhatch	8 x (flush mounted & standard)
Portholes	aluminium
Fuel tank (litre)	stainless steel 400
Freshwater tank (litre)	stainless steel 700 (in 2 tanks)
Blackwater tank (litre)	stainless steel 2 x 100
Blackwater tank extraction	deck extraction + uw line
Wheel steering	mechanical 2 x Jefa (carbon wheels)



Emergency tiller	yes
Extra info	large fold-down (hydraulic) bathing platform. Large lazarettes/lockers forward and aft.
Extra info	A walkthrough video is available.

ACCOMMODATION

Cabins	3
Berths	6
Interior	Maple & mahogany
Saloon	L-shaped dinette with opposite sofa seating.
Headroom saloon (m)	1,96
Heating	diesel ducted hot air Eberspaecher
Air-conditioning	reverse cycle airco Cruisair (12000 btu)
Chart table	yes
Aft Cabin	2 x
Dinette	with settees (length 1,60 & 2,10 mtr)
Galley	L-shape
Countertop	corian
Sink	corian 2 x
Cooker	calor gas Eno 3-burner
Oven	calor gas Eno
Fridge	frontloader Isotherm
Freezer	toploader Isotherm
Hot water system	220V + engine 40 ltr
Water pressure system	electrical
Crockery	yes
Owners cabin	double bed
Bed length (m)	2,00 x 1,40 mtr, headroom: 1,94 mtr
Wardrobe	hanging/drawers/shelves
Bathroom	en suite I
Toilet	en suite



Toilet system	electric
Wash basin	in the bathroom
Shower	en suite
Extra info	headroom bathroom 1,96 mtr
Guest cabin 1	double bed
Bed length (m)	2,05 x 1,50 mtr, headroom 1,94 mtr
Wardrobe	hanging and shelves
Bathroom	shared II
Toilet	shared
Toilet system	electric
Wash basin	in the bathroom
Shower	shared
Extra info	headroom bathroom 1,90 mtr
Guest cabin 2	double bed
Bed length (m)	2,05 x 1,50 mtr, headroom 1,94 mtr
Wardrobe	hanging and shelves
Crew cabin(s)	optional; there is enough space in the bow to accommodate a crew-cabin. Now it is used as a huge storage/sail locker area.
Tender garage	access via bathingplatform & cockpit suitable for an approx. 3,40 x 1,40 mtr dinghy

MACHINERY

No of engines	1
Make	Yanmar
Type	4JH4-THE
HP	110
kW	80.96
Fuel	diesel
Year installed	2010
Maximum speed (kn)	9
Cruising speed (kn)	7
Consumption (l/hr)	5



Engine cooling system	freshwater heat exchanger
Drive	shaft
Engine controls	bowden cable
Gearbox	mechanical Yanmar KM4
Bowthruster	electric Lewmar (retractable)
Exhaust	watercooled
Manual bilge pump	1 x
Electric bilge pump	2 x
Electrical installation	12v/220v
Generator	silent separator Fisher Panda 6000i 6 kW
Running hours generator	Approx. 550
Start battery	1 x
Service battery	4 x 165 Ah (Victron 2024)
Bowthruster battery	1 x (including designated Victron charger)
Battery monitor	Victron
Battery charger/inverter	Victron 12v/1600watt/70amp
Shorepower	with cable
Watermaker	Spectra 12v (50ltr/hr, needs service)

NAVIGATION

Compass	Plastimo 130 + handheld compass
Electric compass	via autopilot
Depth sounder	Raymarine ST70
Log	Raymarine ST70
Windset	Raymarine ST70
VHF	Raymarine Ray 55E
VHF handheld	Cobra Marine
Autopilot	Raymarine P70s (2021)
GPS	Raymarine
Plotter	Raymarine E120
Electronic chart(s)	plus regular charts



Navigation lights

LED

EQUIPMENT

Sprayhood

(2025)

Bimini

(2025)

Cockpit cushions

full set (length 2,05 mtr)

Cockpit table

fixed stainless steel

Bathing platform

fold open type, hydraulic operation

Boarding ladder

stainless steel

Gangway

folding

Deck shower

hot & cold

Anchor

Delta

Anchor chain

100 mtr (stainless)

Anchor 2

Pool Plus chain-line

Windlass

electrical Lewmar

Sea railing

wire

Grab rail (superstructure)

stainless steel

Railing side opening gates

2 x

Pushpit

stainless steel

Pulpit

stainless steel

Lifejackets

yes

Safety harness

yes

Lifebuoy

yes

Radar reflector

yes

Fenders

yes

Mooring lines

yes

TV

yes

Radio-cd player

yes

Cockpit speakers

yes

Speakers in salon

yes



Extra info

bosun's chair, covers for hatches and steering wheels, tools, spare parts, 2 x gasbottle, et cetera

RIGGING

Rigging	fractional
Standing rigging	wire (2010)
Brand mast	Seldén
Material mast	aluminium coated
Spreaders	2 x set
Keel stepped mast	yes
Mainsail cover	including Main-drop system and Lazy Jacks
Battcars	yes
Fully battened mainsail	Eco Palma Tec laminate (2024)
Jib	Eco Palma Tec laminate/furling (2024)
Genoa furler	Furlex
Self tacking jib installation	Lewmar
Reefing System	slabreefing
Backstay adjuster	yes
Boomvang	mechanical and tackle
Primary sheet winch	electric 2 x Lewmar 54EST
Secondary sheet winch	2 x Lewmar 46ST
Extra info	cockpit-light in boom



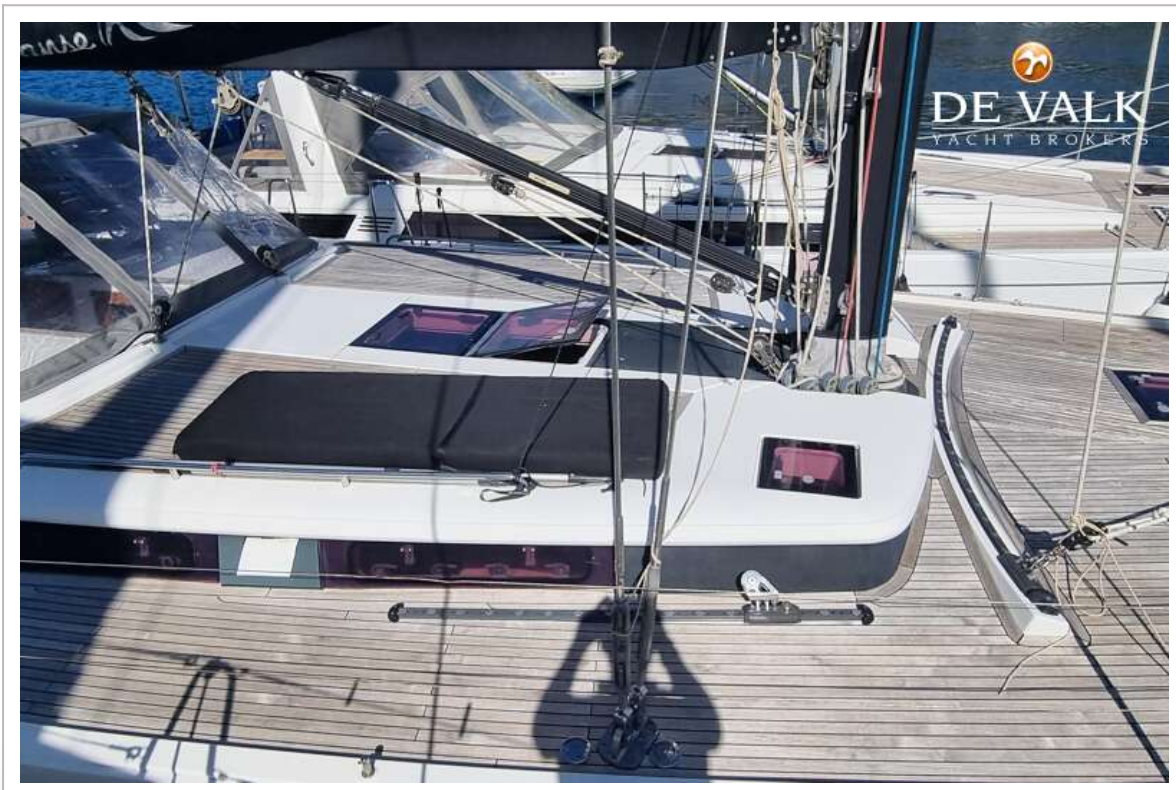
HANSE 545



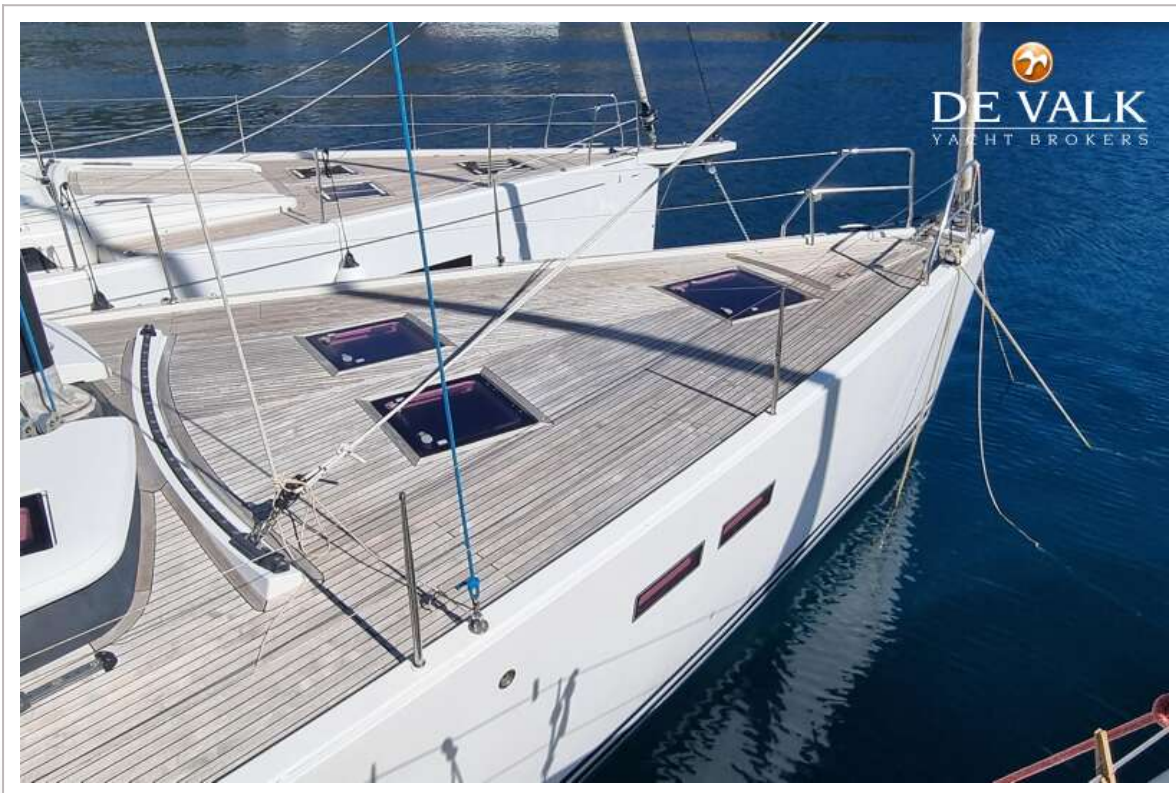
HANSE 545



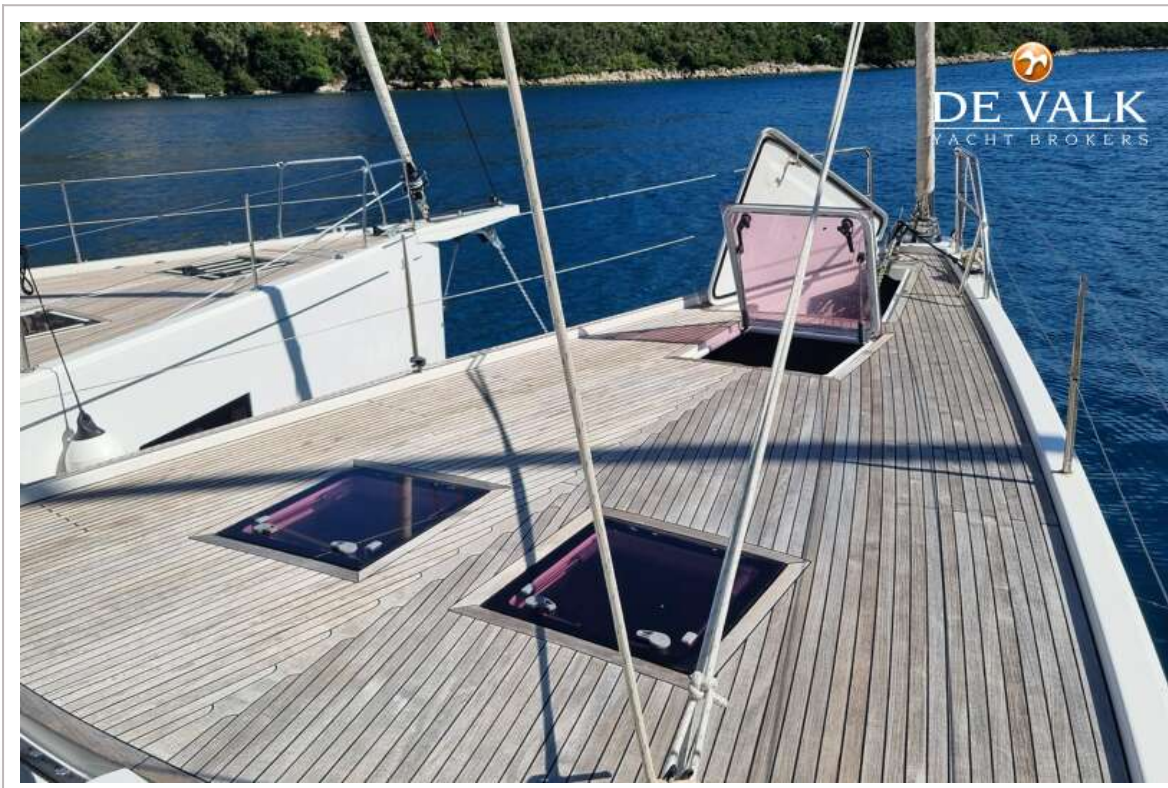
HANSE 545



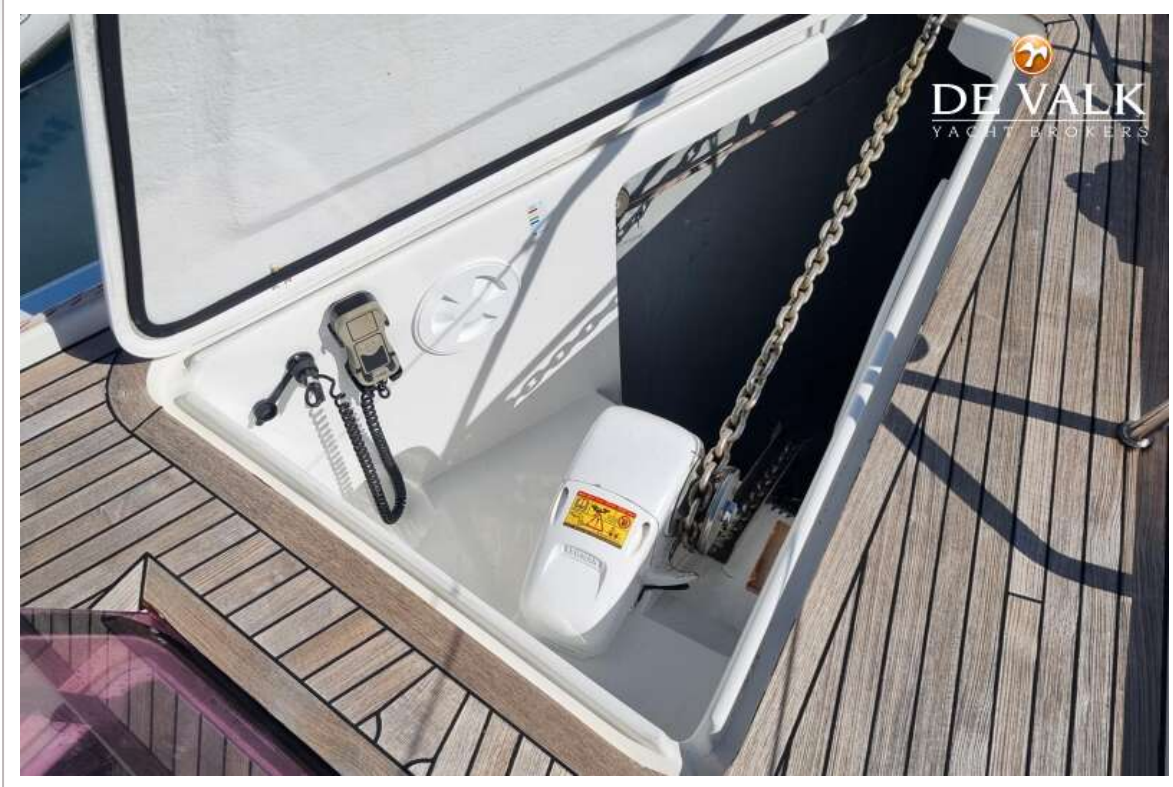
HANSE 545



HANSE 545



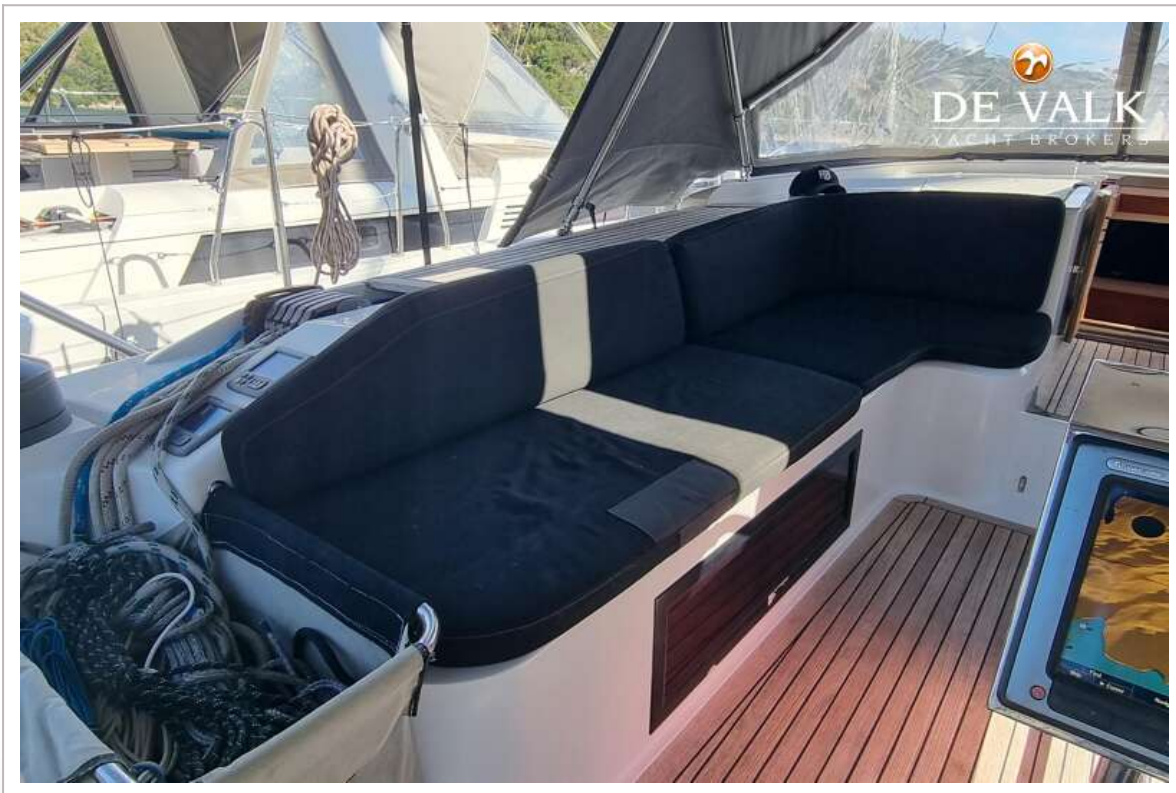
HANSE 545



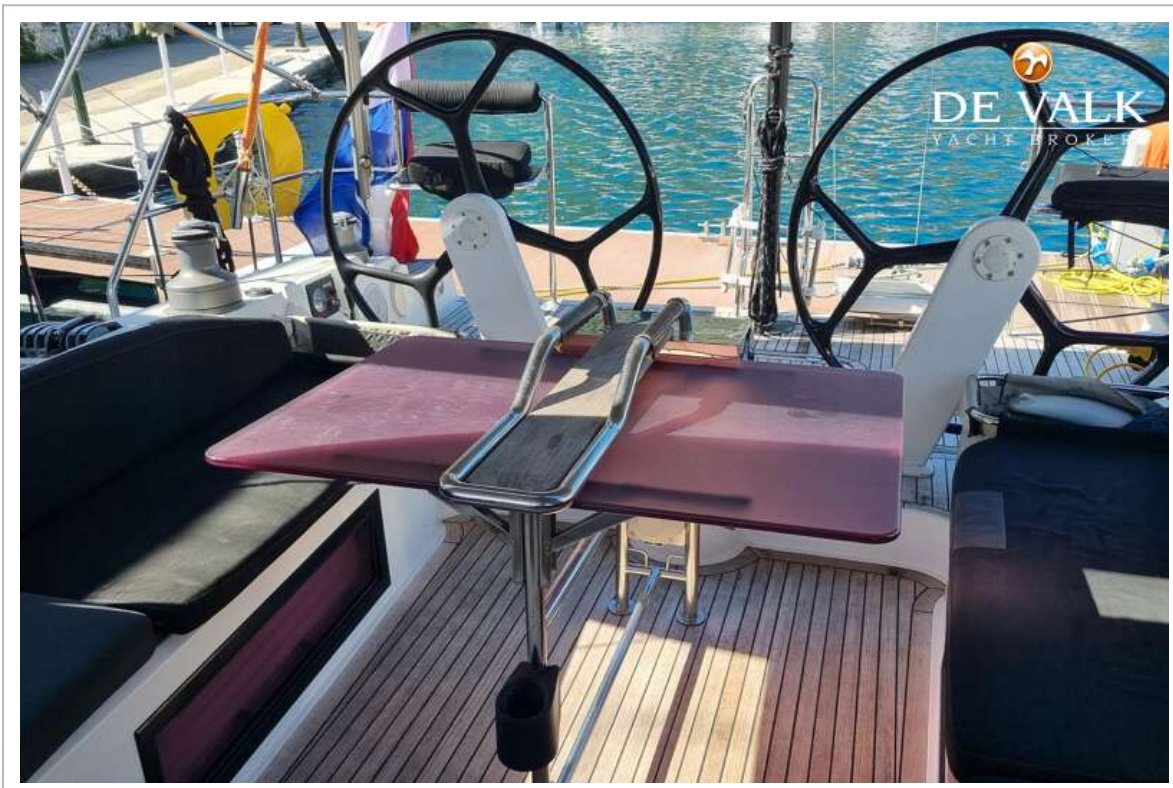
HANSE 545



HANSE 545



HANSE 545



HANSE 545



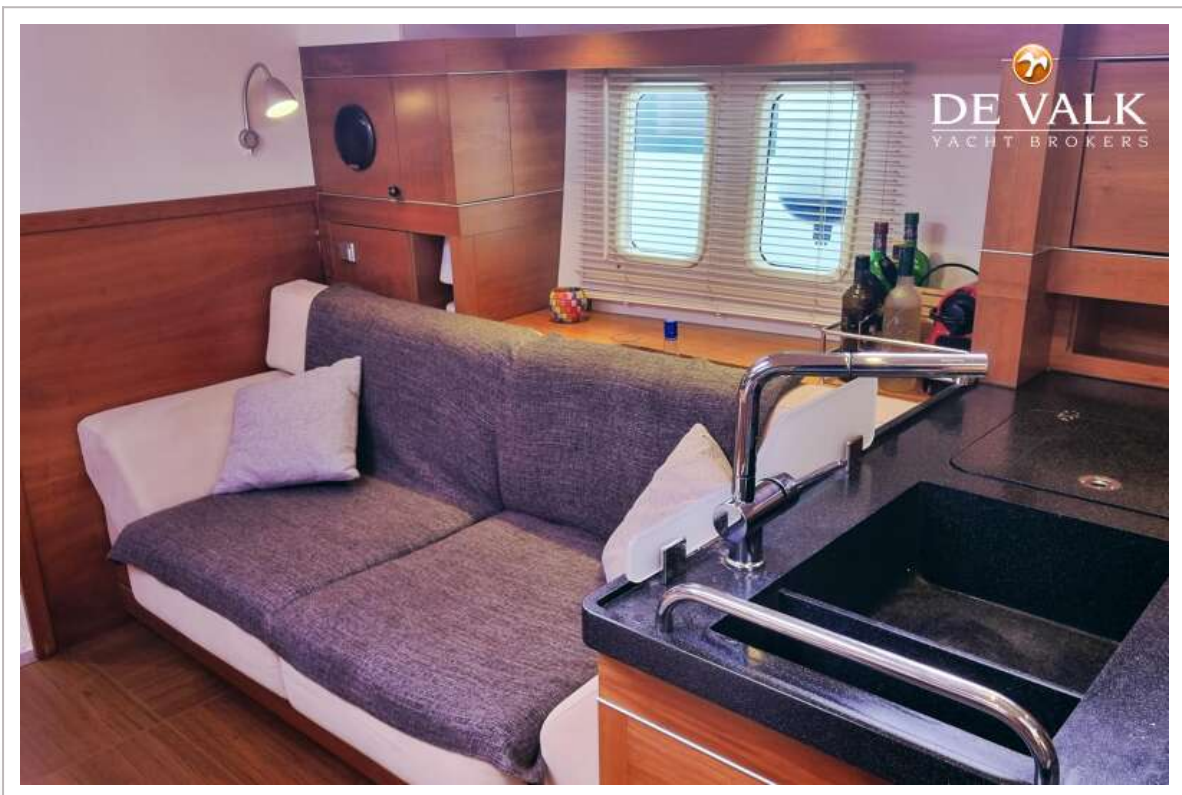
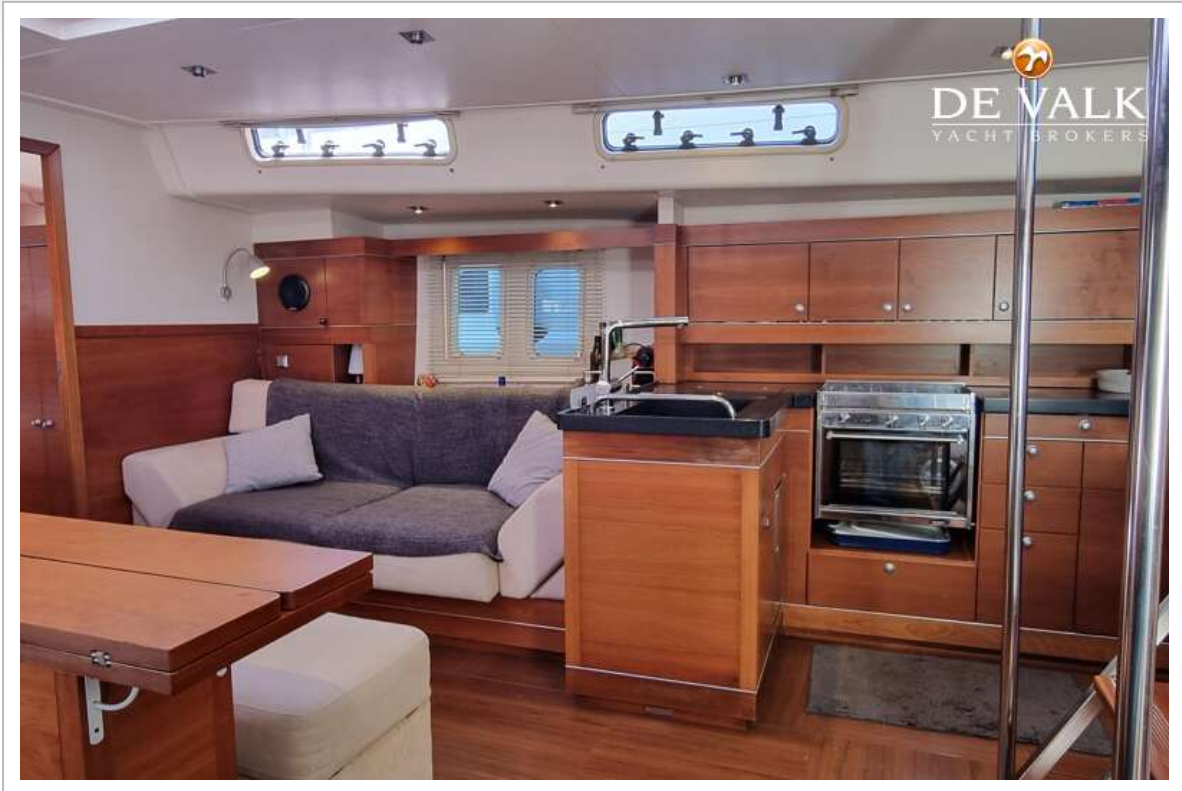
HANSE 545



HANSE 545



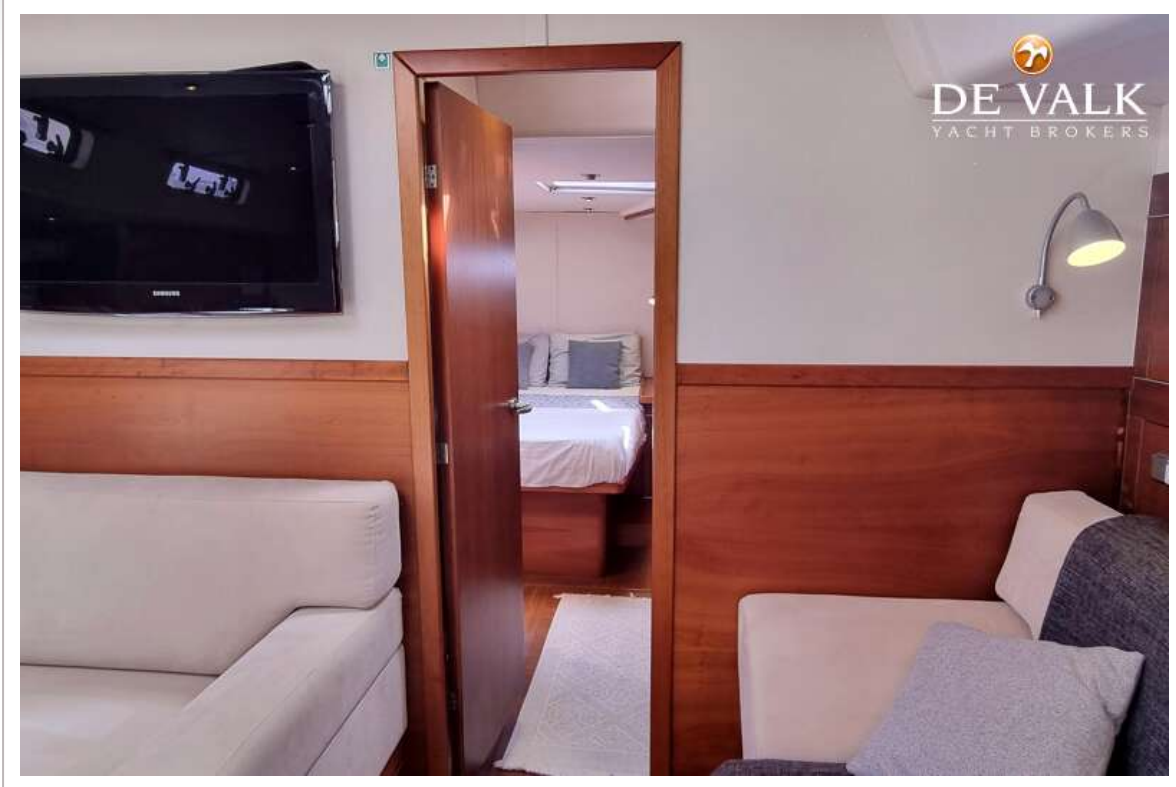
HANSE 545



HANSE 545



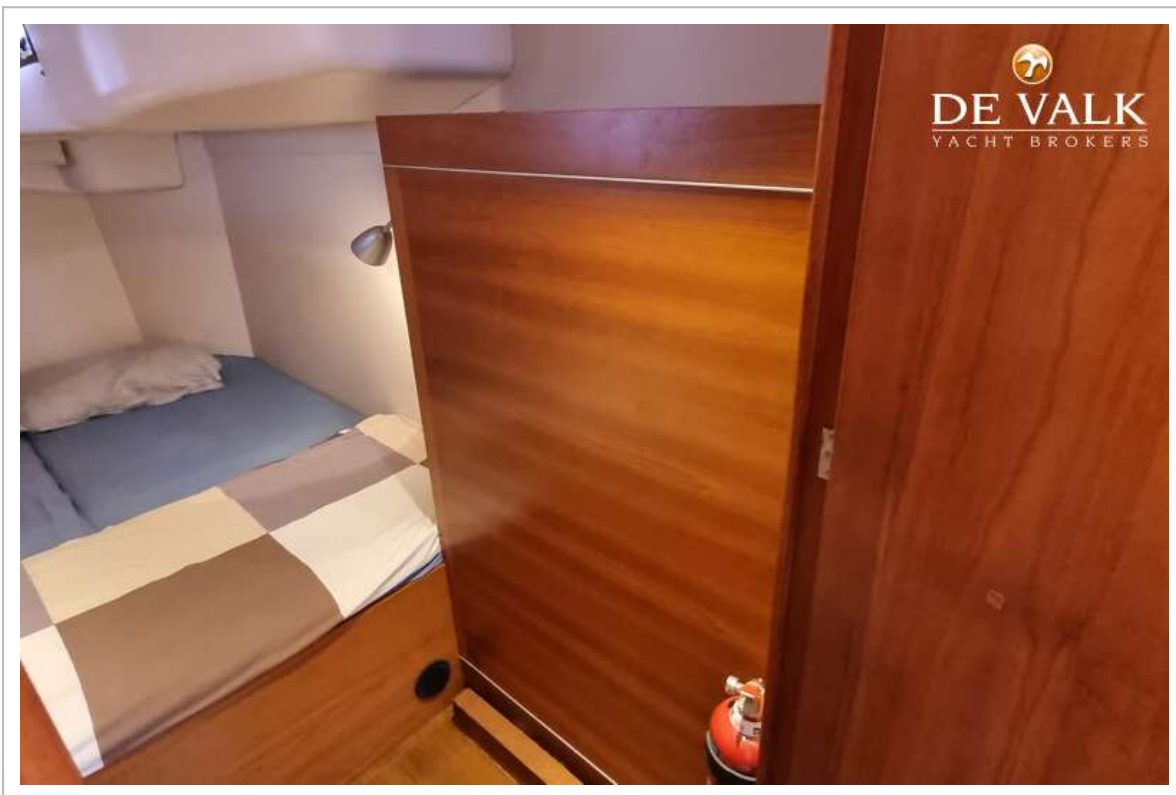
HANSE 545



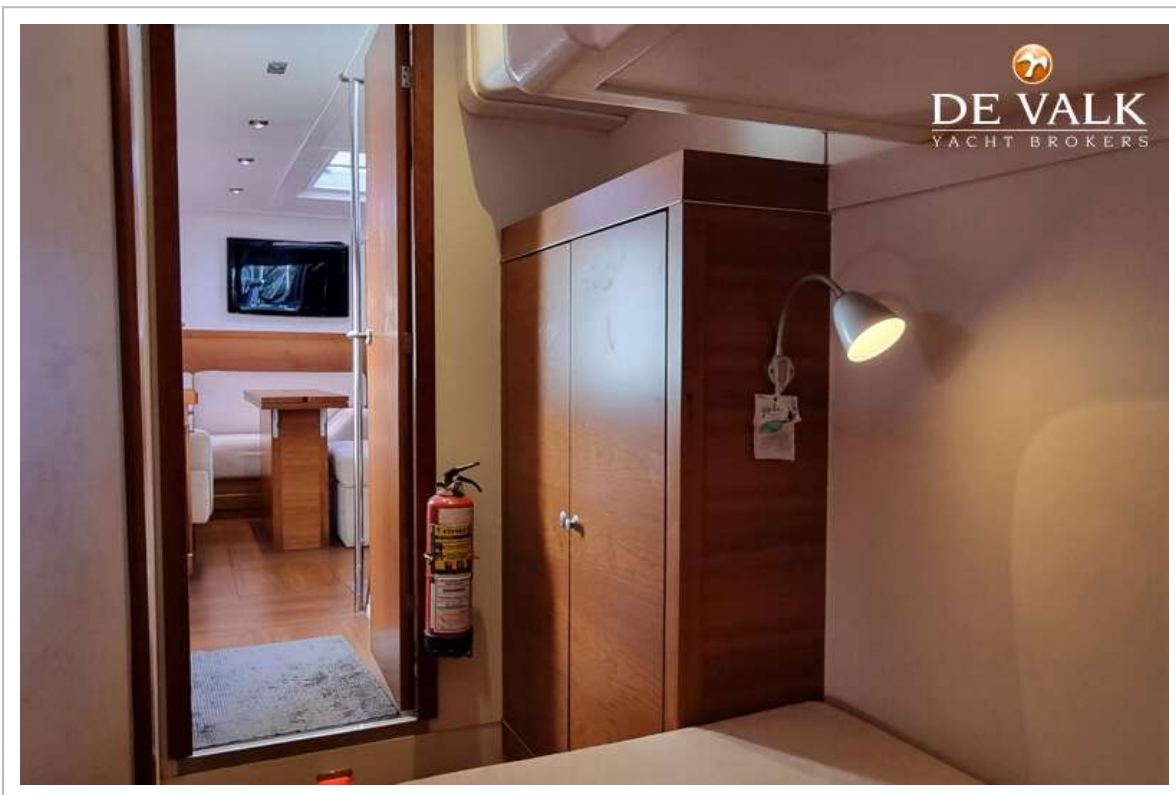
HANSE 545



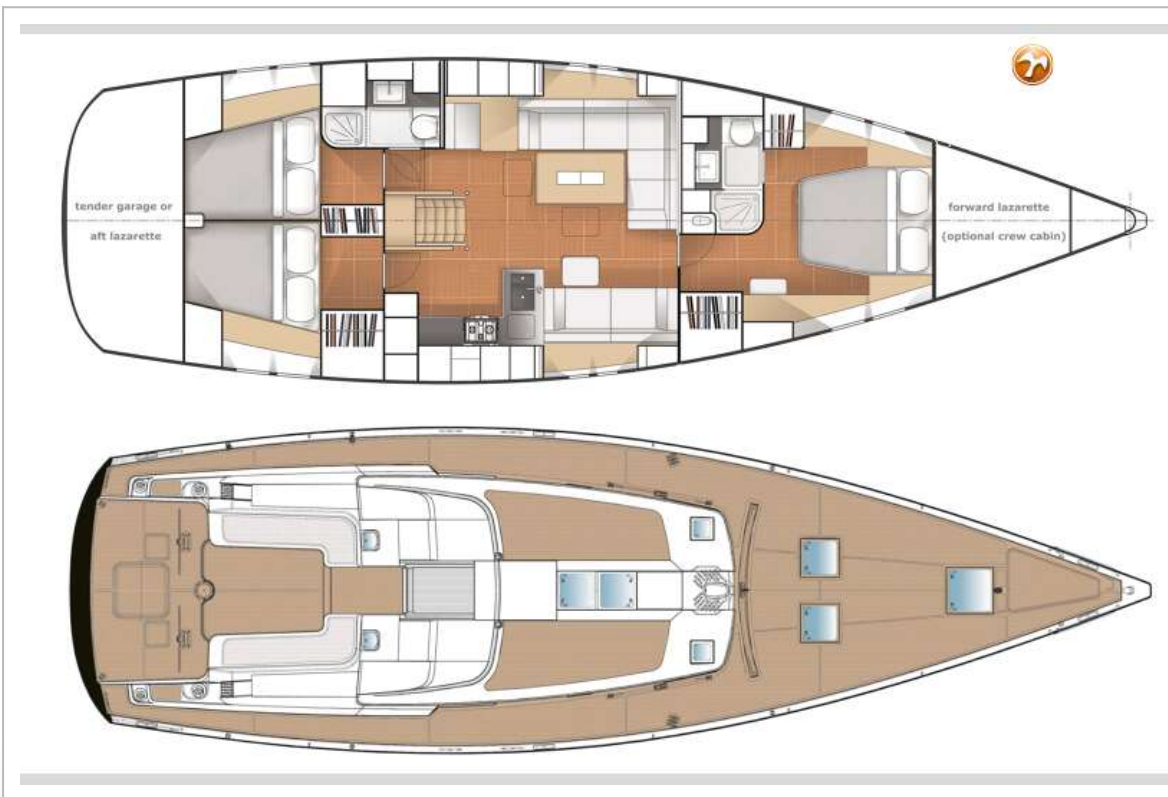
HANSE 545



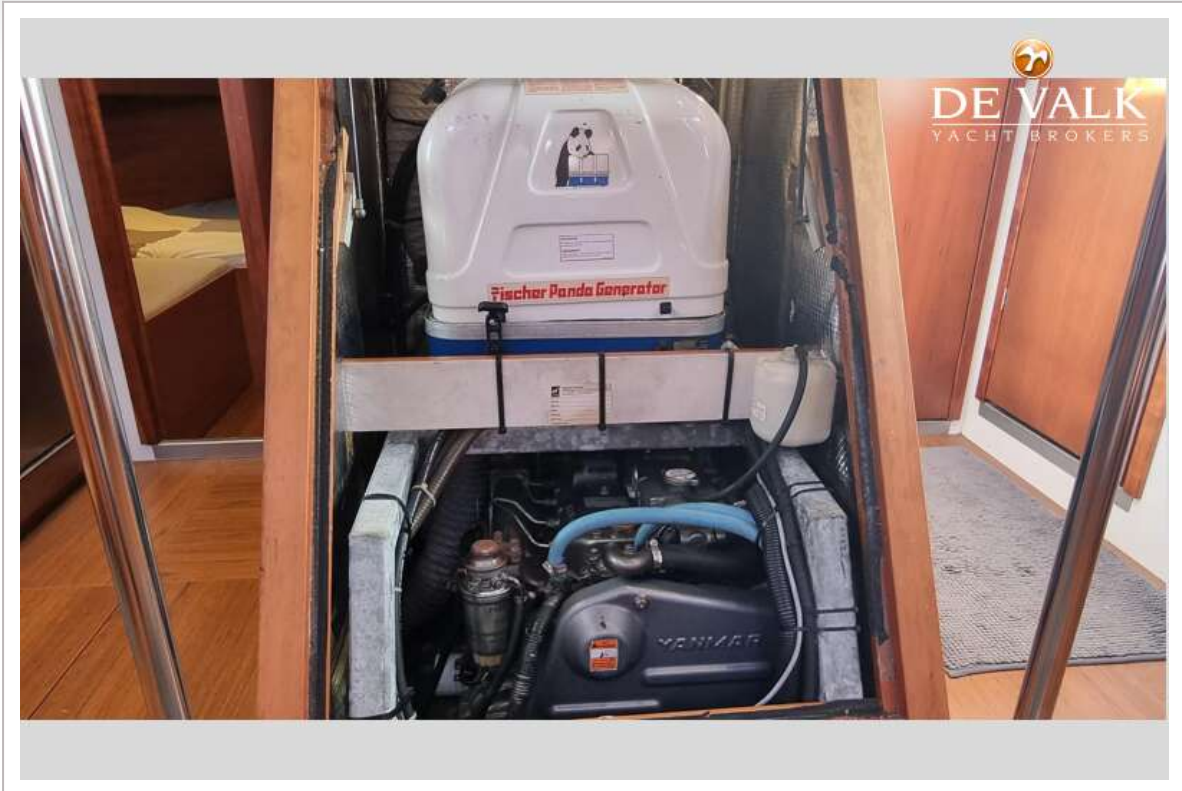
HANSE 545



HANSE 545



HANSE 545



HANSE 545

