



CAR/PASSENGERS FERRY 33

CAR/PASSENGERS FERRY 33

BROKER'S COMMENTS

Italian shipyard's construction car/passengers ferry 33 m with a capacity of 225 pax & 8 Cars. Steel hull rebuilt in 2019. Engines had a W8 level service in 2023. Ship with all licenses valid & ready to sail away for commercial passengers & car transfer. Ship active, serviced and ready for the next summer's tourist season. Ferry that is offered in unbelievably low price. .

Sofia Iliia-Salvanou

SPECIFICATIONS

Dimensions	33.35 x 6.80 x 3.60 (m)	Builder	ISTITUTO TECNICO -NAUTICO LA SPECIA
Built	1980	Cabins	
Material	Steel	Berths	
Engine(s)	2 x FIAT AIFO 8280 SRM diesel	Hp/Kw	2 x 759.00 (hp), 558.62 (kw)
Asking price	€ 600.000 (VAT Exempt)	Lying	elsewhere / Not at sales office

CONTACT

Sales office	De Valk Corfu	Telephone	(+30) 266 111 8095
Address	New Port of Corfu, near Gouvia Marina 490 83 Corfu GR	E-mail	corfu@devalk.nl

DISCLAIMER

These particulars are given in good faith as supplied but cannot be guaranteed.



CAR/PASSENGERS FERRY 33

GENERAL

Model	CAR/PASSENGERS FERRY 33
Type	motor yacht
LOA (m)	33,35
Beam (m)	6,80
Draft (m)	3,60
Year built	1980
Builder	ISTITUTO TECNICO -NAUTICO LA SPECIA
Country	Italy
Gross tonnage	202
Net tonnage	73
Hull material	steel
Hull colour	white
Deck material	steel
Deck finish	non-skid paint
Antifouling (year)	April 2023 (Hempel)
Window material	glass
Portholes	yes
Fuel tank (litre)	6000 (it was cleaned in 2023)
Level indicator (fuel tank)	yes
Freshwater tank (litre)	4000
Level indicator (freshwater)	yes
Blackwater tank (litre)	3000
Wheel steering	yes
Inside helm position	yes

ACCOMMODATION

Crew cabin	3 double
Crew berths	6
Saloon	yes
Air-conditioning	yes



CAR/PASSENGERS FERRY 33

Galley	yes
Countertop	yes
Sink	yes
Fridge	yes
Freezer	yes
Hot water system	yes
Water pressure system	yes
Coffee maker	yes

MACHINERY

No of engines	2
Make	FIAT AIFO
Type	8280 SRM
HP	759
kW	558.62
Fuel	diesel
Year of overhaul	2023 SERVICE LEVEL W8
Maximum speed (kn)	11
Cruising speed (kn)	10
Consumption (l/hr)	80
Engine hours	1.800
Drive	shaft
Shaft seal	yes
Bowthruster	Only propeller installed, no engine
Thrust bearing	yes
Propeller type	fixed
Propeller blades	yes
Propeller shaft material	stainless steel
Shaft lubrication	water
Electric bilge pump	yes
Electrical installation	At W8 service, electric cables related to engine were replaced



CAR/PASSENGERS FERRY 33

Generator	PERKINS 50 Kw
Generator 2	BAUDOUIN 47 Kw
Batteries	yes
Start battery	yes
Service battery	yes
Generator battery	yes
Battery monitor	yes
Battery charger	yes
Shorepower	yes
Stabilizers	yes

NAVIGATION

Compass	yes
Depth sounder	yes
VHF	ICOM IC-MI56 class D SN: 01612
VHF handheld	GMDSS MC MURDO R5 & AIRBAND VHF ICOM IC-A6E
GPS	RECEIVER FURUNO GP-80
Radar/GPS	X BAND JRC 1800(JMA -V1100) 2Kw
Navtex	RECEIVER SHIPMATER RS6100
AIS transponder	RAYTHEON RM808AIS
Radio receiver	VHF/DSC TRANSEIVER FURUNO FM-8500
EPIRB	AUTO KANNAD MARINE SAFELINK SPORT PRO V2
Navigation lights	yes
Extra info	EPIRB MANUAL KANNAD MARINE SAFELINK SPORT PRO V2
Extra info	SART MC MURDOS4 RESCUE. EMA D.O.O. BLUE TRACKER SSAS

EQUIPMENT

Anchor	200 Kg OMEGA
Anchor chain	150 m New
Anchor 2	200 Kg



CAR/PASSENGERS FERRY 33

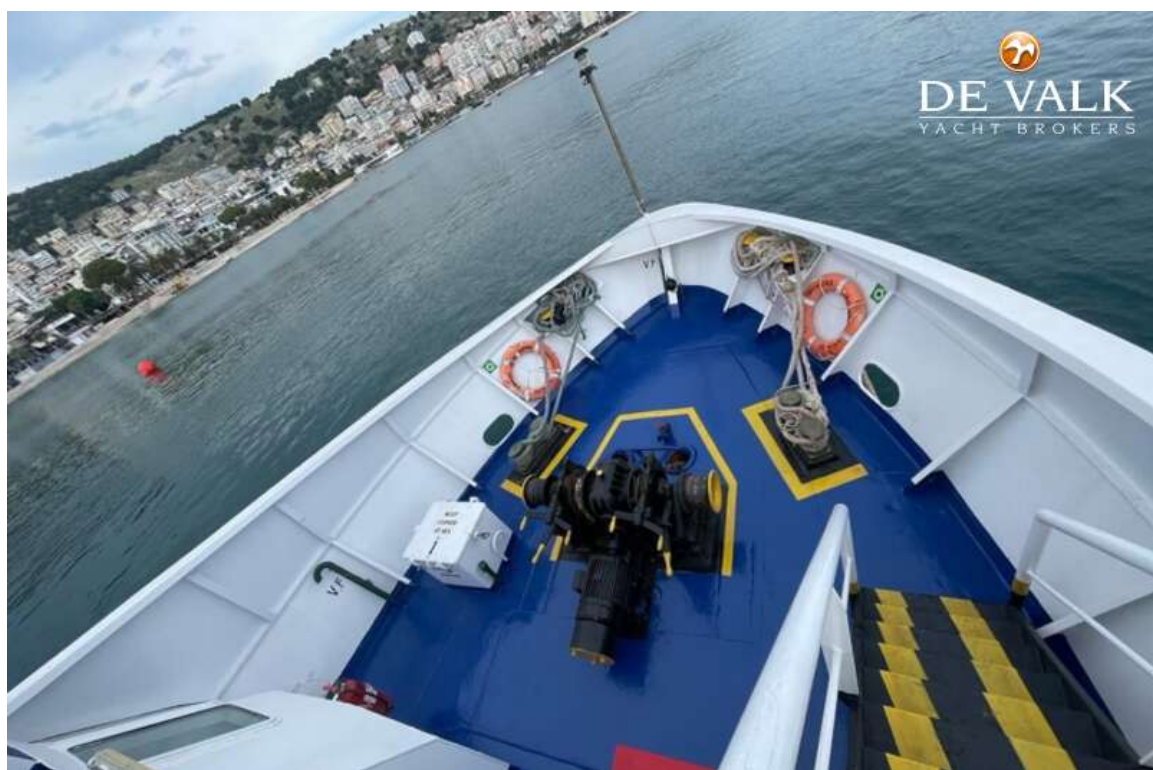
Anchor chain	150 m New
Windlass	electrical
Lifejackets	yes
Fenders	yes
Mooring lines	yes
Fire extinguisher	yes



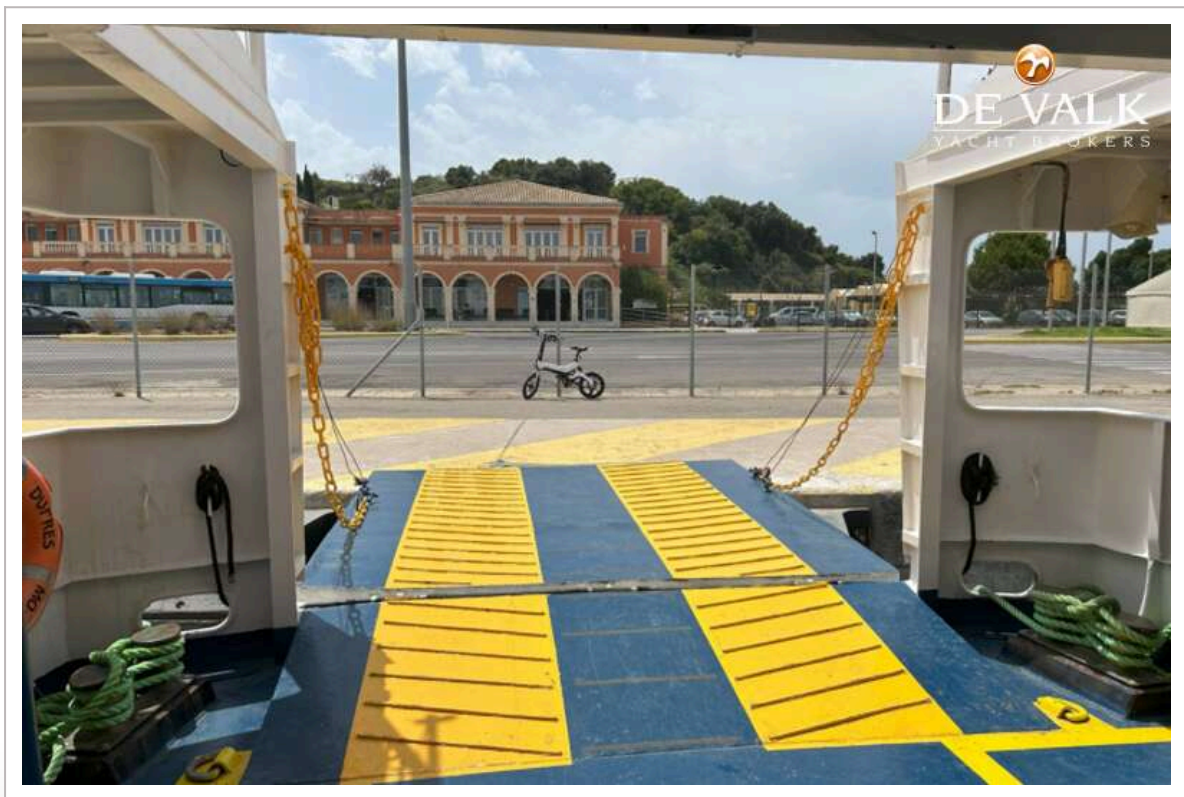
CAR/PASSENGERS FERRY 33



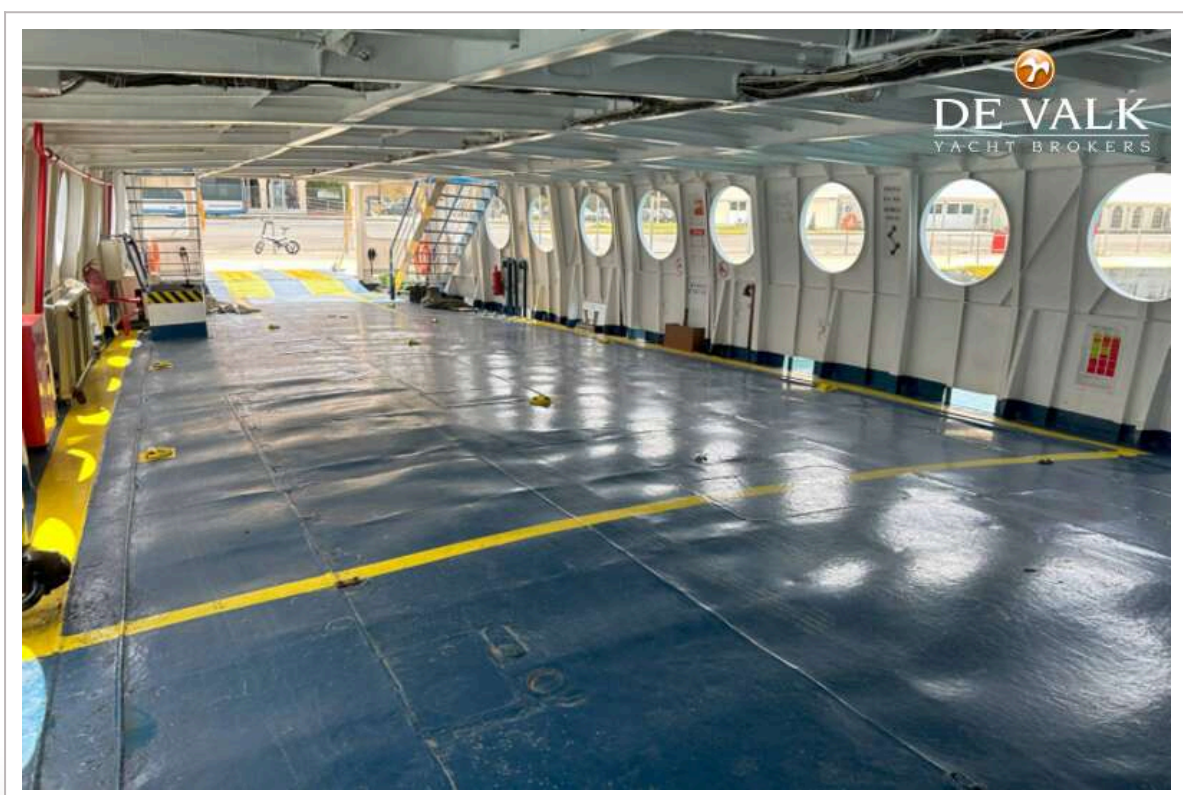
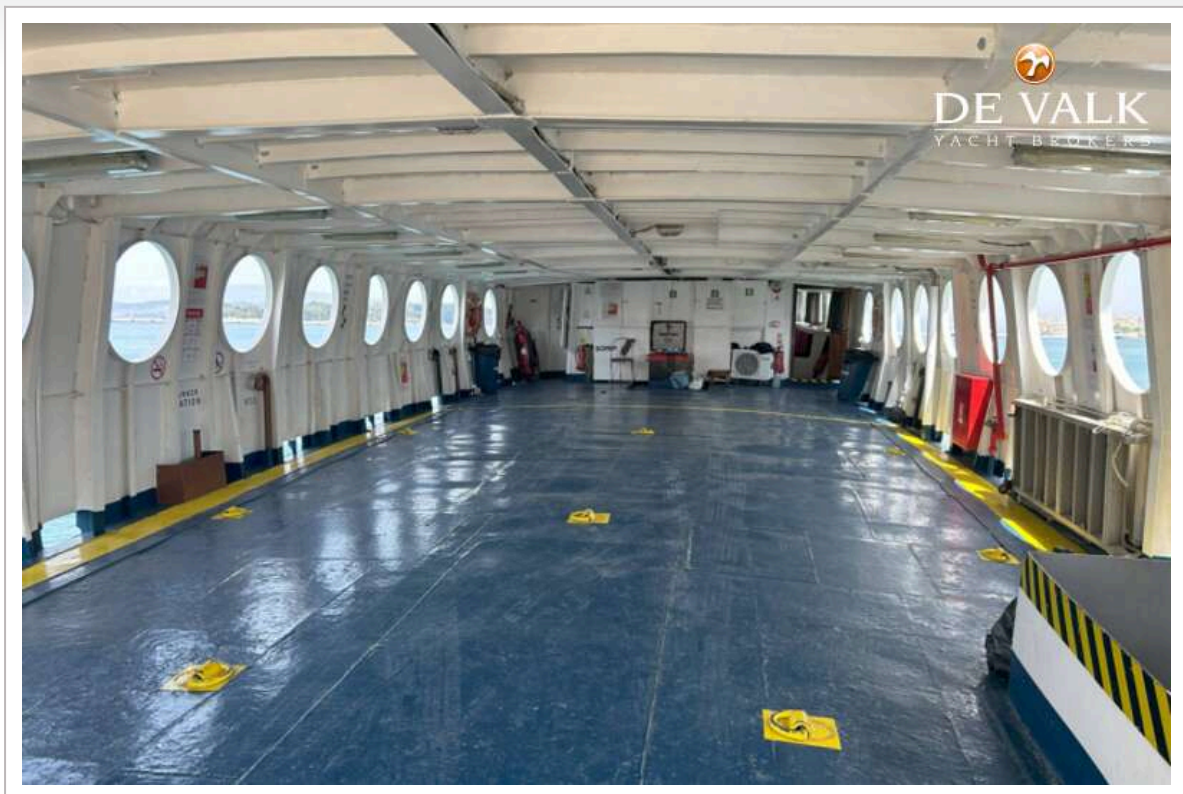
CAR/PASSENGERS FERRY 33



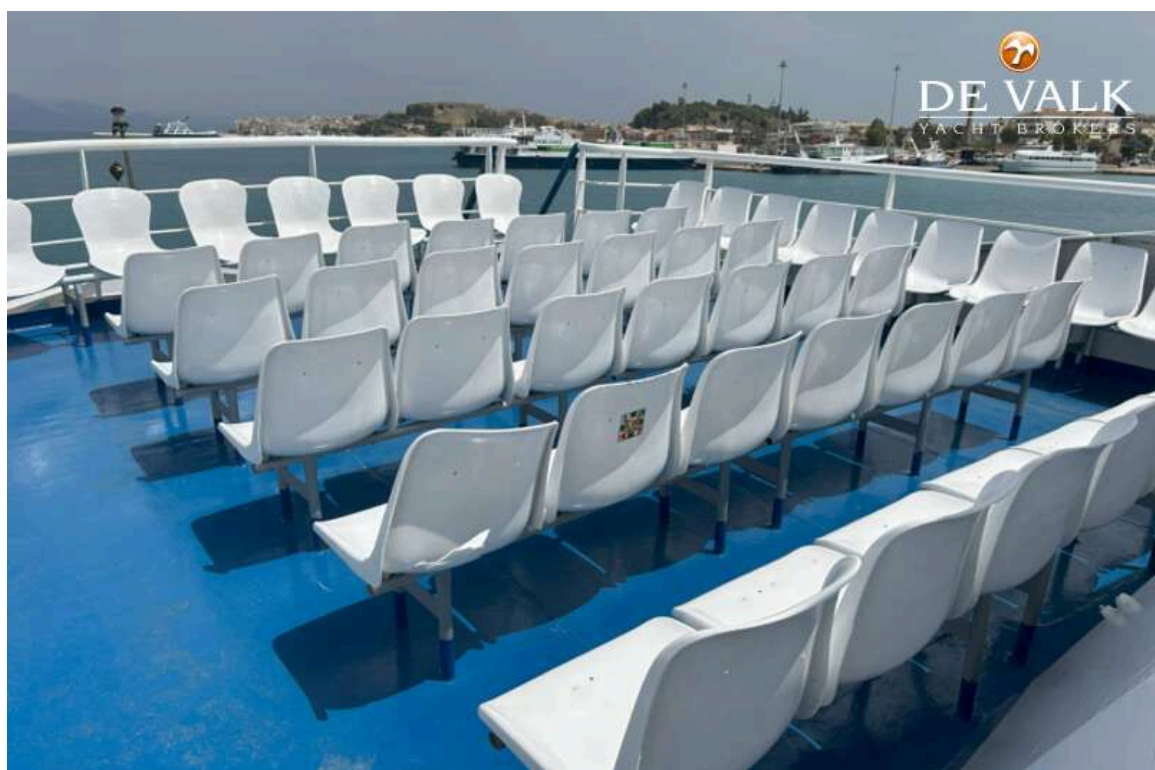
CAR/PASSENGERS FERRY 33



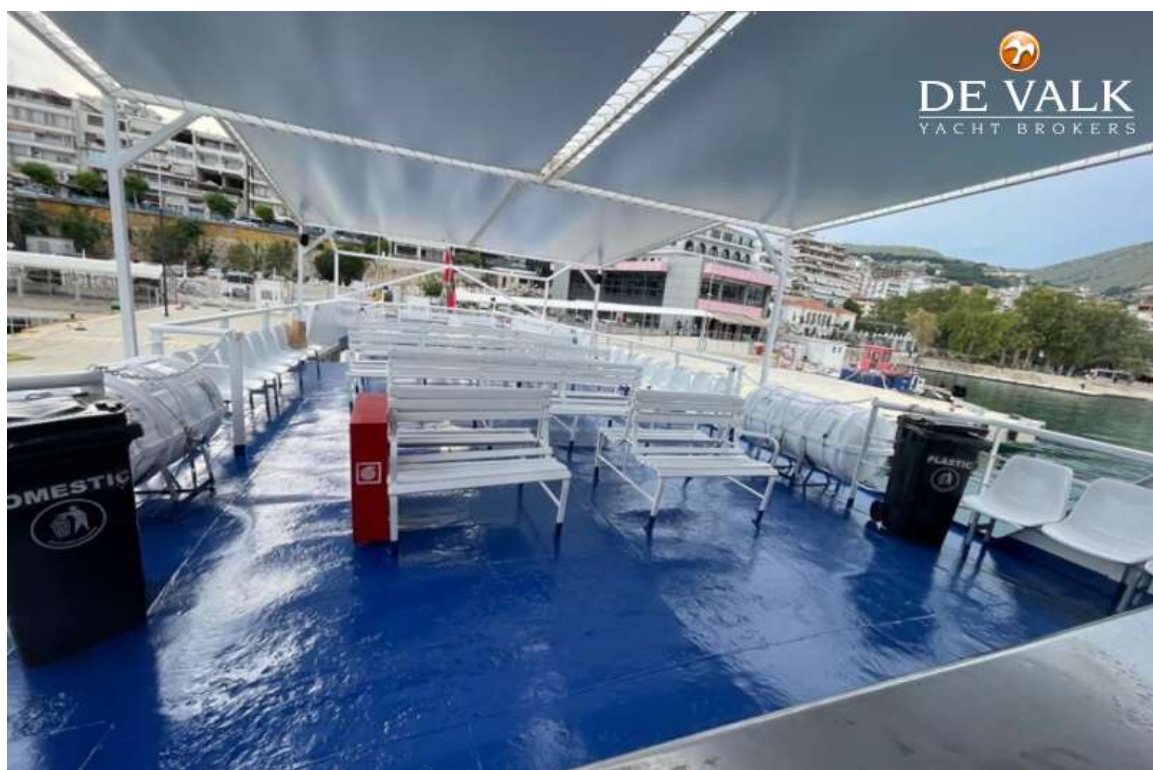
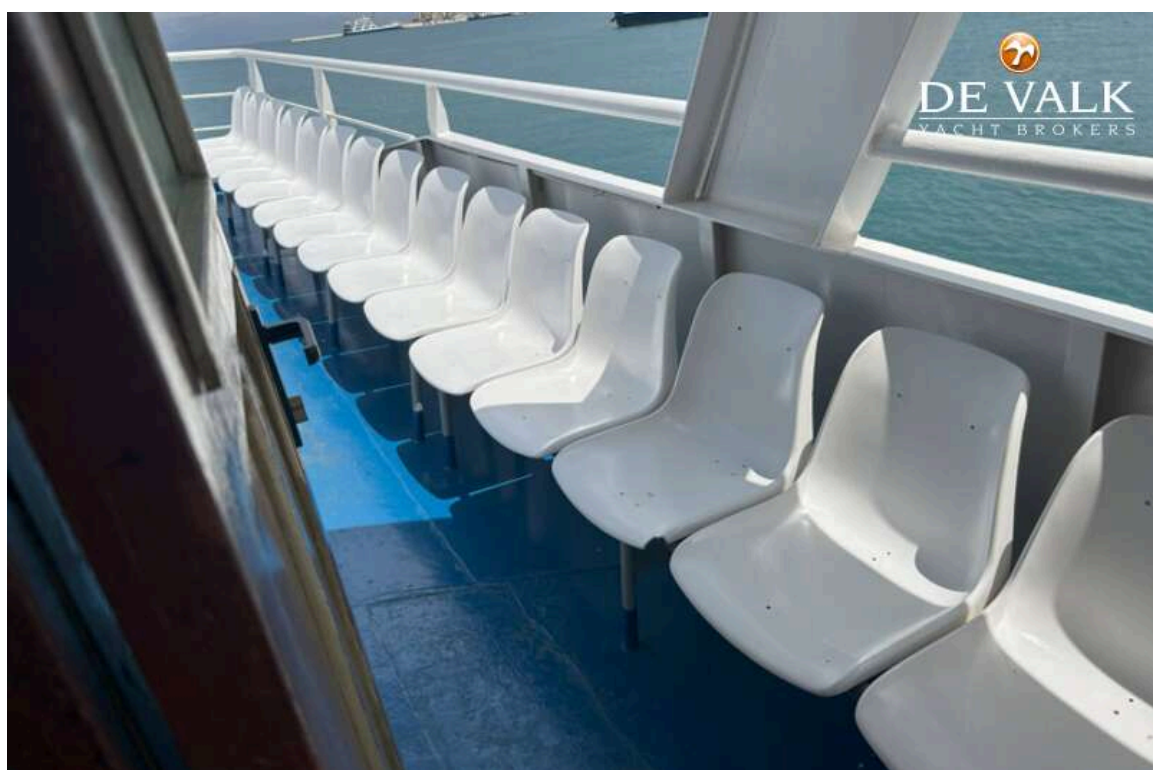
CAR/PASSENGERS FERRY 33



CAR/PASSENGERS FERRY 33



CAR/PASSENGERS FERRY 33

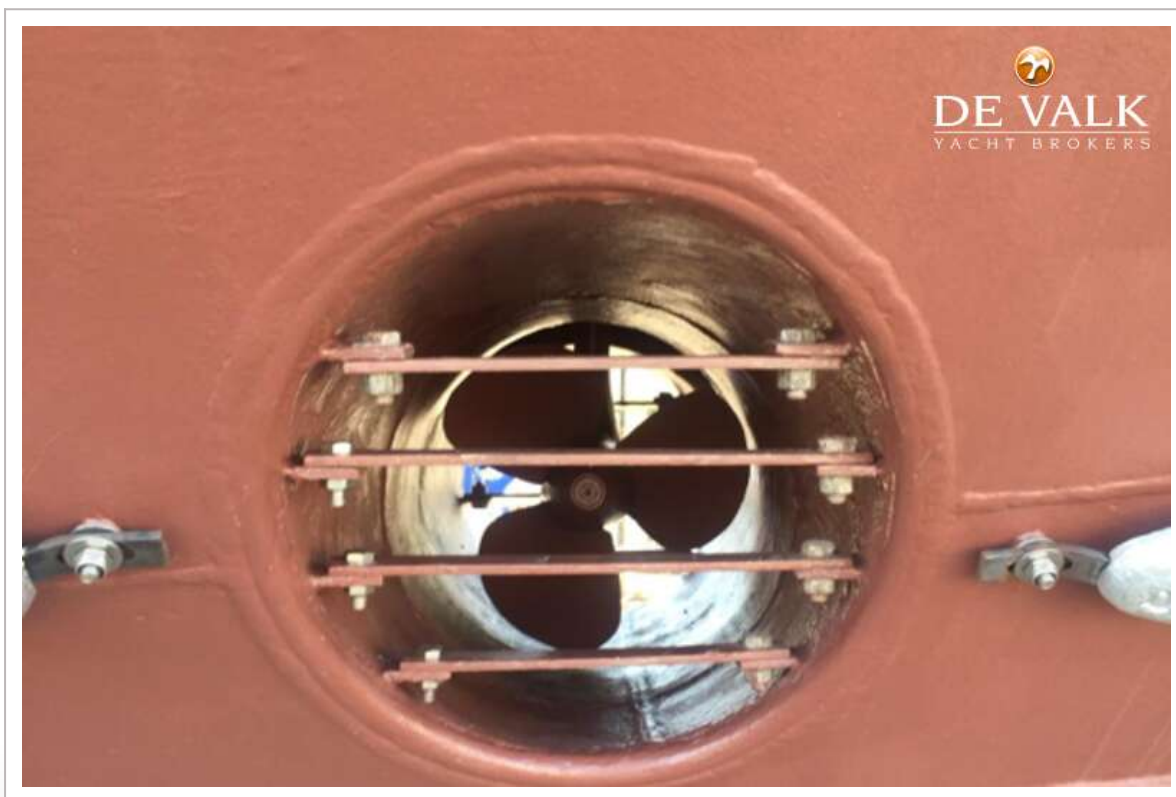


CAR/PASSENGERS FERRY 33

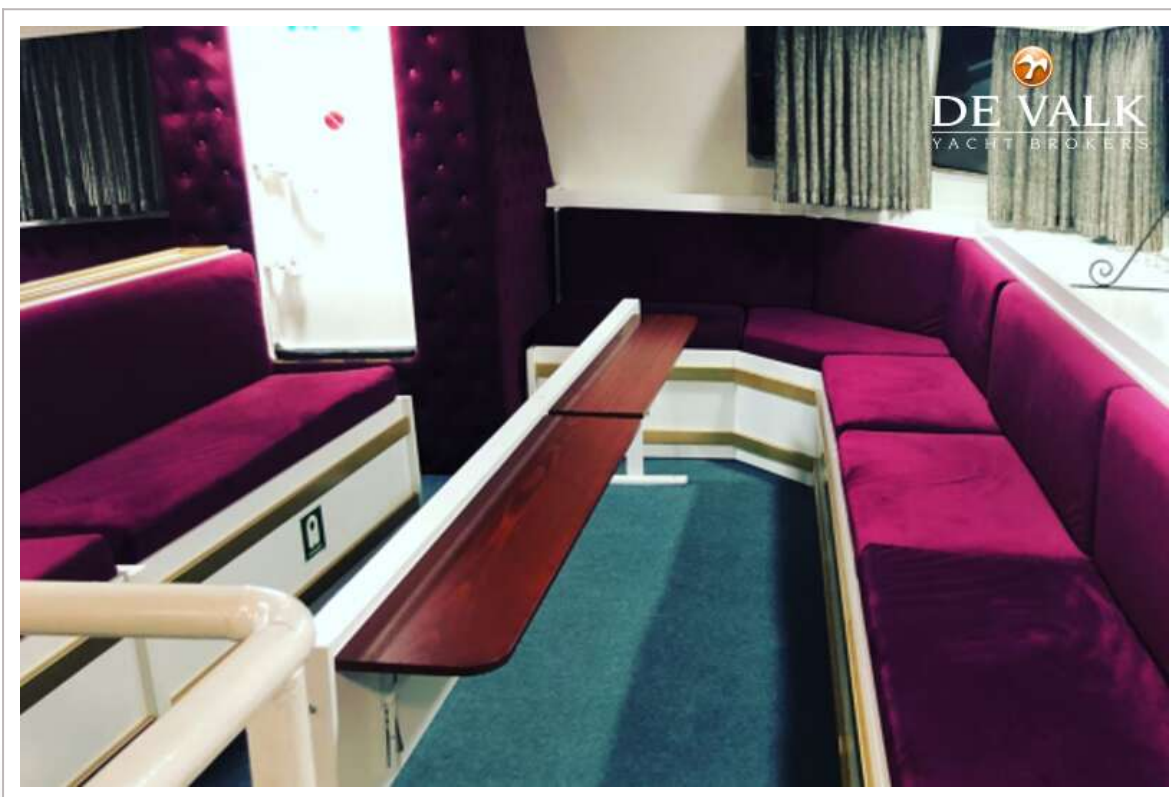


CAR/PASSENGERS FERRY 33





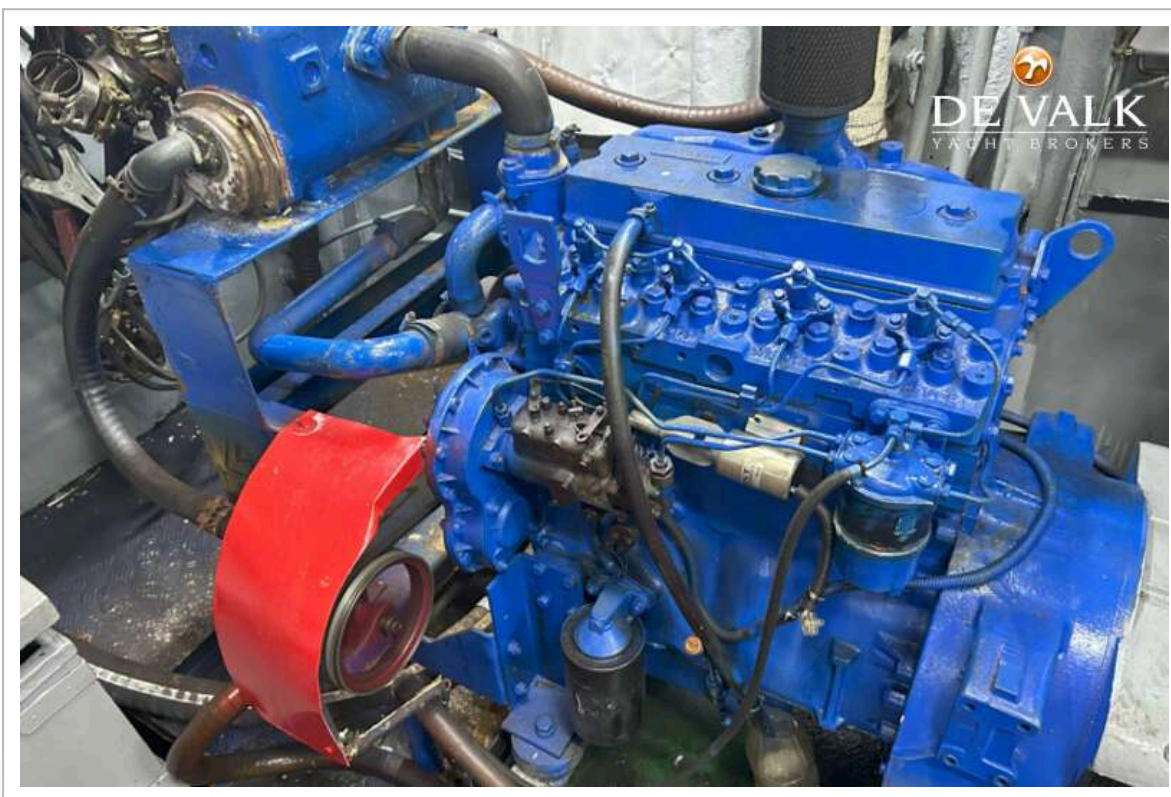
CAR/PASSENGERS FERRY 33

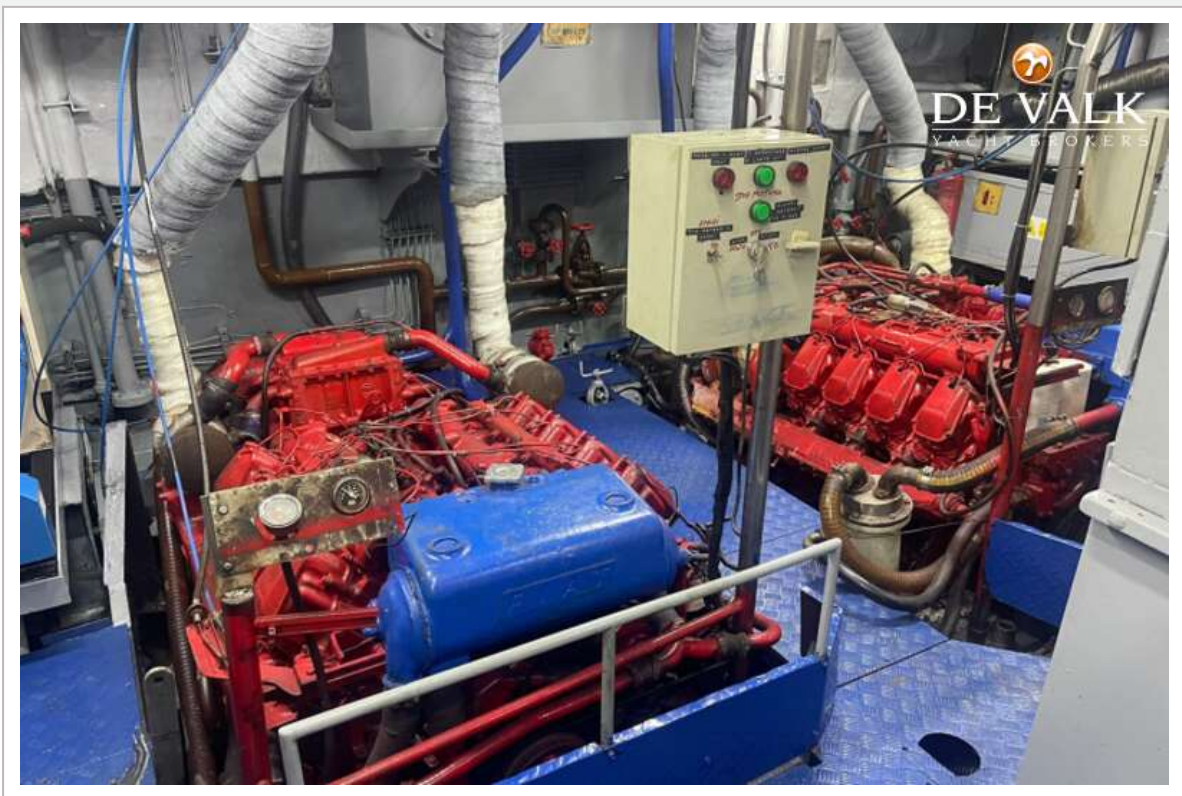


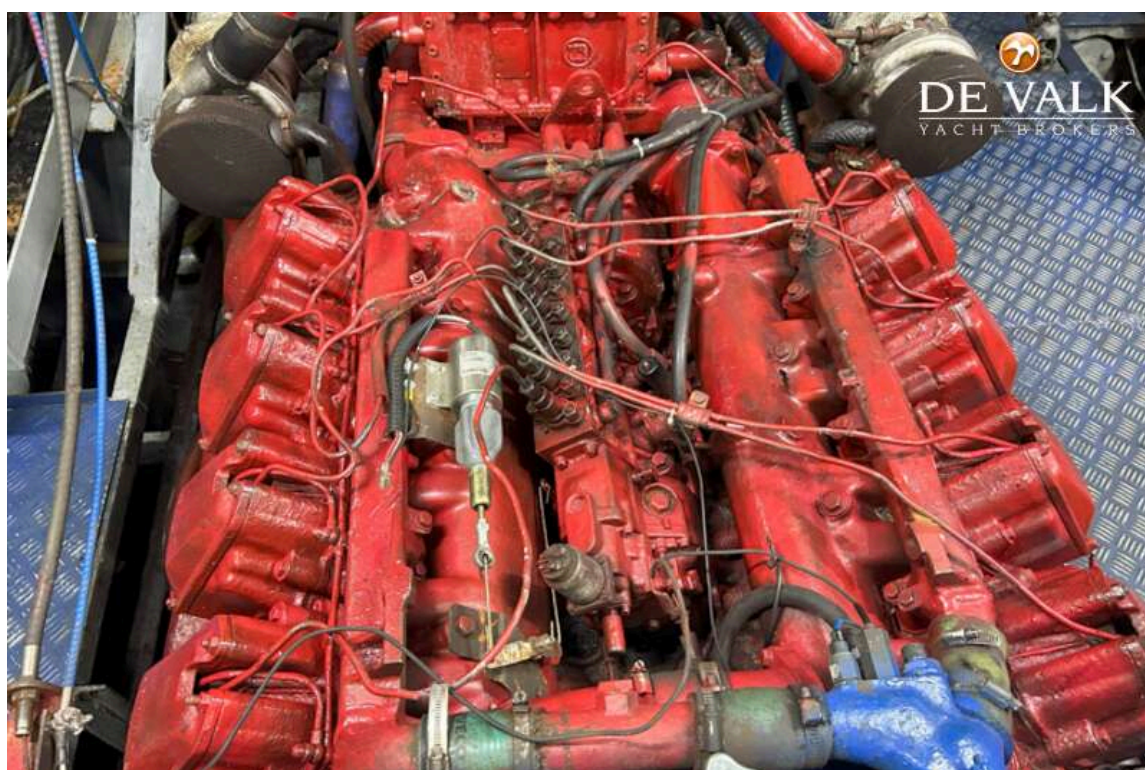
CAR/PASSENGERS FERRY 33



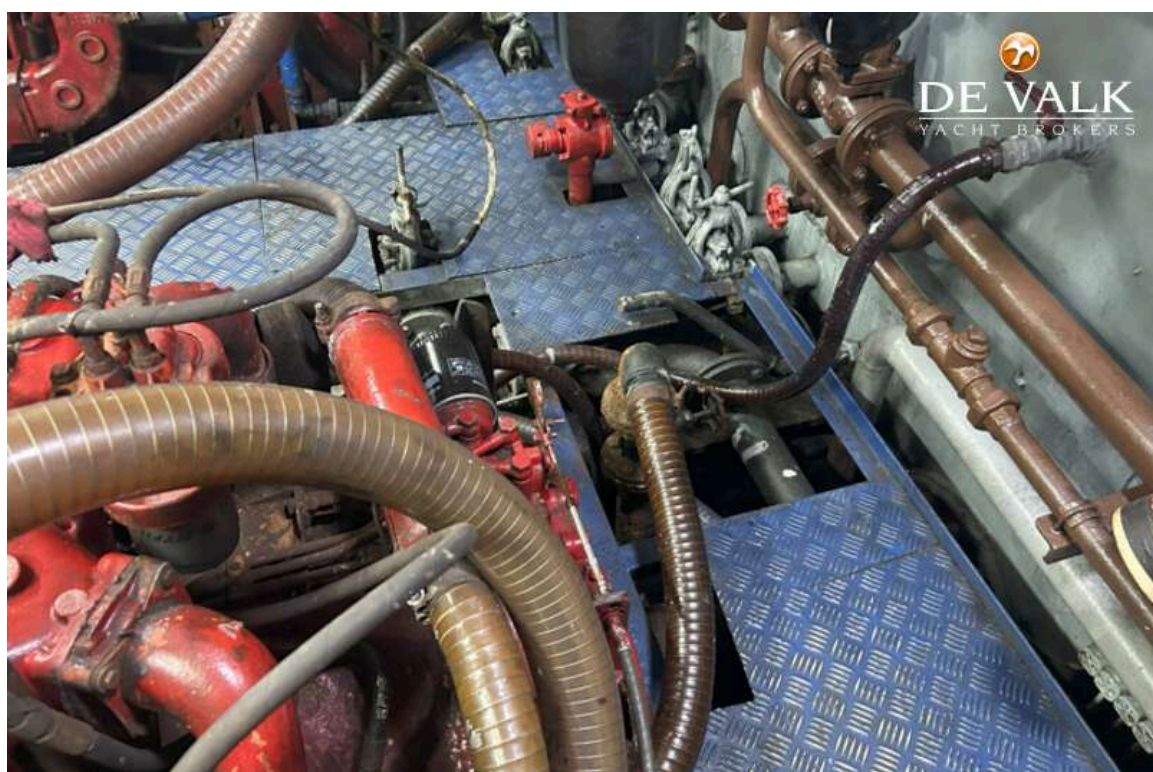
CAR/PASSENGERS FERRY 33

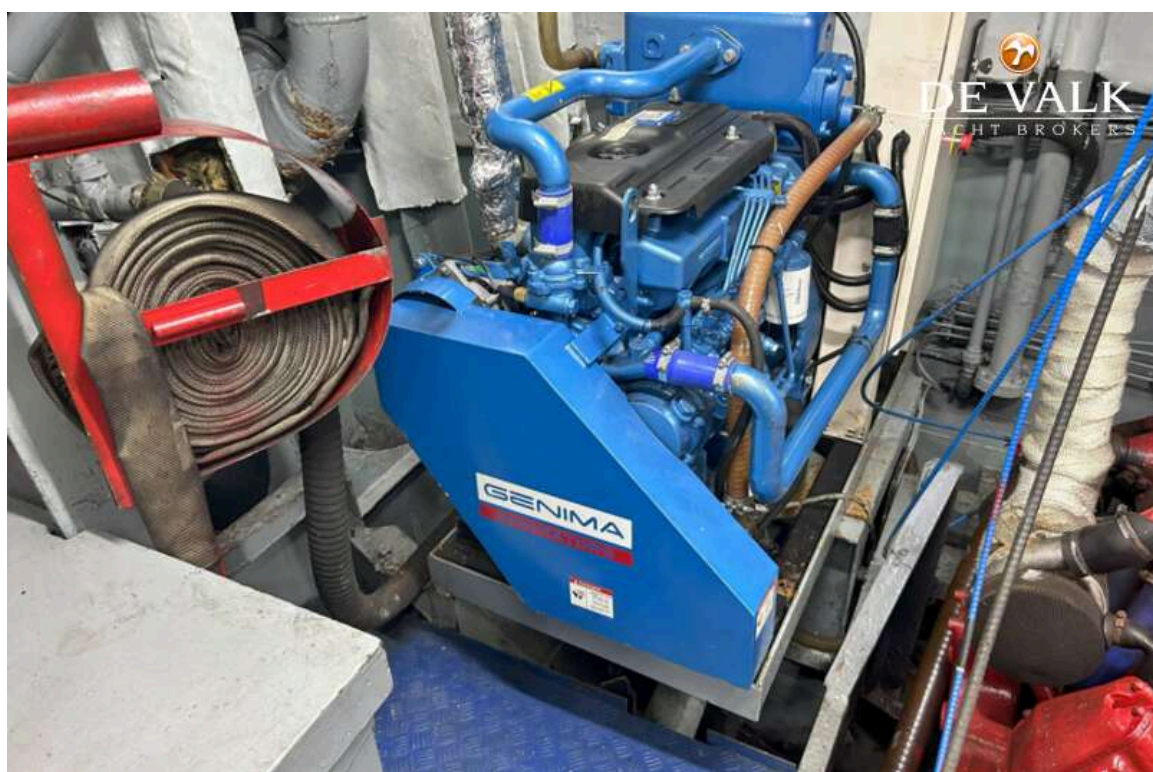


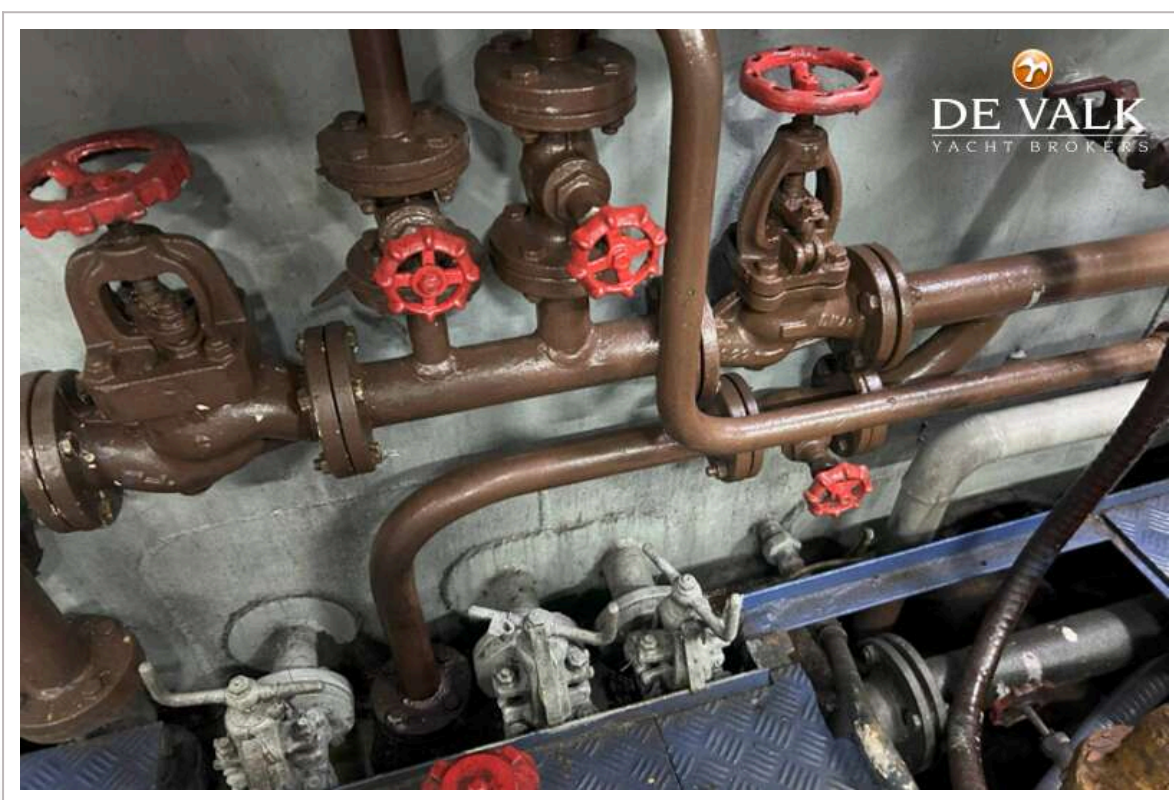


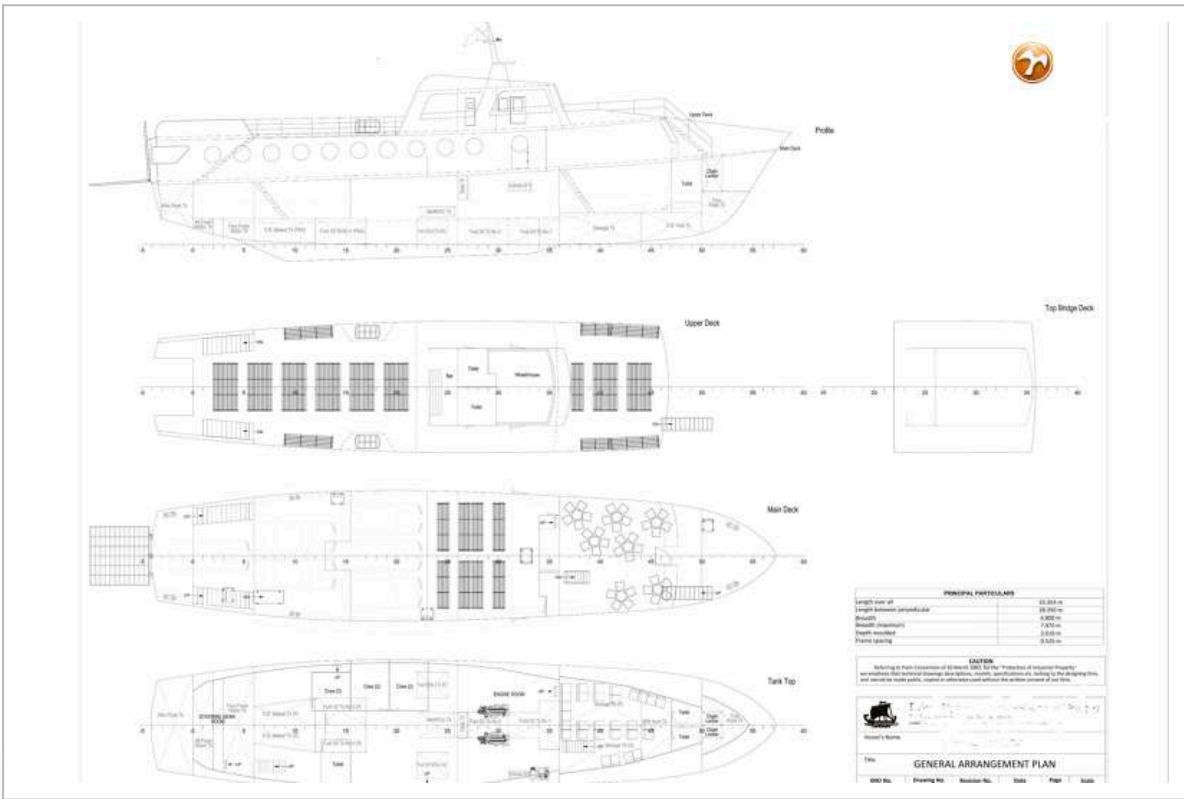




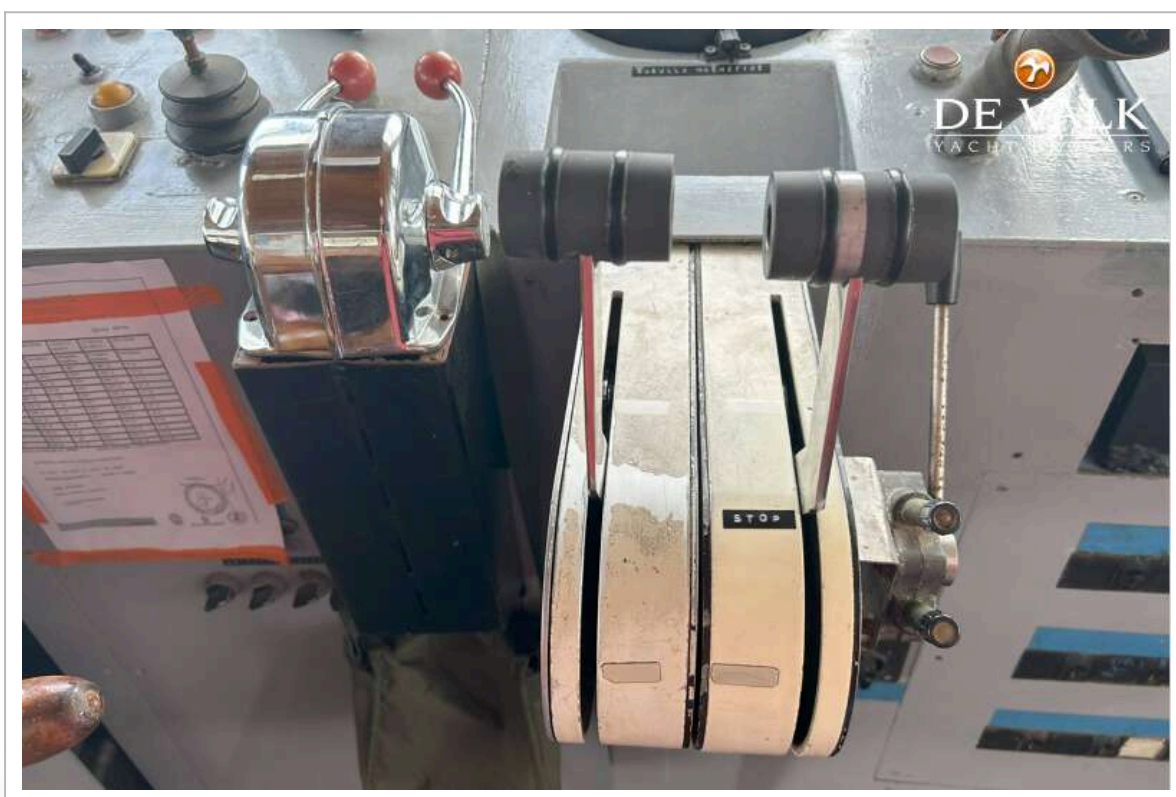




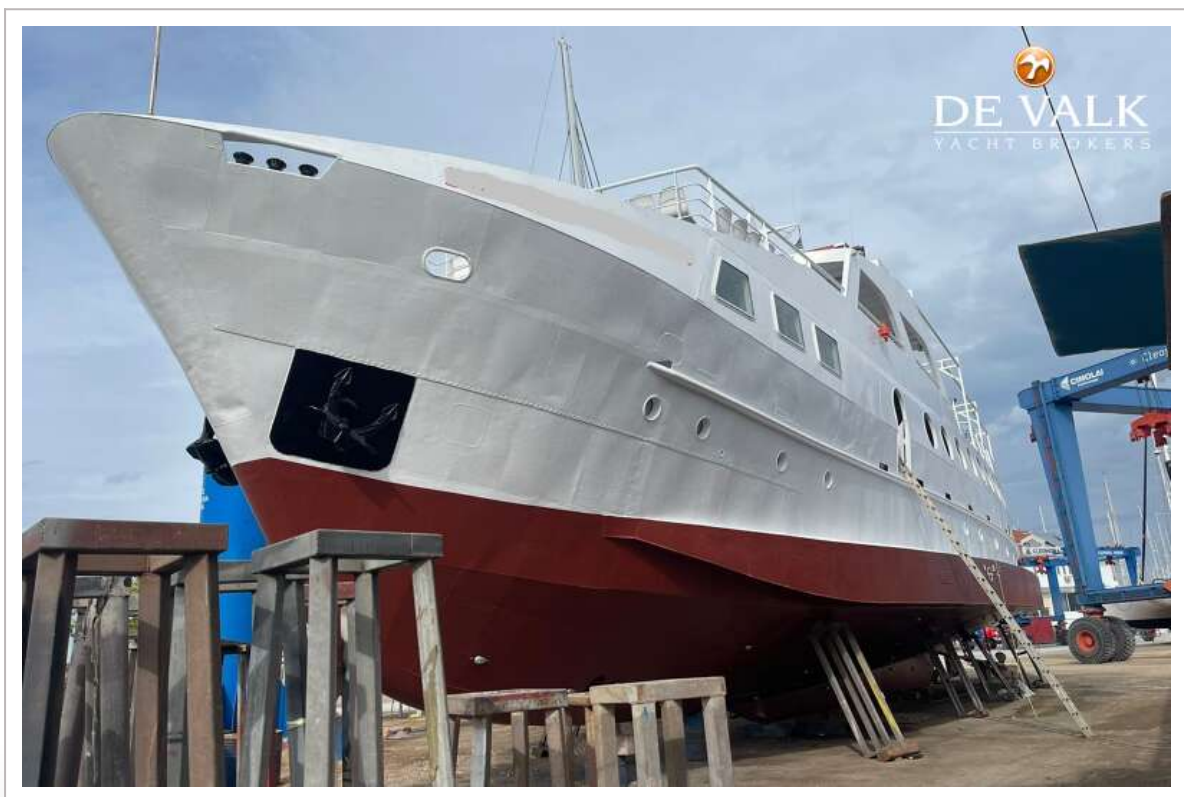




CAR/PASSENGERS FERRY 33



CAR/PASSENGERS FERRY 33



CAR/PASSENGERS FERRY 33

