



DE VALK
YACHT BROKERS



FALCON 71



DE VALK
YACHT BROKERS

BROKER'S COMMENTS

Spacious motor yacht with vintage appearance and modern interior. Very suitable as a "live aboard". Two spacious cabins, one with large bathroom and even bigger walk-in closet, the other with ensuite bathroom. Heating and modernized galley. Spacious living at deck height with good views all around and a very spacious flybridge / roof terrace with beautiful views.

Marc Weijenberg

SPECIFICATIONS

Dimensions	21.70 x 5.70 x 1.50 (m)	Builder	Versilcraft Cantieri Navale
Built	1992	Cabins	3
Material	GRP	Berths	6
Engine(s)	2 x Detroit Diesel 12V71T diesel	Hp/Kw	2 x 870.00 (hp), 640.32 (kw)
Asking price	sold (VAT)	Lying	The Netherlands

CONTACT

Sales office	De Valk Thuishaven	Telephone	+31 35 5829042
Address	Peperstraat 7 1411 PX Naarden NL	E-mail	thuishaven@devalk.nl

DISCLAIMER

These particulars are given in good faith as supplied but cannot be guaranteed.



GENERAL

Model	FALCON 71
Type	motor yacht
LOA (m)	21,70
Beam (m)	5,70
Draft (m)	1,50
Headroom (m)	2,00
Year built	1992
Builder	Versilcraft Cantieri Navale
Country	Italy
Designer	Versilcraft
Displacement (t)	45
Hull material	GRP
Hull colour	white
Hull shape	Fast Displacement Hull
Superstructure material	GRP
Rubbing strake	stainless steel
Deck material	GRP
Deck finish	teak
Cockpit deck finish	teak
Window frame	stainless steel
Window material	tempered glass
Portholes	stainless steel
Insulation	rockwool
Flybridge	Large (6 x 3 mtr) flybridge area with outside helmposition, dinette, seating etc.
Radar arch	non collapsible
Fuel tank (litre)	GRP 5800
Freshwater tank (litre)	GRP 1820 (in 3 tanks)
Inside helm position	hydraulic
Flybridge helm position	hydraulic
Emergency tiller	yes



Extra info	The condition of the yacht is reflected in the askingprice. Upon delivery the engines are in working condition.
Extra info	CVO/CBB certified till August 2025
Extra info	Teakdeck is glued (no screws/wooden dowls)

ACCOMMODATION

Cabins	3
Berths	6
Crew cabin	1 (one of the 3 cabins)
Crew berths	2
Interior	Modern white
Floor	vinyl
Open cockpit	Large open cockpit area (3,50 x 5,30 mtr)
Pilot house	with desk area
Saloon	Large saloon (4,60 x 3,60 mtr) with lounge seat and dining table.
Headroom saloon (m)	2,00 - 1,95
Heating	electric 220V Infra red panels
Heating 2	diesel ducted hot air (bathroom/badkamer/badezimmer)
Sliding door to cockpit	yes
Galley	U-shape
Sink	1 x
Cooker	Whirlpool 4 burner (induction) 220v
Extractor	yes
Microwave/oven combi	Ikea/combi plus grill (220v)
Fridge	220v
Freezer	220v
Hot water system	yes
Water pressure system	electrical
Owners cabin	yes
Bed length (m)	1,90 x 1,80 mtr, headroom; 2,00 mtr
Wardrobe	walk-in closet



Bathroom	en suite I
Toilet	en suite Sanimarin
Toilet system	electric
Wash basin	yes
Bath tub	yes
Guest cabin 1	double bed
Bed length (m)	1,90 x 1,70 mtr, headroom: 1,98 mtr.
Wardrobe	hanging/drawers/shelves
Bathroom	en suite II
Toilet	Sanimarin
Toilet system	electric
Wash basin	in the bathroom
Shower	en suite
Washing machine	Bosch Series 4 Variopure Eco (220v)
Dryer	Bosch Series 4 (220v)
Flybridge	compagnionway from pilothouse
Wet bar	yes

MACHINERY

No of engines	2
Make	Detroit Diesel
Type	12V71T
HP	870
kW	640.32
Fuel	diesel
Year installed	1992
Engine hours	1600
Engine cooling system	freshwater heat exchanger
Drive	shaft
Engine controls	hydraulic
Gearbox	hydraulic ZF



Bowthruster	electric Vetus
Exhaust	watercooled
Propeller type	fixed
Propeller blades	4 x
Propeller shaft material	stainless steel
Shaft lubrication	water
Electric bilge pump	2 x with manifold
Electrical installation	24v/220v
Generator	silent separator Kohler 20 EFOZD (19kW / 1500rpm)
Running hours generator	2680
Start battery	2 x 12v (2024)
Service battery	2 x (12x2v) set
Generator battery	1 x with seperate charger
Battery charger	yes
Inverter	Mastervolt 24v/3500 watt
Shorepower	with cable

NAVIGATION

Compass	2 x (both need service)
Depth sounder	Furuno Navnet
VHF	Standard Horizon
Autopilot	AP 3002 (defect)
Rudder angle indicator	yes
Radar	Furuno Navnet
GPS	Furuno
Plotter	Furuno Navnet (no updated maps)
AIS transceiver	EM-Trak A100 AIS Class A Transceiver
Navigation lights	yes

EQUIPMENT

Bimini	on flybridge
---------------	--------------



Cockpit table	yes
Cockpit chairs	yes
Bathing platform	yes
Boarding ladder	stainless steel
Transom door	yes
Gangway	Opacmare (hydraulic)
Anchor	2 x
Anchor chain	2 x
Windlass	electrical Lofrans (24v)
Capstan	electrical Lofrans (24v)
Windlass aft	electrical
Deck crane	electric
Sea railing	yes
Pushpit	yes
Pulpit	yes
Life raft	yes
Wiper	3 x
Fenders	yes
Mooring lines	yes
TV	2 x (in aftcabin and salon)



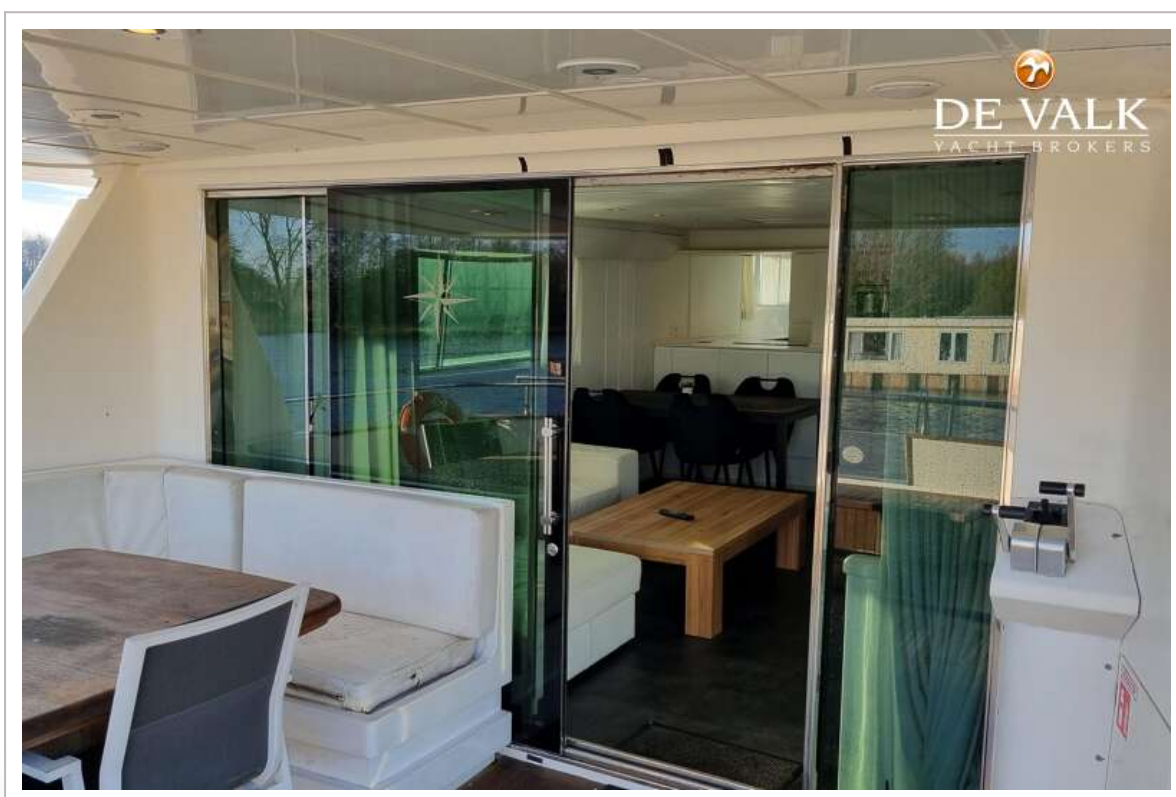
FALCON 71



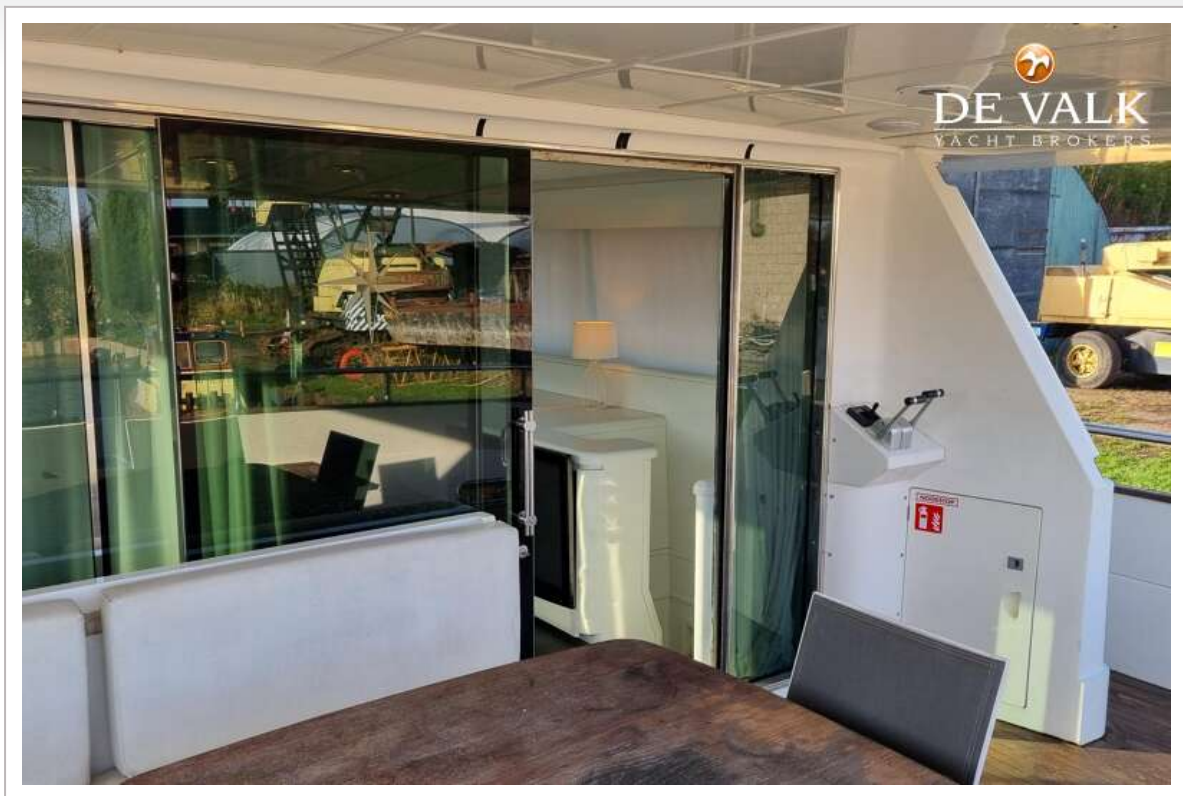
FALCON 71



FALCON 71



FALCON 71



FALCON 71

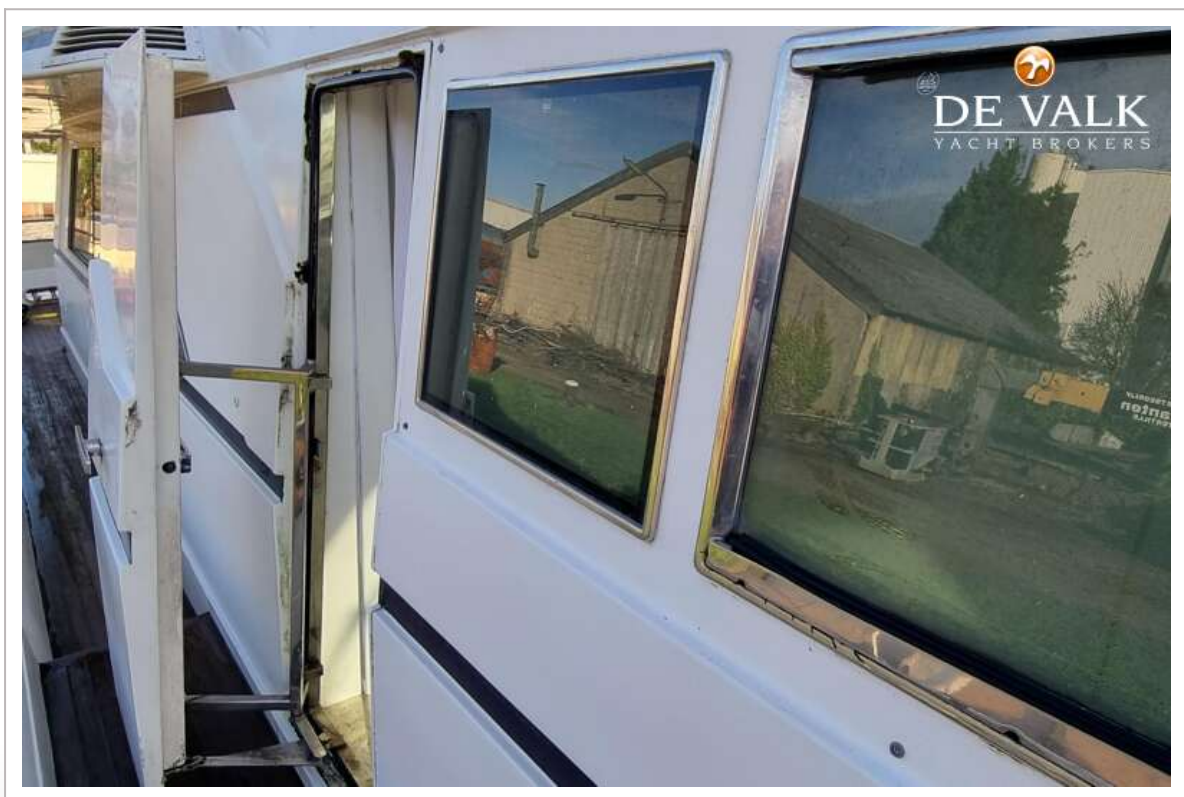
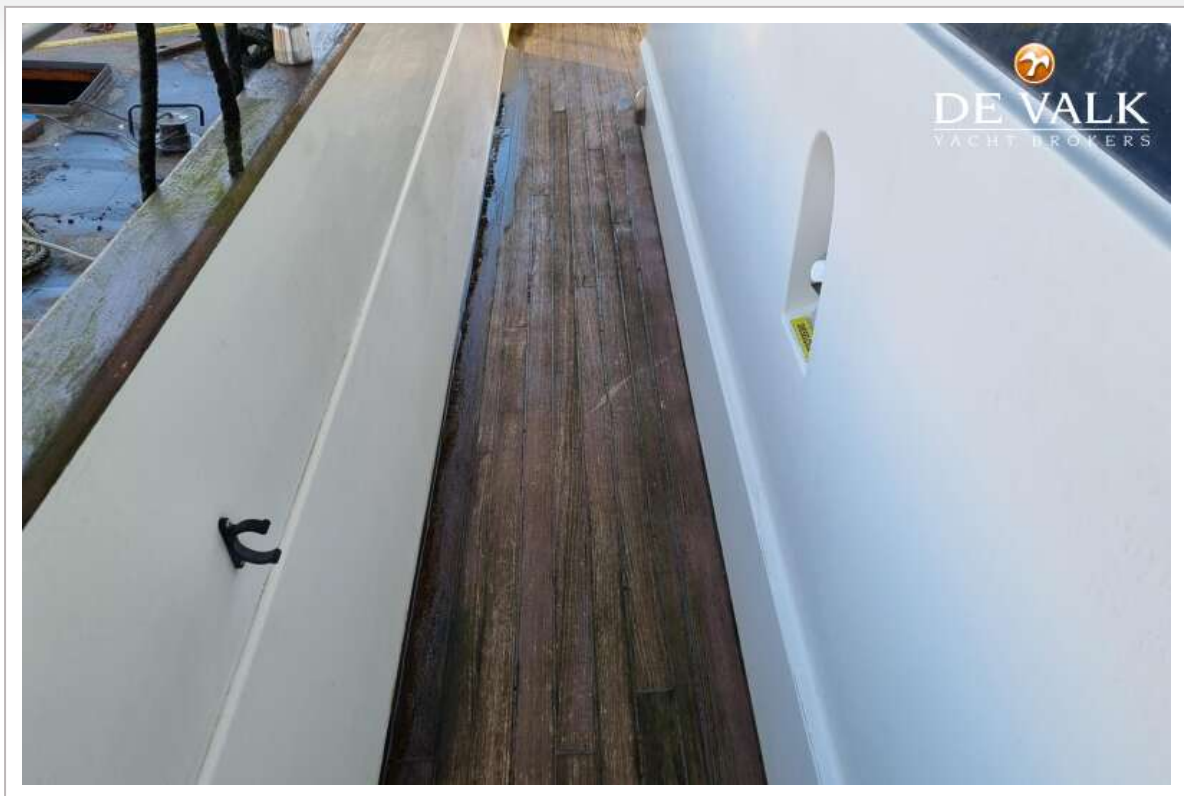


FALCON 71

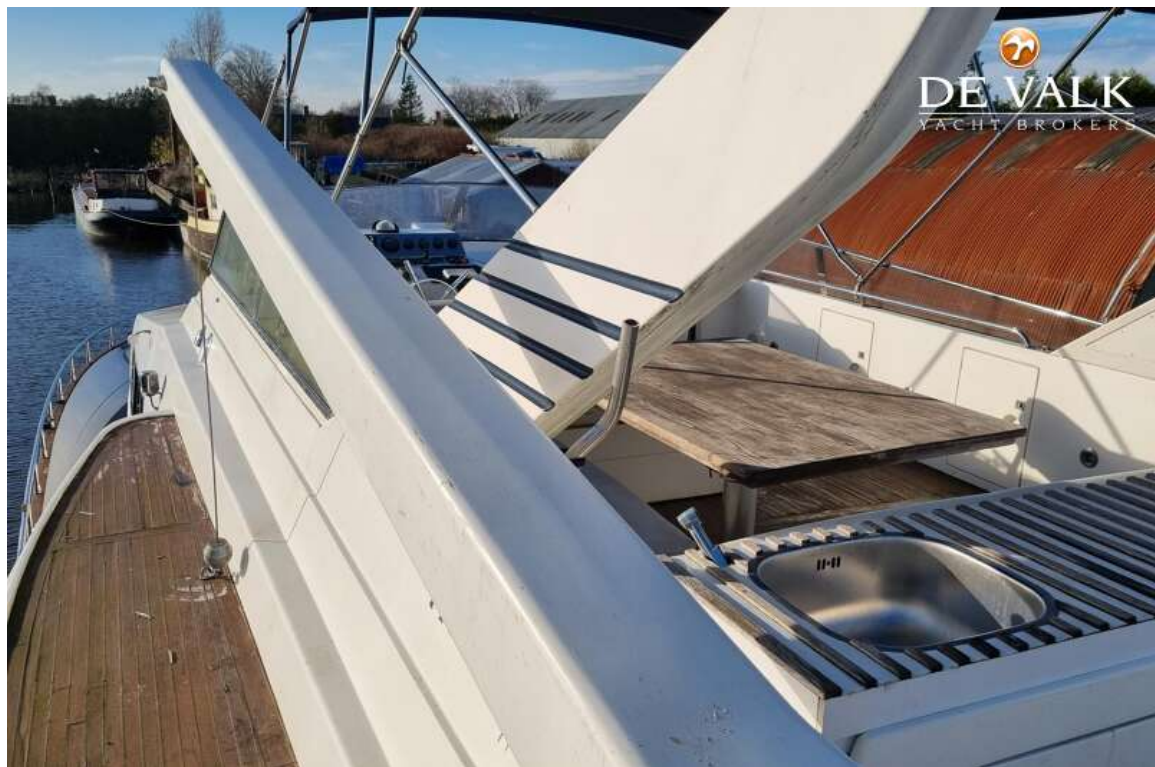


FALCON 71





FALCON 71



FALCON 71



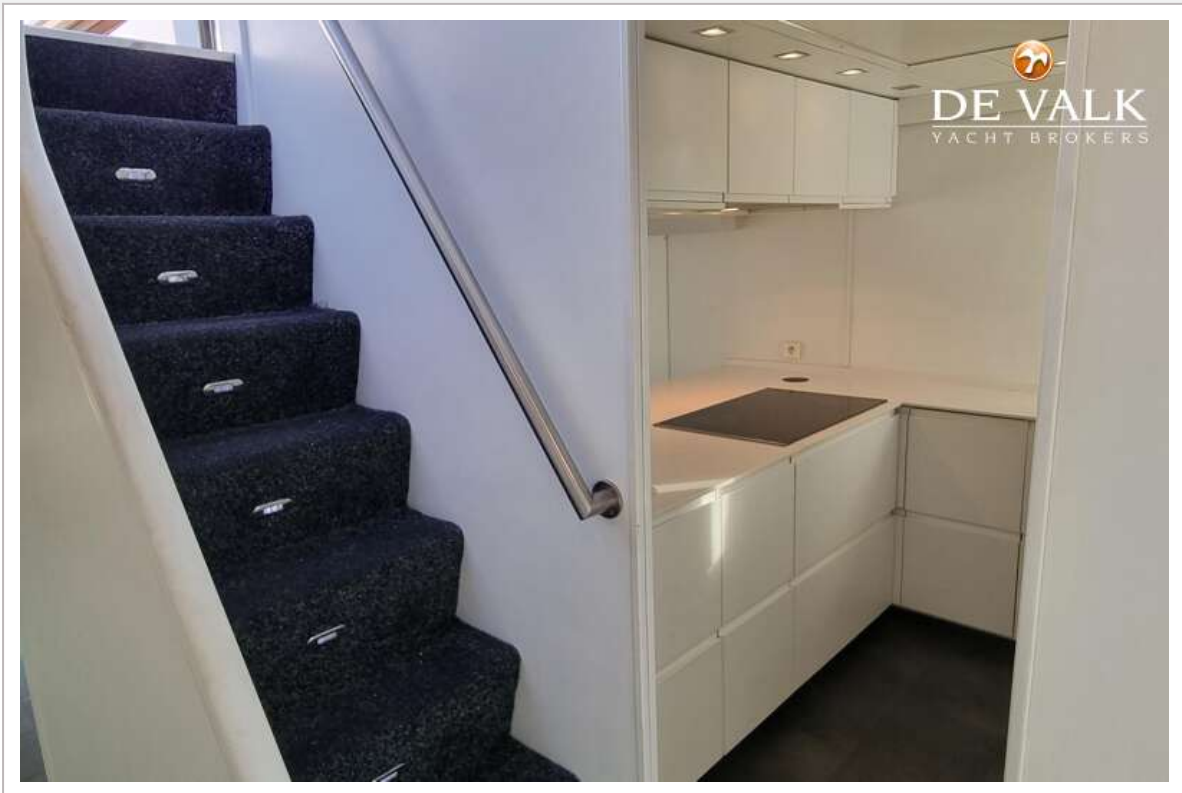
FALCON 71



FALCON 71



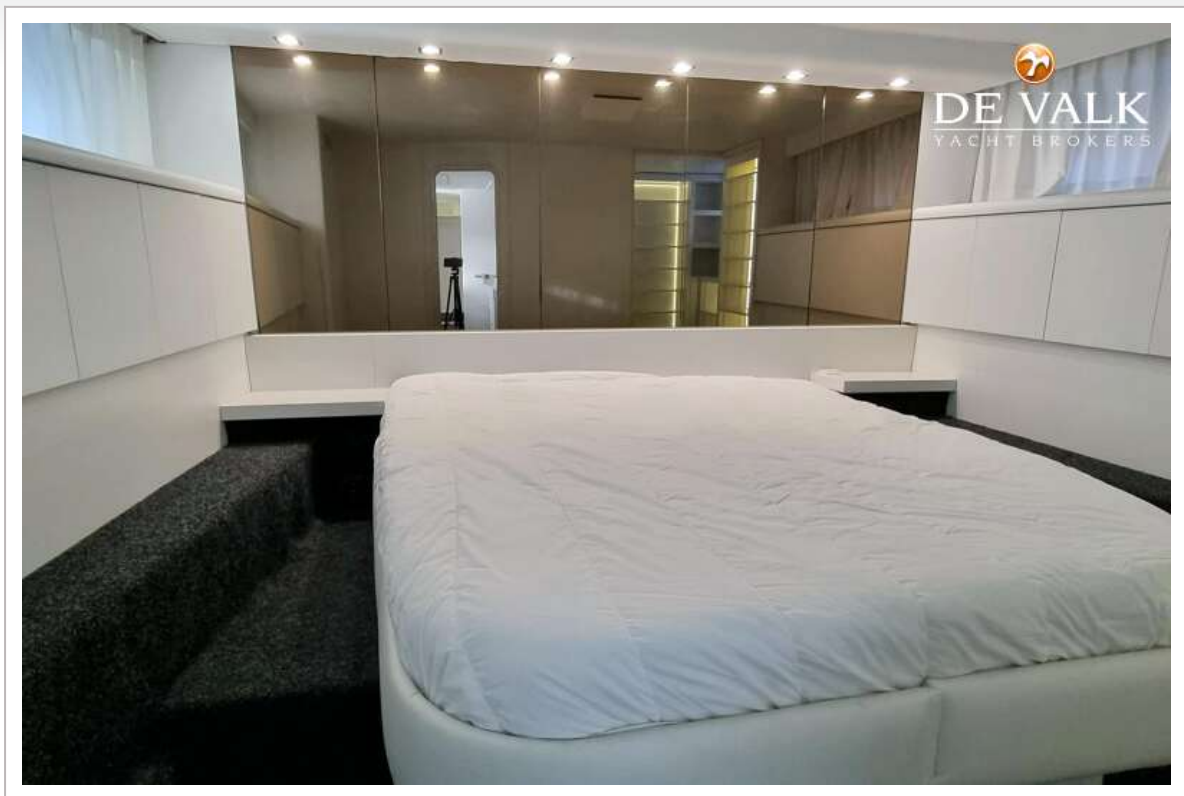
FALCON 71



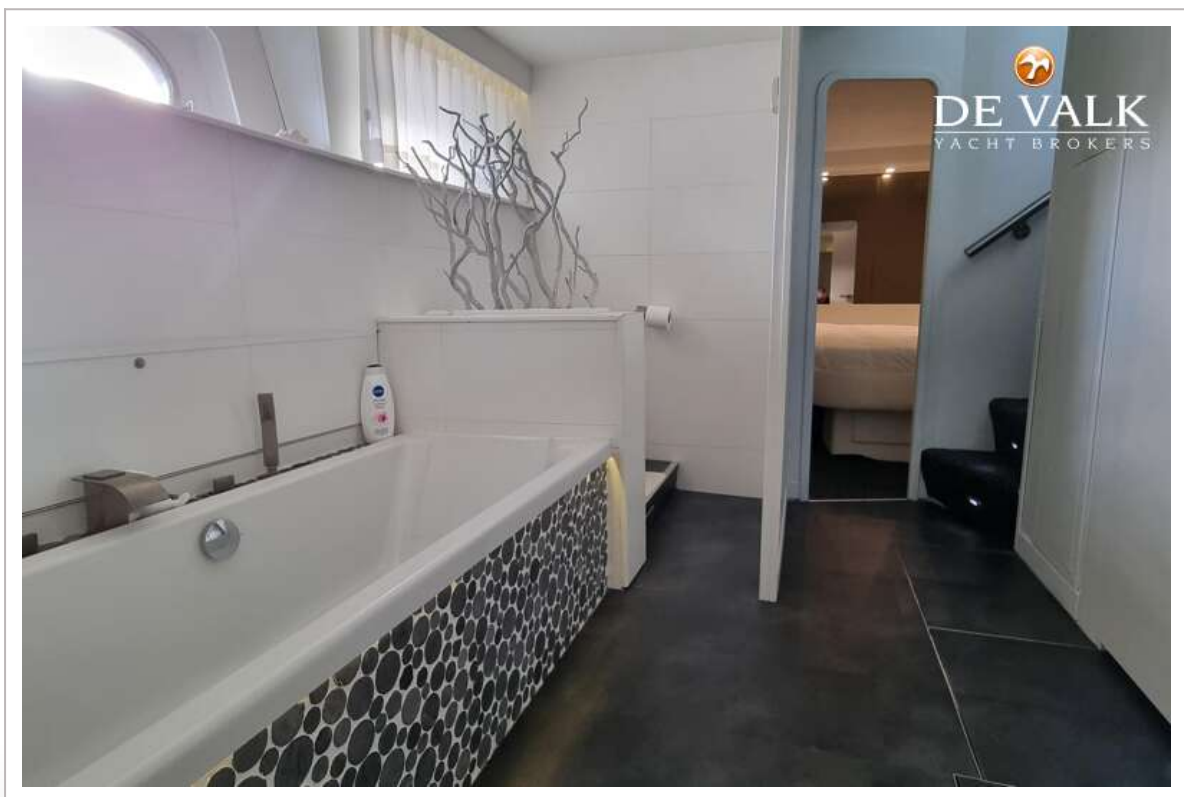
FALCON 71



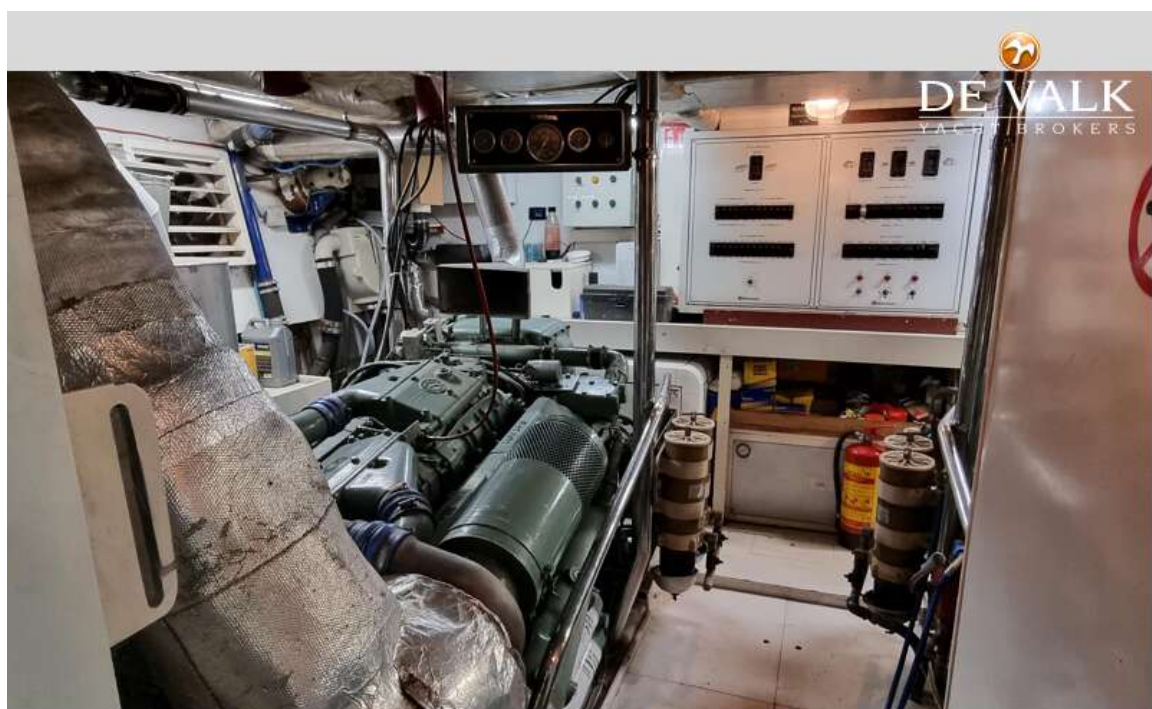
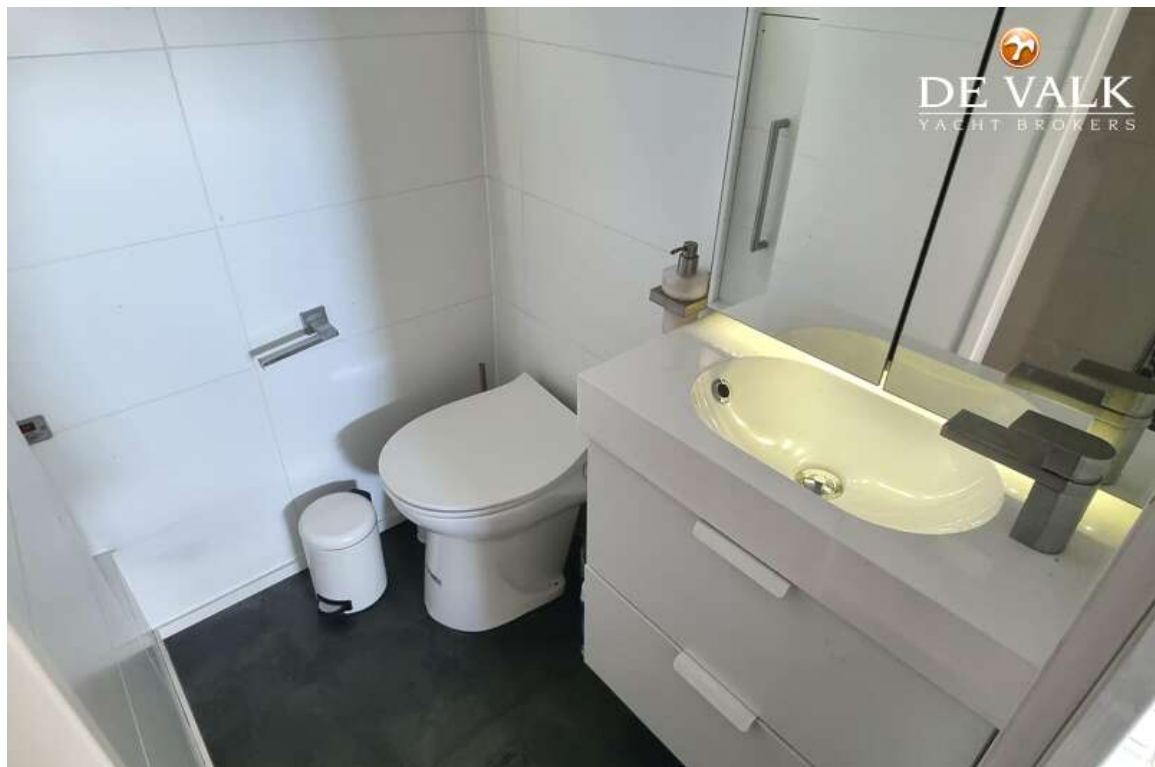
FALCON 71











FALCON 71



