



## BAVARIA 37-3



## BROKER'S COMMENTS

Well-equipped Bavaria 37 Cruiser from her second owner. Good sailing performance and handling thanks to the easy-to-handle Elvström sails from the cockpit, so ideal for short-handed sailing. The Bavaria 37 Cruiser offers plenty of storage space below and on deck. The 3-cabin layout makes the boat very spacious with plenty of storage space. Now ready to admired and inspected 6 days a week at our sales marina in Hindeloopen.

*Johan Nooitgedagt*

## SPECIFICATIONS

<b>Dimensions</b>	11.55 x 3.68 x 1.85 (m)	<b>Builder</b>	Bavaria Giebelstadt
<b>Built</b>	2002	<b>Cabins</b>	3
<b>Material</b>	GRP	<b>Berths</b>	7
<b>Engine(s)</b>	1 x Volvo Penta MD2030 diesel	<b>Hp/Kw</b>	29.00 (hp), 21.34 (kw)
<b>Asking price</b>	sold (VAT )	<b>Lying</b>	at sales office

## CONTACT

<b>Sales office</b>	De Valk Hindeloopen B.V.	<b>Telephone</b>	+31 514 52 40 00
<b>Address</b>	Oosterstrand 1 8713 JS Hindeloopen NL	<b>E-mail</b>	hindeloopen@devalk.nl

## DISCLAIMER

These particulars are given in good faith as supplied but cannot be guaranteed.



## GENERAL

Model	BAVARIA 37-3
Type	sailing yacht
LOA (m)	11,55
LWL (m)	8,95
Beam (m)	3,68
Draft (m)	1,85
Air draft (m)	16,20
Headroom (m)	1,80
Year built	2002
Launched	2002
Builder	Bavaria Giebelstadt
Country	Germany
Displacement (t)	5,5
Ballast (tonnes)	cast iron 1,8
Gross tonnage	6850
CE norm	A
Hull material	GRP
Hull colour	white
Hull shape	round-bilged
Keel type	fin keel
Superstructure material	GRP
Rubbing strake	aluminum
Deck material	GRP
Deck finish	teak
Cockpit deck finish	teak
Antifouling (year)	2022
Window frame	stainless steel
Window material	polycarbonate
Fuel tank (litre)	polyethylene
Level indicator (fuel tank)	yes



Freshwater tank (litre)	polyethylene
Wheel steering	mechanical
Emergency tiller	yes

## ACCOMMODATION

Cabins	3
Berths	7
Interior	mahogany
Floor	woodprint
Open cockpit	yes
Aft deck	yes
Saloon	yes
Headroom saloon (m)	1,85 mtr.
Heating	diesel ducted hot air 2022
Aft Cabin	yes
Galley	yes
Countertop	corian
Sink	stainless steel
Cooker	calor gas
Fridge	yes
Hot water system	220V + engine Boiler 2021
Water pressure system	electrical
Owners cabin	v-bed Front
Bed length (m)	2022 Matresses 2.1 mtr.
Wardrobe	drawers and shelves
Bathroom	separate
Toilet	separate
Toilet system	manual
Wash basin	at the toilet
Guest cabin 1	double bed Rear
Bed length (m)	2022 Matresses 2.1 mtr.



Wardrobe	drawers and shelves
Guest cabin 2	double bed Rear
Bed length (m)	2022 Matrasses 2.1 mtr.
Wardrobe	drawers and shelves

## MACHINERY

No of engines	1
Make	Volvo Penta
Type	MD2030
HP	29
kW	21.34
Fuel	diesel
Maximum speed (kn)	7,5
Cruising speed (kn)	6,5
Consumption (l/hr)	3
Engine cooling system	freshwater heat exchanger
Drive	sail-drive
Engine controls	bowden cable
Gearbox	mechanical
Bowthruster	electric
Gearbox	mechanical
Propeller type	folding
Propeller blades	2
Manual bilge pump	yes
Electric bilge pump	yes
Start battery	2023 Exide 62 Ah
Service battery	2x 140 Ah
Bowthruster battery	2022 2x 55ah
Battery charger	yes
Shorepower	with cable



## NAVIGATION

Compass	Plastimo on steering pedestal
Depth sounder	Raytheon ST60 Tri data
Depth sounder/log	Raytheon ST60 Tri data
Log	Raytheon ST60 Tri data
Windset	Raytheon ST60 Wind
VHF	Raymarine
Autopilot	Raymarine ST 6002 with remote
Rudder angle indicator	Raymarine ST 6002
Plotter/GPS	Needs to be repaired
Navtex	Clipper Navtex
Navigation lights	Led
Extra info	Autopilot with remote

## EQUIPMENT

Sprayhood	2021 Dark blue
Sprayhood with grab rail	yes
Cockpit cover	2021 Dark blue
Bimini	2021 Dark blue
Cockpit table	yes
Boarding ladder	stainless steel
Anchor	CQR Plough
Grab rail (superstructure)	stainless steel
Pushpit	yes
Pulpit	yes
Radar reflector	yes
Fenders	yes
Mooring lines	yes
TV	2022 Salora
Radio-cd player	yes
Speakers in salon	yes



Speakers in cabin

yes

## RIGGING

Rigging

sloop

Standing rigging

wire 2021

Brand mast

Seldén

Material mast

aluminium

Spreaders

yes

Mainsail

yes

Stoway mast

yes

Genoa

yes

Reefing System

main in-mast furling

Backstay adjuster

tackle

Boomvang

gasspring

Genoa sheetwinches

2x Harken ST40

Halyard winches

2x Harken ST32

Spi-pole

aluminium Needs to be repaired



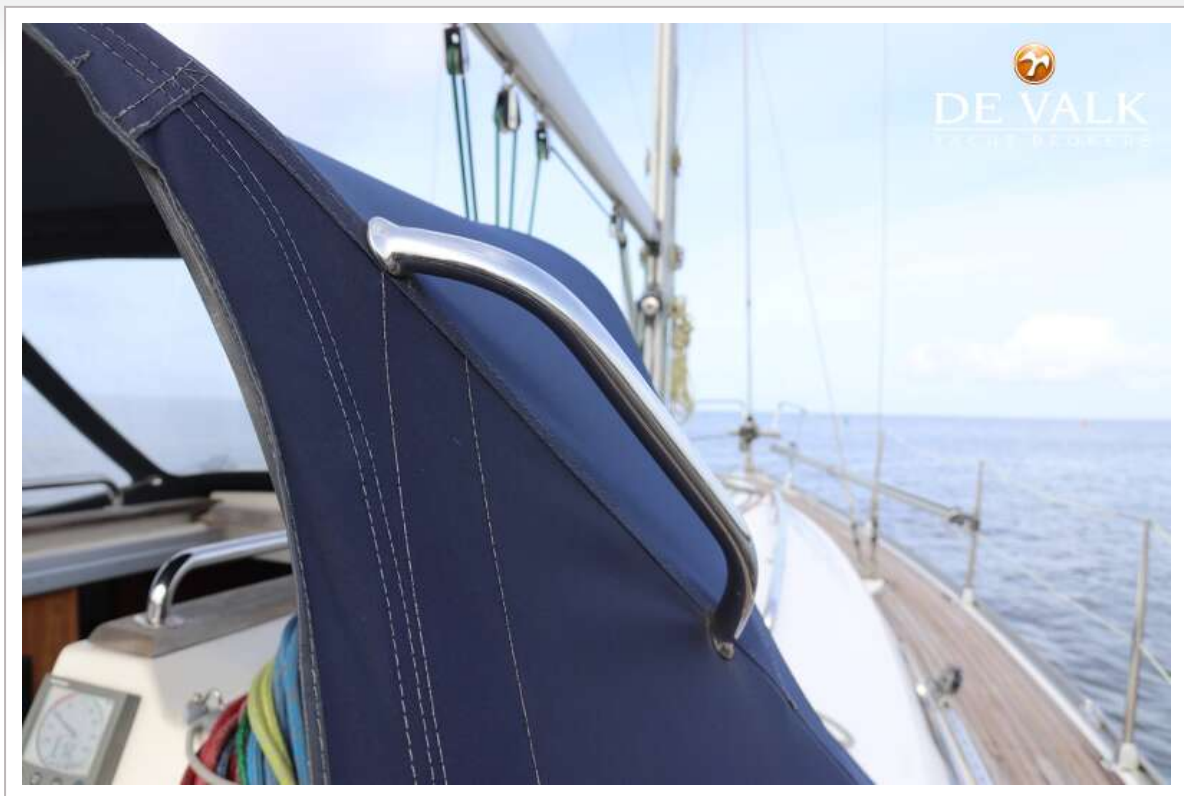
## BAVARIA 37-3





## BAVARIA 37-3





## BAVARIA 37-3





## BAVARIA 37-3



## BAVARIA 37-3





## BAVARIA 37-3



## BAVARIA 37-3





## BAVARIA 37-3





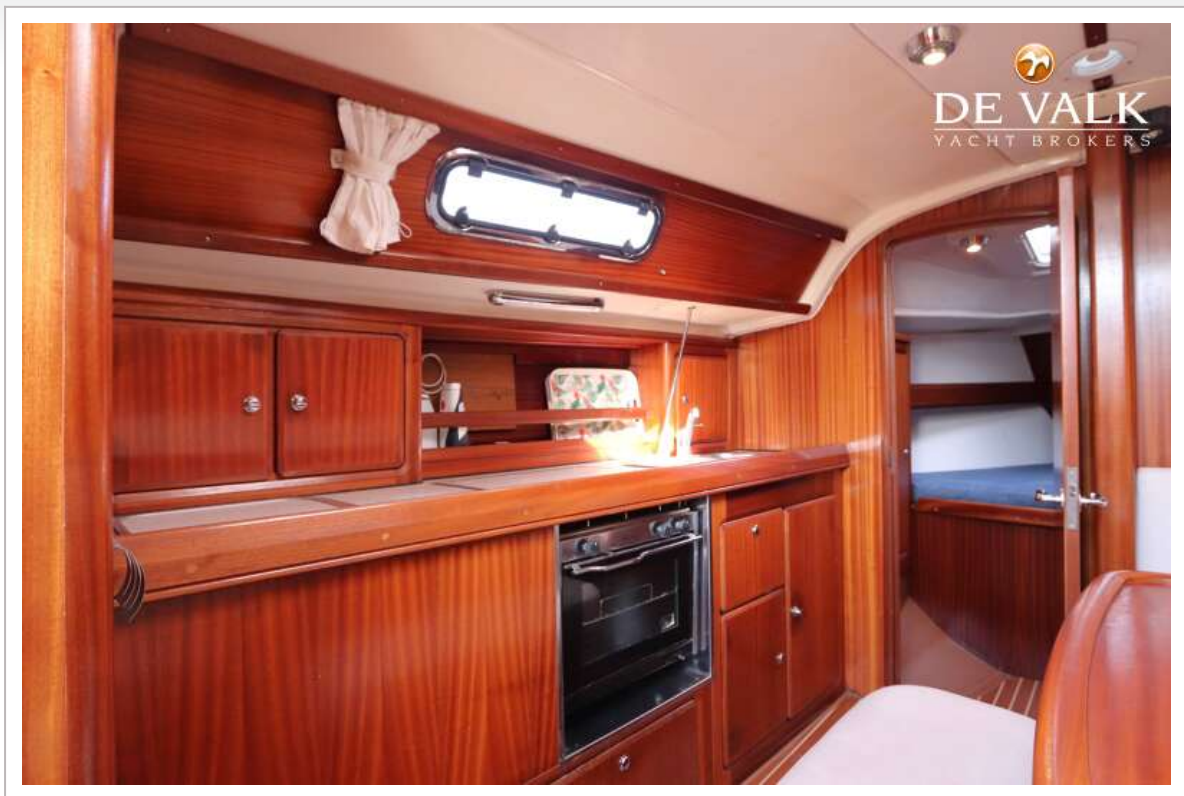


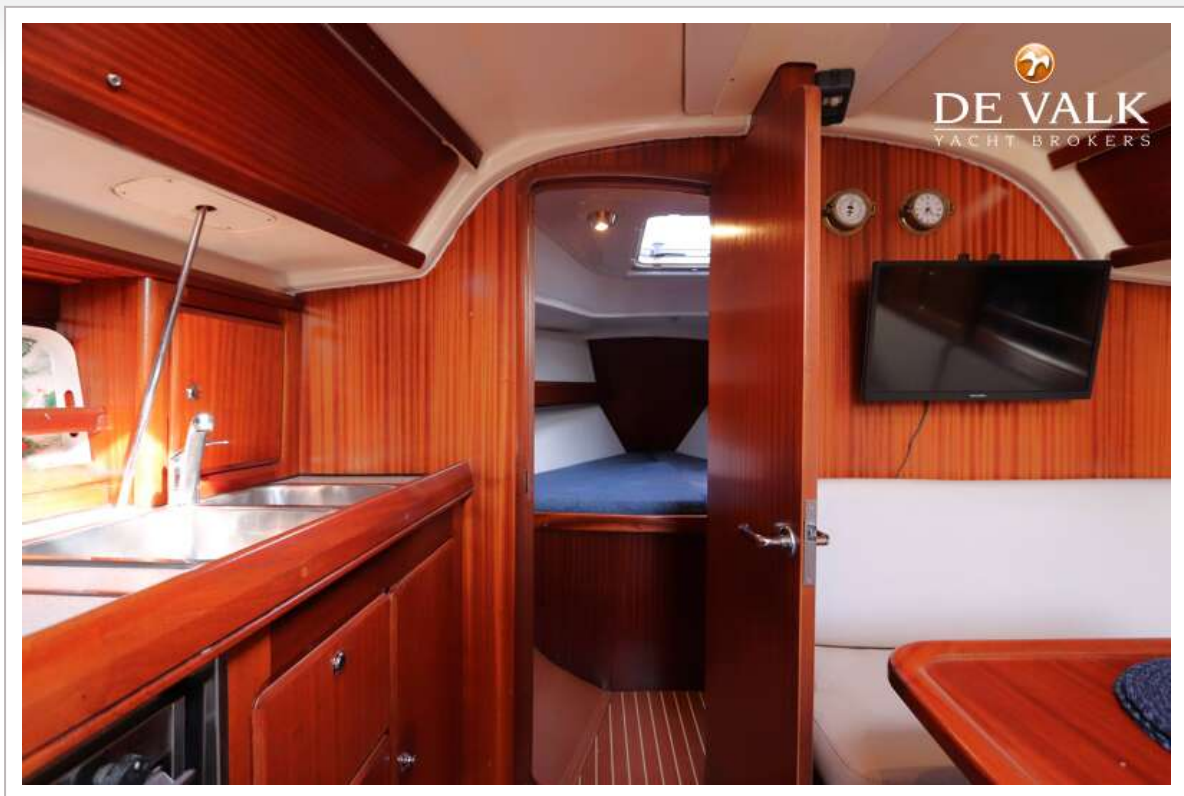
## BAVARIA 37-3





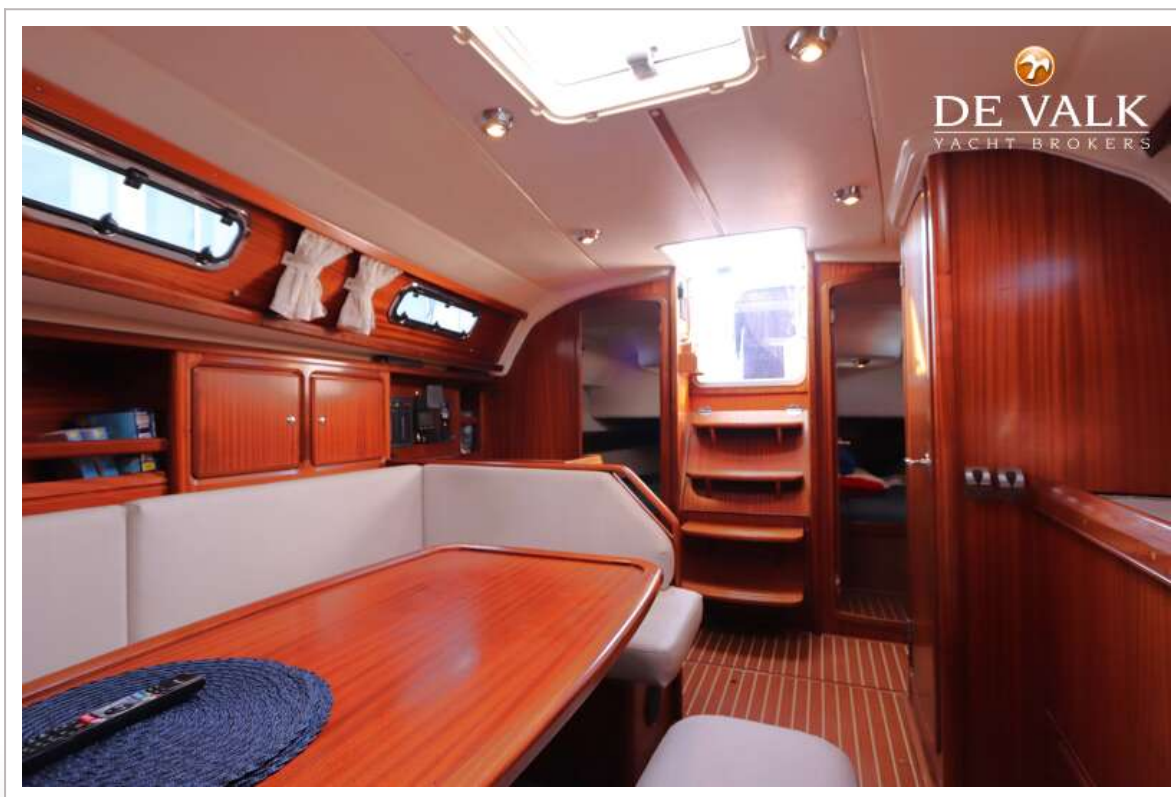
## BAVARIA 37-3

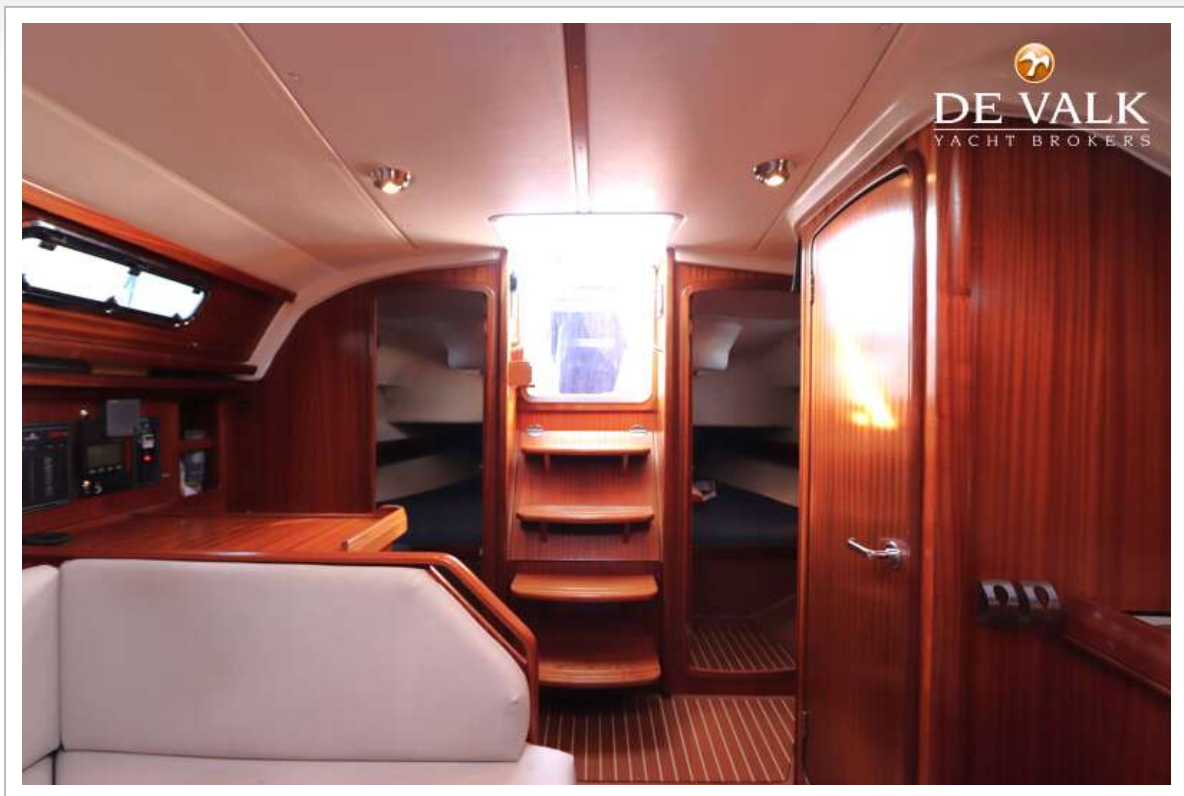






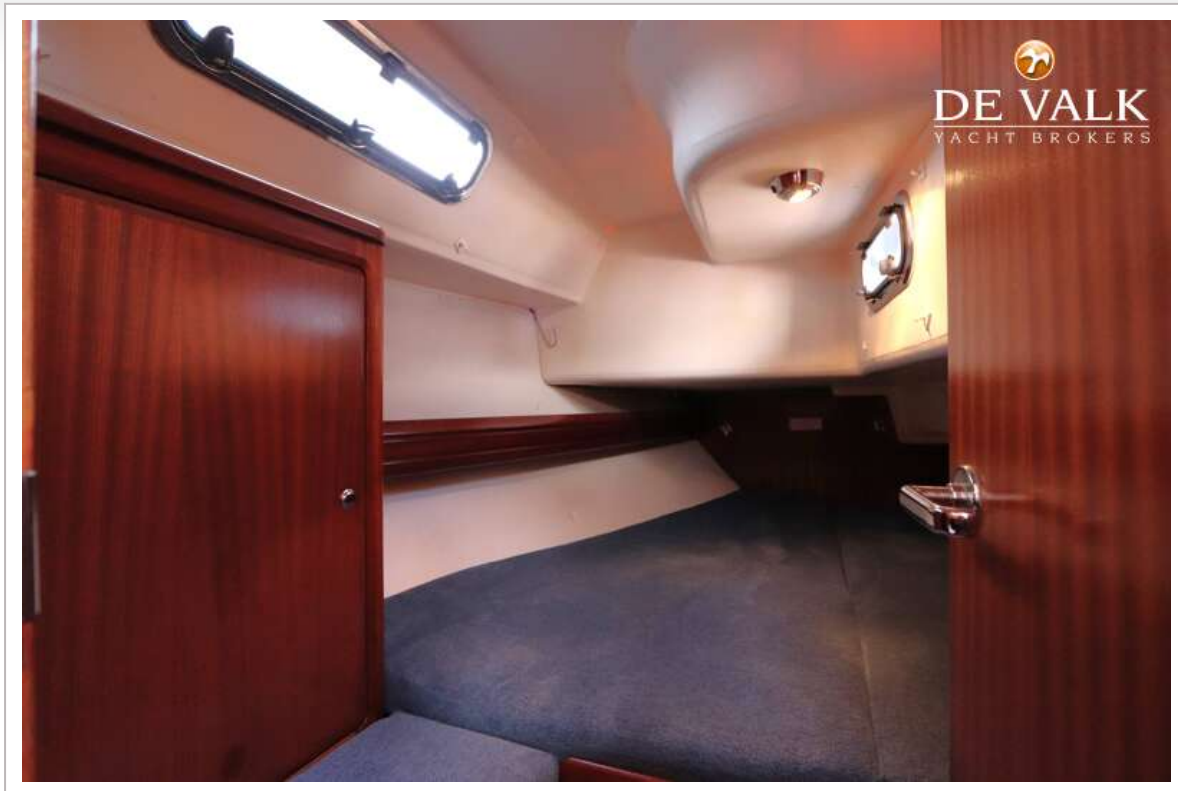
## BAVARIA 37-3



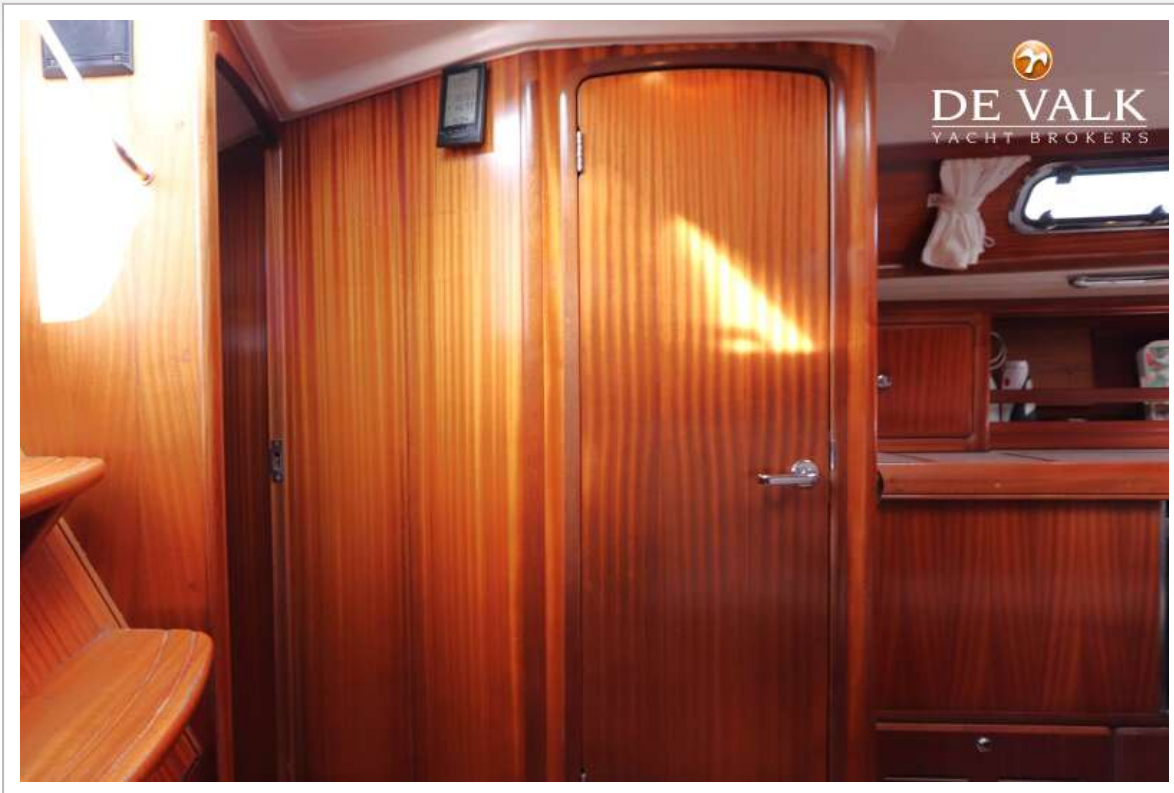




## BAVARIA 37-3



## BAVARIA 37-3





## BAVARIA 37-3



# BAVARIA 37-3

