



DE VALK  
YACHT BROKERS



## KOOPMANS 39 FRISIAN



DE VALK  
YACHT BROKERS

## BROKER'S COMMENTS

This Koopmans 39 is cutter rigged, safe, comfortable and designed for long sea voyages. The beautiful line is immediately noticeable as soon as you see the ship. The classic white sails and all covers were renewed in 2018, but really brand new. The interior is neatly finished. Equipped with a boiler, Webasto heating, bow thruster, autopilot, etc. The Koopmans 39 can be visited on shore next to our office in Sint Annaland.

*Jan-Ward van Dantzig*

## SPECIFICATIONS

<b>Dimensions</b>	11.90 x 3.60 x 1.90 (m)	<b>Builder</b>	Van Waveren - Noord Holland
<b>Built</b>	1997	<b>Cabins</b>	2
<b>Material</b>	Steel	<b>Berths</b>	5
<b>Engine(s)</b>	1 x Yanmar 4JH2E diesel	<b>Hp/Kw</b>	50.00 (hp), 36.80 (kw)
<b>Asking price</b>	sold (VAT )	<b>Lying</b>	at sales office

## CONTACT

<b>Sales office</b>	De Valk Sint Annaland B.V.	<b>Telephone</b>	+31 (0)166 601 000
<b>Address</b>	Koelhuisweg 4 4697 RM Sint Annaland NL	<b>E-mail</b>	sintannaland@devalk.nl

## DISCLAIMER

These particulars are given in good faith as supplied but cannot be guaranteed.



## GENERAL

Model	KOOPMANS 39 FRISIAN
Type	sailing yacht
LOA (m)	11,90
LWL (m)	8,60
Beam (m)	3,60
Draft (m)	1,90
Air draft (m)	17,50
Headroom (m)	1,95
Year built	1997
Launched	1997
Builder	Van Waveren - Noord Holland
Country	The Netherlands
Designer	Dick Koopmans Sr
Displacement (t)	12
CE norm	NA
Hull material	steel
Hull colour	green
Hull shape	round-bilged
Keel type	fin keel
Superstructure material	wood epoxy
Rubbing strake	steel
Deck material	steel
Deck finish	non-skid paint
Superstructure deck finish	paint
Cockpit deck finish	teak
Antifouling (year)	2020
Dorades	2 x Stainless steel with a stainless steel protection bar
Window frame	aluminium Hora
Window material	tempered glass
Deckhatch	Gebo



<b>Portholes</b>	aluminium
<b>Insulation</b>	foam
<b>Fuel tank (litre)</b>	steel 500 (empty and not connect, but easy done by connecting hose)
<b>Fuel daytank (litre)</b>	steel 40
<b>Freshwater tank (litre)</b>	steel 2 x 200 & 1 x 400
<b>Blackwater tank (litre)</b>	aluminium
<b>Blackwater tank extraction</b>	deck extraction + uw line
<b>Wheel steering</b>	cable steering Whitlock Cobra DeLuxe with a stainless steel steering wheel
<b>Emergency tiller</b>	yes
<b>Extra info</b>	Design Nr. 299 - 651
<b>Extra info</b>	Construction of the hull started in 1994
<b>Extra info</b>	Wooden cockpit locker hatches need maintenance

## ACCOMMODATION

<b>Cabins</b>	2
<b>Berths</b>	5
<b>Interior</b>	mahogany
<b>Floor</b>	teak New in 2010
<b>Saloon</b>	yes
<b>Headroom saloon (m)</b>	1.87 - 2.15
<b>Heating</b>	diesel ducted hot air Webasto (serviced in 2022)
<b>Chart table</b>	On starboard side - Headroom : 1.93 m
<b>Aft Cabin</b>	1 x
<b>Dinette</b>	yes
<b>Convertible berth</b>	Both sofa seats can be used as a berth (1.95x0.55 & 2.05x0.65m)
<b>Galley</b>	On Port side - Headroom : 1.93 m
<b>Countertop</b>	Duropol Blue
<b>Sink</b>	stainless steel 2 x
<b>Cooker</b>	calor gas Techimpex 3 burner



Oven	Techimpex
Fridge	Top loader fridge with an Isostar compressor
Hot water system	220V + engine Isothemp boiler
Water pressure system	electrical
Owners cabin	v-bed In the front cabin - Headroom : 1.90 - 1.98 m
Bed length (m)	2.05 x 1.50
Wardrobe	hanging and shelves
Bathroom	shared Headroom : 1.92 m
Toilet	shared
Toilet system	manual Jabsco
Wash basin	in the bathroom
Guest cabin 1	double bed In aft cabin - Headroom : 1.92 m
Bed length (m)	1.97 x 1.50
Wardrobe	hanging and shelves

## MACHINERY

No of engines	1
Make	Yanmar
Type	4JH2E
HP	50
kW	36.80
Fuel	diesel
Year installed	1996
Maximum speed (kn)	7
Cruising speed (kn)	5
Consumption (l/hr)	3
Engine hours	1966
Engine cooling system	freshwater heat exchanger
Drive	shaft
Shaft seal	Hollex Seal
Engine controls	bowden cable



<b>Gearbox</b>	mechanical Kanzaki KM4A
<b>Bowthruster</b>	electric Sleipner (New control panel in cockpit installed in 2024)
<b>Exhaust</b>	watercooled
<b>Thrust bearing</b>	Aquadrive
<b>Propeller type</b>	fixed
<b>Propeller blades</b>	2
<b>Propeller shaft material</b>	stainless steel
<b>Shaft lubrication</b>	water
<b>Manual bilge pump</b>	yes
<b>Electric bilge pump</b>	yes
<b>Electrical installation</b>	12 & 220 Volt
<b>Start battery</b>	1 x 105 AH
<b>Service battery</b>	New in April 2024 : 1 x 240 Ah
<b>Bowthruster battery</b>	1 x Exide
<b>Battery monitor</b>	yes
<b>Battery charger</b>	New in 2009 : Victron Pallas 50 A
<b>Inverter</b>	Victron Atlas 750 W
<b>Diode battery combiners</b>	yes
<b>Shorepower</b>	with cable
<b>Insulation transformer</b>	New in 2009 : Victron Isolation Transformer 3600 Watt
<b>Extra info</b>	2 x Delphi fuel filter with water separator
<b>Extra info</b>	The engine was taken into use in 1997

## NAVIGATION

<b>Compass</b>	Whitlock Polaris 115
<b>Multi control display</b>	Autohelm ST50 Multi at the chart table
<b>Depth sounder</b>	Autohelm ST50
<b>Log</b>	Autohelm ST50
<b>Windset</b>	Autohelm ST50
<b>VHF</b>	Shipmate RS8300 & 2nd horn at entrance
<b>Autopilot</b>	Raymarine ST6000 with wired remote control



Rudder angle indicator	yes
GPS	1x Garmin GPS 128 & 1x Garmin GPS 126
Radar/GPS/plotter	Raymarine C80
Navigation lights	yes

## EQUIPMENT

Boarding ladder	stainless steel
Anchor	CQR Plough 35 LBS
Anchor chain	40 meter with a stainless steel swiffel
Windlass	electrical Lewmar
Sea railing	stainless steel With a stainless steel wire underneath
Grab rail (superstructure)	teak
Railing side opening gates	On both sides
Pushpit	Stainless steel
Pulpit	Stainless steel
Lifebuoy	Yellow Talamex Ibylon Maxi John 160 Kg
Danbuoy	Plastimo - As New
Radar reflector	Tri-Lens
Fenders	yes
Mooring lines	yes
Spare parts	yes
Radio-cd player	Pioneer radio/ cd-player
Speakers in salon	2 x Pioneer
Fire extinguisher	2 x
Latest extinguisher survey	Need to be renewed/checked
Extra info	New in 2018 : Plastimo Rescue Sling - Brand New
Extra info	3 x Boathook

## RIGGING

Rigging	cutter
Standing rigging	wire (1997)



<b>Brand mast</b>	Proctor
<b>Material mast</b>	aluminium coated (White)
<b>Spreaders</b>	2 x set of spreaders. Diamond stays mounted in 2010
<b>Mainsail</b>	New in 2018 : Van Vliet Sails - classic white - STILL BRAND NEW
<b>Mainsail cover</b>	New in 2018 - STILL BRAND NEW
<b>Jib</b>	New in 2018 : Van Vliet Sails - Furling Cutter Jib - classic white - STILL AS NEW
<b>Genoa</b>	New in 2018 : Van Vliet Sails - classic white - STILL AS NEW
<b>Genoa furler</b>	Harken
<b>Genoa cover</b>	New in 2018 : Sand coloured cover - STILL BRAND NEW
<b>Cutter furler</b>	Harken Cruiser 1
<b>Reefing System</b>	slabreefing
<b>Boomvang</b>	gasspring Selden Rodkicker
<b>Secondary sheet winch</b>	2 x Harken 44.2 ST
<b>Genoa sheetwinches</b>	2 x Harken 48.2 ST
<b>Halyard winches</b>	2 x Harken 40.2 ST
<b>Reefing winch</b>	1x Harken 20.1 ST & 1x Harken 16.1 ST & 1x Harken 32.2 ST
<b>Spi-pole</b>	aluminium 1 x Harken (Black coated)
<b>Extra info</b>	New in 2010 : Removable Dyneema Jack-Stays
<b>Extra info</b>	Due to the mounted Diamond Stays, the Jack-Stays are only needed in heavy weather or sailing in big waves





# KOOPMANS 39 FRISIAN









# KOOPMANS 39 FRISIAN

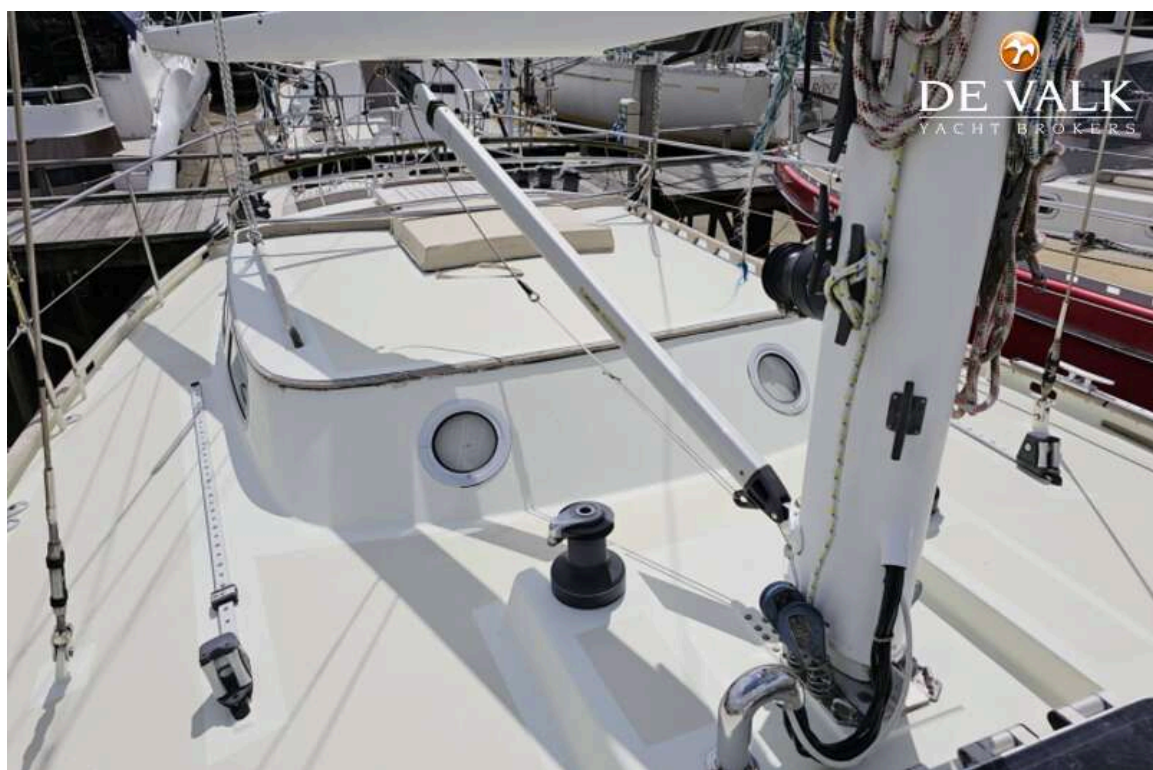


# KOOPMANS 39 FRISIAN





# KOOPMANS 39 FRISIAN



# KOOPMANS 39 FRISIAN





# KOOPMANS 39 FRISIAN





# KOOPMANS 39 FRISIAN

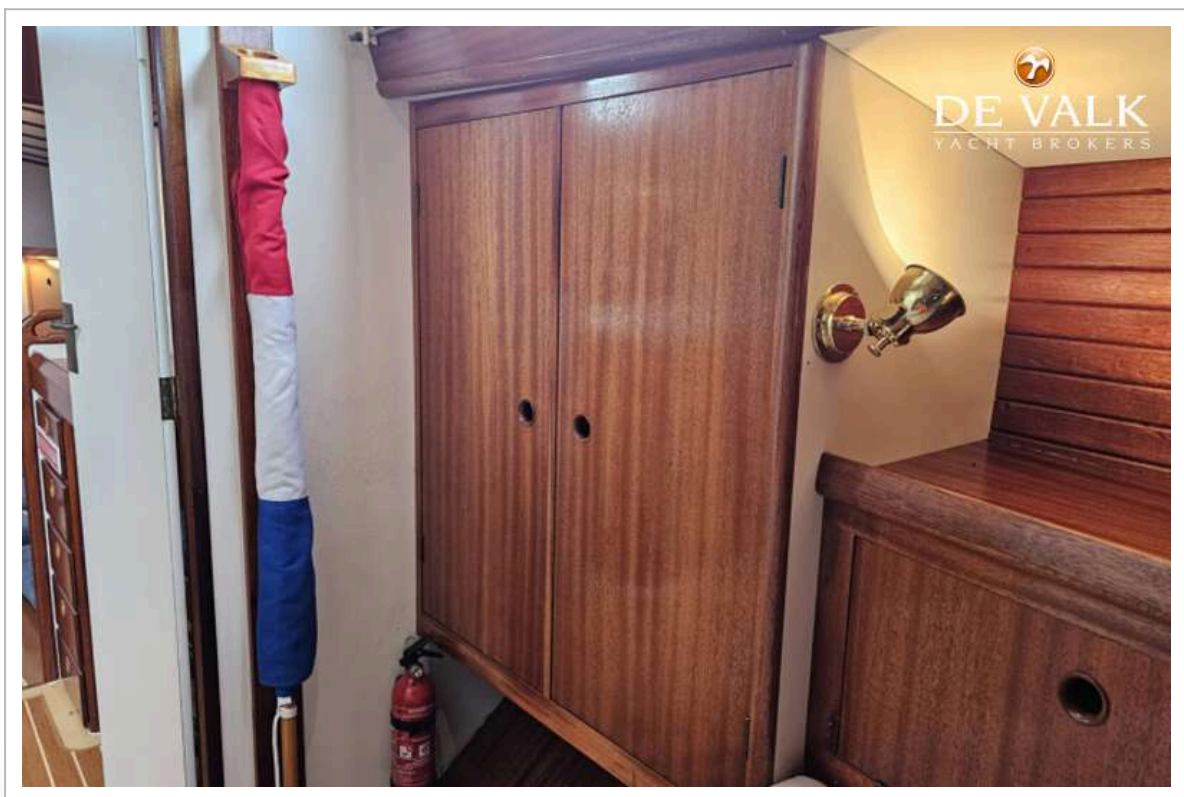




# KOOPMANS 39 FRISIAN



# KOOPMANS 39 FRISIAN

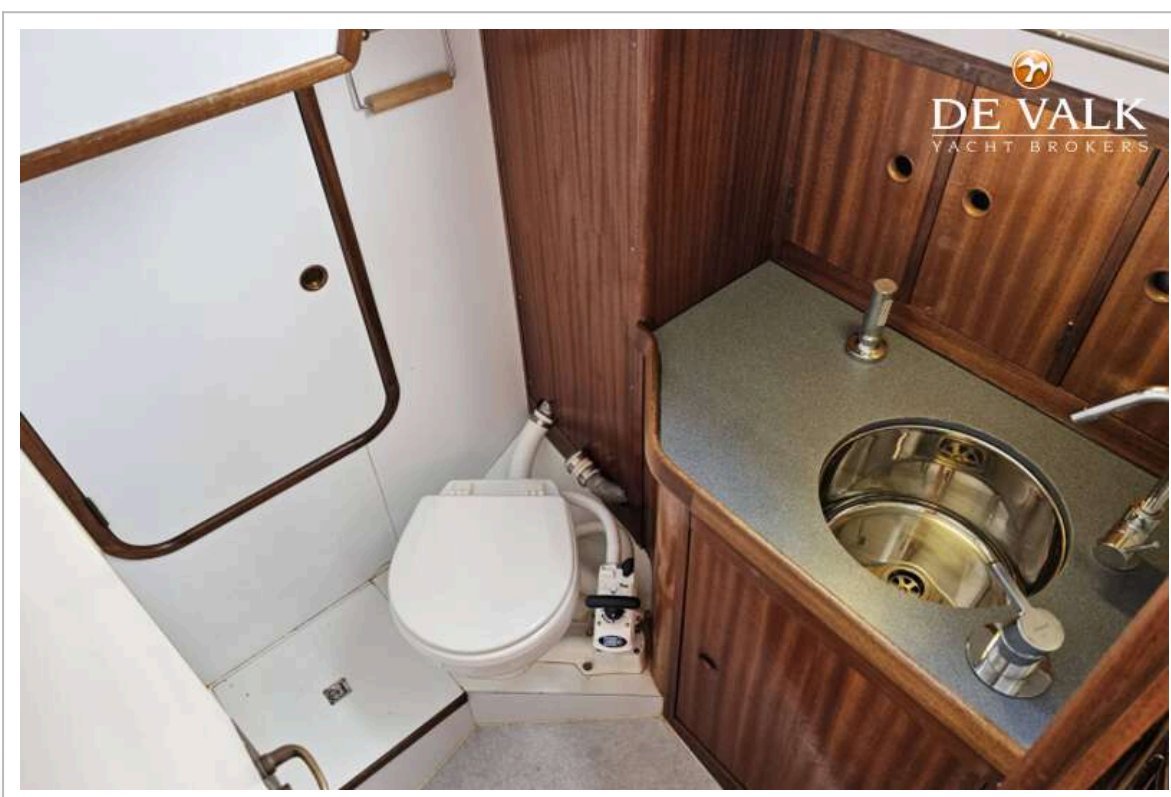




# KOOPMANS 39 FRISIAN

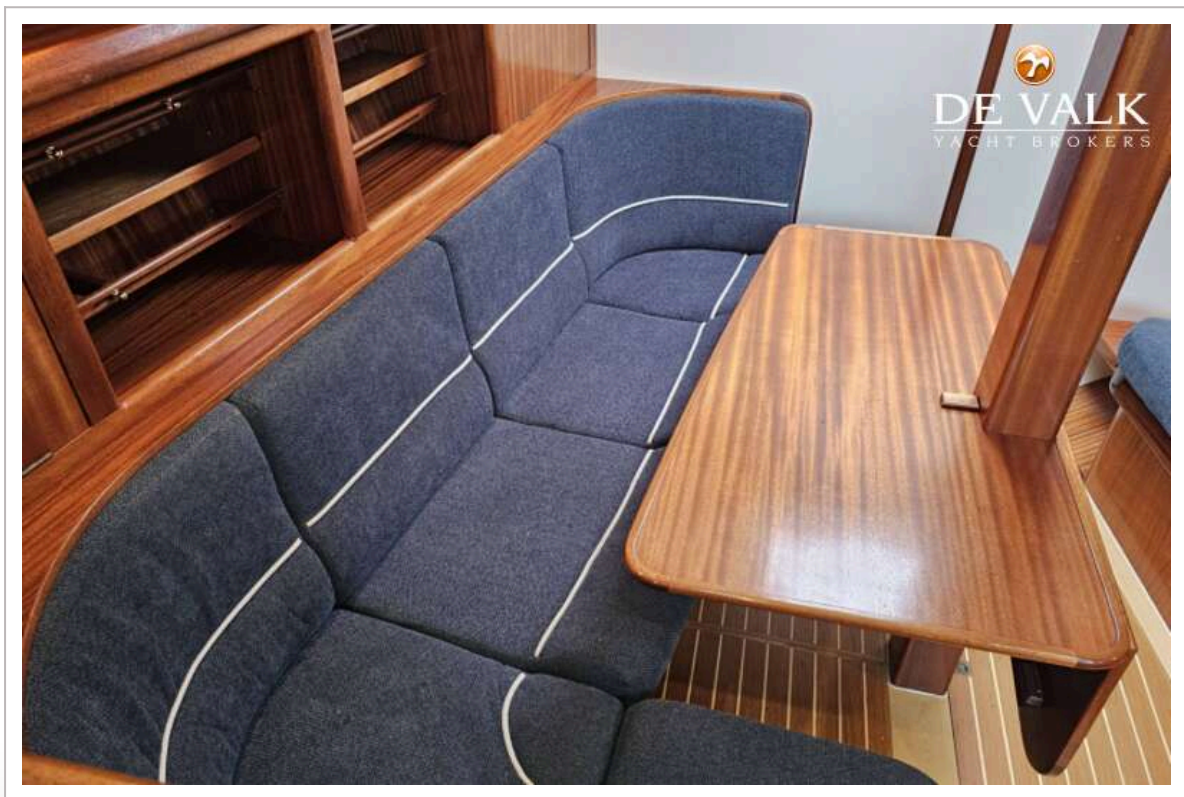


# KOOPMANS 39 FRISIAN





# KOOPMANS 39 FRISIAN





# KOOPMANS 39 FRISIAN





# KOOPMANS 39 FRISIAN





# KOOPMANS 39 FRISIAN



# KOOPMANS 39 FRISIAN

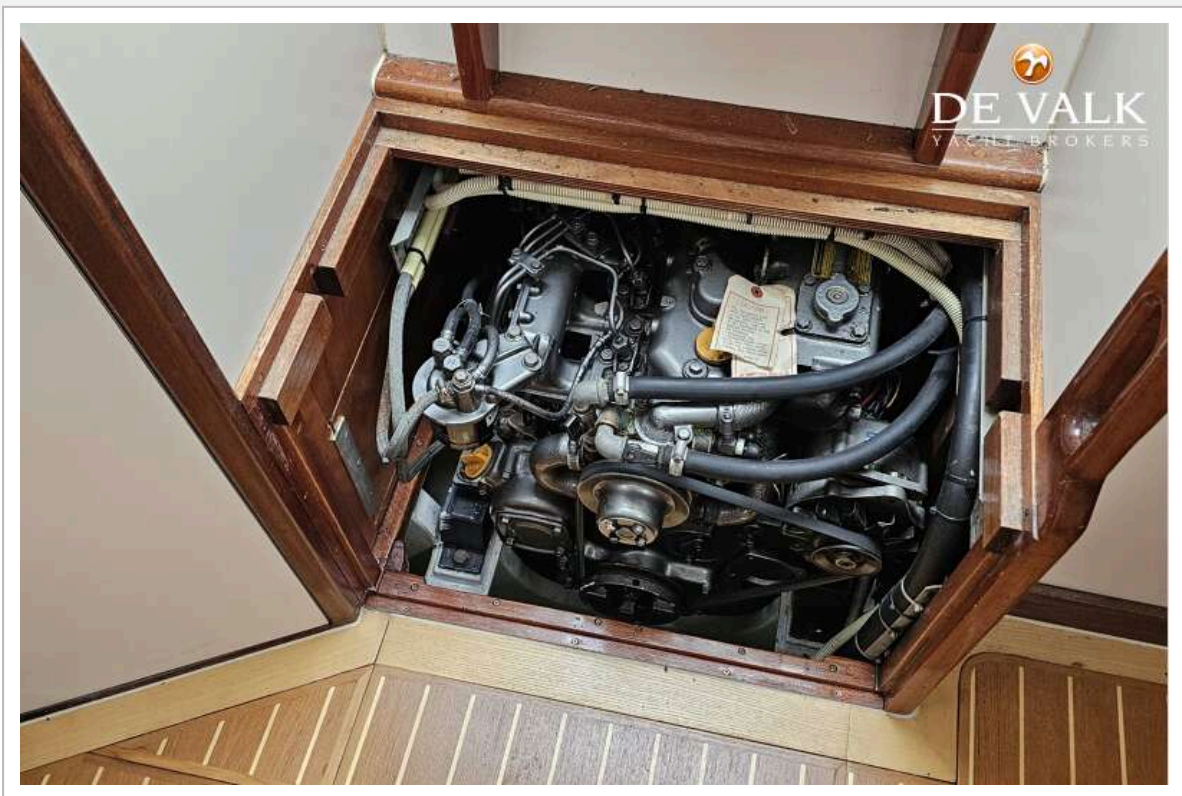




# KOOPMANS 39 FRISIAN



# KOOPMANS 39 FRISIAN





# KOOPMANS 39 FRISIAN

