



THIS YACHT WILL BE AUCTIONED

NOORSE ZEILKOTTER

BROKER'S COMMENTS

The Noorse Zeilkotter "Liarholm" is a registered historic sailing vessel that was restored at the Botterwerf in Bunschoten netherlands. The Noorse Zeilkotter "Liarholm" is a strong and sturdy seagoing ship capable of crossing the world in all conditions. She offers 7 berth in 3 individual areas more then enough to host a family with kids on a holiday or serve a group of friends as a sturdy expedition vessel.

Mark Hesselmans

SPECIFICATIONS

Dimensions	18.00 x 5.05 x 2.10 (m)	Builder	Flekkefjord
Built	1945	Cabins	1
Material	Wood	Berths	7
Engine(s)	1 x Daf 575 diesel	Hp/Kw	105.00 (hp), 77.28 (kw)
Asking price	€ 129.000 (VAT Exempt)	Lying	elsewhere / Not at sales office

CONTACT

Sales office	De Valk Loosdrecht B.V.	Telephone	+31 (0)35 582 90 30
Address	't Breukeleveense Meentje 6 1231LM Loosdrecht / Wijdmeren NL	E-mail	loosdrecht@devalk.nl

DISCLAIMER

These particulars are given in good faith as supplied but cannot be guaranteed.



GENERAL

Model	NOORSE ZEILKOTTER
Type	sailing yacht
LOA (m)	18,00
LWL (m)	15,00
Beam (m)	5,05
Draft (m)	2,10
Air draft (m)	15,00
Year built	1945
Builder	Flekkefjord
Country	Norway
Displacement (t)	50
Hull material	wood
Hull colour	white
Hull shape	S-bilged
Keel type	long keel
Superstructure material	wood
Rubbing strake	wood
Deck material	wood
Deck finish	teak On plywood
Superstructure deck finish	teak On plywood
Antifouling (year)	07-2025
Dorades	2
Window frame	copper
Window material	glass
Deckhatch	3 x
Portholes	copper
Radar arch	yes
Fuel tank (litre)	stainless steel 600
Fuel tank 2 (litre)	stainless steel 600
Freshwater tank (litre)	stainless steel 1000



Blackwater tank (litre)	stainless steel 500
Blackwater tank extraction	deck extraction + pump
Wheel steering	hydraulic
Inside helm position	yes
More info on hull	Pine and larch hull carvel on oak rafters

ACCOMMODATION

Cabins	1
Berths	7
Interior	birch
Layout	Private
Floor	parquet
Aft deck	yes
Pilot house	yes
Headroom saloon (m)	1,90
Heating	central heating Kabola
Navigation center	yes
Chart table	yes
Dinette	yes
Opening door to cockpit	yes
Galley	L shaped
Countertop	granite
Sink	stainless steel
Cooker	induction Bosch
Oven	Bosch
Extractor	yes
Microwave/oven combi	Bosch
Fridge	yes
Freezer	Inside fridge
Hot water system	on central heating
Water pressure system	electrical



Owners cabin	double bed
Bed length (m)	2,00
Wardrobe	drawers and shelves
Bathroom	separate
Toilet	separate
Toilet system	electric
Wash basin	in the bathroom
Shower	separate
Guest cabin 1	single bed 1 bed opposite bathroom
Guest cabin 2	4x single beds in saloon

MACHINERY

No of engines	1
Make	Daf
Type	575
HP	105
kW	77.28
Fuel	diesel
Year installed	2009
Year of overhaul	2009
Maximum speed (kn)	9
Cruising speed (kn)	6
Engine cooling system	seawater
Drive	shaft
Shaft seal	yes
Engine controls	bowden cable
Gearbox	hydraulic
Exhaust	watercooled
Propeller type	fixed
Propeller blades	3
Propeller shaft material	steel



Shaft lubrication	grease
Manual bilge pump	yes
Electric bilge pump	3x
Electrical installation	12 V / 220 V
Generator	dry exhaust Fisher Panda 4kW
Running hours generator	165
Batteries	4x
Start battery	2x 180A
Generator battery	1x defect
Battery charger/inverter	Victron Quattro 24/5000/120
Shorepower	with cable

NAVIGATION

Compass	Plastimo
VHF	Skanti
Autopilot	Raymarine 2022
Radar/GPS/plotter	Raymarine C90
AIS transceiver	Serviced 5 years ago Em-Trak A100
Navigation lights	yes
Loudhailer	Aletco

EQUIPMENT

Anchor	Bruce
Anchor chain	yes
Anchor 2	Bruce
Anchor chain	yes
Windlass	manual
Sea railing	teak
Pushpit	yes
Pulpit	yes
Horn	air pressure



Fenders	yes
Mooring lines	yes
Spare parts	yes
Tools	yes
TV	2 x

RIGGING

Rigging	cutter
Standing rigging	wire
Material mast	wood New winter 2020/2021
Mainsail	yes
Mizzen	yes
Jib	yes
Jib I	Selftacking
Gennaker	yes
Halyard winches	2 x
Reefing winch	2 x





**This yacht will be auctioned,
for further details please visit www.devalk.nl**

**Dit schip zal worden geveild,
voor meer informatie gaat u naar www.devalk.nl**

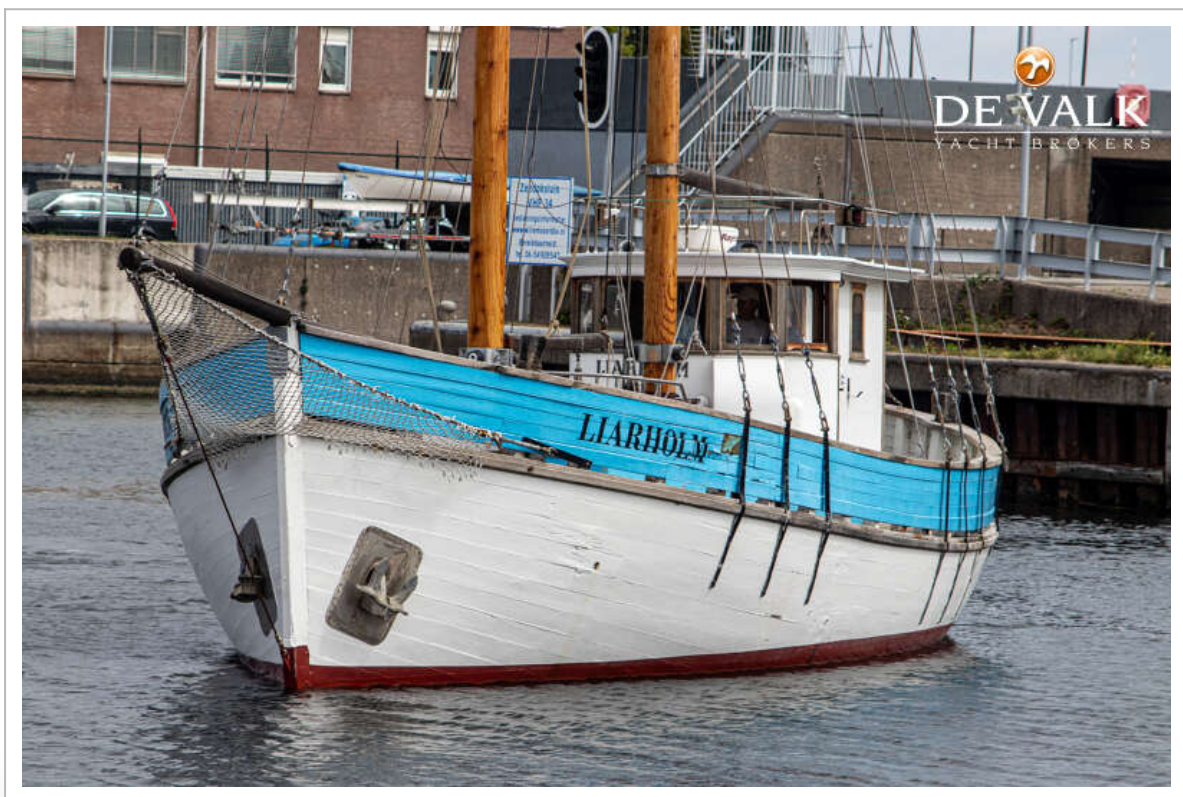
**Dieses Schiff wird versteigert,
für weitere informationen besuchen Sie www.devalk.nl**

WWW.DEVALK.NL

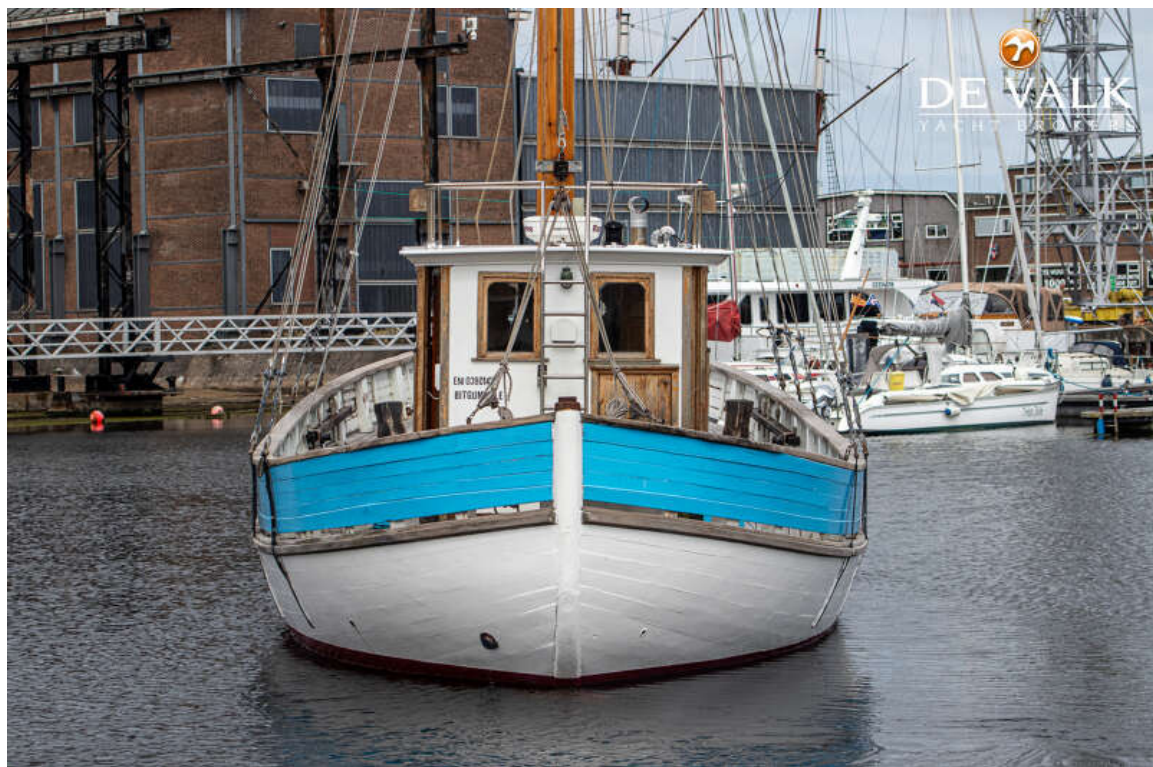
DE VALK
YACHT BROKERS



NOORSE ZEILKOTTER



NOORSE ZEILKOTTER

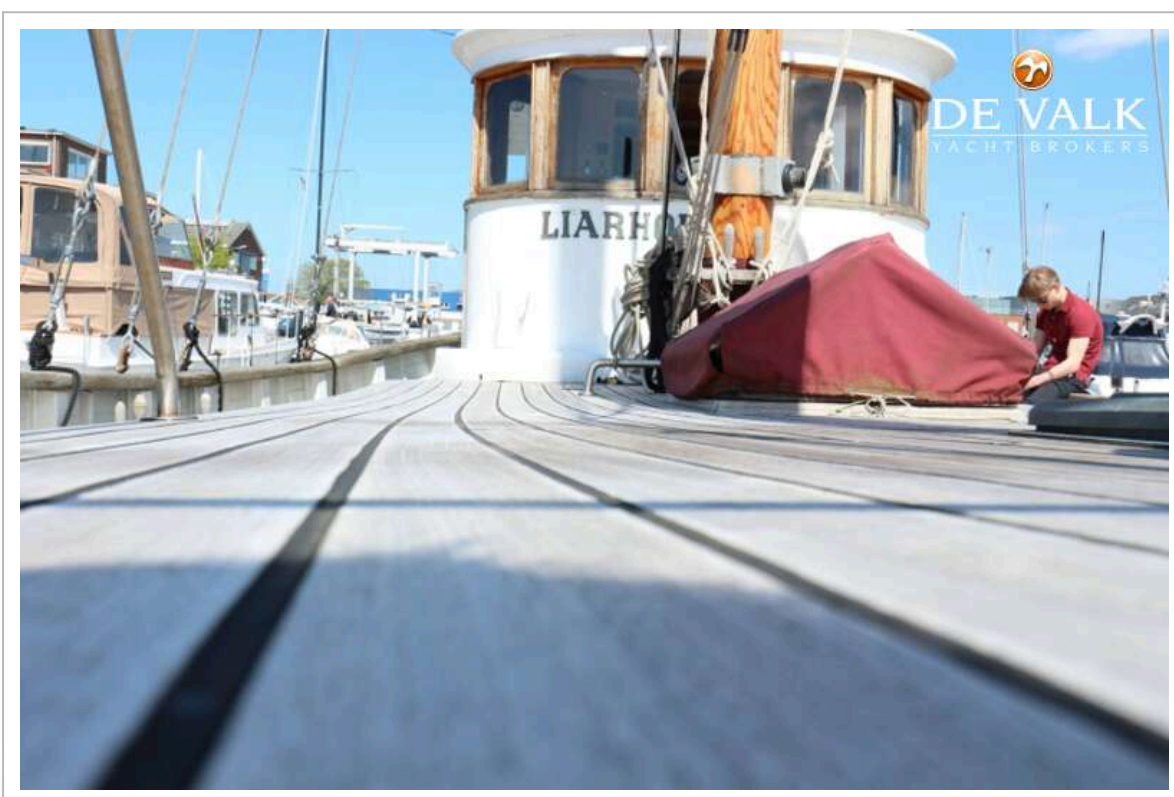


NOORSE ZEILKOTTER



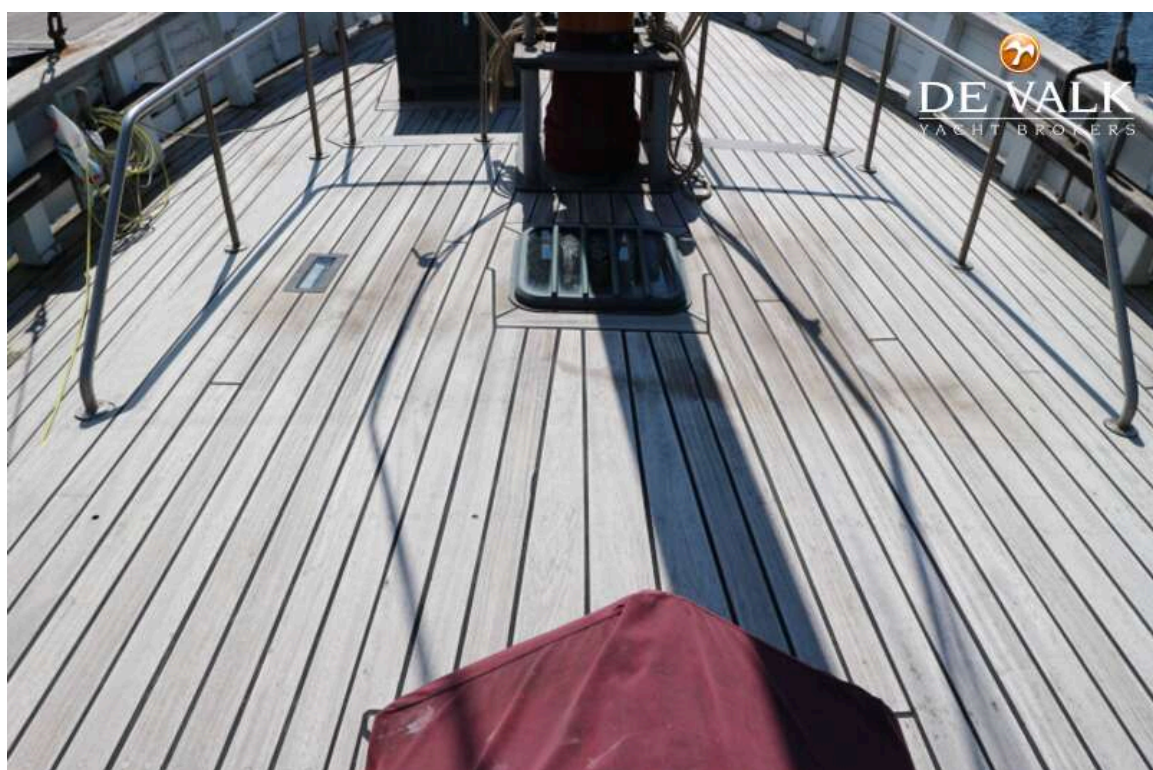


NOORSE ZEILKOTTER

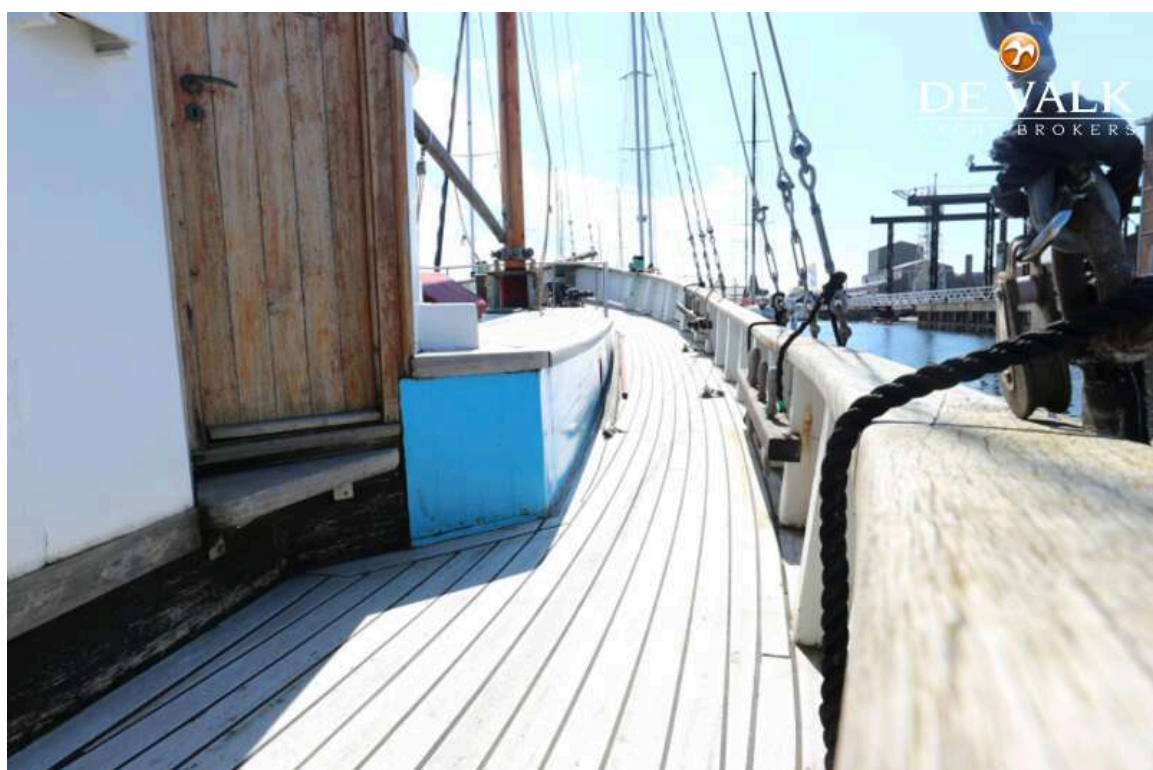




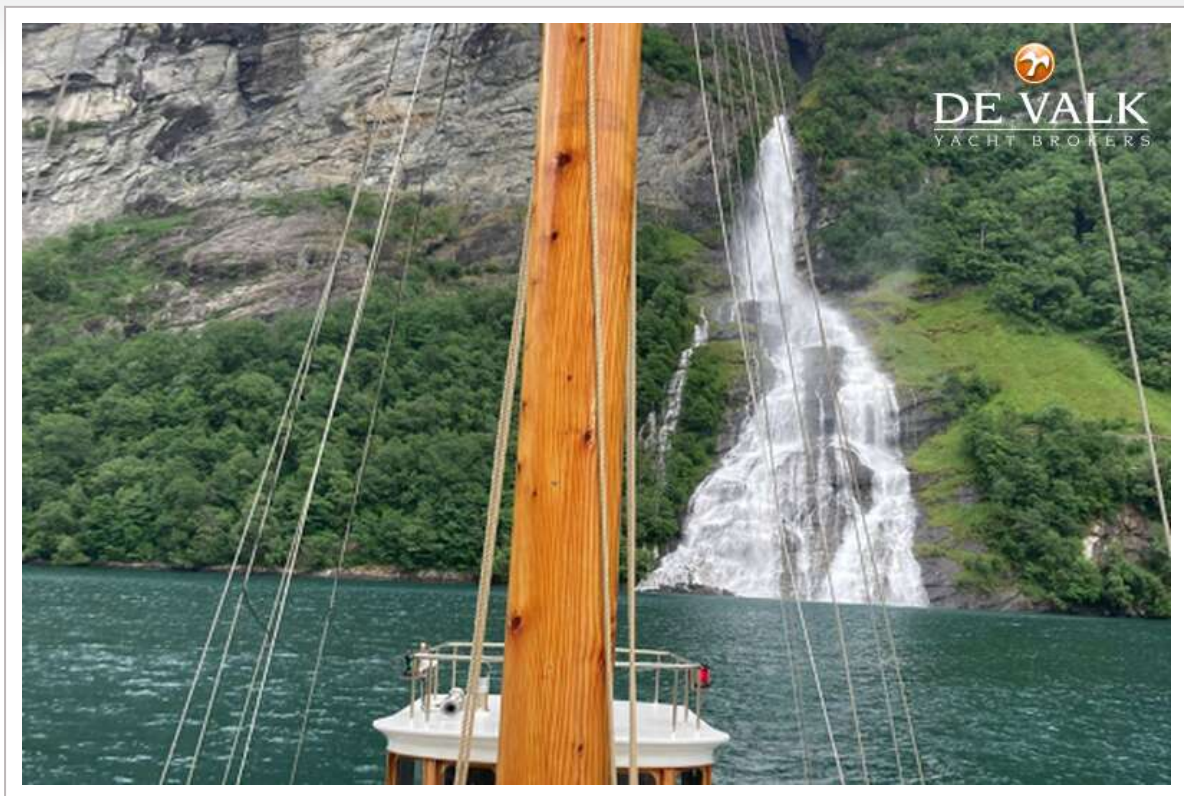
NOORSE ZEILKOTTER



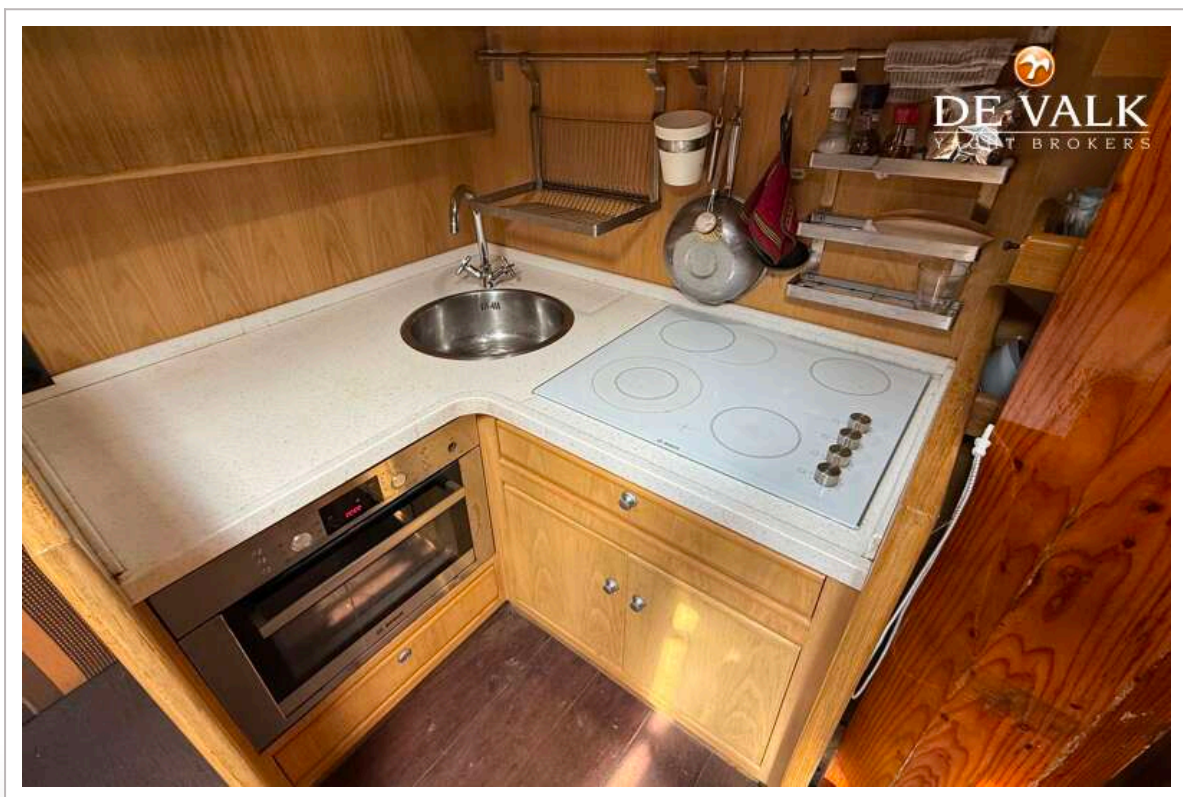
NOORSE ZEILKOTTER



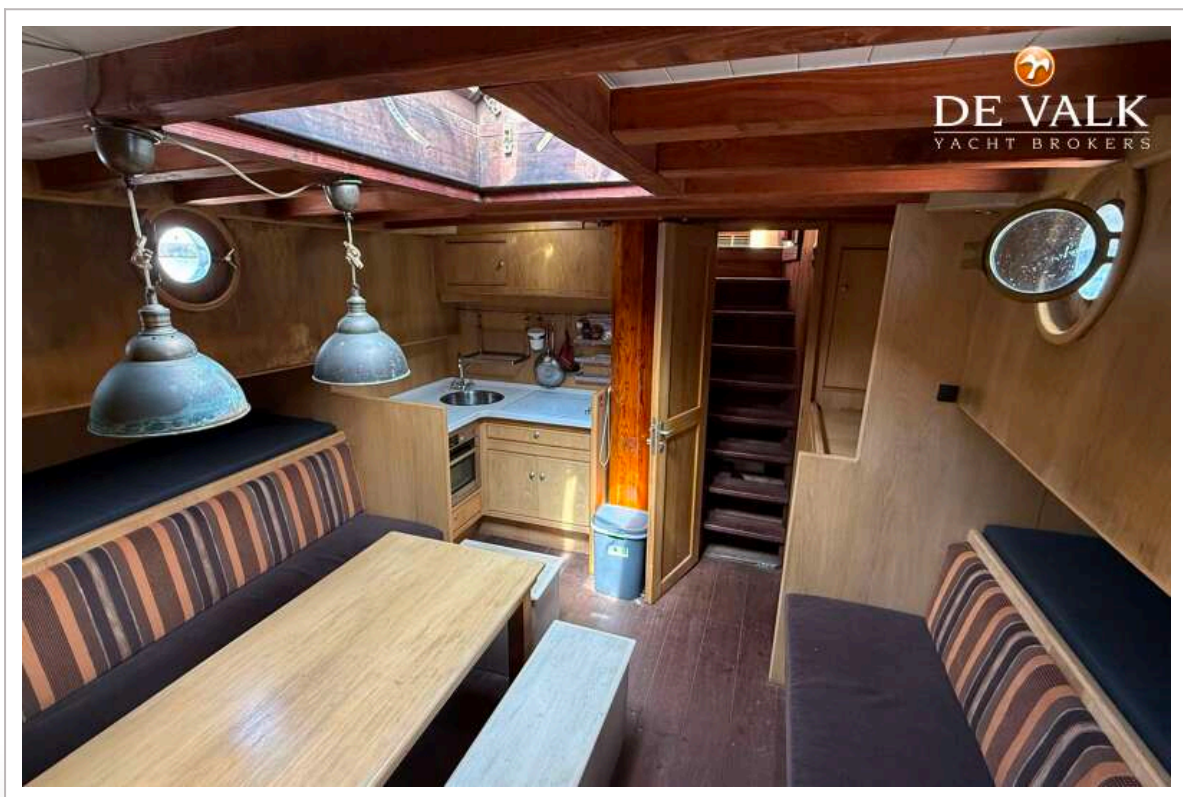
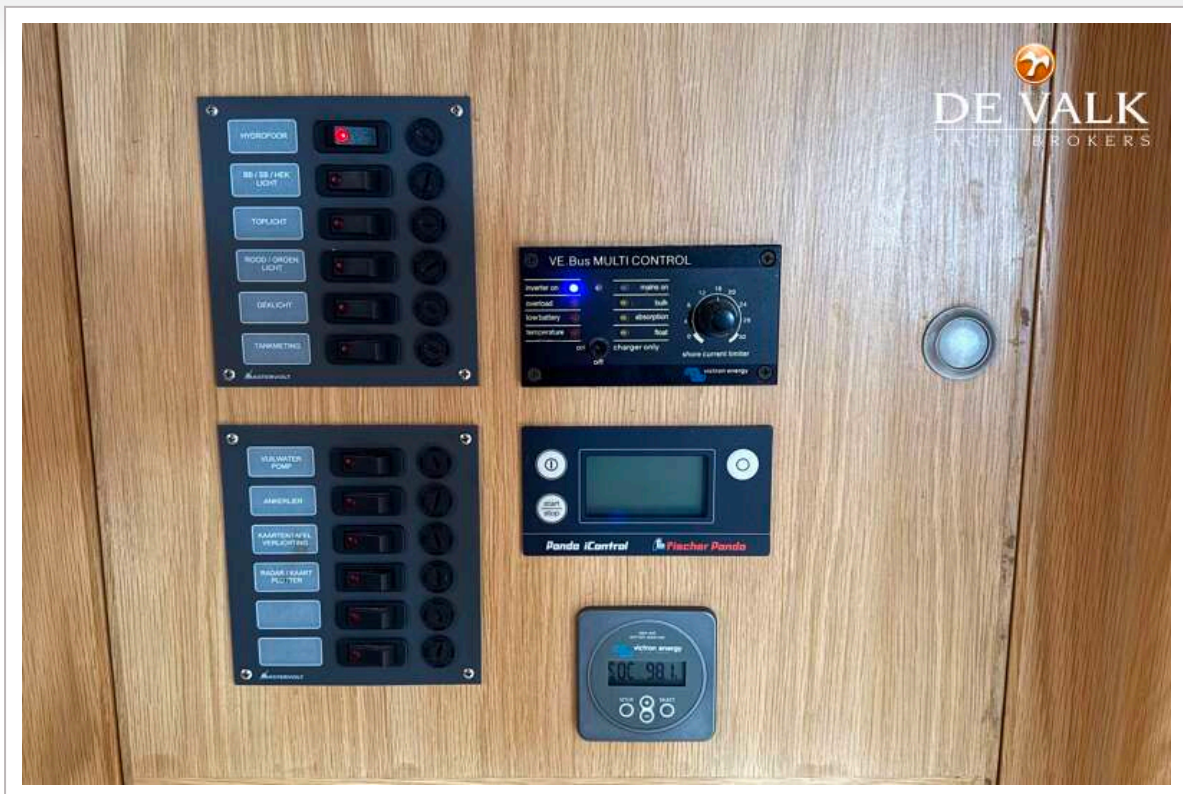
NOORSE ZEILKOTTER



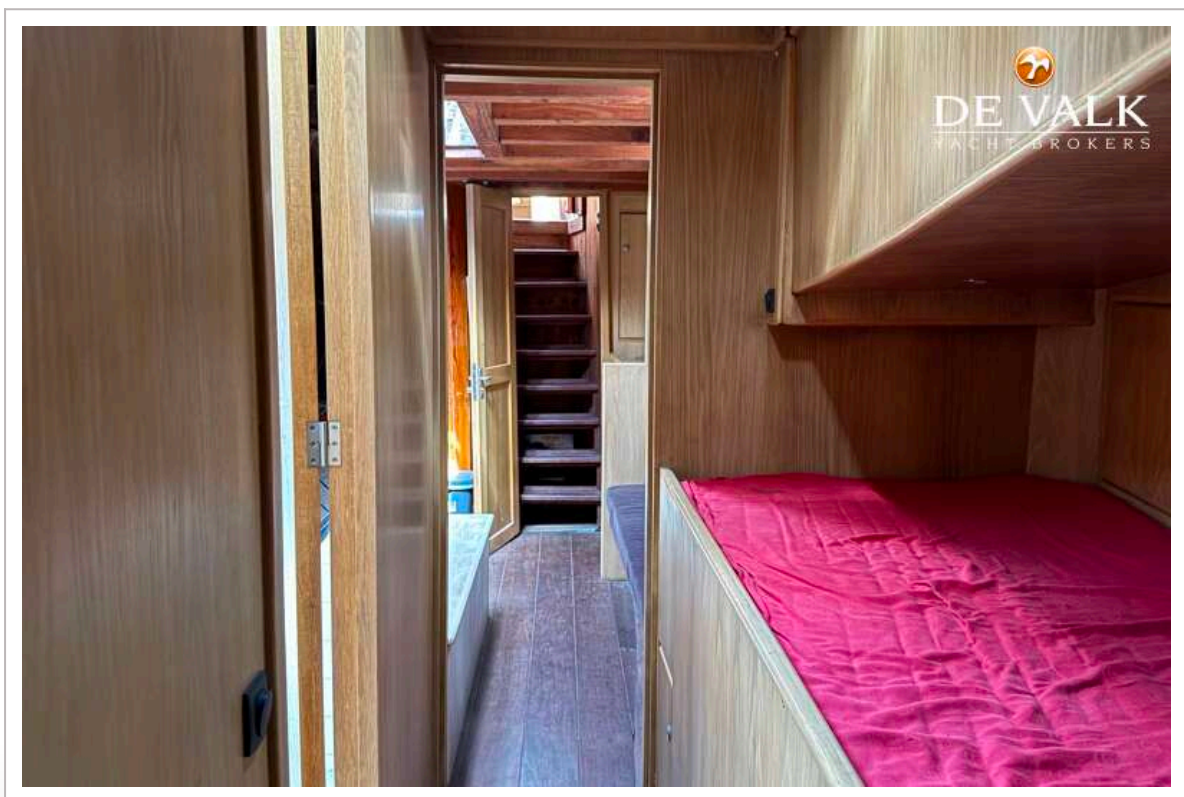
NOORSE ZEILKOTTER



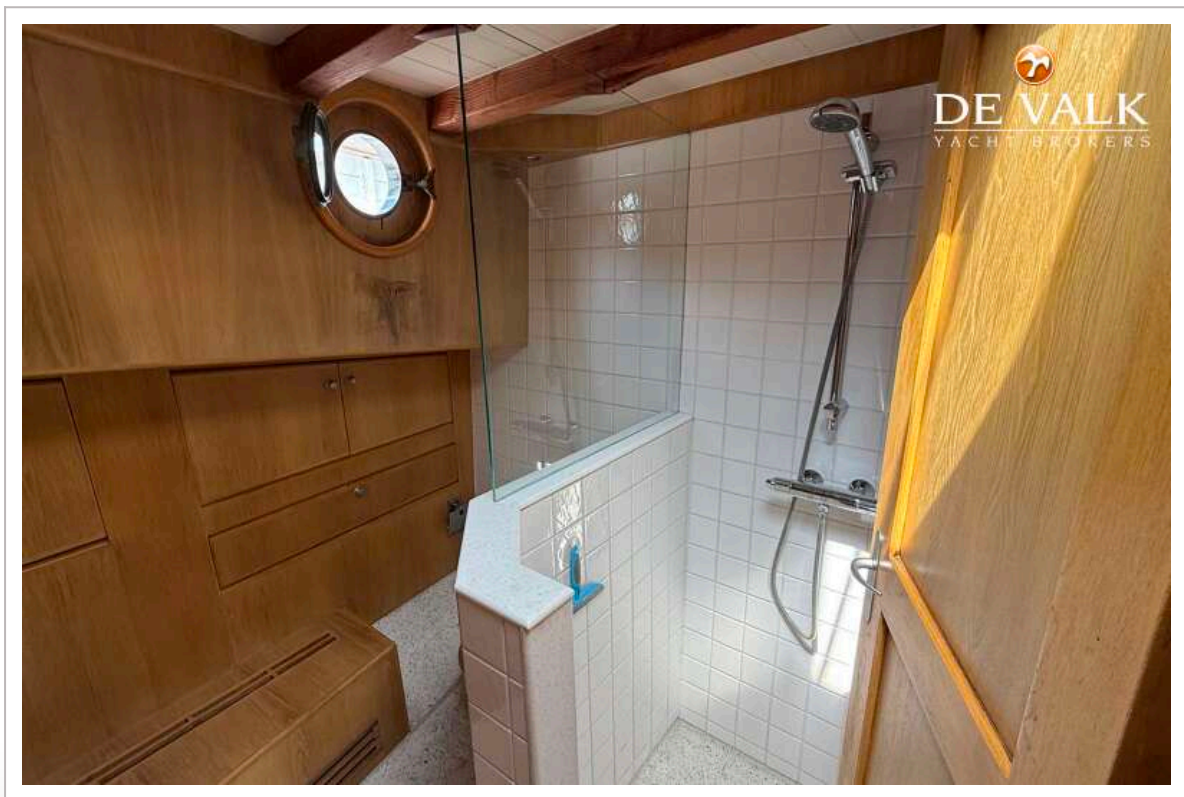
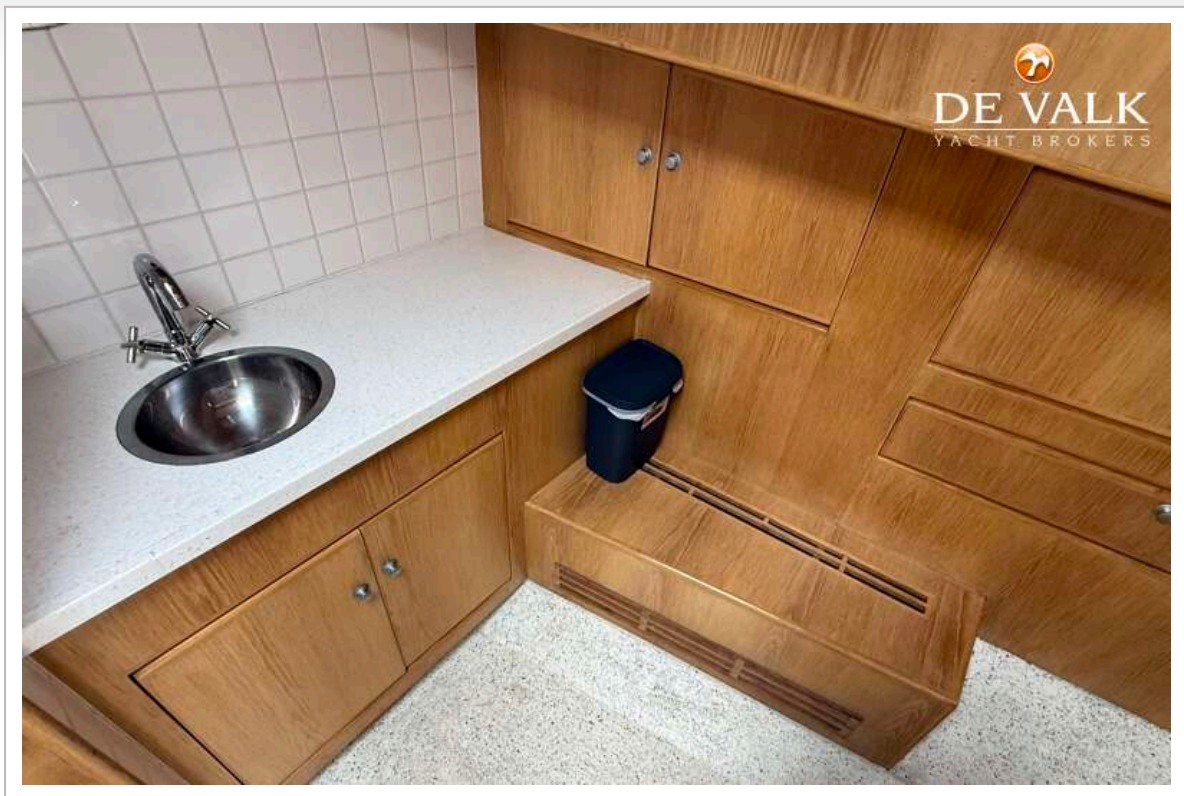
NOORSE ZEILKOTTER



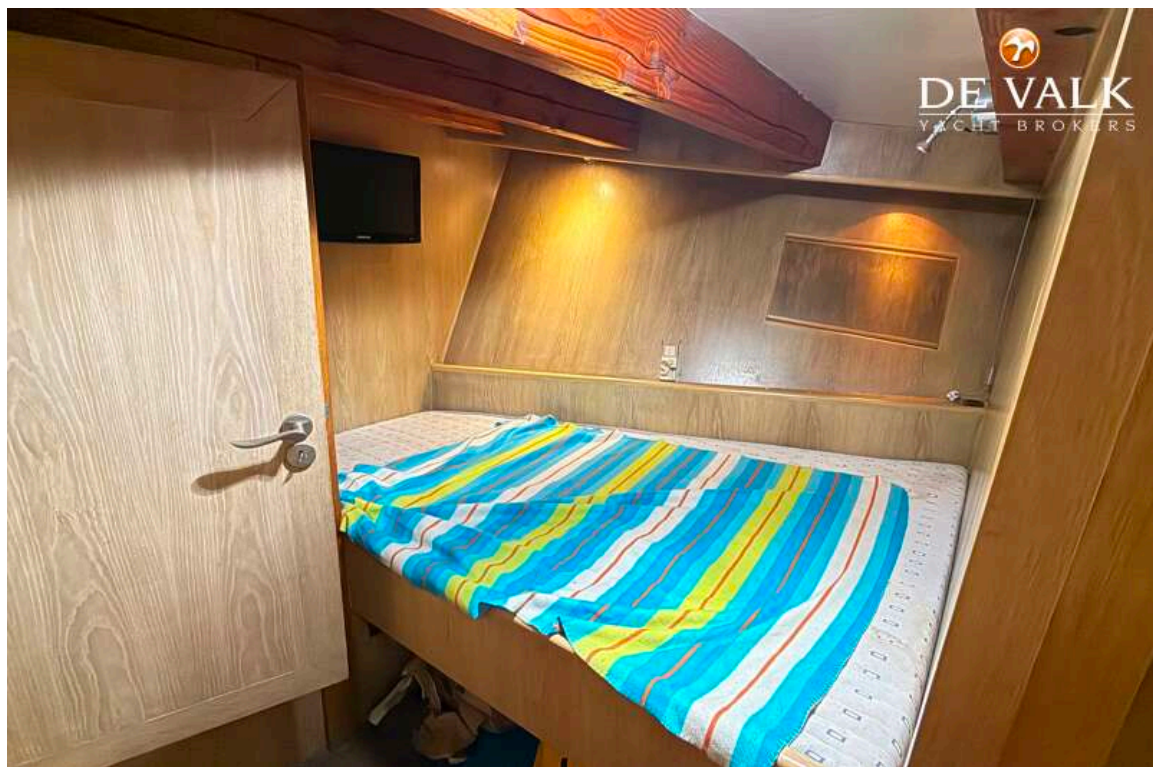
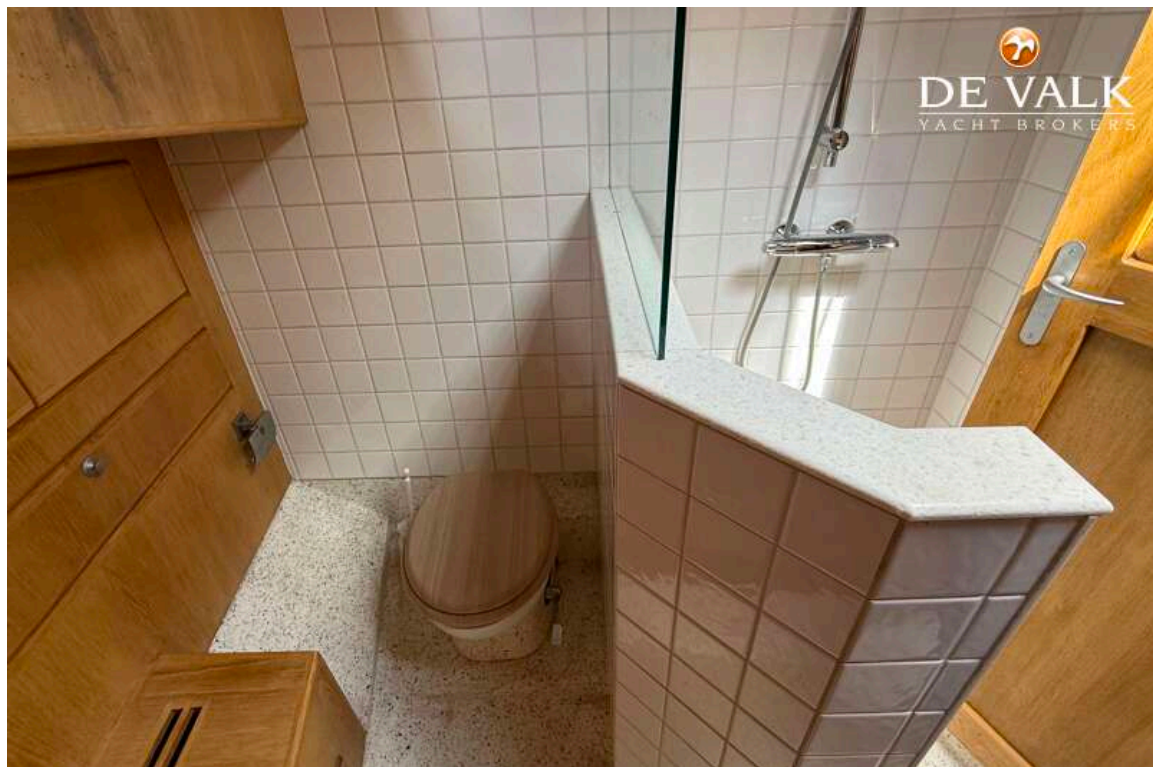
NOORSE ZEILKOTTER



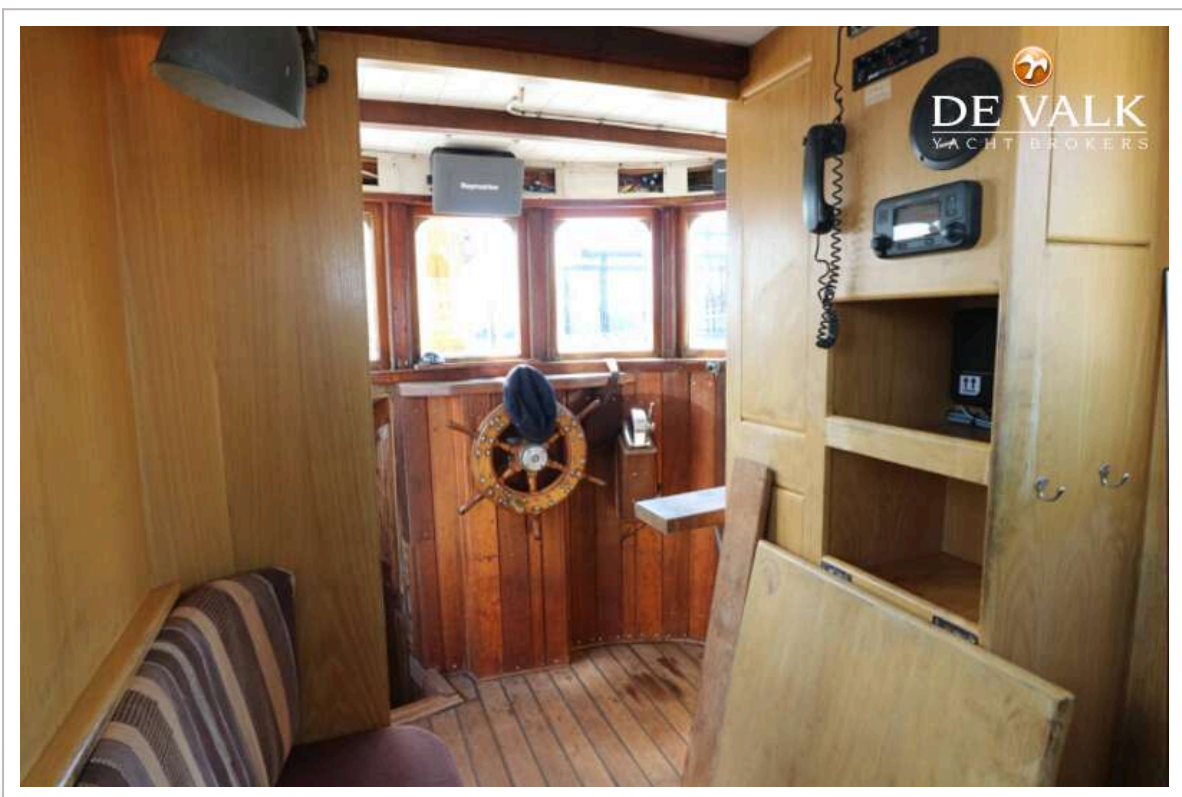
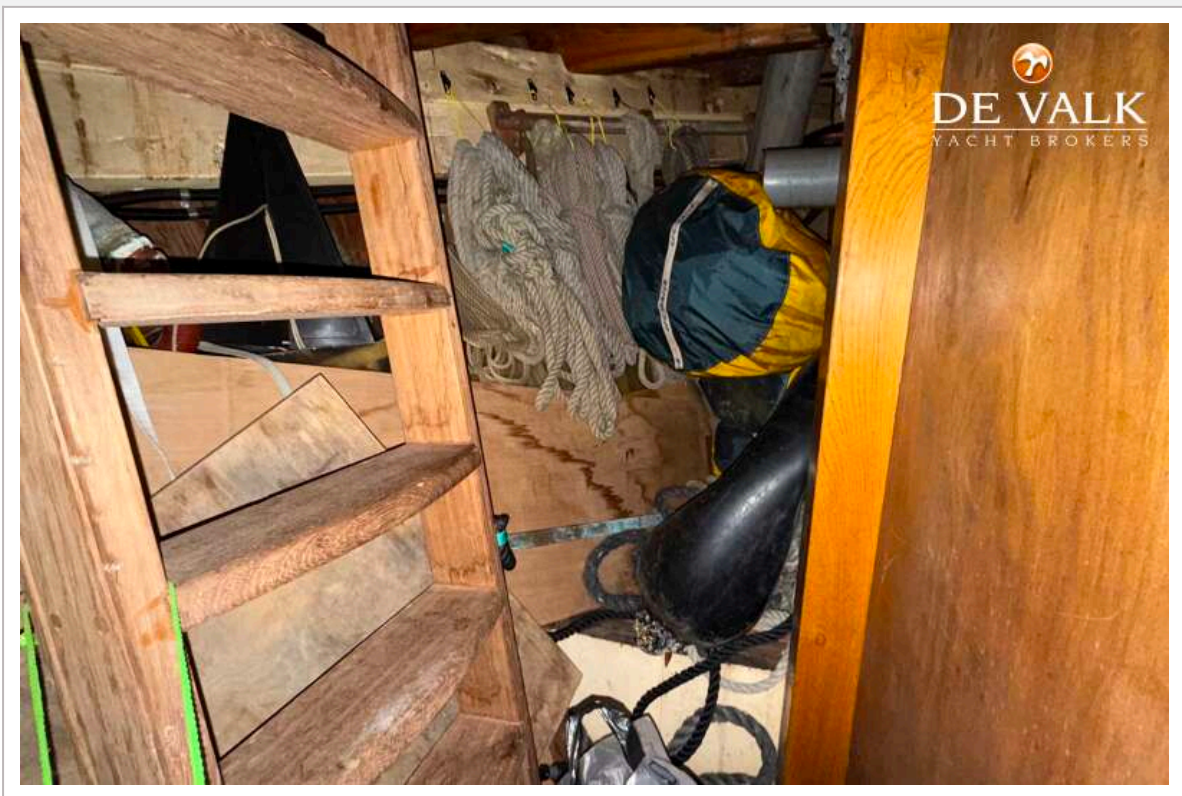
NOORSE ZEILKOTTER



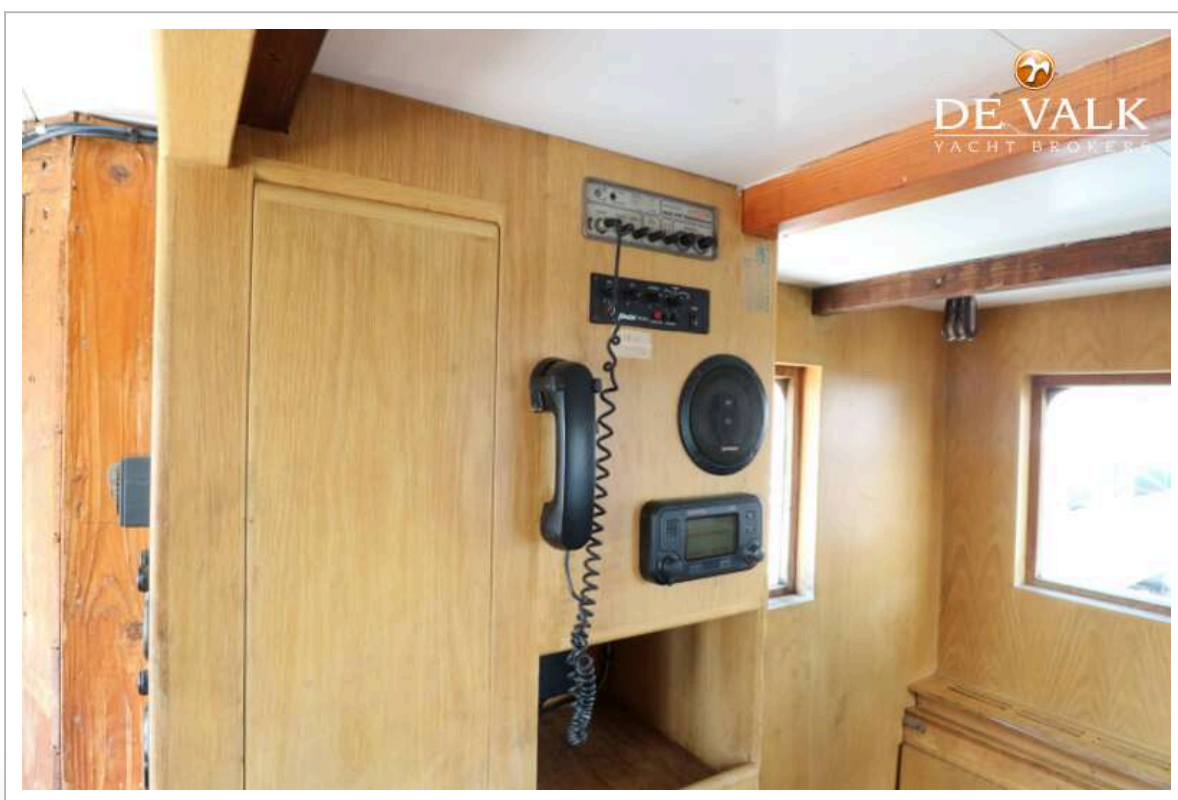
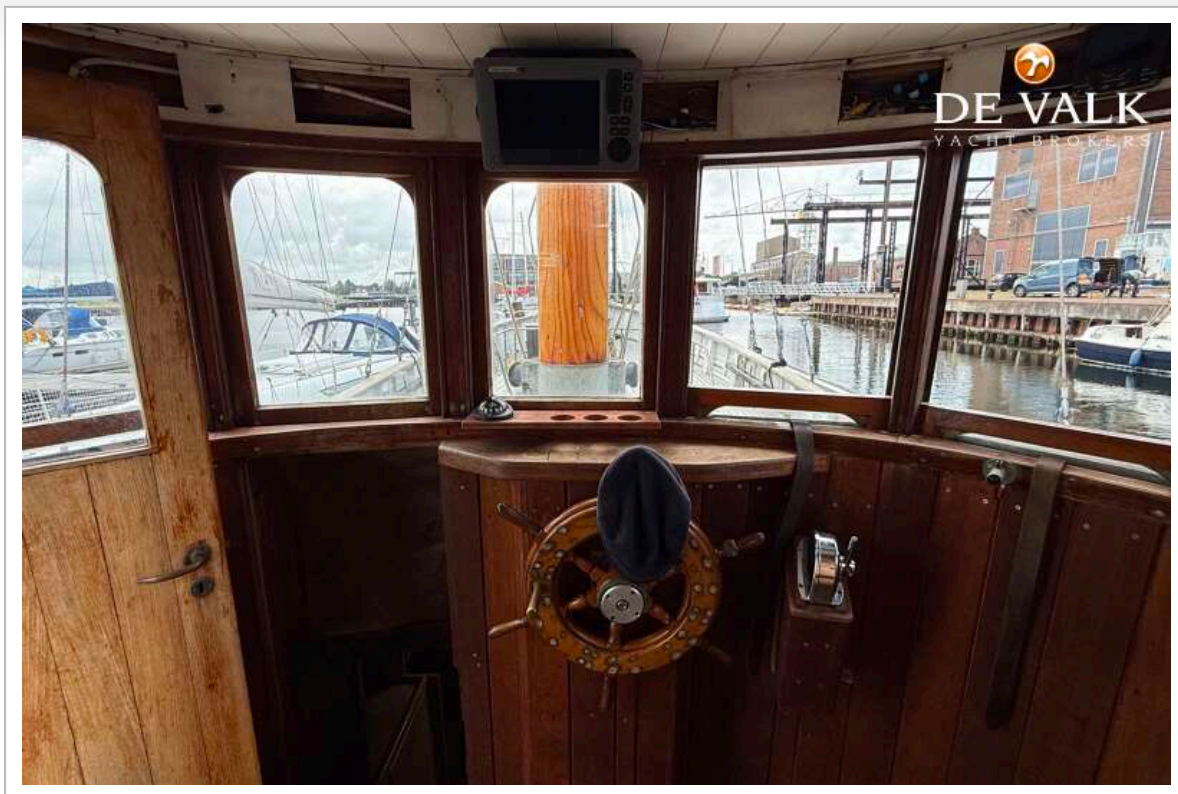
NOORSE ZEILKOTTER



NOORSE ZEILKOTTER



NOORSE ZEILKOTTER



NOORSE ZEILKOTTER

