



DE VALK
YACHT BROKERS



ALTENA 54 NG



DE VALK
YACHT BROKERS

ALTENA 54 NG

BROKER'S COMMENTS

The Altena 54' NG (Next Generation) is an elegant yacht with a tough exterior. The hull and superstructure are made of steel. The beautiful lines create a modern look. The underwater hull, is multi-keeled, this emulates the round bilge. The yacht is built to Altena Yachting's standard standards. Only high-quality products and materials are used, guaranteeing high quality.

Mark Hesselmans

SPECIFICATIONS

Dimensions	16.91 x 4.76 x 1.15 (m)	Builder	Altena Yachting
Built	2023	Cabins	2
Material	Steel	Berths	4
Engine(s)	2 x John Deere 4045TFM85 diesel	Hp/Kw	2 x 125.00 (hp), 92.00 (kw)
Asking price	€ 995.000 (VAT Not paid)	Lying	contact Loosdrecht

CONTACT

Sales office	De Valk Loosdrecht B.V.	Telephone	+31 (0)35 582 90 30
Address	't Breukeleveense Meentje 6 1231LM Loosdrecht / Wijdmeren NL	E-mail	loosdrecht@devalk.nl

DISCLAIMER

These particulars are given in good faith as supplied but cannot be guaranteed.



ALTENA 54 NG

GENERAL

Model	ALTENA 54 NG
Type	motor yacht
LOA (m)	16,91
Beam (m)	4,76
Draft (m)	1,15
Air draft (m)	5,14
Year built	2023
Builder	Altena Yachting
Country	The Netherlands
Designer	Trimm Design
Displacement (t)	40
CE norm	B
Hull material	steel
Hull colour	grey
Hull thickness (mm)	6mm
Hull shape	multi hard chine
Superstructure material	steel
Deck material	steel
Deck finish	synthetic teak
Cockpit deck finish	synthetic teak
Antifouling (year)	2023
Window frame	steel
Window material	glass
Deckhatch	1x
Portholes	yes
Radar arch	collapsible
Mast can be lowered	electric
Fuel tank (litre)	steel 3500
Level indicator (fuel tank)	yes
Freshwater tank (litre)	steel 2000L



Blackwater tank (litre)	steel 1000L
Level indicator (blackwater)	yes
Blackwater tank extraction	deck extraction + pump
Wheel steering	hydraulic
Inside helm position	yes
Extra info	2x spud poles fwd and aft

ACCOMMODATION

Cabins	2
Berths	4
Interior	mahogany
Floor	parquet
Aft deck	yes
Pilot house	yes
Saloon	yes
Sliding roof	electric
Heating	diesel ducted hot air Kabola KB20 centrale verwarming + vloerverwarming + aircondition
Air-conditioning	reverse cycle airco
Dinette	yes
Opening door to aft deck	yes
Countertop	Duropol
Sink	stainless steel
Cooker	electric Siemens 4-pits
Oven	AEG combi
Extractor	yes
Fridge	2x Isotherm
Freezer	Isotherm
Hot water system	220V or central heating
Water pressure system	electrical
Dishwasher	Atag



Owners cabin	double bed
Bed length (m)	2,00 x 1,80 M
Wardrobe	hanging/drawers/shelves
Bathroom	en suite
Toilet	en suite
Toilet system	electric
Wash basin	in the bathroom
Shower	en suite
Guest cabin 1	double bed
Bed length (m)	2,00 X 1,60 M
Wardrobe	hanging and shelves
Bathroom	en suite
Toilet	en suite
Toilet system	electric
Wash basin	in the bathroom
Shower	en suite
Washing machine	Siemens IQ300
Dryer	Siemens IQ500

MACHINERY

No of engines	2
Make	John Deere
Type	4045TFM85
HP	125
kW	92
Fuel	diesel
Engine hours	22
Engine cooling system	freshwater heat exchanger
Drive	shaft
Engine controls	electrical Hydronautica
Gearbox	hydraulic ZF 45-1



Bowthruster	hydraulic Side-power HS 240
Sternthruster	hydraulic Side-power HS 240
Exhaust	watercooled
Propeller type	fixed
Propeller shaft material	stainless steel
Shaft lubrication	water
Electric bilge pump	yes
Bilge alarm	yes
Generator	Onan Marine generator 9.5kW MDKDM
Start battery	Optima RED
Service battery	3x Mastervolt
Battery charger	2 x Mastervolt Mass Combi Pro 24V / 3500W / 100Amp
Inverter	2 x Mastervolt Mass Combi Pro 24V / 3500W / 100Amp
Shorepower	with cable
Stabilizers	No, but preparations are made

NAVIGATION

Electric compass	Yachtcontrol
Multi control display	2x Yachtcontrol
Depth sounder/log	Yachtcontrol
VHF	2 x Simrad HS100
Autopilot	Simrad A2004
Rudder angle indicator	Yachtcontrol
Plotter/GPS	Yachtcontrol
Camera	Rear +engineroom
Navigation lights	yes

EQUIPMENT

Fixed windscreen	yes
Cockpit table	yes
Bathing platform	yes



Boarding ladder	yes
Windlass	electrical
Sea railing	stainless steel
Railing side opening gates	2x
Wiper	2x
Horn	yes
Fenders	yes
Mooring lines	yes
Surround Sound System	Fusion MS-RA770
Cockpit speakers	yes
Speakers in salon	yes
Speakers in cabin	yes



ALTENA 54 NG



ALTENA 54 NG



ALTENA 54 NG



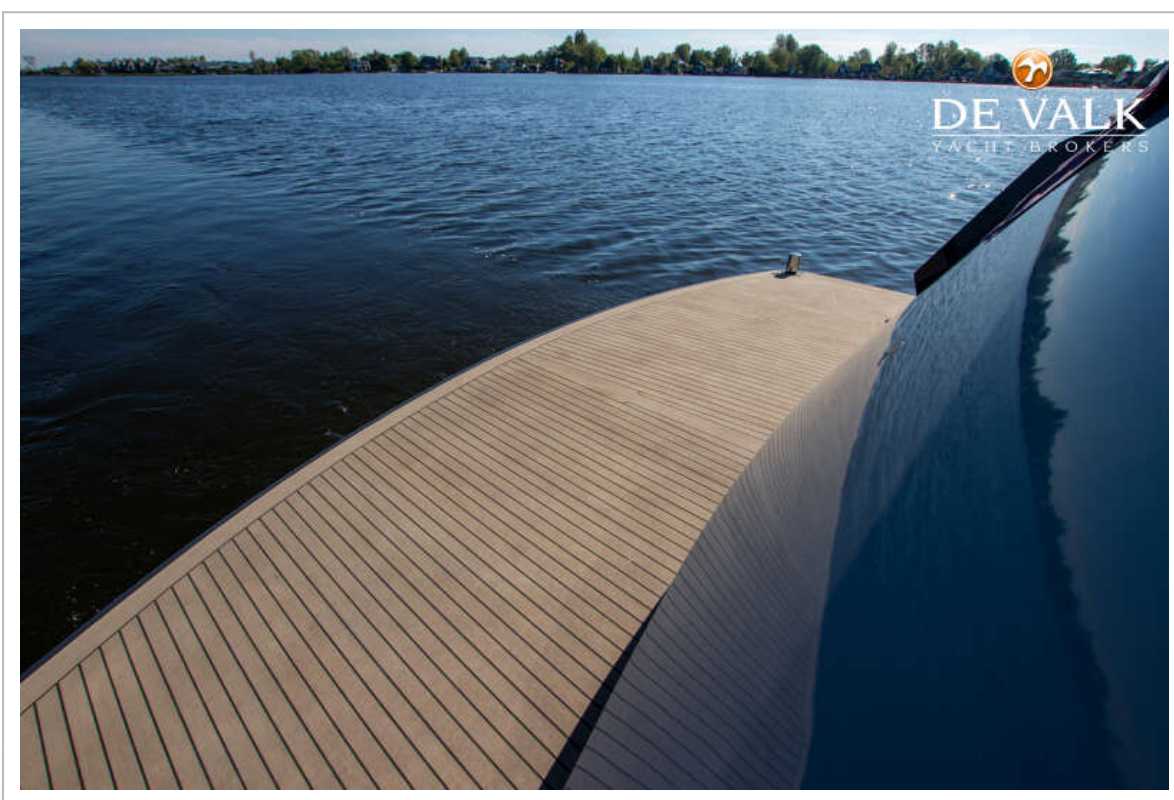
ALTENA 54 NG



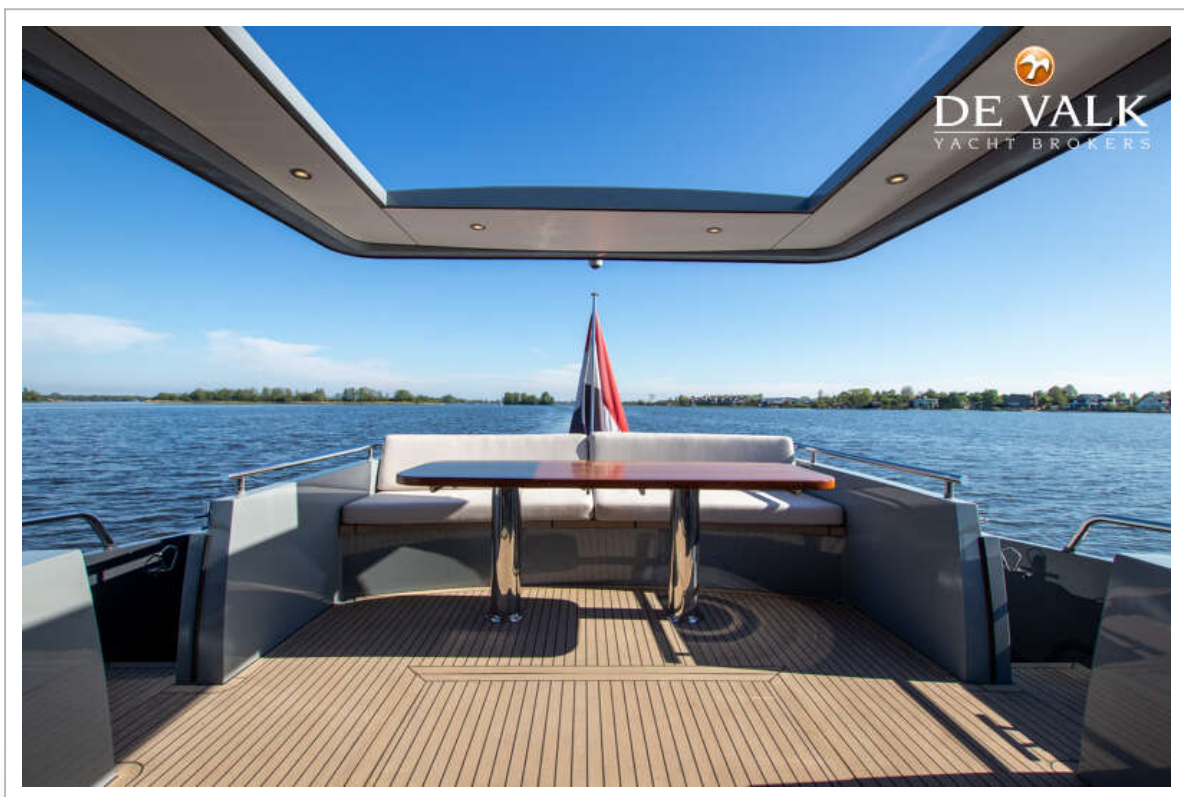
ALTENA 54 NG



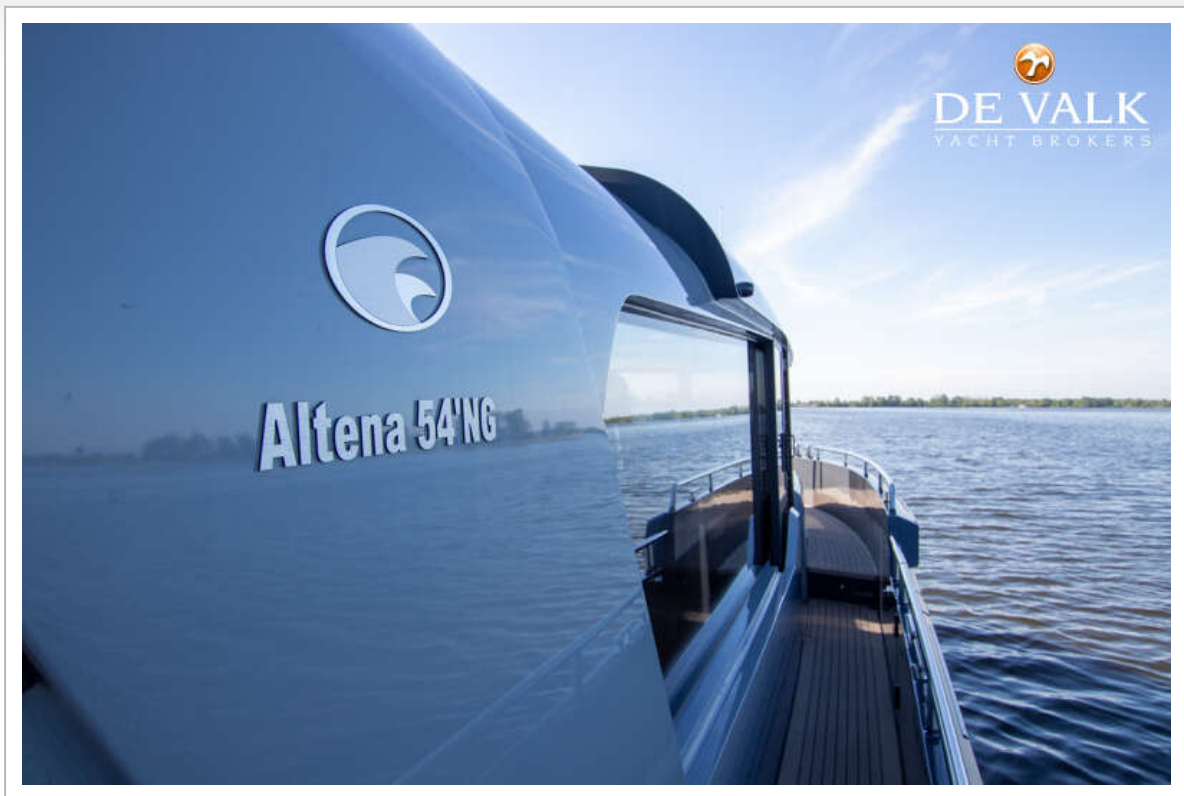
ALTENA 54 NG



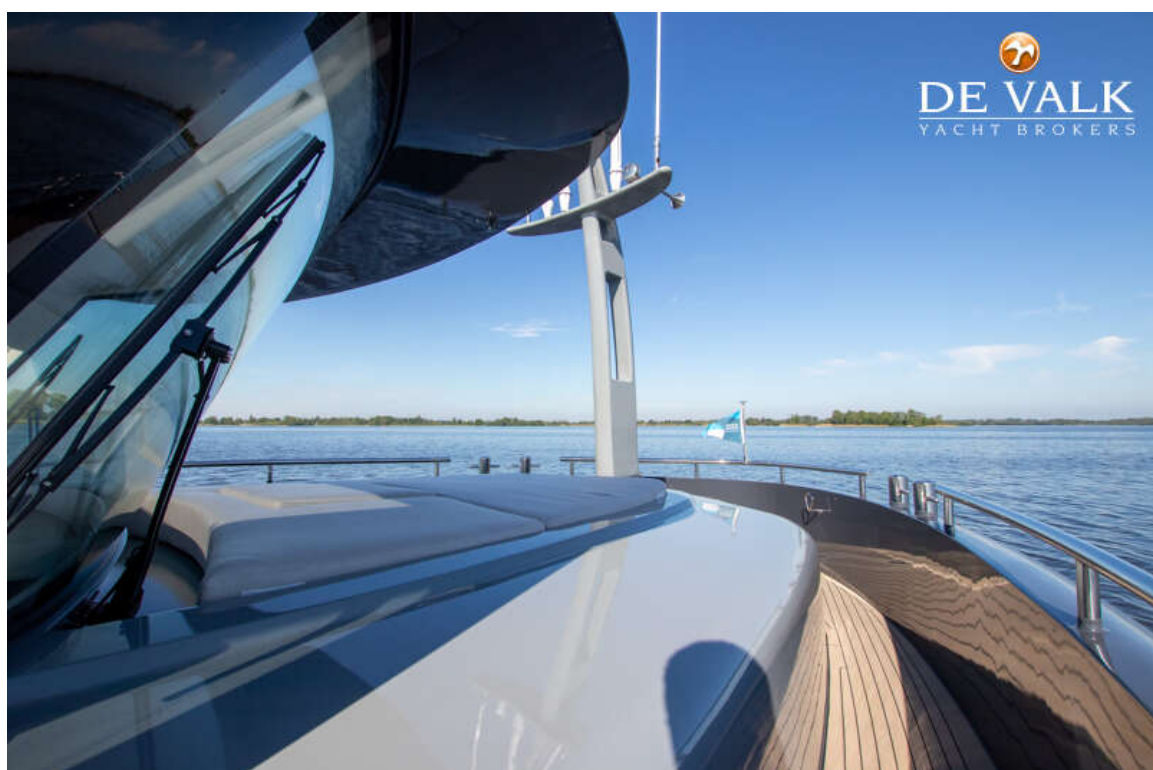
ALTENA 54 NG



ALTENA 54 NG



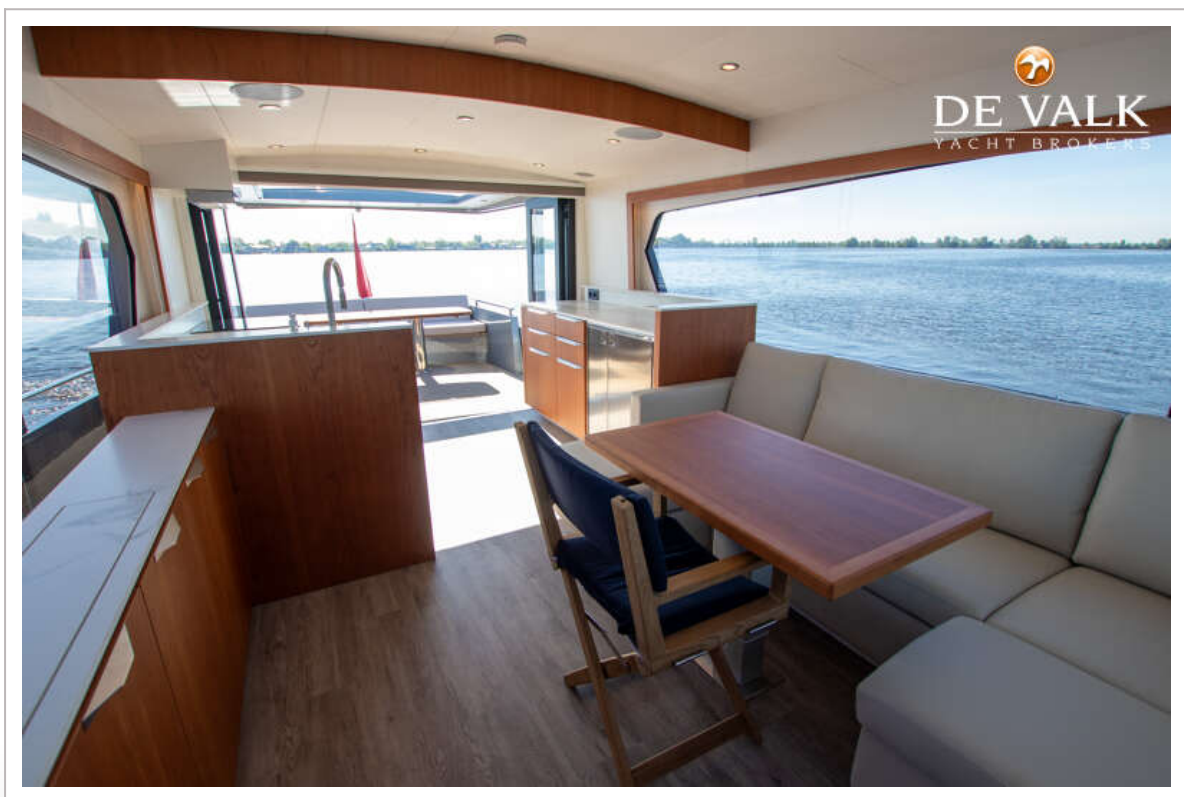
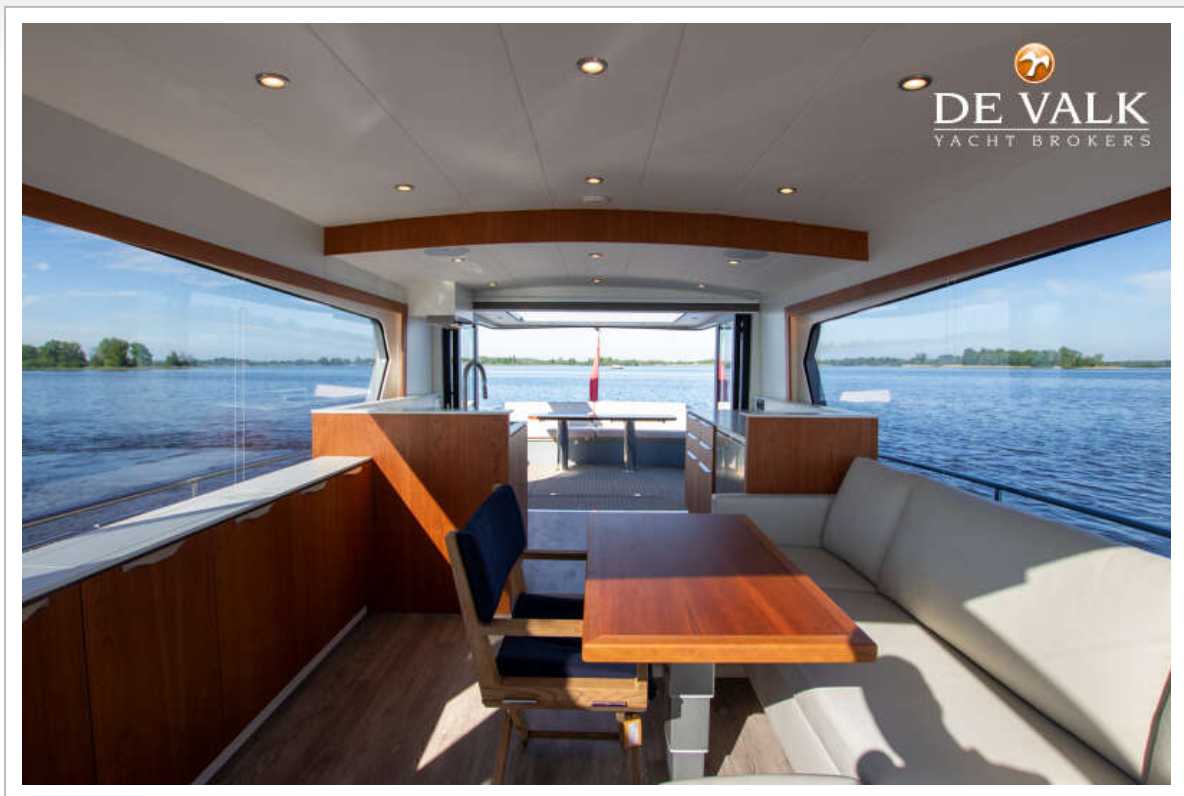
ALTENA 54 NG



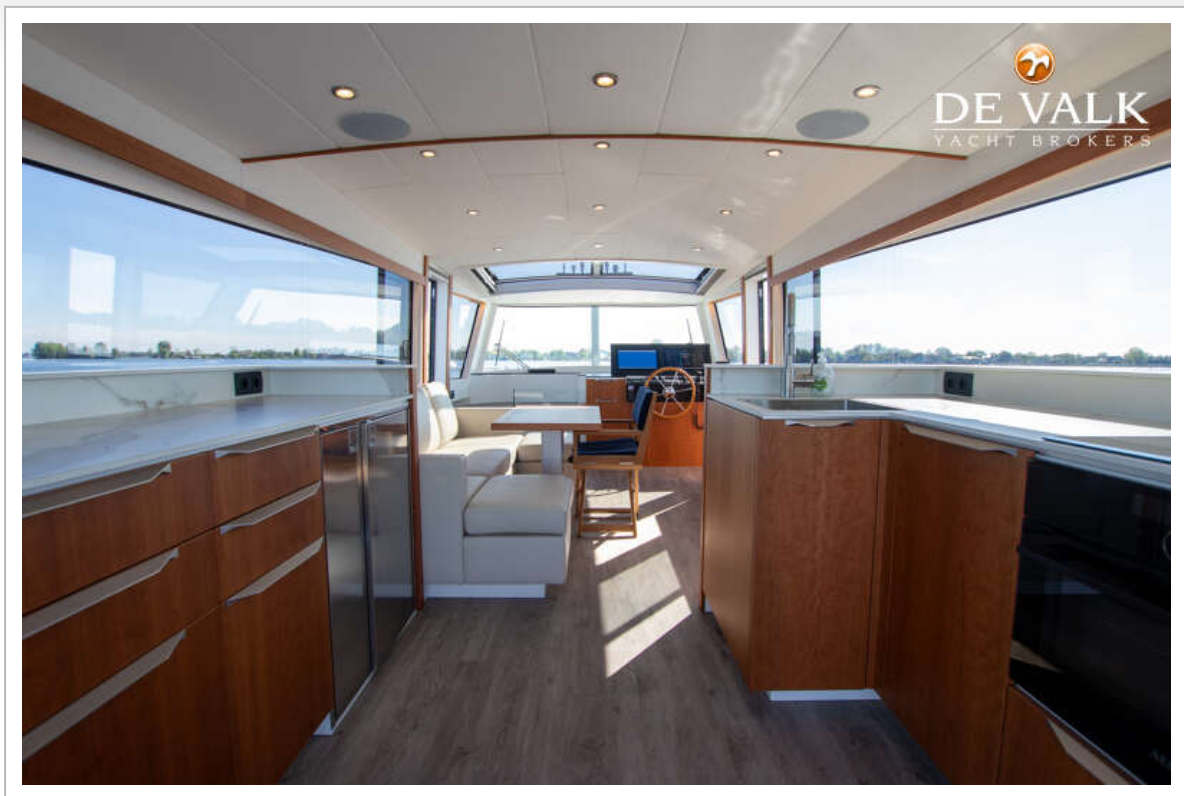
ALTENA 54 NG



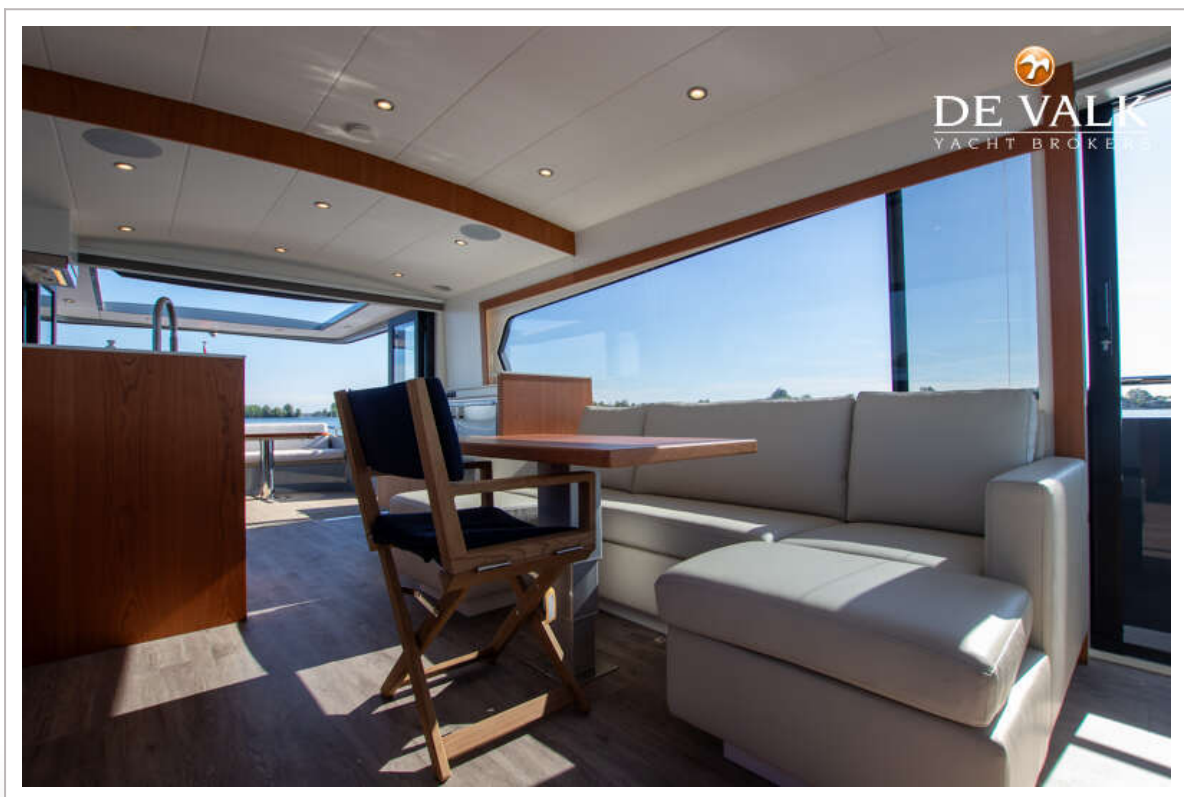
ALTENA 54 NG



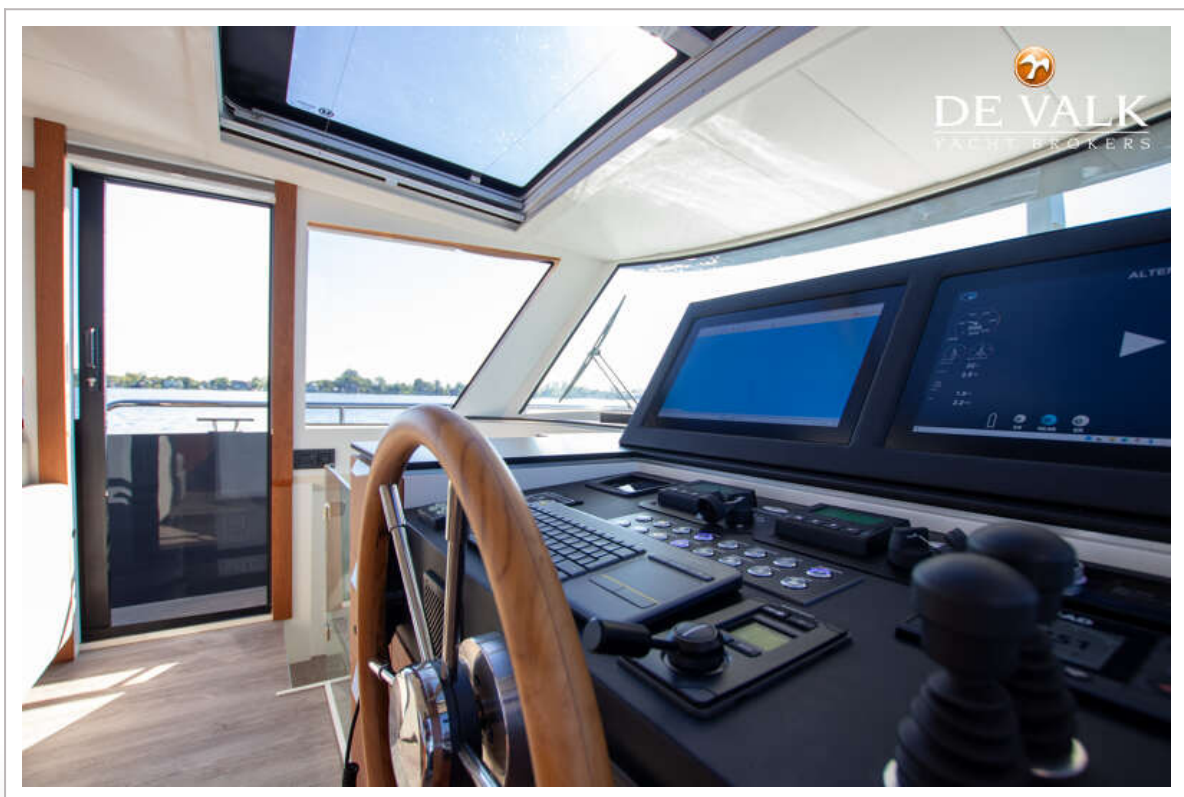
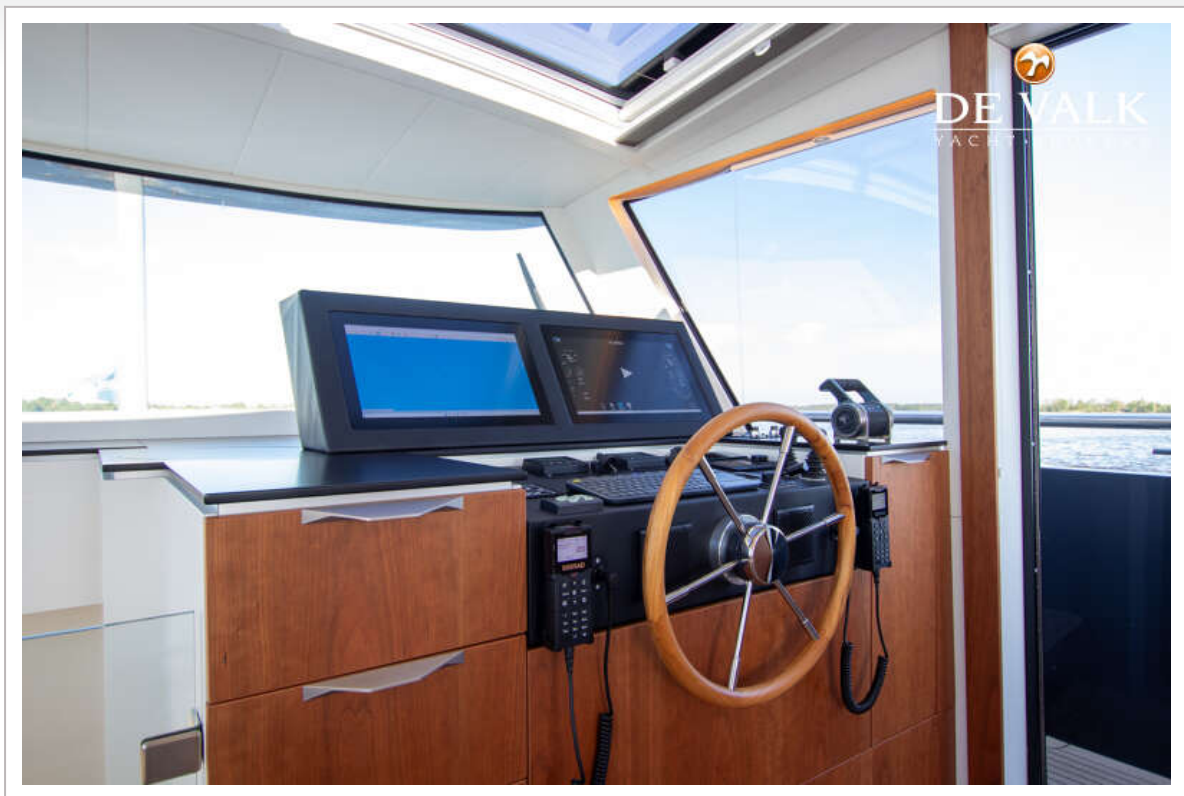
ALTENA 54 NG

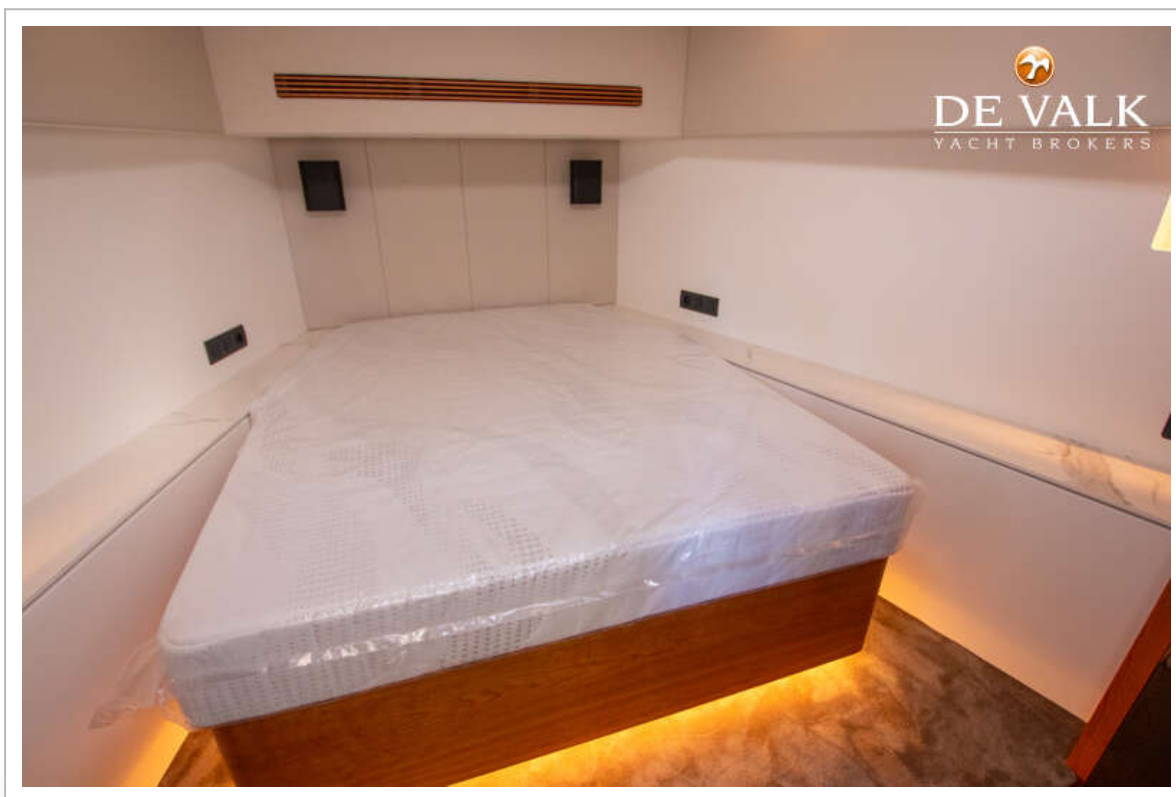
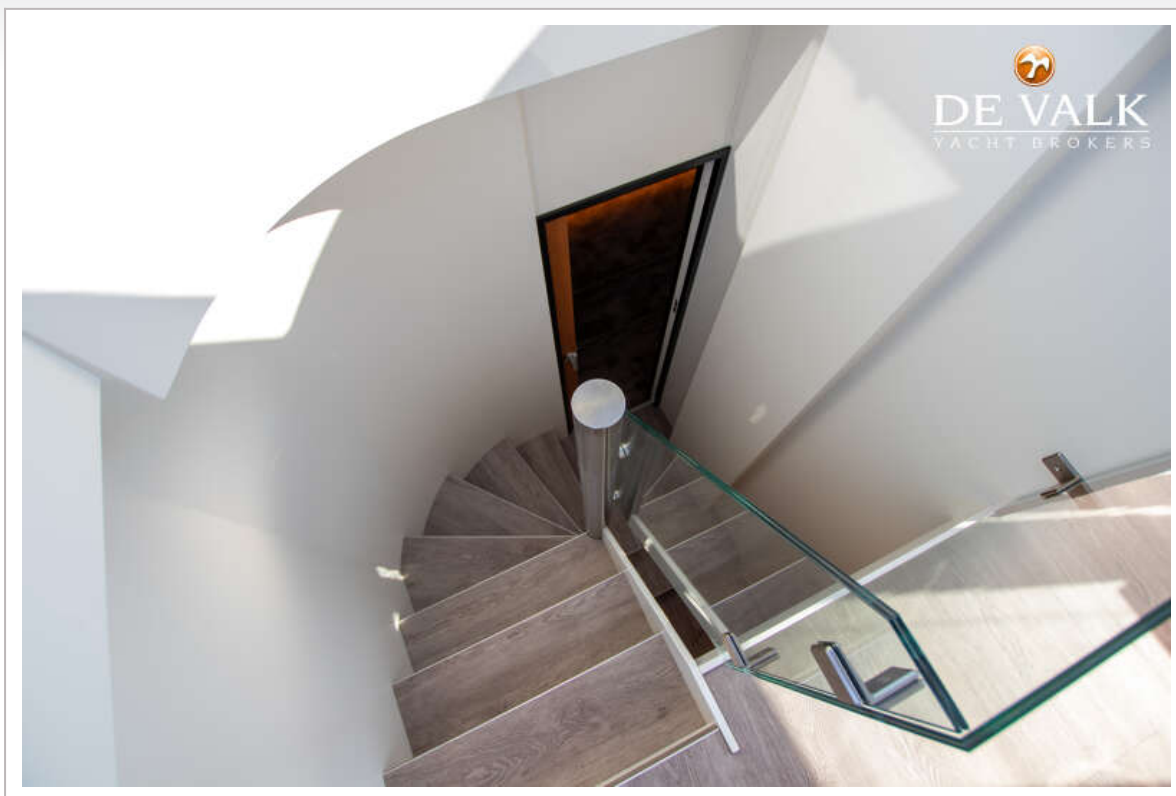


ALTENA 54 NG

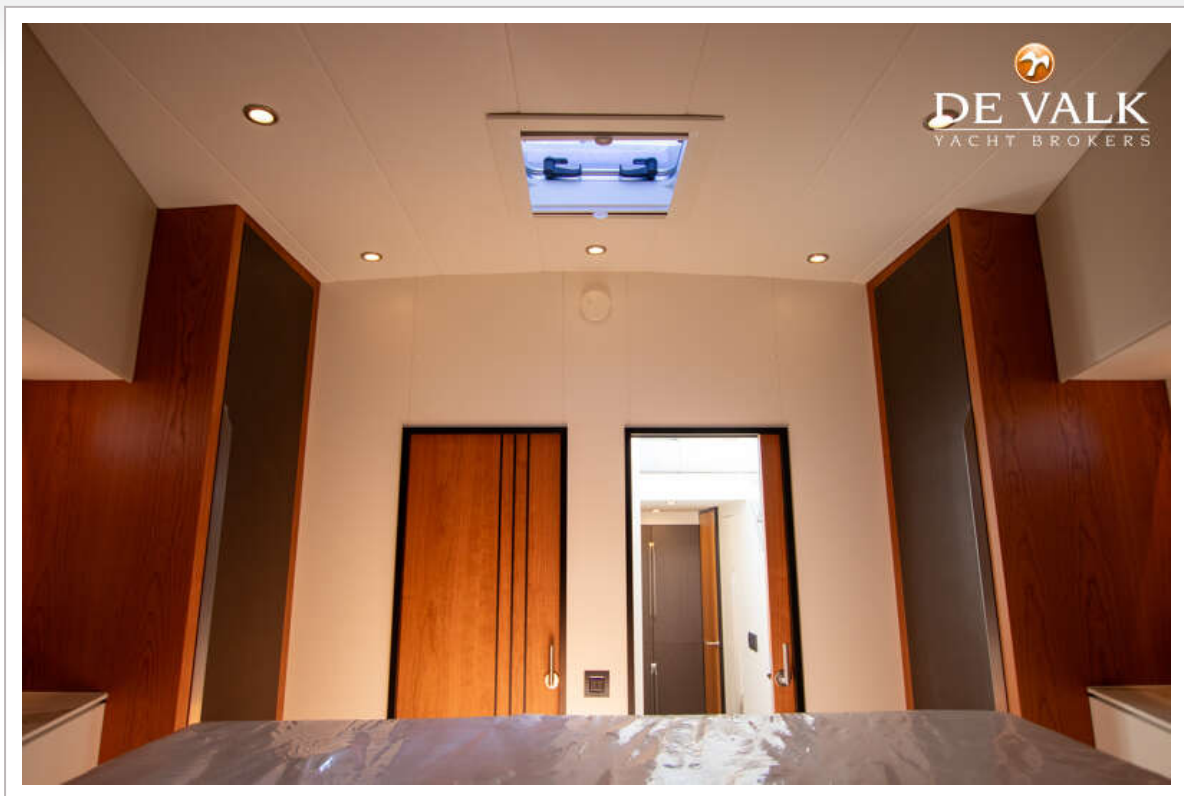


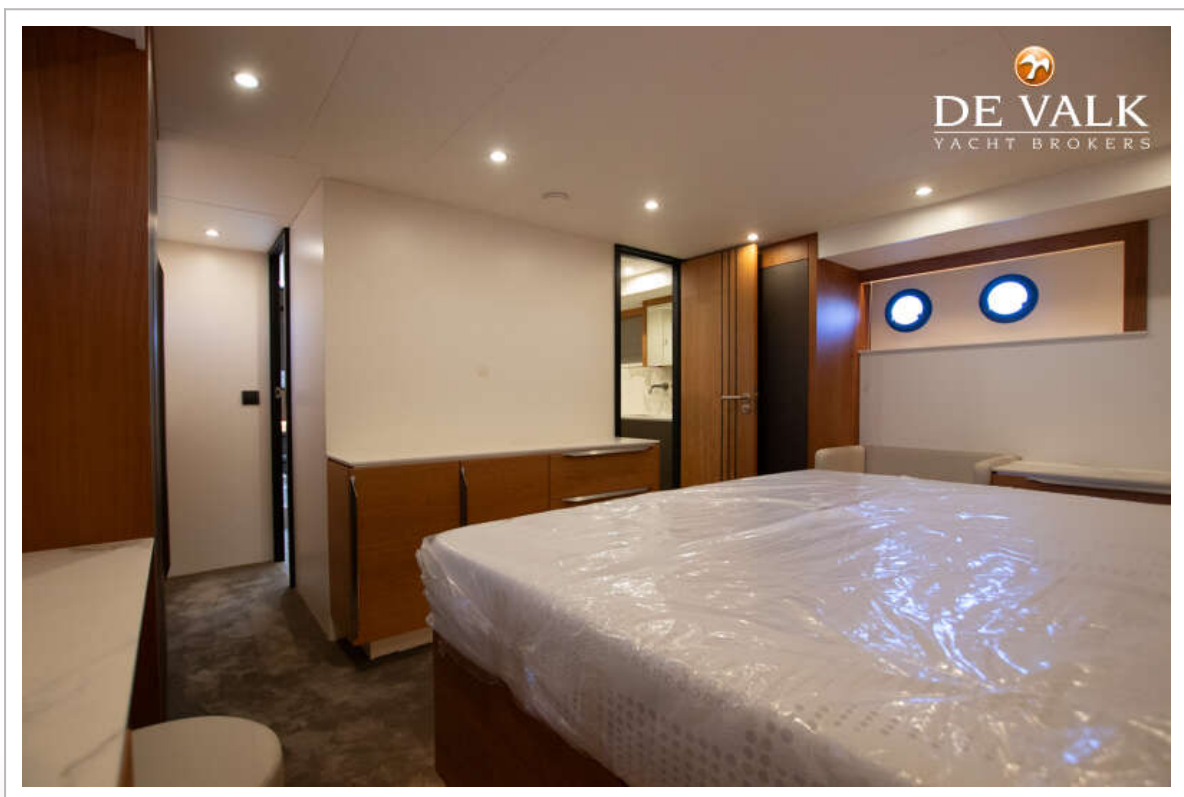
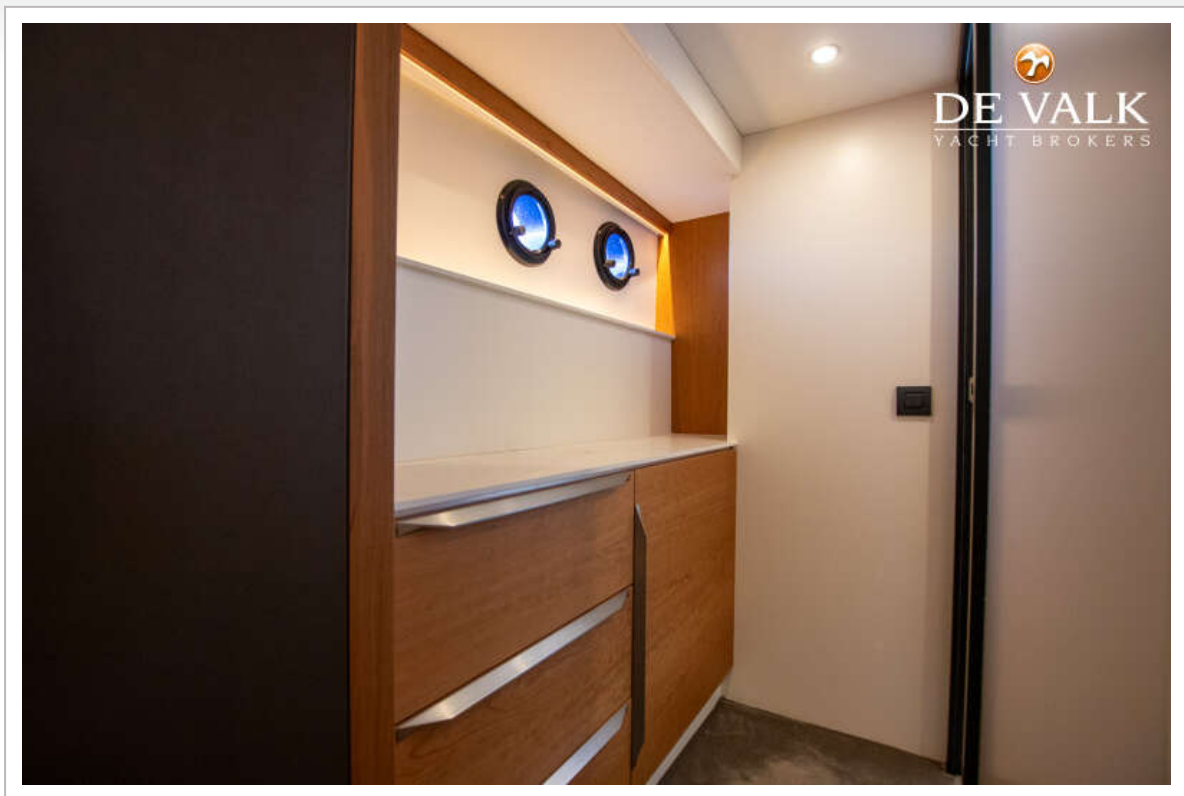
ALTENA 54 NG



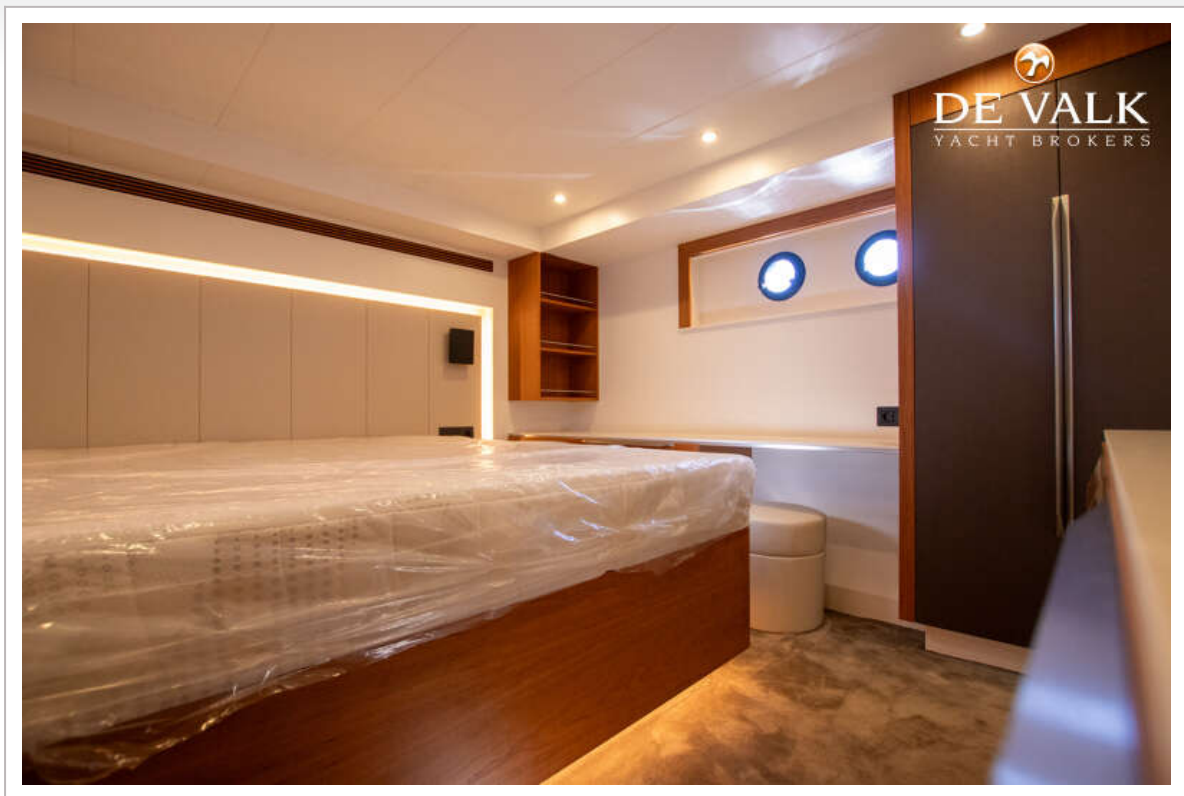


ALTENA 54 NG





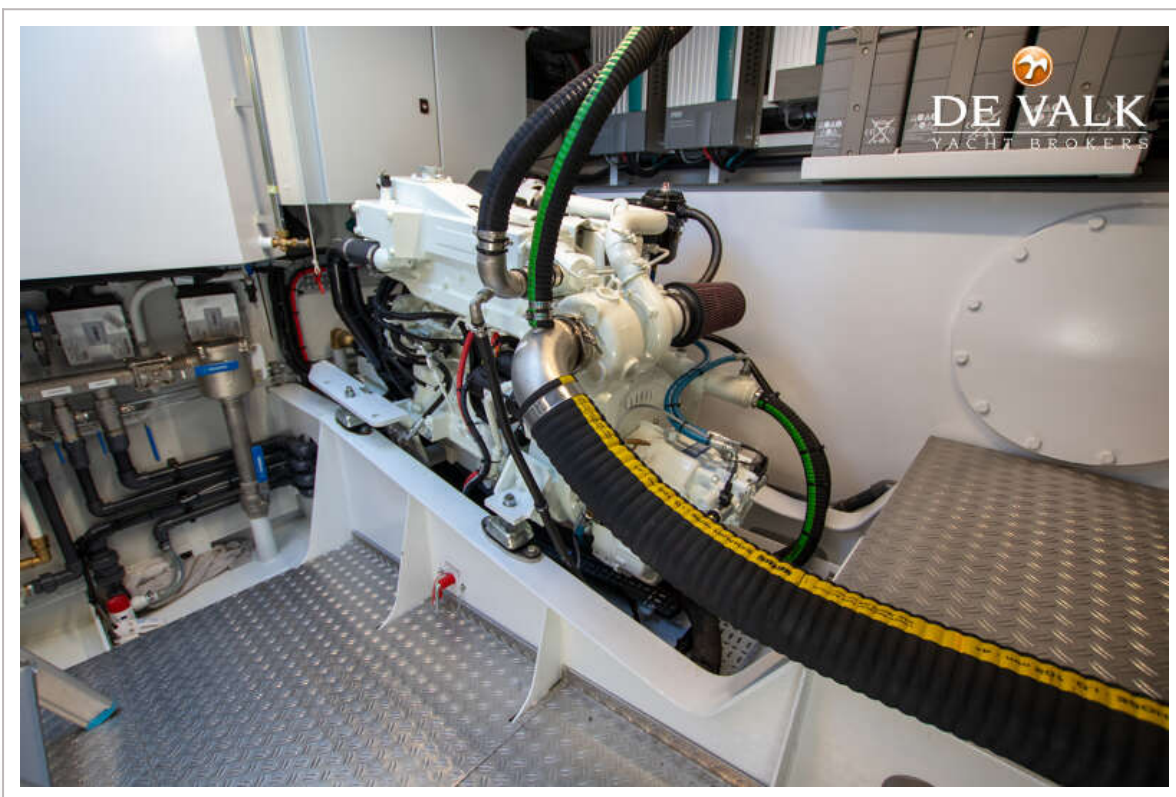
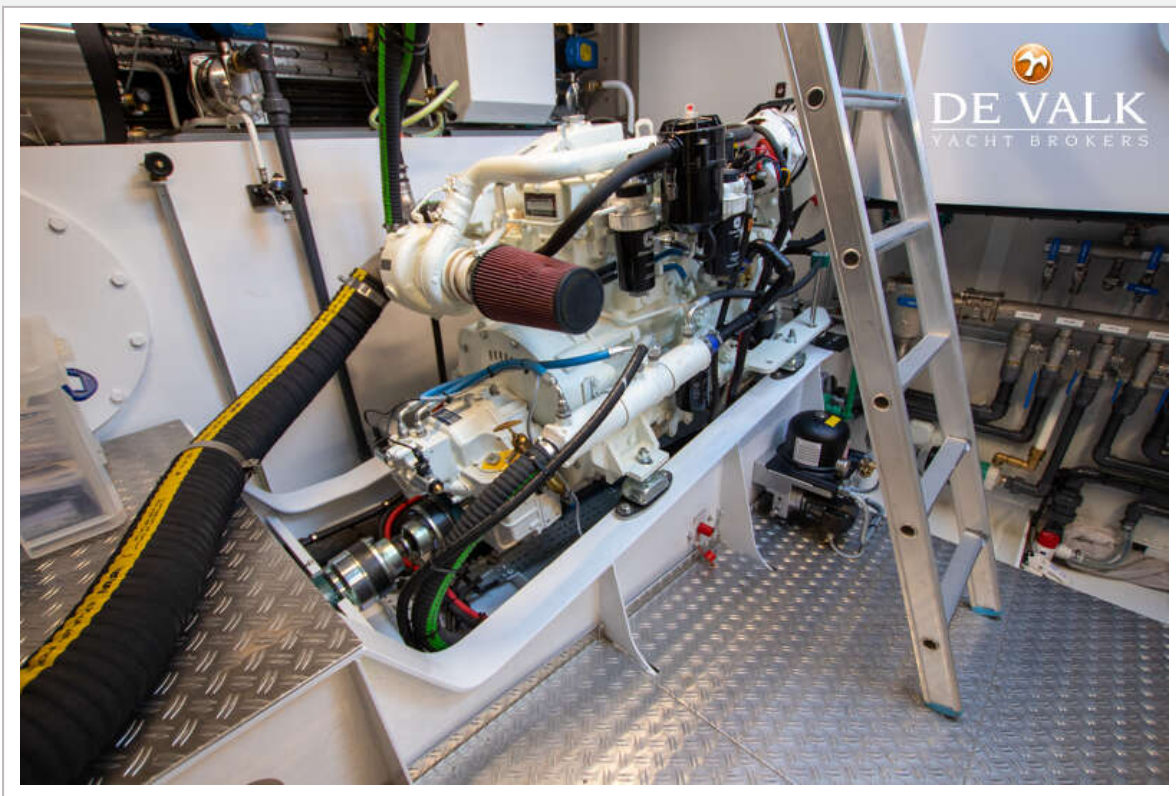
ALTENA 54 NG



ALTENA 54 NG



ALTENA 54 NG



ALTENA 54 NG

