



VAN DER VALK RAISED PILOTHOUSE 27M

VAN DER VALK RAISED PILOTHOUSE 27M

BROKER'S COMMENTS

Step aboard at this beautiful Van Der Valk Raised Pilothouse 27m and experience elegance on the waves! You will have an unforgettable journey on this stunning superyacht, where luxury meets tranquillity. This Van Der Valk Raised Pilothouse 27m from 2021 has a master cabine, a VIP cabine and 2 guest cabines. Each cabine has it's own bathroom ensuite. It's a perfect boat for family trips. There are also 2 cabines for 3 crew members. She is fully equipped, very well maintained and she has 2 MTU engines to give enough power to reach approx 27 knots. A beauty at sea waiting for her new owner !

Eric Lamers

SPECIFICATIONS

Dimensions	27.30 x 6.25 x 1.80 (m)	Builder	Van Der Valk
Built	2021	Cabins	4
Material	Aluminium	Berths	8
Engine(s)	2 x MTU 12V2000M96L diesel	Hp/Kw	2 x 1,920.00 (hp), 1,413.12 (kw)
Asking price	€ 4.950.000 (VAT Not paid)	Lying	contact Antibes

CONTACT

Sales office	De Valk Antibes	Telephone	+33 492 91 0202
Address	2, Avenue de Verdun 06600 Antibes FR	E-mail	antibes@devalk.nl

DISCLAIMER

These particulars are given in good faith as supplied but cannot be guaranteed.



VAN DER VALK RAISED PILOTHOUSE 27M

GENERAL

Model	VAN DER VALK RAISED PILOTHOUSE 27M
Type	motor yacht
LOA (m)	27,30
LWL (m)	20,68
Beam (m)	6,25
Draft (m)	1,80
Year built	2021
Builder	Van Der Valk
Country	The Netherlands
Designer	Guido de Groot Design
Displacement (t)	73
Gross tonnage	129
Hull material	aluminium
Hull colour	Light blue
Hull shape	hard chine
Superstructure material	aluminium
Deck material	teak
Deck finish	teak
Superstructure deck finish	teak
Cockpit deck finish	teak
Antifouling (year)	2023
Portholes	stainless steel
Insulation	rockwool
Flybridge	yes
Flybridge cockpit cover	yes
Flybridge suncover	yes
Radar arch	yes
Fuel tank (litre)	aluminium 8500
Fuel tank 2 (litre)	aluminium
Level indicator (fuel tank)	yes



VAN DER VALK RAISED PILOTHOUSE 27M

Freshwater tank (litre)	aluminium 1900
Level indicator (freshwater)	yes
Blackwater tank (litre)	aluminium 2000
Level indicator (blackwater)	yes
Blackwater tank extraction	deck extraction + pump
Greywater tank (litre)	aluminium
Level indicator (greywater)	yes
Wheel steering	yes
Inside helm position	yes
Flybridge helm position	yes
More info on hull	AlMg4,5 Mn - H321/H111
More info on paintwork	Painted with High Quality 2-component Alexseal system Alexseal
Extra info	Classification: MCA-MGN-280 Vessel Op.Cat. 2

ACCOMMODATION

Cabins	4
Berths	8
Crew cabin	2
Crew berths	3
Layout	yes
Floor	teak
Aft deck	yes
Pilot house	yes
Saloon	yes
Headroom saloon (m)	yes
Heating	floor heating Kabola
Heating 2	central heating Kabola
Air-conditioning	reverse cycle airco Clion marine
Navigation center	yes
Chart table	yes
Dining room	yes



VAN DER VALK RAISED PILOTHOUSE 27M

Sliding door to aft deck	yes
Galley	yes
Countertop	corian
Sink	yes
Cooker	Miele
Oven	Miele
Extractor	Miele
Microwave/oven combi	Miele
Fridge	Miele
Freezer	Miele
Wine cooler	Miele
Hot water system	220V or central heating Kabola KB75 combi
Water pressure system	electrical
Dishwasher	Miele
Hot water tap	Quooker
Ice maker	Miele
Coffee maker	Miele
Crockery	yes
Owners cabin	French bed
Bed length (m)	2.00
Wardrobe	drawers and shelves
Bathroom	en suite
Toilet	en suite
Toilet system	electric
Wash basin	in the bathroom
Shower	en suite
Guest cabin 1	French bed
Bed length (m)	2.00
Wardrobe	drawers and shelves
Bathroom	en suite
Toilet	en suite
Toilet system	electric



VAN DER VALK RAISED PILOTHOUSE 27M

Wash basin	in the bathroom
Shower	en suite
Guest cabin 2	bunk bed
Bed length (m)	2.00
Wardrobe	drawers and shelves
Bathroom	separate
Toilet	separate
Toilet system	electric
Wash basin	in the bathroom
Shower	separate
Guest cabin 3	single bed 2x
Bed length (m)	2.00
Wardrobe	drawers and shelves
Bathroom	yes
Toilet	separate
Toilet system	electric
Wash basin	in the bathroom
Shower	separate
Guest cabin 4	French bed
Bed length (m)	2.00
Wardrobe	drawers and shelves
Bathroom	yes
Toilet	separate
Toilet system	electric
Wash basin	in the bathroom
Shower	separate
Crew cabin(s)	2
Bathroom (crew)	yes
Toilet (crew)	yes
Toilet system	yes
Wash basin	in the bathroom
Shower (crew)	yes



VAN DER VALK RAISED PILOTHOUSE 27M

Washing machine	Miele
Dryer	Miele
Central vacuum cleaner	Beam
Flybridge	yes
Wet bar	yes

MACHINERY

No of engines	2
Make	MTU
Type	12V2000M96L
HP	1920
kW	1413.12
Fuel	diesel
Maximum speed (kn)	27
Cruising speed (kn)	23
Engine hours	587
Drive	shaft
Engine controls	electrical
Gearbox	hydraulic Reduction 3.00:1
Bowthruster	hydraulic 45hp Hydraulic proportional
Sternthruster	hydraulic 35hp Hydraulic proportional
Exhaust	watercooled
Propeller type	fixed
Manual bilge pump	1x Jabsco Ocean Warriort
Electric bilge pump	4x Jabsco 3500 automatic 14.000l/h with signaling
Bilge alarm	yes
Generator	Northern Lights 26kW
Generator 2	Northern Lights 26kW
Batteries	Main engines= 4x 24 Volt 90 amp type AGM
Service battery	2x Mastervolt 24V 1000 amp
Generator battery	2x 12 Volt 90 amp type AGM



VAN DER VALK RAISED PILOTHOUSE 27M

Battery monitor	yes
Battery charger	1x Masterv. 24V 60, 2x Masterv. 12V 10, 2x Masterv. 24V 100
Inverter	2x 4kW Inverter 24/230 Volt
Shorepower	1x 400 Volt 32 amp with isolation transformer. 1 x 230V
Watermaker	Sea Recovery Aquamatic 1800-2. Productivity 284l/h
Stabilizers	Seakeeper 35
Trimtabs	2x Hydrosta

NAVIGATION

Compass	yes
Depth sounder/log	yes
VHF	2x Raymarine's fixed mount Ray90 modular VHF radio
VHF handheld	2x A80289 RayMic Wired Handset Accessory
Autopilot	Raymarine P70R
Rudder angle indicator	yes
Radar	Raymarine Magnum 1x 4 ft open array scanner.
Plotter/GPS	yes
Radar/GPS/plotter	3 x Raymarine AXIOM 19"
Weather receiver	yes
Personal computer	yes
PC connection	yes
Wifi antenna	yes
AIS receiver	Receiver / Transmitter Raymarine AIS 950:
AIS transponder	yes
Radio receiver	yes
Camera	IP camera system 5 cameras
Navigation lights	Lopo light
Searchlight	yes
Loudhailer	Raymarine Ray240E
Extra info	Corian worktops in galley and bathrooms
Extra info	Electric blinds at all areas. 6x underwater lights



EQUIPMENT

Fixed windscreen	yes
Cockpit cover	yes
Bimini	Flybridge made of canvas
Window cover	yes
Cockpit cushions	yes
Cockpit table	Teak
Cockpit chairs	yes
Bathing platform	Opacmare swim ladder
Boarding ladder	stainless steel
Gangway	Opacmare gangway 1.8m behind the hydraulic swim platform
Deck shower	Carbon
Anchor	2x Electric winch with 150kg stainless steel anchor
Anchor chain	150m /13mm stainless steel
Windlass	Maxwell
Capstan	Maxwell
Dinghy	rigid inflatable Williams Sportjet 395
Deck crane	hydraulic Steelhead ES1000 / 450 kg lifting capacity
Grab rail (superstructure)	stainless steel
Life raft	yes
Wiper	3x Double-arm
Horn	yes
Radar reflector	yes
Fenders	yes
Mooring lines	yes
Alarm system	yes
TV	yes
TV receiver	yes
Satellite	yes
Radio-cd player	yes
iPod connection	yes



VAN DER VALK RAISED PILOTHOUSE 27M

Cockpit speakers	yes
Speakers in salon	yes
Speakers in cabin	yes
Fire extinguisher	yes
Extinguisher in engine room	Firepro Automatical aerosol Marine Fire Extinguisher D118
Auto extinguisher system	yes
Extra info	High Quality luxury exterior upholstery.



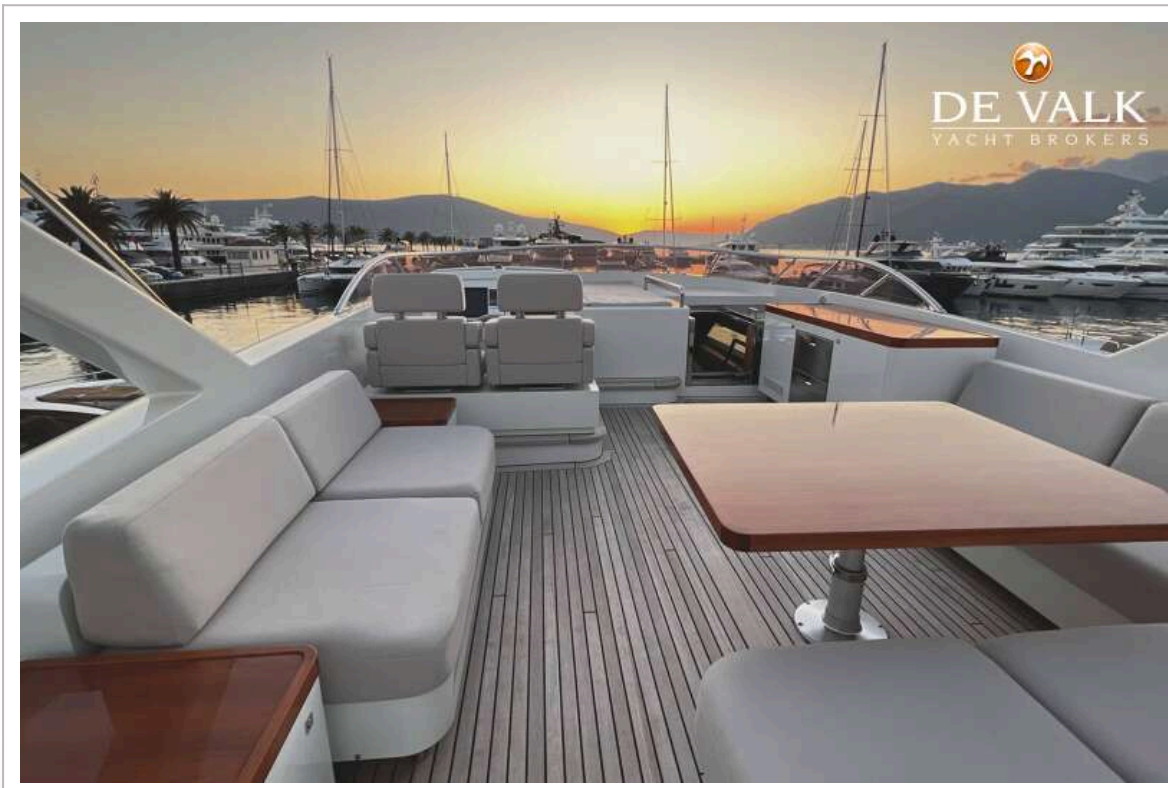
VAN DER VALK RAISED PILOTHOUSE 27M



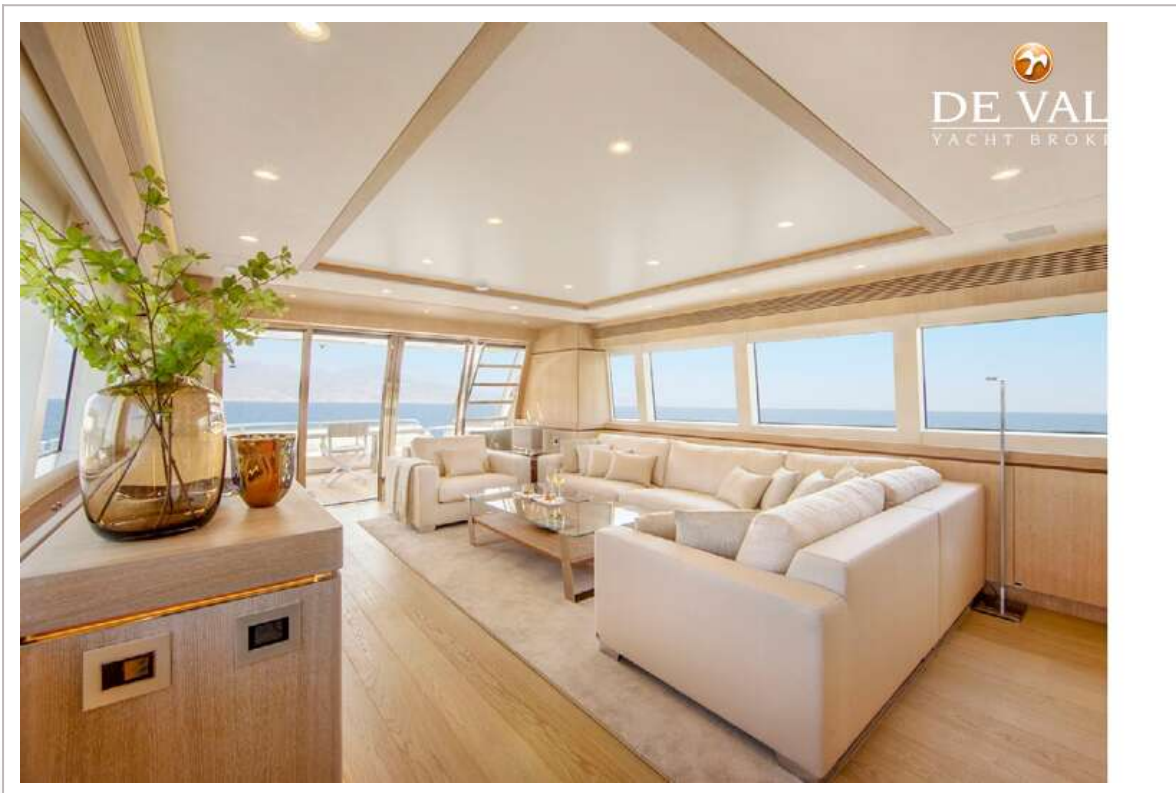
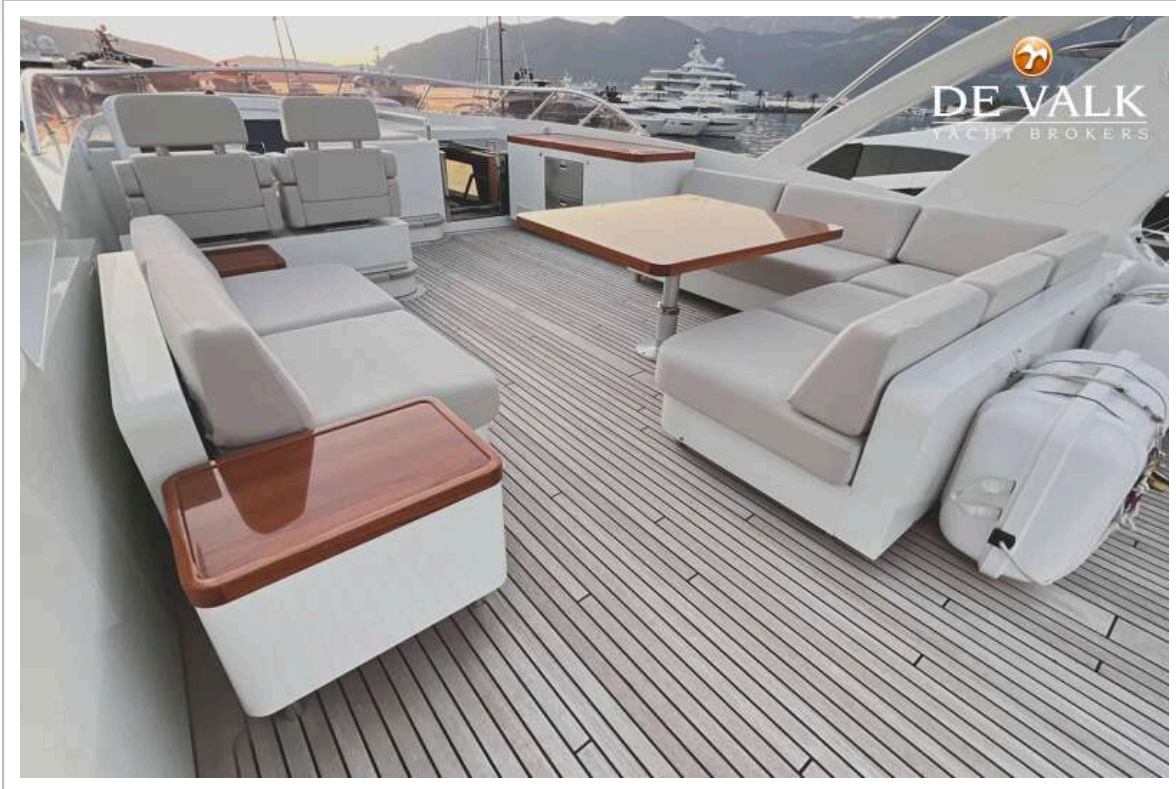
VAN DER VALK RAISED PILOTHOUSE 27M



VAN DER VALK RAISED PILOTHOUSE 27M



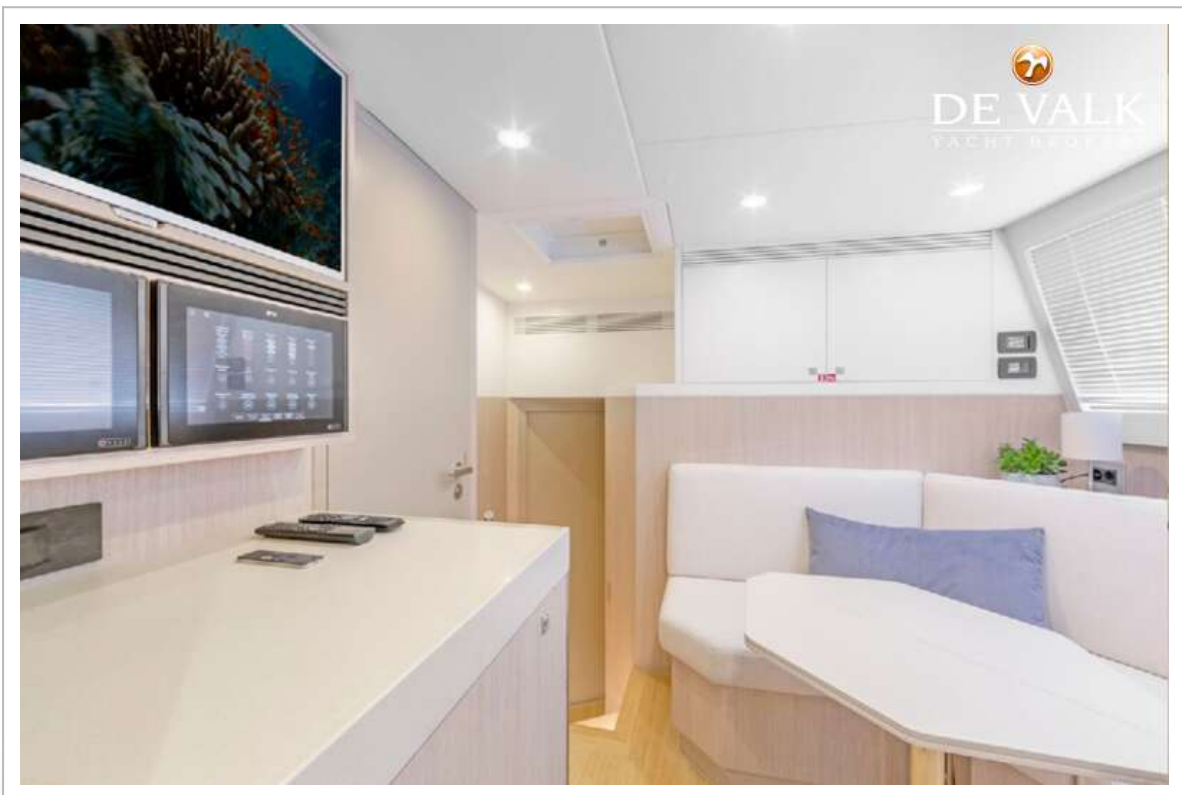
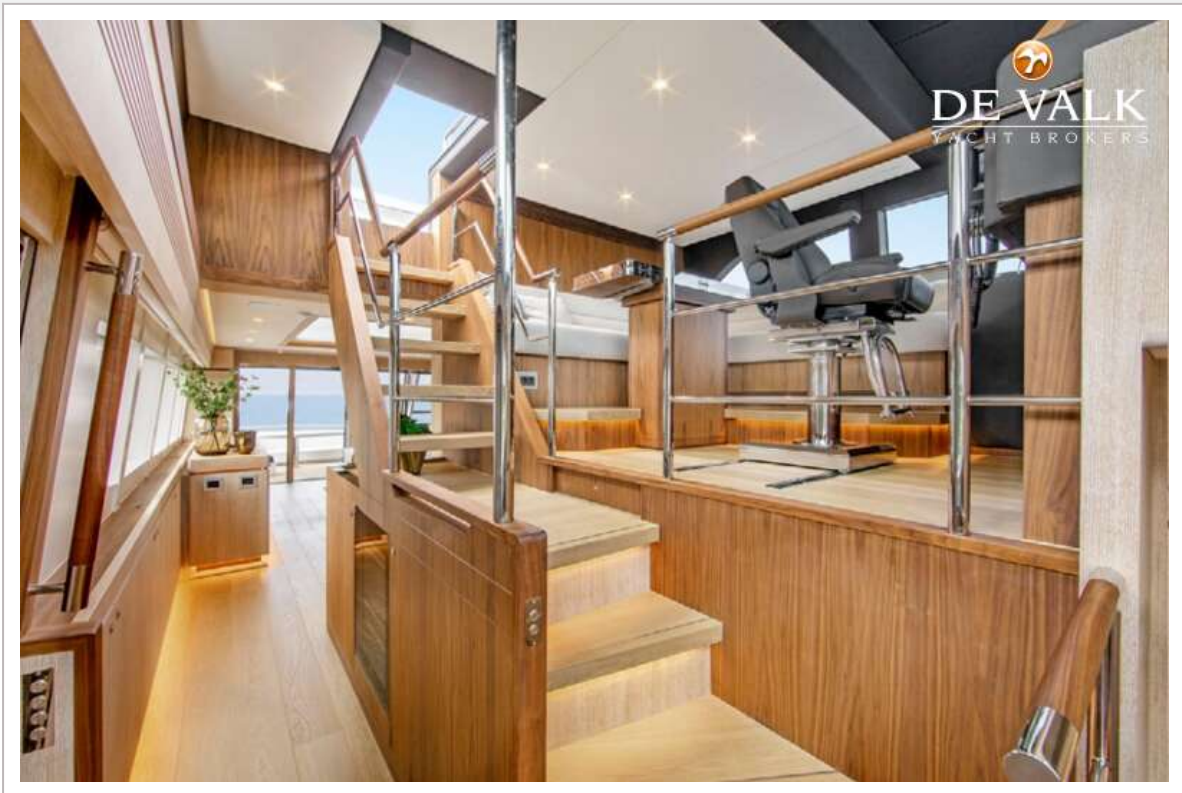
VAN DER VALK RAISED PILOTHOUSE 27M



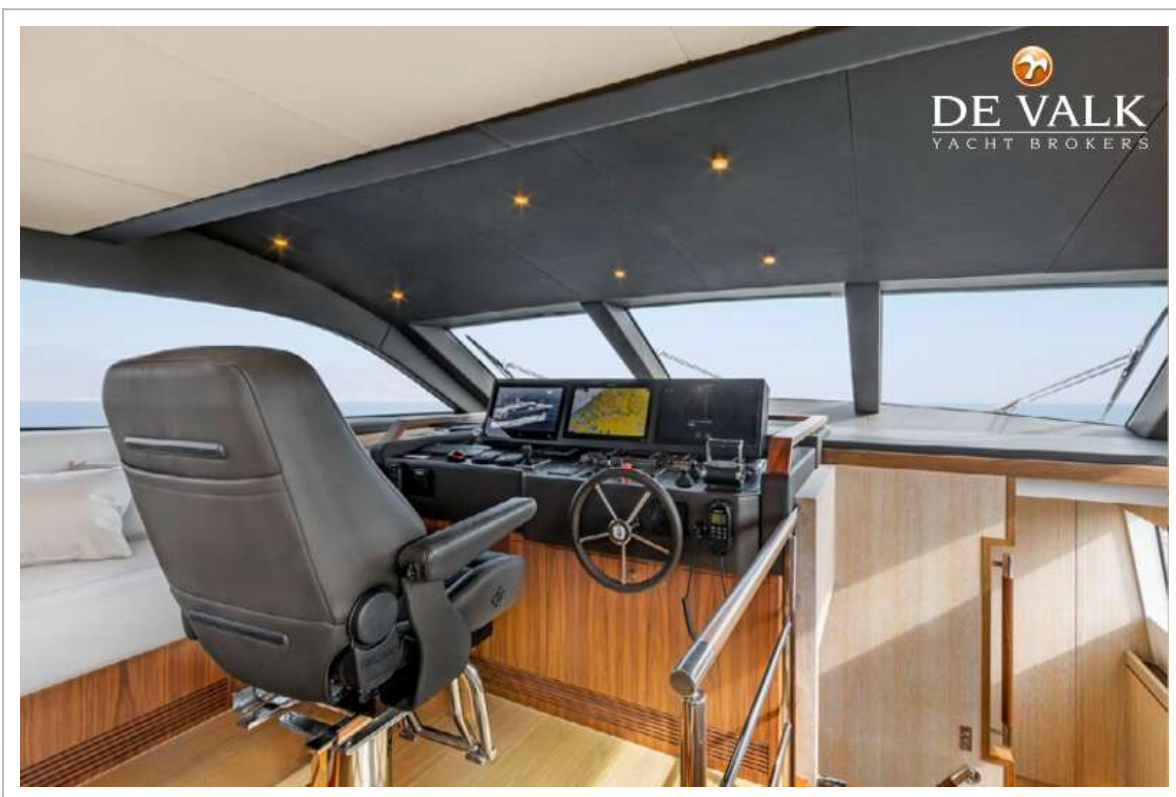
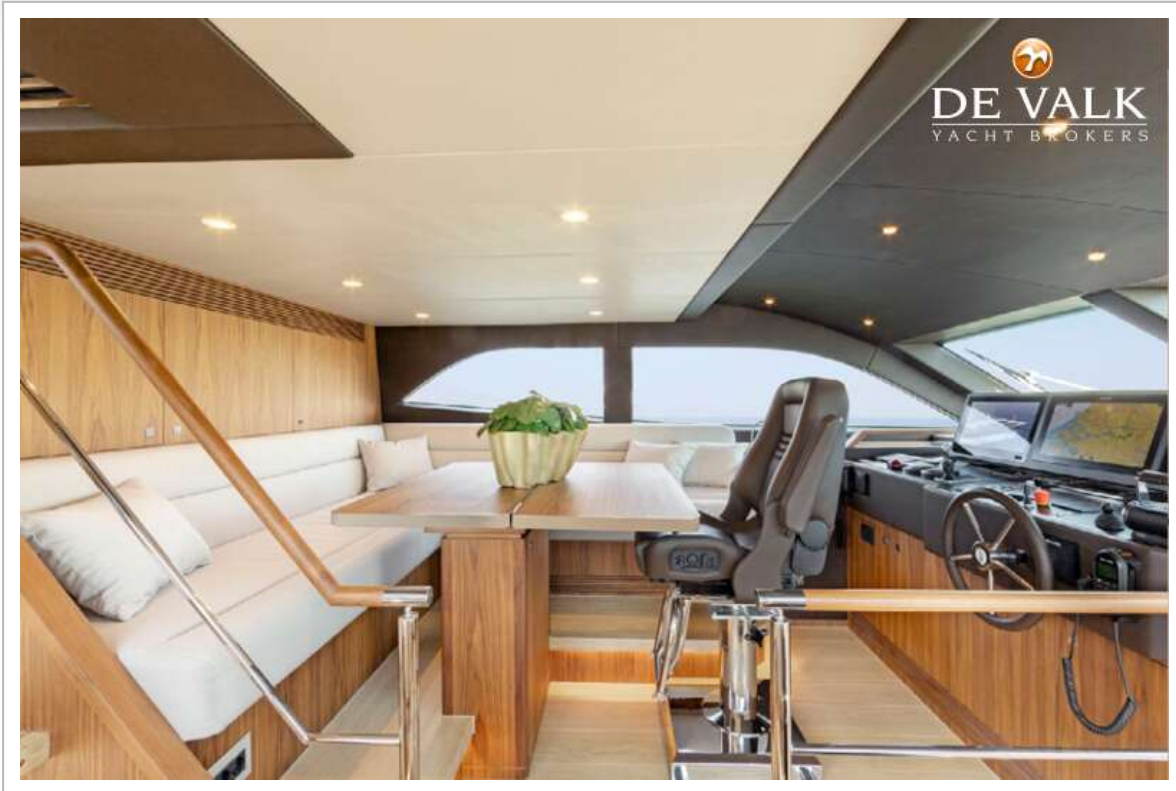
VAN DER VALK RAISED PILOTHOUSE 27M



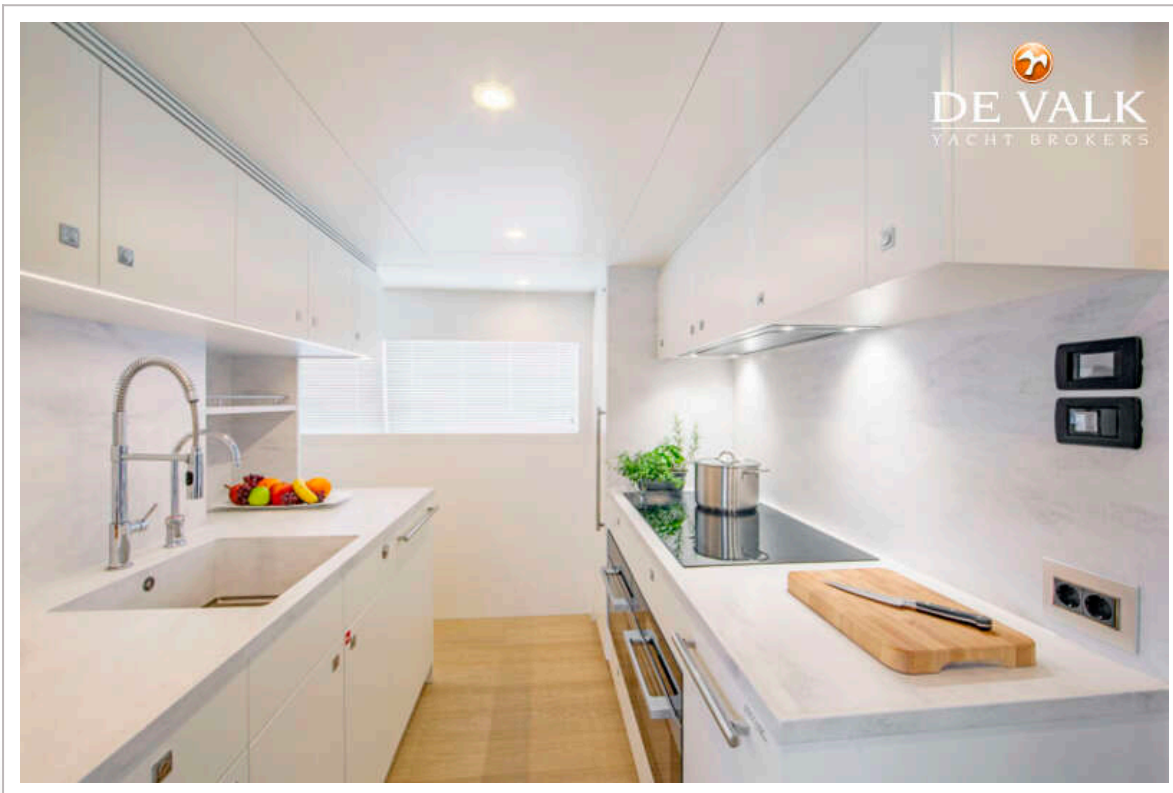
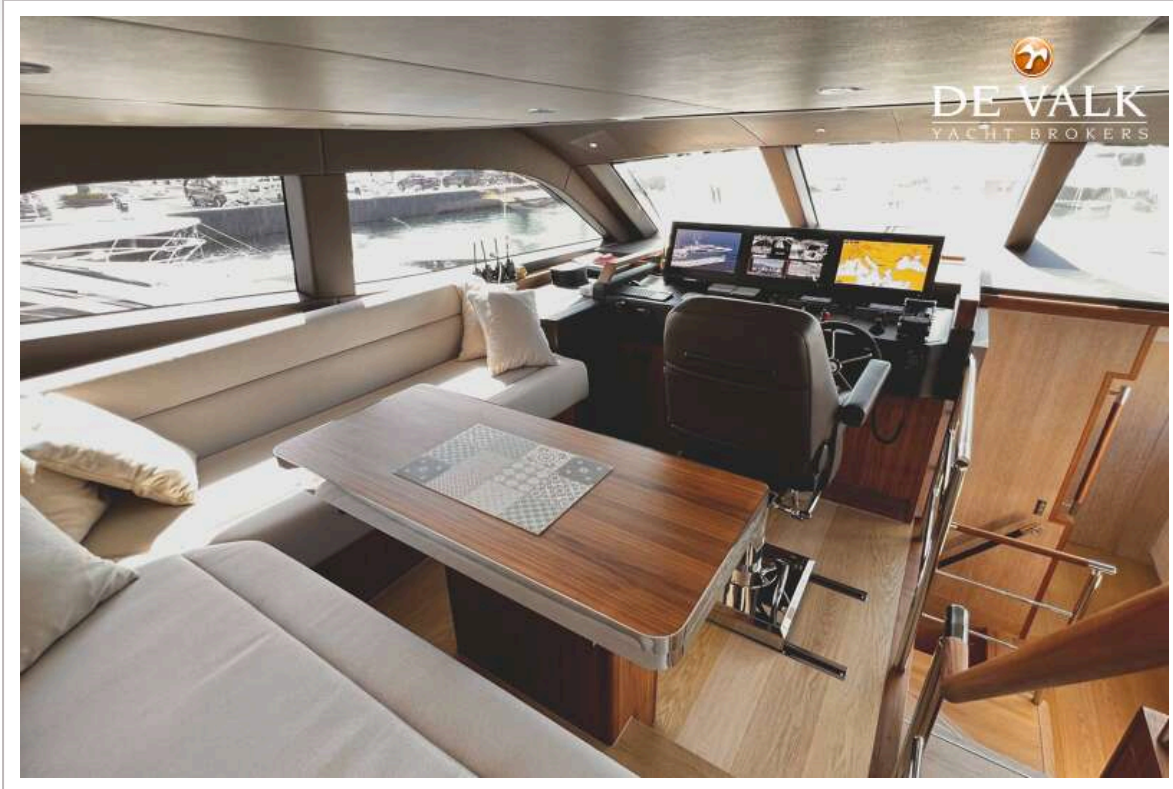
VAN DER VALK RAISED PILOTHOUSE 27M



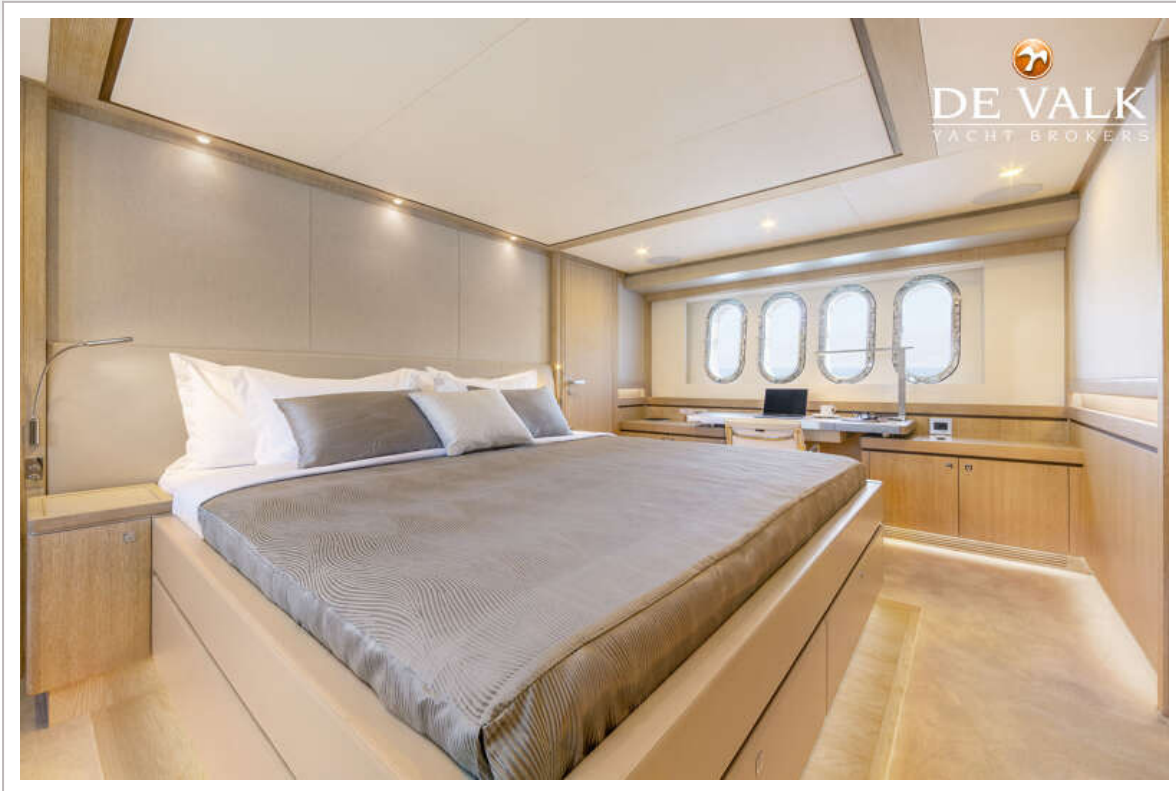
VAN DER VALK RAISED PILOTHOUSE 27M



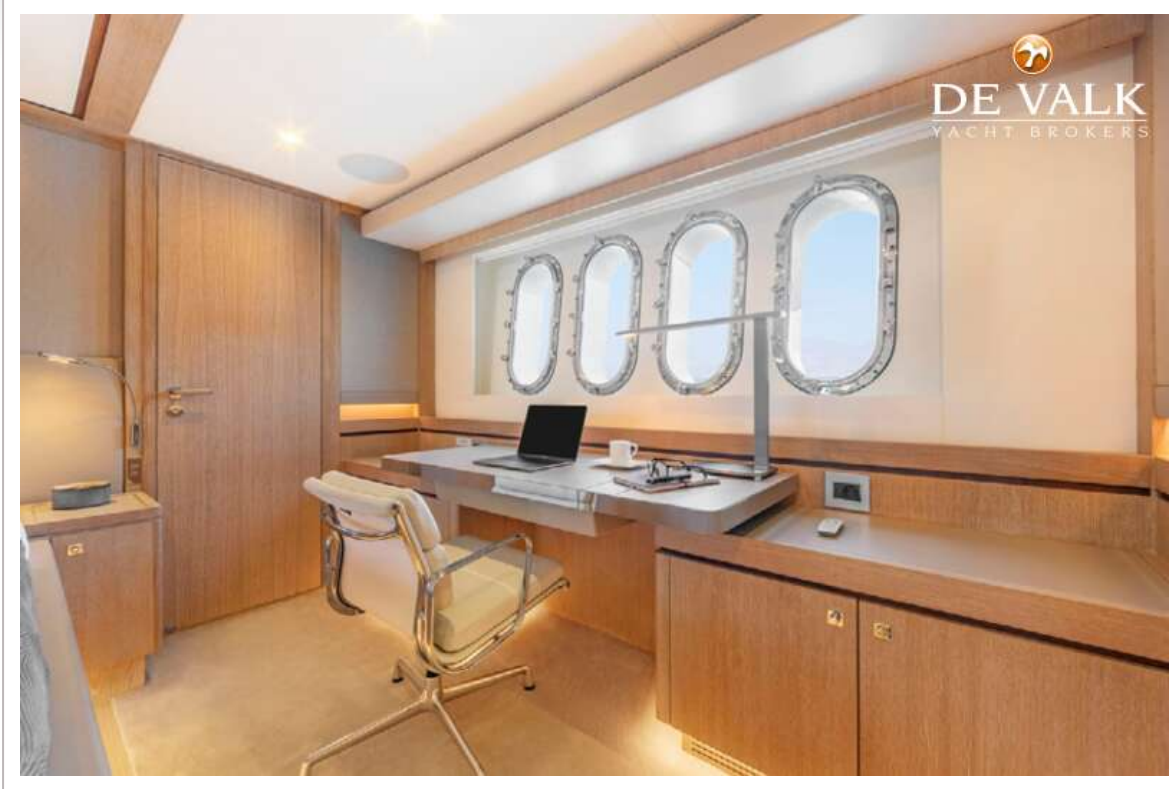
VAN DER VALK RAISED PILOTHOUSE 27M



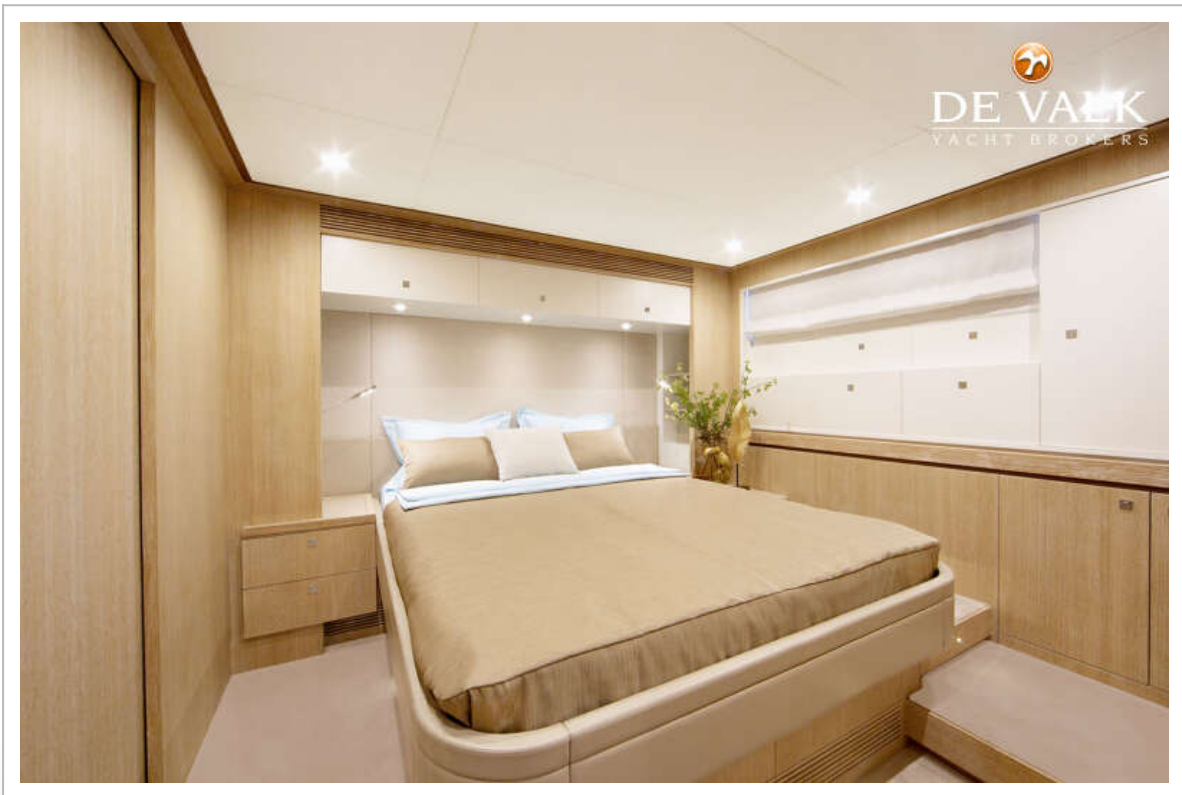
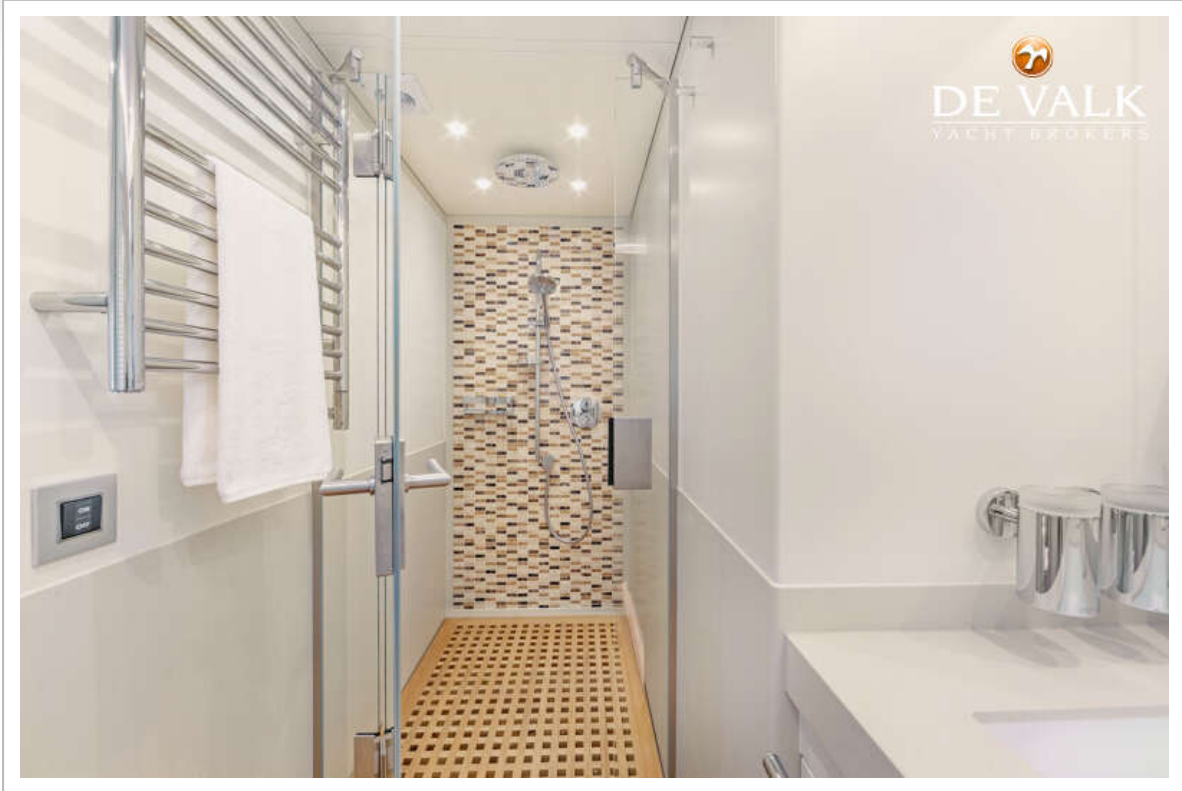
VAN DER VALK RAISED PILOTHOUSE 27M



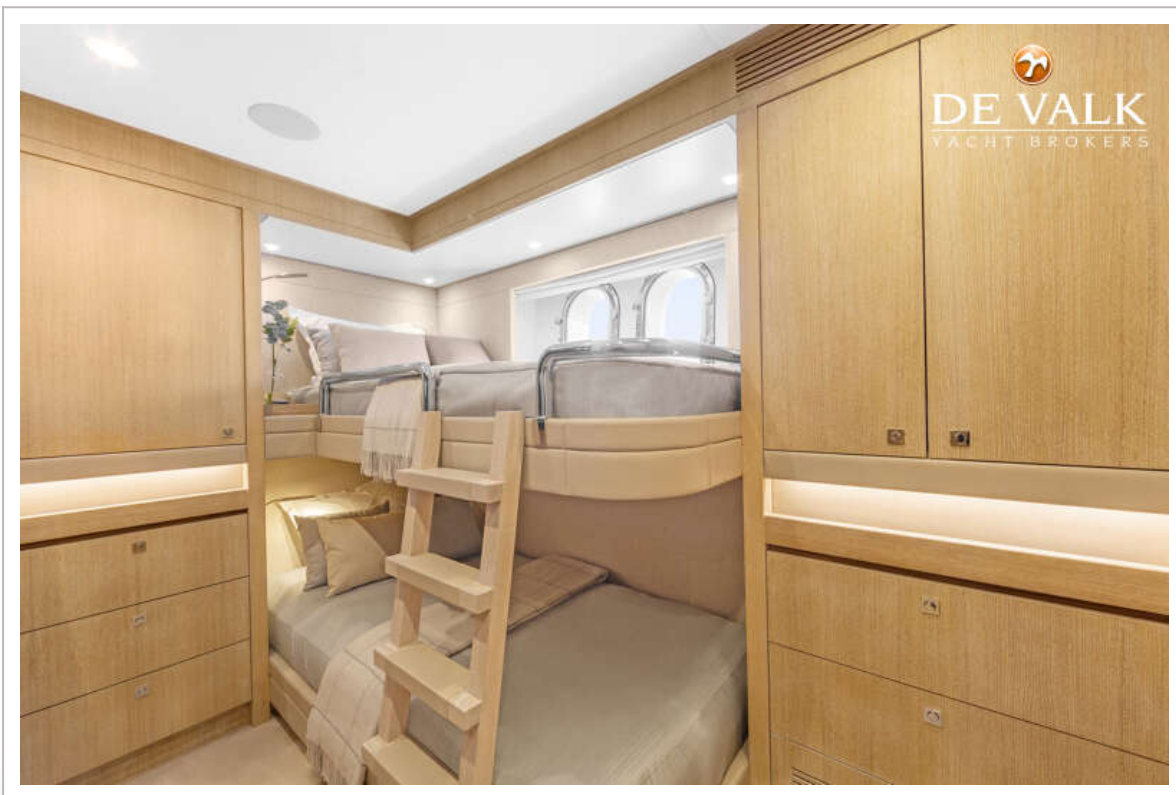
VAN DER VALK RAISED PILOTHOUSE 27M



VAN DER VALK RAISED PILOTHOUSE 27M



VAN DER VALK RAISED PILOTHOUSE 27M



VAN DER VALK RAISED PILOTHOUSE 27M

