



DE VALK
YACHT BROKERS



AUDAX 47



DE VALK
YACHT BROKERS

BROKER'S COMMENTS

Arctic passion, Caribbean or just a family daytrip? Just live your dream; this Audax 47 is designed for off grid destinations anywhere in the world. Look at the special ice breaking bow design. Check the easy access and workspace over deck. Inside a bright, cosy and perfect warm/cold climate isolated, spacious design(ed) interior. Workbench aft completes your independency. This super strong, impressively built vessel is highly recommended for the adventurous sailor, but can take the family out as well. If you look for the difference this must be your new yacht!

Willem Koopmans

SPECIFICATIONS

| | | | |
|---------------------|---------------------------|----------------|-------------------------|
| Dimensions | 15.47 x 4.80 x 2.40 (m) | Builder | Audax Yates Oceanicos |
| Built | 2012 | Cabins | 3 |
| Material | GRP | Berths | 6 |
| Engine(s) | 1 x Volvo Penta D3 diesel | Hp/Kw | 110.00 (hp), 80.96 (kw) |
| Asking price | € 298.000 (VAT Paid) | Lying | contact sales office |

CONTACT

| | | | |
|---------------------|---|------------------|-----------------------|
| Sales office | De Valk Costa Blanca | Telephone | +34 96 50 21 569 |
| Address | Costa Blanca Region 03730 Javea Alicante ES | E-mail | costablanca@devalk.nl |

DISCLAIMER

These particulars are given in good faith as supplied but cannot be guaranteed.



GENERAL

| | |
|-----------------------------------|---|
| Model | AUDAX 47 |
| Type | sailing yacht |
| LOA (m) | 15,47 |
| LWL (m) | 13,00 |
| Beam (m) | 4,80 |
| Draft (m) | 2,40 |
| Air draft (m) | 21,60 |
| Air draft min (m) | 19,68 |
| Headroom (m) | 2,20 |
| Year built | 2012 |
| Launched | 2012 |
| Builder | Audax Yates Oceanicos |
| Country | Spain |
| Designer | Joaquin Verdeguer Garcia |
| Displacement (t) | 17 |
| Ballast (tonnes) | 5 |
| Net tonnage | yes |
| CE norm | A |
| Hull material | GRP |
| Hull colour | off-white |
| Hull thickness (mm) | 2 watertight 25 mm bulkheads generating 3 separate compartments |
| Hull shape | round-bilged |
| Keel type | fin keel with bulb 2500 kg torpedo bulb |
| Superstructure material | composite Sandwich divinilcell |
| Deck plate thickness (mm) | 35 mm |
| Rubbing strake | wood |
| Deck material | composite |
| Deck finish | teak |
| Superstructure deck finish | non-skid moulded in |
| Cockpit deck finish | teak |



| | |
|-------------------------------------|---|
| Antifouling (year) | 2026 |
| Dorades | Stainless steel |
| Window material | polycarbonate Spare available |
| Deckhatch | yes |
| Insulation | Calculated for Antarctica conditions |
| Radar arch | Stainless steel |
| Fuel tank (litre) | 995 in total, 2x ss tank of 330 ltr, 1x polyethylene tank of 335 |
| Level indicator (fuel tank) | yes |
| Freshwater tank (litre) | polyethylene 1290, 6 tanks of 215 ltr each |
| Level indicator (freshwater) | yes |
| Blackwater tank (litre) | 2x 60 |
| Greywater tank (litre) | 40 |
| Wheel steering | cable steering Double rudders, blades at 14", one spare blade available |
| Inside helm position | Wheel |
| Outside helm position | cable steering Wheel |
| Emergency tiller | yes |
| More info on hull | Built for Arctic, for overwintering in ice condition |
| Extra info | Water tight bulkheads, vinylester epoxy built hull |
| Extra info | Hull made of core, a pvc material, vacuum laminated |

ACCOMMODATION

| | |
|----------------------------|--|
| Cabins | 3 |
| Berths | 6 |
| Interior | Design |
| Layout | Owners cab plus 1 guest cab in front, 1 guest in aft |
| Floor | vinyl Antislip |
| Open cockpit | yes |
| Pilot house | yes |
| Saloon | yes |
| Headroom saloon (m) | 2,20 |



| | |
|-------------------------|--------------------------------|
| Heating | central heating Eberspacher D5 |
| Heating 2 | central heating Eberspacher D4 |
| Aft Cabin | yes |
| Dinette | yes |
| Opening door to cockpit | yes |
| Galley | yes |
| Countertop | corian |
| Sink | GRP Plus soap dispenser |
| Cooker | calor gas 2 burner Eno |
| Oven | calor gas Eno |
| Extractor | yes |
| Gas alarm | Detector |
| Fridge | Plus 1 in storage room |
| Freezer | yes |
| Hot water system | 220V + engine Boiler, 40 ltr |
| Water pressure system | electrical |
| Manual and/or foot pump | N/a but easy to fit. |
| Owners cabin | yes |
| Bed length (m) | 2 x 3 |
| Wardrobe | hanging and shelves |
| Bathroom | shared |
| Toilet | shared |
| Toilet system | electric |
| Wash basin | in the bathroom |
| Shower | shared Very spacious |
| Guest cabin 1 | double bed |
| Bed length (m) | 1,95 |
| Wardrobe | hanging and shelves |
| Bathroom | shared |
| Toilet | shared |
| Toilet system | electric |
| Wash basin | in the bathroom |



| | |
|------------------------|--|
| Shower | shared Very spacious |
| Extra info | In use as dry room for clothes, with extra electrical heater |
| Guest cabin 2 | double bed Aft |
| Bed length (m) | 1,90 |
| Wardrobe | drawers and shelves |
| Bathroom | en suite |
| Toilet | en suite |
| Toilet system | manual |
| Wash basin | in the bathroom |
| Shower | en suite |
| Washing machine | 7 kg |
| Tender garage | Storage access from transom |

MACHINERY

| | |
|------------------------------|---------------------------|
| No of engines | 1 |
| Make | Volvo Penta |
| Type | D3 |
| HP | 110 |
| kW | 80.96 |
| Fuel | diesel |
| Year installed | 2012 |
| Maximum speed (kn) | 9.2 |
| Cruising speed (kn) | 7 |
| Consumption (l/hr) | 4 |
| Range (nm) | 1500 |
| Engine hours | 1100 |
| Engine cooling system | freshwater heat exchanger |
| Drive | shaft |
| Shaft seal | yes |
| Engine controls | bowden cable Double |
| Bowthruster | 25 cm, 25kg, 1250 N, 8 hp |



| | |
|---------------------------------|-----------------------------------|
| Exhaust | watercooled |
| Propeller type | folding |
| Propeller blades | 3 |
| Propeller shaft material | stainless steel |
| Manual bilge pump | yes |
| Electric bilge pump | 4x |
| Electrical installation | 12/228 |
| Generator | N/a, but installation is foreseen |
| Batteries | 6x AGM, new 2020 |
| Start battery | 2020 AGM 110Amp |
| Service battery | 2020 AGM 110Amp |
| Battery charger/inverter | Mastervolt MASS Combi 12/2000/100 |
| Solar panel | 3x 250 Watt 2x 100 Watt |
| Shorepower | with cable |

NAVIGATION

| | |
|------------------------------------|---|
| Compass | 2x (in- and outside) Plastimo Olympic I35 |
| Electric compass | On pilot |
| Multi control display | Raymarine I70 |
| Depth sounder | Raymarine I70 |
| Forw. looking depth sounder | Echopilot FLS Platinum colour sonar |
| Log | Raymarine I70 |
| Windset | Raymarine I70 |
| VHF | Raymarine 55E plus dual connection |
| VHF handheld | Standard Horizon HX290 |
| Autopilot | Raymarine P70 and X30 course computer |
| Rudder angle indicator | On pilot display |
| Radar | Raymarine RD18HD |
| GPS | Raystar 125 |
| Radar/GPS/plotter | 2x Raymarine CX95, inside and outside |
| AIS transponder | Raymarine AIS 650 |



| | |
|---------------------------------|---|
| EPIRB | yes |
| Personal MOB transmitter | 2x personal AIS |
| Camera | Engine room and bilges, new display on board (to be installed) |
| Navigation lights | yes |
| Searchlight | 150 Watt |
| Extra info | Raymarine I70 remote control pilot |
| Extra info | 4x personal AIS and GPS fast find units on rack |

EQUIPMENT

| | |
|-------------------------|---|
| Cockpit cover | Winter tent for whole yacht |
| Bimini | With built-in water collector, directly connected to tank |
| Winter cover | yes |
| Cockpit cushions | yes |
| Cockpit table | Foldable |
| Bathing platform | yes |
| Boarding ladder | stainless steel |
| Transom door | yes |
| Bow ladder | Sideladder |
| Gangway | Foldable, 4 m |
| Deck shower | yes |
| Anchor | Rocna 40 kgs, with 12/13 chain |
| Anchor chain | 75 m, plus 30 m extra rope |
| Anchor 2 | Delta 32 kgs |
| Chain counter | yes |
| Windlass | Lofrans 503 |
| Dinghy | Quicksilver Sport, 4 mtr |
| Outboard | Suzuki 6 hp, 4 stroke |
| Outboard support | yes |
| Davits | stainless steel |
| Davits controls | manual |
| Sea railing | wire Stainless steel |



| | |
|----------------------------|--|
| Railing side opening gates | yes |
| Life raft | Solas |
| Life raft (pers) | 6 |
| Last life raft survey | Needs data check |
| Lifejackets | 6 |
| Fenders | yes |
| Mooring lines | yes |
| Spare parts | yes |
| Tools | yes |
| TV | Samsung 21" |
| Radio-cd player | yes |
| Clock - barometer | yes |
| Fire extinguisher | 3x, 1x cabin, 1x workshop, 1x salon close to engine room |
| Latest extinguisher survey | Valid until 01/01/2031 |
| Extra info | Hi-Voltage Surge Protective Device Anti lighting system Joslyn |
| Extra info | Dive compressor |

RIGGING

| | |
|-------------------------|---|
| Rigging | cutter |
| Standing rigging | Rod |
| Brand mast | Facnor |
| Material mast | aluminium 20 mtr of one piece constructed |
| Spreaders | 2x 25" backwards |
| Mainsail cover | Lazy bag |
| Battcars | yes |
| Fully battened mainsail | Dacron 10 horizontal cut, 60m ² , new 2026 |
| Cutterstay | yes |
| Jib | Triradial Dracon 11/8 ounce 68 m2 |
| Genoa | Triradial Dracon 11 ounce 35 m2 |
| Genoa furler | Facnor flat deck furler x 2! |
| Staysail | yes |



| | |
|--------------------------------------|---------------------------------|
| Removable innerforestay | yes |
| Self tacking jib installation | yes |
| Reefing System | quick-one-line-reefing |
| Backstay adjuster | yes |
| Boomvang | gasspring Facnor |
| Primary sheet winch | Andersen 4x ST 46, 1x electric |
| Secondary sheet winch | Andersen 2x ST 46 |
| Genoa sheetwinches | Anderson 2x ST 58 |
| Reefing winch | Andersen 1 x 46 ST |
| Multifunctional winches | Andersen 2x 42 ST for traveller |









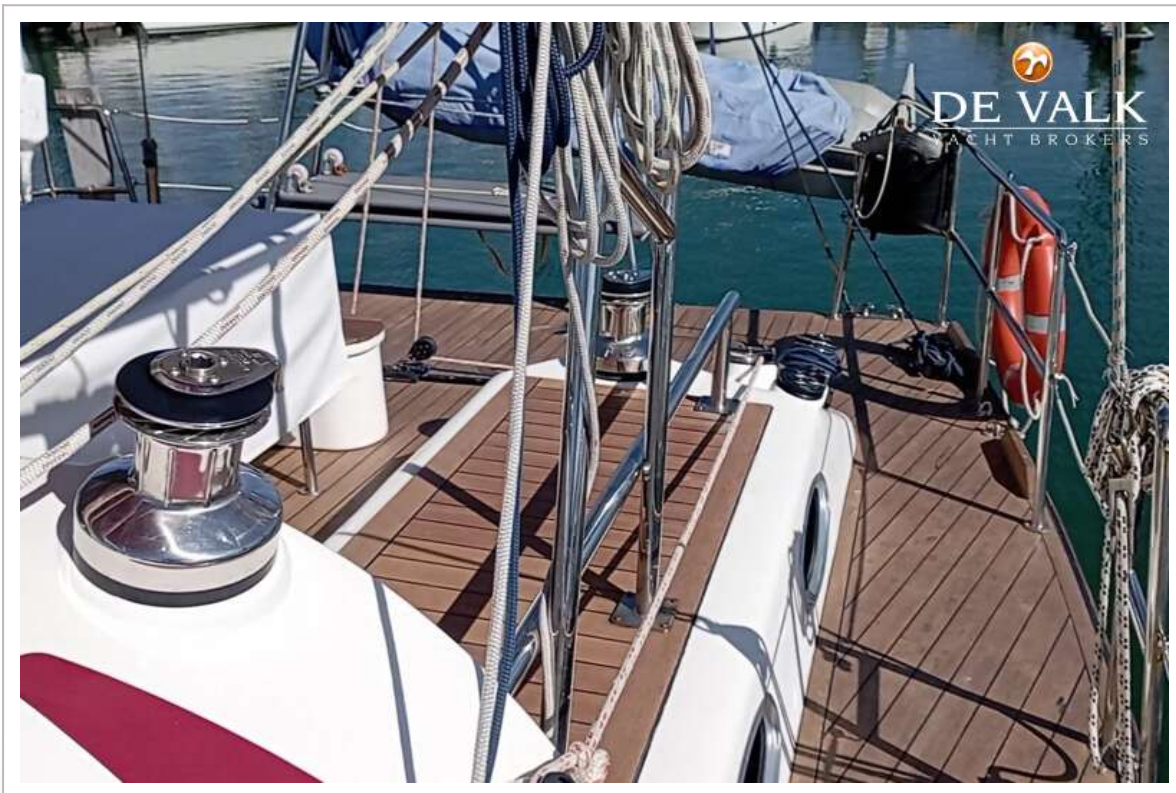
AUDAX 47



AUDAX 47







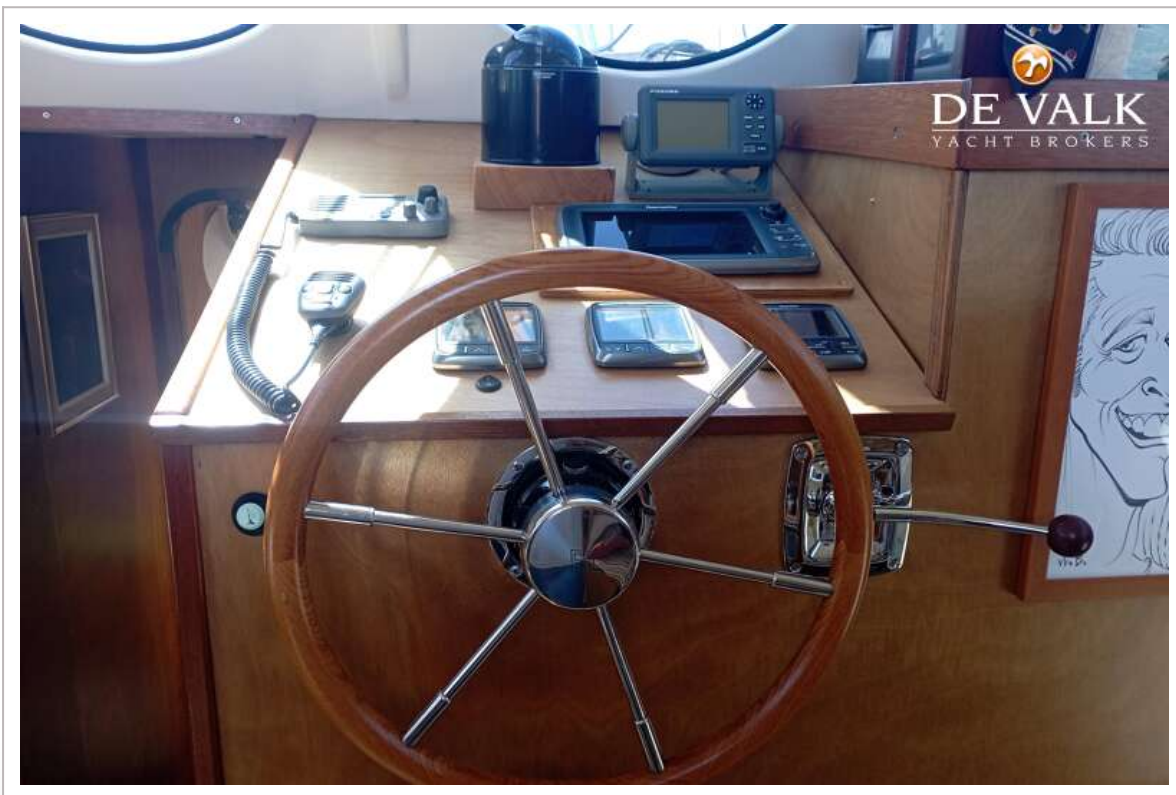
AUDAX 47

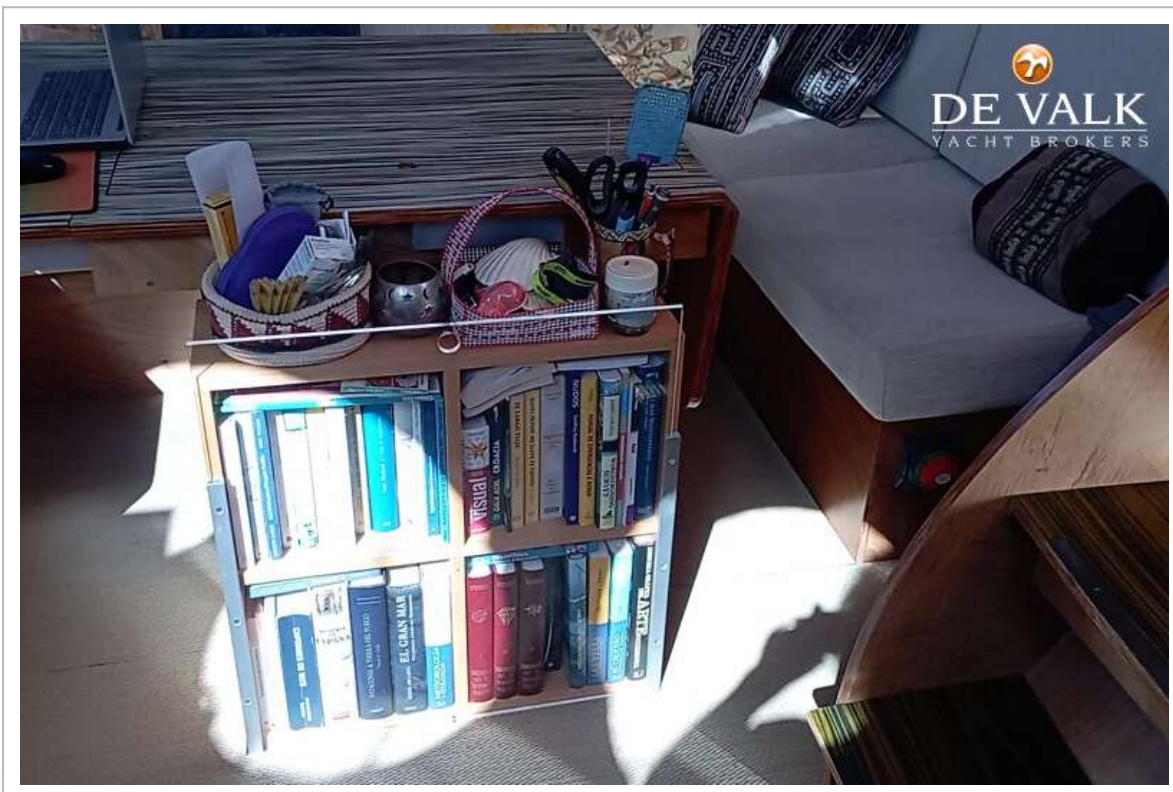
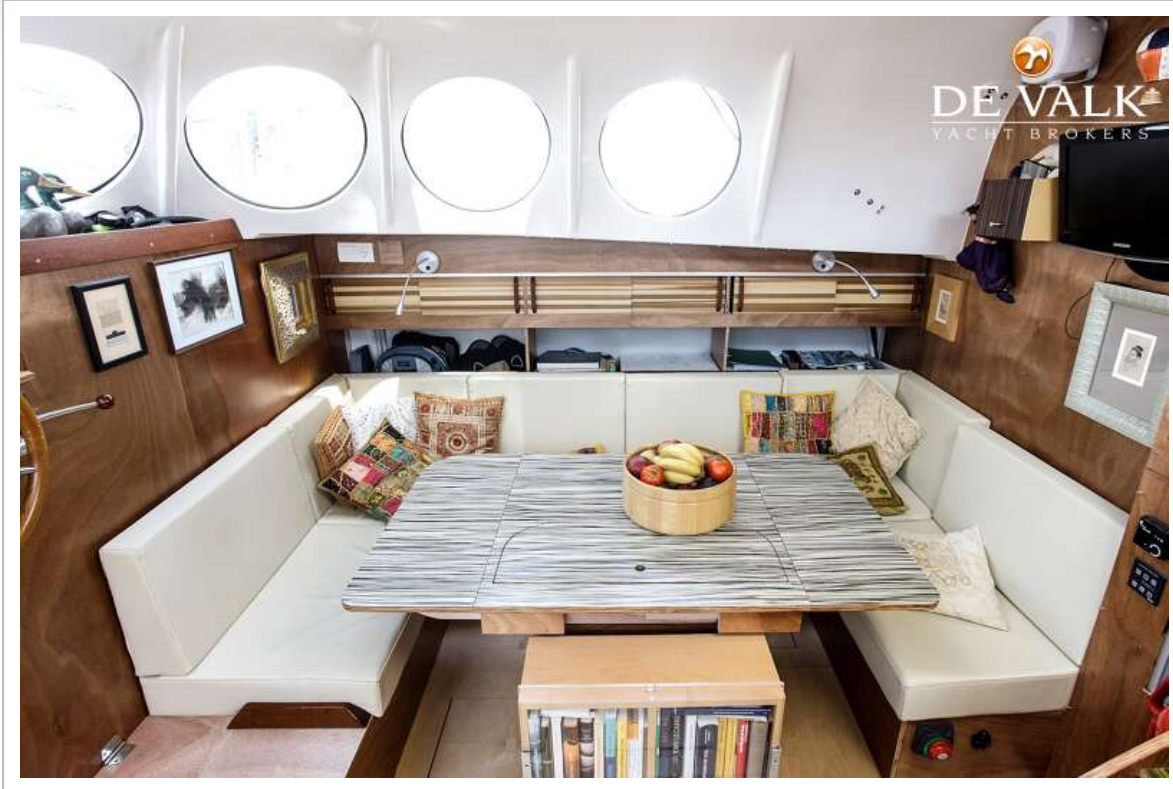


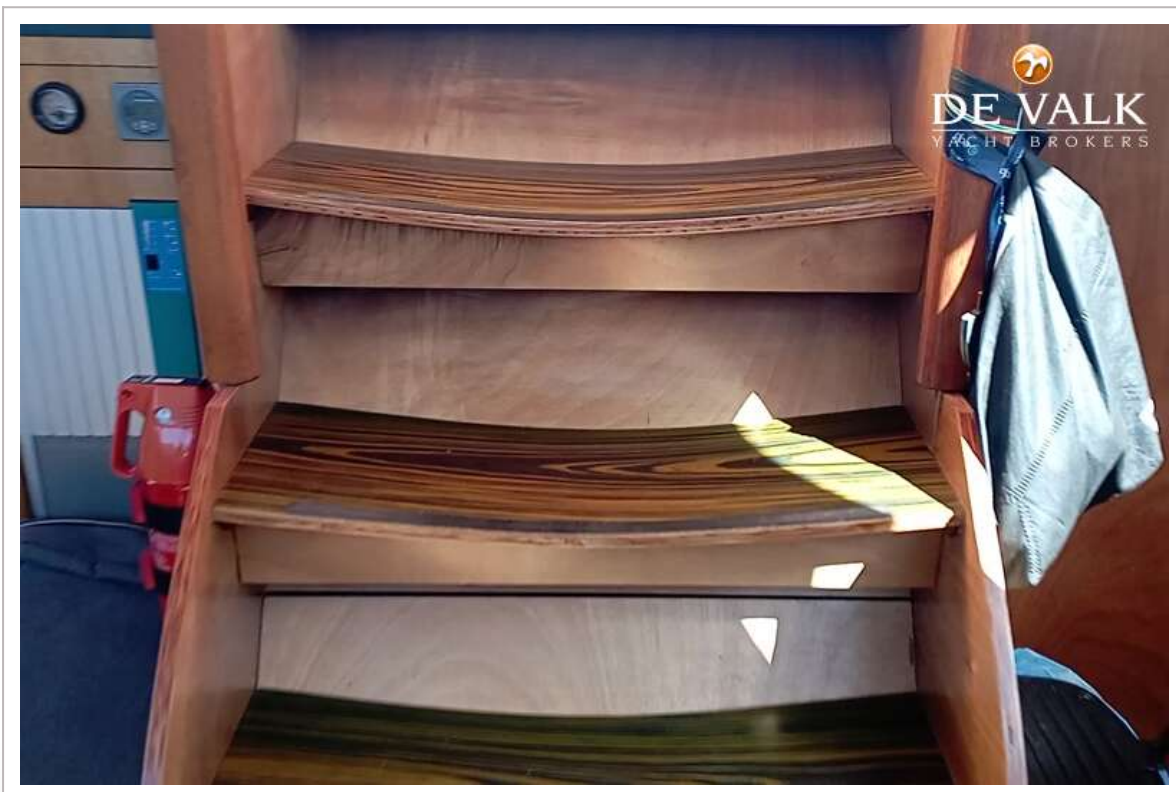
AUDAX 47

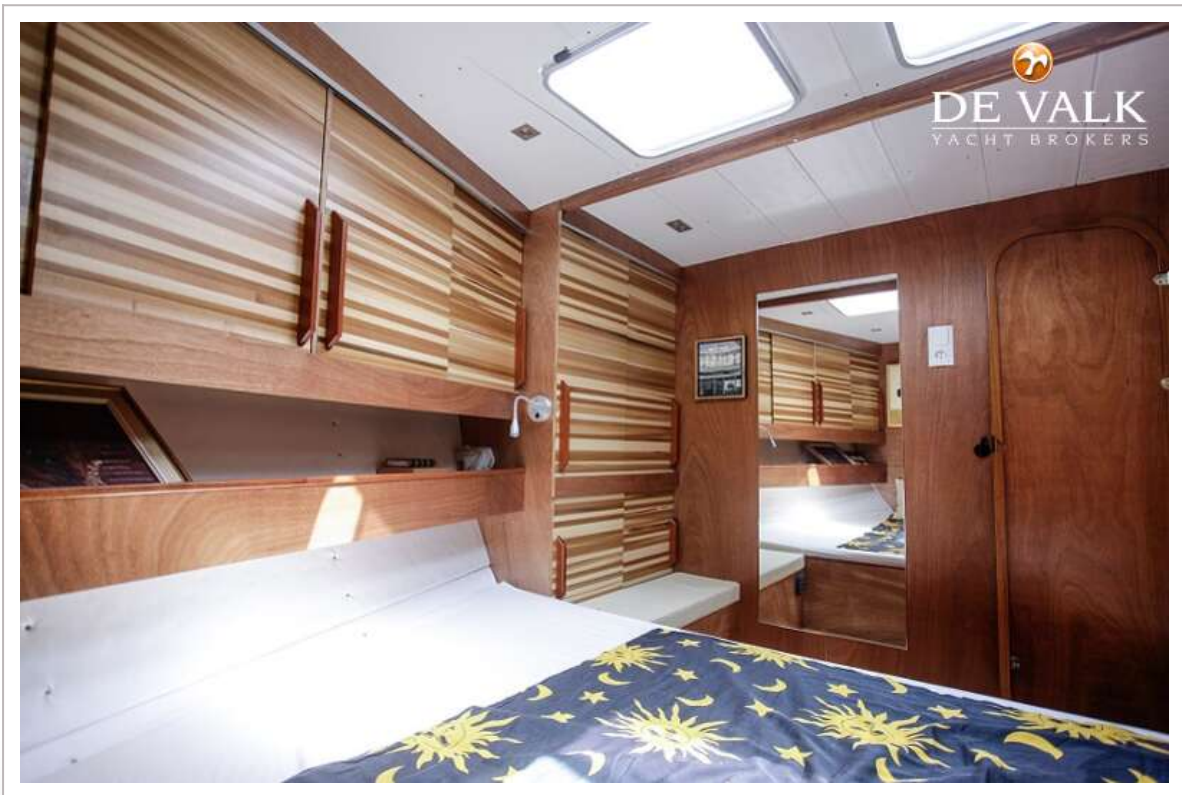


AUDAX 47



















AUDAX 47

