



## CUSTOM BUILT AUDAX 47

# CUSTOM BUILT AUDAX 47

## BROKER'S COMMENTS

Arctic passion, Caribbean or just a daytrip? Just live your dream; Audax is mainly designed for off grid destinations anywhere in the world. Look at the special bow design to break ice. Check the easy access and workspace over deck. Inside a bright, cosy and perfect warm/cold climate isolated, spacious design(ed) interior. Workbench aft completes your independency. This super strong, impressively built vessel is highly recommended for the adventurous sailor, but can take the family out as well. If you look for the difference ..... this might be your new yacht!

*Willem Koopmans*

## SPECIFICATIONS

<b>Dimensions</b>	15.47 x 4.80 x 2.40 (m)	<b>Builder</b>	Audax Yates Oceanicos
<b>Built</b>	2012	<b>Cabins</b>	3
<b>Material</b>	GRP	<b>Berths</b>	6
<b>Engine(s)</b>	1 x Volvo Penta D3 diesel	<b>Hp/Kw</b>	110.00 (hp), 80.96 (kw)
<b>Asking price</b>	€ 298.000 (VAT Paid)	<b>Lying</b>	contact sales office

## CONTACT

<b>Sales office</b>	De Valk Costa Blanca	<b>Telephone</b>	+34 96 50 21 569
<b>Address</b>	Costa Blanca Region 03730 Javea Alicante ES	<b>E-mail</b>	costablanca@devalk.nl

## DISCLAIMER

These particulars are given in good faith as supplied but cannot be guaranteed.



# CUSTOM BUILT AUDAX 47

## GENERAL

Model	CUSTOM BUILT AUDAX 47
Type	sailing yacht
LOA (m)	15,47
LWL (m)	13,00
Beam (m)	4,80
Draft (m)	2,40
Air draft (m)	21,60
Air draft min (m)	19,68
Headroom (m)	2,20
Year built	2012
Launched	2012
Builder	Audax Yates Oceanicos
Country	Spain
Designer	Joaquin Verdeguer Garcia
Displacement (t)	17
Ballast (tonnes)	5
Net tonnage	23
CE norm	A
Hull material	GRP
Hull colour	off-white
Hull thickness (mm)	2 watertight 25 mm bulkheads generating 3 separate compartments
Hull shape	round-bilged
Keel type	fin keel with bulb , 2500 kg torpedo bulb
Superstructure material	composite , sandwich divinilcell
Deck plate thickness (mm)	35 mm
Rubbing strake	wood
Deck material	composite
Deck finish	teak
Cockpit deck finish	teak
Antifouling (year)	2023



# CUSTOM BUILT AUDAX 47

Dorades	Stainless steel
Window material	polycarbonate
Deckhatch	yes
Insulation	Calculated for Antarctica conditions
Radar arch	Stainless steel
Fuel tank (litre)	995 in total, 2x ss tank of 330 ltr, 1x polyethylene tank of 335
Level indicator (fuel tank)	yes
Freshwater tank (litre)	polyethylene 1290, 6 tanks of 215 ltr each
Level indicator (freshwater)	yes
Blackwater tank (litre)	2x 60
Greywater tank (litre)	40
Wheel steering	Double rudders, blades at 14"
Inside helm position	Wheel
Outside helm position	yes
Emergency tiller	yes
More info on hull	Built for Arctic, for overwintering in ice condition
Extra info	Water tight bulkheads, vinylester epoxy built hull
Extra info	Hull made of core, a pvc material, vacuum laminated

## ACCOMMODATION

Cabins	3
Berths	6
Interior	Design
Layout	Owners cab plus 1 guest cab in front, 1 guest in aft
Floor	vinyl Antislip
Open cockpit	yes
Pilot house	yes
Saloon	yes
Headroom saloon (m)	2,20
Heating	central heating Eberspacher D5
Heating 2	central heating Eberspacher D4



# CUSTOM BUILT AUDAX 47

Aft Cabin	yes
Dinette	yes
Opening door to cockpit	yes
Galley	yes
Countertop	corian
Sink	GRP Plus soap dispenser
Cooker	calor gas 2 burner
Oven	calor gas
Extractor	yes
Gas alarm	Detector
Fridge	Plus 1 in storage room
Freezer	yes
Hot water system	220V + engine Boiler, 40 ltr
Water pressure system	electrical
Owners cabin	yes
Bed length (m)	2 x 3
Wardrobe	hanging and shelves
Bathroom	shared
Toilet	shared
Toilet system	electric
Wash basin	in the bathroom
Shower	shared , very spacious
Guest cabin 1	double bed
Bed length (m)	2
Wardrobe	hanging and shelves
Bathroom	shared
Toilet	shared
Toilet system	electric
Wash basin	in the bathroom
Shower	shared , very spacious
Extra info	In use as dry room for clothes, with extra electrical heater
Guest cabin 2	double bed Aft



Bed length (m)	2
Wardrobe	drawers and shelves
Bathroom	en suite
Toilet	en suite
Toilet system	manual
Wash basin	in the bathroom
Shower	en suite
Washing machine	7 kg
Tender garage	Storage access from transom

## MACHINERY

No of engines	1
Make	Volvo Penta
Type	D3
HP	110
kW	80.96
Fuel	diesel
Year installed	2012
Maximum speed (kn)	9.2
Cruising speed (kn)	7
Consumption (l/hr)	4
Range (nm)	1500
Engine hours	1000
Engine cooling system	freshwater heat exchanger
Drive	shaft
Shaft seal	yes
Engine controls	bowden cable , double
Bowthruster	25 cm, 25kg, 1250 N, 8 hp
Exhaust	watercooled
Propeller type	folding
Propeller blades	3



Electric bilge pump	4x
Electrical installation	12/228
Generator	N/a, but installation is foreseen
Batteries	6x AGM, new 2020
Start battery	2020 AGM 110Amp
Service battery	2020 AGM 110Amp
Battery charger/inverter	Mastervolt MASS Combi 12/2000/100
Solar panel	3x 250 Watt 2x 100 Watt
Shorepower	with cable

## NAVIGATION

Compass	2x (in- and outside) Plastimo Olympic I35
Electric compass	On pilot
Multi control display	Raymarine I70
Depth sounder	Raymarine I70
Forw. looking depth sounder	Echopilot FLS Platinum colour sonar
Log	Raymarine I70
Windset	Raymarine I70
VHF	Raymarine 55E plus dual connection
VHF handheld	Standard Horizon HX290
Autopilot	Raymarine P70 and X30 course computer
Rudder angle indicator	On pilot display
Radar	Raymarine RD18HD
GPS	Raystar 125
Radar/GPS/plotter	2x Raymarine CX95, inside and outside
AIS transponder	Raymarine AIS 650
EPIRB	yes
Personal MOB transmitter	2x personal AIS
Camera	Engine room and bilges
Navigation lights	yes
Searchlight	150 Watt



Extra info

Raymarine I70 remote control pilot

Extra info

4x personal AIS and GPS fast find units on rack

## EQUIPMENT

Cockpit cover

Winter tent for whole yacht

Bimini

With built-in water collector, directly connected to tank

Winter cover

yes

Cockpit cushions

yes

Cockpit table

Foldable

Bathing platform

yes

Boarding ladder

stainless steel

Transom door

yes

Bow ladder

Sideladder

Gangway

Foldable, 4 m

Deck shower

yes

Anchor

Rocna 40 kgs

Anchor chain

75 m, plus 30 m extra rope

Chain counter

yes

Windlass

Lofrans 503

Dinghy

Quicksilver Sport, 4 mtr

Outboard

Suzuki 6 hp, 4 stroke

Outboard support

yes

Davits

stainless steel

Davits controls

manual

Sea railing

wire , stainless steel

Railing side opening gates

yes

Life raft

Solas

Life raft (pers)

6

Last life raft survey

Needs data check

Lifejackets

6

Fenders

yes





Mooring lines	yes
Spare parts	yes
Tools	yes
TV	Samsung 21"
Radio-cd player	yes
Clock - barometer	yes
Fire extinguisher	3x, 1x cabin, 1x workshop, 1x salon close to engine room
Latest extinguisher survey	Valid until 01/01/2031
Extra info	Hi-Voltage Surge Protective Device Anti lighting system Joslyn
Extra info	Dive compressor

## RIGGING

Rigging	cutter
Standing rigging	wire 10 mm
Brand mast	Facnor
Material mast	aluminium 20 mtr of one piece constructed
Spreaders	2x 25" backwards
Mainsail	Triple reef system
Mainsail cover	Lazy bag
Battcars	yes
Fully battened mainsail	Triradial Dracon 11 ounce 70 m2
Cutterstay	yes
Jib	Triradial Dracon 11/8 ounce 68 m2
Genoa	Triradial Dracon 11 ounce 35 m2
Staysail	yes
Removable innerforestay	yes
Self tacking jib installation	yes
Reefing System	quick-one-line-reefing
Backstay adjuster	yes
Boomvang	gasspring Facnor
Primary sheet winch	Andersen 2x 46 ST, 1x electric



**Secondary sheet winch**

Andersen 2x 46 ST

**Genoa sheetwinches**

Anderson 2x 58 ST

**Reefing winch**

Andersen 1 x 46 ST

**Multifunctional winches**

Andersen 2x 42 ST for traveller



# CUSTOM BUILT AUDAX 47



## CUSTOM BUILT AUDAX 47





## CUSTOM BUILT AUDAX 47



## CUSTOM BUILT AUDAX 47





## CUSTOM BUILT AUDAX 47



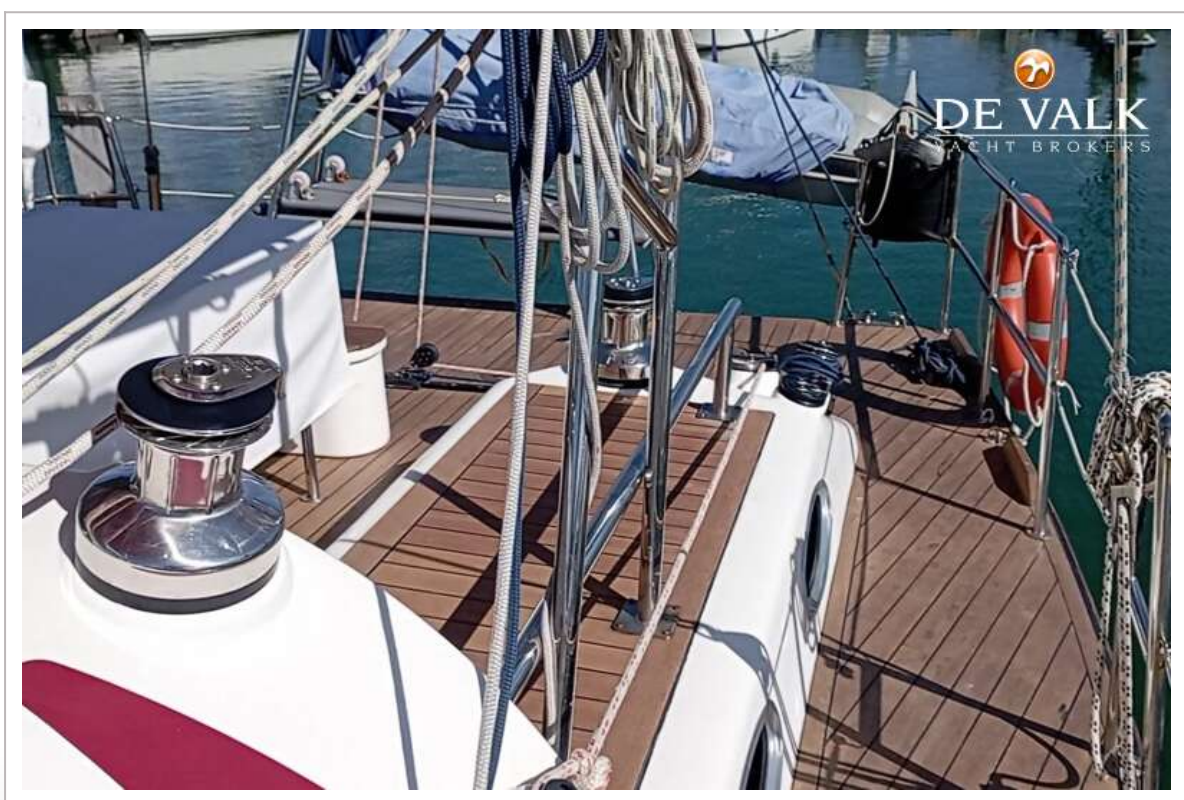


# CUSTOM BUILT AUDAX 47





## CUSTOM BUILT AUDAX 47





## CUSTOM BUILT AUDAX 47



## CUSTOM BUILT AUDAX 47

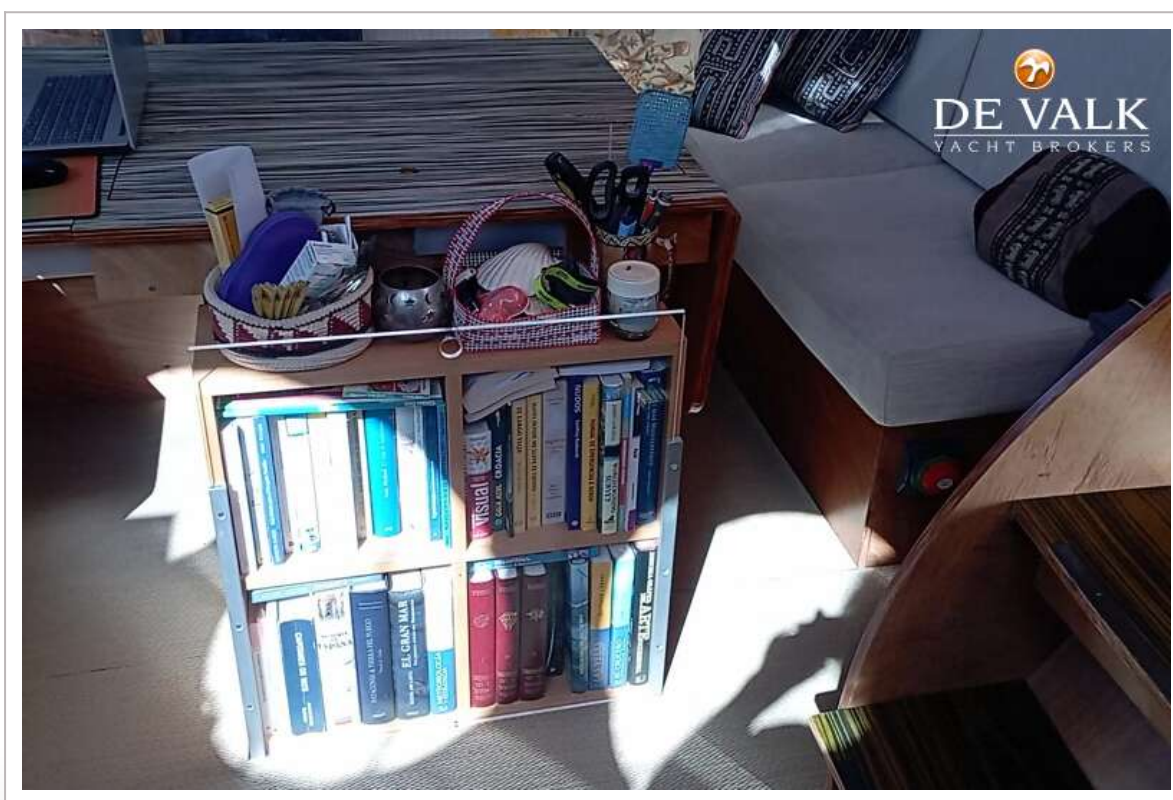
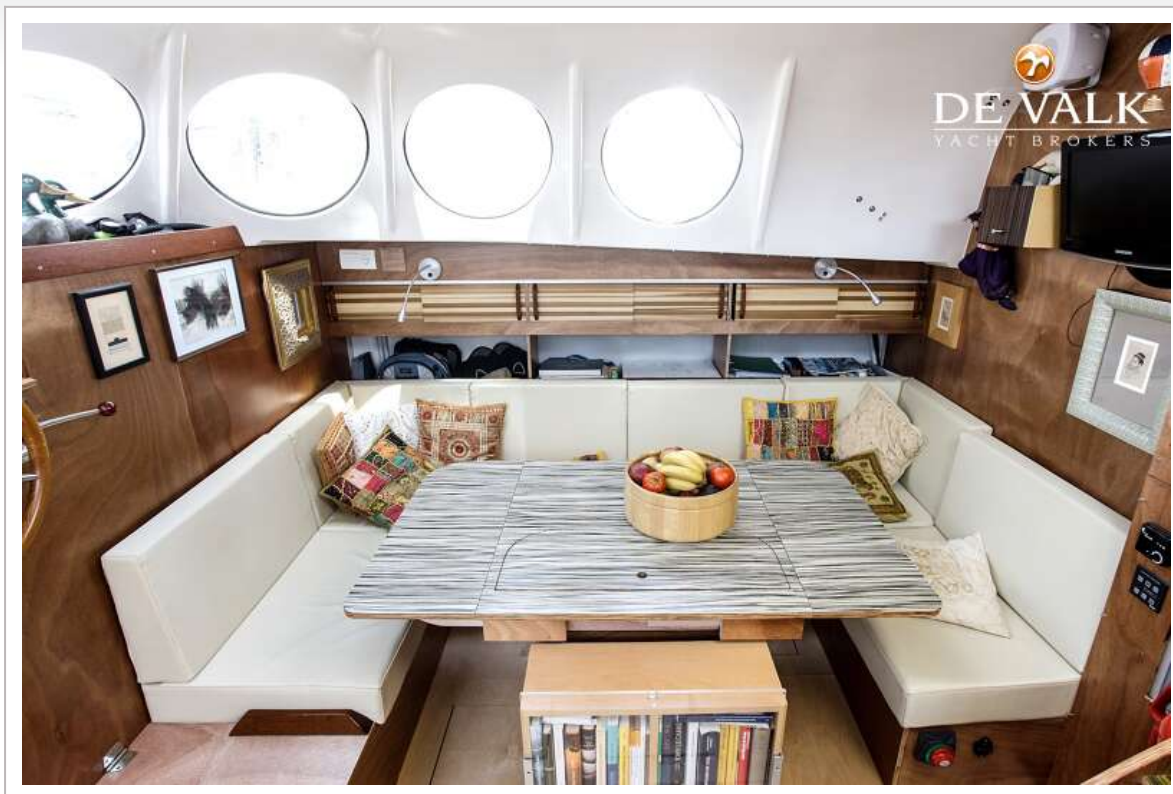




## CUSTOM BUILT AUDAX 47



CUSTOM BUILT AUDAX 47

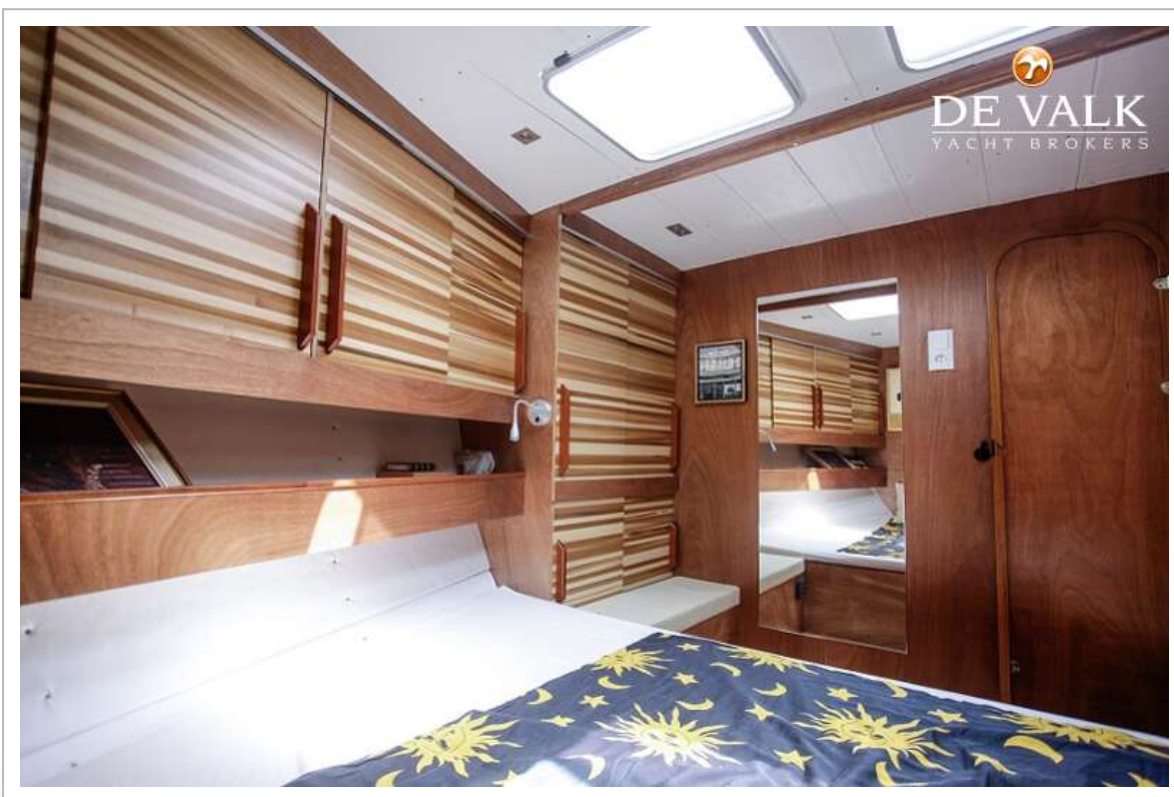
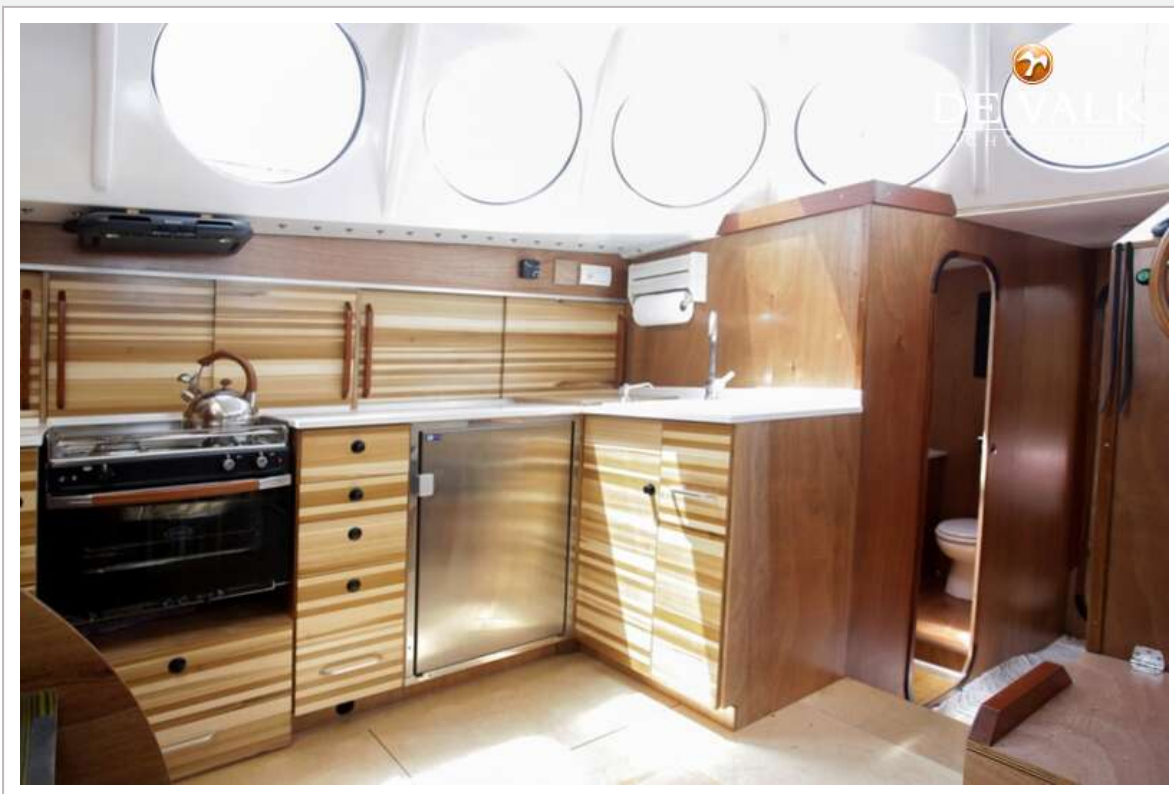




## CUSTOM BUILT AUDAX 47



## CUSTOM BUILT AUDAX 47





## CUSTOM BUILT AUDAX 47





## CUSTOM BUILT AUDAX 47



## CUSTOM BUILT AUDAX 47



## CUSTOM BUILT AUDAX 47

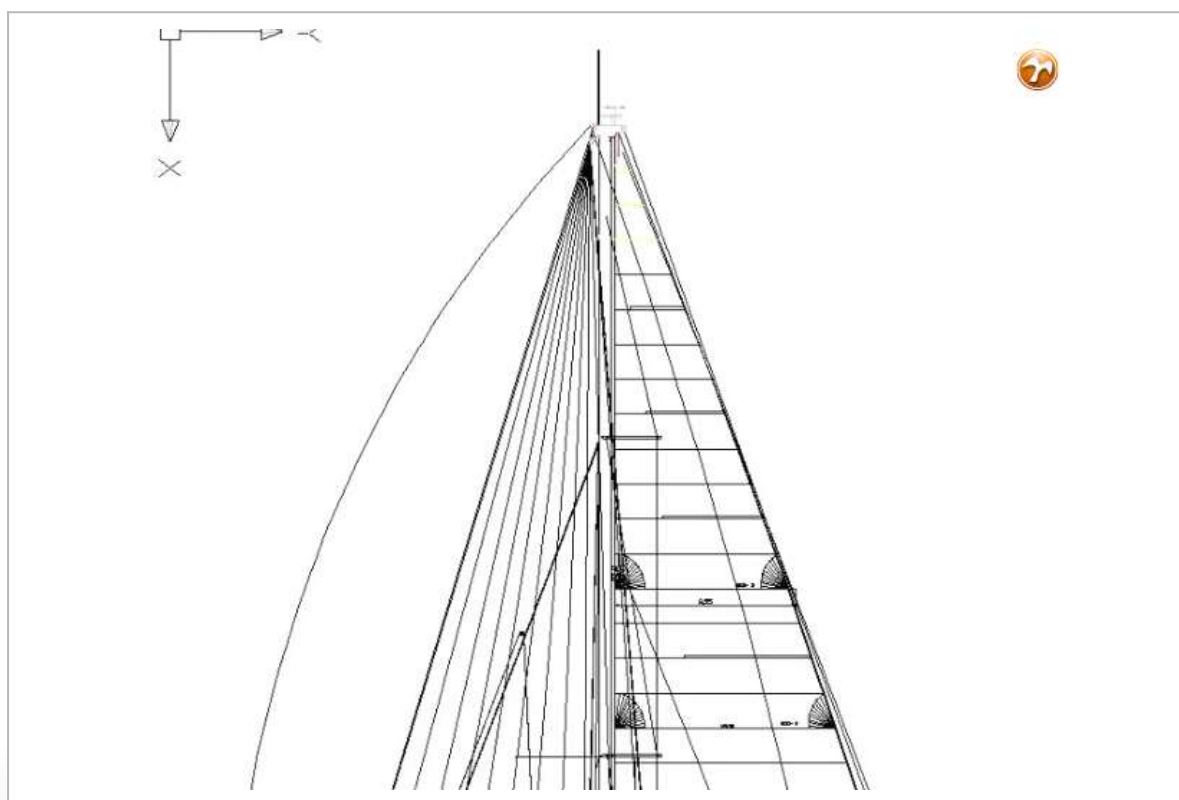
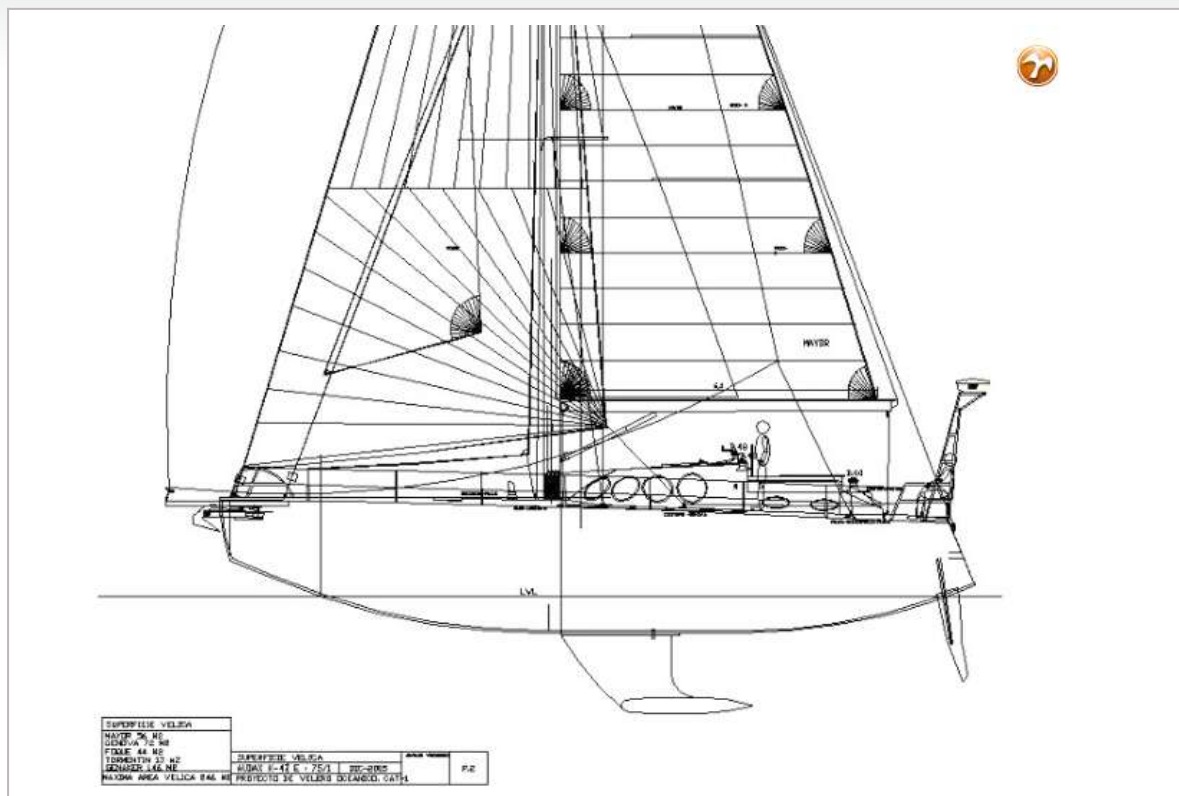




## CUSTOM BUILT AUDAX 47



# CUSTOM BUILT AUDAX 47



# CUSTOM BUILT AUDAX 47

