



DE VALK
YACHT BROKERS

JEANNEAU SUN ODYSSEY 42 DS



DE VALK
YACHT BROKERS

JEANNEAU SUN ODYSSEY 42 DS

BROKER'S COMMENTS

The Sun Odyssey 42DS is the younger sister of the esteemed 49 and 54DS models. She has an elegant modern design, offers plenty of comfort and space. On board, you will experience the "loft" feel with an abundance of natural light and fresh air. Ideal two cabin layout with private facilities for optimal privacy and comfort. So come aboard and experience the Sun Odyssey 42DS. This 42DS from 1st owner is available for viewing by appointment.

Jochem Heijermans

SPECIFICATIONS

Dimensions	12.89 x 4.13 x 2.13 (m)	Builder	Jeanneau (FRA)
Built	2010	Cabins	2
Material	GRP	Berths	6
Engine(s)	1 x Yanmar 4JH5E diesel	Hp/Kw	54.00 (hp), 39.74 (kw)
Asking price	sold (VAT)	Lying	elsewhere / Not at sales office

CONTACT

Sales office	De Valk Belgium	Telephone	+3258680218
Address	1401 PT Nieuwpoort Belgium	E-mail	belgium@devalk.nl

DISCLAIMER

These particulars are given in good faith as supplied but cannot be guaranteed.



JEANNEAU SUN ODYSSEY 42 DS

GENERAL

Model	JEANNEAU SUN ODYSSEY 42 DS
Type	sailing yacht
LOA (m)	12,89
LWL (m)	11,60
Beam (m)	4,13
Draft (m)	2,13
Year built	2010
Builder	Jeanneau (FRA)
Country	France
Designer	Marc Lombard
Displacement (t)	9
Ballast (tonnes)	cast iron 2,78
CE norm	A
Hull material	GRP
Hull colour	white
Hull shape	round-bilged
Keel type	fin keel with bulb
Superstructure material	GRP
Deck material	GRP
Deck finish	teak
Superstructure deck finish	non-skid moulded in
Cockpit deck finish	teak
Window material	polycarbonate
Deckhatch	yes
Portholes	aluminium Gebo
Fuel tank (litre)	polyethylene 136
Freshwater tank (litre)	polyethylene 355
Blackwater tank (litre)	polyethylene 80
Blackwater tank extraction	deck extraction + pump
Wheel steering	cable steering Twin



Emergency tiller	yes
Extra info	First owner

ACCOMMODATION

Cabins	2
Berths	6
Interior	teak
Floor	teak and holly
Saloon	yes
Headroom saloon (m)	2.00
Heating	diesel ducted hot air Webasto
Chart table	yes
Aft Cabin	Owners version
Galley	yes
Countertop	plastic
Sink	stainless steel
Cooker	calor gas Eno
Fridge	12V
Hot water system	220V + engine
Water pressure system	electrical
Owners cabin	double bed Aft cabin
Bed length (m)	2.00 x 1.95
Wardrobe	hanging and shelves
Bathroom	en suite
Toilet	en suite
Toilet system	electric
Wash basin	in the bathroom
Shower	en suite
Guest cabin 1	double bed Forward
Bed length (m)	2.00 x 1.70
Wardrobe	hanging and shelves



Bathroom	en suite
Toilet	en suite
Toilet system	manual
Wash basin	in the bathroom

MACHINERY

No of engines	1
Make	Yanmar
Type	4JH5E
HP	54
kW	39.74
Fuel	diesel
Engine hours	350
Engine cooling system	freshwater heat exchanger
Engine controls	bowden cable
Gearbox	mechanical
Bowthruster	electric
Exhaust	watercooled
Propeller type	fixed Max Prop
Propeller blades	3
Manual bilge pump	yes
Electric bilge pump	yes
Electrical installation	12V/220V
Start battery	(2019)
Service battery	(2019)
Bowthruster battery	(2019)
Battery monitor	Mastervolt (2019)
Battery charger	(2019)
Shorepower	with cable

NAVIGATION



JEANNEAU SUN ODYSSEY 42 DS

Compass	2x Plastimo
Electric compass	On autopilot
Depth sounder/log	2x Raymarine ST 70
Windset	Raymarine (needs to be serviced)
VHF	Raymarine
Autopilot	Raymarine
Rudder angle indicator	Raymarine autopilot
Radar/GPS/plotter	Raymarine E90 + Raymarine on TV display salon
Navtex	Furuno Navtex NX-300
AIS transceiver	yes
Navigation lights	yes

EQUIPMENT

Sprayhood	Windows (2023)
Bimini	yes
Cockpit cushions	yes
Cockpit table	yes
Bathing platform	yes
Boarding ladder	stainless steel
Deck shower	yes
Anchor	yes
Windlass	electrical Quick
Capstan	yes
Sea railing	stainless steel
Grab rail (superstructure)	stainless steel
Railing side opening gates	yes
Fenders	yes
Mooring lines	yes
TV	yes
Radio	yes
Speakers in salon	Bose



RIGGING

Rigging	sloop
Standing rigging	wire
Brand mast	Seldén
Material mast	aluminium
Spreaders	2x
Mainsail	Technique Voile
Genoa	Elvstrom
Genoa furler	Technique Voile
A-symmetric spi	Technique Voile
Reefing System	main in-mast furling
Boomvang	mechanical
Genoa sheetwinches	2 x Harken 46ST
Halyard winches	2 x Harken 40ST
Gennaker pole	aluminium
Extra info	Electrical winches



JEANNEAU SUN ODYSSEY 42 DS



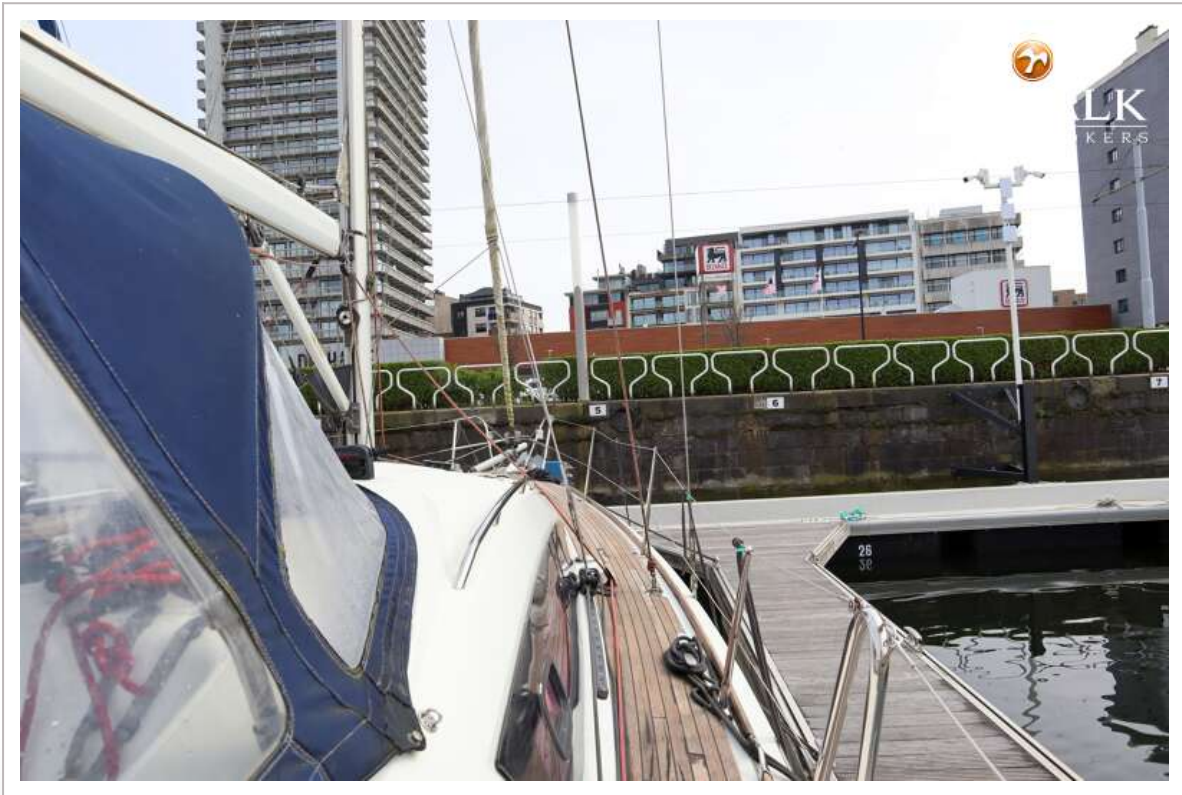
JEANNEAU SUN ODYSSEY 42 DS



JEANNEAU SUN ODYSSEY 42 DS



JEANNEAU SUN ODYSSEY 42 DS



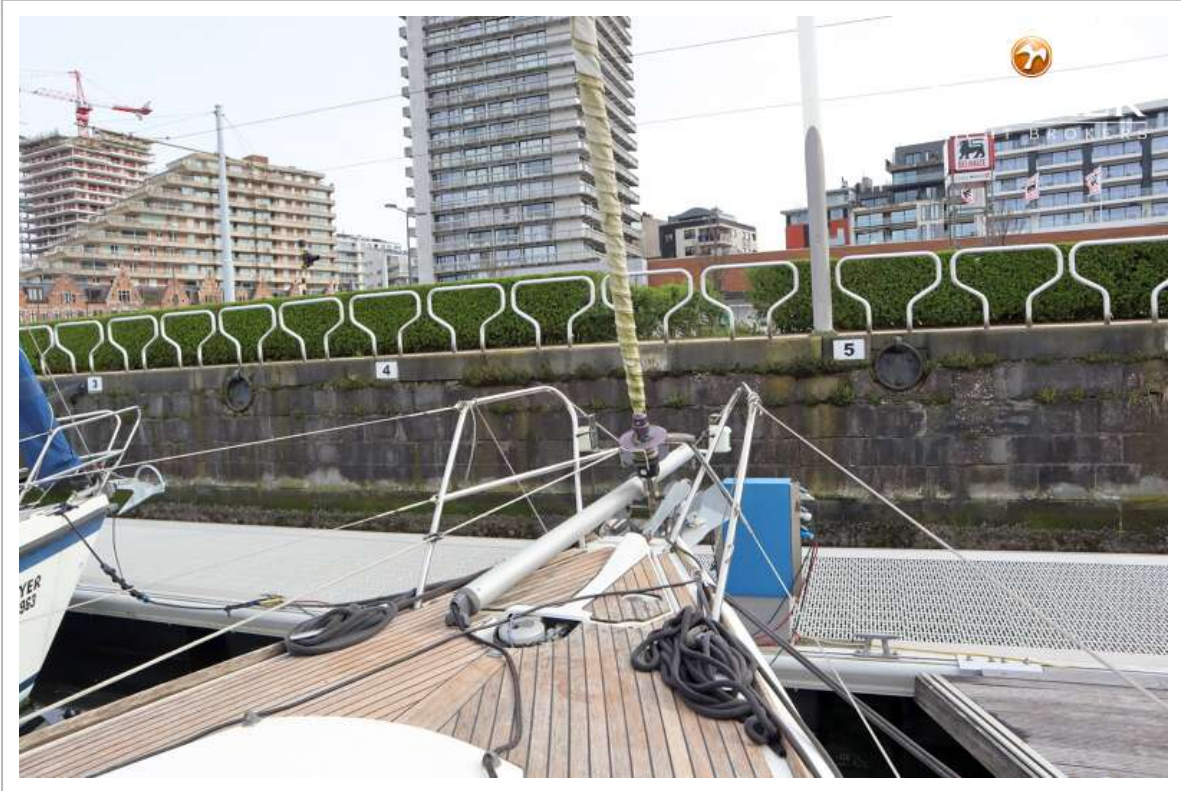
JEANNEAU SUN ODYSSEY 42 DS



JEANNEAU SUN ODYSSEY 42 DS



JEANNEAU SUN ODYSSEY 42 DS



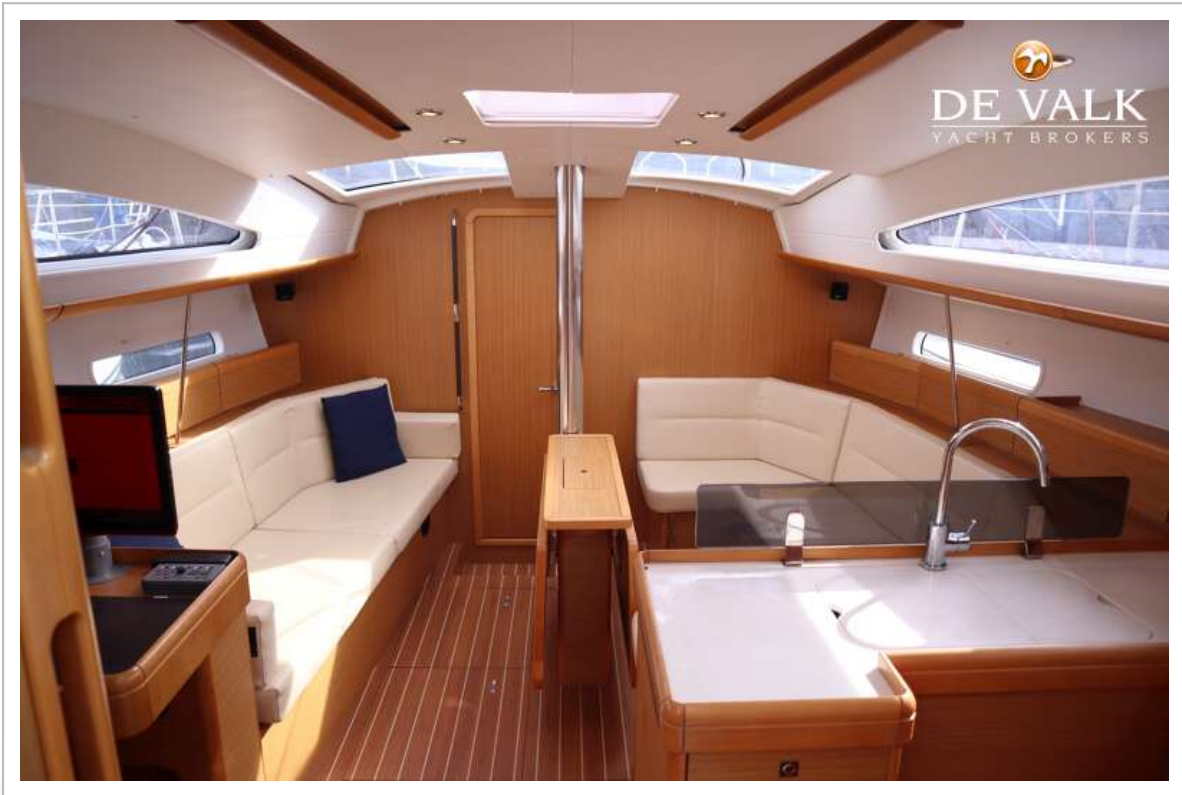
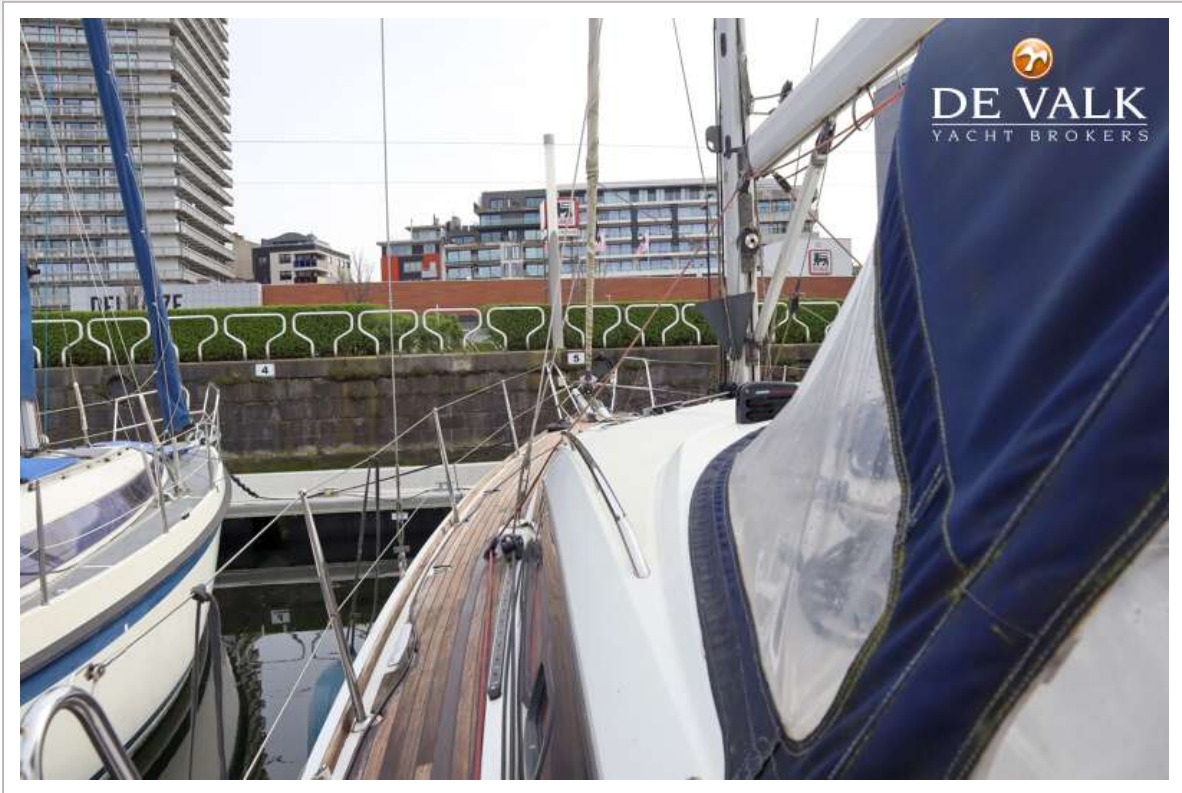
JEANNEAU SUN ODYSSEY 42 DS



JEANNEAU SUN ODYSSEY 42 DS



JEANNEAU SUN ODYSSEY 42 DS



JEANNEAU SUN ODYSSEY 42 DS



JEANNEAU SUN ODYSSEY 42 DS



JEANNEAU SUN ODYSSEY 42 DS



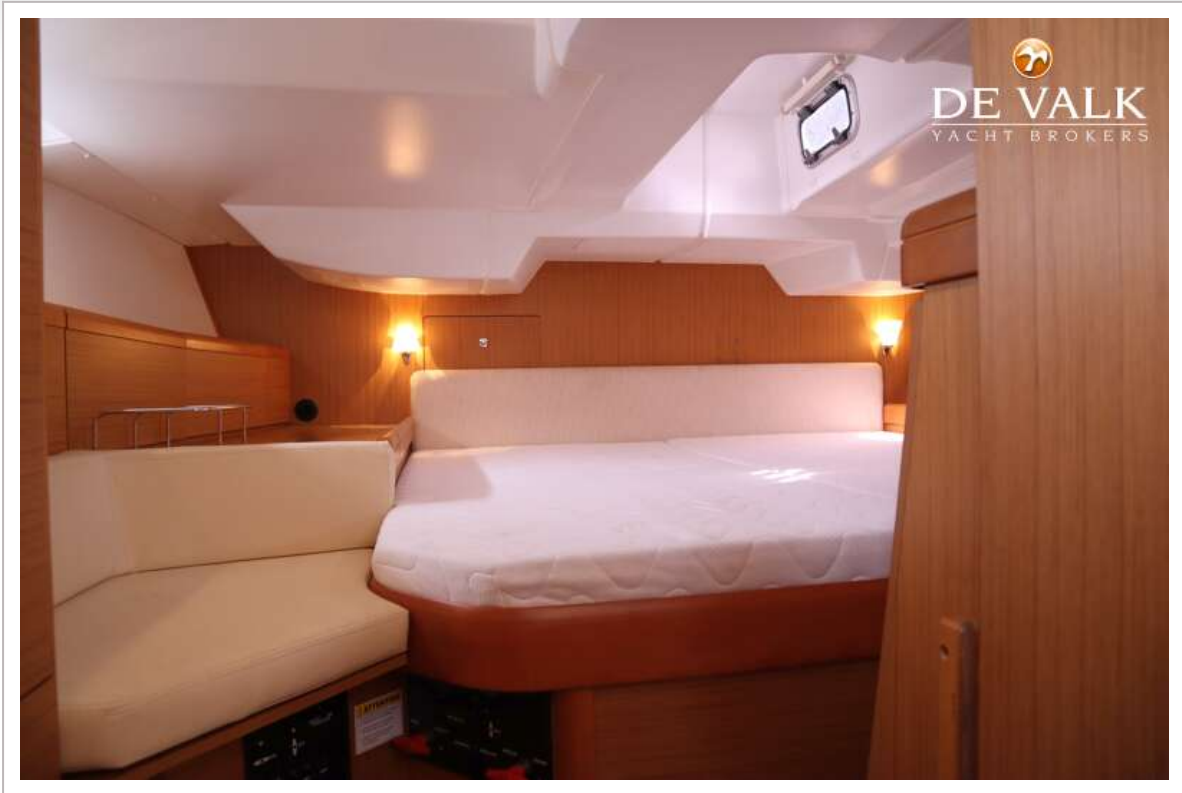
JEANNEAU SUN ODYSSEY 42 DS



JEANNEAU SUN ODYSSEY 42 DS



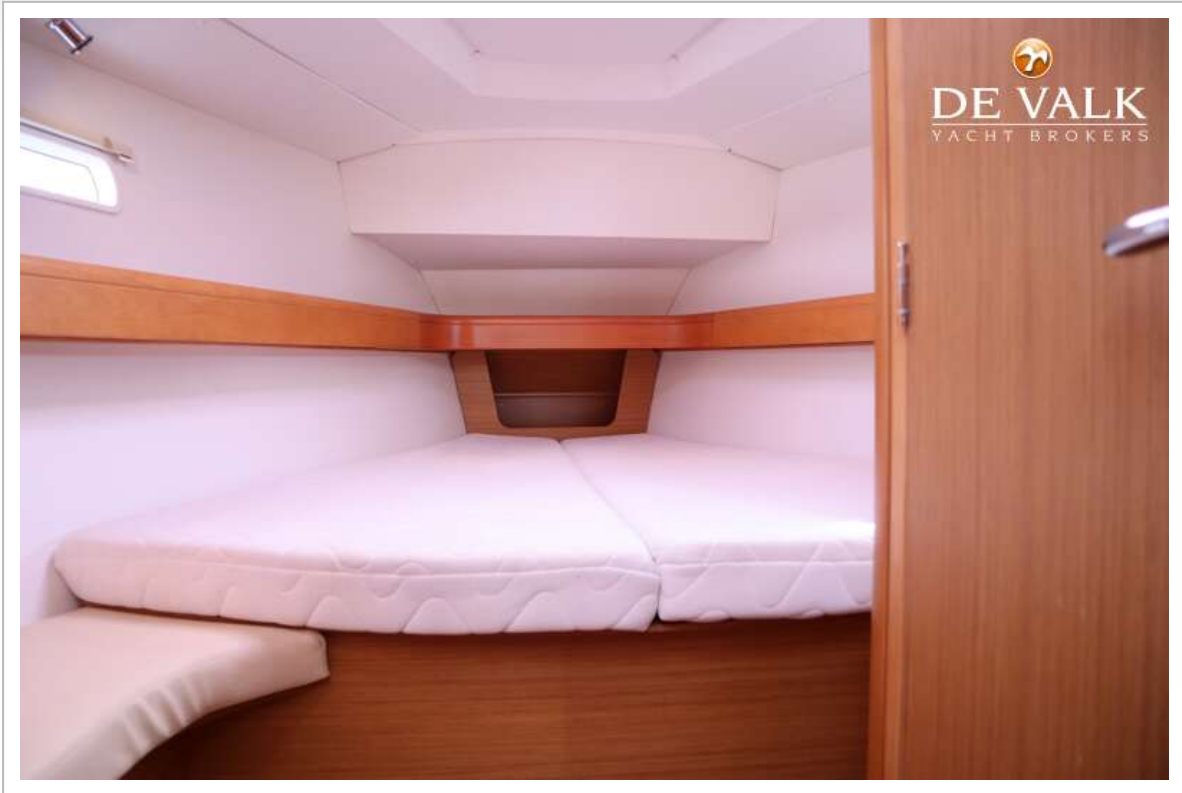
JEANNEAU SUN ODYSSEY 42 DS



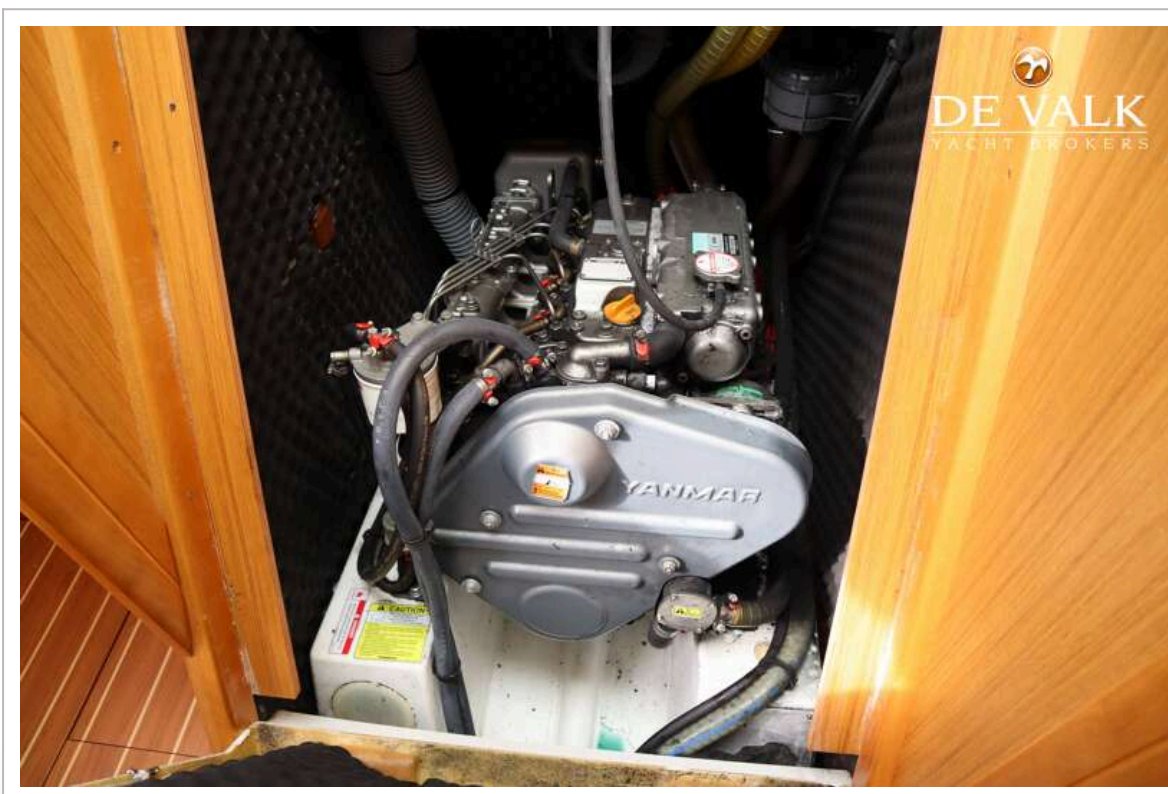
JEANNEAU SUN ODYSSEY 42 DS



JEANNEAU SUN ODYSSEY 42 DS



JEANNEAU SUN ODYSSEY 42 DS



JEANNEAU SUN ODYSSEY 42 DS

