



DE VALK
YACHT BROKERS

Ananta

NAJAD 390



DE VALK
YACHT BROKERS

NAJAD 390

BROKER'S COMMENTS

"The Najad 390 is easy to handle under power and to sail shorthanded. She has a deep encapsulated long fin keel and rudder protected by a large skeg. This means she doesn't pound to windward and tracks well downwind. She is a classic example of Swedish craftsmanship and design. The boat is solidly constructed, with a high-quality finish and fittings. She is a pleasure to sail, with a balanced helm and a responsive rig. The interior is spacious and cozy, with plenty of storage space and ventilation. The cockpit is large and protected, with good visibility and access to the controls."

Jörg Hellmich

SPECIFICATIONS

Dimensions	11,75 x 3,50 x 1,85 (m)	Builder	Najad Yachts
Built	1987	Cabins	2
Material	GRP	Berths	6
Engine(s)	1 x Volvo Penta MD31 diesel	Hp/Kw	62 (hp), 45,63 (kw)
Asking price	UNDER OFFER	Lying	Spain

CONTACT

Sales office	De Valk Almeria	Telephone	+34 950 497 825
Address	Puerto de Almerimar Darsena de la Batea 1, No. 42, 04711 Almeria Spain	Fax	+34 950 497 825
		Email	almeria@devalk.nl

DISCLAIMER

These particulars are given in good faith as supplied but cannot be guaranteed and cannot be used for contracts.



GENERAL

Model	NAJAD 390
Type	sailing yacht
LOA (m)	11,75
LWL (m)	10,00
Beam (m)	3,50
Draft (m)	1,85
Air draft (m)	18,50
Headroom (m)	1,95
Year built	1987
Launched	1987
Builder	Najad Yachts
Country	Sweden
Designer	G.Nissen
Displacement (t)	9,5
Ballast (tonnes)	cast iron 4
CE norm	NA
Hull material	GRP
Hull colour	white
Hull shape	S-bilged
Keel type	fin keel
Superstructure material	GRP
Rubbing strake	stainless steel
Deck material	GRP
Deck finish	teak
Superstructure deck finish	teak
Cockpit deck finish	teak
Dorades	2 units
Window frame	aluminium
Window material	tempered glass
Deckhatch	Lewmar



Portholes	aluminium
Fuel tank (litre)	stainless steel 250
Level indicator (fuel tank)	VDO
Freshwater tank (litre)	stainless steel 350
Level indicator (freshwater)	VDO
Blackwater tank (litre)	polyethylene 40 (04.2012)
Blackwater tank extraction	deck extraction + uw line
Wheel steering	cable steering Solimar
Emergency tiller	yes
More info on hull	Teak deck needs maintenance
Extra info	Stored on hard stand
Extra info	one window in cockpit broken
Extra info	UW hull sanded and primed in 2022

ACCOMMODATION

Cabins	2
Berths	6
Interior	mahogany
Layout	2 cabin version
Floor	wood
Saloon	yes
Headroom saloon (m)	1,95
Heating	diesel ducted hot air Eberspächer D4-L
Chart table	yes
Aft Cabin	Owner's cabin
Convertible berth	in saloon
Galley	L-shape
Countertop	plastic
Sink	stainless steel double
Cooker	calor gas Optimus



Oven	Optimus
Fridge	Frigoboat 130L
Hot water system	220V + engine Boiler
Water pressure system	electrical
Manual and/or foot pump	yes
Hot water tap	yes
Crockery	yes
Owners cabin	twin single Aft
Bed length (m)	1,85 x 0,80
Wardrobe	hanging/drawers/shelves
Toilet	shared
Toilet system	manual Jabsco
Wash basin	at the toilet
Shower	shared
Guest cabin 1	v-bed Forward
Bed length (m)	1,85
Wardrobe	hanging/drawers/shelves
Extra info	New interior varnish 2012, Alcantara upholstery
Extra info	New hoses & toilet pump in 2012

MACHINERY

No of engines	1
Make	Volvo Penta
Type	MD31
HP	62
kW	45.63
Fuel	diesel
Year installed	1987
Maximum speed (kn)	8
Cruising speed (kn)	6
Consumption (l/hr)	3,5



Range (nm)	450
Engine hours	2660
Engine cooling system	freshwater heat exchanger
Drive	shaft
Shaft seal	yes
Engine controls	bowden cable
Gearbox	mechanical
Bowthruster	electric (defect)
Exhaust	watercooled
Propeller type	fixed
Propeller blades	3
Propeller shaft material	stainless steel
Shaft lubrication	water
Manual bilge pump	yes
Electric bilge pump	Whale
Electrical installation	12V System
Start battery	1 x Mac Gold Plus 12V / 110Ah (2022)
Service battery	3 x Mac Gold Plus 12V / 110Ah (2022)
Battery monitor	E-xpert Pro (2010)
Battery charger	Victron energy 12V / 50A (2010)
Inverter	Victron
Solar panel	yes
Diode battery combiners	Victron Smart Solar Charger MPPT100
Shorepower	with cable 230V
Extra info	Alternator with 50A
Extra info	New shaft (cutless) bearing (2022)

NAVIGATION

Compass	Silva 150
Electric compass	yes



Multi control display	Raymarine ST 60+ Tridata (2012)
Depth sounder/log	Raymarine ST60 (2012)
Windset	Raymarine ST60+ (2012)
VHF	Standard Horizon Explorer GX1700E
Autopilot	Raymarine ST7002 (2012)
Wind vane steering install.	Hydrovane (2022) NOT INCLUDED
Rudder angle indicator	Raymarine ST60+
Radar/GPS/plotter	Raymarine C120W (2012)
Navtex	K41 Navtex receiver
Electronis chart(s)	Navionics (2012)
AIS transceiver	Icom MXA-5000 (2022) with ne antenna and wifi connection
EPIRB	Rescueme
Extra info	Radfome digitale (2010)
Extra info	RS125 GPS & VHF Antenna (2012)

EQUIPMENT

Fixed windscreen	yes
Sprayhood	HR Zeilen (2012)
Cockpit cover	HR Zeilen (2012)
Cockpit cushions	yes
Cockpit table	yes
Bathing platform	teak with SS frame
Boarding ladder	stainless steel
Anchor	Rocna 20 kg (2022)
Anchor chain	50 m
Anchor 2	Bruce
Windlass	electrical & bowden cable Seawolf (defect)
Sea railing	wire
Grab rail (superstructure)	teak
Pushpit	yes



Pulpit	yes
Life raft	container Laldas Atlantic
Life raft (pers)	6
Last life raft survey	2018
Fenders	yes
Mooring lines	yes
TV	LG Flatron (2011)
Radio	Fusion
Radio-cd player	Sony (2011)
Cockpit speakers	yes
Speakers in salon	yes
Clock - barometer	yes
Fire extinguisher	yes
Extra info	Participated in the ARC in 2018

RIGGING

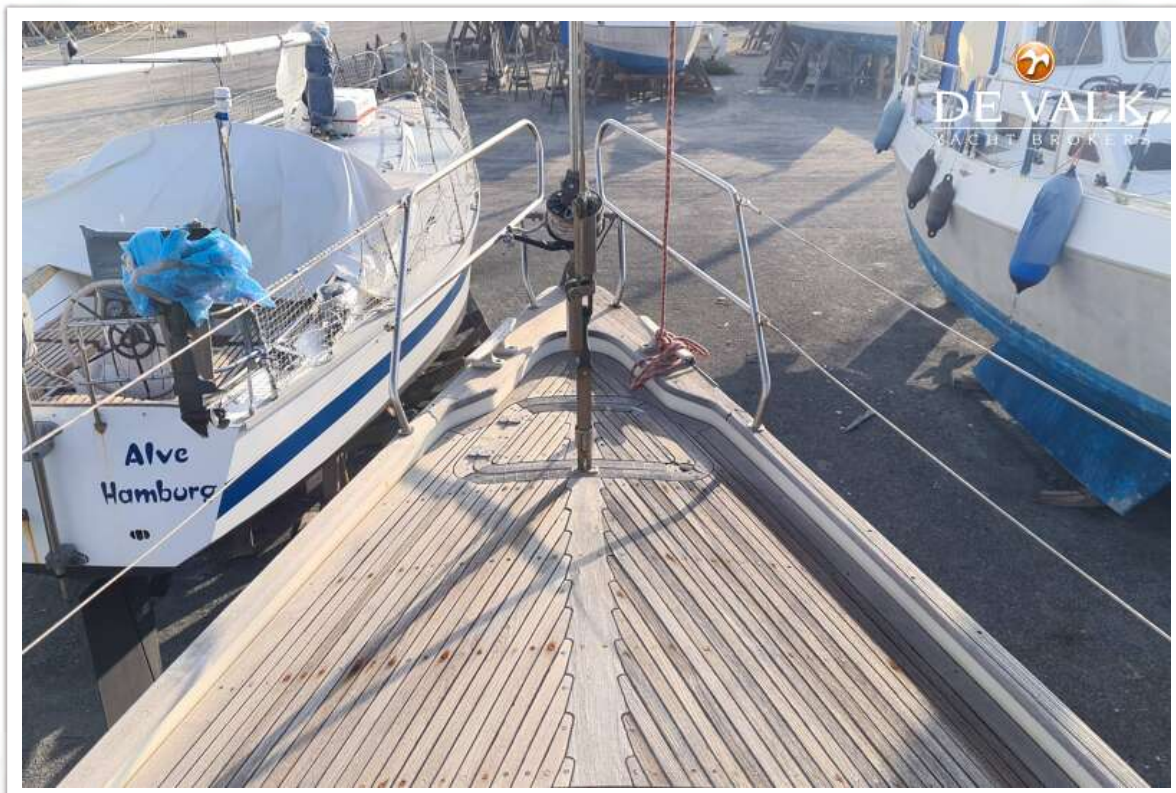
Rigging	sloop
Standing rigging	wire last check in 2018
Brand mast	Seldén
Material mast	aluminium
Spreaders	2 sets
Mainsail	Hyde (04.2012)
Jib	in very good condition
High aspect	X-cut with add. reef (2014)
Genoa	Hyde (04.2012)
Genoa furler	Furlex
Removable innerforestay	yes
Stormjib	yes
Reefing System	main in-mast furling
Backstay adjuster	mechanical



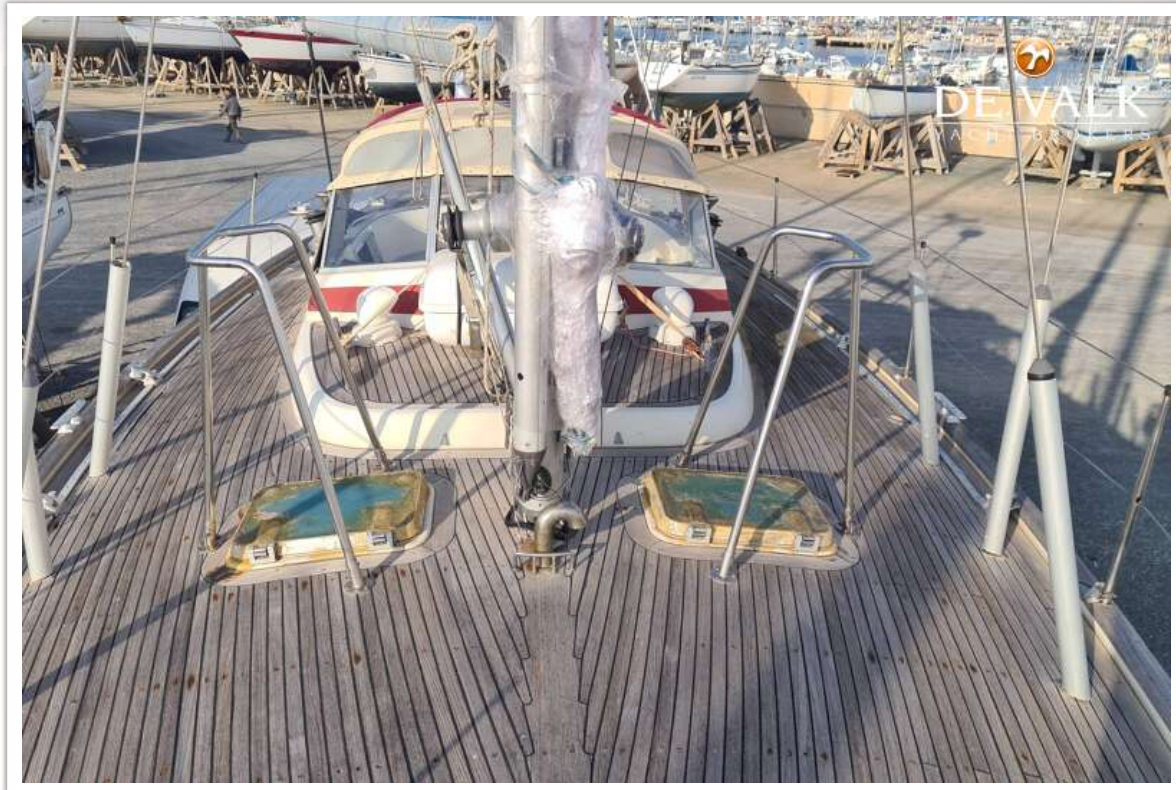
Boomvang	mechanical and tackle Selden Rodkicker
Primary sheet winch	2 x Lewmar ST 30" 2 SP
Genoa sheetwinches	2 x Lewmar ST 52" 2 SP
Halyard winches	2 x Lewmar ST 40" 2 SP
Spi-pole	aluminium
Isolated backstay	yes



NAJAD 390



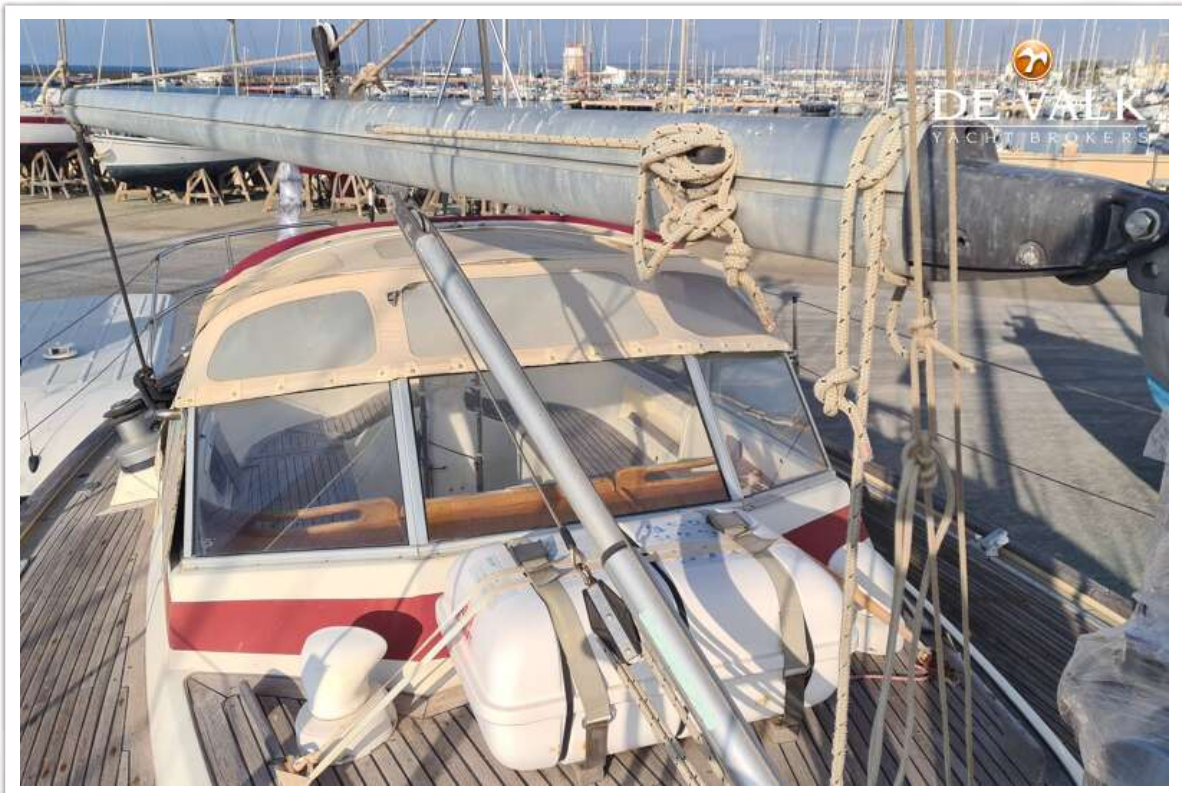
NAJAD 390



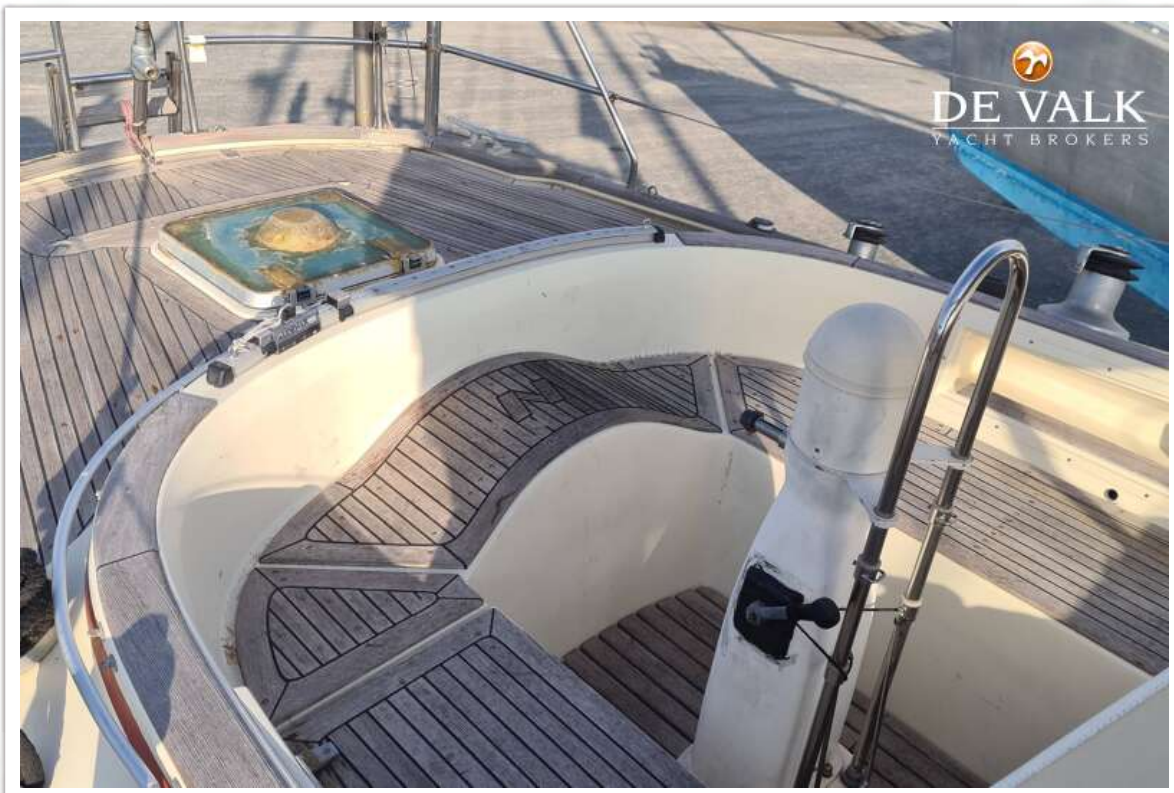
NAJAD 390



NAJAD 390



NAJAD 390



NAJAD 390



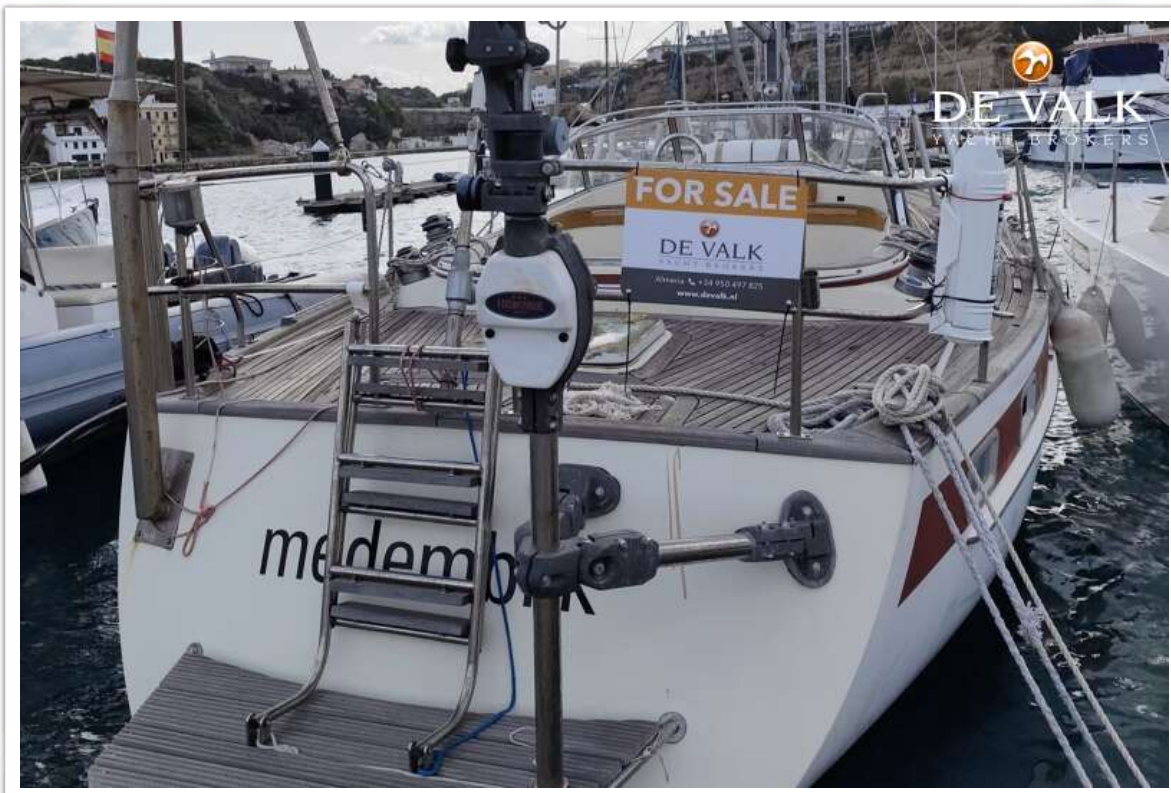
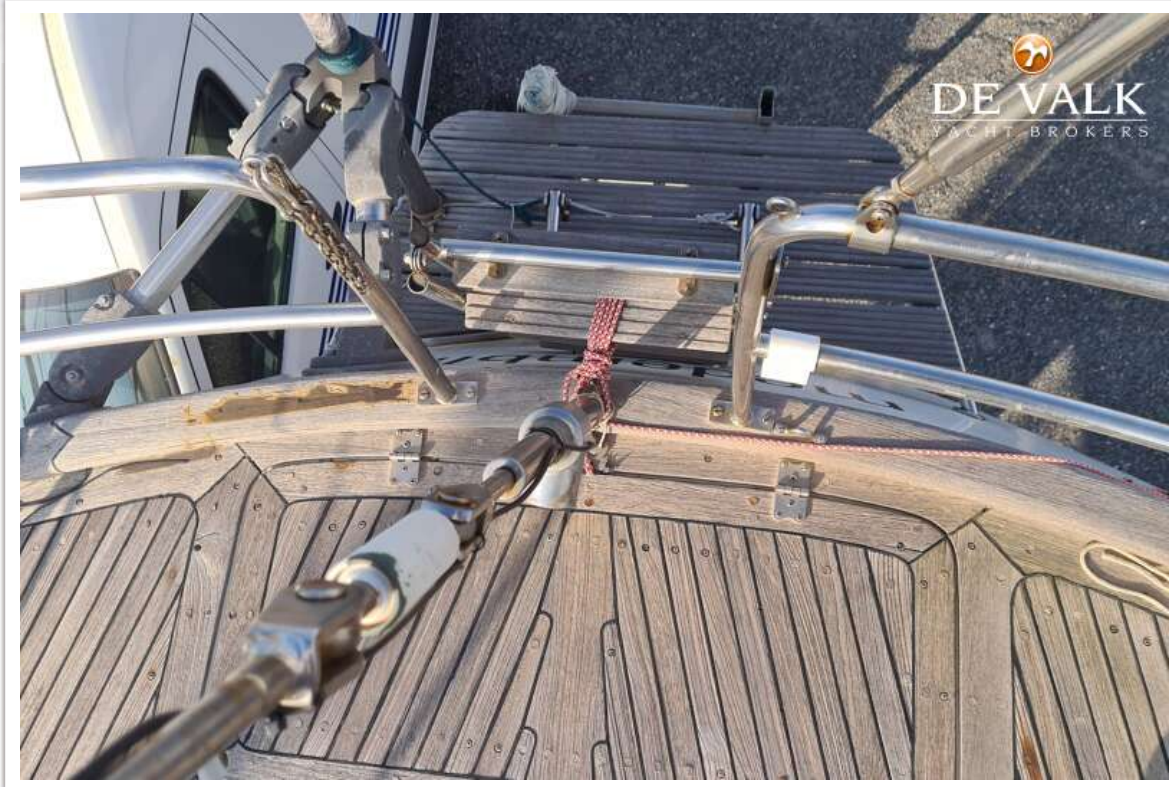
NAJAD 390



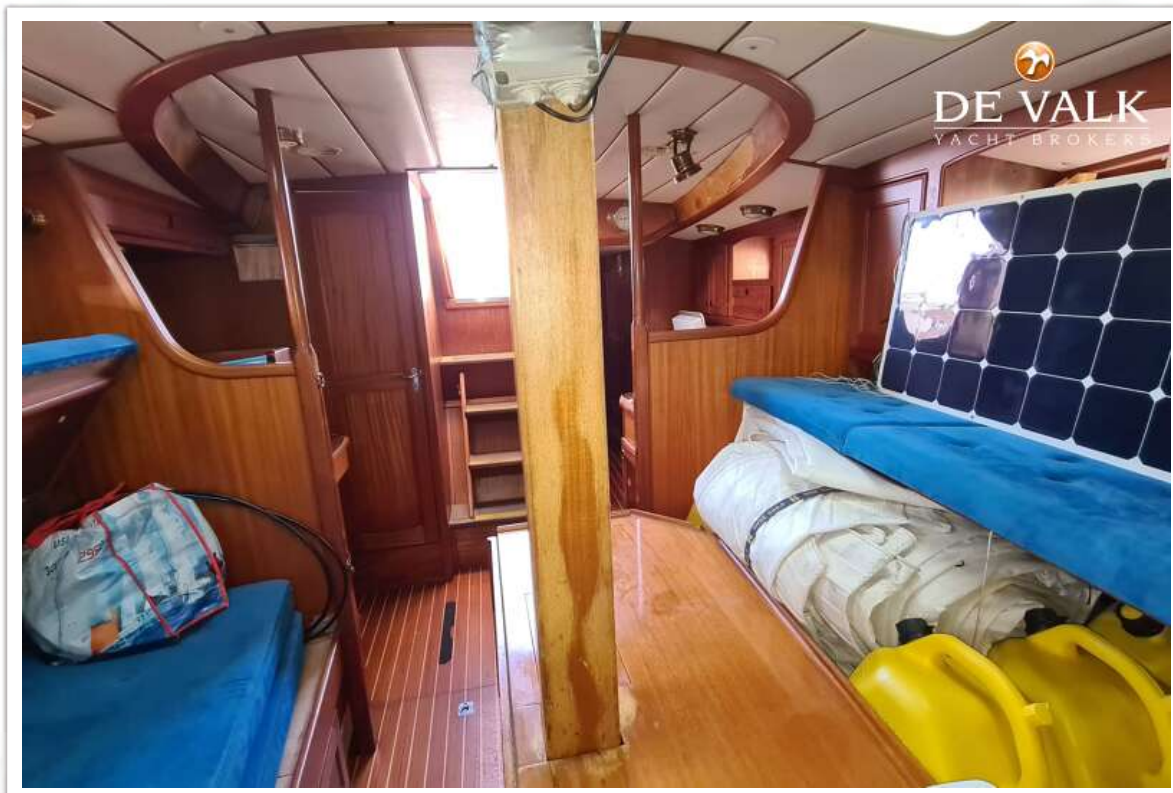
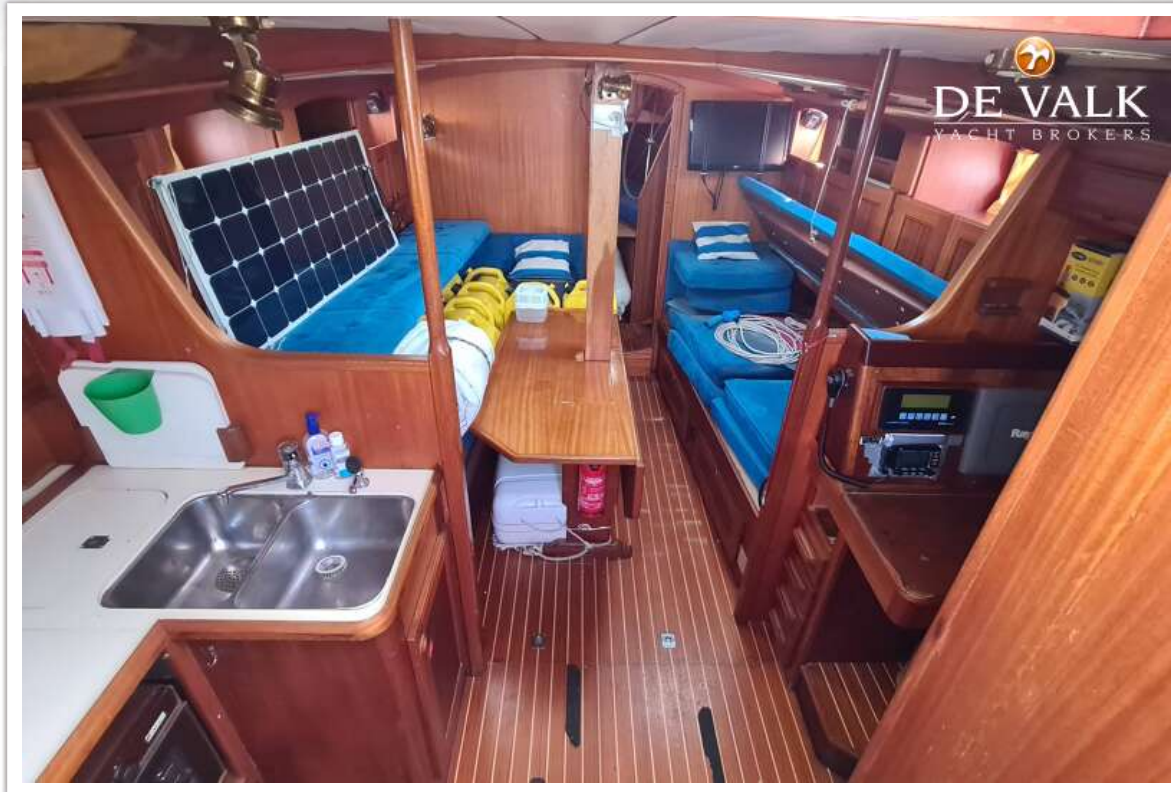
NAJAD 390



NAJAD 390



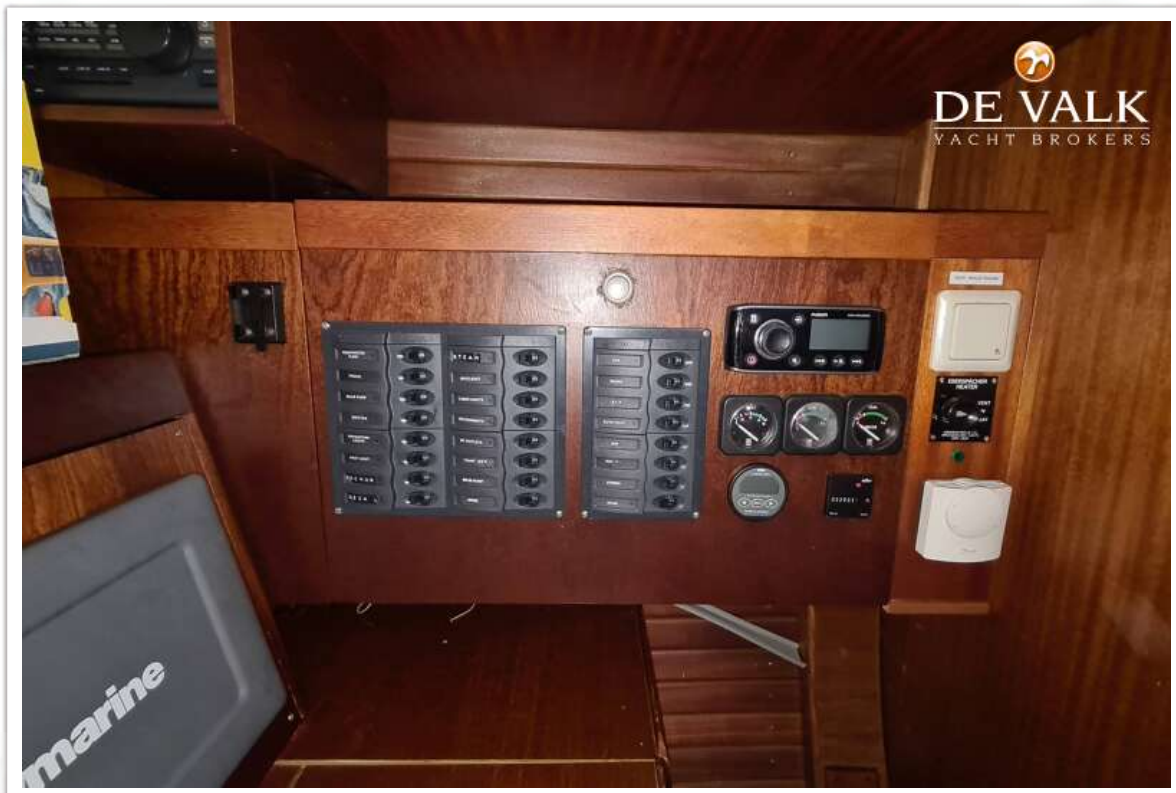
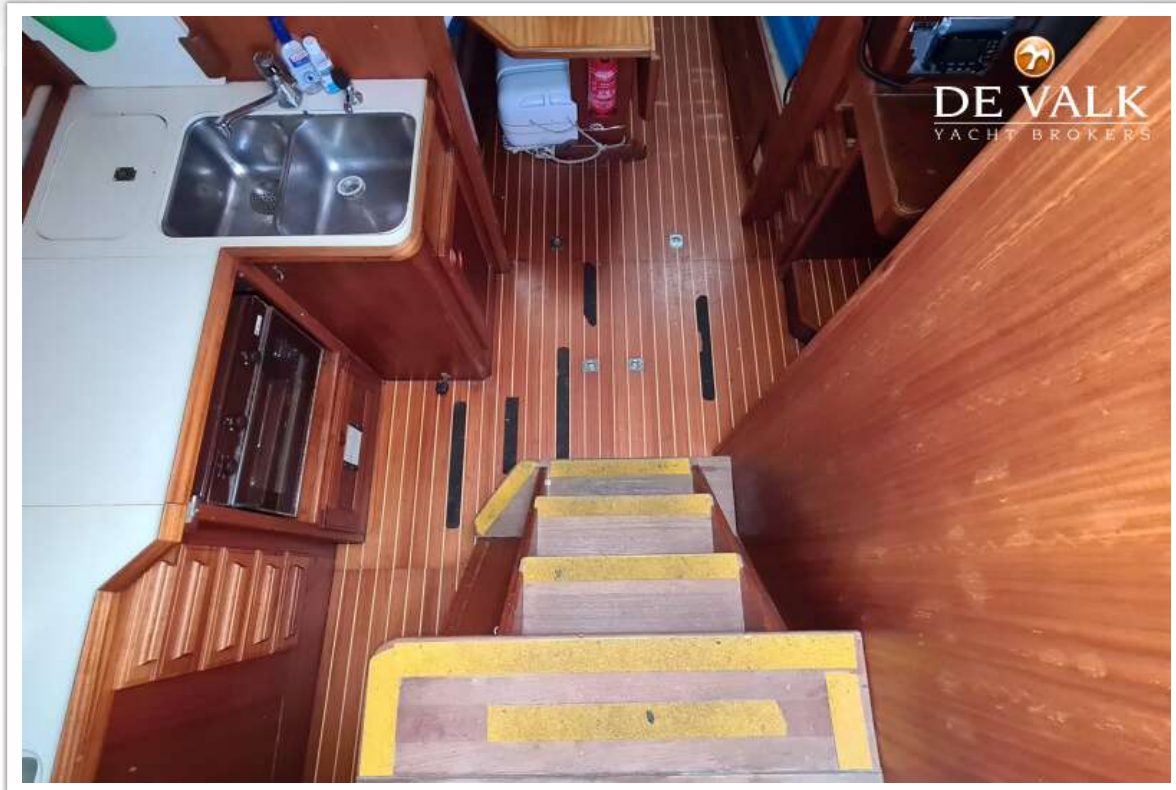
NAJAD 390



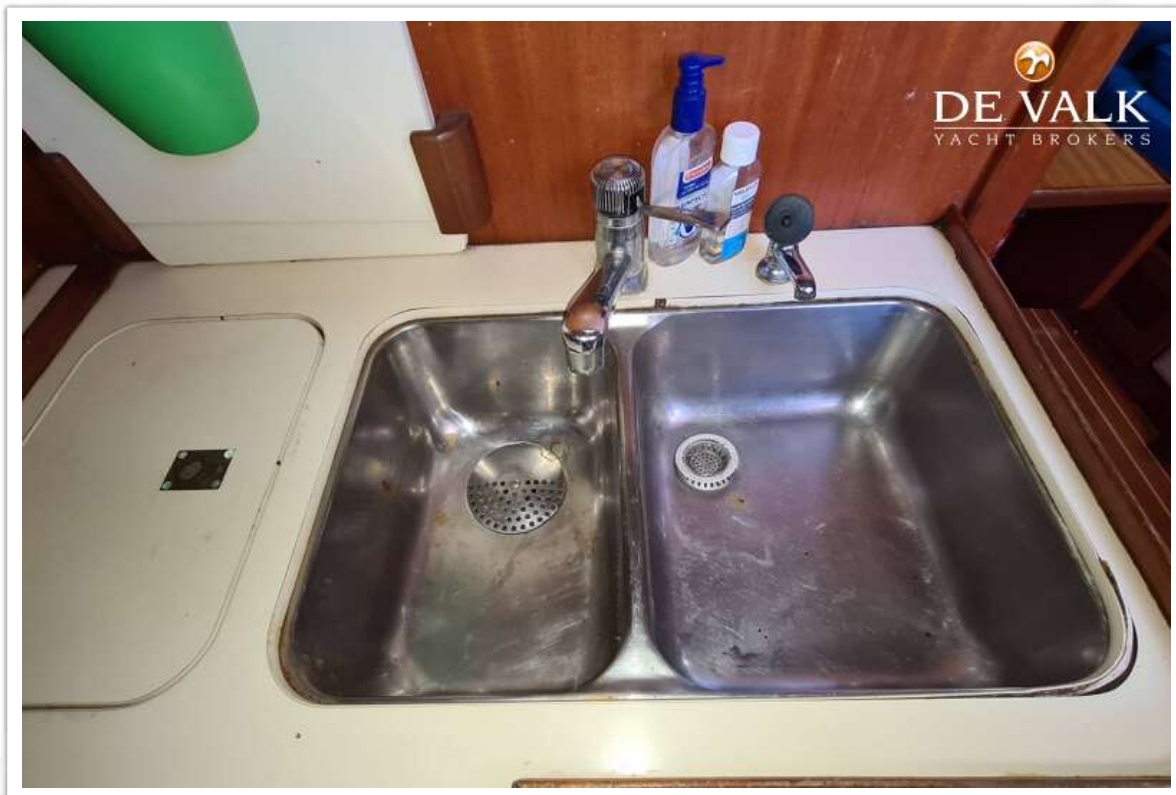
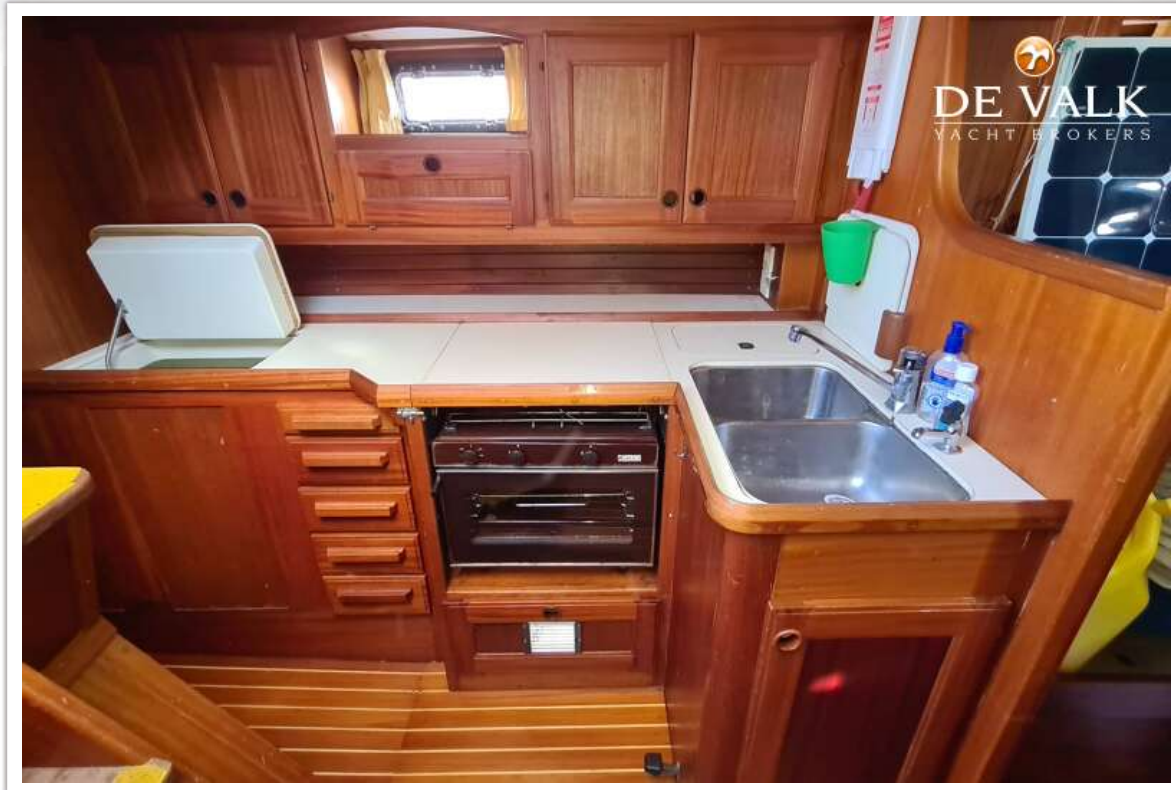
NAJAD 390



NAJAD 390



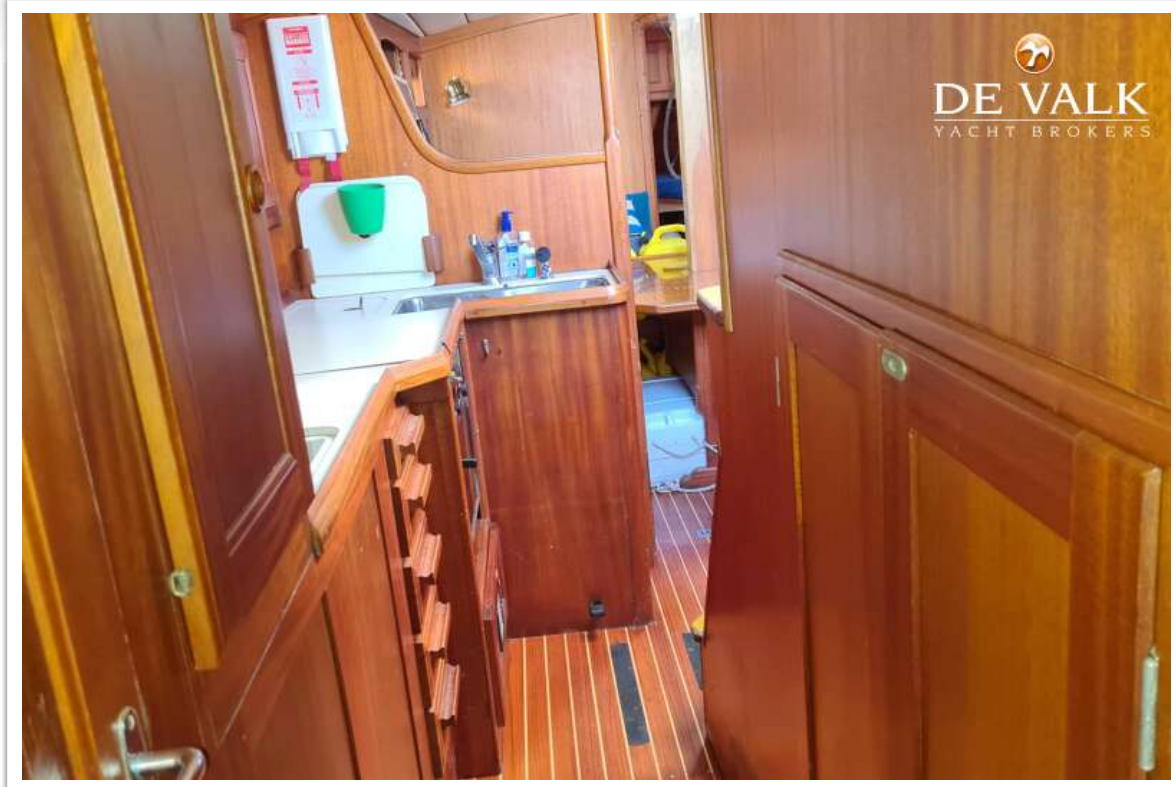
NAJAD 390



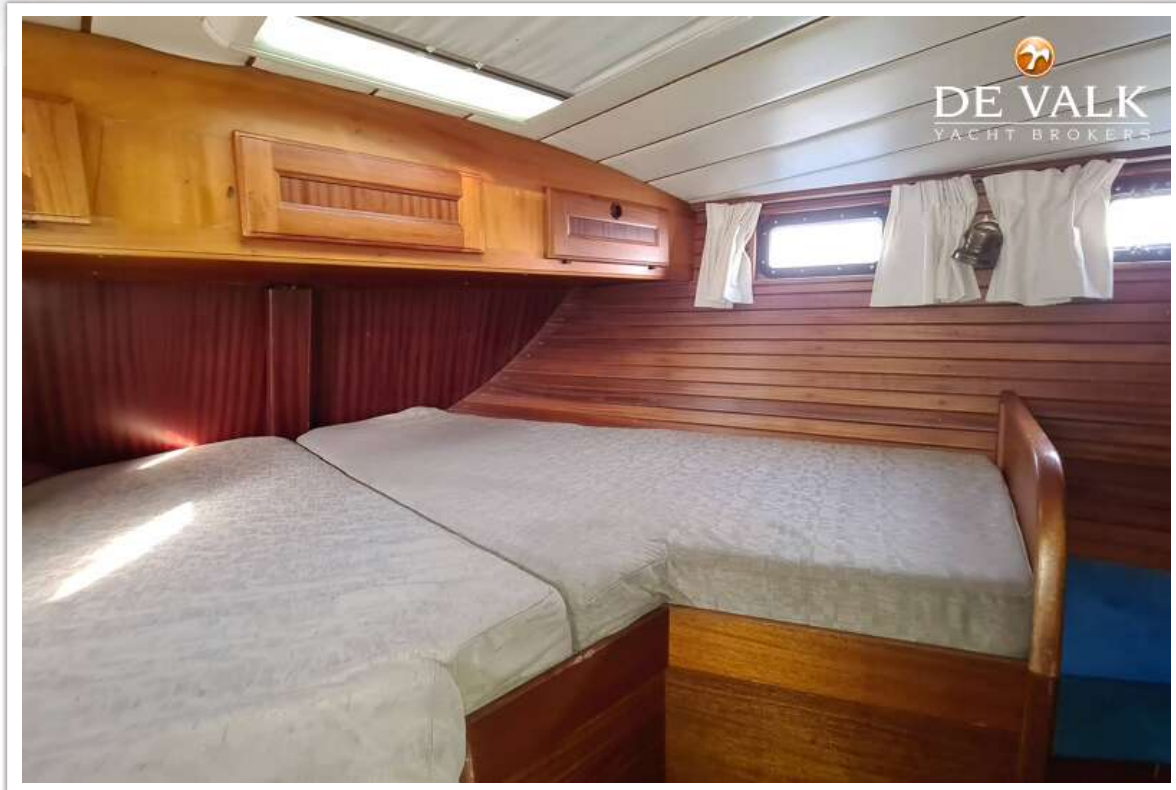
NAJAD 390



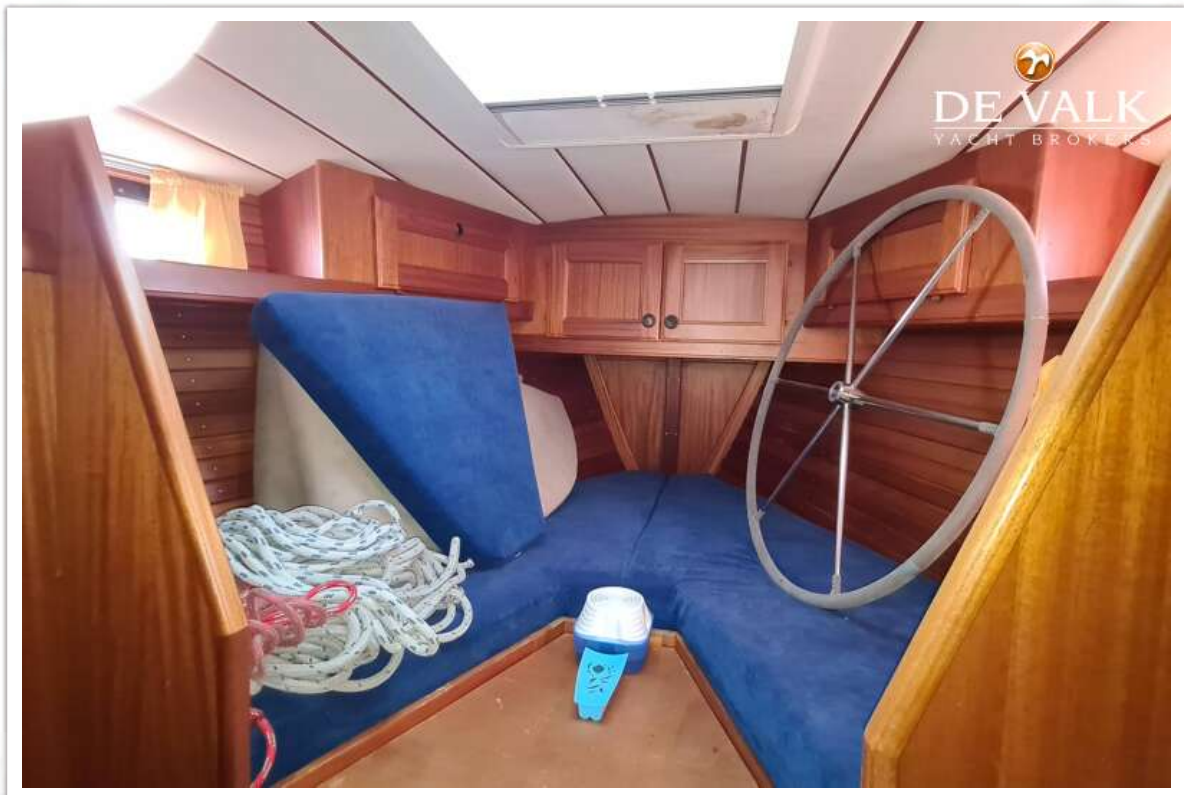
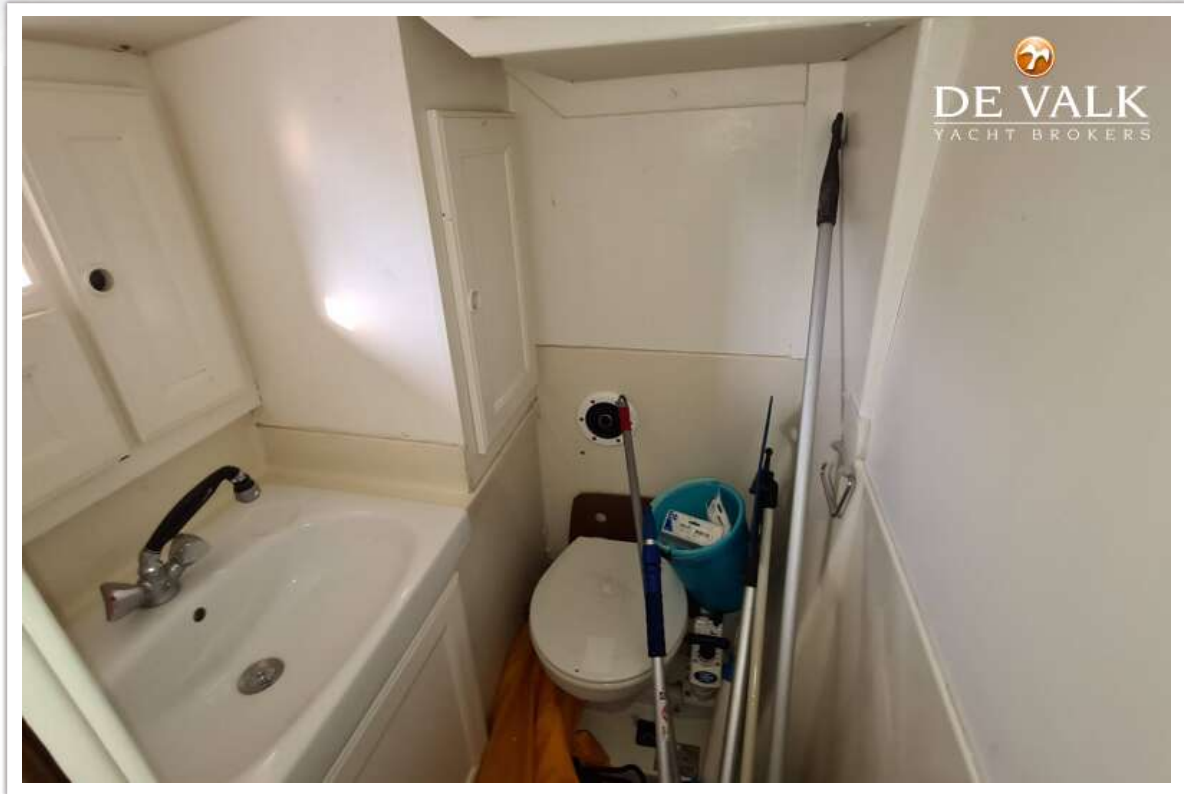
NAJAD 390



NAJAD 390



NAJAD 390



NAJAD 390



NAJAD 390

