



## LEOPARD 45



# LEOPARD 45

## BROKER'S COMMENTS

The Leopard 45 is a very comfortable and strong sailing catamaran. This specific model is a used catamaran but has been well maintained throughout its life. With blue capabilities this pre-owned catamaran is perfect for live aboard or charter. This Leopard 45 can be sailed singlehanded with no troubles. This catamaran has 3+1 double cabins with en-suite heads, with electric heads and faucet showers, and is central air conditioned. The saloon area is very open and comfortable with a large u shaped sofa. She is Australian flagged and Australian tax paid.

*Maarten de Kroon*

## SPECIFICATIONS

<b>Dimensions</b>	13.70 x 7.23 x 1.30 (m)	<b>Builder</b>	Robertson & Caine
<b>Built</b>	1999	<b>Cabins</b>	4
<b>Material</b>	GRP	<b>Berths</b>	8
<b>Engine(s)</b>	2 x Yanmar 4JH4E diesel	<b>Hp/Kw</b>	2 x 53.00 (hp), 39.01 (kw)
<b>Asking price</b>	sold (VAT )	<b>Lying</b>	elsewhere / Not at sales office

## CONTACT

<b>Sales office</b>	De Valk Asia	<b>Telephone</b>	+65 826 679 95
<b>Address</b>	Penang region Penang MY	<b>E-mail</b>	asia@devalk.nl

## DISCLAIMER

These particulars are given in good faith as supplied but cannot be guaranteed.



## GENERAL

Model	LEOPARD 45
Type	catamaran sailing yacht
LOA (m)	13,70
Beam (m)	7,23
Draft (m)	1,30
Headroom (m)	2,00
Year built	1999
Builder	Robertson & Caine
Country	South Africa
Designer	Simonis Voogd Design
Displacement (t)	9,89
Hull material	GRP
Hull thickness (mm)	10mm
Hull shape	round-bilged
Keel type	fin keel
Superstructure material	GRP
Deck material	GRP
Deck finish	non-skid moulded in
Superstructure deck finish	non-skid moulded in
Cockpit deck finish	non-skid moulded in
Antifouling (year)	2021
Window frame	aluminium
Window material	polycarbonate
Portholes	aluminium
Insulation	foam
Radar arch	non collapsible
Fuel tank (litre)	aluminium
Fuel tank 2 (litre)	aluminium
Freshwater tank (litre)	polyethylene 800 l
Level indicator (freshwater)	Visual



Blackwater tank (litre)	aluminium
Level indicator (blackwater)	Visual
Blackwater tank extraction	deck extraction + uw line
Wheel steering	cable steering
Outside helm position	chain steering
Emergency tiller	Yes

## ACCOMMODATION

Cabins	4
Berths	8
Floor	teak
Air-conditioning	reverse cycle airco
Chart table	yes
Aft Cabin	2 aft cabins
Dinette	yes
Dinette to convert into berth	yes
Opening door to cockpit	yes
Galley	yes
Countertop	corian
Sink	stainless steel
Cooker	calor gas 4 burner
Oven	Calor gas
Fridge	Hisense 220v
Freezer	Seafröst 200 litre
Hot water system	220V/engine/heating
Water pressure system	electrical
Kettle	yes
Hot water tap	yes
Ice maker	Duro
Crockery	yes
Owners cabin	double bed



Bed length (m)	200 cm
Wardrobe	hanging/drawers/shelves
Bathroom	en suite
Toilet	en suite
Toilet system	electric
Wash basin	at the toilet
Shower	en suite
Guest cabin 1	double bed
Bed length (m)	200cm
Wardrobe	hanging/drawers/shelves
Bathroom	en suite
Toilet	en suite
Toilet system	electric
Wash basin	at the toilet
Shower	en suite
Guest cabin 3	double bed
Bed length (m)	200 cm
Wardrobe	hanging/drawers/shelves
Toilet	separate
Toilet system	electric
Wash basin	at the toilet
Shower	separate
Guest cabin 4	Converted into workshop

## MACHINERY

No of engines	2
Make	Yanmar
Type	4JH4E
HP	53
kW	39.01
Fuel	diesel



Year installed	1999
Year of overhaul	Rebuilt 2020
Maximum speed (kn)	8
Cruising speed (kn)	6
Consumption (l/hr)	2,5
Engine cooling system	Sea water heat exchanger, wet exhaust
Drive	shaft
Shaft seal	yes
Engine controls	bowden cable
Gearbox	mechanical
Propeller type	fixed
Propeller blades	3
Propeller shaft material	stainless steel
Shaft lubrication	grease
Manual bilge pump	yes
Electric bilge pump	yes
Generator	dry exhaust Hatz 1B20
Batteries	yes
Start battery	2x
Service battery	5x Victron AGM 165 Amp
Battery monitor	Renogy
Battery charger	Victron 60 Amp
Inverter	Victron 2000W
Wind generator	yes
Solar panel	975 Watt + MPPT Victron Charger 250/85
Shorepower	with cable
Auto positioning system	yes
Watermaker	EchoTec 50 LPH DC

## NAVIGATION

Compass	Plastimo
---------	----------



Electric compass	Raymarine
Depth sounder/log	Raymarine i50
Windset	Raymarine i60
VHF	Standard Horizon Eclips
VHF handheld	Icom IC-M36
Autopilot	Raymarine ACU-400, P70, double drives
Rudder angle indicator	At P70 autohelm display
Radar	Raymarine
GPS	yes
Radar/GPS/plotter	Raymarine E serie
AIS transponder	Raymarine 650
Radio receiver	HF Icom IC-78
EPIRB	GME, battery 2028

## EQUIPMENT

Storm blinds	yes
Cockpit cover	yes
Dodger	yes
Bimini	yes
Cockpit cushions	yes
Cockpit table	yes
Boarding ladder	stainless steel
Anchor	Rocna
Anchor chain	10 mm
Anchor 2	CQR Plough
Anchor chain	10 mm
Windlass	electrical Lofrans Tigres
Capstan	yes
Dinghy	rigid inflatable Caribe hypalon
Outboard	Suzuki 15 HP
Outboard support	yes



<b>Davits</b>	stainless steel
<b>Sea railing</b>	wire
<b>Grab rail (superstructure)</b>	stainless steel
<b>Lifejackets</b>	6x
<b>Safety harness</b>	2x
<b>Safety lines on deck</b>	yes
<b>Horn</b>	Hand held
<b>Binocular</b>	yes
<b>Radar reflector</b>	yes
<b>Fenders</b>	yes
<b>Mooring lines</b>	yes
<b>Spare parts</b>	yes
<b>Tools</b>	yes
<b>Radio</b>	Pioneer
<b>Cockpit speakers</b>	yes
<b>Clock - barometer</b>	yes
<b>Fire extinguisher</b>	6x

## RIGGING

<b>Rigging</b>	fractional
<b>Standing rigging</b>	Dyform 12mm
<b>Material mast</b>	aluminium
<b>Spreaders</b>	2 x 2
<b>Mainsail</b>	Doyle, new
<b>Battcars</b>	yes
<b>Fully battened mainsail</b>	yes
<b>Genoa</b>	North
<b>Genoa furler</b>	yes
<b>Code Zero</b>	Screecher, new, Doyle
<b>Stormjib</b>	yes
<b>Reefing System</b>	slabreefing





Boomvang	mechanical and tackle
Primary sheet winch	Lewmar
Secondary sheet winch	Lewmar
Halyard winches	Electric, Harken 53 ST 2S
Winchcovers	yes
Gennaker pole	aluminium





# LEOPARD 45





# LEOPARD 45

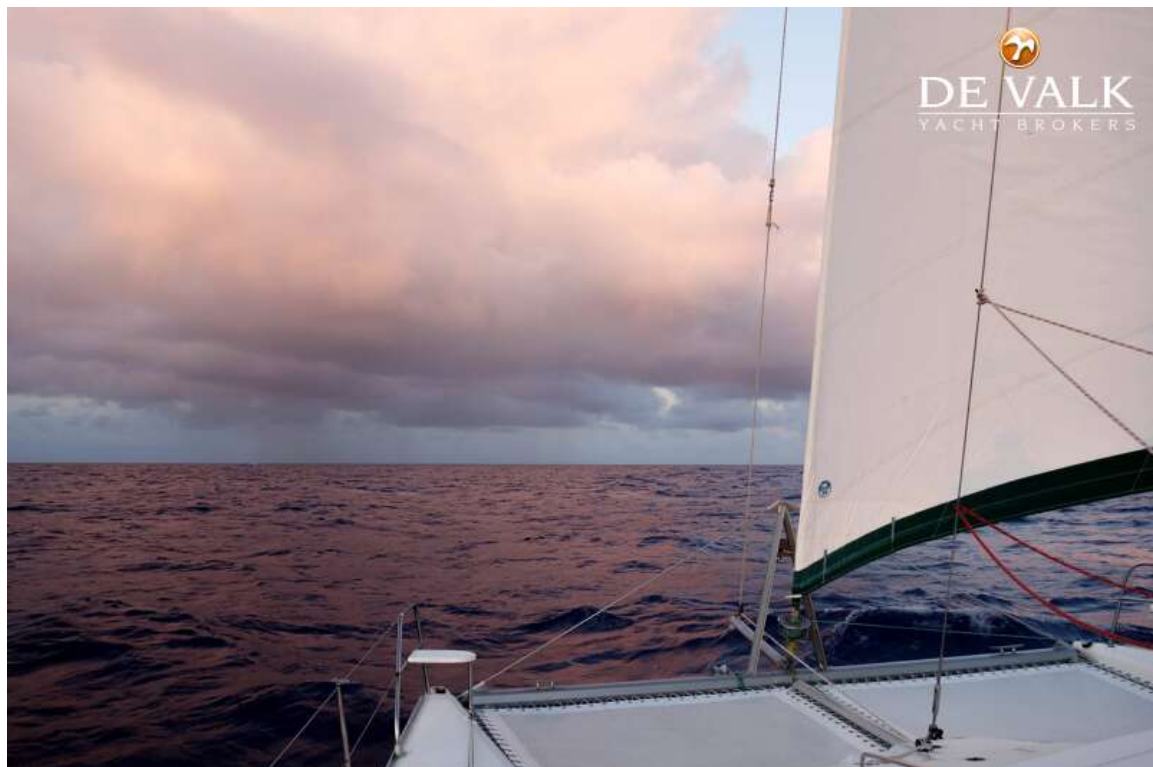


# LEOPARD 45





# LEOPARD 45

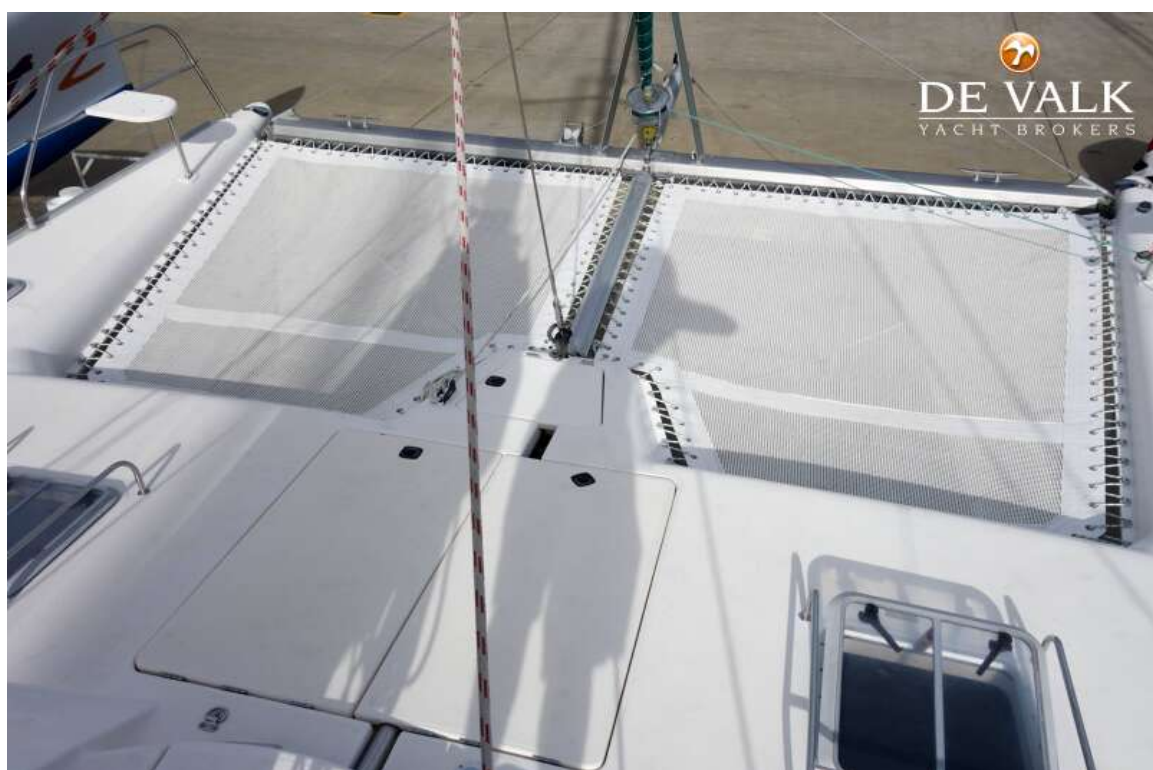


# LEOPARD 45





# LEOPARD 45

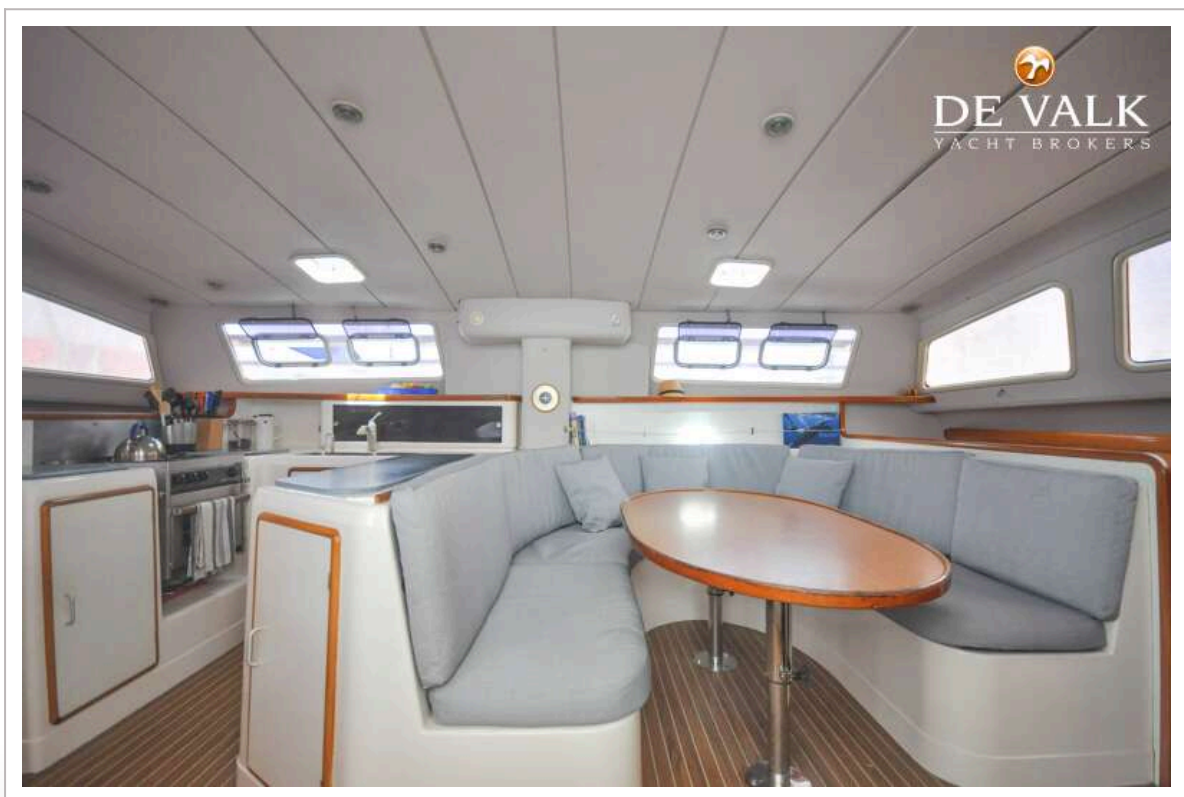
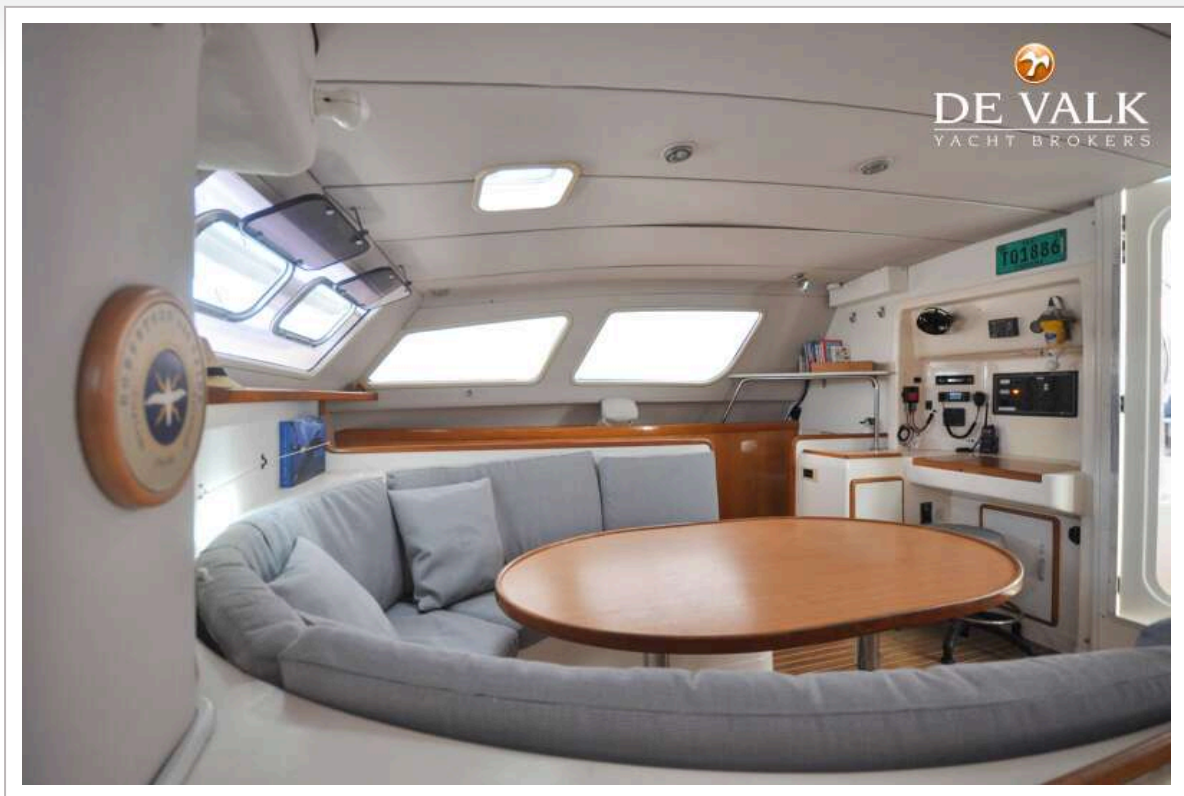




# LEOPARD 45

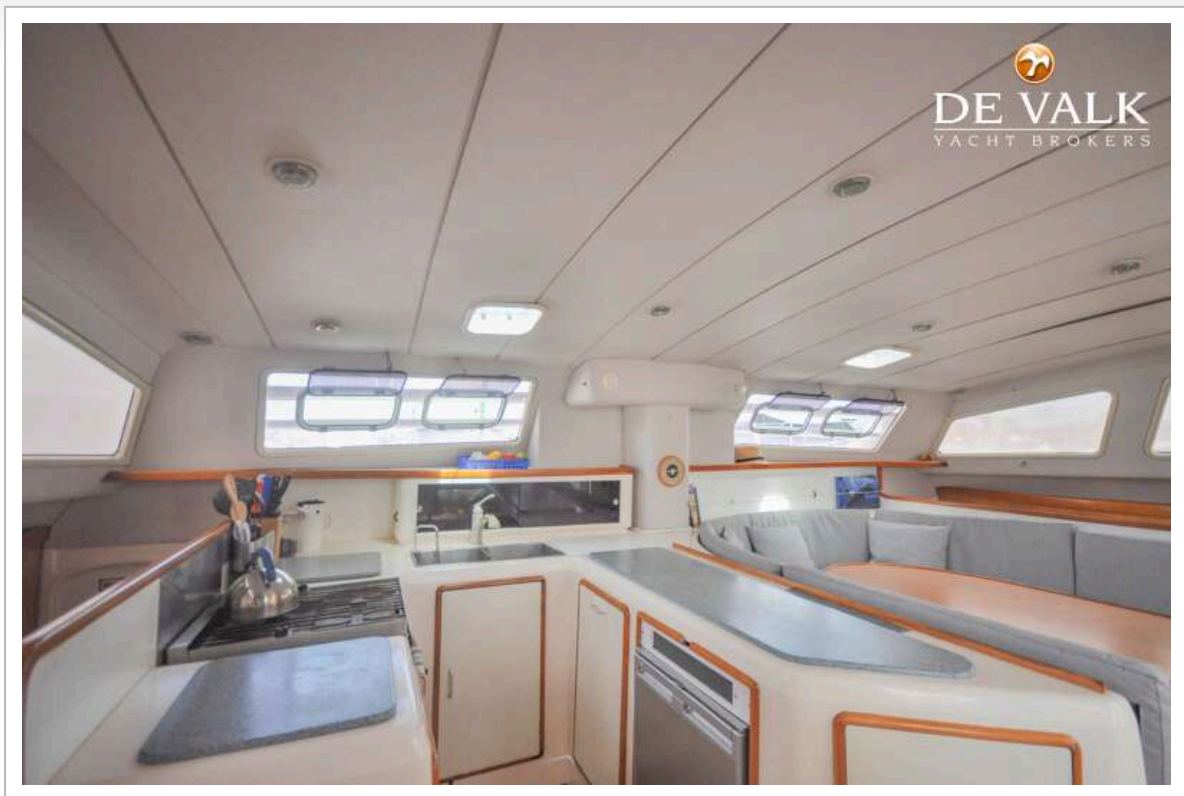


# LEOPARD 45

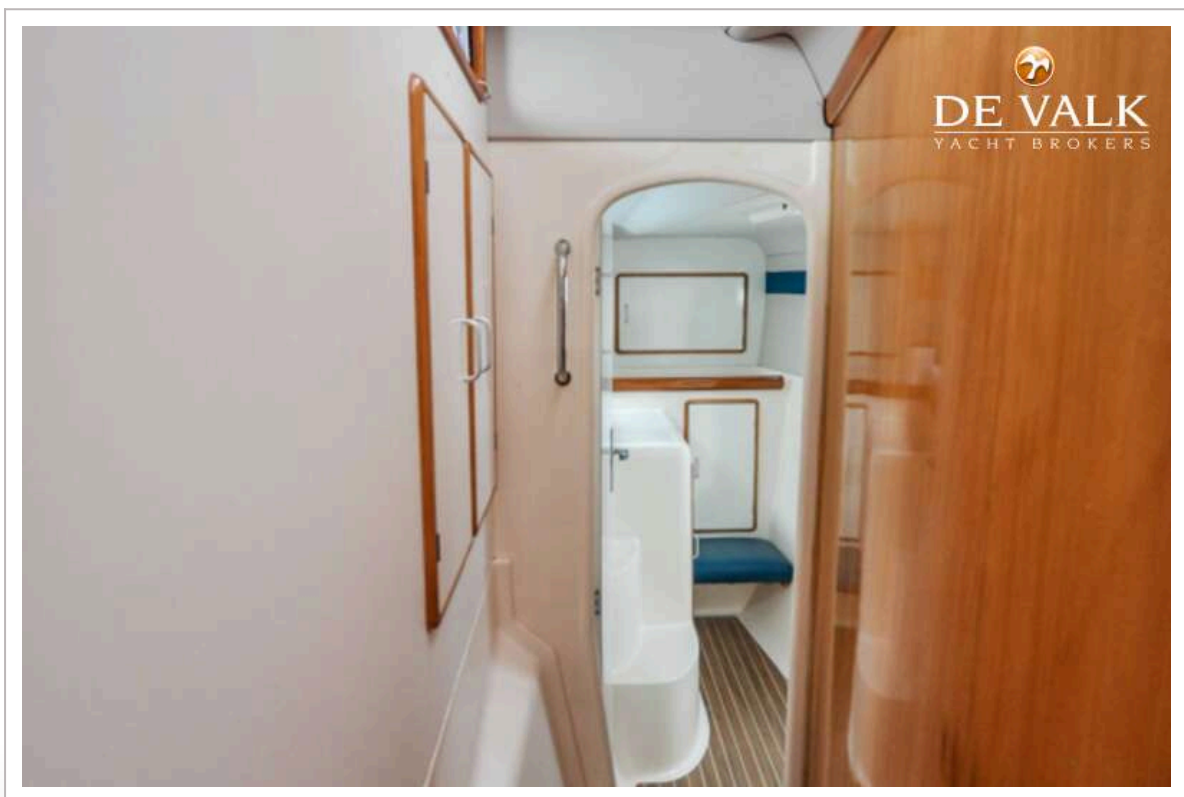
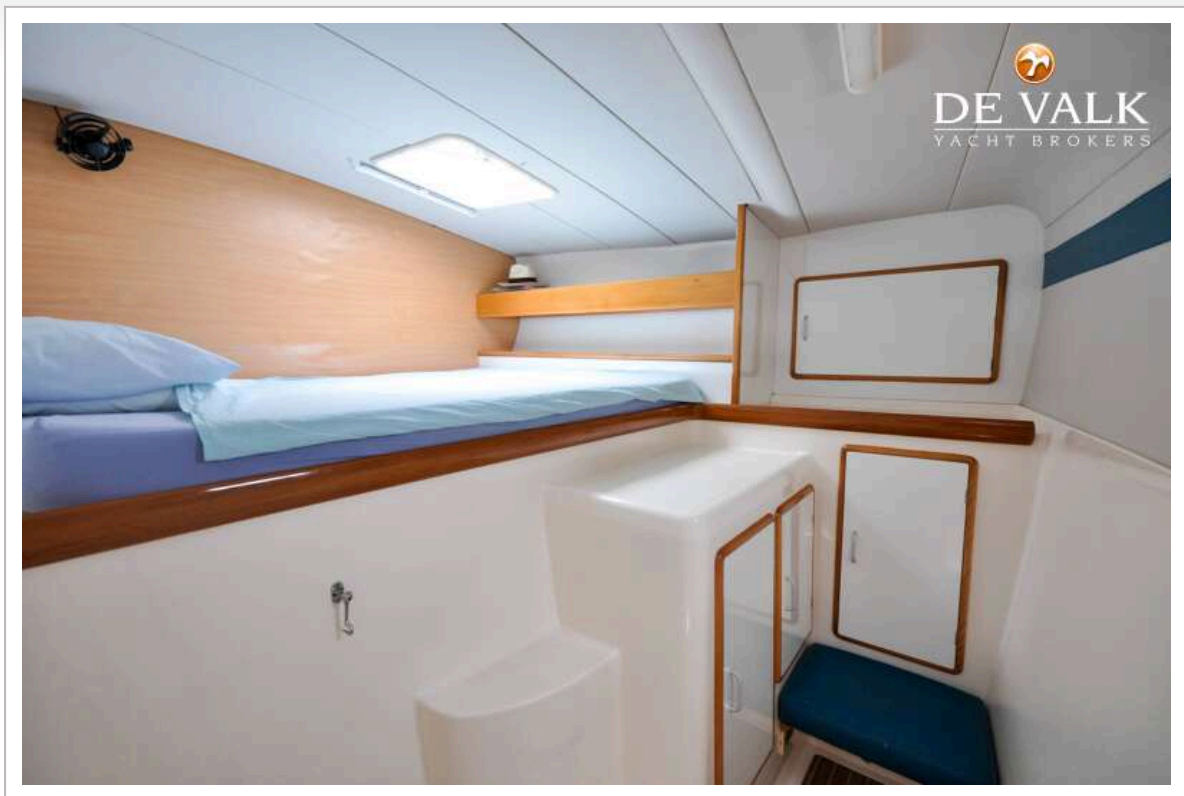




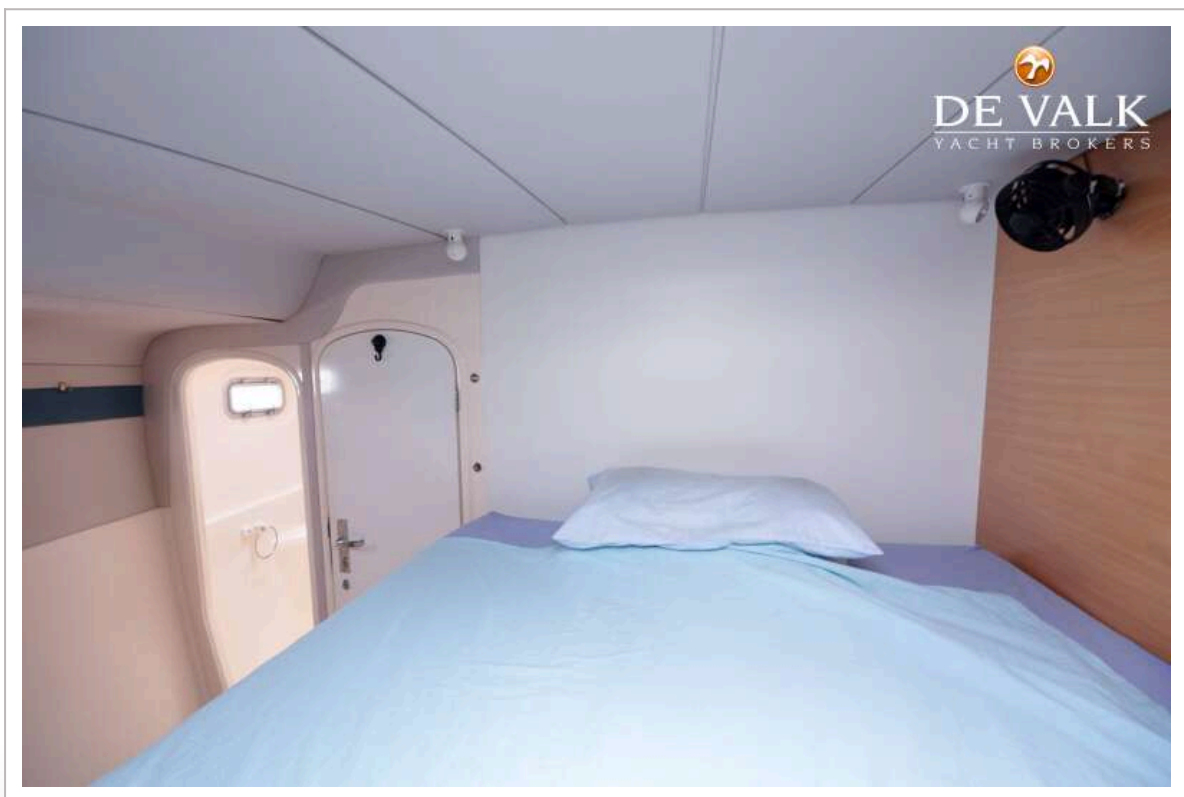
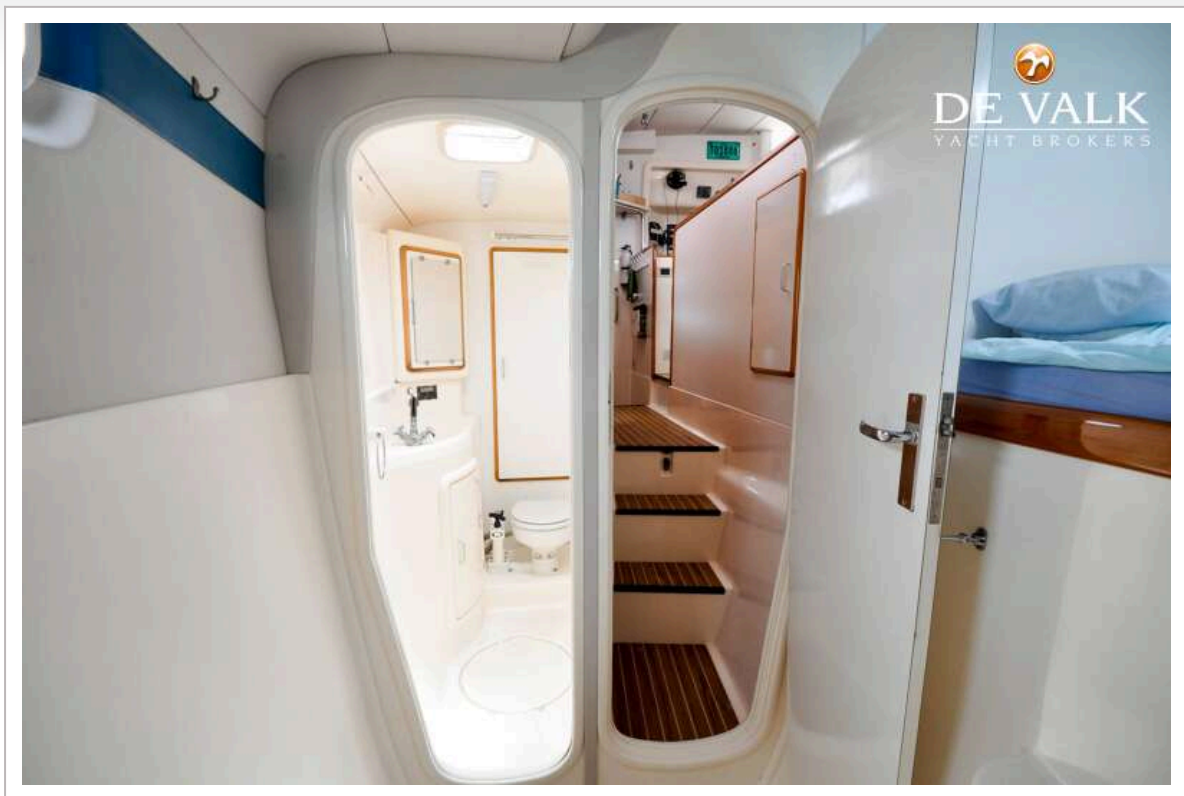
# LEOPARD 45



# LEOPARD 45



# LEOPARD 45



# LEOPARD 45

