



IJLSTERVLET 1150 OC



**DE VALK**  
YACHT BROKERS

# IJLSTERVLET 1150 OC

## BROKER'S COMMENTS

This IJlstervlet 1150 "Emir" was built in 2008 by Nowee Shipyard in Heeg, the Netherlands. With her good cruising characteristics due to the bilge keels, low clearance and CE- B, this is the perfect vessel for cruising the inland and coastal waters of Europe. With her teak interior, Island bed in the bow, toilet and separate shower, galley with dinette, saloon with steering position, sofa convertible to double bed, doors to the spacious open cockpit with door to the swimming platform. If you are looking for an open cockpit yacht, don't hesitate and come and see her in our sales marina!

*Reinier van der Wolf*

## SPECIFICATIONS

<b>Dimensions</b>	11.85 x 3.95 x 1.00 (m)	<b>Builder</b>	Nowee Shipyard - Heeg
<b>Built</b>	2008	<b>Cabins</b>	1
<b>Material</b>	Steel	<b>Berths</b>	6
<b>Engine(s)</b>	1 x Volvo Penta D3-110I-C diesel	<b>Hp/Kw</b>	110.00 (hp), 80.96 (kw)
<b>Asking price</b>	sold (VAT )	<b>Lying</b>	at sales office

## CONTACT

<b>Sales office</b>	De Valk Monnickendam B.V.	<b>Telephone</b>	+31 (0)299 65 63 50
<b>Address</b>	Hoogedijk 6 1145 PM Katwoude NL	<b>E-mail</b>	monnickendam@devalk.nl

## DISCLAIMER

These particulars are given in good faith as supplied but cannot be guaranteed.



## GENERAL

Model	IJLSTERVLET 1150 OC
Type	motor yacht
LOA (m)	11,85
LWL (m)	10,10
Beam (m)	3,95
Draft (m)	1,00
Air draft (m)	2,40
Headroom (m)	2,10
Year built	2008
Launched	2008
Builder	Nowee Shipyard - Heeg
Country	The Netherlands
Designer	Nowee Shipyard - Heeg
Displacement (t)	13,75
CE norm	B
Hull material	steel
Hull colour	blue
Hull thickness (mm)	6
Hull shape	round-bilged
Bilge keels	yes
Superstructure material	steel
Superstructure (mm)	4
Deck plate thickness (mm)	4
Rubbing strake	fender rope
Deck material	steel
Deck finish	non-skid paint
Superstructure deck finish	non-skid paint
Cockpit deck finish	teak
Antifouling (year)	yes
Window frame	aluminium



Window material	tempered glass
Deckhatch	3x Gebo
Insulation	glasswool
Mast can be lowered	manual
Fuel tank (litre)	steel - 480
Level indicator (fuel tank)	Volvo Penta
Freshwater tank (litre)	stainless steel - 520
Level indicator (freshwater)	Volvo Penta
Blackwater tank (litre)	stainless steel - 200
Level indicator (blackwater)	Volvo Penta
Blackwater tank extraction	pump
Wheel steering	hydraulic
Inside helm position	yes
Emergency tiller	yes
More info on hull	Anodes in 2023 vervangen
Extra info	Fueltank: A bottom-mustering of the diesel tank was carried out in August 2024 with the result that no indication of any bacteria was present in the tank.

## ACCOMMODATION

Cabins	1
Berths	6
Interior	teak
Floor	teak and holly
Saloon	yes
Headroom saloon (m)	2,10
Heating	diesel ducted hot air Webasto
Dinette to convert into berth	2 x
Convertible berth	in saloon - 2 x
Opening door to cockpit	yes
Galley	yes
Countertop	corian



Sink	stainless steel
Cooker	diesel Wallas
Microwave/oven combi	Daewoo
Fridge	with freezer compartment - Isothem
Hot water system	220V + engine - Isothem Basic 40 l.
Water pressure system	electrical
Crockery	yes
Owners cabin	French bed
Bed length (m)	2.00
Wardrobe	drawers and shelves
Bathroom	shared
Toilet	shared
Toilet system	electric
Wash basin	in the bathroom
Shower	shared

## MACHINERY

No of engines	1
Make	Volvo Penta
Type	D3-110I-C
HP	110
kW	80.96
Fuel	diesel
Year installed	2008
Maximum speed (kn)	7,5
Cruising speed (kn)	6
Consumption (l/hr)	3
Engine hours	3507
Engine cooling system	freshwater heat exchanger
Drive	shaft
Shaft seal	Volvo seal



Engine controls	bowden cable
Gearbox	mechanical - Hurth ZF 45-1
Bowthruster	electric - SidePower + remote   afstandbediening   Fernbedienung
Exhaust	watercooled
Thrust bearing	+ Homokinetic
Propeller type	fixed
Propeller blades	4
Propeller shaft material	stainless steel
Shaft lubrication	water
Manual bilge pump	yes
Electric bilge pump	yes
Bilge alarm	yes
Start battery	1x Varta 12v/ 74 Ah
Service battery	2x 230 Ah (aug. 2024)
Bowthruster battery	1x RedTop (aug. 2024)
Battery charger/inverter	Phoenix Multi Plus 12 1600 70
Shorepower	with cable
Extra info	Victron, galvanic diode isolator GDI16
Extra info	yes

## NAVIGATION

Electric compass	Raymarine ST60+
Depth sounder	VDO
Log	VDO
VHF	Raymarine A80 (2023)
Rudder angle indicator	Volvo Penta
Radar/GPS/plotter	Raymarine Axiom '12 (2023)
Wifi antenna	yes
Electronis chart(s)	yes
Camera	rear view



Navigation lights	yes
Extra info	Yachtsense Link Marine cloud router (March 2023)

## EQUIPMENT

Cockpit cover	winter and summer
Window cover	yes
Cockpit cushions	yes
Cockpit table	yes
Bathing platform	with teak
Boarding ladder	stainless steel
Transom door	yes
Deck shower	yes
Anchor	Pool
Anchor chain	30m. (8mm)
Windlass	manual
Sea railing	stainless steel
Grab rail (superstructure)	stainless steel
Wiper	- 3x
Horn	electric
Binocular	yes
Fenders	yes
Mooring lines	yes
TV	Samsung
Radio-cd player	JVC
Speakers in salon	yes
Fire extinguisher	yes
Extinguisher in engine room	yes
Extra info	FM200 Extinguisher gas 2x 1.5 kg (2023)







# IJLSTERVLET 1150 OC



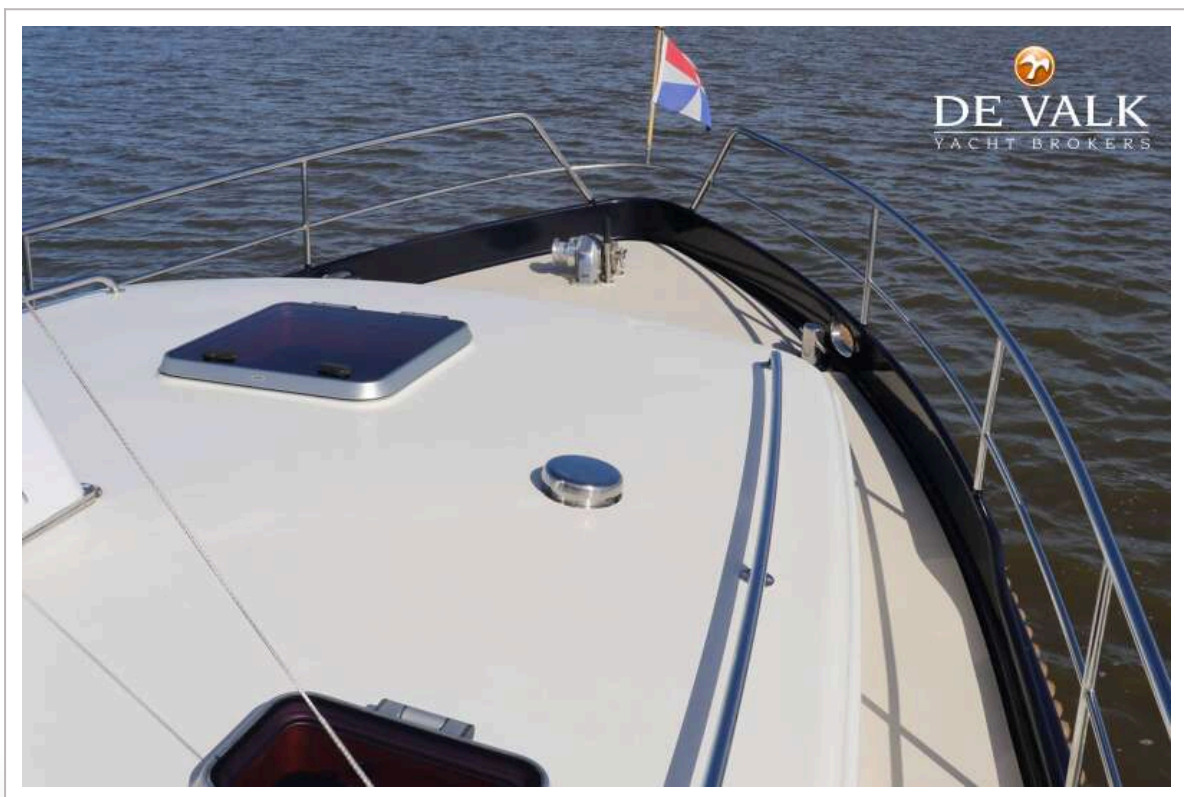




# IJLSTERVLET 1150 OC

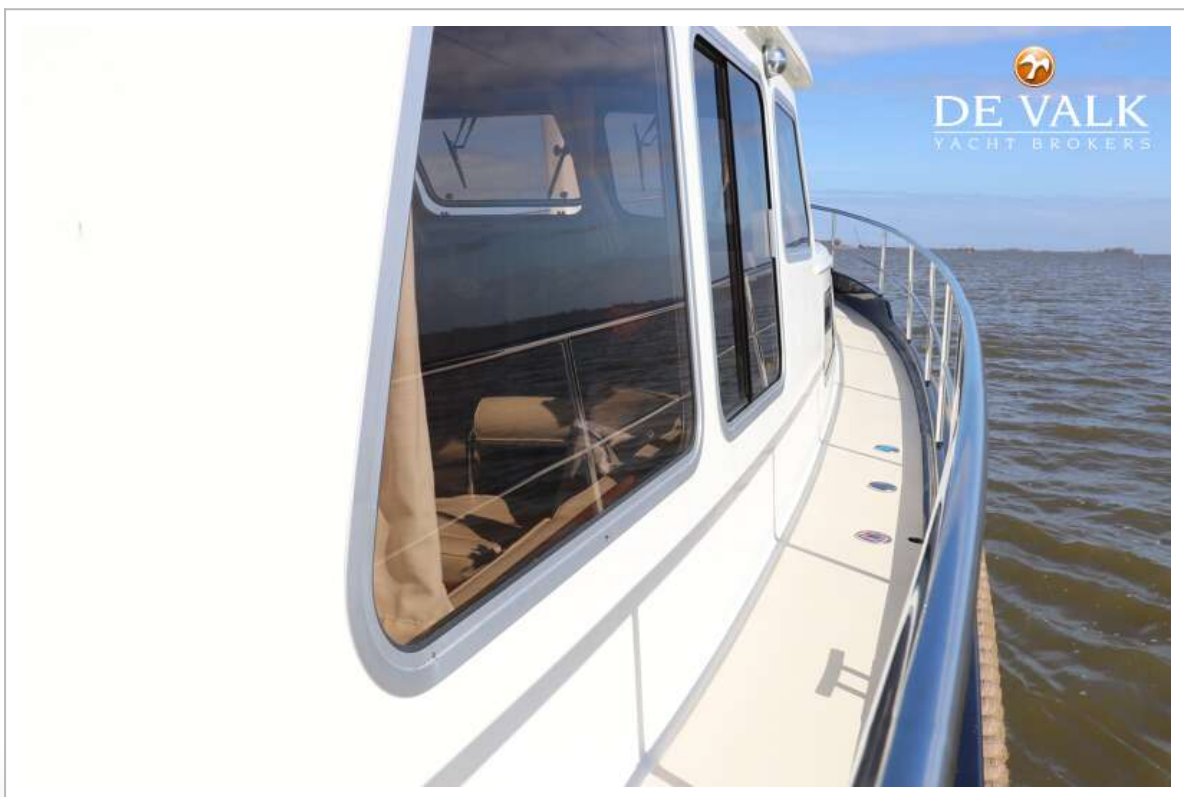


# IJLSTERVLET 1150 OC

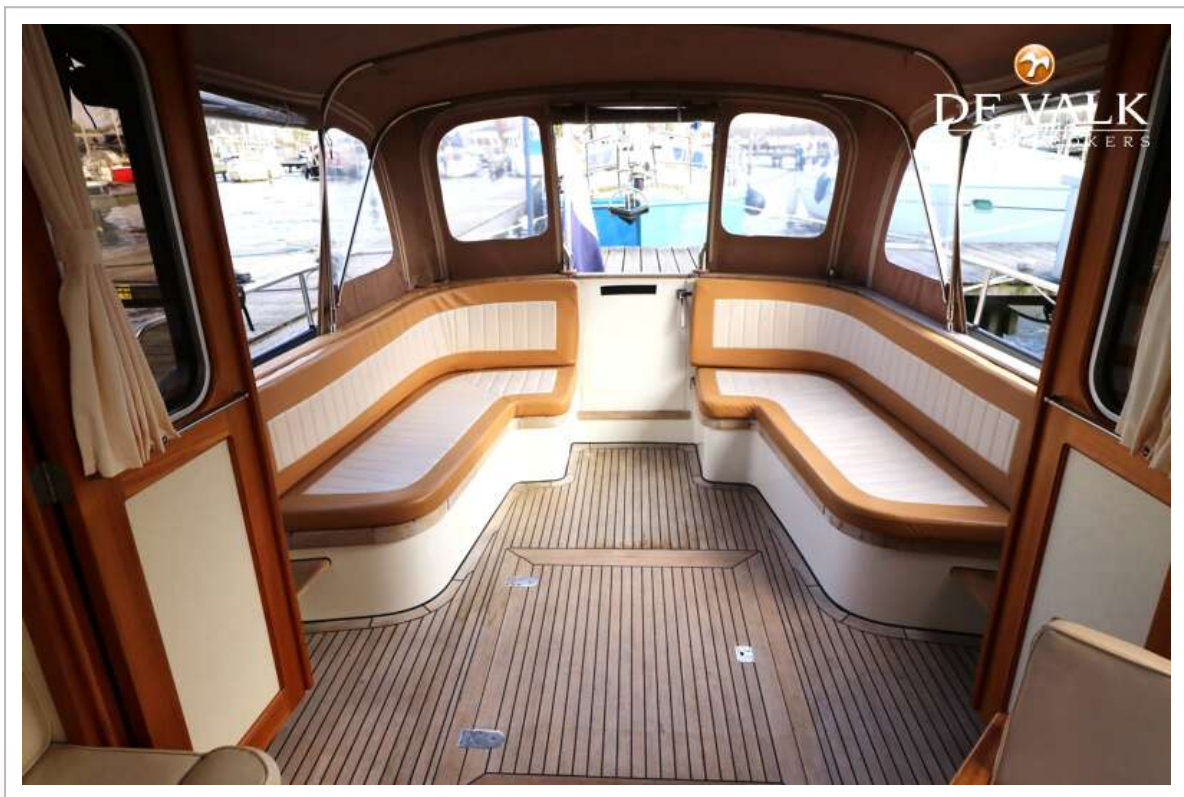
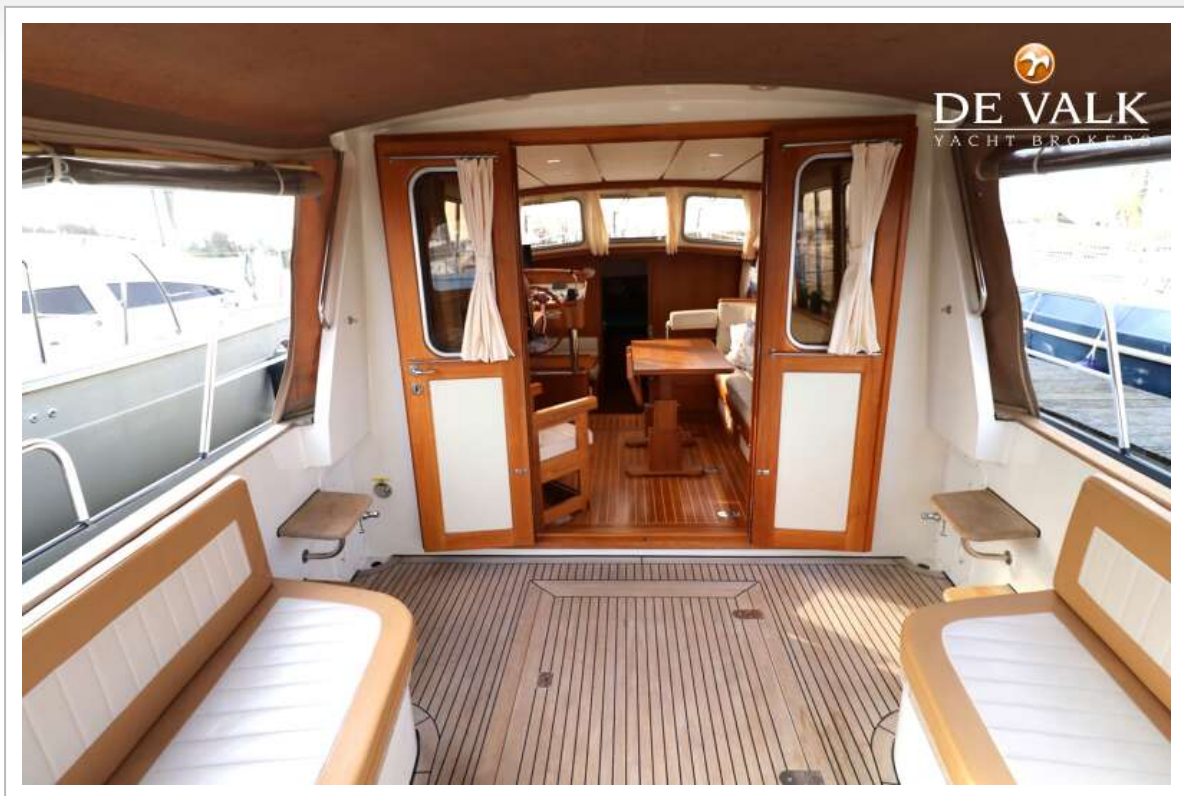
















# IJLSTERVLET 1150 OC

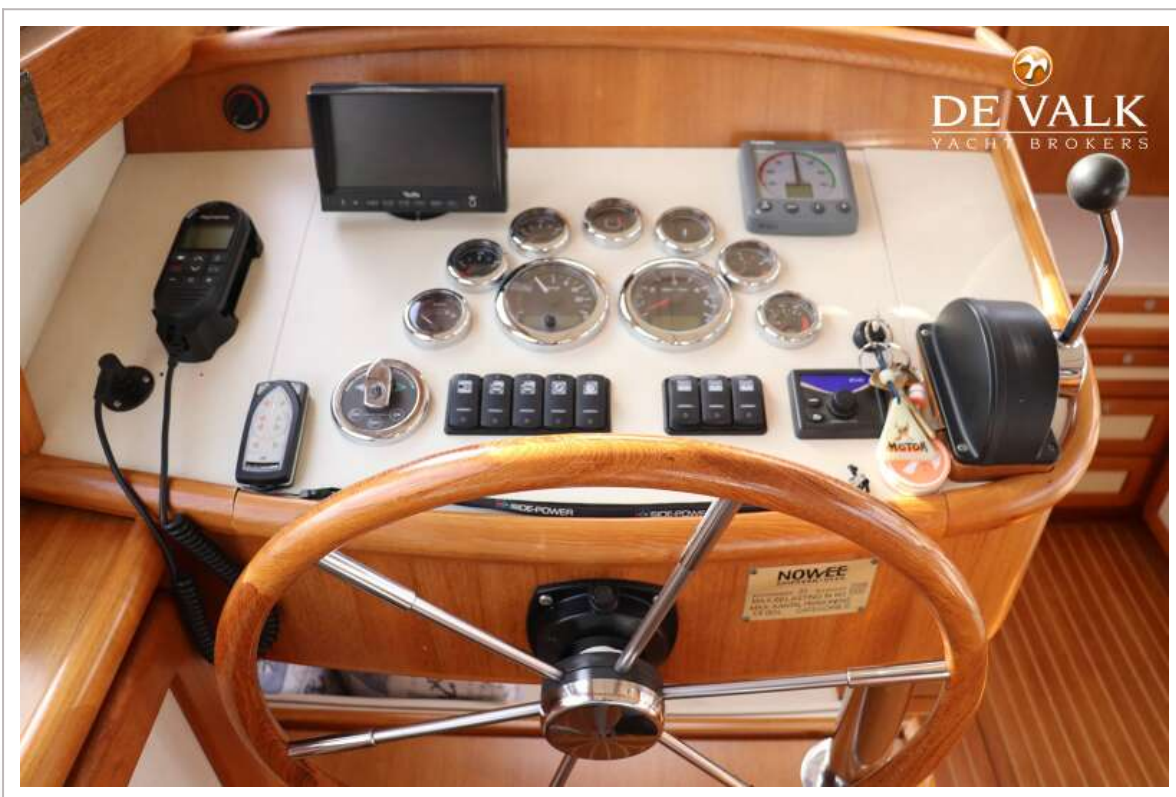


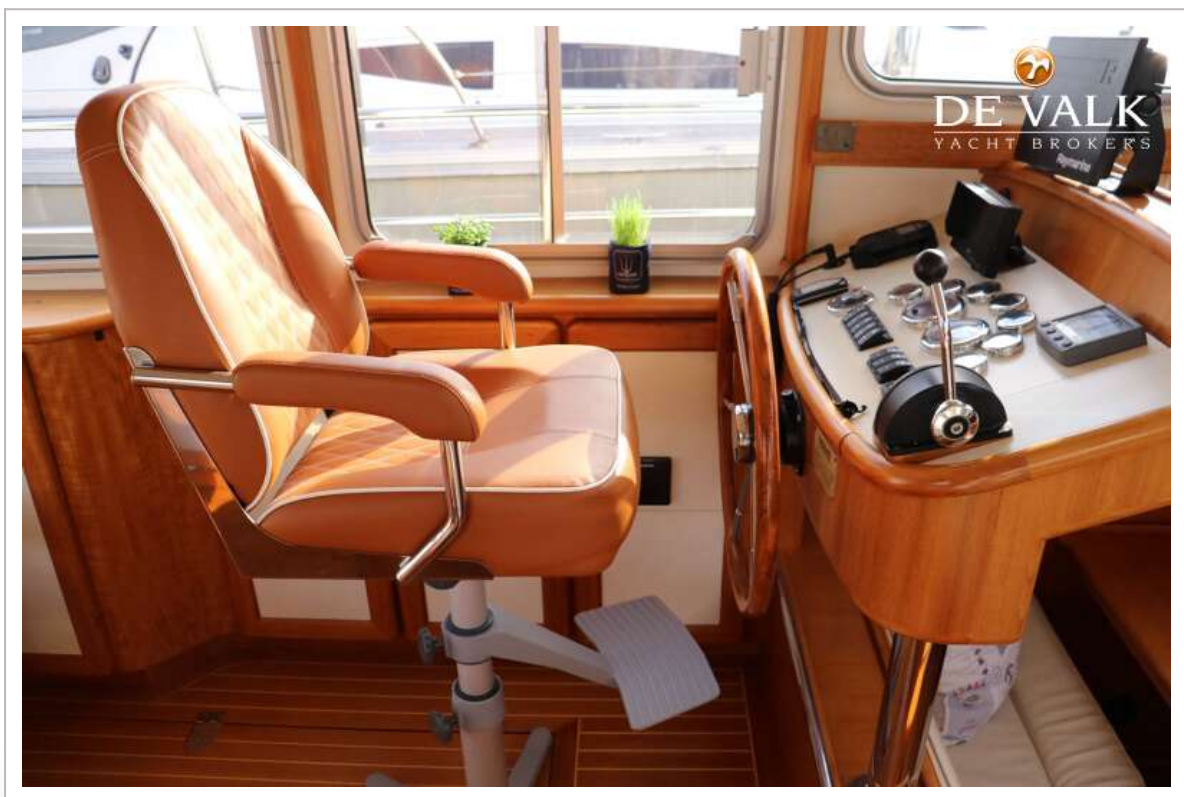
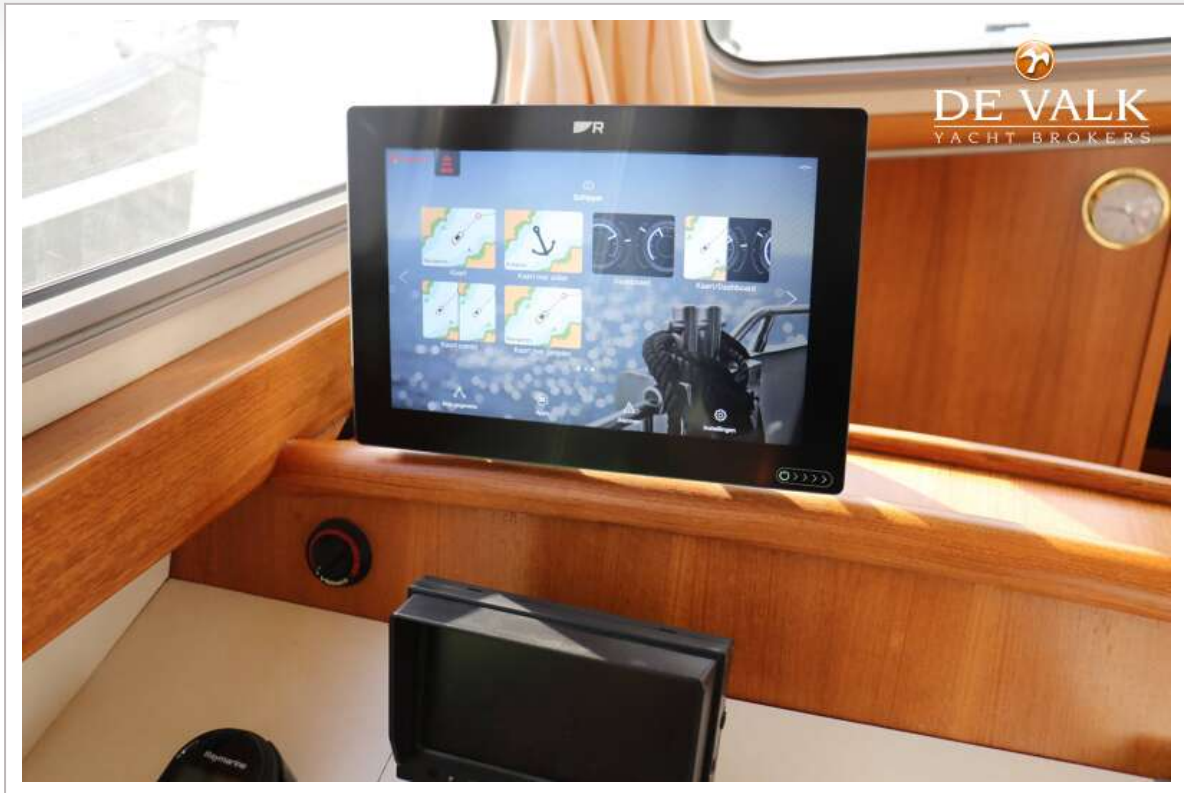










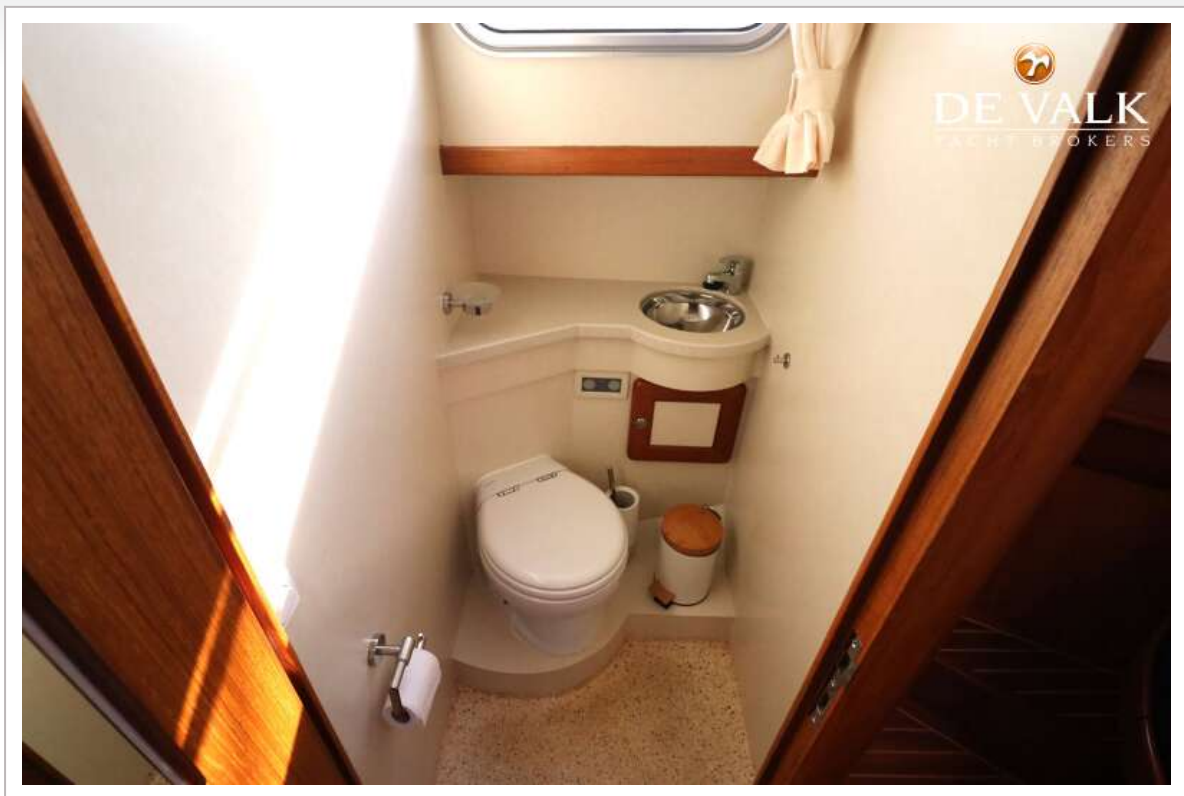
















  
**DE VALK**  
YACHT BROKERS



  
**DE VALK**  
YACHT BROKERS

