



DE VALK
YACHT BROKERS



SWAN 47 MKII



DE VALK
YACHT BROKERS

SWAN 47 MKII

BROKER'S COMMENTS

"This SWAN 47 MKII is preciously maintained and offers a harmonious blend of performance and comfort. With its classic line, this Swan's design includes teak exteriors and wood interiors with two cabins and galley. Equipped with a Yanmar engine, Raymarine navigation amenities and a set of sails, this SWAN 47 MKII is poised for thrilling adventures on the open seas. Don't miss the opportunity to experience the epitome of sailing excellence with this amazing sailing boat"

Yume Pellegrino

SPECIFICATIONS

Dimensions	14,58 x 4,19 x 1,80 / 2,90 (m)	Builder	Nautor Swan
Built	1982	Cabins	2
Material	GRP	Berths	4
Engine(s)	1 x Yanmar 4Jh4-HTE diesel	Hp/Kw	110 (hp), 80,96 (kw)
Asking price	EUR 175.000 (vat: paid)	Lying	contact Antibes

CONTACT

Sales office	De Valk Antibes	Telephone	+33 492 91 0202
Address	2, Avenue de Verdun 06600 Antibes France	Fax	+33 (0)492 91 0301
		E-mail	antibes@devalk.nl

DISCLAIMER

These particulars are given in good faith as supplied but cannot be guaranteed and cannot be used for contracts.



GENERAL

Model	SWAN 47 MKII
Type	sailing yacht
LOA (m)	14,58
Beam (m)	4,19
Draft (m)	2,90
Draft min (m)	1,80
Year built	1982
Builder	Nautor Swan
Country	Finland
Designer	Sparkman & Stephens
Displacement (t)	15,5
CE norm	A
Hull material	GRP
Hull colour	white
Hull shape	V-shaped hull
Keel type	centreboard
Superstructure material	GRP
Deck material	GRP
Deck finish	teak
Superstructure deck finish	teak
Cockpit deck finish	teak
Dorades	yes
Deckhatch	yes
Fuel tank (litre)	200
Level indicator (fuel tank)	yes
Freshwater tank (litre)	350
Level indicator (freshwater)	yes
Wheel steering	yes
Outside helm position	yes



ACCOMMODATION

Cabins	2
Berths	4
Interior	nut
Layout	yes
Floor	wood
Aft deck	yes
Saloon	yes
Headroom saloon (m)	2
Chart table	yes
Dinette to convert into berth	yes
Opening door to cockpit	yes
Opening door to aft deck	yes
Galley	yes
Countertop	wood
Sink	stainless steel
Cooker	calor gas
Oven	yes
Fridge	yes
Hot water system	yes
Water pressure system	yes
Manual and/or foot pump	yes
Owners cabin	twin single
Bed length (m)	2
Wardrobe	drawers and shelves
Bathroom	en suite
Toilet	en suite
Toilet system	manual
Wash basin	in the bathroom
Shower	en suite



Guest cabin 1	twin single
Bed length (m)	2
Wardrobe	drawers and shelves
Bathroom	en suite
Toilet	en suite
Toilet system	manual
Wash basin	in the bathroom
Shower	en suite

MACHINERY

No of engines	1
Make	Yanmar
Type	4Jh4-HTE
HP	110
kW	80.96
Fuel	diesel
Engine cooling system	seawater
Engine controls	yes
Gearbox	hydraulic
Exhaust	watercooled
Propeller type	fixed
Propeller blades	yes
Propeller shaft material	stainless steel
Manual bilge pump	yes
Electric bilge pump	yes
Batteries	yes
Start battery	yes
Battery monitor	yes
Battery charger/inverter	yes
Shorepower	with cable



NAVIGATION

Compass	yes
Multi control display	Furuno
Depth sounder/log	Raymarine ST60+
Windset	Raymarine ST60+
VHF	yes
Autopilot	Raytheon ST7000+
Plotter/GPS	Furuno GP-32
Electronic chart(s)	yes
Radio receiver	yes
Navigation lights	yes

EQUIPMENT

Storm blinds	yes
Sprayhood	yes
Bimini	yes
Boarding ladder	yes
Gangway	yes
Anchor	yes
Anchor chain	60m
Capstan	yes
Grab rail (superstructure)	stainless steel
Fenders	yes
Mooring lines	yes
Radio	Pioneer MOSFET 45wx4
Clock - barometer	yes

RIGGING



Rigging	sloop
Material mast	aluminium
Spreaders	2
Mainsail	yes
Mainsail cover	yes
Battcars	yes
Fully battened mainsail	yes
Jib	yes
Genoa	yes
Genoa furler	yes
A-symetric spi	yes
Boomvang	mechanical and tackle
Primary sheet winch	yes
Secondary sheet winch	yes
Genoa sheetwinches	yes



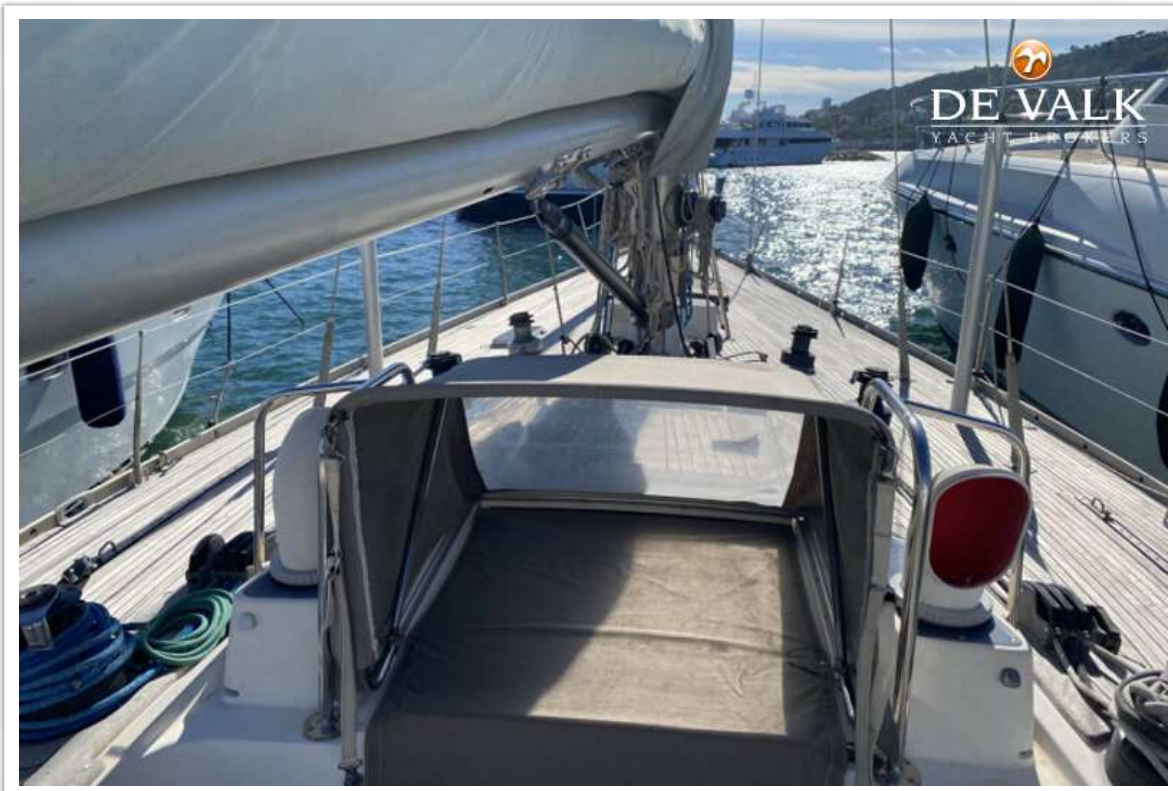
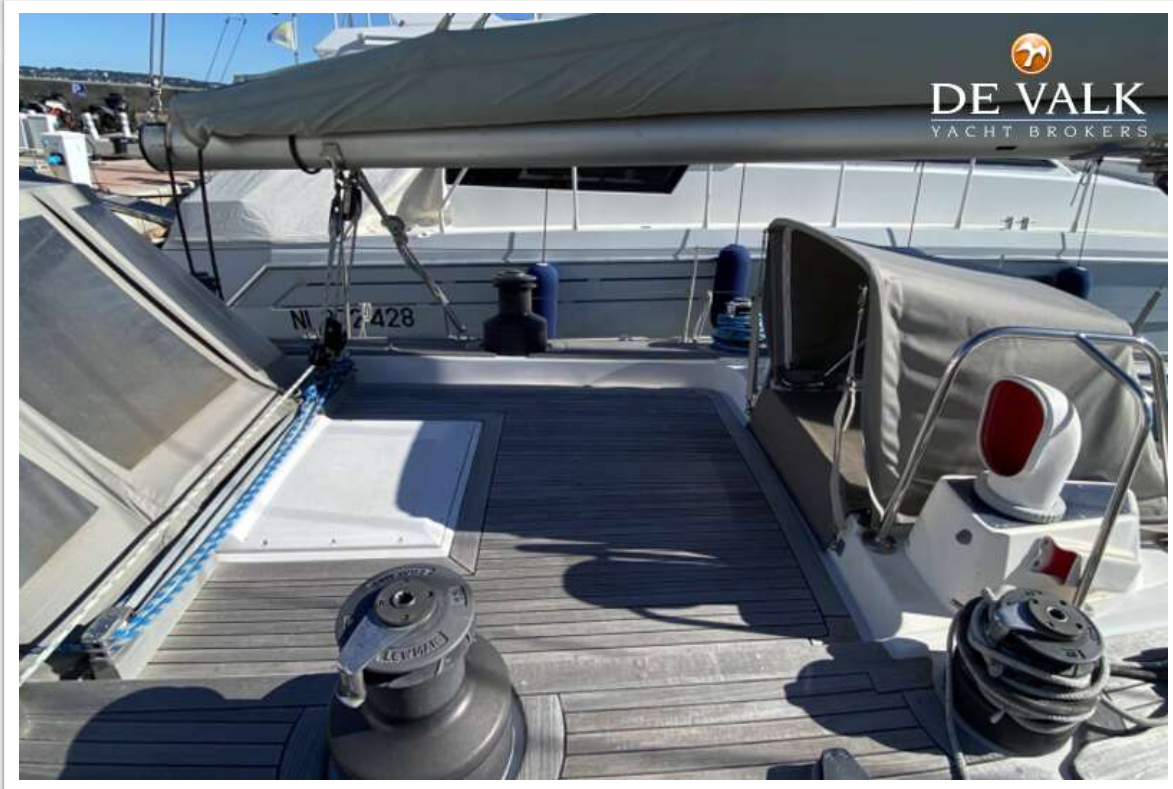
SWAN 47 MKII



SWAN 47 MKII



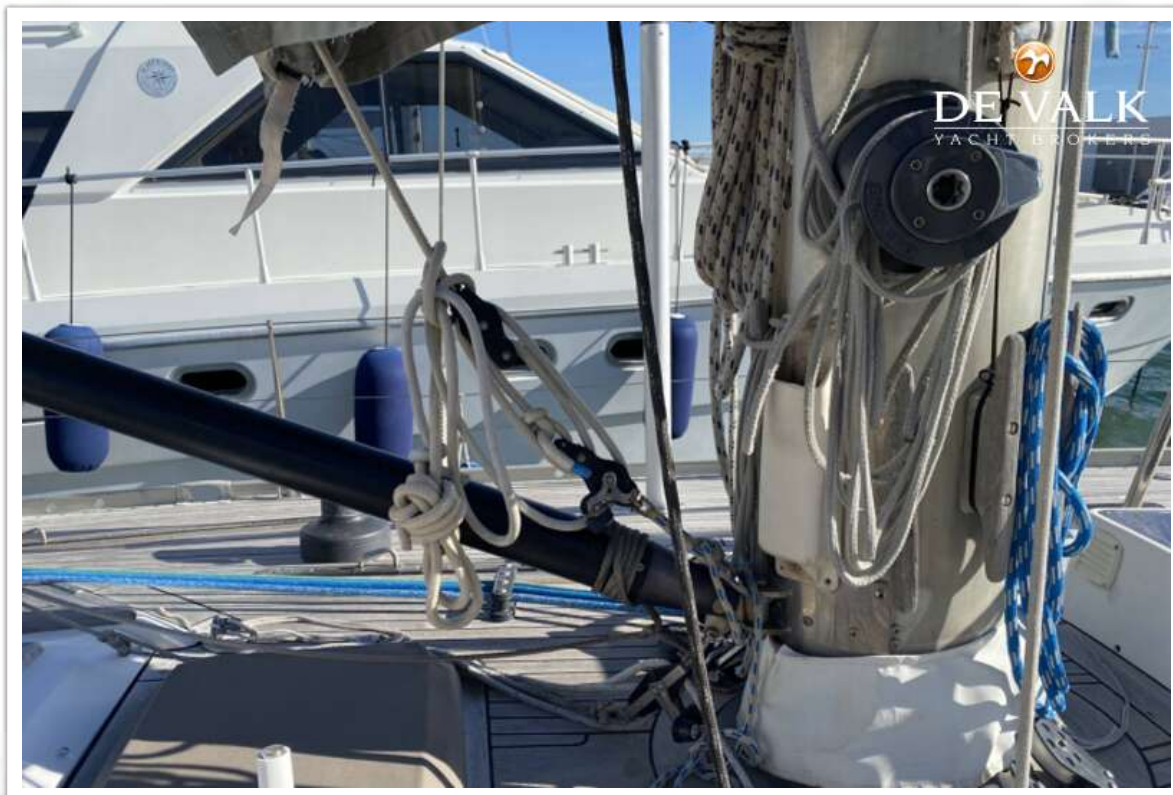
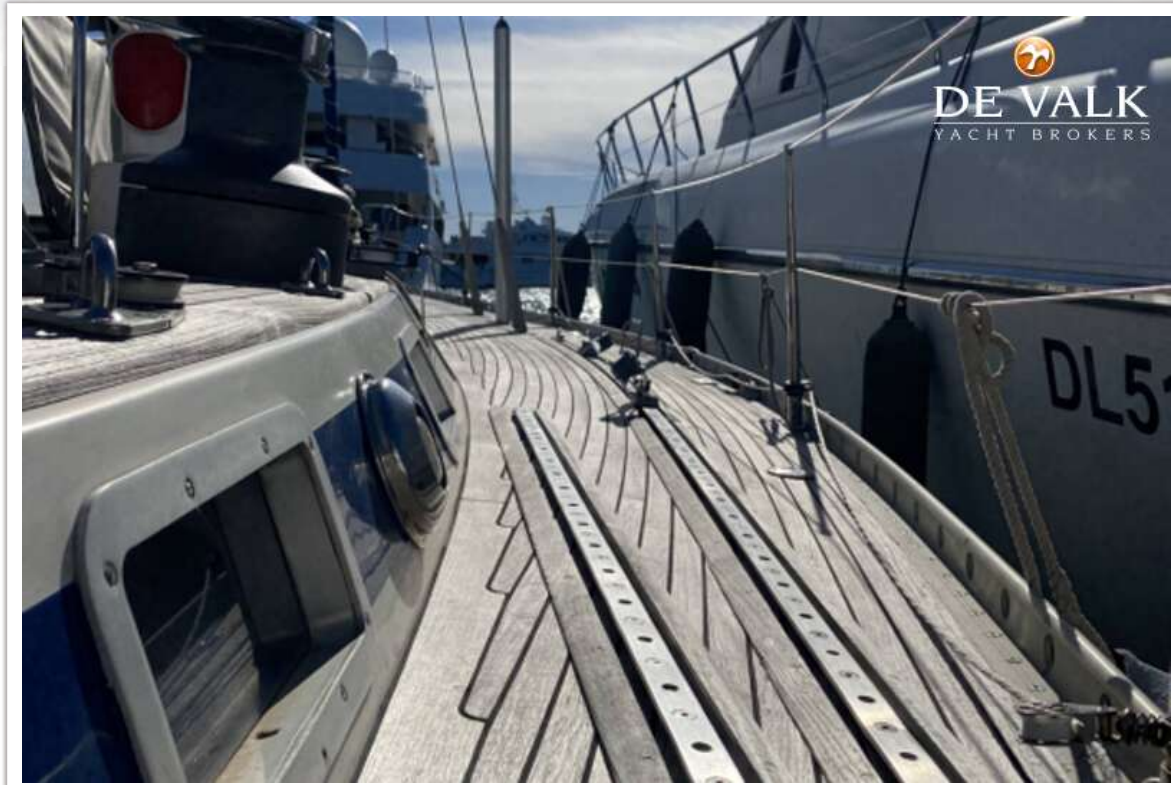
SWAN 47 MKII



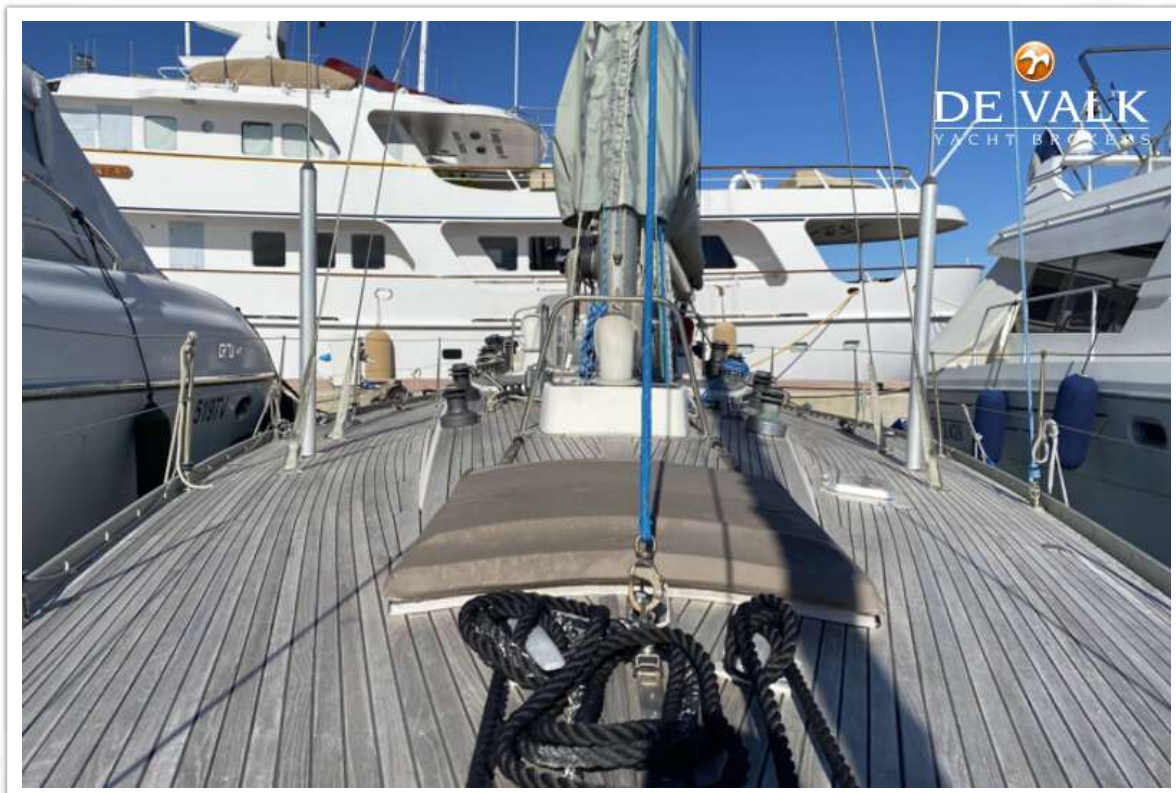
SWAN 47 MKII



SWAN 47 MKII



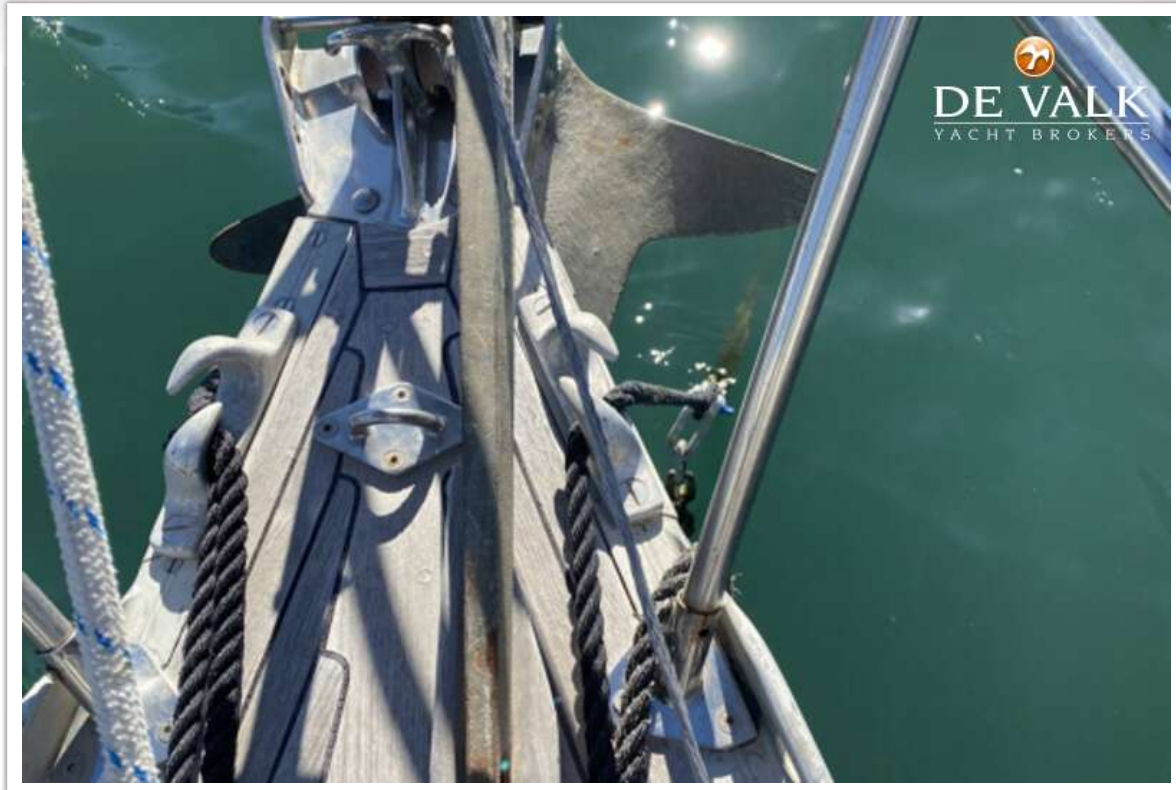
SWAN 47 MKII



SWAN 47 MKII



SWAN 47 MKII



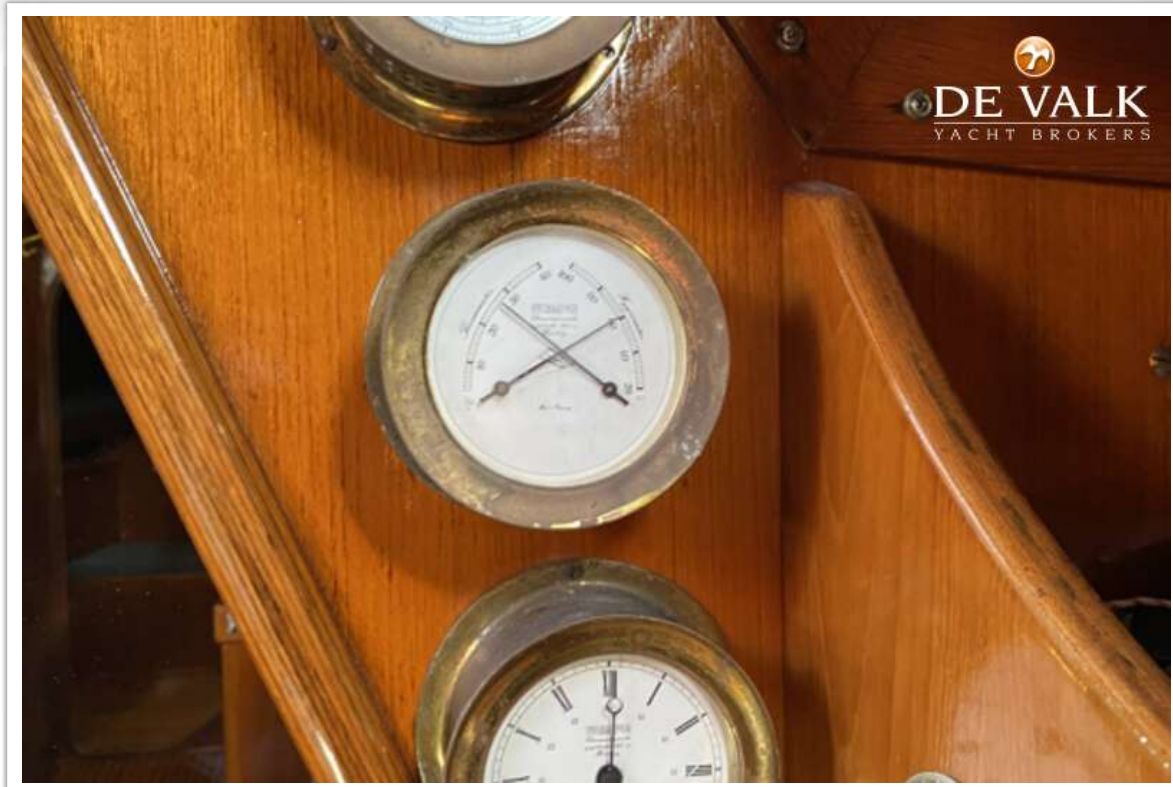
SWAN 47 MKII



SWAN 47 MKII



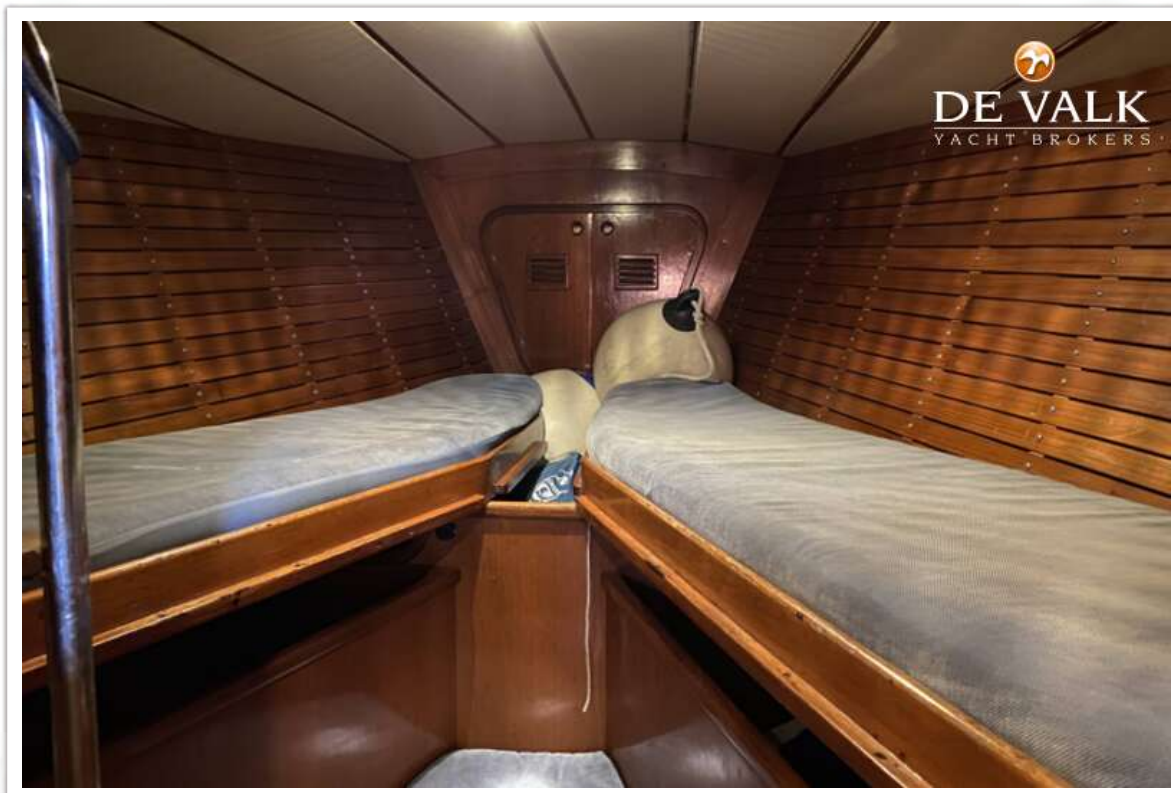
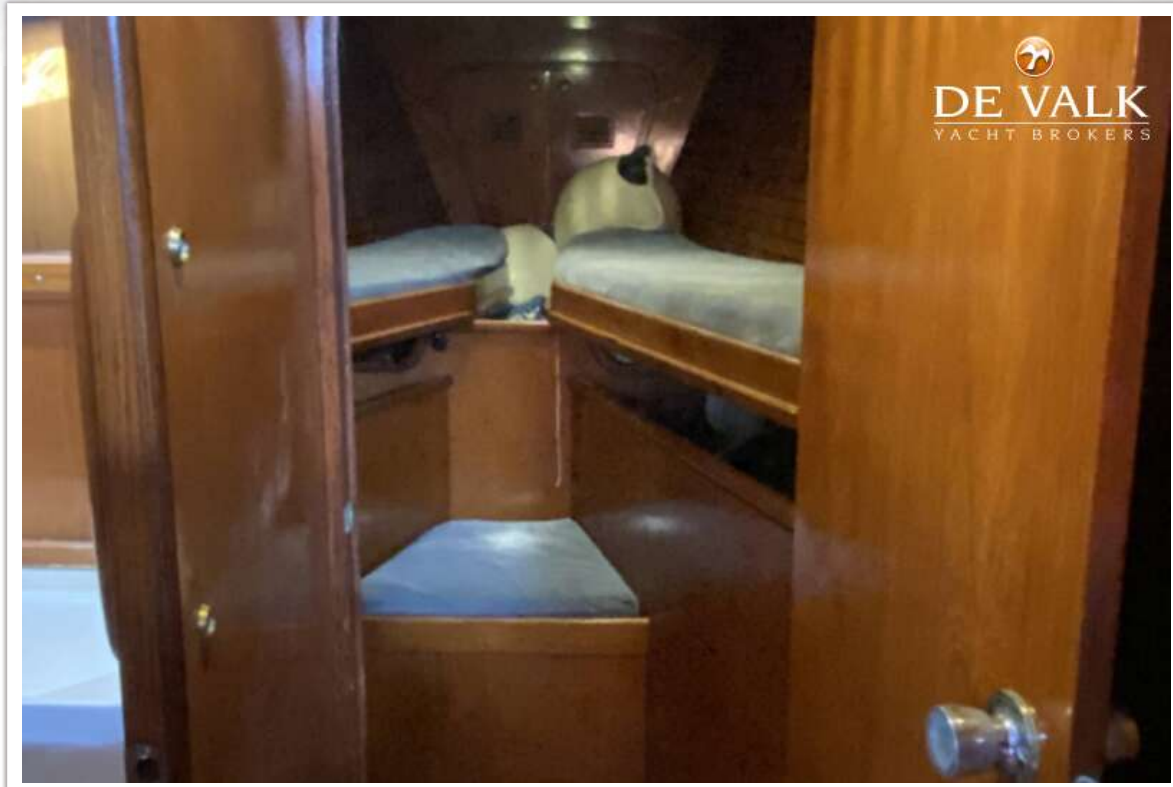
SWAN 47 MKII



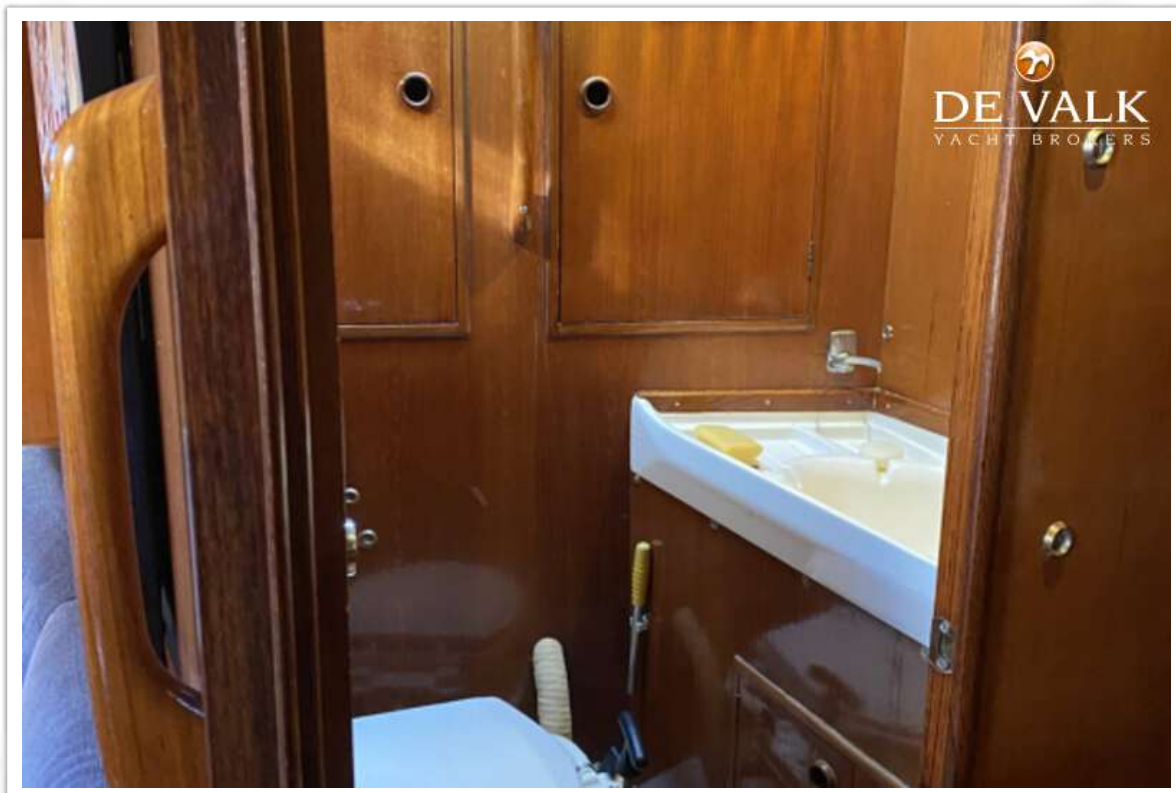
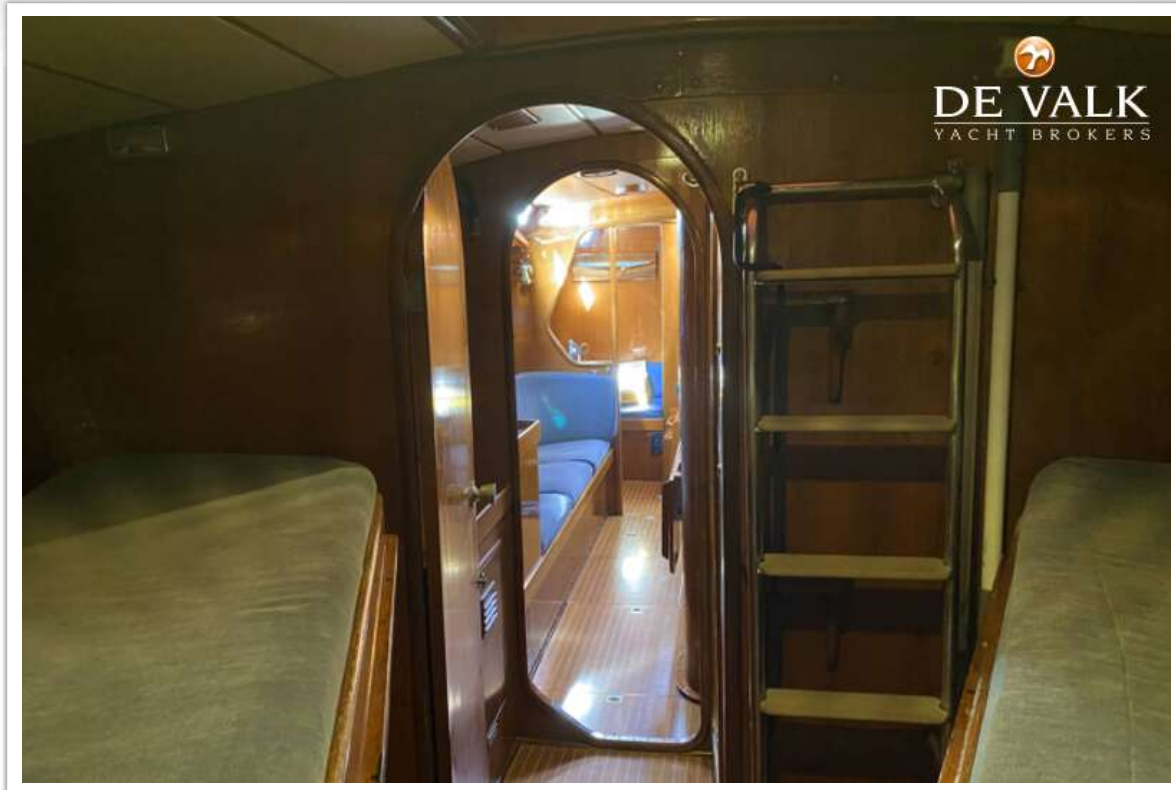
SWAN 47 MKII



SWAN 47 MKII



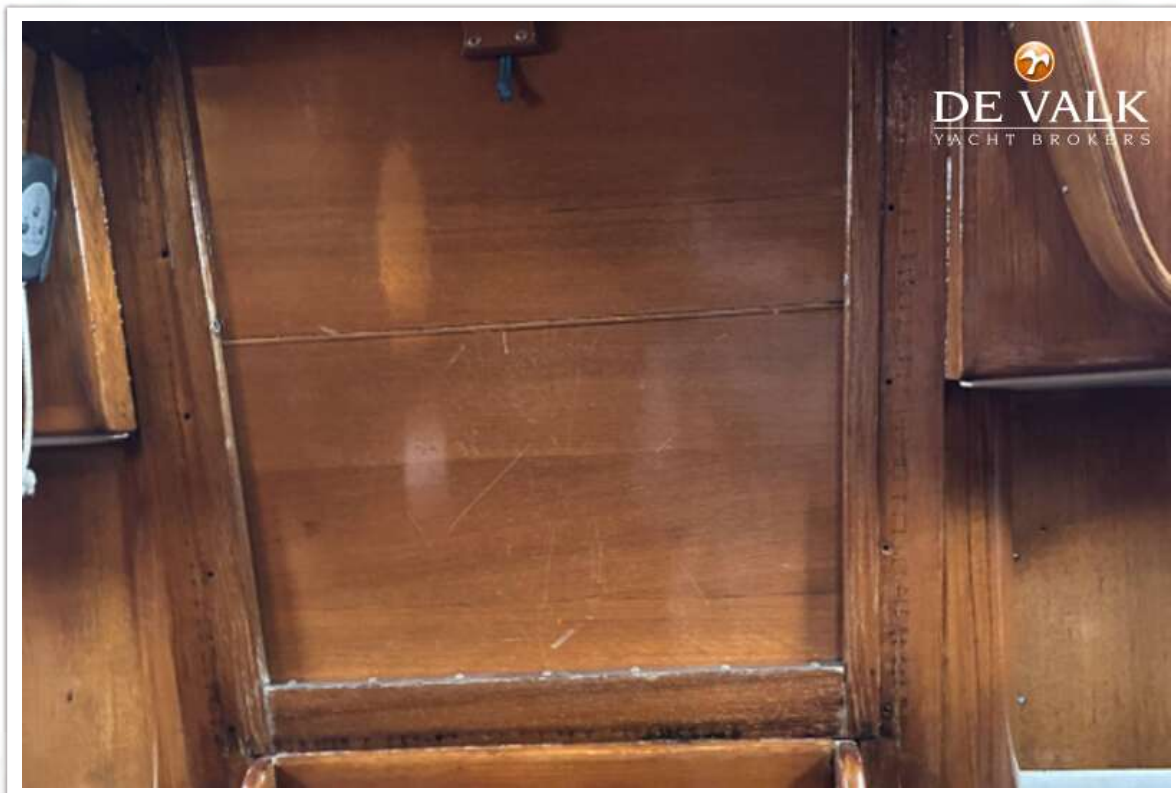
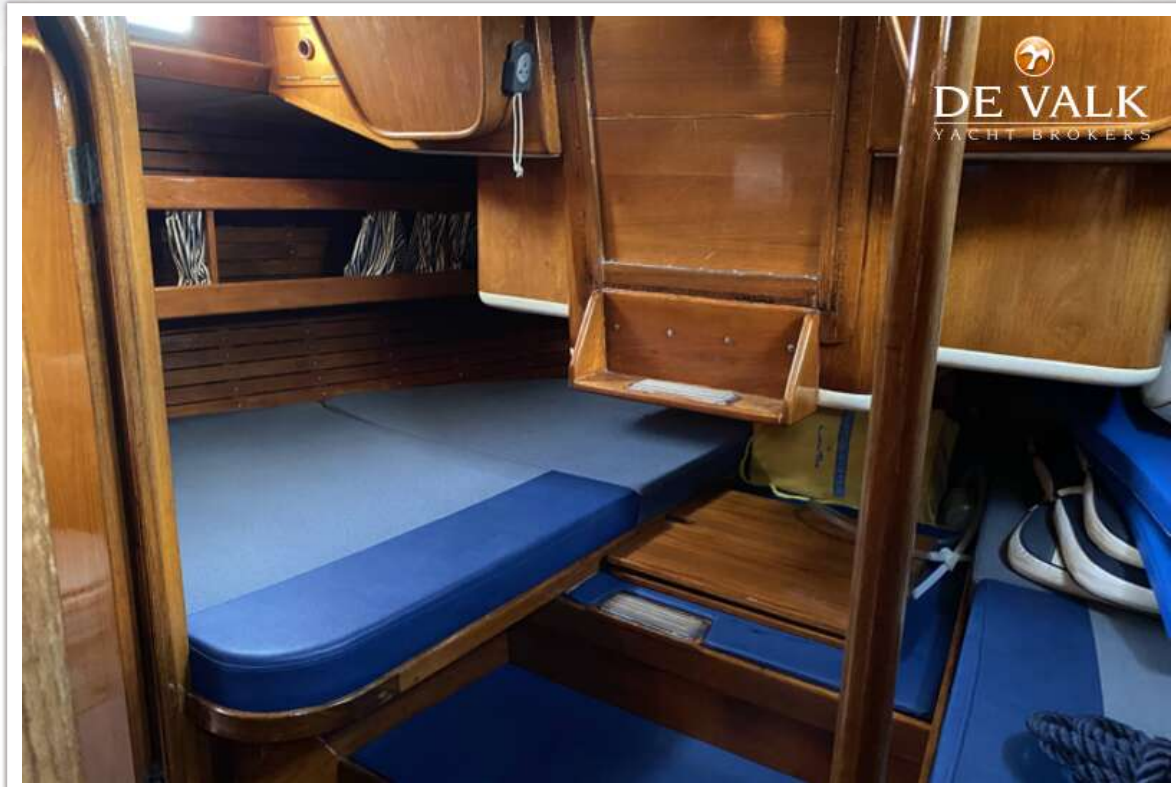
SWAN 47 MKII



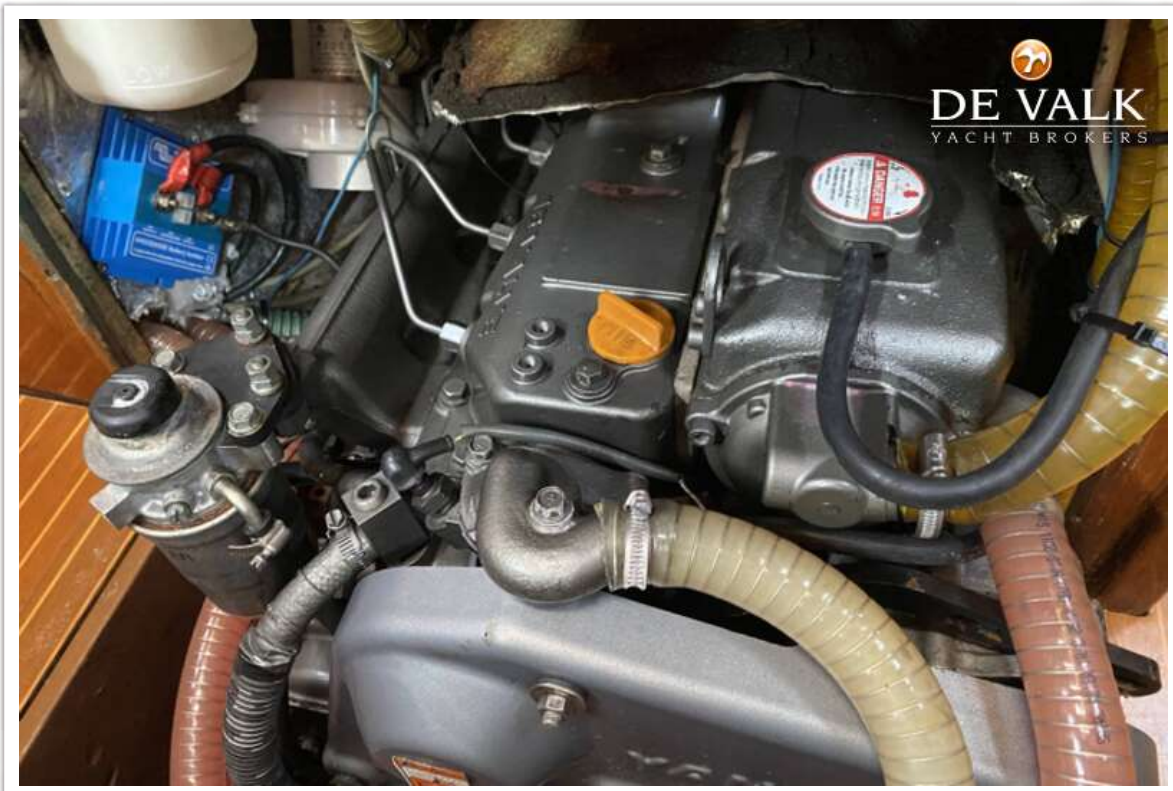
SWAN 47 MKII



SWAN 47 MKII



SWAN 47 MKII



SWAN 47 MKII

