



PILOT WHALE 45



PILOT WHALE 45

BROKER'S COMMENTS

The 'Pilot Whale 45' is a design by the famous designer Willem Nieland. Upon entering the ship you immediately step into the wheelhouse combined with a seating area. Further to the front is the kitchen with stove, microwave and refrigerator. Opposite the kitchen is the dinette. From the kitchen you enter the owner's cabin, which has its own shower and toilet. Once you go from the wheelhouse to the stern you enter the stern. Here you will find a desk with a corner sofa/sleeper. This area also has its own toilet and shower.

Ian Pols

SPECIFICATIONS

Dimensions	14.00 x 4.60 x 1.35 (m)	Builder	
Built	2004	Cabins	2
Material	Steel	Berths	4
Engine(s)	1 x Vetus-Deutz DT64635E diesel	Hp/Kw	159.00 (hp), 117.02 (kw)
Asking price	€ 249.500 (VAT Paid)	Lying	at sales office

CONTACT

Sales office	De Valk Altena	Telephone	+31 162 727211
Address	Keizersveer 3A 4941 TA Raamsdonksveer NL	E-mail	altena@devalk.nl

DISCLAIMER

These particulars are given in good faith as supplied but cannot be guaranteed.



GENERAL

Model	PILOT WHALE 45
Type	motor yacht
LOA (m)	14,00
Beam (m)	4,60
Draft (m)	1,35
Air draft min (m)	3,00
Headroom (m)	2,00
Year built	2004
Designer	Willem Nieland
CE norm	B
Hull material	steel
Hull colour	antracite gray
Hull shape	hard chine
Superstructure material	steel
Deck material	steel
Deck finish	non-skid paint
Superstructure deck finish	non-skid paint
Window frame	aluminium
Window material	double glazing
Deckhatch	Gebo
Portholes	Vetus
Flybridge	yes
Mast can be lowered	yes
Fuel tank (litre)	1500
Level indicator (fuel tank)	VSG 20430
Freshwater tank (litre)	polyethylene 800
Level indicator (freshwater)	VDO Ocean Line
Blackwater tank (litre)	150
Level indicator (blackwater)	VDO Ocean Line
Blackwater tank extraction	pump Jabsco



Greywater tank (litre)	polyethylene 150
Level indicator (greywater)	VDO Ocean Line
Wheel steering	hydraulic
Inside helm position	yes
Flybridge helm position	hydraulic

ACCOMMODATION

Cabins	2
Berths	4
Pilot house	yes
Saloon	yes
Heating	central heating Kabola B12 Tap
Navigation center	yes
Dinette to convert into berth	yes
Galley	yes
Sink	stainless steel
Cooker	calor gas
Gas alarm	Vetus GD1000
Microwave/oven combi	yes
Fridge	Liebherr
Hot water system	on central heating
Water pressure system	yes
Dishwasher	Candy CD19P45
Hot water tap	yes
Owners cabin	French bed
Wardrobe	hanging/drawers/shelves
Bathroom	en suite
Toilet	en suite
Toilet system	electric Mariner 45 standard
Wash basin	in the bathroom
Shower	en suite



Guest cabin 1	twin single
Wardrobe	hanging and shelves
Bathroom	en suite
Toilet	en suite Mariner 45 standard
Toilet system	electric
Wash basin	in the bathroom
Shower	en suite

MACHINERY

No of engines	1
Make	Vetus-Deutz
Type	DT64635E
HP	159
kW	117.02
Fuel	diesel
Engine cooling system	freshwater heat exchanger
Drive	shaft
Gearbox	hydraulic ZH Hurth 63-2,5
Bowthruster	electric Vetus Bow95
Exhaust	watercooled
Propeller type	fixed
Propeller shaft material	stainless steel
Manual bilge pump	yes
Electric bilge pump	yes
Electrical installation	12 V 24 V 220 V
Generator	Whisper 6kW
Start battery	2x 106 Ah (24V)
Service battery	4x 220 Ah (24V)
Generator battery	1x 102 Ah (12V)
Bowthruster battery	2x
Windlass battery	Same as bowthruster



PILOT WHALE 45

Battery charger/inverter	Victron Quattro 5000
Insulation transformer	Victron

NAVIGATION

Compass	Fluxgate
Depth sounder/log	yes
VHF	2x Raymarine 55E DSC
Autopilot	Raymarine EVOpilot 400+ P70R
Radar	Raymarine RD424D
GPS	Raymarine
Plotter	Raymarine E125-12
Weather receiver	Furuno NX300
Navigation lights	yes

EQUIPMENT

Cockpit cushions	yes
Cockpit table	yes
Bathing platform	yes
Anchor	yes
Anchor chain	10 mm, 50 m
Windlass	electrical
Deck crane	electric
Sea railing	stainless steel
Lifejackets	yes
Lifebuoy	yes
Wiper	yes
Horn	yes
Fenders	yes
Mooring lines	yes



PILOT WHALE 45



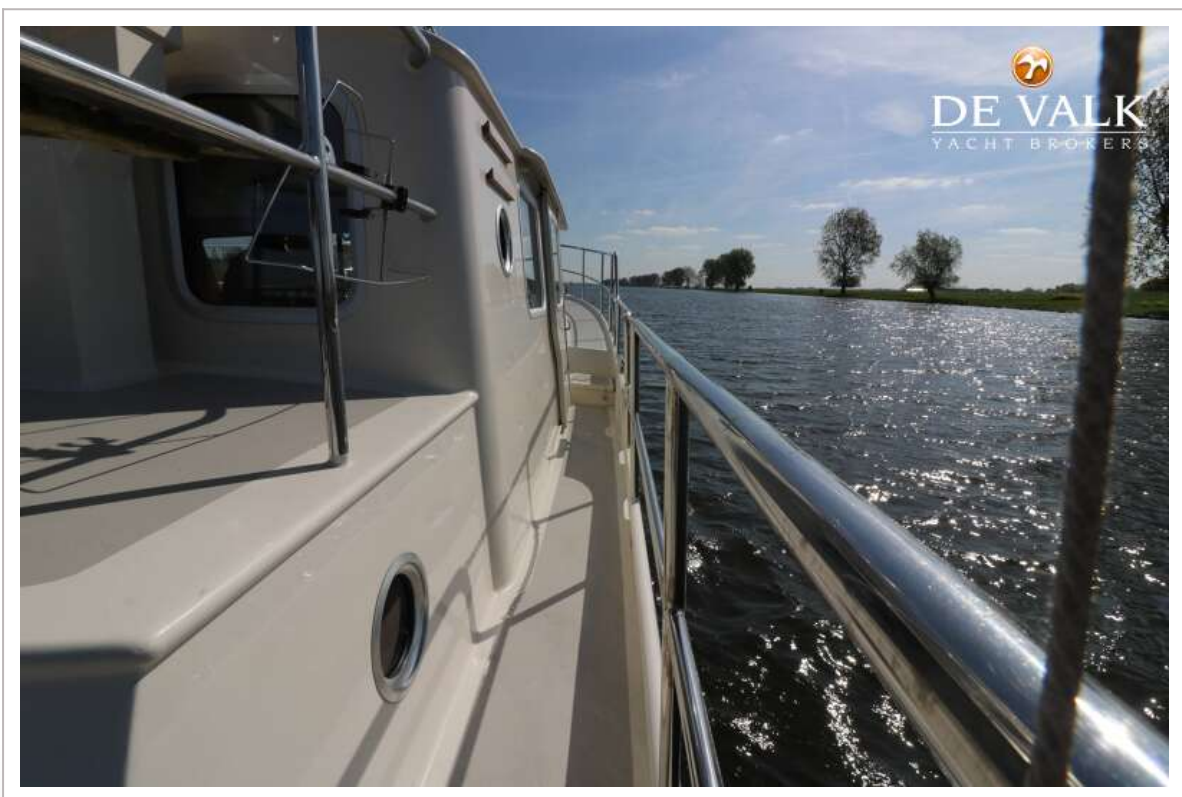
PILOT WHALE 45



PILOT WHALE 45



PILOT WHALE 45



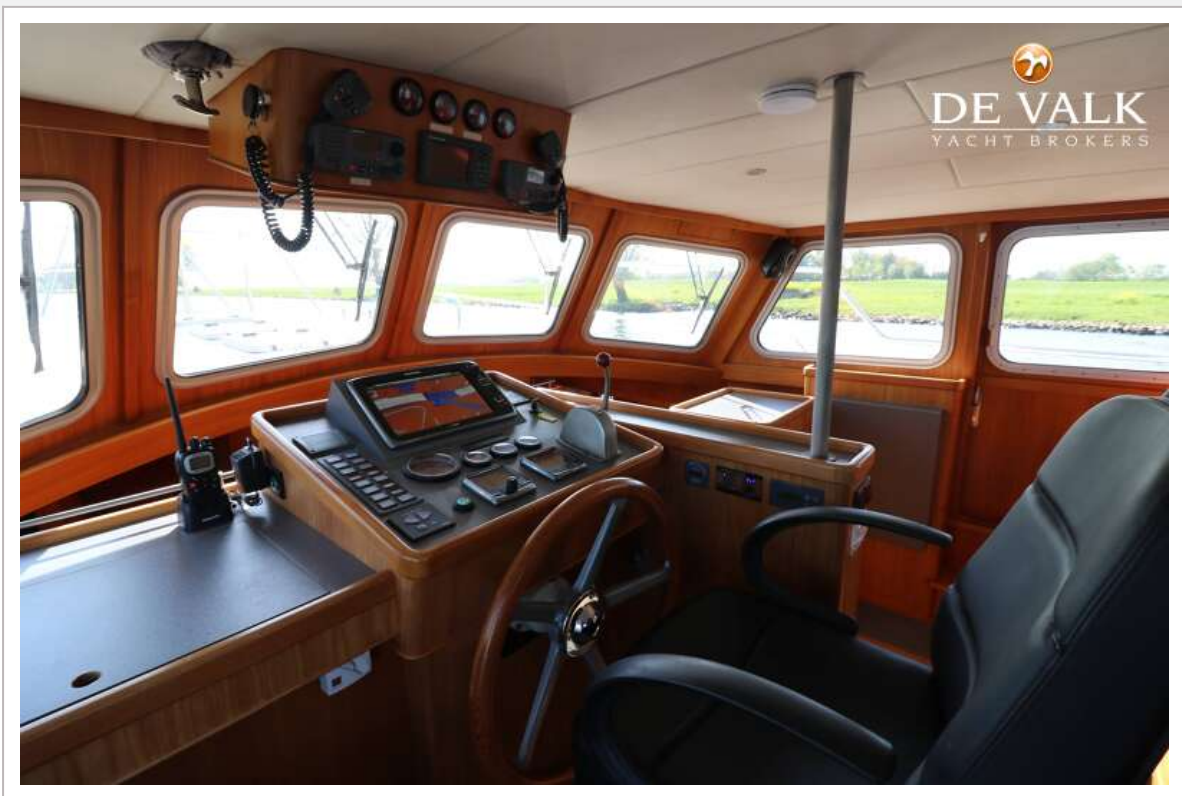
PILOT WHALE 45



PILOT WHALE 45



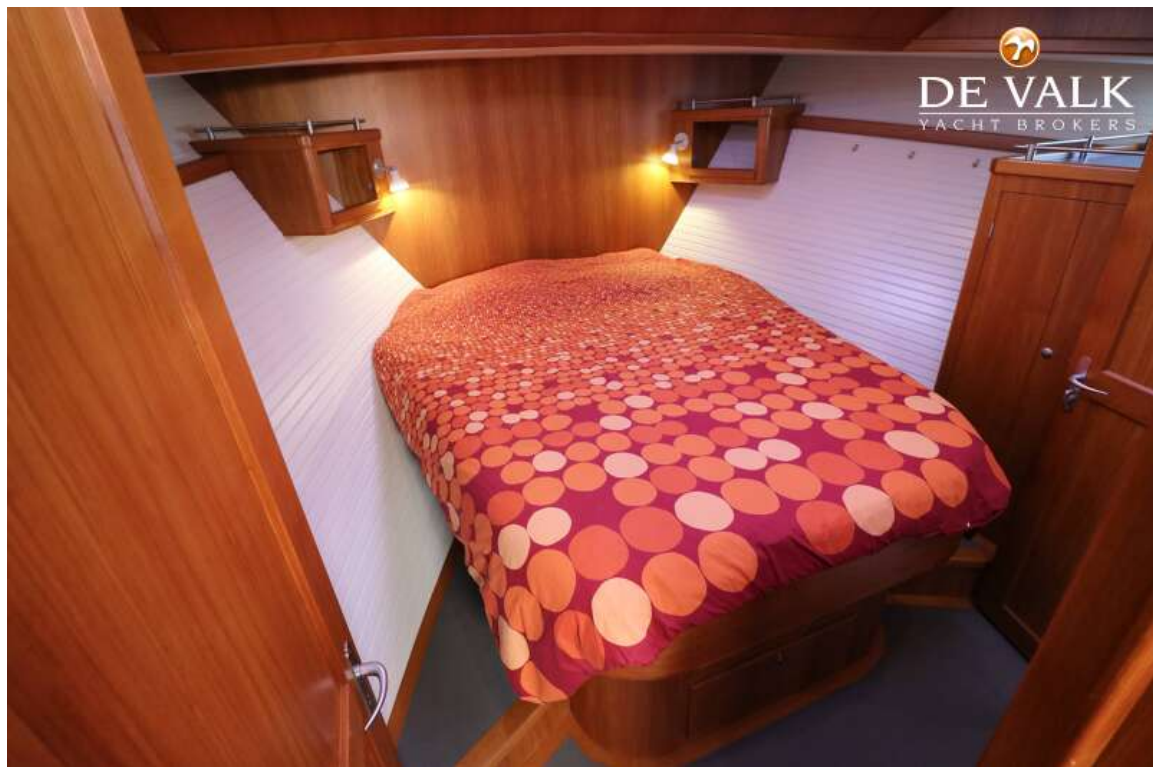
PILOT WHALE 45



PILOT WHALE 45



PILOT WHALE 45



PILOT WHALE 45



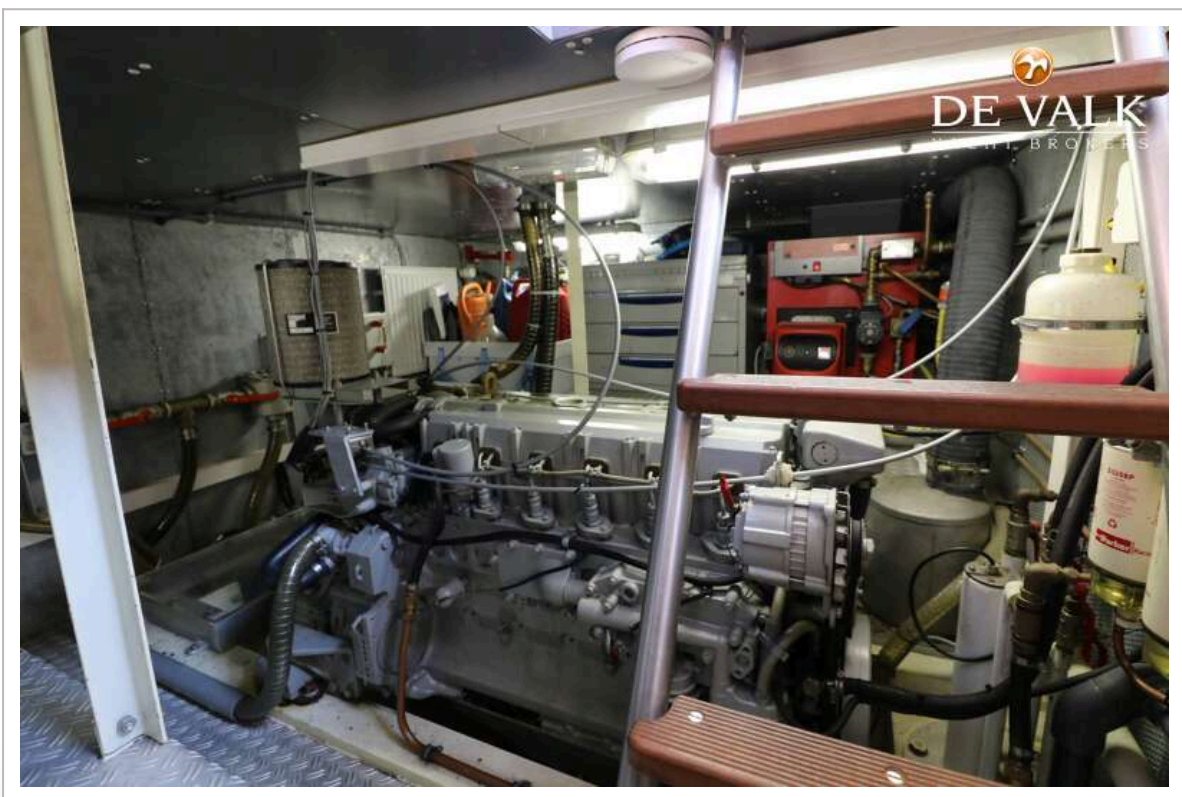
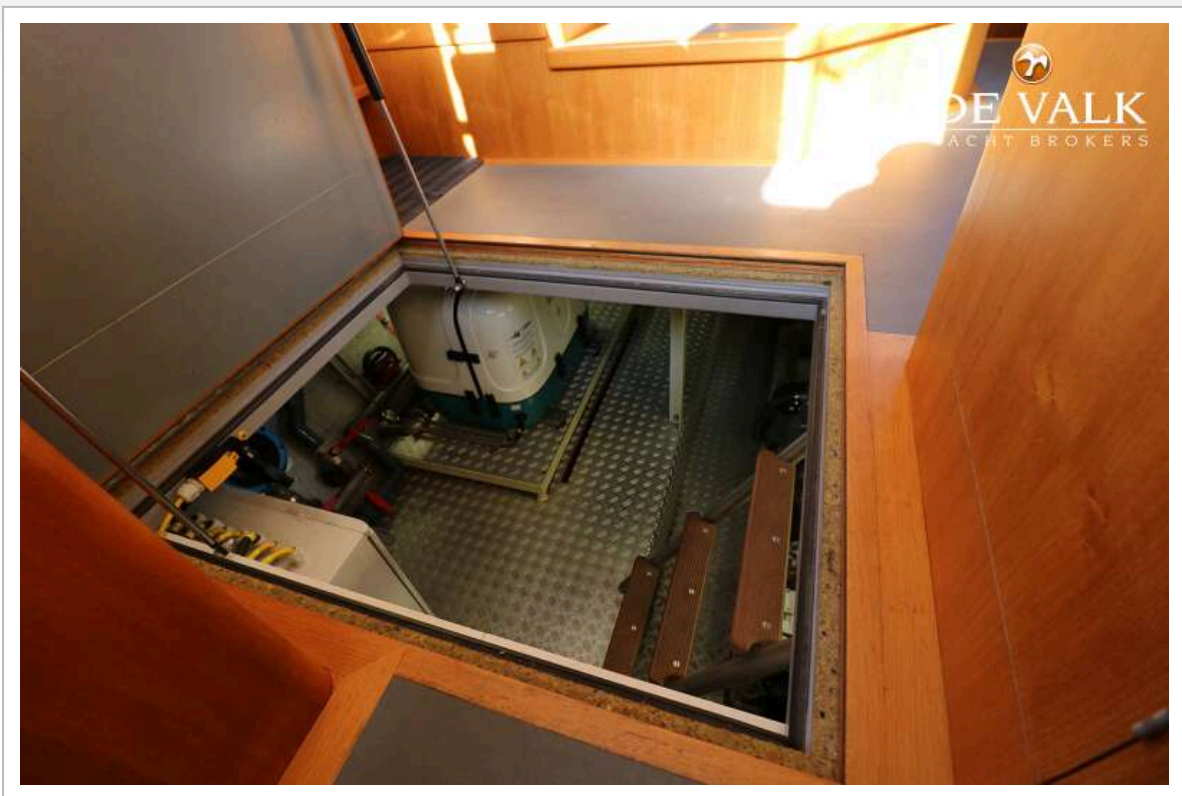
PILOT WHALE 45



PILOT WHALE 45



PILOT WHALE 45



PILOT WHALE 45

