



DE VALK  
YACHT BROKERS



## LONG RANGE PILOTHOUSE TRAWLER



DE VALK  
YACHT BROKERS

# LONG RANGE PILOTHOUSE TRAWLER

## BROKER'S COMMENTS

Long Range Pilothouse Trawler with Explorer DNA and ambitions. She started her life as a fishing trawler, now converted to her current live onboard motor yacht keeping her in style with her true offshore heritage. In recent years a lot has been done to bring her into her current condition. She comes fitted out for live aboard purposes and has accommodations to spare. Ideal for family or (paying) guests up to 11 persons in total. She support multi-level salon, pilothouse, office and sleeping areas. The engine room has ample space and so does her tankage and is true long range up to 5000 nm.

*Marc Weijenberg*

## SPECIFICATIONS

<b>Dimensions</b>	24.95 x 6.30 x 3.20 (m)	<b>Builder</b>	Westvlaamse Scheepwerven NV Oostkamp
<b>Built</b>	1961	<b>Cabins</b>	6
<b>Material</b>	Steel	<b>Berths</b>	11
<b>Engine(s)</b>	1 x ABC-Engines 6MDX diesel	<b>Hp/Kw</b>	250.00 (hp), 184.00 (kw)
<b>Asking price</b>	sold (VAT )	<b>Lying</b>	The Netherlands

## CONTACT

<b>Sales office</b>	De Valk Thuishaven	<b>Telephone</b>	+31 35 5829042
<b>Address</b>	Peperstraat 7 1411 PX Naarden NL	<b>E-mail</b>	thuishaven@devalk.nl

## DISCLAIMER

These particulars are given in good faith as supplied but cannot be guaranteed.



# LONG RANGE PILOTHOUSE TRAWLER

## GENERAL

Model	LONG RANGE PILOTHOUSE TRAWLER
Type	motor yacht
LOA (m)	24,95
Beam (m)	6,30
Draft (m)	3,20
Air draft min (m)	11,50
Headroom (m)	1,95
Year built	1961
Builder	Westvlaamse Scheepwerven NV Oostkamp
Country	Belgium
Displacement (t)	130
Ballast (tonnes)	concrete
Hull material	steel
Hull colour	blue
Hull shape	S-bilged
Bilge keels	yes
Superstructure material	steel
Rubbing strake	steel
Deck material	steel
Deck finish	non-skid paint
Antifouling (year)	Last docked 2023
Dorades	yes
Window frame	brass
Window material	tempered glass
Deckhatch	yes
Portholes	brass
Insulation	rockwool
Fuel tank (litre)	steel 2 x 10.000
Level indicator (fuel tank)	yes
Fuel daytank (litre)	steel 450



# LONG RANGE PILOTHOUSE TRAWLER

Level indicator (daytank)	yes
Freshwater tank (litre)	steel 10.000
Blackwater tank (litre)	steel 150
Wheel steering	hydraulic
Emergency tiller	electric
More info on paintwork	Uwbody sandblasted 2018, hull painted 2023, superstructure painted 2019
Extra info	CBB/CVO valid till March 2031, registered in the Netherlands under 24mtr.

## ACCOMMODATION

Cabins	6
Berths	11
Interior	mahogany Jatoba
Floor	wood
Aft deck	yes
Pilot house	with backoffice and entrance aftdeck
Saloon	Full beam salon, situated aft with open galley arrangement.
Headroom saloon (m)	1,95
Heating	central heating ACV/Elco (220v-diesel) + Diodom pellet stove, plus remote app
Heating 2	central heating 4 x Solar collector (2023)
Aft Cabin	Owner cabin aft with spiral stair from the salon.
Dinette	Leather upholstery
Opening door to aft deck	yes
Galley	yes
Countertop	granite
Sink	1 x (copper)
Cooker	electric Whirlpool induction 4 burner (220v)
Oven	Siemens (220v)
Extractor	yes
Fridge	2 x (220v)



# LONG RANGE PILOTHOUSE TRAWLER

Freezer	1 x (220v)
Hot water system	on central heating Boyler
Water pressure system	electrical DAB Skybox pressure pump
Dishwasher	Indesit (220v)
Coffee maker	plus Airfryer
Crockery	yes
Owners cabin	double bed
Bed length (m)	2,00 x 1,70 mtr, headroom 1,93 mtr
Wardrobe	hanging/drawers/shelves
Bathroom	en suite I
Toilet	en suite
Toilet system	electric
Wash basin	in the bathroom
Shower	separate
Guest cabin 1	double bed
Bed length (m)	2,10 x 1,60 mtr, headroom 1,85/1,95 mtr
Wardrobe	hanging and shelves
Guest cabin 2	double bed
Bed length (m)	1,90 x 1,40 mtr, headroom 2,00 mtr
Wardrobe	hanging and shelves
Bathroom	shared II
Toilet	shared
Toilet system	electric
Wash basin	in the bathroom
Shower	shared
Extra info	Bedlength in the guestcabins can be extended.
Guest cabin 3	double bed
Bed length (m)	1,90 x 1,40 mtr, headroom 2,00 mtr
Wardrobe	hanging and shelves
Bathroom	shared III
Toilet	shared
Toilet system	electric



# LONG RANGE PILOTHOUSE TRAWLER

Wash basin	in the bathroom
Shower	shared
Guest cabin 4	single bed (or storage room)
Bed length (m)	Baby-cott (can be altered with not to much work)
Wardrobe	hanging and shelves
Washing machine	Bosch (220v)
Dryer	Siemens (220v)
Extra info	The salon hallway has a daytoilet.
Extra info	Forward on deck you will find a large storage space with workbench (and access bowthruster)

## MACHINERY

No of engines	1
Make	ABC-Engines
Type	6MDX
HP	250
kW	184
Fuel	diesel
Year installed	1961
Maximum speed (kn)	8,5
Cruising speed (kn)	7
Consumption (l/hr)	25
Range (nm)	5000
Engine cooling system	closed keelcooling
Drive	shaft
Engine controls	bowden cable
Gearbox	hydraulic Brevo 3510
Engine controls	mechanical
Bowthruster	electric Kalkman Bèta 40E 220v 20hp (2021)
Exhaust	dry
Propeller type	fixed



# LONG RANGE PILOTHOUSE TRAWLER

Propeller blades	4 (1600mm)
Propeller shaft material	Staal
Shaft lubrication	grease
Electric bilge pump	with pump-manifold
Electrical installation	24v/220v/400v
Generator	Stamford 20kVA (380v)
Generator 2	Lister Petter Stanford 15kVA (230v)
Start battery	no, main engine is compressed air starting
Service battery	720ah (2019)
Battery monitor	Victron
Battery charger/inverter	Victron Quattro 24v/5000watt/100amp
Solar panel	4 x Jinko 440wp (1760wp) + Victron MPPT smartcontroller (2023)
Shorepower	with cable 230v / 400v AC
Insulation transformer	Victron 3600
Extra info	Aircompressor, hydraulic powerpack, double fuel filter system.

## NAVIGATION

Compass	Sestrel
Electric compass	via autopilot + Furuno Satellite compass
VHF	2 x Shipmate RS8300
VHF handheld	yes
Autopilot	Furuno Navpilot (hydraulic)
Rudder angle indicator	yes
Radar	Simrad
GPS	Simrad
Plotter	for navigation, camera's, GPS, track, AIS 2 x Simrad
Navtex	Furuno NX-300
Wifi antenna	with onboard network
Electronic chart(s)	yes
AIS transceiver	Carbon Pro True Heading



# LONG RANGE PILOTHOUSE TRAWLER

Transmitter	MH/HF available, not installed
EPIRB	yes
Camera	Camera's outside and in the engineroom
Navigation lights	yes
Searchlight	yes
Extra info	Set of walkie-talkies for onboard communication

## EQUIPMENT

Sun awning	Over the aftdeck
Cockpit table	on aftdeck
Cockpit chairs	on aftdeck
Boarding ladder	aluminum
Deck shower	hot+cold water (from forward storage area)
Anchor	Pool
Anchor chain	60 mtr
Windlass	hydraulic
Capstan	hydraulic
Davits	(removable)
Davits controls	electrical
Deck crane	electric
Sea railing	steel
Railing side opening gates	including boarding-plank 2 x
Life raft	container 2 x
Life raft (pers)	2 x 15
Last life raft survey	service out of date
Lifejackets	30
Lifebuoy	3
Wiper	2 x
Horn	air pressure
Fenders	yes
Mooring lines	yes





# LONG RANGE PILOTHOUSE TRAWLER

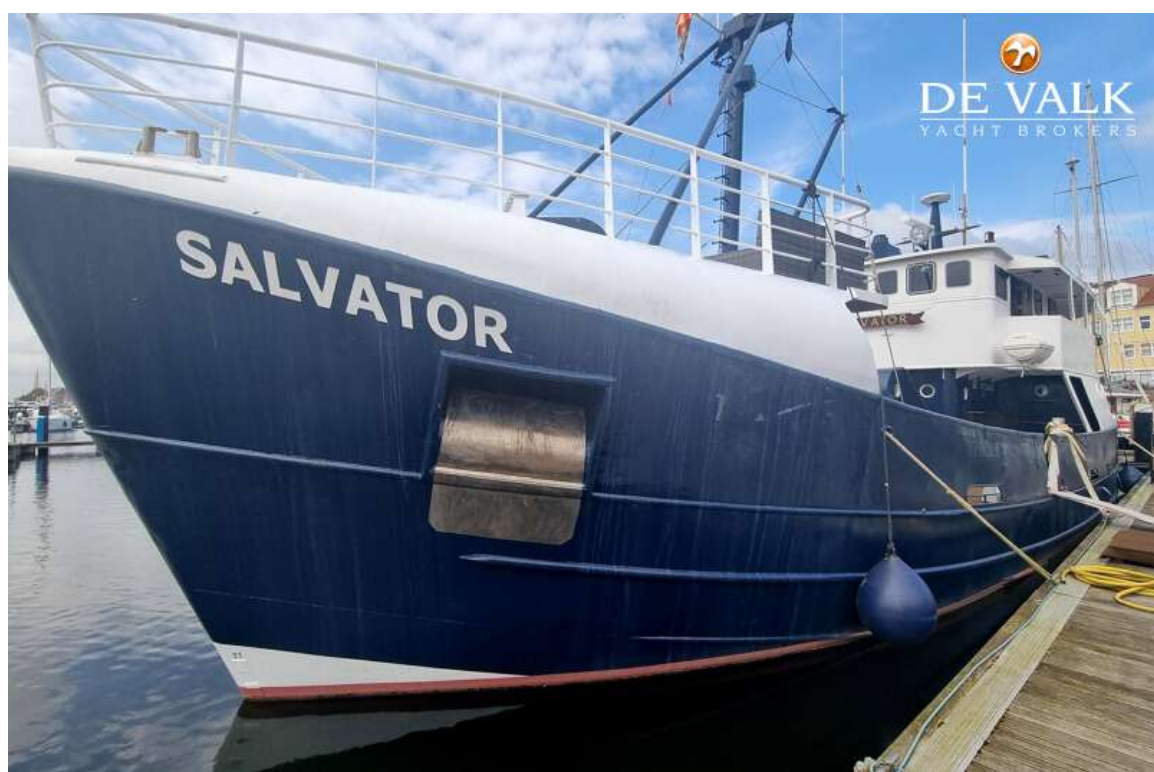
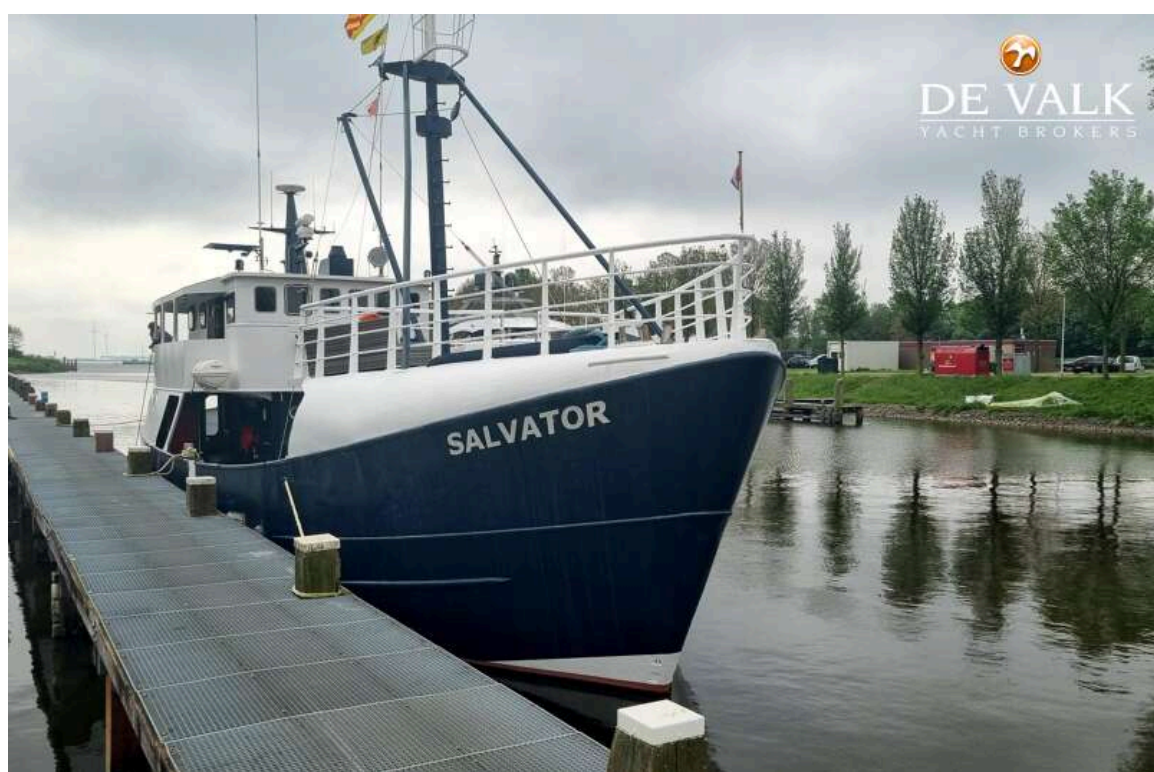
Spare parts	yes
Tools	yes
TV	In salon on lift plus office pilothouse 2 x
TV receiver	streaming via Wifi network
Surround Sound System	Harmen Kardon
Speakers in salon	yes
Clock - barometer	yes
Fire extinguisher	yes
Latest extinguisher survey	2023
Extinguisher in engine room	2 x



# LONG RANGE PILOTHOUSE TRAWLER

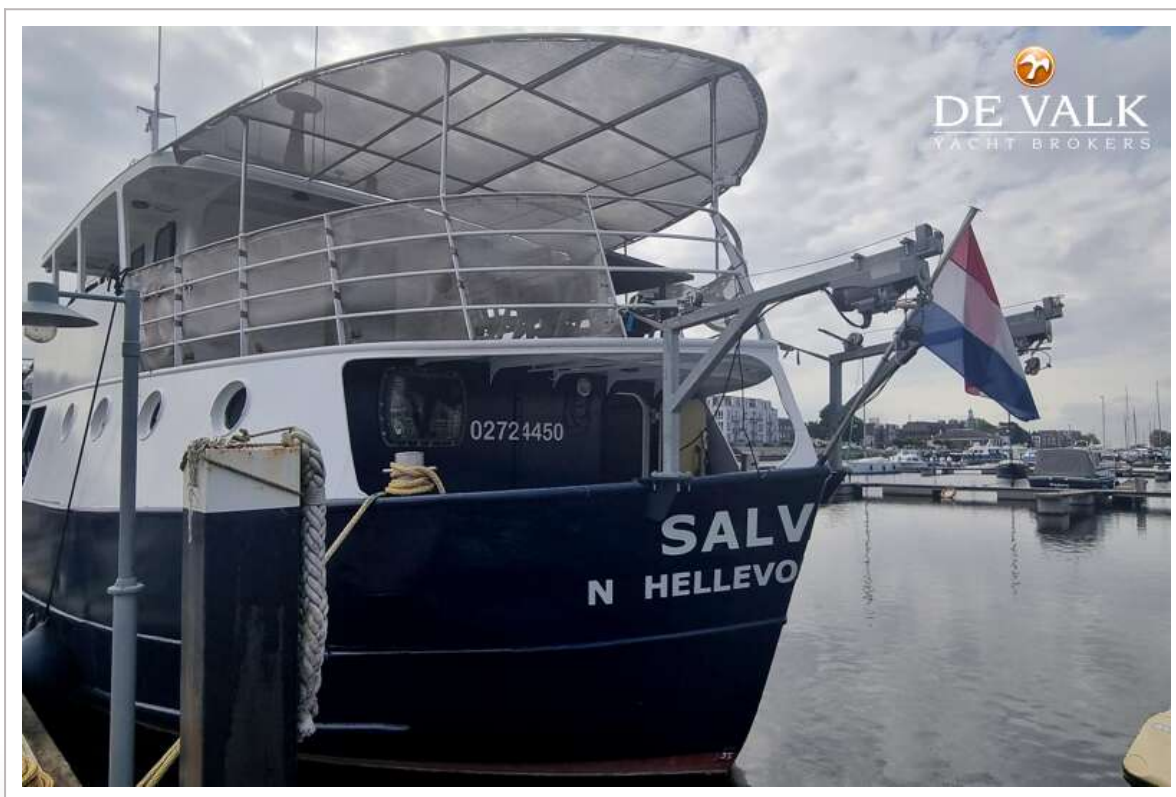


# LONG RANGE PILOTHOUSE TRAWLER





# LONG RANGE PILOTHOUSE TRAWLER



# LONG RANGE PILOTHOUSE TRAWLER

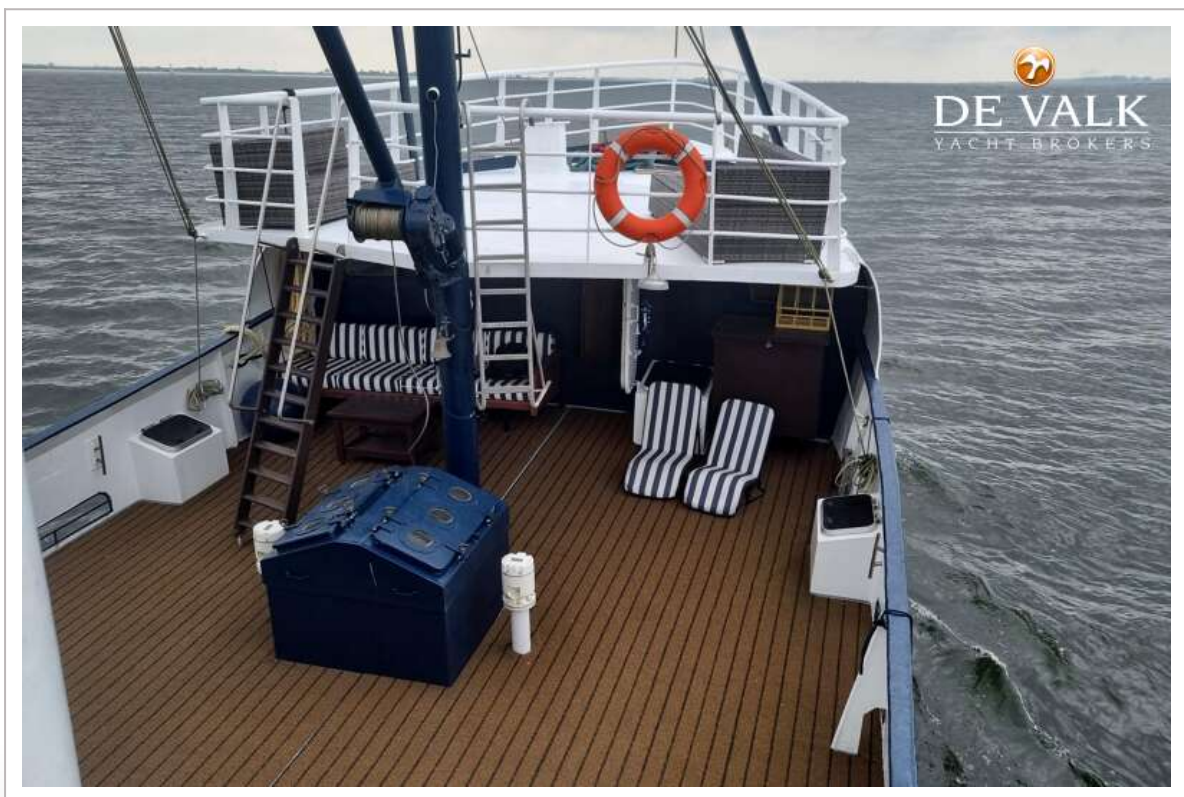
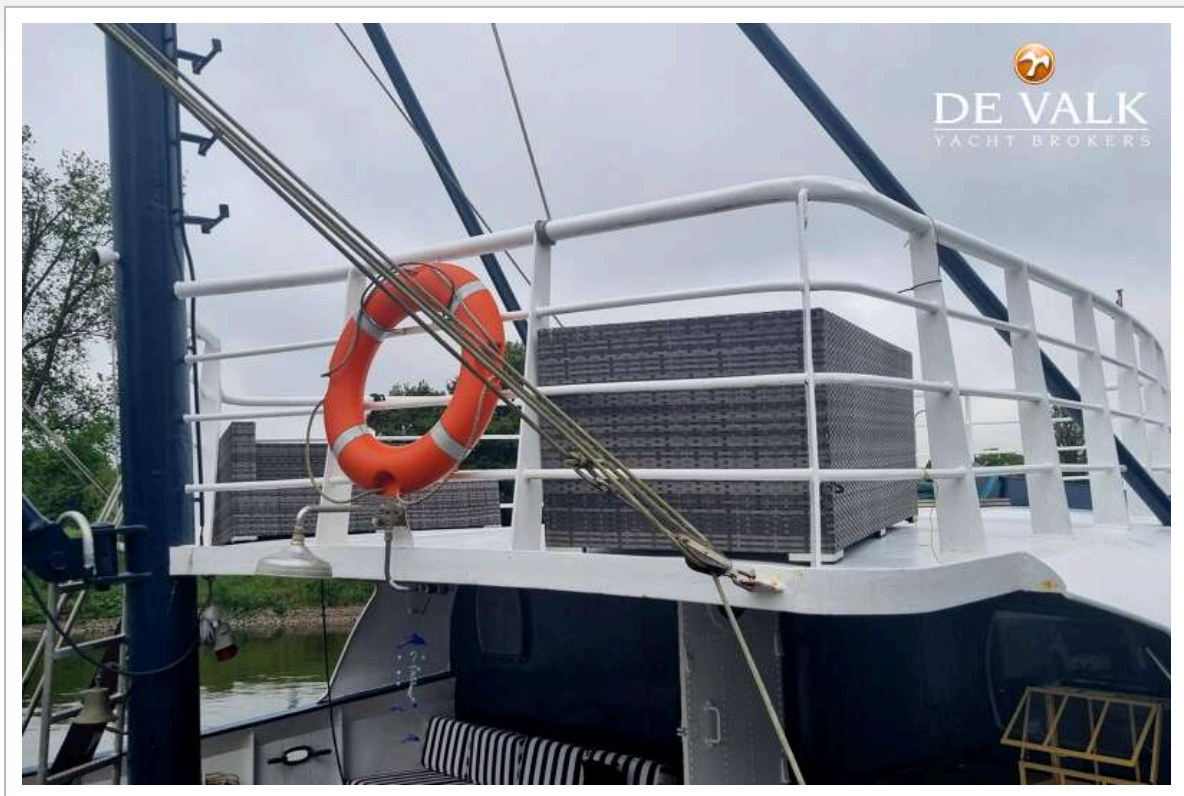




# LONG RANGE PILOTHOUSE TRAWLER

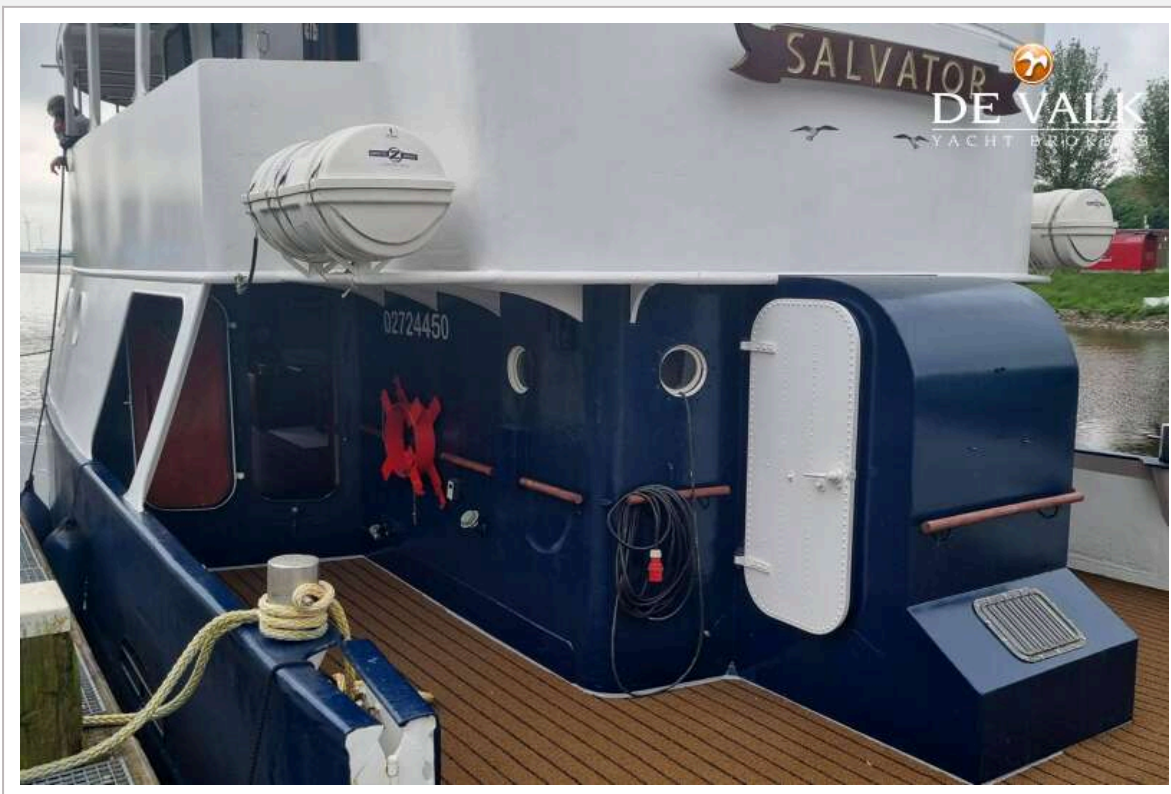


# LONG RANGE PILOTHOUSE TRAWLER



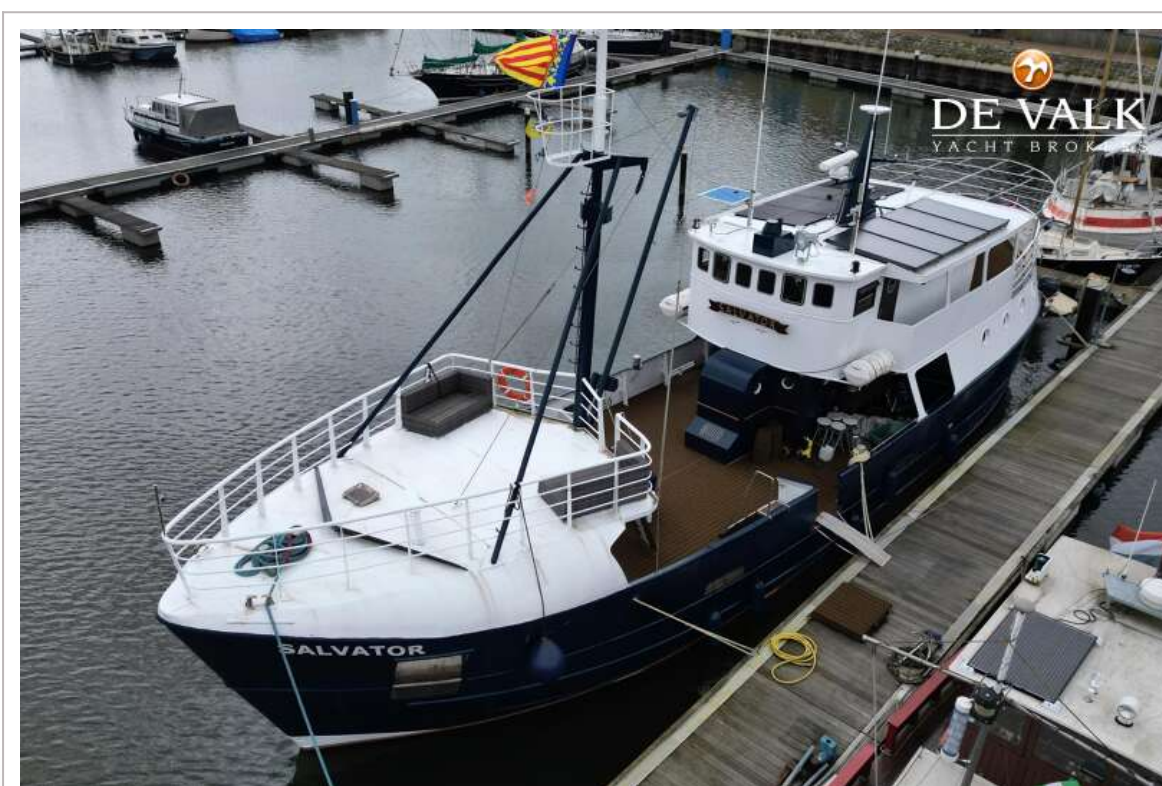


# LONG RANGE PILOTHOUSE TRAWLER

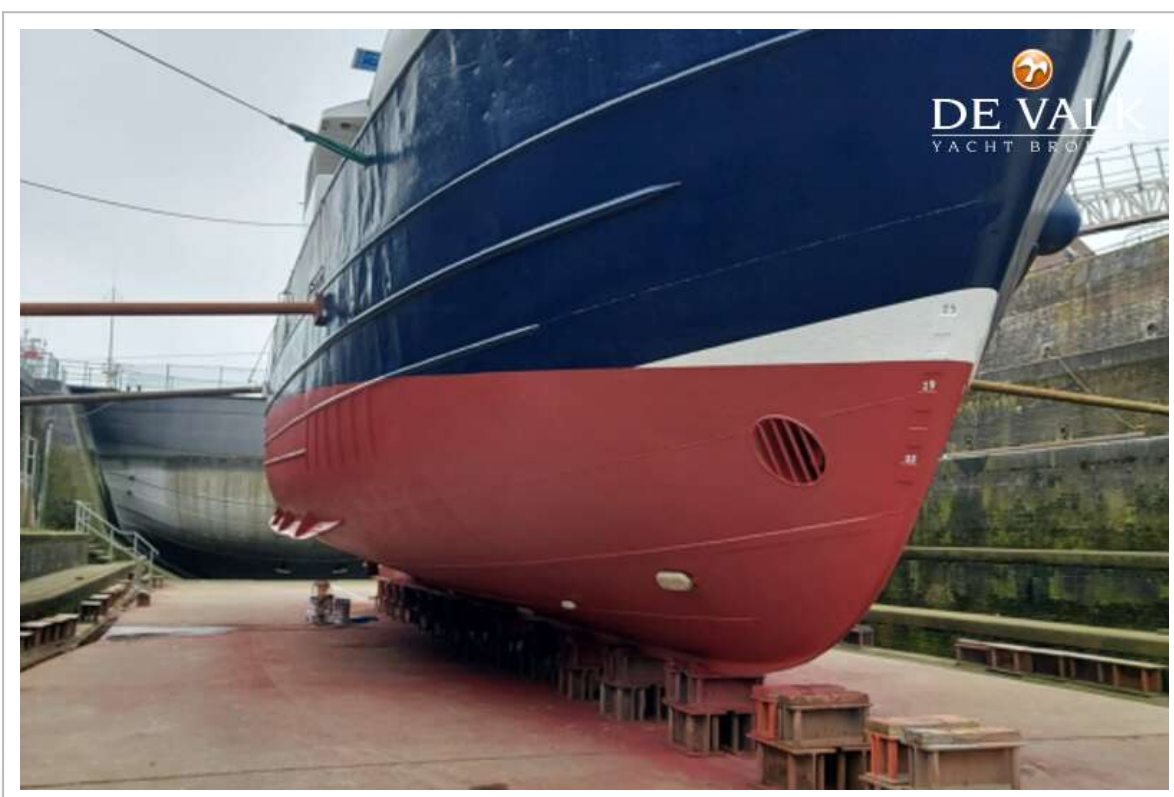
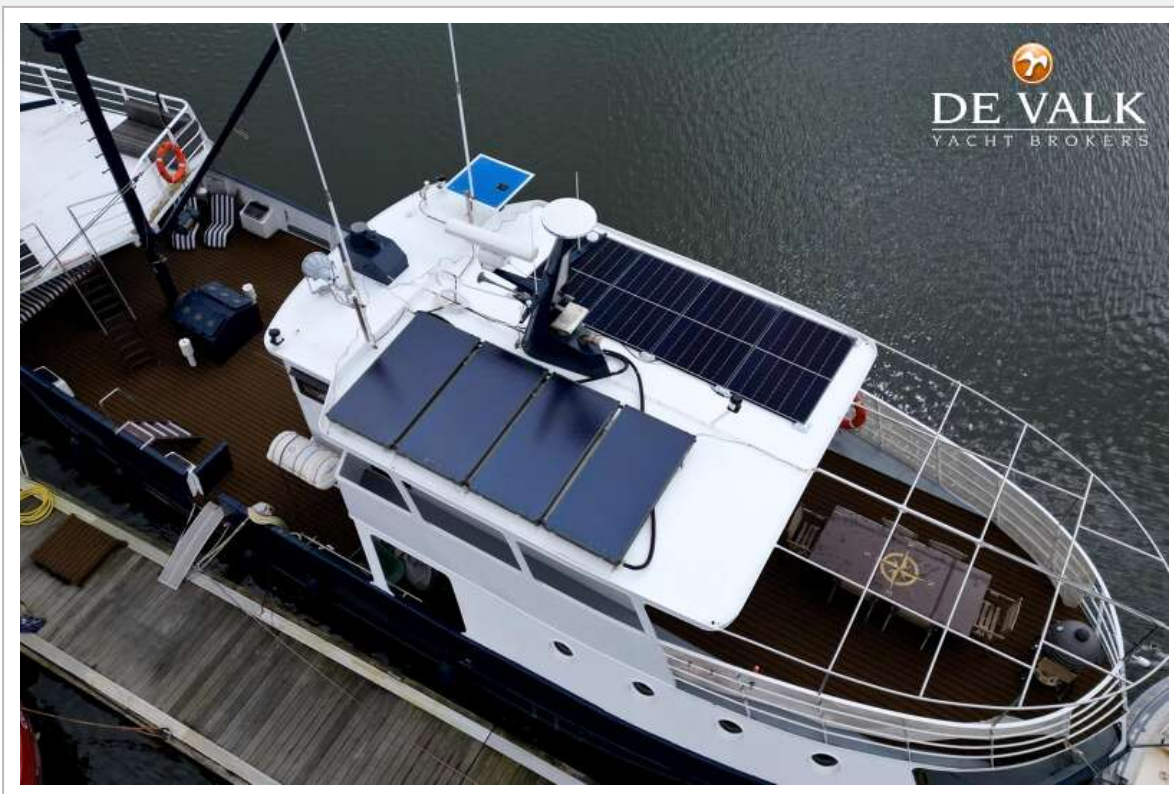




# LONG RANGE PILOTHOUSE TRAWLER

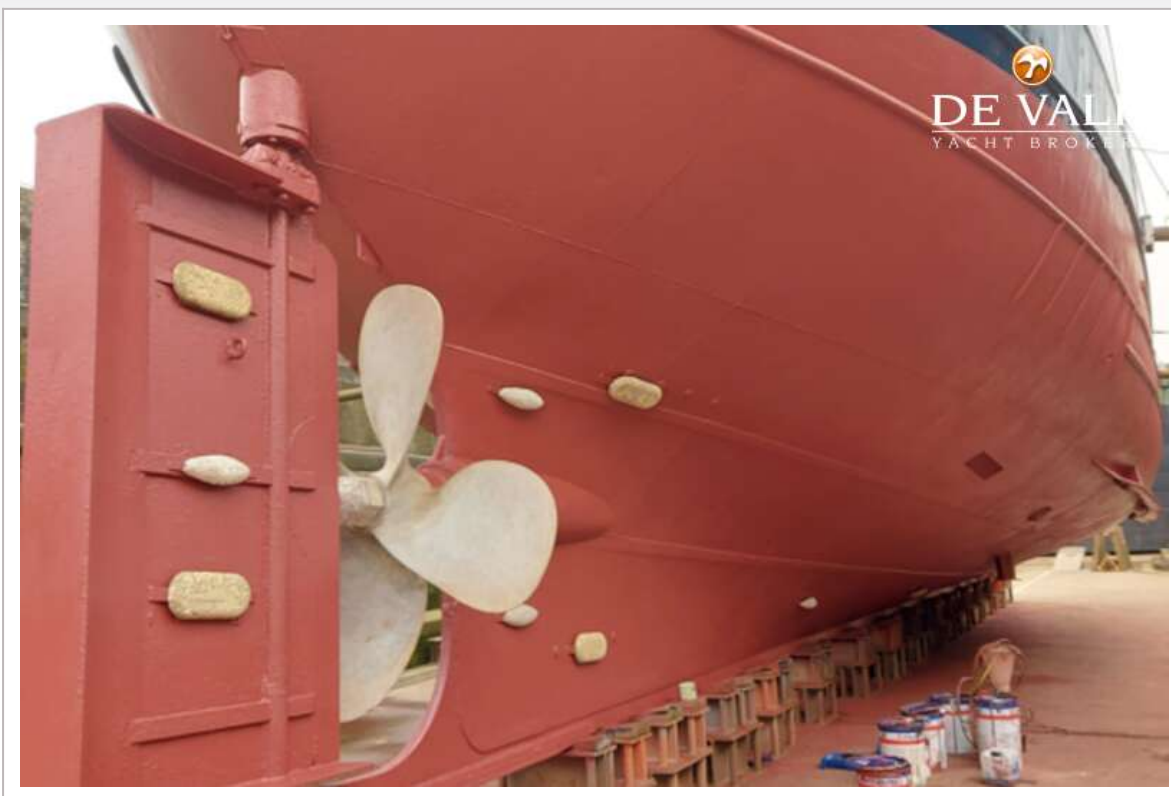


# LONG RANGE PILOTHOUSE TRAWLER

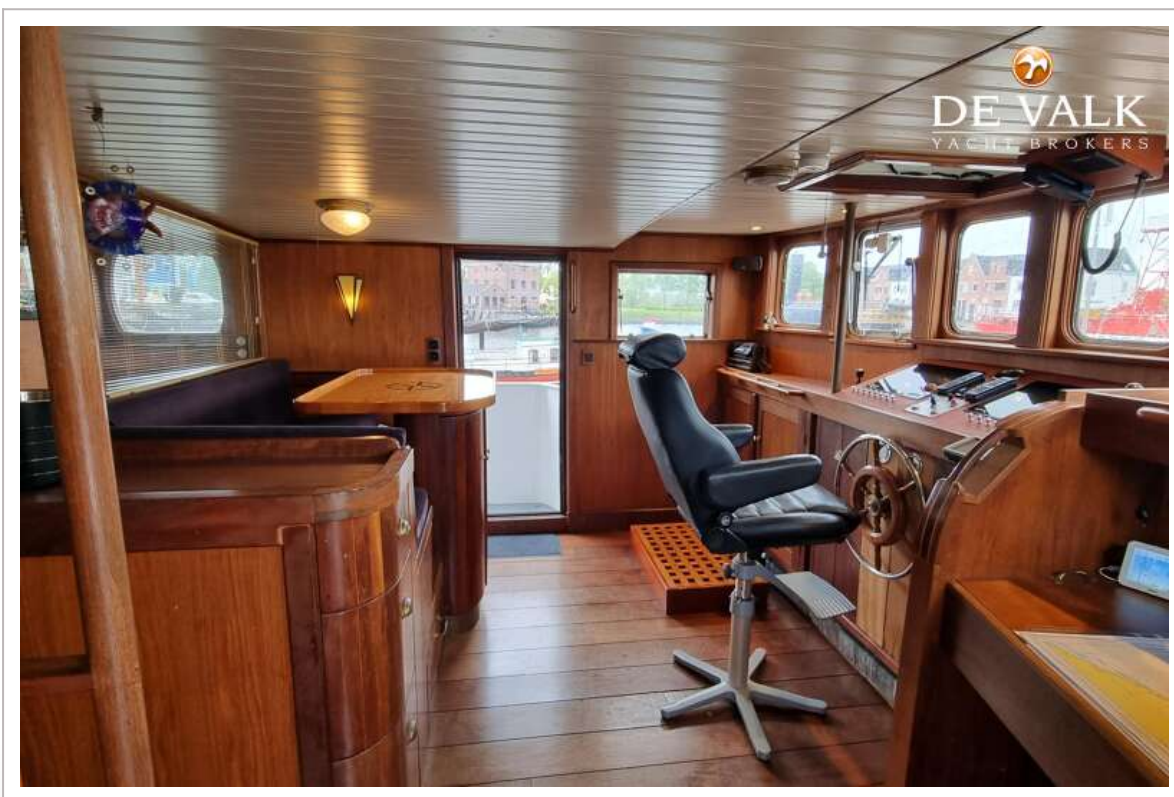
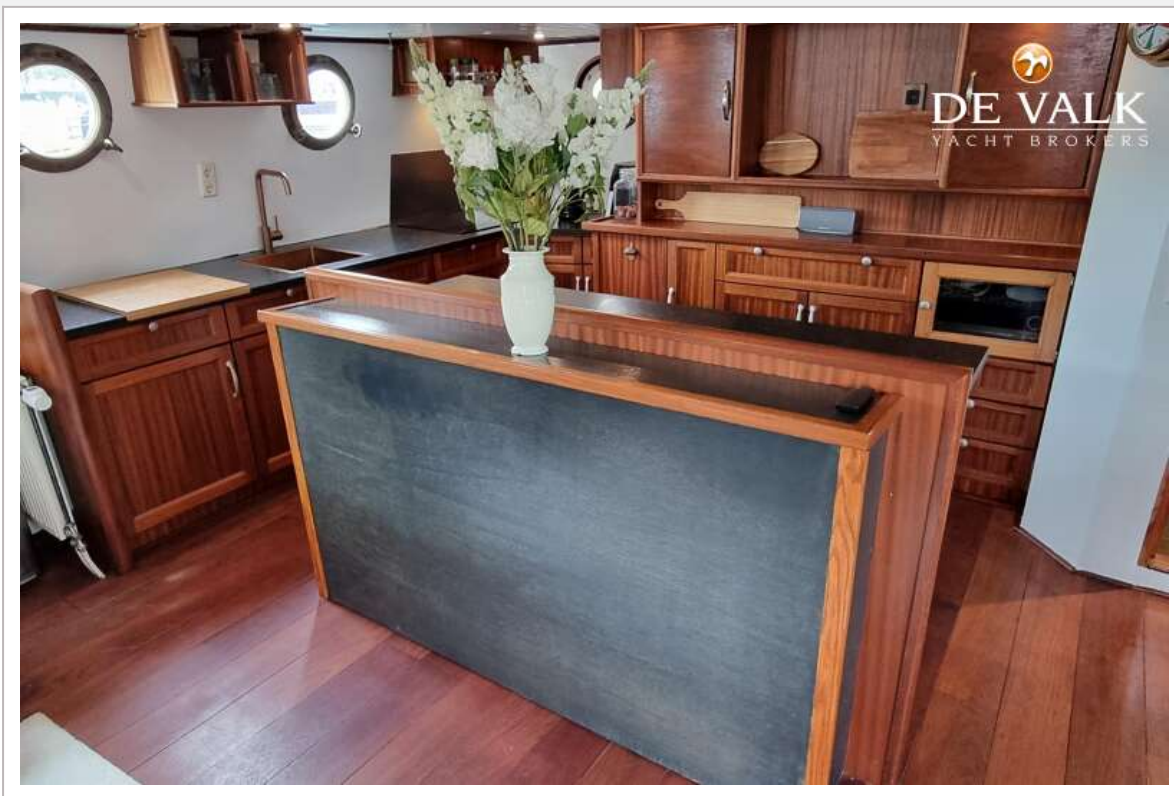




# LONG RANGE PILOTHOUSE TRAWLER



# LONG RANGE PILOTHOUSE TRAWLER





# LONG RANGE PILOTHOUSE TRAWLER

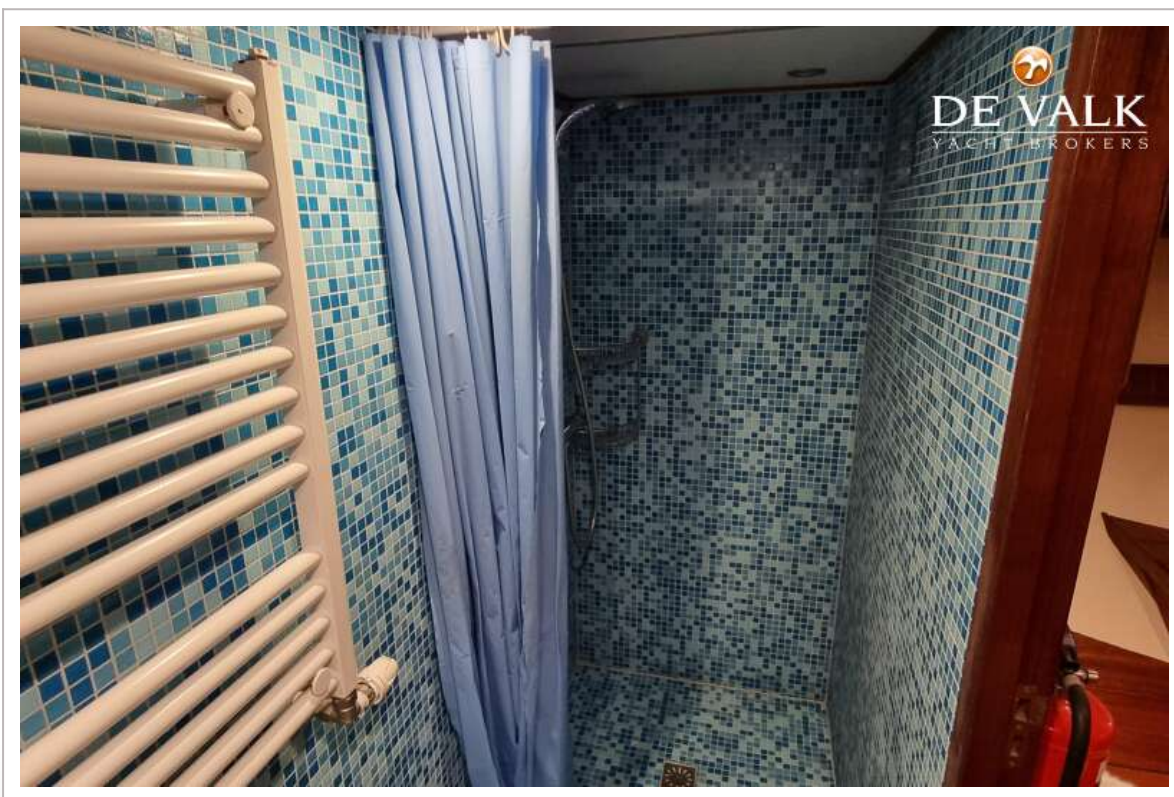
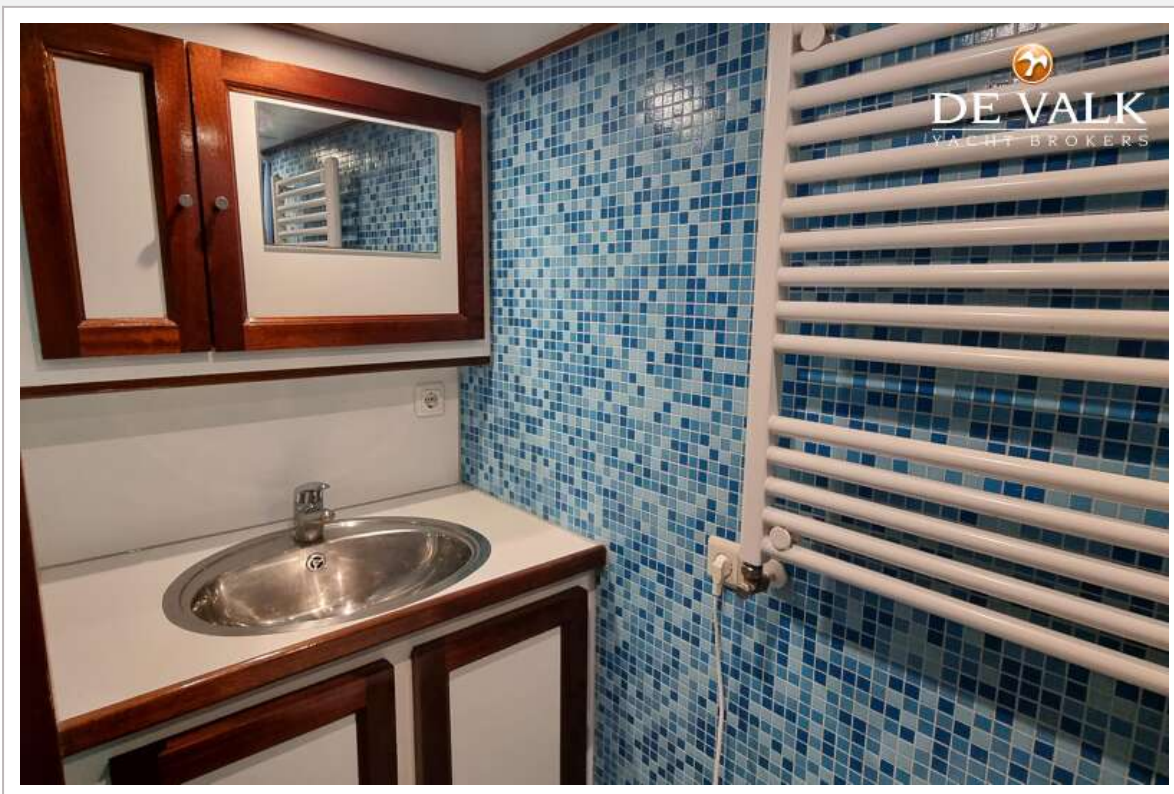


# LONG RANGE PILOTHOUSE TRAWLER

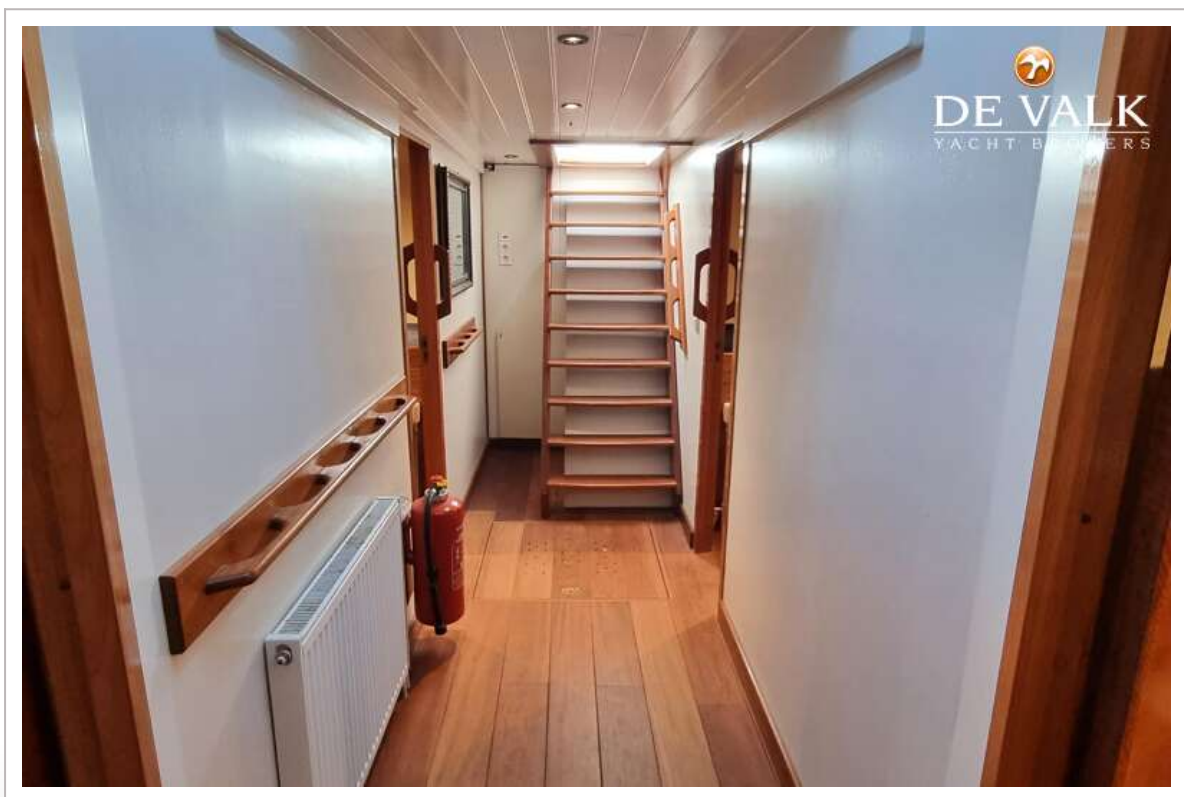




# LONG RANGE PILOTHOUSE TRAWLER

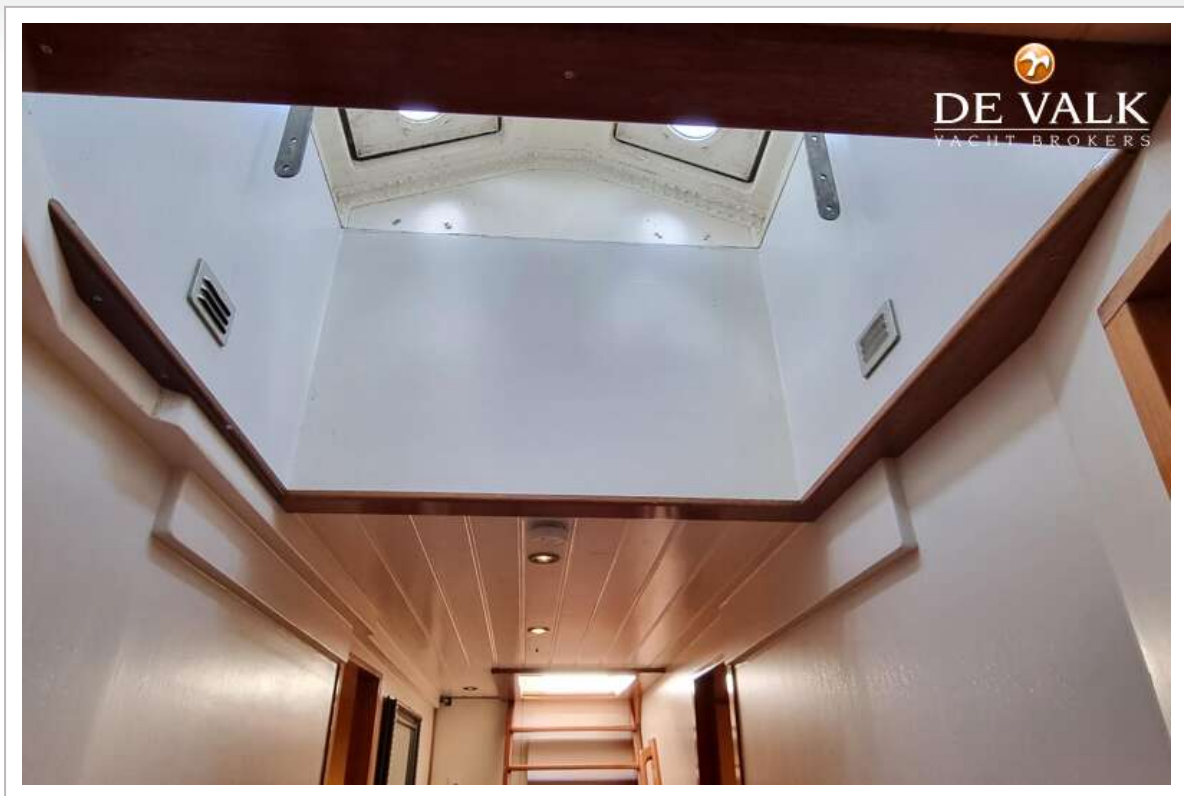


# LONG RANGE PILOTHOUSE TRAWLER





# LONG RANGE PILOTHOUSE TRAWLER

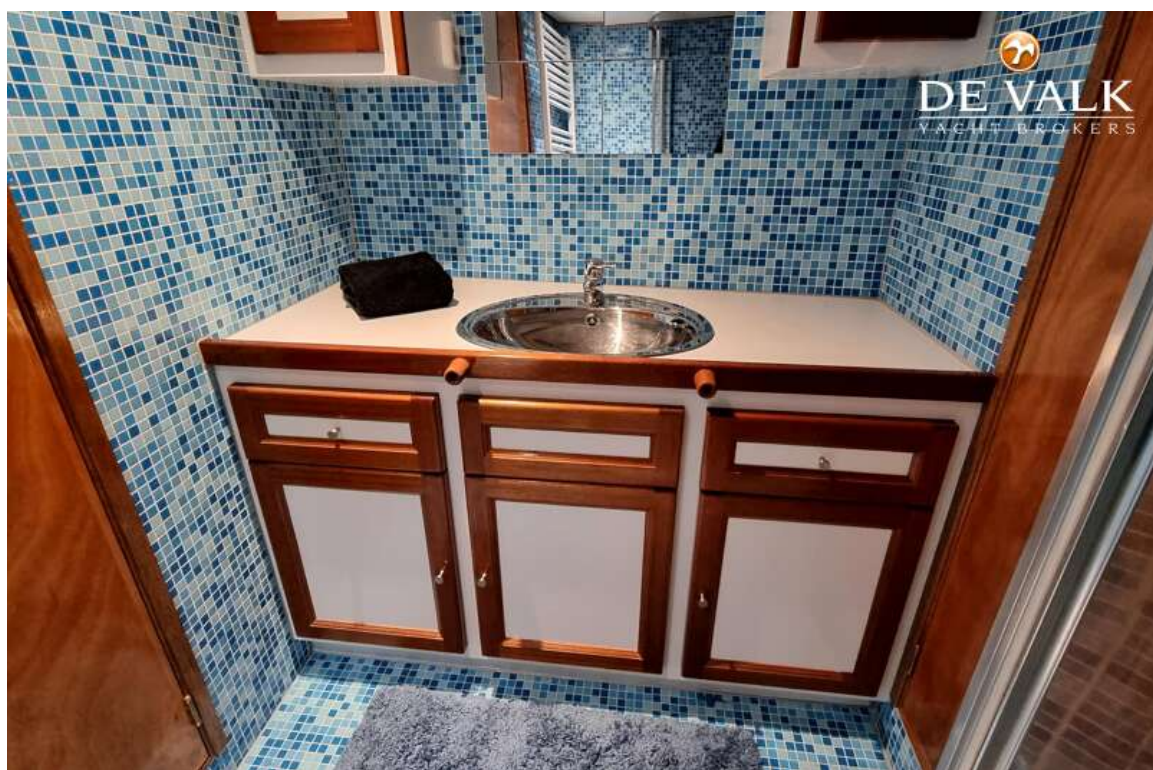
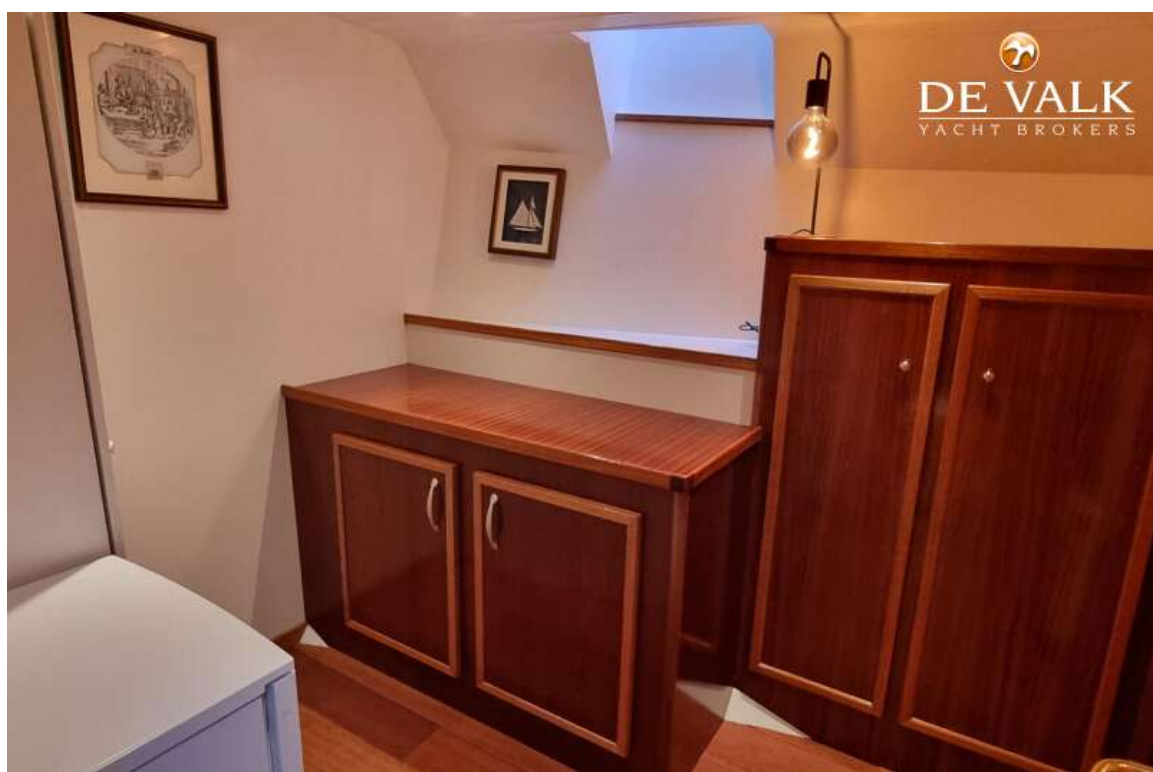


# LONG RANGE PILOTHOUSE TRAWLER



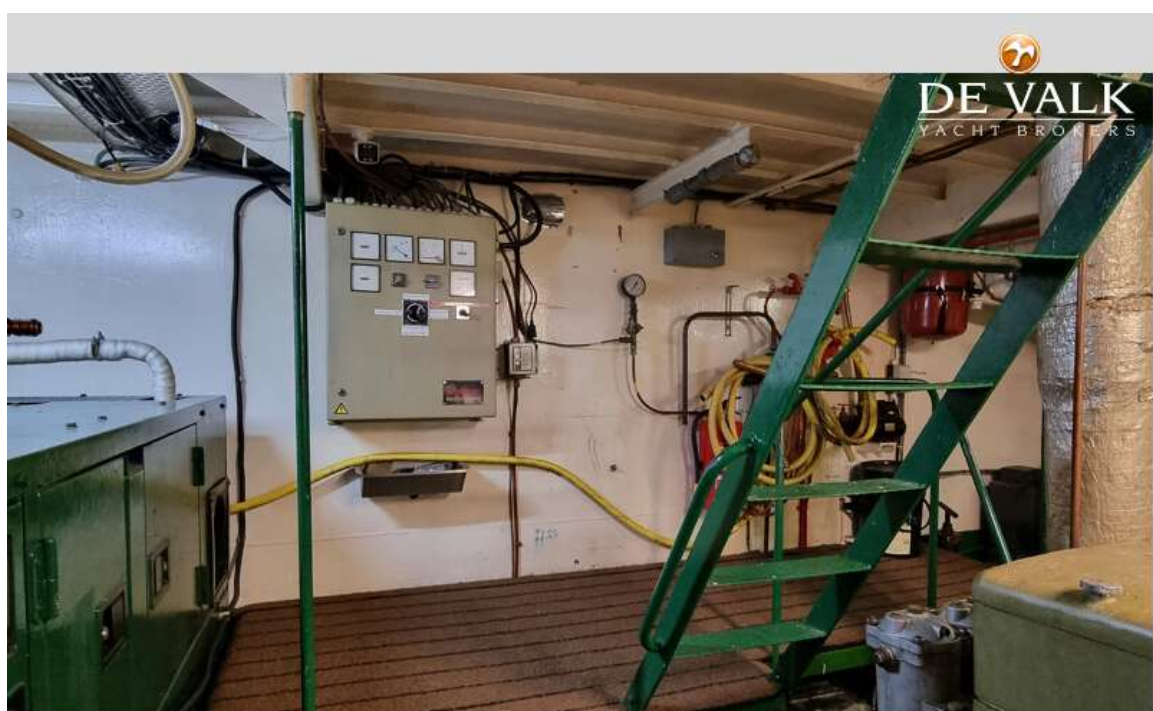
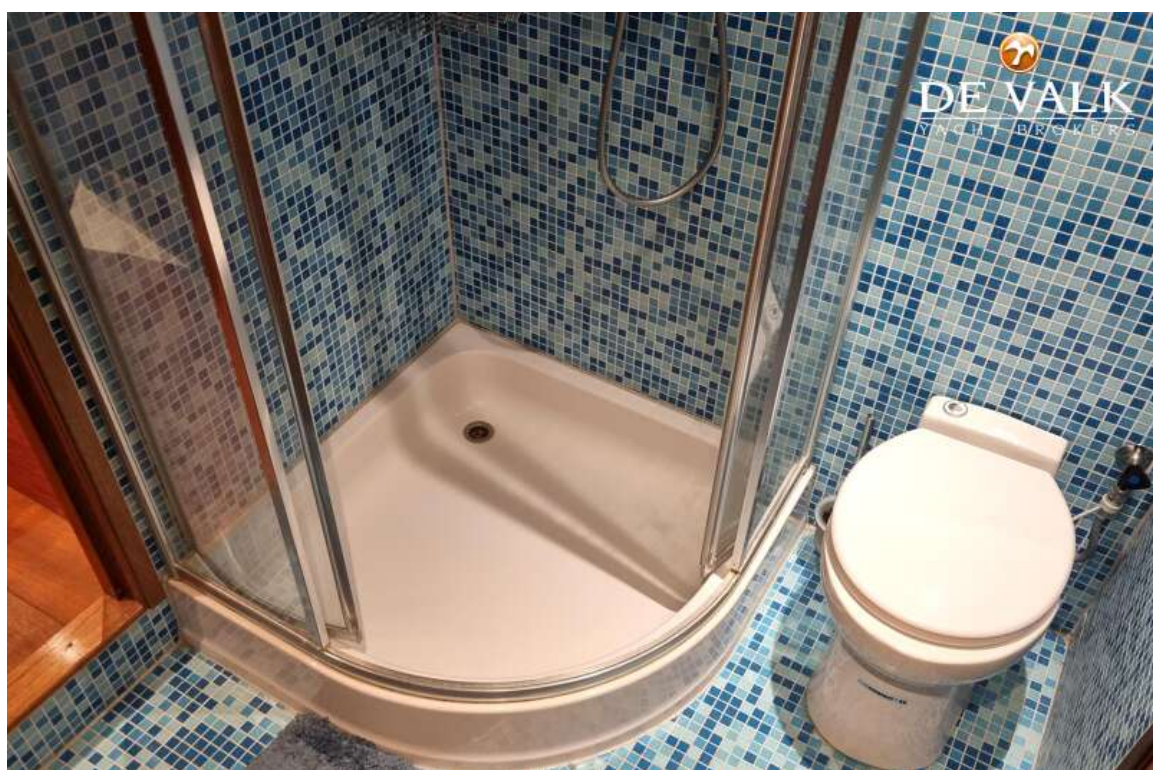


# LONG RANGE PILOTHOUSE TRAWLER



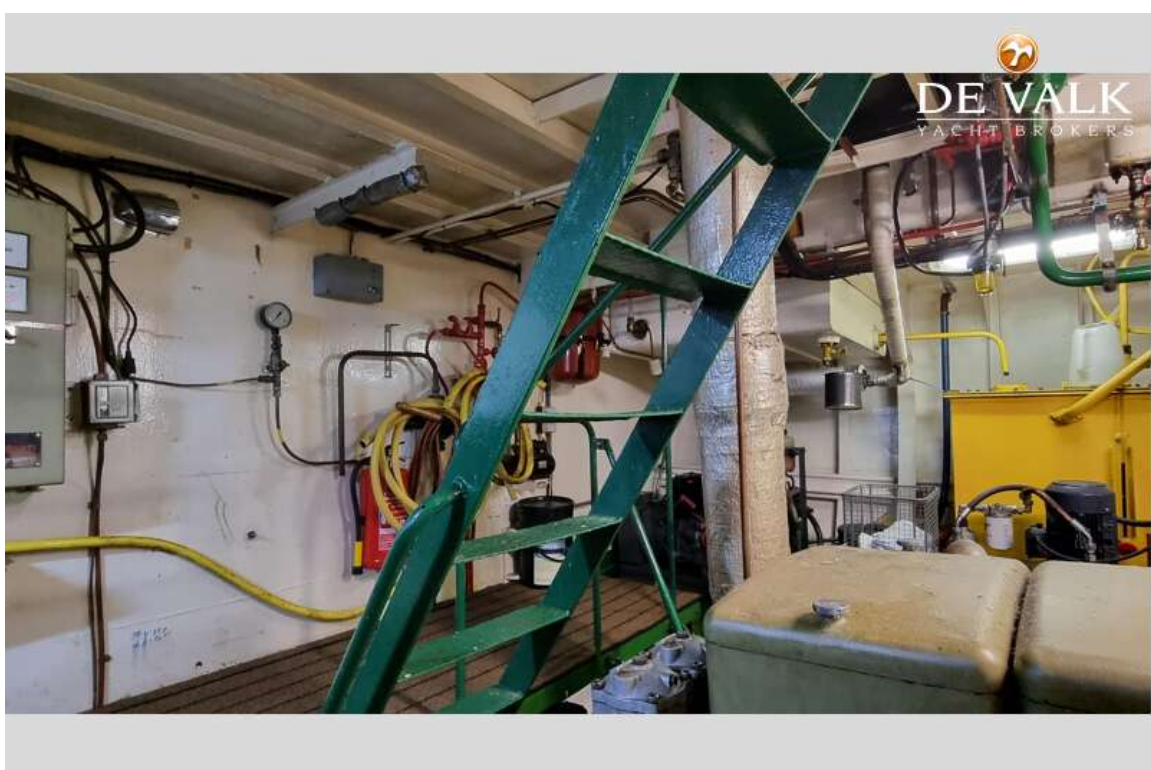
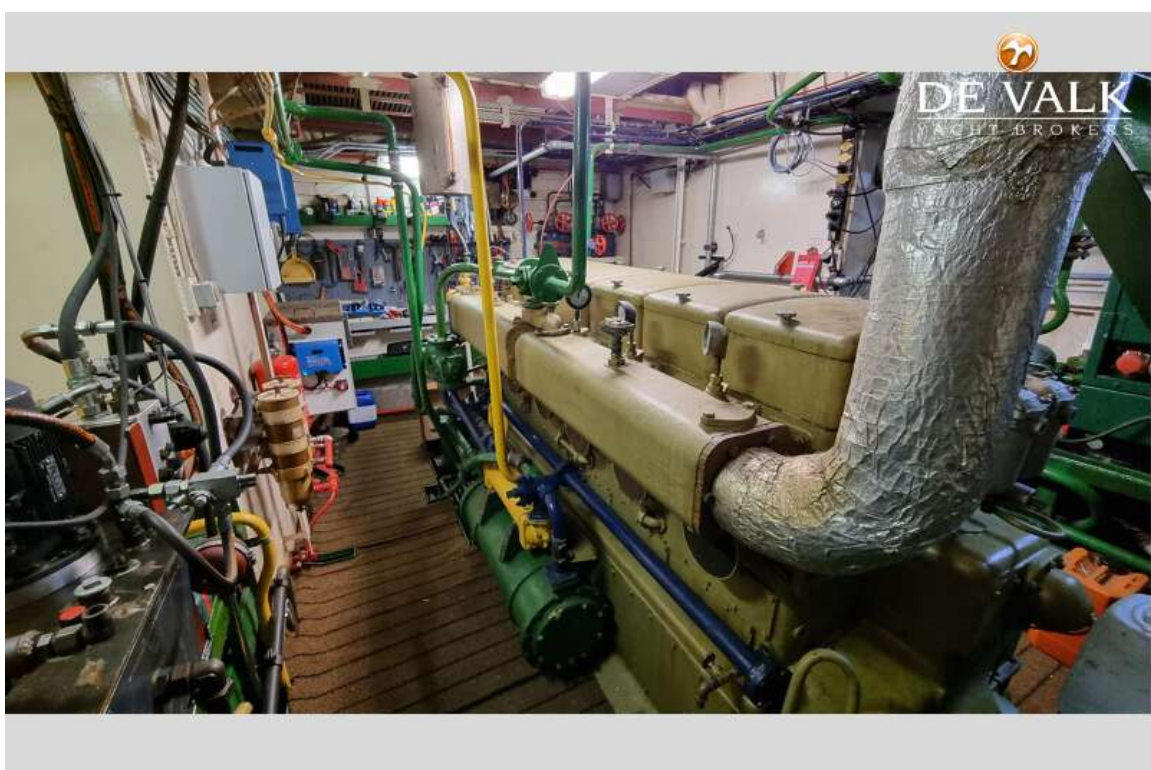


# LONG RANGE PILOTHOUSE TRAWLER

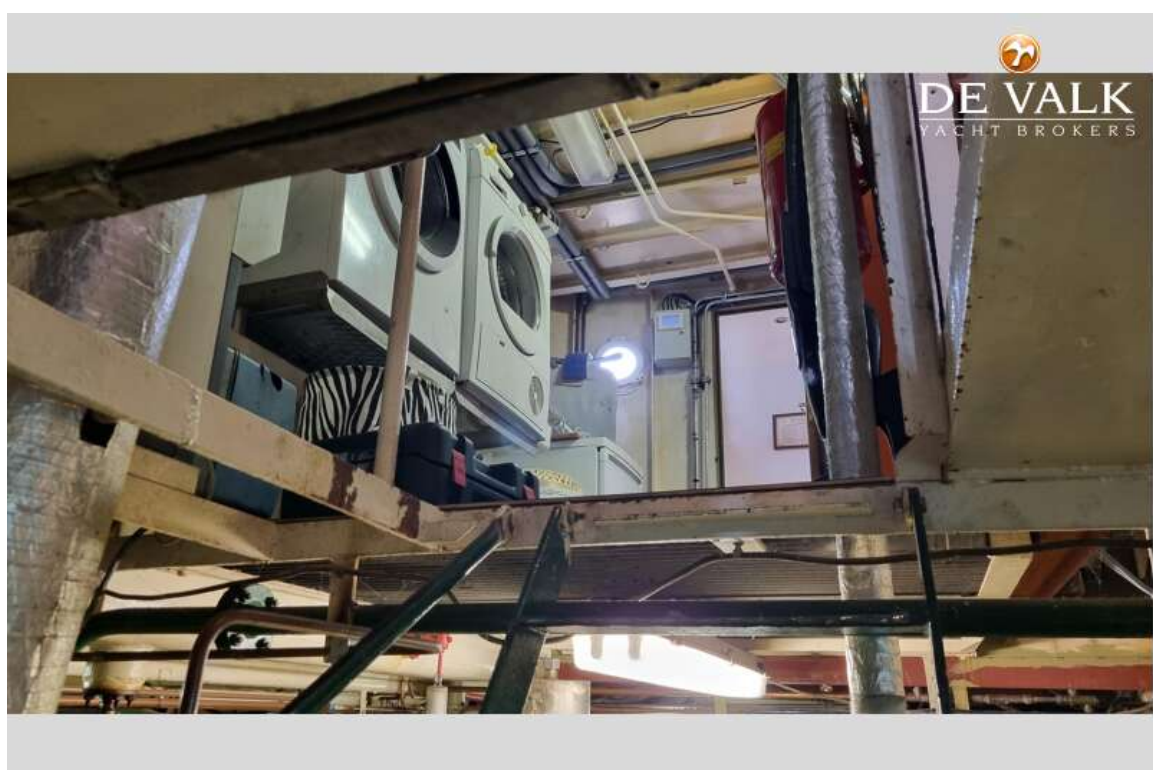
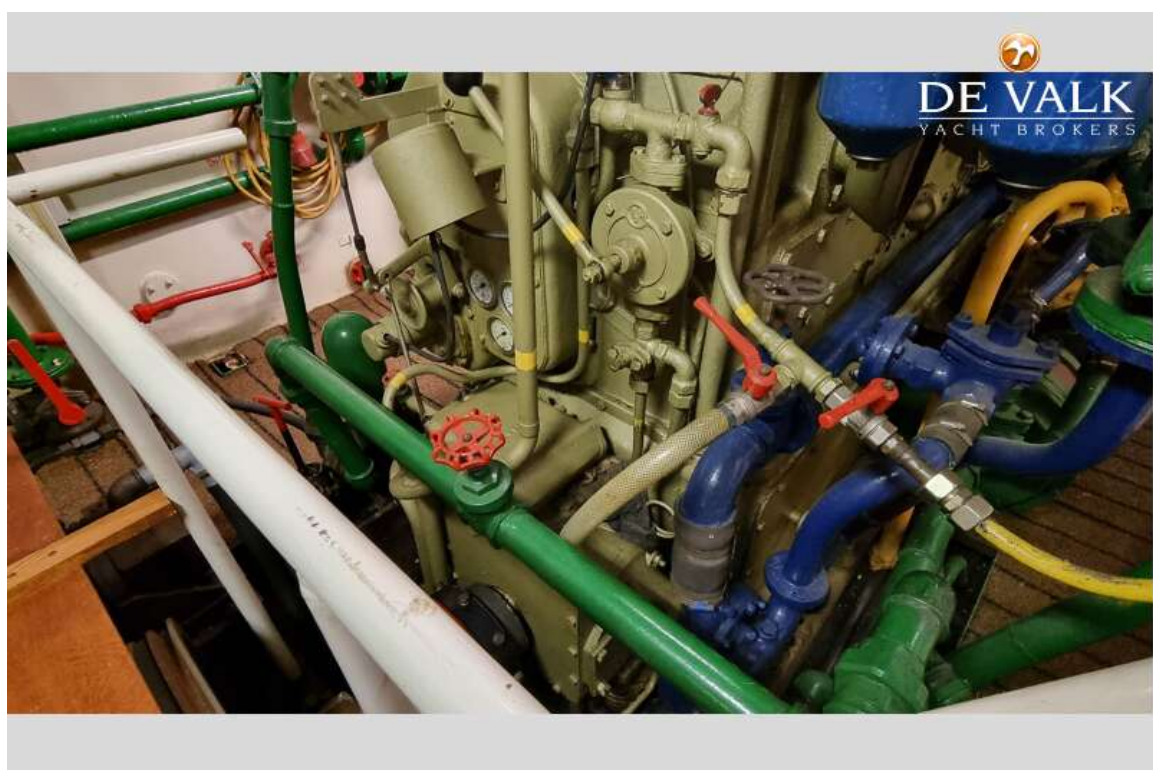




# LONG RANGE PILOTHOUSE TRAWLER



# LONG RANGE PILOTHOUSE TRAWLER





# LONG RANGE PILOTHOUSE TRAWLER

