



DE VALK
YACHT BROKERS



BENETEAU OCEANIS 50



DE VALK
YACHT BROKERS

BENETEAU OCEANIS 50

BROKER'S COMMENTS

This, in better than new condition, beautiful Beneteau Oceanis 50 has undergone some major improvements in recent years. The aft cockpit can be transformed into a comfortable and cosy dining area. "Freya" is extremely suitable for long stays on board in comfort and independence thanks to the present airco and generator. Due to her electric winches she is very easy to sail. This immaculate Beneteau Oceanis 50 is now ready for you to be admired and to be inspected.

Johan Schootstra

SPECIFICATIONS

Dimensions	15.10 x 4.49 x 1.70 (m)	Builder	Beneteau
Built	2009	Cabins	3
Material	GRP	Berths	7
Engine(s)	1 x Yanmar 4JH4-HTE diesel	Hp/Kw	110.00 (hp), 80.96 (kw)
Asking price	sold (VAT)	Lying	elsewhere / Not at sales office

CONTACT

Sales office	De Valk Hindeloopen B.V.	Telephone	+31 514 52 40 00
Address	Oosterstrand 1 8713 JS Hindeloopen NL	E-mail	hindeloopen@devalk.nl

DISCLAIMER

These particulars are given in good faith as supplied but cannot be guaranteed.



GENERAL

Model	BENETEAU OCEANIS 50
Type	sailing yacht
LOA (m)	15,10
LWL (m)	13,30
Beam (m)	4,49
Draft (m)	1,70
Year built	2009
Builder	Beneteau
Country	France
Designer	Berret & Racoupeau Design
Displacement (t)	12,5
Ballast (tonnes)	cast iron 4,3 t.
CE norm	A
Hull material	GRP
Hull colour	white
Hull shape	round-bilged
Keel type	fin keel
Superstructure material	GRP
Deck material	GRP
Deck finish	teak new 2018 sanded 2024
Superstructure deck finish	non-skid moulded in
Cockpit deck finish	teak new 2018 sanded 2024
Antifouling (year)	Hempel Silic One 2023
Window frame	aluminium
Window material	perspex
Deckhatch	7x
Portholes	yes
Fuel tank (litre)	polyethylene 235 ltr.
Fuel tank 2 (litre)	aluminium 100 ltr.
Level indicator (fuel tank)	yes



Freshwater tank (litre)	polyethylene 565 ltr.
Blackwater tank (litre)	polyethylene 2 x 70 ltr.
Blackwater tank extraction	deck extraction
Wheel steering	cable steering 2x with leather and covers
Emergency tiller	yes

ACCOMMODATION

Cabins	3
Berths	7
Interior	teak
Layout	Two aft cabins with shared bathroom, big saloon and owners cabin in front with bathroom
Floor	wood
Open cockpit	yes
Saloon	yes
Headroom saloon (m)	2,05 mtr.
Heating	diesel ducted hot air Webasto Air top Evo 55D 5kw new 2019
Heating 2	diesel ducted hot air Webasto Air top 2000 2kw new 2020
Air-conditioning	reverse cycle airco in all cabins
Navigation center	yes
Chart table	yes
Aft Cabin	2 x
Dinette	yes
Galley	yes
Countertop	corian White
Sink	stainless steel double sink
Cooker	calor gas 4 burner
Oven	Integrated in cooker
Gas alarm	With Truma remote gas Valvefor stove
Microwave	Eko
Fridge	2x Vitrifrigo Top and front loader



BENETEAU OCEANIS 50

Freezer	Waeco
Hot water system	220V + engine Quick 40 ltr.
Water pressure system	electrical
Manual and/or foot pump	yes
Owners cabin	French bed forward cabin Tempur mattress
Bed length (m)	2 mtr.
Wardrobe	hanging/drawers/shelves
Bathroom	en suite
Toilet	Jabsco
Toilet system	electric
Wash basin	yes
Shower	yes
Guest cabin 1	double bed aft cabin Comfort mattress
Bed length (m)	2 mtr.
Wardrobe	hanging and shelves
Guest cabin 2	double bed aft cabin Comfort mattress
Bed length (m)	2 mtr.
Wardrobe	hanging and shelves
Bathroom	shared
Toilet	Jabsco
Toilet system	electric
Wash basin	yes
Shower	yes
Extra info	Leather upholstery in saloon

MACHINERY

No of engines	1
Make	Yanmar
Type	4JH4-HTE
HP	110
kW	80.96



BENETEAU OCEANIS 50

Fuel	diesel
Year installed	2009
Maximum speed (kn)	9,2
Cruising speed (kn)	8
Consumption (l/hr)	4,5
Range (nm)	550
Engine hours	1369
Engine cooling system	freshwater heat exchanger
Drive	shaft
Shaft seal	New stuffingbox 2024
Engine controls	bowden cable
Gearbox	mechanical
Bowthruster	electric MaxPower
Propeller type	folding Flexofold
Propeller blades	3
Propeller shaft material	stainless steel
Shaft lubrication	water
Manual bilge pump	yes
Electric bilge pump	yes
Electrical installation	12 V DC and 220 V AC
Generator	Onan 5,5 Kva
Running hours generator	140 hours 06-2024
Start battery	New 2020
Service battery	4 x 180 Ah Exide Dual AGM new 2020
Generator battery	New 2020
Bowthruster battery	New 2019
Battery monitor	Victron
Battery charger	Mastervolt 12/50-3 and Cristec 12/40A
Inverter	2x Cristec 12 - 200VA
Solar panel	2 x 275W 2x Victron Smart charger
Shorepower	with cable



NAVIGATION

Compass	2 x
Electric compass	Data from: Raymarine i70s new 2017
Depth sounder	Data from: Raymarine i70s new 2017
Log	Data from: Raymarine i70s new 2017
Windset	Data from: Raymarine i70s new 2017
VHF	Garmin 215 with repeater station in cockpit new 2019 Antenna for VHF new 2022
Autopilot	Raymarine EV with p70s display new 2017
Rudder angle indicator	On Raymarine autopilot
Radar	Raymarine
Plotter/GPS	Garmin 7412xsv new 2015
Radar/GPS/plotter	Raymarine Axion new 2022 Raymarine E80
Navtex	Furuno NX 300
AIS transceiver	Em-Trac new 2020 Antenna for ais new 2022
EPIRB	New 2018
Navigation lights	yes
Searchlight	yes

EQUIPMENT

Sprayhood	the old sprayhood is still present, as good as new. At the owner house
Fixed hardtop	Custom Fibreglass 2022
Bimini	Almost new currently at owners house
Winter cover	yes
Cockpit cushions	yes
Cockpit table	yes
Bathing platform	yes
Boarding ladder	stainless steel
Deck shower	yes
Anchor	Delta



Anchor chain	12 mm 110 mtr.
Chain counter	Quick
Windlass	electrical Lewmar with wireless remote control
Capstan	yes
Dinghy	inflatable Quicksilver 2,7 mtr.
Outboard	Mercury
Sea railing	wire
Grab rail (superstructure)	teak
Railing side opening gates	yes
Pushpit	yes
Pulpit	yes
Life raft	container Plastimo transocean
Life raft (pers)	6
Last life raft survey	2023
Lifebuoy	yes
Rope cutter	yes
Radar reflector	yes
Fenders	yes
Mooring lines	yes
Spare parts	yes
TV	yes
Radio-cd player	Sony 2020
DVD player	yes
Cockpit speakers	2020
Speakers in salon	yes
Clock - barometer	yes
Fire extinguisher	yes
Latest extinguisher survey	2020
Extinguisher in engine room	And generator room

RIGGING



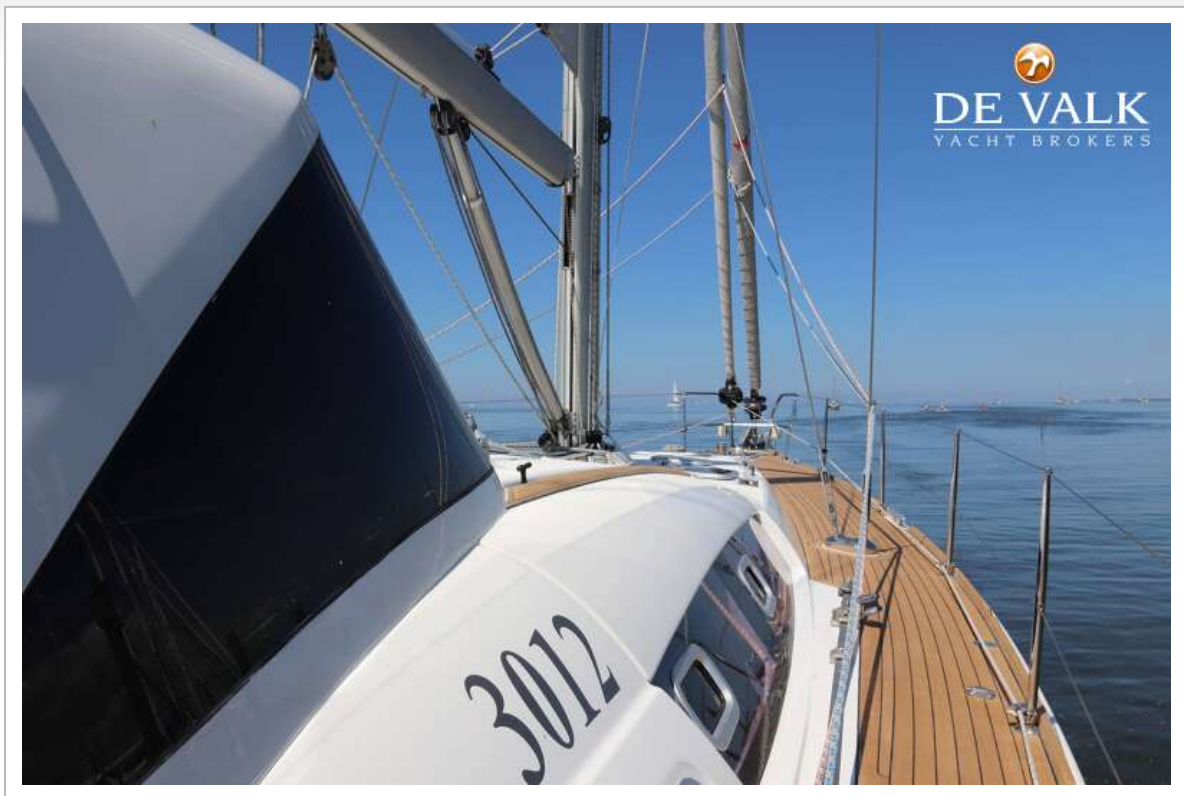
Rigging	cutter
Standing rigging	wire new 06-2024
Brand mast	Sparcraft
Material mast	aluminium
Spreaders	2 sets
Mainsail	Elvstrøm EPEX new 2018
Fully battened mainsail	yes
Stoway mast	yes
Cutterstay	yes
Jib	On cutter furler North Sails NPL NorLam Xi11 new 2019
Genoa	Elvstrøm EPEX new 2018
Genoa furler	Facnor LS 290
Cutter furler	Furlex 304S
Reefing System	main in-mast furling
Backstay adjuster	mechanical
Boomvang	gasspring
Primary sheet winch	2x harken ST46
Genoa sheetwinches	2x Harken ST53 Electric
Halyard winches	2x Harken ST44 one electric
Spi-pole	aluminium



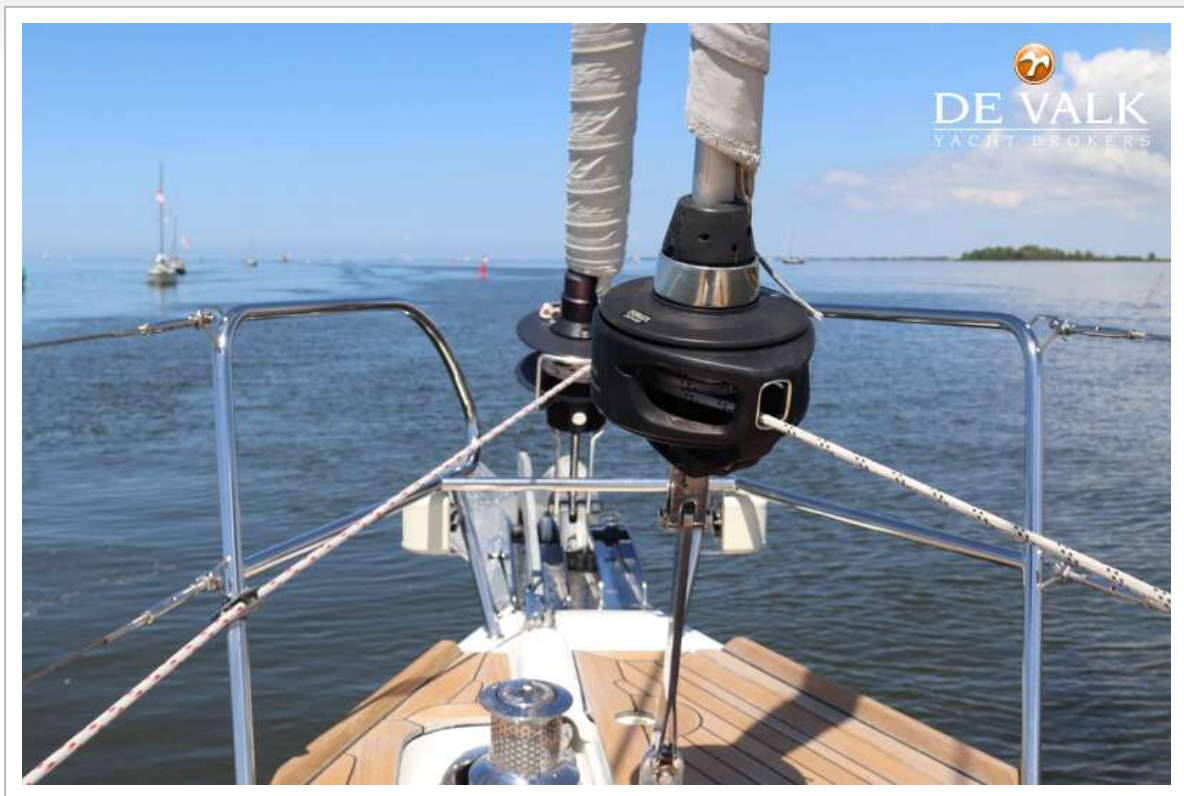
BENETEAU OCEANIS 50



BENETEAU OCEANIS 50



BENETEAU OCEANIS 50



BENETEAU OCEANIS 50



BENETEAU OCEANIS 50



BENETEAU OCEANIS 50



BENETEAU OCEANIS 50



BENETEAU OCEANIS 50



BENETEAU OCEANIS 50



BENETEAU OCEANIS 50



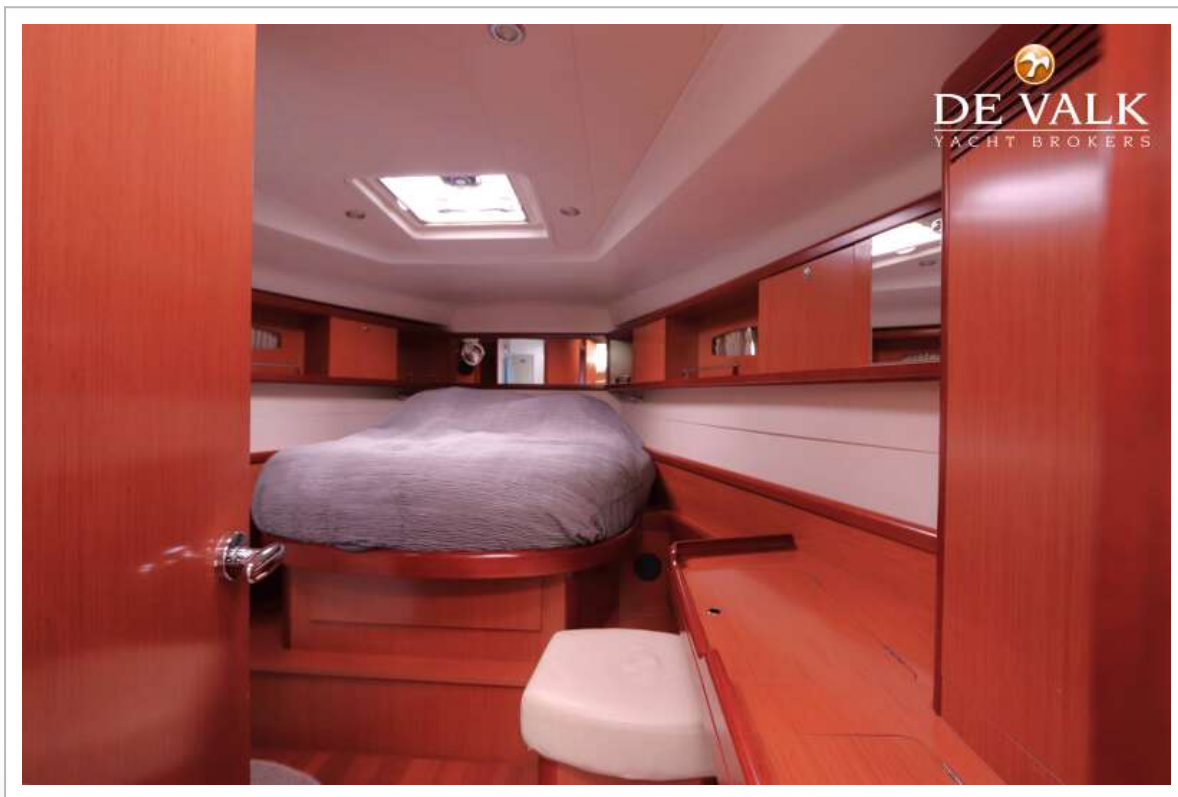
BENETEAU OCEANIS 50



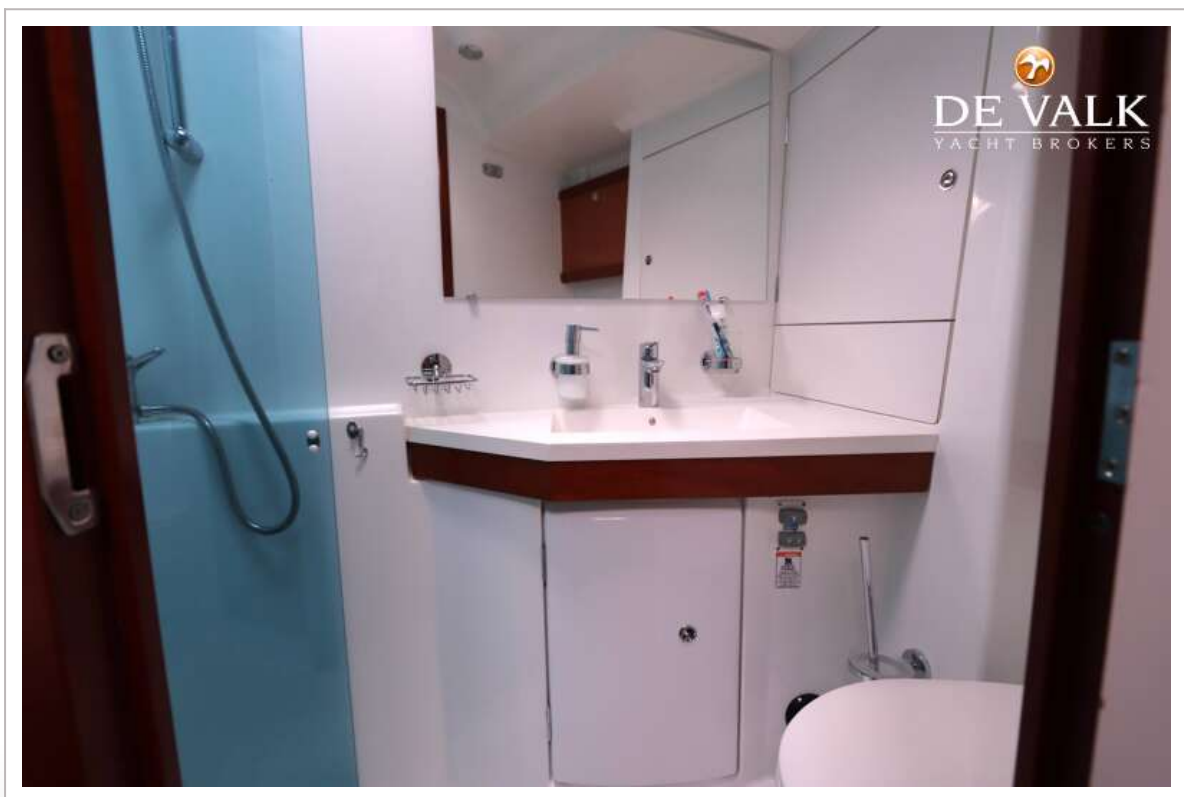
BENETEAU OCEANIS 50



BENETEAU OCEANIS 50



BENETEAU OCEANIS 50



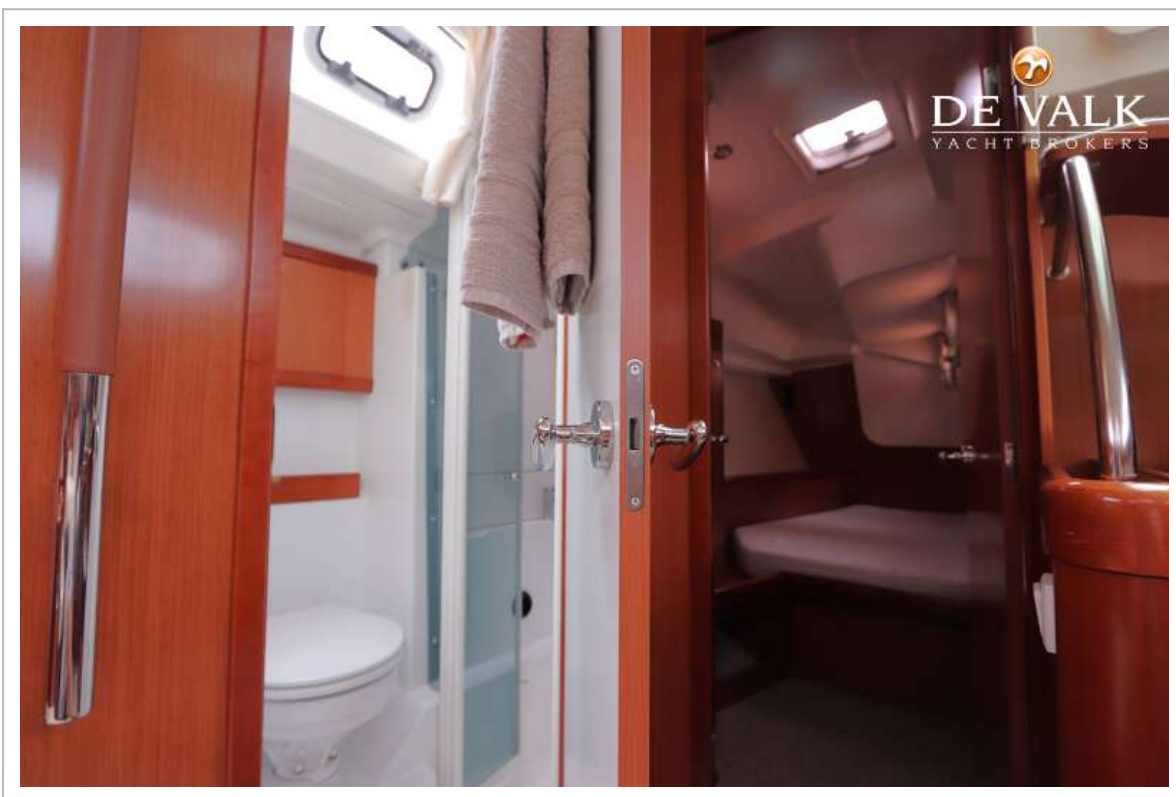
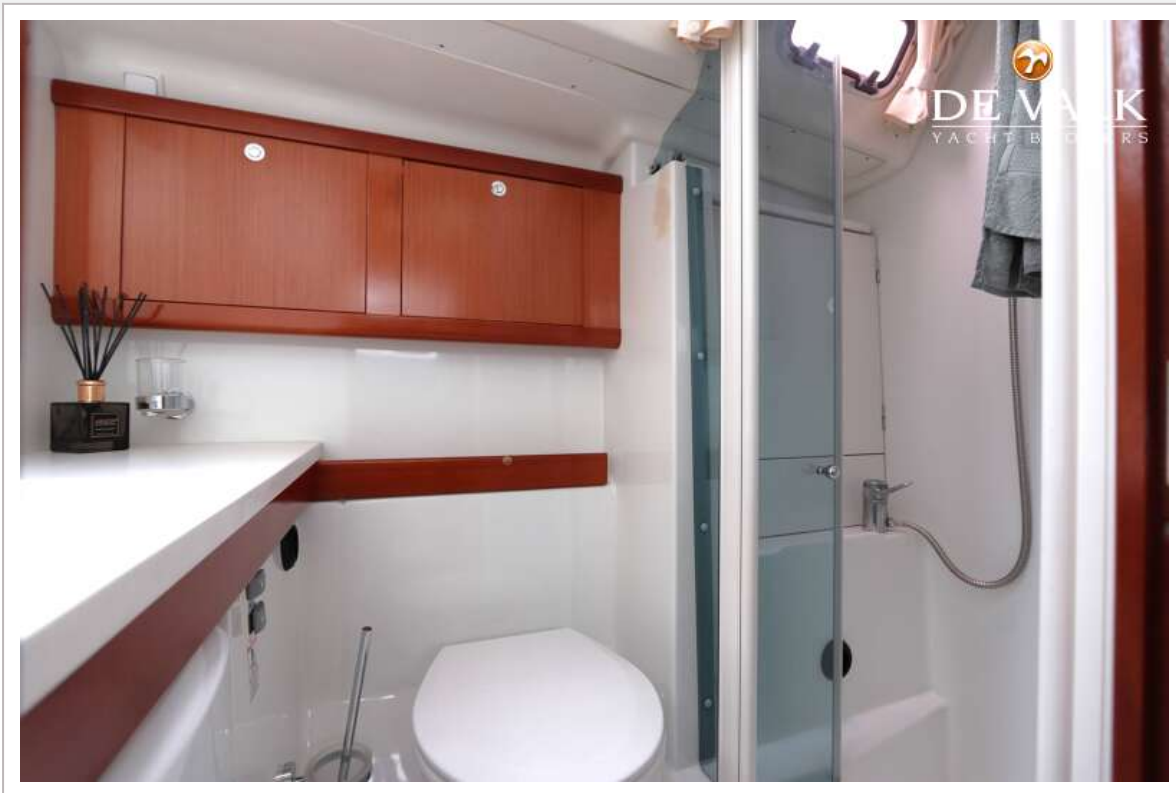
BENETEAU OCEANIS 50



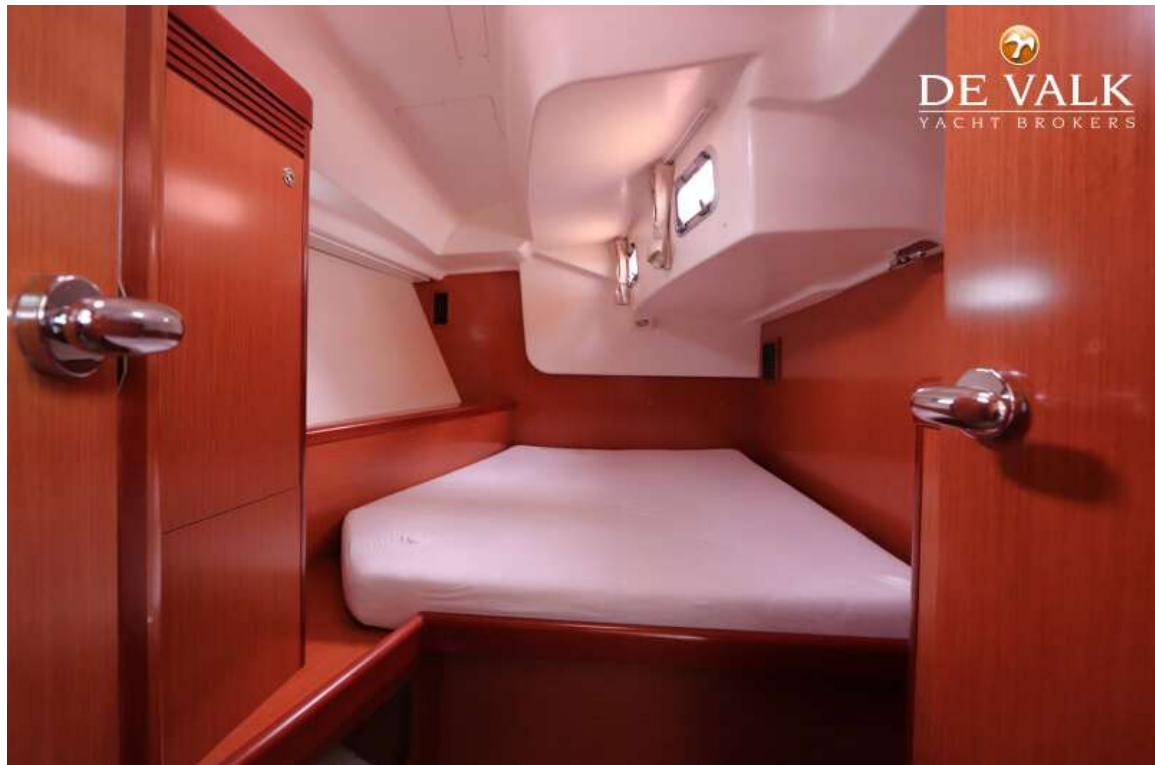
BENETEAU OCEANIS 50



BENETEAU OCEANIS 50



BENETEAU OCEANIS 50



BENETEAU OCEANIS 50

