



DE VALK
YACHT BROKERS



HAKVOORT 65



DE VALK
YACHT BROKERS

BROKER'S COMMENTS

The Hakvoort 66 "Challenger" is built at the famous Hakvoort yard in Monnickendam, the Netherlands and designed by Pieter Beeldsnijder. Due to her insulation, four cabin layout, generator, wash- and dryer, central heating, "Challenger" is very comfortable for longer trips and longer stays on board. She is equipped with a good set of navigation equipment, double Detroit 650 hp diesel engines what makes her the perfect motoryacht to explore the European waterways. Owner is open to payment in crypto currency.

Reinier van der Wolf

SPECIFICATIONS

Dimensions	20.08 x 5.35 x 1.50 (m)	Builder	Hakvoort Shipyards BV - Monnickendam
Built	1988	Cabins	4
Material	Aluminium	Berths	8
Engine(s)	2 x Detroit 8V92TI diesel	Hp/Kw	2 x 650.00 (hp), 478.40 (kw)
Asking price	€ 299.000 (VAT)	Lying	at sales office

CONTACT

Sales office	De Valk Monnickendam B.V.	Telephone	+31 (0)299 65 63 50
Address	Hoogedijk 6 1145 PM Katwoude NL	E-mail	monnickendam@devalk.nl

DISCLAIMER

These particulars are given in good faith as supplied but cannot be guaranteed.



GENERAL

Model	HAKVOORT 65
Type	motor yacht
LOA (m)	20,08
Beam (m)	5,35
Draft (m)	1,50
Headroom (m)	2,10
Year built	1988
Builder	Hakvoort Shipyards BV - Monnickendam
Country	The Netherlands
Designer	Pieter Beeldsnijder
Displacement (t)	48
CE norm	NA
Hull material	aluminium
Hull colour	white
Hull shape	hard chine
Superstructure material	aluminium
Rubbing strake	aluminum
Deck material	aluminium
Deck finish	non-skid paint
Superstructure deck finish	paint
Cockpit deck finish	teak
Antifouling (year)	Sigma Glide systeem (2020)
Window frame	aluminium
Window material	tempered glass - Rhigo
Deckhatch	3x Lewmar
Portholes	yes
Insulation	foam - from waterline to superstructure
Flybridge	yes
Radar arch	non collapsible
Fuel tank (litre)	aluminium - 7000 (integrated in hull geïntegreerd integriert im Rumpf)



Level indicator (fuel tank)	yes
Fuel daytank (litre)	aluminium - (integrated in hull geïntegreerd integriert im Rumpf)
Freshwater tank (litre)	aluminium - 2000 (integrated in hull geïntegreerd integriert im Rumpf)
Level indicator (freshwater)	yes
Blackwater tank (litre)	aluminium - 1000 (integrated in hull geïntegreerd integriert im Rumpf)
Blackwater tank extraction	pump
Wheel steering	hydraulic
Inside helm position	yes
Flybridge helm position	hydraulic
More info on hull	In 2015, the underwater hull was sandblasted and coated with a two-component epoxy paint system. A silicone antifouling was placed over this.
More info on paintwork	2020 hull + superstructure painted
Extra info	In May 2025, the boat certificate was issued on this vessel.

ACCOMMODATION

Cabins	4
Berths	8
Interior	Modern hotel chic modern hotel chique moderner Hotel-Chic
Floor	carpet
Aft deck	yes
Saloon	yes
Headroom saloon (m)	> 2.00
Heating	central heating + kick space by smart
Air-conditioning	Marine Airrrr (needs service)
Dining room	yes
Dinette	saloon after deck flybridge
Opening door to aft deck	yes
Galley	U-shaped



Countertop	plastic
Sink	stainless steel - double
Cooker	electric - Pelgrim: 4 burner pits Brenner
Oven	yes
Extractor	yes
Fridge	Bosch
Freezer	Bosch
Hot water system	on central heating - ACV Alfa Combi
Water pressure system	electrical
Dishwasher	Fagor
Crockery	yes
Owners cabin	French bed - mid ship midscheeps mitten im Schiff
Bed length (m)	2.00
Wardrobe	hanging and shelves - with lighting inside met verlichting mit Innenbeleuchtung
Toilet	en suite
Toilet system	electric
Wash basin	in the cabin
Shower	en suite
Bath tub	en suite
Guest cabin 1	bunk bed - port side bakboord backbordseite
Bed length (m)	2.00
Wardrobe	hanging and shelves
Bathroom	en suite
Toilet	en suite
Toilet system	electric
Wash basin	in the bathroom
Shower	en suite
Guest cabin 2	bunk bed - starboard stuurboord Steuerbord
Bed length (m)	2.00
Wardrobe	hanging and shelves
Bathroom	en suite



Toilet	en suite
Toilet system	electric
Wash basin	in the bathroom
Shower	en suite
Guest cabin 3	twin single - front voor Forne
Bed length (m)	2.00
Wardrobe	hanging and shelves
Bathroom	en suite
Toilet	en suite
Toilet system	electric
Wash basin	in the bathroom
Shower	en suite
Washing machine	Miele T1 Excellent
Dryer	Miele Novtronic
Extra info	"Challenger" had a major interior refit in 2009, giving it a modern luxury hotel feel.

MACHINERY

No of engines	2
Make	Detroit
Type	8V92TI
HP	650
kW	478.40
Fuel	diesel
Year installed	1988
Engine hours	BB: 7321 SB: 9266
Engine cooling system	freshwater heat exchanger
Drive	shaft
Engine controls	electrical & bowden cable - Vetus + RMC remote motor control
Gearbox	hydraulic - ZF
Bowthruster	electric - SidePower + remote



Exhaust	watercooled
Propeller type	fixed
Propeller blades	4
Propeller shaft material	stainless steel
Shaft lubrication	water
Electric bilge pump	yes
Bilge alarm	yes
Electrical installation	12 + 24 + 230v
Generator	wet exhaust - Cummins Onan 13,5 Kva (2014)
Running hours generator	according to hour gauge : 7518
Start battery	Exide AGM marine 3x (2/2024)
Service battery	4x Centrac dual power semi tractie 12V/225Ah (2/2024)
Bowthruster battery	4x 12V/110Ah AGM Deep Cycle Batt
Battery monitor	Mastervolt
Battery charger/inverter	Mastervolt Mass Combi 24 4000-120
Shorepower	with cable
Extra info	In 2021, professional major maintenance was carried out on the engines.

NAVIGATION

Compass	Ship head + Suunto
Depth sounder	Raymarine
Log	Simrad CE44
VHF	Skanti VHF1000DSC (pilothouse) Garmin (flybrigde)
VHF handheld	Icom
Autopilot	2x Raymarine P70 + 1x remote S100 Neco Marine
Radar	Simrad DS44
GPS	Simrad JRC J-Nav 500
Plotter	Simrad CE44 Simrad DS44
AIS receiver	EM-Trak A200 Class A
Navigation lights	yes



Searchlight

Ray-Line

EQUIPMENT

Cockpit cover	yes
Bimini	on flybridge
Cockpit cushions	yes
Bathing platform	integrated in hull - with teak met teak mit Teak
Gangway	with dinghy lift
Anchor	yes
Anchor chain	yes
Windlass	electrical
Dinghy	yes
Outboard	yes
Sea railing	aluminum
Grab rail (superstructure)	stainless steel
Railing side opening gates	yes
Lifebuoy	yes
Wiper	3x
Horn	electric
Binocular	yes
Fenders	yes
Mooring lines	yes
Spare parts	yes
Tools	yes
TV	yes
Radio-cd player	yes
Speakers in salon	Bose
Fire extinguisher	yes



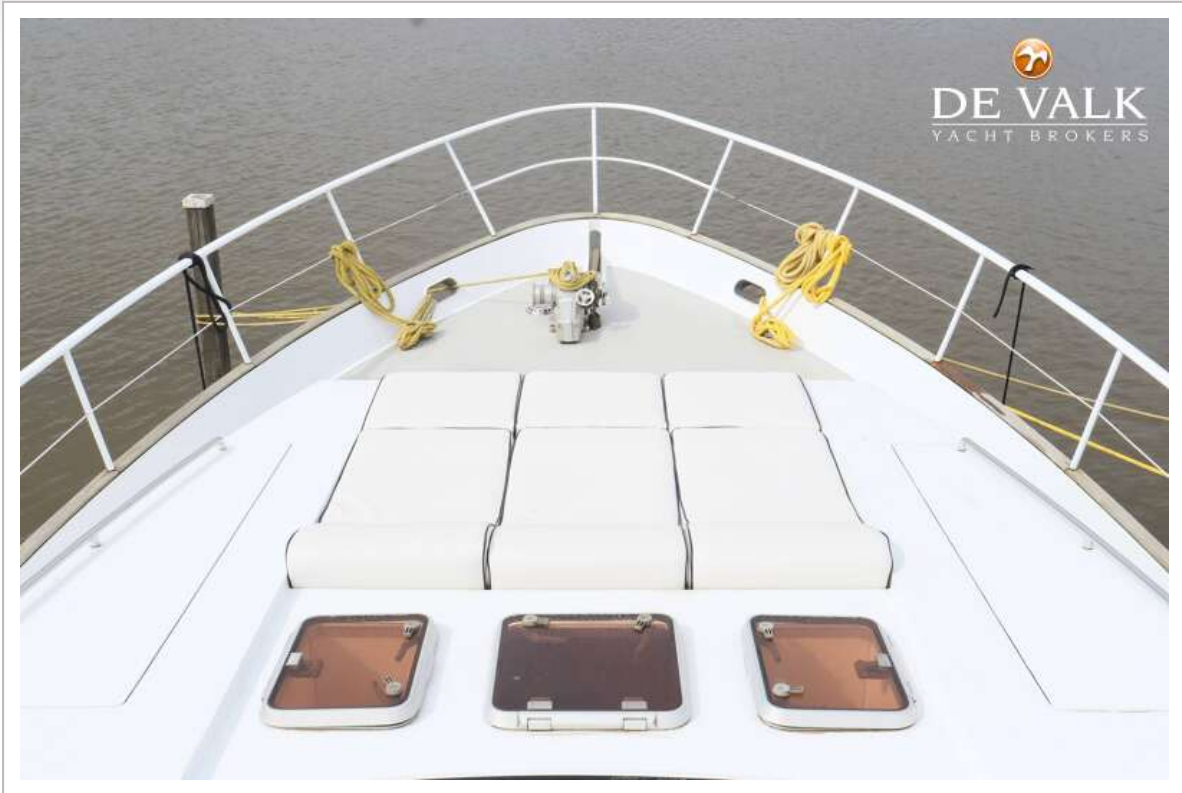
HAKVOORT 65



HAKVOORT 65



HAKVOORT 65



HAKVOORT 65

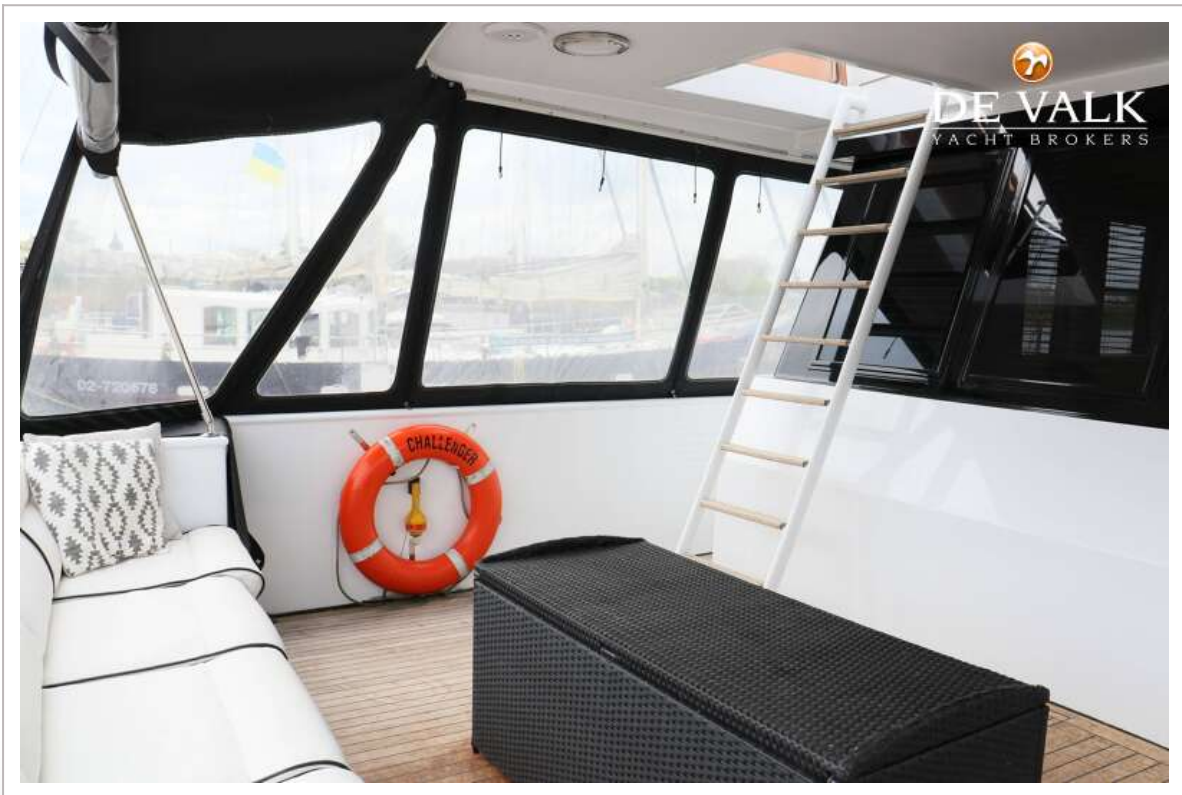




HAKVOORT 65



HAKVOORT 65

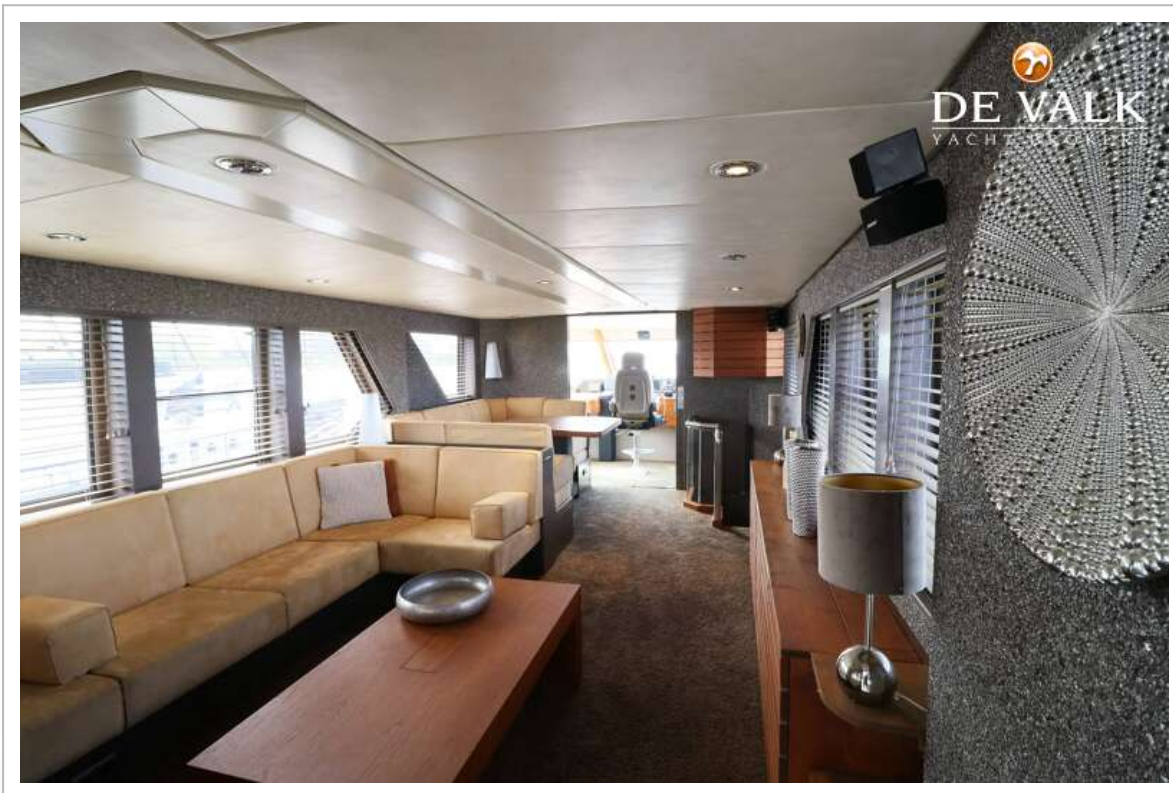


HAKVOORT 65



HAKVOORT 65

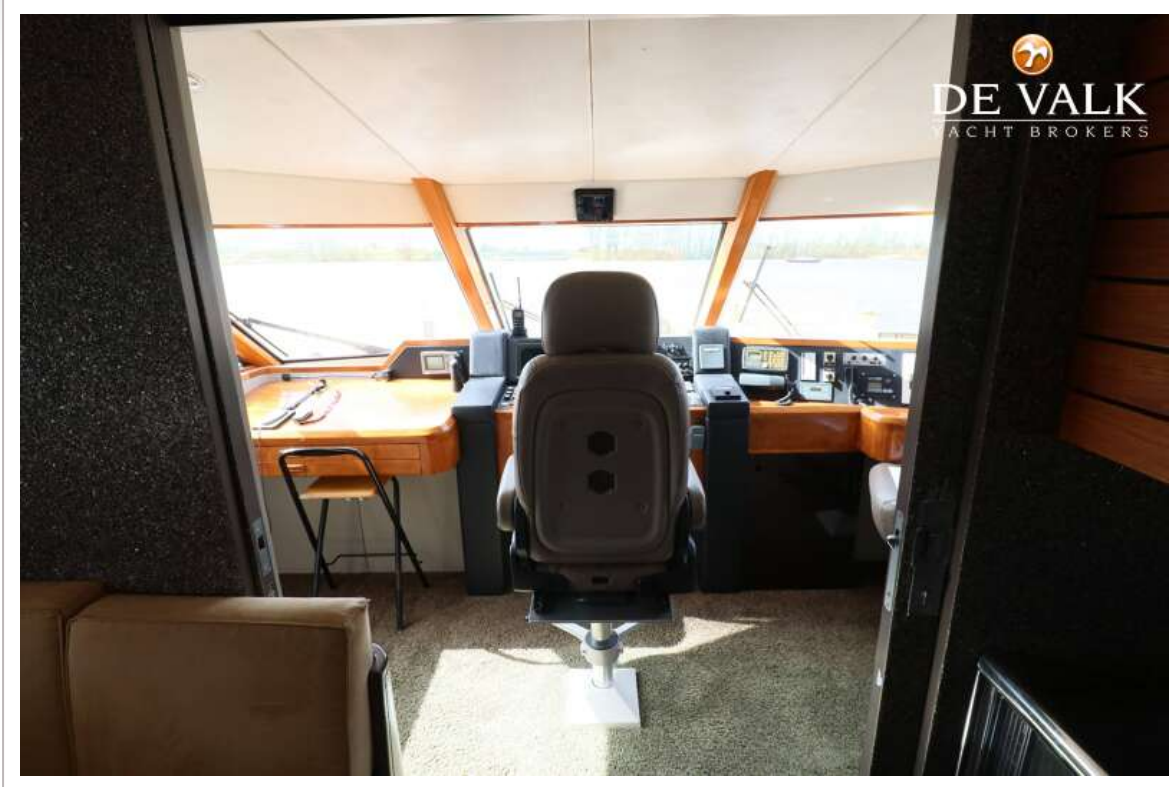




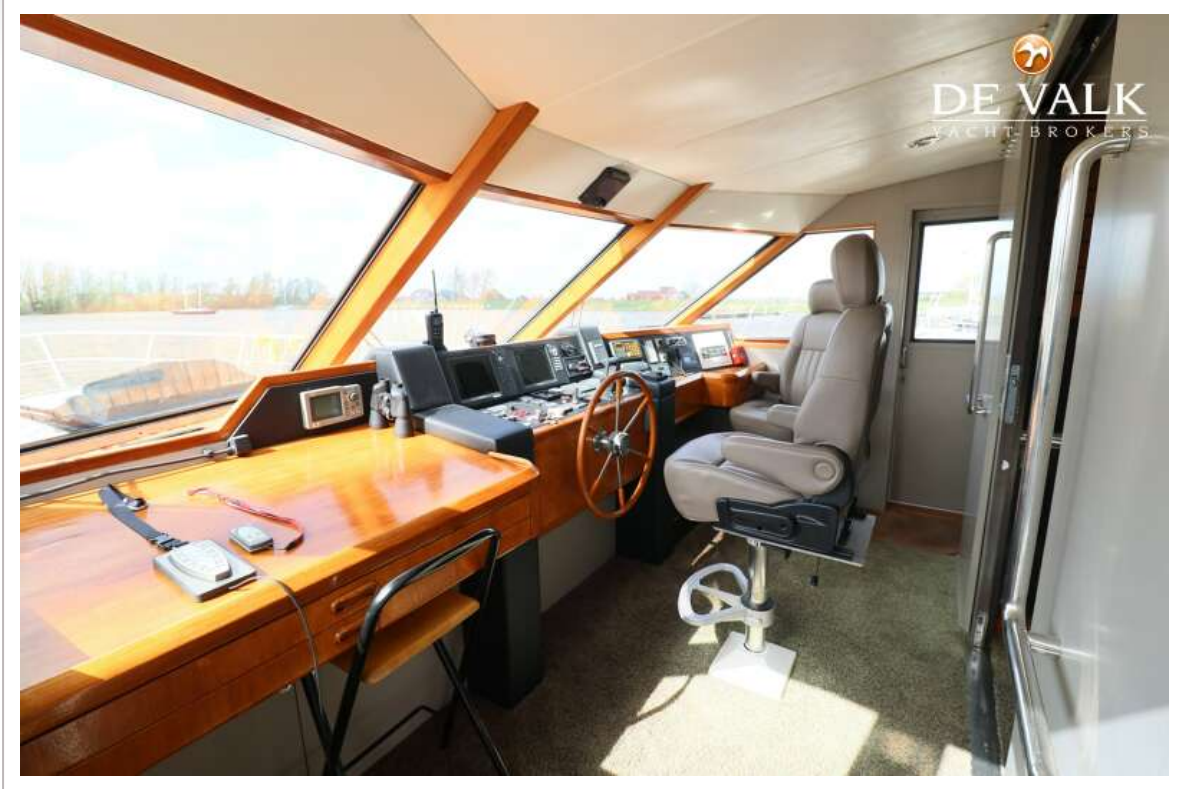
HAKVOORT 65



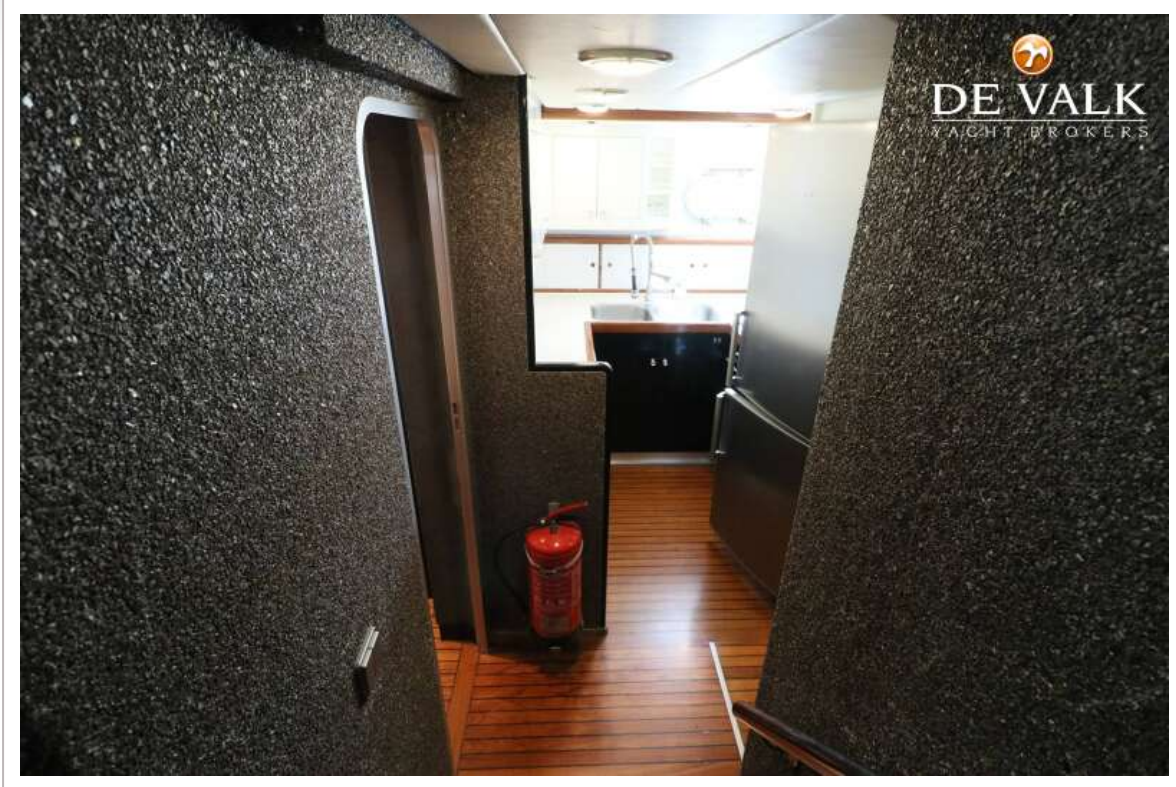
HAKVOORT 65

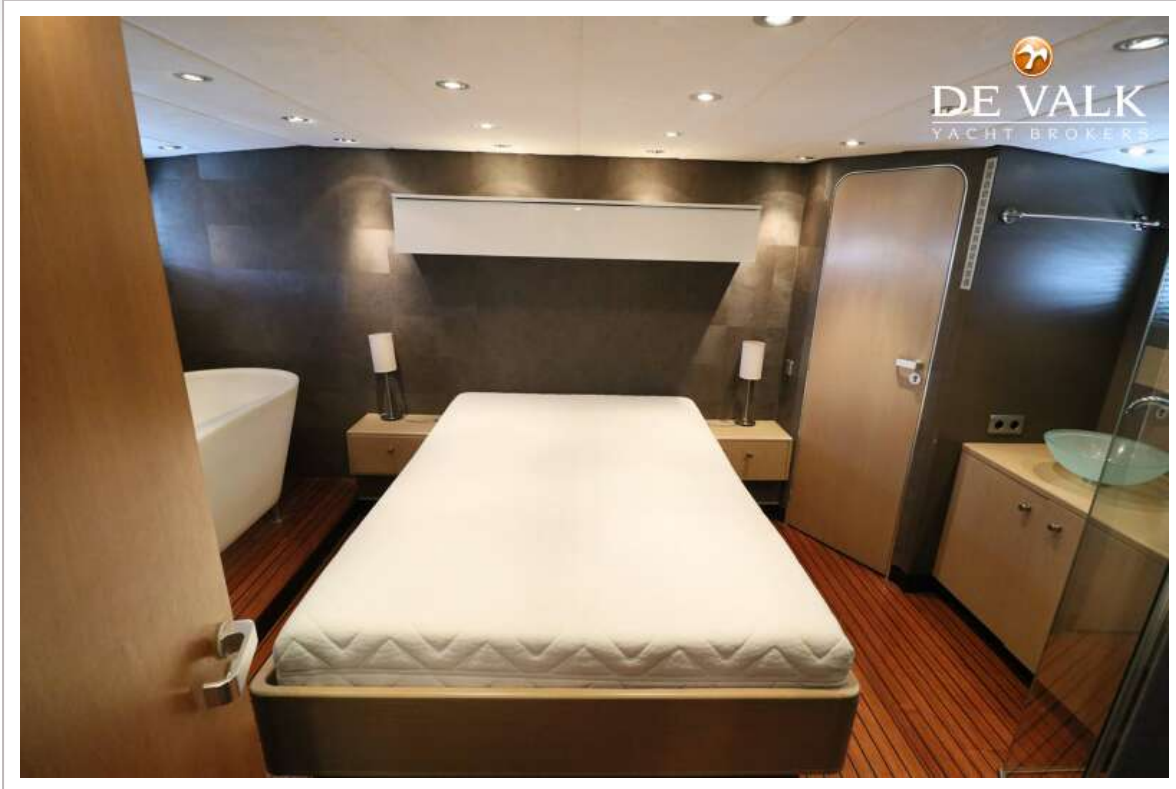


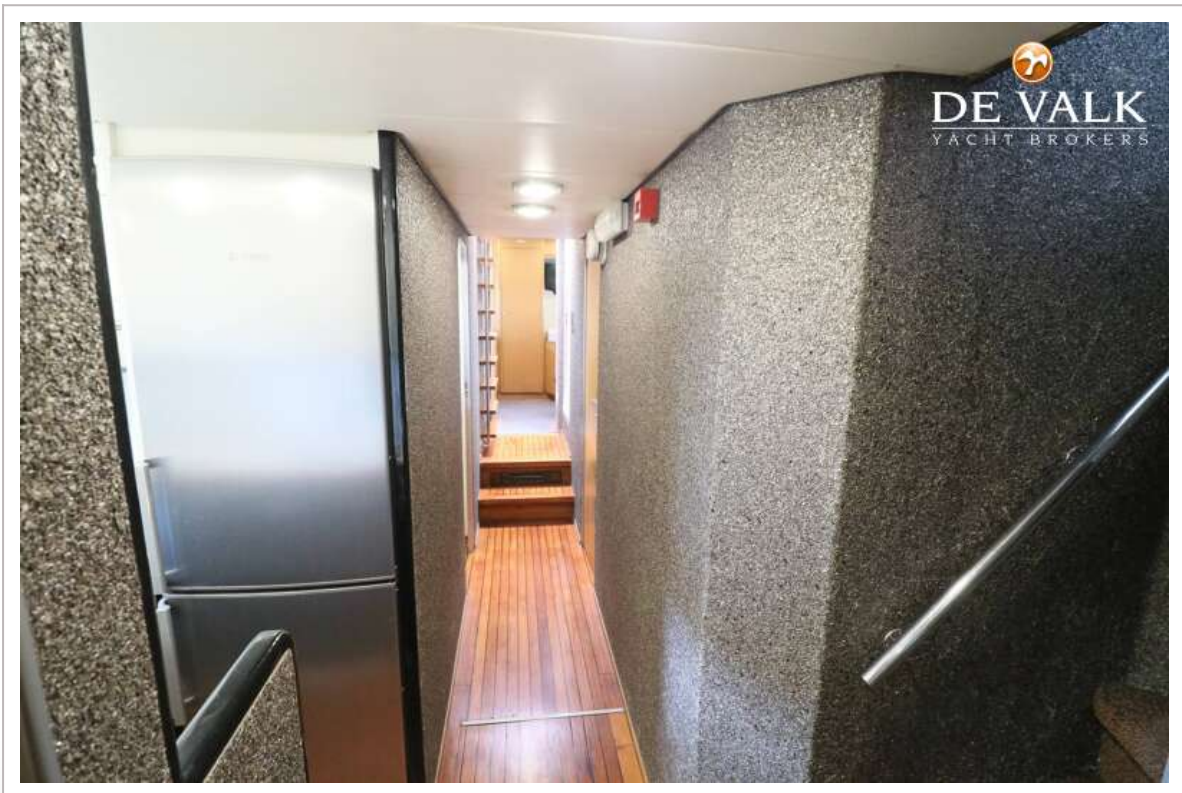
HAKVOORT 65



HAKVOORT 65







HAKVOORT 65



HAKVOORT 65

