



DE VALK
YACHT BROKERS



BENETEAU OCEANIS 60



DE VALK
YACHT BROKERS

BENETEAU OCEANIS 60

BROKER'S COMMENTS

Discover the luxury and performance of this Beneteau Oceanis 60: an elegant sailing yacht with timeless design, abundant deck space, and generous accommodations. The interior is finished to a high standard, offering plenty of light and ventilation, and with three luxurious cabins (plus crew quarters) everyone will find their place on board. A true passagemaker for blue-water sailing in luxury and comfort. Perfect for both relaxed cruising and adventurous crossings. Her owners have sailed her short-handed, making her safe and easy to handle with her current rig. Located in Pescara, Italy.

Marc Weijenberg

SPECIFICATIONS

Dimensions	18.24 x 4.99 x 2.70 (m)	Builder	Beneteau
Built	2016	Cabins	3
Material	GRP	Berths	8
Engine(s)	1 x VW TDI 140-5 diesel	Hp/Kw	135.00 (hp), 99.36 (kw)
Asking price	€ 330.000 (VAT Not paid)	Lying	Italy

CONTACT

Sales office	De Valk Thuishaven	Telephone	+31 35 5829042
Address	Peperstraat 7 1411 PX Naarden NL	E-mail	thuishaven@devalk.nl

DISCLAIMER

These particulars are given in good faith as supplied but cannot be guaranteed.



BENETEAU OCEANIS 60

GENERAL

Model	BENETEAU OCEANIS 60
Type	sailing yacht
LOA (m)	18,24
LWL (m)	16,43
Beam (m)	4,99
Draft (m)	2,70
Air draft (m)	29,50
Headroom (m)	2,08
Year built	2016
Launched	2016
Builder	Beneteau
Country	France
Designer	Berret Racoupeau / Nauta Design
Displacement (t)	23
Ballast (tonnes)	6,5
CE norm	A
Hull material	GRP
Hull colour	white
Hull shape	round-bilged
Keel type	fin keel with bulb
Superstructure material	GRP
Deck material	GRP
Deck finish	teak
Superstructure deck finish	teak
Cockpit deck finish	teak
Window material	polycarbonate
Deckhatch	with blackout blinds / mosquito screens
Portholes	aluminium
Fuel tank (litre)	polyethylene 2 x 240
Level indicator (fuel tank)	yes



Freshwater tank (litre)	polyethylene 2 x 330 + 1 x 300
Level indicator (freshwater)	yes
Blackwater tank (litre)	polyethylene 2 x
Level indicator (blackwater)	yes
Blackwater tank extraction	deck extraction + uw line
Wheel steering	cable steering Twin wheel setup
Emergency tiller	yes
Extra info	the berth at Marina di Pescara. The lease has another 9 years to run and the ground rent is 3500 € per annum

ACCOMMODATION

Cabins	3
Berths	8
Interior	mahogany
Layout	Owner cabin, 2 guest cabins, 3 bathrooms, galley & crew cabin (with own bathroom/toilet)
Floor	wood
Saloon	yes
Headroom saloon (m)	2.08
Heating	central hot water Eberspächer Hydronic plus blowers
Chart table	yes
Dinette	with a folding table
Convertible berth	single berth 2 x in salon
Opening door to cockpit	locked by E-lock system
Galley	yes
Countertop	Corian
Sink	stainless steel 2 x (with waste-grinder)
Cooker	calor gas Eno 3 burner
Oven	calor gas Eno
Microwave	Sharp (220v)
Fridge	133 ltr with freezer compartment Vitrifrigo
Freezer	100 ltr (can also be used as a fridge) Vitrifrigo



Hot water system	220V + engine
Water pressure system	electrical
Owners cabin	French bed
Bed length (m)	2,10 x 1,70 m (headroom: 2,10 m)
Wardrobe	hanging/drawers/shelves
Bathroom	en suite I
Toilet	en suite
Toilet system	electric
Wash basin	in the bathroom
Shower	separate
Extra info	Extra large storage space under the masterbedroom bed
Guest cabin 1	double bed
Bed length (m)	2,10 x 1,60 mtr (headroom 1,90 mtr)
Wardrobe	hanging and shelves
Bathroom	en suite II
Toilet	en suite
Toilet system	manual
Wash basin	in the bathroom
Shower	separate
Extra info	headroom shower 2,10 mtr
Guest cabin 2	twin single
Bed length (m)	twin single beds can be linked together into double bed 2 x 2,00 x 0,80 mtr
Wardrobe	hanging and shelves
Bathroom	en suite III
Toilet	en suite
Toilet system	manual
Wash basin	in the bathroom
Shower	separate
Crew cabin(s)	Forward with bunk bed (2 x 2,00 x 0,80 mtr). Can also function as a large storage-area and/or workspace.
Toilet (crew)	in crewcabin



BENETEAU OCEANIS 60

Toilet system	manual
Wash basin	at the toilet
Shower (crew)	yes
Tender garage	With electric transomdoor
Extra info	Drinks-cabinet on lift in salon (behind portside settee)

MACHINERY

No of engines	1
Make	VW
Type	TDI 140-5
HP	135
kW	99.36
Fuel	diesel
Year installed	2016
Maximum speed (kn)	9,5
Cruising speed (kn)	8
Engine hours	1200
Engine cooling system	freshwater heat exchanger
Drive	shaft
Engine controls	electrical
Gearbox	mechanical
Bowthruster	electric
Exhaust	watercooled
Propeller type	feathering
Propeller blades	3
Propeller shaft material	stainless steel
Shaft lubrication	water
Manual bilge pump	1 x
Electric bilge pump	February 2024, bilge pumps replaced 3 x
Bilge alarm	yes
Electrical installation	12/24/230V



Start battery	1 x Exide 12V-85Ah ES950
Service battery	8 x Exide 12V-120Ah ES1350
Bowthruster battery	2 x Optima Red Top 12V-50Ah RTU-4.2
Windlass battery	combined with bowthruster battery-pack
Battery monitor	Mastervolt BTM III
Battery charger	3x Cristec 12v/25amp
Inverter	Marinco 12v/220v/2000watt
Shorepower	with cable 2 x
Extra info	Full engine service, inboard and overboard hoses replaced

NAVIGATION

Compass	2 x Plastimo Olympic 135
Electric compass	via autopilot B&G
Depth sounder	with forward depth scan B&G
Log	B&G
Windset	B&G
Repeater	B&G mfd display
VHF	B&G H90
VHF handheld	B&G H50
Autopilot	B&G
Rudder angle indicator	via autopilot
Radar	B&G Zeus 7
GPS	B&G Zeus 7
Plotter	B&G Zeus 7
Navtex	with screen & printer Furuno NX-700
Electronic chart(s)	yes
AIS transponder	B&G
Navigation lights	yes
Extra info	Night-lighting

EQUIPMENT



BENETEAU OCEANIS 60

Sprayhood with grab rail	Fitted on cockpit arch (including lighting)
Bimini	Full bimini installed 2022.
Cockpit cushions	yes
Cockpit table	foldable
Bathing platform	fold-open
Boarding ladder	stainless steel
Gangway	yes
Deck shower	hot+ cold
Anchor	Delta Stainless steel
Anchor chain	50 Mtr
Windlass	electrical Lewmar with remote controle
Capstan	Lewmar
Outboard support	yes
Davits	stainless steel (500kg)
Davits controls	manual
Sea railing	wire
Grab rail (superstructure)	stainless steel
Railing side opening gates	2 x with fold-out side-steps
Pushpit	yes
Pulpit	yes
Life raft	container
Life raft (pers)	8
Last life raft survey	2020
Lifebuoy	yes
Rope cutter	yes
Radar reflector	yes
Fenders	yes
Mooring lines	yes
TV	LG
Radio-cd player	Fusion MS AV75V
iPod connection	yes
Surround Sound System	yes



Sub-woofer	yes
Cockpit speakers	6 x
Speakers in salon	4 x Bose
Fire extinguisher	yes
Latest extinguisher survey	2020
Extra info	Stern "garage" electrically operated
Extra info	DigitalYacht wifi.
Extra info	Also possible if you buy the boat to get an interesting discount on this berth at Marina di Pescara. The lease has another 9 years to run and the ground rent is 3500 € per annum.

RIGGING

Rigging	fractional 9/10th
Standing rigging	wire (2016)
Brand mast	Seldén
Material mast	aluminium
Spreaders	3 sets
Keel stepped mast	yes
Mainsail cover	with lazy jack's
Battcars	yes
Fully battened mainsail	Elvström (2016)
Genoa II	Elvström (2016)
Genoa furler	Facnor
Reefing System	slabreefing 3 x
Backstay adjuster	hydraulic 2 x Navtec
Boomvang	mechanical and tackle Seldén Rodkicker
Primary sheet winch	electrical 2 x Harken 70ST
Multifunctional winches	halyard/sheet winches 2 x Harken 46ST electrical
Extra info	Sails, mainsail cover, sprayhood were laundered and serviced 2024



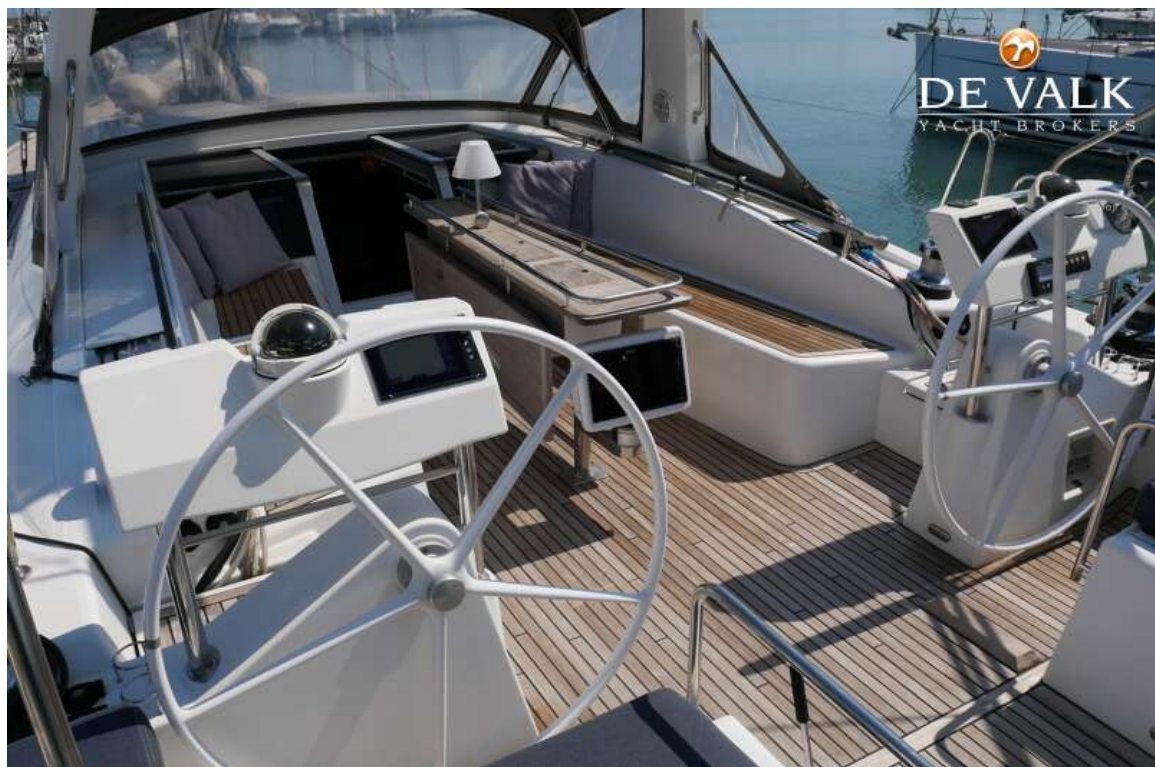
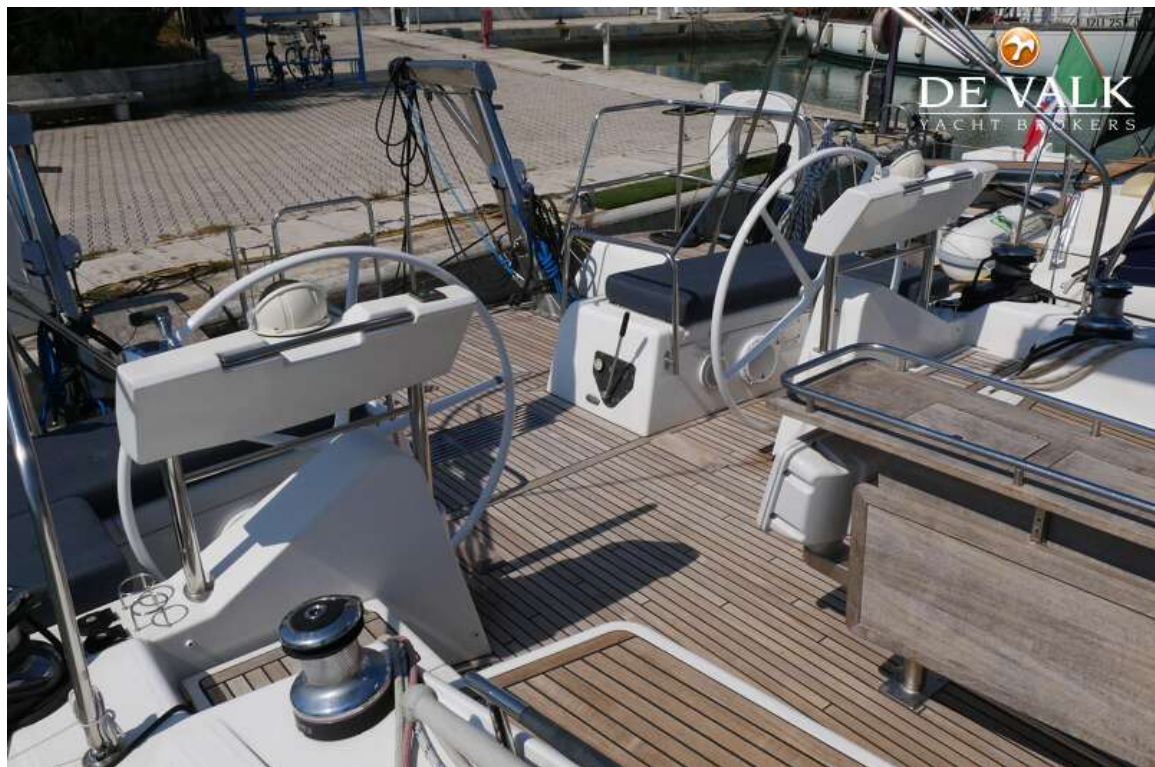
BENETEAU OCEANIS 60



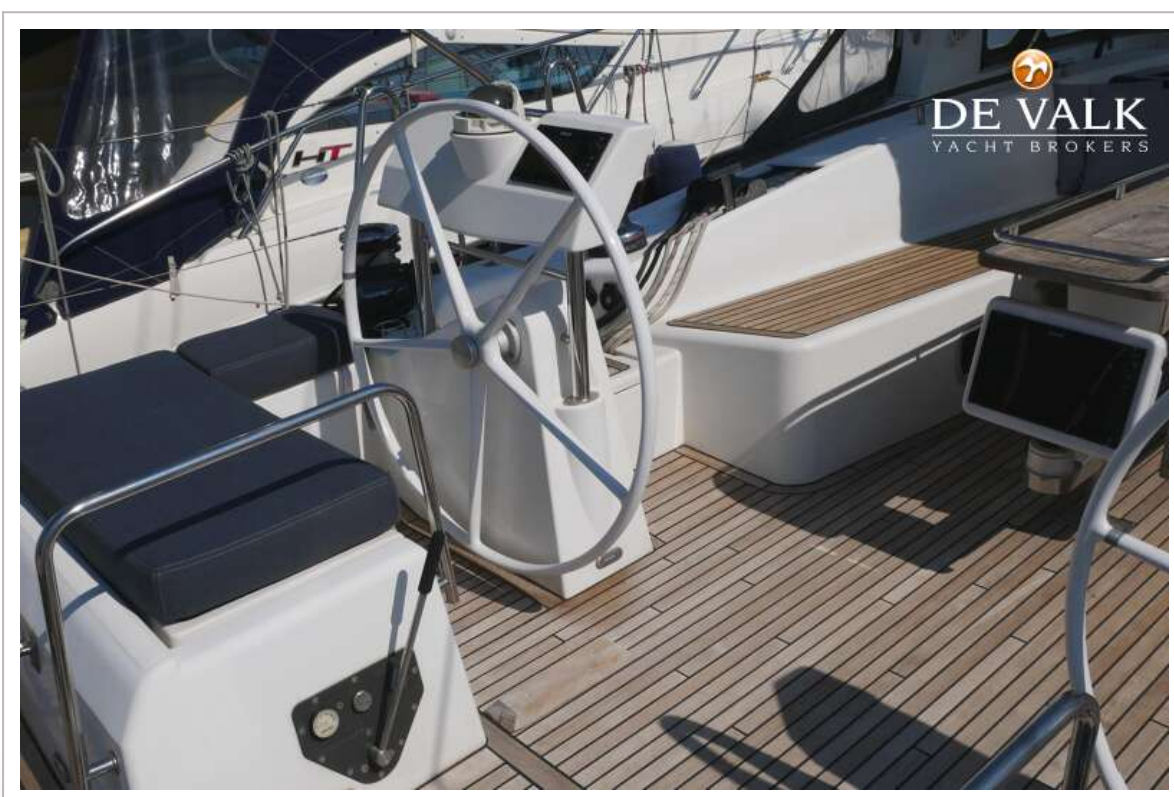
BENETEAU OCEANIS 60



BENETEAU OCEANIS 60



BENETEAU OCEANIS 60

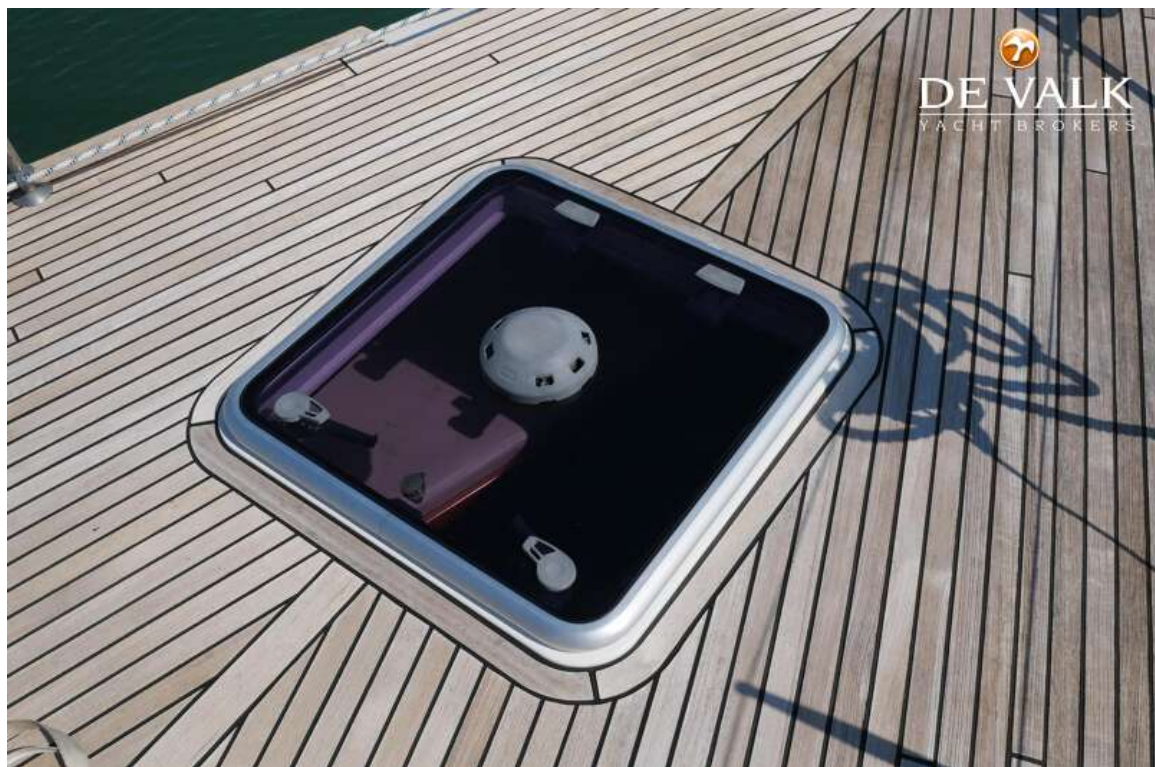
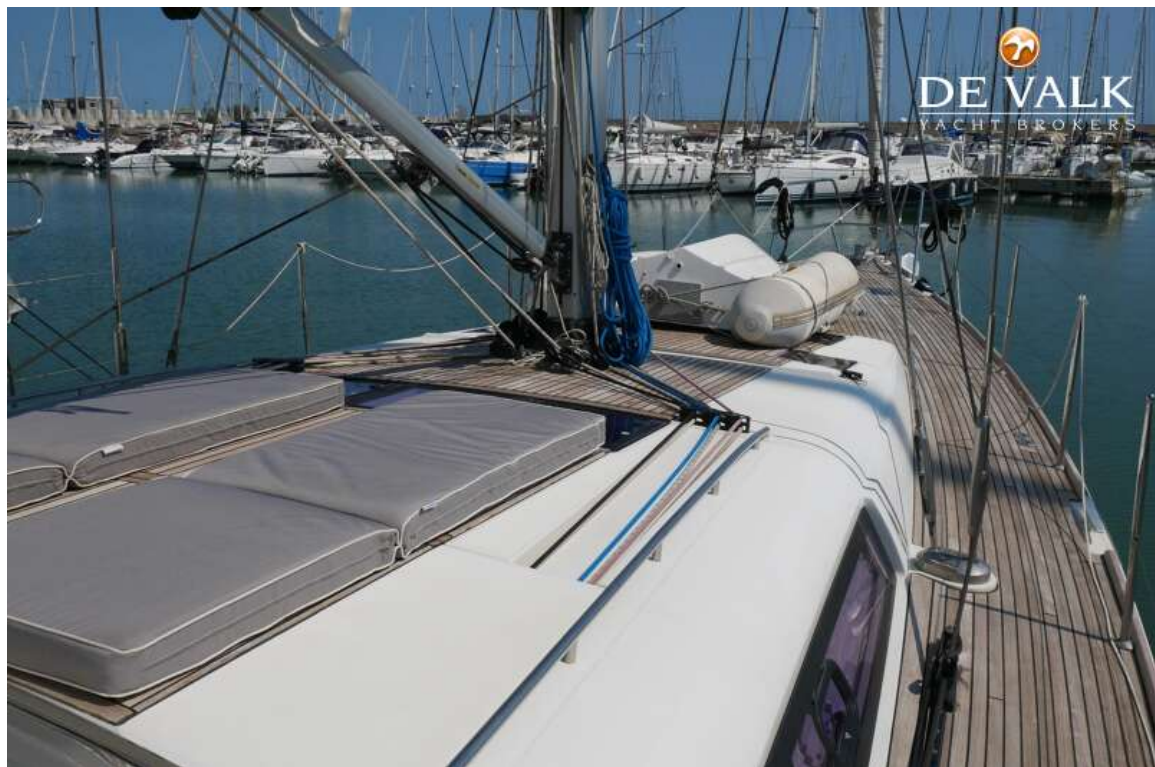


BENETEAU OCEANIS 60

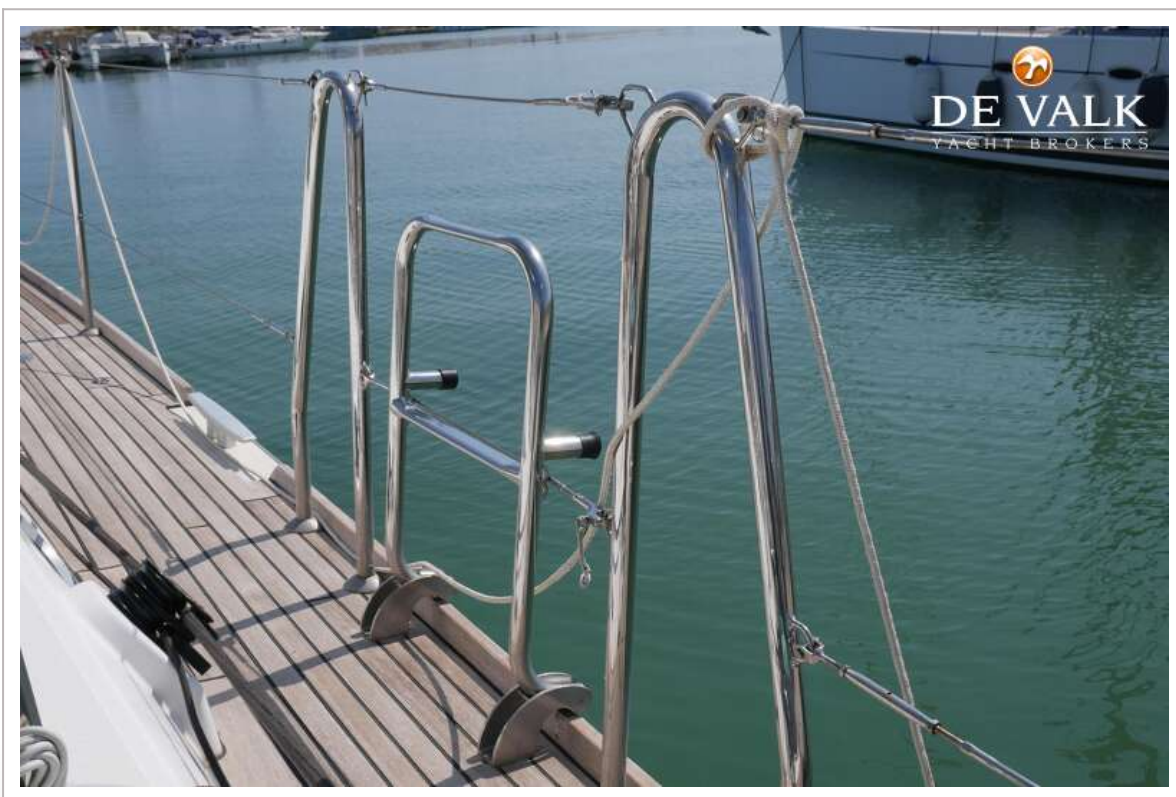
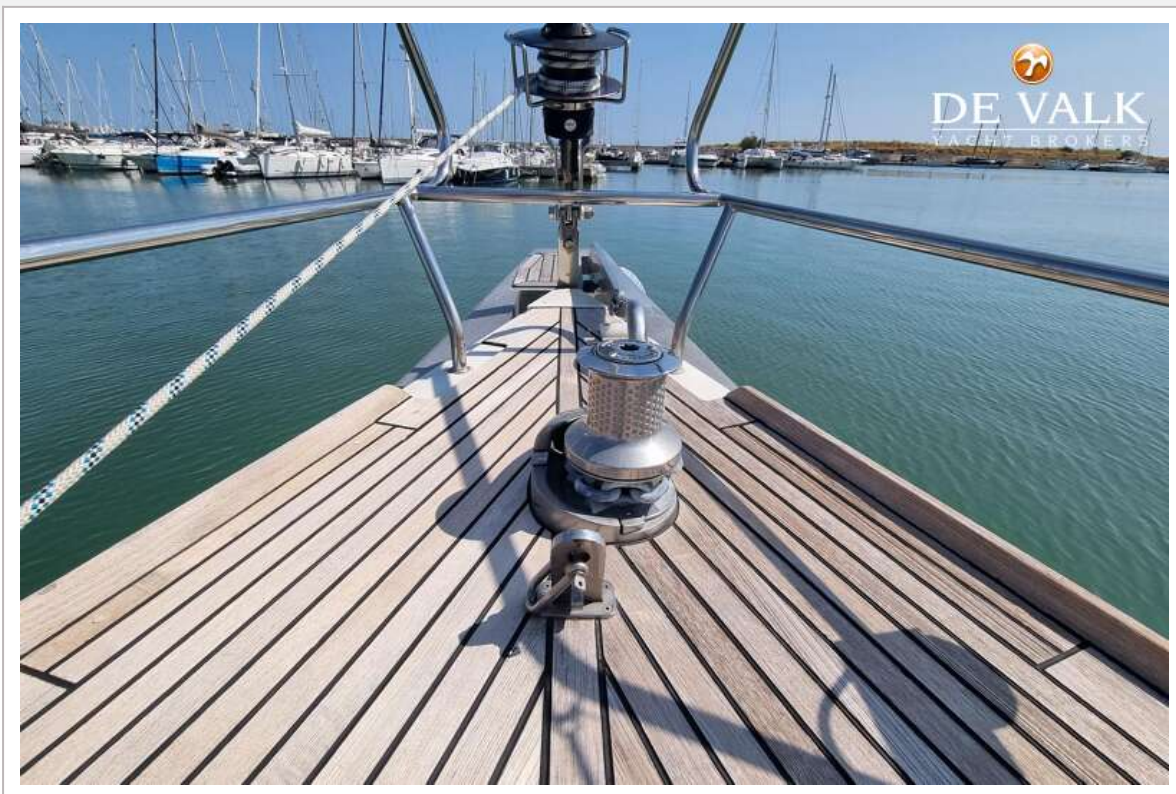


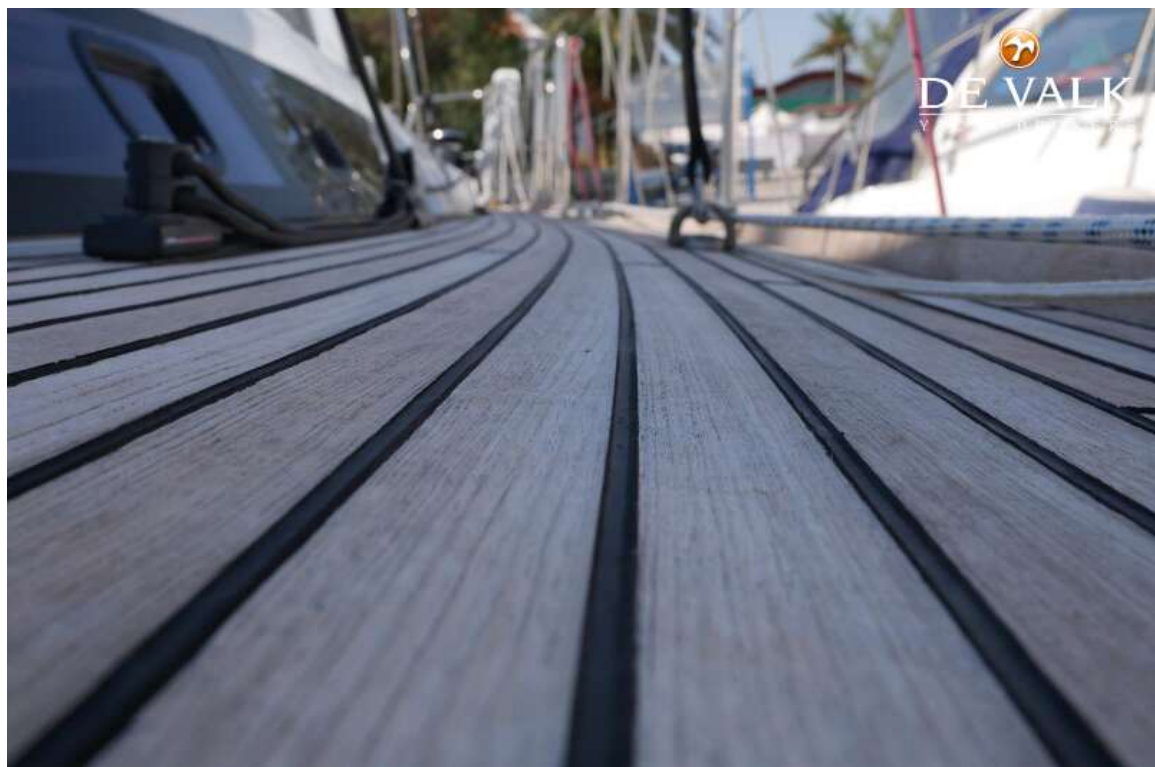
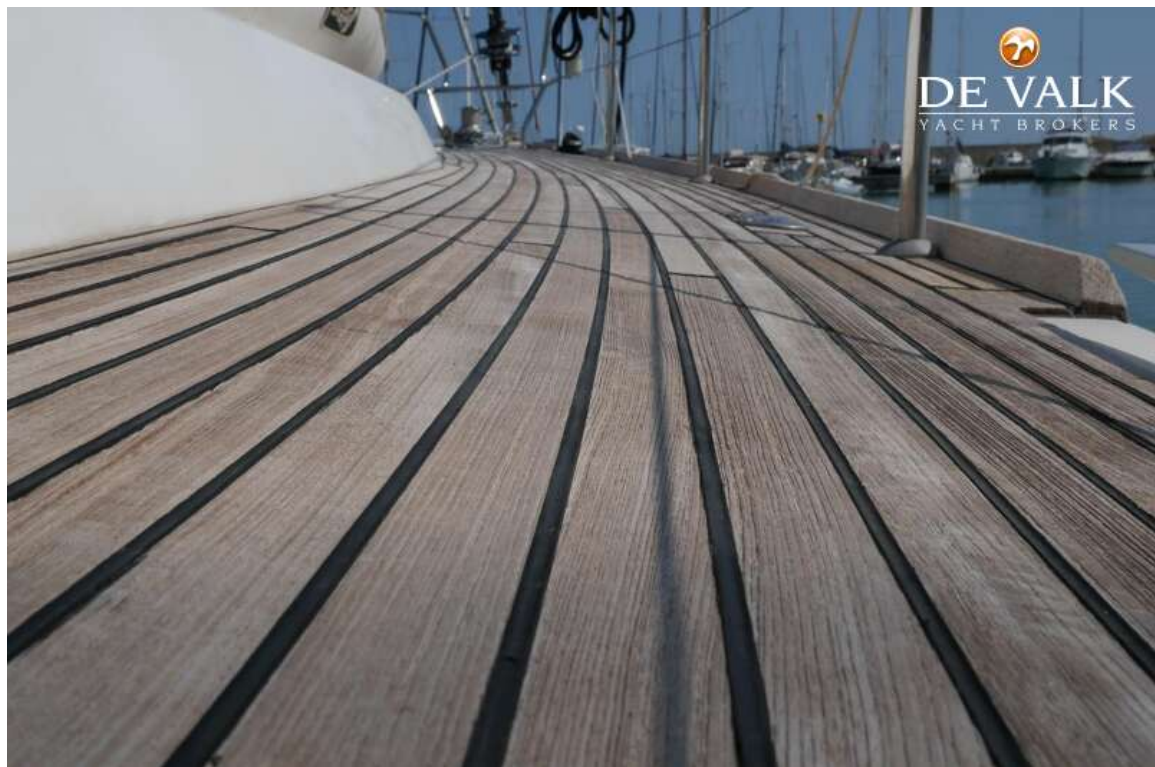
BENETEAU OCEANIS 60



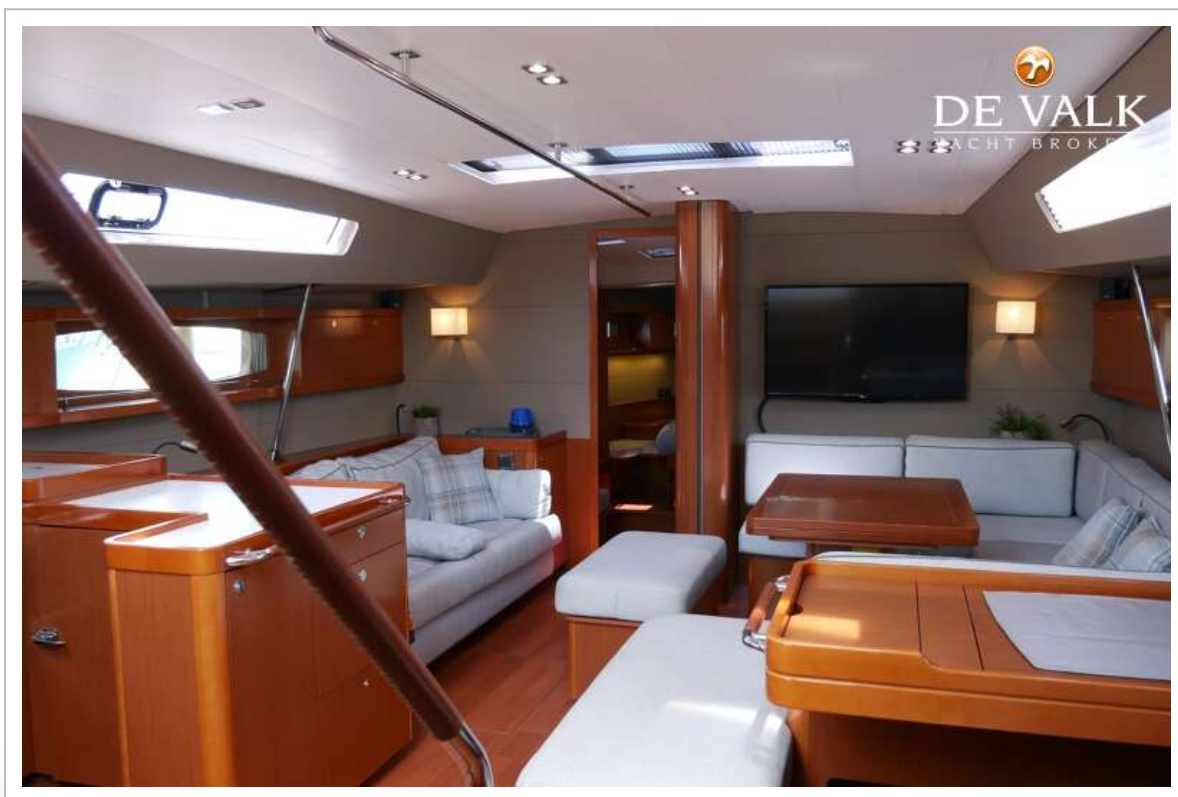


BENETEAU OCEANIS 60





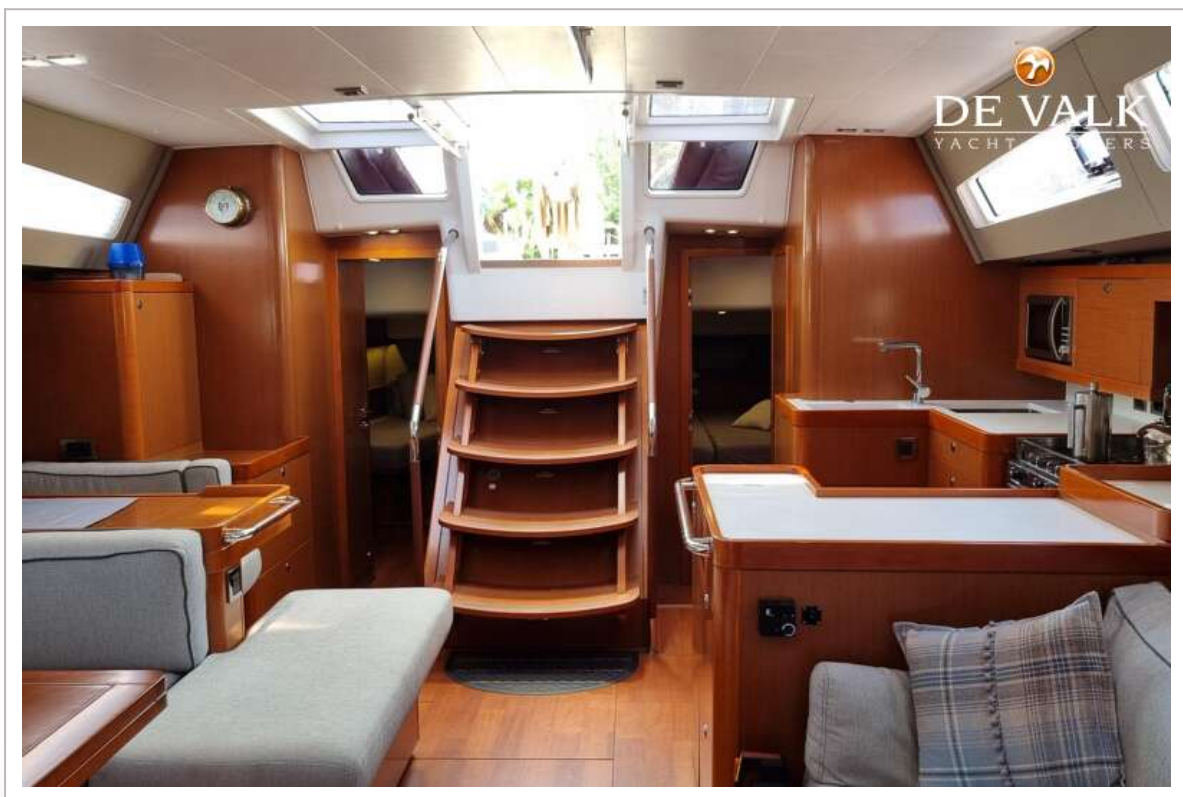
BENETEAU OCEANIS 60



BENETEAU OCEANIS 60



BENETEAU OCEANIS 60



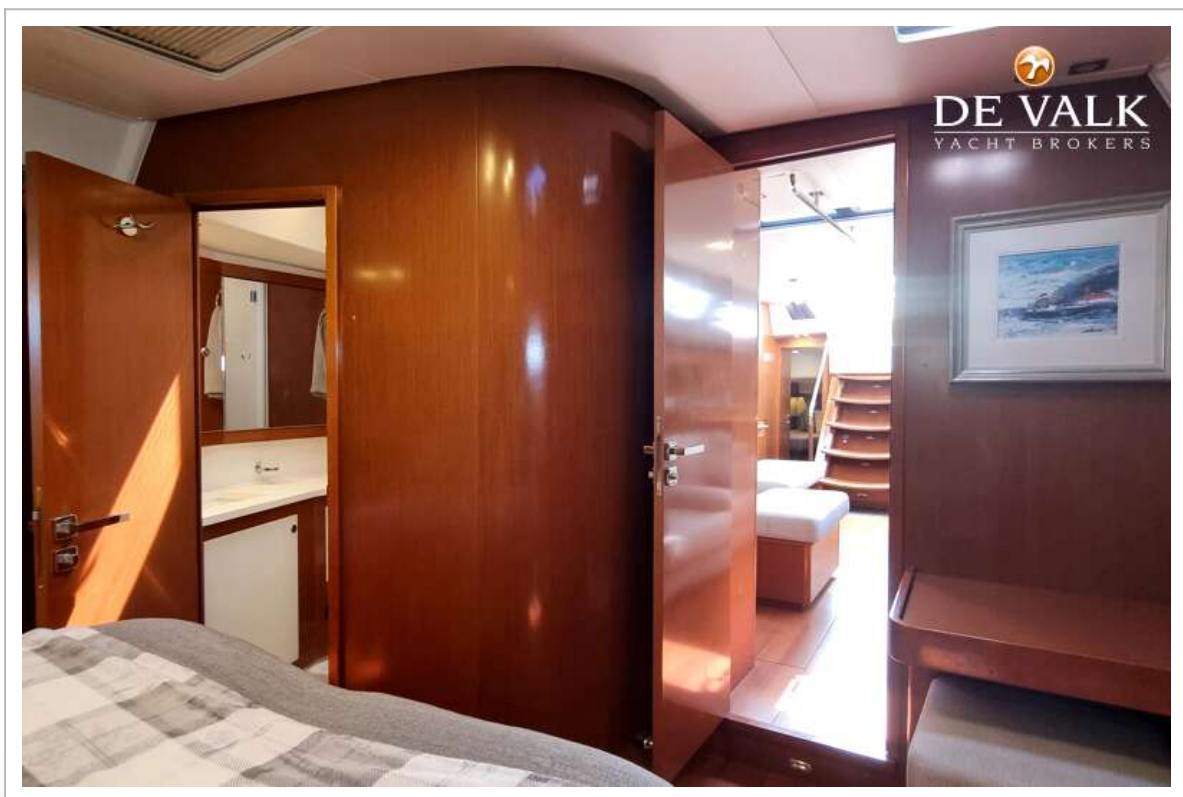
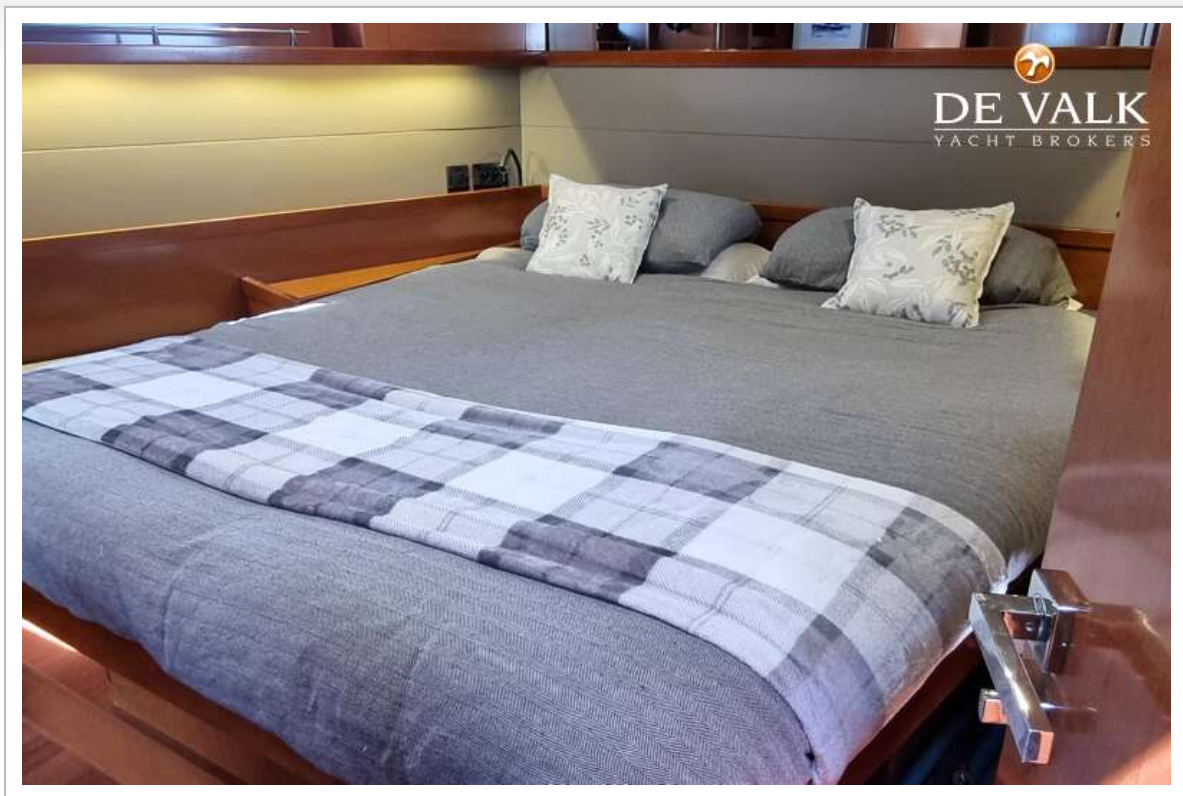
BENETEAU OCEANIS 60



BENETEAU OCEANIS 60



BENETEAU OCEANIS 60



BENETEAU OCEANIS 60



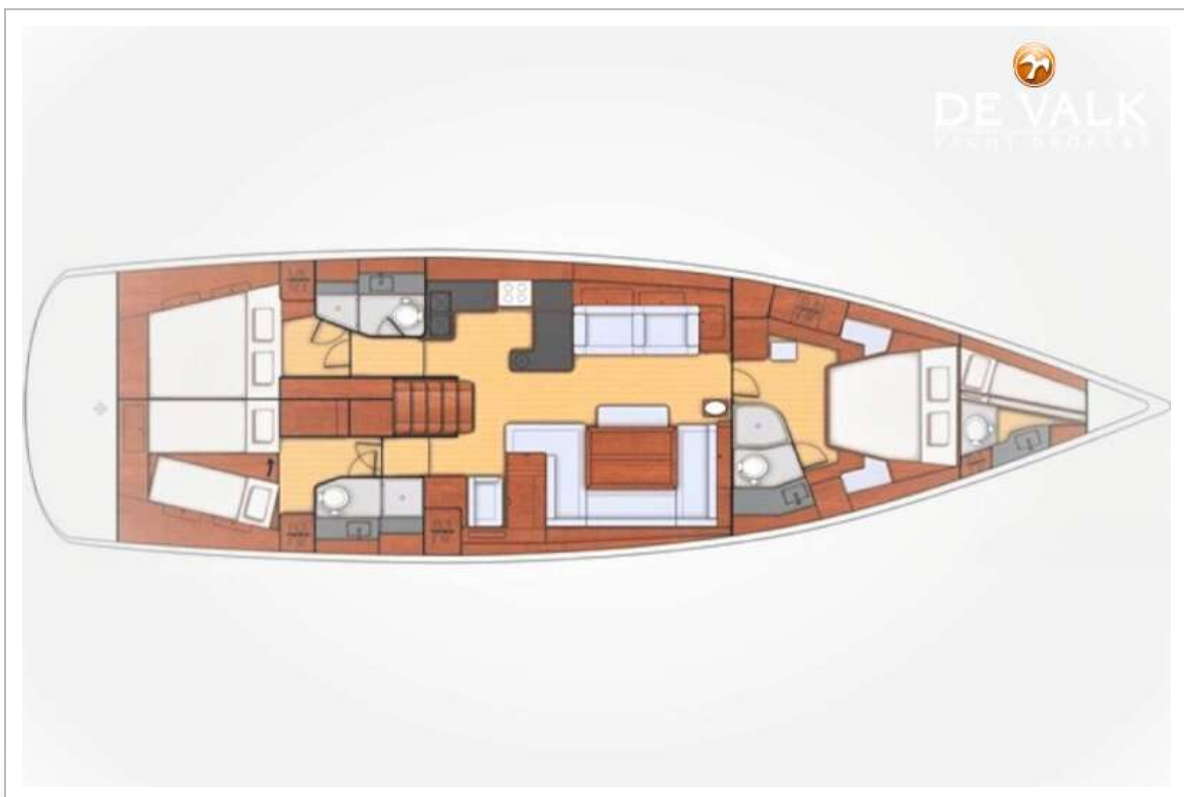
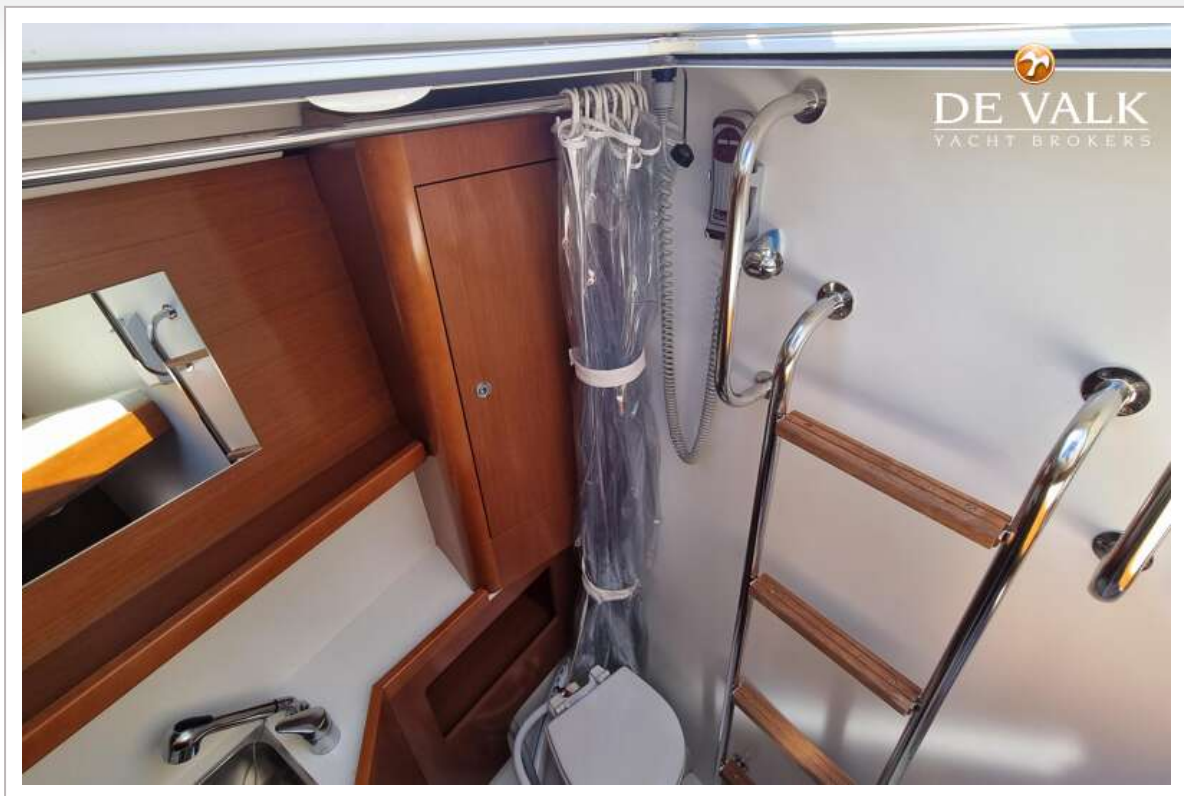
BENETEAU OCEANIS 60



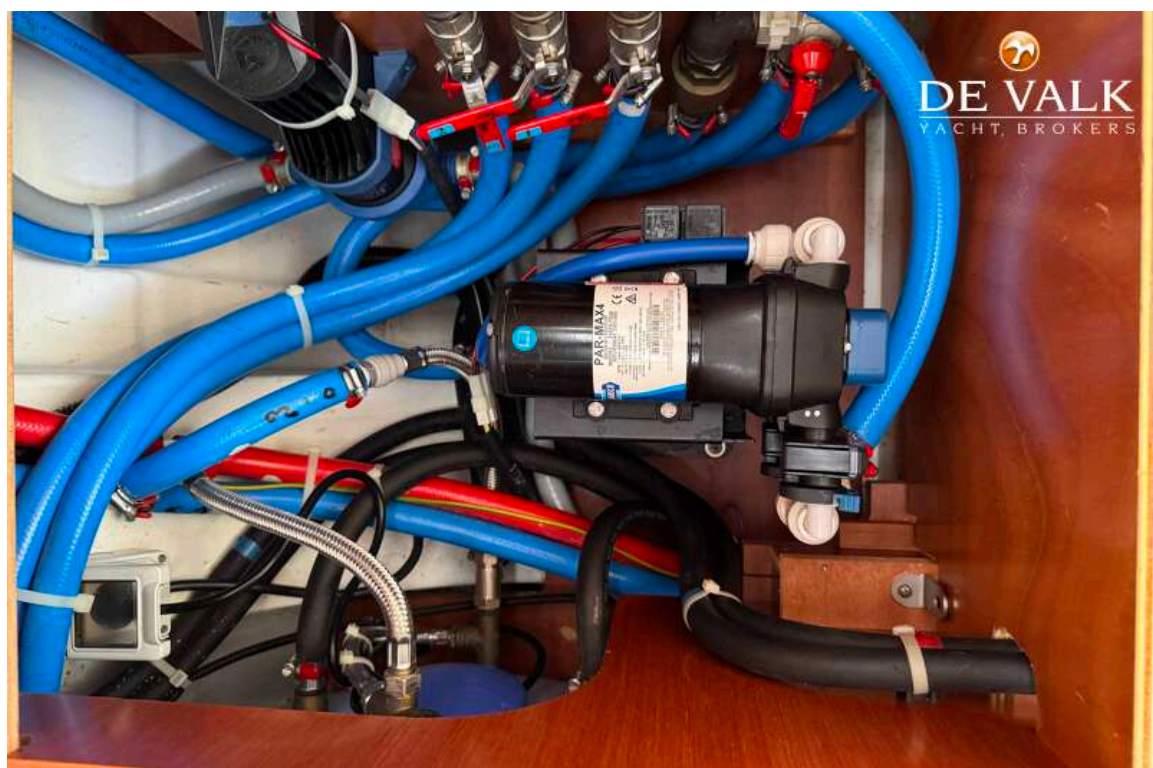
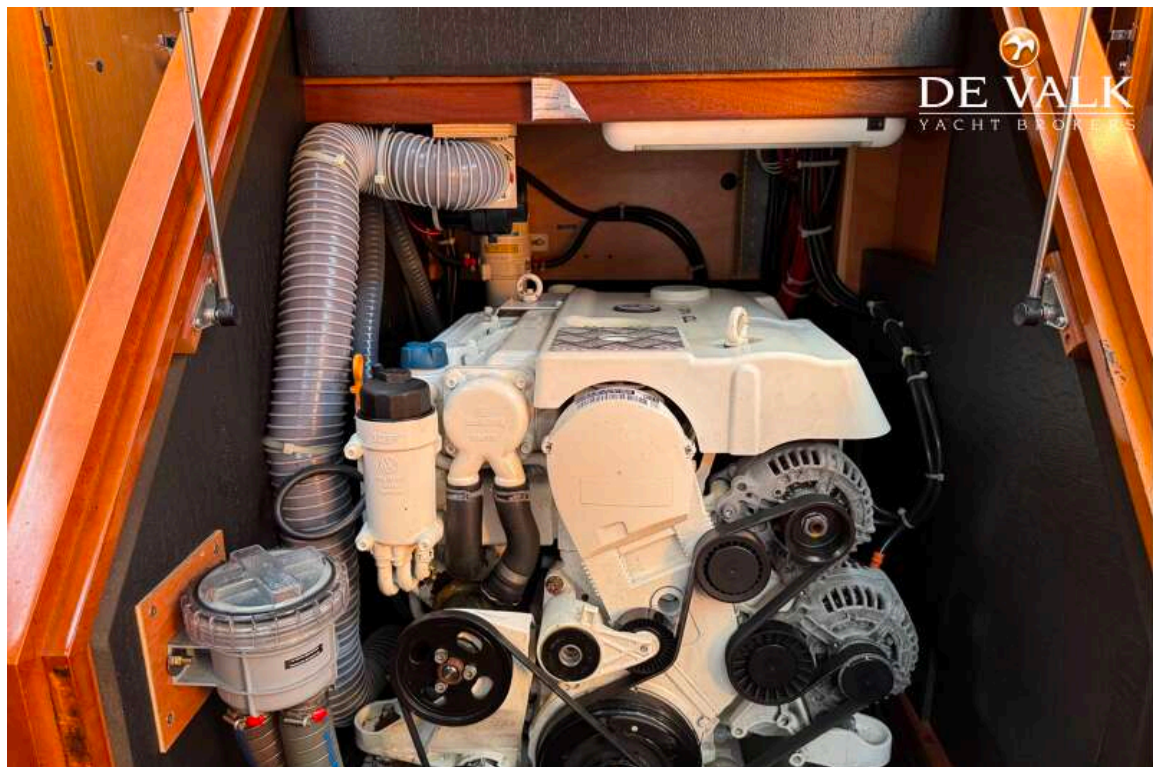
BENETEAU OCEANIS 60



BENETEAU OCEANIS 60



BENETEAU OCEANIS 60



BENETEAU OCEANIS 60

