



LEMSTERLAND KOTTER 1300



BROKER'S COMMENTS

As soon as you board the 'Flipper', you immediately get a warm feeling, as the ship is panelled with a classic interior. 'Flipper' is a good example of a classic cutter not only because of her interior, but also because of her exterior. The steering position on the outside deck gives you the ultimate outdoor feeling on board while sailing. The ideal place to sit with company while sailing. Furthermore, she is equipped with two Mercedes-Benz engines and a bow thruster. The onboard autopilot makes travelling long distances more pleasant.

Ian Pols

SPECIFICATIONS

Dimensions	13.00 x 3.90 x 1.20 (m)	Builder	Katwijk
Built	1979	Cabins	2
Material	Steel	Berths	6
Engine(s)	2 x Mercedes-Benz OM352 diesel	Hp/Kw	2 x 120.00 (hp), 0.00 (kw)
Asking price	sold (VAT)	Lying	at sales office

CONTACT

Sales office	De Valk Altena	Telephone	+31 162 727211
Address	Keizersveer 3A 4941 TA Raamsdonksveer NL	E-mail	altena@devalk.nl

DISCLAIMER

These particulars are given in good faith as supplied but cannot be guaranteed.



GENERAL

Model	LEMSTERLAND KOTTER 1300
Type	motor yacht
LOA (m)	13,00
Beam (m)	3,90
Draft (m)	1,20
Air draft min (m)	3,40
Headroom (m)	1,80
Year built	1979
Builder	Katwijk
Country	The Netherlands
CE norm	NA
Hull material	steel
Hull colour	blue
Hull shape	hard chine
Superstructure material	steel
Deck material	steel
Deck finish	teak
Superstructure deck finish	paint
Window frame	aluminium
Window material	double glazing Rhigo
Flybridge	yes
Mast can be lowered	yes
Fuel tank (litre)	1000
Level indicator (fuel tank)	yes
Freshwater tank (litre)	steel 1000
Blackwater tank (litre)	50, alleen voor de douche
Blackwater tank extraction	pump
Wheel steering	yes
Inside helm position	yes
Outside helm position	yes



More info on paintwork

2022 is het schip geschilderd

ACCOMMODATION

Cabins	2
Berths	6
Floor	wood
Saloon	yes
Heating	24V
Navigation center	yes
Dinette	yes
Countertop	wood
Sink	stainless steel
Cooker	calor gas
Fridge	yes
Water pressure system	yes
Hot water tap	Boiler
Owners cabin	double bed + bunk bed
Wardrobe	yes
Bathroom	shared
Toilet	shared
Toilet system	manual
Wash basin	at the toilet
Shower	shared
Guest cabin 1	v-bed
Wardrobe	yes

MACHINERY

No of engines	2
Make	Mercedes-Benz
Type	OM352
HP	120



Fuel	diesel
Engine hours	BB: 6435, SB: 6420
Drive	shaft
Bowthruster	electric
Propeller type	fixed
Manual bilge pump	yes
Electrical installation	24V 220V
Batteries	5x
Start battery	1x
Service battery	4x
Battery monitor	Mastervolt
Inverter	Victron
Shorepower	with cable

NAVIGATION

Depth sounder/log	Raymarine
VHF	Simrad Shipmate RS8300
Autopilot	Raymarine
Rudder angle indicator	Raymarine
Radar	Raymarine
GPS	Raymarine
Plotter	Raymarine

EQUIPMENT

Cockpit cushions	yes
Cockpit table	yes
Cockpit chairs	yes
Bathing platform	yes
Anchor	yes
Anchor chain	yes
Sea railing	wood



Wiper	yes
Fenders	yes
Mooring lines	yes
Cockpit speakers	yes
Fire extinguisher	yes



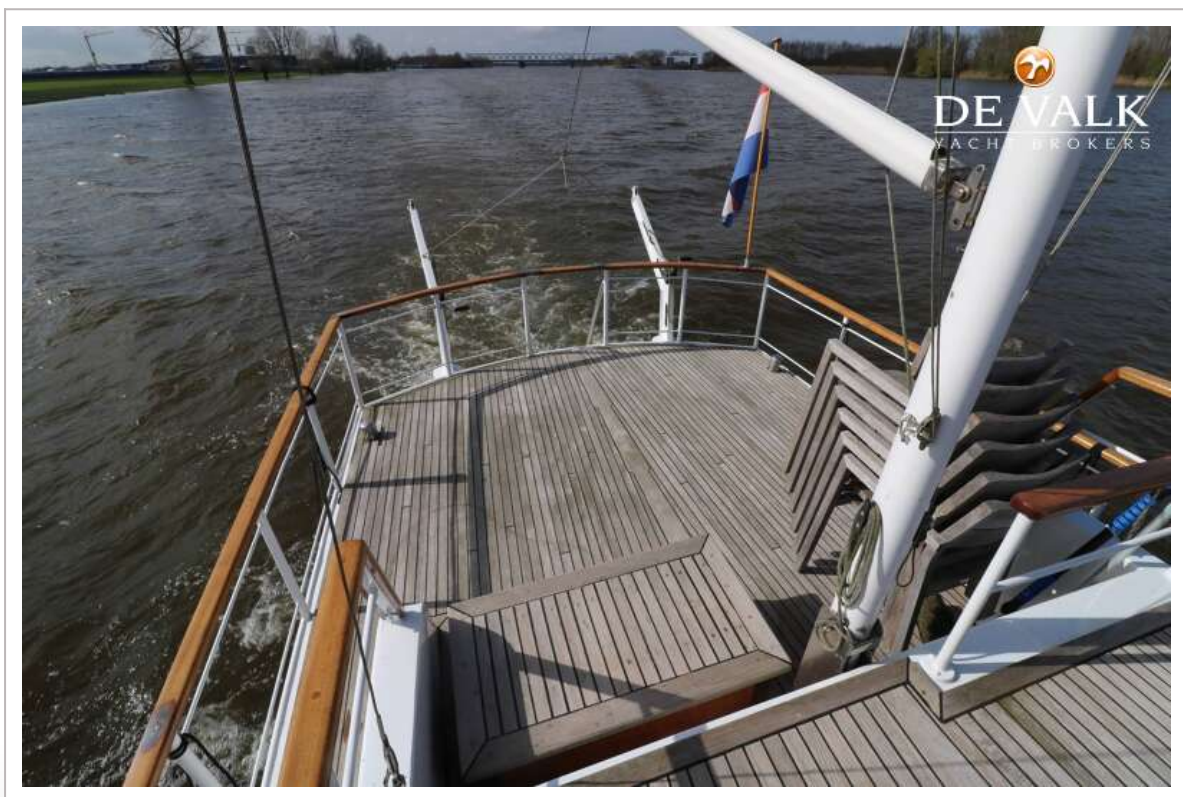




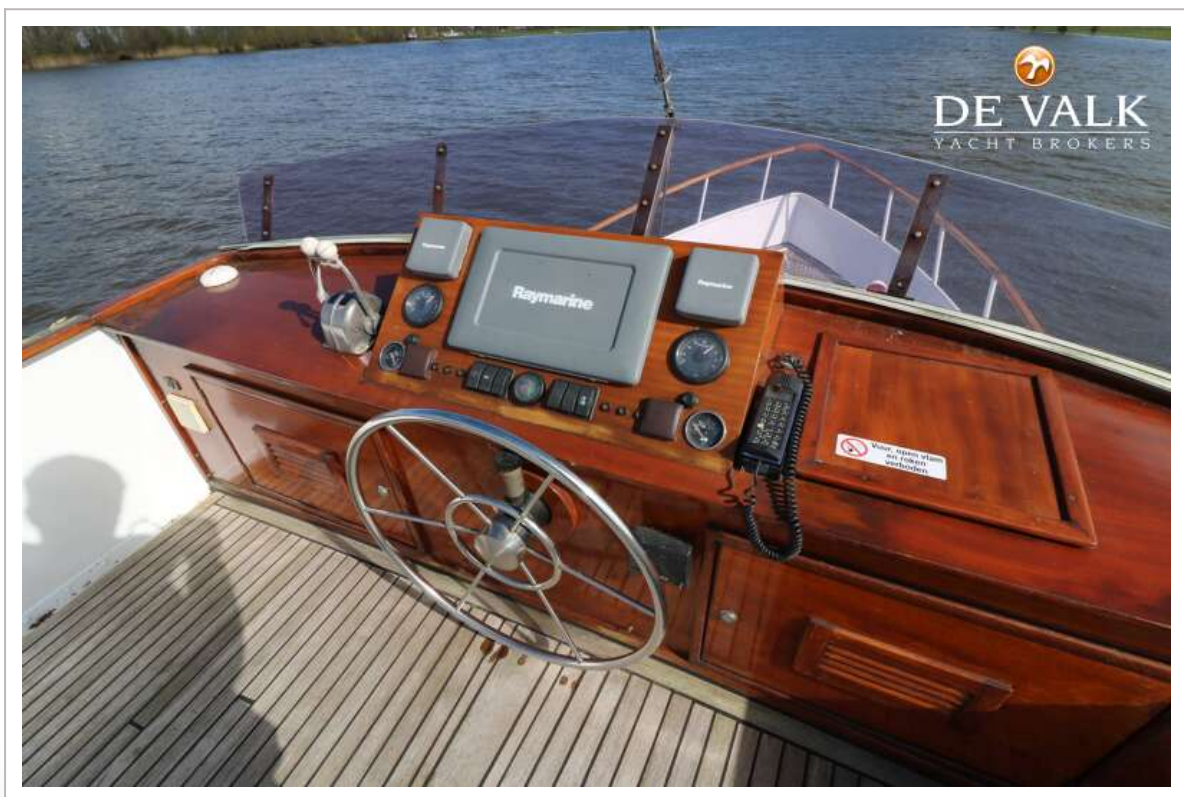
LEMSTERLAND KOTTER 1300



LEMSTERLAND KOTTER 1300



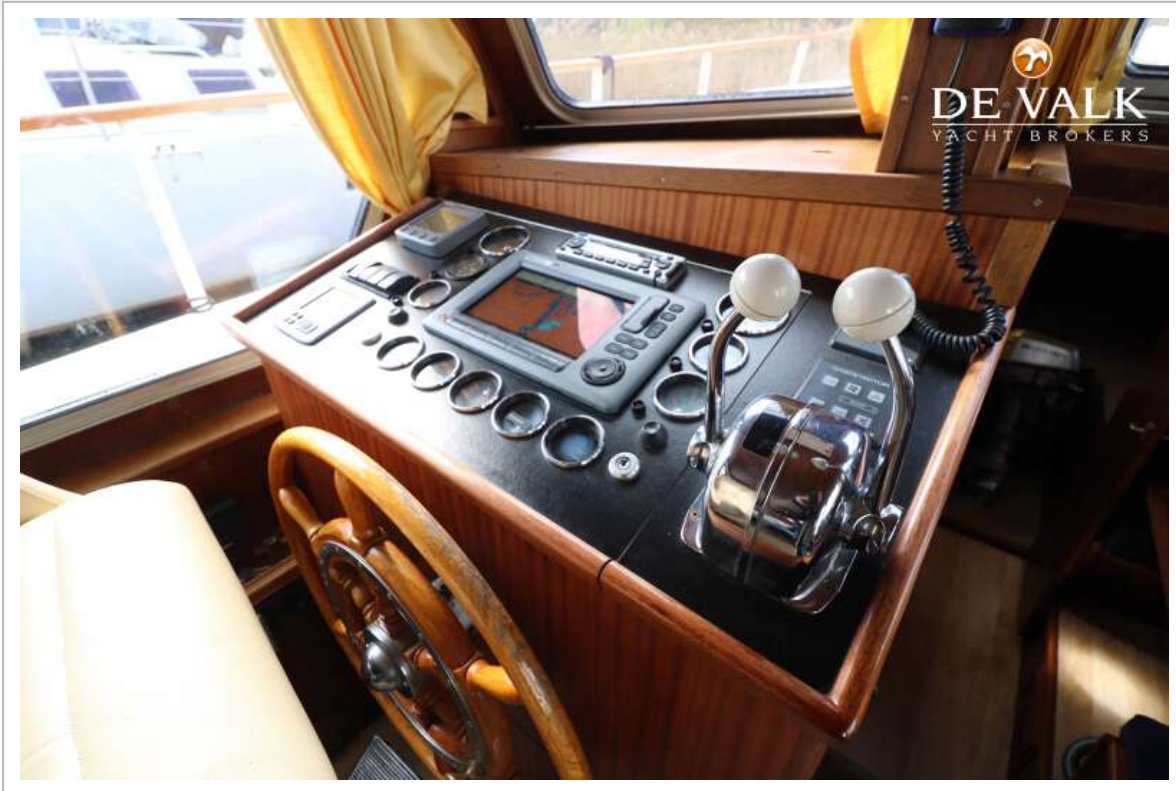
LEMSTERLAND KOTTER 1300



LEMSTERLAND KOTTER 1300



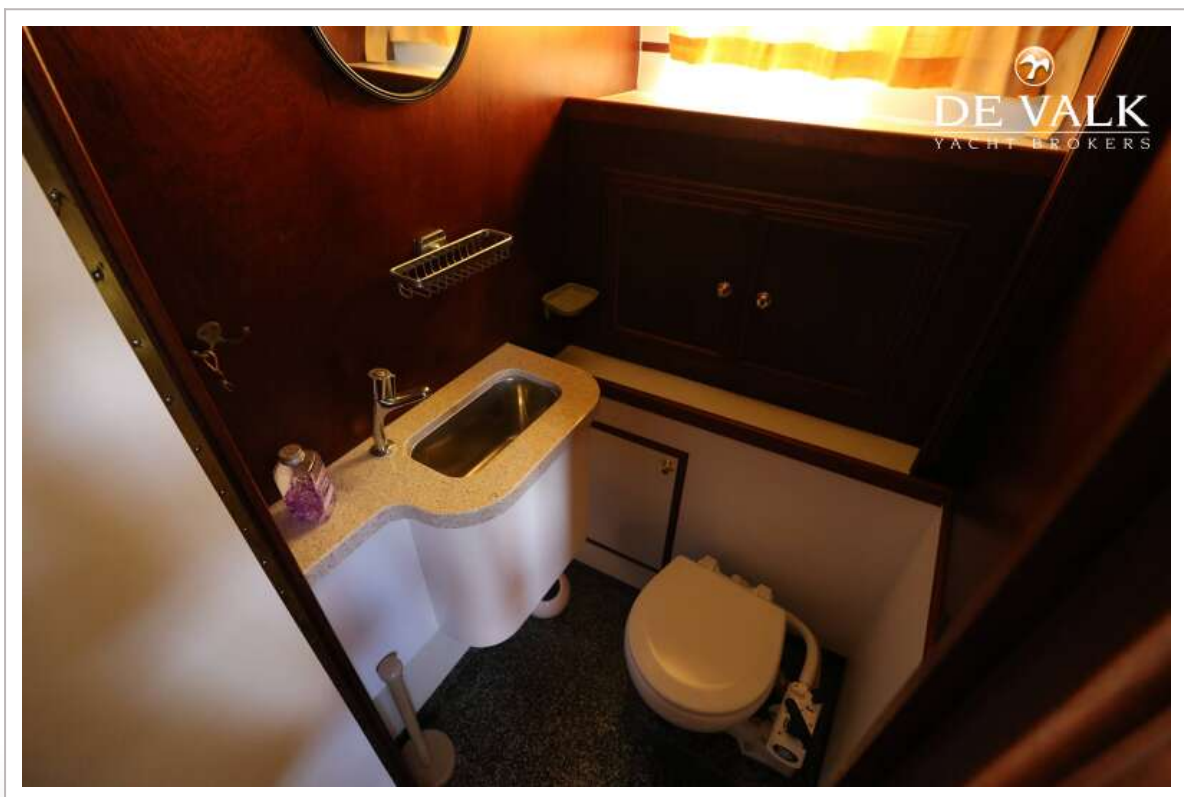
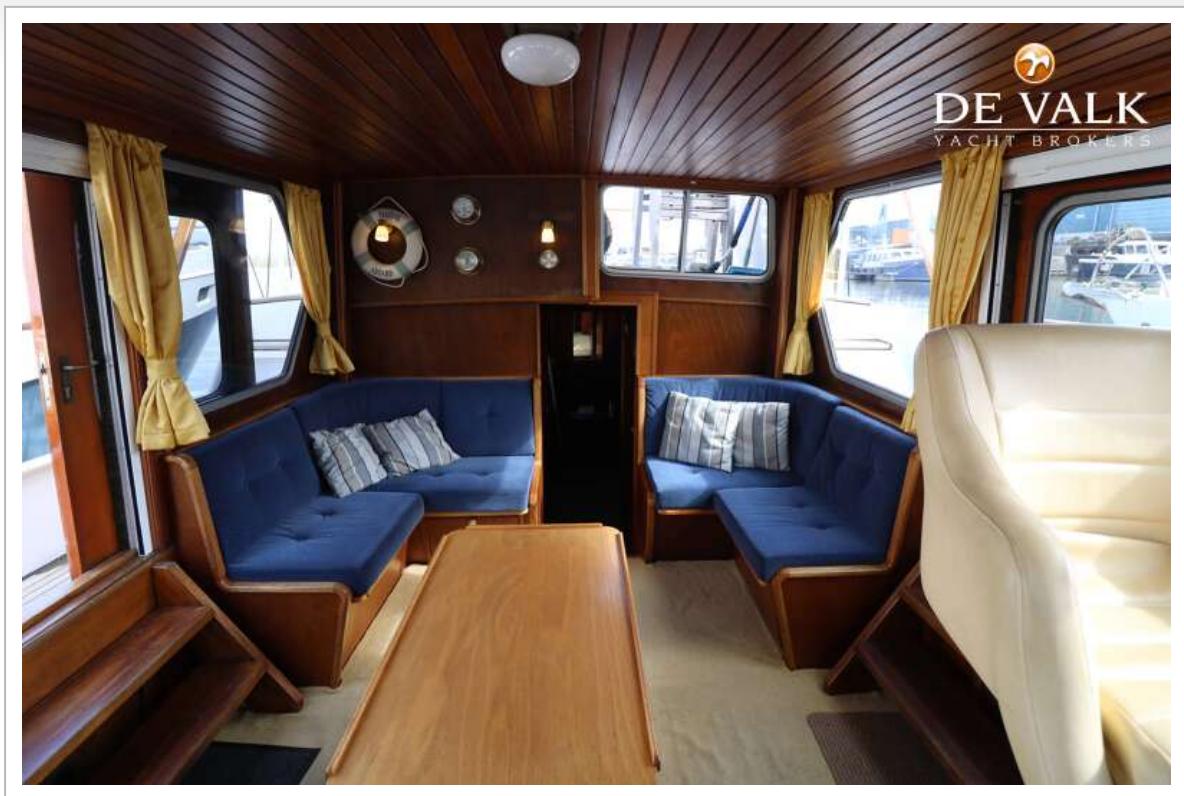
LEMSTERLAND KOTTER 1300



LEMSTERLAND KOTTER 1300



LEMSTERLAND KOTTER 1300



LEMSTERLAND KOTTER 1300

