



EX RESEARCH VESSEL M.Y. TYPE MI-400



**DE VALK**  
YACHT BROKERS

# EX RESEARCH VESSEL M.Y. TYPE MI-400

## BROKER'S COMMENTS

Ex-researche vessel "Twelen" completed in 1979 on the Wisla shipyard in Gdansk. Built as sounding vessel for the German government and now for many years in use as a privately owned motor yacht. New CVO-certified in 05-2025. Ashore for hull measurement, antifouling and hull painting 05-2025. Rockwool insulated and Kabola KB45 central heating makes her comfortable for longer stay on board (liveaboard) Viewing possible in our sales marina in Monnickendam.

*Reinier van der Wolf*

## SPECIFICATIONS

<b>Dimensions</b>	21.40 x 4.81 x 1.50 (m)	<b>Builder</b>	Stocznia Wisla Gdansk
<b>Built</b>	1979	<b>Cabins</b>	2
<b>Material</b>	Steel	<b>Berths</b>	6
<b>Engine(s)</b>	2 x Wola 53 ANM 59 H6AA diesel	<b>Hp/Kw</b>	2 x 210.00 (hp), 154.56 (kw)
<b>Asking price</b>	€ 149.500 (VAT )	<b>Lying</b>	at sales office

## CONTACT

<b>Sales office</b>	De Valk Monnickendam B.V.	<b>Telephone</b>	+31 (0)299 65 63 50
<b>Address</b>	Hoogedijk 6 1145 PM Katwoude NL	<b>E-mail</b>	monnickendam@devalk.nl

## DISCLAIMER

These particulars are given in good faith as supplied but cannot be guaranteed.



# EX RESEARCH VESSEL M.Y. TYPE MI-400

## GENERAL

<b>Model</b>	EX RESEARCH VESSEL M.Y. TYPE MI-400
<b>Type</b>	motor yacht
<b>LOA (m)</b>	21,40
<b>Beam (m)</b>	4,81
<b>Draft (m)</b>	1,50
<b>Year built</b>	1979
<b>Builder</b>	Stocznia Wisla Gdansk
<b>Country</b>	Poland
<b>Displacement (t)</b>	47
<b>Hull material</b>	steel
<b>Hull colour</b>	black   Hull painted 05-2025
<b>Hull thickness (mm)</b>	Hull thickness measurement from 05-2025 can be viewed in our office.
<b>Hull shape</b>	round-bilged
<b>Bilge keels</b>	Small bilge keels
<b>Superstructure material</b>	aluminium
<b>Rubbing strake</b>	steel
<b>Deck material</b>	steel
<b>Deck finish</b>	paint   Deck painted 05-2025
<b>Superstructure deck finish</b>	paint
<b>Antifouling (year)</b>	05-2025
<b>Window material</b>	glass
<b>Portholes</b>	yes
<b>Insulation</b>	rockwool
<b>Mast can be lowered</b>	electric
<b>Fuel tank (litre)</b>	Approx. 5500 litre ( 2x 1500L, 1x 2500L)
<b>Freshwater tank (litre)</b>	Approx. 2000 litre
<b>Blackwater tank (litre)</b>	yes
<b>Wheel steering</b>	hydraulic
<b>Inside helm position</b>	yes



# EX RESEARCH VESSEL M.Y. TYPE MI-400

**Extra info** | There is a tank for new and old oil. There is also a tank for coolant.

## ACCOMMODATION

<b>Cabins</b>	2
<b>Berths</b>	6
<b>Layout</b>	Guest cabin with bunk bed in the front, owners cabin with double bed, wheelhouse, shower and toilet, entrance to the machine room, galley and saloon.
<b>Aft deck</b>	yes
<b>Pilot house</b>	yes
<b>Saloon</b>	yes
<b>Heating</b>	central heating   Kabola KB45 (produced 2022)
<b>Dinette</b>	yes
<b>Galley</b>	yes
<b>Countertop</b>	yes
<b>Sink</b>	stainless steel
<b>Cooker</b>	color gas 4 burner
<b>Extractor</b>	yes
<b>Microwave</b>	Bosch Gourmet
<b>Fridge</b>	Whirlpool
<b>Freezer</b>	Liebherr
<b>Hot water system</b>	on central heating
<b>Water pressure system</b>	electrical   Jabsco Par Max with hydrophore
<b>Owners cabin</b>	double bed
<b>Wardrobe</b>	yes
<b>Toilet</b>	separate
<b>Toilet system</b>	manual
<b>Wash basin</b>	in the bathroom
<b>Shower</b>	separate
<b>Guest cabin 1</b>	bunk bed
<b>Wardrobe</b>	shelves



Washing machine/dryer combi

Siemens Wash & Dry 6143

## MACHINERY

No of engines	2
Make	Wola
Type	53 ANM 59 H6AA
HP	210
kW	154.56
Fuel	diesel
Engine cooling system	closed keelcooling
Drive	shaft
Engine controls	manual
Gearbox	yes
Exhaust	dry
Propeller type	fixed
Propeller blades	4 bladed
Generator	Buck engine, Newage Stamford A.C generator K.V.A. 25
Running hours generator	yes
Start battery	yes
Service battery	yes
Battery monitor	Mastervolt Mass inverter charger control
Battery charger/inverter	yes
Shorepower	with cable

## NAVIGATION

Compass	Liquid compass
VHF	Icom IC-M411
Radar	Koden
Plotter/GPS	Garmin GPSmap 4012
AIS transceiver	Em-Trak A100
EPIRB	Inmarsat-E Epirb Mark 3-RCU



## EQUIPMENT

Anchor	yes
Anchor chain	yes
Windlass	electrical
Davits	steel
Davits controls	manual
Sea railing	steel
Grab rail (superstructure)	steel
Railing side opening gates	yes
Wiper	yes
Clearview window	2x
Horn	yes
Fenders	yes
Mooring lines	yes
TV	Sony
Radio	Poineer
DVD player	Sony
Fire extinguisher	yes



# EX RESEARCH VESSEL M.Y. TYPE MI-400



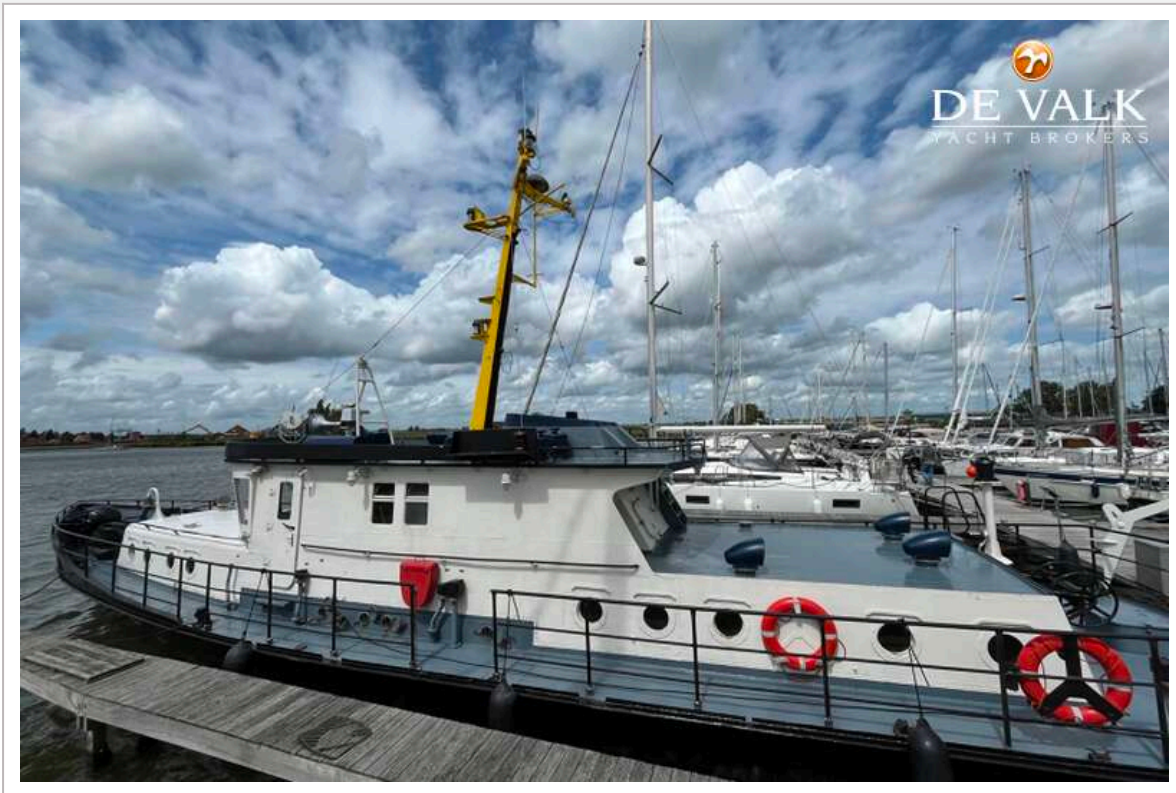
# EX RESEARCH VESSEL M.Y. TYPE MI-400



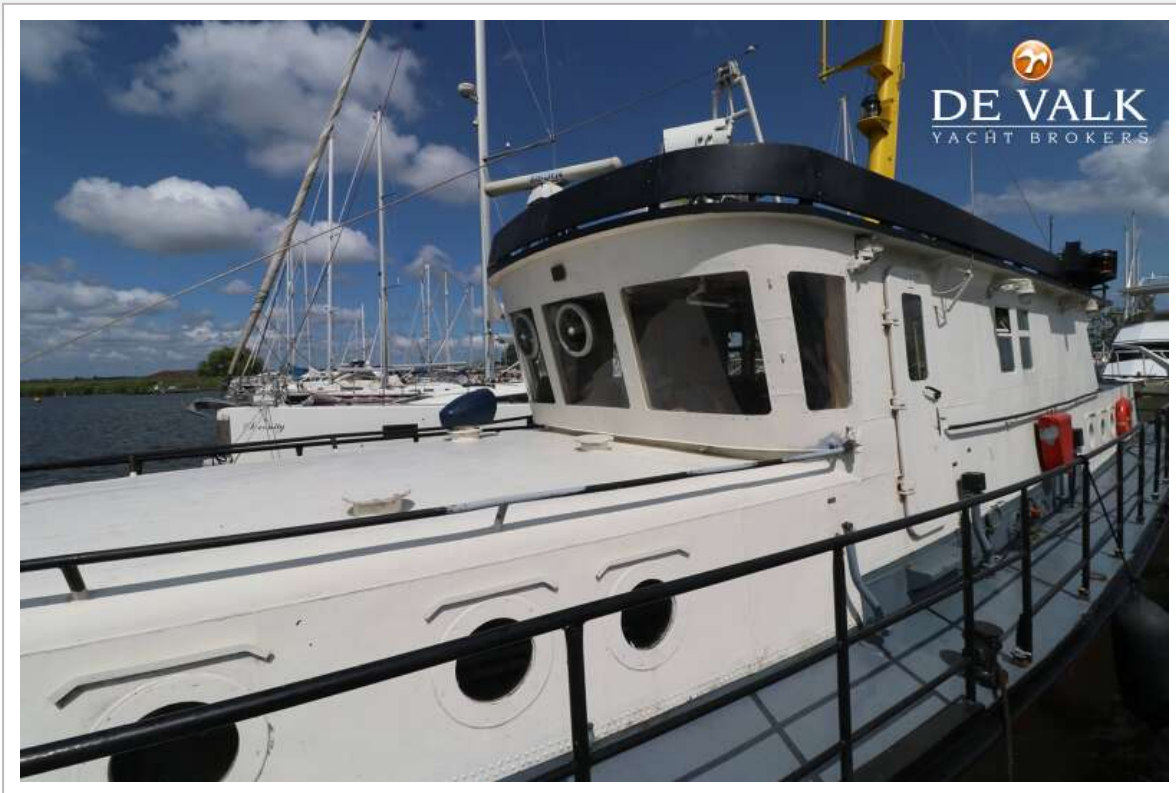
# EX RESEARCH VESSEL M.Y. TYPE MI-400



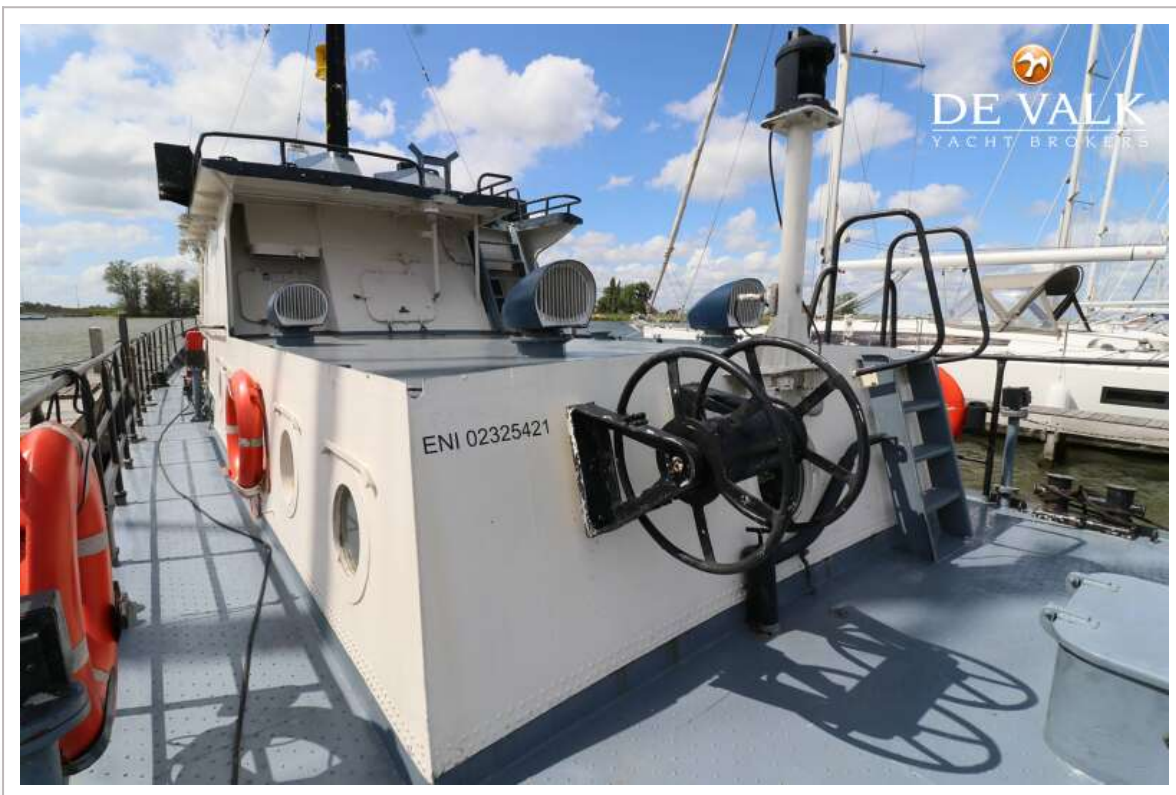
# EX RESEARCH VESSEL M.Y. TYPE MI-400



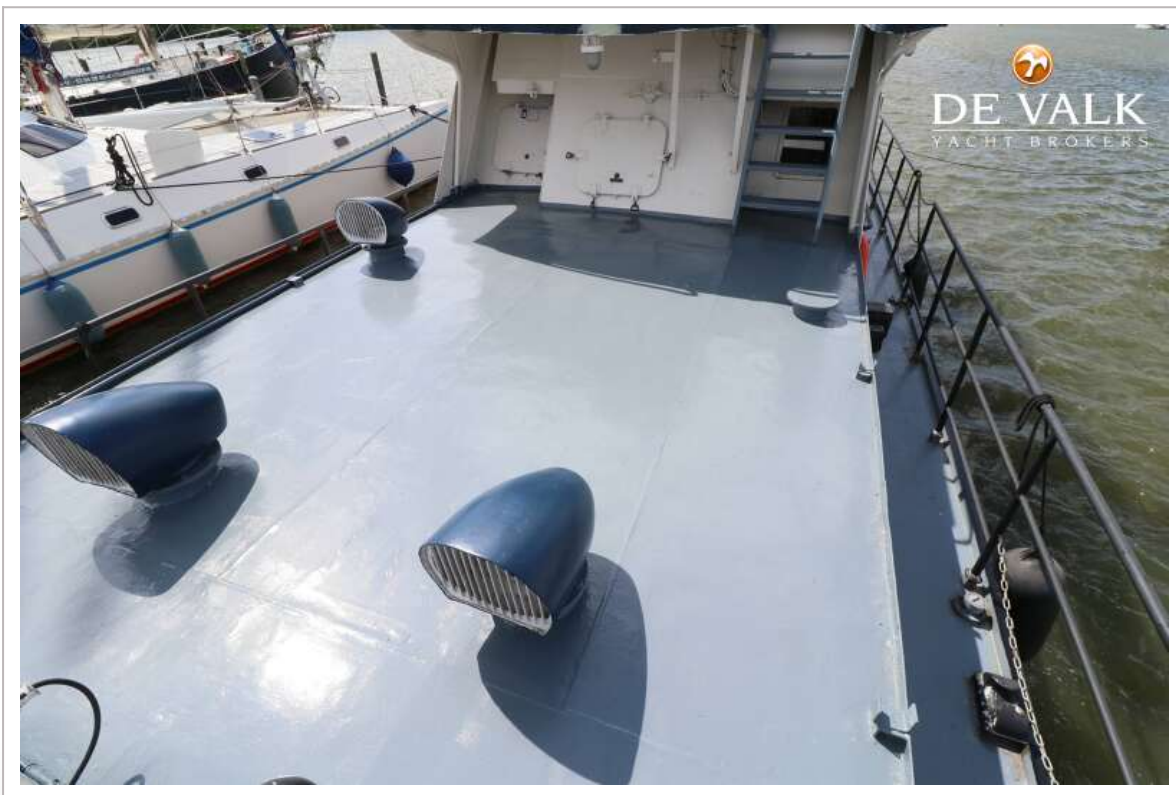
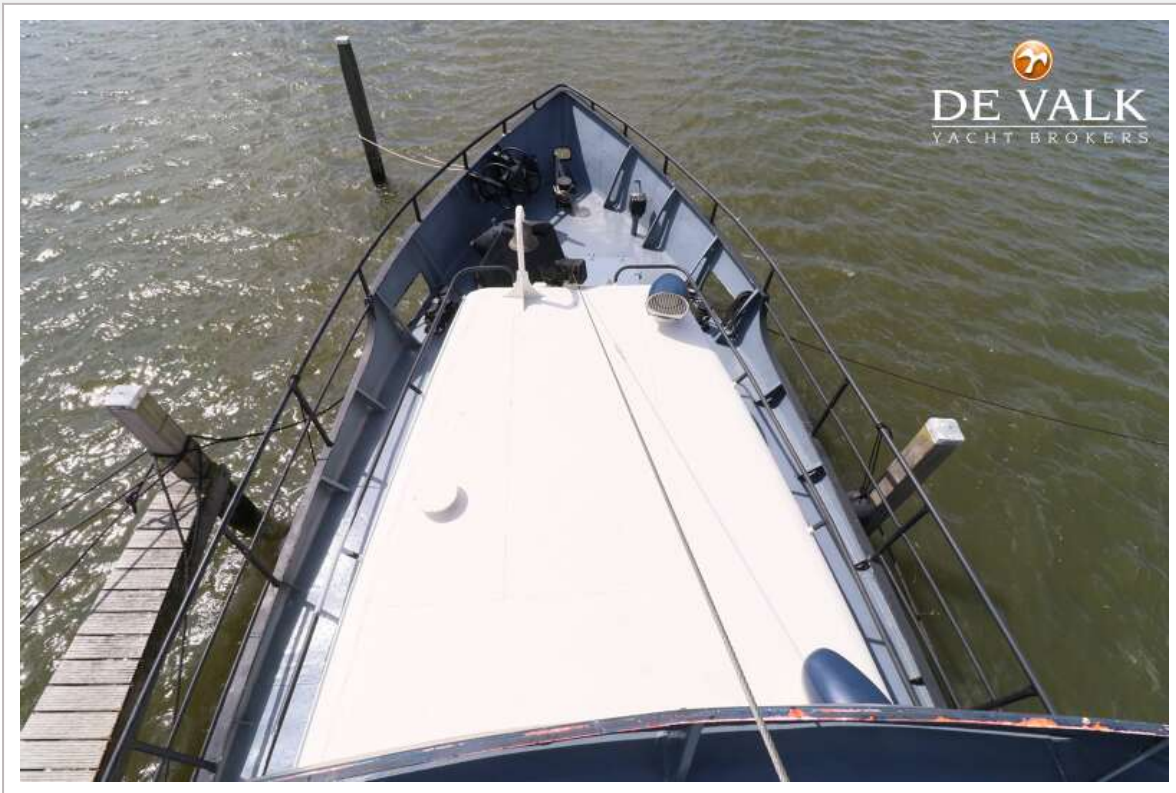
# EX RESEARCH VESSEL M.Y. TYPE MI-400



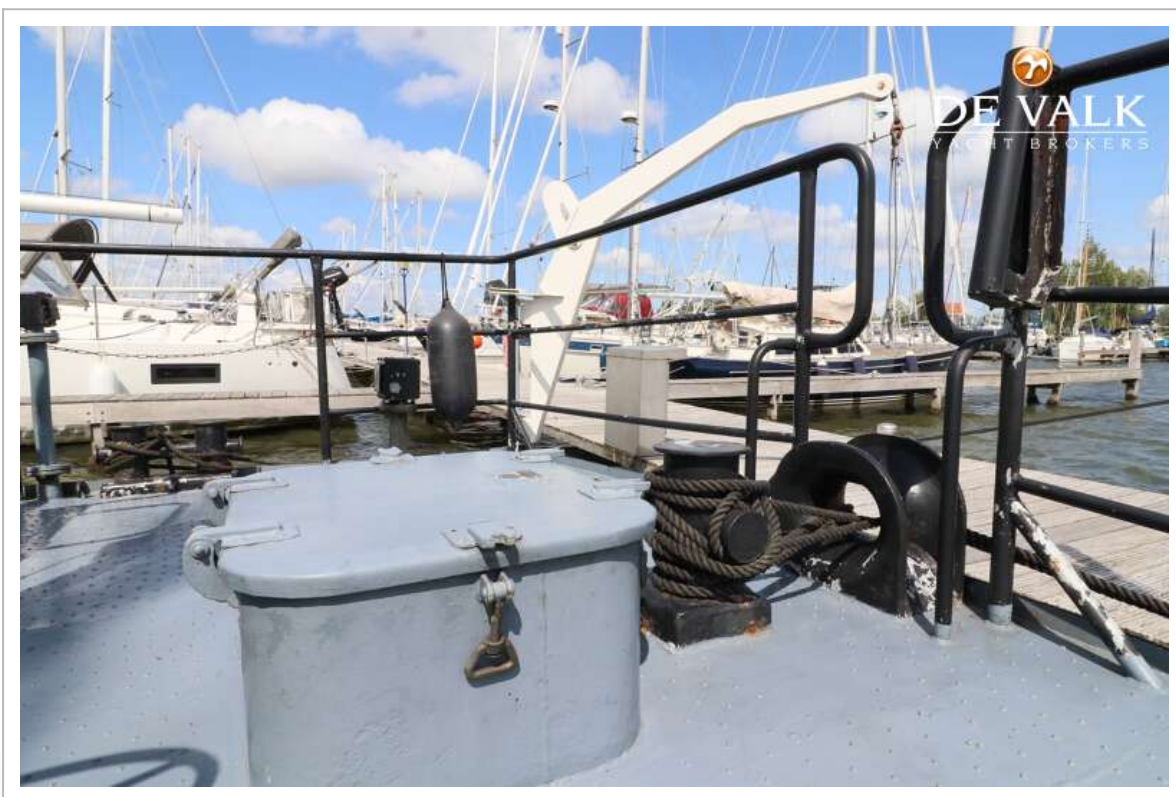
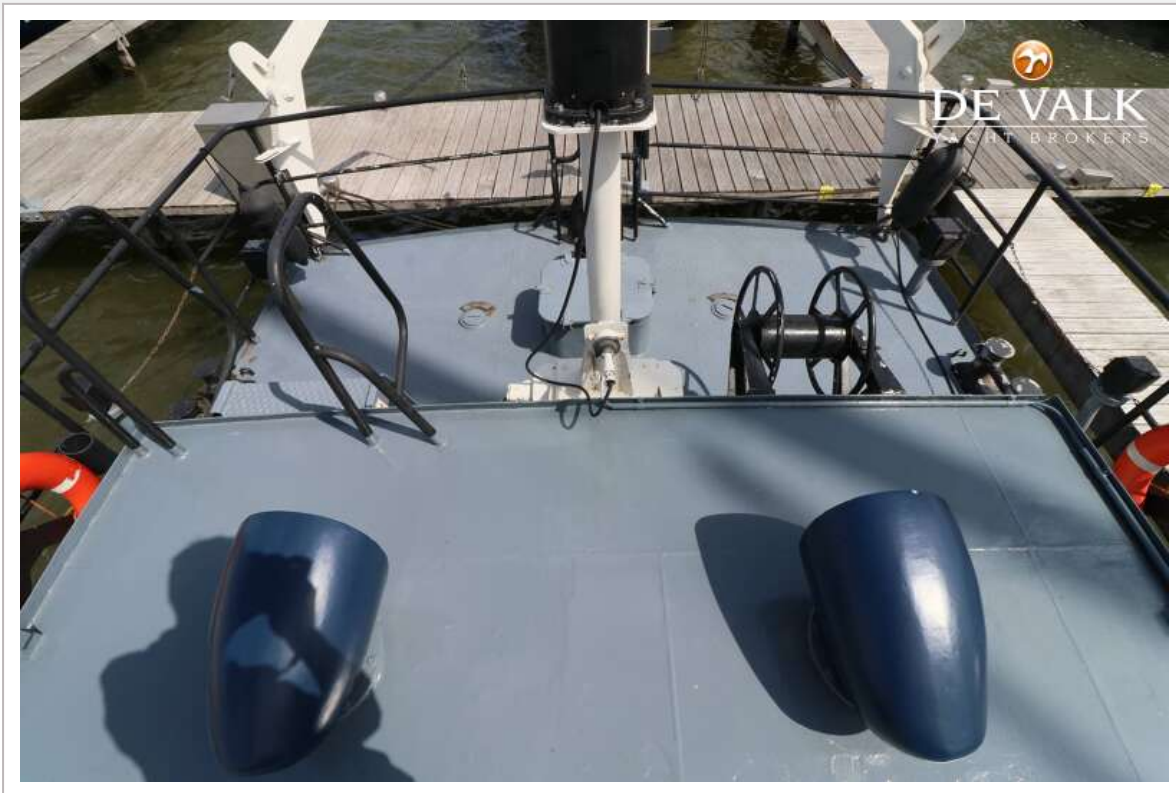
# EX RESEARCH VESSEL M.Y. TYPE MI-400



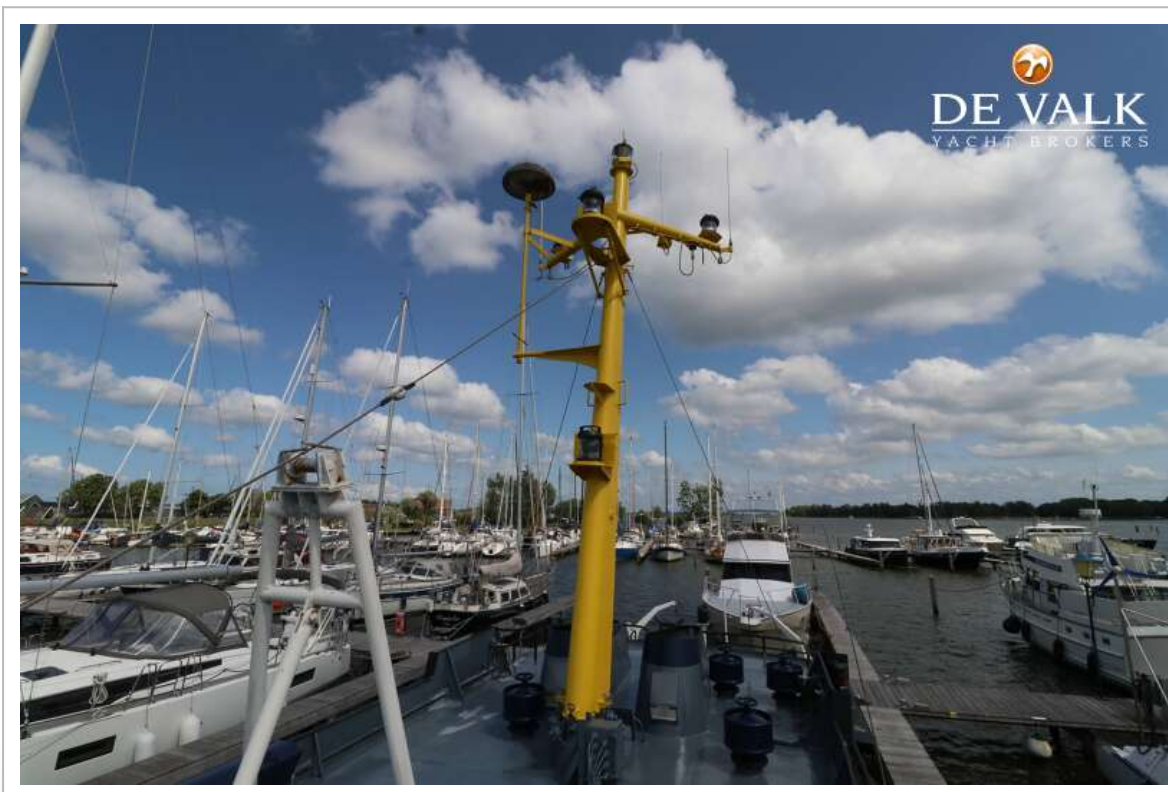
# EX RESEARCH VESSEL M.Y. TYPE MI-400



# EX RESEARCH VESSEL M.Y. TYPE MI-400



# EX RESEARCH VESSEL M.Y. TYPE MI-400



# EX RESEARCH VESSEL M.Y. TYPE MI-400



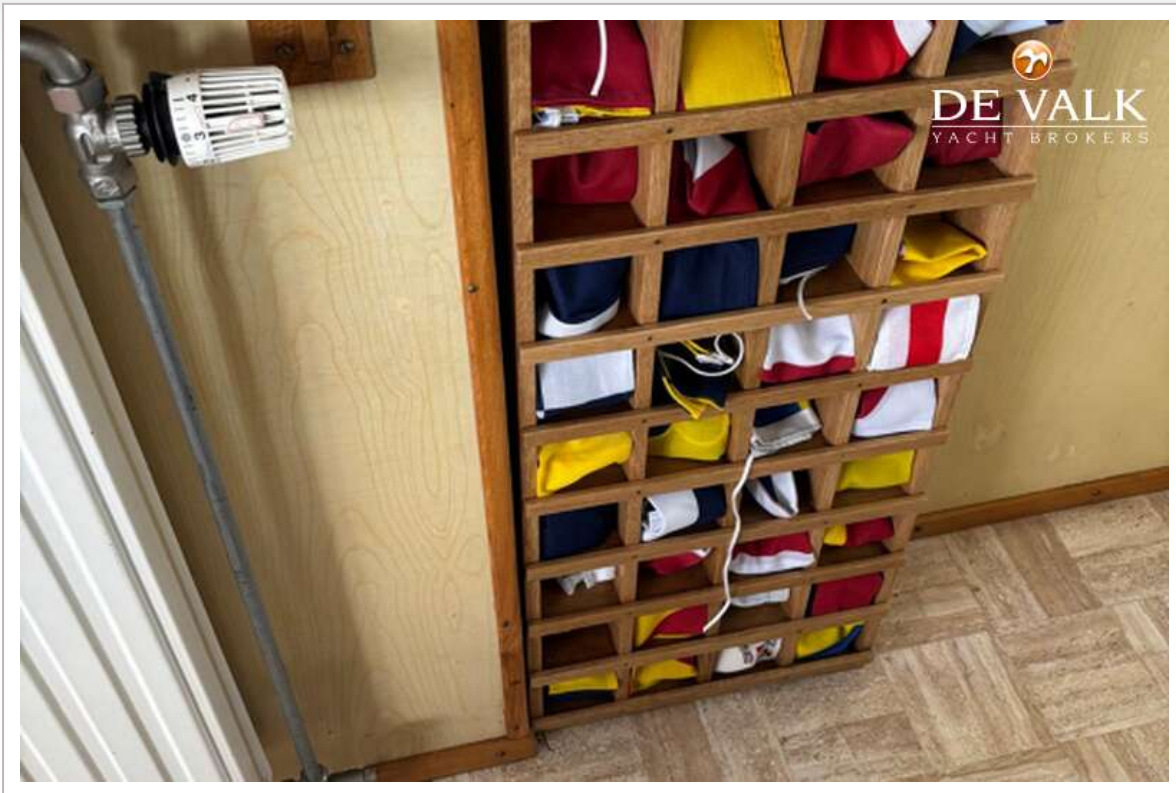
# EX RESEARCH VESSEL M.Y. TYPE MI-400



# EX RESEARCH VESSEL M.Y. TYPE MI-400



# EX RESEARCH VESSEL M.Y. TYPE MI-400



# EX RESEARCH VESSEL M.Y. TYPE MI-400



# EX RESEARCH VESSEL M.Y. TYPE MI-400



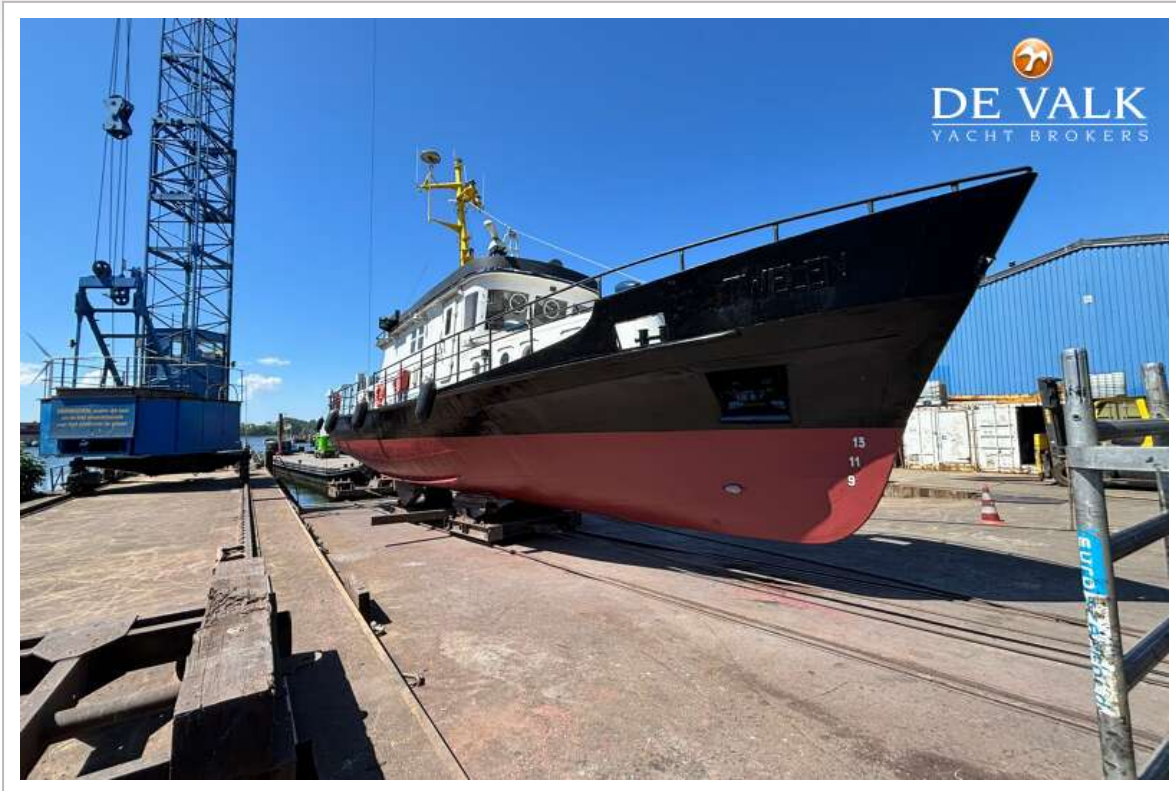
# EX RESEARCH VESSEL M.Y. TYPE MI-400



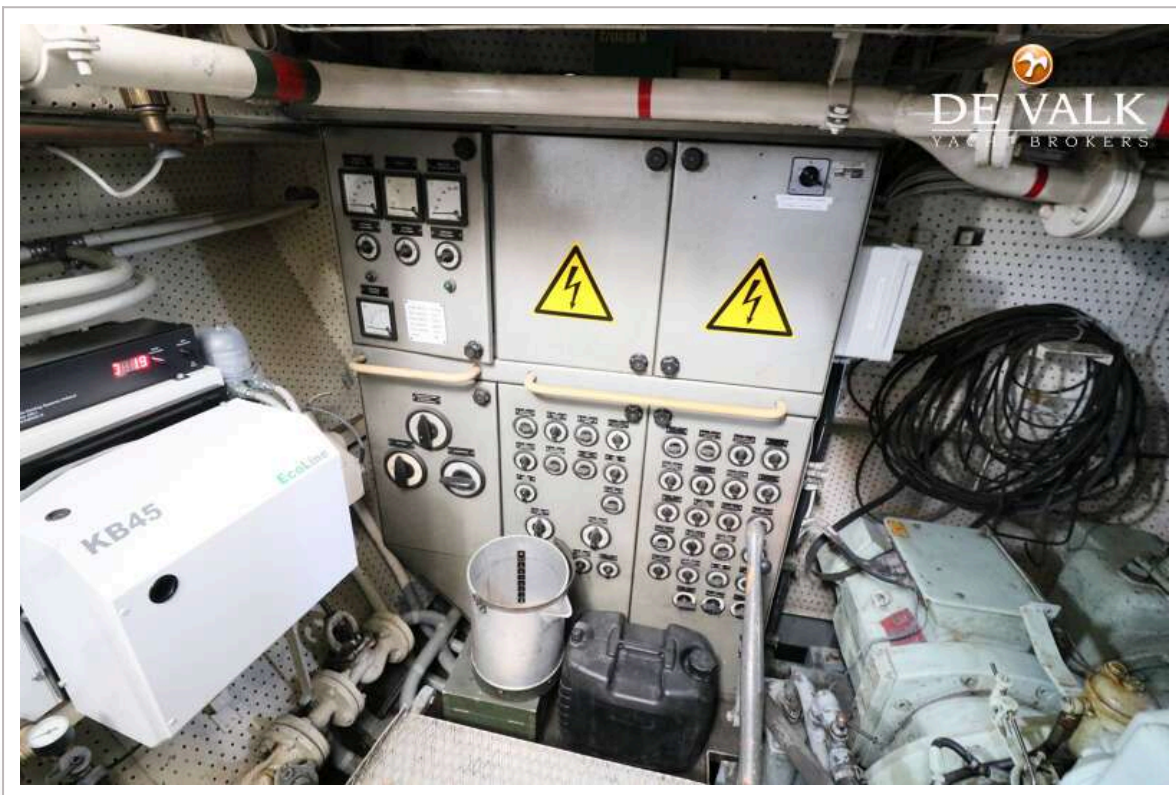
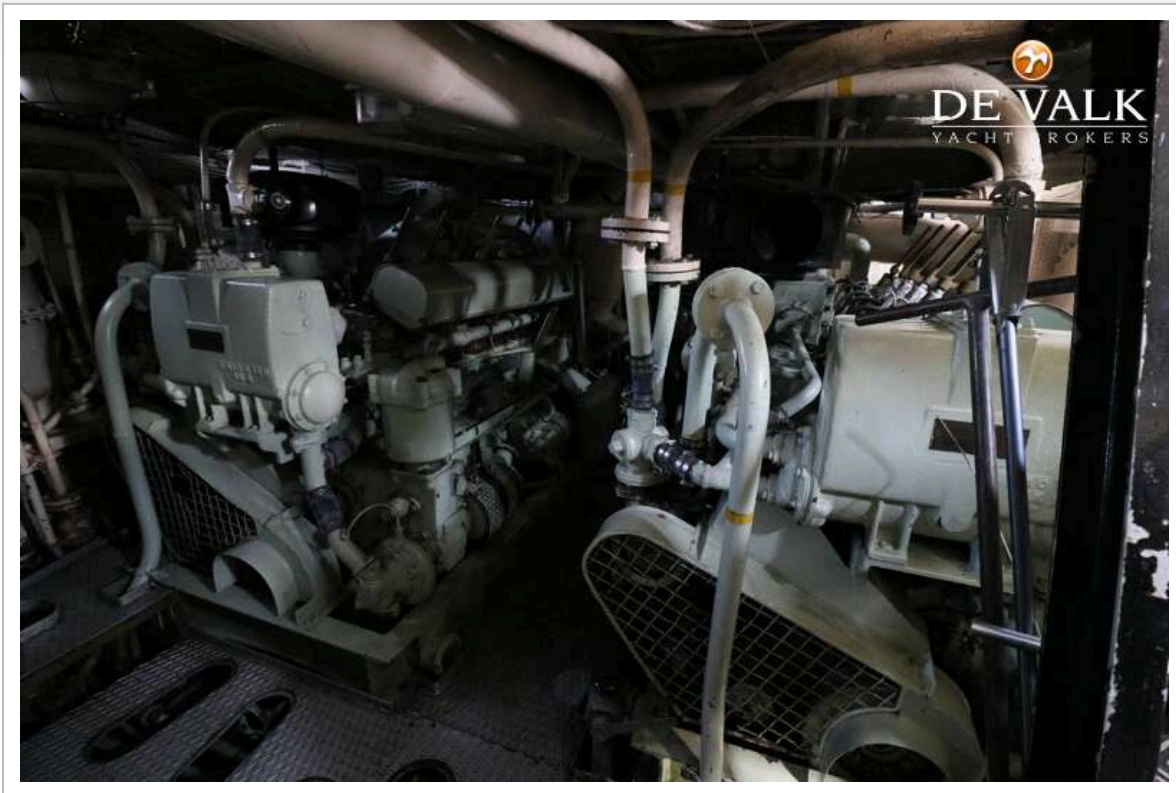
# EX RESEARCH VESSEL M.Y. TYPE MI-400



# EX RESEARCH VESSEL M.Y. TYPE MI-400



# EX RESEARCH VESSEL M.Y. TYPE MI-400



# EX RESEARCH VESSEL M.Y. TYPE MI-400

