



TOY MARINE 68



TOY MARINE 68

BROKER'S COMMENTS

This TOY MARINE 68 is a prime example of Italian craftsmanship, offering luxury and performance in equal measure. With its spacious interior, accommodating 6 guests across 3 cabins, including a crew cabin. Sun awning, tender garage and bathing platform, synonyms of fun and enjoyment. The TOY MARINE 68 offers both relaxation and entertaining thanks to its powerful twin CAT engines ensuring safe navigation.

Valerio Biondi

SPECIFICATIONS

Dimensions	20.46 x 5.30 x 1.30 (m)	Builder	Toy Marine
Built	2009	Cabins	4
Material	GRP	Berths	8
Engine(s)	2 x Caterpillar diesel	Hp/Kw	2 x 1,015.00 (hp), 747.04 (kw)
Asking price	€ 950.000 (VAT Paid)	Lying	contact Antibes

CONTACT

Sales office	De Valk Antibes	Telephone	+33 492 91 0202
Address	2, Avenue de Verdun 06600 Antibes FR	E-mail	antibes@devalk.nl

DISCLAIMER

These particulars are given in good faith as supplied but cannot be guaranteed.



GENERAL

Model	TOY MARINE 68
Type	motor yacht
LOA (m)	20,46
Beam (m)	5,30
Draft (m)	1,30
Year built	2009
Builder	Toy Marine
Country	Italy
Designer	Nauta Yachts
Displacement (t)	35
Hull material	GRP
Hull colour	silver gray
Hull shape	deep-V
Superstructure material	GRP
Deck material	GRP
Deck finish	teak
Superstructure deck finish	teak
Flybridge	yes
Flybridge cover	yes
Fuel tank (litre)	6.700
Level indicator (fuel tank)	yes
Freshwater tank (litre)	1.000
Level indicator (freshwater)	yes
Wheel steering	yes
Inside helm position	yes
Flybridge helm position	yes

ACCOMMODATION

Cabins	4
Berths	8



TOY MARINE 68

Crew cabin	1
Crew berths	2
Interior	mahogany
Layout	yes
Floor	carpet
Aft deck	yes
Deck saloon	yes
Saloon	yes
Headroom saloon (m)	2
Navigation center	yes
Dinette	yes
Sliding door to aft deck	yes
Galley	yes
Countertop	plastic
Sink	stainless steel
Cooker	electric
Oven	yes
Fridge	yes
Hot water system	yes
Water pressure system	yes
Manual and/or foot pump	yes
Owners cabin	twin single
Bed length (m)	2
Wardrobe	hanging/drawers/shelves
Bathroom	en suite
Toilet	en suite
Toilet system	electric
Wash basin	in the bathroom
Shower	en suite
Guest cabin 1	bunk bed
Bed length (m)	2
Wardrobe	hanging/drawers/shelves



Bathroom	en suite
Toilet	en suite
Toilet system	electric
Wash basin	in the bathroom
Shower	en suite
Guest cabin 2	twin single
Bed length (m)	2
Wardrobe	hanging/drawers/shelves
Bathroom	en suite
Toilet	en suite
Toilet system	electric
Wash basin	in the bathroom
Shower	en suite
Crew cabin(s)	1
Bathroom (crew)	yes
Toilet (crew)	yes
Toilet system	electric
Wash basin	in the bathroom
Shower (crew)	yes
Washing machine	yes
Flybridge	yes
Tender garage	Hydraulic opening

MACHINERY

No of engines	2
Make	Caterpillar
HP	1015
kW	747.04
Fuel	diesel
Maximum speed (kn)	27
Cruising speed (kn)	22



Gearbox	hydraulic
Bowthruster	Side power
Sternthruster	Side power
Exhaust	yes
Battery charger	yes
Shorepower	with cable

NAVIGATION

Compass	yes
Compass on flybridge	yes
Multi control display	Raymarine
Depth sounder/log	yes
Windset	X2 Raymarine
VHF	yes
VHF handheld	yes
Autopilot	X2 Raymarine ST-6002
Radar/GPS/plotter	X2 Raymarine - Axiom 12' Raymarine Hybrid touch 9' on fly
Electronic chart(s)	yes
Camera	yes
Navigation lights	yes

EQUIPMENT

Sun awning	yes
Cockpit cushions	yes
Bathing platform	yes
Boarding ladder	yes
Gangway	yes
Deck shower	yes
Anchor	yes
Anchor chain	yes
Capstan	yes



Dinghy	yes
Deck crane	hydraulic
Wiper	yes
Fenders	yes
Mooring lines	yes
TracVision ball	Raymarine ST-45
Radio	yes
Cockpit speakers	yes
Speakers in salon	yes
Speakers in cabin	yes
Clock - barometer	yes



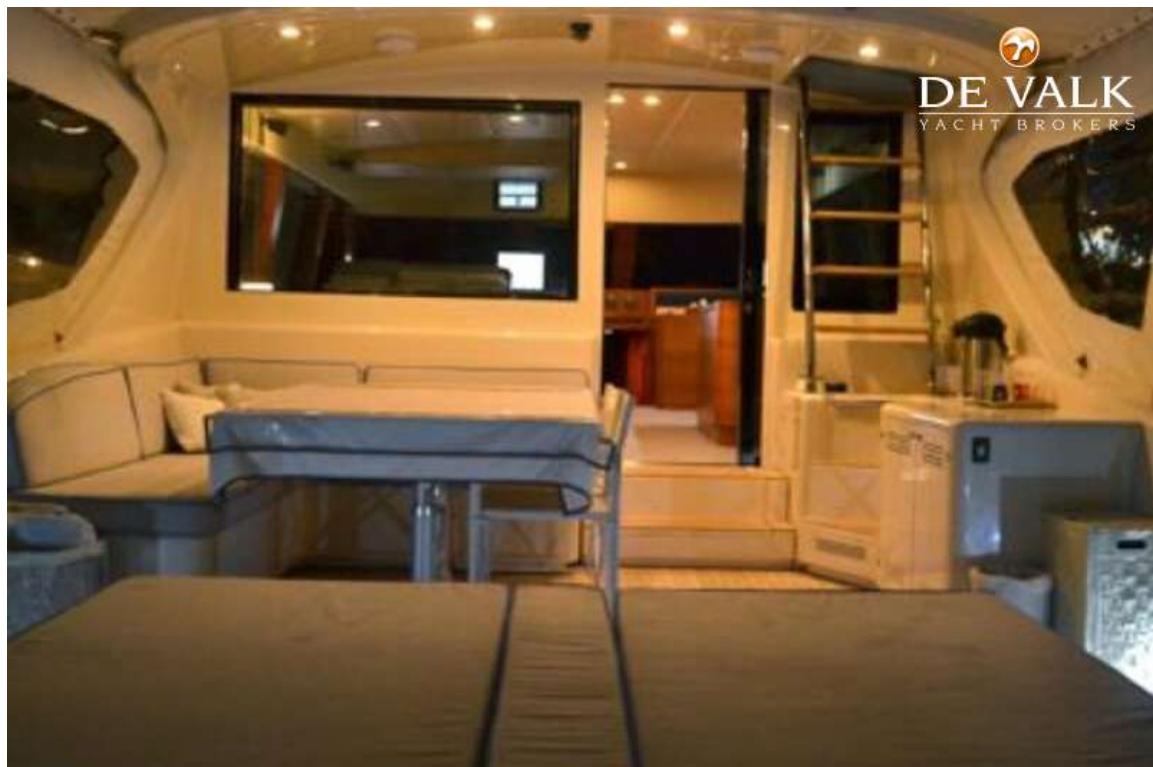


TOY MARINE 68





TOY MARINE 68



TOY MARINE 68



TOY MARINE 68

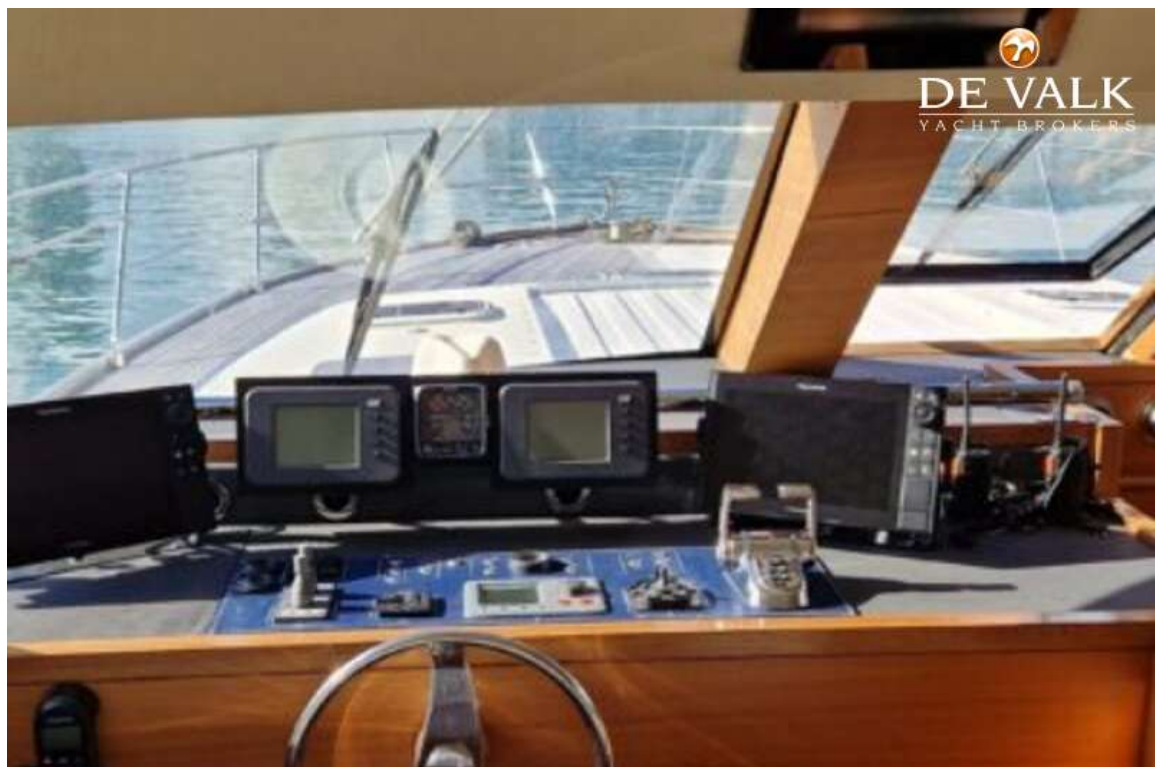


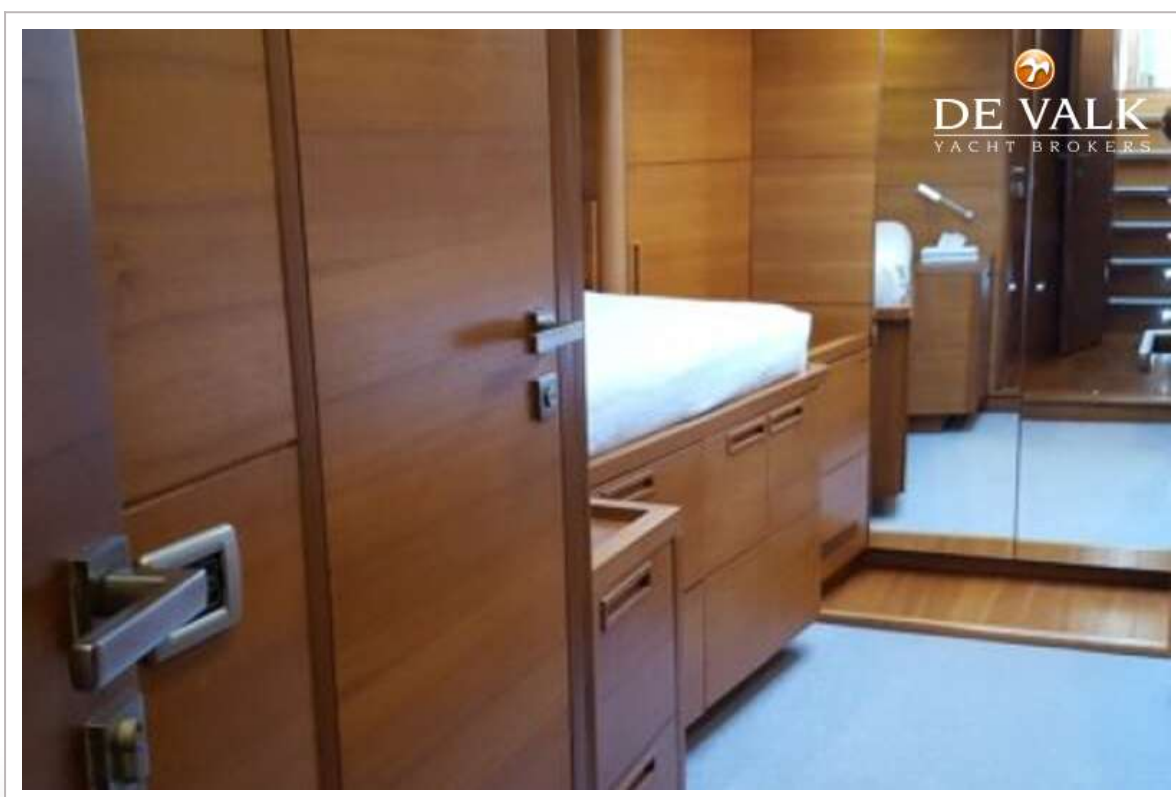


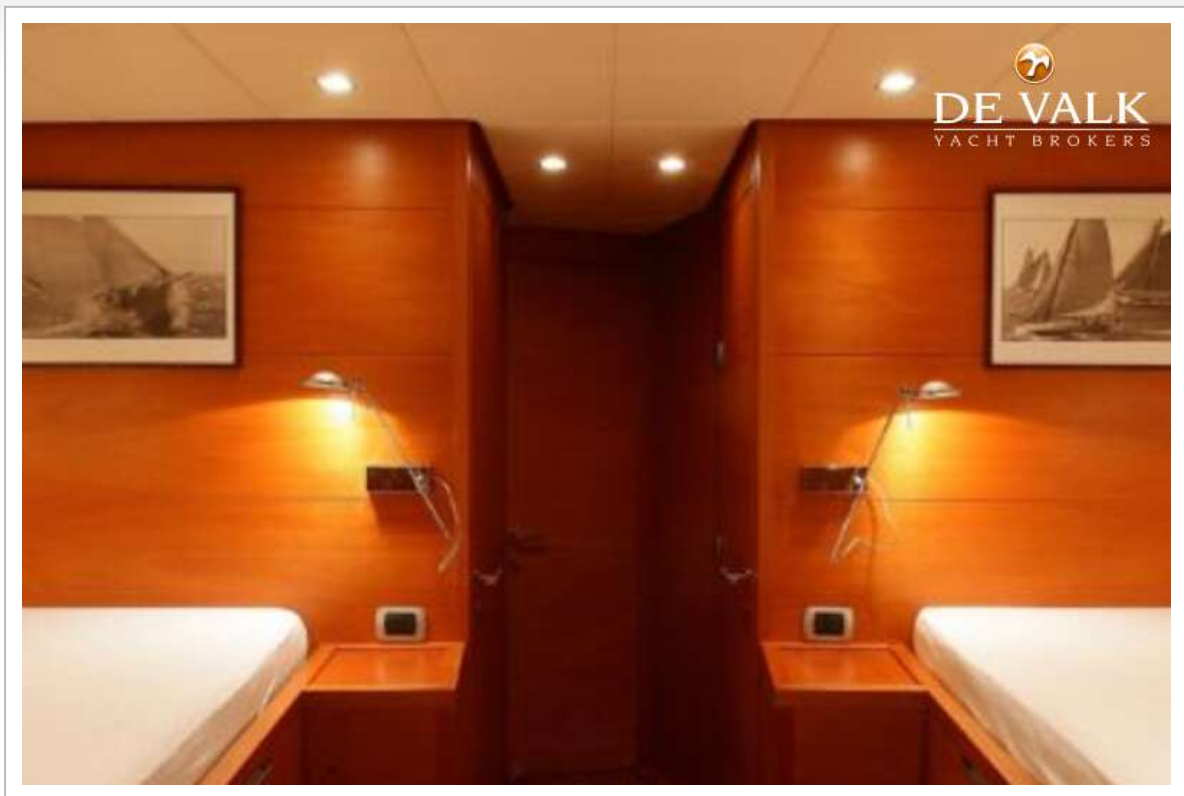
TOY MARINE 68



TOY MARINE 68







TOY MARINE 68

