



DE VALK  
YACHT BROKERS



## HALVORSEN 40 PILOTHOUSE TRAWLER



DE VALK  
YACHT BROKERS

# HALVORSEN 40 PILOTHOUSE TRAWLER

## BROKER'S COMMENTS

"Bespoke built Halvorsen 40 Pilothouse Sedan Trawler by Island Gypsy in the appreciated handcrafted tradition like Grand Banks, Selene and other known Trawler style motor yachts. The interior has been setup with longer stays onboard in mind with either the owner couple and/or with family or friends. Ample deck and walk around space as well. Two modern diesel ensure reliability and stamina for extended travels and enough power to make 15 kn offshore hops to your next port of call. Lying in Finland. Temporary price reduction, buy it now till the end of February 2025. Contact us for more details."

**Marc Weijenberg**

## SPECIFICATIONS

<b>Dimensions</b>	13,49 x 4,00 x 1,20 (m)	<b>Builder</b>	Yardway Marine
<b>Built</b>	2006	<b>Cabins</b>	3
<b>Material</b>	GRP	<b>Berths</b>	7
<b>Engine(s)</b>	2 x Iveco NEF280 diesel	<b>Hp/Kw</b>	2 x 280 (hp), 206,08 (kw)
<b>Asking price</b>	EUR 265.000 (vat: paid)	<b>Lying</b>	not at sales office

## CONTACT

<b>Sales office</b>	De Valk Thuishaven	<b>Telephone</b>	+31 35 5829042
<b>Address</b>	Peperstraat 7 1411 PX Naarden The Netherlands	<b>Fax</b>	+31 35 5829019
		<b>E-mail</b>	thuishaven@devalk.nl

## DISCLAIMER

These particulars are given in good faith as supplied but cannot be guaranteed and cannot be used for contracts.



# HALVORSEN 40 PILOTHOUSE TRAWLER

## GENERAL

<b>Model</b>	HALVORSEN 40 PILOTHOUSE TRAWLER
<b>Type</b>	motor yacht
<b>LOA (m)</b>	13,49
<b>Beam (m)</b>	4,00
<b>Draft (m)</b>	1,20
<b>Air draft (m)</b>	3,50
<b>Air draft min (m)</b>	5,90
<b>Headroom (m)</b>	2,00
<b>Year built</b>	2006
<b>Builder</b>	Yardway Marine
<b>Country</b>	Hong Kong
<b>Designer</b>	Harvey Halvorsen
<b>Displacement (t)</b>	15
<b>CE norm</b>	B
<b>Hull material</b>	GRP
<b>Hull colour</b>	white
<b>Hull shape</b>	hard chine
<b>Keel type</b>	long keel
<b>Superstructure material</b>	GRP
<b>Rubbing strake</b>	stainless steel
<b>Deck material</b>	GRP
<b>Deck finish</b>	non-skid moulded in
<b>Superstructure deck finish</b>	non-skid moulded in
<b>Cockpit deck finish</b>	non-skid moulded in
<b>Dorades</b>	2 x
<b>Deckhatch</b>	yes
<b>Portholes</b>	yes
<b>Mast can be lowered</b>	manual incl. dinghy hoist
<b>Fuel tank (litre)</b>	stainless steel 2 x 1100
<b>Level indicator (fuel tank)</b>	yes



# HALVORSEN 40 PILOTHOUSE TRAWLER

<b>Freshwater tank (litre)</b>	1000
<b>Level indicator (freshwater)</b>	yes
<b>Blackwater tank (litre)</b>	240
<b>Level indicator (blackwater)</b>	yes
<b>Blackwater tank extraction</b>	pump
<b>Wheel steering</b>	hydraulic
<b>Inside helm position</b>	yes
<b>Emergency tiller</b>	yes
<b>Extra info</b>	Various sliding windows for extra ventilation,

## ACCOMMODATION

<b>Cabins</b>	3
<b>Berths</b>	7
<b>Interior</b>	teak
<b>Floor</b>	teak and holly
<b>Open cockpit</b>	yes
<b>Pilot house</b>	yes
<b>Deck saloon</b>	yes
<b>Headroom saloon (m)</b>	2,10
<b>Heating</b>	central hot water Eberspacher 9,5kW
<b>Chart table</b>	In the pilothouse
<b>Dinette</b>	Salon table with inlay, two comfy chairs
<b>Dinette to convert into berth</b>	(2,00 x 1,20 mtr)
<b>Opening door to cockpit</b>	yes
<b>Galley</b>	yes
<b>Countertop</b>	corian
<b>Sink</b>	stainless steel 2 x
<b>Cooker</b>	calor gas 3 burner/pitten/flammig
<b>Oven</b>	calor gas
<b>Extractor</b>	yes



# HALVORSEN 40 PILOTHOUSE TRAWLER

<b>Gas alarm</b>	yes
<b>Fridge</b>	with freezer compartment Isotherm
<b>Hot water system</b>	220V + engine
<b>Water pressure system</b>	electrical
<b>Owners cabin</b>	double bed
<b>Bed length (m)</b>	2,20 x 1,80
<b>Wardrobe</b>	hanging/drawers/shelves
<b>Bathroom</b>	shared I
<b>Toilet</b>	shared
<b>Toilet system</b>	electric
<b>Wash basin</b>	in the bathroom
<b>Shower</b>	shared
<b>Guest cabin 1</b>	bunk bed
<b>Bed length (m)</b>	2,00 x 0,70
<b>Wardrobe</b>	hanging and shelves
<b>Guest cabin 2</b>	single bed
<b>Bed length (m)</b>	2,00

## MACHINERY

<b>No of engines</b>	2
<b>Make</b>	Iveco
<b>Type</b>	NEF280
<b>HP</b>	280
<b>kW</b>	206.08
<b>Fuel</b>	diesel
<b>Year installed</b>	2006
<b>Maximum speed (kn)</b>	15
<b>Cruising speed (kn)</b>	8
<b>Engine hours</b>	1150
<b>Engine cooling system</b>	freshwater heat exchanger
<b>Drive</b>	shaft



# HALVORSEN 40 PILOTHOUSE TRAWLER

<b>Engine controls</b>	bowden cable
<b>Gearbox</b>	hydraulic
<b>Bowthruster</b>	electric Sidepower
<b>Exhaust</b>	watercooled
<b>Propeller type</b>	fixed
<b>Propeller blades</b>	2 x 4
<b>Propeller shaft material</b>	stainless steel
<b>Shaft lubrication</b>	water
<b>Electric bilge pump</b>	3 x
<b>Electrical installation</b>	12v/220v
<b>Generator</b>	Westerbeke 4kW
<b>Running hours generator</b>	350
<b>Start battery</b>	2 x 120ah
<b>Service battery</b>	2 x 120ah
<b>Generator battery</b>	yes
<b>Bowthruster battery</b>	120ah
<b>Battery monitor</b>	yes
<b>Battery charger</b>	Mastervolt
<b>Shorepower</b>	with cable
<b>Trimtabs</b>	Bennett

## NAVIGATION

<b>Compass</b>	Danforth
<b>Electric compass</b>	via autopilot
<b>Depth sounder/log</b>	Raymarine
<b>VHF</b>	Raymarine
<b>Autopilot</b>	Raymarine 6002+
<b>Rudder angle indicator</b>	yes
<b>Radar</b>	Raymarine 4kW
<b>GPS</b>	Raymarine



# HALVORSEN 40 PILOTHOUSE TRAWLER

<b>Plotter</b>	Raymarine W120E
<b>Electronic chart(s)</b>	for Finland/Baltic
<b>Navigation lights</b>	yes
<b>Searchlight</b>	with remote

## EQUIPMENT

<b>Cockpit table</b>	1 x teak
<b>Cockpit chairs</b>	5 x
<b>Bathing platform</b>	yes
<b>Boarding ladder</b>	yes
<b>Transom door</b>	yes
<b>Deck shower</b>	yes
<b>Anchor</b>	CQR Plough
<b>Anchor chain</b>	60 mtr
<b>Windlass</b>	electrical Muir Atlantic
<b>Capstan</b>	Muir
<b>Deck wash</b>	yes
<b>Dinghy</b>	inflatable Suzumar 320
<b>Outboard</b>	Suzuki 4hp (4-stroke)
<b>Sea railing</b>	stainless steel
<b>Grab rail (superstructure)</b>	yes
<b>Pushpit</b>	yes
<b>Pulpit</b>	yes
<b>Wiper</b>	3 x (no wash function)
<b>Horn</b>	electric
<b>Fenders</b>	yes
<b>Mooring lines</b>	yes
<b>Spare parts</b>	for engine, generator
<b>TV</b>	32"
<b>TV receiver</b>	Digital



# HALVORSEN 40 PILOTHOUSE TRAWLER

<b>Radio-cd player</b>	yes
<b>Speakers in salon</b>	yes
<b>Fire extinguisher</b>	yes
<b>Latest extinguisher survey</b>	2023
<b>Extinguisher in engine room</b>	yes
<b>Extra info</b>	Cushions on the forward deck





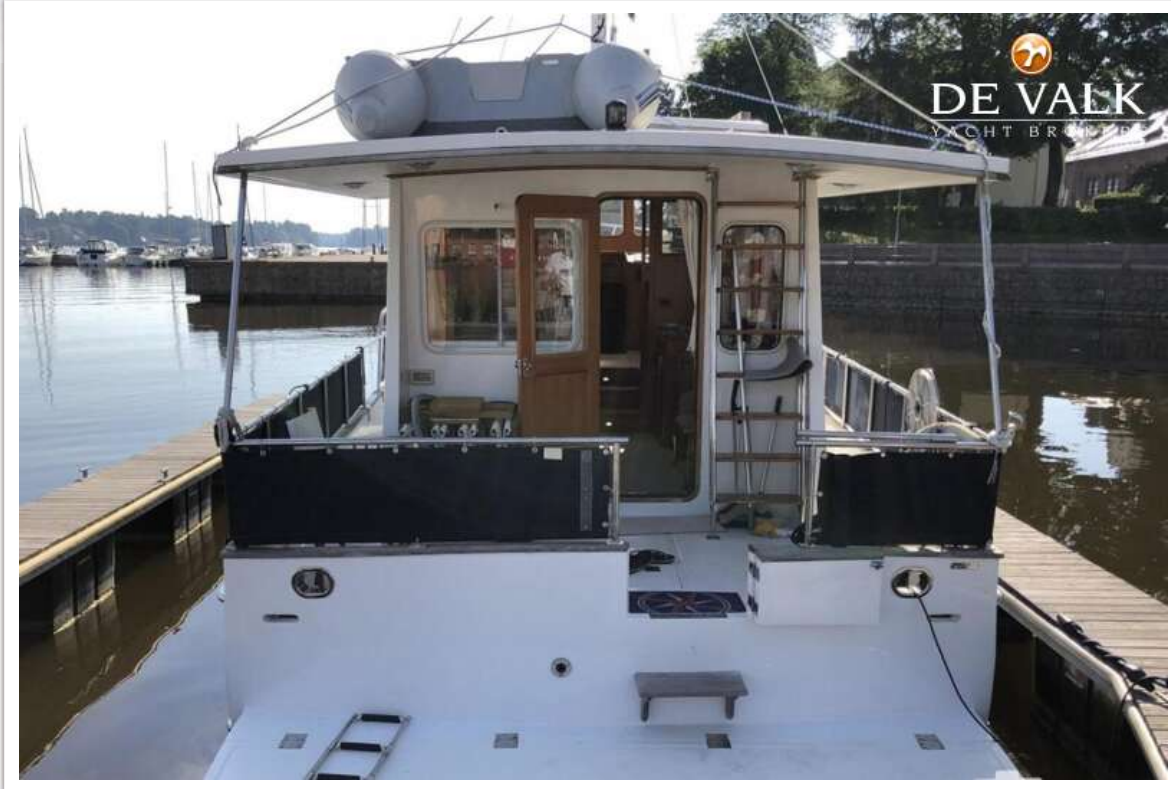
# HALVORSEN 40 PILOTHOUSE TRAWLER



# HALVORSEN 40 PILOTHOUSE TRAWLER



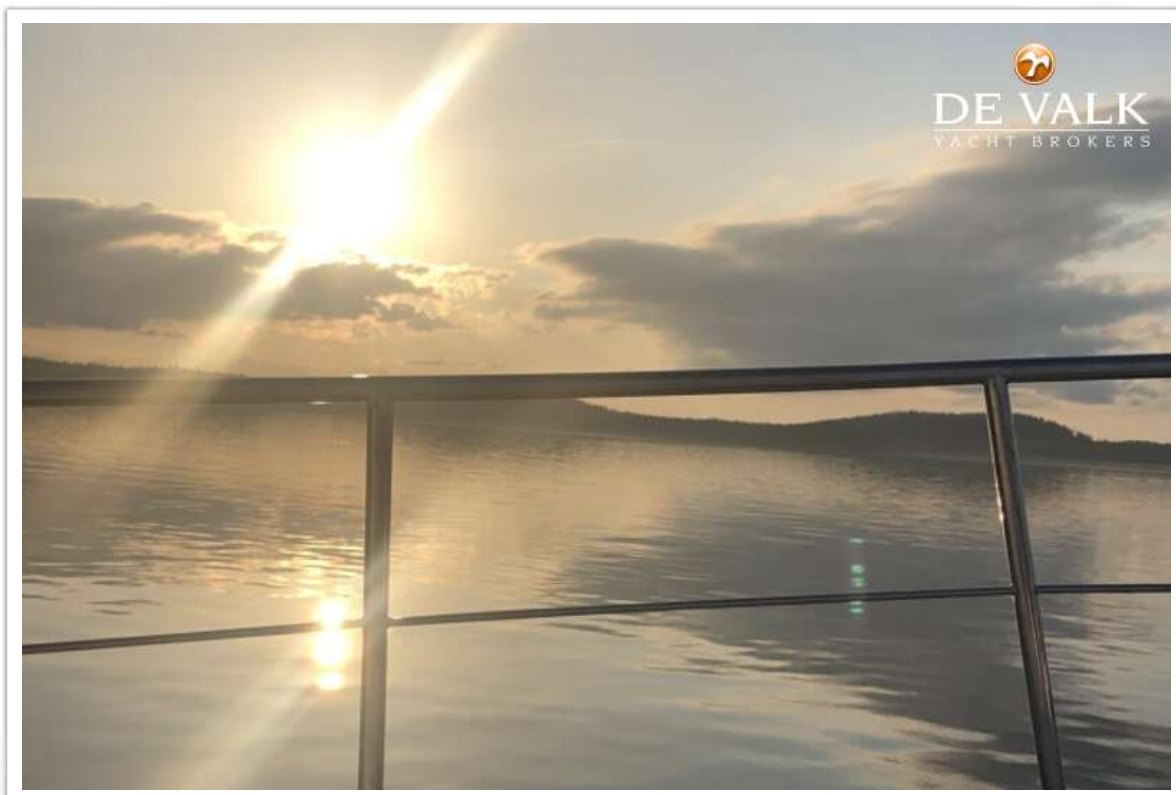
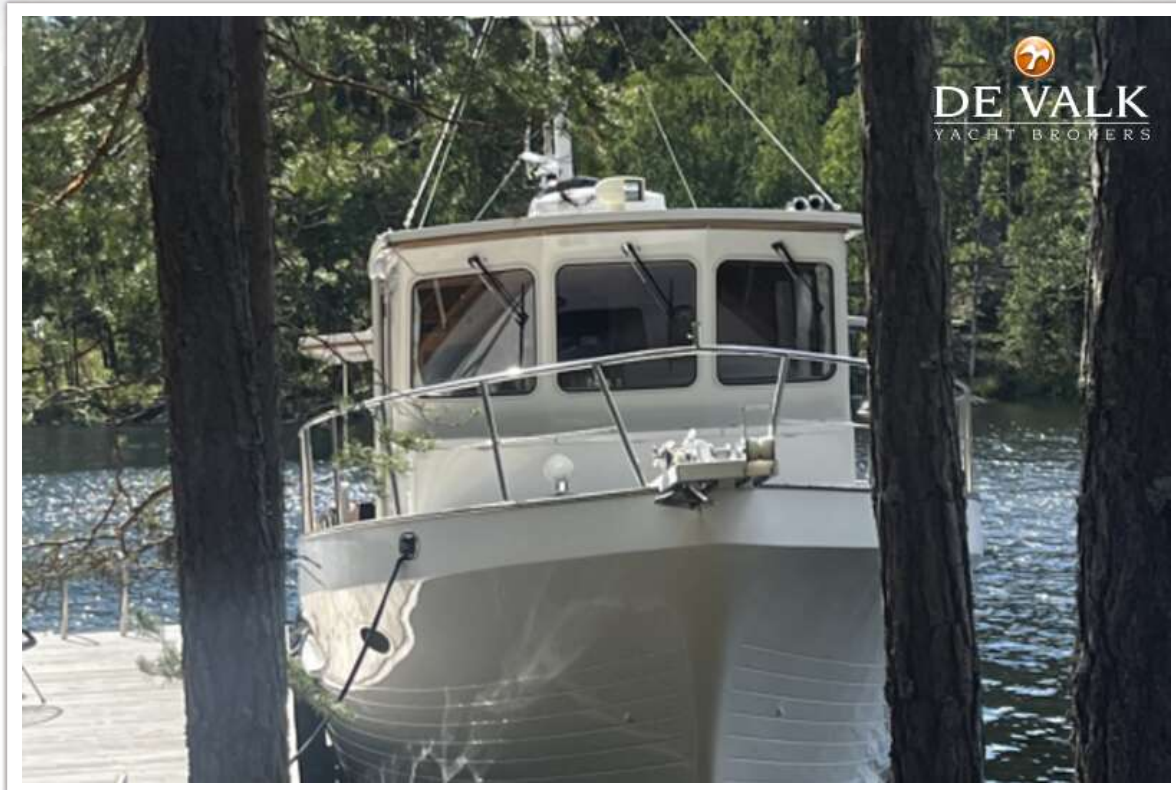
# HALVORSEN 40 PILOTHOUSE TRAWLER



# HALVORSEN 40 PILOTHOUSE TRAWLER



# HALVORSEN 40 PILOTHOUSE TRAWLER



# HALVORSEN 40 PILOTHOUSE TRAWLER



# HALVORSEN 40 PILOTHOUSE TRAWLER



# HALVORSEN 40 PILOTHOUSE TRAWLER





HALVORSEN 40 PILOTHOUSE TRAWLER



# HALVORSEN 40 PILOTHOUSE TRAWLER



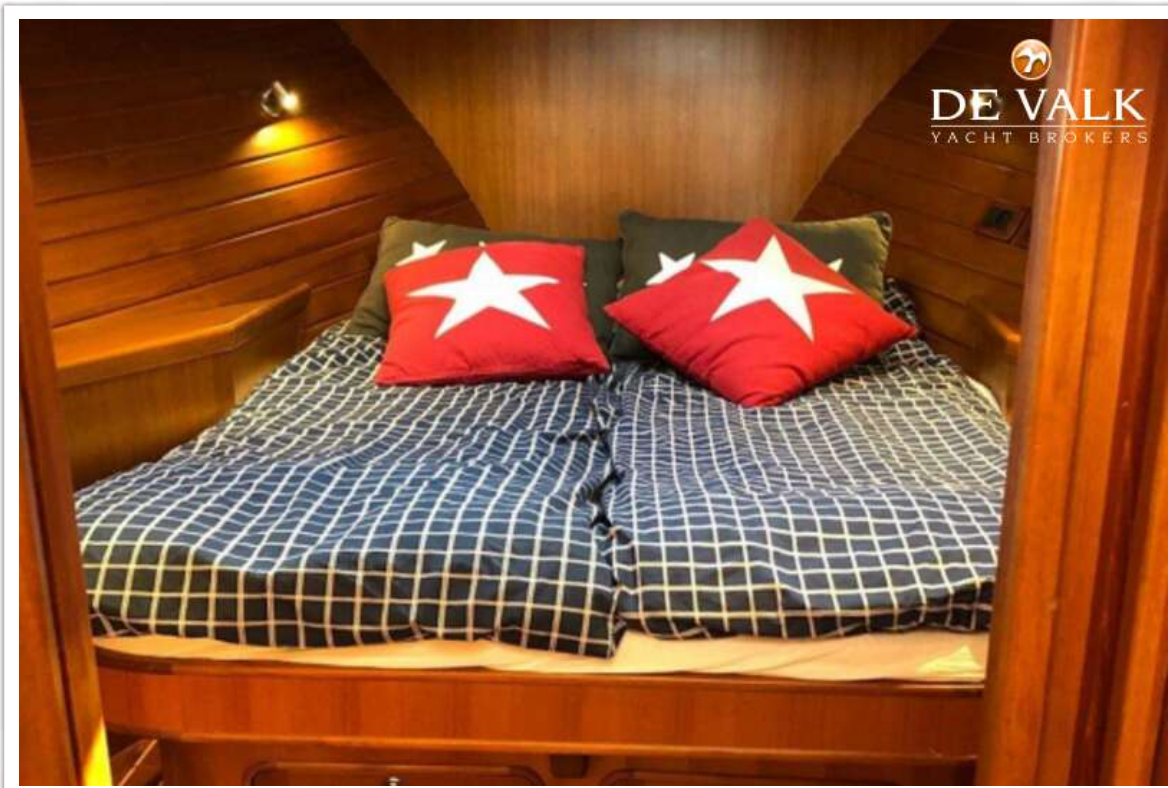
# HALVORSEN 40 PILOTHOUSE TRAWLER



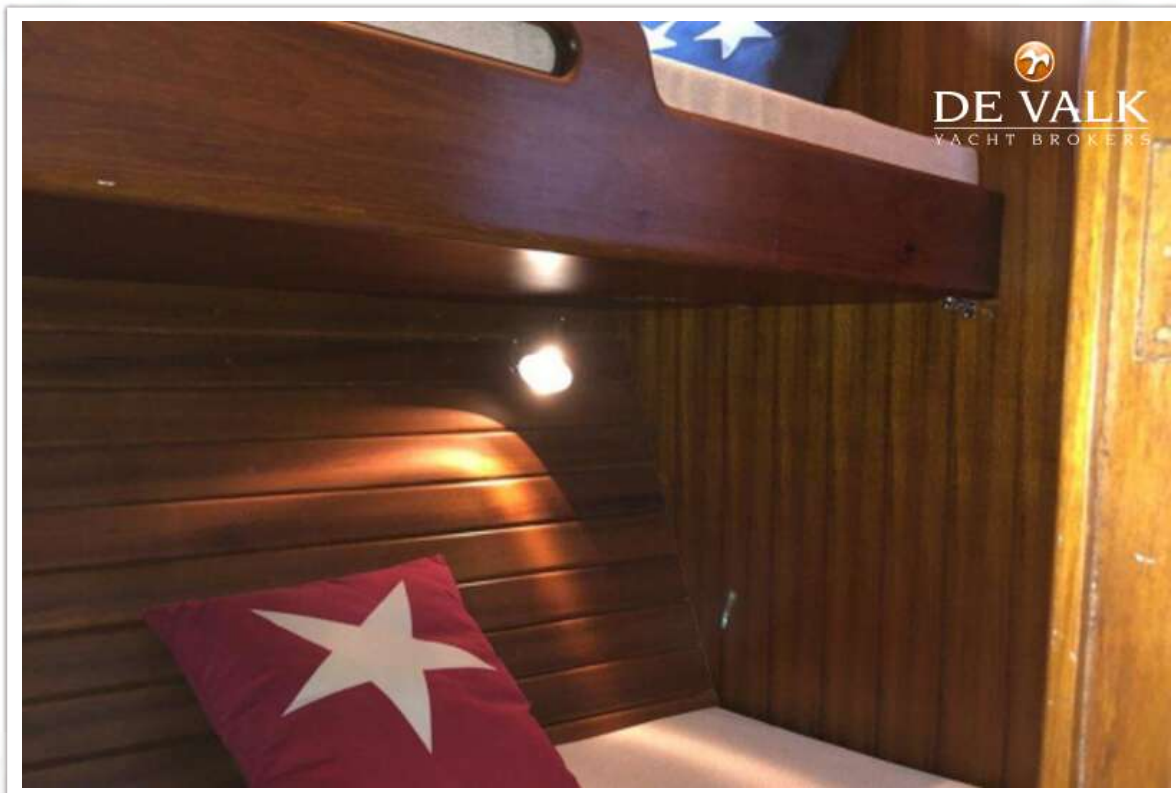
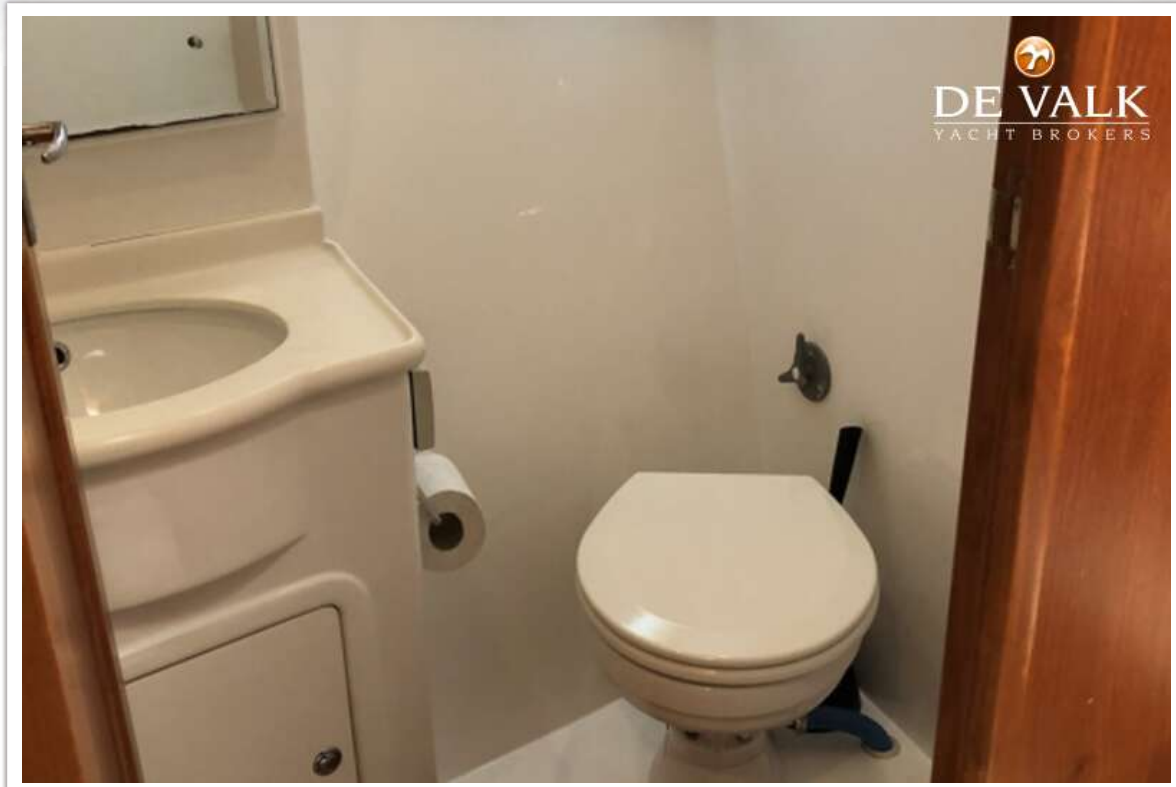
HALVORSEN 40 PILOTHOUSE TRAWLER



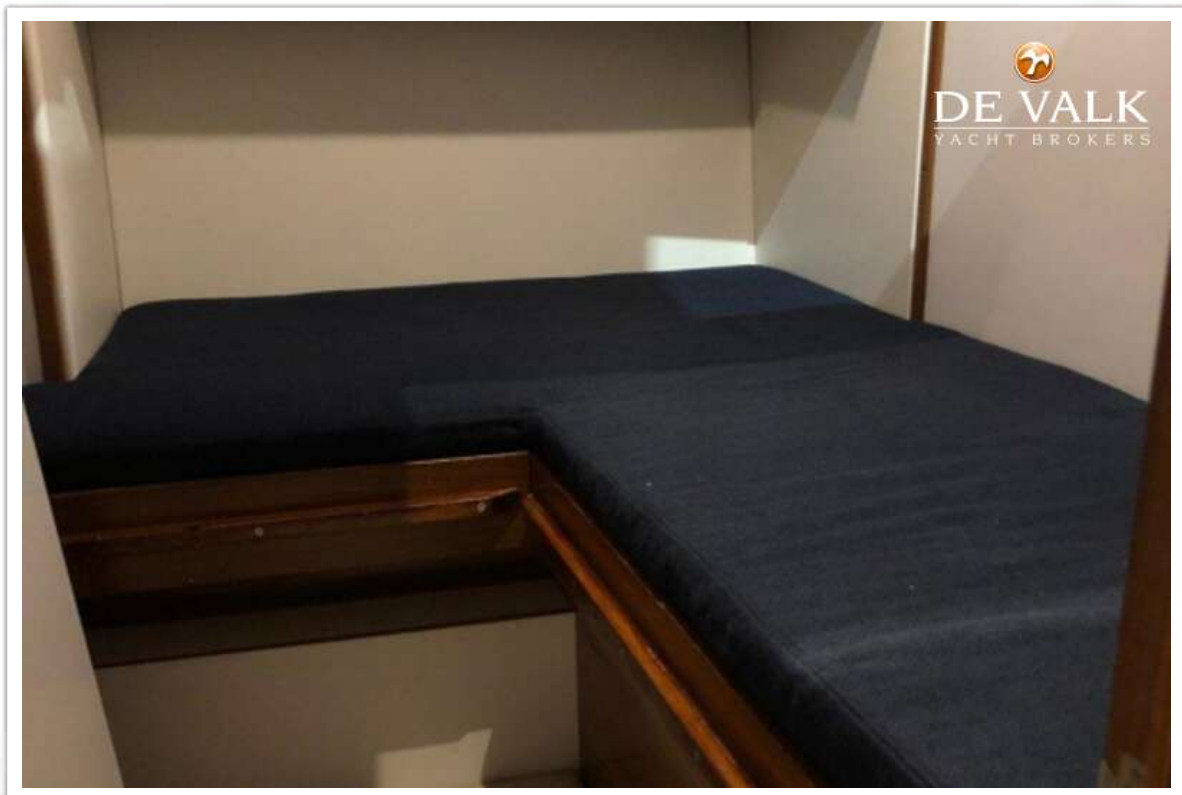
HALVORSEN 40 PILOTHOUSE TRAWLER



# HALVORSEN 40 PILOTHOUSE TRAWLER



# HALVORSEN 40 PILOTHOUSE TRAWLER

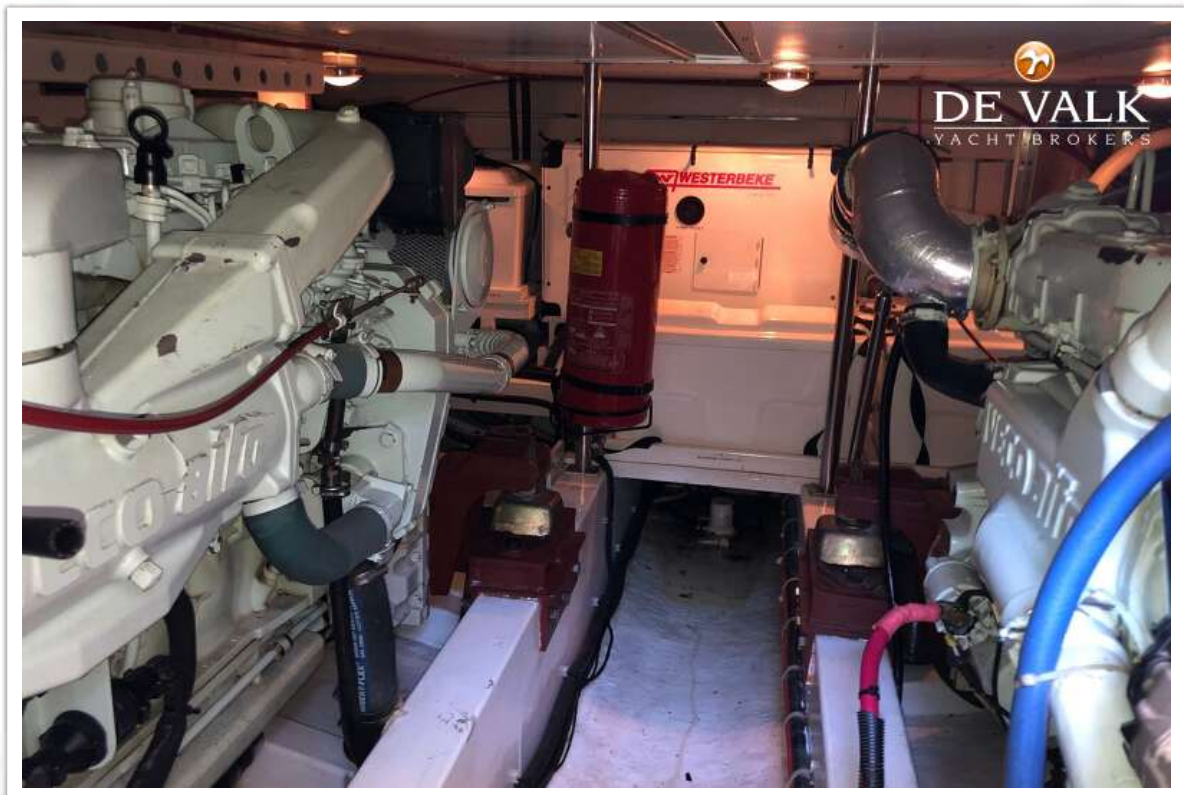


# HALVORSEN 40 PILOTHOUSE TRAWLER





# HALVORSEN 40 PILOTHOUSE TRAWLER



# HALVORSEN 40 PILOTHOUSE TRAWLER

