



## AQUASTAR 38

# AQUASTAR 38

## BROKER'S COMMENTS

The Aquastar 38 with its 440 hp Yanmar will get you to your destination quickly even in rough weather. Once at your destination, the Aquastar is easy to maneuver through the strong bow- and sternthruster. The boat is fully equipped making it the perfect boat to go away for a long time. Would you like to see the boat in person? You are welcome 7 days a week at our sales marina in Loosdrecht.

*Mark Hesselmans*

## SPECIFICATIONS

<b>Dimensions</b>	11.85 x 3.80 x 1.10 (m)	<b>Builder</b>	Jachtwerf P. Valk, Franeker
<b>Built</b>	2002	<b>Cabins</b>	1
<b>Material</b>	GRP	<b>Berths</b>	6
<b>Engine(s)</b>	1 x Yanmar 6YL2-ASTE diesel	<b>Hp/Kw</b>	440.00 (hp), 323.84 (kw)
<b>Asking price</b>	sold (VAT )	<b>Lying</b>	at sales office

## CONTACT

<b>Sales office</b>	De Valk Loosdrecht B.V.	<b>Telephone</b>	+31 (0)35 582 90 30
<b>Address</b>	't Breukeleveense Meentje 6 1231LM Loosdrecht / Wijdmeren NL	<b>E-mail</b>	loosdrecht@devalk.nl

## DISCLAIMER

These particulars are given in good faith as supplied but cannot be guaranteed.



## GENERAL

Model	AQUASTAR 38
Type	motor yacht
LOA (m)	11,85
Beam (m)	3,80
Draft (m)	1,10
Year built	2002
Builder	Jachtwerf P. Valk, Franeker
Country	The Netherlands
Designer	Aquastar Guernsey UK
Displacement (t)	11
CE norm	B
Hull material	GRP
Hull colour	blue
Hull shape	V-shaped hull
Superstructure material	GRP
Rubbing strake	rubber
Deck material	GRP
Deck finish	non-skid moulded in
Cockpit deck finish	teak
Window frame	aluminium
Window material	tempered glass
Deckhatch	yes
Portholes	aluminium
Mast can be lowered	electric
Fuel tank (litre)	stainless steel 1000
Level indicator (fuel tank)	yes
Freshwater tank (litre)	stainless steel 600
Level indicator (freshwater)	yes
Blackwater tank (litre)	stainless steel 40
Blackwater tank extraction	deck extraction + pump



Greywater tank (litre)	polyethylene 350
Wheel steering	hydraulic
Inside helm position	yes
Emergency tiller	yes

## ACCOMMODATION

Cabins	1
Berths	6
Interior	teak
Floor	teak and holly
Open cockpit	yes
Deck saloon	yes
Heating	diesel ducted hot air Autotherm 4D (2022)
Air-conditioning	reverse cycle airco Phone controlled (2024)
Dinette to convert into berth	yes
Opening door to cockpit	yes
Galley	yes
Countertop	wood
Sink	stainless steel
Cooker	induction
Oven	yes
Fridge	yes
Freezer	yes
Hot water system	220V + engine 40L
Water pressure system	electrical
Owners cabin	French bed New Neptune Matres 2024
Wardrobe	hanging and shelves
Bathroom	shared
Toilet	shared
Toilet system	electric
Wash basin	in the bathroom



Shower	shared
Extra info	Double sofa bed in saloon
Extra info	Upholstery interior renewed 2024

## MACHINERY

No of engines	1
Make	Yanmar
Type	6YL2-ASTE
HP	440
kW	323.84
Fuel	diesel
Maximum speed (kn)	21
Cruising speed (kn)	14
Engine hours	1261
Engine cooling system	freshwater heat exchanger
Drive	shaft
Shaft seal	yes
Engine controls	bowden cable
Gearbox	hydraulic Twin Disc MG5061A
Bowthruster	electric 80KGF
Sternthruster	electric 80KGF
Exhaust	watercooled
Propeller type	fixed
Propeller blades	5
Propeller shaft material	stainless steel
Shaft lubrication	water
Manual bilge pump	yes
Electric bilge pump	yes
Bilge alarm	yes
Electrical installation	12+220V
Batteries	yes



Start battery	1x 50 Ah
Service battery	4x Victron AGM 200Ah (2024)
Bowthruster battery	1x 140Ah
Sternthruster battery	yes
Battery monitor	yes
Battery charger/inverter	Victron Multiplus 3000Watt/120Ah with digital app (2024)
Diode battery combiners	yes
Shorepower	with cable

## NAVIGATION

Compass	Simrad IS15
Depth sounder	Simrad IS15
Log	Simrad IS15
VHF	Icon M505
Autopilot	Simrad Robertson AP20
Rudder angle indicator	Autopilot
Radar	Raymarine + Raytheon RL70
GPS	Simrad CE40
AIS transceiver	Didital Yacht transponder/splitter
Navigation lights	yes
Searchlight	yes

## EQUIPMENT

Cockpit cover	2022
Bathing platform	yes
Boarding ladder	stainless steel
Transom door	yes
Deck shower	yes
Anchor	Stainless steel
Anchor chain	yes
Windlass	electrical



# AQUASTAR 38

<b>Davits</b>	stainless steel With BBQ (2024)
<b>Davits controls</b>	manual
<b>Sea railing</b>	stainless steel
<b>Wiper</b>	yes
<b>Horn</b>	electric
<b>Fenders</b>	yes
<b>Mooring lines</b>	yes
<b>TV</b>	Samsung
<b>Radio</b>	yes
<b>Extra info</b>	WiFi on board





# AQUASTAR 38

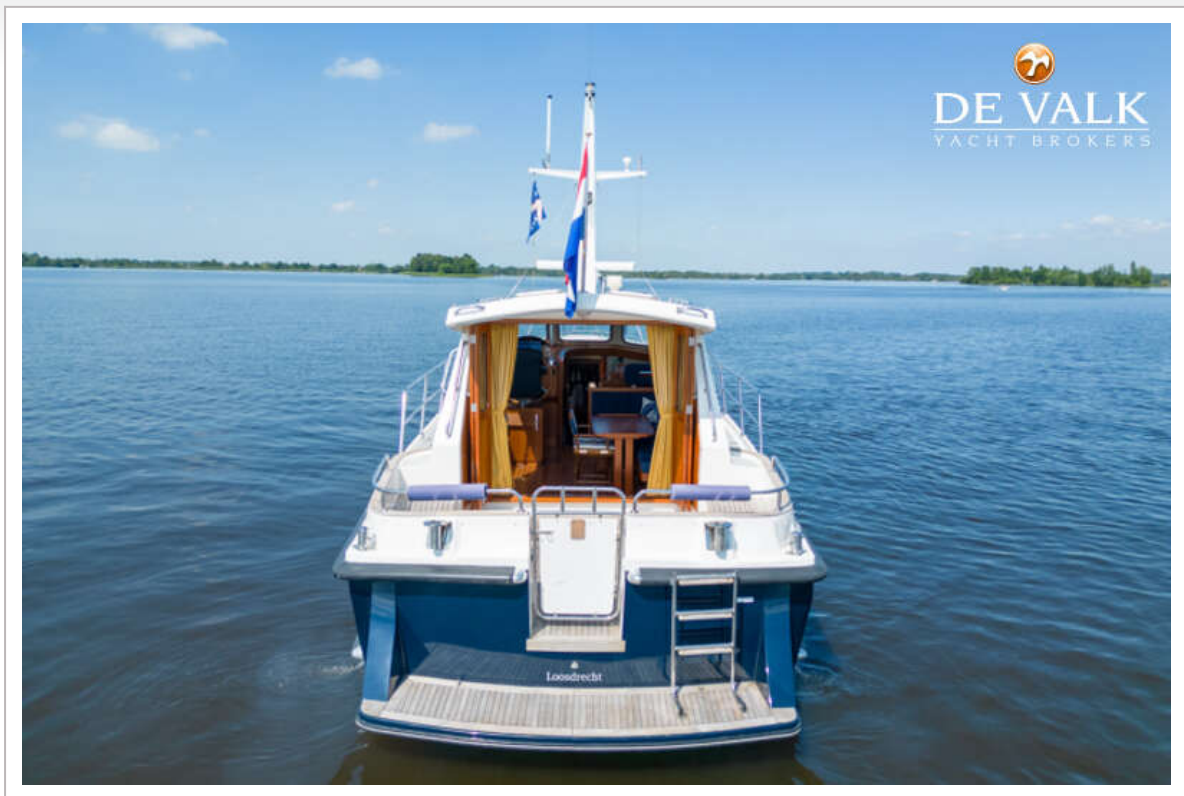




# AQUASTAR 38

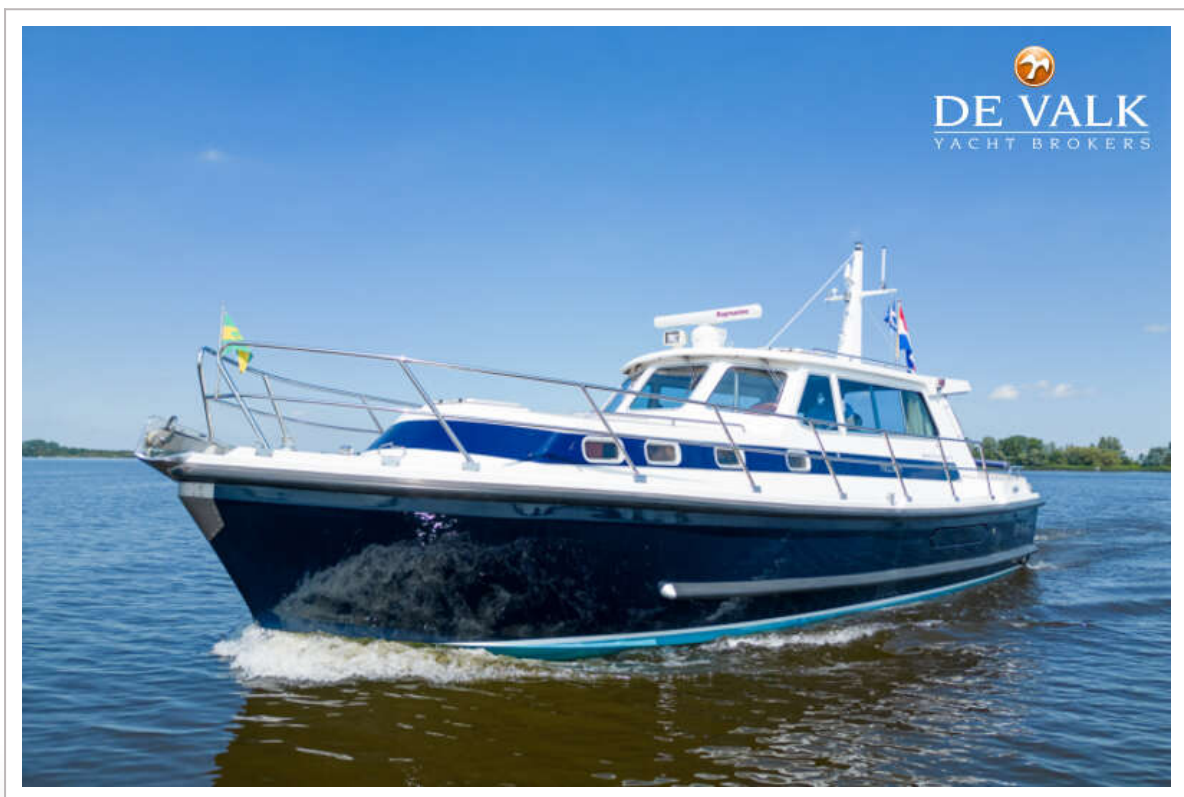


# AQUASTAR 38





# AQUASTAR 38



# AQUASTAR 38





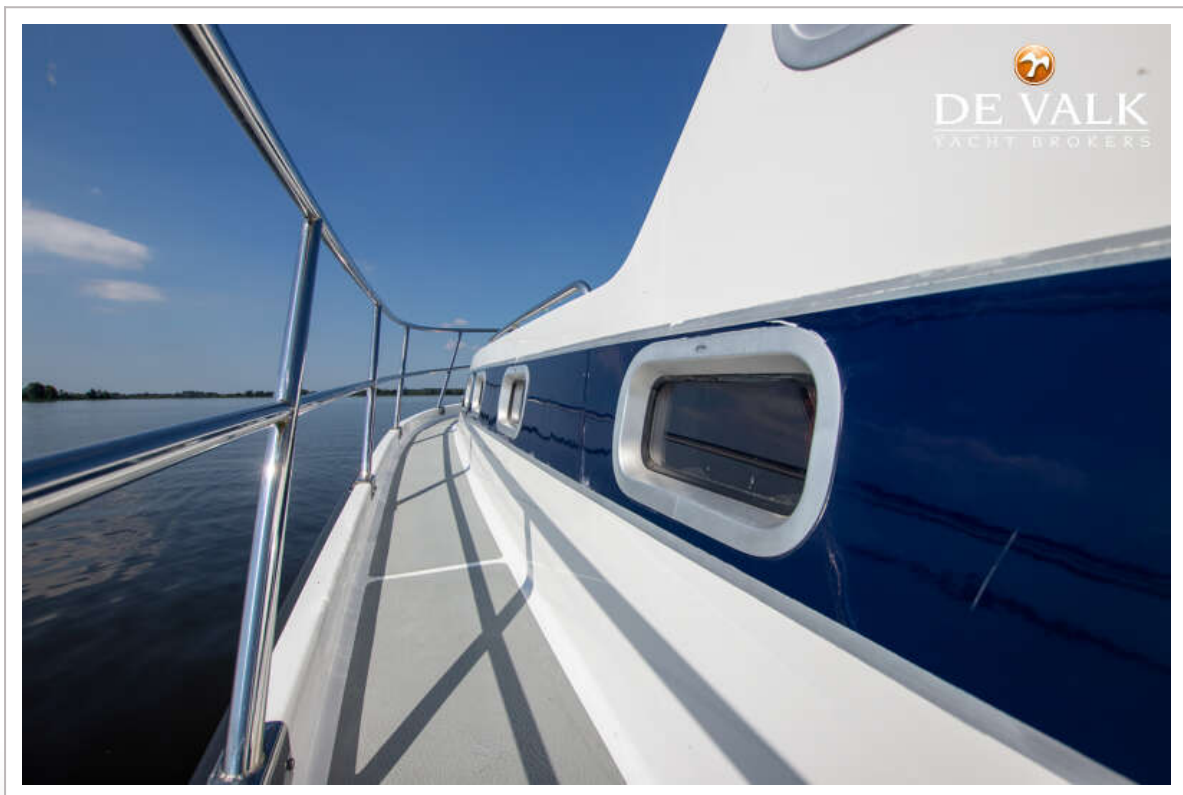
# AQUASTAR 38



# AQUASTAR 38

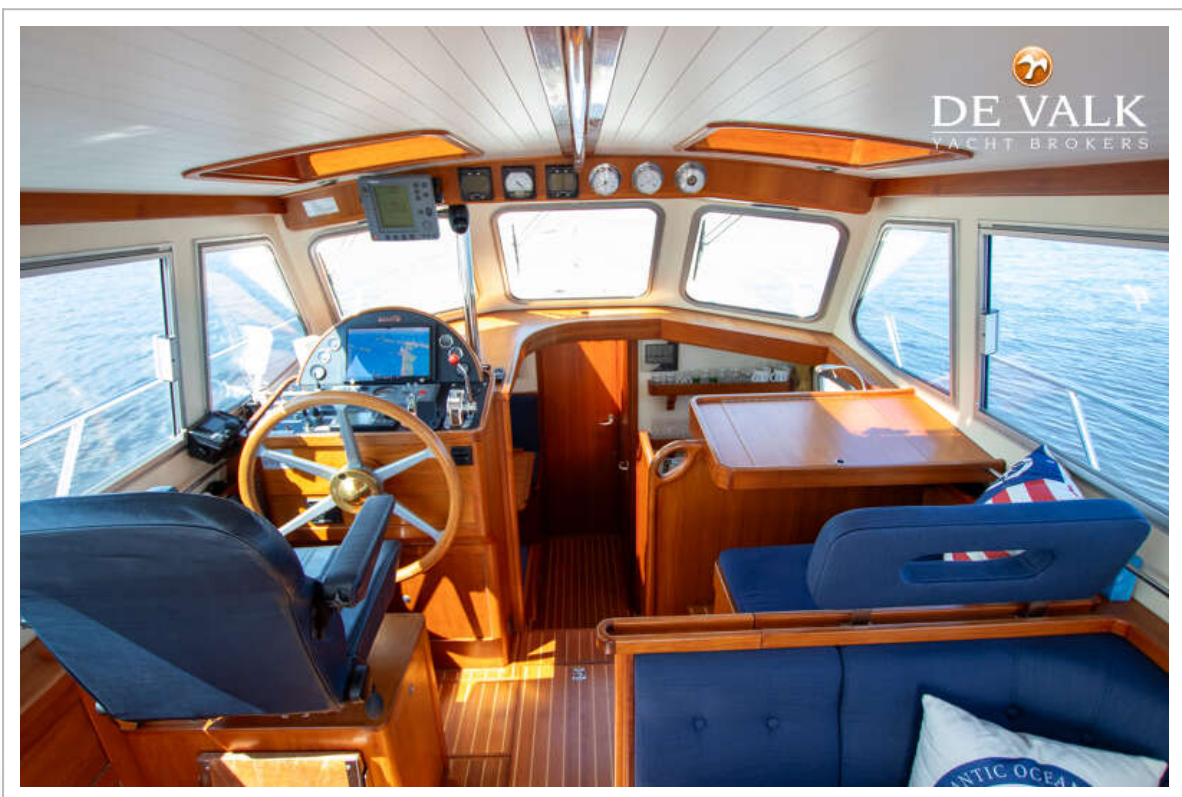
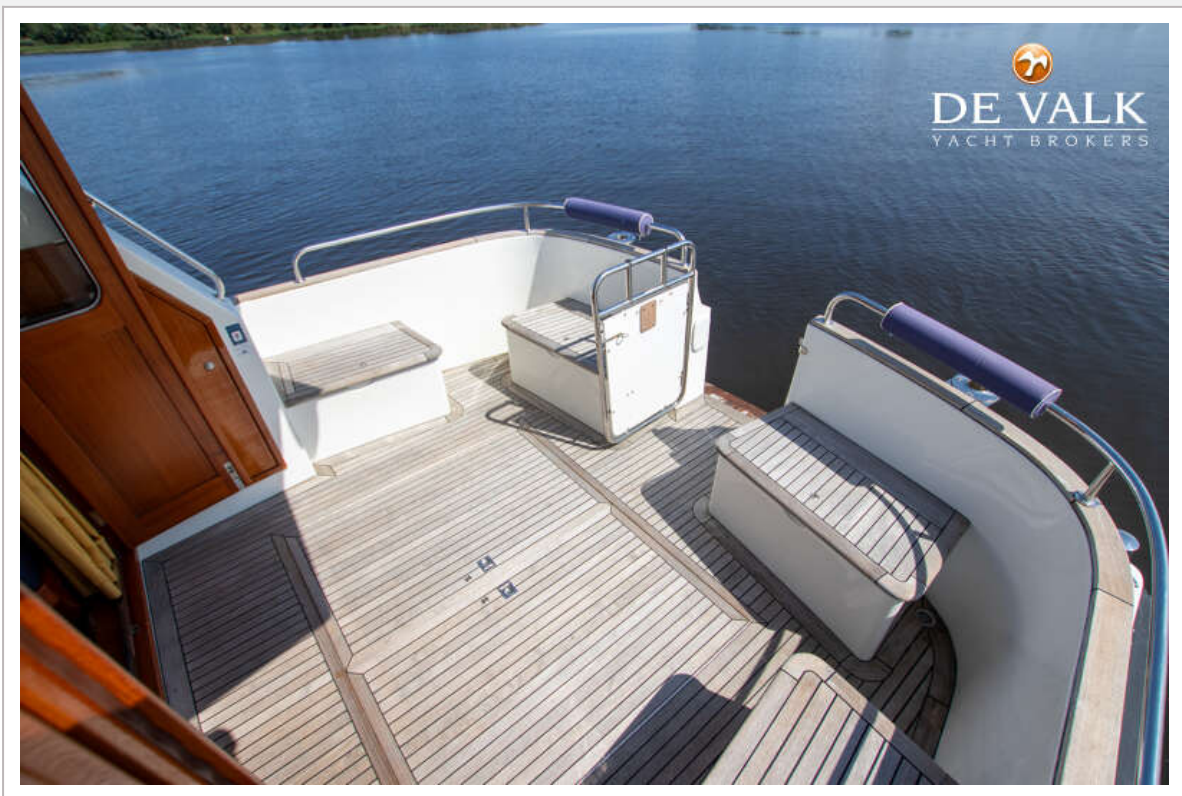


# AQUASTAR 38

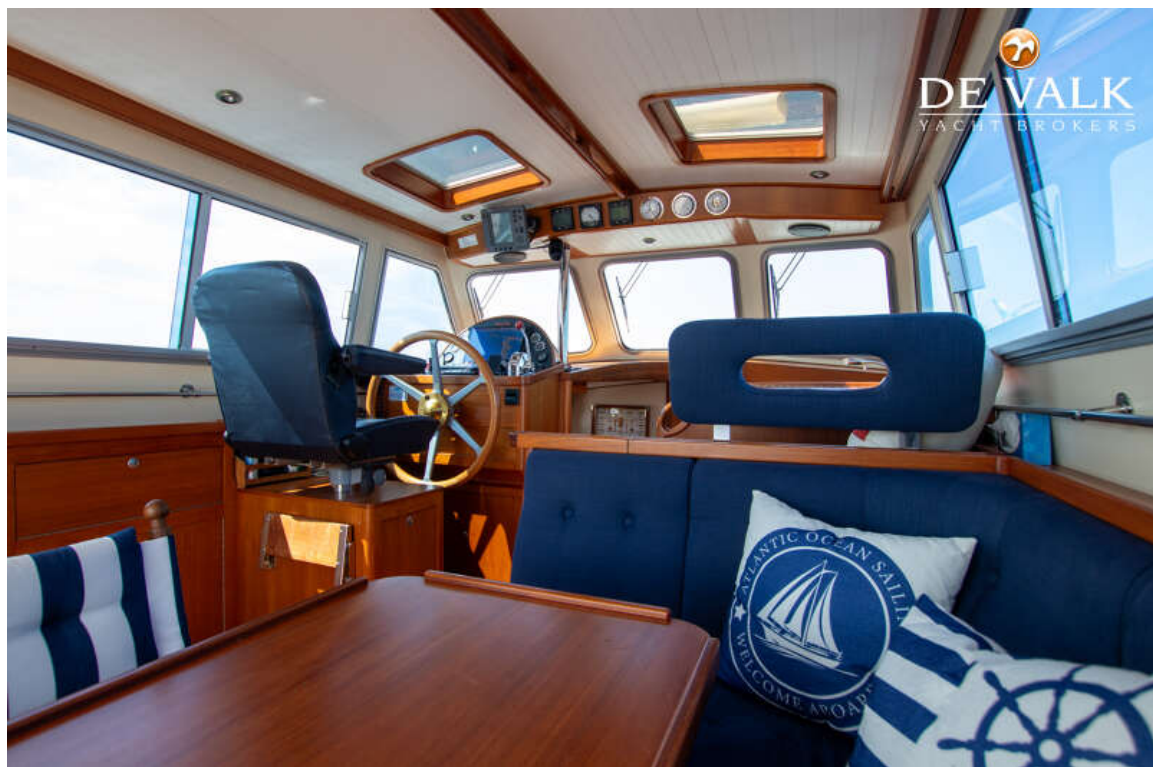




# AQUASTAR 38

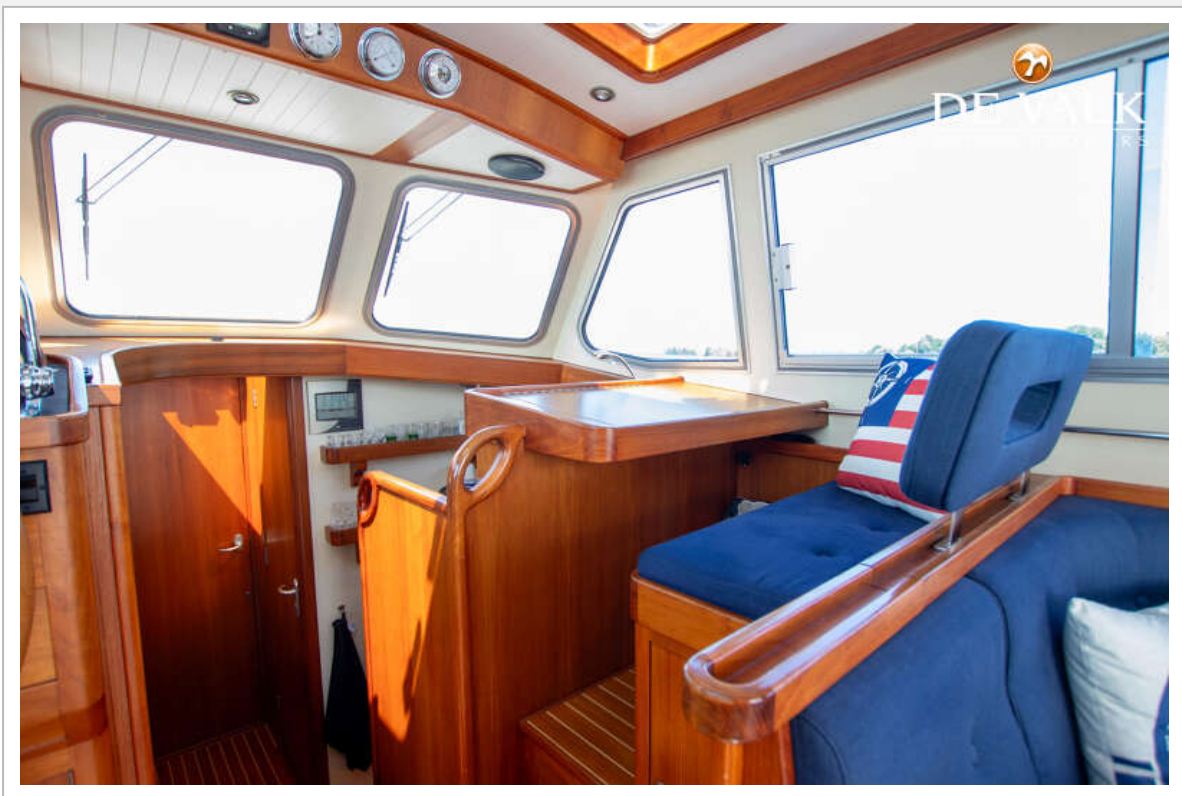


# AQUASTAR 38

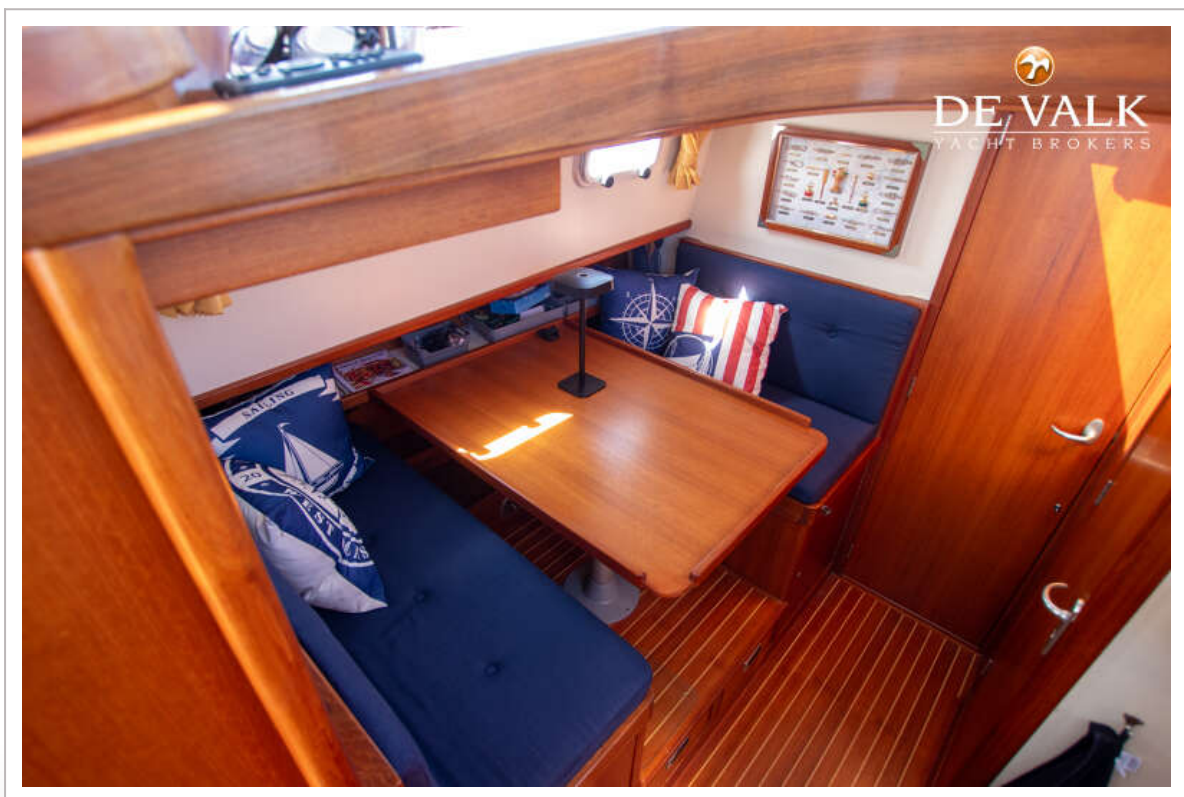
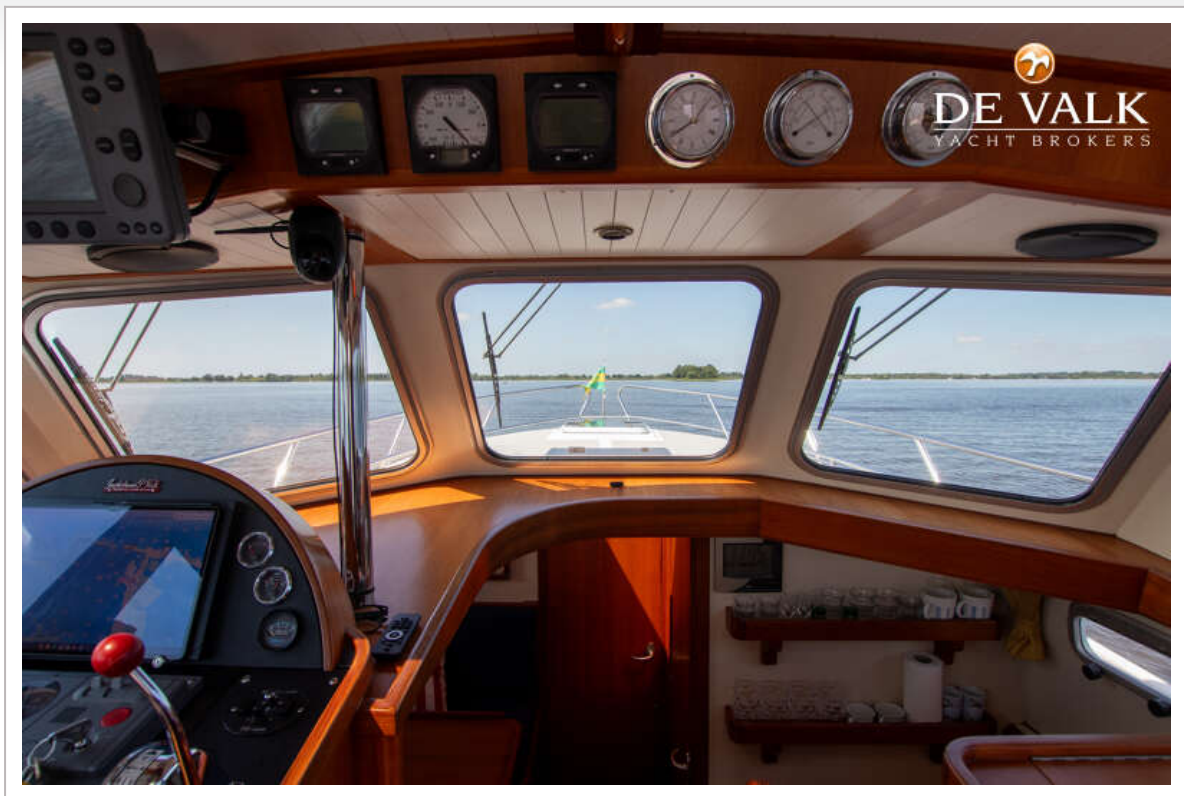




# AQUASTAR 38

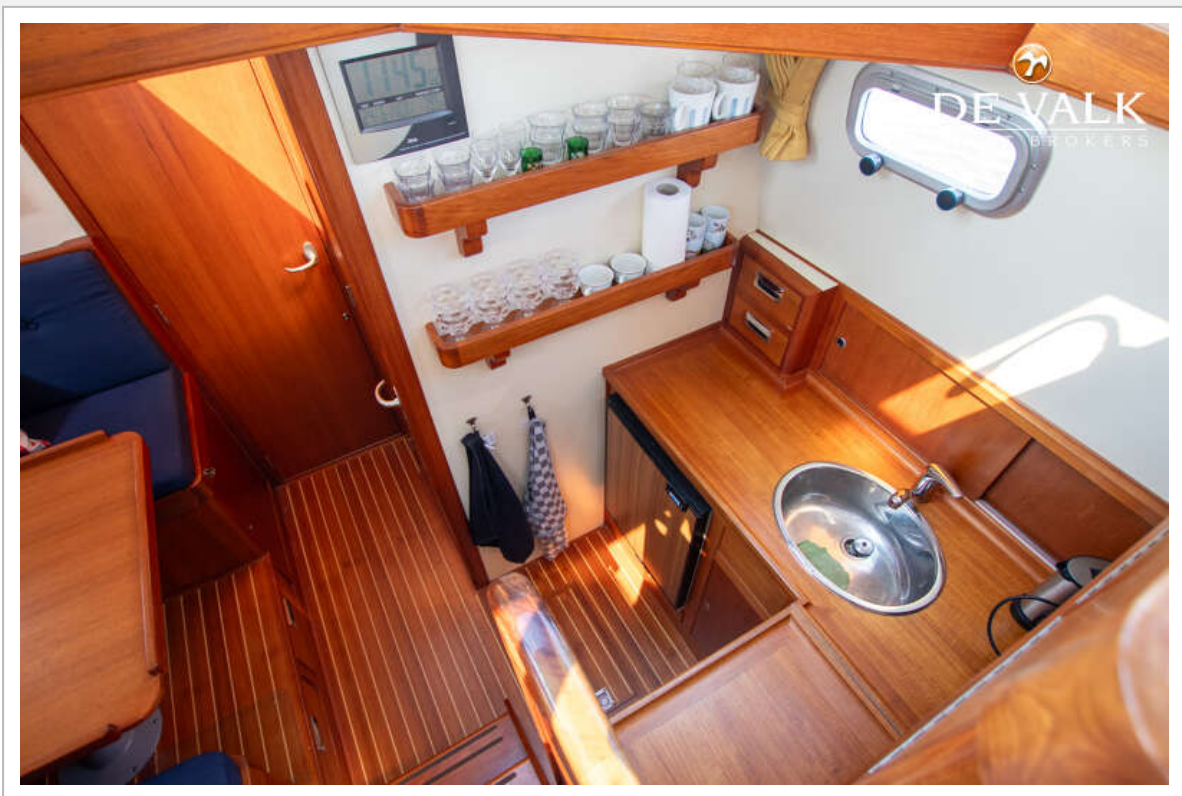


# AQUASTAR 38





# AQUASTAR 38

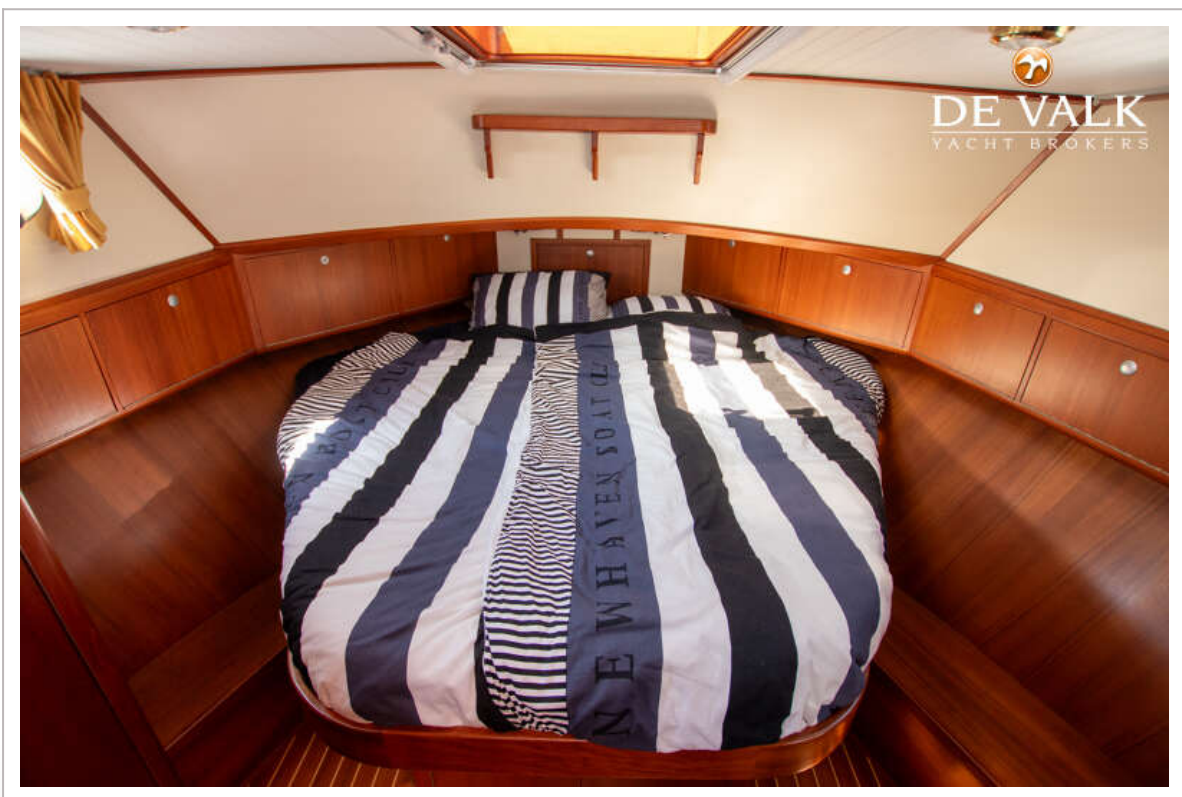


# AQUASTAR 38



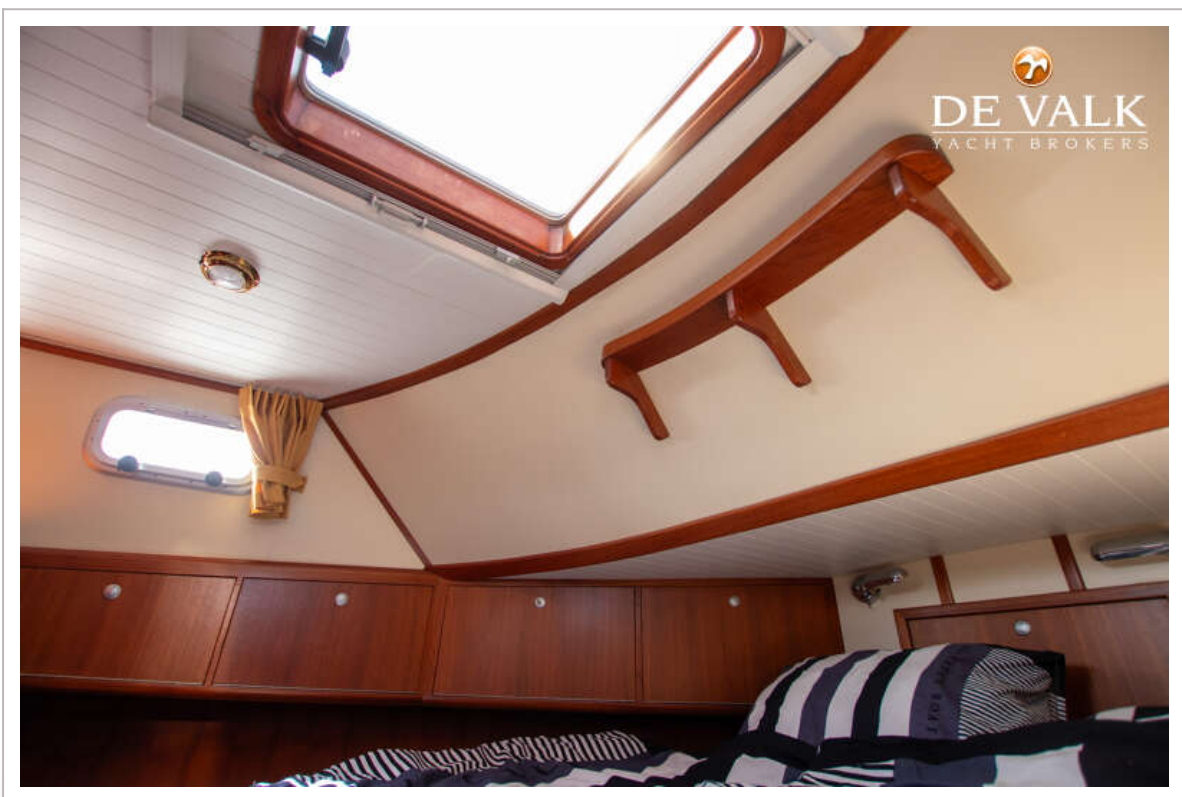


# AQUASTAR 38

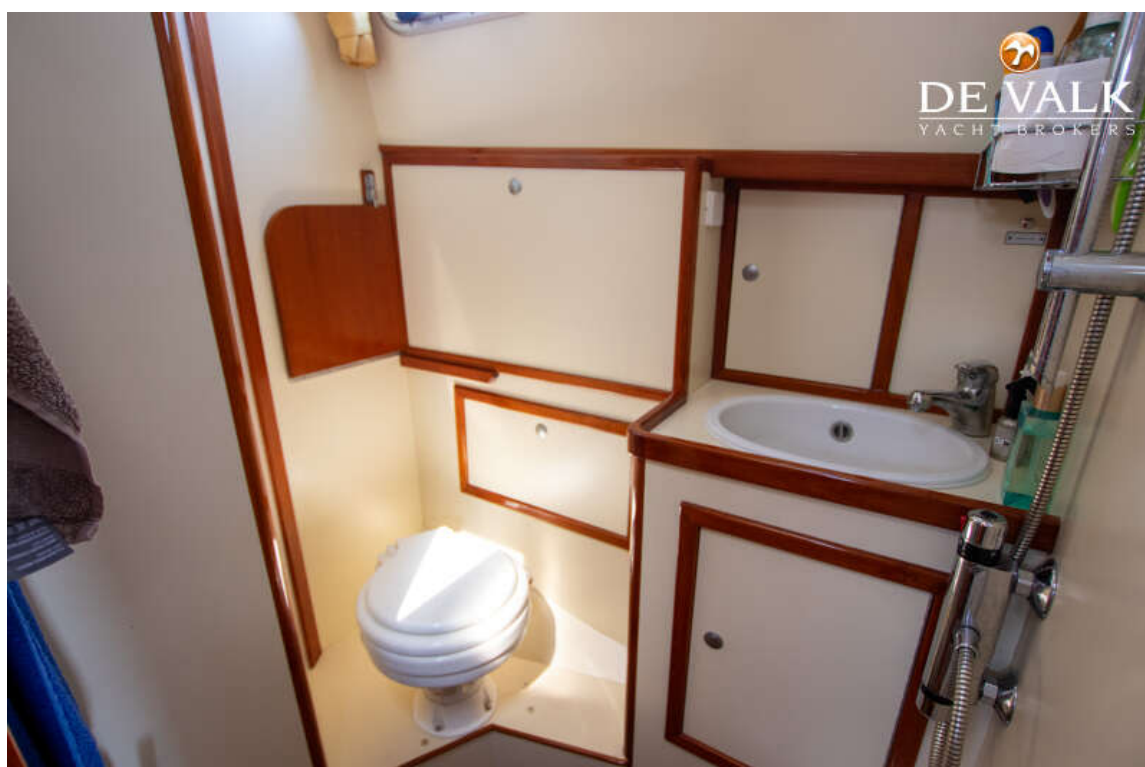




# AQUASTAR 38



# AQUASTAR 38





# AQUASTAR 38



# AQUASTAR 38

