



DE VALK
YACHT BROKERS



KESSLINE MISSION



DE VALK
YACHT BROKERS

BROKER'S COMMENTS

The Kessline Mission is a stylish 14.99-metre motor yacht, built by Van Kessel Yachting in 2008. This yacht combines luxury with performance, thanks to powerful 2 x Volvo Penta D3 engines and a robust steel hull. The interior offers a refined teak finish, three comfortable cabins and modern amenities, including air conditioning and a fully equipped kitchen. Perfect for long trips or short getaways, the Kessline Mission offers everything you need for ultimate comfort on the water

Ian Pols

SPECIFICATIONS

Dimensions	14.99 x 4.70 x 1.05 (m)	Builder	Van Kessel Yachting
Built	2008	Cabins	3
Material	Steel	Berths	6
Engine(s)	2 x Volvo Penta D3 diesel	Hp/Kw	2 x 110.00 (hp), 80.96 (kw)
Asking price	sold (VAT)	Lying	at sales office

CONTACT

Sales office	De Valk Altena	Telephone	+31 162 727211
Address	Keizersveer 3A 4941 TA Raamsdonksveer NL	E-mail	altena@devalk.nl

DISCLAIMER

These particulars are given in good faith as supplied but cannot be guaranteed.



GENERAL

Model	KESSLINE MISSION
Type	motor yacht
LOA (m)	14,99
LWL (m)	13,70
Beam (m)	4,70
Draft (m)	1,05
Air draft (m)	3,05
Headroom (m)	1,95
Year built	2008
Builder	Van Kessel Yachting
Country	The Netherlands
Designer	Van Vossen
Displacement (t)	23
CE norm	B
Hull material	steel
Hull colour	blue
Hull thickness (mm)	5
Hull shape	multi hard chine
Superstructure material	steel
Superstructure (mm)	4
Rubbing strake	stainless steel
Deck material	steel
Deck finish	teak
Cockpit deck finish	teak
Window frame	aluminium
Window material	double glazing Gebo
Portholes	stainless steel
Insulation	rockwool
Radar arch	collapsible
Mast can be lowered	yes



Fuel tank (litre)	steel 2000
Level indicator (fuel tank)	yes
Freshwater tank (litre)	stainless steel 1250
Level indicator (freshwater)	yes
Blackwater tank (litre)	stainless steel 300
Level indicator (blackwater)	yes
Blackwater tank extraction	deck extraction + pump
Wheel steering	hydraulic
Inside helm position	yes
Outside helm position	hydraulic
More info on paintwork	2-components International

ACCOMMODATION

Cabins	3
Berths	6
Interior	teak
Floor	parquet
Open cockpit	yes
Headroom saloon (m)	1,95
Heating	central heating
Air-conditioning	In front
Dinette	yes
Galley	yes
Countertop	corian
Sink	stainless steel
Cooker	ceramic Indesit
Extractor	Dometic
Microwave/oven combi	Etna
Fridge	Candy
Freezer	Candy
Hot water system	220V + engine Boiler



Water pressure system	electrical
Dishwasher	Candy
Owners cabin	French bed
Wardrobe	hanging and drawers
Bathroom	en suite
Toilet	en suite Vetus
Toilet system	electric
Wash basin	in the bathroom Corian worktop
Shower	shared
Guest cabin 1	double bed
Wardrobe	yes
Bathroom	yes
Toilet	en suite Vetus
Toilet system	electric
Wash basin	in the bathroom Corian worktop
Shower	shared
Guest cabin 2	double bed
Wardrobe	yes
Washing machine	Candy
 MACHINERY	
No of engines	2
Make	Volvo Penta
Type	D3
HP	110
kW	80.96
Fuel	diesel
Engine cooling system	freshwater heat exchanger
Drive	shaft
Engine controls	electrical
Bowthruster	electric Side Power 95kgf proportional



Sternthruster	electric Side Power 75kgf proportional
Exhaust	watercooled
Thrust bearing	yes
Propeller type	fixed
Propeller blades	4
Propeller shaft material	stainless steel Python drive
Shaft lubrication	water
Manual bilge pump	1x
Electric bilge pump	4x
Electrical installation	12 V, 230 V
Generator	Kohler 4 kW
Start battery	2x Optima 55 Ah
Service battery	6x gel 200 Amp
Generator battery	yes
Bowthruster battery	yes
Battery charger/inverter	2x Victron Phoenix multiplus 12V/3000VA/120A
Shorepower	with cable
Insulation transformer	Victron 3600W

NAVIGATION

Compass	Raymarine i70s
Depth sounder	Raymarine i70s
Log	Raymarine i70s
Repeater	Autopilot
VHF	Cobra Marine
Autopilot	Raymarine p70Rs
Rudder angle indicator	Raymarine i70s
Radar/plotter	Raymarine Axiom 12 + Quantum plotter
Personal computer	yes
PC connection	yes
Wifi antenna	Met vaste router



Camera	Boeg & achterschip
Searchlight	2x
Extra info	Holland Nautic control lever
Extra info	SMS systeem voor accu's, bilgewater & temperatuur

EQUIPMENT

Bimini	yes
Cockpit cushions	Suede
Cockpit table	Teak
Cockpit chairs	Teak
Bathing platform	Teak
Boarding ladder	Stainless steel
Transom door	yes
Anchor	yes
Anchor chain	yes
Windlass	electrical
Deck wash	yes
Dinghy	Nimarine (nieuw, nooit gebruikt)
Outboard	Suzuki (nieuw, nooit gebruikt)
Davits	stainless steel
Davits controls	electrical
Sea railing	stainless steel
Grab rail (superstructure)	stainless steel
Railing side opening gates	SB & BB
Wiper	3x
Horn	yes
Fenders	yes
Mooring lines	yes
TV	yes
TV receiver	yes
Radio-cd player	Kenwood



Speakers in salon	4x Kenwood
Fire extinguisher	yes
Extinguisher in engine room	yes
Auto extinguisher system	yes
Extra info	Vouwfiets
Extra info	Duikuitrusting (5 liter fles)



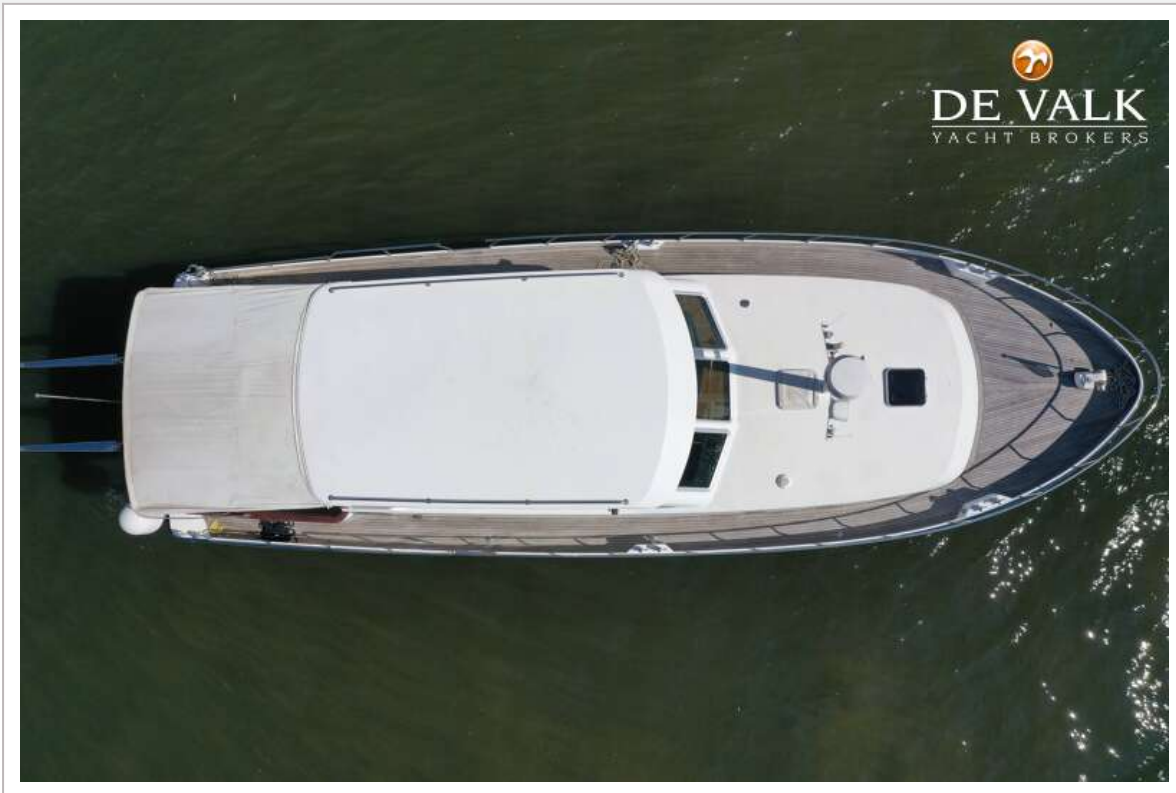
KESSLINE MISSION



KESSLINE MISSION



KESSLINE MISSION



KESSLINE MISSION



KESSLINE MISSION



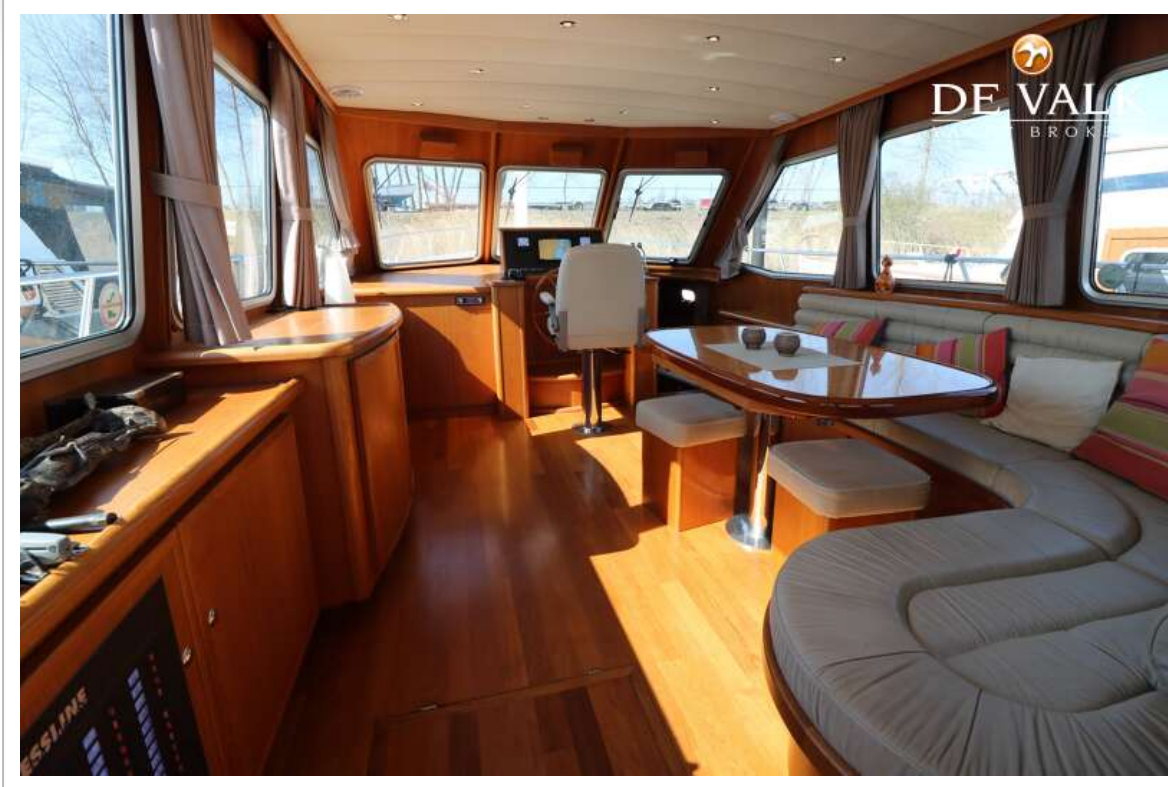
KESSLINE MISSION



KESSLINE MISSION



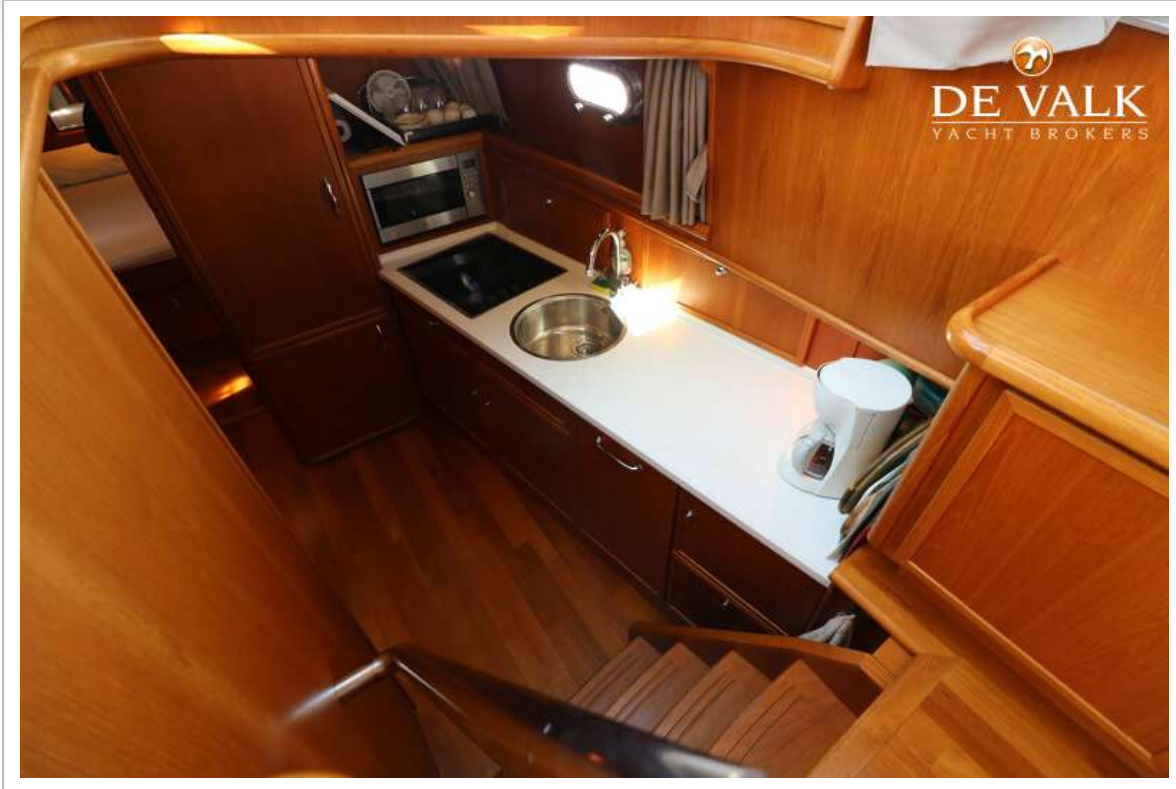
KESSLINE MISSION



KESSLINE MISSION



KESSLINE MISSION



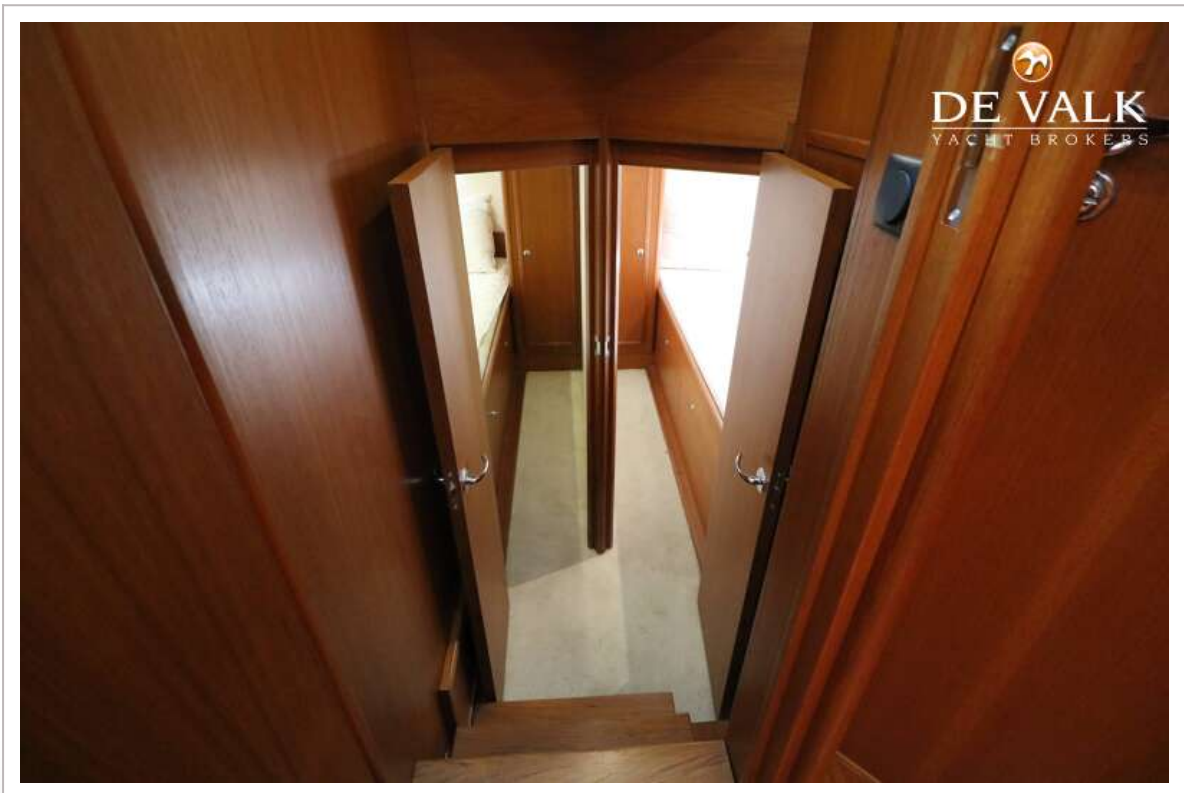
KESSLINE MISSION



KESSLINE MISSION



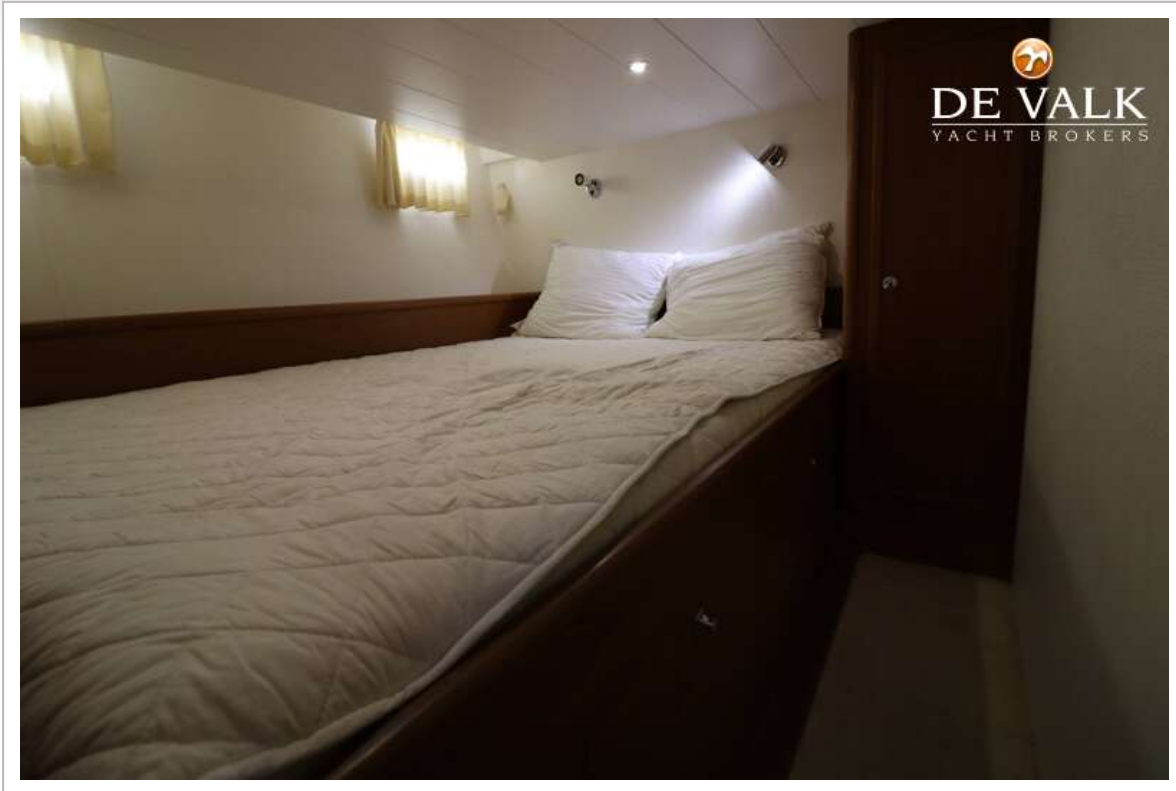
KESSLINE MISSION



KESSLINE MISSION



KESSLINE MISSION



KESSLINE MISSION



KESSLINE MISSION

