



DE VALK  
YACHT BROKERS



## KOK ARIDE 1500



DE VALK  
YACHT BROKERS

# KOK ARIDE 1500

## BROKER'S COMMENTS

Aride 1500 built at Scheeps en Jachtwerf Jan Kok and offered by her first owner. A yacht with a number of special features such as a very low bridge height, shallow draught, very quiet thanks to excellent engine room insulation, solid and heavy construction resulting in very pleasant sailing characteristics. The ideal travelling companion if you want to sail through Europe or just visit the Baltic Sea, anything is possible. "Avontuur III" is moored in our covered sales marina in Sneek, where we kindly invite you for a viewing.

*Henk Jan Vissia*

## SPECIFICATIONS

<b>Dimensions</b>	14.74 x 4.40 x 1.20 (m)	<b>Builder</b>	Jan Kok Leimuiden
<b>Built</b>	2011	<b>Cabins</b>	2
<b>Material</b>	Steel	<b>Berths</b>	5
<b>Engine(s)</b>	2 x Perkins M225Ti diesel	<b>Hp/Kw</b>	2 x 165.00 (hp), 121.44 (kw)
<b>Asking price</b>	€ 345.000 (VAT Paid)	<b>Lying</b>	at sales office

## CONTACT

<b>Sales office</b>	De Valk Sneek	<b>Telephone</b>	+31 (0)515 42 80 30
<b>Address</b>	Zwolsmanweg 7 8606 KC Sneek NL	<b>E-mail</b>	sneek@devalk.nl

## DISCLAIMER

These particulars are given in good faith as supplied but cannot be guaranteed.



## GENERAL

Model	KOK ARIDE 1500
Type	motor yacht
LOA (m)	14,74
LWL (m)	13,90
Beam (m)	4,40
Draft (m)	1,20
Air draft (m)	7,00
Air draft min (m)	2,45
Headroom (m)	2,00
Year built	2011
Builder	Jan Kok Leimuiden
Country	The Netherlands
Designer	John Jansen
Displacement (t)	28,7
CE norm	B
Hull material	steel
Hull colour	blue
Hull thickness (mm)	5 mm
Hull shape	round-bilged
Keel type	long keel
Bilge keels	yes
Superstructure material	steel
Deck plate thickness (mm)	4 mm
Rubbing strake	rubber
Deck material	steel 5 mm
Deck finish	teak Build with 18 mm masive teak
Superstructure deck finish	teak
Cockpit deck finish	teak
Dorades	yes
Window frame	aluminium



Window material	double glazing	Hora
Deckhatch	yes	
Portholes	aluminium	
Insulation	rockwool	
Mast can be lowered	hydraulic	
Fuel tank (litre)	steel	2x 1150 Ltr 2300 total
Level indicator (fuel tank)	yes	
Freshwater tank (litre)	1200 Ltr	
Level indicator (freshwater)	yes	
Blackwater tank (litre)	350 Ltr	
Blackwater tank extraction	deck extraction + pump	
Wheel steering	powersteer	
Inside helm position	yes	
Outside helm position	with remote control	
More info on hull	The starting points for the construction of the Arida 1500 were a round bilge, flaired bow, low superstructure, shallow draft and a classically heavy construction that you hardly encounter nowadays.	
More info on paintwork	underlayer with epoxy toplayer 2 component Doublecoat from van den IJssel fully repainted 2022	

## ACCOMMODATION

Cabins	2
Berths	5
Interior	teak
Floor	teak and holly
Open cockpit	yes
Deck saloon	yes
Headroom saloon (m)	2.00 m.
Sliding roof	manual
Heating	central heating Kabola HR400
Opening door to cockpit	with muscuto net 2x Teak



# KOK ARIDE 1 500

Galley	on starbord site in the saloon
Countertop	corian
Sink	stainless steel Double sink
Cooker	induction Miele 4 burner
Oven	Miele steamoven
Extractor	ltho
Fridge	in the kitchen Miele
Freezer	in the bathroom Weaco Freeser
Hot water system	on central heating
Water pressure system	electrical Electronic double pump
Dishwasher	Miele G4570 SCVi
Owners cabin	v-bed
Bed length (m)	2.20 x 0.95 m (total with 2,83)
Wardrobe	hanging/drawers/shelves
Bathroom	shared
Toilet	shared
Toilet system	electric Planus
Wash basin	in the bathroom Corian
Shower	shared
Guest cabin 1	bunk bed
Bed length (m)	Upper bed 2.14 x 0.80 m. lower bed 2.20 x 0.70 m
Wardrobe	shelves
Bathroom	shared
Washing machine/dryer combi	wasch and dryer Miele Softcare WT2780
Extra info	Huge ammount of storage space under the cockpit.
Extra info	two front windows (the center window has a clear view window) and all aft windows can be opened.

## MACHINERY

No of engines	2
Make	Perkins



Type	M225Ti
HP	165
kW	121.44
Fuel	diesel
Year installed	2011
Maximum speed (kn)	10
Cruising speed (kn)	7
Engine hours	2824
Engine cooling system	freshwater heat exchanger
Drive	shaft
Shaft seal	yes
Engine controls	electrical Navico 752 and Navico 262 at the helm
Gearbox	hydraulic
Bowthruster	hydraulic Hydrosta Maxprop 225
Exhaust	watercooled
Thrust bearing	Scatra
Propeller type	fixed
Propeller blades	4
Propeller shaft material	stainless steel 50 mm
Shaft lubrication	water
Electric bilge pump	3x
Bilge alarm	yes
Electrical installation	12/24/220V
Generator	silent separator Westerbeke 7,5 Kw
Running hours generator	497,7 hours
Batteries	yes
Start battery	2x
Service battery	8x 200Ah Gel
Generator battery	Redtop
Battery monitor	Victron BMV 600S
Battery charger	2x Victron 24/8 1x Victron 12/7
Battery charger/inverter	with Victron Digital Multicontrol Victron Quatro 24/5000/120



Diode battery combiners	yes
Shorepower	with cable
Insulation transformer	Victron 3600
Extra info	on each engine a hydraulic powerpump, ropecutters on both shafts
Extra info	very well isolated engineroom at low rpm only 54 dB(A), a maximum RPM only 66 dB(A), as experts say very quit
Extra info	The yacht has the looks of a professional build craft.

## NAVIGATION

Electric compass	yes
Multi control display	Navico 301
VHF	2x Simrad RS 32
Autopilot	with Navico 165 Joystick Navico
Rudder angle indicator	Navico
Radar	Simrad
Radar/GPS/plotter	Simrad NSE 12
AIS transceiver	Navico Nais 300
Camera	Rearview Camera
Navigation lights	yes

## EQUIPMENT

Cockpit cover	yes
Window cover	yes
Cockpit cushions	yes
Cockpit table	yes
Bathing platform	yes
Boarding ladder	yes
Anchor	Pool 32 Kg
Anchor chain	50 m. 10 mm
Anchor chain	yes



Windlass	electrical Lofrans 24V 1500 W
Deck wash	Pedrello MPU pomp 220V
Sea railing	stainless steel
Grab rail (superstructure)	yes
Railing side opening gates	2x
Wiper	yes
Clearview window	Brusch 7x7x14
Window ventilator	yes
Horn	electric
Horn cover	yes
Fenders	yes
Mooring lines	yes
Spare parts	yes
Tools	yes
TV	yes
Radio-cd player	JVC KD-R621
Speakers in salon	yes
Clock - barometer	3x Wempe
Extinguisher in engine room	yes
Extra info	on both sides of the bathing platform lazy stairs to enter the side decks.
Extra info	On the aft deck, there is a high bench seat with a Navico remote control for the engines, bow thruster, steering and sailing information.







# KOK ARIDE 1500

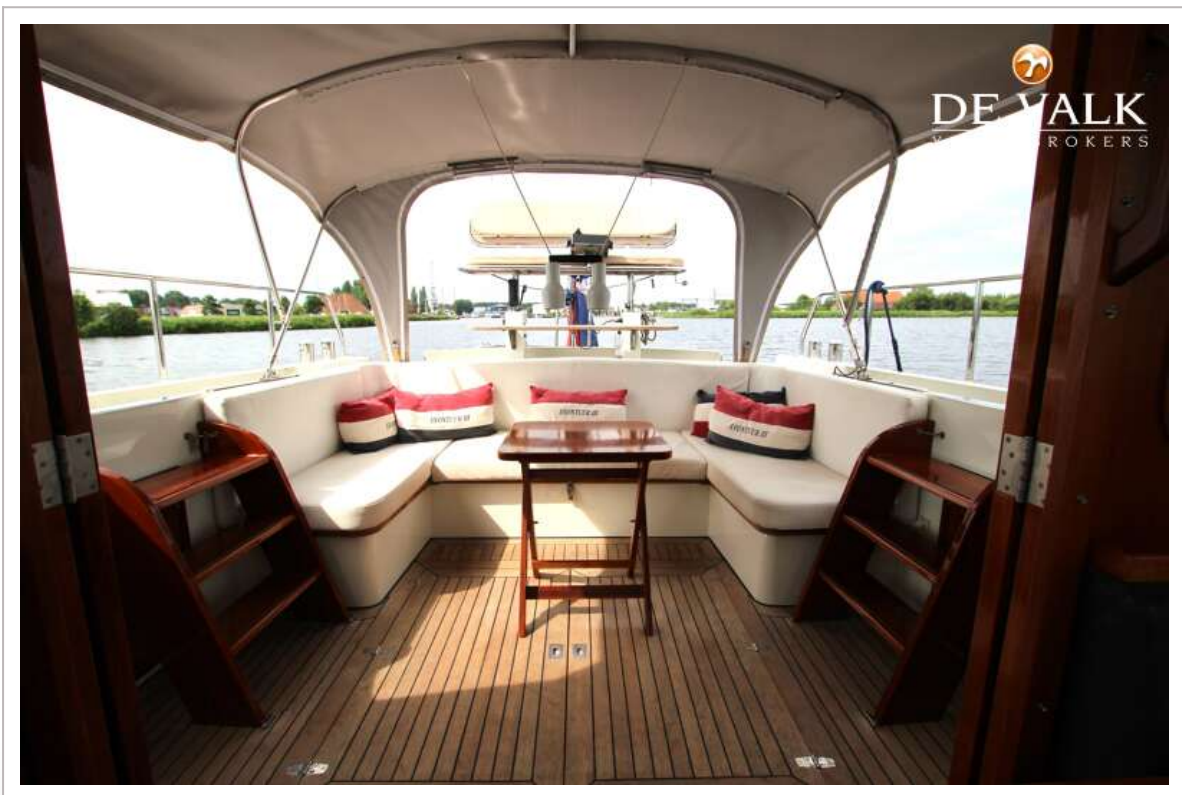


# KOK ARIDE 1500





# KOK ARIDE 1500



# KOK ARIDE 1500





# KOK ARIDE 1500



# KOK ARIDE 1500





# KOK ARIDE 1500





# KOK ARIDE 1500

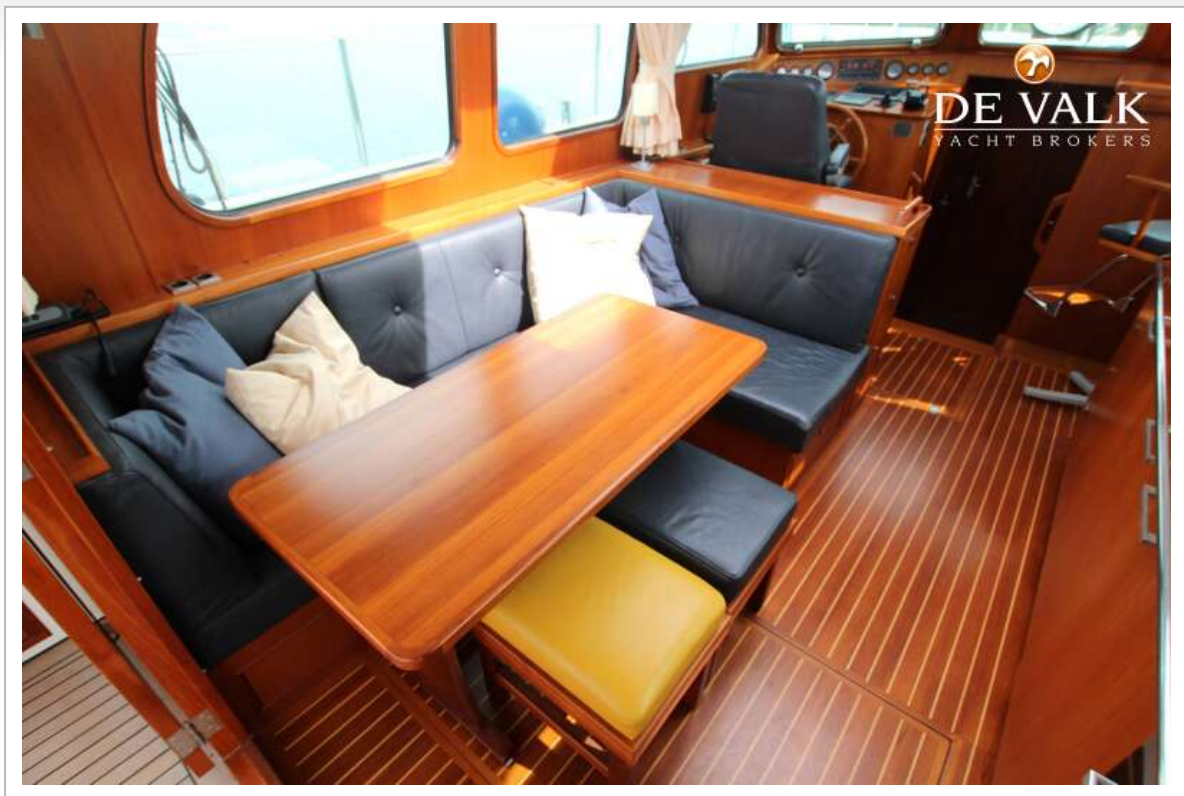


# KOK ARIDE 1500





# KOK ARIDE 1500

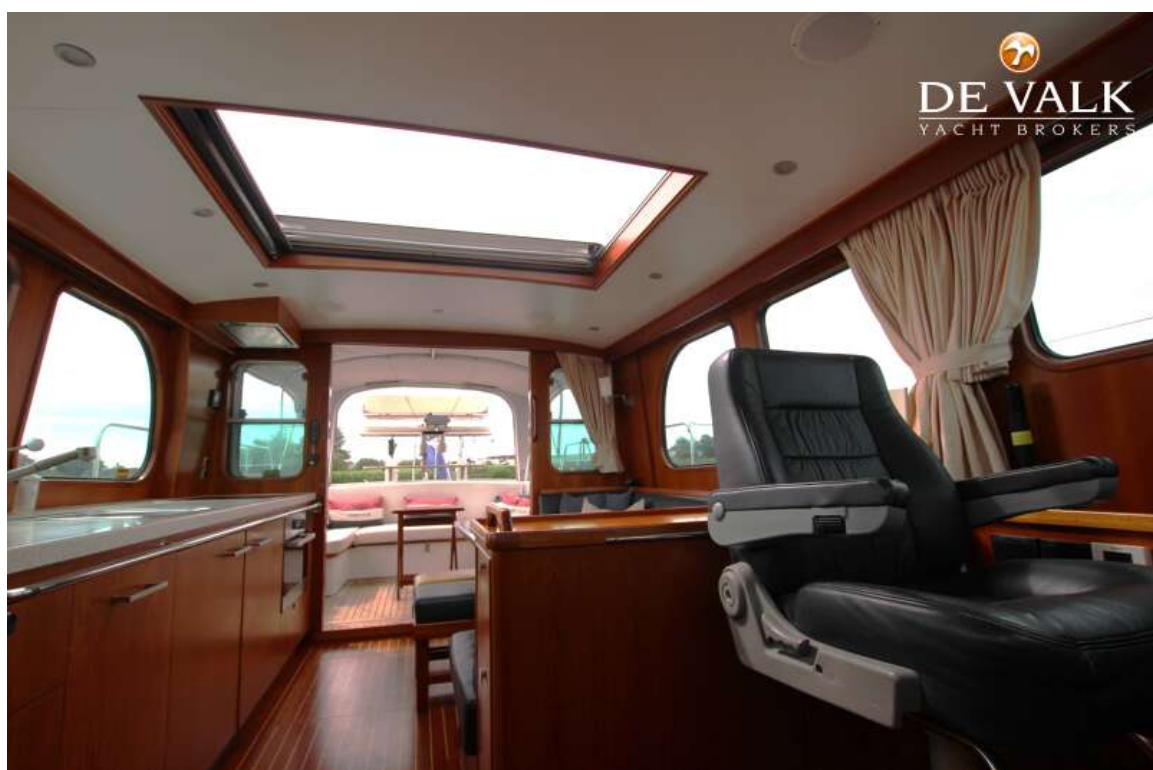


# KOK ARIDE 1500

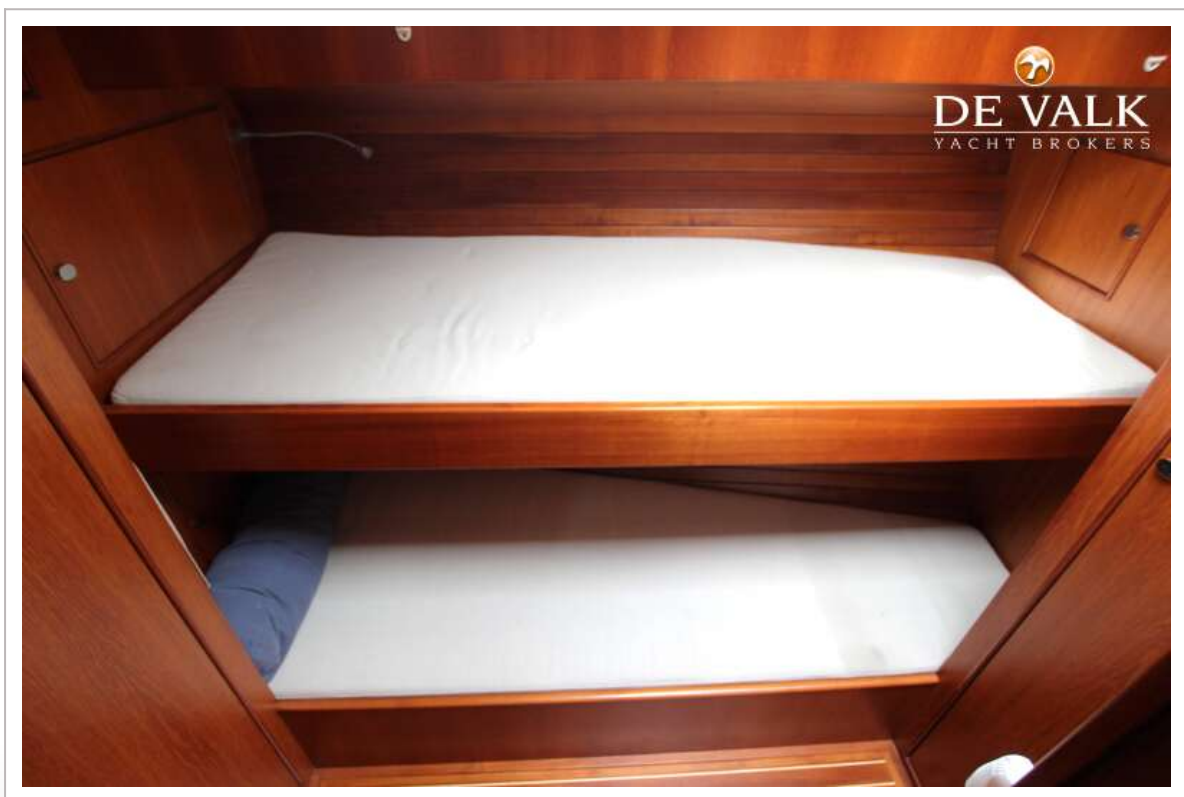




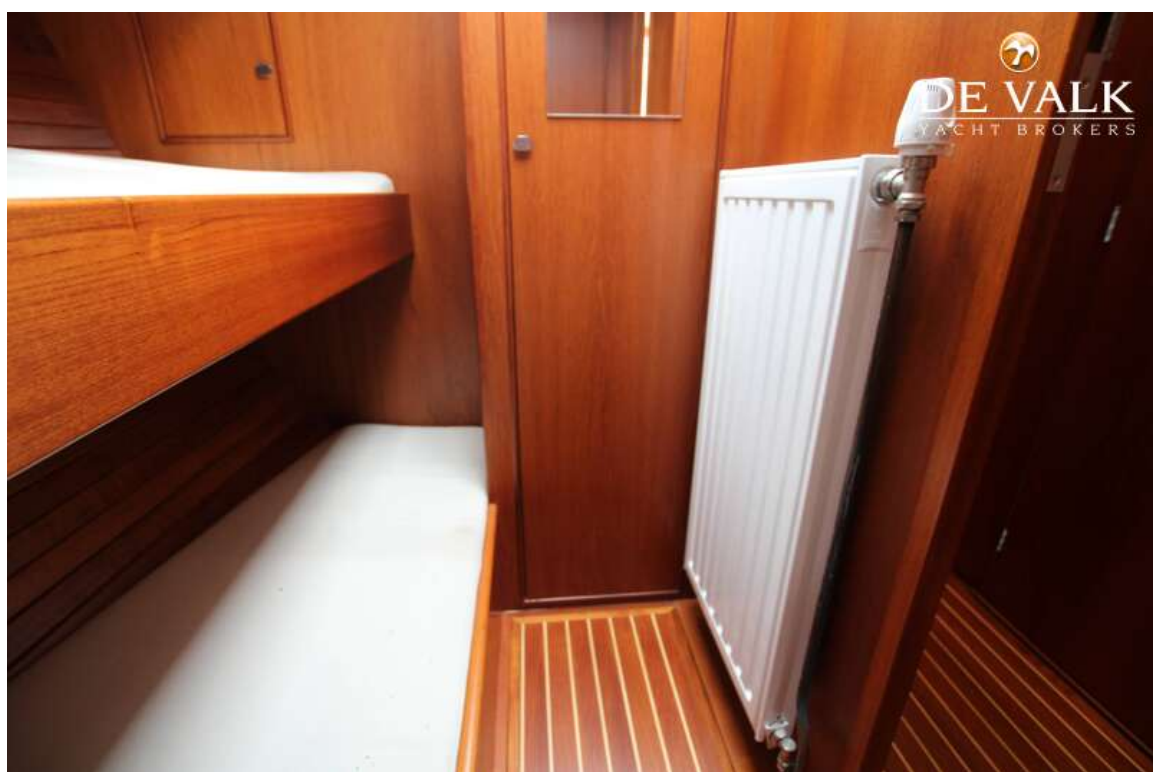
# KOK ARIDE 1500



# KOK ARIDE 1500



## KOK ARIDE 1500

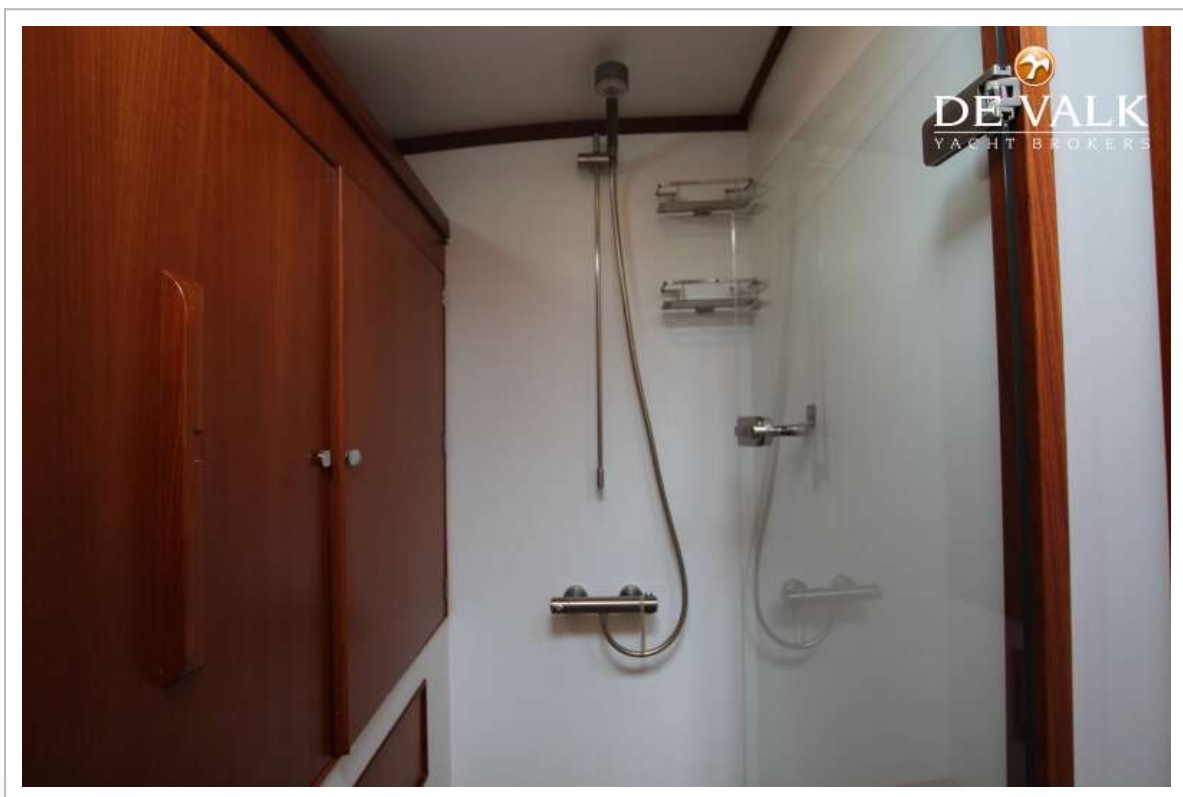


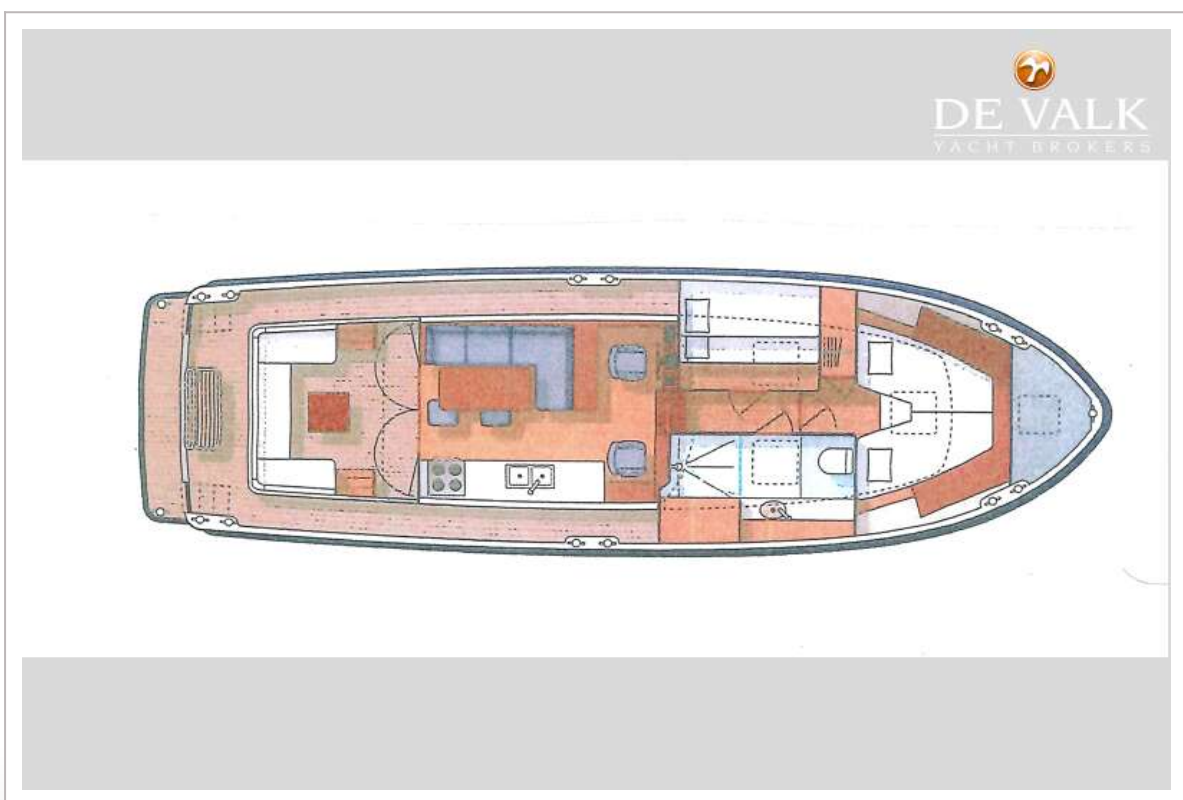






# KOK ARIDE 1500





# KOK ARIDE 1500

