



BAVARIA 27 SPORT

BROKER'S COMMENTS

This Bavaria 27 Sport, which we offer on behalf of the first owners, including complete service history, is a space wonder in its own right. The cockpit has a cosy round seat, a wetbar and a large sun bed. Downstairs in the cabin is a spacious double bed, a dinette that can be converted and a spacious wet room with shower. This Bavaria 27 Sport is powered by a Volvo Penta 5.7L 320hp petrol inboard engine. You are welcome 7 days a week to view this beauty in our sales marina in Loosdrecht.

Julian de Heer

SPECIFICATIONS

Dimensions	8.95 x 2.98 x 0.90 (m)	Builder	Bavaria Yachts
Built	2008	Cabins	
Material	GRP	Berths	4
Engine(s)	1 x Volvo Penta 5.7 GXI-DPS petrol	Hp/Kw	320.00 (hp), 235.52 (kw)
Asking price	sold (VAT)	Lying	at sales office

CONTACT

Sales office	De Valk Loosdrecht B.V.	Telephone	+31 (0)35 582 90 30
Address	't Breukeleveense Meentje 6 1231LM Loosdrecht / Wijdmeren NL	E-mail	loosdrecht@devalk.nl

DISCLAIMER

These particulars are given in good faith as supplied but cannot be guaranteed.



GENERAL

Model	BAVARIA 27 SPORT
Type	motor yacht
LOA (m)	8,95
Beam (m)	2,98
Draft (m)	0,90
Year built	2008
Builder	Bavaria Yachts
Country	Germany
Hull material	GRP
Hull colour	white
Hull shape	V-shaped hull
Superstructure material	GRP
Rubbing strake	stainless steel
Deck material	GRP
Deck finish	teak
Superstructure deck finish	non-skid moulded in
Cockpit deck finish	teak
Antifouling (year)	2022-2023
Window frame	stainless steel
Window material	tempered glass
Radar arch	non collapsible
Fuel tank (litre)	stainless steel 520
Level indicator (fuel tank)	yes
Freshwater tank (litre)	polyethylene 110
Blackwater tank (litre)	polyethylene 75
Wheel steering	mechanical
Outside helm position	mechanical

ACCOMMODATION

Berths	4
--------	---



BAVARIA 27 SPORT

Interior	teak
Floor	teak and holly
Heating	diesel ducted hot air Eberspächer
Dinette to convert into berth	yes
Sliding door to cockpit	yes
Galley	yes
Countertop	corian
Sink	stainless steel
Cooker	methylated spirit + 220 V
Fridge	2x Waeco
Hot water system	220V + engine
Water pressure system	electrical
Wardrobe	hanging and shelves
Bathroom	shared
Toilet	shared
Toilet system	manual
Wash basin	in the bathroom
Shower	shared

MACHINERY

No of engines	1
Make	Volvo Penta
Type	5.7 GXI-DPS
HP	320
kW	235.52
Fuel	petrol
Maximum speed (kn)	35
Engine hours	1142
Engine cooling system	seawater
Drive	Z-drive
Engine controls	bowden cable



Bowthruster	electric Side power
Exhaust	watercooled
Propeller type	fixed Duo Prop
Start battery	yes
Service battery	yes
Bowthruster battery	2024
Battery charger	yes
Inverter	1000W
Shorepower	with cable
Trimtabs	Volvo Penta
Extra info	Complete service history since 2008

NAVIGATION

Compass	yes
Navigation lights	yes

EQUIPMENT

Fixed windscreen	yes
Sprayhood	yes
Cockpit cover	Windows renewed 2023
Cockpit cushions	yes
Cockpit table	yes
Bathing platform	yes
Boarding ladder	stainless steel
Transom door	yes
Deck shower	yes
Anchor	yes
Anchor chain	yes
Windlass	electrical
Sea railing	stainless steel
Wiper	yes



BAVARIA 27 SPORT

Horn	yes
Fenders	yes
Mooring lines	yes
TV	yes
Radio	yes
Cockpit speakers	yes
Speakers in salon	yes



BAVARIA 27 SPORT



BAVARIA 27 SPORT



BAVARIA 27 SPORT



BAVARIA 27 SPORT



BAVARIA 27 SPORT



BAVARIA 27 SPORT



BAVARIA 27 SPORT



BAVARIA 27 SPORT



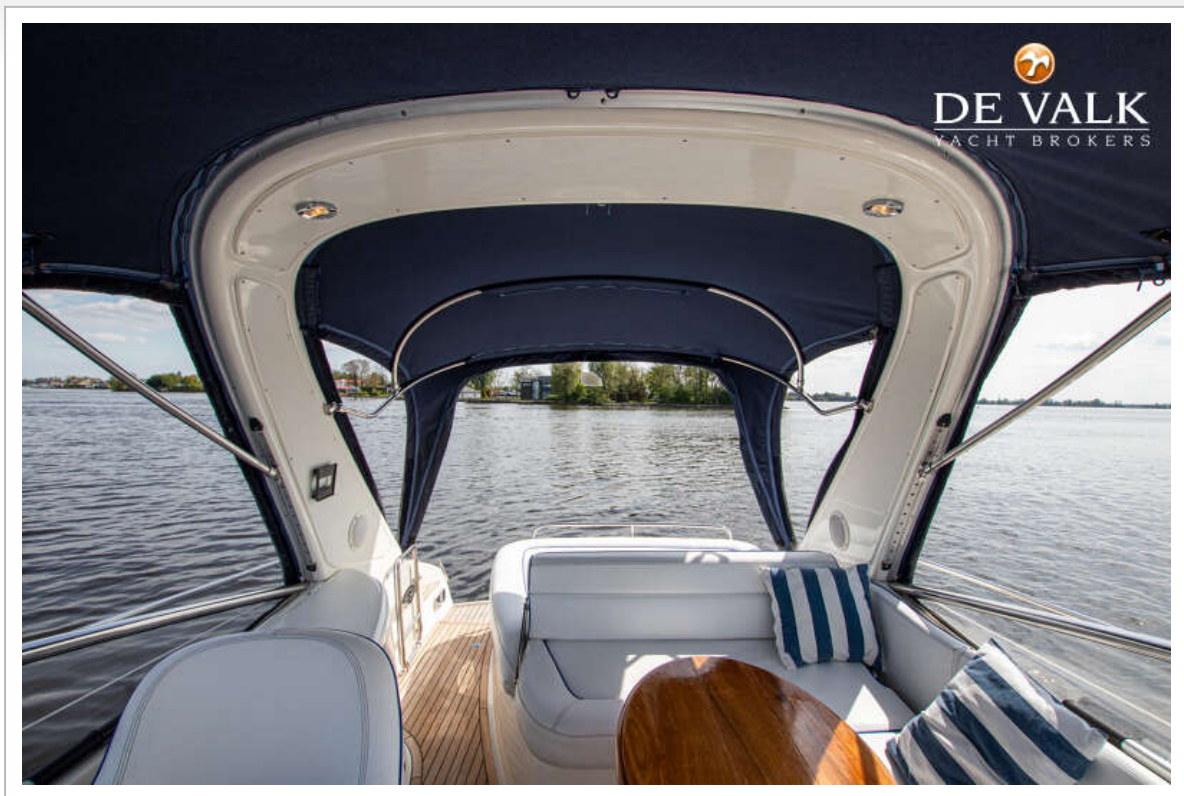
BAVARIA 27 SPORT



BAVARIA 27 SPORT



BAVARIA 27 SPORT



BAVARIA 27 SPORT



BAVARIA 27 SPORT



BAVARIA 27 SPORT



BAVARIA 27 SPORT



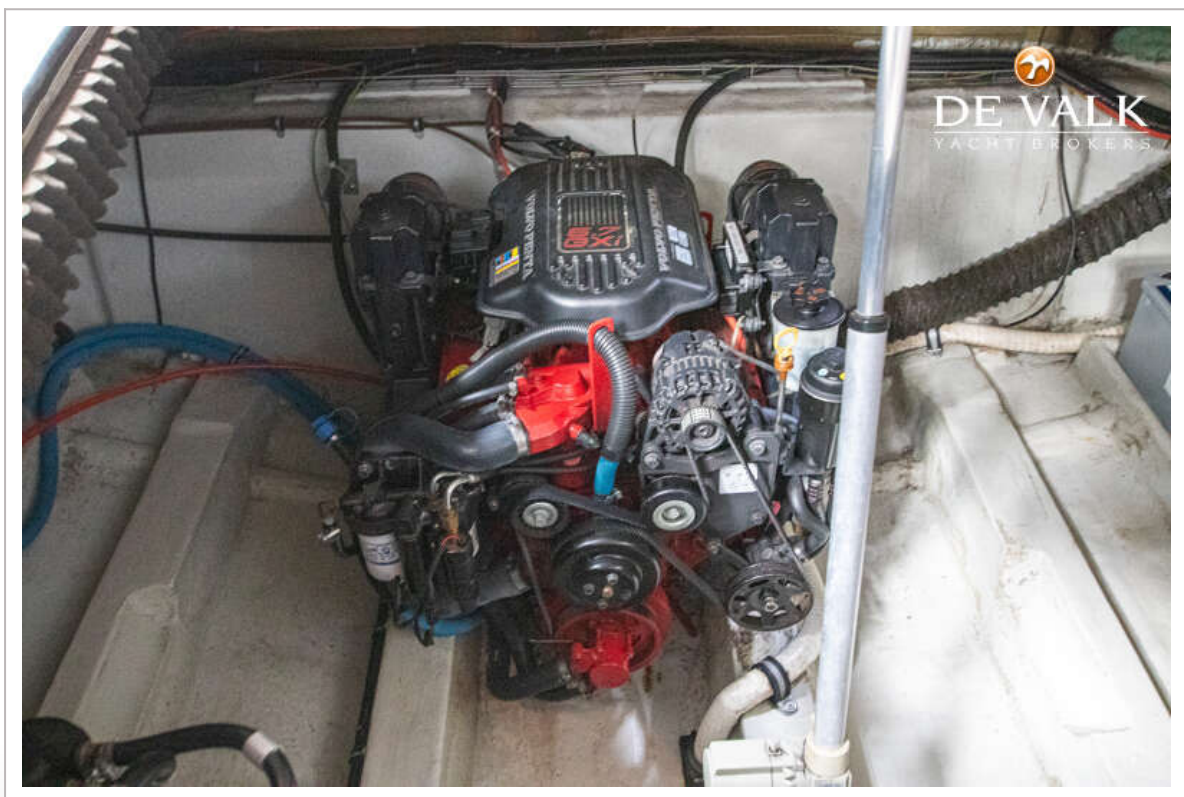
BAVARIA 27 SPORT



BAVARIA 27 SPORT



BAVARIA 27 SPORT



BAVARIA 27 SPORT

