



DE VALK
YACHT BROKERS



PROUT 39 ESCALE



DE VALK
YACHT BROKERS

BROKERAGE | CHARTER | BERTHS | FINANCE | INSURANCE | YACHT MANAGEMENT

PROUT 39 ESCALE

BROKER'S COMMENTS

An opportunity to buy a comfortable and spacious catamaran good for ocean passages, with nice interior in cherry. Very nice inside. Lots of upgrades, including new engines. One nice double cabin in each stern. Shower/toilet and a single cabin in respectiv fore. Large cockpit with sofa, helm and table. Integral water tanks in the keels provide a double skin; buoyancy compartments fore and aft, combined with the sandwich construction and wood furniture, help make the Escale unsinkable. "The Prouts are very well built," confirms Multihulls Chiodi. "The quality of manufacture is superb."

Per Engdahl

SPECIFICATIONS

Dimensions	11.90 x 5.60 x 0.98 (m)	Builder	Prout Catamarans
Built	1996	Cabins	3
Material	GRP	Berths	6
Engine(s)	2 x Volvo Penta D1-30 diesel	Hp/Kw	2 x 60.00 (hp), 44.16 (kw)
Asking price	sold (VAT)	Lying	

CONTACT

Sales office	De Valk Sweden	Telephone	+46 72 358 50 74
Address	385 98 Bergkvara SE	E-mail	sweden@devalk.nl

DISCLAIMER

These particulars are given in good faith as supplied but cannot be guaranteed.



PROUT 39 ESCALE

GENERAL

Model	PROUT 39 ESCALE
Type	catamaran sailing yacht
LOA (m)	11,90
LWL (m)	10,37
Beam (m)	5,60
Draft (m)	0,98
Air draft (m)	18,50
Headroom (m)	2,08
Year built	1996
Builder	Prout Catamarans
Country	United Kingdom
Designer	Feltham/Underwood/Prout
Displacement (t)	6,3
CE norm	A
Hull material	GRP
Hull colour	White
Hull shape	Katamaran
Deck material	GRP sandwich kevlar reinforced
Antifouling (year)	05 2023
Window material	Acrylic 10 mm new 2018
Deckhatch	yes
Fuel tank (litre)	Stainless steel 160 litre
Level indicator (fuel tank)	Gauge
Freshwater tank (litre)	Grp 2 * 350 litre
Level indicator (freshwater)	Gauge
Blackwater tank (litre)	Stainless steel 150 litre
Level indicator (blackwater)	Gobius pro
Blackwater tank extraction	On deck and bottom.
Wheel steering	Hydraulic
Outside helm position	yes



PROUT 39 ESCALE

Emergency tiller	yes
------------------	-----

ACCOMMODATION

Cabins	3
Berths	6
Interior	Sherry, very good condition.
Headroom saloon (m)	2,08
Heating 2	Alde 220 v 2 kw water Radiators in all compartments
Navigation center	yes
Chart table	yes
Convertible berth	Whole sofa in salon converts to a giant berth
Galley	yes
Countertop	yes
Sink	Triple sink grp
Cooker	Gas, 3 burner
Oven	Gas
Fridge	65 litre 2016
Freezer	Cooler / Freezer (2020) 170 litres, Isotherm 2017 K
Hot water system	2015, 30 litre 220v / engine
Water pressure system	yes
Toilet	Toilet (last service 08 / 2023) Jabsco Deluxe
Toilet system	Toilet system (2016) freshwater / electric with maserator
Wash basin	yes
Shower	In the bathroom

MACHINERY

No of engines	2
Make	Volvo Penta
Type	D1-30
HP	60
kW	44.16



PROUT 39 ESCALE

Fuel	diesel
Year installed	2014
Maximum speed (kn)	8
Cruising speed (kn)	6,5
Engine hours	560
Engine cooling system	Freshwater heat exchanger
Drive	sail-drive
Saildrive seal	Last change of saildrive diaphragm 04 / 2022
Propeller type	Fixed, 3 blades
Batteries	yes
Start battery	Start batteries (2021) 2 x Tudor 80 Ah, lead
Service battery	Service battery (2023) 3 x Tudor 80 Ah, lead
Windlass battery	Windlass battery (2015) Varta 75 Ah, lead
Battery monitor	Ctek 2019
Battery charger	Charging system (2019) Ctek offroad, max 300Ah
Solar panel	Solar panels for service batteries (2019) 2 x 150
Shorepower	Shore power (2017) 20 m cable with CEE-plug 16A
Insulation transformer	Isolation transformer (2017) Victron 2 kW
Extra info	Solar panels for windlass battery (2015) 2 x 40 W

NAVIGATION

Compass	yes
Depth sounder	Autohelm St 50
Log	Autohelm St 50
Windset	Autohelm St 50
Repeater	2 at navstation Autohelm St 50
VHF	Navico RT 6500
Autopilot	Autopilot Autohelm ST 7000 type 2
Radar	Radar Autohelm ST 50
GPS	2014 Raymarine E7
AIS transceiver	AIS (2014) Garmin AIS 300



Navigation lights

Navigation lights yes Masthead tricolor yes

EQUIPMENT

Sprayhood

2021

Cockpit cover

Cockpit chapel (2021) yes

Cockpit table

yes

Cockpit chairs

yes

Boarding ladder

yes

Anchor

Cqr 15 kg

Anchor chain

2016, 50 m 10 mm galvanized

Windlass

2016 Lewmar V2 Electric

Dinghy

70c, Alu

Outboard

2014, Mercury 5 hp

Davits

Simpson 200

Davits controls

Davits serviced (2020) yes, new blocks + dyneema

Life raft (pers)

Liferaft (2014) SeGo Offshore, 6 person, valise

Lifejackets

6

Safety harness

yes

Lifebuoy

2022 Baltic

Safety lines on deck

2022

Horn

Yes

Radar reflector

Yes

Fenders

12 cylinder and 4 round

Mooring lines

yes

Radio-cd player

Radio-music player (2017) Alpine UTE-92BT

Speakers in salon

Hertz

Fire extinguisher

2, 2014, 2022

RIGGING

Rigging

yes

Standing rigging

All stays changed (2018) yes, 15 stays



PROUT 39 ESCALE

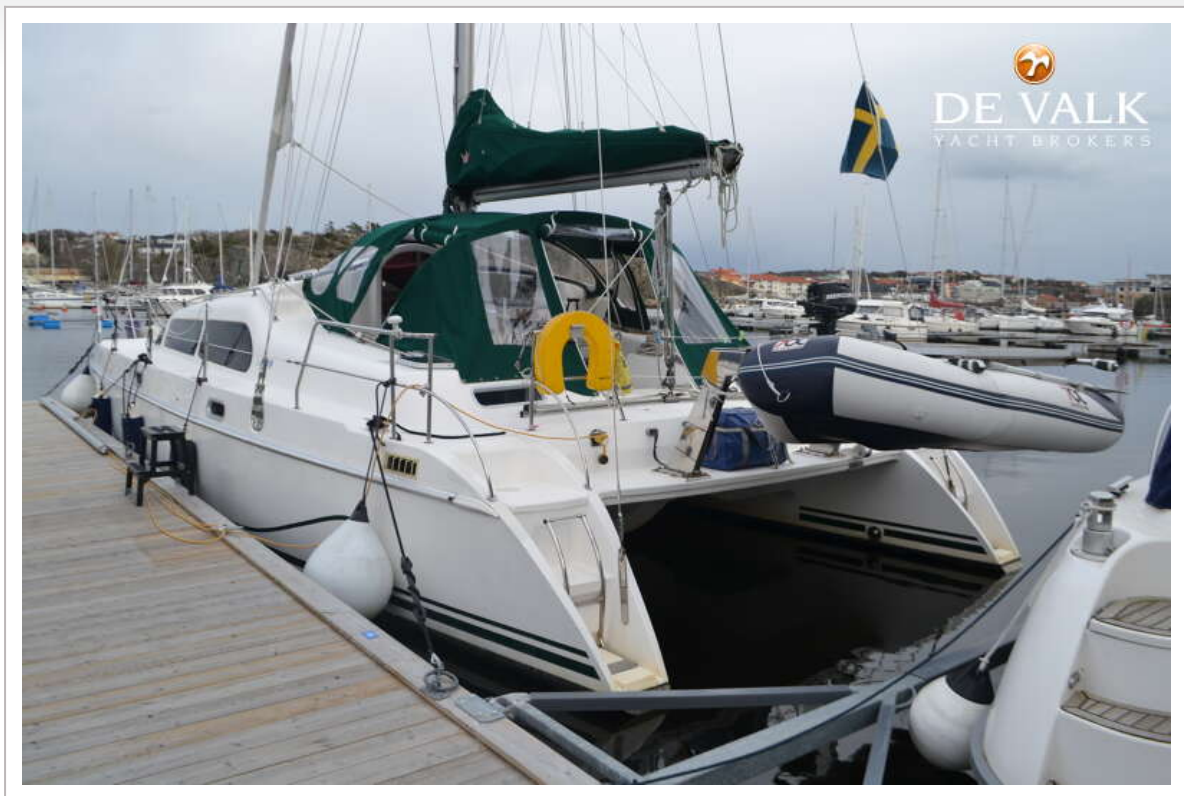
Brand mast	ZSpars
Material mast	Aluminium
Spreaders	yes
Mainsail	Mainsail (2020) Elvström, premium dacron 410/360g, 3 reefs
Mainsail cover	Lazy bag (2020) Elvström, Sunbrella+
Main staysail	Staysail Jekylls
Genoa	Furling genoa (2020) Elvström, dacron 360g
Genoa furler	yes
Genoa cover	yes
Spinnaker	Jekylls
Stormjib	Jekylls
Reefing System	yes
Boomvang	yes
Primary sheet winch	2 Lewmar 50
Halyard winches	Lewmar 16
Spi-pole	Aluminium
Isolated backstay	yes
Extra info	Foldable maststeps



PROUT 39 ESCALE



PROUT 39 ESCALE



PROUT 39 ESCALE



PROUT 39 ESCALE



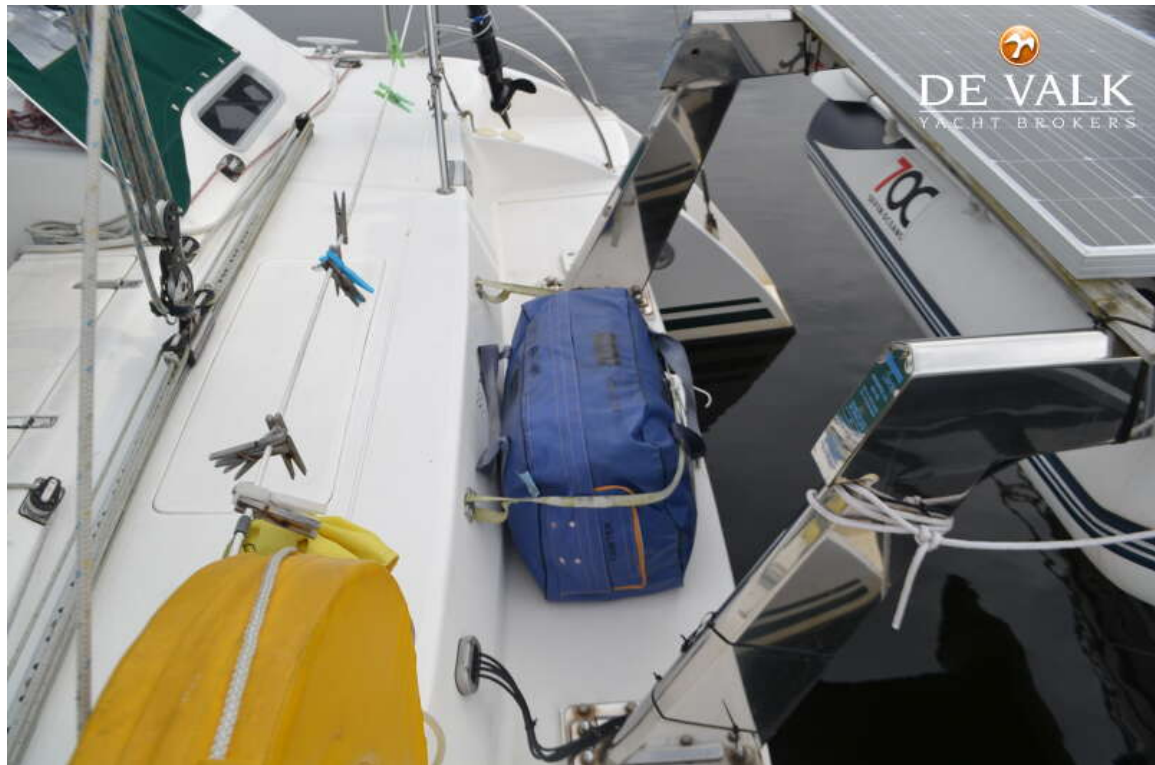
PROUT 39 ESCALE



PROUT 39 ESCALE



PROUT 39 ESCALE



PROUT 39 ESCALE



PROUT 39 ESCALE



PROUT 39 ESCALE



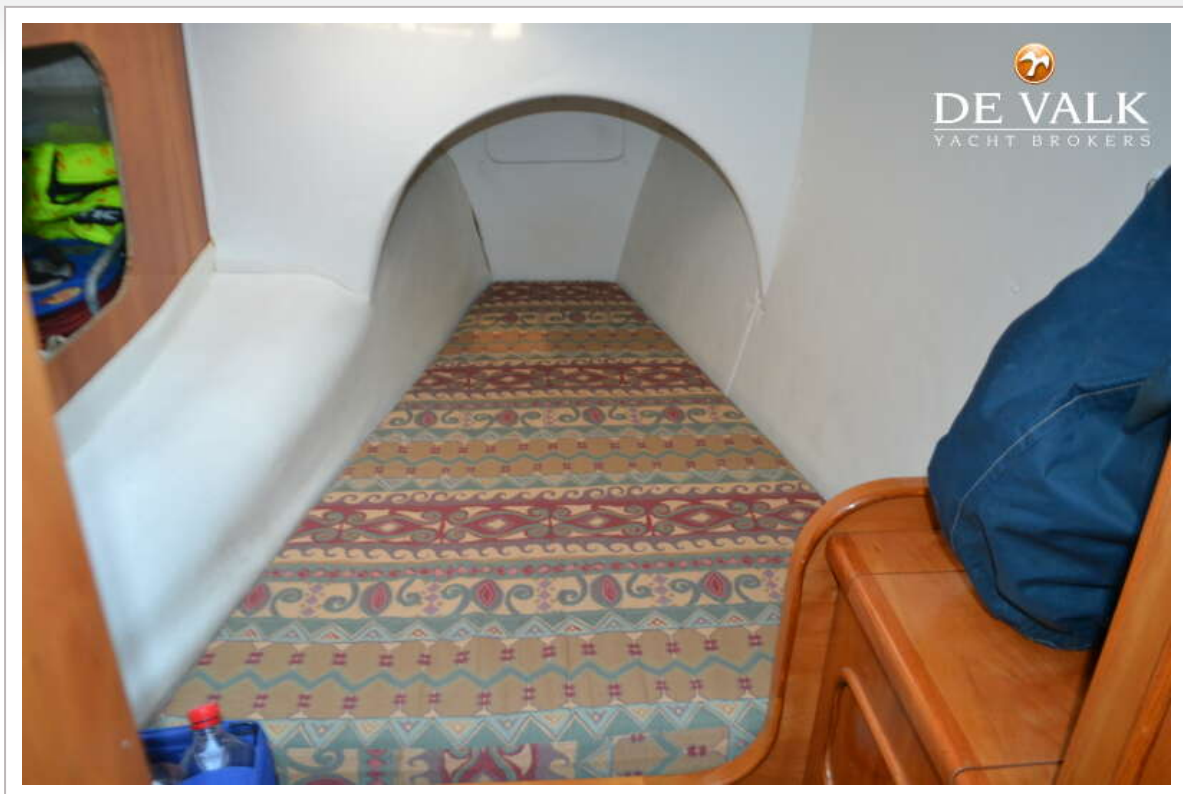
PROUT 39 ESCALE



PROUT 39 ESCALE



PROUT 39 ESCALE



PROUT 39 ESCALE



PROUT 39 ESCALE



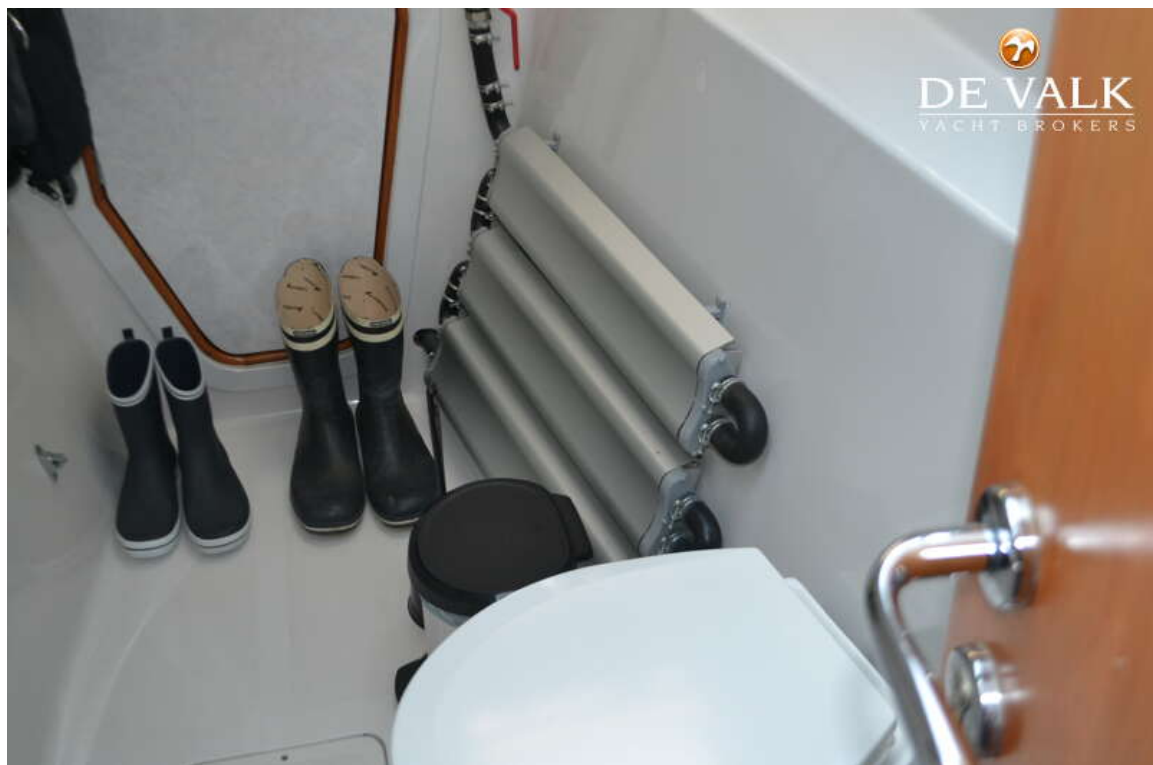
PROUT 39 ESCALE



PROUT 39 ESCALE



PROUT 39 ESCALE



PROUT 39 ESCALE

