



DE VALK  
YACHT BROKERS



AZIMUT 42 FLY



DE VALK  
YACHT BROKERS

BROKERAGE | CHARTER | BERTHS | FINANCE | INSURANCE | YACHT MANAGEMENT

# AZIMUT 42 FLY

## BROKER'S COMMENTS

We think this is the "best on the market ever" Azimut 42 Fly, offered in almost as new condition. Full new hull and superstructure polish plus wax, new anodes and antifouling, all done in April 2024. Engines just 600 hours on the clock. New Flexi teak, new upholstery. Silent Fuel cell technology for extra energy. Fully maintained, turn key hand-over and in immediate sail away condition. Spectacular stunning vessel, needs to be seen!

*Willem Koopmans*

## SPECIFICATIONS

<b>Dimensions</b>	13.26 x 4.15 x 1.45 (m)	<b>Builder</b>	Azimut France
<b>Built</b>	1999	<b>Cabins</b>	2
<b>Material</b>	GRP	<b>Berths</b>	4
<b>Engine(s)</b>	2 x Caterpillar diesel	<b>Hp/Kw</b>	2 x 380.00 (hp), 279.68 (kw)
<b>Asking price</b>	sold (VAT )	<b>Lying</b>	contact sales office

## CONTACT

<b>Sales office</b>	De Valk Costa Blanca	<b>Telephone</b>	+34 96 50 21 569
<b>Address</b>	Costa Blanca Region 03730 Javea Alicante ES	<b>E-mail</b>	costablanca@devalk.nl

## DISCLAIMER

These particulars are given in good faith as supplied but cannot be guaranteed.



# AZIMUT 42 FLY

## GENERAL

Model	AZIMUT 42 FLY
Type	motor yacht
LOA (m)	13,26
LWL (m)	10,85
Beam (m)	4,15
Draft (m)	1,45
Air draft (m)	4,85
Headroom (m)	2,10
Year built	1999
Launched	1999
Builder	Azimut France
Country	France
Displacement (t)	13
CE norm	B
Hull material	GRP
Hull colour	off-white
Hull shape	V-shaped hull
Superstructure material	GRP
Rubbing strake	rubber
Deck material	GRP
Deck finish	non-skid moulded in
Superstructure deck finish	non-skid moulded in
Cockpit deck finish	synthetic teak New 2022/2023
Antifouling (year)	March 2024 plus new anodes
Window material	tempered glass
Flybridge	yes
Flybridge cockpit cover	yes
Flybridge suncover	yes
Radar arch	yes
Fuel tank (litre)	600



# AZIMUT 42 FLY

Fuel tank 2 (litre)	600
Level indicator (fuel tank)	yes
Freshwater tank (litre)	500
Level indicator (freshwater)	yes
Blackwater tank (litre)	130
Greywater tank (litre)	60
Wheel steering	yes
Inside helm position	yes
Flybridge helm position	yes
More info on paintwork	Hull & superstructure fully polished in 2024; she looks like new
Extra info	Very "fresh and clean" presentation
Extra info	Tip top maintained!

## ACCOMMODATION

Cabins	2
Berths	4
Interior	mahogany High gloss, no "milk" in varnish
Floor	carpet Clean and fresh
Open cockpit	yes
Aft deck	yes
Saloon	yes
Headroom saloon (m)	2,10
Heating	Ebespaecher, needs service check
Air-conditioning	Webasto, new (in 2022) installed in owners' cabin and salon
Dinette	yes
Sliding door to aft deck	yes
Galley	yes
Countertop	yes
Sink	Double
Cooker	calor gas 3 burner
Fridge	New 2022



# AZIMUT 42 FLY

Hot water system	220V + engine
Water pressure system	electrical
Owners cabin	French bed
Bed length (m)	2,05
Wardrobe	hanging and shelves
Bathroom	en suite
Toilet	en suite
Toilet system	electric
Wash basin	in the bathroom
Shower	en suite
Guest cabin 1	twin single
Bed length (m)	2,05
Wardrobe	hanging and shelves
Bathroom	shared
Toilet	shared
Toilet system	electric
Wash basin	in the bathroom
Shower	shared
Extra info	New upholstery, Alcantara look

## MACHINERY

No of engines	2
Make	Caterpillar
HP	380
kW	279.68
Fuel	diesel
Year installed	1999
Year of overhaul	Fully in service schedule
Maximum speed (kn)	30
Cruising speed (kn)	20
Engine hours	600



# AZIMUT 42 FLY

Engine cooling system	freshwater heat exchanger
Drive	shaft
Shaft seal	yes
Engine controls	electrical & bowden cable
Gearbox	ZF Hurth hsw 800
Bowthruster	electric Vetus
Exhaust	watercooled
Propeller shaft material	stainless steel
Electric bilge pump	yes
Electrical installation	12/228
Generator	EMI 40-18
Running hours generator	45 (ca.)
Batteries	yes
Start battery	yes
Service battery	yes
Generator battery	yes
Battery charger	Victron Energy Centaur 12/60
Inverter	Victron Energy Phoenix Inverter Smart 12/2000
Shorepower	Via Victron Energy Filax 2 transfer switch
Trimtabs	Bennett
Extra info	Efoy fuel cell silent energy system!
Extra info	Racor filter

## NAVIGATION

Compass	yes
Compass on flybridge	yes
Electric compass	On pilot
Multi control display	yes
Depth sounder/log	yes
VHF	Raymarine
Autopilot	Raytheon ST6000+



Rudder angle indicator	On pilot display
Radar	Raymarine digital
GPS	yes
Radar/GPS	Raymarine, 2x 9"
AIS transponder	yes
EPIRB	yes
Navigation lights	yes

## EQUIPMENT

Bimini	On flybridge, new 2022
Cockpit cushions	Like new, also sunbeds on front deck and flybridge
Cockpit table	yes
Bathing platform	yes
Boarding ladder	yes
Gangway	Opacmare, new hoses hydraulic 2024
Deck shower	yes
Anchor	yes
Anchor chain	50 mtr
Windlass	electrical Lofrans complete new 2023
Capstan	yes
Dinghy	yes
Outboard	yes
Sea railing	yes
Grab rail (superstructure)	yes
Life raft	container Viking RescYou, not included
Life raft (pers)	4
Horn	yes
Fenders	yes
Mooring lines	yes
TV	Grundig, 2x (salon, owners' cabin)
TV receiver	yes



# AZIMUT 42 FLY

Satellite	yes
TracVision ball	KVH Industries M2
Radio-cd player	yes
Cockpit speakers	yes
Speakers in salon	yes
Fire extinguisher	yes
Latest extinguisher survey	Needs check





# AZIMUT 42 FLY



# AZIMUT 42 FLY





# AZIMUT 42 FLY



# AZIMUT 42 FLY





# AZIMUT 42 FLY



# AZIMUT 42 FLY





# AZIMUT 42 FLY



# AZIMUT 42 FLY

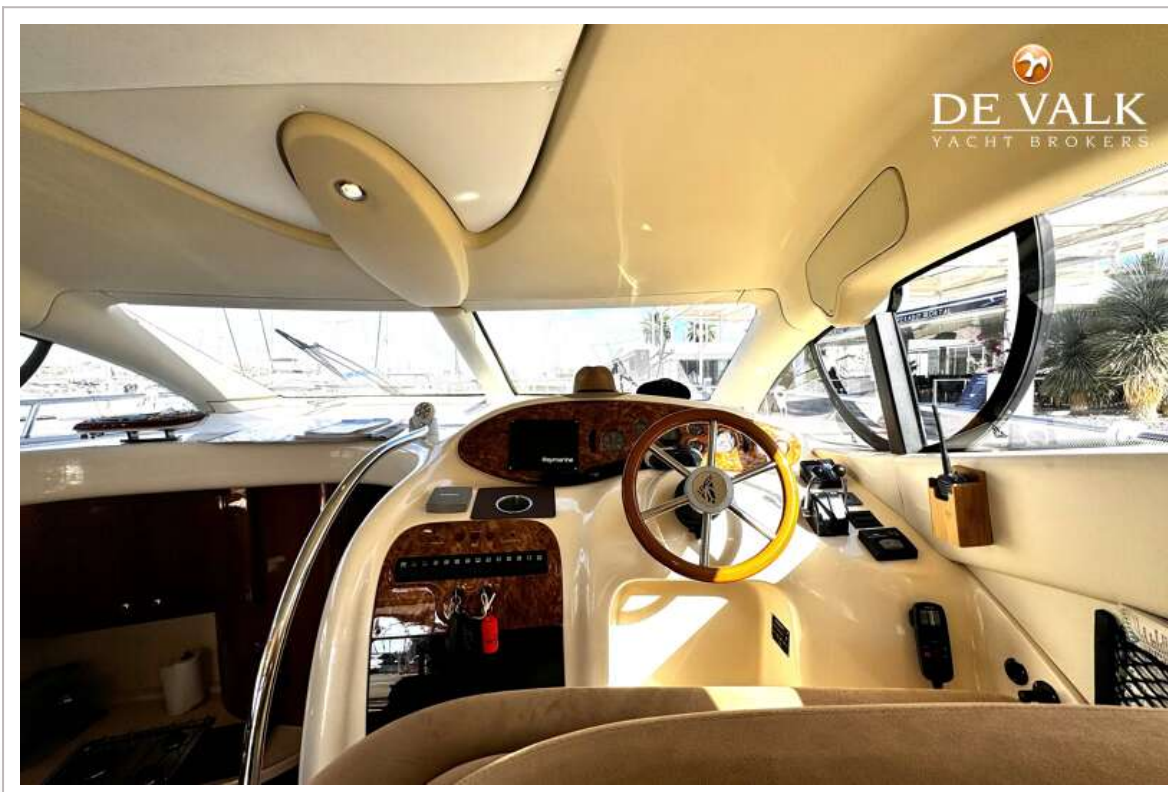




# AZIMUT 42 FLY



# AZIMUT 42 FLY



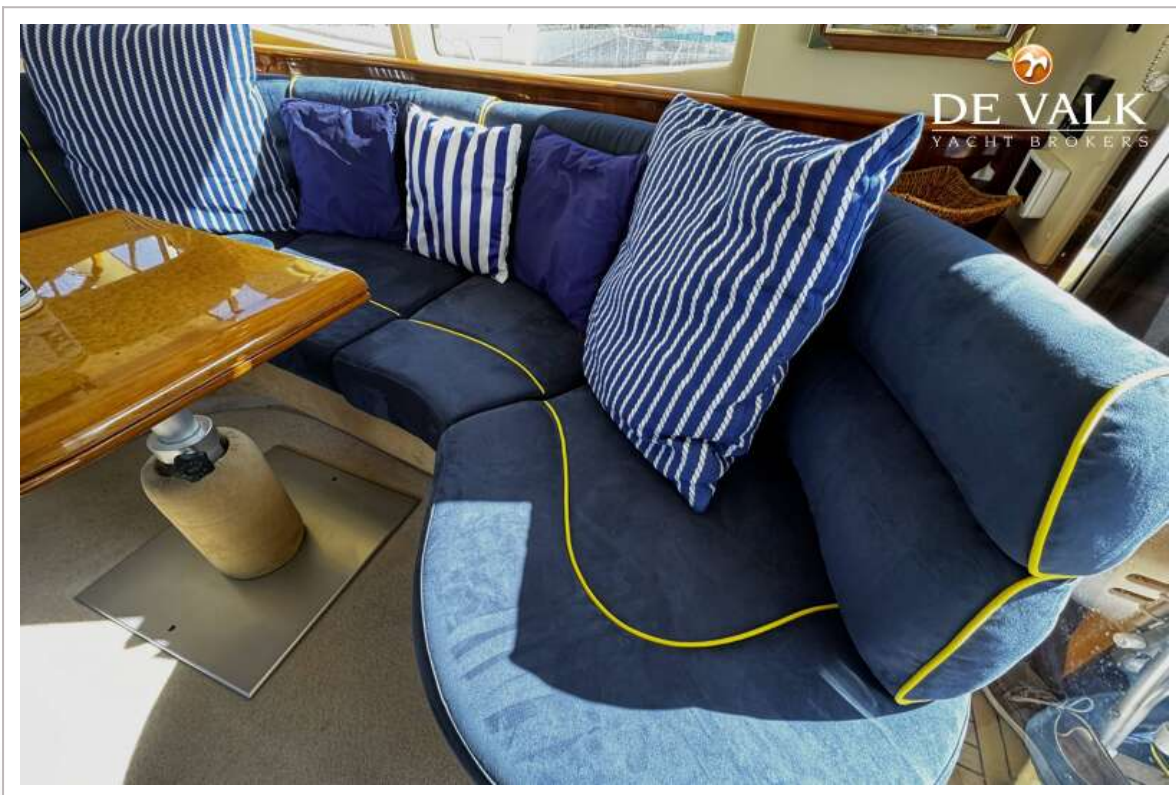


# AZIMUT 42 FLY





# AZIMUT 42 FLY





# AZIMUT 42 FLY

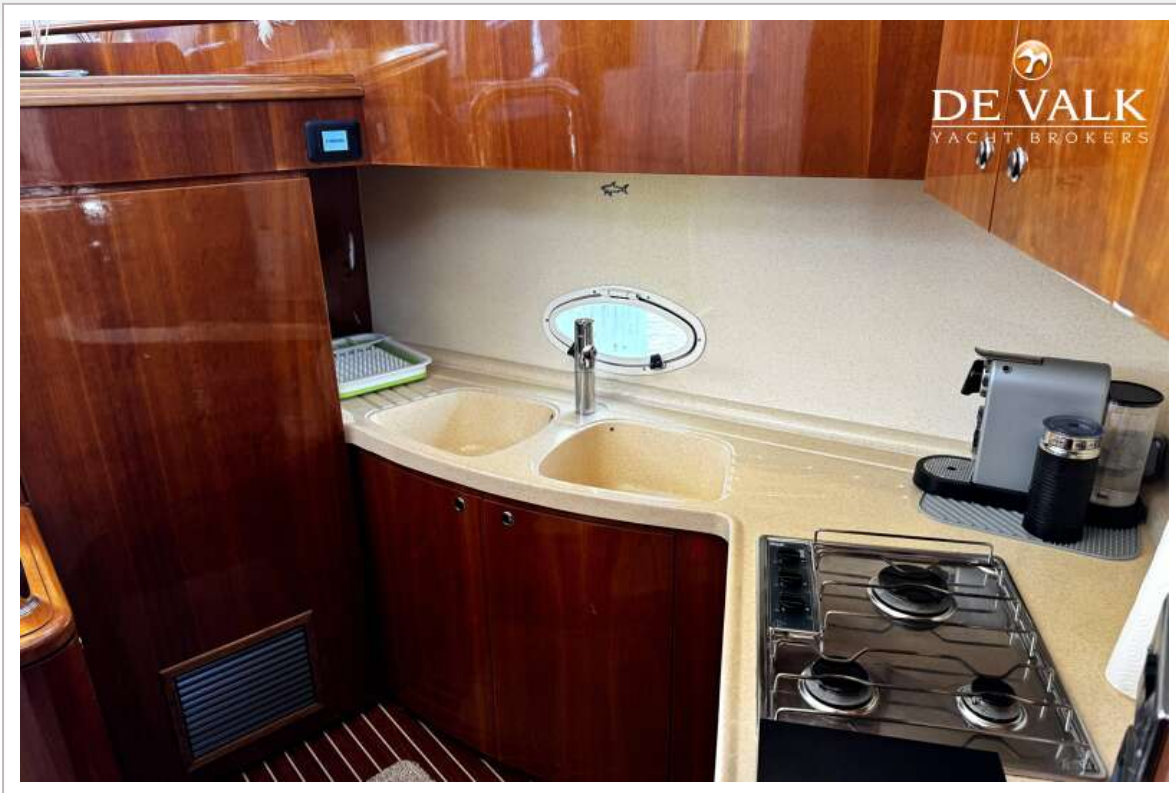


# AZIMUT 42 FLY

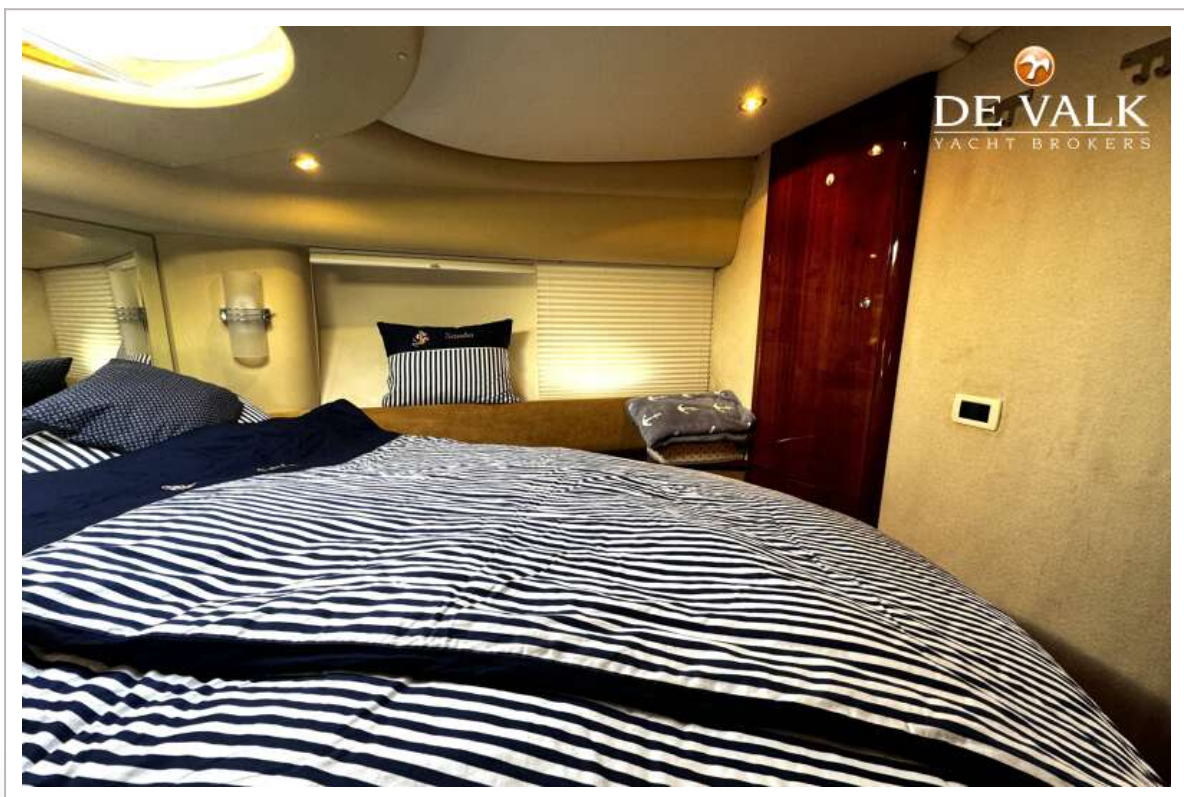
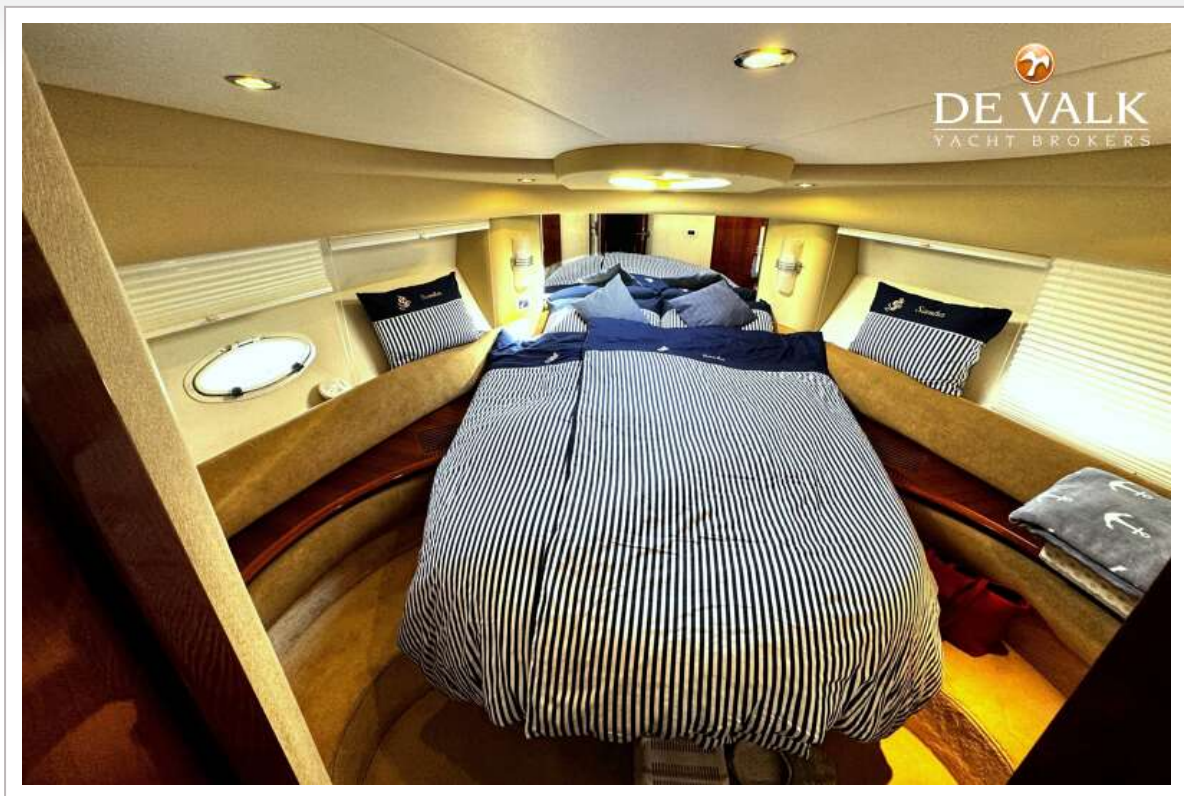




# AZIMUT 42 FLY

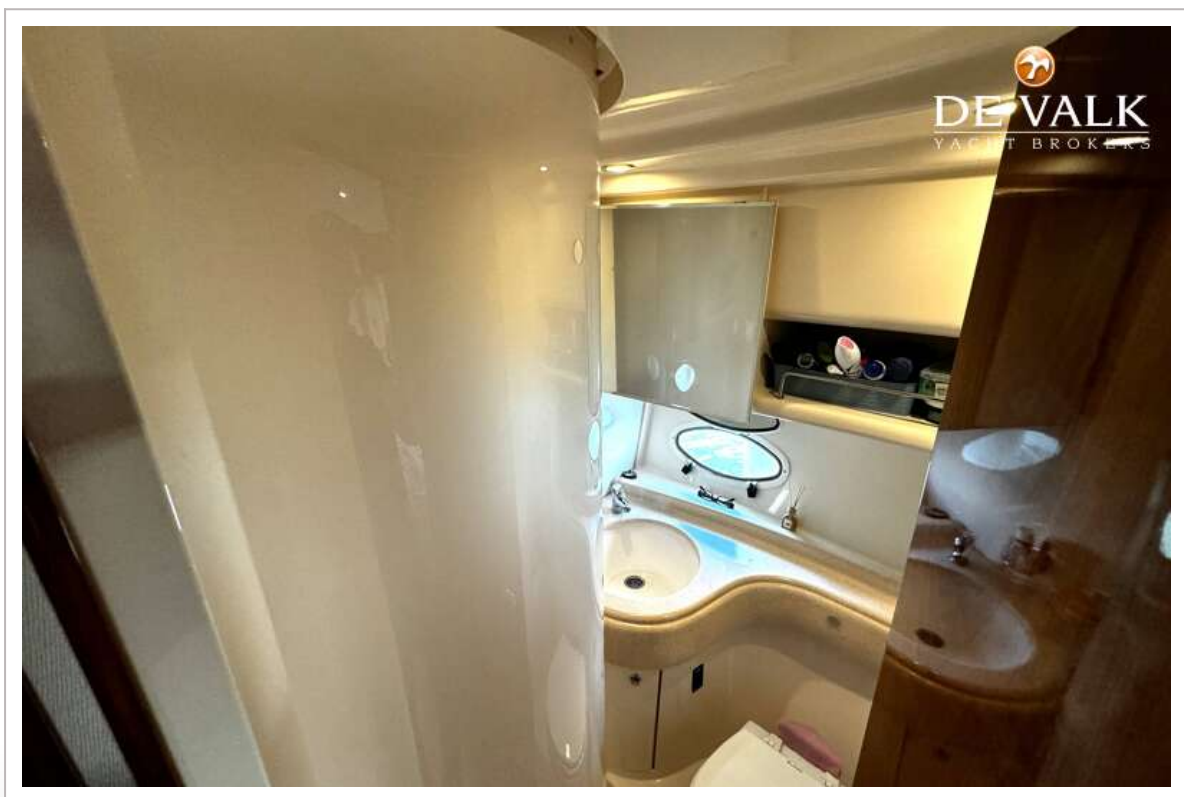


# AZIMUT 42 FLY





# AZIMUT 42 FLY

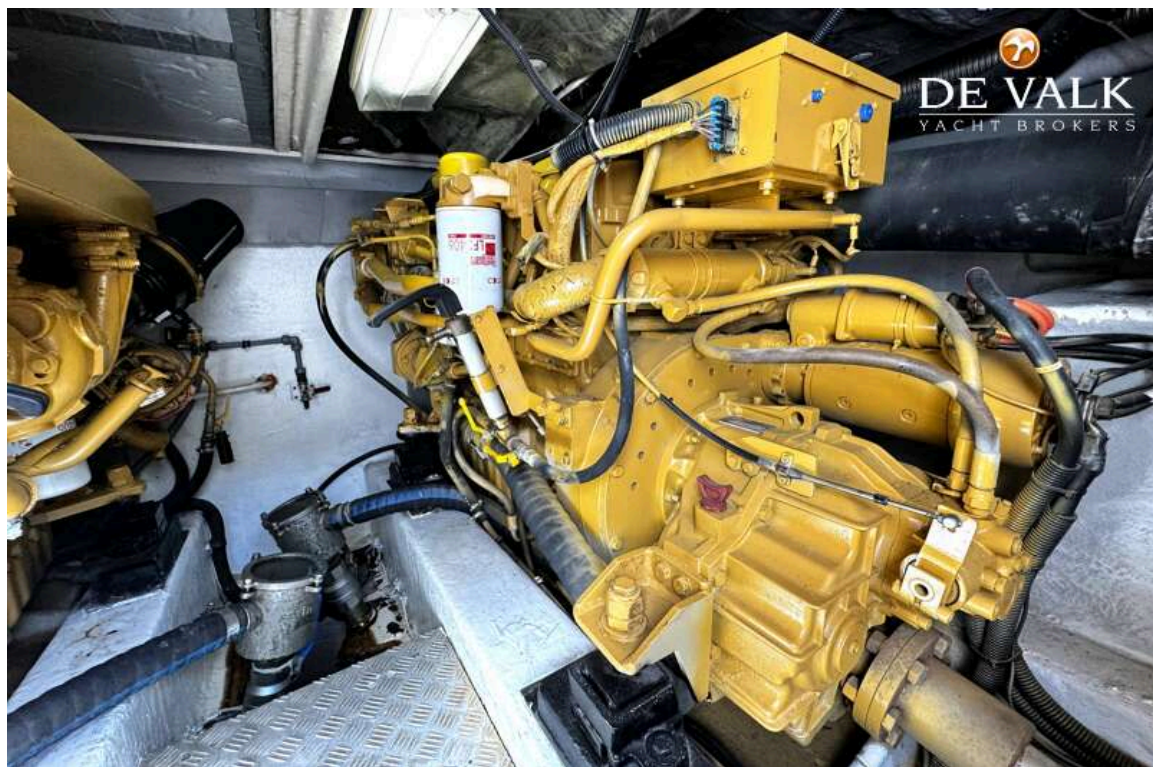


# AZIMUT 42 FLY



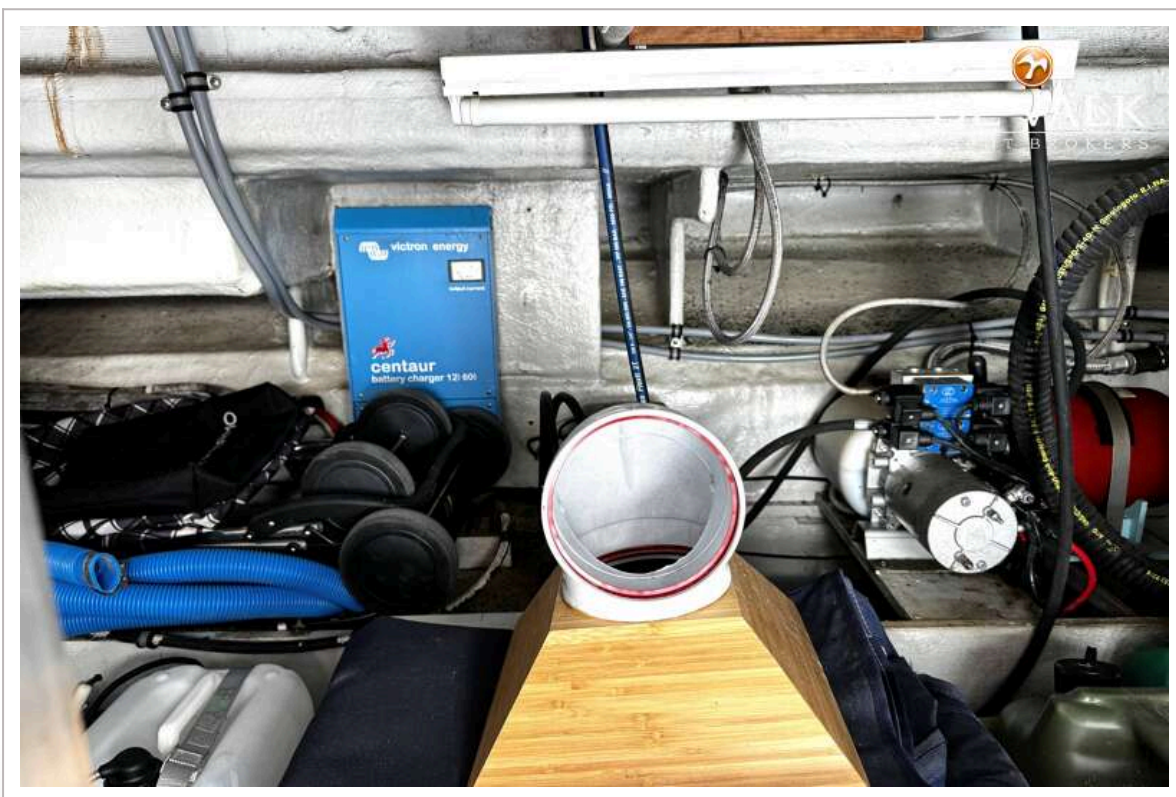


# AZIMUT 42 FLY





# AZIMUT 42 FLY



# AZIMUT 42 FLY



