



LINSSEN GRAND STURDY 60.33 DIAMOND ED.

# LINSSEN GRAND STURDY 60.33 DIAMOND ED.

## BROKER'S COMMENTS

This Linssen Grand Sturdy 60.33 Diamond Edition is ready to take beautiful trips, such as the French, Dutch or German inland waterways. For coastal waters, she is also extremely suitable. This motor yacht is available immediately. A good and high-quality boat, for which Linssen is renowned. Equipped with a bow and stern thruster and powerful engine, she is easy to sail and manoeuvre. The fore and aft cabin with double beds provide as many as 4 berths. An ideal boat for longer trips with family and friends, for example.

**Mark Hesselmans**

## SPECIFICATIONS

<b>Dimensions</b>	10.35 x 3.40 x 1.00 (m)	<b>Builder</b>	Linssen Yachts
<b>Built</b>	2010	<b>Cabins</b>	2
<b>Material</b>	Steel	<b>Berths</b>	4
<b>Engine(s)</b>	1 x Volvo Penta D2-75 diesel	<b>Hp/Kw</b>	75.00 (hp), 55.20 (kw)
<b>Asking price</b>	sold (VAT )	<b>Lying</b>	at sales office

## CONTACT

<b>Sales office</b>	De Valk Loosdrecht B.V.	<b>Telephone</b>	+31 (0)35 582 90 30
<b>Address</b>	't Breukeleveense Meentje 6 1231LM Loosdrecht / Wijdmeren NL	<b>E-mail</b>	loosdrecht@devalk.nl

## DISCLAIMER

These particulars are given in good faith as supplied but cannot be guaranteed.



## GENERAL

Model	LINSSEN GRAND STURDY 60.33 DIAMOND ED.
Type	motor yacht
LOA (m)	10,35
Beam (m)	3,40
Draft (m)	1,00
Air draft (m)	3,45
Headroom (m)	1,95
Year built	2010
Builder	Linssen Yachts
Country	The Netherlands
CE norm	C
Hull material	steel
Hull colour	beige
Hull shape	hard chine
Superstructure material	steel
Rubbing strake	fender rope
Deck material	steel
Deck finish	non-skid paint
Superstructure deck finish	paint
Cockpit deck finish	teak
Window frame	aluminium
Window material	tempered glass
Deckhatch	yes
Portholes	aluminium
Insulation	rockwool
Mast can be lowered	manual
Fuel tank (litre)	stainless steel 240
Level indicator (fuel tank)	Wema
Freshwater tank (litre)	polyethylene 250
Level indicator (freshwater)	Wema



Blackwater tank (litre)	240
Level indicator (blackwater)	Wema
Blackwater tank extraction	deck extraction + pump
Wheel steering	hydraulic
Outside helm position	hydraulic
Extra info	The Linssen has musquito screens
Extra info	The Linssen has a bicycle holder on the bathing platform

## ACCOMMODATION

Cabins	2
Berths	4
Interior	cherry
Floor	teak
Aft deck	yes
Saloon	yes
Headroom saloon (m)	1,90
Heating	diesel ducted hot air Eberspächer airtronic
Chart table	yes
Aft Cabin	yes
Dinette	yes
Opening door to aft deck	yes
Galley	yes
Countertop	corian
Sink	stainless steel
Cooker	calor gas
Oven	SMEV
Gas alarm	Vetus (needs maintenance)
Fridge	Waeco
Freezer	Waeco / In Fridge
Hot water system	220V + engine
Water pressure system	electrical



# LINSSEN GRAND STURDY 60.33 DIAMOND ED.

Owners cabin	French bed
Bed length (m)	1,95
Wardrobe	hanging and shelves
Bathroom	en suite
Toilet	en suite Bemis
Toilet system	electric Jabsco, needs new seals
Wash basin	at the toilet
Shower	en suite
Guest cabin 1	double bed
Bed length (m)	1,95
Wardrobe	hanging and shelves
Bathroom	en suite
Toilet	en suite Bemis
Toilet system	manual Jabsco
Wash basin	in the bathroom
Ironing facilities	yes

## MACHINERY

No of engines	1
Make	Volvo Penta
Type	D2-75
HP	75
kW	55.20
Fuel	diesel
Maximum speed (kn)	7,6
Cruising speed (kn)	6
Engine hours	1281
Engine cooling system	freshwater heat exchanger
Drive	shaft
Shaft seal	yes
Engine controls	bowden cable



<b>Gearbox</b>	hydraulic ZF Hurth marine
<b>Bowthruster</b>	electric Side power
<b>Sternthruster</b>	electric Side power
<b>Exhaust</b>	watercooled
<b>Thrust bearing</b>	yes
<b>Propeller type</b>	fixed
<b>Propeller blades</b>	4
<b>Propeller shaft material</b>	stainless steel
<b>Shaft lubrication</b>	water
<b>Electric bilge pump</b>	yes
<b>Batteries</b>	yes
<b>Start battery</b>	Mastervolt 90Ah AGM
<b>Service battery</b>	yes
<b>Bowthruster battery</b>	yes
<b>Battery monitor</b>	Mastervolt
<b>Battery charger/inverter</b>	Mastervolt combi 12/2000 - 100
<b>Diode battery combiners</b>	yes
<b>Shorepower</b>	with cable

## NAVIGATION

<b>Depth sounder/log</b>	Raymarine ST60+
<b>VHF</b>	Raymarine RAY218E
<b>Rudder angle indicator</b>	Raymarine ST60+
<b>GPS</b>	Wema
<b>Navigation lights</b>	yes

## EQUIPMENT

<b>Cockpit cover</b>	yes
<b>Bimini</b>	yes
<b>Cockpit cushions</b>	yes
<b>Cockpit chairs</b>	yes



Bathing platform	yes
Boarding ladder	stainless steel
Deck shower	yes
Anchor	yes
Anchor chain	yes
Windlass	manual
Sea railing	stainless steel
Railing side opening gates	yes
Wiper	yes
Horn	electric Vetus 12v
Fenders	yes
Mooring lines	yes
TV receiver	Glomex
Radio	Kenwood 50wx4
Radio-cd player	Kenwood 50wx4
Cockpit speakers	yes
Speakers in salon	yes
Speakers in cabin	yes





# LINSSEN GRAND STURDY 60.33 DIAMOND ED.





# LINSSEN GRAND STURDY 60.33 DIAMOND ED.







# LINSSEN GRAND STURDY 60.33 DIAMOND ED.



# LINSSEN GRAND STURDY 60.33 DIAMOND ED.





# LINSSEN GRAND STURDY 60.33 DIAMOND ED.

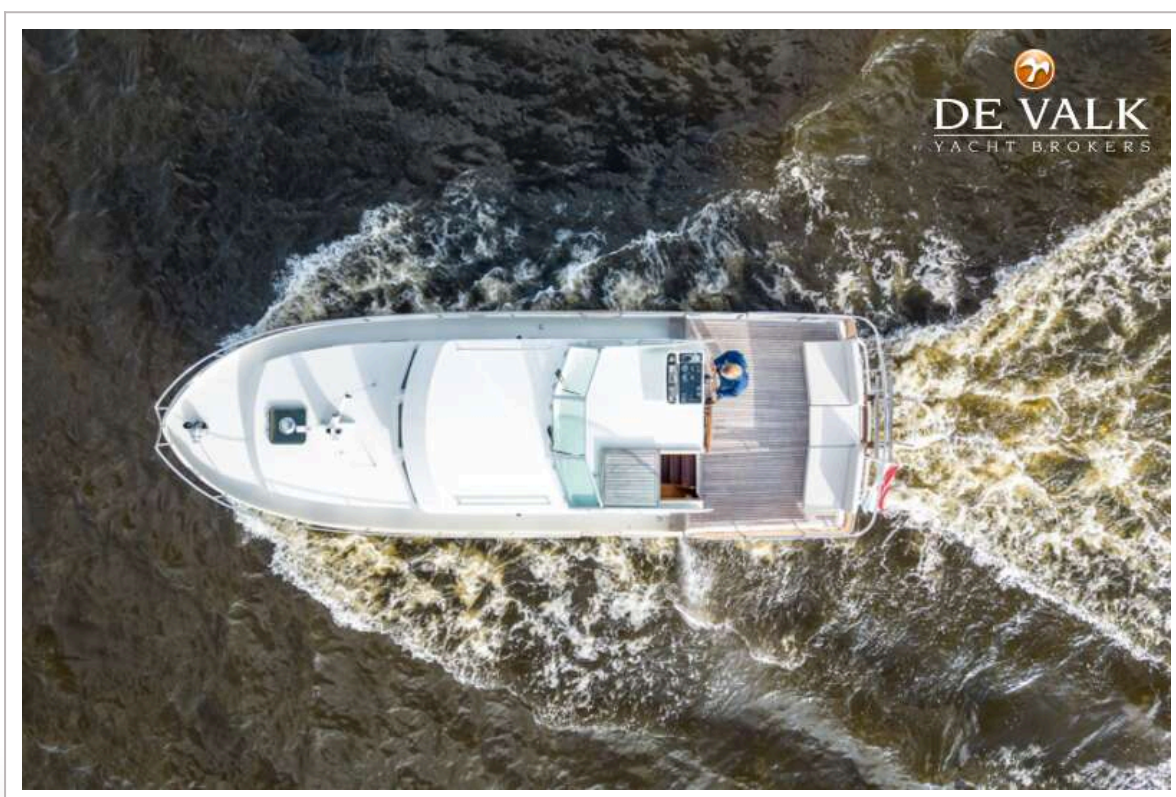


# LINSSEN GRAND STURDY 60.33 DIAMOND ED.





# LINSSEN GRAND STURDY 60.33 DIAMOND ED.



# LINSSEN GRAND STURDY 60.33 DIAMOND ED.





# LINSSEN GRAND STURDY 60.33 DIAMOND ED.



# LINSSEN GRAND STURDY 60.33 DIAMOND ED.

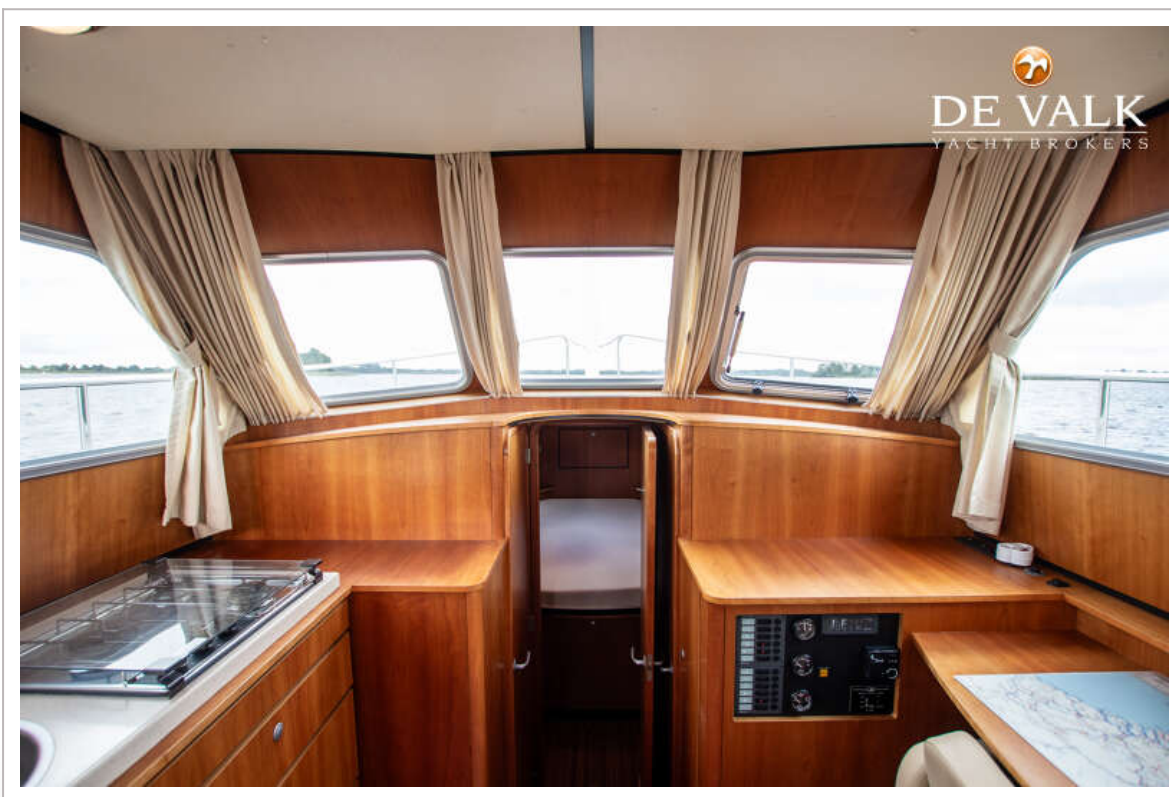
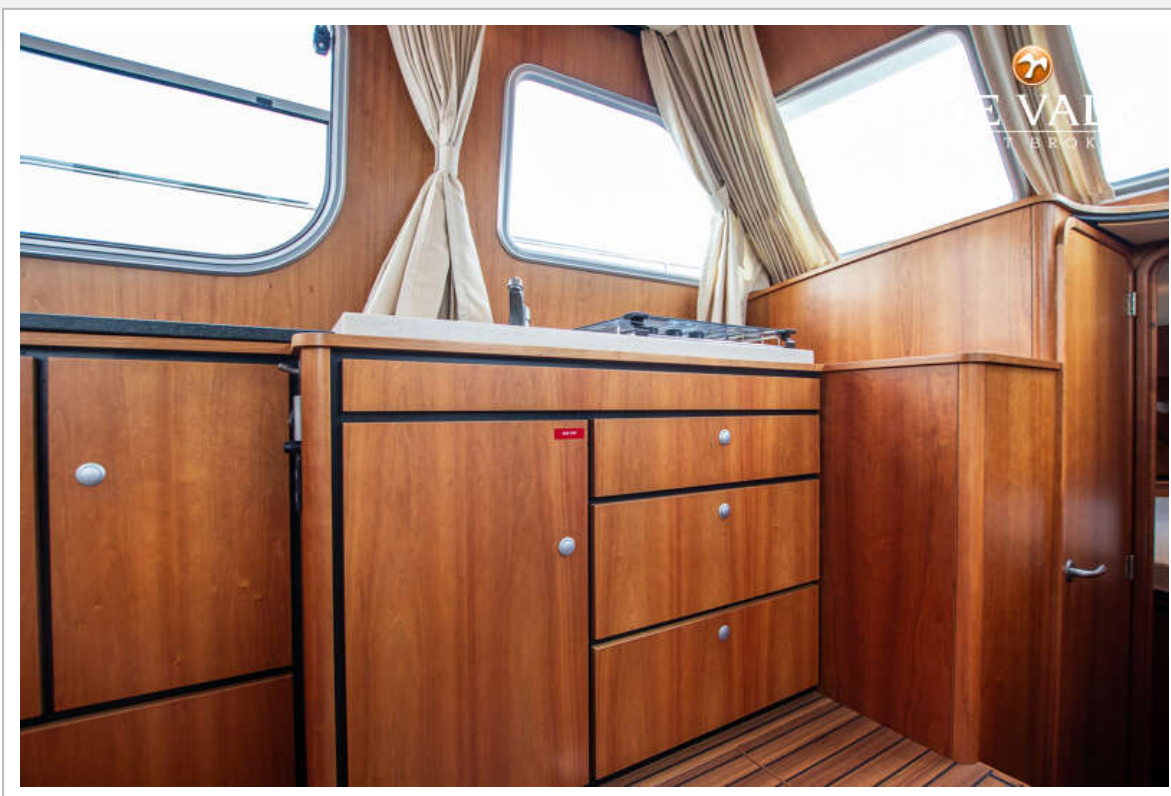




# LINSSEN GRAND STURDY 60.33 DIAMOND ED.

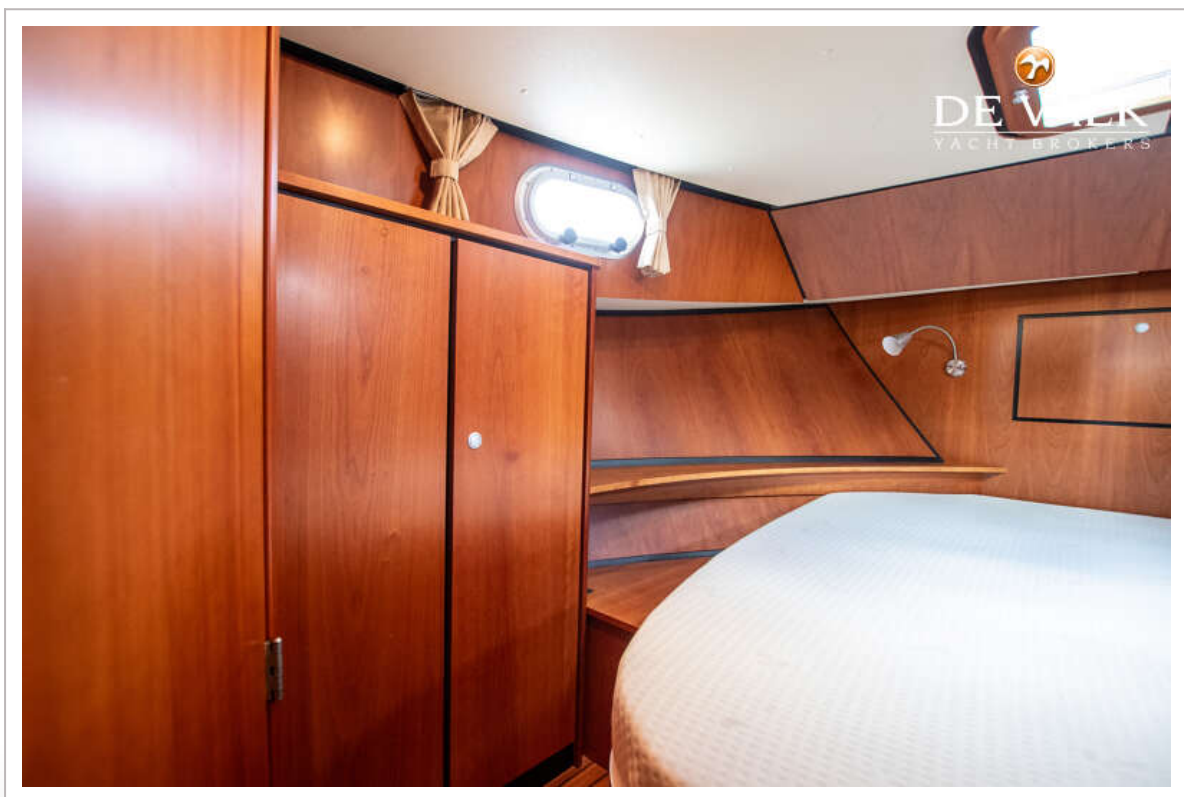
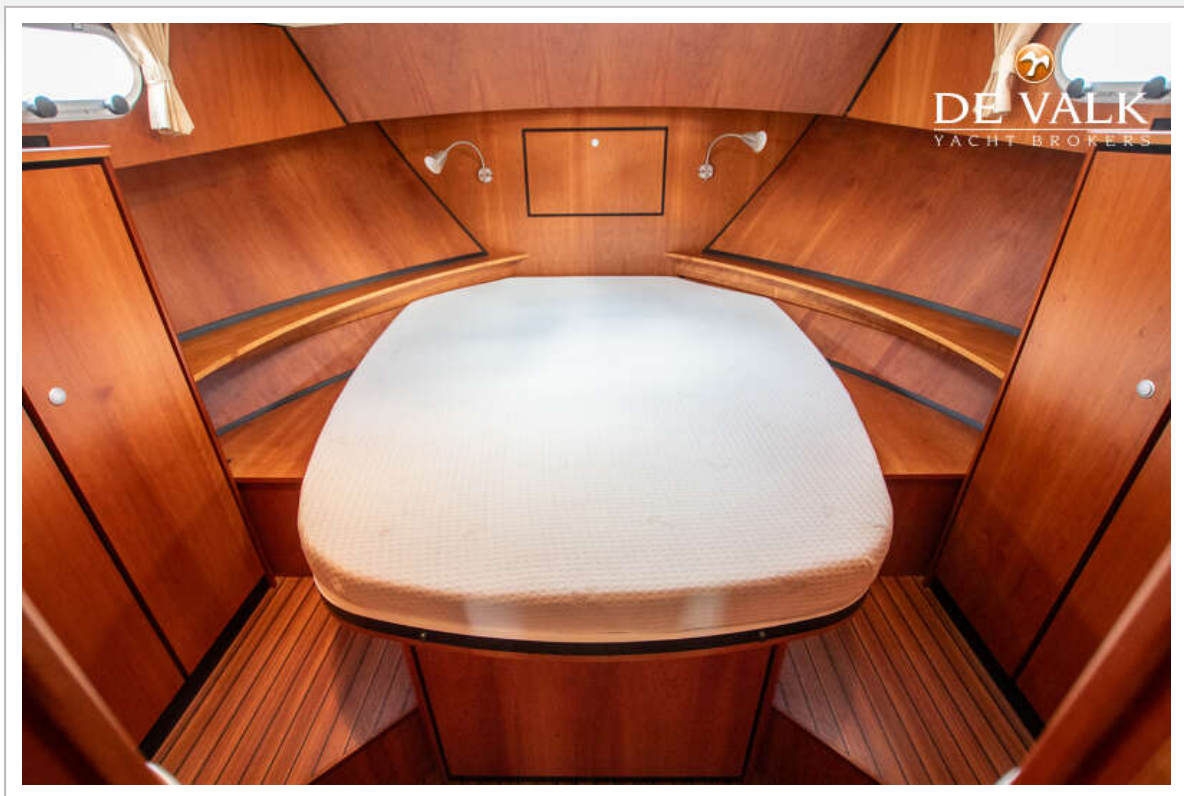


# LINSSEN GRAND STURDY 60.33 DIAMOND ED.





# LINSSEN GRAND STURDY 60.33 DIAMOND ED.

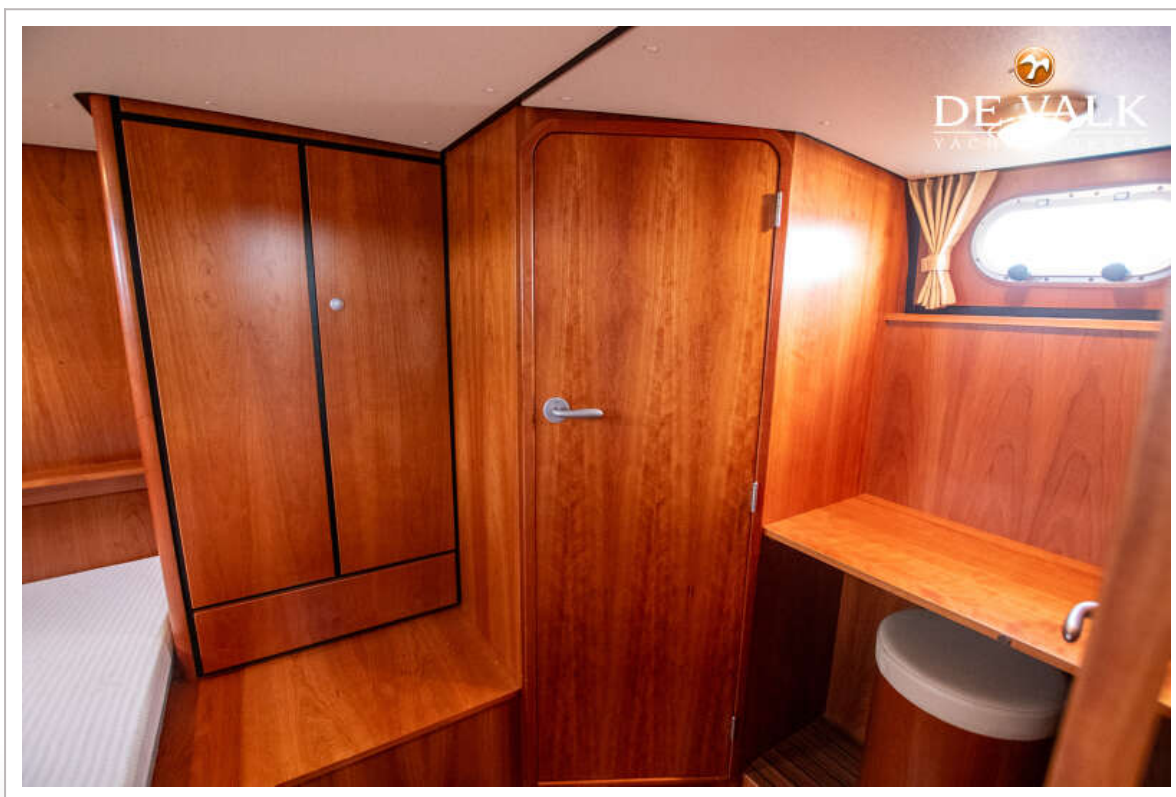
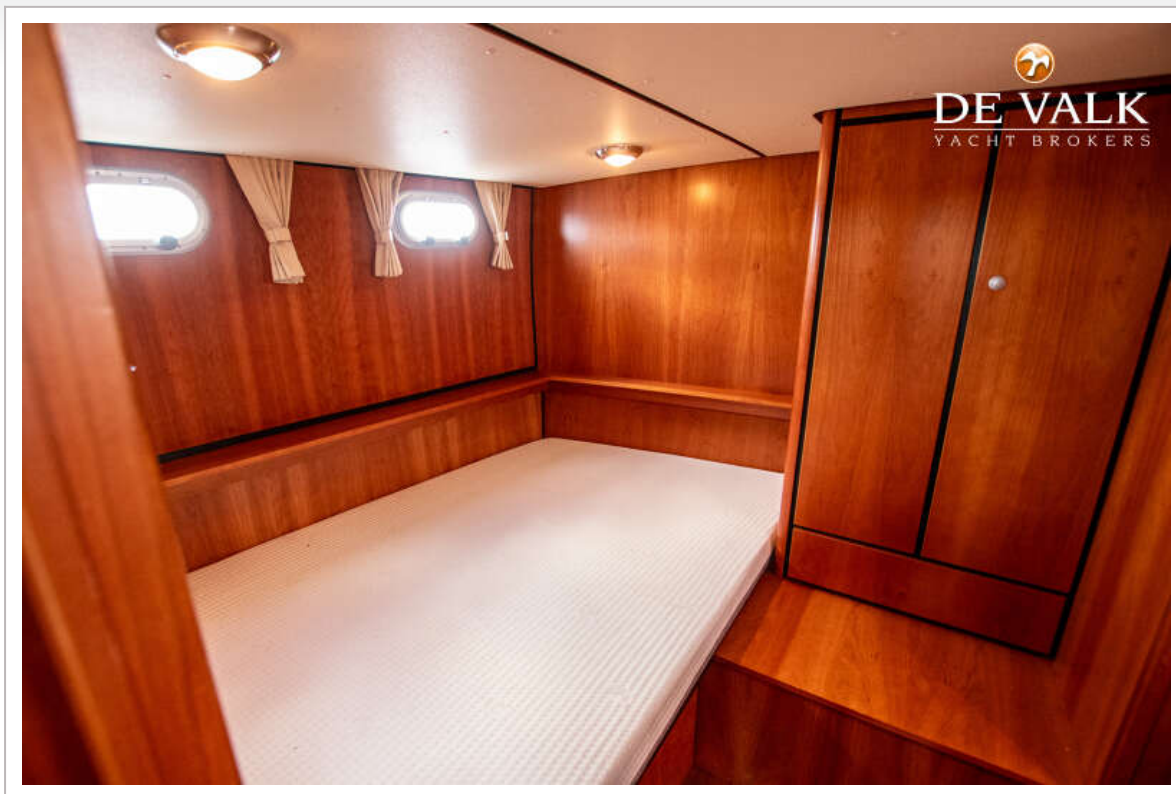


# LINSSEN GRAND STURDY 60.33 DIAMOND ED.

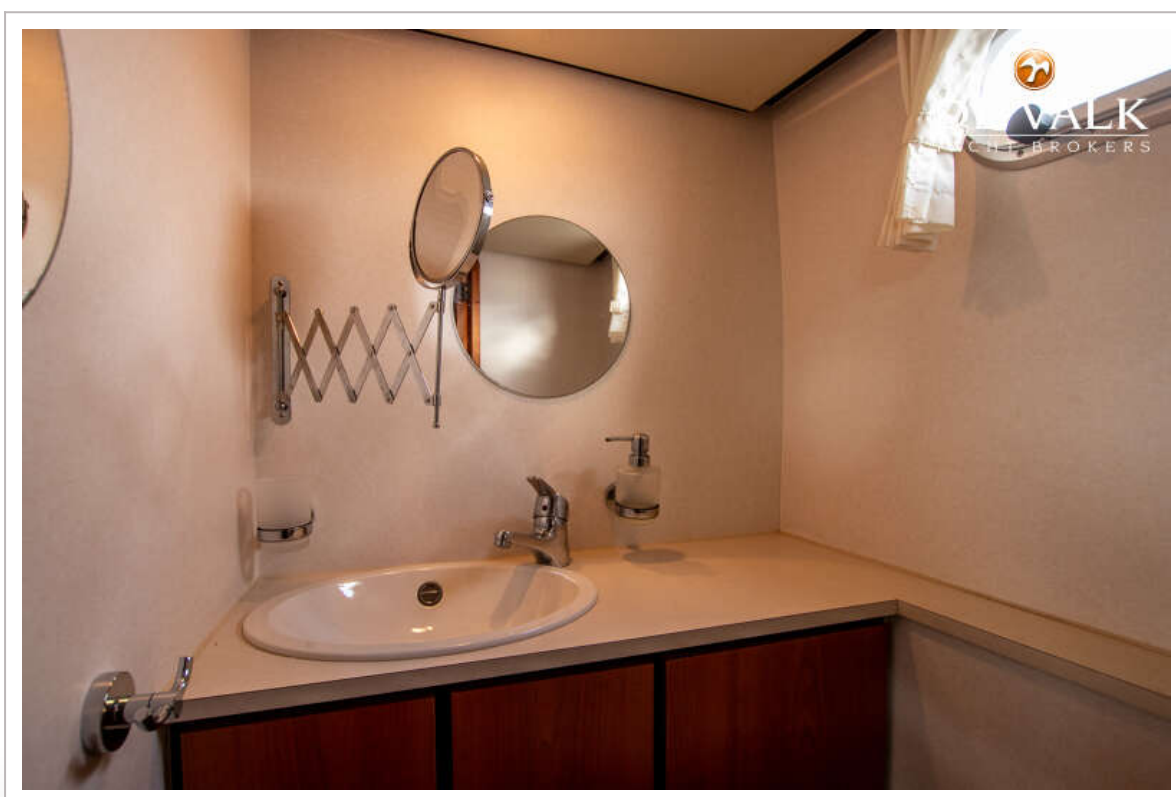
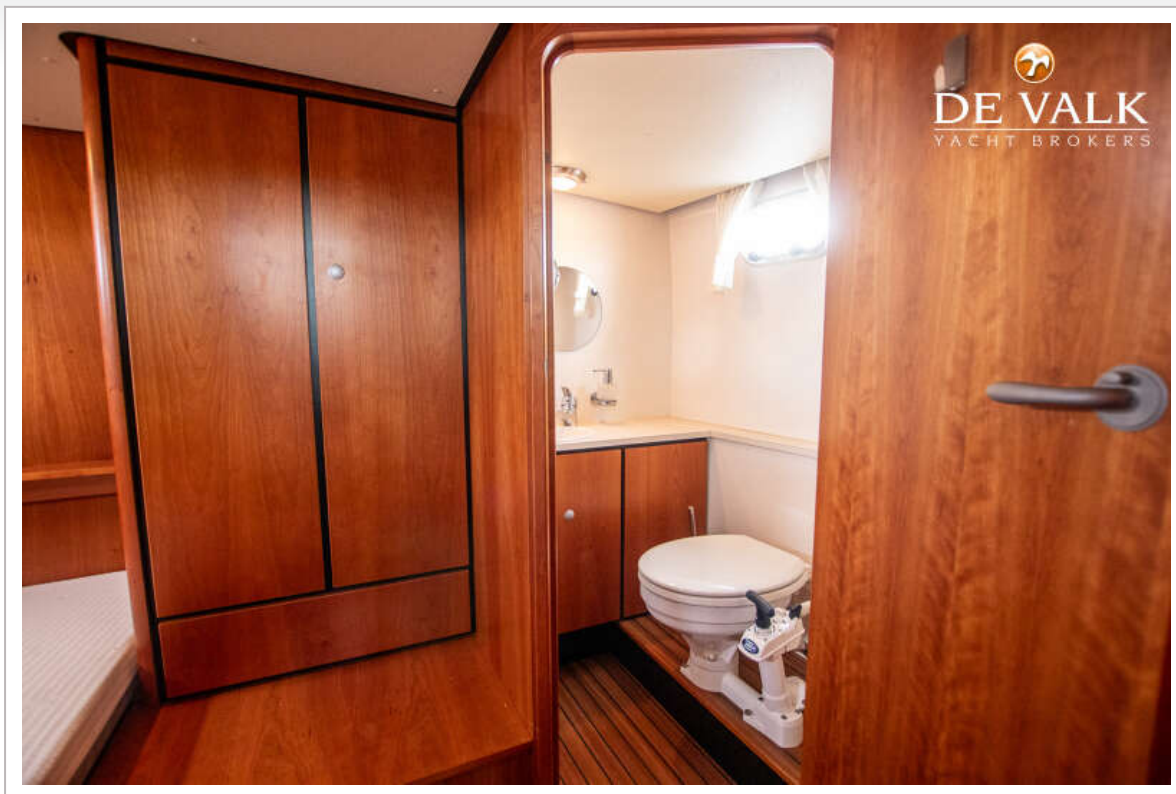


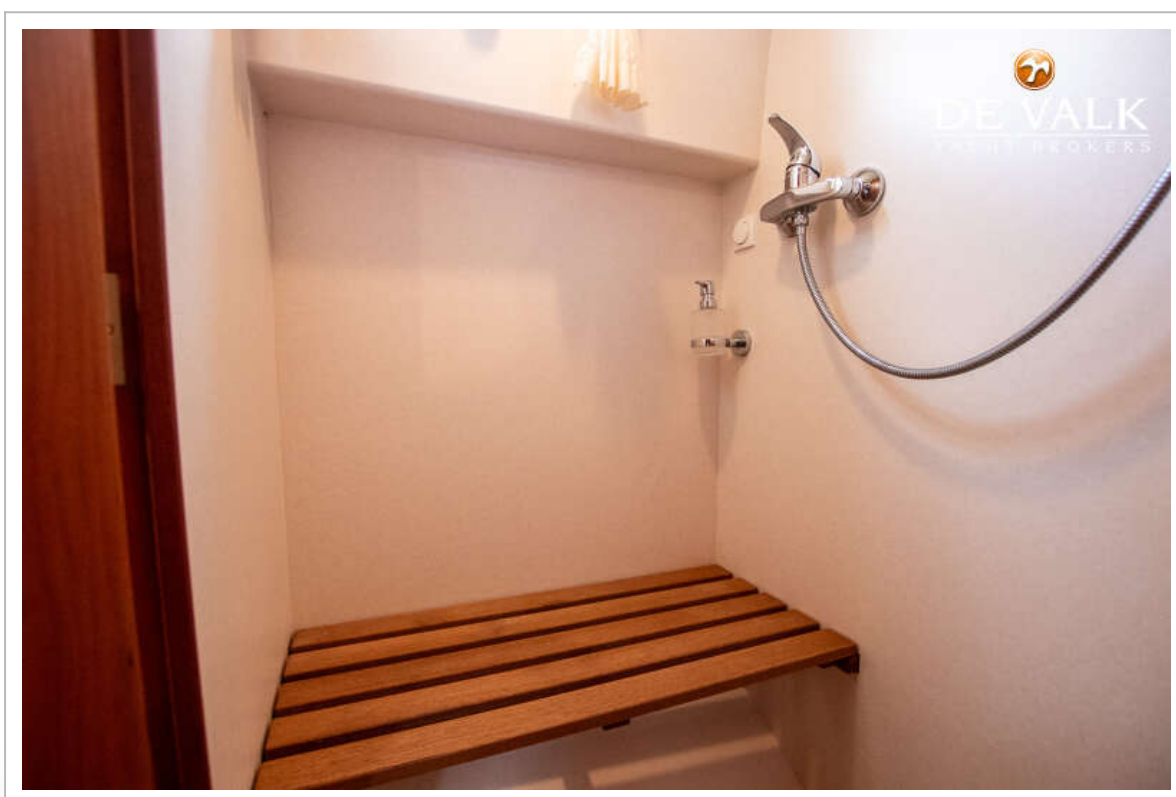
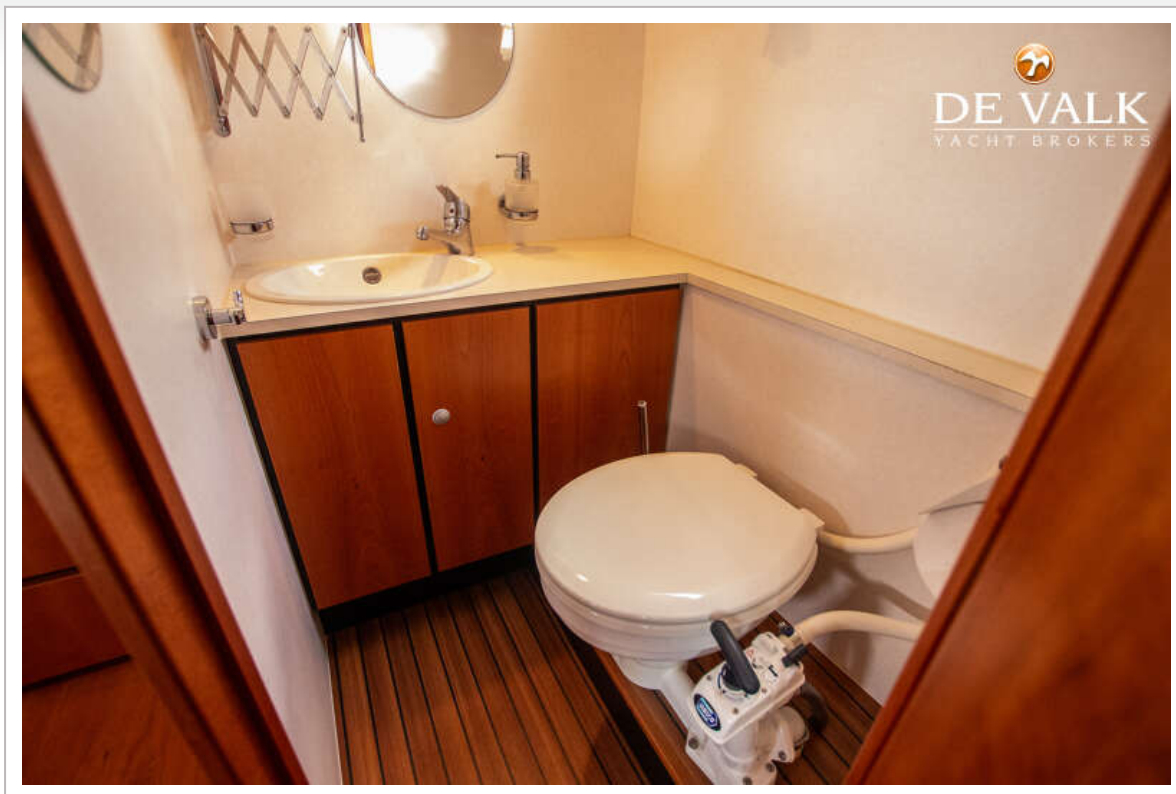


# LINSSEN GRAND STURDY 60.33 DIAMOND ED.



# LINSSEN GRAND STURDY 60.33 DIAMOND ED.



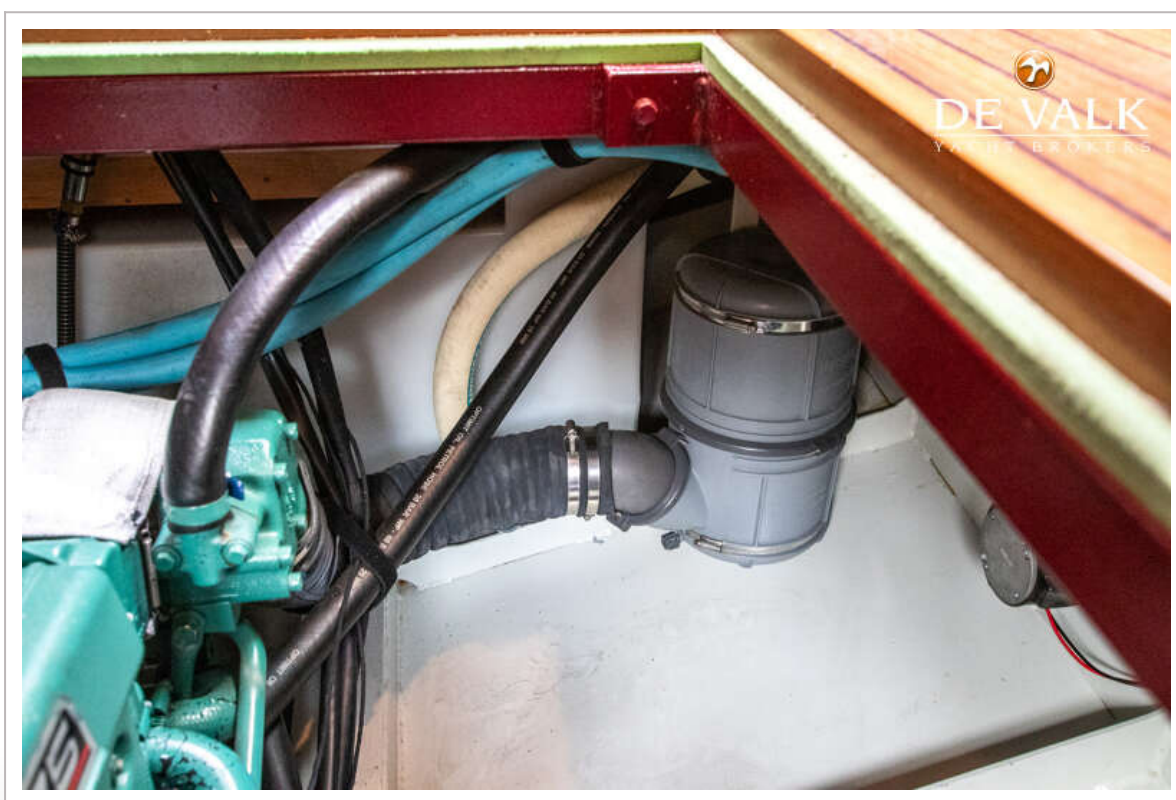




# LINSSEN GRAND STURDY 60.33 DIAMOND ED.









# LINSSEN GRAND STURDY 60.33 DIAMOND ED.

