



## X-YACHTS X-POWER 33C

# X-YACHTS X-POWER 33C

## BROKER'S COMMENTS

The X-Power 33C, designed and built to the high standards of X-Yachts, offers an unparalleled combination of ease of use and luxury. Fully equipped with all modern conveniences, it is the perfect day cruiser. Powered by a 370hp Yanmar diesel engine, it can reach speeds of up to 35 knots. Would you like more information or to see the X-Power 33C in person? Please feel free to contact us.

*Julian de Heer*

## SPECIFICATIONS

<b>Dimensions</b>	10.20 x 3.10 x 1.20 (m)	<b>Builder</b>	X-Yachts
<b>Built</b>	2021	<b>Cabins</b>	1
<b>Material</b>	GRP	<b>Berths</b>	2
<b>Engine(s)</b>	1 x Yanmar 8LV370Z diesel	<b>Hp/Kw</b>	370.00 (hp), 272.32 (kw)
<b>Asking price</b>	€ 259.000 (VAT Not paid)	<b>Lying</b>	contact Loosdrecht

## CONTACT

<b>Sales office</b>	De Valk Loosdrecht B.V.	<b>Telephone</b>	+31 (0)35 582 90 30
<b>Address</b>	't Breukeleveense Meentje 6 1231LM Loosdrecht / Wijdmeren NL	<b>E-mail</b>	loosdrecht@devalk.nl

## DISCLAIMER

These particulars are given in good faith as supplied but cannot be guaranteed.



## GENERAL

Model	X-YACHTS X-POWER 33C
Type	motor yacht
LOA (m)	10,20
Beam (m)	3,10
Draft (m)	1,20
Year built	2021
Builder	X-Yachts
Hull material	GRP
Hull colour	white
Hull shape	deep-V
Superstructure material	GRP
Deck material	GRP
Deck finish	synthetic teak
Fuel tank (litre)	380
Level indicator (fuel tank)	yes
Freshwater tank (litre)	100
Outside helm position	yes

## ACCOMMODATION

Cabins	1
Berths	2
Interior	mahogany
Opening door to cockpit	yes
Sink	GRP
Cooker	calor gas
Fridge	2x drawer fridge (30l capacity each)
Water pressure system	electrical
Toilet	separate
Toilet system	electric



## MACHINERY

No of engines	1
Make	Yanmar
Type	8LV370Z
HP	370
kW	272.32
Fuel	diesel
Maximum speed (kn)	35
Drive	Z-drive
Gearbox	hydraulic
Engine controls	electrical
Bowthruster	yes
Sternthruster	yes
Propeller type	fixed
Start battery	yes
Service battery	yes
Battery charger/inverter	Combined charger/inverter (12V/2000W/60A)
Shorepower	with cable
Trimtabs	ZipWake interceptor system

## NAVIGATION

Multi control display	2x Simrad 16" MO16-T display
Depth sounder/log	2x Simrad 16" MO16-T display
Autopilot	Simrad AP44 autopilot system with 4.1" colour display
Plotter/GPS	Simrad
Navigation lights	yes

## EQUIPMENT

Fixed windscreen	yes
Fixed hardtop	yes



# X-YACHTS X-POWER 33C

Cockpit cushions	Sun cushions
Bow ladder	yes
Deck shower	Hot and warm
Wiper	yes
Horn	yes
Fenders	yes
Mooring lines	yes
Radio	yes
Surround Sound System	Fusion Apollo MS-RA770
Speakers in salon	yes



# X-YACHTS X-POWER 33C





# X-YACHTS X-POWER 33C



# X-YACHTS X-POWER 33C





# X-YACHTS X-POWER 33C



## X-YACHTS X-POWER 33C

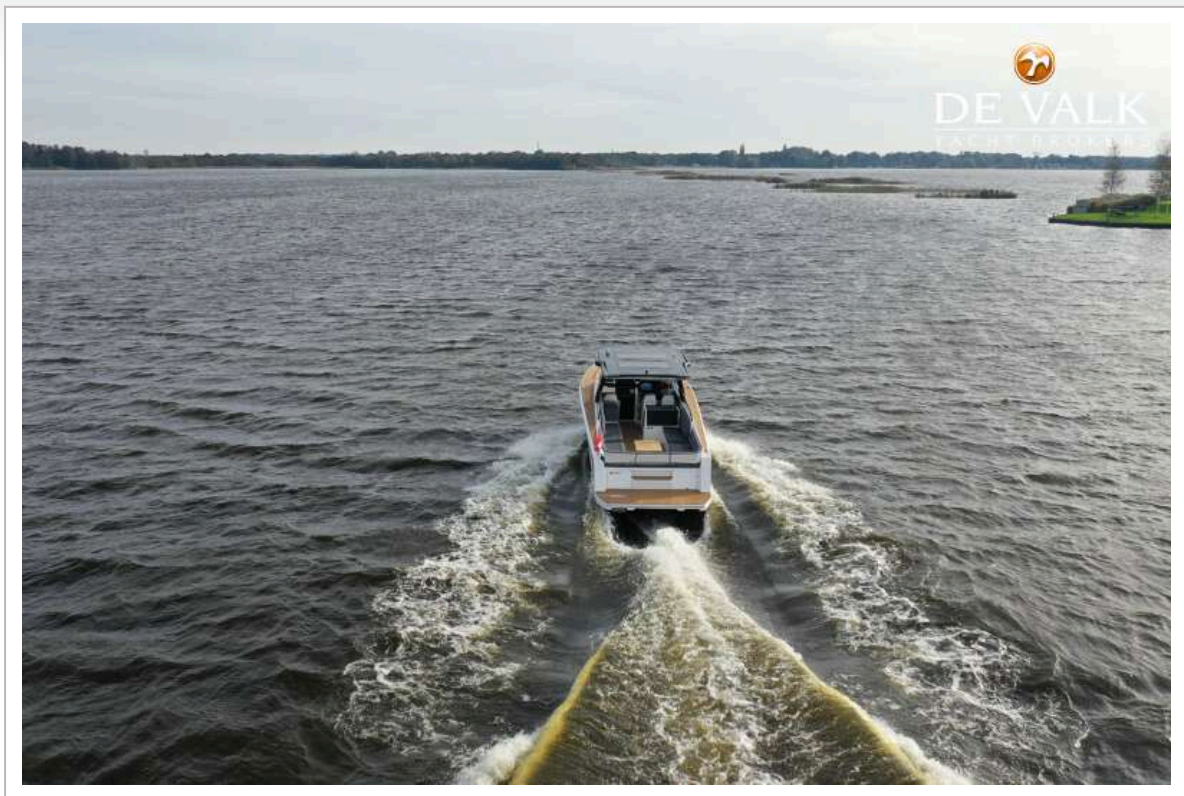


# X-YACHTS X-POWER 33C





# X-YACHTS X-POWER 33C





# X-YACHTS X-POWER 33C



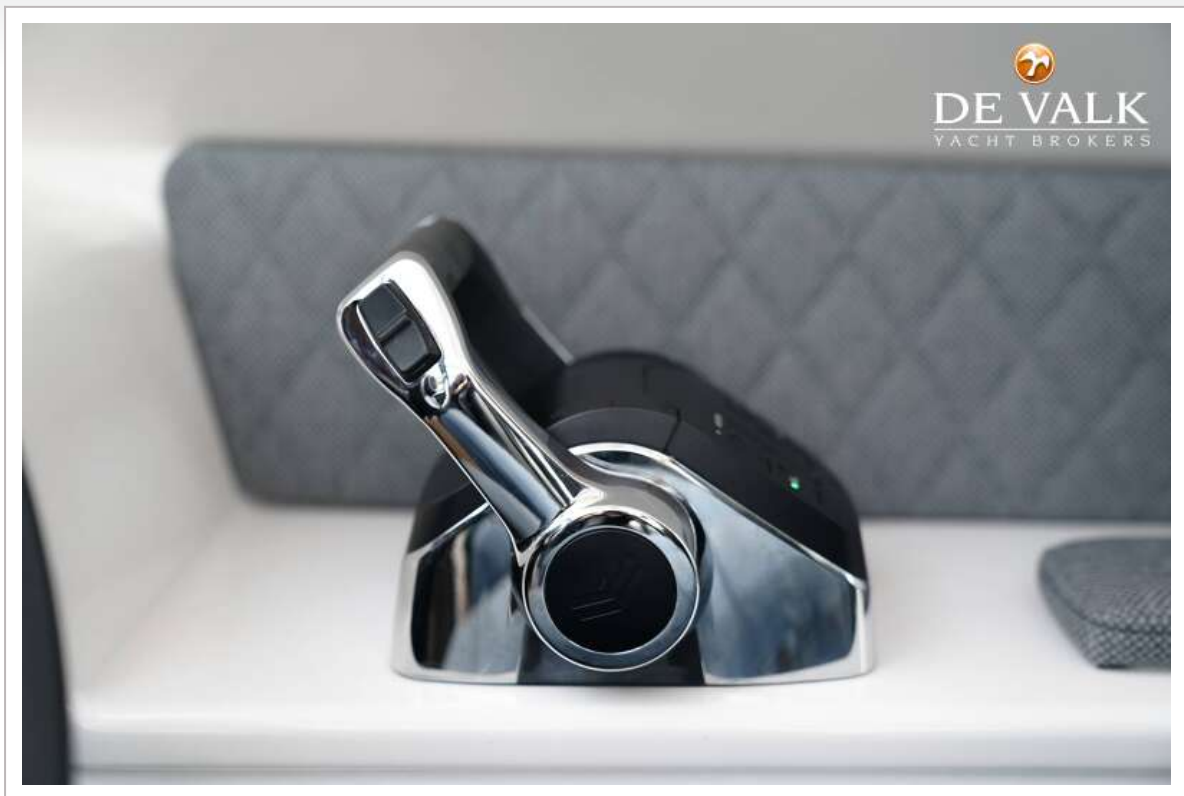
# X-YACHTS X-POWER 33C





# X-YACHTS X-POWER 33C







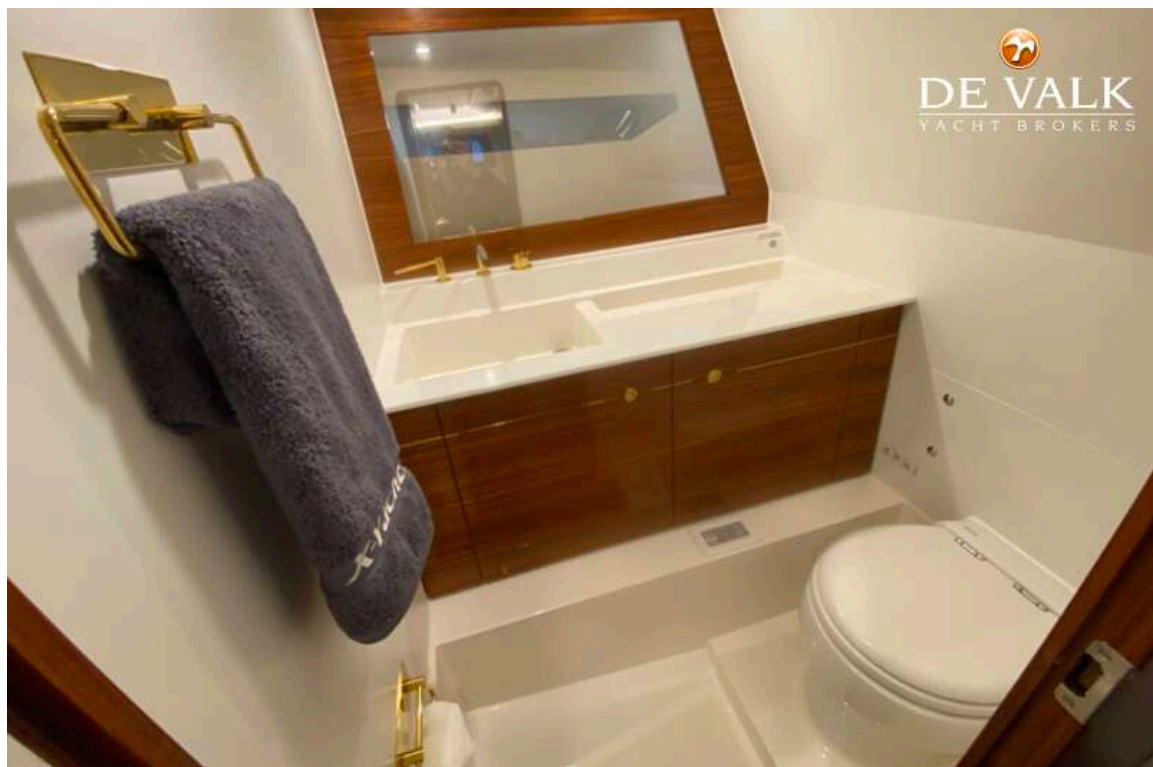
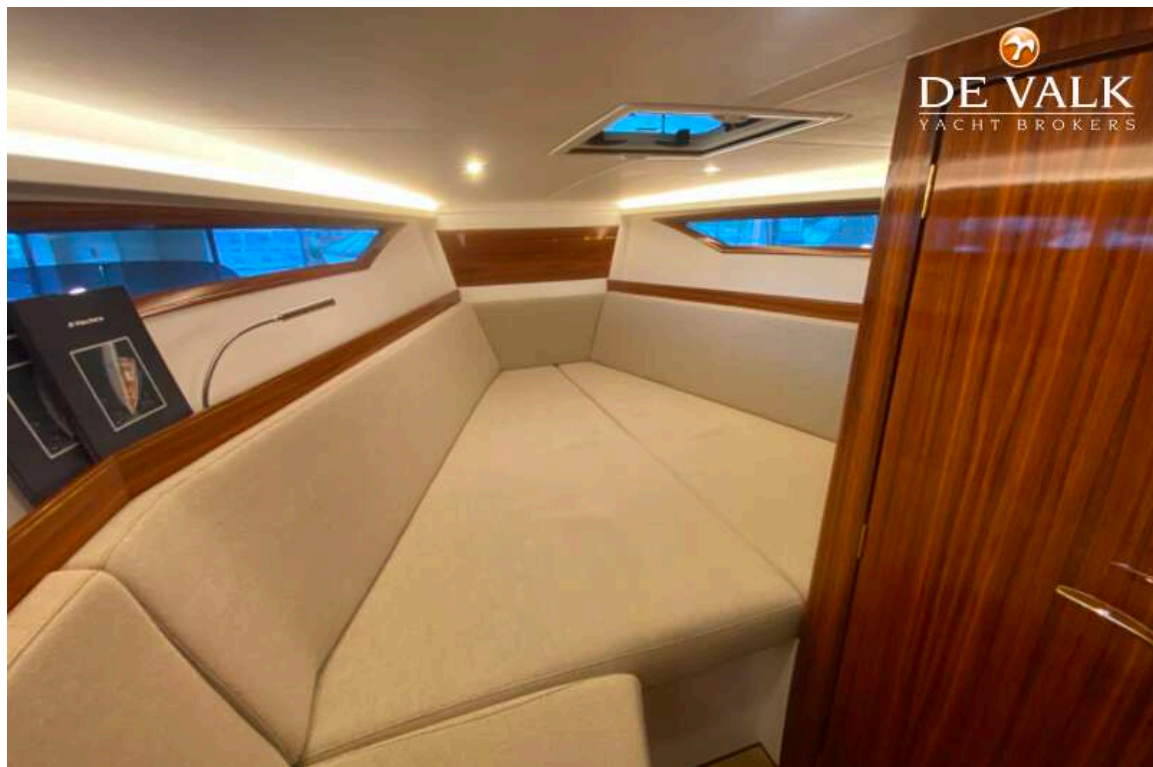
# X-YACHTS X-POWER 33C



# X-YACHTS X-POWER 33C

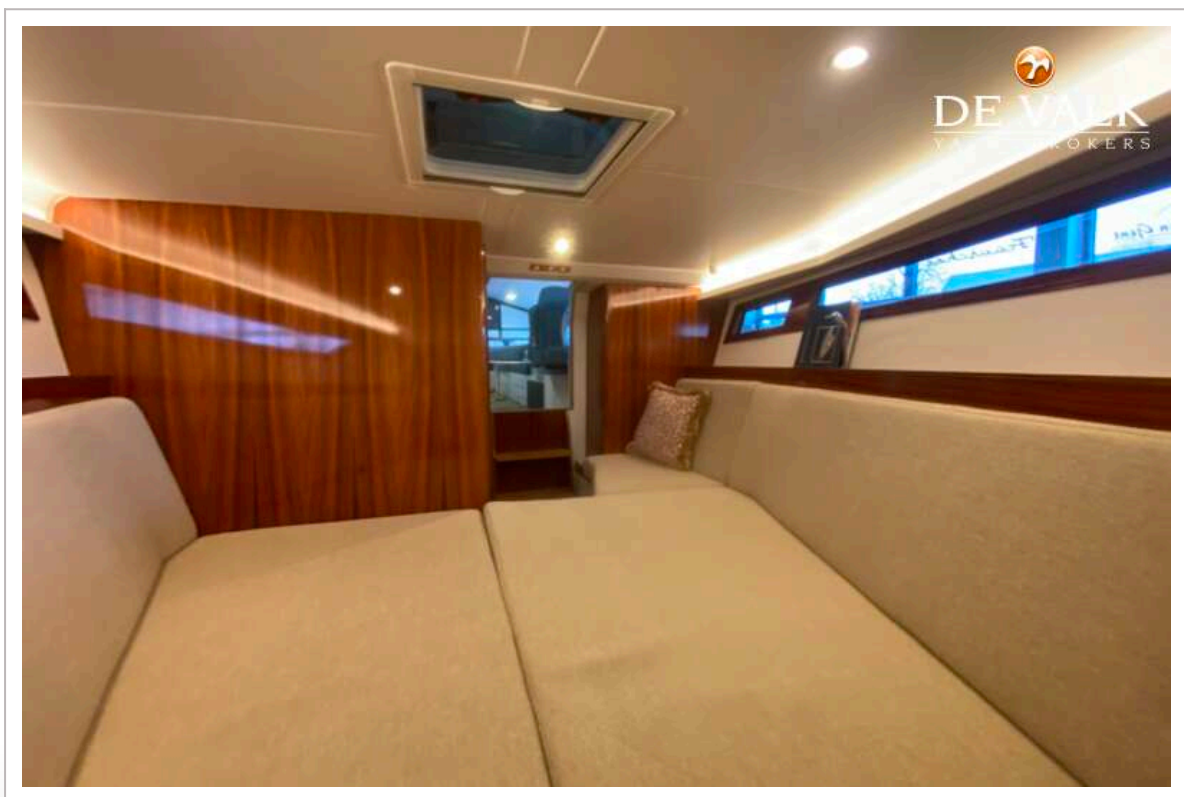
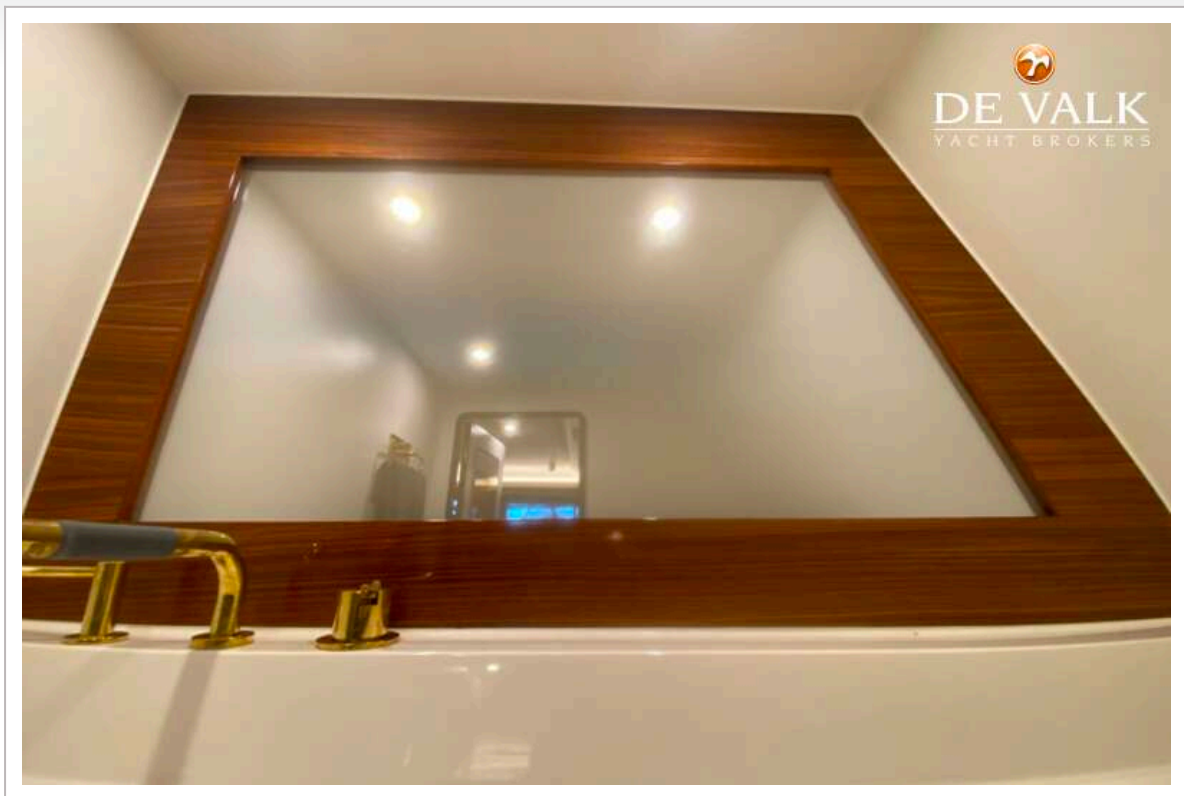


# X-YACHTS X-POWER 33C



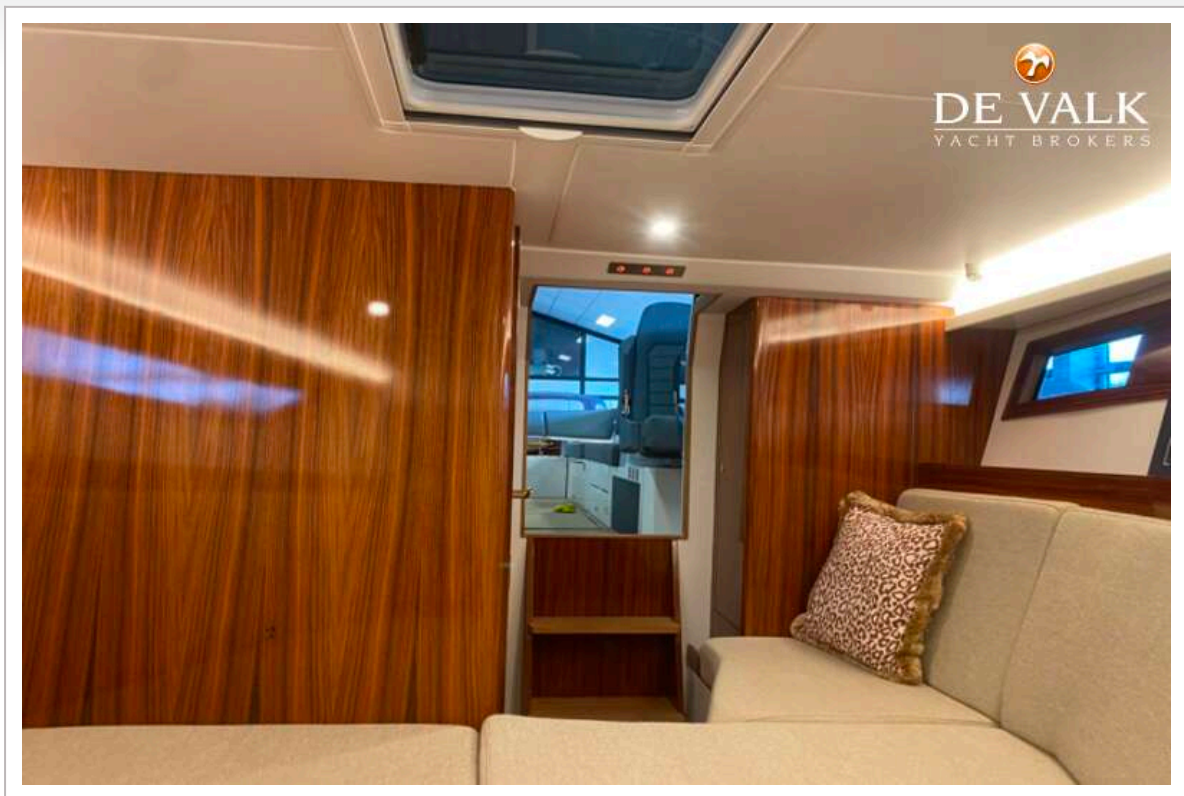


# X-YACHTS X-POWER 33C





# X-YACHTS X-POWER 33C



# X-YACHTS X-POWER 33C





# X-YACHTS X-POWER 33C

