



DE VALK  
YACHT BROKERS



FAURBY 393



DE VALK  
YACHT BROKERS

# FAURBY 393

## BROKER'S COMMENTS

The Faurby 393, a sweet-talk for the eyes of everyone who loves fine lines of sailing yachts. She is fast, sleek, low freeboarded with a nice, sharp bow. A wonderful example of a Baltic Sea boat. The joinery is made of massive teak wood. There is a central foldable dining table with a 3-seater settee on starboard side and a U-settee facing it on port. In the front a V-berth. The aft part of the boat features a small navigation station to starboard side with the heads. To port side is the galley and the door to the aft cabin. Buying this Faurby is acquiring a sailing diamond for sure!

*Reinier van der Wolf*

## SPECIFICATIONS

<b>Dimensions</b>	11.98 x 3.20 x 1.88 (m)	<b>Builder</b>	Faurby Yachts A/S
<b>Built</b>	1987	<b>Cabins</b>	2
<b>Material</b>	GRP	<b>Berths</b>	6
<b>Engine(s)</b>	1 x Volvo Penta D1-30F diesel	<b>Hp/Kw</b>	28.00 (hp), 20.61 (kw)
<b>Asking price</b>	€ 59.000 (VAT Paid)	<b>Lying</b>	at sales office

## CONTACT

<b>Sales office</b>	De Valk Monnickendam B.V.	<b>Telephone</b>	+31 (0)299 65 63 50
<b>Address</b>	Hoogedijk 6 1145 PM Katwoude NL	<b>E-mail</b>	monnickendam@devalk.nl

## DISCLAIMER

These particulars are given in good faith as supplied but cannot be guaranteed.



## GENERAL

Model	FAURBY 393
Type	sailing yacht
LOA (m)	11,98
LWL (m)	10,15
Beam (m)	3,20
Draft (m)	1,88
Air draft (m)	15,80
Headroom (m)	1,85
Year built	1987
Builder	Faurby Yachts A/S
Country	Denmark
Designer	Niels Peter Faurby
Displacement (t)	5,8
Ballast (tonnes)	2,4
Hull material	GRP
Hull colour	white
Hull shape	round-bilged
Keel type	fin keel
Superstructure material	GRP
Rubbing strake	aluminum
Deck material	GRP
Deck finish	teak
Superstructure deck finish	non-skid moulded in
Cockpit deck finish	teak
Window frame	aluminium
Window material	polycarbonate
Deckhatch	2
Fuel tank (litre)	aluminium - 40
Level indicator (fuel tank)	yes
Freshwater tank (litre)	stainless steel - 120



Blackwater tank (litre)	stainless steel
Blackwater tank extraction	deck extraction
Wheel steering	mechanical - Jefa Steering
Emergency tiller	yes
More info on hull	Underwater hull serviced and painted by Waterland Yacht Service in 2023 and new anode.

## ACCOMMODATION

Cabins	2
Berths	6
Interior	teak
Floor	teak and holly
Saloon	with L-shaped bench and longitudinal bench
Headroom saloon (m)	1.85
Heating	diesel ducted hot air - Webasto Air Top   Evo
Chart table	yes
Aft Cabin	Port side
Dinette to convert into berth	yes
Galley	with new kitchen faucet.
Countertop	corian
Sink	stainless steel
Cooker	calor gas - ENO   2 burner   pits   Zweiflamm
Fridge	Dometic
Water pressure system	electrical - 2023 new water pipes with filter and new electrical water pump
Owners cabin	v-bed - front   voor   Forne
Bed length (m)	Custom fit real matrass 20 cm thick - 2,00
Wardrobe	hanging and shelves
Bathroom	shared
Toilet	shared
Toilet system	manual - Jabsco
Wash basin	at the toilet



Guest cabin 1	double bed
Bed length (m)	2,00
Wardrobe	hanging and shelves
Extra info	New Moskito nets for owners cabin and salon in 2023

## MACHINERY

No of engines	1
Make	Volvo Penta
Type	D1-30F
HP	28
kW	20.61
Fuel	diesel
Year installed	2009
Engine hours	1421
Engine cooling system	freshwater heat exchanger
Drive	sail-drive
Engine controls	bowden cable - Seastar (2023)
Exhaust	watercooled
Propeller type	folding
Propeller blades	Double   dubbel   Doppel
Manual bilge pump	in cockpit - RM69
Electrical installation	12   220 v
Batteries	2 x
Start battery	1 x (2024)
Service battery	1 x (2024)
Battery charger	Waeco Mobitronic
Shorepower	with cable
Extra info	Engine service 2023

## NAVIGATION

Compass	Plastimo - (steering position) Silva - (at entrance saloon)
---------	---



Depth sounder	Raymarine ST60 Depth
Log	Raymarine ST60 Speed
Windset	Raymarine ST60 Wind
VHF	Icom 423 (2023)
VHF handheld	in cockpit - Icom (2023)
Autopilot	Raymarine ST5000+ Autopilot
Plotter	mounted in Scanstrut Scanpot - B&G Zeus 3S (2020)
AIS transceiver	AIS700 Class B
Navigation lights	with deck mast light

## EQUIPMENT

Sprayhood	yes
Cockpit table	yes
Boarding ladder	stainless steel
Deck shower	in cockpit
Anchor	Delta
Anchor chain	50 m
Windlass	electrical - Lewmar *
Sea railing	wire
Grab rail (superstructure)	teak
Pushpit	stainless steel
Pulpit	stainless steel
Life raft	container - Plastimo Transocean (2023)
Life raft (pers)	4
Lifebuoy	2023
Safety lines on deck	New jack stays by Waterland Yacht Service 2023
Fenders	yes
Mooring lines	yes
Radio-cd player	with bluetooth connection Sony
Cockpit speakers	2 x
Speakers in salon	2 x



Clock - barometer	yes
Fire extinguisher	yes
Extra info	* Windlass operable from cockpit and by remote control on forward of deck.

## RIGGING

Rigging	sloop
Standing rigging	Rod - 2023 (Waterland Yacht service)
Brand mast	John mast
Material mast	aluminium
Spreaders	Double   dubbel   doppel
Keel stepped mast	yes
Mainsail	36 m2 (2018)
Mainsail cover	yes
Genoa	at the sailmaker 2023 and has been serviced   Dynema Genoa Hallyard 2023   Dynema Genoa Sheet 2022 - 34 m2 (2019)
Genoa furler	Harken
Spinnaker	unused, 2020 - Elvstroem 90m2
Reefing System	quick-one-line-reefing
Backstay adjuster	mechanical
Boomvang	mechanical and tackle
Secondary sheet winch	2x Andersen Two Speed 46
Genoa sheetwinches	2x Andersen Two Speed 46 ST
Halyard winches	1x Andersen 28 ST 1x Andersen 28 Two Speed (2023)
Spi-pole	yes



# FAURBY 393



# FAURBY 393



# FAURBY 393



# FAURBY 393







# FAURBY 393





# FAURBY 393



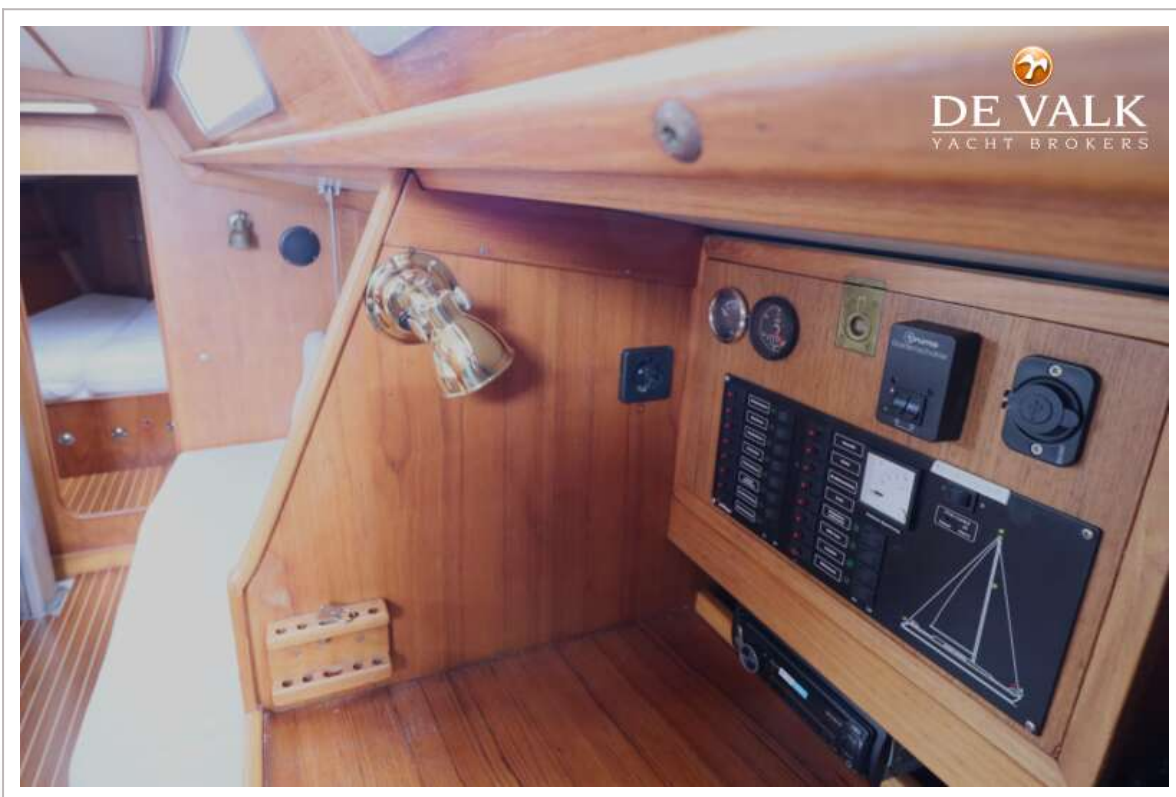
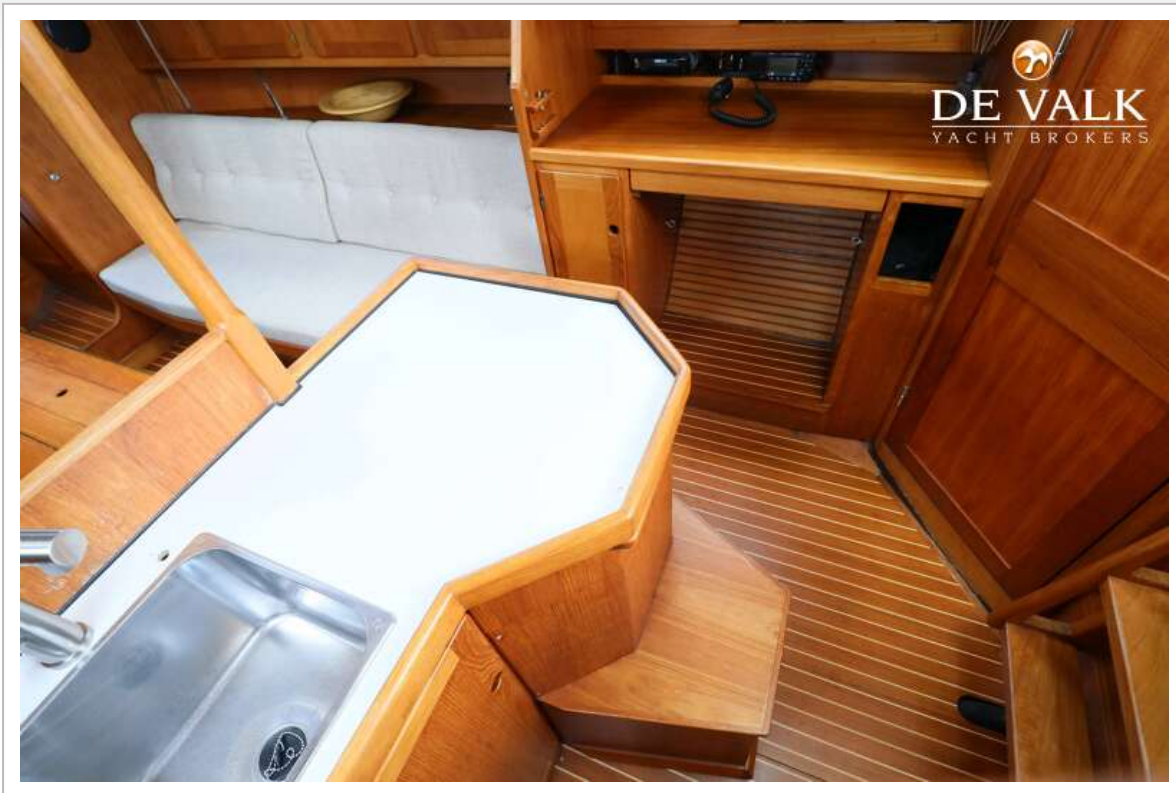
# FAURBY 393



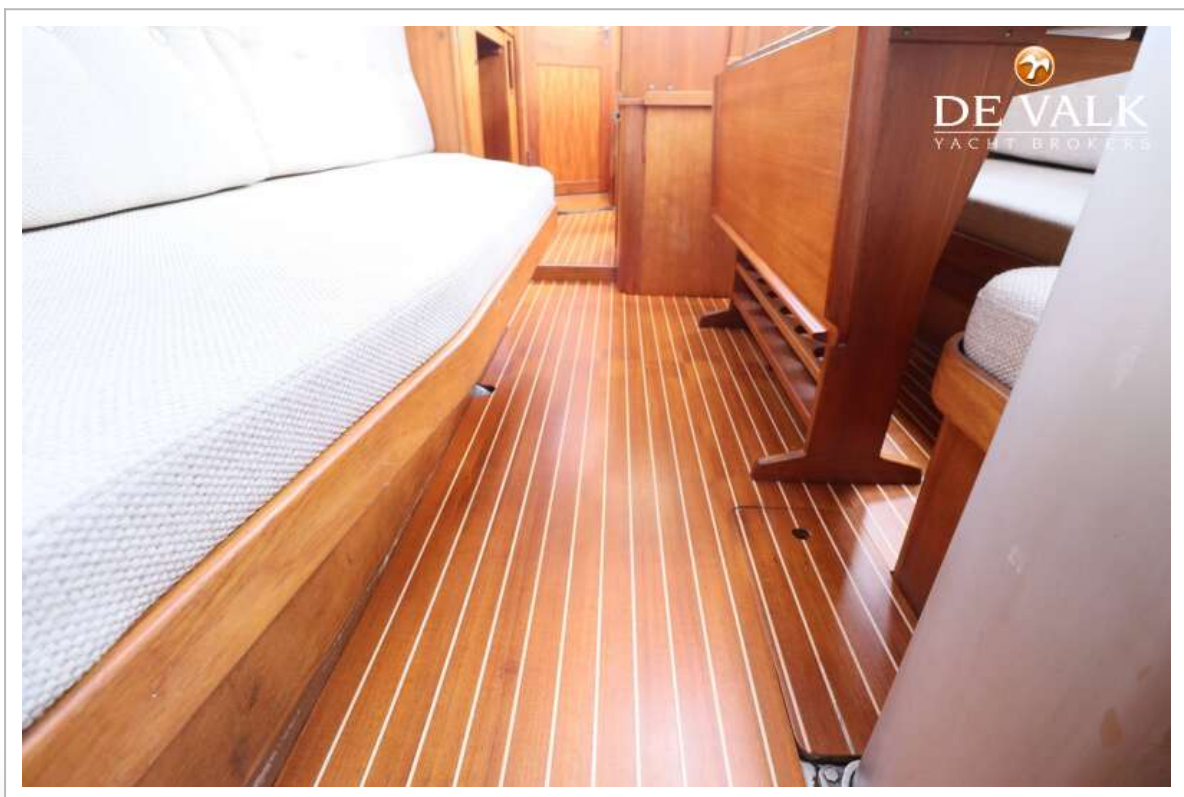
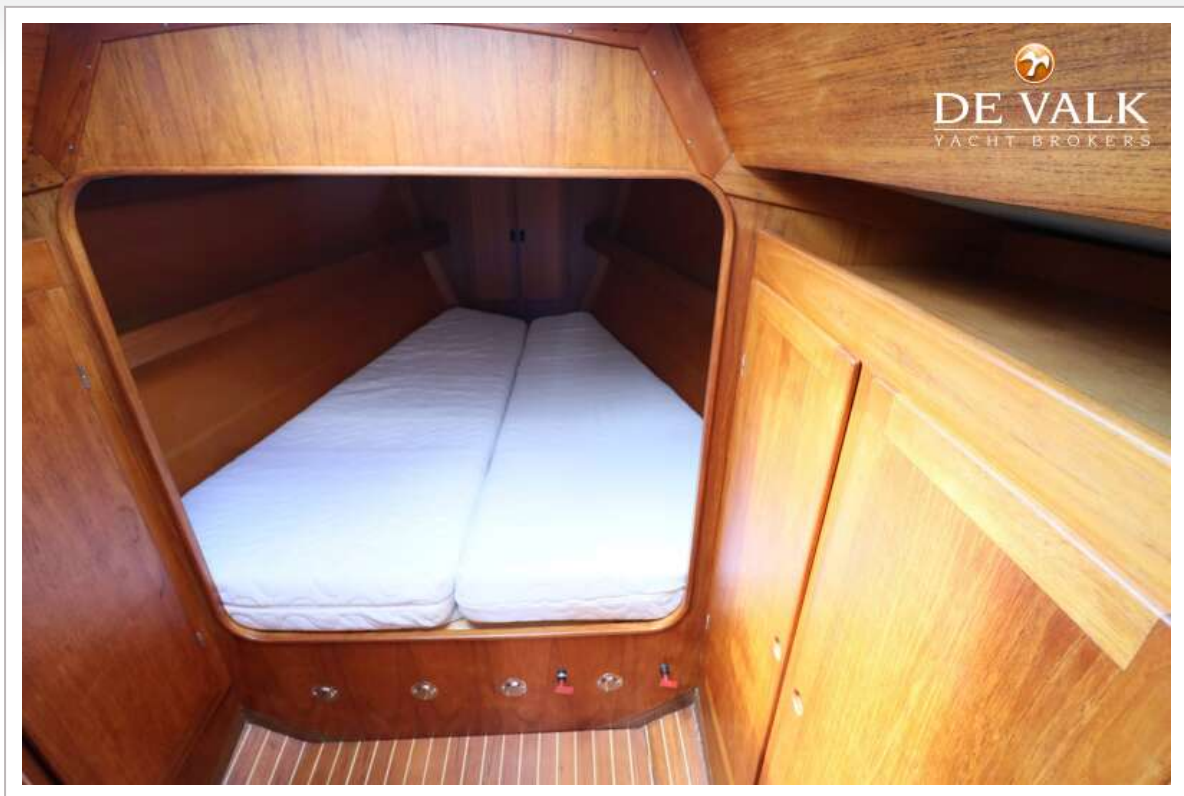
# FAURBY 393



# FAURBY 393



## FAURBY 393



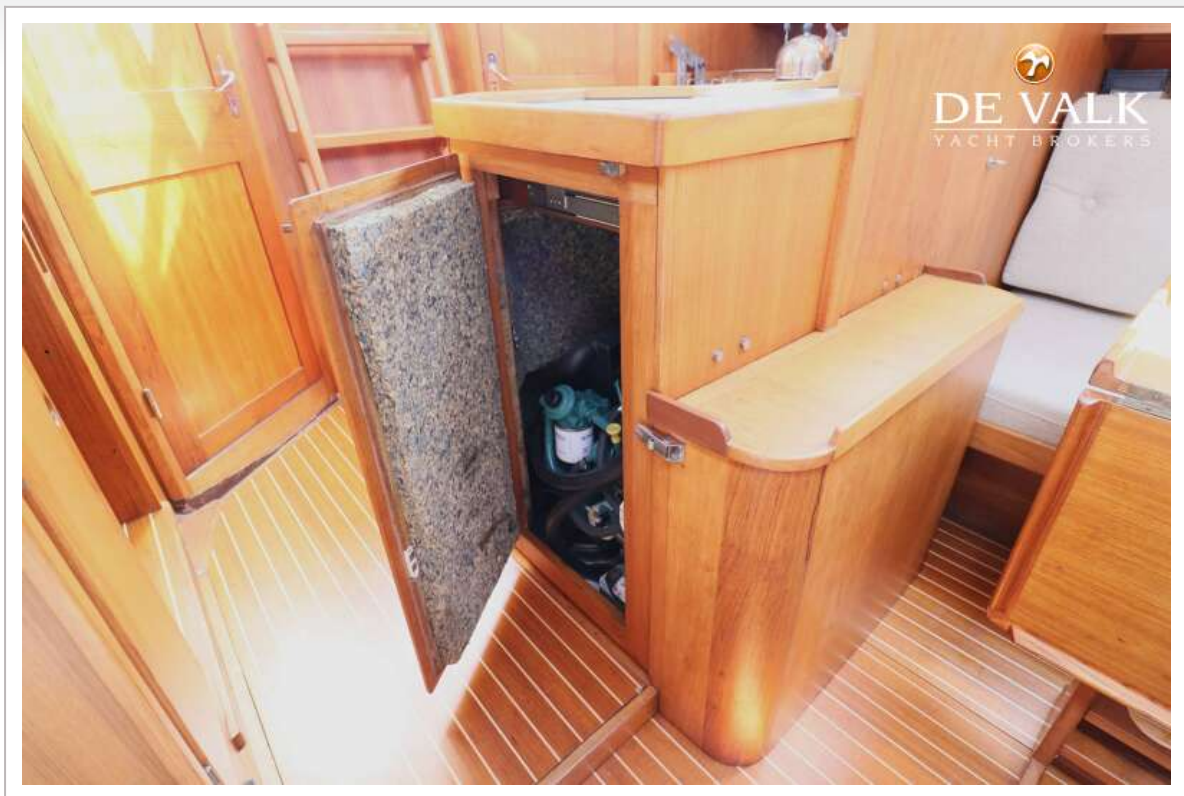
## FAURBY 393



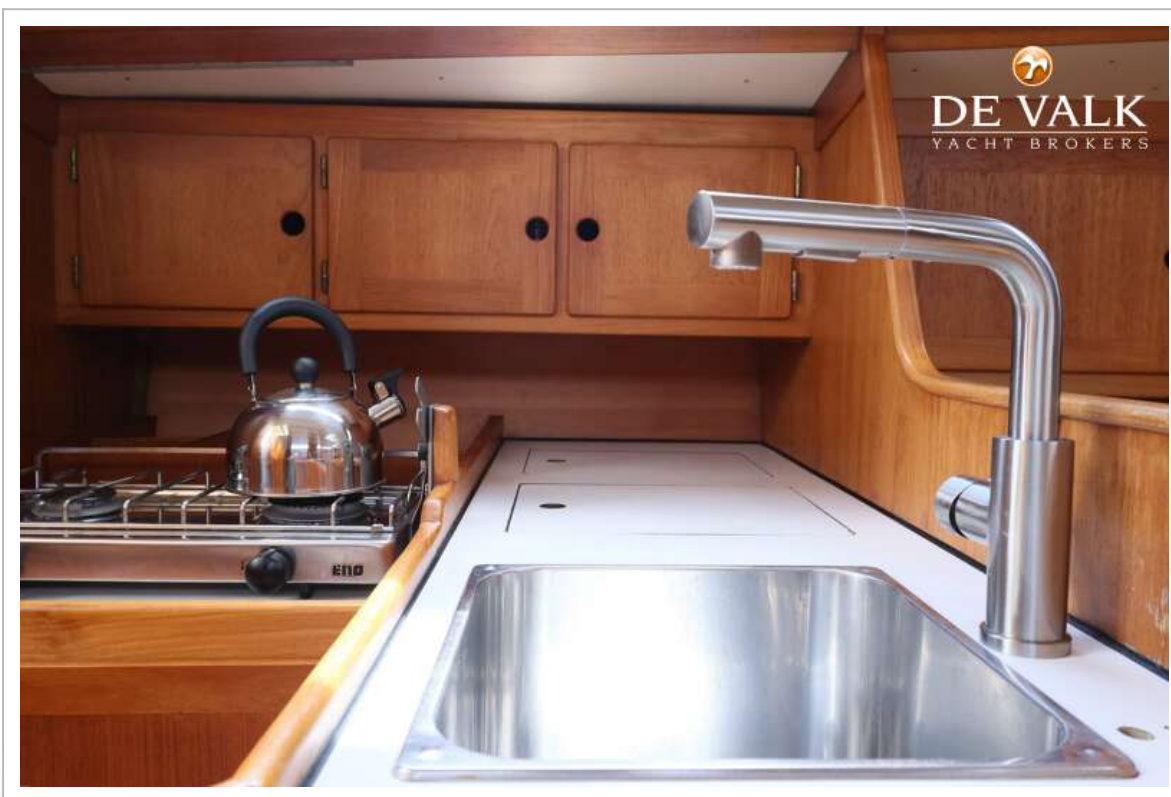
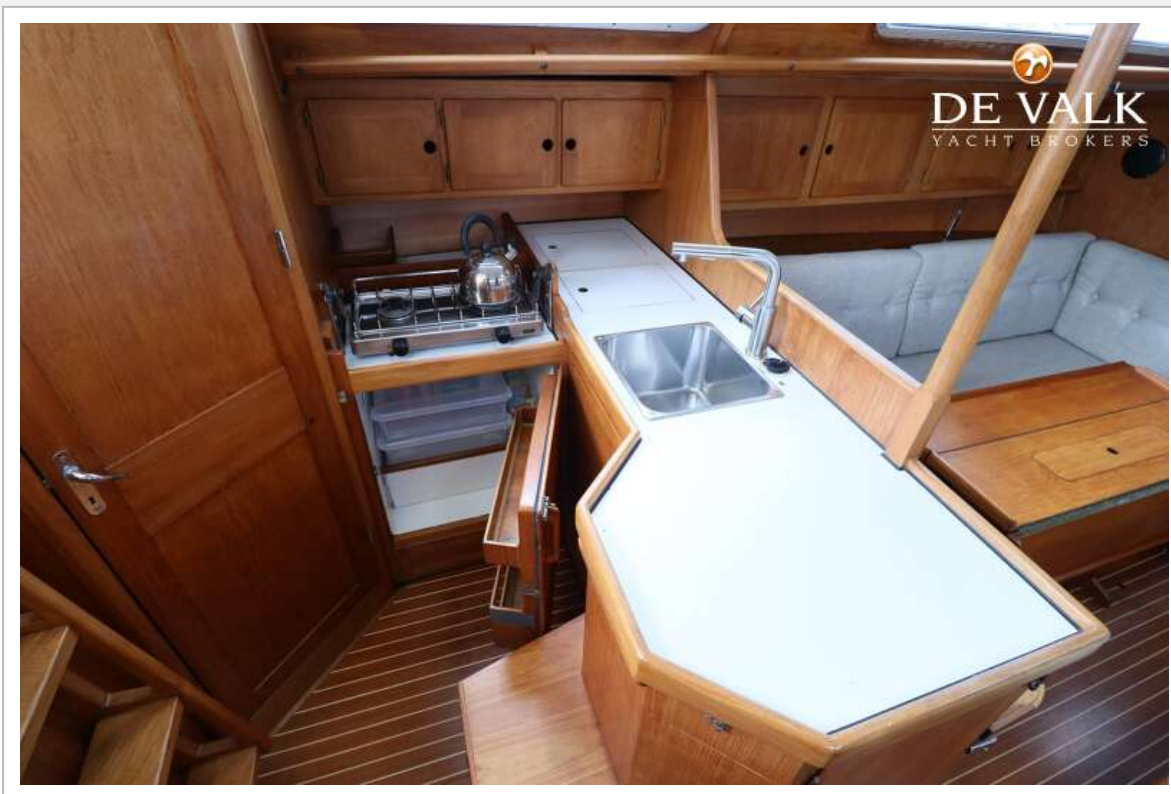
# FAURBY 393



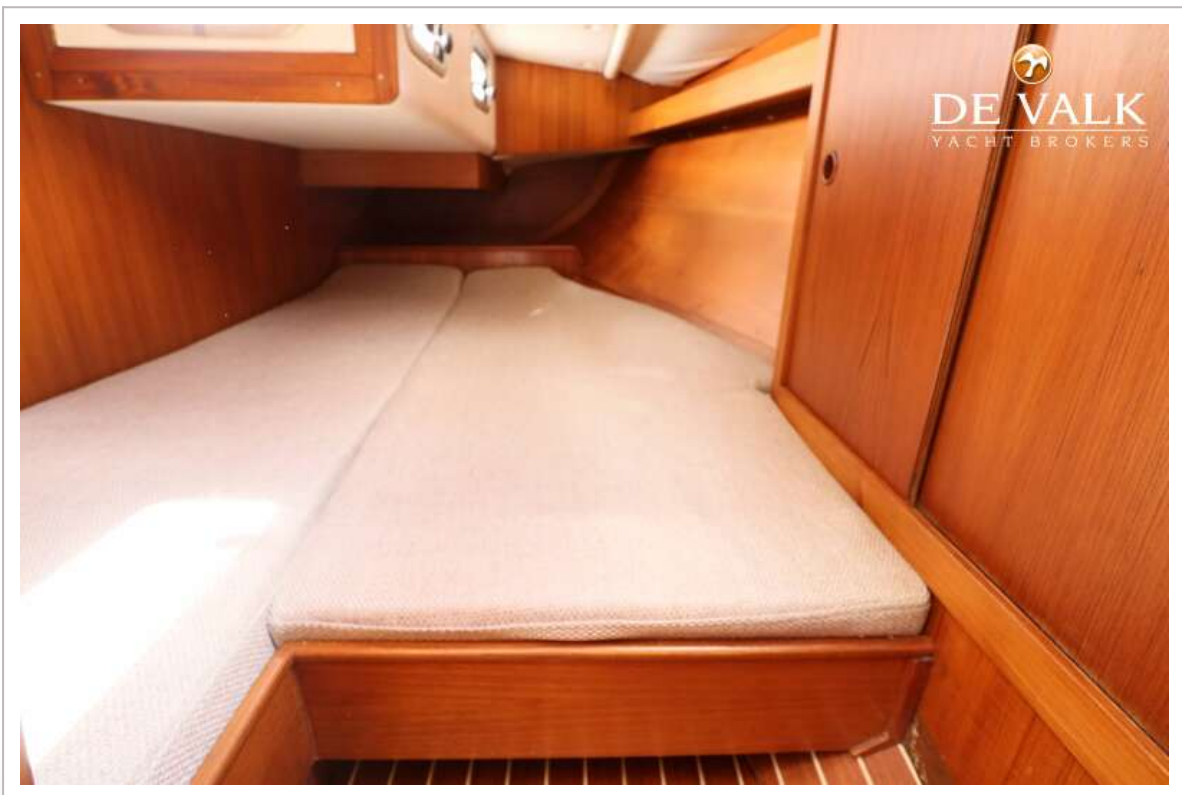
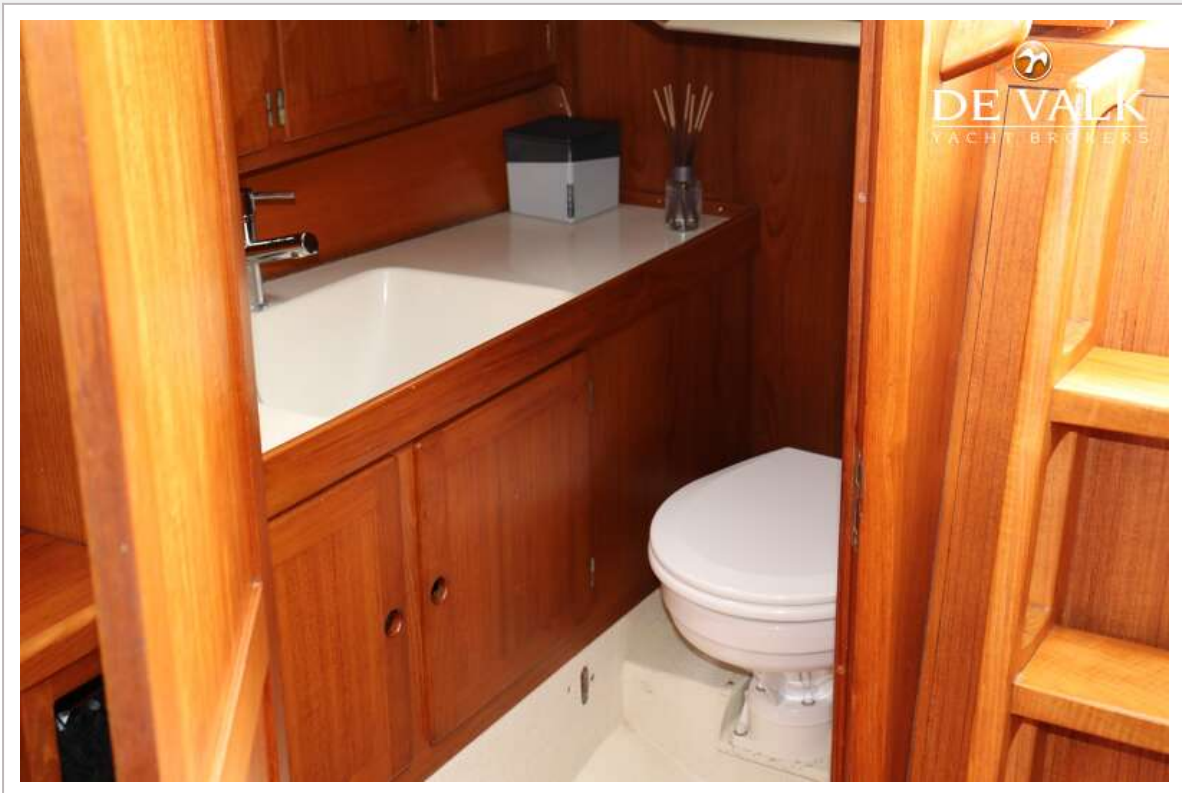
# FAURBY 393



# FAURBY 393



## FAURBY 393



# FAURBY 393

