



DE VALK
YACHT BROKERS



BEKEBREDE 1500 TRAWLER



DE VALK
YACHT BROKERS

BEKEBREDE 1500 TRAWLER

BROKER'S COMMENTS

Straight from first owner this beautiful Bekebrede Trawler 1500. She is in almost new condition and is always inside. Due to its well-designed layout and size is ideal for long stays. Can be delivered exclusive of VAT, the asking price includes VAT.

Jan de Vries

SPECIFICATIONS

Dimensions	14.98 x 4.85 x 1.35 (m)	Builder	casco: S. Heijnsman Stavoren
Built	2004	Cabins	3
Material	Steel	Berths	5
Engine(s)	1 x Perkins Sabre M225TI diesel	Hp/Kw	225.00 (hp), 165.60 (kw)
Asking price	sold (VAT)	Lying	contact Sneek

CONTACT

Sales office	De Valk Sneek	Telephone	+31 515 42 80 30
Address	Zwolsmanweg 7 8606 KC Sneek The Netherlands	E-mail	sneek@devalk.nl

DISCLAIMER

These particulars are given in good faith as supplied but cannot be guaranteed.



BEKEBREDE 1500 TRAWLER

GENERAL

Model	BEKEBREDE 1500 TRAWLER
Type	motor yacht
LOA (m)	14,98
LWL (m)	13,49
Beam (m)	4,85
Draft (m)	1,35
Air draft (m)	8,10
Air draft min (m)	4,20
Headroom (m)	1,92
Year built	2004
Launched	built has started in 2001, launched 2004
Builder	Casco: S. Heijnsman Stavoren
Country	The Netherlands
Designer	M. Bekebrede
Displacement (t)	34
CE norm	A
Hull material	steel
Hull colour	blue
Hull shape	round-bilged
Keel type	long keel
Bilge keels	yes
Superstructure material	steel
Rubbing strake	stainless steel
Deck material	steel
Deck finish	cork
Cockpit deck finish	cork
Dorades	yes
Window frame	aluminium
Window material	double glazing 8 mm
Deckhatch	2x Gebo



BEKEBREDE 1500 TRAWLER

Portholes	yes
Insulation	foam
Mast can be lowered	hydraulic
Steadying sail with mast	yes
Fuel tank (litre)	steel 2 X 550 Ltr. for main engine 2 x 500 Ltr.
Fuel tank 2 (litre)	steel 2x 350 Ltr. for red diesel for generator and heating
Level indicator (fuel tank)	yes
Fuel daytank (litre)	steel 1 X 30 Ltr.
Freshwater tank (litre)	stainless steel 1500 Ltr.
Blackwater tank (litre)	steel 500 Ltr.
Greywater tank (litre)	stainless steel 70 Ltr.
Wheel steering	powersteer
Inside helm position	yes
Emergency tiller	yes
More info on hull	Klinker build
More info on paintwork	complete professional painted in 2012
Extra info	side sliding doors and teak aft doors

ACCOMMODATION

Cabins	3
Berths	5
Interior	yes
Floor	cork
Headroom saloon (m)	1,92 m.
Heating	central hot water Kabola HR400 Combi
Air-conditioning	reverse cycle airco In ownerscabin
Navigation center	yes
Chart table	yes
Opening door to cockpit	Teak
Galley	yes
Countertop	corian



BEKEBREDE 1500 TRAWLER

Sink	stainless steel
Cooker	induction Bosch 4 burner
Extractor	yes
Fridge	Kissmann 146 Ltr.
Freezer	Kissmann 110 Ltr.
Hot water system	on central heating
Water pressure system	electrical SensorMax Pump
Owners cabin	French bed
Bed length (m)	2,00 Mtr. x 1,60 Mtr.
Wardrobe	hanging/drawers/shelves Walk in closet
Bathroom	en suite
Toilet	en suite
Toilet system	electric Tecma
Wash basin	in the bathroom
Shower	en suite
Guest cabin 1	v-bed
Bed length (m)	1,95 Mtr. X 0,95 Mtr.
Wardrobe	hanging and drawers
Bathroom	shared
Toilet	shared
Toilet system	electric Tecma
Wash basin	in the bathroom
Shower	shared
Guest cabin 2	single bed
Bed length (m)	2,15 Mtr. X 0,75 Mtr.
Wardrobe	shelves
Bathroom	shared
Toilet	shared
Toilet system	electric Tecma
Wash basin	in the bathroom
Shower	shared
Washing machine	Bauknecht WTE 1732 W



BEKEBREDE 1500 TRAWLER

Central vacuum cleaner	yes
Extra info	Large storage under aftdeck

MACHINERY

No of engines	1
Make	Perkins Sabre
Type	M225TI
HP	225
kW	165.60
Fuel	diesel
Year installed	2004
Maximum speed (kn)	10
Cruising speed (kn)	7,5
Engine hours	2726,2
Engine cooling system	freshwater heat exchanger
Drive	shaft
Engine controls	electrical Morse
Gearbox	hydraulic New Age
Bowthruster	hydraulic
Sternthruster	hydraulic
Gearbox	yes
Exhaust	watercooled
Thrust bearing	yes
Propeller type	fixed
Propeller blades	5 X
Propeller shaft material	stainless steel
Shaft lubrication	water
Manual bilge pump	yes
Electric bilge pump	3x
Electrical installation	24/240 V.
Generator	wet exhaust Mastervolt Whisper 12000 Ultra



BEKEBREDE 1500 TRAWLER

Batteries	yes
Start battery	2x 150 Ah. AGM Victron
Service battery	6x 200 Ah. Gel Sonnenschein
Generator battery	102 Ah.
Battery charger	Mastervolt Mass 24/100
Inverter	Mastervolt Mass Sine 24/2500
Diode battery combiners	yes
Shorepower	with cable
Insulation transformer	Mastervolt

NAVIGATION

Electric compass	yes
Depth sounder	Raymarine ST60
Log	Raymarine ST60
VHF	1x Raymarine 230E 1x Raymarine 215E
Autopilot	Raymarine ST7001+
Rudder angle indicator	Raymarine ST60
GPS	Raymarine
Radar/GPS/plotter	Raymarine RL80C
Weather receiver	Philips RC348
Searchlight	Jabsco 135SL

EQUIPMENT

Cockpit chairs	yes
Boarding ladder	yes
Transom door	yes
Deck shower	yes
Anchor	Pool 55 Kg.
Anchor chain	50 m.
Windlass	hydraulic Vetus
Deck wash	yes



BEKEBREDE 1500 TRAWLER

Dinghy	inflatable Bombard
Outboard	Yamaha 8 Pk
Deck crane	hydraulic Almar
Sea railing	stainless steel
Grab rail (superstructure)	yes
Railing side opening gates	yes
Lifebuoy	yes
Wiper	5x
Horn	yes
Fenders	yes
Mooring lines	yes
TV	yes
TV receiver	KVH Tracvision 4
Radio-cd player	Philips RC348
Auto extinguisher system	yes



BEKEBREDE 1500 TRAWLER



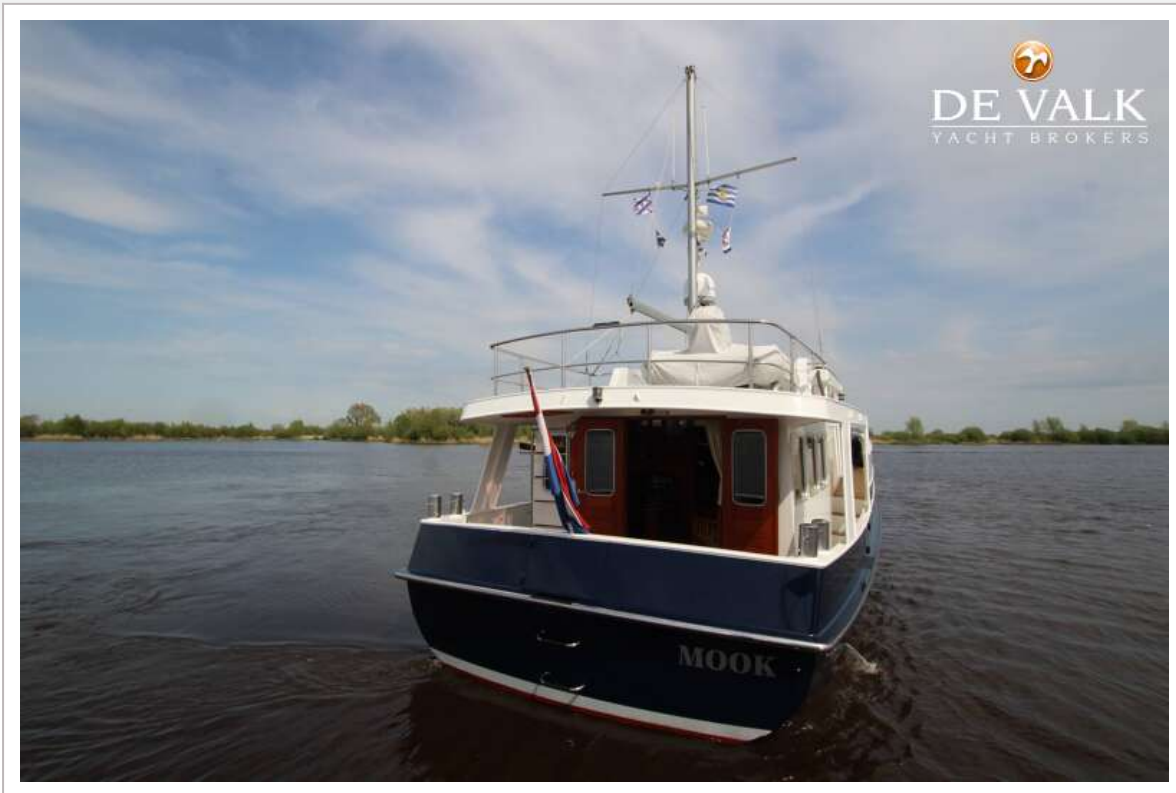
BEKEBREDE 1500 TRAWLER



BEKEBREDE 1500 TRAWLER



BEKEBREDE 1500 TRAWLER



BEKEBREDE 1500 TRAWLER



BEKEBREDE 1500 TRAWLER



BEKEBREDE 1500 TRAWLER



BEKEBREDE 1500 TRAWLER



BEKEBREDE 1500 TRAWLER



BEKEBREDE 1500 TRAWLER



BEKEBREDE 1500 TRAWLER



BEKEBREDE 1500 TRAWLER



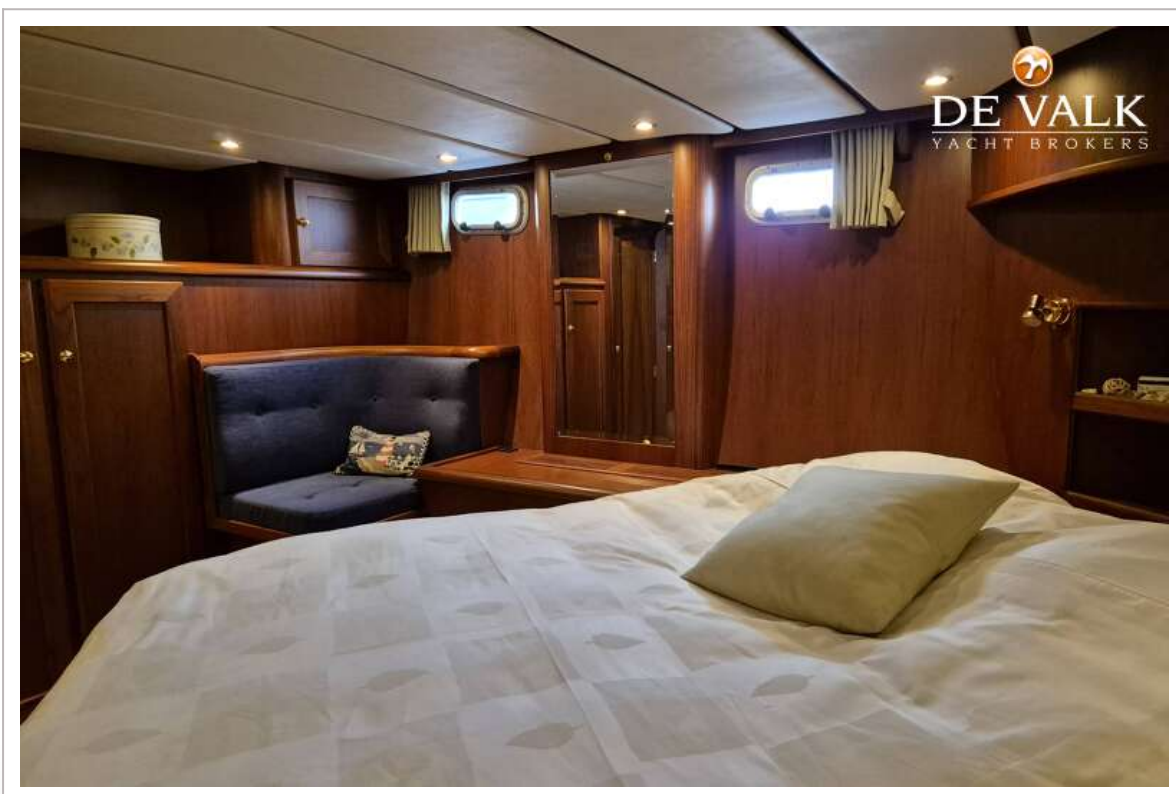
BEKEBREDE 1500 TRAWLER



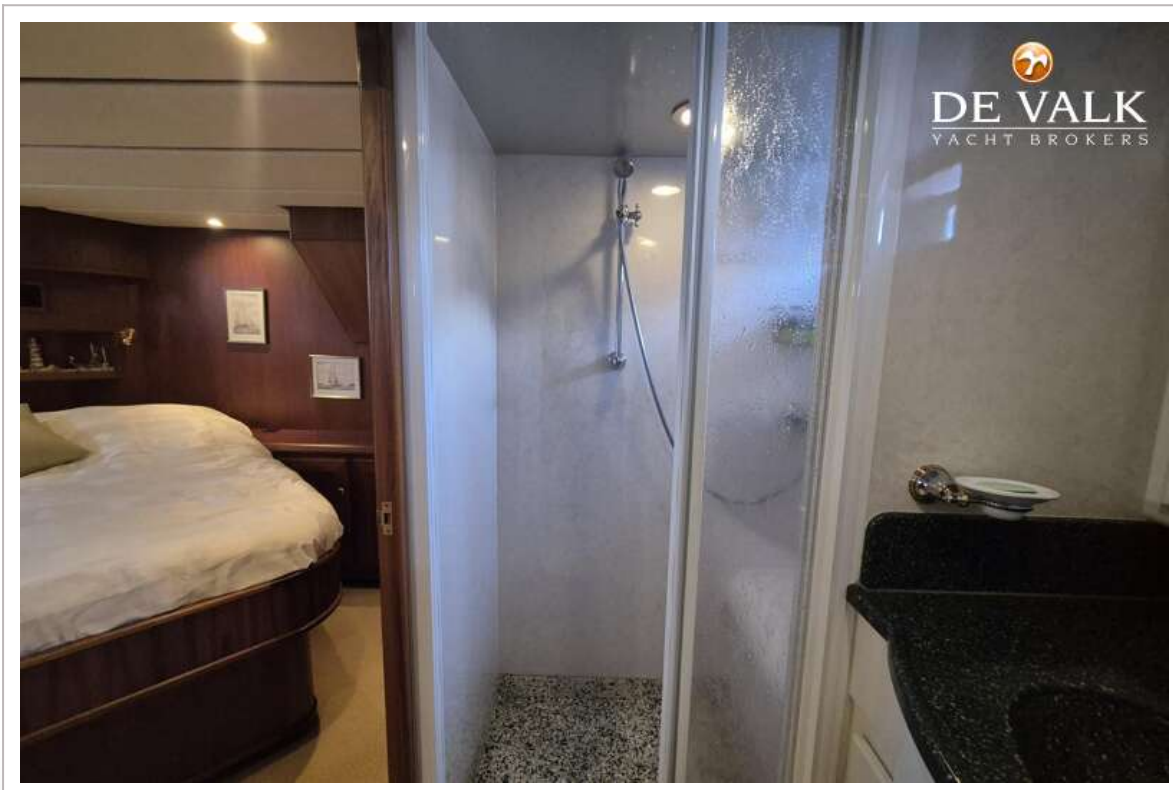
BEKEBREDE 1500 TRAWLER



BEKEBREDE 1500 TRAWLER



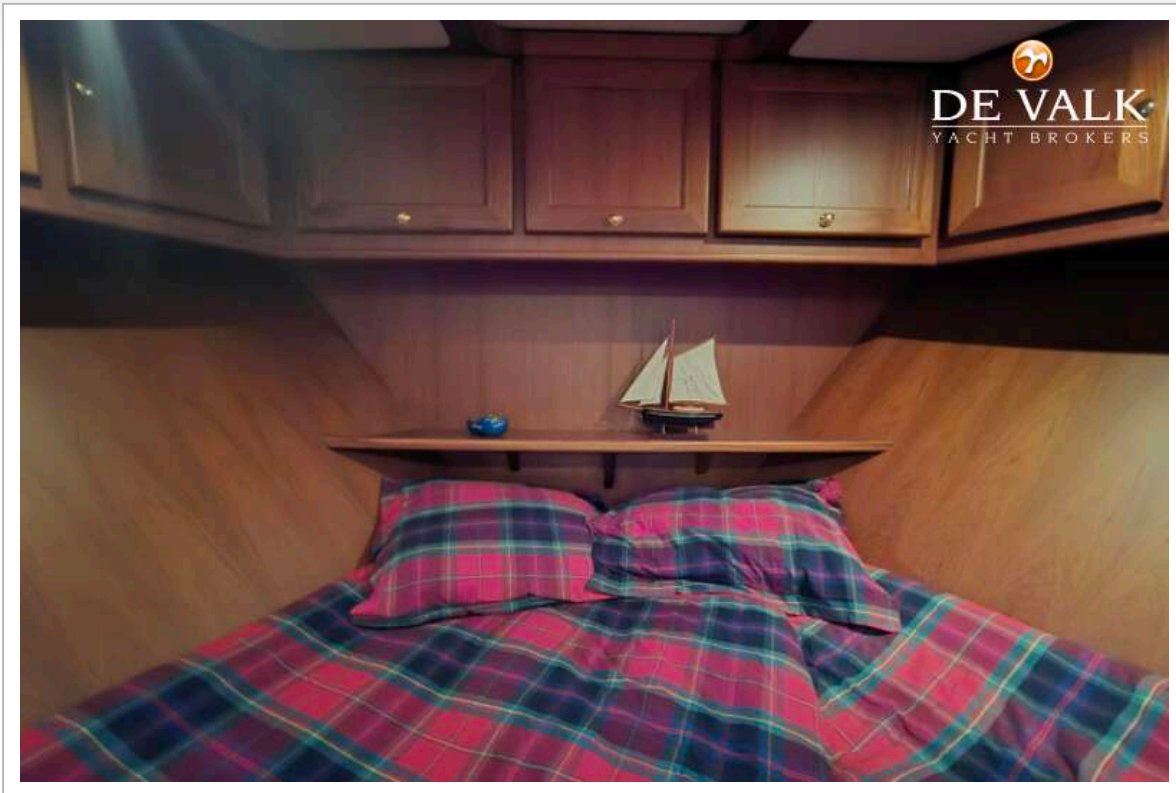
BEKEBREDE 1500 TRAWLER



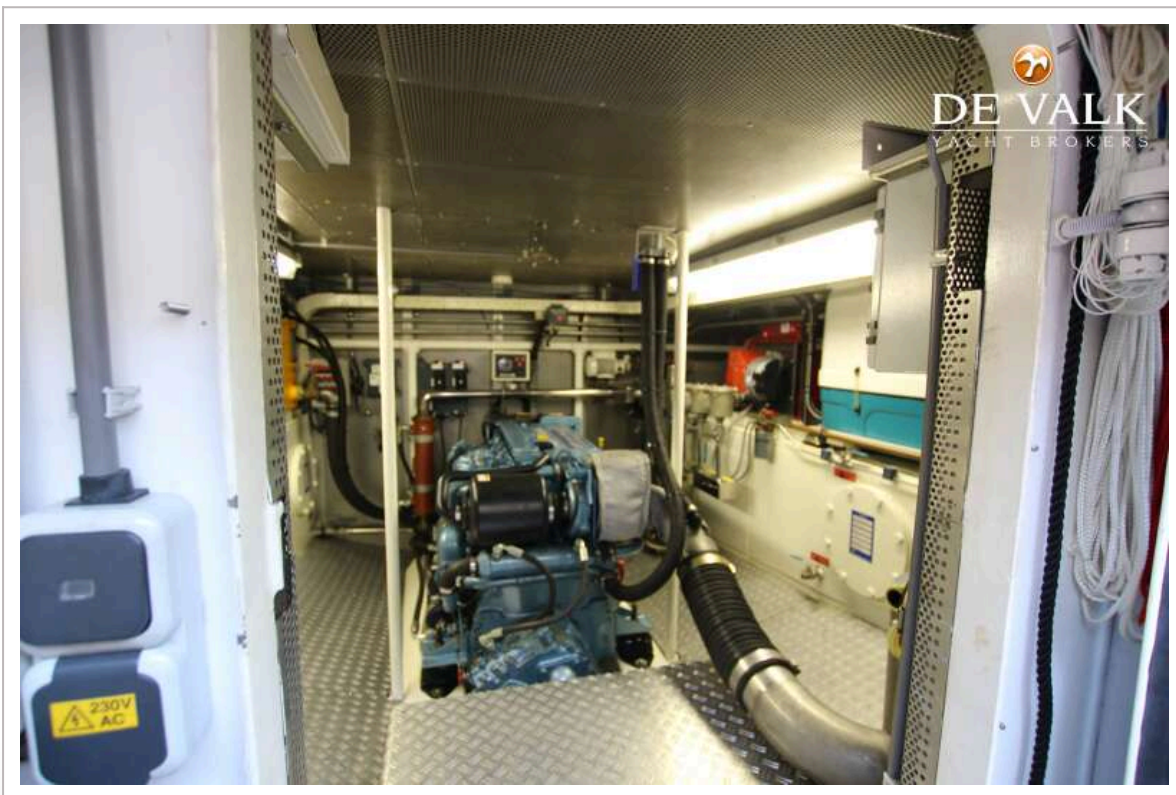
BEKEBREDE 1500 TRAWLER



BEKEBREDE 1500 TRAWLER



BEKEBREDE 1500 TRAWLER



BEKEBREDE 1500 TRAWLER

