



BAVARIA 36-3



BROKER'S COMMENTS

Well maintained Bavaria 36 with three cabins. This Bavaria 36-3 is a complete ship with teak in the cockpit, a Webasto heating and a boiler and ready to sail for a new owner. This Bavaria 36-3 is located in Zeeland on the Grevelingenmeer and can only be viewed by appointment. You can make an appointment through our office in Sint Annaland.

Jan-Ward van Dantzig

SPECIFICATIONS

Dimensions	11.40 x 3.60 x 1.60 (m)	Builder	Bavaria Yachtbau GMBH
Built	2002	Cabins	3
Material	GRP	Berths	8
Engine(s)	1 x Volvo Penta MD 2030-D BT diesel	Hp/Kw	29.00 (hp), 21.34 (kw)
Asking price	sold (VAT)	Lying	elsewhere / Not at sales office

CONTACT

Sales office	De Valk Sint Annaland B.V.	Telephone	+31 (0)166 601 000
Address	Koelhuisweg 4 4697 RM Sint Annaland NL	E-mail	sintannaland@devalk.nl

DISCLAIMER

These particulars are given in good faith as supplied but cannot be guaranteed.



GENERAL

Model	BAVARIA 36-3
Type	sailing yacht
LOA (m)	11,40
LWL (m)	9,39
Beam (m)	3,60
Draft (m)	1,60
Air draft (m)	16,50
Headroom (m)	1,88
Year built	2002
Launched	2003
Builder	Bavaria Yachtbau GMBH
Country	Germany
Designer	J & J Design
Displacement (t)	5,5
Ballast (tonnes)	cast iron 1,6
CE norm	A
Hull material	GRP
Hull colour	white With a blue striping
Hull shape	round-bilged
Keel type	fin keel
Superstructure material	GRP
Rubbing strake	aluminum
Deck material	GRP
Deck finish	non-skid moulded in
Superstructure deck finish	non-skid moulded in
Cockpit deck finish	teak
Antifouling (year)	June 2024
Dorades	1 x
Window frame	aluminium
Window material	polycarbonate



Deckhatch	Lewmar (with small cracks) and rollo's
Portholes	aluminium Lewmar (new perpex windows in 2018)
Fuel tank (litre)	polyethylene 150
Level indicator (fuel tank)	yes
Freshwater tank (litre)	polyethylene 300 (2x 150L)
Level indicator (freshwater)	yes
Wheel steering	cable steering Whitlock pedestal with leather covered steering wheel
Emergency tiller	yes
Extra info	Cover over pedestal and steering wheel (New in 2022)
Extra info	Rudder bearing replaced in 2011
Extra info	Steering wheel lock is not present

ACCOMMODATION

Cabins	3
Berths	8
Interior	mahogany
Floor	woodprint "Teak and holly"
Saloon	yes
Headroom saloon (m)	1.88
Heating	diesel ducted hot air Webasto
Chart table	On starboard side
Aft Cabin	2 x
Dinette	yes
Galley	On port side - Headroom : 1,81 m
Countertop	plastic Blue
Sink	stainless steel 2 x
Cooker	calor gas 2 burner
Oven	yes
Fridge	Top loader with a compressor
Hot water system	220V + engine Boiler



Water pressure system	electrical
Owners cabin	v-bed In front cabin - Headroom : 1,77 m
Bed length (m)	2,03 x 1,70
Wardrobe	hanging and shelves
Bathroom	shared Headroom : 1,77 m
Toilet	shared In the bathroom
Toilet system	manual Jabsco
Wash basin	in the bathroom
Shower	shared In the bathroom
Extra info	Slatts under the mattresses (New in 2020) in the front cabin
Guest cabin 1	double bed Port side aft - Headroom : 1,88 m
Bed length (m)	2,06 x 1,40
Wardrobe	hanging and shelves
Extra info	Mattresses renewed in 2020 in port side aft cabin
Guest cabin 2	double bed Starboard aft - Headroom : 1,88 m
Bed length (m)	2,06 x 1,40
Wardrobe	hanging and shelves
Extra info	The original blue upholstery in the salon is slightly faded
Extra info	LED interior lighting & LED chart reading light at chart table

MACHINERY

No of engines	1
Make	Volvo Penta
Type	MD 2030-D BT
HP	29
kW	21.34
Fuel	diesel
Year installed	2002
Maximum speed (kn)	7
Cruising speed (kn)	6
Consumption (l/hr)	2,8



Engine cooling system	freshwater heat exchanger
Drive	sail-drive
Saildrive seal	New in 2012
Engine controls	bowden cable
Exhaust	watercooled New exhaust elbow (March 2024)
Propeller type	feathering Max-Prop (New in 2017)
Propeller blades	2
Manual bilge pump	yes
Electric bilge pump	yes
Electrical installation	12 & 220 Volt
Start battery	1 x 60 Ah Sportline Marine (New in May 2018)
Service battery	2 x 165 Ah (New in December 2018)
Battery charger	Mastervolt Chargemaster 12/25-3 acculader (New in June 2019)
Solar panel	20 Watt with a MPPT-Solar-charge-control
Diode battery combiners	New in June 2019
Shorepower	with cable
Extra info	March 2024 : Engine maintenance & intern cooling system cleaned
Extra info	March 2024 : New air filter & sea water pump overhauled
Extra info	The waterlock from the engine exhaust leaks & needs replacement

NAVIGATION

Compass	Plastimo Olympic 135 on the pedestal
Depth sounder/log	Raymarine ST60 Tridata
Windset	Raymarine ST60+ Wind (New in 2016)
VHF	Navman VHF 7100 with a Mic (at chart table)
Navigation lights	Steaming and deck lights are not functioning

EQUIPMENT

Sprayhood with grab rail	Dark blue (windows renewed in 2022)
--------------------------	-------------------------------------



Cockpit cover	Dark blue
Cockpit table	Teak (foldable & hanging on front side of pedestal)
Bathing platform	Non-skid moulded in
Boarding ladder	stainless steel
Deck shower	With hot and cold water
Anchor	Kobra
Anchor chain	With chain and rope
Outboard support	On the pushpit
Sea railing	wire Double wired
Grab rail (superstructure)	stainless steel
Pushpit	Stainless steel
Pulpit	Stainless steel
Lifebuoy	Marinepool rescue harness
Radar reflector	Tri-Lens (2006)
Fenders	yes
Mooring lines	yes
Radio-cd player	Alpine
Speakers in salon	2 x Kenwood
Clock - barometer	Altitude
Fire extinguisher	2 x
Latest extinguisher survey	Need to be checked/renewed
Extra info	6 x Aluminium clamp (so also amidships)

RIGGING

Rigging	fractional 19/20
Standing rigging	wire (2002)
Brand mast	Seldén
Material mast	aluminium
Spreaders	2 x set
Mainsail	2012 : Gaastra: DynamiX Custom Axis Laminate / Pentex (29,61m2)



Mainsail cover	Dark Blue Lazy-Bag with Lazy-Jacks
High aspect	2009 : Sail Select : Offshore Racing High Performance Premium Dacron Cross-cut 111% High Aspect Furling Jib with foam in Luff (26,9m2 - 8Oz. US)
Genoa	2002 : Elvstrom : 150% Furling Genoa
Genoa furler	Furlex 200S
Gennaker	2007 : De Vries Sails : Gennaker with a snuffer
Reefing System	quick-one-line-reefing
Backstay adjuster	tackle
Boomvang	tackle
Genoa sheetwinches	2 x Harken 40 ST
Halyard winches	2 x Harken 16 ST
Extra info	Spare : dacron Elvstrom mainsail (2002)







BAVARIA 36-3



BAVARIA 36-3



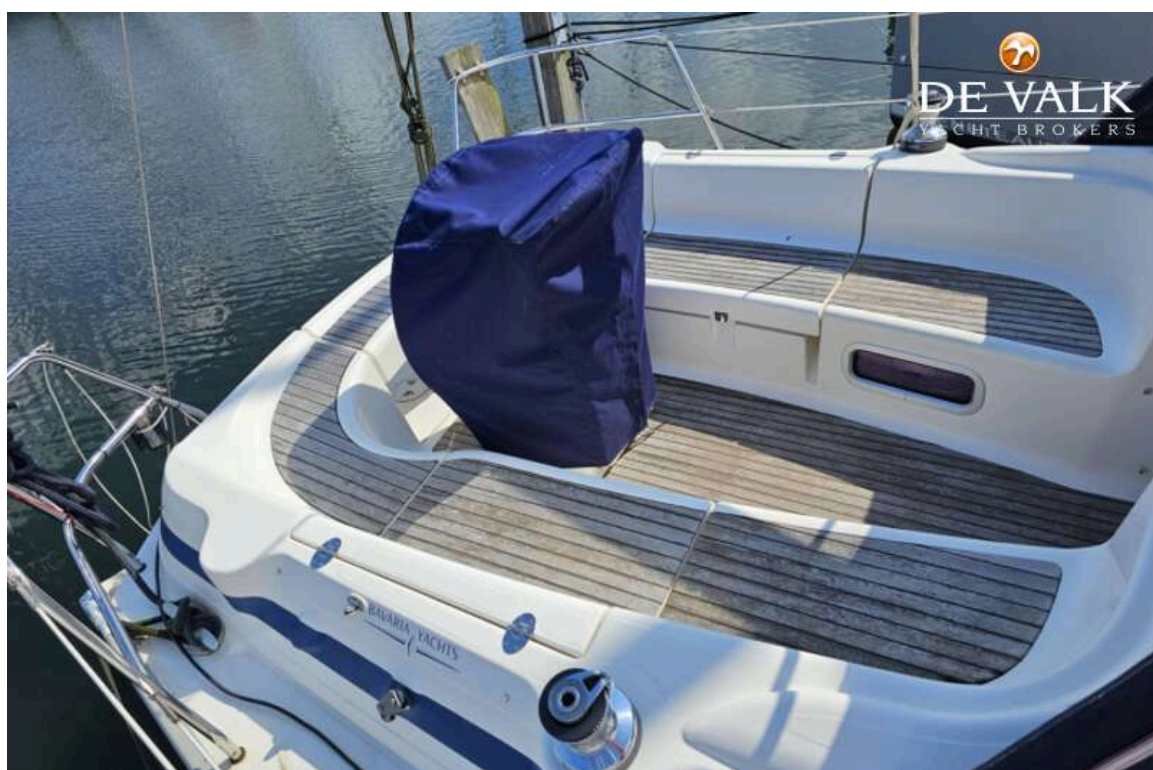
BAVARIA 36-3



BAVARIA 36-3



BAVARIA 36-3



BAVARIA 36-3





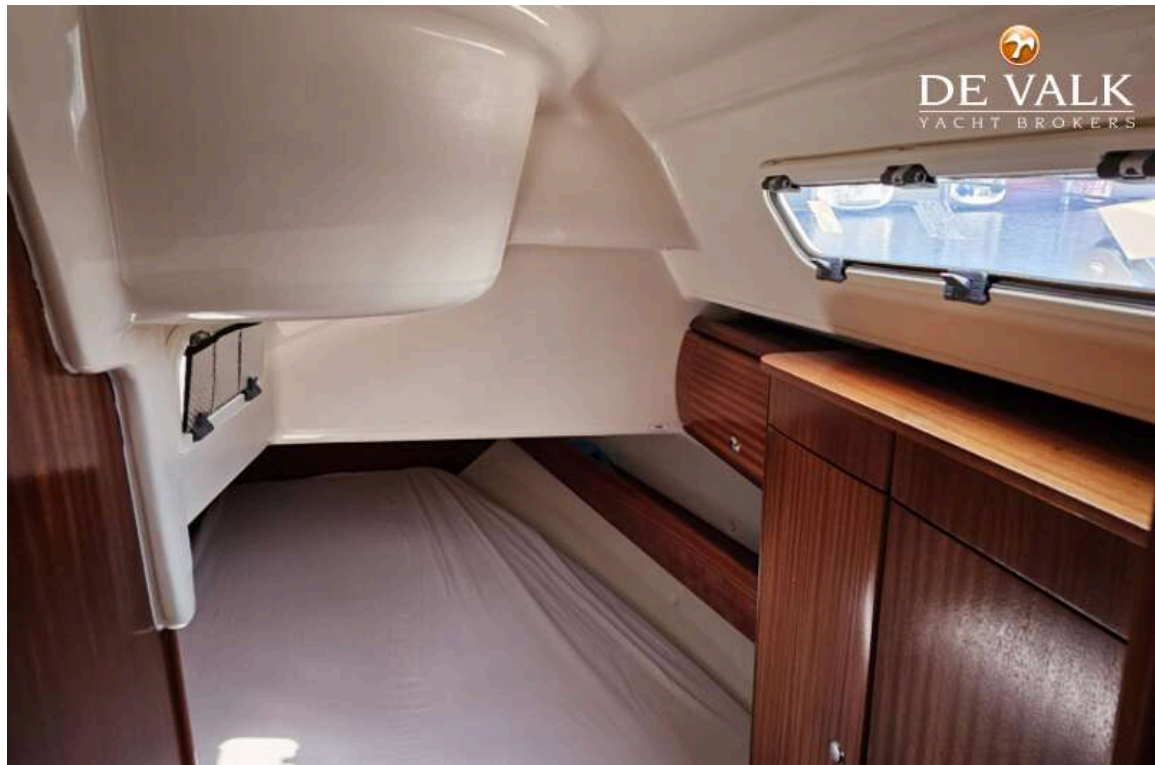
BAVARIA 36-3



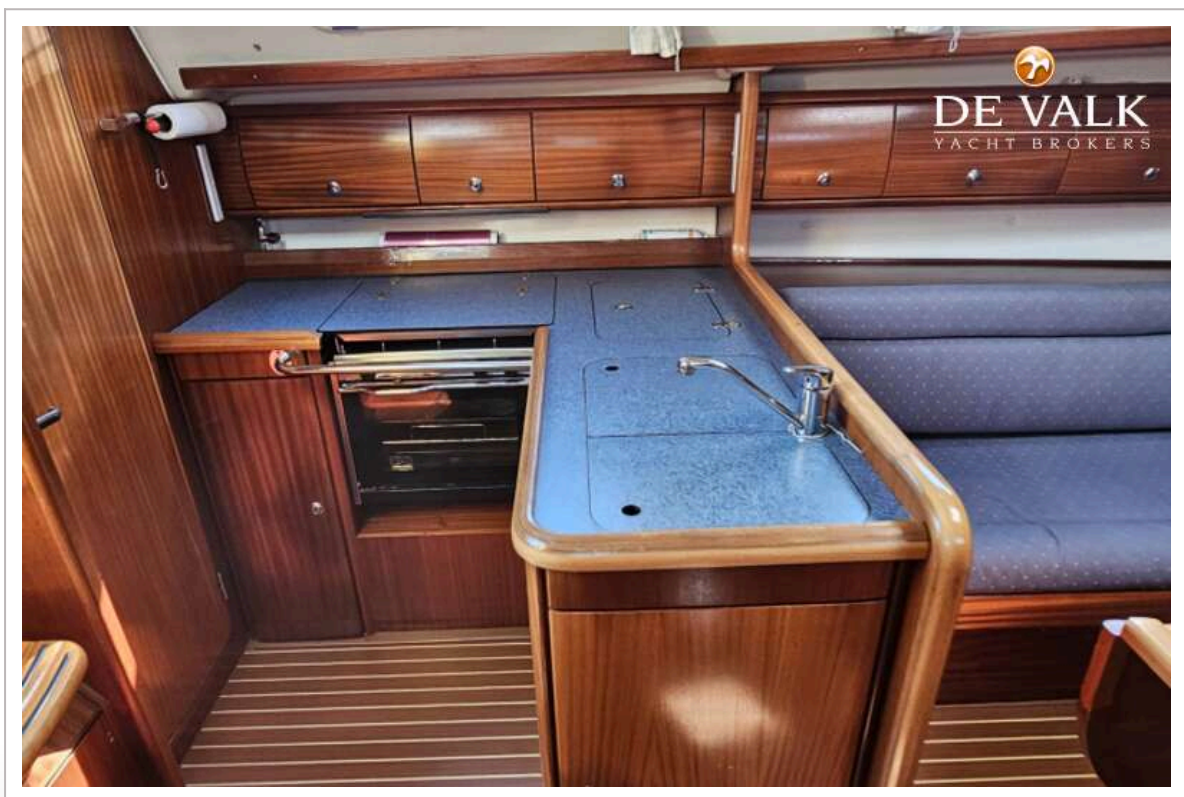
BAVARIA 36-3



BAVARIA 36-3



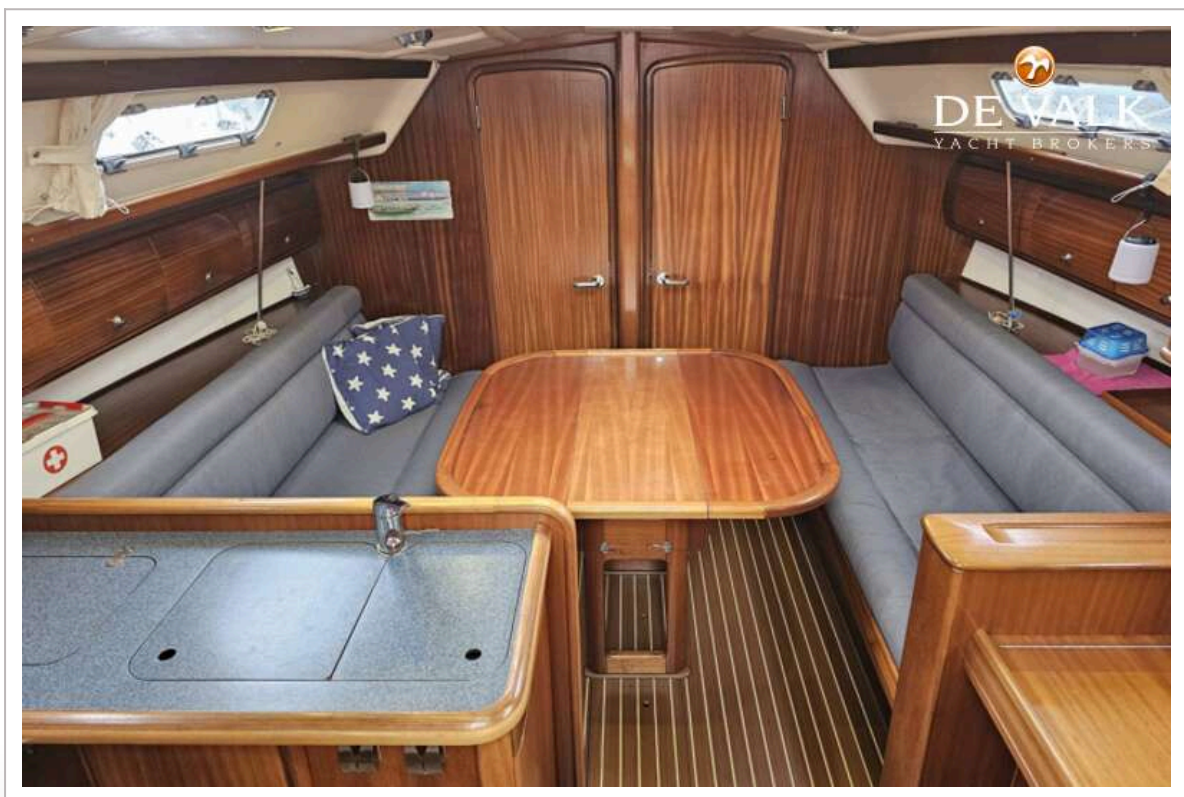
BAVARIA 36-3



BAVARIA 36-3



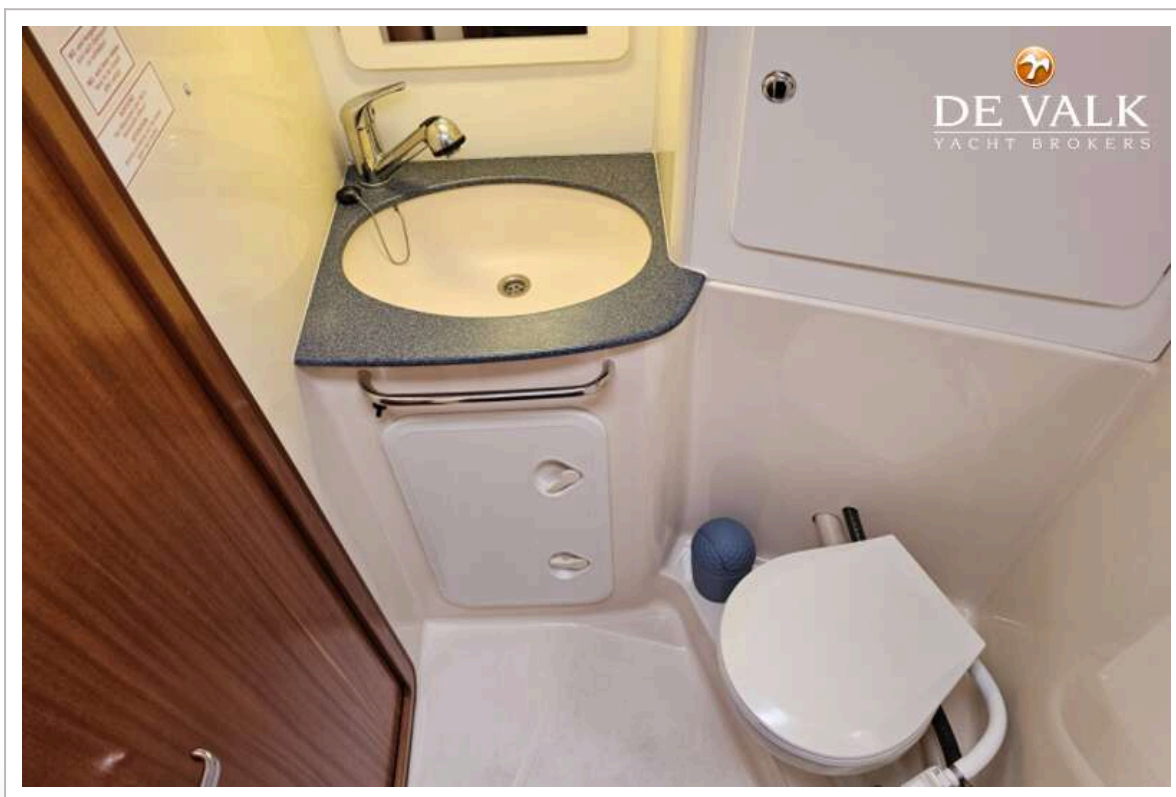
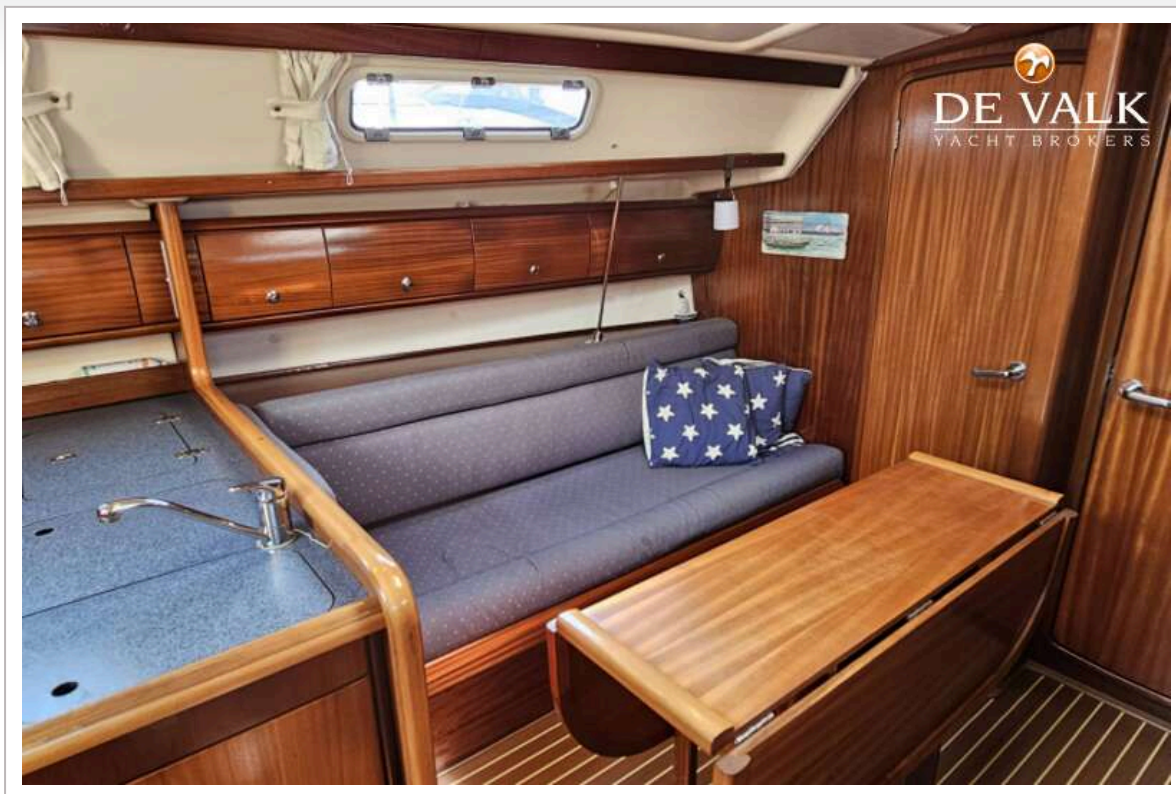
BAVARIA 36-3



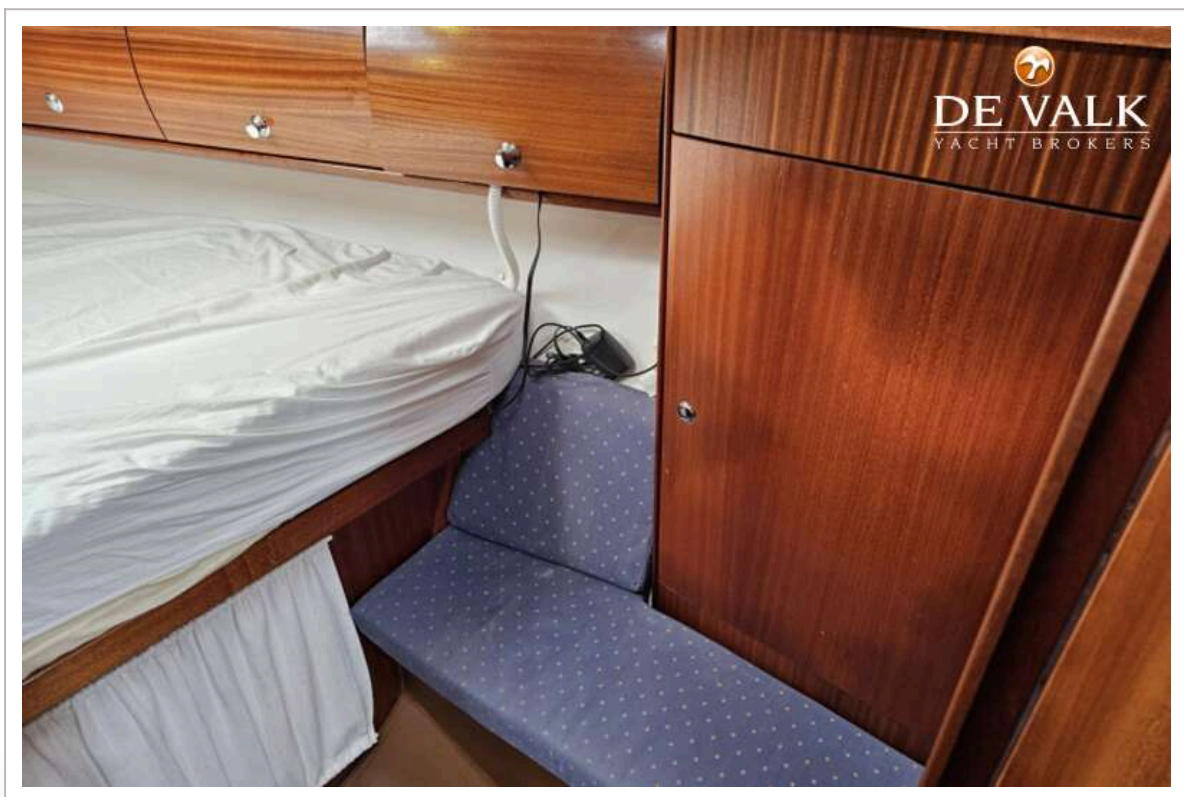
BAVARIA 36-3



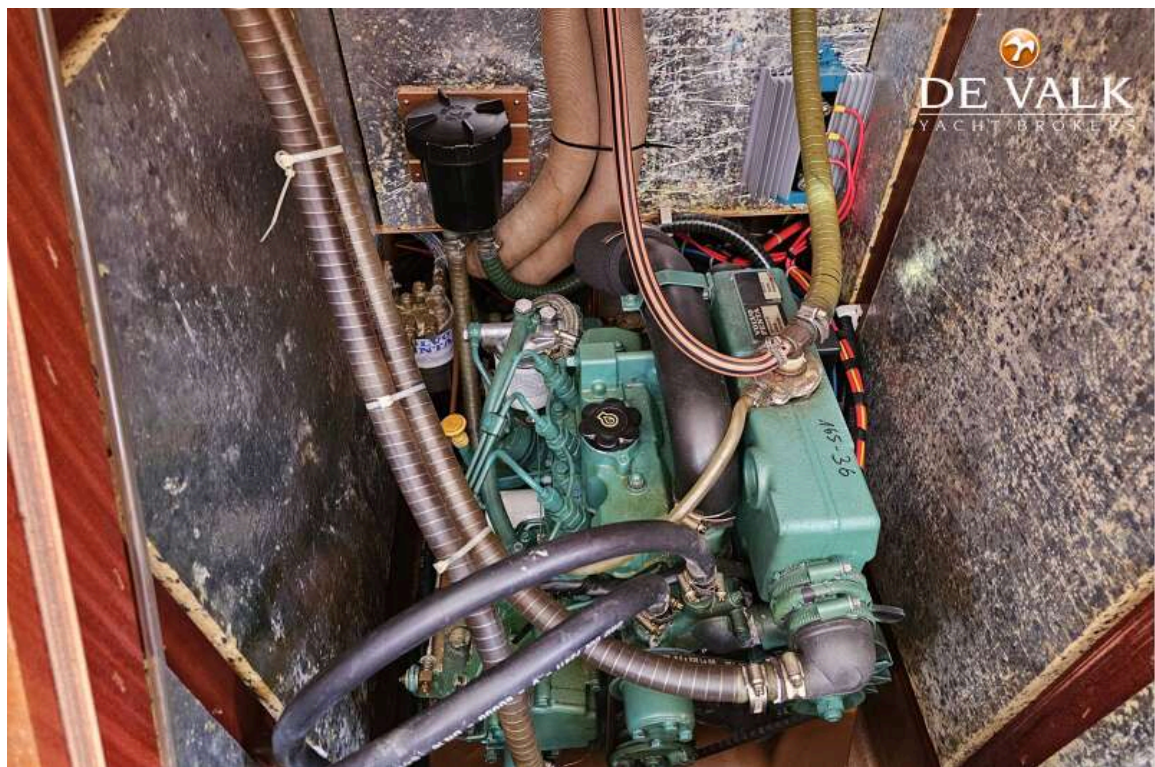
BAVARIA 36-3



BAVARIA 36-3



BAVARIA 36-3





BAVARIA 36-3

