



DE VALK
YACHT BROKERS



SCIARELLI SCHOONER



DE VALK
YACHT BROKERS

BROKER'S COMMENTS

"Beautiful ship designed by the well-known Carlo Sciarelli This Sciarelli has excellent sailing qualities even in rough seas, the interiors are made of solid wood with an excellent finish."

Valerio Biondi

SPECIFICATIONS

Dimensions	20,00 x 4,00 x 1,80 (m)	Builder	ZENNARO - MANCINI
Built	1984	Cabins	4
Material	Steel	Berths	10
Engine(s)	1 x VOLVO PENTA TAMD31B diesel	Hp/Kw	137 (hp), 100,83 (kw)
Asking price	EUR 180.000 (vat: paid)	Lying	not at sales office

CONTACT

Sales office	De Valk Antibes	Telephone	+33 492 91 0202
Address	2, Avenue de Verdun 06600 Antibes France	Fax	+33 (0)492 91 0301
		E-mail	antibes@devalk.nl

DISCLAIMER

These particulars are given in good faith as supplied but cannot be guaranteed and cannot be used for contracts.



SCIARELLI SCHOONER

GENERAL

Model	SCIARELLI SCHOONER
Type	sailing yacht
LOA (m)	20,00
Beam (m)	4,00
Draft (m)	1,80
Year built	1984
Builder	ZENNARO - MANCINI
Country	Italy
Designer	C. SCIARRELLI
Displacement (t)	18
Hull material	steel
Hull colour	Red
Deck material	Steel
Deck finish	Kiwi grip
Cockpit deck finish	Iroko
Antifouling (year)	2024
Fuel tank (litre)	750
Freshwater tank (litre)	1000
Outside helm position	Stern end bar
More info on hull	In order
More info on paintwork	Regularly maintained painted

ACCOMMODATION

Cabins	4
Berths	10
Crew cabin	yes
Crew berths	2
Interior	Mogano
Floor	Teak / Maple



SCIARELLI SCHOONER

Aft deck	Teak / Maple
Saloon	yes
Chart table	yes
Aft Cabin	yes
Dining room	yes
Dinette	yes
Galley	yes
Oven	yes
Fridge	yes
Freezer	yes
Hot water system	yes
Water pressure system	yes
Owners cabin	yes
Bed length (m)	1,90
Bathroom	3
Toilet	3
Toilet system	All electric
Shower	2 internal 2 external (hot - cold)
Guest cabin 1	yes
Bed length (m)	1,90
Wardrobe	yes
Bathroom	yes
Toilet	yes
Toilet system	Electric
Shower	yes
Guest cabin 2	yes
Bed length (m)	1,90
Wardrobe	yes
Crew cabin(s)	yes
Bathroom (crew)	yes
Toilet (crew)	yes



SCIARELLI SCHOONER

Toilet system	Electric
Shower (crew)	yes

MACHINERY

No of engines	1
Make	VOLVO PENTA
Type	TAMD31B
HP	137
kW	100.83
Fuel	diesel
Year of overhaul	1990
Maximum speed (kn)	9
Cruising speed (kn)	7,8
Propeller type	Fixed
Propeller blades	3
Generator	3,5 KW Dometic
Service battery	2023
Battery charger	Quick
Inverter	Power Saiver 1000W
Watermaker	HP 120/H

NAVIGATION

Compass	yes
Depth sounder	Raymarine
VHF	Simrad
Autopilot	Raymarine
Plotter/GPS	Furuno
EPIRB	yes
Navigation lights	yes



EQUIPMENT

Sprayhood	yes
Bimini	yes
Cockpit cushions	yes
Cockpit table	yes
Bathing platform	yes
Anchor	Bruce
Anchor chain	yes
Windlass	electrical
Dinghy	Lomac 3,60
Outboard	Yamaha 8 CV
Life raft	yes
Safety lines on deck	yes
Fenders	yes
Mooring lines	yes
Radio-cd player	yes
Speakers in salon	yes

RIGGING

Rigging	Schooner
Material mast	Wood (peach pine)
Mainsail	yes
Genoa	yes
Gennaker	yes
Staysail	yes
Stormjib	yes
Primary sheet winch	yes



SCIARELLI SCHOONER



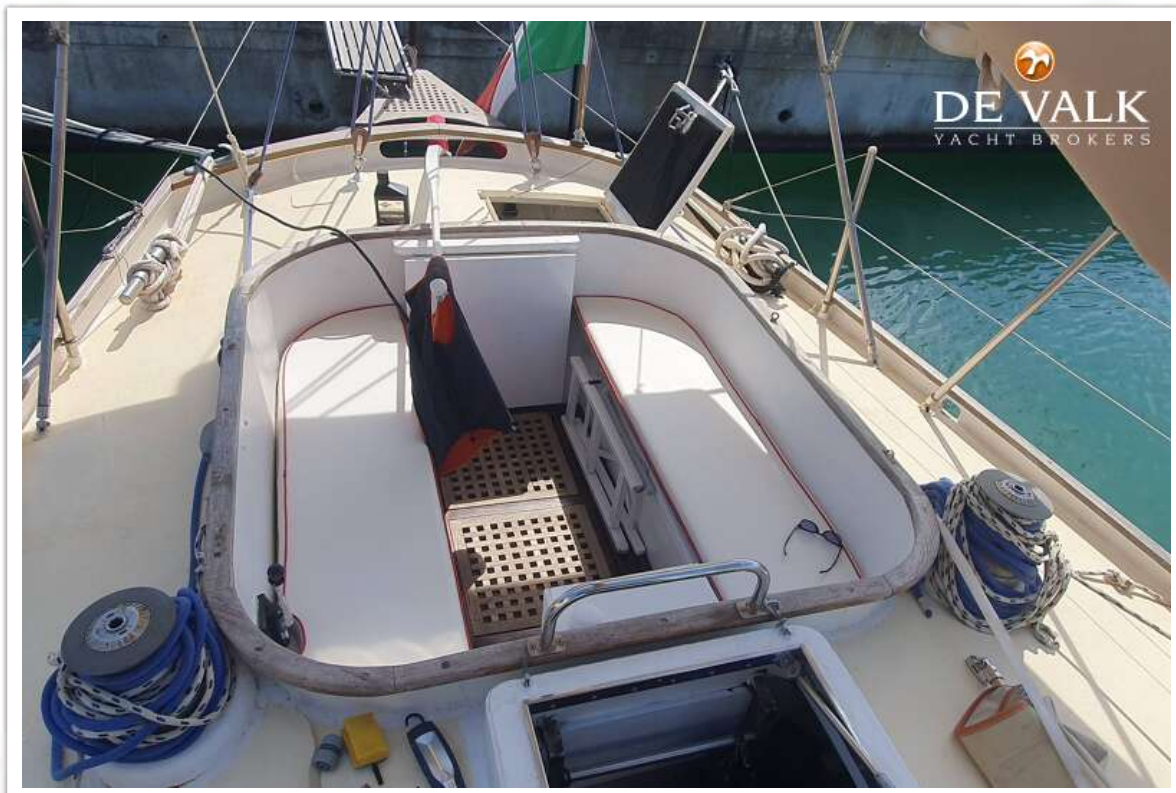
SCIARELLI SCHOONER



SCIARELLI SCHOONER



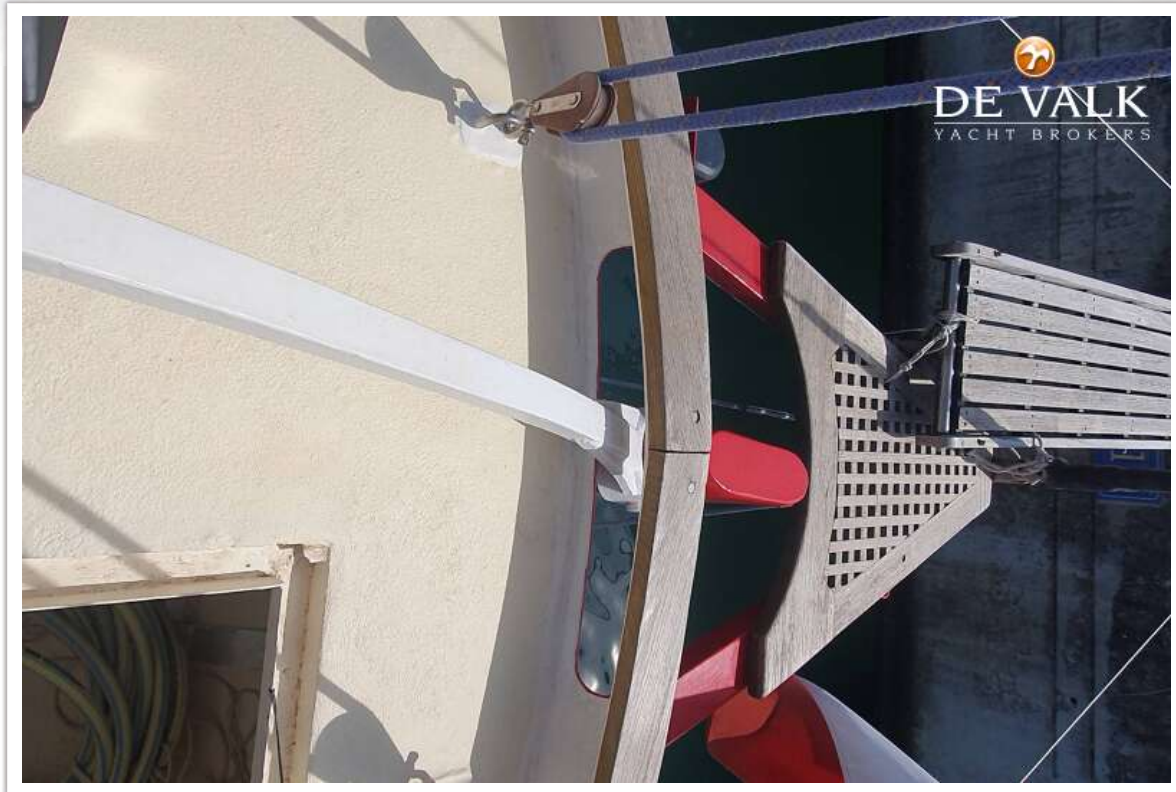
SCIARELLI SCHOONER



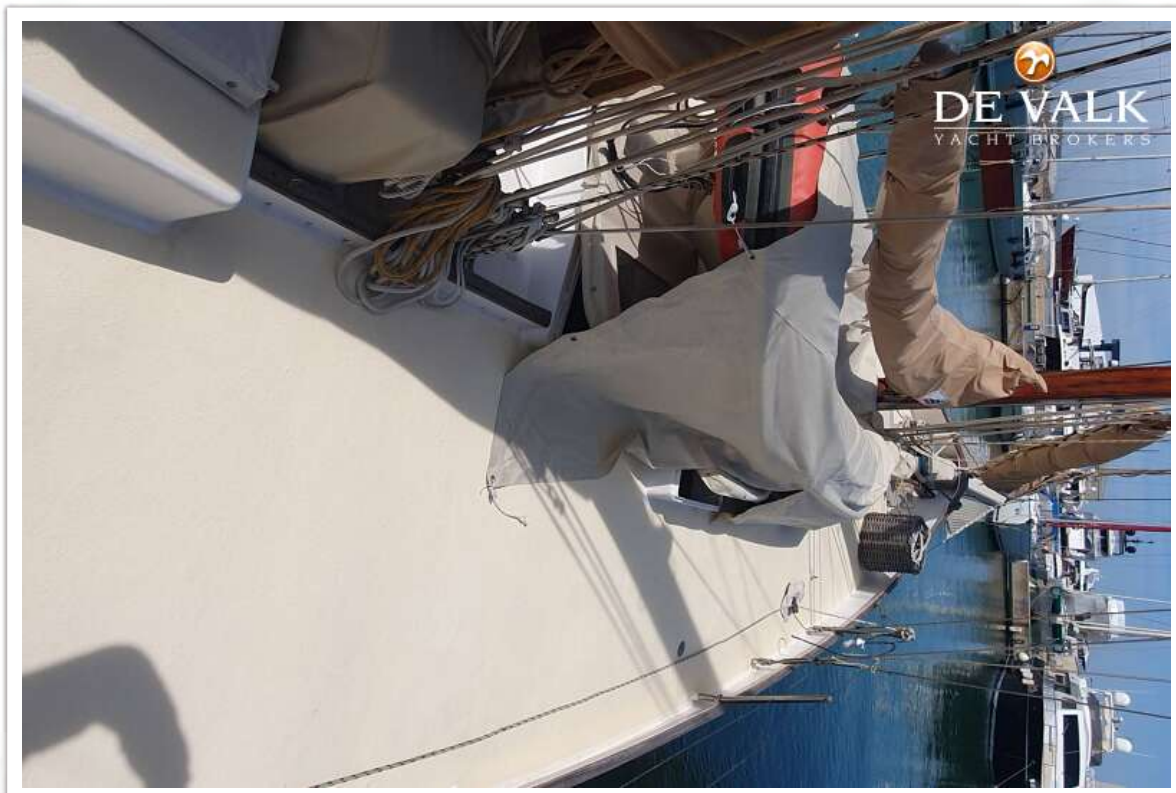
SCIARELLI SCHOONER



SCIARELLI SCHOONER



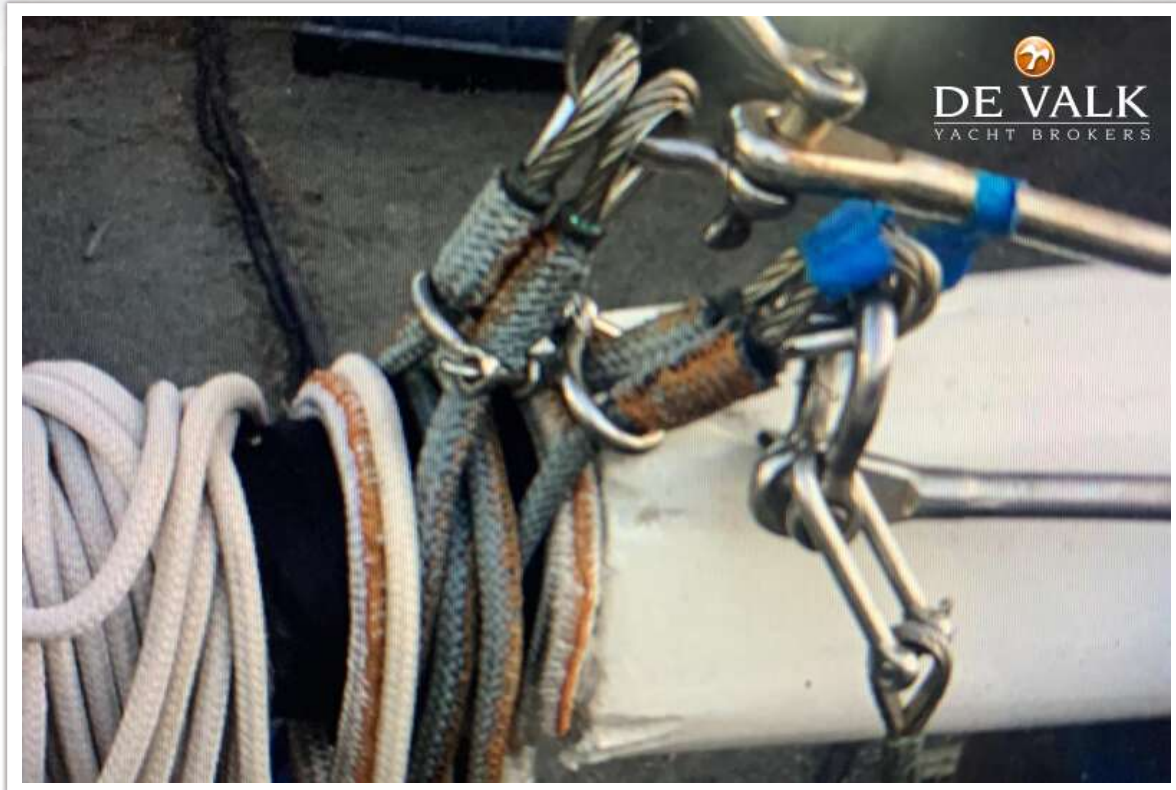
SCIARELLI SCHOONER



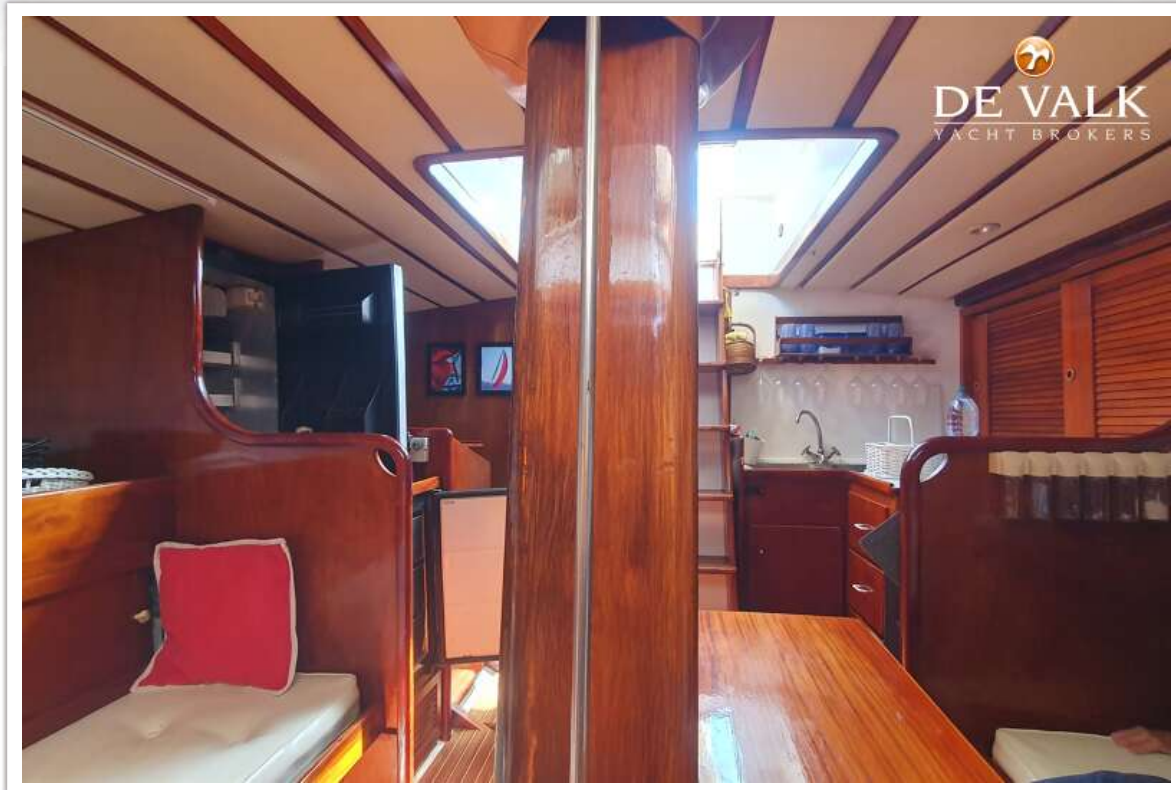
SCIARELLI SCHOONER



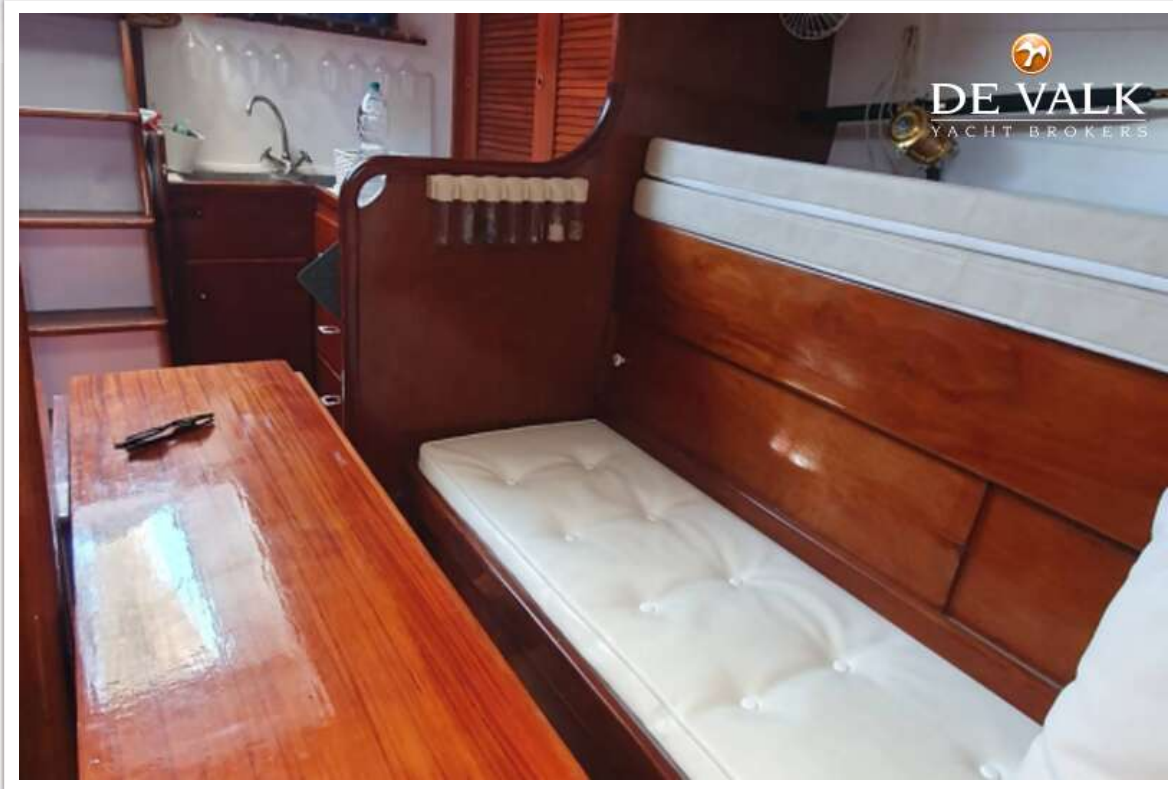
SCIARELLI SCHOONER



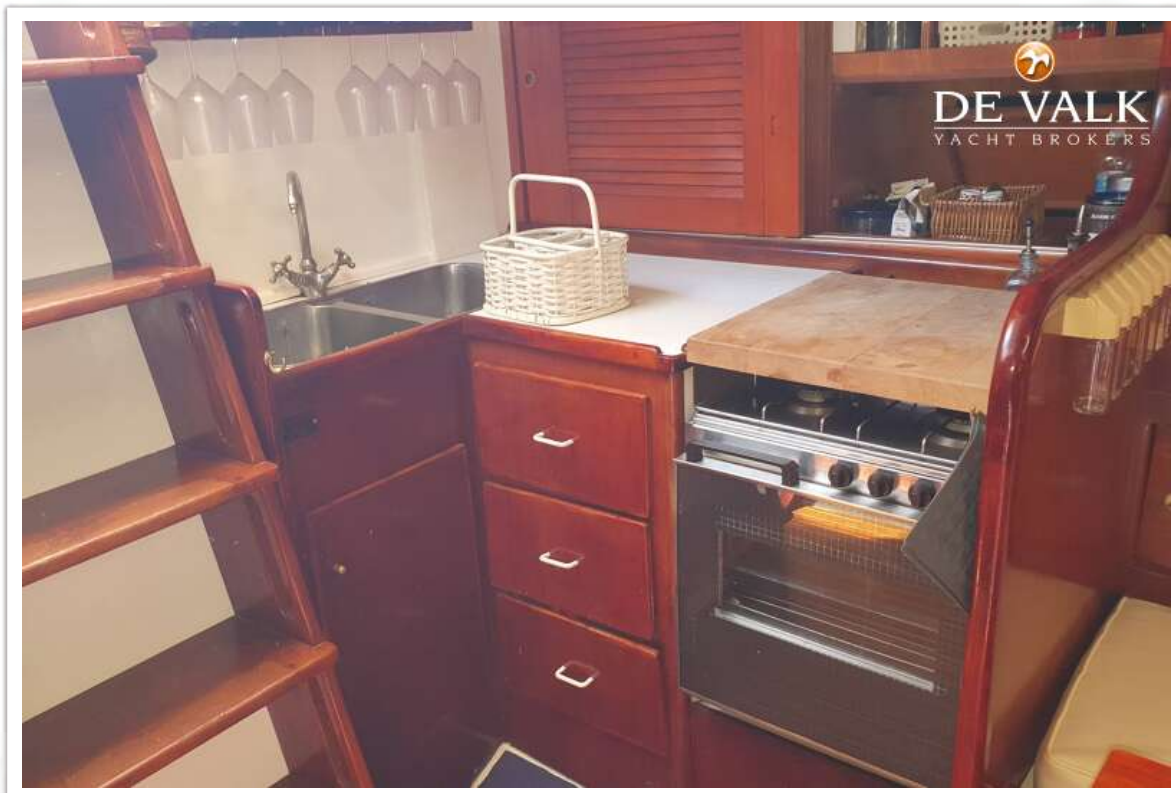
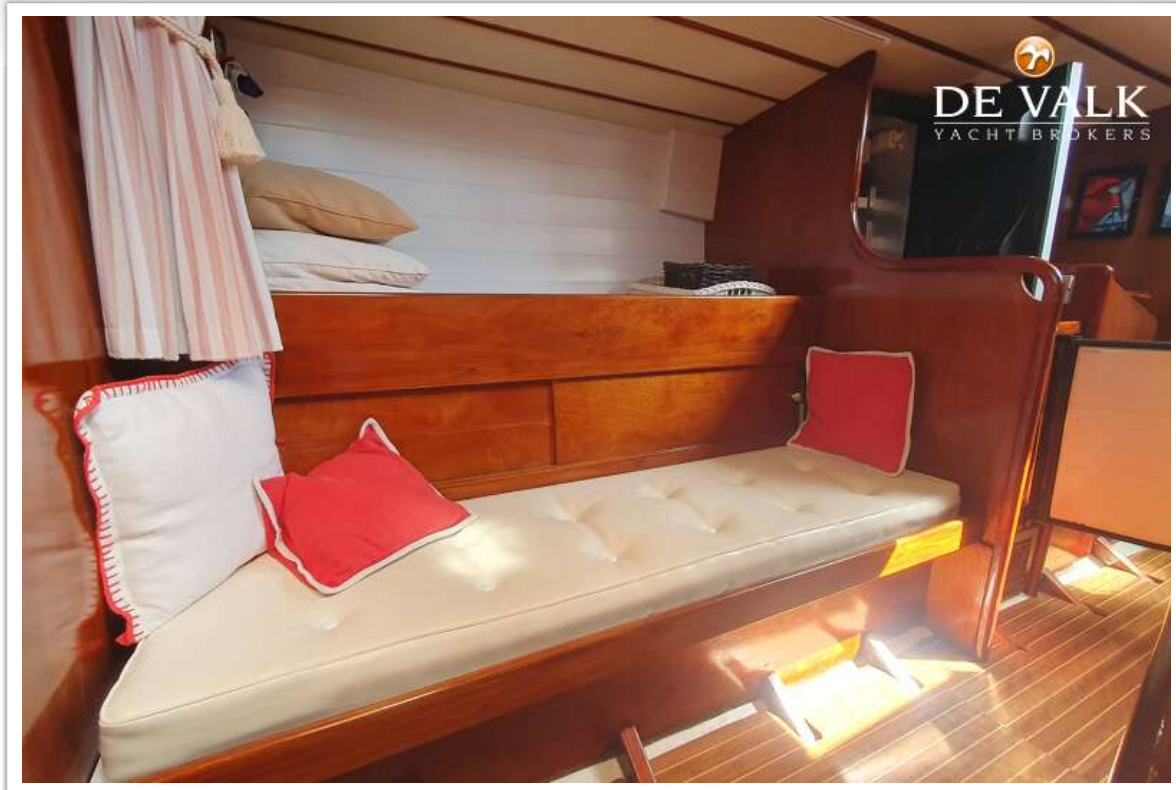
SCIARELLI SCHOONER



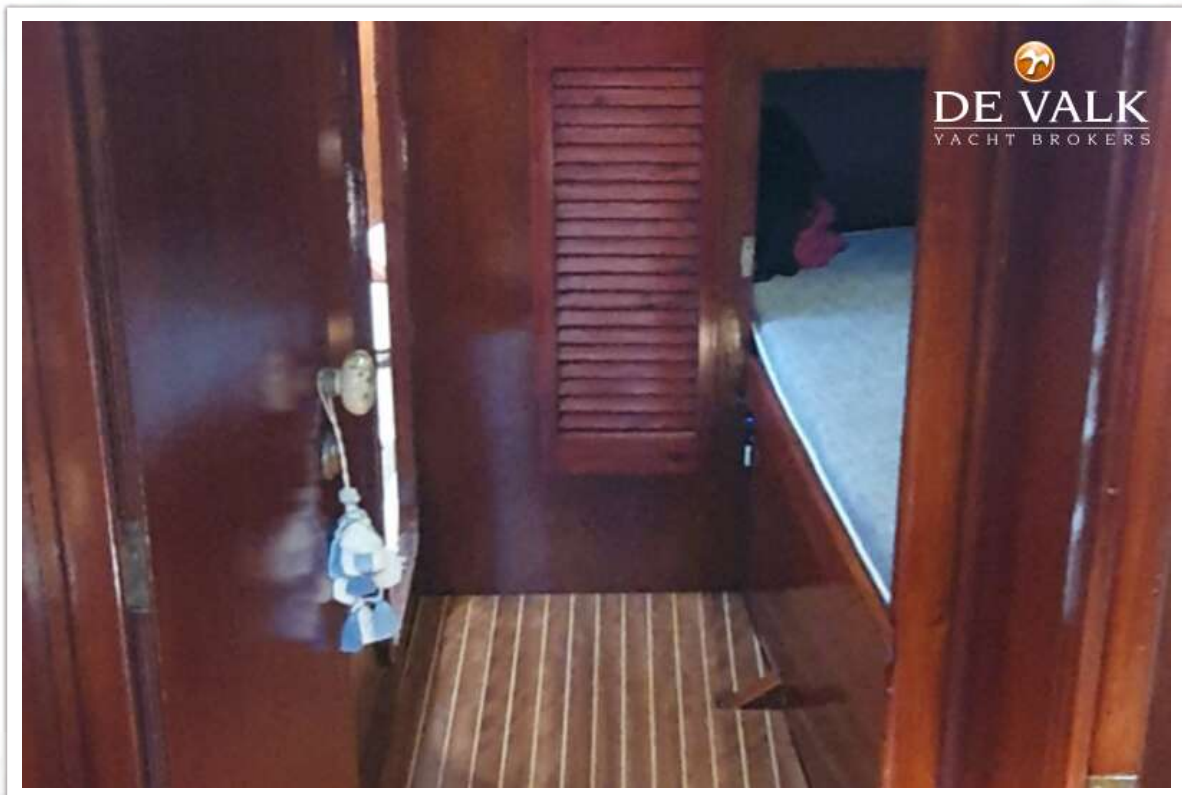
SCIARELLI SCHOONER



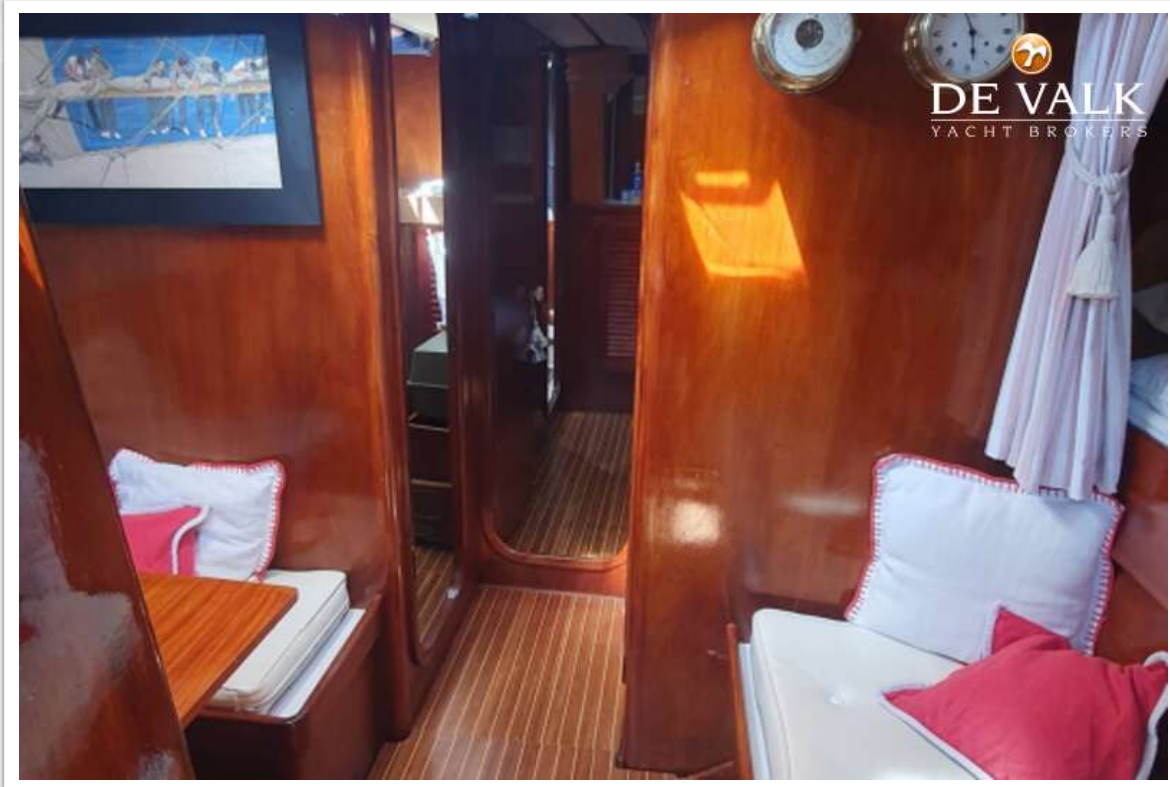
SCIARELLI SCHOONER



SCIARELLI SCHOONER



SCIARELLI SCHOONER



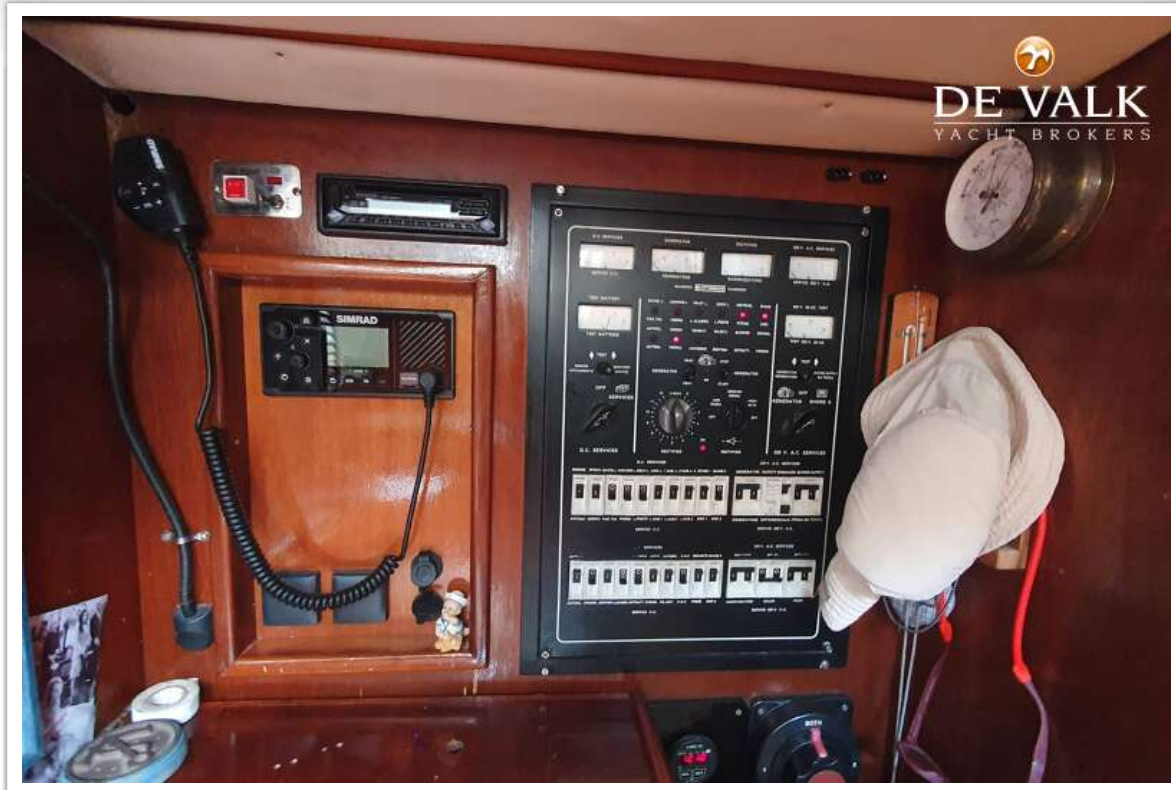
SCIARELLI SCHOONER



SCIARELLI SCHOONER



SCIARELLI SCHOONER



SCIARELLI SCHOONER



