



DE VALK
YACHT BROKERS



GILLISSEN KOTTER 1800



DE VALK
YACHT BROKERS

BROKER'S COMMENTS

'Noorderlicht' is a solid built and sturdy looking Gillissen kotter that was built only thirty years ago. Her current owner has been upgrading the yacht during the last couple of year to adapt her to the new millenium. A beautiful designed hull with large fuel- and watertanks, double engines, generator and back up systems for every piece of navigational equipment, make her very suitbale for long range cruising at sea.

Mark Hesselmans

SPECIFICATIONS

| | | | |
|---------------------|--------------------------------|----------------|------------------------------|
| Dimensions | 18.06 x 4.98 x 1.60 (m) | Builder | Bak - Broek op Lange Dijk |
| Built | 1974 | Cabins | 3 |
| Material | Steel | Berths | 6 |
| Engine(s) | 2 x Volvo Penta MD 100B diesel | Hp/Kw | 2 x 150.00 (hp), 110.00 (kw) |
| Asking price | sold (VAT) | Lying | at sales office |

CONTACT

| | | | |
|---------------------|---|------------------|----------------------|
| Sales office | De Valk Loosdrecht B.V. | Telephone | +31 (0)35 582 90 30 |
| Address | 't Breukeleveense Meentje 6 1231LM Loosdrecht / Wijdemeren NL | E-mail | loosdrecht@devalk.nl |

DISCLAIMER

These particulars are given in good faith as supplied but cannot be guaranteed.



GENERAL

| | |
|------------------------------------|----------------------------------|
| Model | GILLISSEN KOTTER 1800 |
| Type | motor yacht |
| LOA (m) | 18,06 |
| Beam (m) | 4,98 |
| Draft (m) | 1,60 |
| Year built | 1974 |
| Builder | Bak - Broek op Lange Dijk |
| Country | The Netherlands |
| Designer | Gillissen |
| Displacement (t) | 45 |
| CE norm | NA |
| Hull material | steel |
| Hull colour | blue |
| Hull shape | round-bilged |
| Superstructure material | wood |
| Rubbing strake | steel |
| Deck material | steel |
| Deck finish | teak |
| Superstructure deck finish | paint |
| Cockpit deck finish | teak |
| Dorades | 2x |
| Window frame | aluminium |
| Window material | glass |
| Deckhatch | 2x Gebo |
| Portholes | copper 22 in total, 18x openable |
| Insulation | glasswool |
| Fuel tank (litre) | steel 5000 |
| Level indicator (fuel tank) | Gauge glass on tank |
| Freshwater tank (litre) | 2000 |
| Blackwater tank (litre) | 500 |



| | |
|-------------------------------------|------------------------|
| Level indicator (blackwater) | Wema |
| Blackwater tank extraction | deck extraction + pump |
| Wheel steering | cable steering |
| Inside helm position | yes |

ACCOMMODATION

| | |
|--------------------------------|-------------------------|
| Cabins | 3 |
| Berths | 6 |
| Interior | teak |
| Floor | teak |
| Aft deck | yes |
| Saloon | yes |
| Headroom saloon (m) | +/- 1,90 |
| Sliding roof | manual |
| Heating | central heating |
| Aft Cabin | yes |
| Opening door to cockpit | yes |
| Galley | yes |
| Countertop | wood |
| Sink | stainless steel |
| Cooker | electric AEG |
| Microwave | Bauknecht MWD 1820 duo |
| Fridge | Bosch |
| Freezer | Bosch |
| Hot water system | 220V + engine |
| Owners cabin | twin single |
| Wardrobe | hanging/drawers/shelves |
| Bathroom | en suite |
| Toilet | en suite |
| Toilet system | electric Tecma |
| Wash basin | in the bathroom |



| | |
|-----------------|---------------------|
| Shower | en suite |
| Guest cabin 1 | v-bed |
| Wardrobe | hanging and shelves |
| Bathroom | separate |
| Toilet | shared |
| Toilet system | electric Vetus |
| Wash basin | at the toilet |
| Shower | separate |
| Guest cabin 2 | double bed |
| Wardrobe | hanging and shelves |
| Washing machine | Indesit |

MACHINERY

| | |
|--------------------------|---------------------------|
| No of engines | 2 |
| Make | Volvo Penta |
| Type | MD 100B |
| HP | 150 |
| kW | 110 |
| Fuel | diesel |
| Maximum speed (kn) | 10 |
| Engine cooling system | freshwater heat exchanger |
| Drive | shaft |
| Engine controls | bowden cable |
| Gearbox | hydraulic |
| Bowthruster | hydraulic |
| Propeller type | fixed |
| Propeller shaft material | stainless steel |
| Shaft lubrication | grease |
| Electric bilge pump | yes |
| Generator | JF Marine 10kva |
| Start battery | 4x |



| | |
|--------------------------|-----------------------------|
| Service battery | yes |
| Generator battery | 1x |
| Battery monitor | Victron |
| Battery charger | 2x Victron Skylla-I 24V/80A |
| Inverter | Victron Atlas 24/1200 |
| Shorepower | with cable |
| Stabilizers | fin SeaRocq |

NAVIGATION

| | |
|-------------------------------|----------------------|
| Compass | yes |
| Multi control display | yes |
| Depth sounder | Raymarine ST60+ |
| Log | Raymarine ST60+ |
| VHF | yes |
| Autopilot | Raymarine ST7001+ |
| Rudder angle indicator | Nieaf |
| Radar | 2x Raymarine RL70C |
| Personal computer | yes |
| Camera | Sides and engineroom |
| Navigation lights | yes |
| Searchlight | yes |
| Loudhailer | Raytheon Ray430 |

EQUIPMENT

| | |
|-----------------------|----------------------------|
| Sun awning | yes |
| Cockpit table | yes |
| Cockpit chairs | yes |
| Anchor | yes |
| Anchor chain | yes |
| Windlass | manual Francis Marine 2000 |
| Sea railing | stainless steel |



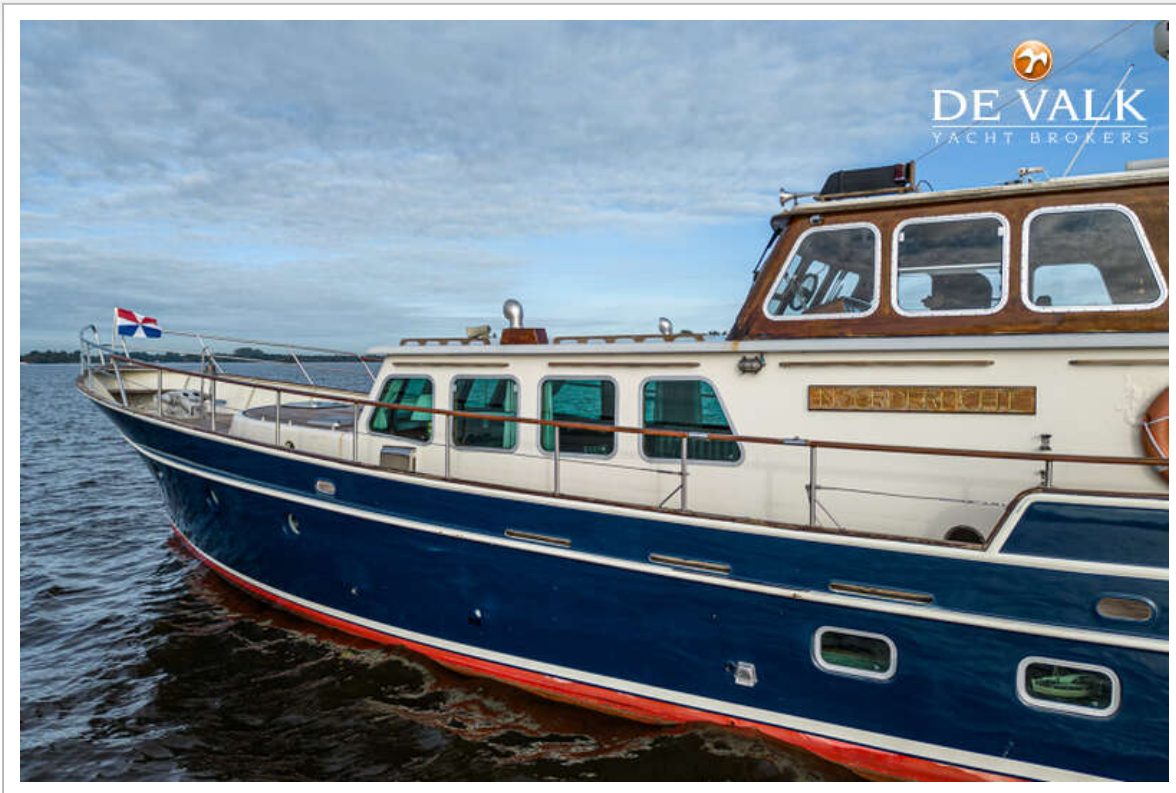
| | |
|----------------------------|------|
| Grab rail (superstructure) | teak |
| Railing side opening gates | yes |
| Wiper | 2x |
| Clearview window | 2x |
| Horn | yes |
| Fenders | yes |
| Mooring lines | yes |
| TV | JCV |
| Radio | yes |
| Speakers in salon | yes |
| Clock - barometer | yes |



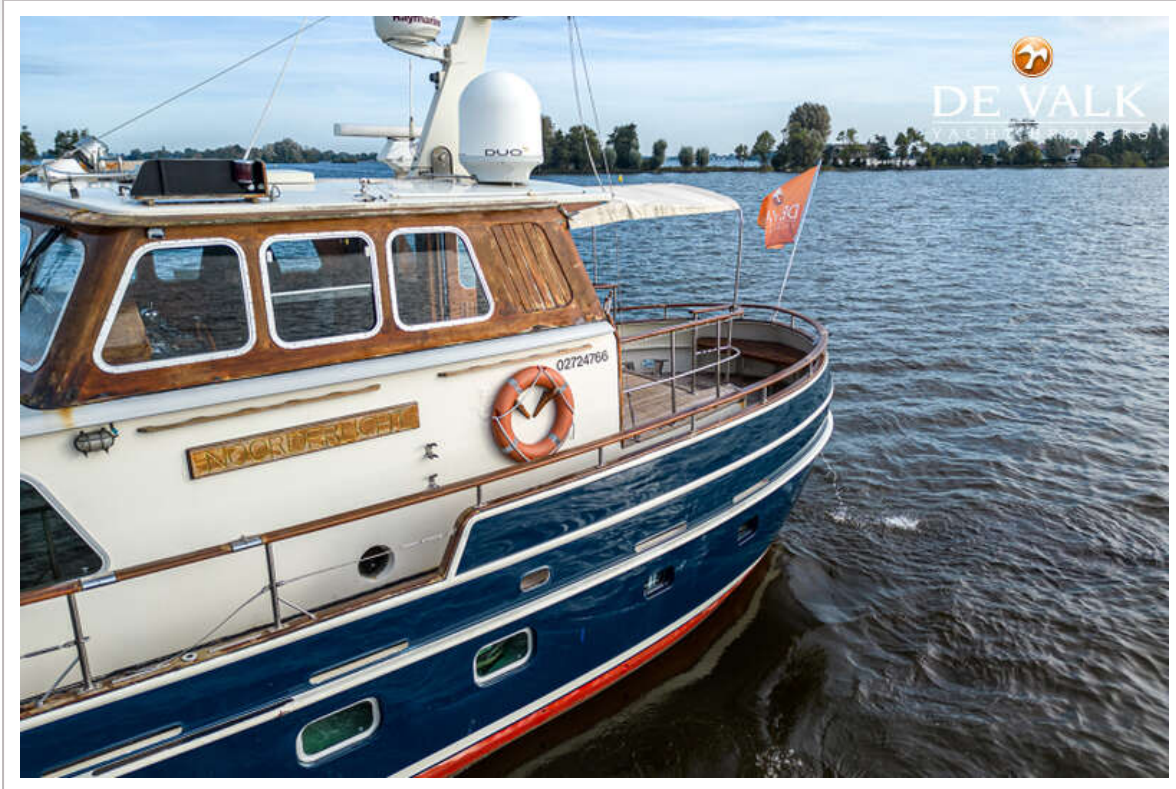
GILLISSEN KOTTER 1800



GILLISSEN KOTTER 1800



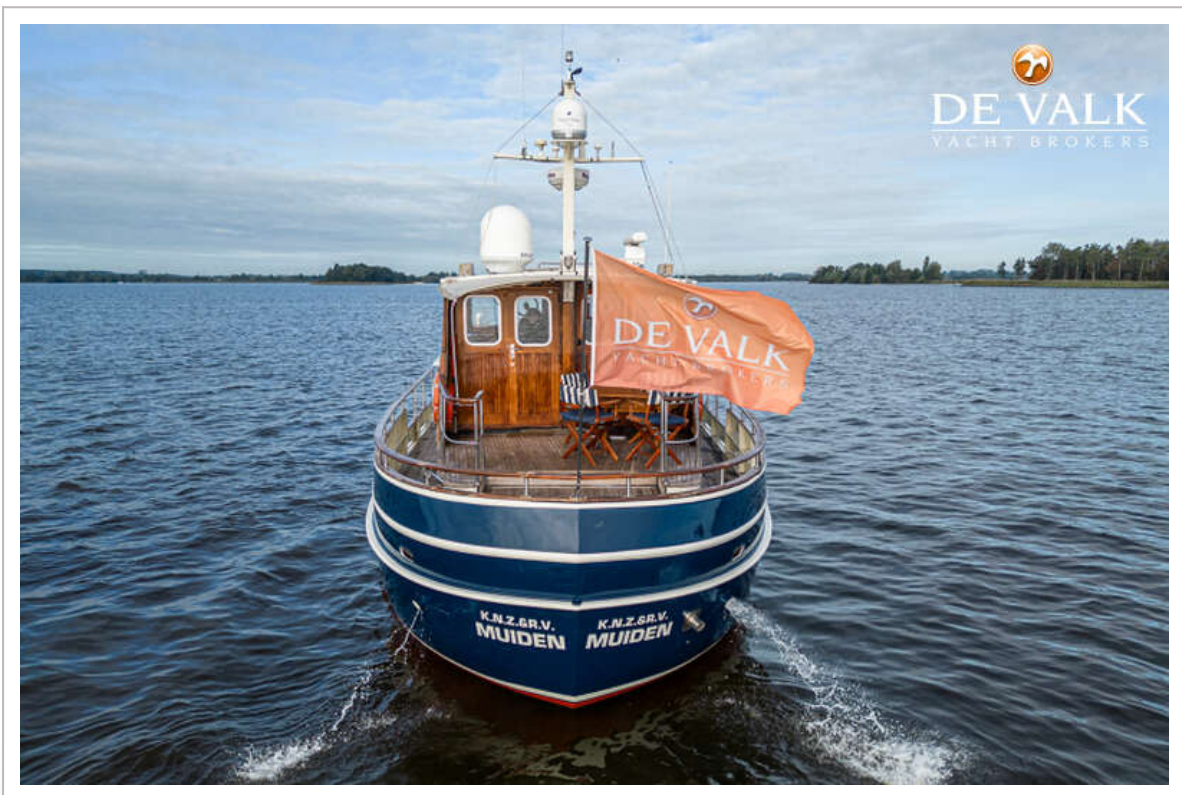
GILLISSEN KOTTER 1800



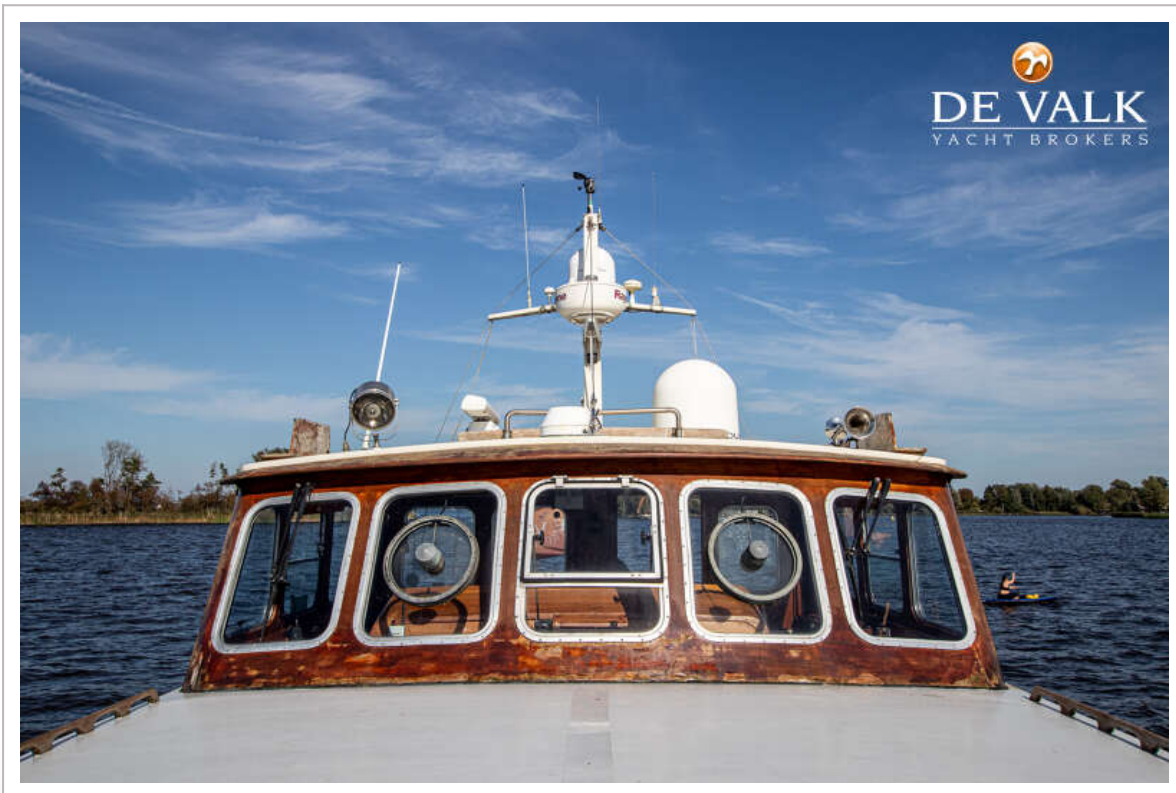
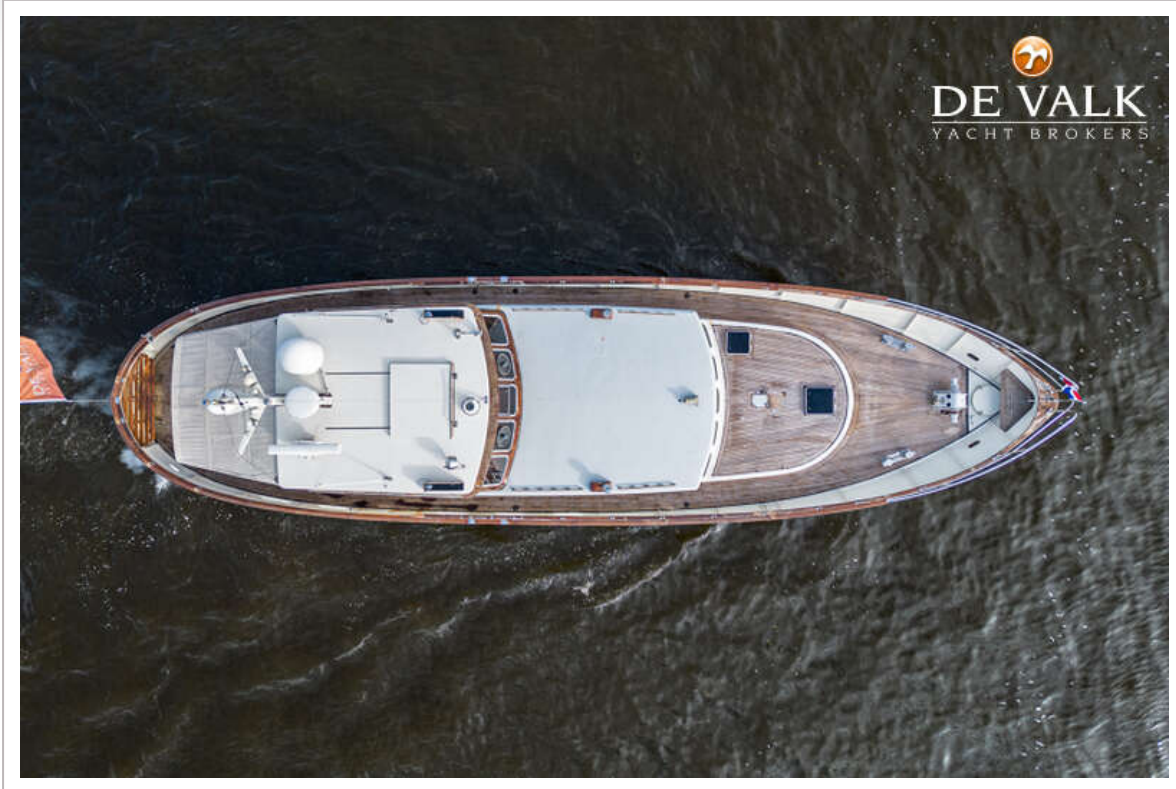
GILLISSEN KOTTER 1800



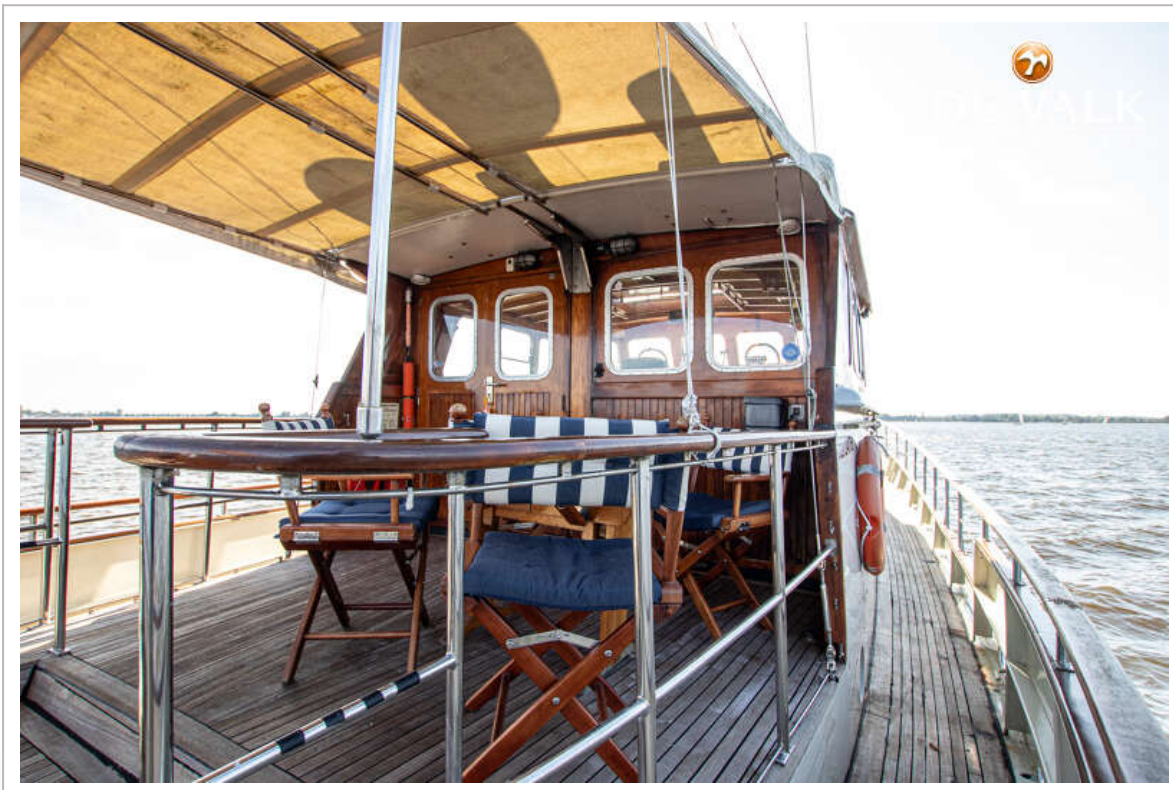
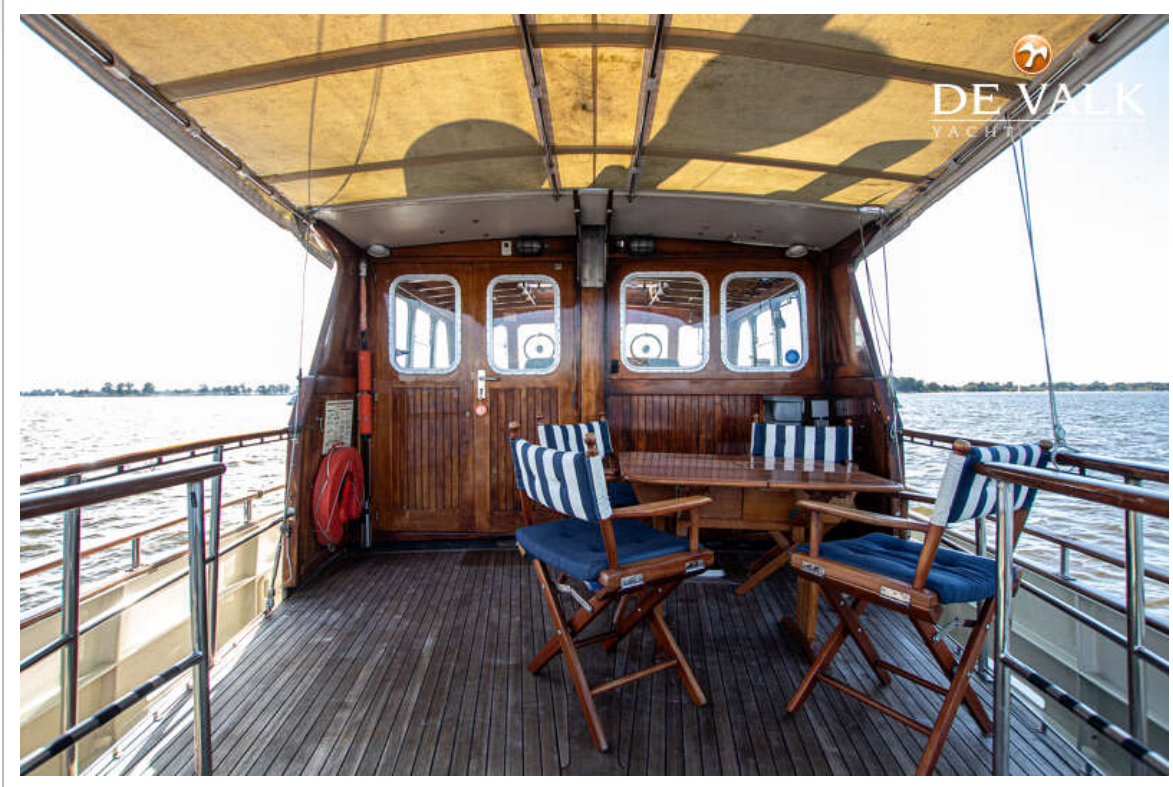
GILLISSEN KOTTER 1800



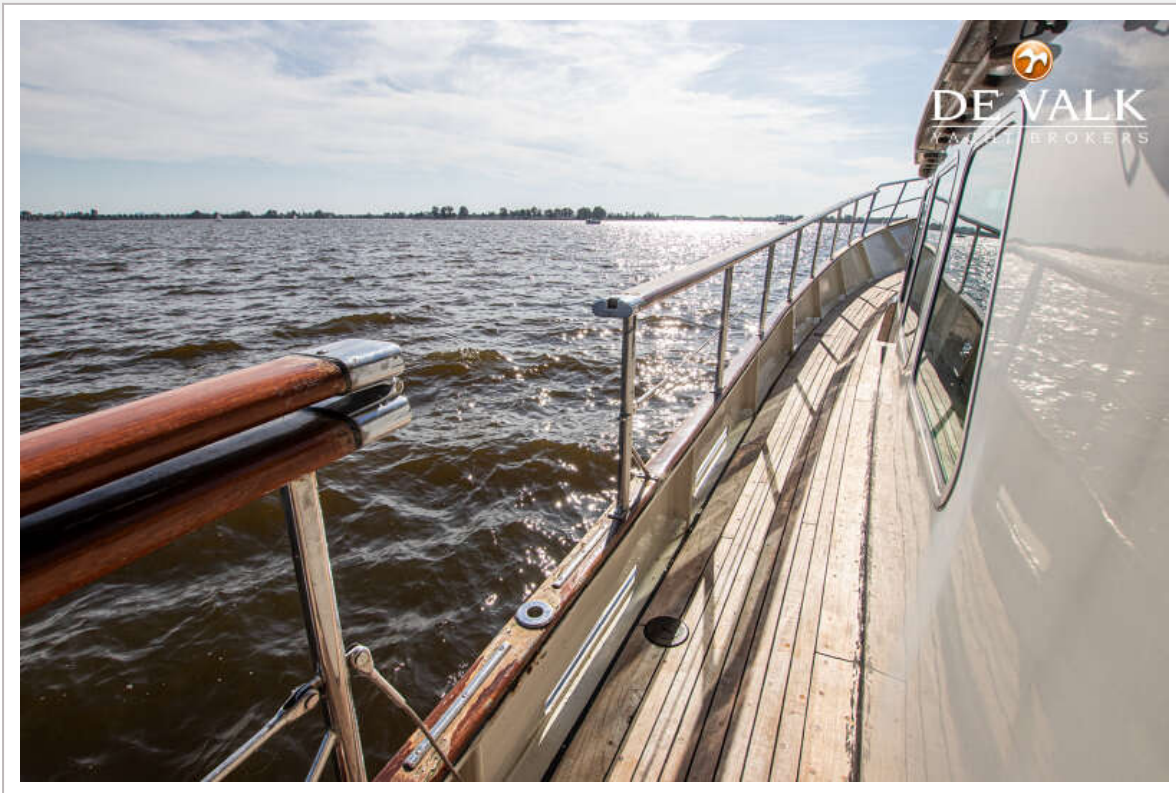
GILLISSEN KOTTER 1800



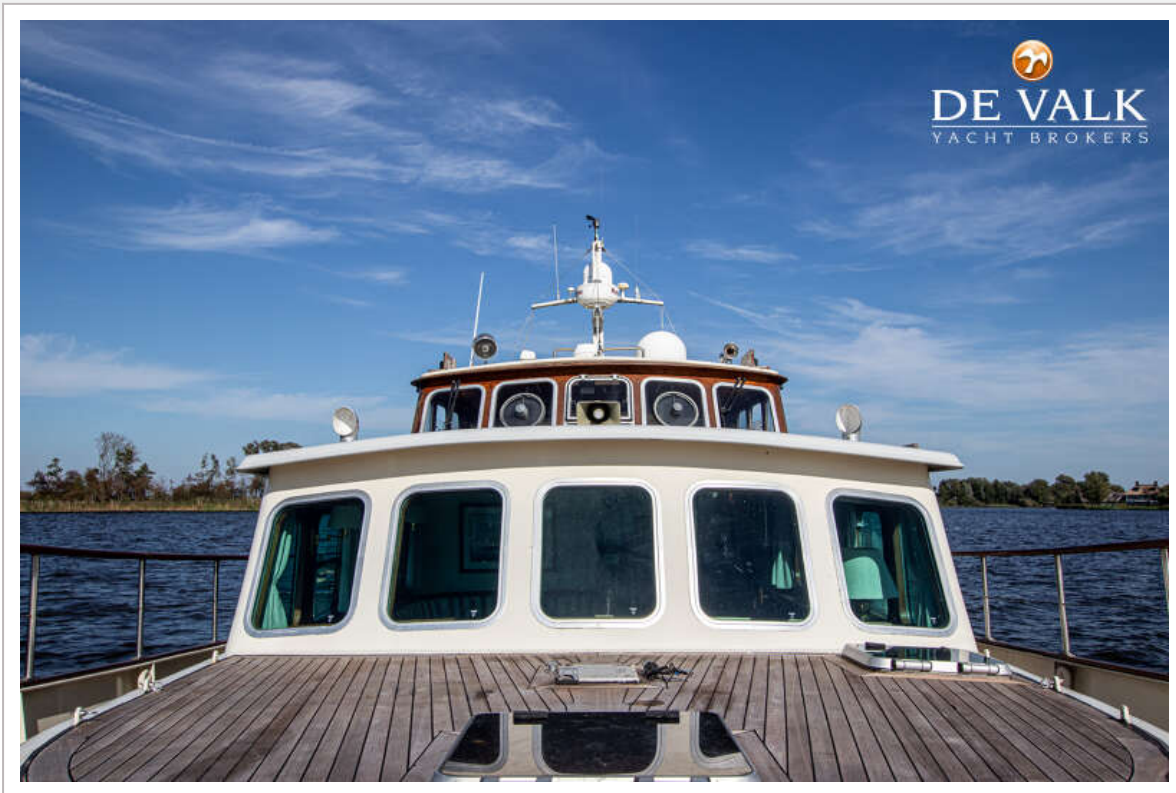
GILLISSEN KOTTER 1800



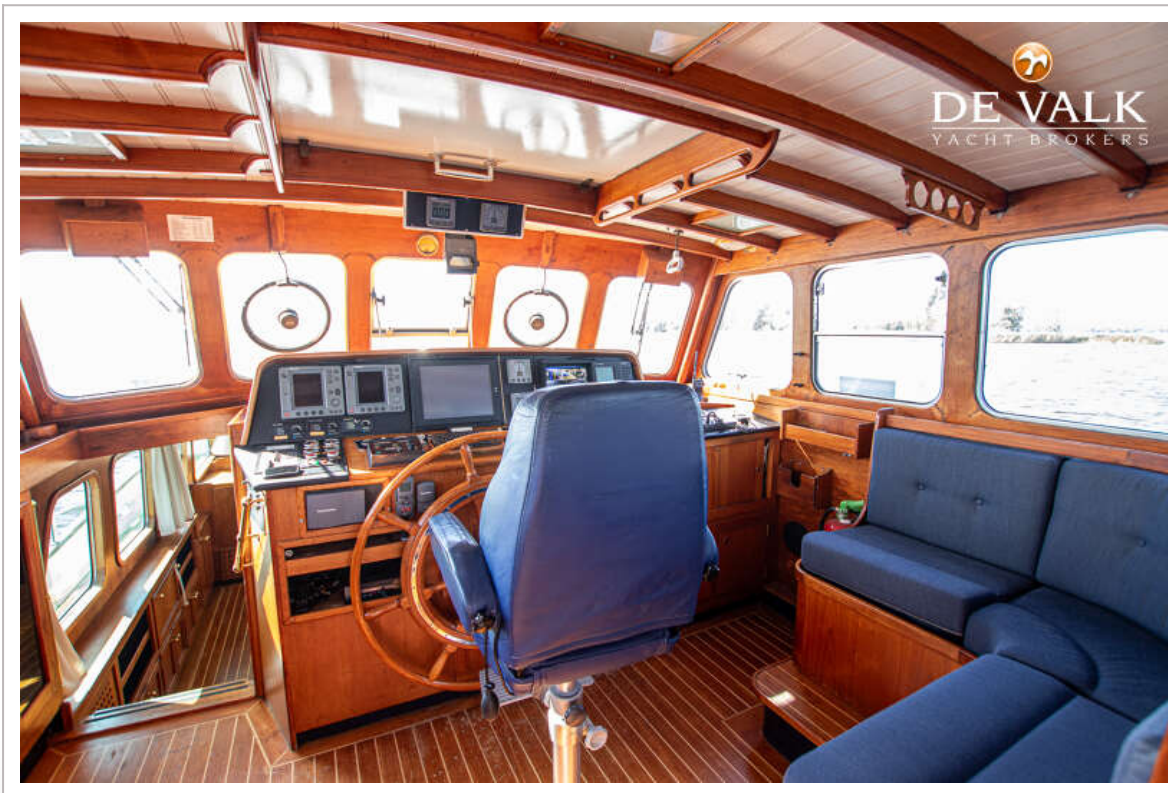
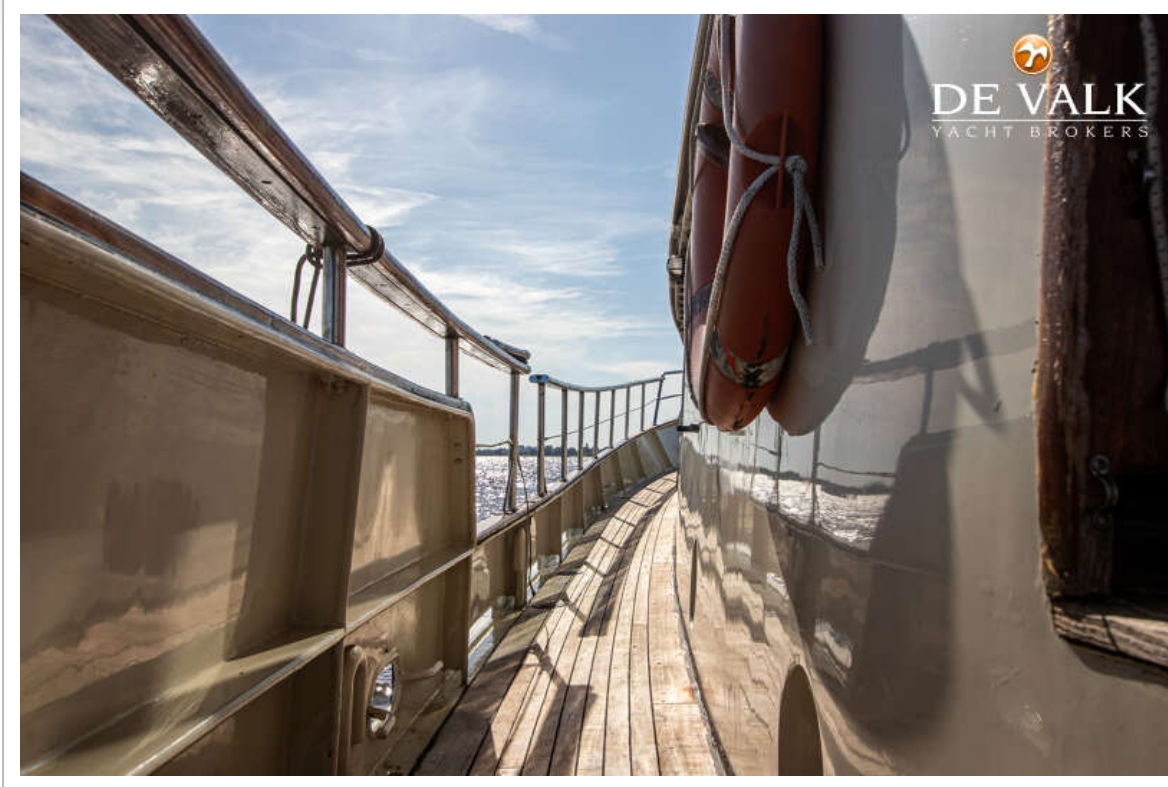
GILLISSEN KOTTER 1800



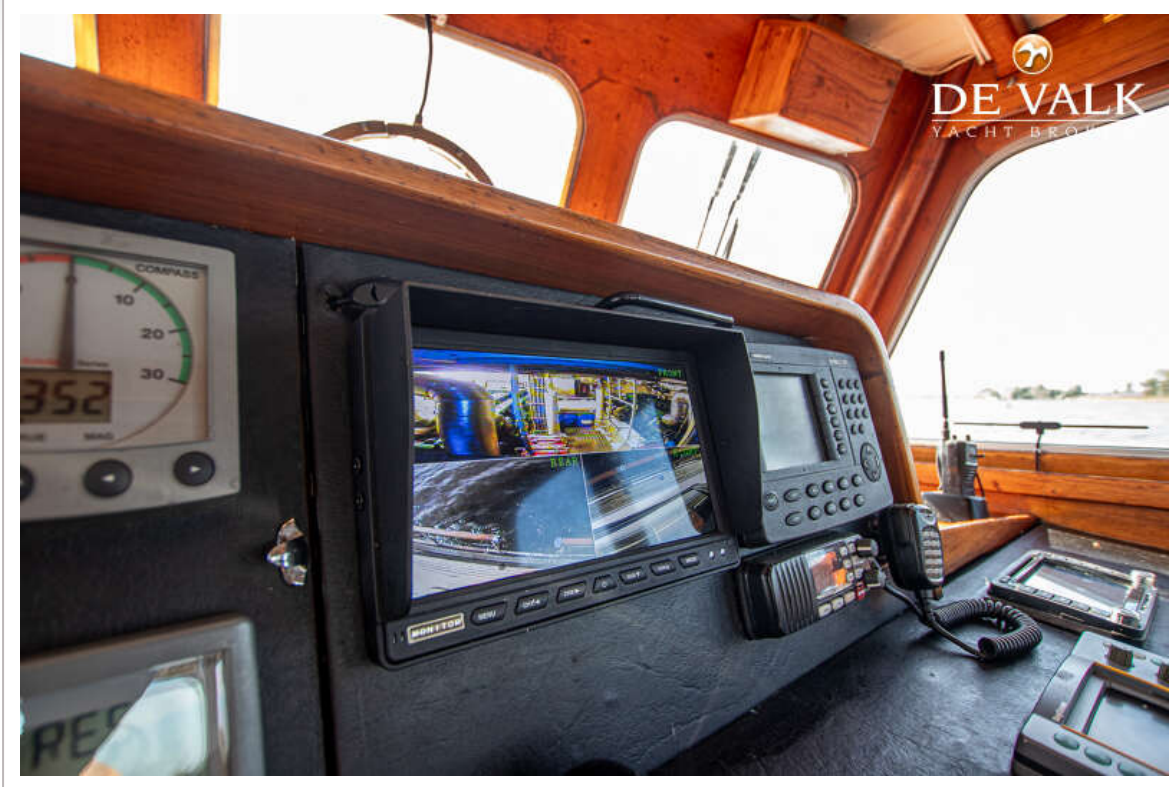
GILLISSEN KOTTER 1800



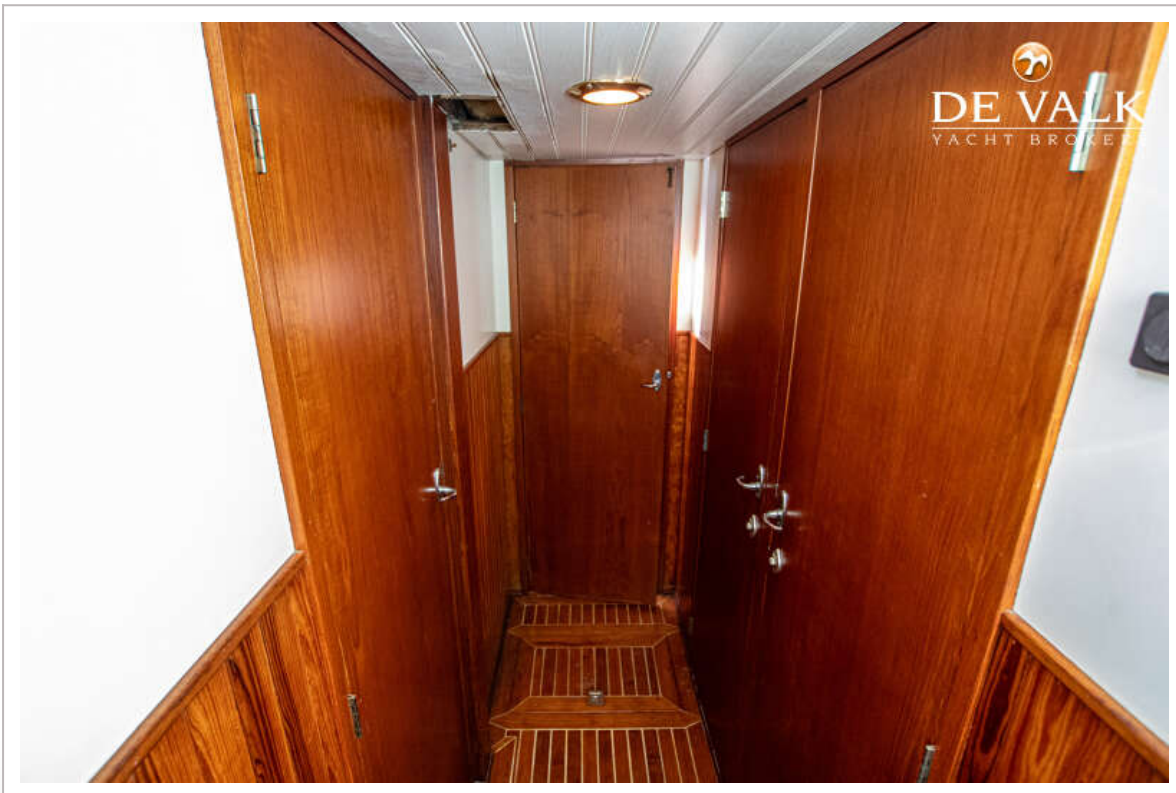
GILLISSEN KOTTER 1800



GILLISSEN KOTTER 1800



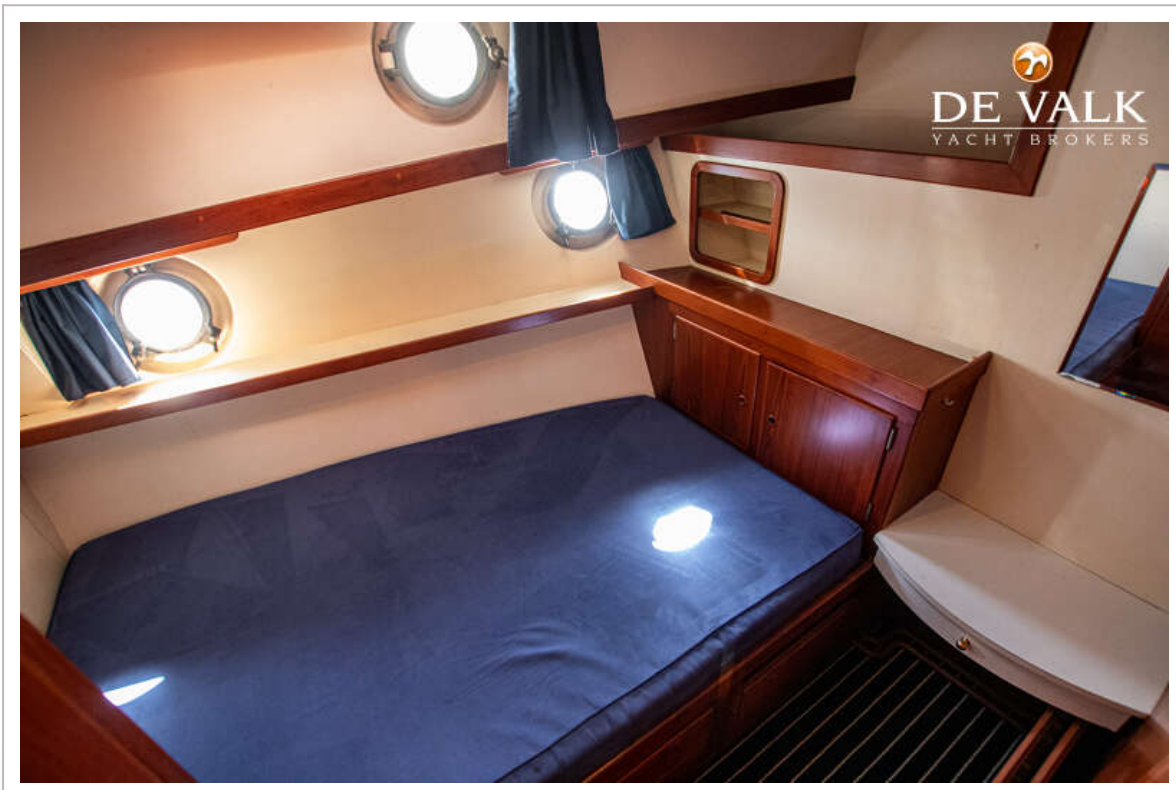
GILLISSEN KOTTER 1800



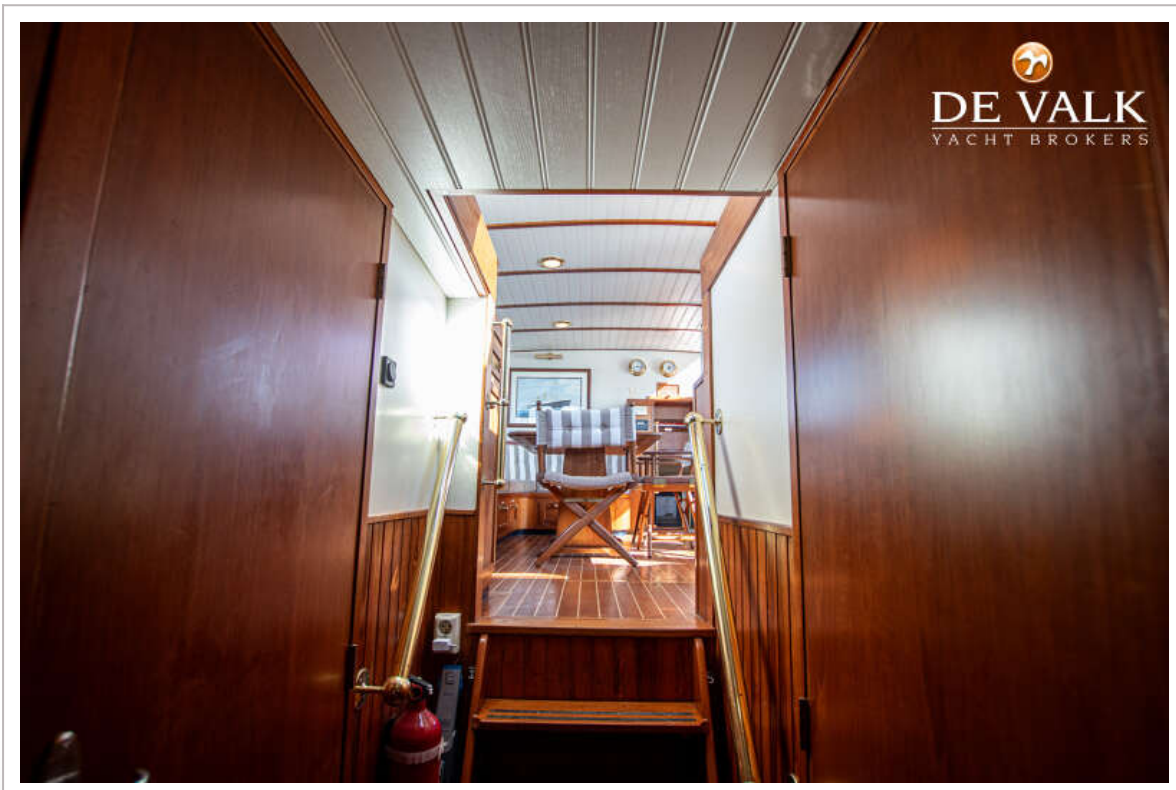
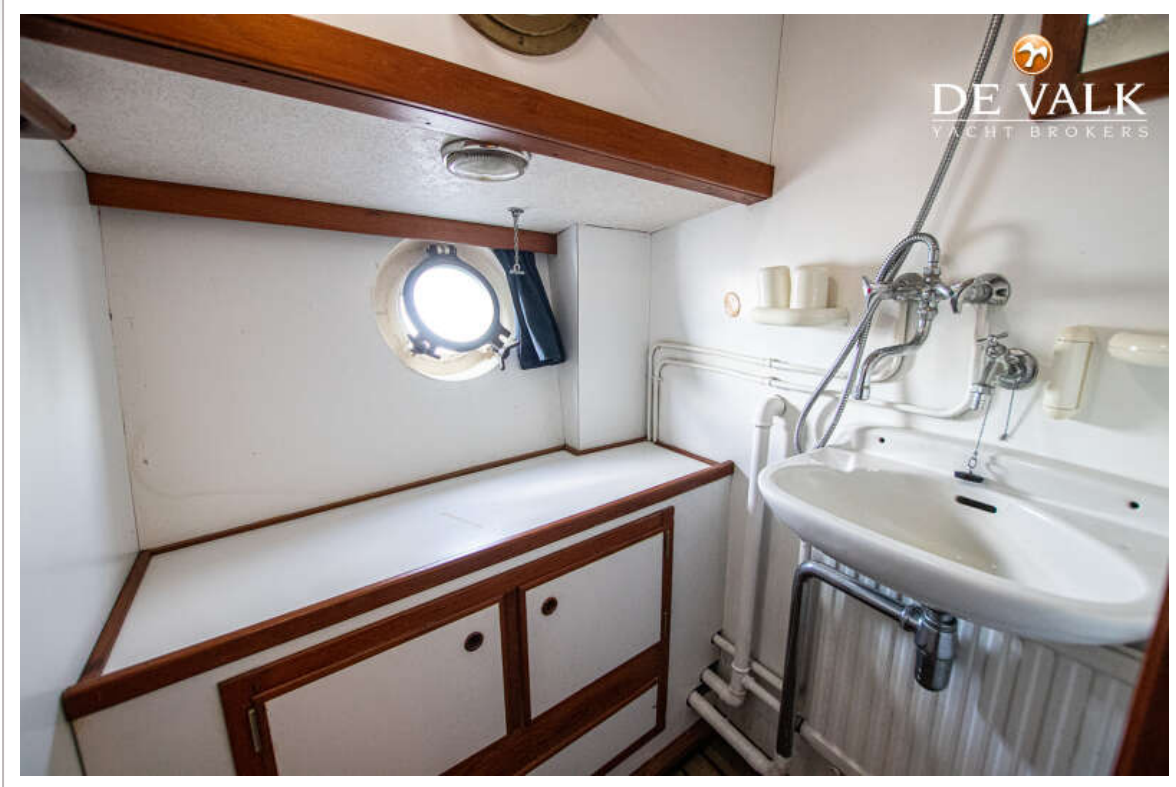
GILLISSEN KOTTER 1800



GILLISSEN KOTTER 1800



GILLISSEN KOTTER 1800



GILLISSEN KOTTER 1800



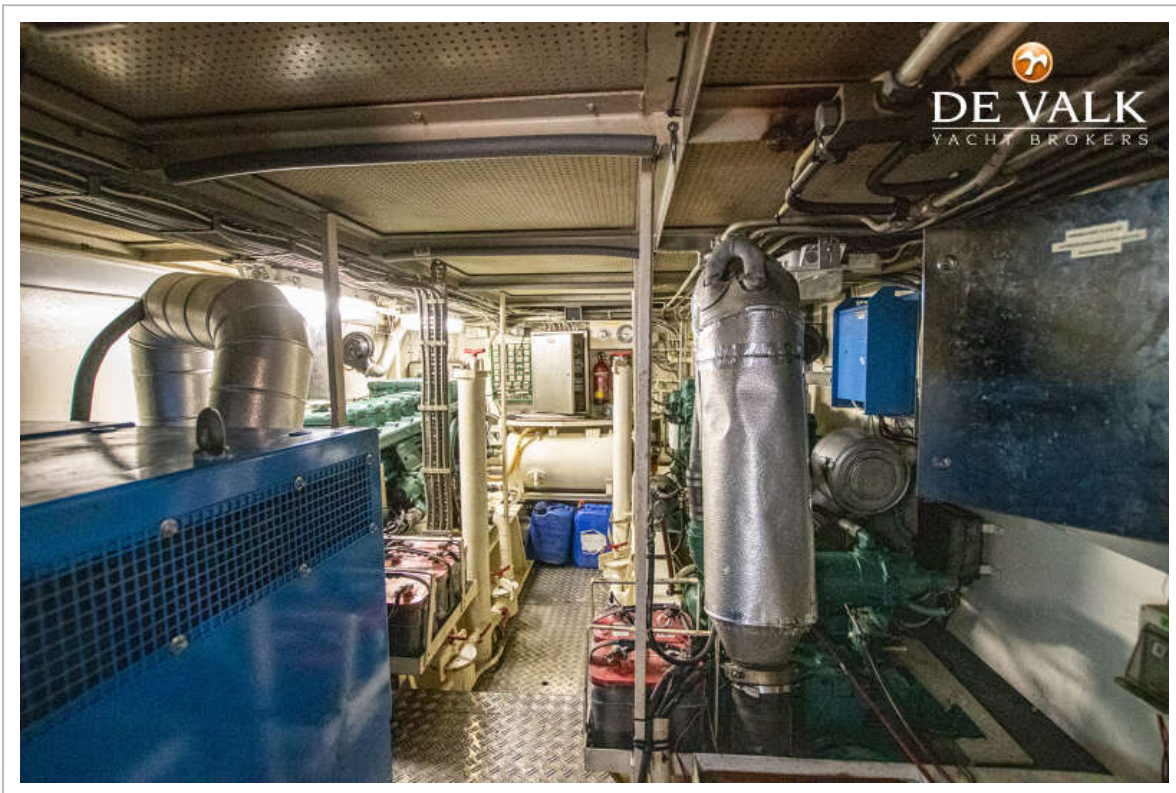
GILLISSEN KOTTER 1800



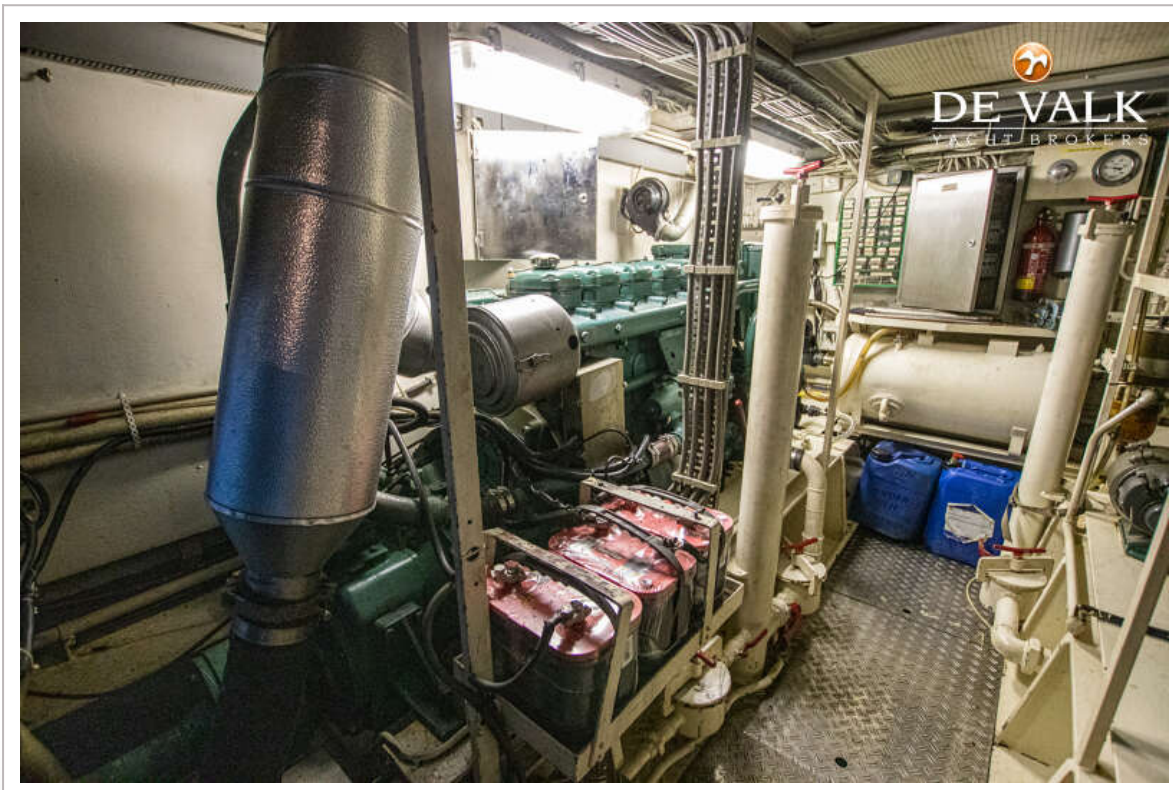
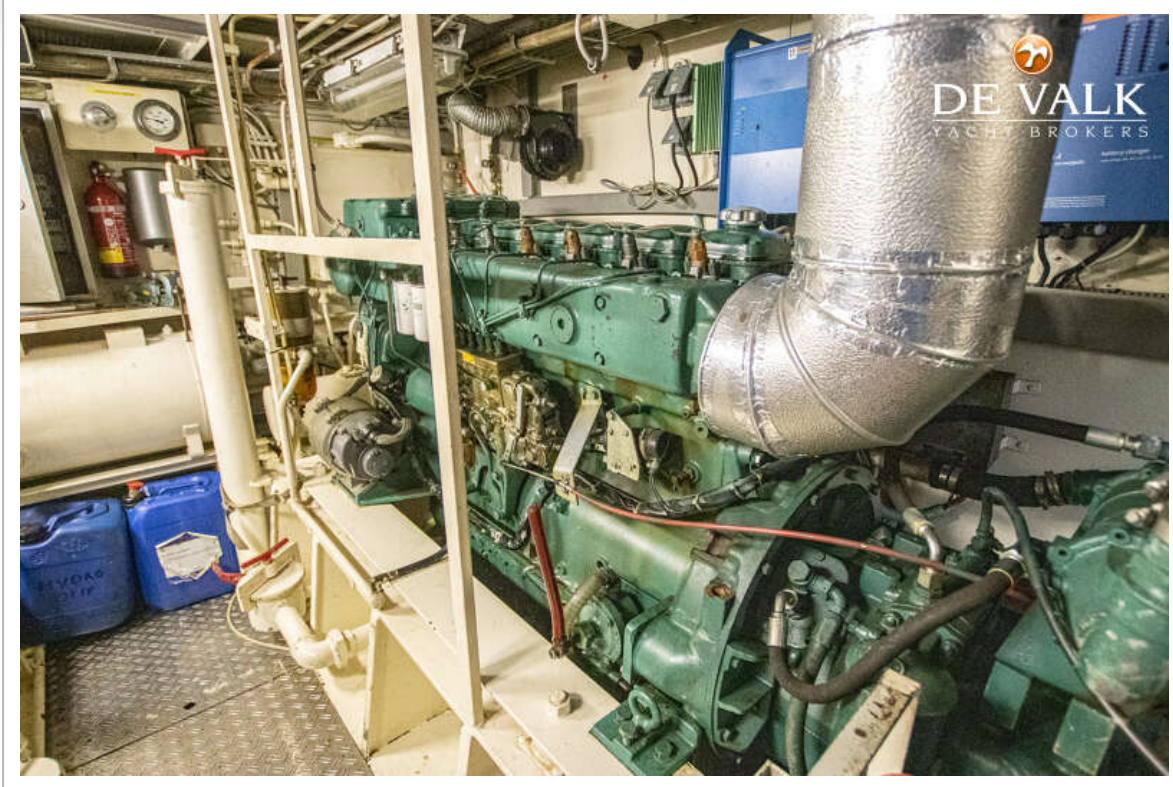
GILLISSEN KOTTER 1800



GILLISSEN KOTTER 1800



GILLISSEN KOTTER 1800



GILLISSEN KOTTER 1800



