



DE VALK  
YACHT BROKERS



X-YACHTS X-612



DE VALK  
YACHT BROKERS

BROKERAGE | CHARTER | BERTHS | FINANCE | INSURANCE | YACHT MANAGEMENT

# X-YACHTS X-612

## BROKER'S COMMENTS

This X-612, with its powerful design, is the combination of luxury and performance. Constructed in 1995, this solid yacht is ideal for competitions or for sailing blue waters, with first class navigation and high speed. Refitted during 2022-2023 (invoices available). Feel free to make an appointment to come visit it!

*Chuny Bermúdez de Castro*

## SPECIFICATIONS

<b>Dimensions</b>	18.29 x 5.10 x 2.80 (m)	<b>Builder</b>	X-YACHTS
<b>Built</b>	1995	<b>Cabins</b>	4
<b>Material</b>	GRP	<b>Berths</b>	13
<b>Engine(s)</b>	1 x YANMAR 4LH-TE diesel	<b>Hp/Kw</b>	110.00 (hp), 80.96 (kw)
<b>Asking price</b>	€ 245.000 (VAT )	<b>Lying</b>	

## CONTACT

<b>Sales office</b>	De Valk A Coruña	<b>Telephone</b>	+34 881 800 469
<b>Address</b>	MARINA CORUÑA VARADERO - Dársena Deportiva Faro de Oza s/n  15006 A Coruña  ES	<b>E-mail</b>	acoruna@devalk.nl

## DISCLAIMER

These particulars are given in good faith as supplied but cannot be guaranteed.



# X-YACHTS X-612

## GENERAL

Model	X-YACHTS X-612
Type	sailing yacht
LOA (m)	18,29
LWL (m)	15,87
Beam (m)	5,10
Draft (m)	2,80
Air draft (m)	2,22
Headroom (m)	1,95
Year built	1995
Builder	X-YACHTS
Country	Denmark
Designer	Niels Jeppesen
Displacement (t)	21,5
Ballast (tonnes)	9,01
CE norm	NA
Hull material	GRP
Hull colour	white
Hull thickness (mm)	Core material is 25mm
Keel type	Antimony hardened lead keel with cast iron top flange
Deck material	GRP
Deck finish	non-skid moulded in
Cockpit deck finish	teak
Antifouling (year)	2022
Fuel tank (litre)	Cleaned 2022
Fuel tank 2 (litre)	Cleaned 2022
Level indicator (fuel tank)	3
Fuel daytank (litre)	yes
Freshwater tank (litre)	yes
Greywater tank (litre)	yes
Wheel steering	Double



## ACCOMMODATION

Cabins	4
Berths	13
Crew cabin	4
Crew berths	13
Interior	American maple
Floor	parquet
Open cockpit	yes
Saloon	yes
Headroom saloon (m)	1,95
Heating	Wiring renewed 2022
Chart table	yes
Aft Cabin	yes
Dinette	yes
Opening door to cockpit	yes
Opening door to aft deck	yes
Galley	yes
Countertop	yes
Sink	yes
Cooker	yes
Oven	Wiring renewed 2022
Extractor	yes
Fridge	yes
Owners cabin	double bed + single bed
Wardrobe	drawers and shelves
Bathroom	shared
Toilet	shared
Toilet system	manual
Guest cabin 1	double bed + single bed
Wardrobe	drawers and shelves
Bathroom	en suite



# X-YACHTS X-612

Toilet	shared
Guest cabin 2	bunk bed
Wardrobe	drawers
Bathroom	en suite
Toilet	shared
Guest cabin 3	bunk bed
Wardrobe	drawers
Bathroom	yes
Toilet	shared

## MACHINERY

No of engines	1
Make	YANMAR
Type	4LH-TE
HP	110
kW	80.96
Fuel	diesel
Year of overhaul	yes
Saildrive seal	yes
Propeller type	folding
Manual bilge pump	yes
Electric bilge pump	yes
Batteries	yes
Battery monitor	Victron energy
Battery charger	Wiring renewed 2022 2 Dolphin premium 12v/24v (2022)
Inverter	yes

## NAVIGATION

Compass	yes
Depth sounder	Raymarine tridata
Log	yes



VHF	yes
VHF handheld	yes
Radar	yes
Plotter	B&G Zeus 3S 9 (2022)
Radar/plotter	yes
AIS receiver	yes
AIS transponder	yes
Navigation lights	Combined

## EQUIPMENT

Bathing platform	yes
Anchor	yes
Anchor chain	yes
Chain counter	yes
Windlass	yes
Pulpit	yes
Life raft	yes
Lifejackets	yes
Safety harness	yes
Lifebuoy	yes
Fire extinguisher	yes

## RIGGING

Rigging	sloop Matshead
Standing rigging	Rod
Mainsail	NORTH
Mainsail cover	yes
Battcars	yes
Fully battened mainsail	yes
Jib I	yes
Jib II	yes



Genoa	yes
Genoa I	yes
Genoa cover	yes
Gennaker	X2
Spinnaker	yes
Staysail	yes
Yankee	yes
Removable innerforestay	yes
Primary sheet winch	yes
Secondary sheet winch	yes
Genoa sheetwinches	yes
Halyard winches	yes
Spinnaker winch	yes
Reefing winch	yes



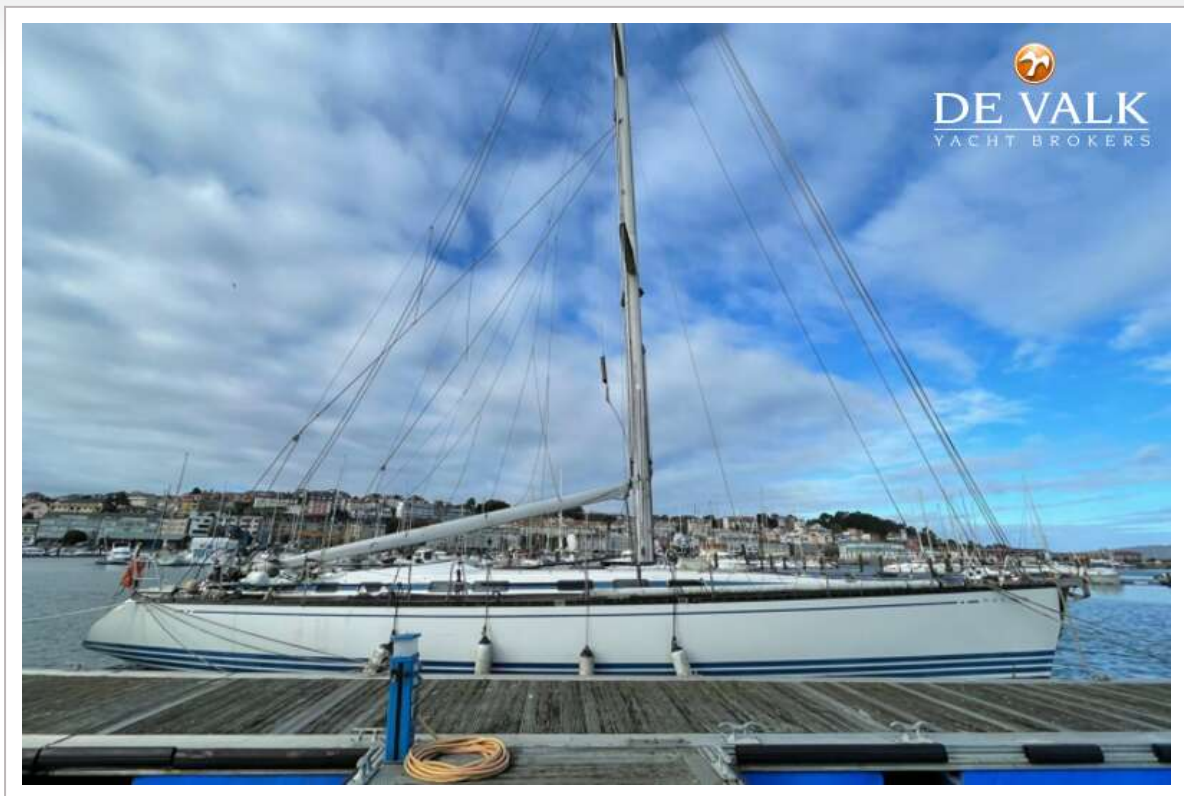


# X-YACHTS X-612





# X-YACHTS X-612



# X-YACHTS X-612

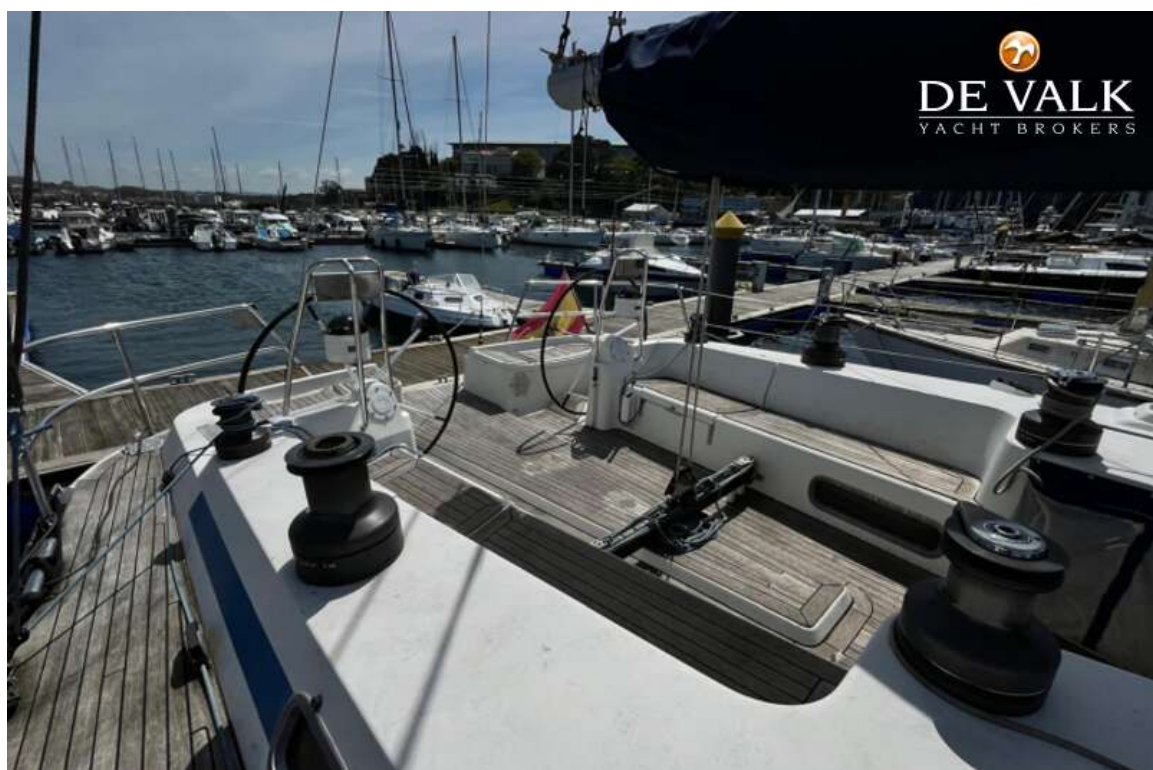




# X-YACHTS X-612

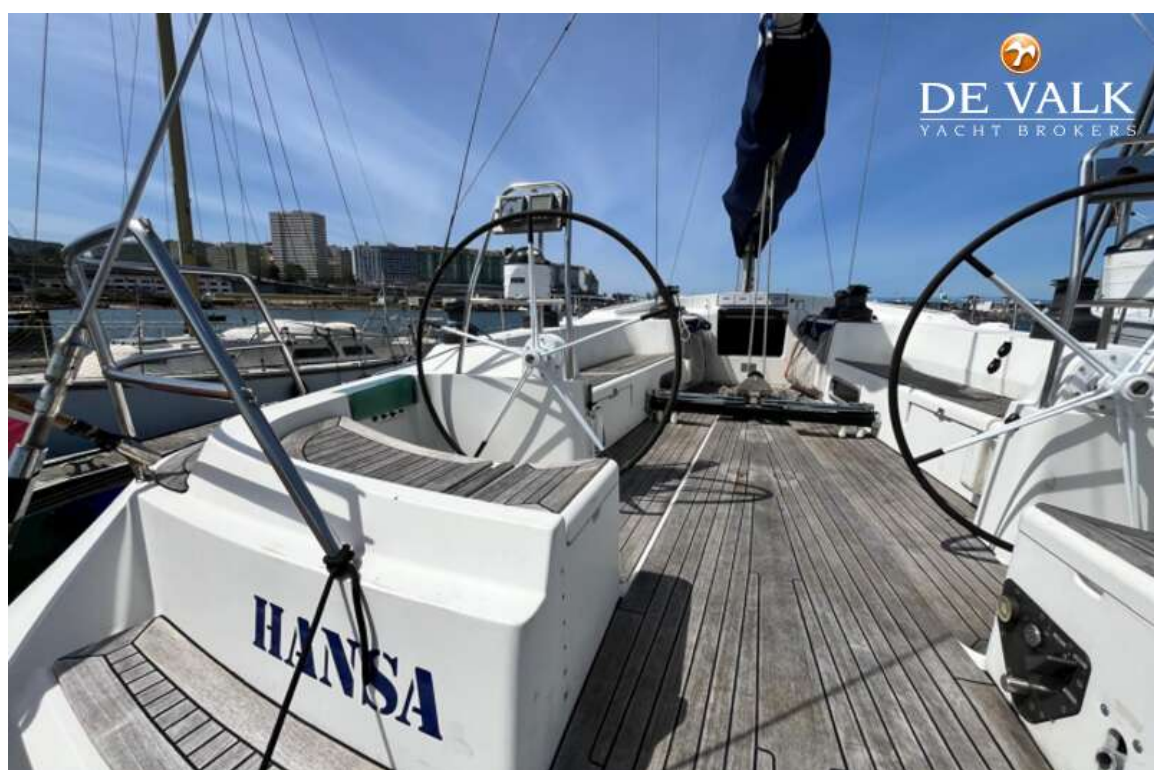
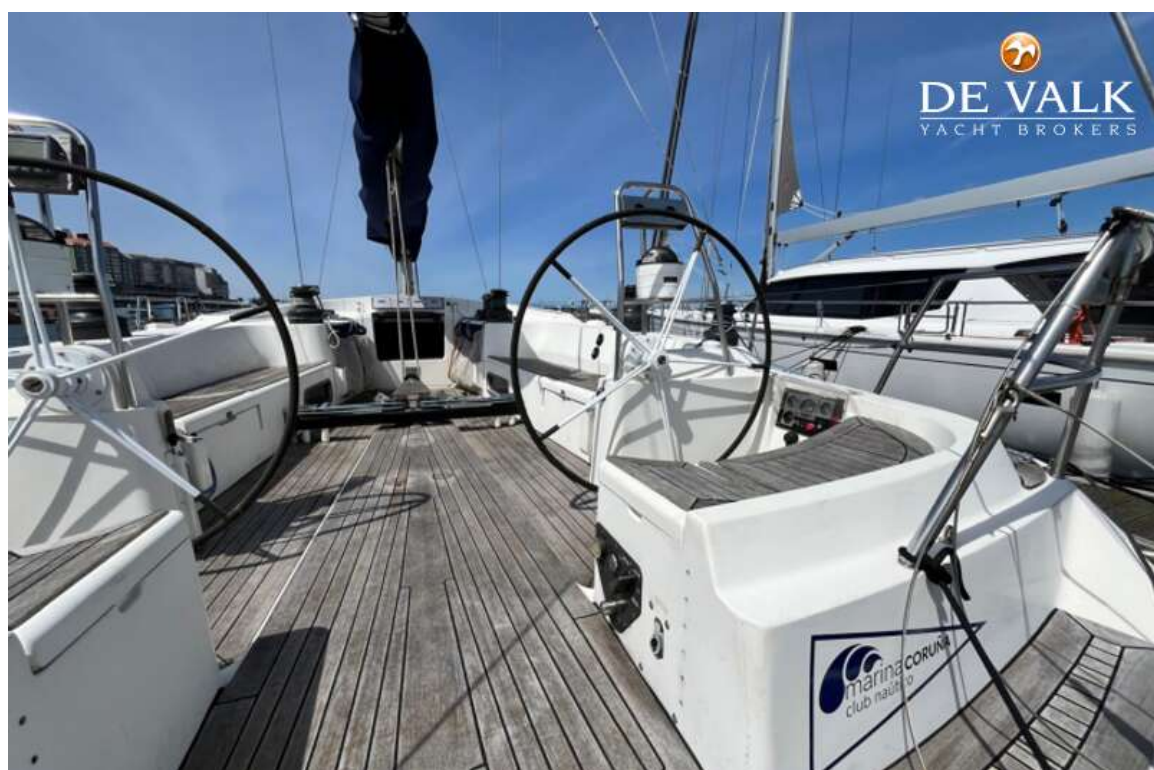


# X-YACHTS X-612



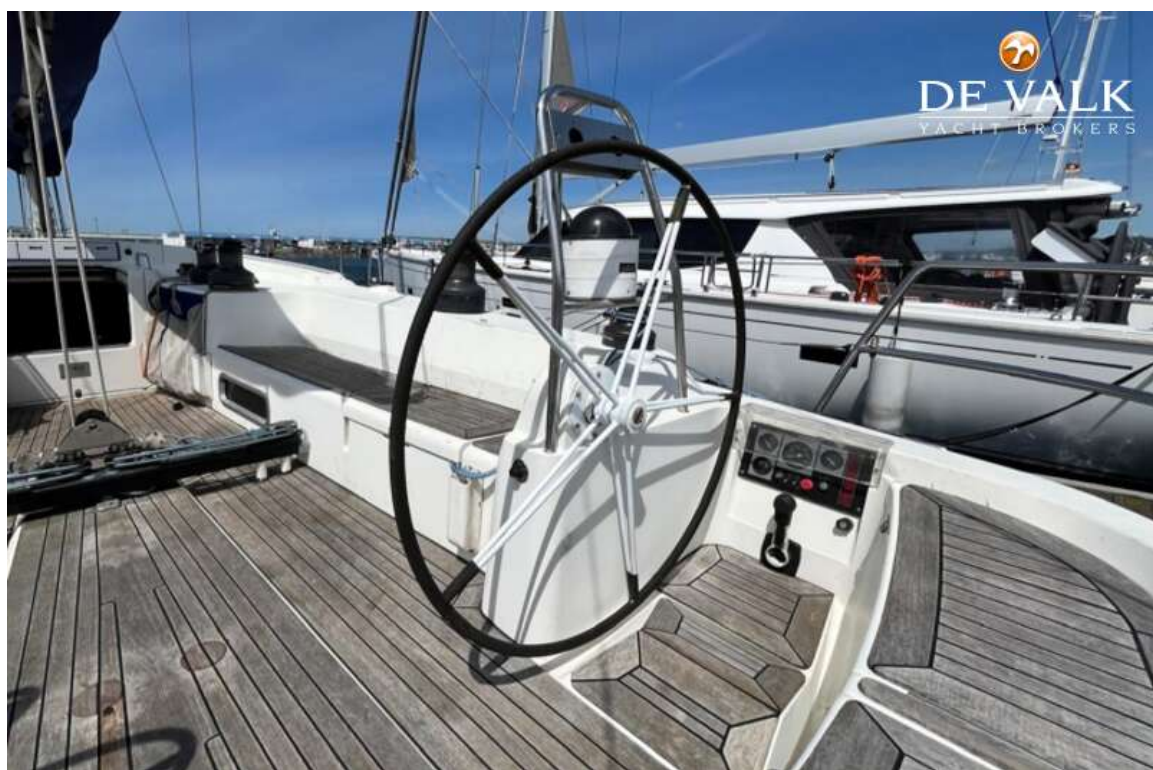


## X-YACHTS X-612



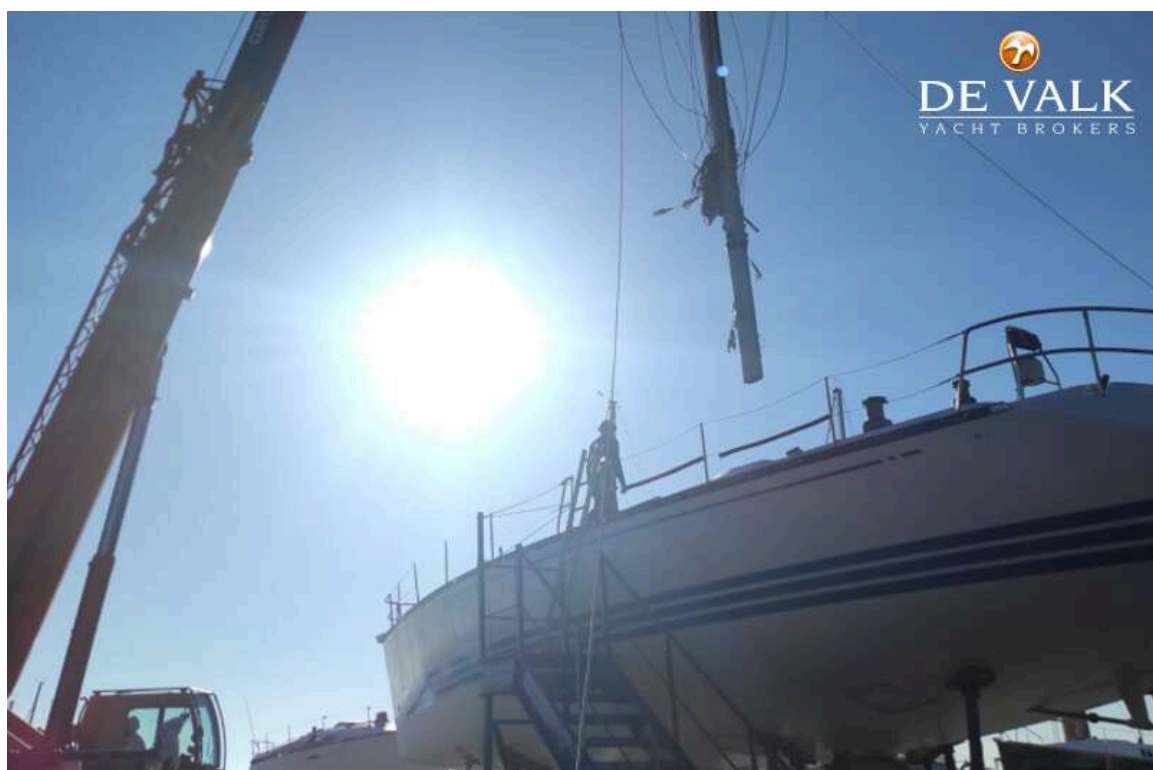


## X-YACHTS X-612





# X-YACHTS X-612



# X-YACHTS X-612





# X-YACHTS X-612

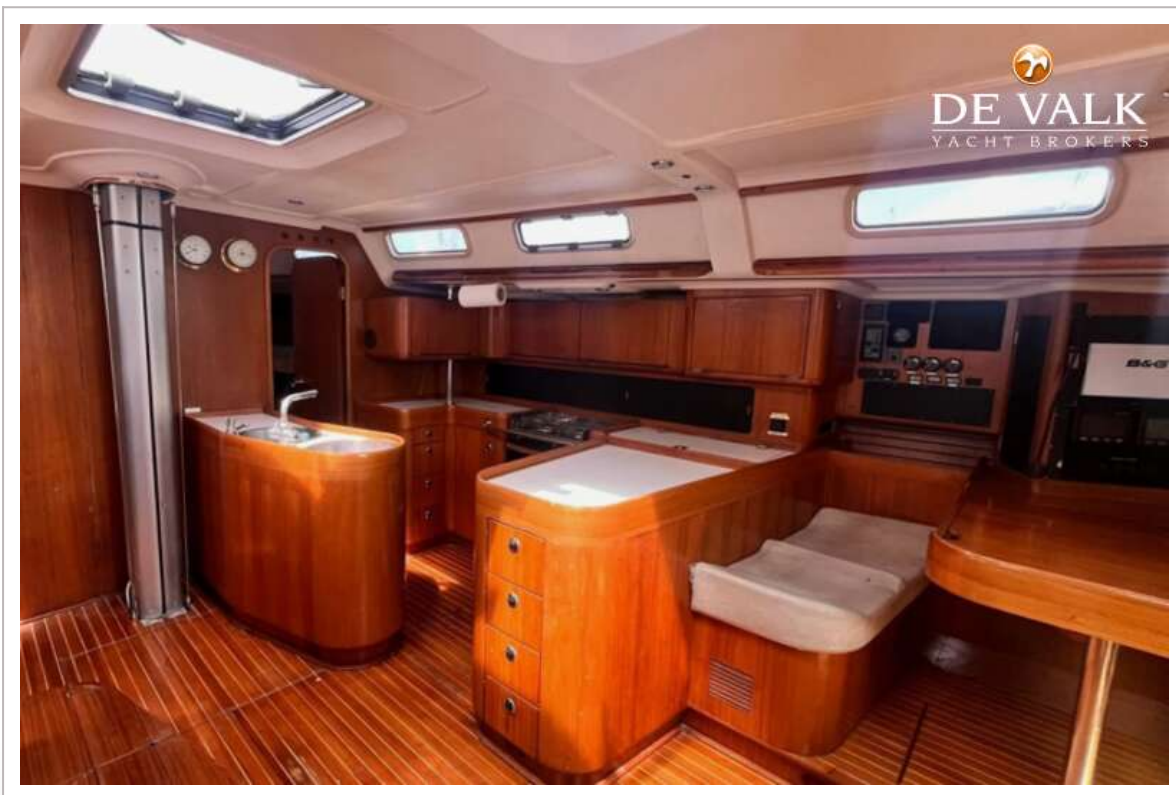


## X-YACHTS X-612

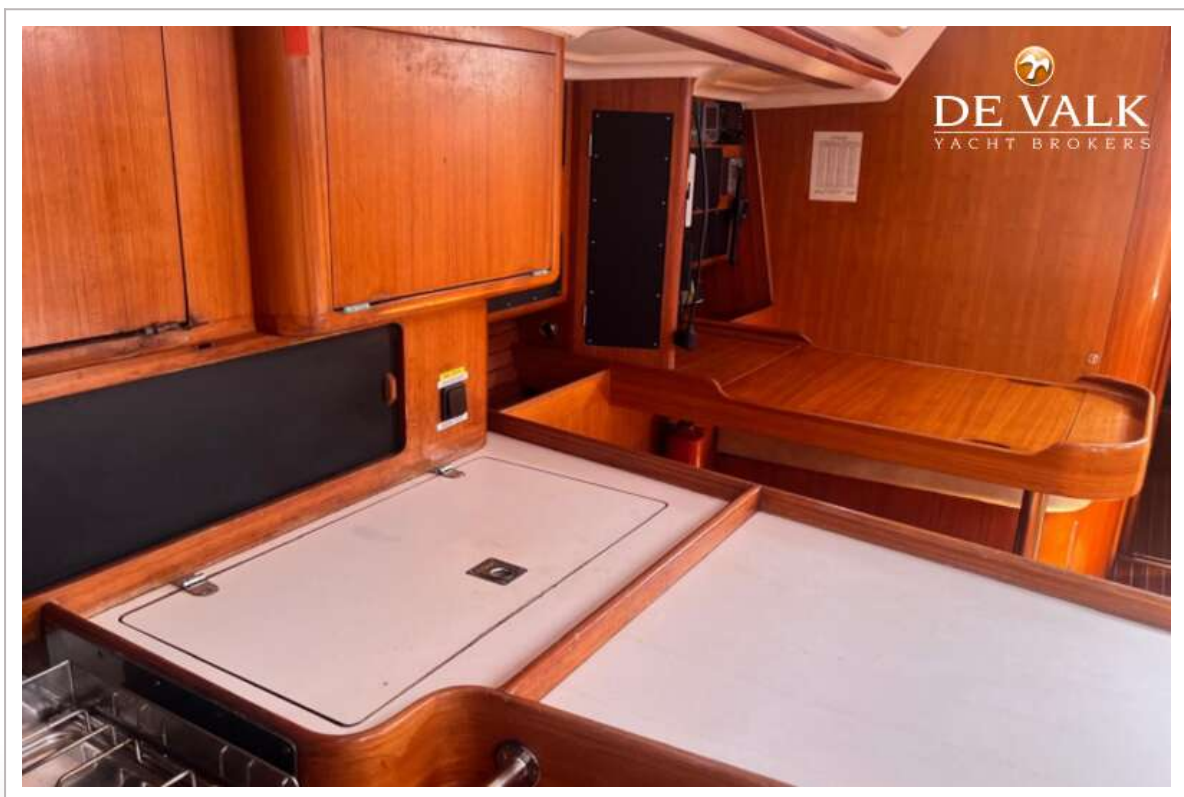




## X-YACHTS X-612

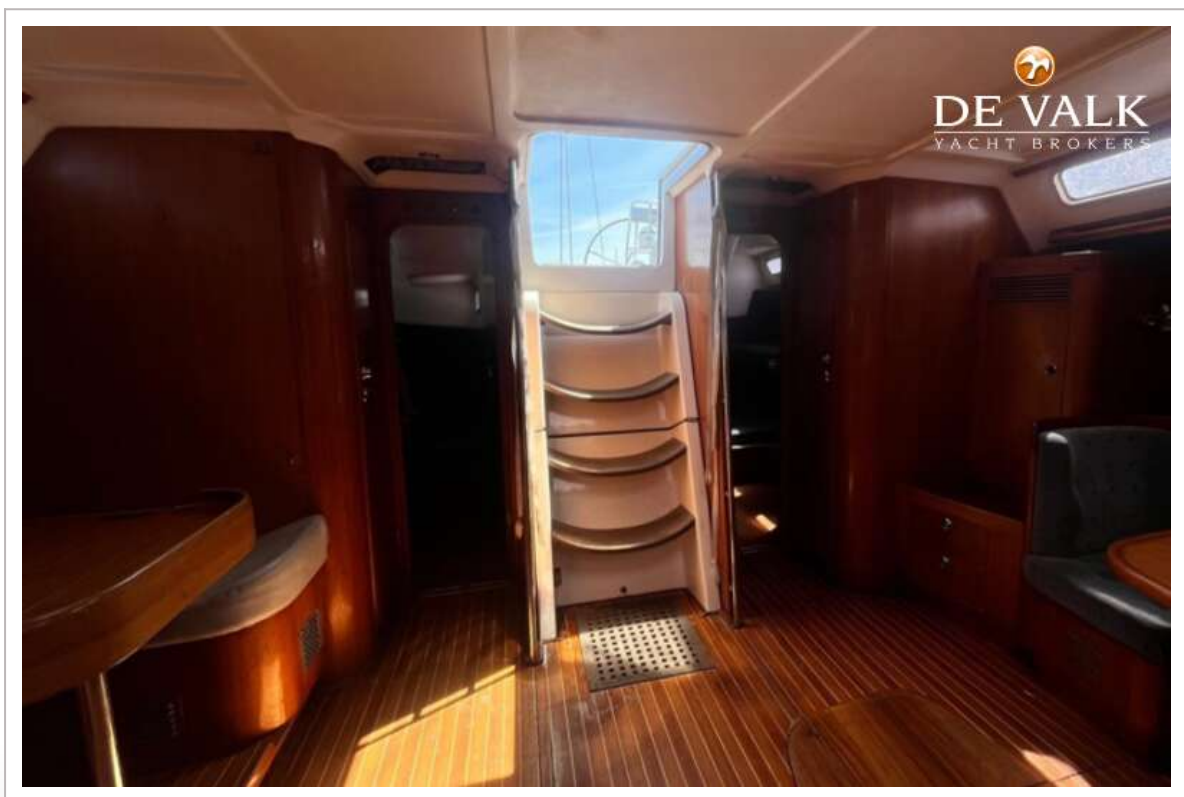


## X-YACHTS X-612

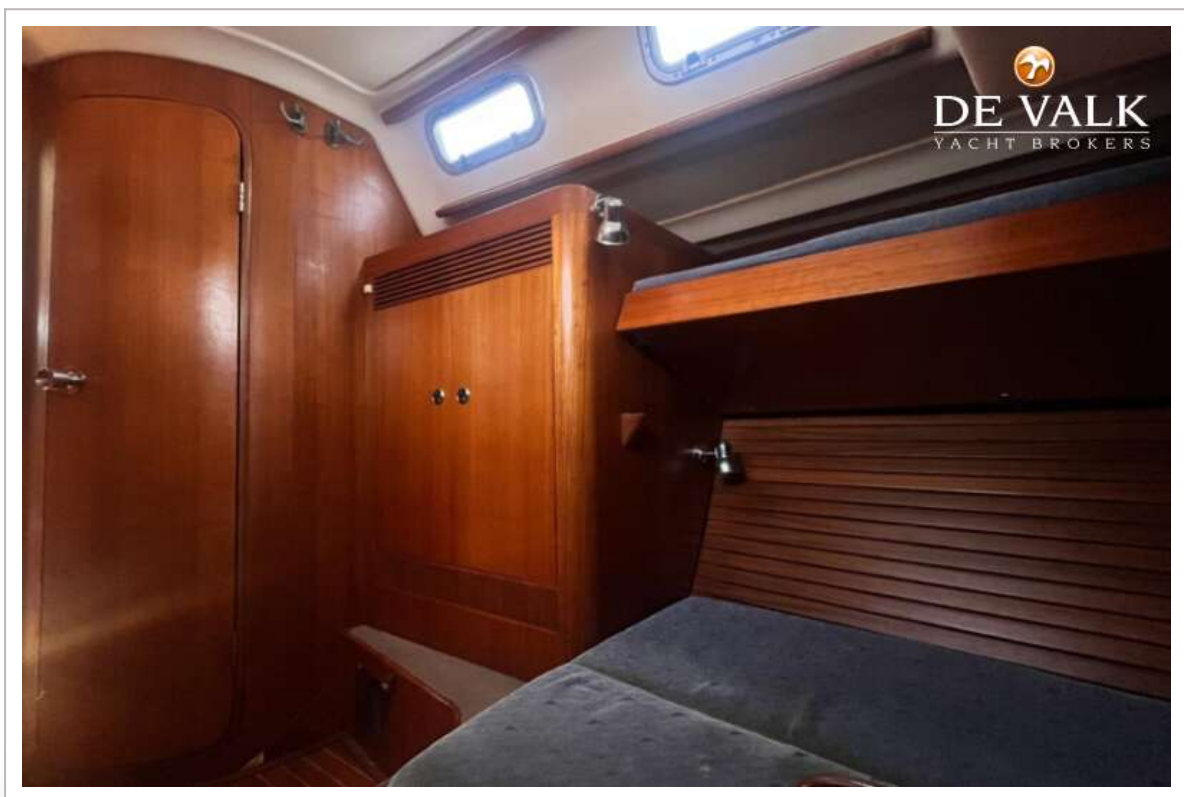
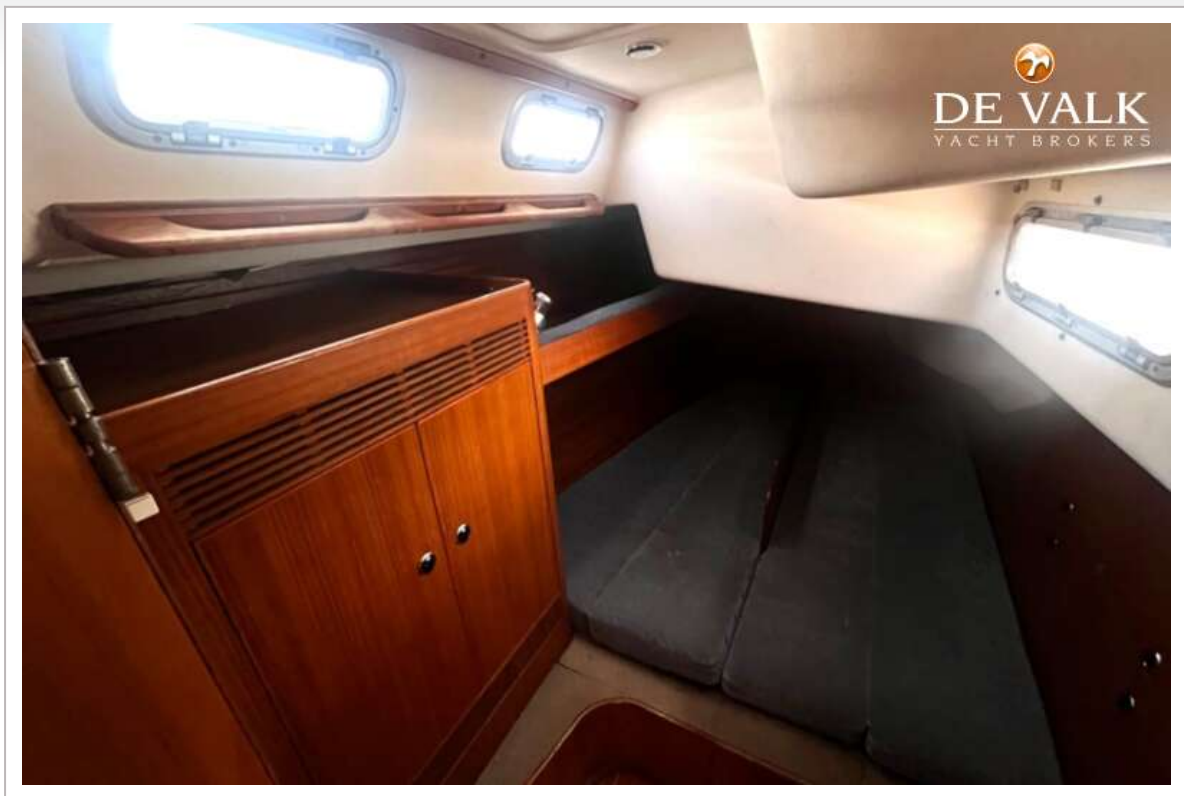




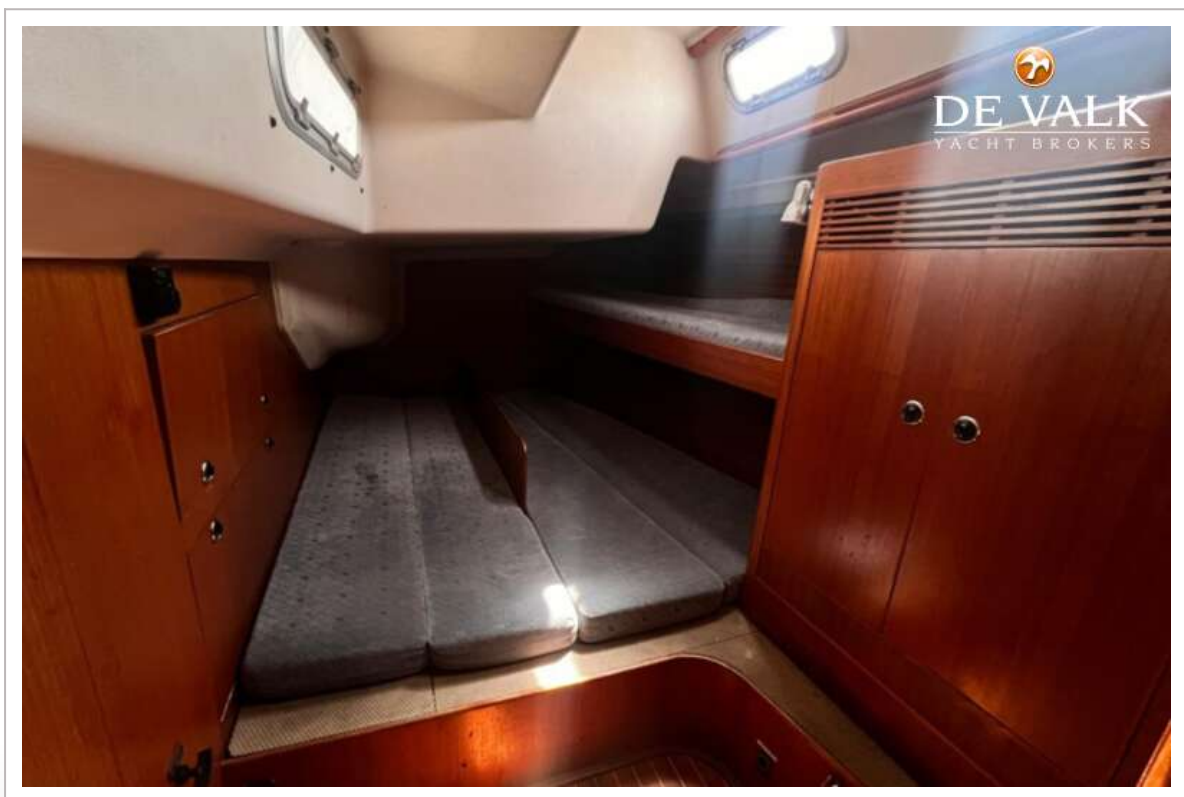
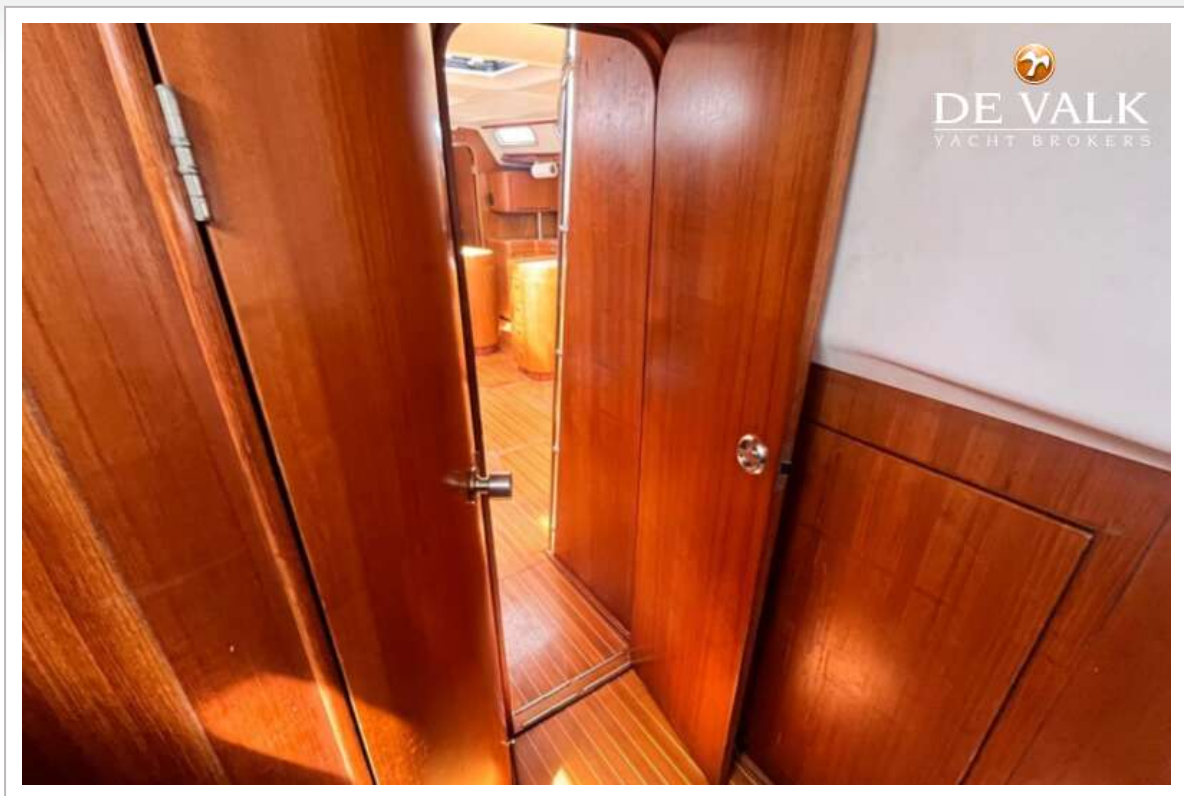
# X-YACHTS X-612



# X-YACHTS X-612



## X-YACHTS X-612





## X-YACHTS X-612

