



BAVARIA CRUISER 33



BAVARIA CRUISER 33

BROKER'S COMMENTS

Launched in 2015 and now offered again, this very spacious and well maintained sailing yacht. The Bavaria Cruiser 33 is the ideal yacht for larger trips or just to enjoy sailing on local waters. The Bavaria 33 Cruiser offers both privacy and extra comfort due to the increased space it and sleek design with 2 cabins. This Bavaria Cruiser 33 is now available for viewing and admiring 7 days a week at our sales marina in Hindeloopen.

Johan Nooitgedagt

SPECIFICATIONS

Dimensions	9.99 x 3.42 x 1.50 (m)	Builder	Bavaria Giebelstadt
Built	2015	Cabins	2
Material	GRP	Berths	5
Engine(s)	1 x Volvo Penta D1-20 diesel	Hp/Kw	19.00 (hp), 13.98 (kw)
Asking price	sold (VAT)	Lying	contact Hindeloopen

CONTACT

Sales office	De Valk Hindeloopen B.V.	Telephone	+31 514 52 40 00
Address	Oosterstrand 1 8713 JS Hindeloopen NL	E-mail	hindeloopen@devalk.nl

DISCLAIMER

These particulars are given in good faith as supplied but cannot be guaranteed.



BAVARIA CRUISER 33

GENERAL

Model	BAVARIA CRUISER 33
Type	sailing yacht
LOA (m)	9,99
LWL (m)	8,85
Beam (m)	3,42
Draft (m)	1,50
Air draft (m)	14,85
Headroom (m)	1,85
Year built	2015
Builder	Bavaria Giebelstadt
Country	Germany
Displacement (t)	5,4
Ballast (tonnes)	cast iron 1.5
CE norm	A
Hull material	GRP
Hull colour	white
Hull shape	round-bilged
Keel type	fin keel
Superstructure material	GRP
Rubbing strake	yes
Deck finish	non-skid moulded in
Superstructure deck finish	non-skid moulded in
Cockpit deck finish	teak
Antifouling (year)	2023
Window material	polycarbonate
Deckhatch	3
Fuel tank (litre)	polyethylene 150
Level indicator (fuel tank)	yes
Freshwater tank (litre)	150
Blackwater tank (litre)	70



Wheel steering	mechanical
Emergency tiller	yes

ACCOMMODATION

Cabins	2
Berths	5
Interior	mahogany
Layout	yes
Floor	woodprint
Open cockpit	yes
Aft deck	yes
Heating	Webasto
Aft Cabin	yes
Galley	yes
Countertop	corian
Sink	stainless steel
Cooker	2 Burner
Oven	yes
Fridge	Isotherm
Hot water system	Boiler
Water pressure system	electrical
Kettle	yes
Crockery	yes
Owners cabin	v-bed Front
Bed length (m)	2.0
Wardrobe	hanging and shelves
Bathroom	shared
Toilet	shared
Toilet system	manual
Wash basin	at the toilet
Shower	shared



BAVARIA CRUISER 33

Guest cabin 1	double bed Rear
Bed length (m)	2.0
Wardrobe	hanging and shelves

MACHINERY

No of engines	1
Make	Volvo Penta
Type	D1-20
HP	19
kW	13.98
Fuel	diesel
Maximum speed (kn)	6
Cruising speed (kn)	5
Consumption (l/hr)	3
Engine hours	2002,8
Engine cooling system	freshwater heat exchanger
Drive	sail-drive
Engine controls	bowden cable
Gearbox	mechanical
Exhaust	watercooled
Propeller type	fixed
Propeller blades	2
Electrical installation	yes
Batteries	2x Varta 90 Ah
Start battery	yes
Service battery	yes
Battery charger	Crista GPS3 40Amp
Shorepower	with cable

NAVIGATION

Compass	Plastimo
---------	----------



BAVARIA CRUISER 33

Depth sounder	Garmin
Log	Garmin
Windset	Does not work
VHF	Advanseae FX-400
Plotter	Advanseae C5.6

EQUIPMENT

Sprayhood	yes
Cockpit table	yes
Boarding ladder	stainless steel
Anchor	CQR Plough
Sea railing	wire
Railing side opening gates	yes
Pushpit	yes
Pulpit	yes
Fenders	yes
Mooring lines	yes
Radio-cd player	Blaupunkt Alicante 170
Speakers in salon	yes
Speakers in cabin	yes
Fire extinguisher	3

RIGGING

Rigging	sloop
Standing rigging	wire
Brand mast	Seldén
Material mast	aluminium
Spreaders	2 pair
Mainsail	yes
Stoway mast	yes
Jib	yes



Reefing System	main in-mast furling
Backstay adjuster	mechanical
Boomvang	mechanical
Primary sheet winch	2x Lewmar ST 15
Genoa sheetwinches	2x Lewmar ST30
Multifunctional winches	Lewmar ST15



BAVARIA CRUISER 33



BAVARIA CRUISER 33



BAVARIA CRUISER 33



BAVARIA CRUISER 33



BAVARIA CRUISER 33



BAVARIA CRUISER 33



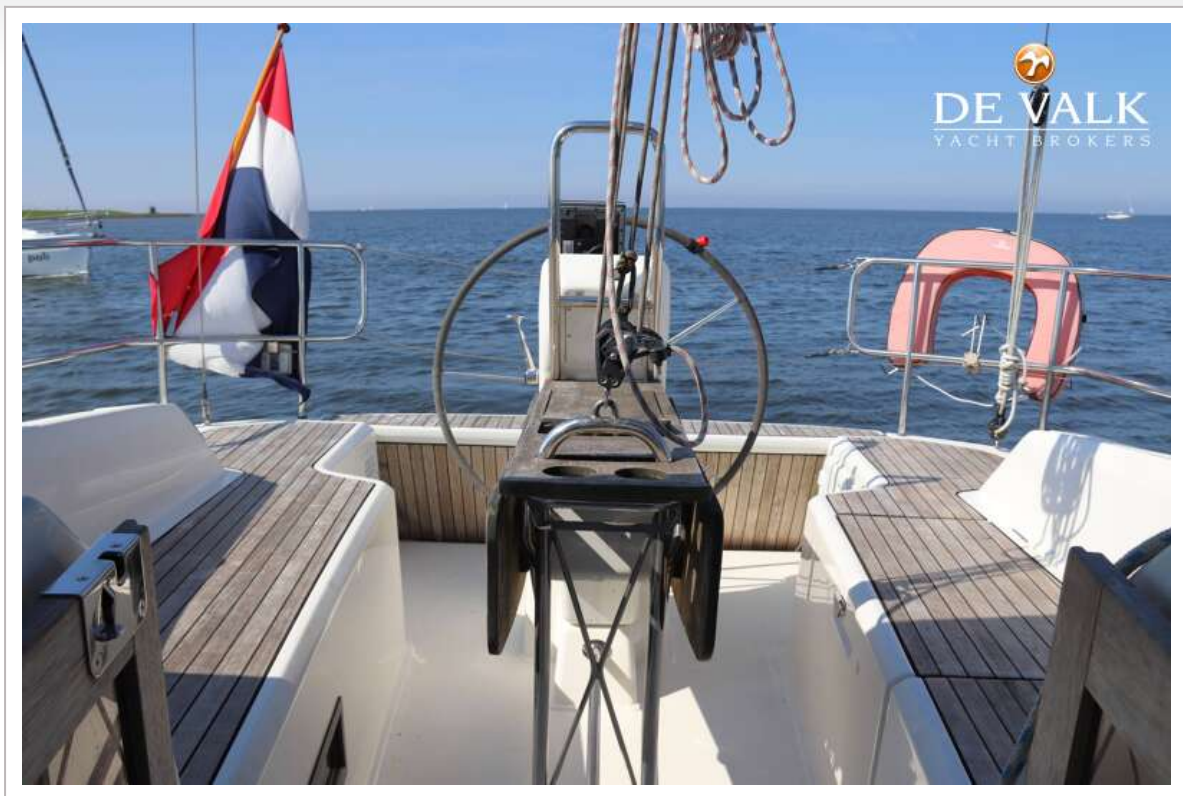
BAVARIA CRUISER 33



BAVARIA CRUISER 33



BAVARIA CRUISER 33



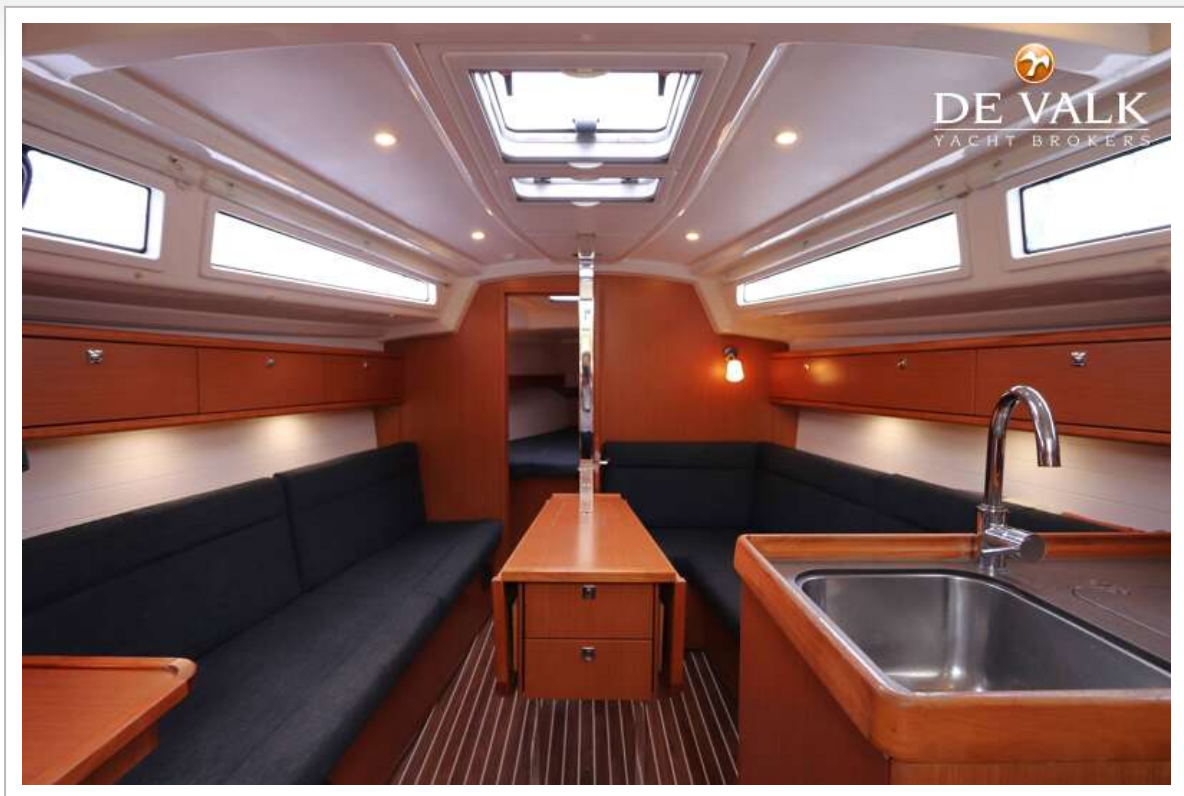
BAVARIA CRUISER 33



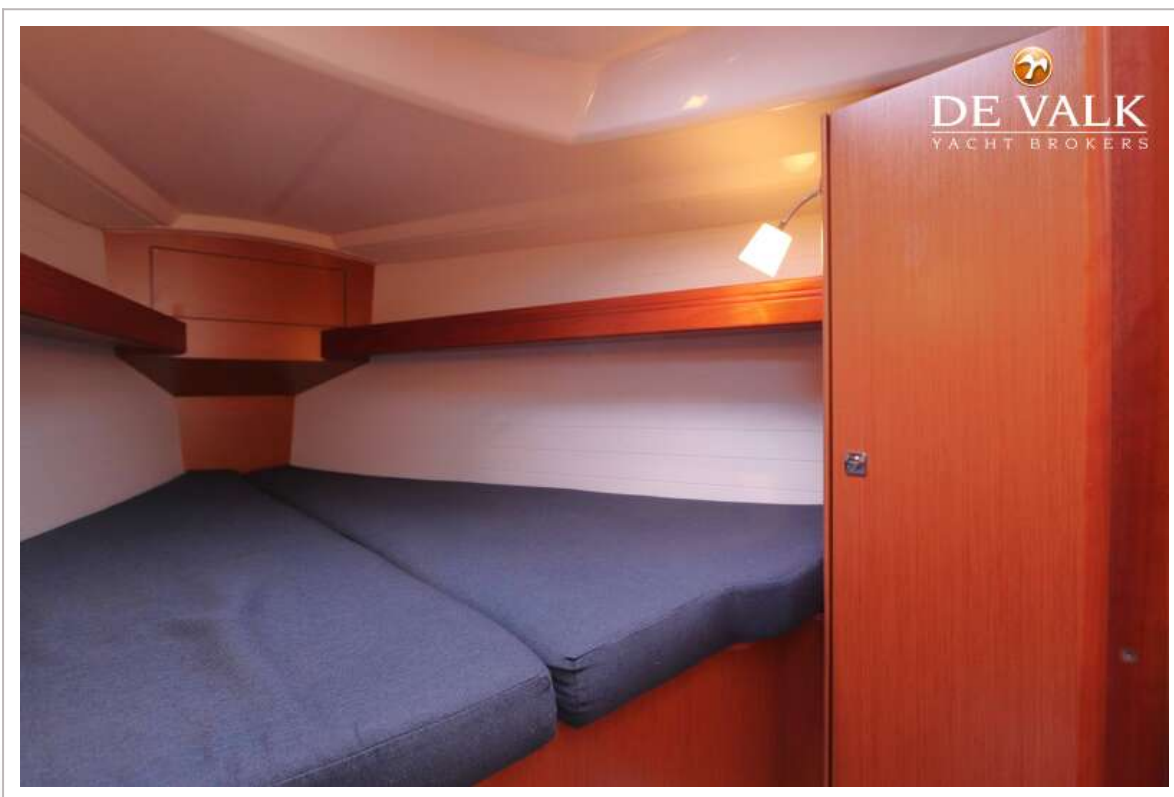
BAVARIA CRUISER 33



BAVARIA CRUISER 33



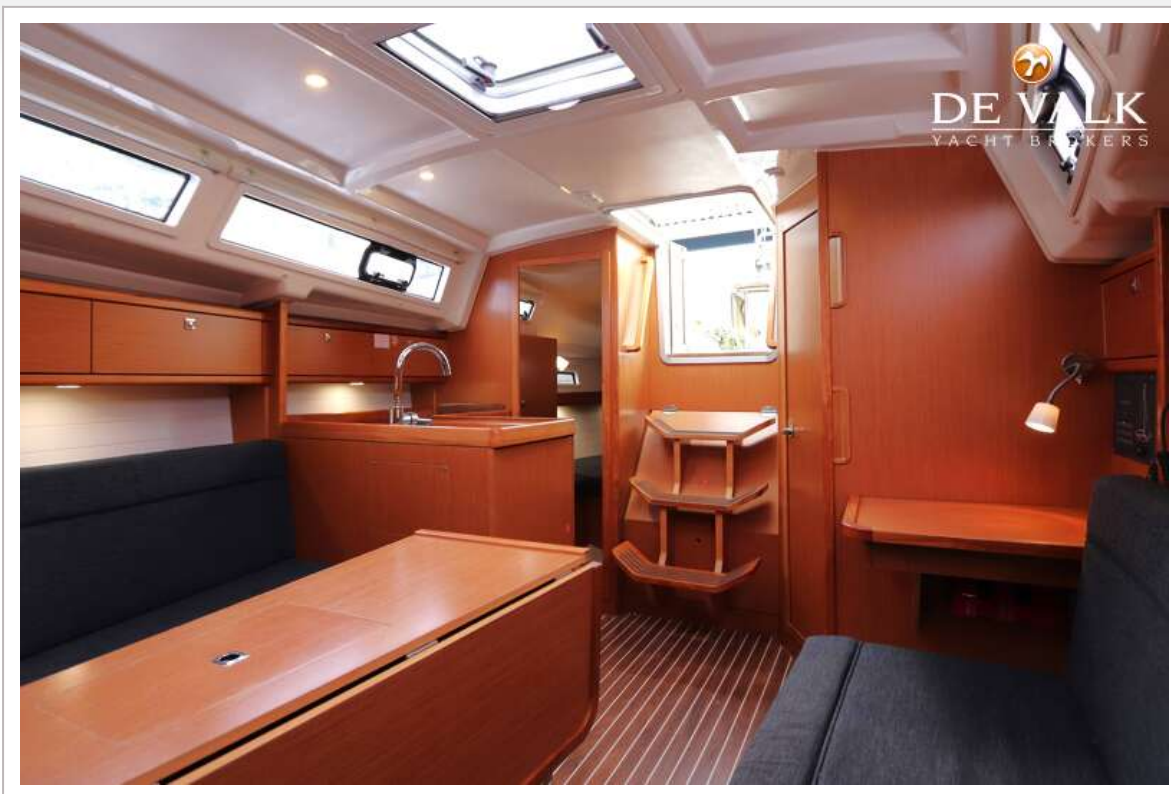
BAVARIA CRUISER 33



BAVARIA CRUISER 33



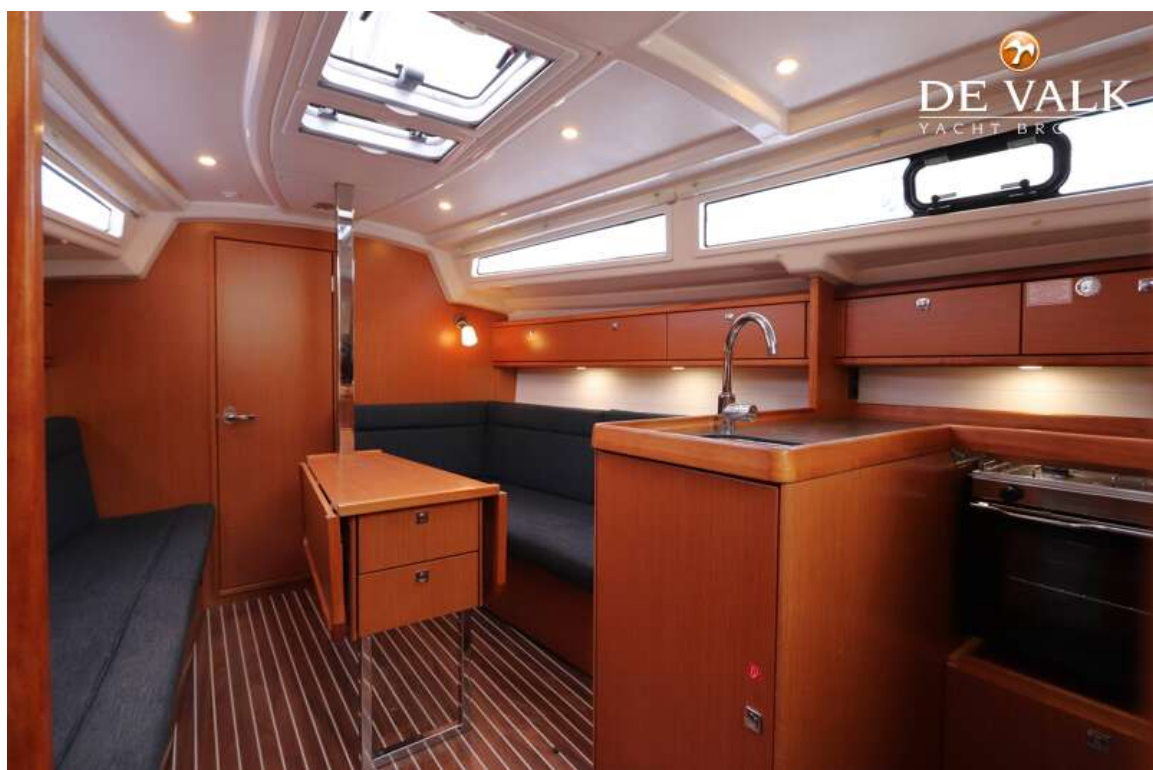
BAVARIA CRUISER 33



BAVARIA CRUISER 33



BAVARIA CRUISER 33



BAVARIA CRUISER 33



BAVARIA CRUISER 33

