



DE VALK
YACHT BROKERS



BAVARIA CRUISER 34



DE VALK
YACHT BROKERS

BAVARIA CRUISER 34

BROKER'S COMMENTS

Launched in 2018 and now offered, this very spacious and well-maintained sailing yacht. The Bavaria Cruiser 34 is the ideal yacht for larger trips or just for enjoyable sailing on local waters. The Bavaria Cruiser 34 offers both privacy and extra comfort due to its larger space and sleek design with 2 cabins. This Bavaria Cruiser 34 can be viewed and admired 7 days a week from 1 September 2024 at our sales marina in Hindeloopen.

Johan Nooitgedagt

SPECIFICATIONS

Dimensions	9.99 x 3.42 x 1.50 (m)	Builder	Bavaria Yachts, Giebelstadt
Built	2018	Cabins	2
Material	GRP	Berths	5
Engine(s)	1 x Volvo Penta D1-20F diesel	Hp/Kw	20.00 (hp), 14.72 (kw)
Asking price	sold (VAT)	Lying	contact Hindeloopen

CONTACT

Sales office	De Valk Hindeloopen B.V.	Telephone	+31 514 52 40 00
Address	Oosterstrand 1 8713 JS Hindeloopen NL	E-mail	hindeloopen@devalk.nl

DISCLAIMER

These particulars are given in good faith as supplied but cannot be guaranteed.



BAVARIA CRUISER 34

GENERAL

Model	BAVARIA CRUISER 34
Type	sailing yacht
LOA (m)	9,99
LWL (m)	9,15
Beam (m)	3,42
Draft (m)	1,50
Air draft (m)	14,85
Headroom (m)	1,85
Year built	2018
Launched	2018
Builder	Bavaria Yachts, Giebelstadt
Country	Germany
Designer	Farr Yacht Design
Displacement (t)	5,3
Ballast (tonnes)	cast iron 1,4
CE norm	A
Hull material	GRP
Hull colour	white
Hull shape	round-bilged
Keel type	fin keel
Superstructure material	GRP
Rubbing strake	aluminum
Deck material	GRP
Deck finish	non-skid moulded in
Superstructure deck finish	non-skid moulded in
Cockpit deck finish	teak
Antifouling (year)	2024
Window material	polycarbonate
Deckhatch	3
Fuel tank (litre)	polyethylene 150



BAVARIA CRUISER 34

Level indicator (fuel tank)	yes
Freshwater tank (litre)	polyethylene 150
Level indicator (freshwater)	yes
Blackwater tank (litre)	polyethylene 65
Blackwater tank extraction	deck extraction
Wheel steering	mechanical
Emergency tiller	yes

ACCOMMODATION

Cabins	2
Berths	5
Interior	mahogany
Floor	woodprint
Open cockpit	yes
Saloon	yes
Headroom saloon (m)	1,85
Heating	diesel ducted hot air Webasto
Chart table	yes
Aft Cabin	yes
Galley	yes
Countertop	corian
Sink	stainless steel
Cooker	calor gas 2 burner
Oven	Alpa
Fridge	Isotherm
Hot water system	220V + engine
Water pressure system	electrical
Crockery	yes
Owners cabin	v-bed Front
Bed length (m)	2,00
Wardrobe	hanging and shelves



BAVARIA CRUISER 34

Bathroom	shared
Toilet	shared
Toilet system	manual Jabsco
Wash basin	in the bathroom
Shower	shared
Guest cabin 1	double bed Rear
Bed length (m)	2,0
Wardrobe	hanging and shelves

MACHINERY

No of engines	1
Make	Volvo Penta
Type	D1-20F
HP	20
kW	14.72
Fuel	diesel
Maximum speed (kn)	7
Cruising speed (kn)	5
Consumption (l/hr)	3
Engine hours	1201,5
Engine cooling system	freshwater heat exchanger
Drive	sail-drive
Saildrive seal	2018
Engine controls	bowden cable
Gearbox	mechanical
Exhaust	watercooled
Propeller type	fixed
Propeller blades	2
Batteries	yes
Start battery	yes
Service battery	yes



BAVARIA CRUISER 34

Battery charger	yes
Shorepower	with cable

NAVIGATION

Compass	Plastimo
Multi control display	Garmin
Depth sounder	Garmin
Depth sounder/log	Garmin
Log	Garmin
Windset	Garmin
VHF	Advanseas FX-400
Plotter	Lowrance HDS 5m

EQUIPMENT

Sprayhood	yes
Cockpit table	yes
Bathing platform	yes
Boarding ladder	stainless steel
Anchor	Bruce
Anchor chain	10m
Sea railing	wire
Pushpit	yes
Pulpit	yes
Fenders	yes
Mooring lines	yes
Radio-cd player	Blaupunkt Madrid 200BT
Speakers in salon	yes
Fire extinguisher	yes

RIGGING



BAVARIA CRUISER 34

Rigging	sloop
Standing rigging	wire
Brand mast	Seldén
Material mast	aluminium
Spreaders	2 pair
Mainsail	22,8m ² Elvstrom
Stoway mast	yes
Genoa I	22,3m ² Elvstrom
Genoa furler	yes
Reefing System	main in-mast furling
Backstay adjuster	tackle
Boomvang	gasspring
Genoa sheetwinches	2x Lewmar ST30
Multifunctional winches	halyard/sheet winches 2x Lewmar ST15



BAVARIA CRUISER 34



BAVARIA CRUISER 34



BAVARIA CRUISER 34



BAVARIA CRUISER 34



BAVARIA CRUISER 34



BAVARIA CRUISER 34



BAVARIA CRUISER 34



BAVARIA CRUISER 34



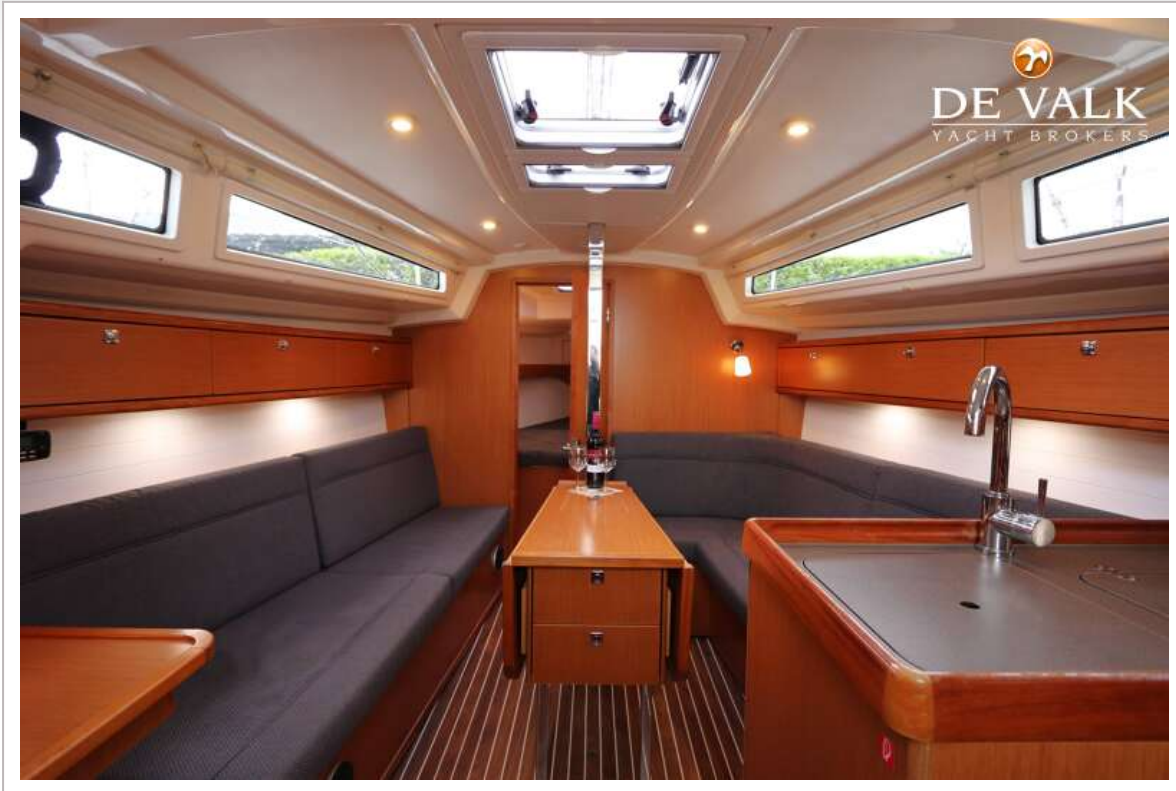
BAVARIA CRUISER 34



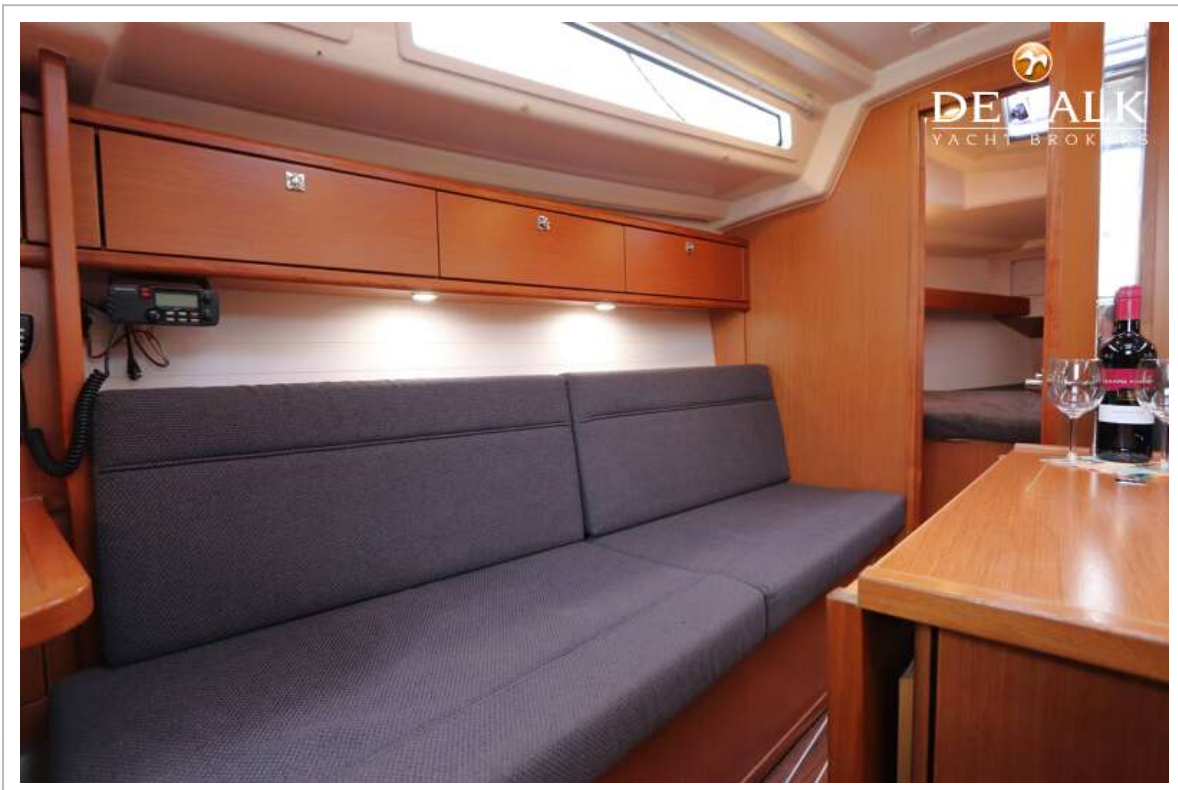
BAVARIA CRUISER 34



BAVARIA CRUISER 34



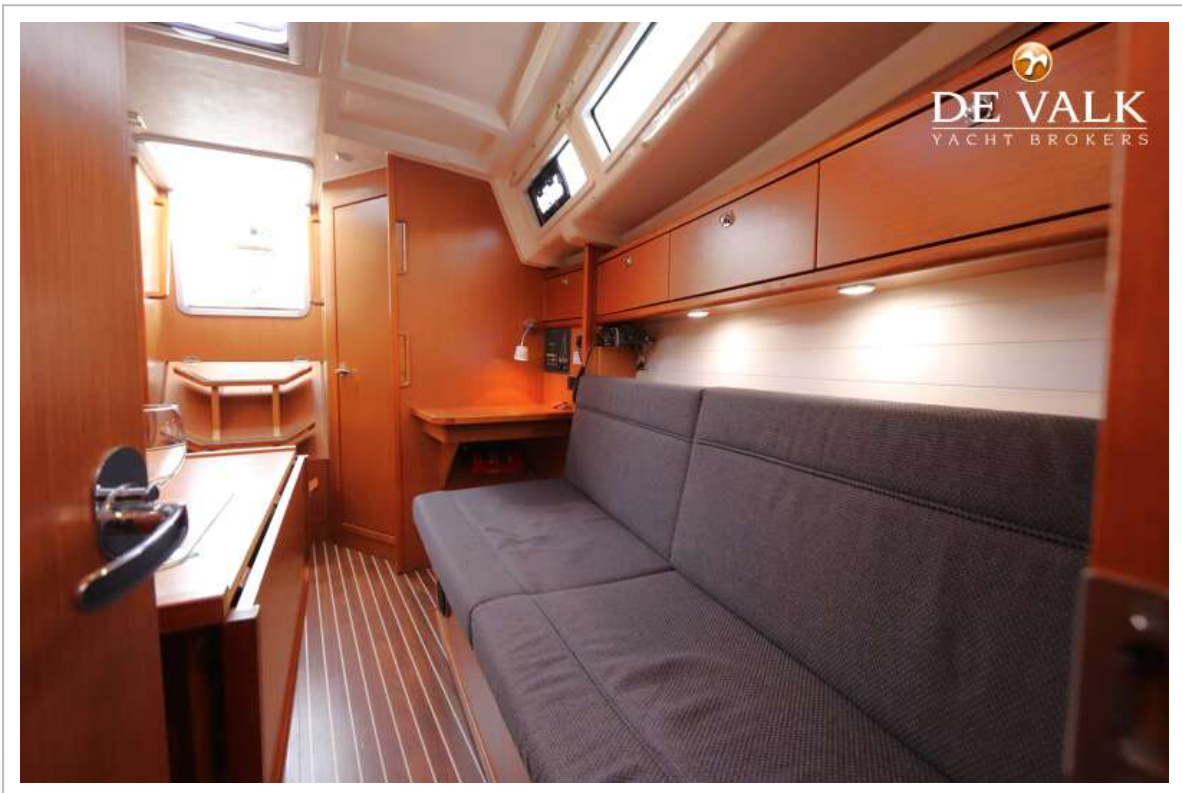
BAVARIA CRUISER 34



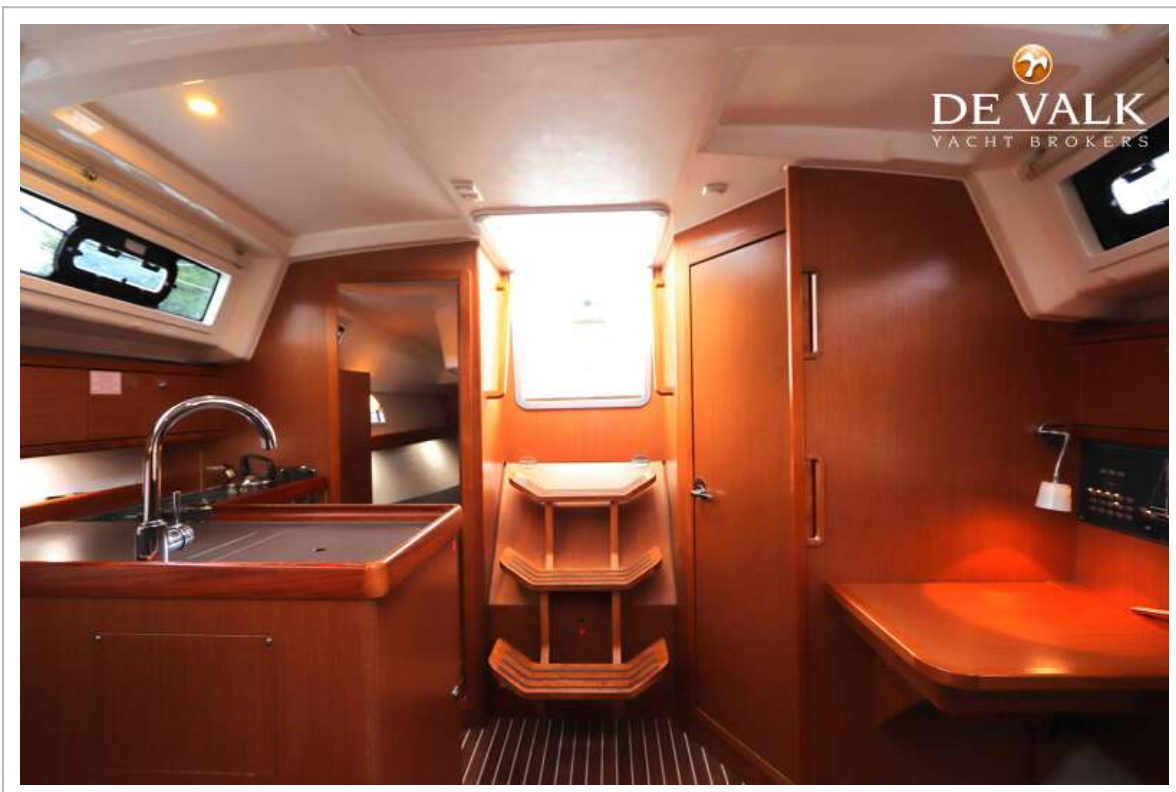
BAVARIA CRUISER 34



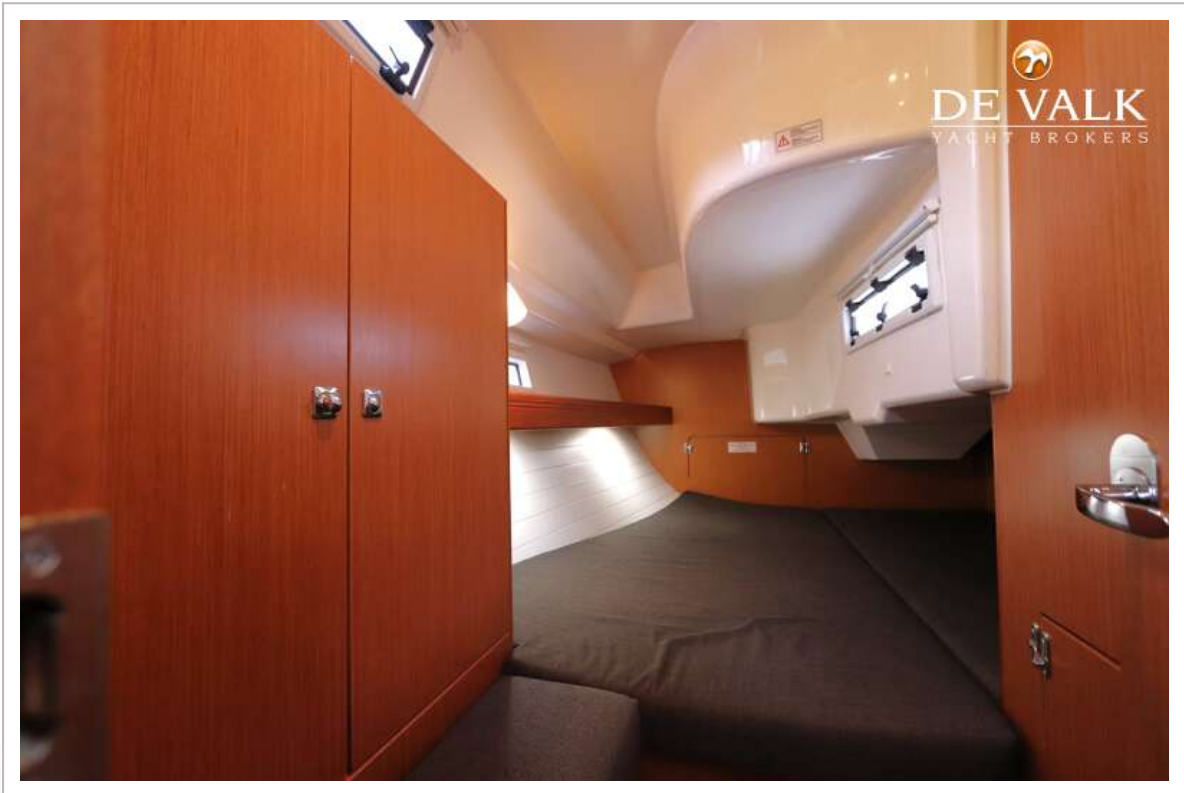
BAVARIA CRUISER 34



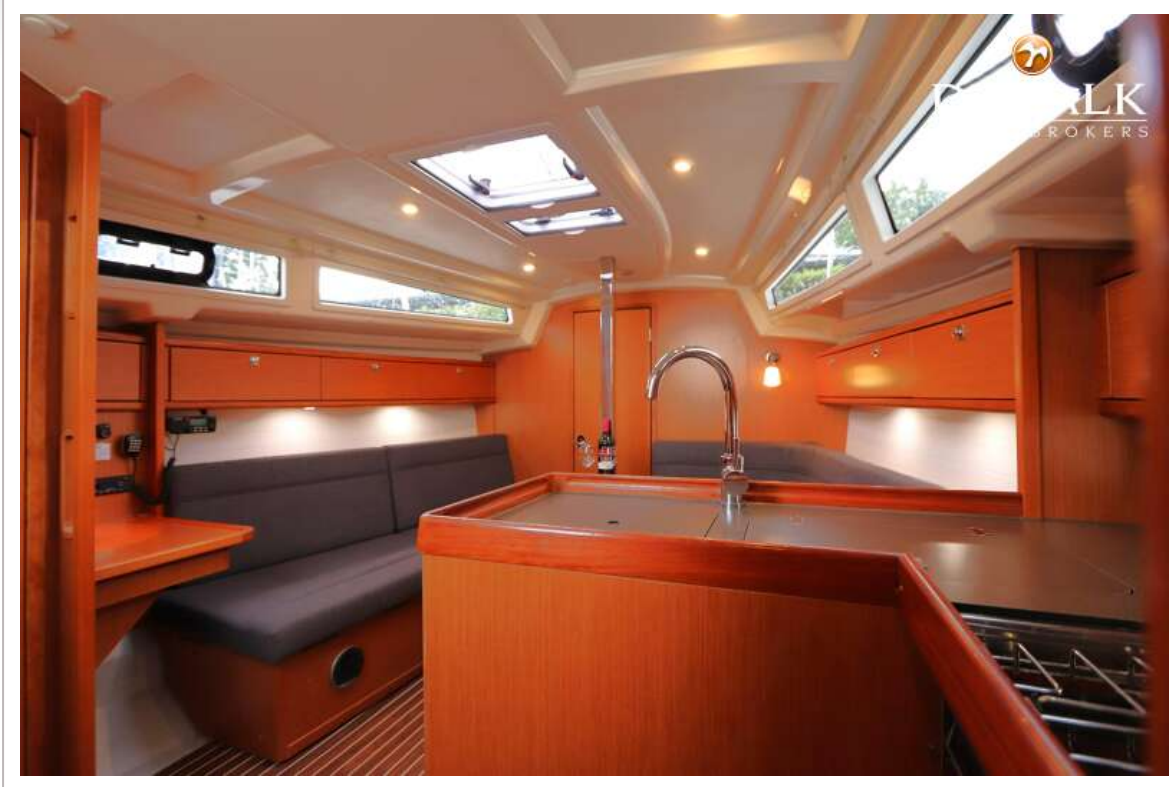
BAVARIA CRUISER 34



BAVARIA CRUISER 34



BAVARIA CRUISER 34



BAVARIA CRUISER 34



BAVARIA CRUISER 34

