



DE VALK
YACHT BROKERS



BAVARIA CRUISER 34



DE VALK
YACHT BROKERS

BAVARIA CRUISER 34

BROKER'S COMMENTS

The BAVARIA CRUISER 34 is the small but very large BAVARIA. This Bavaria 34 has excellent - and very safe - sailing characteristics. The XXL cockpit with twin steering controls is pleasantly spacious while sailing and in between. And below deck there is enough space for six people. "Jitty" can be viewed and admired 7 days a week from 1 Oktober 2024 at our sales marina in Hindeloopen.

Johan Nooitgedagt

SPECIFICATIONS

Dimensions	9.99 x 3.42 x 1.55 (m)	Builder	Bavaria Yachts, Giebelstadt
Built	2021	Cabins	2
Material	GRP	Berths	5
Engine(s)	1 x Volvo Penta D1-20F diesel	Hp/Kw	18.00 (hp), 13.25 (kw)
Asking price	sold (VAT)	Lying	contact Hindeloopen

CONTACT

Sales office	De Valk Hindeloopen B.V.	Telephone	+31 514 52 40 00
Address	Oosterstrand 1 8713 JS Hindeloopen NL	E-mail	hindeloopen@devalk.nl

DISCLAIMER

These particulars are given in good faith as supplied but cannot be guaranteed.



BAVARIA CRUISER 34

GENERAL

Model	BAVARIA CRUISER 34
Type	sailing yacht
LOA (m)	9,99
LWL (m)	9,15
Beam (m)	3,42
Draft (m)	1,55
Air draft (m)	14,85
Headroom (m)	1,85
Year built	2021
Launched	2021
Builder	Bavaria Yachts, Giebelstadt
Country	Germany
Designer	Farr Yacht Design
Displacement (t)	5,3
Ballast (tonnes)	cast iron 1,4
CE norm	A
Hull material	GRP
Hull colour	white
Hull shape	round-bilged
Keel type	fin keel
Superstructure material	GRP
Rubbing strake	aluminum
Deck material	GRP
Deck finish	non-skid moulded in
Superstructure deck finish	non-skid moulded in
Cockpit deck finish	teak
Antifouling (year)	2024
Window material	polycarbonate
Deckhatch	3
Fuel tank (litre)	polyethylene 150



BAVARIA CRUISER 34

Level indicator (fuel tank)	yes
Freshwater tank (litre)	polyethylene 150
Blackwater tank (litre)	polyethylene 65
Blackwater tank extraction	deck extraction
Wheel steering	mechanical Double JFA
Emergency tiller	yes

ACCOMMODATION

Cabins	2
Berths	5
Interior	mahogany
Floor	woodprint
Open cockpit	yes
Headroom saloon (m)	1,85
Heating	diesel ducted hot air Planar
Chart table	yes
Aft Cabin	yes
Galley	yes
Countertop	corian
Sink	stainless steel
Cooker	calor gas 2 burner
Oven	yes
Fridge	Isotherm
Hot water system	220V + engine
Water pressure system	electrical
Owners cabin	v-bed Front
Bed length (m)	2,0
Wardrobe	hanging and shelves
Bathroom	shared
Toilet	shared
Toilet system	manual Jabsco



BAVARIA CRUISER 34

Wash basin	at the toilet
Shower	shared
Guest cabin 1	double bed Rear
Bed length (m)	2.0
Wardrobe	hanging and shelves

MACHINERY

No of engines	1
Make	Volvo Penta
Type	D1-20F
HP	18
kW	13.25
Fuel	diesel
Maximum speed (kn)	6
Cruising speed (kn)	5
Consumption (l/hr)	3
Engine hours	551,2
Engine cooling system	freshwater heat exchanger
Drive	sail-drive
Saildrive seal	2020
Engine controls	mechanical
Exhaust	watercooled
Propeller type	fixed
Propeller blades	2
Electrical installation	yes
Start battery	yes
Service battery	yes
Battery charger	yes
Shorepower	with cable

NAVIGATION



BAVARIA CRUISER 34

Compass	Plastimo
Electric compass	B & G
Multi control display	B & G
Depth sounder/log	B & G
Log	B & G
Windset	B & G
Repeater	B & G
VHF	B & G
Autopilot	B & G
Rudder angle indicator	B & G
Plotter	yes
Plotter/GPS	B & G 9"

EQUIPMENT

Sprayhood	yes
Cockpit table	yes
Bathing platform	yes
Boarding ladder	stainless steel
Anchor	Bruce
Anchor chain	10m
Sea railing	wire
Grab rail (superstructure)	stainless steel
Pushpit	yes
Pulpit	yes
Fenders	yes
Mooring lines	yes
Radio-cd player	Blaupunkt Barcelona 270BT
Speakers in salon	yes
Speakers in cabin	yes
Fire extinguisher	yes



RIGGING

Rigging	sloop
Standing rigging	wire
Brand mast	Seldén
Material mast	aluminium
Spreaders	2 pair
Mainsail	yes
Stoway mast	yes
Genoa II	yes
Genoa furler	yes
Reefing System	main in-mast furling
Backstay adjuster	tackle
Boomvang	gasspring
Genoa sheetwinches	2x Harken ST30
Multifunctional winches	halyard/sheet winches 2x Harken ST15



BAVARIA CRUISER 34



BAVARIA CRUISER 34



BAVARIA CRUISER 34



BAVARIA CRUISER 34



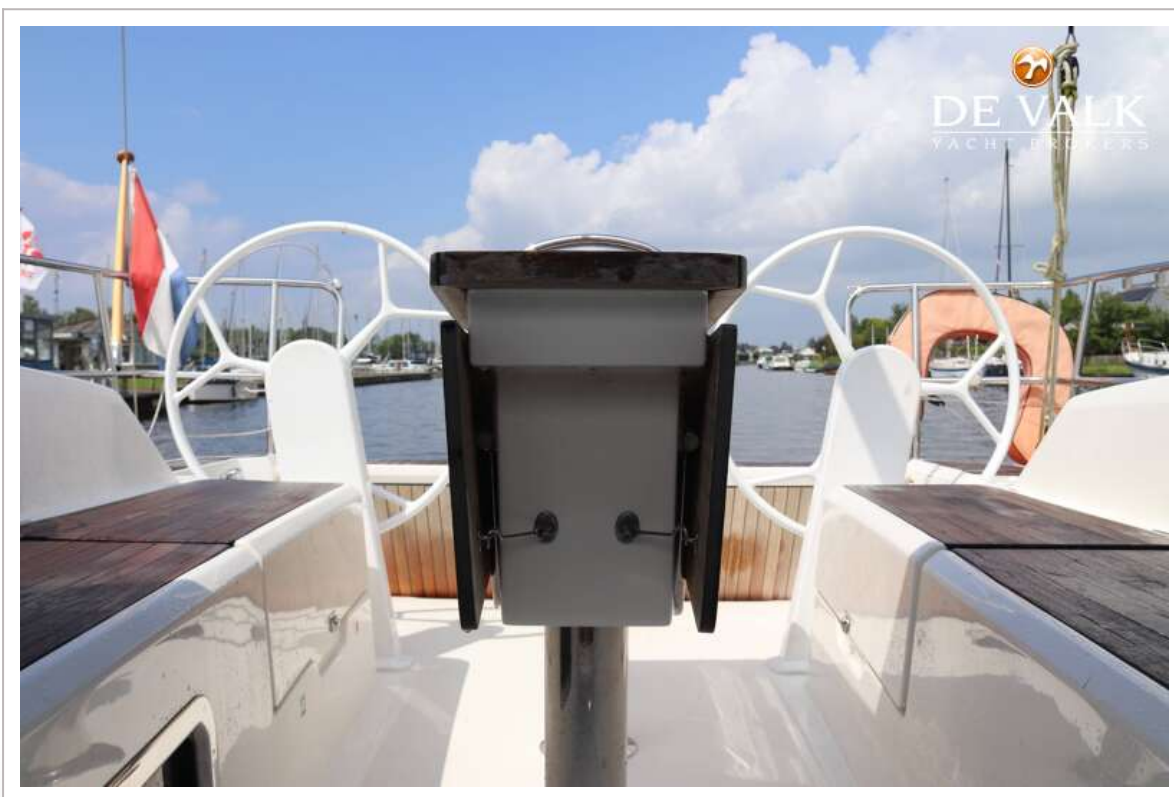
BAVARIA CRUISER 34



BAVARIA CRUISER 34



BAVARIA CRUISER 34



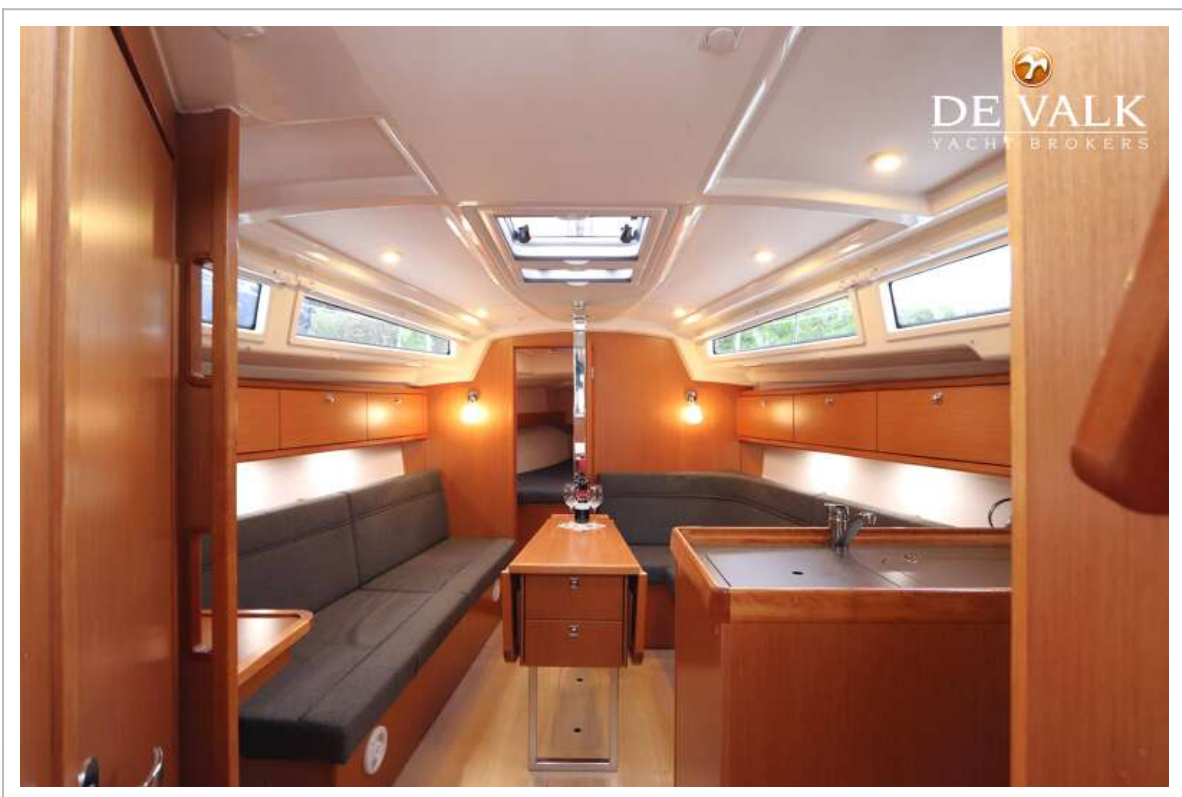
BAVARIA CRUISER 34



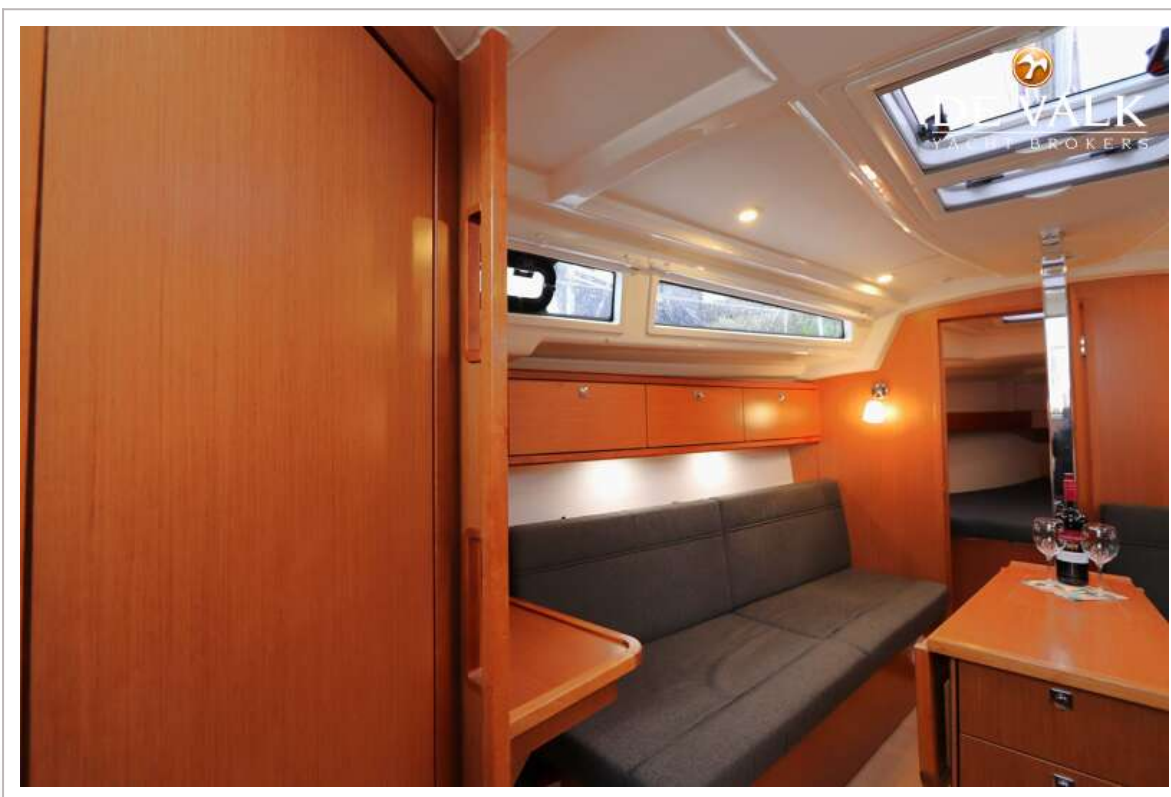
BAVARIA CRUISER 34



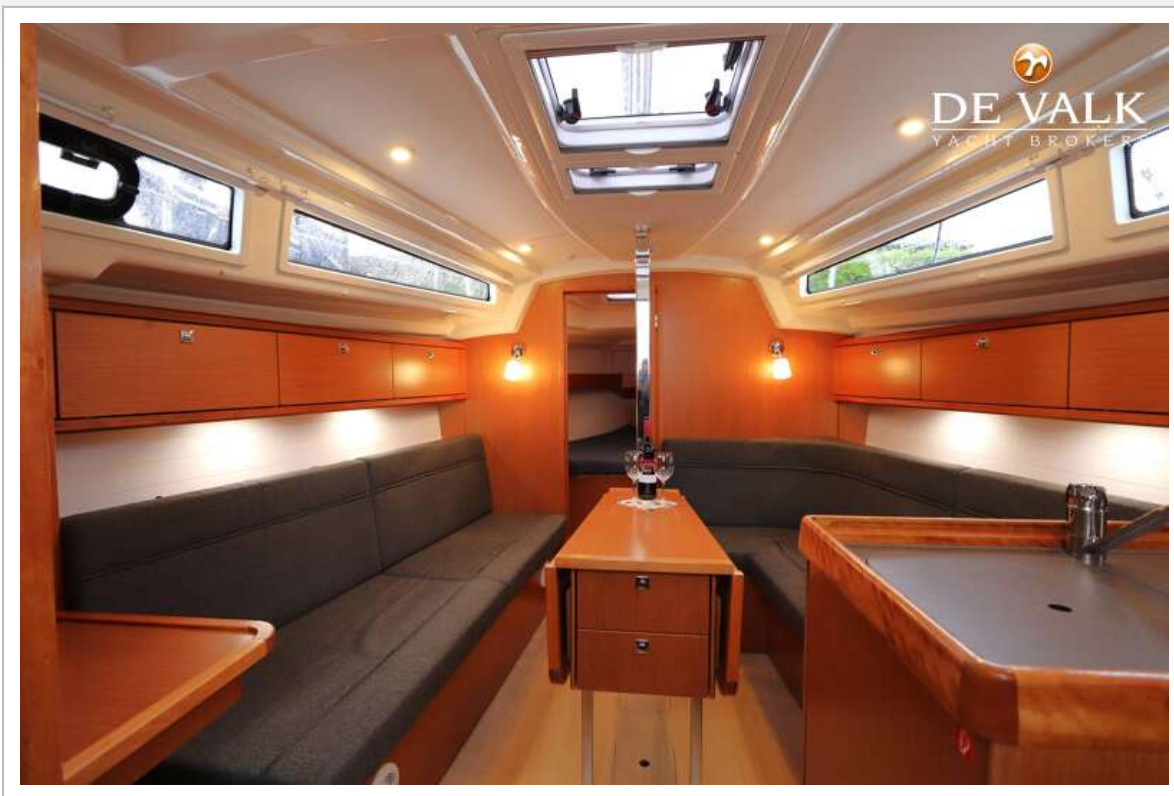
BAVARIA CRUISER 34



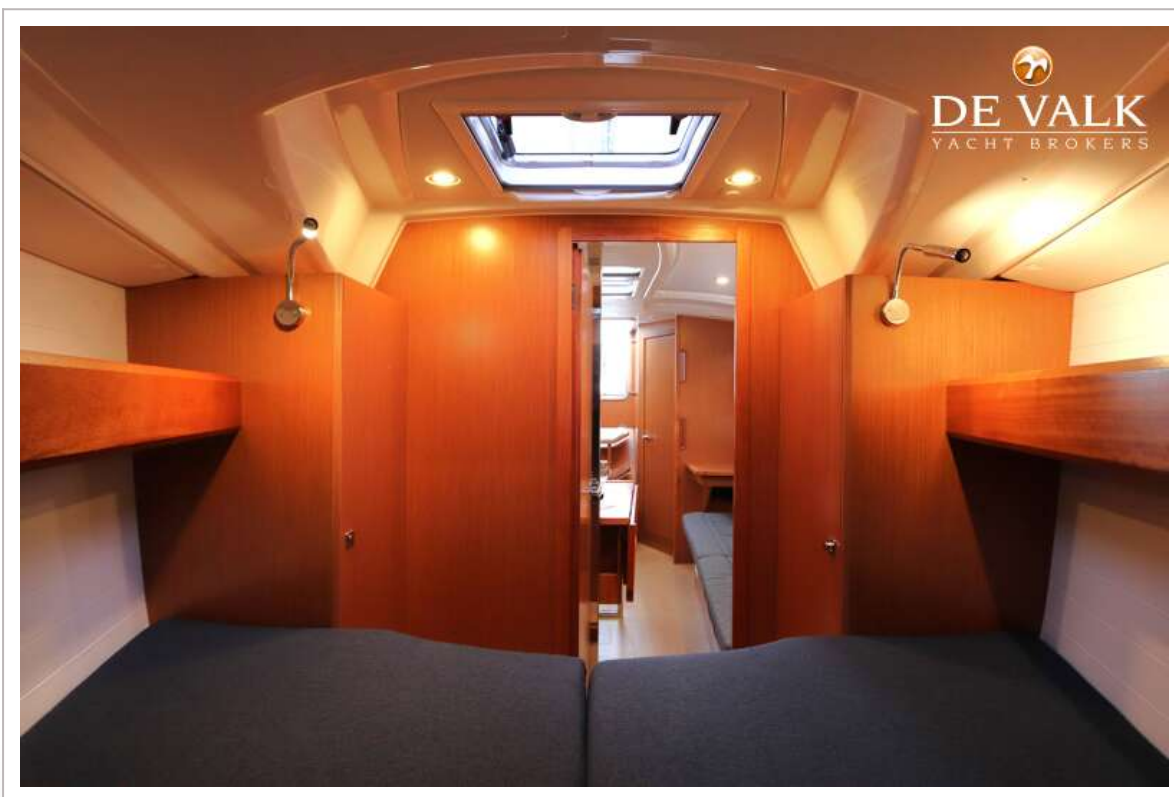
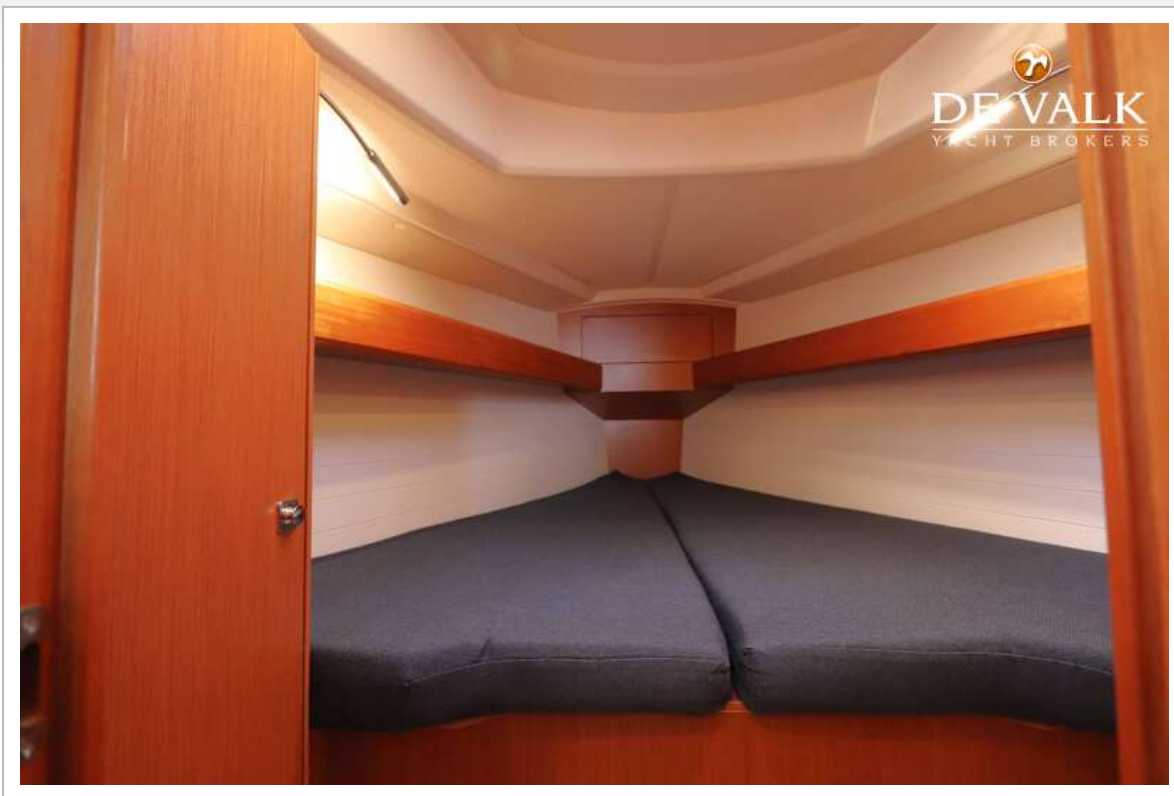
BAVARIA CRUISER 34



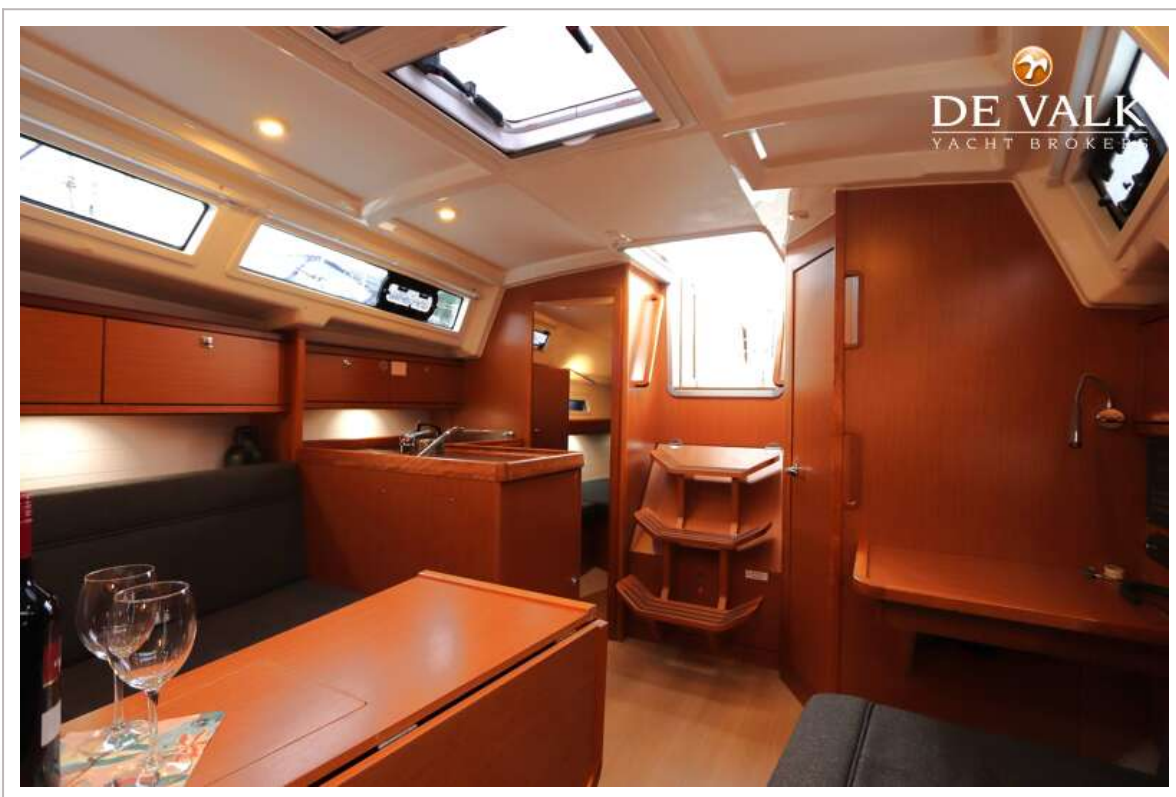
BAVARIA CRUISER 34



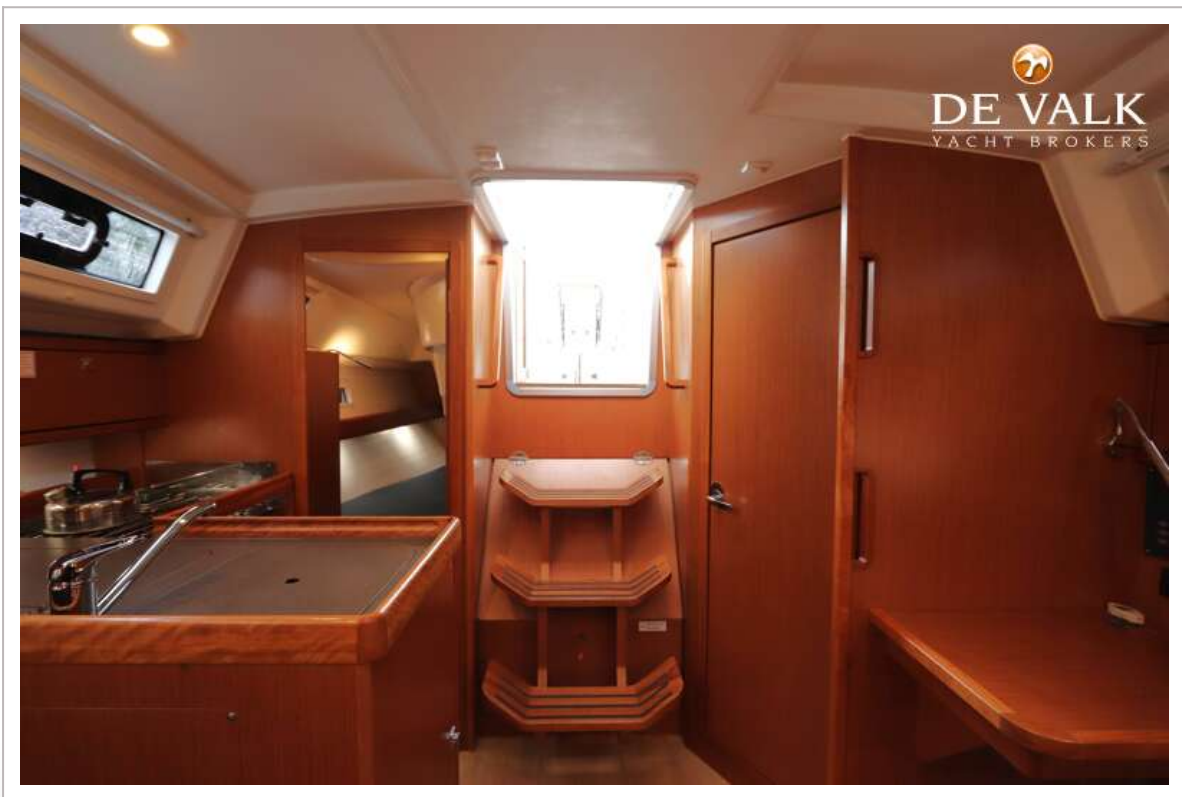
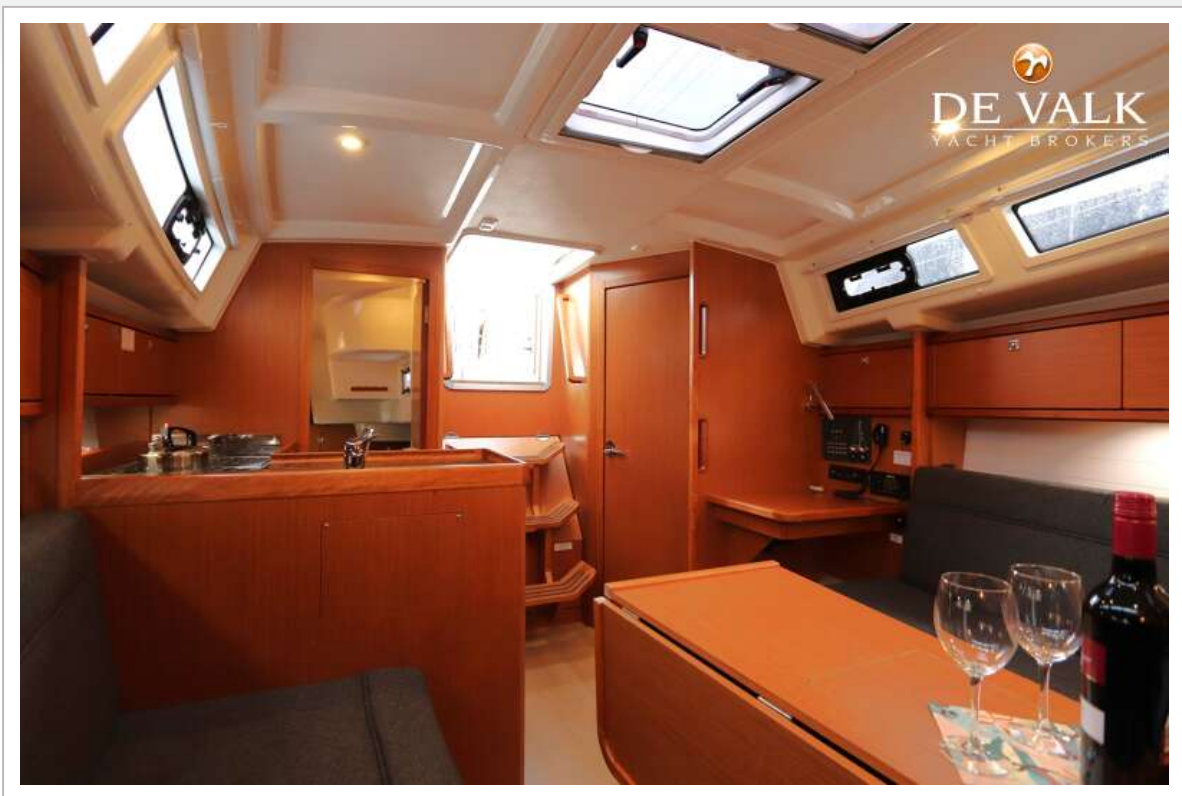
BAVARIA CRUISER 34



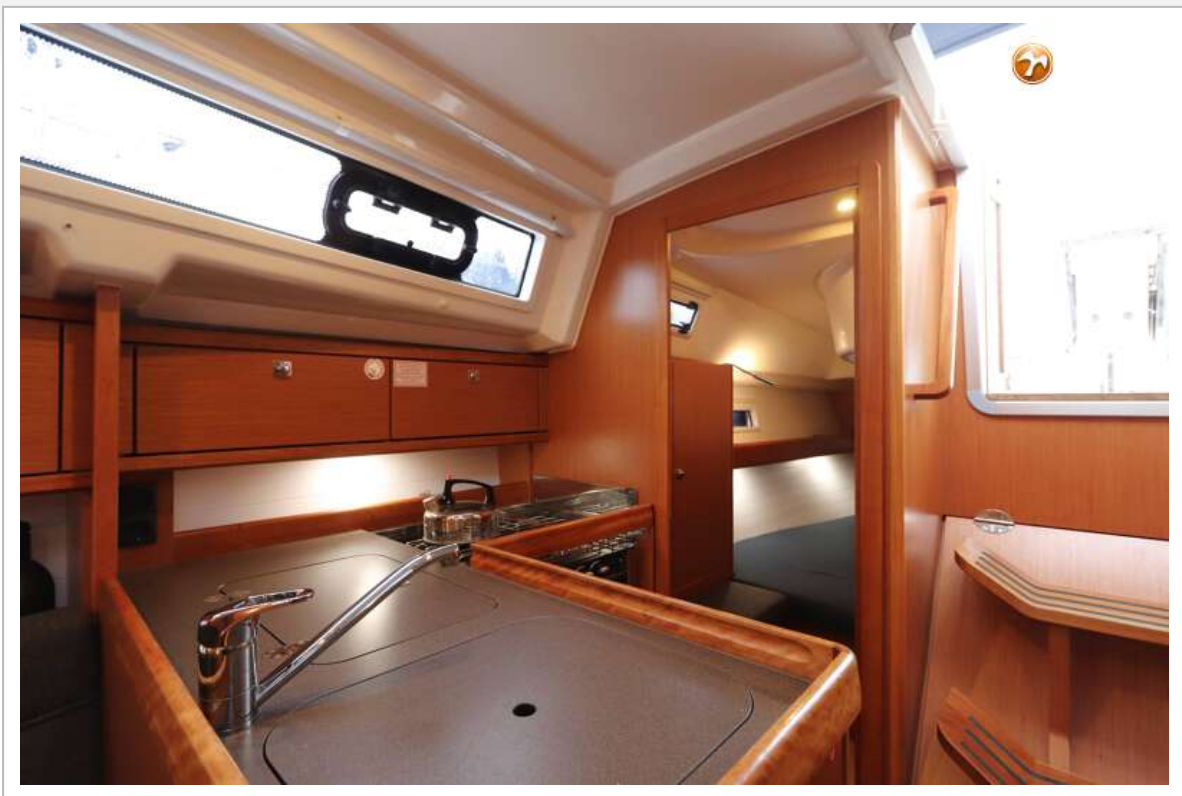
BAVARIA CRUISER 34



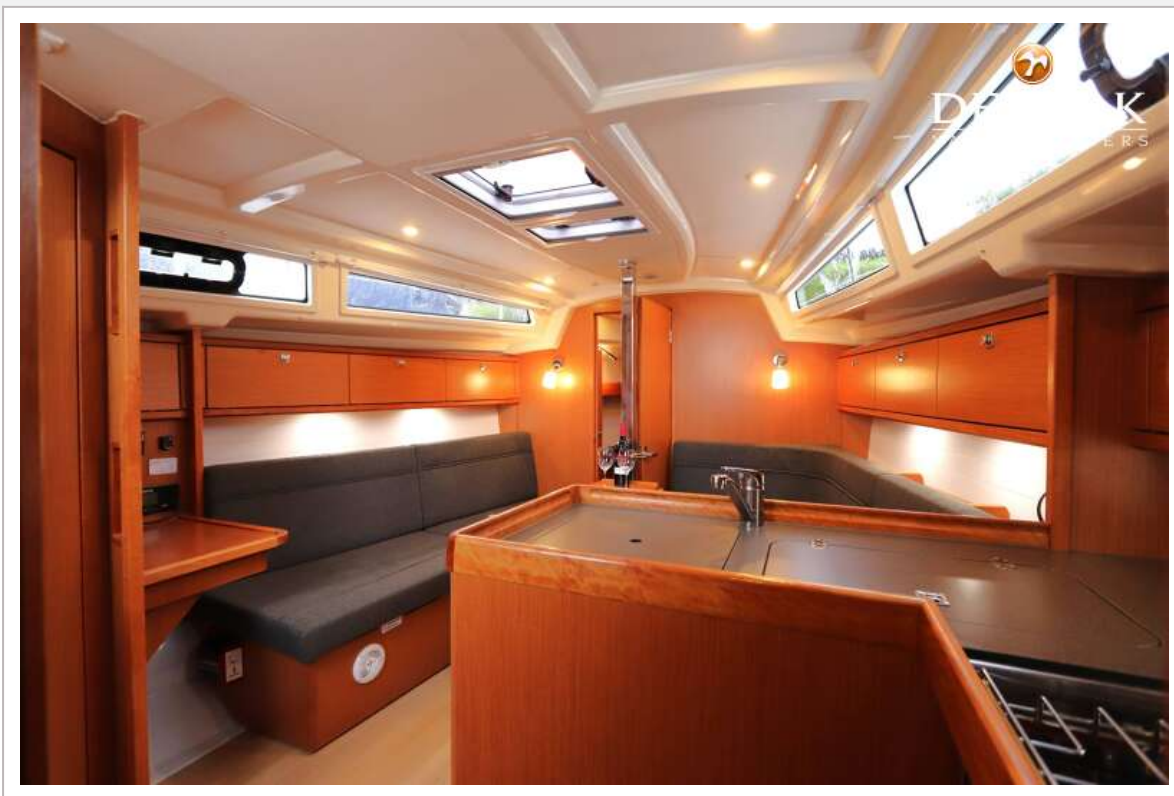
BAVARIA CRUISER 34



BAVARIA CRUISER 34



BAVARIA CRUISER 34



BAVARIA CRUISER 34



BAVARIA CRUISER 34

