



DE VALK  
YACHT BROKERS



## BOARNCRUISER 55 CLASSIC LINE



DE VALK  
YACHT BROKERS

# BOARNCRUISER 55 CLASSIC LINE

## BROKER'S COMMENTS

This beautiful 'Boarncruiser 55 Classic Line' was built in 2006 and is panelled with a warm & shiplap interior. In the stern is the spacious owner's cabin which has its own sanitary facilities. In the bow there are 2 guest cabins which share sanitary facilities. Technically the ship is also very complete. The drinking water pumps, charger and inverter are double. The main engines and generator are both equipped with a hydraulic pump, so the hydraulics can always be used.

*Ian Pols*

## SPECIFICATIONS

<b>Dimensions</b>	16.85 x 4.77 x 1.30 (m)	<b>Builder</b>	De Boarnstream
<b>Built</b>	2006	<b>Cabins</b>	3
<b>Material</b>	Steel	<b>Berths</b>	7
<b>Engine(s)</b>	2 x Vetus-Deutz DTA67 diesel	<b>Hp/Kw</b>	2 x 210.00 (hp), 154.56 (kw)
<b>Asking price</b>	€ 449.000 (VAT Paid)	<b>Lying</b>	elsewhere / Not at sales office

## CONTACT

<b>Sales office</b>	De Valk Altena	<b>Telephone</b>	+31 162 727211
<b>Address</b>	Keizersveer 3A 4941 TA Raamsdonksveer NL	<b>E-mail</b>	altena@devalk.nl

## DISCLAIMER

These particulars are given in good faith as supplied but cannot be guaranteed.



# BOARNCRUISER 55 CLASSIC LINE

## GENERAL

Model	BOARNCRUISER 55 CLASSIC LINE
Type	motor yacht
LOA (m)	16,85
Beam (m)	4,77
Draft (m)	1,30
Air draft min (m)	3,40
Headroom (m)	2,00
Year built	2006
Builder	De Boarnstream
Country	The Netherlands
Displacement (t)	35
CE norm	A
Hull material	steel
Hull colour	blue
Hull thickness (mm)	5/6
Hull shape	multi hard chine
Superstructure material	steel
Rubbing strake	fender rope
Deck material	steel
Deck finish	teak
Superstructure deck finish	paint
Antifouling (year)	2024
Window frame	aluminium
Window material	double glazing Heat resistant and slightly tinted
Deckhatch	Aluminium
Portholes	aluminium Gebo
Mast can be lowered	hydraulic
Fuel tank (litre)	steel 2500
Level indicator (fuel tank)	yes
Freshwater tank (litre)	stainless steel 2000



# BOARNCRUISER 55 CLASSIC LINE

Level indicator (freshwater)	yes
Blackwater tank (litre)	stainless steel 400
Level indicator (blackwater)	yes
Wheel steering	hydraulic
Inside helm position	yes
Outside helm position	hydraulic
More info on hull	The underwater hull was sandblasted in 2017.
More info on paintwork	The ship was completely painted in 2015.

## ACCOMMODATION

Cabins	3
Berths	7
Interior	teak
Aft deck	yes
Saloon	yes
Sliding roof	electric Manual tilt roof
Heating	central heating Kabola KB40 Ecoline (2018)
Aft Cabin	yes
Dining room	yes
Galley	yes
Cooker	induction
Microwave/oven combi	yes
Fridge	218 L (2021)
Freezer	In fridge
Hot water system	on central heating
Water pressure system	electrical
Dishwasher	(2021)
Owners cabin	French bed
Bathroom	en suite
Toilet	en suite
Toilet system	electric



# BOARNCRUISER 55 CLASSIC LINE

Wash basin	in the bathroom
Shower	en suite
Guest cabin 1	double bed
Bathroom	en suite
Toilet	shared
Toilet system	electric
Wash basin	in the bathroom
Shower	en suite
Washing machine/dryer combi	AEG

## MACHINERY

No of engines	2
Make	Vetus-Deutz
Type	DTA67
HP	210
kW	154.56
Fuel	diesel
Maximum speed (kn)	11
Cruising speed (kn)	8
Engine cooling system	freshwater heat exchanger
Drive	shaft
Bowthruster	hydraulic Proportional
Sternthruster	hydraulic Proportional
Exhaust	watercooled
Propeller type	fixed
Propeller blades	5 Blade, fitted with nozzles
Propeller shaft material	stainless steel
Manual bilge pump	yes
Electric bilge pump	2x
Generator	Mastervolt 16 kW
Start battery	2x 180 Ah (2024)



# BOARNCRUISER 55 CLASSIC LINE

Service battery	8x 240 Ah (2022)
Generator battery	180Ah (2022) incl. 12v battery charger
Battery monitor	yes
Battery charger/inverter	2x 2600 W 60A (2022)
Solar panel	4x
Shorepower	with cable
Stabilizers	fin Vetus
Extra info	Remotecontrol (2022)

## NAVIGATION

Compass	2x Raymarine
Log	2x Raymarine ST60
Windset	2 Raymarine ST60
VHF	Icom
Autopilot	Raymarine ST6002
Rudder angle indicator	yes
Radar	Raymarine
Plotter	2x Raymarine E80
Weather receiver	ICS Nav6

## EQUIPMENT

Bimini	(2018) electrically operated
Anchor	1x 60kg
Anchor chain	60m/ 10mm Strainless steel
Windlass	hydraulic
Deck wash	yes
Davits	stainless steel
Sea railing	stainless steel
Wiper	yes
Horn	yes
Fenders	yes



# BOARNCRUISER 55 CLASSIC LINE

Mooring lines	yes
Fire extinguisher	yes



# BOARNCRUISER 55 CLASSIC LINE





# BOARNCRUISER 55 CLASSIC LINE



# BOARNCRUISER 55 CLASSIC LINE

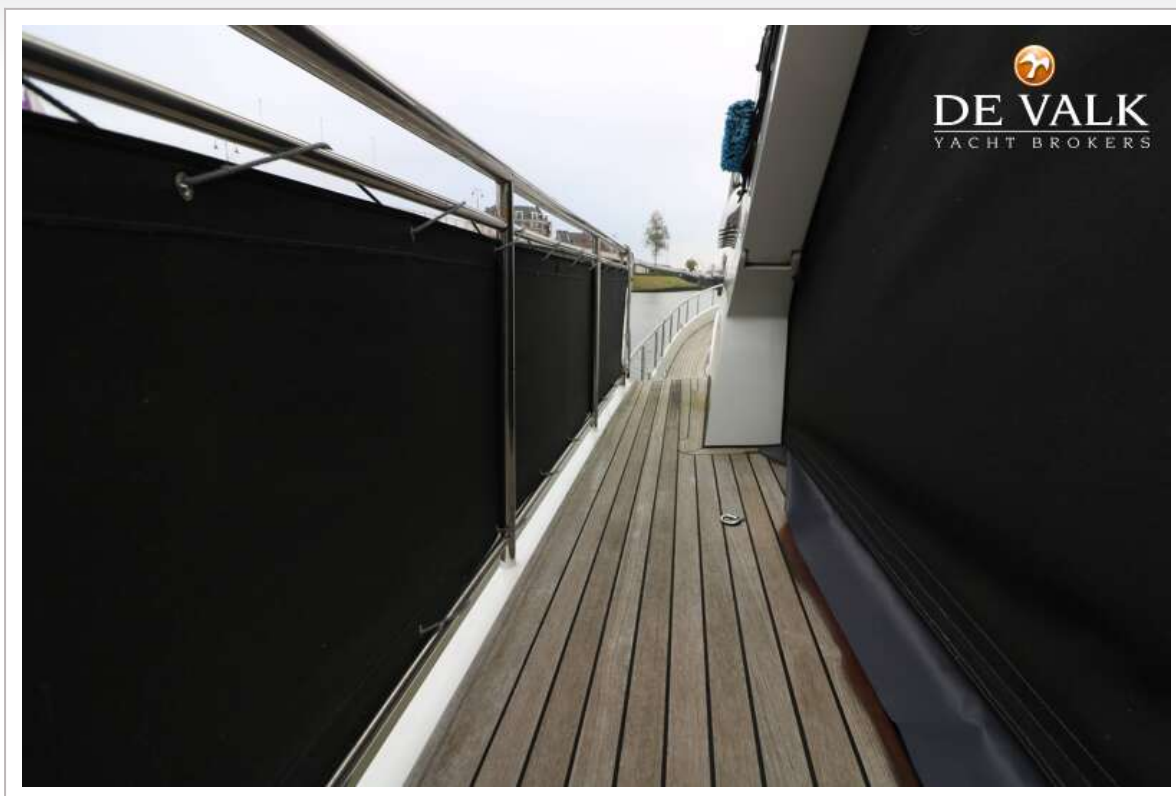




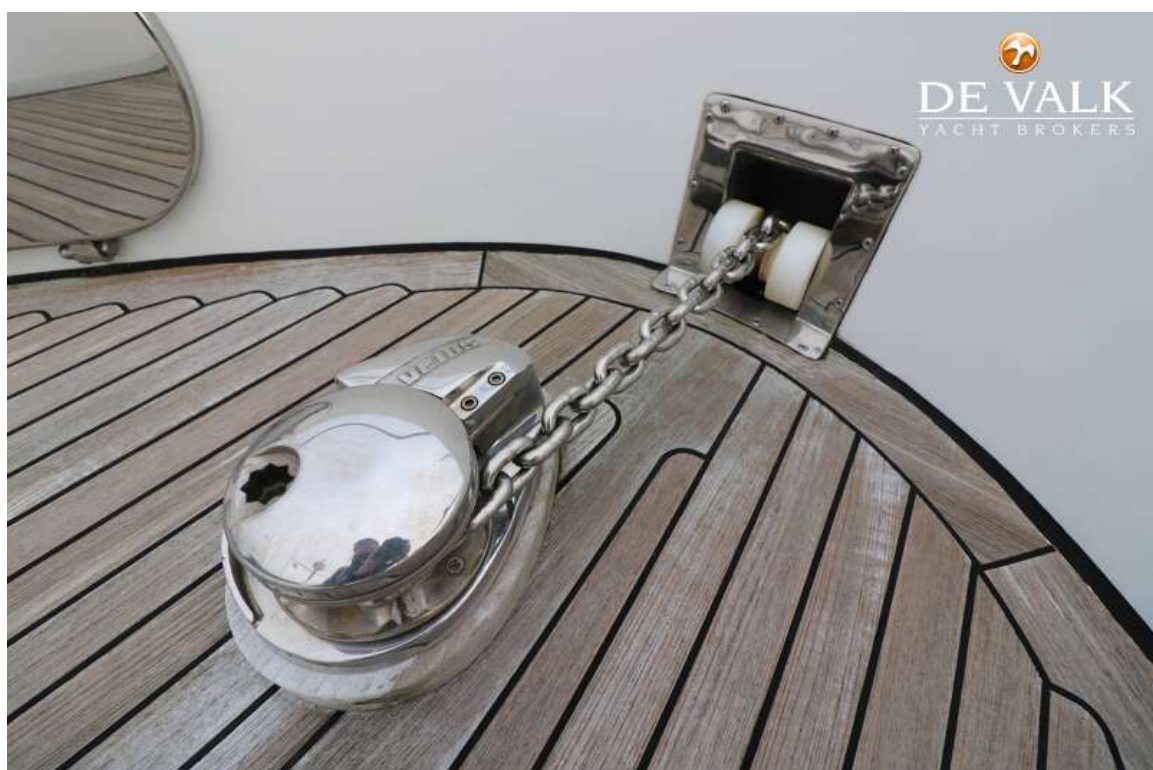
# BOARNCRUISER 55 CLASSIC LINE



# BOARNCRUISER 55 CLASSIC LINE



# BOARNCRUISER 55 CLASSIC LINE

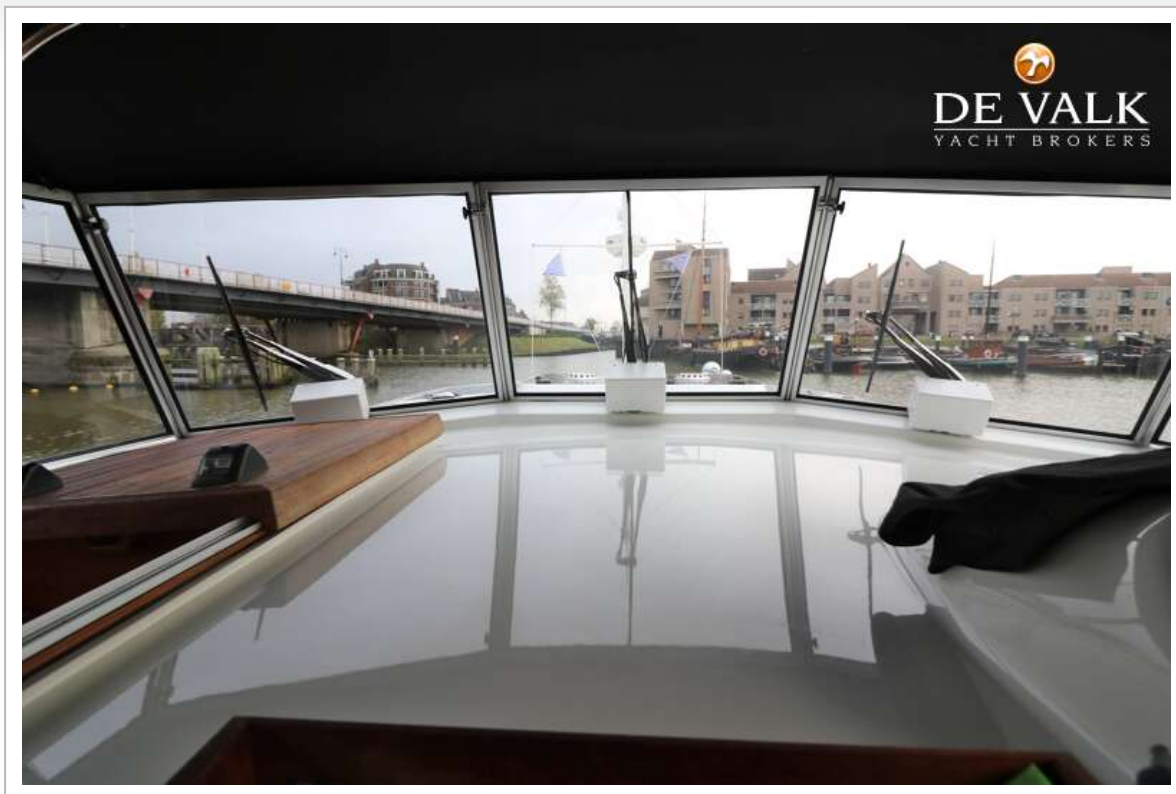




## BOARNCRUISER 55 CLASSIC LINE



# BOARNCRUISER 55 CLASSIC LINE



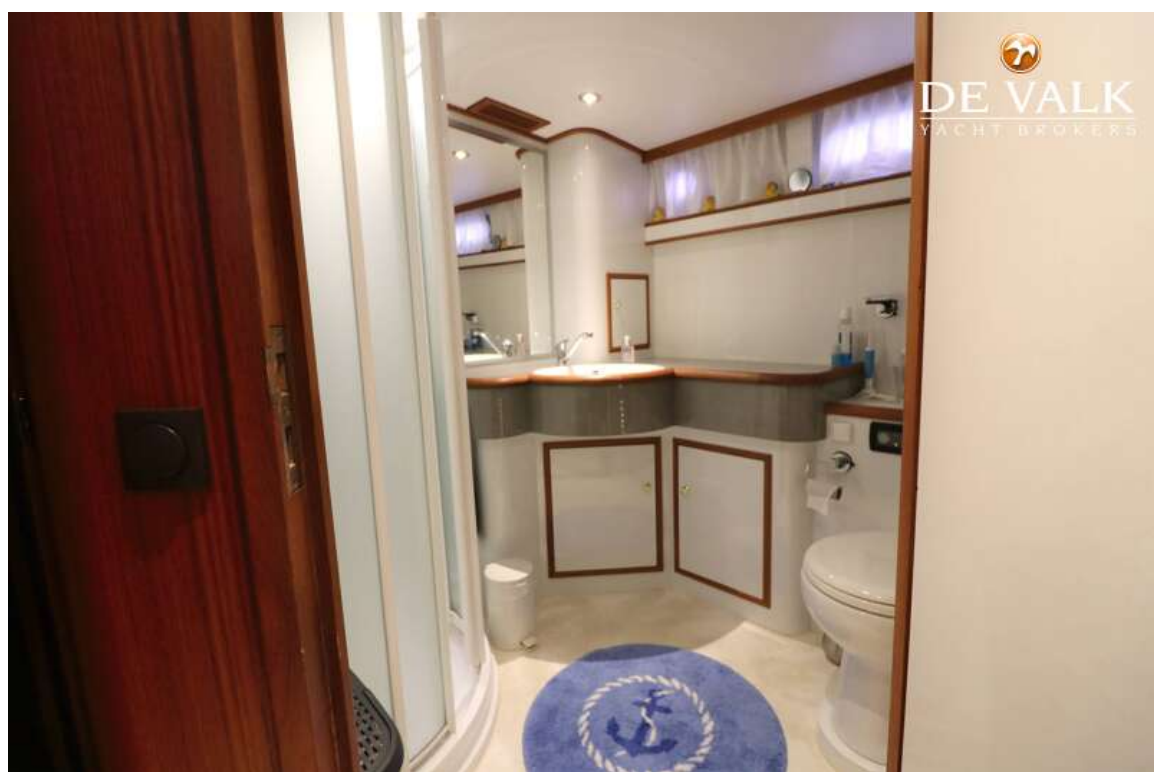


## BOARNCRUISER 55 CLASSIC LINE

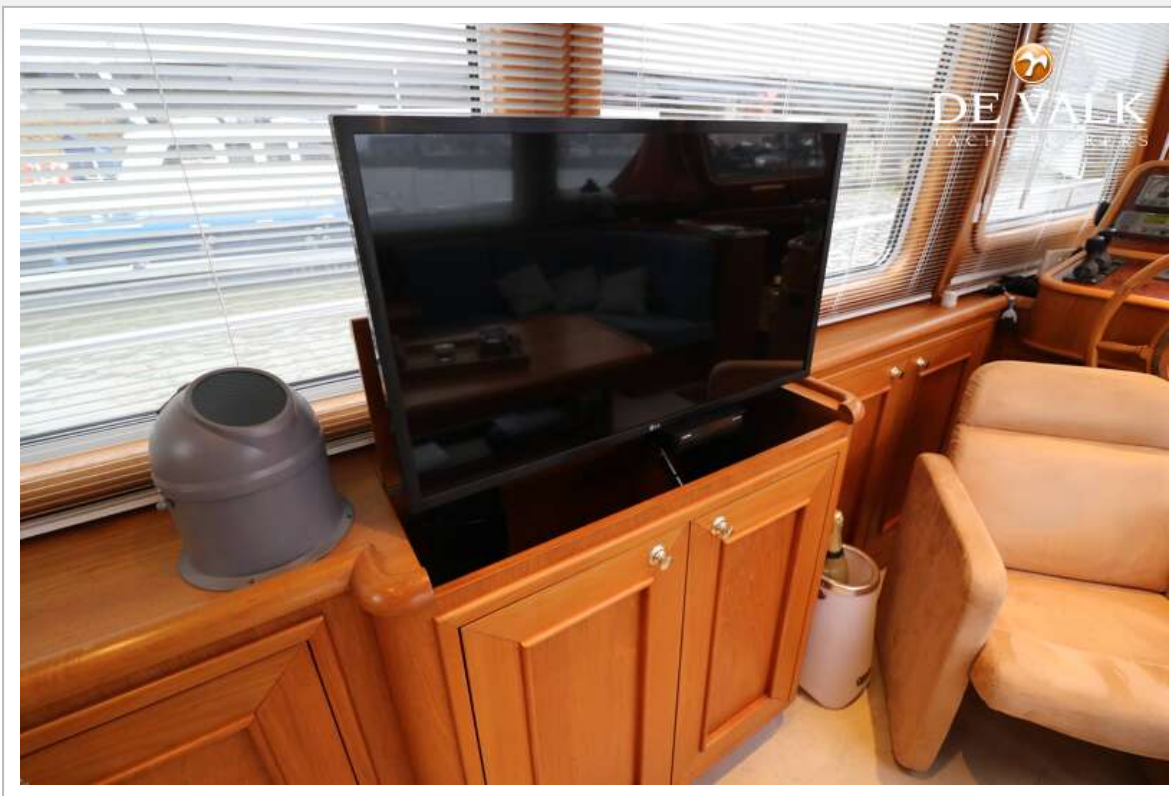




# BOARNCRUISER 55 CLASSIC LINE



# BOARNCRUISER 55 CLASSIC LINE

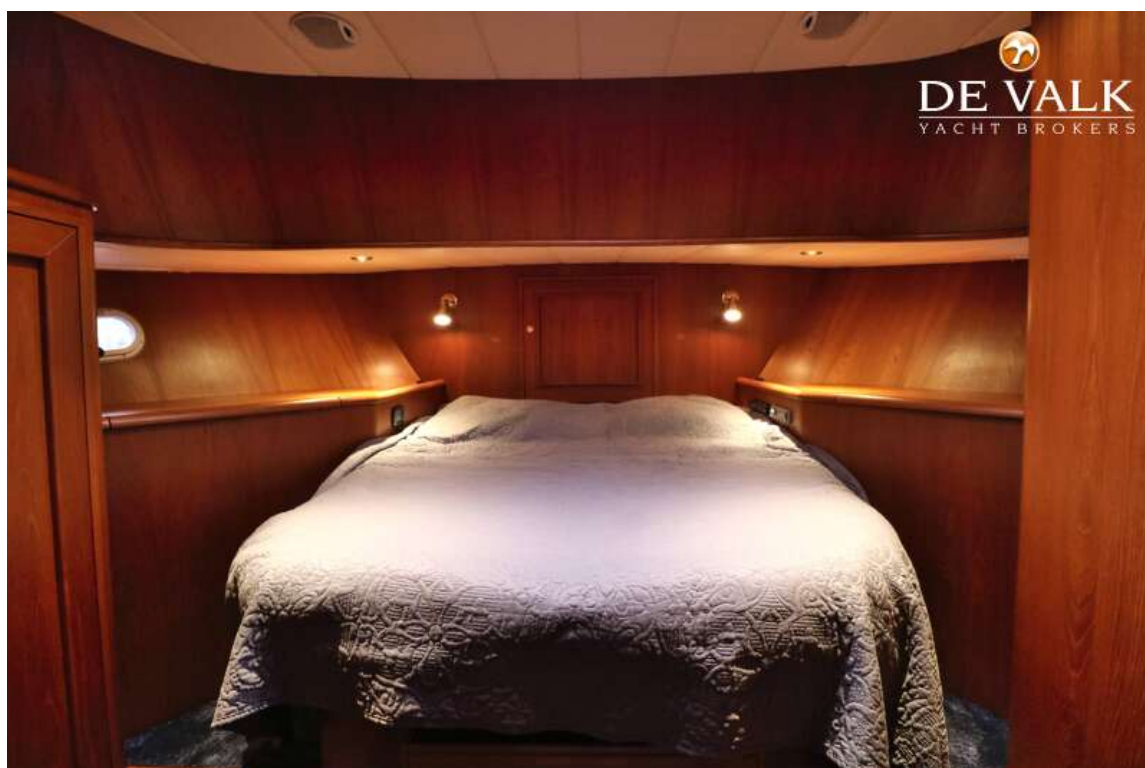
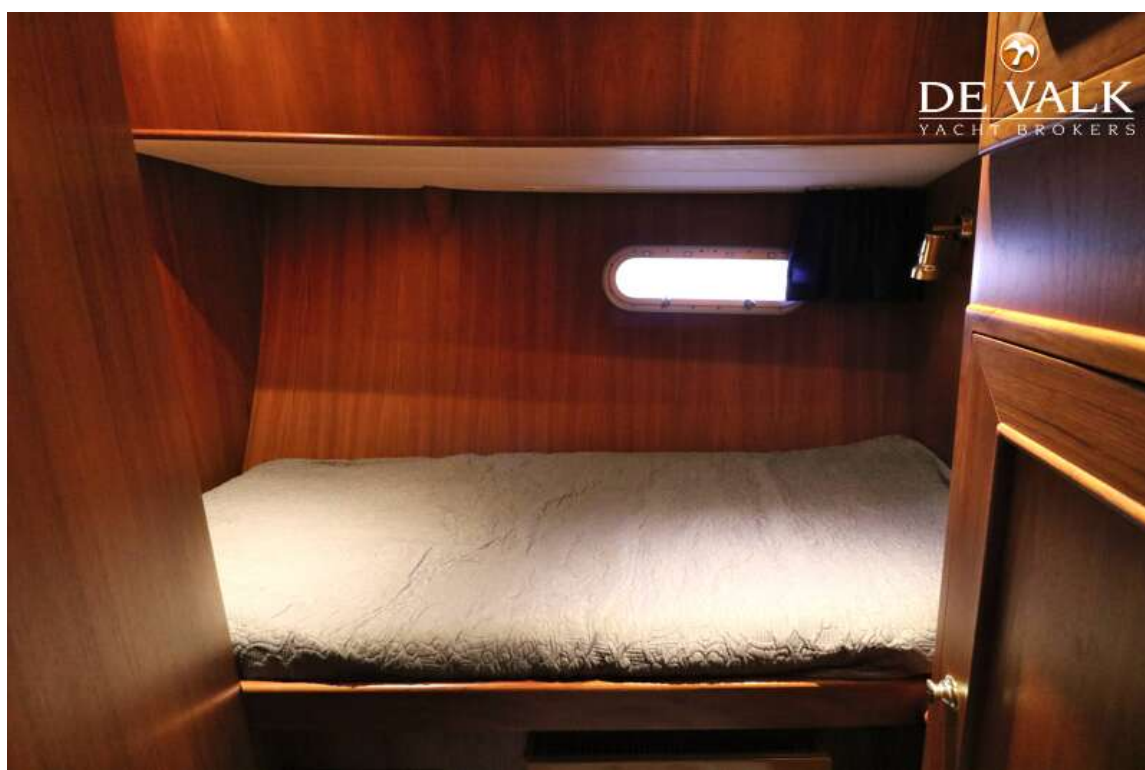




# BOARNCRUISER 55 CLASSIC LINE



## BOARNCRUISER 55 CLASSIC LINE





## BOARNCRUISER 55 CLASSIC LINE



# BOARNCRUISER 55 CLASSIC LINE





# BOARNCRUISER 55 CLASSIC LINE

