



DE VALK
YACHT BROKERS



DE RUITER KOTTER 1350 AK



DE VALK
YACHT BROKERS

DE RUITER KOTTER 1350 AK

BROKER'S COMMENTS

True vintage dutch built Trawler by De Ruiter (later known as Moonen). With her current owner since 1989, this "Kotter" has proven herself to be reliable, comfortable and almost a true member of the family. Dry stored most winters and maintained where it matters. Also recently upgraded with lots of renewals. Older yachts require an owner that appreciates the classic craftsmanship and knows his way around steel boats. A recent hull survey report showed her to be in good health. Good accommodations with ample storage. A classic motoryacht for the European waterways and occasional coastal trip.

Marc Weijenberg

SPECIFICATIONS

Dimensions	13.50 x 4.15 x 1.40 (m)	Builder	Scheepswerf De Ruiter B.V.
Built	1976	Cabins	2
Material	Steel	Berths	8
Engine(s)	2 x Ford Lehman 2715E diesel	Hp/Kw	2 x 120.00 (hp), 88.32 (kw)
Asking price	sold (VAT)	Lying	The Netherlands

CONTACT

Sales office	De Valk Thuishaven	Telephone	+31 35 5829042
Address	Marinaweg 8 (postal address) 1361 AC Almere NL	E-mail	thuishaven@devalk.nl

DISCLAIMER

These particulars are given in good faith as supplied but cannot be guaranteed.



DE RUITER KOTTER 1350 AK

GENERAL

Model	DE RUITER KOTTER 1350 AK
Type	motor yacht
LOA (m)	13,50
Beam (m)	4,15
Draft (m)	1,40
Air draft (m)	3,45
Headroom (m)	1,90
Year built	1976
Builder	Scheepswerf De Ruiter B.V.
Country	The Netherlands
Designer	A. Volker
Displacement (t)	22
Hull material	steel
Hull thickness (mm)	5 mm
Hull shape	multi hard chine
Keel type	long keel
Bilge keels	yes
Superstructure material	steel
Superstructure (mm)	4 mm
Deck plate thickness (mm)	4 mm
Rubbing strake	stainless steel
Deck material	steel
Deck finish	teak (2018, refurbished/new)
Cockpit deck finish	teak
Window frame	aluminium
Window material	tempered glass
Deckhatch	yes
Portholes	yes
Insulation	rockwool
Mast can be lowered	electric + manual



DE RUITER KOTTER 1350 AK

Steadying sail with mast	(included, not fitted)
Fuel tank (litre)	steel 1600
Freshwater tank (litre)	steel 800
Blackwater tank (litre)	No
Wheel steering	hydraulic
Outside helm position	hydraulic
More info on paintwork	Hull and superstructure new paint (2018), underwaterbody sandblasted and painted (2015)
Extra info	Seacocks renewed (2016), new exhausts (2011), coolingsystem clean/overhaul. The teak on aftdeck needs an overhaul.
Extra info	Three rudders for effective manouvering and easy tracking while underway.
Extra info	Was dry stored every winter and mostly sailed on the inland waterways.

ACCOMMODATION

Cabins	2
Berths	8
Floor	teak and holly (2018)
Aft deck	yes
Pilot house/deck saloon	with large sliding roof and 4 sliding windows
Headroom saloon (m)	1,90
Sliding roof	yes
Heating	diesel ducted hot air Webasto Airtop Evo 5500 (2013)
Dinette	yes
Dinette to convert into berth	with fold-down table and fill-in cushion, twin bed 1,90 x 1,25
Convertible berth	L-shaped pull-out double berth in the salon
Countertop	yes
Sink	stainless steel 1 x
Cooker	calor gas 4 burner/pits
Fridge	Coolmatic Rio (2022)
Hot water system	220V + engine Boiler



DE RUITER KOTTER 1350 AK

Water pressure system	electrical
Owners cabin	twin single
Bed length (m)	1,87 x 0,85 mtr
Wardrobe	hanging/drawers/shelves
Bathroom	shared 1
Toilet	shared
Toilet system	manual
Wash basin	in the bathroom
Shower	shared
Guest cabin 1	v-bed
Bed length (m)	1,98 x 0,73 mtr
Wardrobe	hanging/drawers/shelves

MACHINERY

No of engines	2
Make	Ford
Type	Lehman 2715E
HP	120
kW	88.32
Fuel	diesel
Year installed	1976
Maximum speed (kn)	9
Cruising speed (kn)	7
Consumption (l/hr)	8
Engine hours	2950
Engine cooling system	closed keelcooling
Drive	shaft
Engine controls	bowden cable
Gearbox	mechanical
Bowthruster	electric
Thrust bearing	yes



DE RUITER KOTTER 1350 AK

Propeller type	fixed
Propeller blades	3
Shaft lubrication	grease (automatic)
Electric bilge pump	yes
Electrical installation	24v/220v
Generator	(defect)
Start battery	2 x 105ah (2022)
Service battery	2 x 105ah (2022)
Generator battery	1 x 100ah (2021)
Battery monitor	yes
Battery charger	Victron Centaur 24v/60amp (2022)
Inverter	Victron Atlas 24v-220v/600watt (2022)
Shorepower	with cable
Extra info	New throttle and shift cables (2022), alternators overhauled (2021)

NAVIGATION

Electric compass	(defect)
Depth sounder	Raymarine (2021)
Log	Raymarine (2021)
Windset	Raymarine (2021)
VHF	Raymarine A80292 + handheld (2021)
Autopilot	Neco
Rudder angle indicator	VDO
Plotter/GPS	Raymarine Axiom 9 (2021)
AIS receiver	Raymarine
Navigation lights	yes
Searchlight	yes

EQUIPMENT

Fixed windscreen	can be folded down Perspex
------------------	----------------------------



DE RUITER KOTTER 1350 AK

Sprayhood	with zipp type back-part
Sun awning	yes
Cockpit table	fixed, in high gloss teak
Cockpit chairs	fixed fold-up/down type on the aft deck
Boarding ladder	aluminum
Anchor	Pool
Anchor chain	yes
Windlass	electrical Vetus 24v plus capstan (2013)
Sea railing	steel
Grab rail (superstructure)	teak
Railing side opening gates	2 x
Pushpit	yes
Pulpit	yes
Lifebuoy	2 x
Wiper	2 x
Clearview window	1 x
Horn	(defect)
Fenders	yes
Mooring lines	yes
Clock - barometer	yes
Fire extinguisher	yes



DE RUITER KOTTER 1350 AK



DE RUITER KOTTER 1350 AK



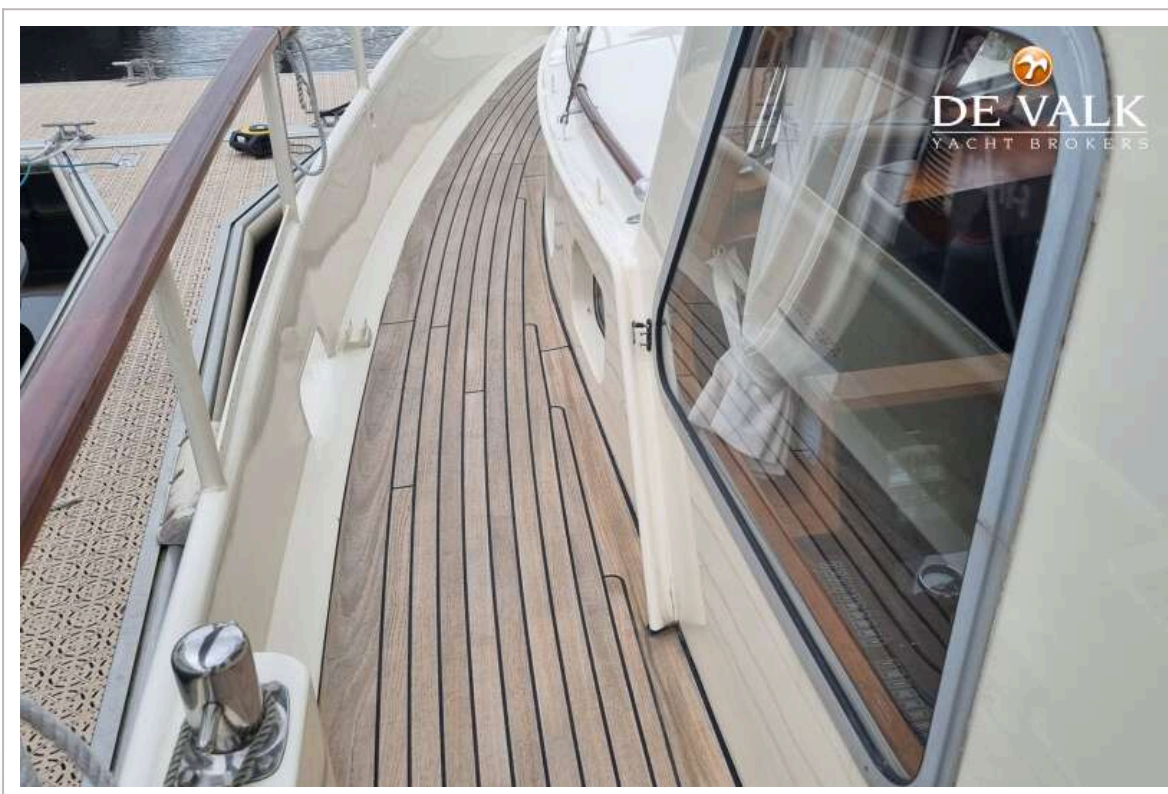
DE RUITER KOTTER 1350 AK



DE RUITER KOTTER 1350 AK



DE RUITER KOTTER 1350 AK



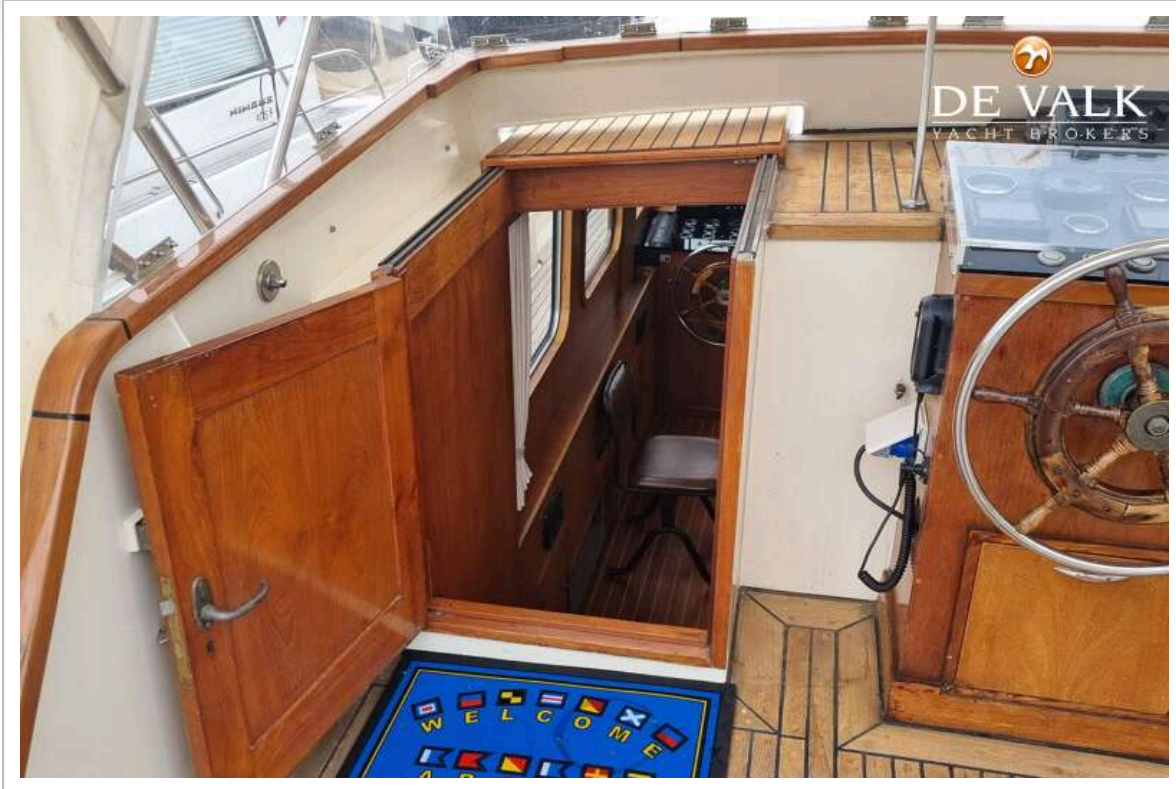
DE RUITER KOTTER 1350 AK



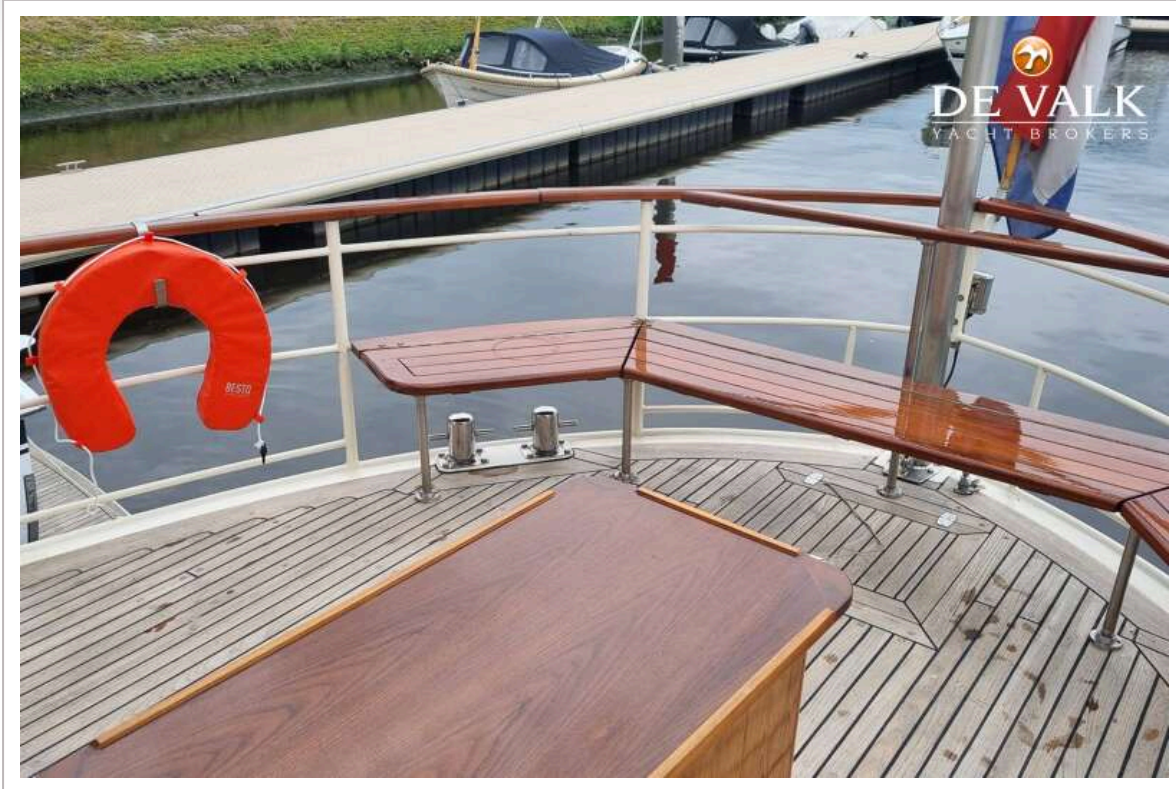
DE RUITER KOTTER 1350 AK



DE RUITER KOTTER 1350 AK



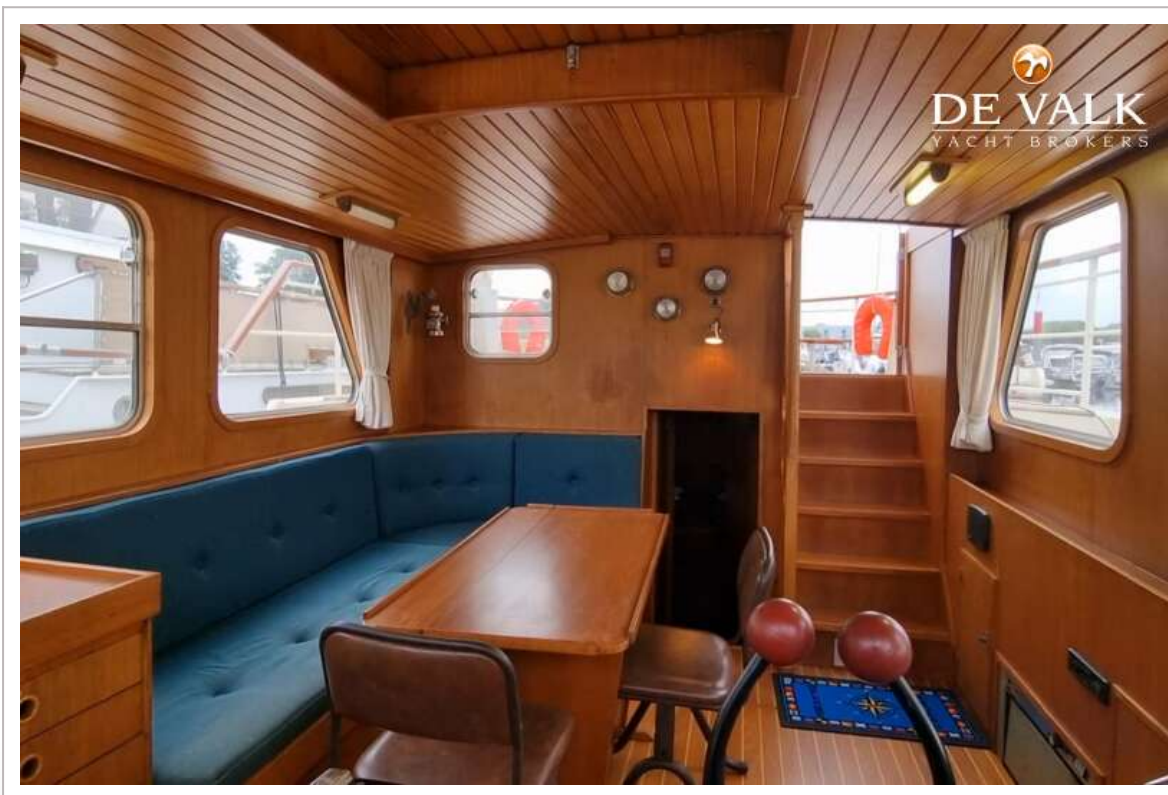
DE RUITER KOTTER 1350 AK



DE RUITER KOTTER 1350 AK



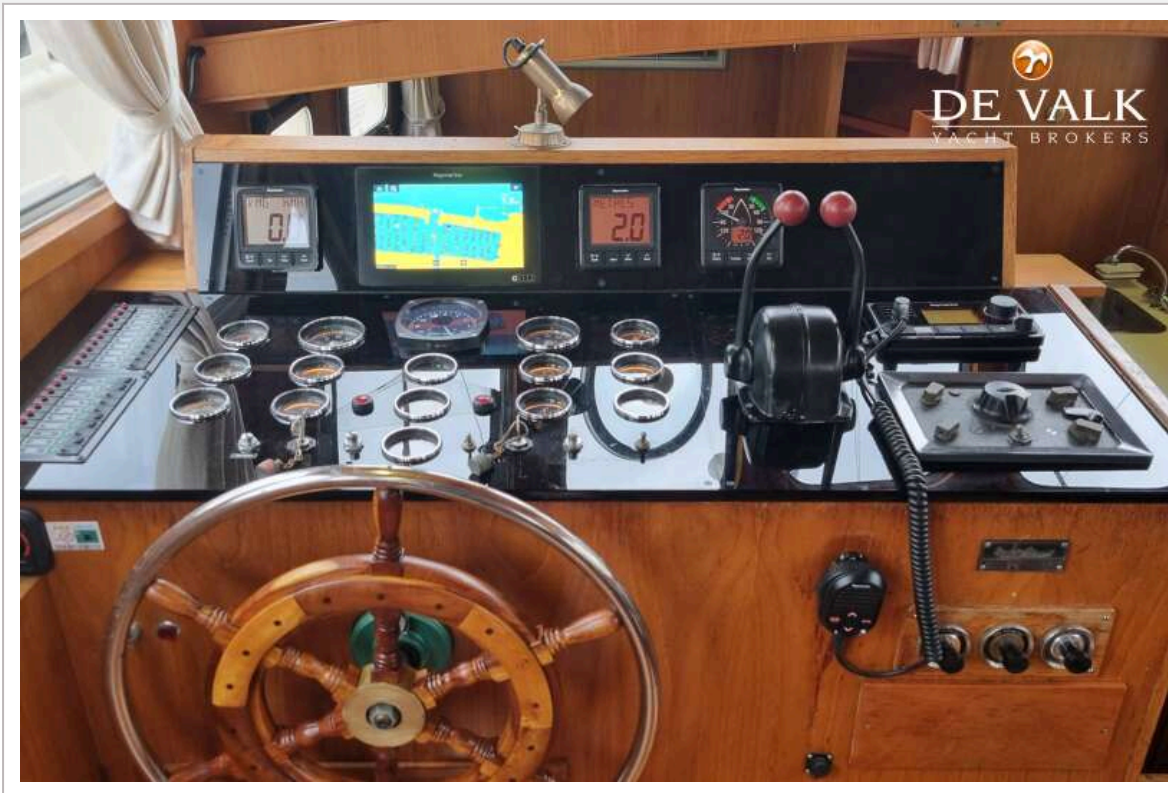
DE RUITER KOTTER 1350 AK



DE RUITER KOTTER 1350 AK



DE RUITER KOTTER 1350 AK



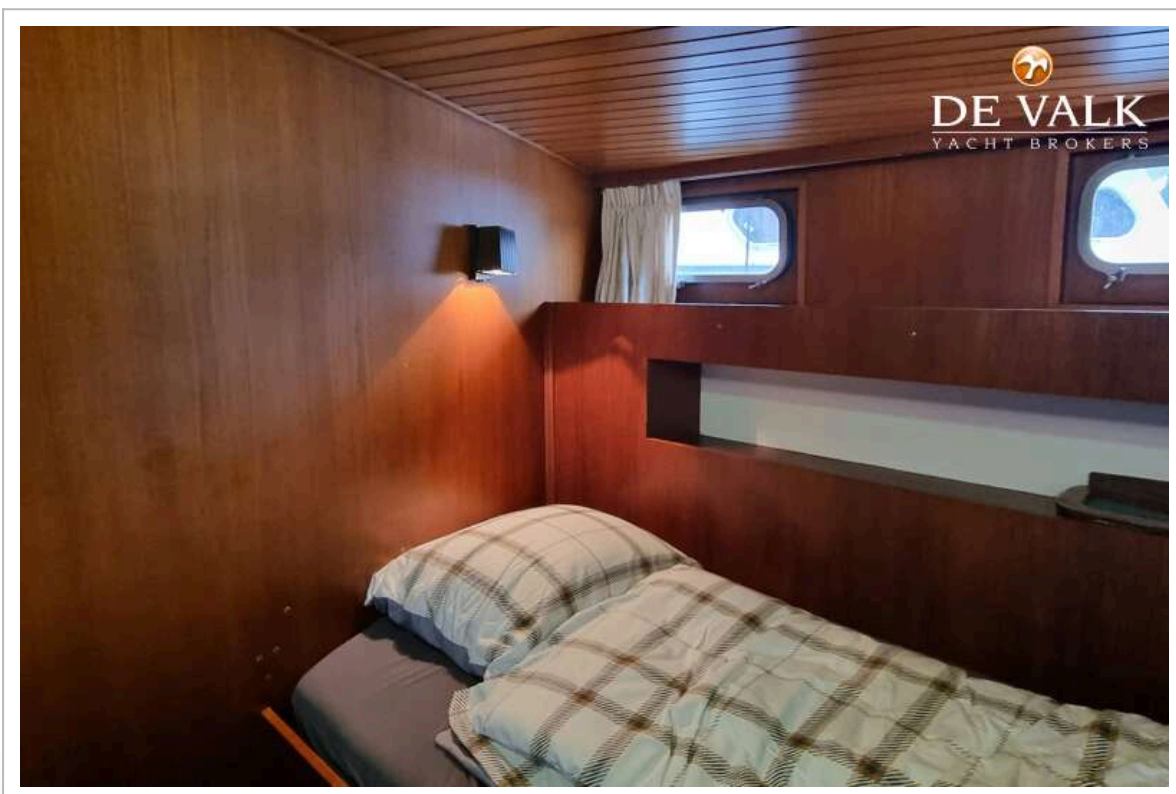
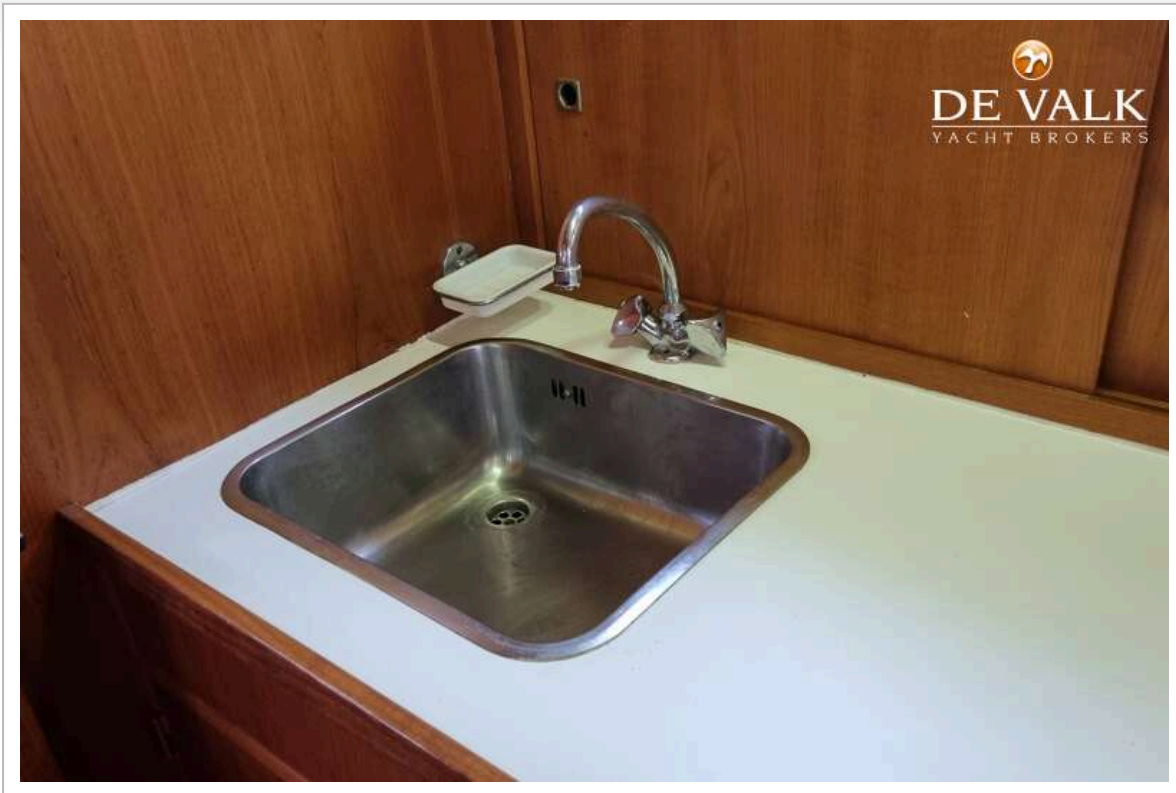
DE RUITER KOTTER 1350 AK



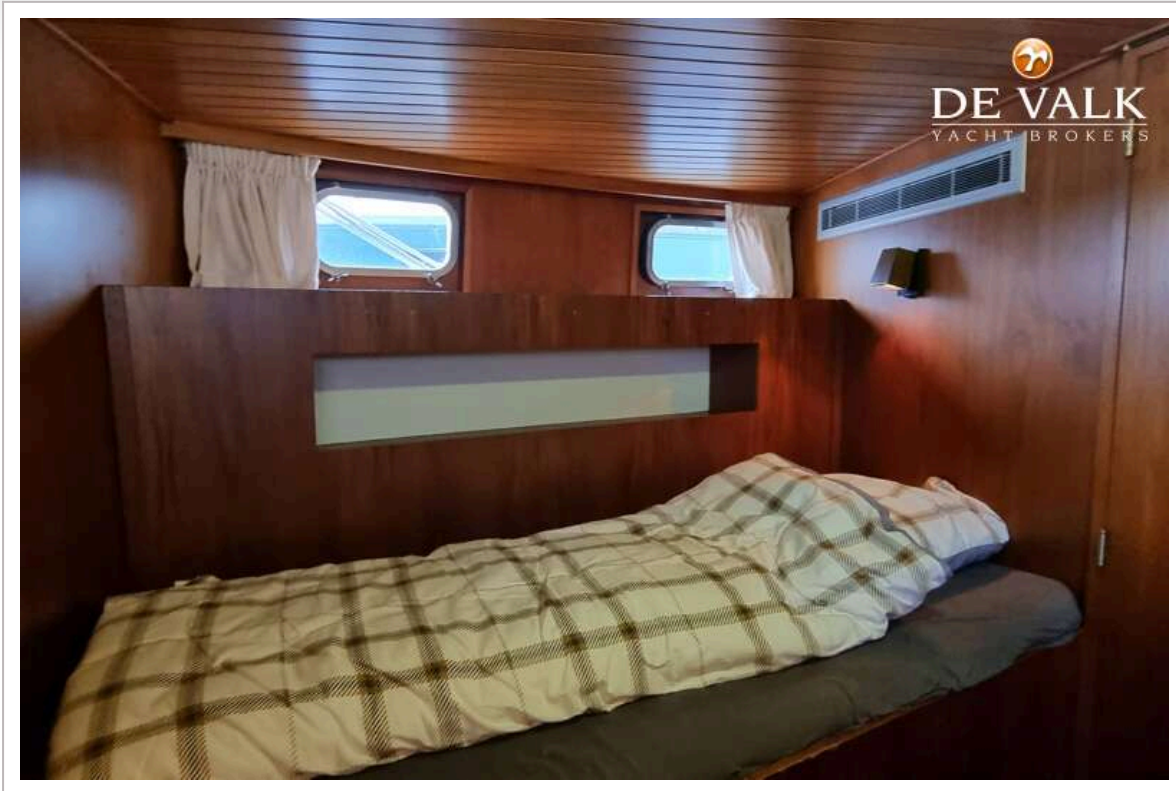
DE RUITER KOTTER 1350 AK



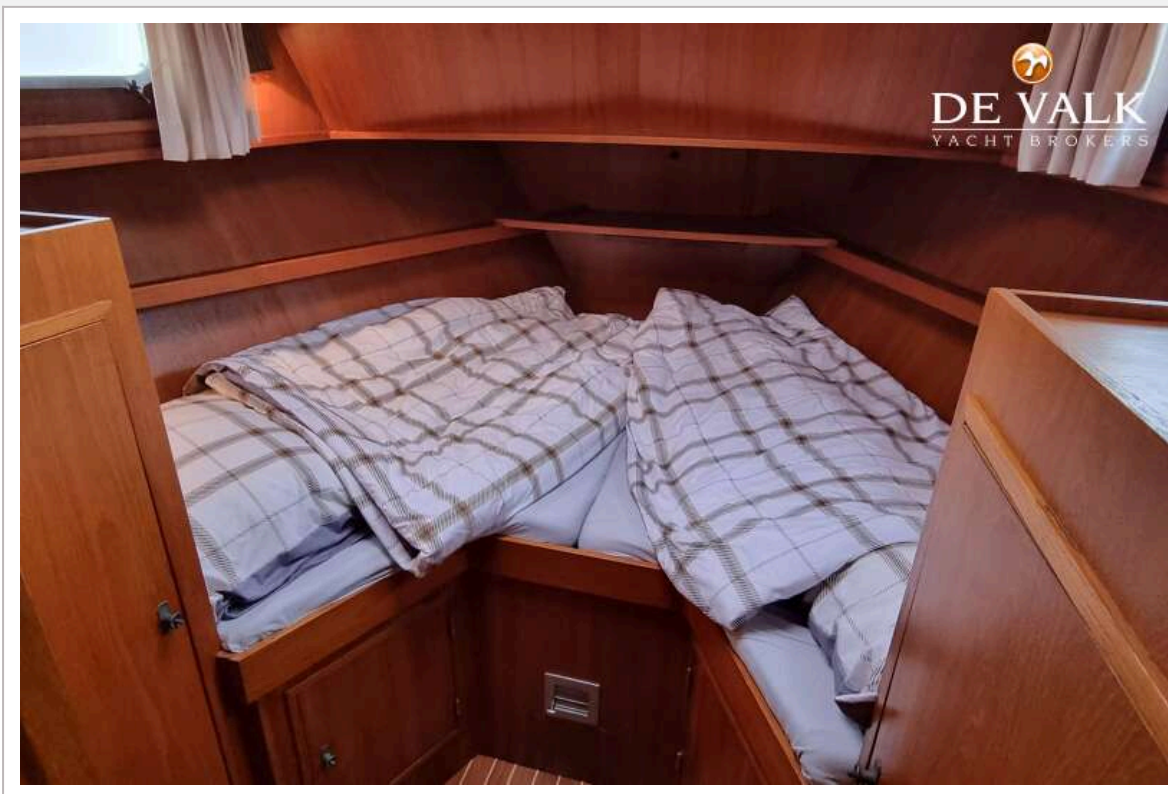
DE RUITER KOTTER 1350 AK



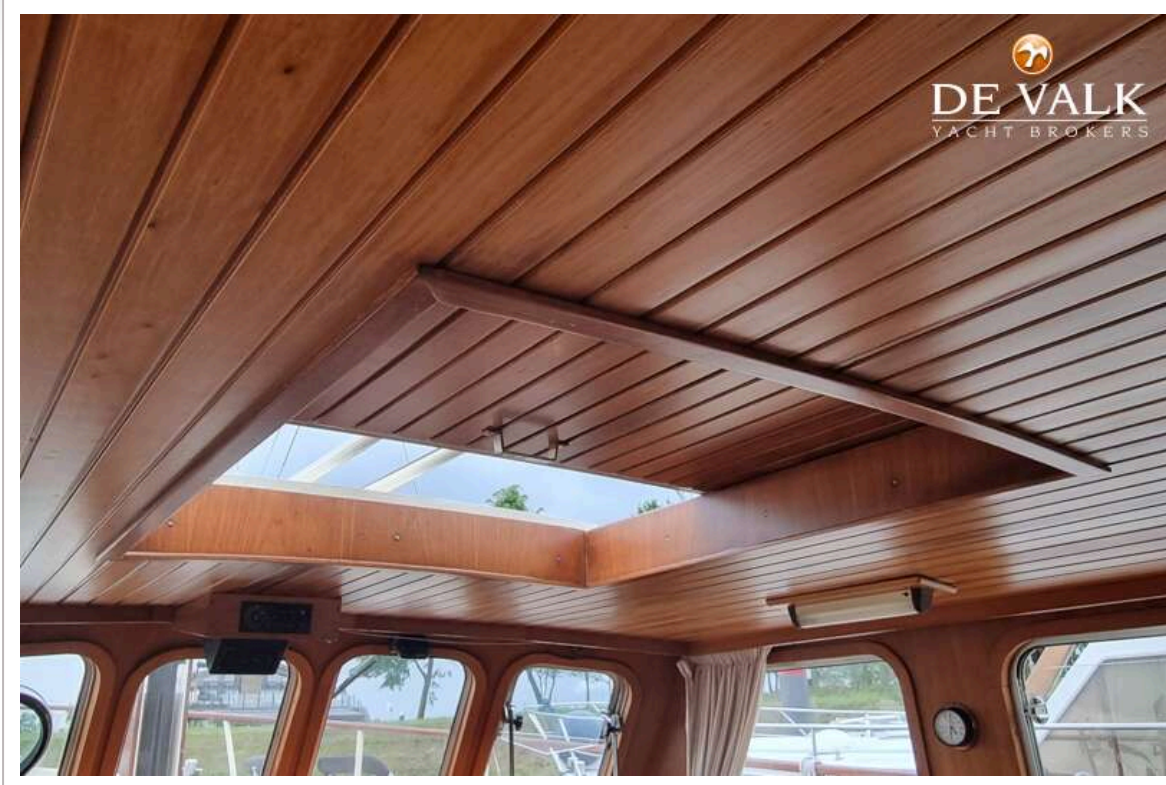
DE RUITER KOTTER 1350 AK



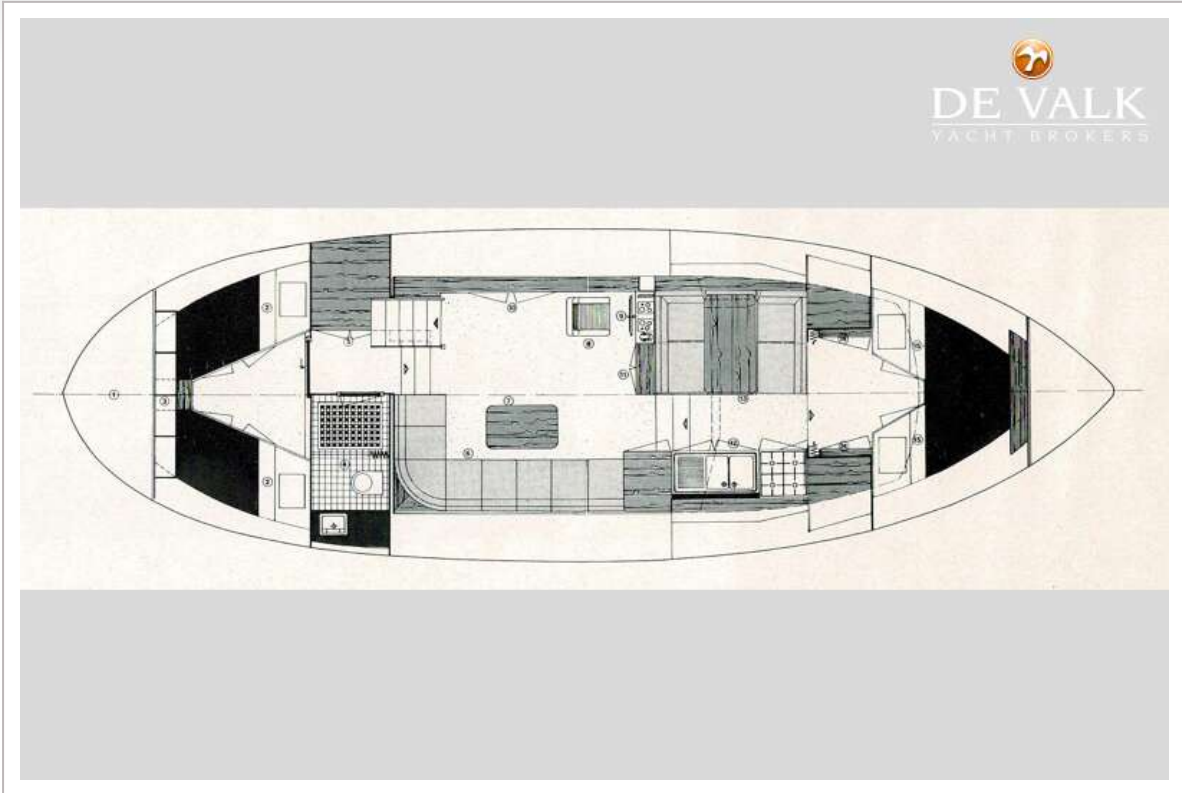
DE RUITER KOTTER 1350 AK



DE RUITER KOTTER 1350 AK



DE RUITER KOTTER 1350 AK



DE RUITER KOTTER 1350 AK



DE RUITER KOTTER 1350 AK

