



AMEL SUPER MARAMU



AMEL SUPER MARAMU

BROKER'S COMMENTS

The Amel Super Maramu 53 is renowned for its craftsmanship and thoughtful design in the world of long distance sailing yachts. With the impressive length of 53 feet and the safe confinement of the center cockpit from which everything is controlled, gives her ability to be sailed even with a small crew. This makes the Super Maramu 53 a favourite among experienced sailors looking for both comfort and outstanding sailing characteristics. this yacht exudes pure class with its distinctive design, harmoniously blending form and function.

Reinoud Bicker Caarten

SPECIFICATIONS

Dimensions	15.98 x 4.60 x 2.13 (m)	Builder	Chantiers Amel
Built	1992	Cabins	2
Material	GRP	Berths	8
Engine(s)	1 x Volvo Penta MD22A diesel	Hp/Kw	80.00 (hp), 58.88 (kw)
Asking price	€ 160.000 (VAT Paid)	Lying	contact Portugal

CONTACT

Sales office	De Valk Portugal	Telephone	+351 308 812321
Address	Edifício Administrativo - Ponta da Areia 8500 - 345 Portimão PT	E-mail	portugal@devalk.nl

DISCLAIMER

These particulars are given in good faith as supplied but cannot be guaranteed.



GENERAL

Model	AMEL SUPER MARAMU
Type	sailing yacht
LOA (m)	15,98
Beam (m)	4,60
Draft (m)	2,13
Air draft (m)	20,00
Headroom (m)	2,00
Year built	1992
Builder	Chantiers Amel
Country	France
Designer	Henri Amel & J. Carteau
Displacement (t)	16
Ballast (tonnes)	lead 5,5
CE norm	A
Hull material	GRP
Hull colour	off-white
Hull shape	round-bilged
Keel type	Fin keel with bulbsection and sidewings
Superstructure material	GRP
Rubbing strake	plastic Painted blue
Deck material	GRP
Deck finish	synthetic teak Painted white
Superstructure deck finish	non-skid moulded in
Cockpit deck finish	synthetic teak
Antifouling (year)	9/2023 Seajet Platinum
Window frame	stainless steel
Window material	tempered glass
Deckhatch	3
Fuel tank (litre)	GRP 550L
Fuel tank 2 (litre)	GRP 300L



Level indicator (fuel tank)	Dipstick, floating
Freshwater tank (litre)	GRP 1000L in keel with Amel gauge
Blackwater tank (litre)	polyethylene 80L
Blackwater tank extraction	deck extraction + uw line
Wheel steering	mechanical
Inside helm position	With autopilot
Emergency tiller	yes

ACCOMMODATION

Cabins	2
Berths	8
Interior	mahogany
Floor	wood
Open cockpit	with fixed windscreens and cockpit tent
Aft deck	yes
Saloon	yes
Headroom saloon (m)	2m
Heating	diesel ducted hot air Wallas Nautic 30D
Heating 2	electric 220V 3 fixed ceramic plates + 1 mobile plate and 2 fixed radiators
Navigation center	yes
Chart table	yes
Aft Cabin	yes
Dinette	yes
Convertible berth	yes
Galley	U shape
Countertop	tiles
Sink	GRP
Cooker	calor gas Force 10 2 burners
Oven	Force10 oven + grill
Microwave	Samsung



AMEL SUPER MARAMU

Microwave/oven combi	Microwave Oven & Grill
Fridge	Danfoss BD50 24V new 2007 Integrated 325L
Freezer	Danfoss 24V new 2007 Integrated 90L
Hot water system	220V + engine CUMULUS 45L boiler new 2003
Water pressure system	yes
Manual and/or foot pump	Fresh water footpump
Dishwasher	Arthur Martin compact 220V
Hot water tap	5x
Ice maker	U line automatic 220V
Crockery	optional
Owners cabin	double bed Aft cabin
Bed length (m)	1,90m
Wardrobe	hanging/drawers/shelves
Bathroom	en suite
Toilet	en suite
Toilet system	electric
Wash basin	in the bathroom
Shower	en suite
Guest cabin 1	twin single Forward
Bed length (m)	1,90m
Wardrobe	hanging and shelves
Bathroom	en suite
Toilet	en suite
Toilet system	electric
Wash basin	in the bathroom
Shower	en suite
Extra info	Extra berth in walkthrough to aft cabin
Washing machine	Kenwood compact Nova

MACHINERY

No of engines	1
---------------	---



AMEL SUPER MARAMU

Make	Volvo Penta
Type	MD22A
HP	80
kW	58.88
Fuel	diesel
Year installed	2006
Year of overhaul	2008, new Garrett turbo
Cruising speed (kn)	6,5
Consumption (l/hr)	5
Range (nm)	1000
Engine hours	700
Engine cooling system	freshwater heat exchanger
Shaft seal	New 2023
Gearbox	Hurth HBW 250-3R
Engine controls	bowden cable
Bowthruster	electric Amel system with anti torque + spare propeller
Exhaust	watercooled
Propeller type	fixed
Propeller blades	3
Propeller shaft material	stainless steel
Shaft lubrication	oilbath
Manual bilge pump	yes
Electric bilge pump	2x24V
Electrical installation	24V/220V
Generator	KOHLER 8KvA
Running hours generator	1180
Start battery	for engine and generator new 2021 2x 12V 105Ah
Service battery	new 2023 4x6V 400Ah
Navigation Battery	1x 12V 105Ah
Battery monitor	Victron BMV 501
Battery charger	1 spare MASTervolt 24V 100A 1x Victron 12V, 1x Victron Skylla 24V



Battery charger/inverter	Mastervolt 220/24/100A Automobile 220/12V (spare)
Solar panel	each with regulator Kyocera, 1x85w 24V and 1x50w 12V
Diode battery combiners	yes
Shorepower	yes
Insulation transformer	Victron 3600W 115/230V in/out
Watermaker	Dessalator 60L/hr
Extra info	Motorola Alternator 25A

NAVIGATION

Compass	Plastimo Olympic 135
Multi control display	B&G Hydra with repeaters
Windset	B&G Hydra
Repeater	yes
VHF	ASN Navicom RT650
VHF handheld	UNIDEN Atlantis 250 (2008)
Autopilot	central unit renewed 2019 Raymarine 7000
Radar	FURUNO GaAS FFE 4 TDD
GPS	1x Garmin II with handset 1x Furuno GP70 in Cockpit, 1x MLR FX312 coupled to PC
Plotter	Standard Horizon 590
Navtex	FURUNO NX300
EPIRB	Ocean Signal 2024
Navigation lights	yes

EQUIPMENT

Fixed windscreen	yes
Cockpit cover	yes
Cockpit cushions	yes
Cockpit table	yes
Bathing platform	yes
Boarding ladder	yes



AMEL SUPER MARAMU

Gangway	Besenzoni hydraulic
Anchor	Spade 14kg Aluminium
Anchor chain	Galvanized 12mm, 125M
Anchor 2	FOB THP 20kg steel
Anchor chain	+ 20mm cable 50M 14mm cable 45M 12mm cable 35M Galvanized 12mm 25M
Chain counter	yes
Other ground tackle	CQR anchor 30kg
Windlass	electrical Lofrans Tigre 1200W/24V + remote
Dinghy	rigid inflatable AB VL8 2010
Outboard	2008 Tohatsu GHP
Outboard support	yes
Sea railing	stainless steel 28mm tube
Grab rail (superstructure)	yes
Pushpit	yes
Pulpit	yes
Life raft	container Bombard 6 rev. 2023
Lifejackets	yes
Danbuoy	yes
Fenders	yes
Mooring lines	yes
Spare parts	yes
Tools	yes
Radio-cd player	yes
Speakers in salon	yes
Clock - barometer	yes
Fire extinguisher	yes
Extinguisher in engine room	yes

RIGGING

Rigging	ketch
---------	-------



AMEL SUPER MARAMU

Standing rigging	wire
Material mast	aluminium coated
Spreaders	yes
Mainsail	2005 in mast furling
Stoway mast	Amel sweat up system
Mizzen	Furling manual, 2005
Mizzen staysail	1992, never used
Genoa	From 2005 on electric furler
Genoa I	Used from 1999
A-symetric spi	From 2001 with sock
Reefing System	AMEL sweat up system
Boomvang	yes
Primary sheet winch	2x Lemar 56ST electric
Secondary sheet winch	11 Lewmar in total of different sizes



AMEL SUPER MARAMU



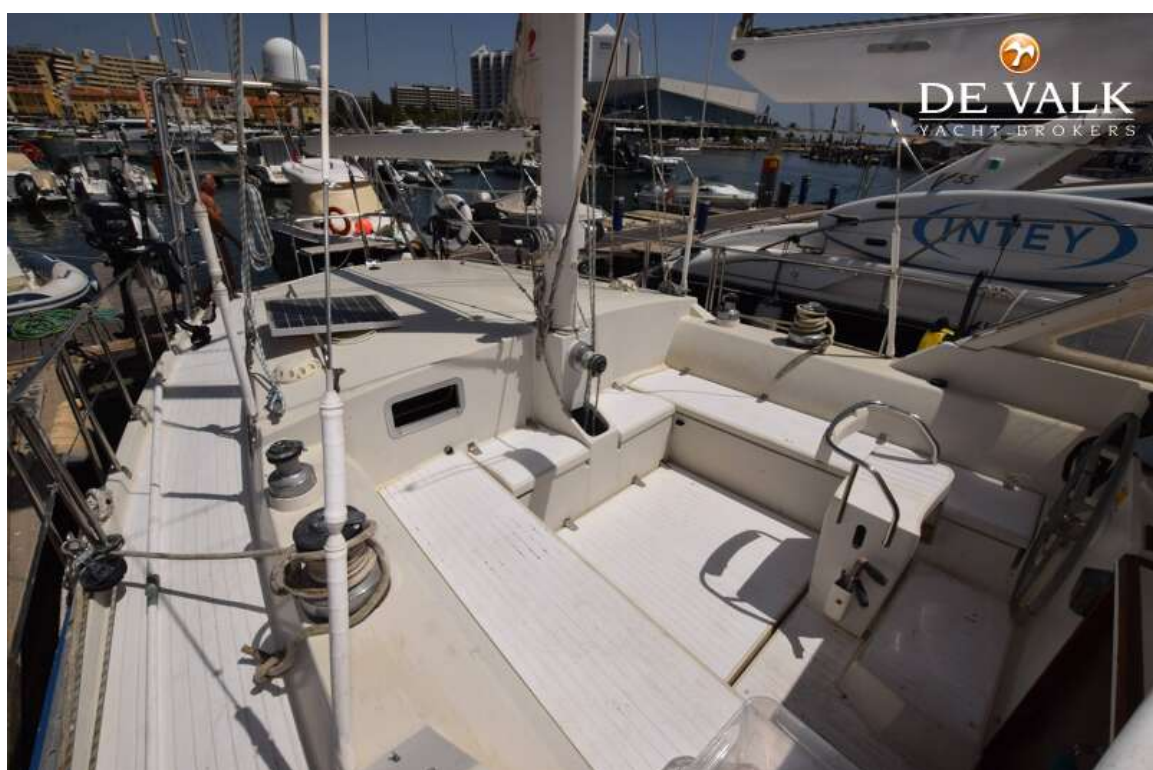
AMEL SUPER MARAMU



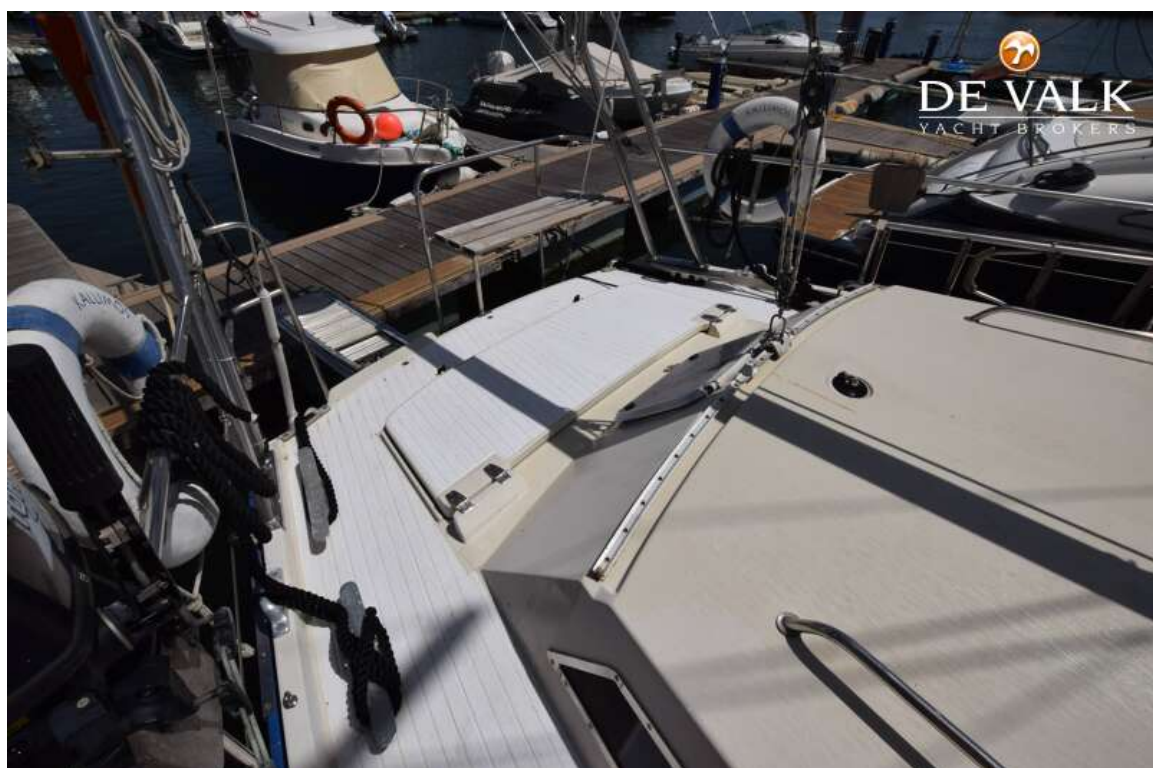
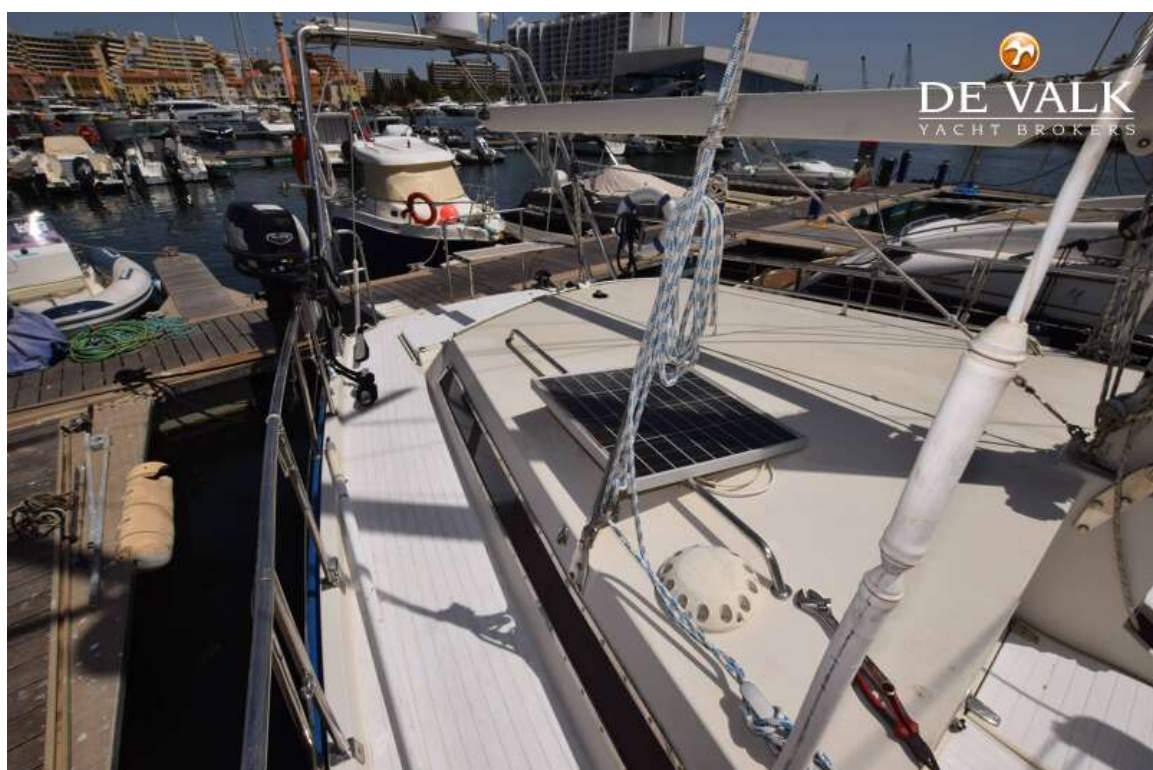
AMEL SUPER MARAMU



AMEL SUPER MARAMU



AMEL SUPER MARAMU



AMEL SUPER MARAMU



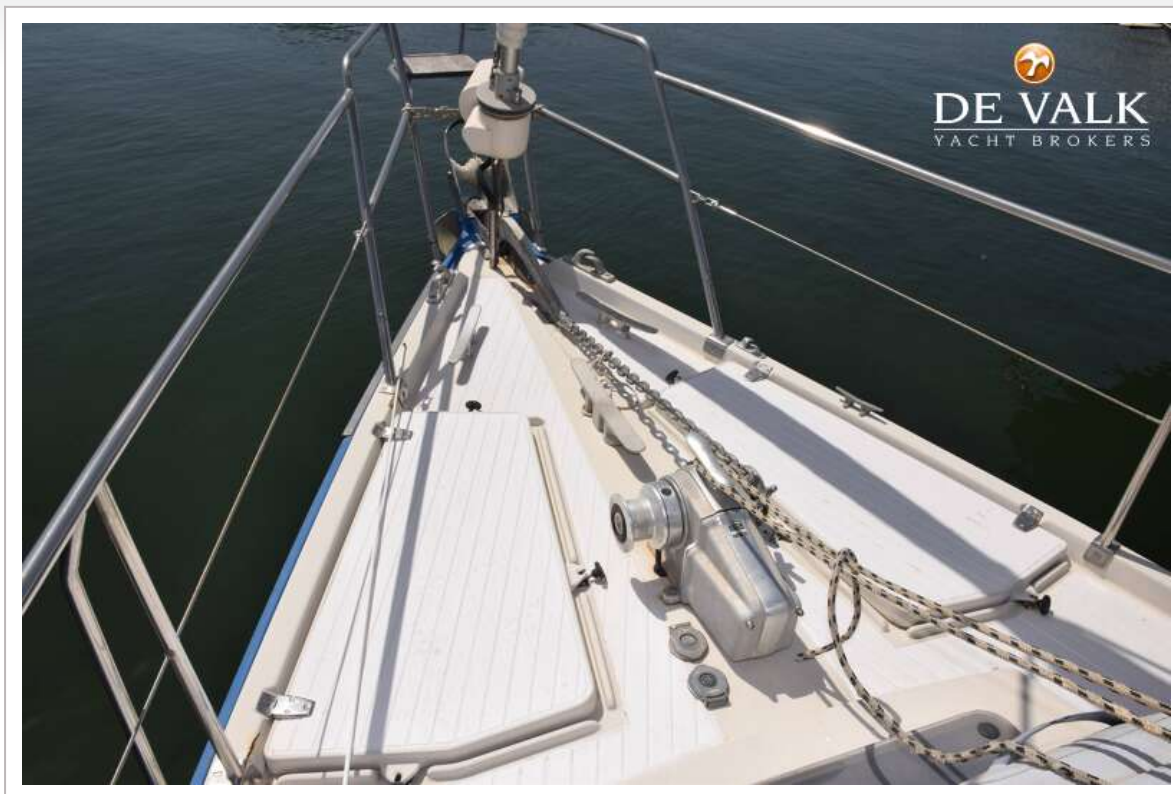
AMEL SUPER MARAMU



AMEL SUPER MARAMU



AMEL SUPER MARAMU



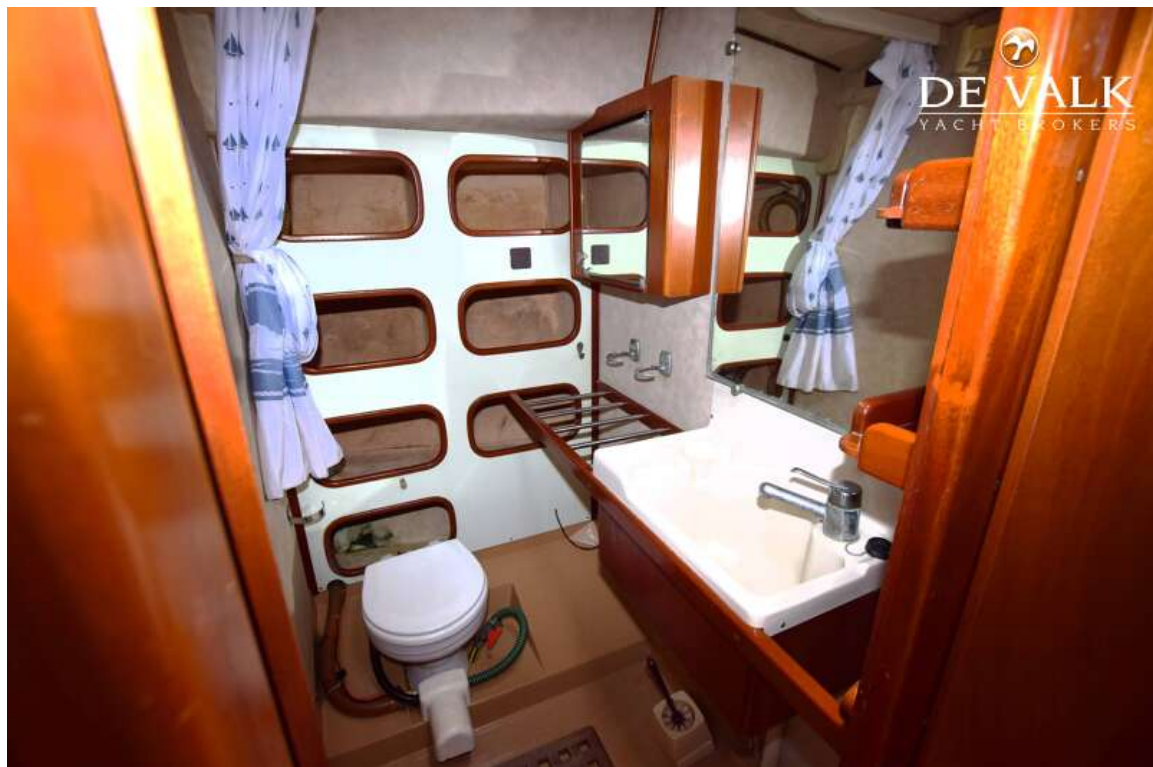
AMEL SUPER MARAMU



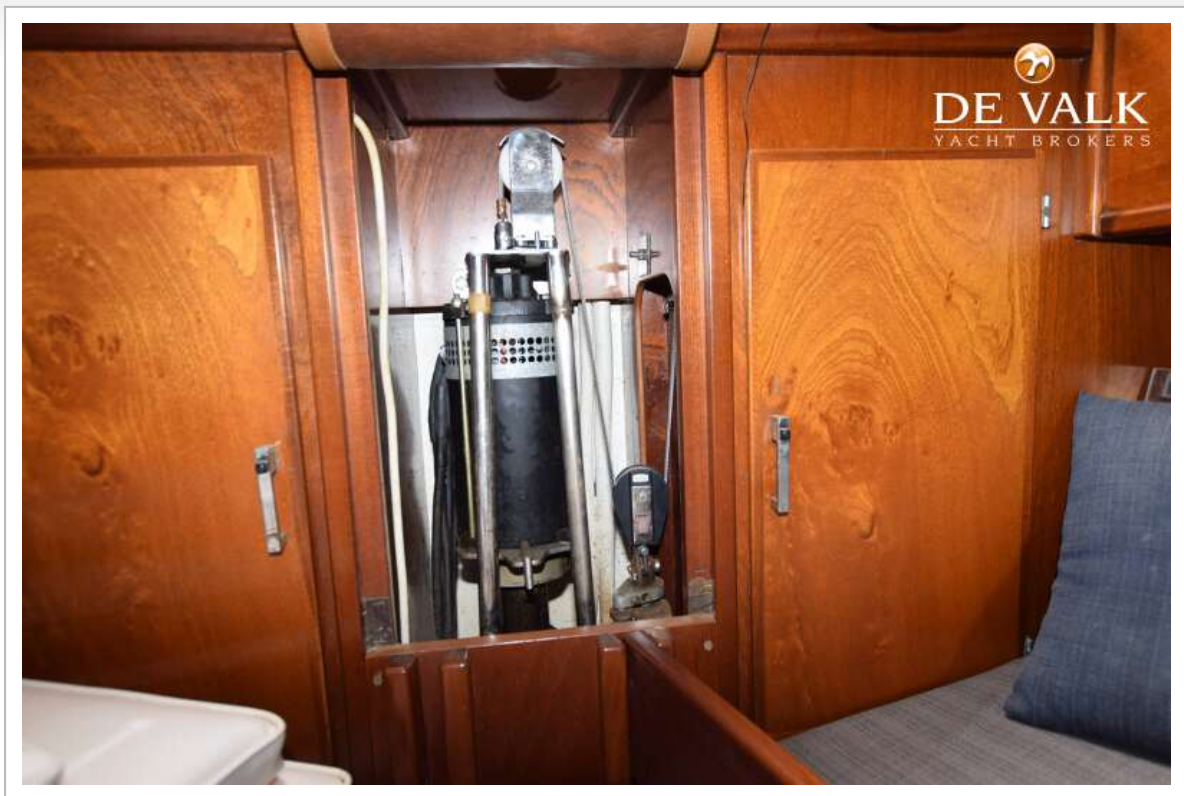
AMEL SUPER MARAMU



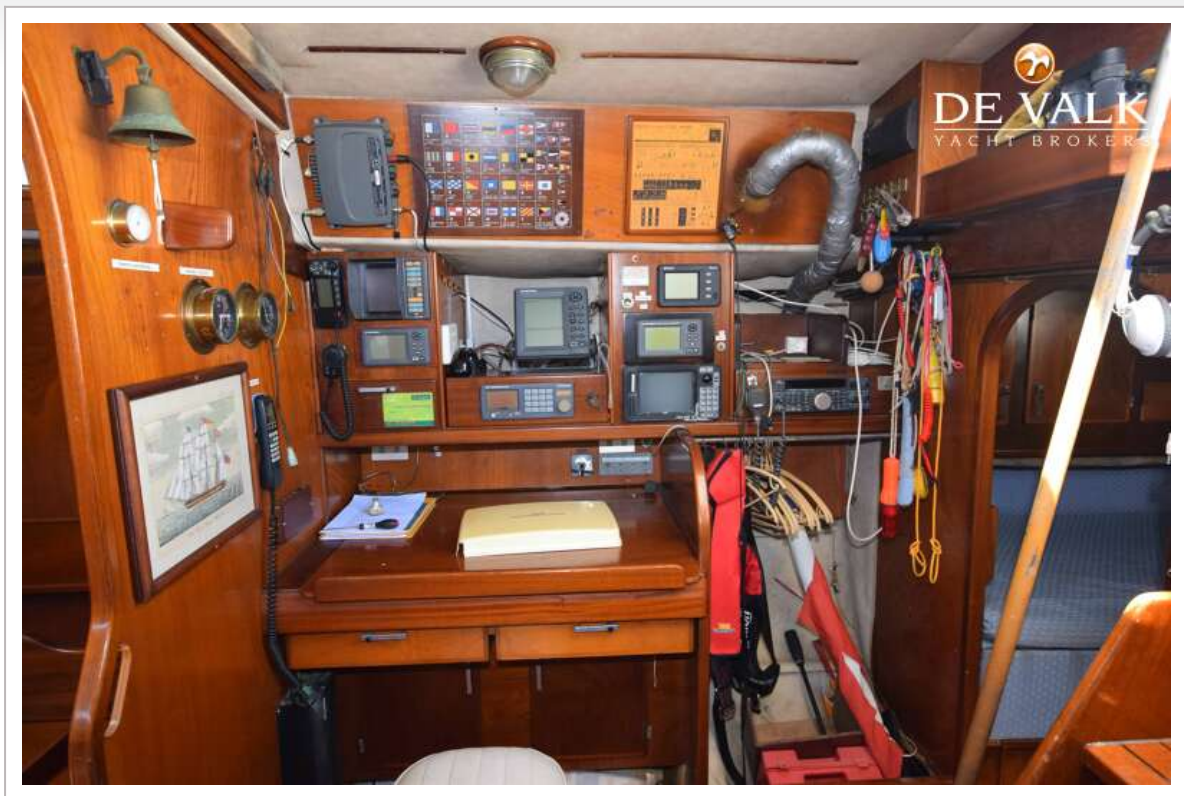
AMEL SUPER MARAMU



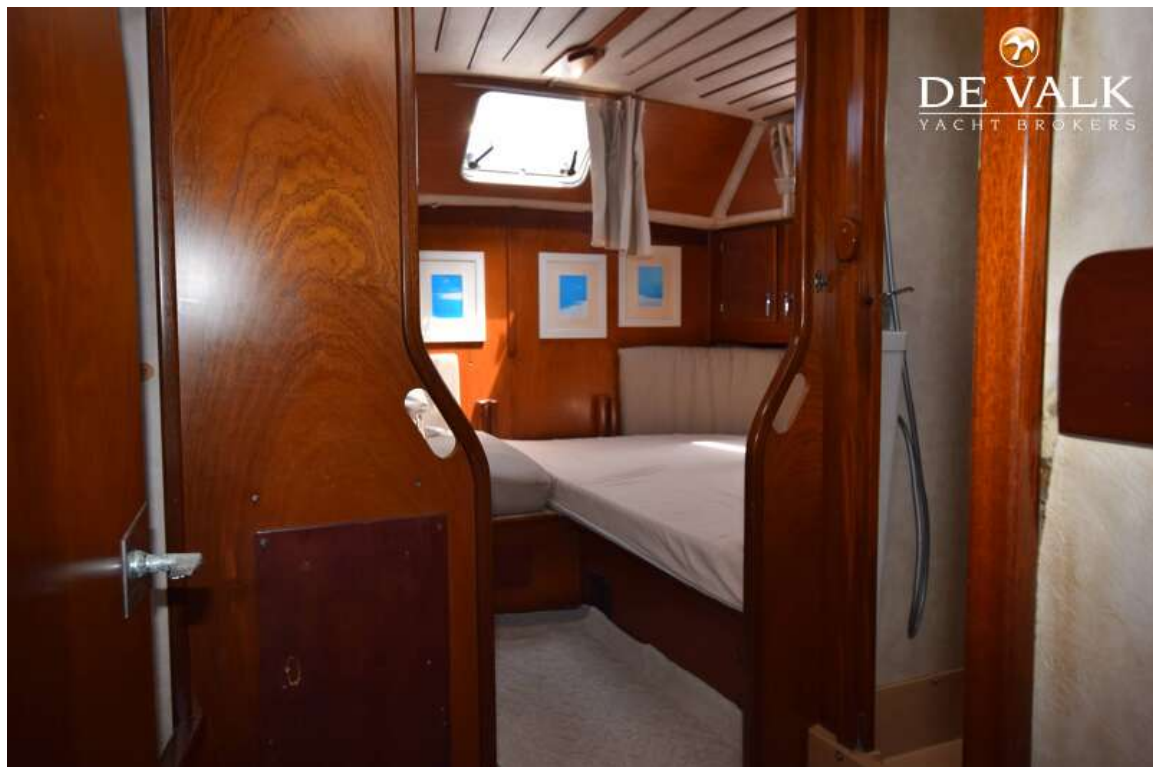
AMEL SUPER MARAMU



AMEL SUPER MARAMU



AMEL SUPER MARAMU



AMEL SUPER MARAMU



AMEL SUPER MARAMU



AMEL SUPER MARAMU

